



# Florida East Coast (FEC) Railway Passenger Rail Service Update

December 2020



COUNTY/ REGION	EXISTING	AGREED TO/ UNDERWAY	UNDER NEGOTIATION/ DISCUSSION
<b>TREASURE COAST</b> (NOT ON MAP)	N/A	<ul style="list-style-type: none"> <li>Phase 2 Brightline Double Tracking and (potentially) Quiet Zones</li> </ul>	<ul style="list-style-type: none"> <li>Treasure Coast Brightline Station</li> </ul>
<b>PALM BEACH</b>	<ul style="list-style-type: none"> <li>West Palm Beach Brightline Station</li> <li>Phase 1 Brightline Double Tracking and Quiet Zones</li> </ul>	<ul style="list-style-type: none"> <li>Phase 2 Brightline Double Tracking and Quiet Zones</li> <li>Northwood Connection</li> <li>Boca Raton Brightline Station</li> </ul>	<ul style="list-style-type: none"> <li>Palm Beach Gardens (PBG) Passenger Rail Station               <ul style="list-style-type: none"> <li>Mobility Plan, Fee, and TOD Ordinance Approved</li> </ul> </li> </ul>
<b>BROWARD</b>	<ul style="list-style-type: none"> <li>Fort Lauderdale Brightline Station</li> <li>Phase 1 Brightline Double Tracking and Quiet Zones</li> </ul>	N/A	<ul style="list-style-type: none"> <li>Pompano Beach Connection</li> <li>MOU between Broward County and FDOT D4 for Project Development &amp; Environmental               <ul style="list-style-type: none"> <li>FLL Airport Passenger Rail Station</li> </ul> </li> </ul>
<b>MIAMI- DADE</b>	<ul style="list-style-type: none"> <li>MiamiCentral Brightline Station</li> <li>Phase 1 Brightline Double Tracking and Quiet Zones</li> </ul>	<ul style="list-style-type: none"> <li>Aventura Brightline Station</li> <li>IRIS/Little River Connection</li> <li>Tri-Rail at MiamiCentral Station</li> </ul>	<ul style="list-style-type: none"> <li>MDC Northeast Corridor Commuter Rail               <ul style="list-style-type: none"> <li>6 Potential Stations between Aventura and Downtown Miami</li> </ul> </li> <li>PortMiami Brightline Station</li> </ul>



# Existing Status

West Palm Beach Brightline Station

Fort Lauderdale Brightline Station

MiamiCentral Brightline Station

# West Palm Beach

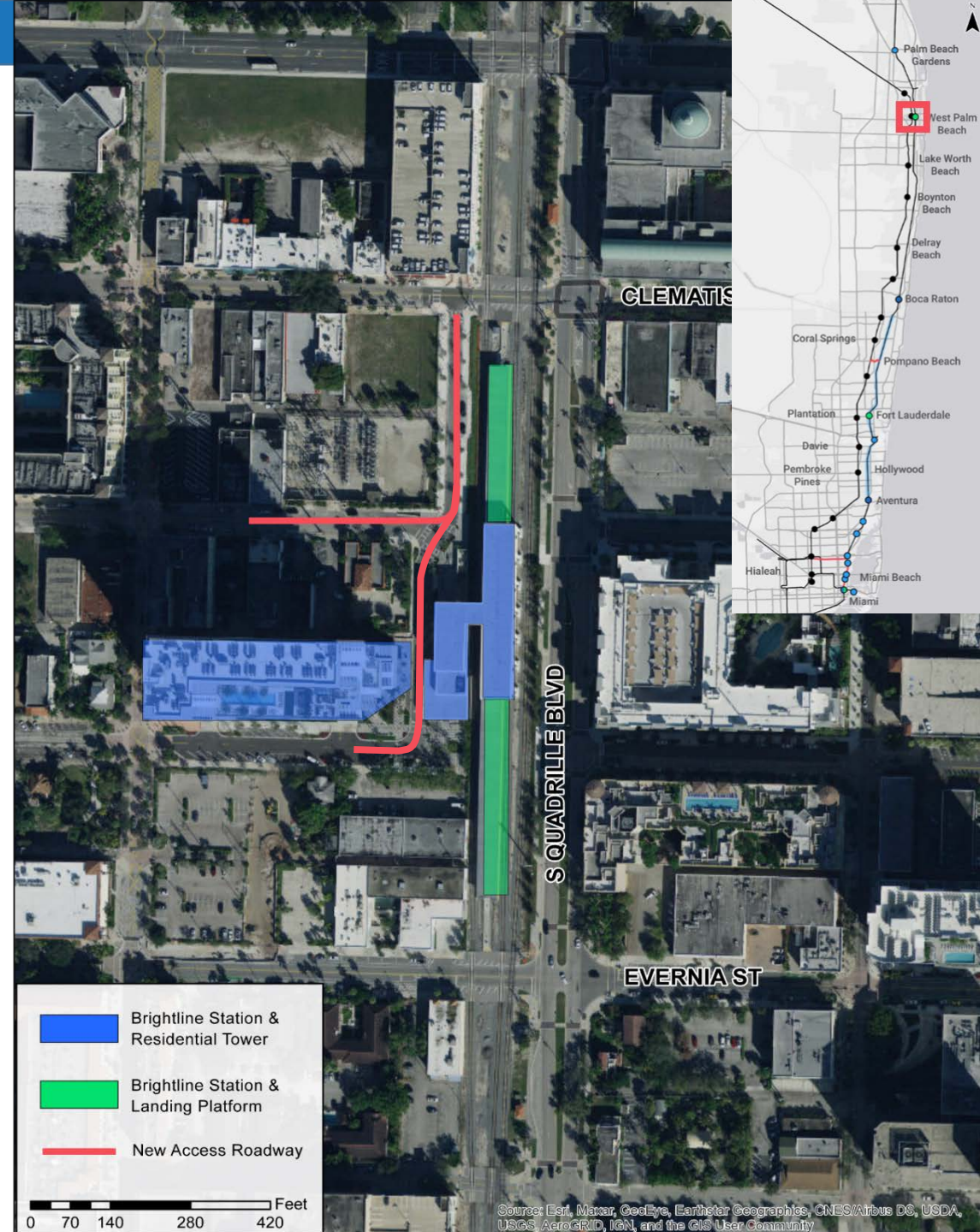


501 Evernia St, West Palm, Beach FL



In-service starting January 13, 2018

- Brightline purchased the land for \$3.8 million
- Brightline received up to \$2.5 million in tax credits, & \$1.3 million in development bonuses
- Brightline built a new station, residential tower, new access road, & other infrastructure improvements





# Fort Lauderdale

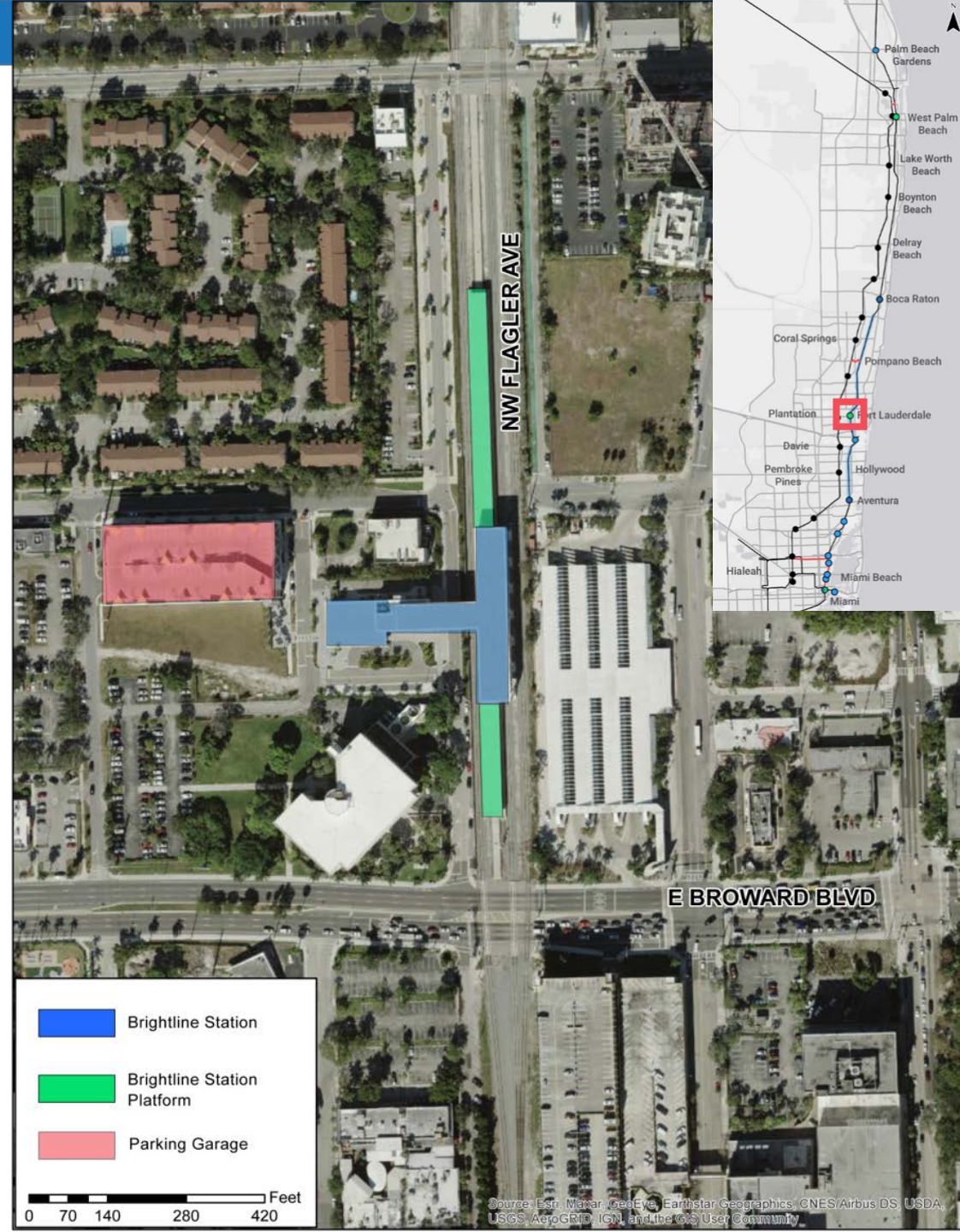


101 NW 2nd Ave, Fort Lauderdale, FL



In-service starting January 13, 2018

- Brightline purchased or owned the land so no agreement exists
- Station covers an area of 60,000 sq.ft
- Includes 218k+ sq.ft park-and-ride facility with a 576-vehicle capacity





# MiamiCentral

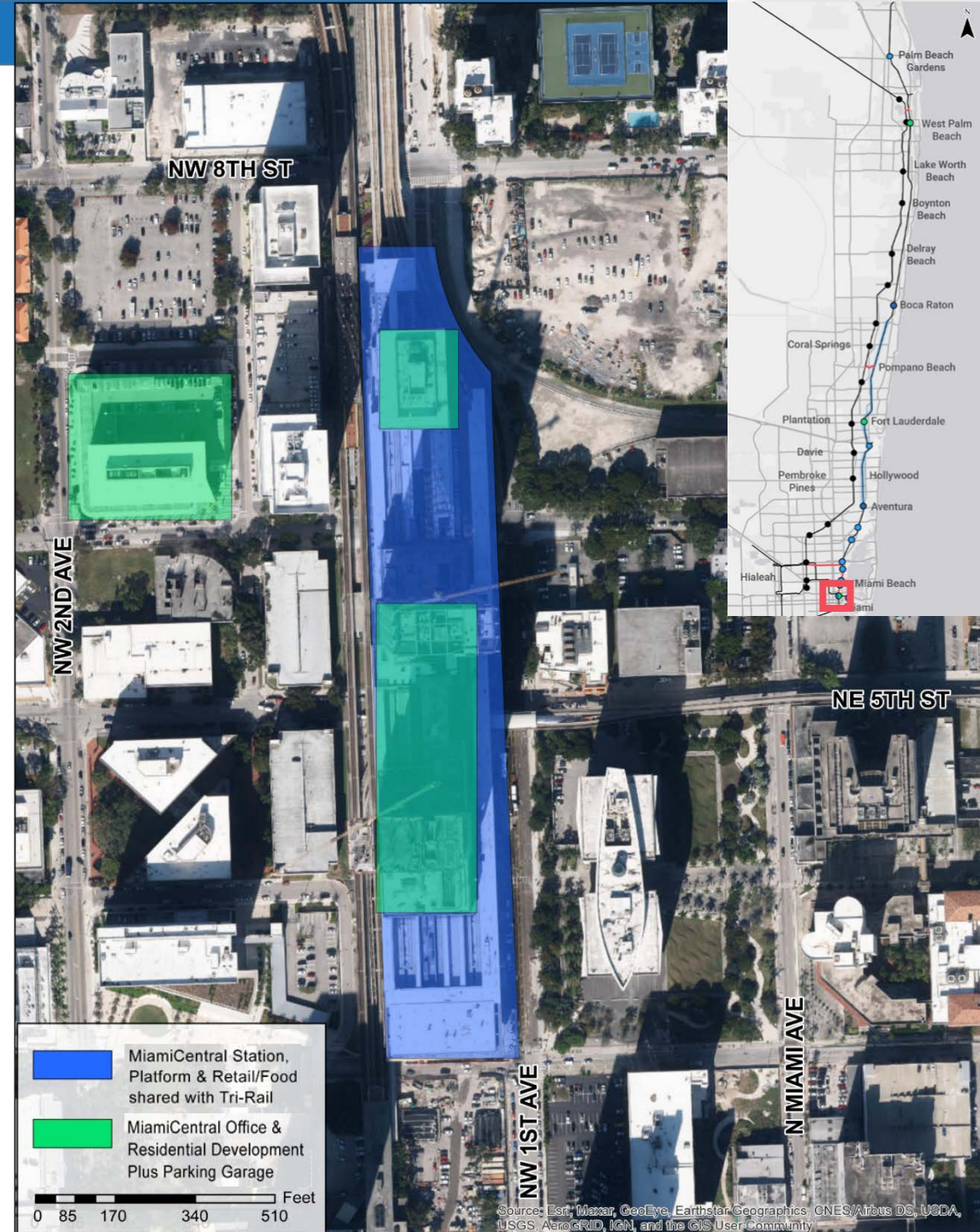


600 NW 1st Ave, Miami, FL



In-service starting May 19, 2018

- Brightline purchased or owned the land so no agreement exists
- 9-acre complex includes 3 million sq.ft of residential, office, commercial, and retail development







# Agreed to/Underway Status

Northwood Connection  
Boca Raton Brightline Station  
Aventura Brightline Station  
IRIS/Little River Connection  
Tri-Rail at MiamiCentral Station



# Northwood

 In the vicinity of 25<sup>th</sup> Street, West Palm Beach, FL

 Constructed and active, but not operational

- Funding partners included FHWA (TIGER Grant), FDOT, SFRTA, FECR and CSXT
- Crossover link between the SFRC and FEC in Palm Beach County
- The crossover will facilitate expansion into Jupiter





# Boca Raton

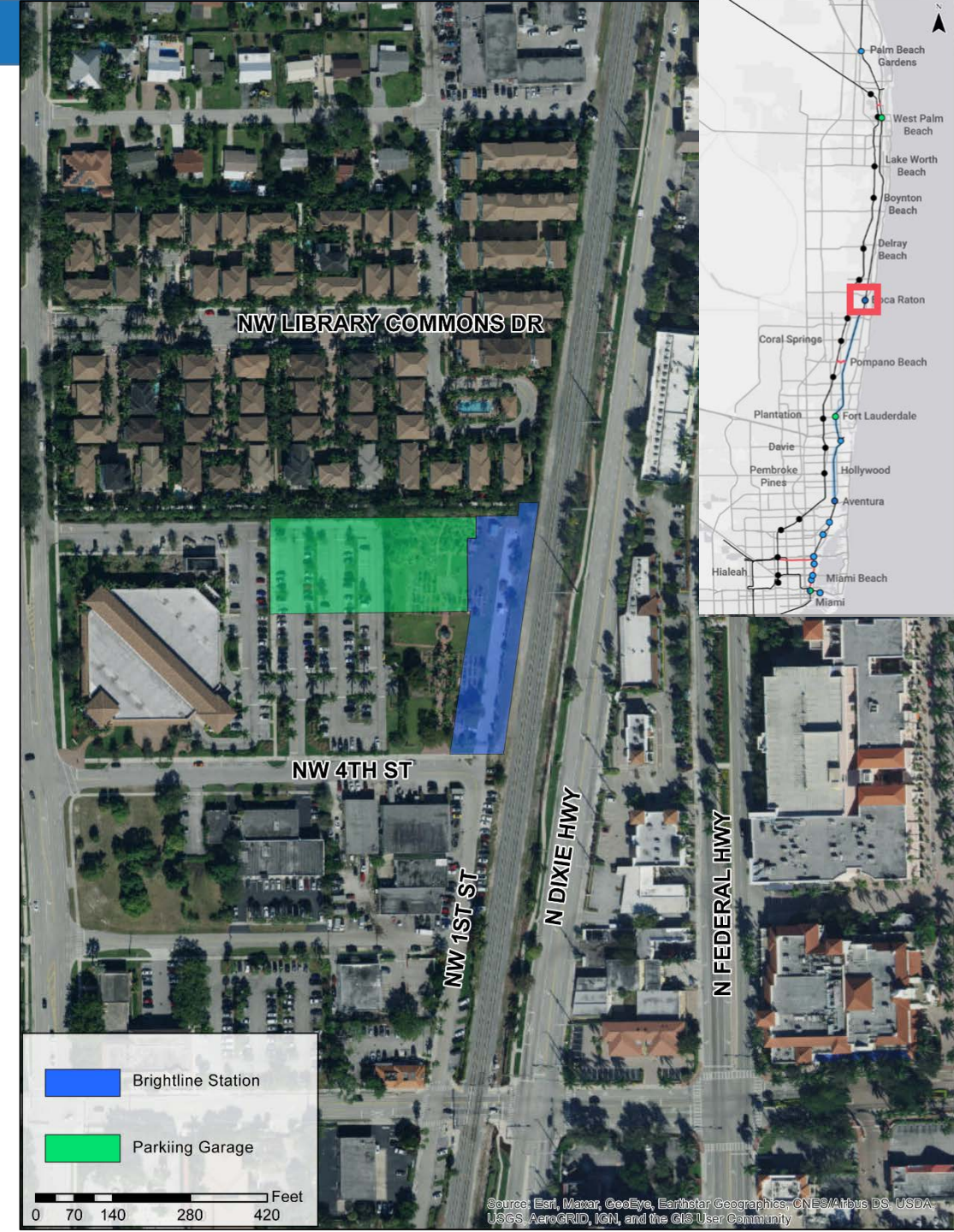


400 NW 2nd Avenue, Boca Raton, FL



Brightline is actively working with the FRA on finalizing the grant agreement documents. The site design is currently in the City's review process and the station is expected to be operational in mid-2022

- \$46 million project
- City of Boca Raton awarded a \$16.35 million FRA CRISI grant for construction of the station & parking garage
- City contributed \$9.9 million
- City provided a lease agreement for land, minimum of \$1 per year
- Agreed upon community garden relocation element





# Aventura

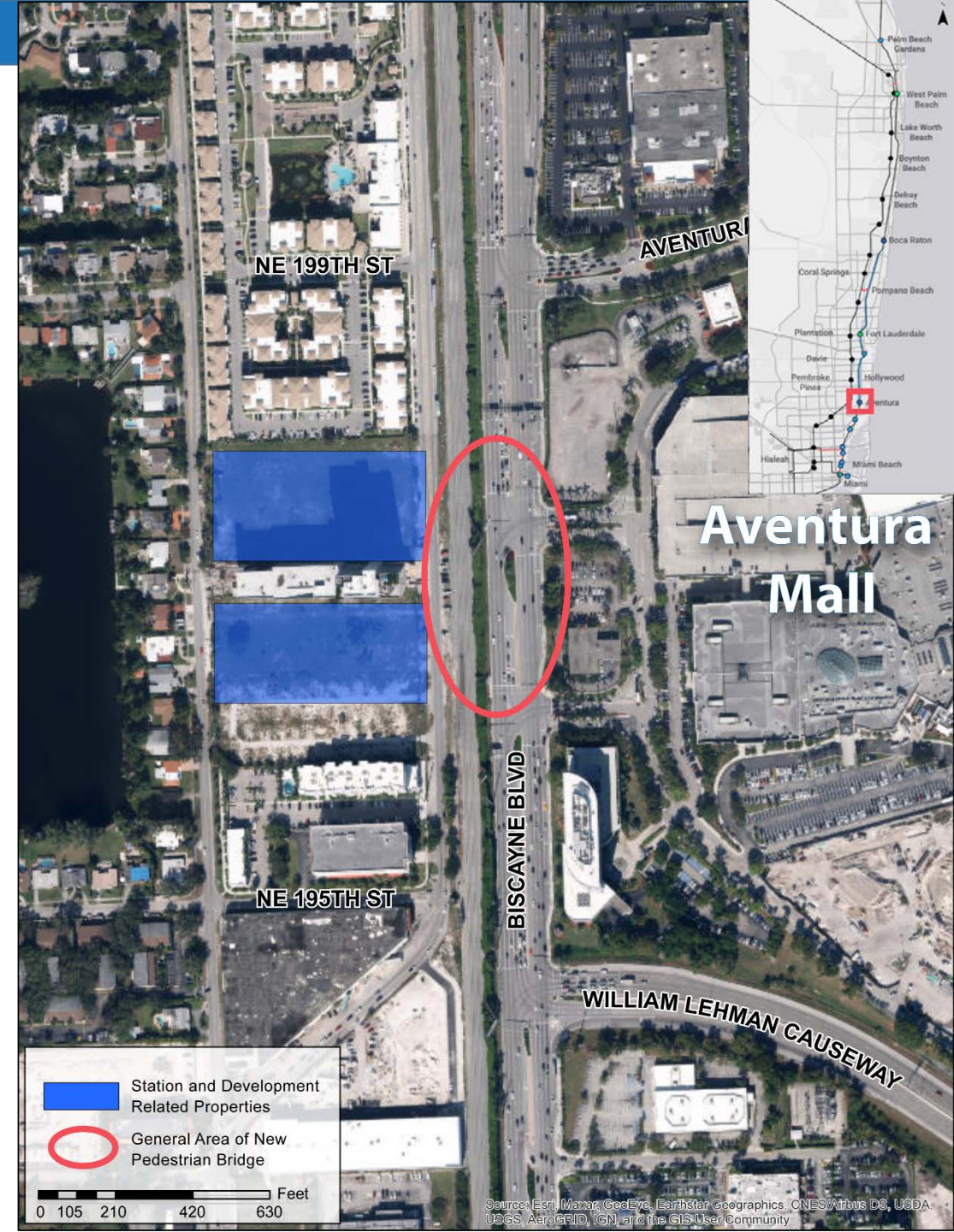


19700 West Dixie Highway and 19825 NE 26th Avenue, Ojus, FL




Expected to be completed by fall of 2021 with flexibility to not launch until late 2022


- \$76.7 million total cost
- Lease Agreement and Bridge Permit Agreement between Brightline and Miami-Dade County
- County authorized 3-acre property acquisition for \$18 million plus closing costs
- Miami-Dade County agreed to fund up to \$57.4 million for construction of rail & station infrastructure using local surtax funding
- On-going discussions with FDOT for pedestrian bridge permitting



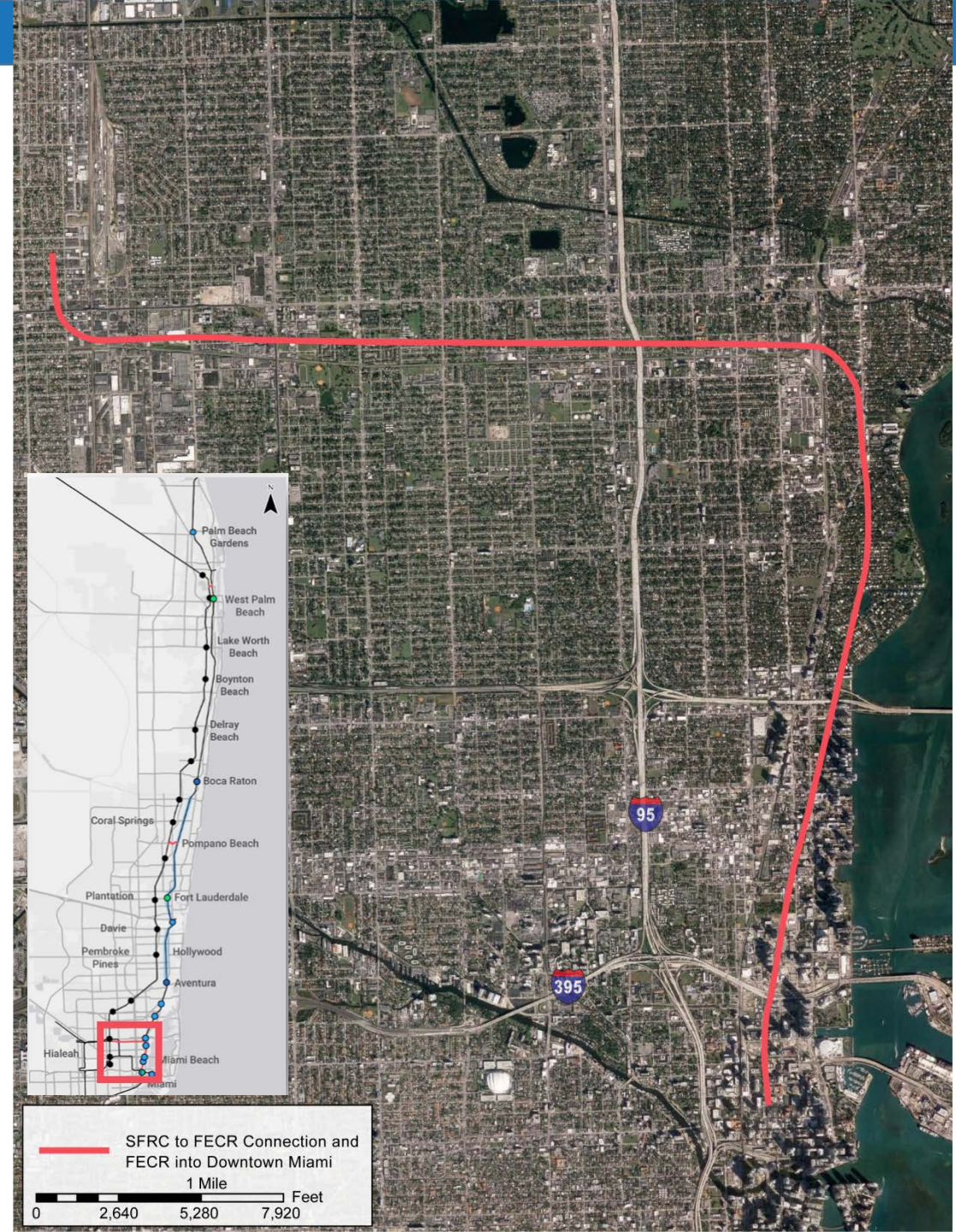


# IRIS/Little River

 East/West Segment and North/South Segment, Miami, FL

 Constructed and active, but not operational

- Provides rail connection between the SFRC and FECR corridors in Miami-Dade County
- Brightline still needs to implement federally mandated Positive Train Control and obtain FRA approval





# Tri-Rail at MiamiCentral

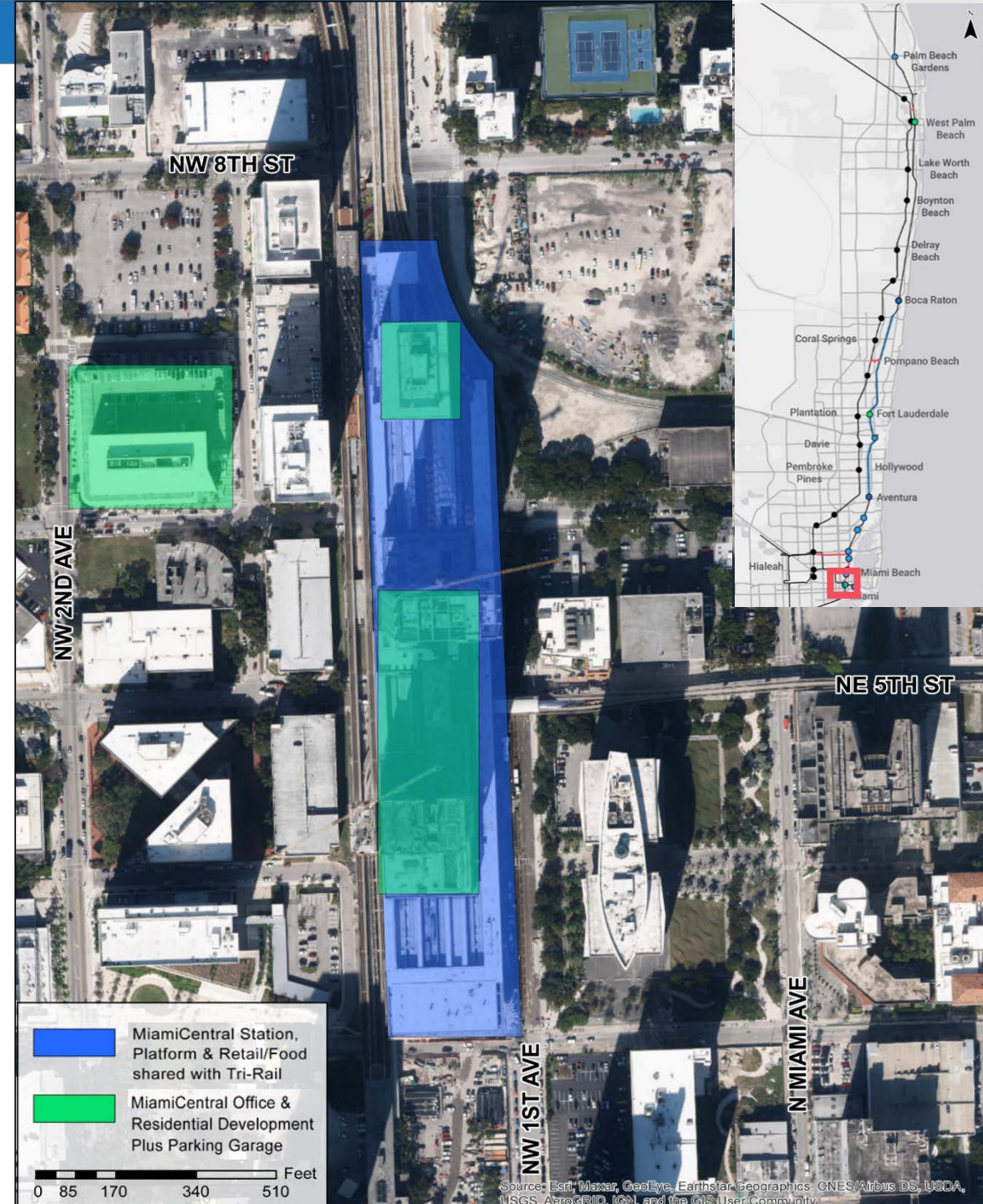


600 NW 1st Ave, Miami, FL



On-hold. Waiting on positive train control (PTC) approval from the Federal Rail Administration (FRA)

- SFRTA, Miami-Dade County, the Miami DDA, and local CRAs invested approximately \$70.44 million
- \$2.1-\$2.3 million (per year) for Operations & Maintenance
- Access, Operating and Funding Agreement signed between FECR, Brightline, and SFRTA
- Tri-Rail Track Improvements Agreement signed between Brightline & SFRTA





# Under Negotiation/ Discussion

Treasure Coast Brightline Station

Palm Beach Gardens Passenger Rail Station

Pompano Beach Connection

MOU between Broward County and FDOT D4 for PD&E

MDC Northeast Corridor Commuter Rail Stations

PortMiami Brightline Station

# Treasure Coast

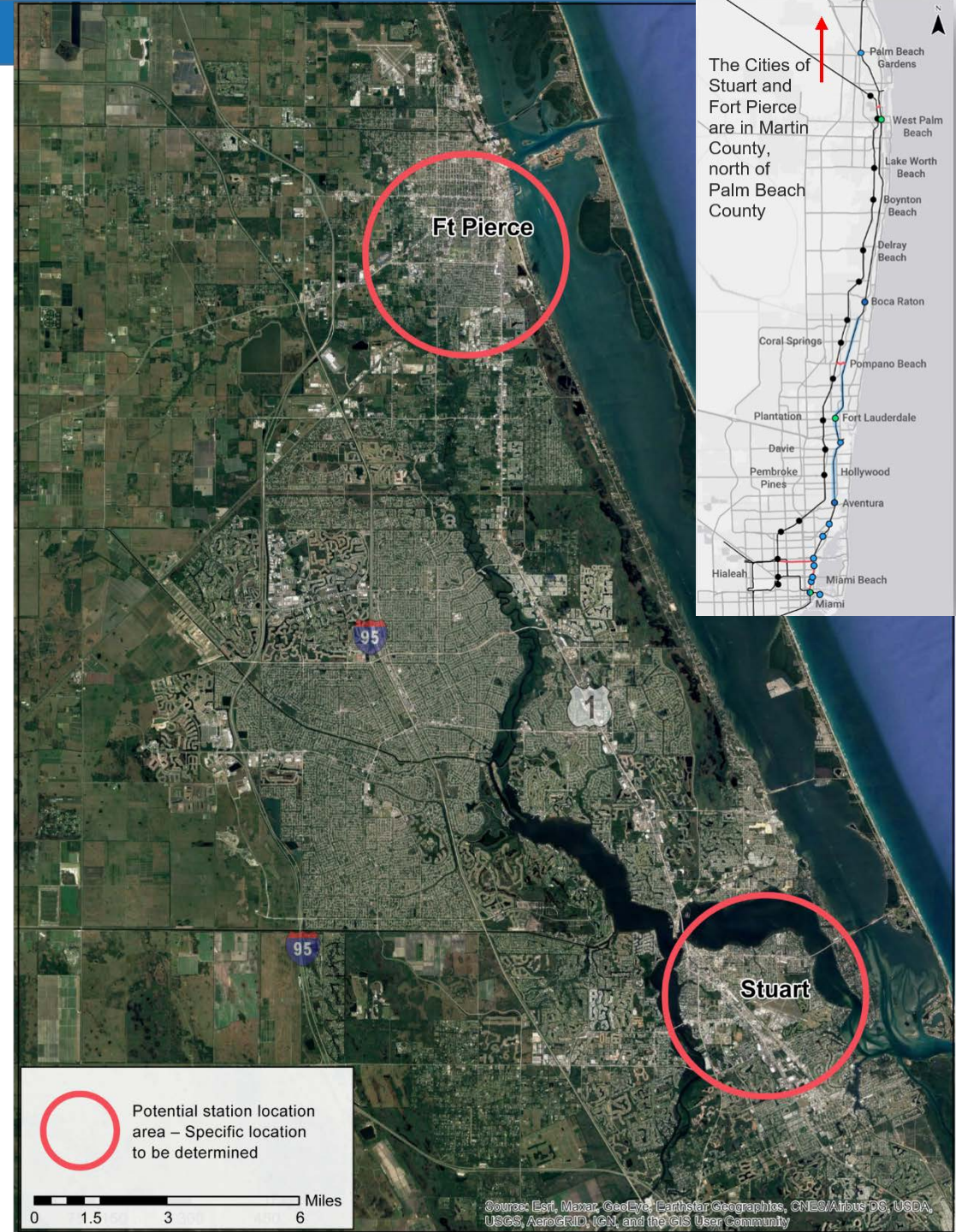


To be determined, but Stuart, FL noted as likely location



Finalized legal settlement and potential for future station in Martin County

- Brightline asked cities in the area to submit proposals for station locations
- Fort Pierce and Stuart expressed interest
- Martin County lawsuit terms included splitting the cost of building at least one train station including safety upgrades along the railroad tracks





# Palm Beach Gardens

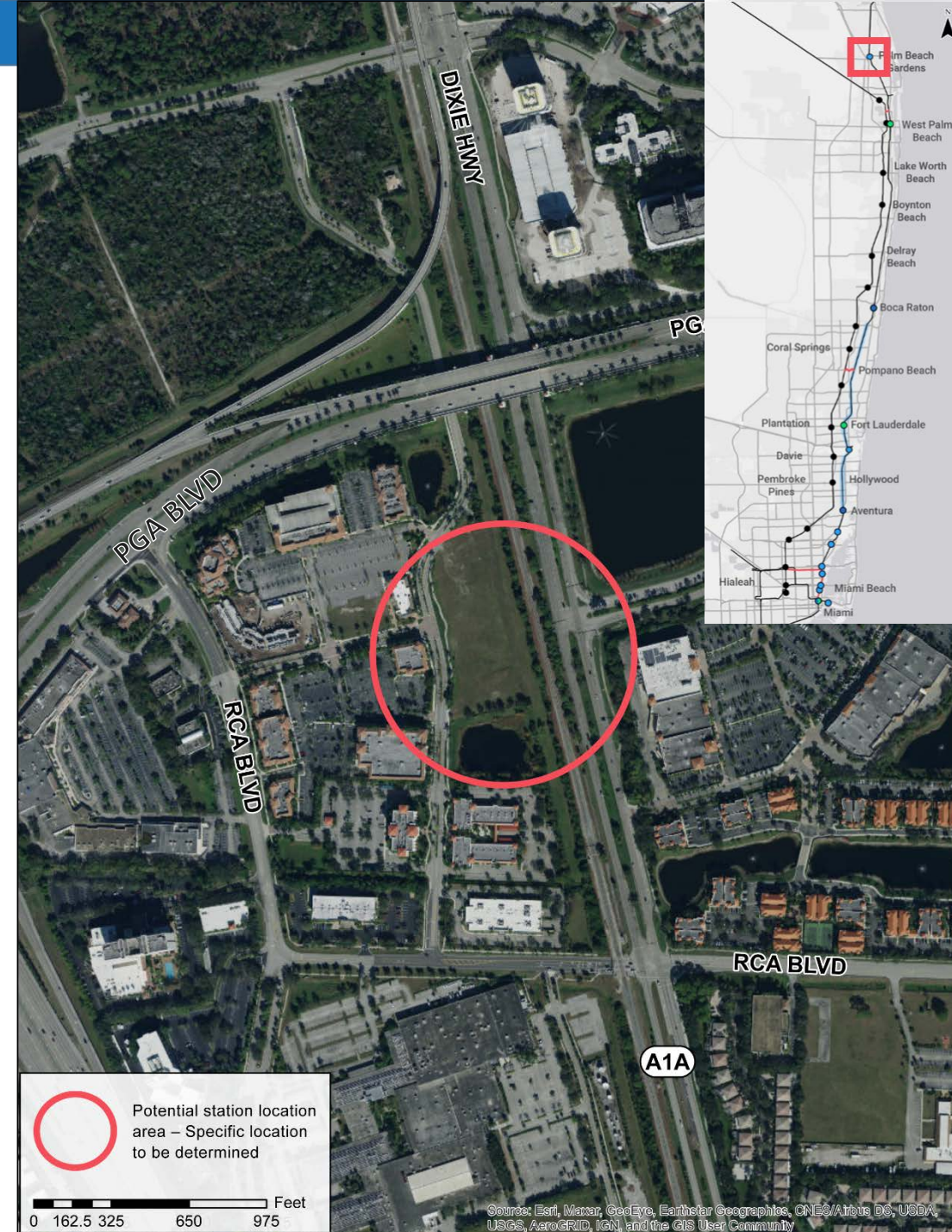


Proposed for just south of PGA Boulevard, Palm Beach Gardens, FL



Mobility Plan, Fee, and TOD Ordinance adopted

- TPA's LRTP includes a passenger rail station on the FECR in Palm Beach Gardens
- Palm Beach Gardens has adopted a mobility plan and fee that includes a passenger rail station on the FECR
- Palm Beach Gardens staff have approached Brightline about the possibility of a Brightline station





# Pompano Beach

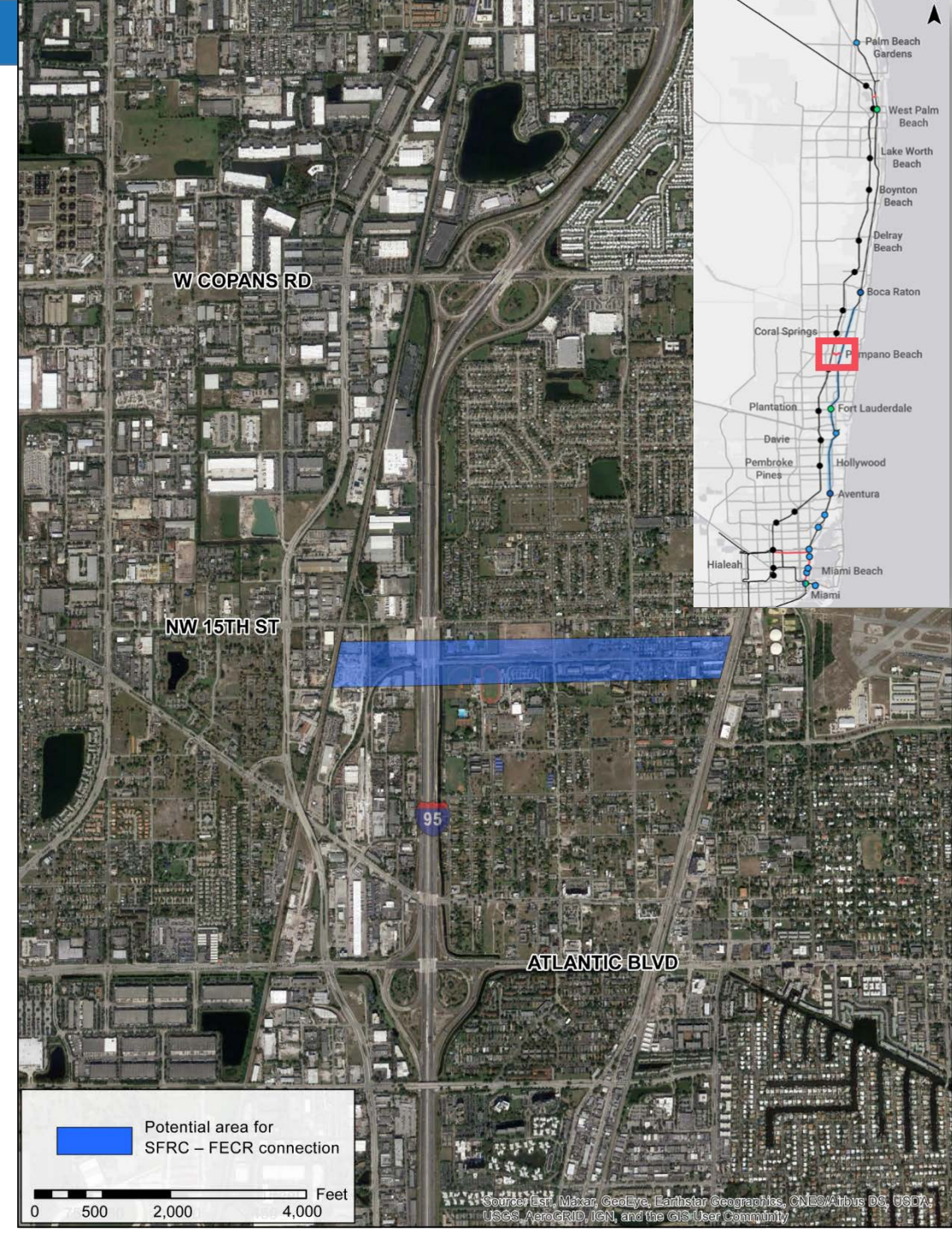


To be determined, but initial location was between Atlantic Boulevard and Copans Road



No active studies


- Provides rail connection between SFRC and FEC corridors allowing crossover service in Broward County
- \$77.7 million anticipated connection cost
- Slated for 2026-2030 per Broward MPO MTP/LRTP
- Coordination occurred in 2019 between the Broward MPO, FDOT, and one property owner who was not interested



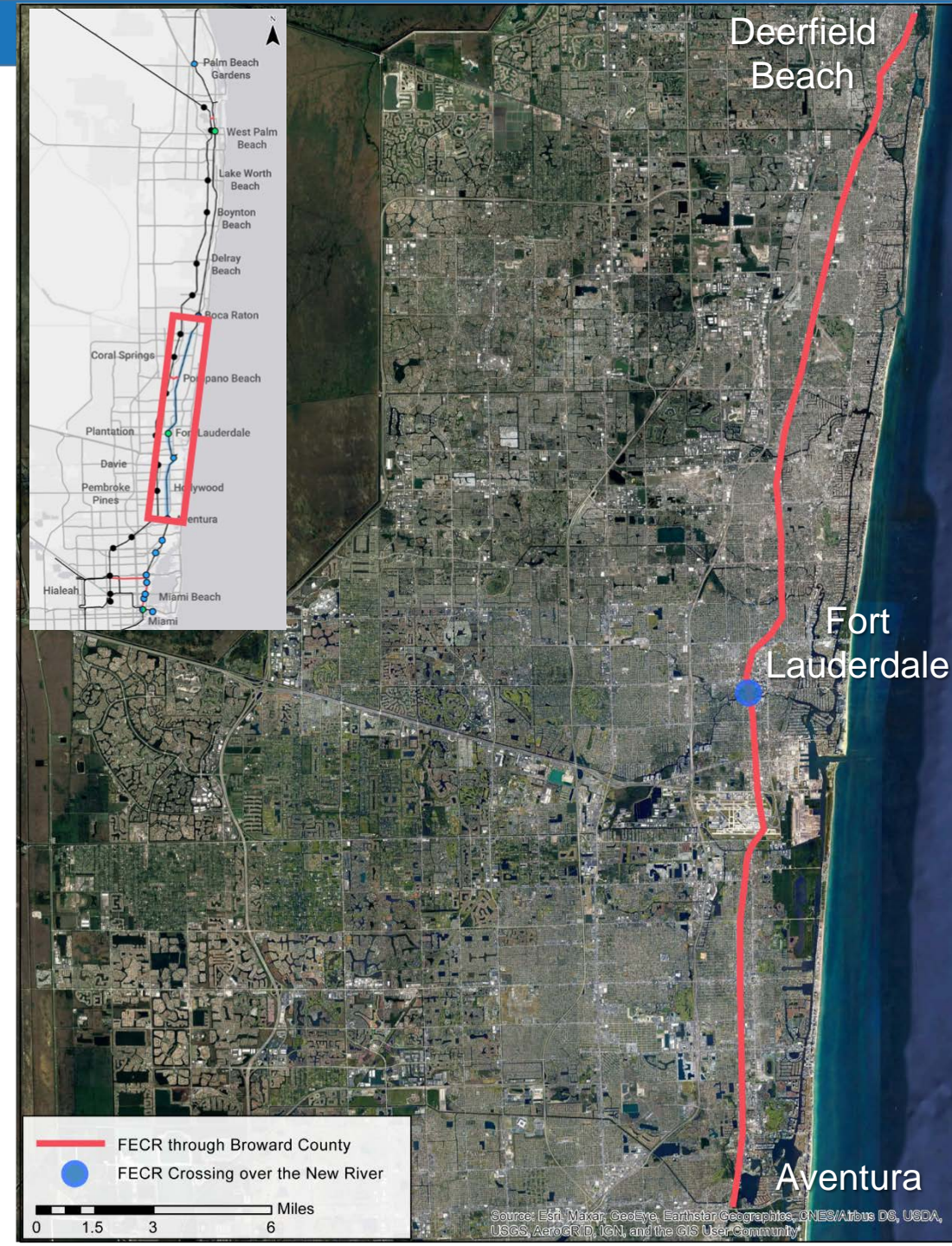


# Broward County

 To be determined, but link is currently proposed from Aventura to Deerfield Beach, FL

 Memorandum of Understanding (MOU) in-process between Broward County and FDOT

- MOU in-process between the County and FDOT to continue the PD&E study
- New River crossing is significant obstacle due to competing stakeholder visions (bridge or tunnel)
  - Stakeholder consensus, feasible alternatives, and funding are needed to see this move forward
- FLL Station discussions have occurred





# Northeast Corridor

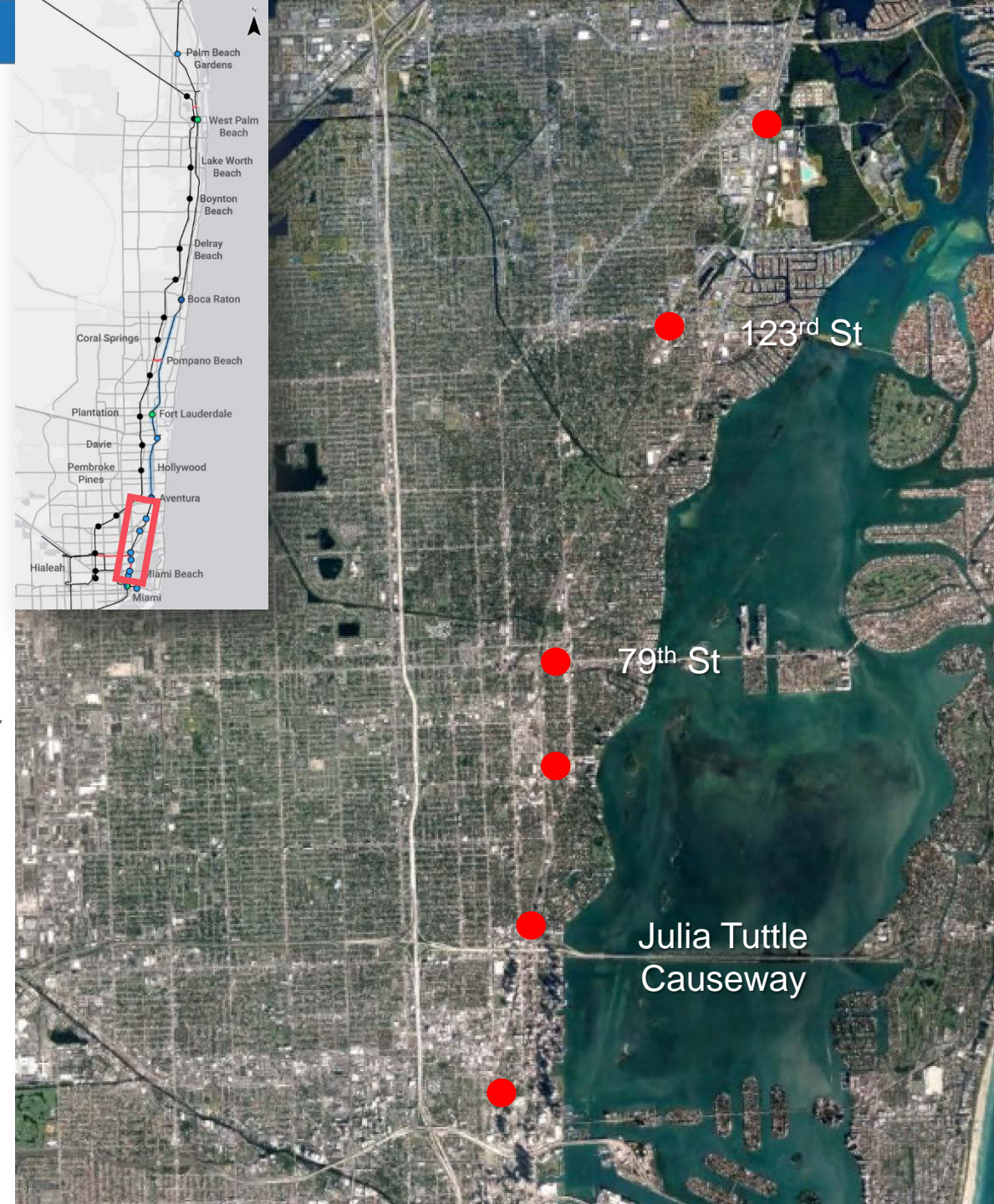


FIU Biscayne Bay Campus in North Miami, FL to Wynwood/Edgewater in Miami, FL to



MDC resolution directed staff to negotiate access with Brightline. Operator to be determined.

- 6 potential stations being considered:
  - FIU Biscayne Bay campus, North Miami, and Miami neighborhoods including El Portal, Little Haiti the Design District, and Wynwood/Edgewater
- Nov. 20, 2020 MDC Reso directed staff to negotiate with Brightline for access
  - Set upper limits of \$50 million initial payment and \$12 million annual fee





# PortMiami

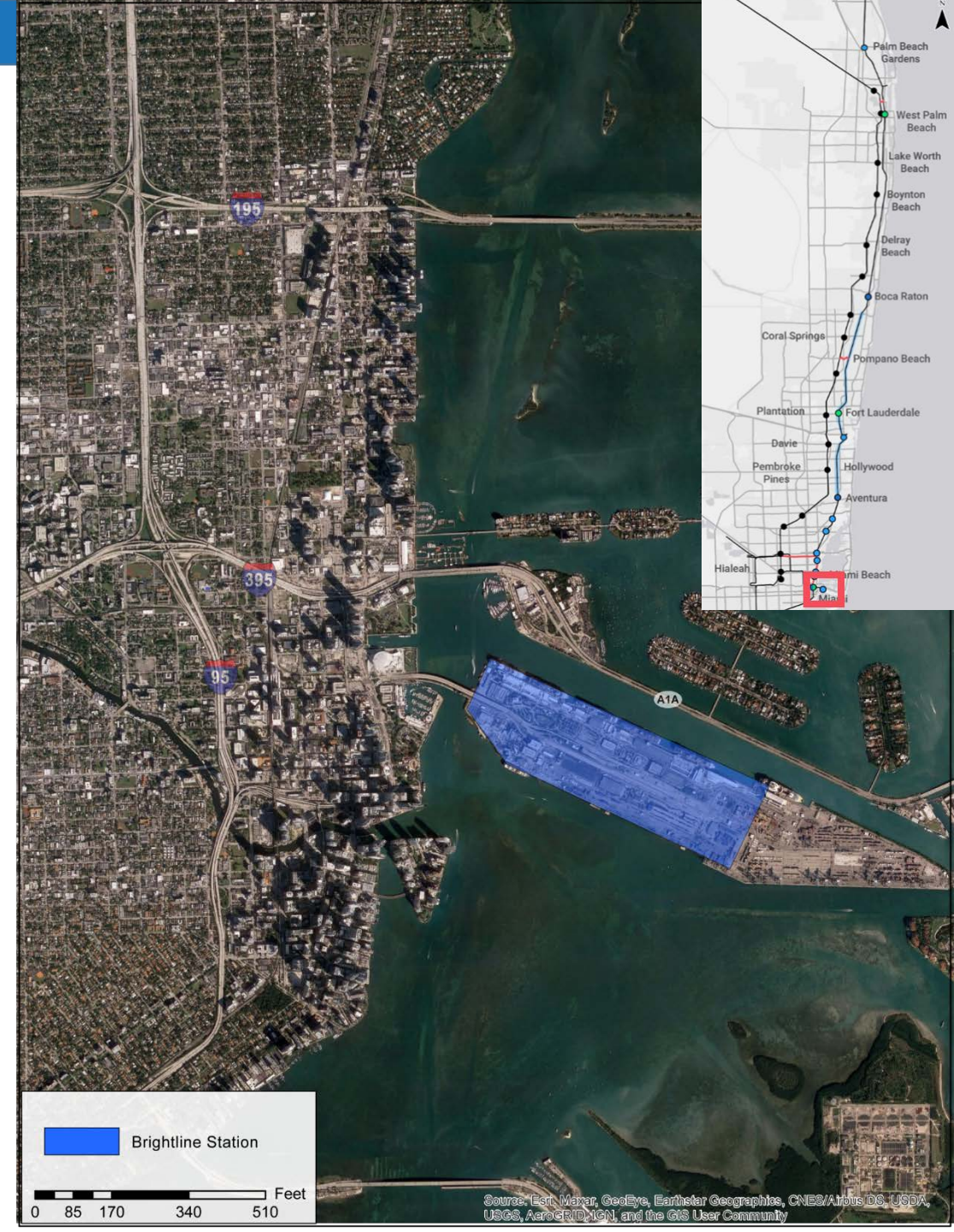


1015 North America Way, Miami, FL – specific location to be determined



Under negotiations. Timeline to be determined.

- Construction cost is estimated at \$15.2 million
- Miami-Dade County earmarked a one-time contribution of \$5.2 million
- Brightline may cover \$10 million, along with maintenance, and contribute \$35 million in rolling stock
- The County expects to recoup \$49 million over a 30-year period through a \$2 passenger fee





Questions or Additional  
Information Desired?