

Hallandale Beach Transportation Master Plan

Stakeholder Meeting: Broward County
Project Introduction

Agenda

1. Hallandale Beach TMP: Basic Information

- TMP Schedule
 - Current Status

2. About Hallandale Beach

- City Map
- Demographics
- 5-Year Injury Crash Trends
- TMP Vision

3. Discussion

- **Planned Improvements and Studies**
- **Status Request**

4. Next Steps

Want more information?

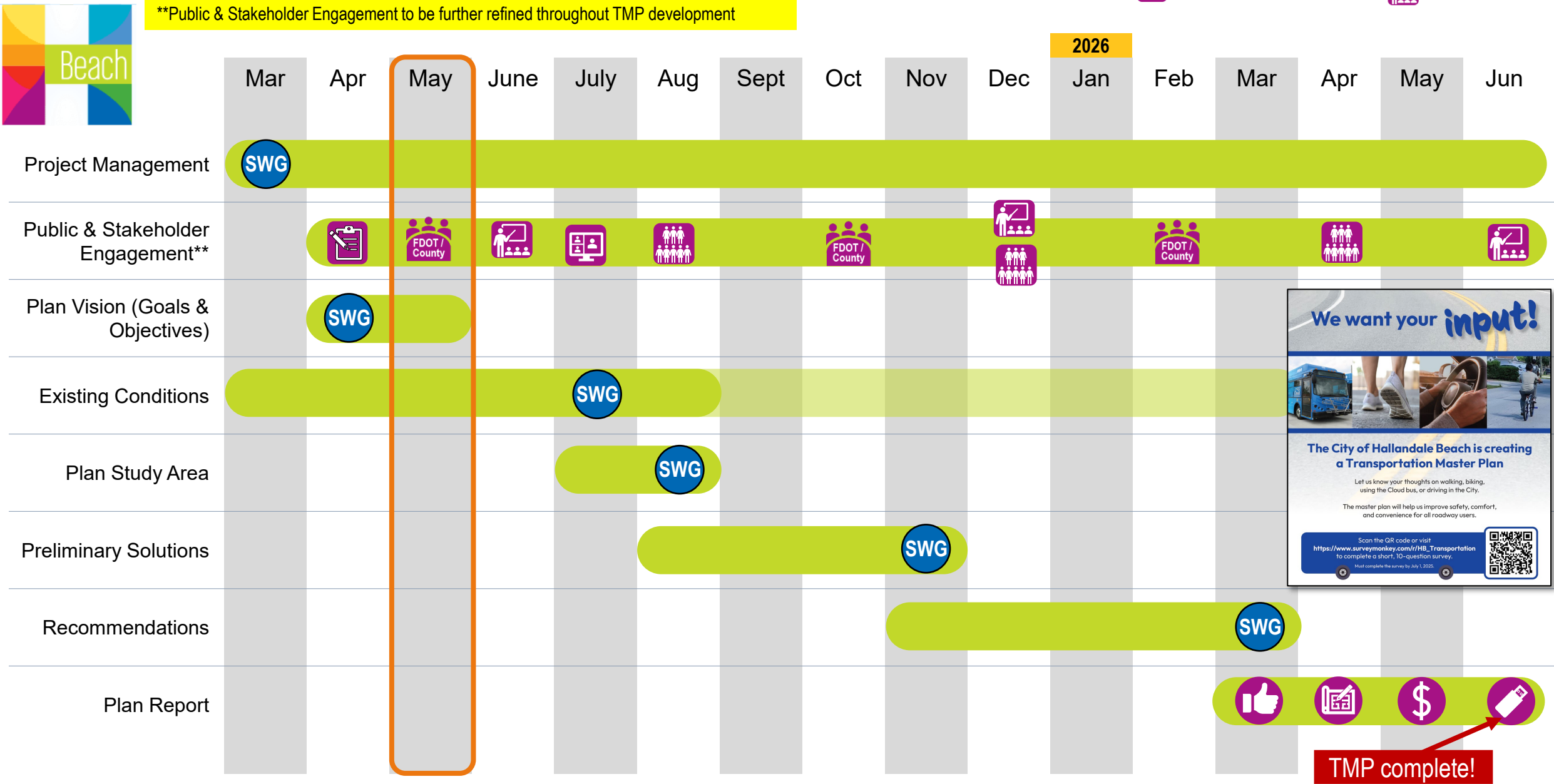
<https://www.browardmpo.org/plans/city-of-hallandale-beach>

BMPO Technical Assistance for TMP:

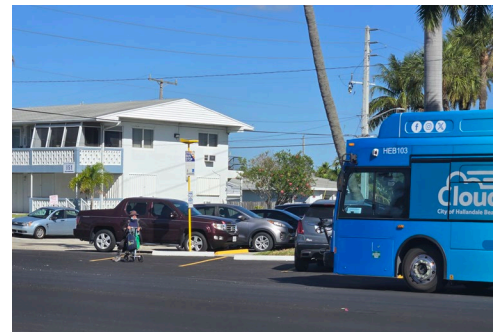
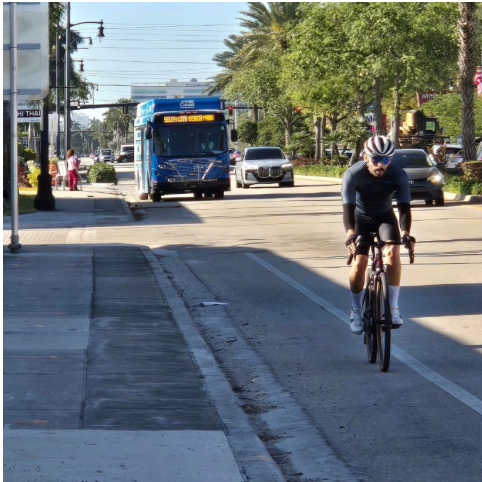
Identify community-driven, design-ready *multimodal* transportation projects for up to **six roadways** that are based on best practices.



Hallandale Beach TMP: Schedule

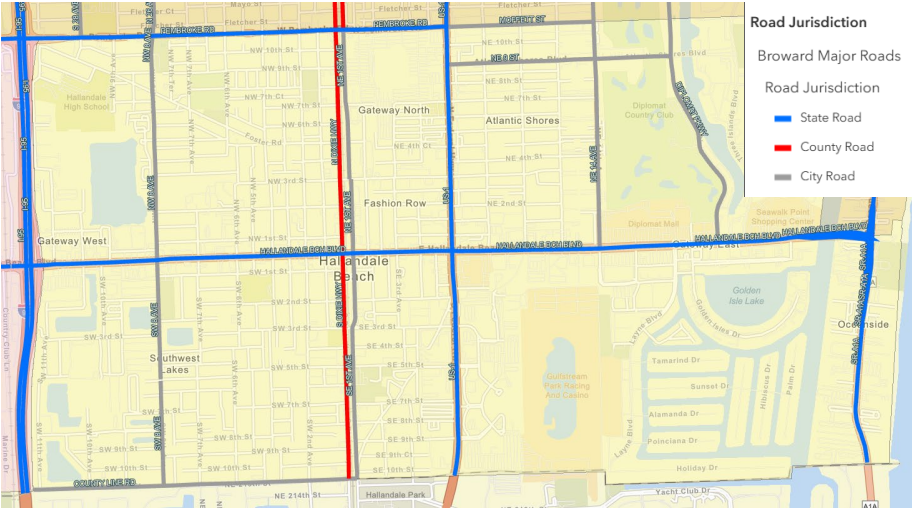
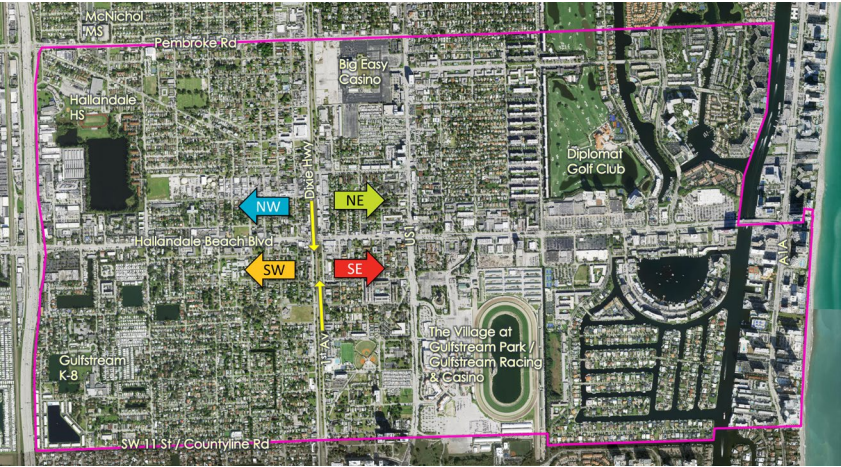


About Hallandale Beach.....

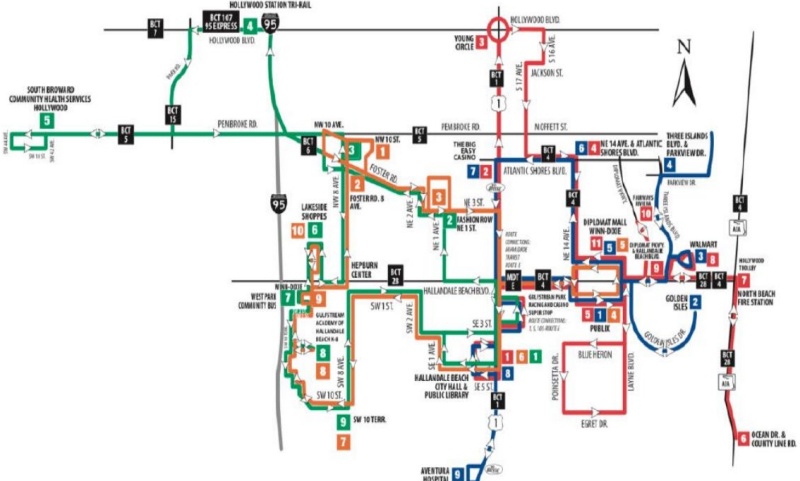


Hallandale Beach TMP: Introduction Maps

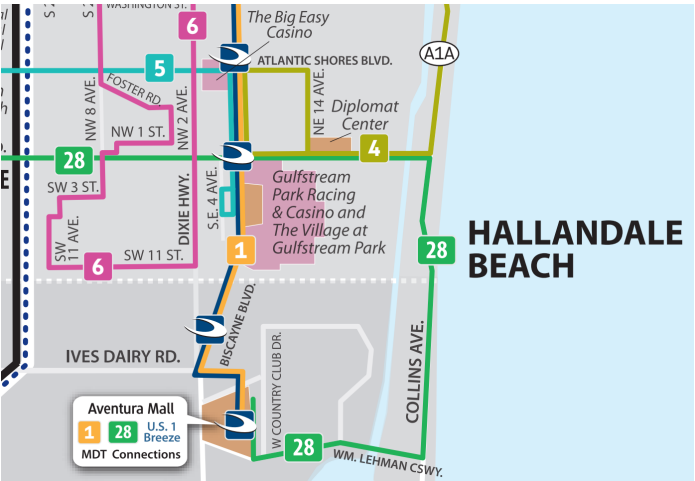
Roadway Jurisdiction



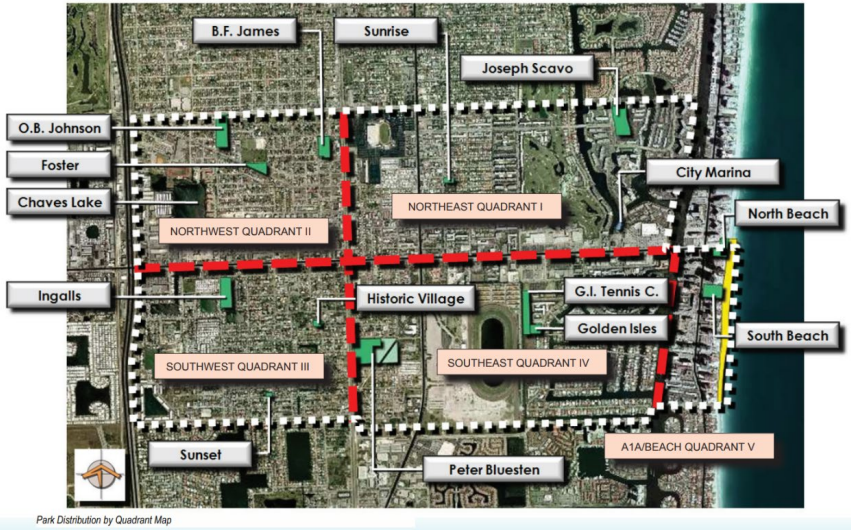
“Cloud” Community Shuttle 4 Routes



BCT Routes



City Parks



Hallandale Beach TMP: Notable Demographics

2023 American Community Survey (5-Year Estimates)



Median Age = 46.3 years

Broward County is 41.3 years



23.6% of population is
Age 65+

17.5% of Broward County

11.5% of population is
Age 75+

7.5% of Broward County

Why this is notable: Senior citizens are more likely to travel with mobility aids (walkers, wheelchairs, motorized scooters); May have reduced vision, hearing, or reaction time; May walk slower than other pedestrians and require longer crossing times; Often considered transit dependent either due to financial constraints (fixed-income) or mobility challenges



\$48,518 Median Household **Income**

\$74,534 for Broward County

21.5% of households live
Below Poverty Level

12.9% of Broward County

Poverty by Age

27.5% = 18-

27% = 65+

Why this is notable: Low-Income residents are less able to afford a car, or reliable car; Often considered transit dependent due to financial limitations; More likely to rely on transit or non-motorized transportation to access work, childcare, or education



9.9% of households have **No Vehicles**

6.8% of Broward County

61% of households have **1 Vehicle**

41% of Broward County

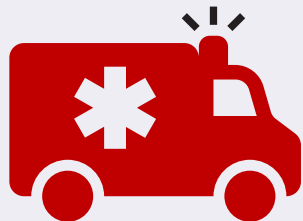
3% of workers ride **Public Transit to Work**

2% of Broward County

Why this is notable: Households without cars are considered transit dependent; Households with no or one car more likely to rely on transit or non-motorized transportation to access daily destinations; Planning for transit riders includes the need to consider sidewalks, crosswalks, lighting, and bike paths leading to and from transit stops

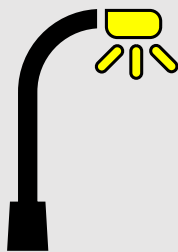
Hallandale Beach TMP: 5-Year Injury Crash Trends (2020 – 2024)

1,270 Injury Crashes



Injury Crashes include Injury + **KSI**
17 “**K**” = Person was **Killed** (*Fatality*)
58 “**SI**” = Person was **Seriously Injured**

30% Injury Crashes occurred at **Night**

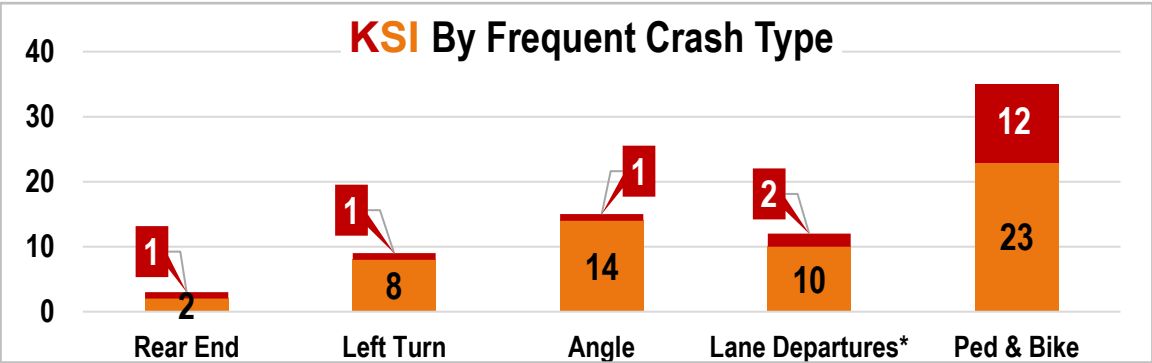
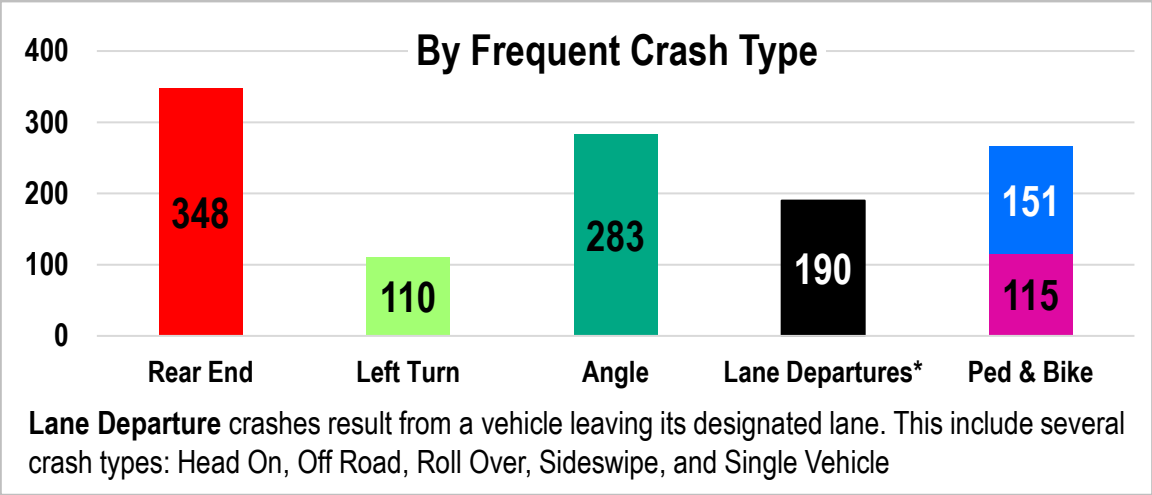
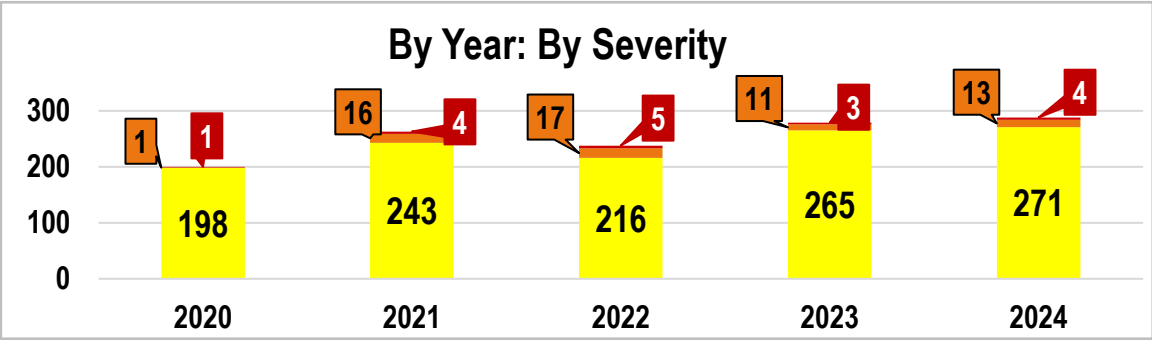


50% of **KSI** Crashes
28% of **Ped & Bike** Crashes
60% of **Ped & Bike KSI** Crashes

22% Injury Crashes with **Aging Driver**

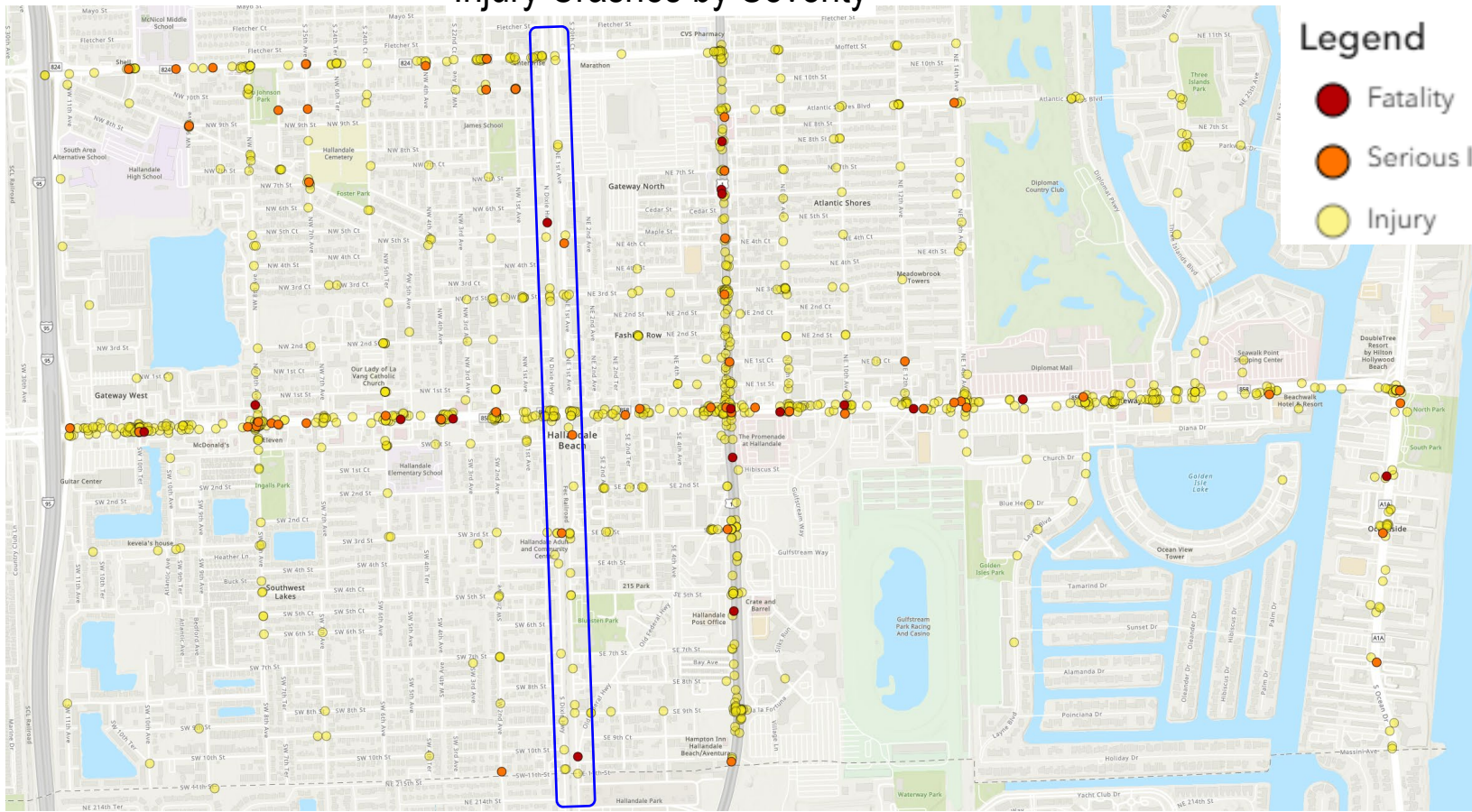


21% of **KSI** Crashes
19% of **Ped & Bike** Crashes
31.5% of **Angle** Crashes

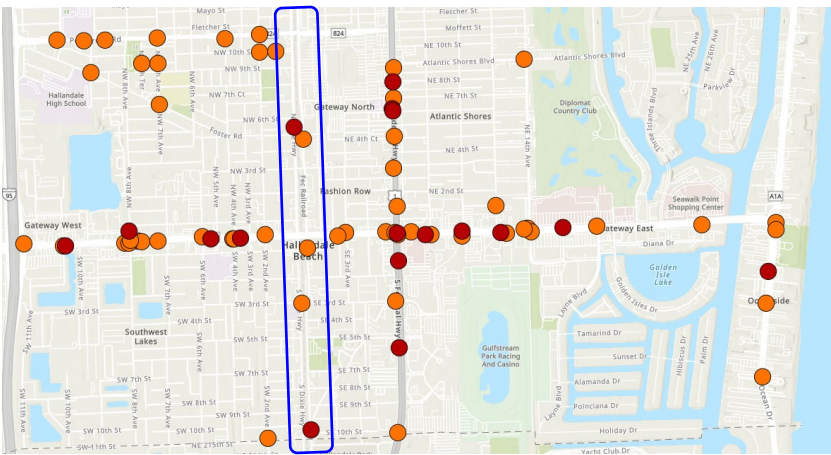


Hallandale Beach TMP: 5-Year Injury Crash Trends (2020 – 2024)

Injury Crashes by Severity



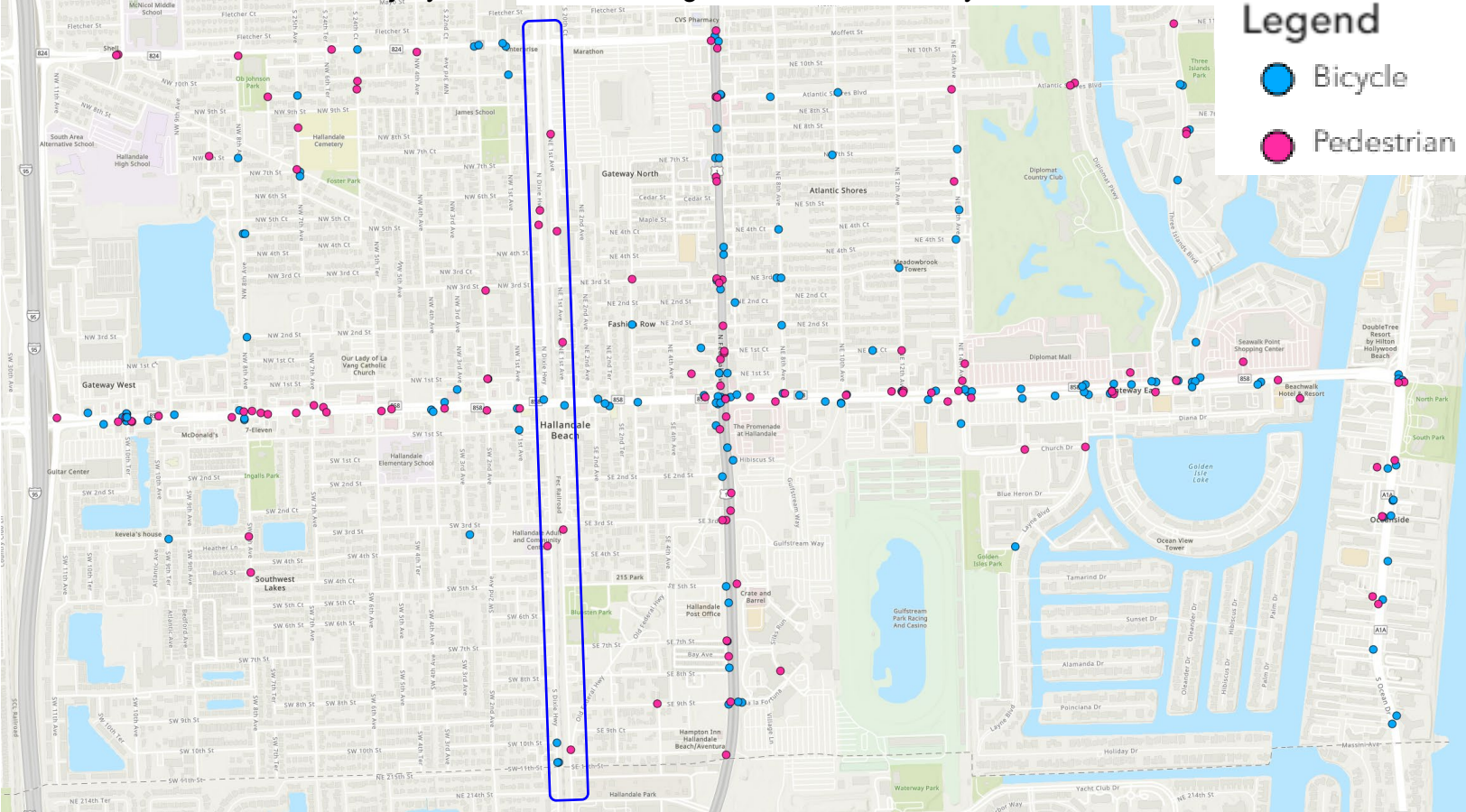
KSI Crashes (67)



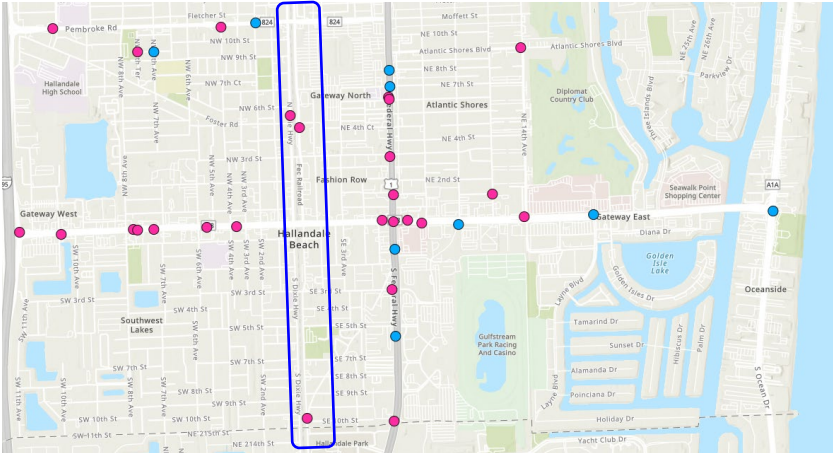
While the majority of KSI crashes occurred on state-owned arterial roadways (Pembroke Rd, US1, Hallandale Beach Blvd, A1A) and County-owned Dixie Hwy, several KSI occurred on local roadways, notably in the NW quadrant.

Hallandale Beach TMP: 5-Year Injury Crash Trends (2020 – 2024)

Injury Crashes involving Pedestrians or Bicyclists



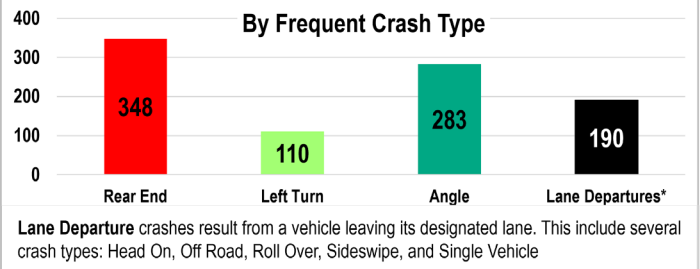
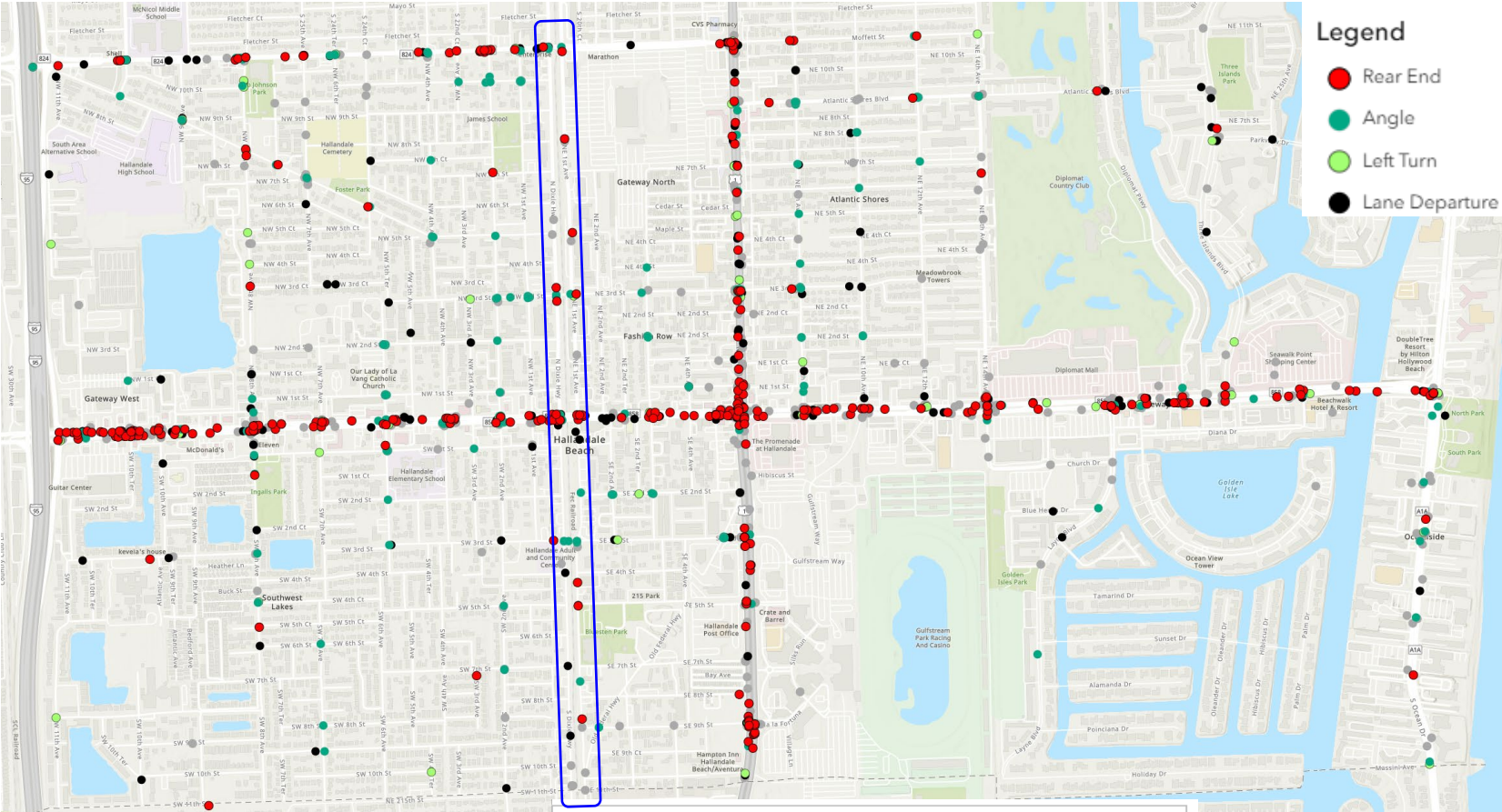
KSI Crashes involving Pedestrians or Bicyclists (35)



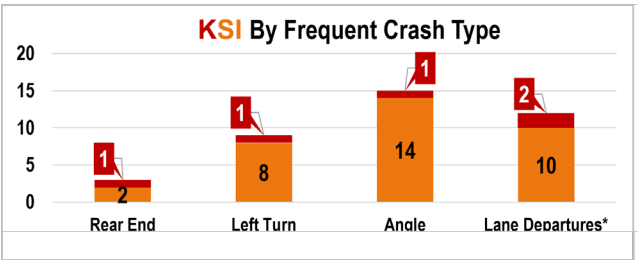
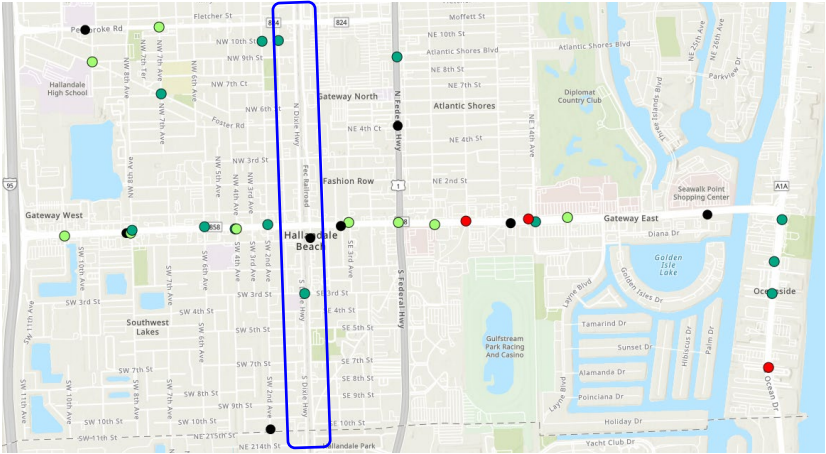
Crash severity decreases on A1A, which may be related to the decreased ped / bike activity at night on A1A (60% of PED / Bike KSI occurred at night). The vast majority of Ped / Bike KSI are on Hallandale Beach Blvd and US1. But there are also KSI on local roadways.

Hallandale Beach TMP: 5-Year Injury Crash Trends (2020 – 2024)

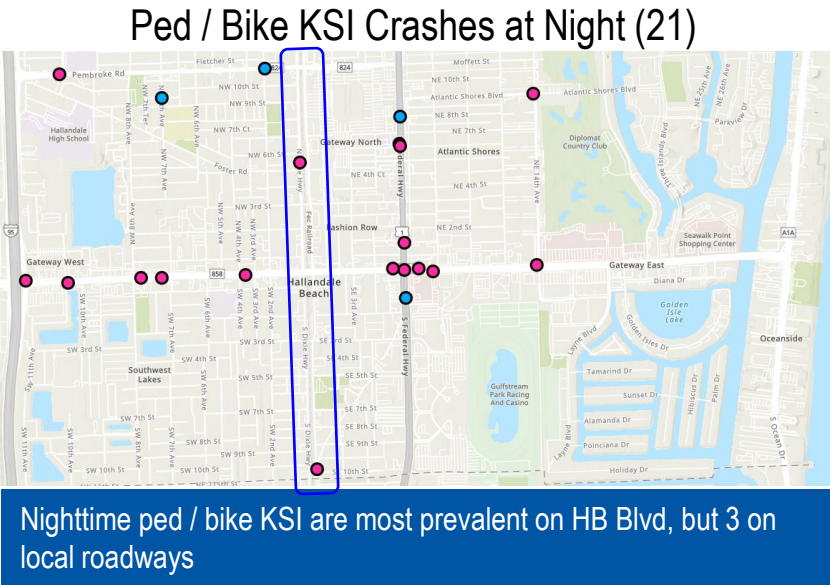
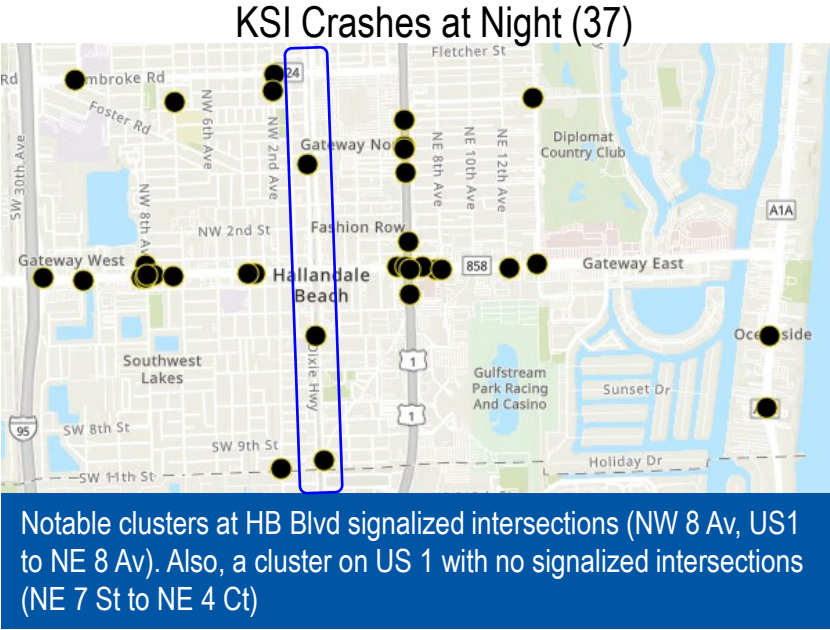
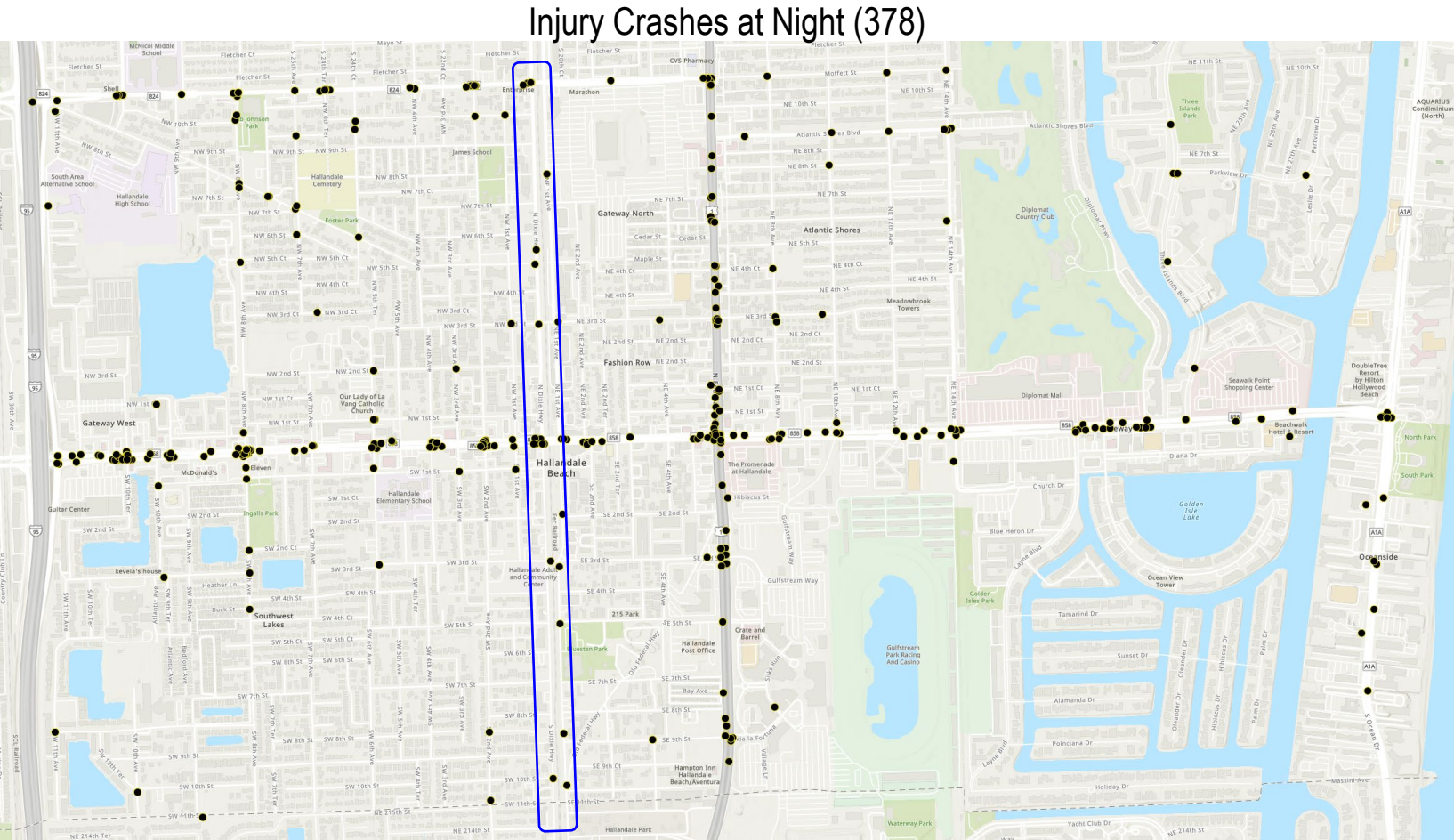
By Frequent Crash Type (excluding ped / bike)



KSI Crashes by Frequent Crash Type



Hallandale Beach TMP: 5-Year Injury Crash Trends (2020 – 2024)



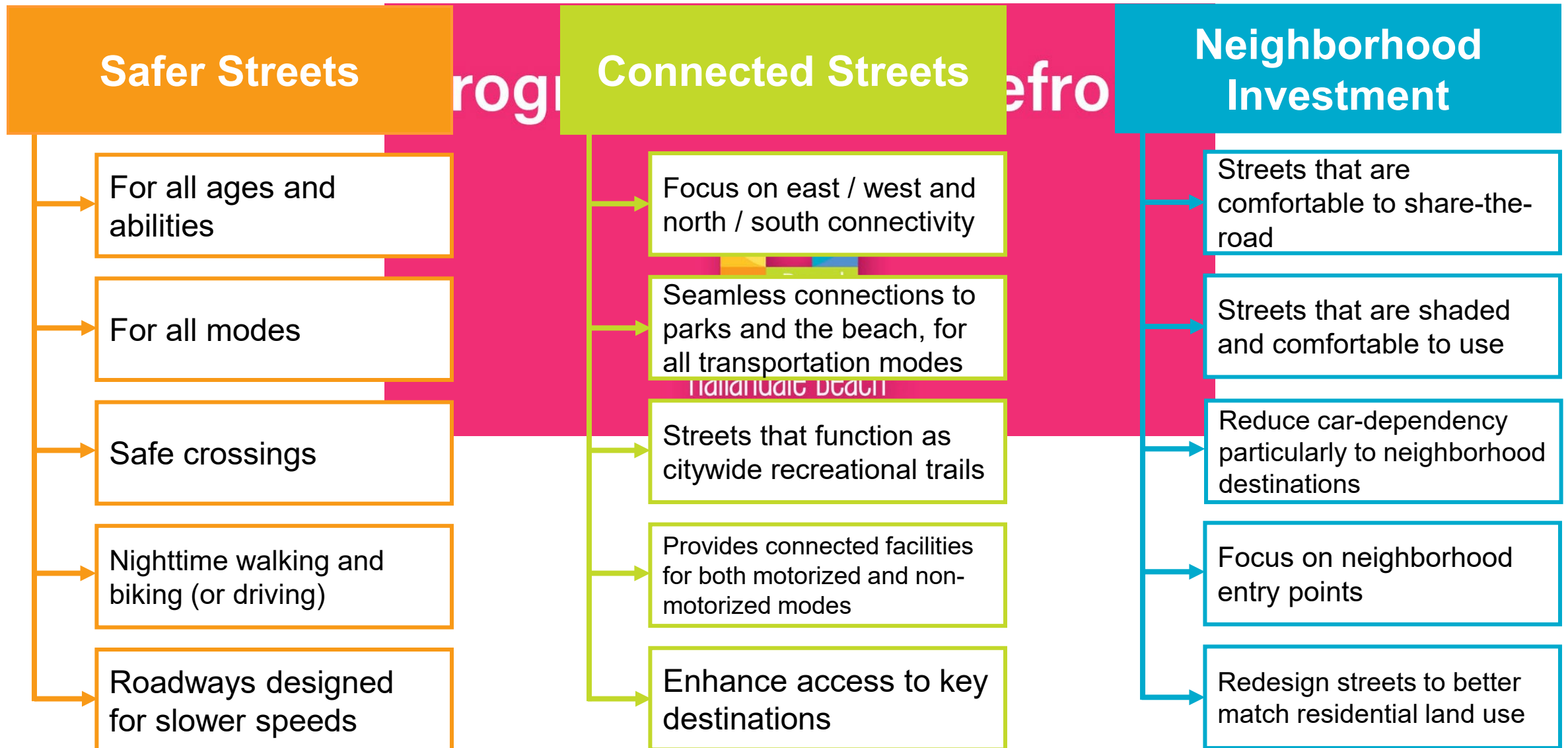
**30%** Injury Crashes occurred at Night

50% of KSI Crashes

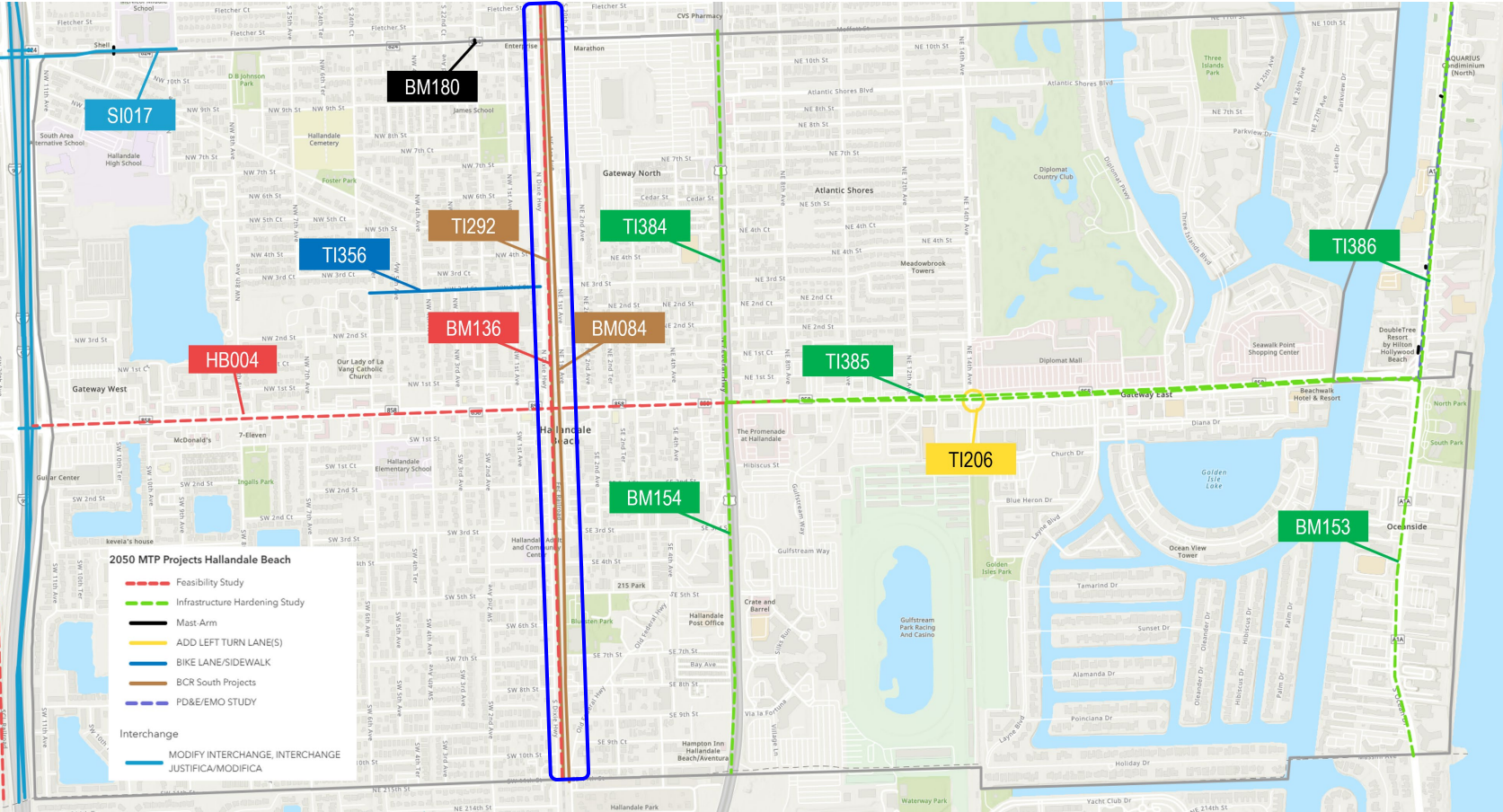
28% of Ped & Bike Crashes

60% of Ped & Bike KSI Crashes

Hallandale Beach TMP: Vision “Progress at the Forefront”



Hallandale Beach TMP: MTP 2050 Projects

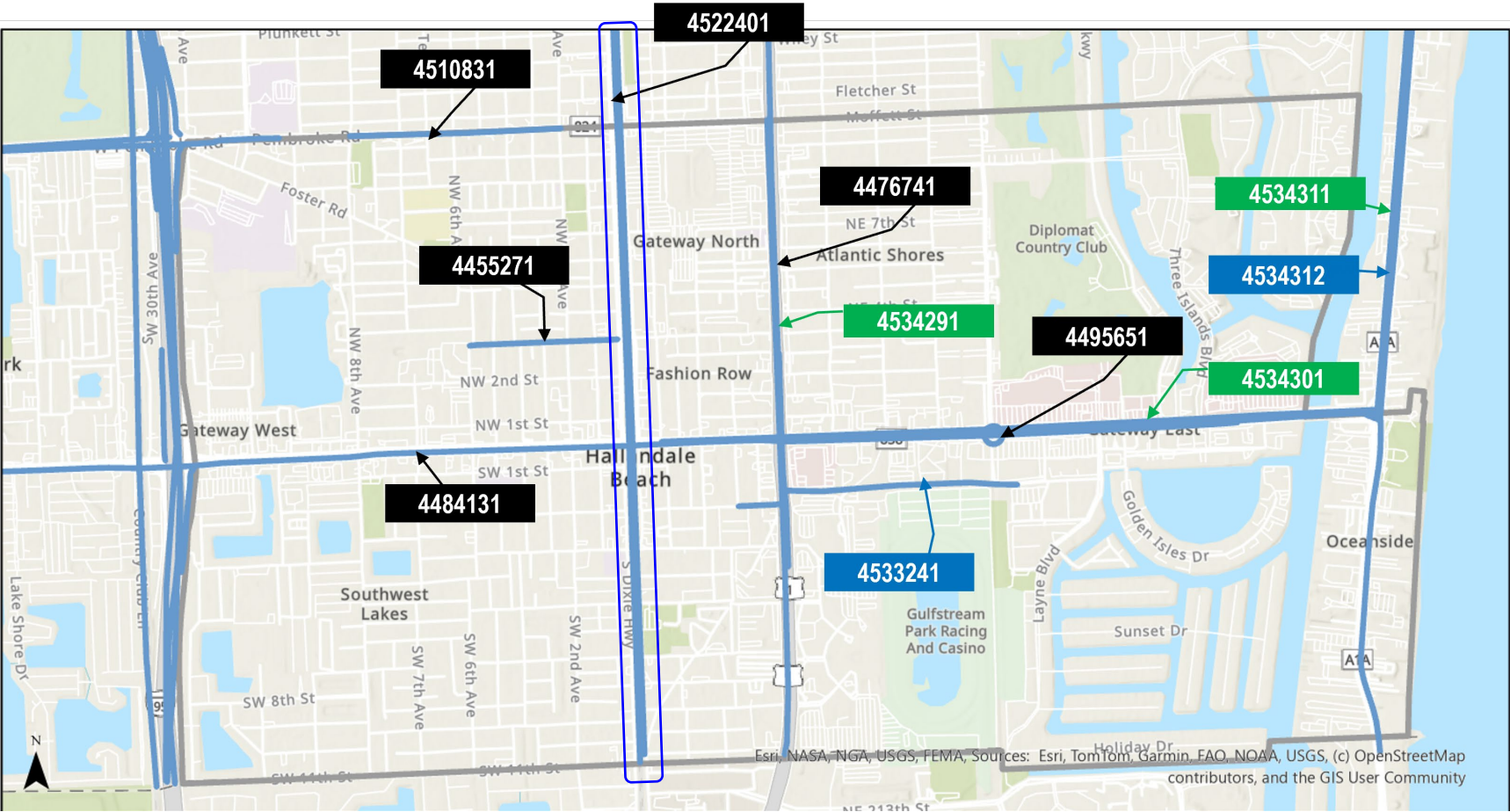


Projects not shown are those on I95, TSM&O on US1, and railroad corridor management

- No cost feasible projects identified for County-owned Dixie Highway in HB.
- BCR South has County-Match funds

Project	ID	Time band
Broward Commuter Rail South - Economic Development Project	BM084 / TI292	2031-2035
Railroad grade Separation Study: FEC from Broward/Miami-Dade County Line to FLL Airport	BM136	2031-2035
Infrastructure Hardening Study: SR-A1A from Arizona St to Broward/Miami-Dade County Line	BM153	2036-2040
Infrastructure Hardening Study: US-1 from Hallandale Beach Blvd to Broward/Miami-Dade County Line	BM154	2036-2040
Feasibility Study: Hallandale Beach Blvd Corridor from I-95 to NE 8th Avenue	HB004	
SR 824/Pembroke Rd. from Park Rd. to S. of 27th Ave.	SI017	2031-2035
Left Turn Lanes: SR-858/Hallandale Beach Blvd @ NE 14 Av	TI206	2025-2029 TIP
REV improvements: NW 3rd St From NW 6th Av To Dixie Hwy	TI356	2025-2029 TIP
Infrastructure Hardening Study: SR-5/US-1 From SR-858/Hallandale Beach Blvd To SR-824/Pembroke Rd	TI384	2025-2029 TIP
Infrastructure Hardening Study: SR-A1A – Arizona St to SR-858/Hallandale Beach Blvd	TI386	2025-2029 TIP
Infrastructure Hardening Study: SR-858/Hallandale Beach Blvd From SR-5/US-1 To SR-A1A	TI385	2025-2029 TIP

Hallandale Beach TMP: 2025-2029 TIP (as of 5/2025 – anticipated to be updated 7/2025)



Legend

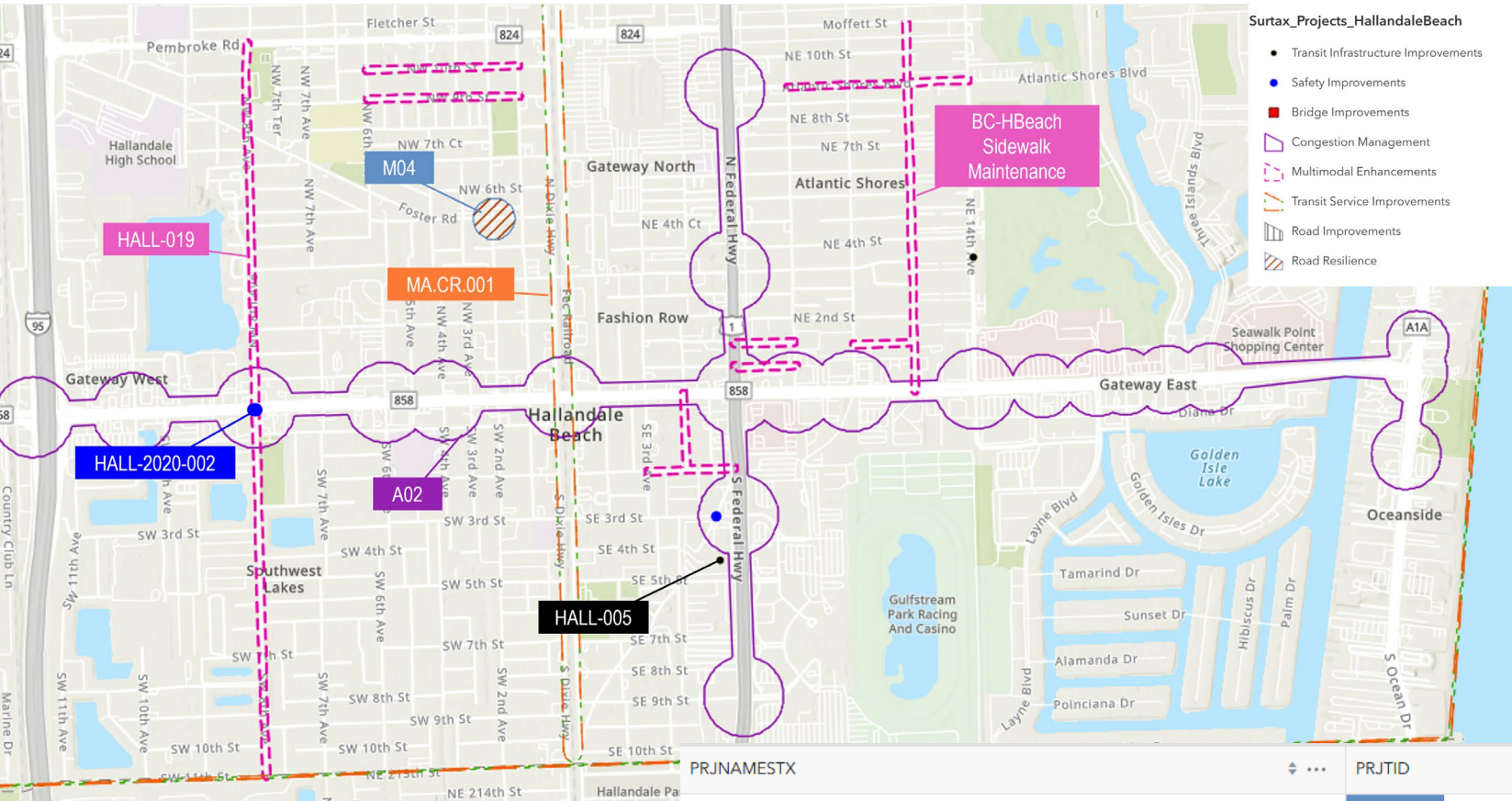
- Infrastructure Hardening Study
- PD&E Study
- Construction Project

- No TIP projects identified for County-owned Dixie Highway in HB
- BCR South has County-Match funds

Project	ID	Time
REV improvements: NW 3rd St From NW 6th Av To Dixie Hwy	4455271	2026 + 2027
SE 2 nd St / Hibiscus St / Church St PD&E Study	4533241	2029
US-1; Countyline to Pembroke Rd - RRR	4476741	2025
Infrastructure Hardening Study: SR-5/US-1 From SR-858/Hallandale Beach Blvd To SR-824/Pembroke Rd	4534291	2028
Pembroke Rd; from NW 8 Av to NW 2 Av – Lighting	4510831	2025
Left Turn Lanes: SR-858/Hallandale Beach Blvd @ NE 14 Av	4495651	2027 + 2029
Hallandale Beach Blvd; from NW 2 AV to A1A - RRR	4484131	2026
Infrastructure Hardening Study: SR-858/Hallandale Beach Blvd From SR-5/US-1 To SR-A1A	4534301	2029
Infrastructure Hardening Study: SR-A1A – Arizona St to SR-858/Hallandale Beach Blvd	4534311	2025
SR-A1A – Arizona St to SR-858/Hallandale Beach Blvd – PD&E	4534312	2028
Broward Commuter Rail South - Economic Development Project	4522401	When FTA grant is secured

Project not labeled is RR Management

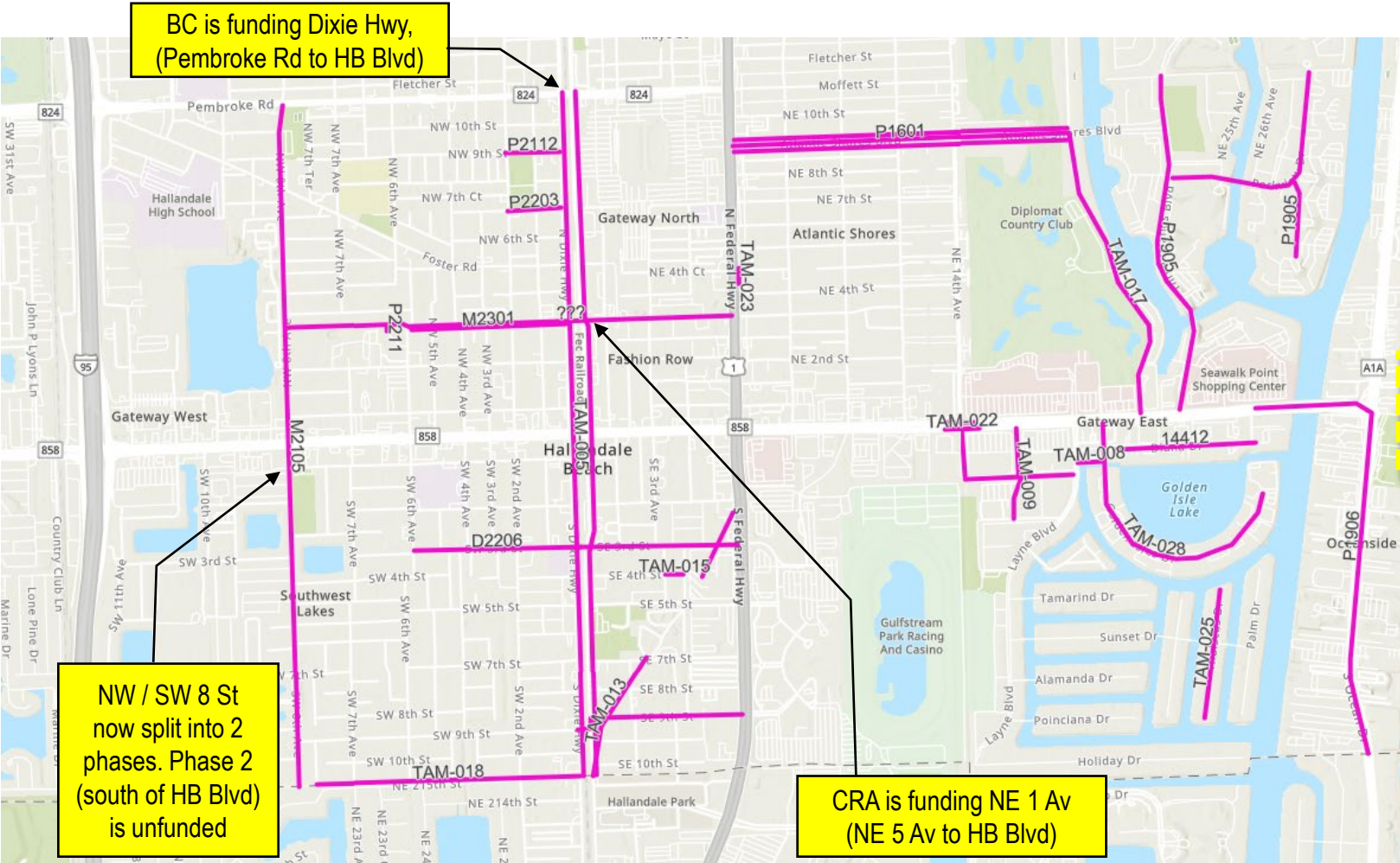
Hallandale Beach TMP: Broward MAP / Surtax Projects



- Status Request for Broward County projects:
- Dixie Hwy project
 - Surtax GIS information did not include Dixie Hwy / 21st Av Complete Streets Project
 - Low-Stress MM Transportation Network
 - Draft via public meetings includes NW 8 Av (end at HB Blvd), Dixie Hwy, and HB Blvd
 - BCT COA
 - When will recommendations be completed?
- NW / SW 8 Av

PRJNAMESTX	PRJTID	PRJNAME	PRJACTIVIT
Road Resilience at: NW 2 Ave	M04	Foster Road Mast Arm	Complete
Congestion Management - Adaptive Signal Control at: Hallandale Beach Blvd	A02	Hallandale Beach Blvd Adaptive Signals	Construction
Multimodal Enhancements at: NW/SW 8th Ave	HALL-019	NW/SW 8th Ave Complete Street Project	Construction
Transit Infrastructure Improvements in: Hallandale Beach	HALL-005	Citywide Bus Shelter Improvements	Construction
Regional Impact: Transit Service Study - Commuter Rail	MA.CR.001	Commuter Rail Development & Environment	Planning
Safety Improvements at: Hallandale Beach Blvd, South Dixie Hwy, Federal Hwy	HALL-2020-002	Hallandale Beach Crosswalk Updates	Construction
Transit Infrastructure Improvements in: Hallandale Beach	HALL-026	Citywide Bus Stops Digital Signage	Construction
Multimodal Enhancements in: Hallandale Beach	BC-HBeach Sidewalk Maintenance	Hallandale Beach Priority Sidewalk Maintenance	Construction

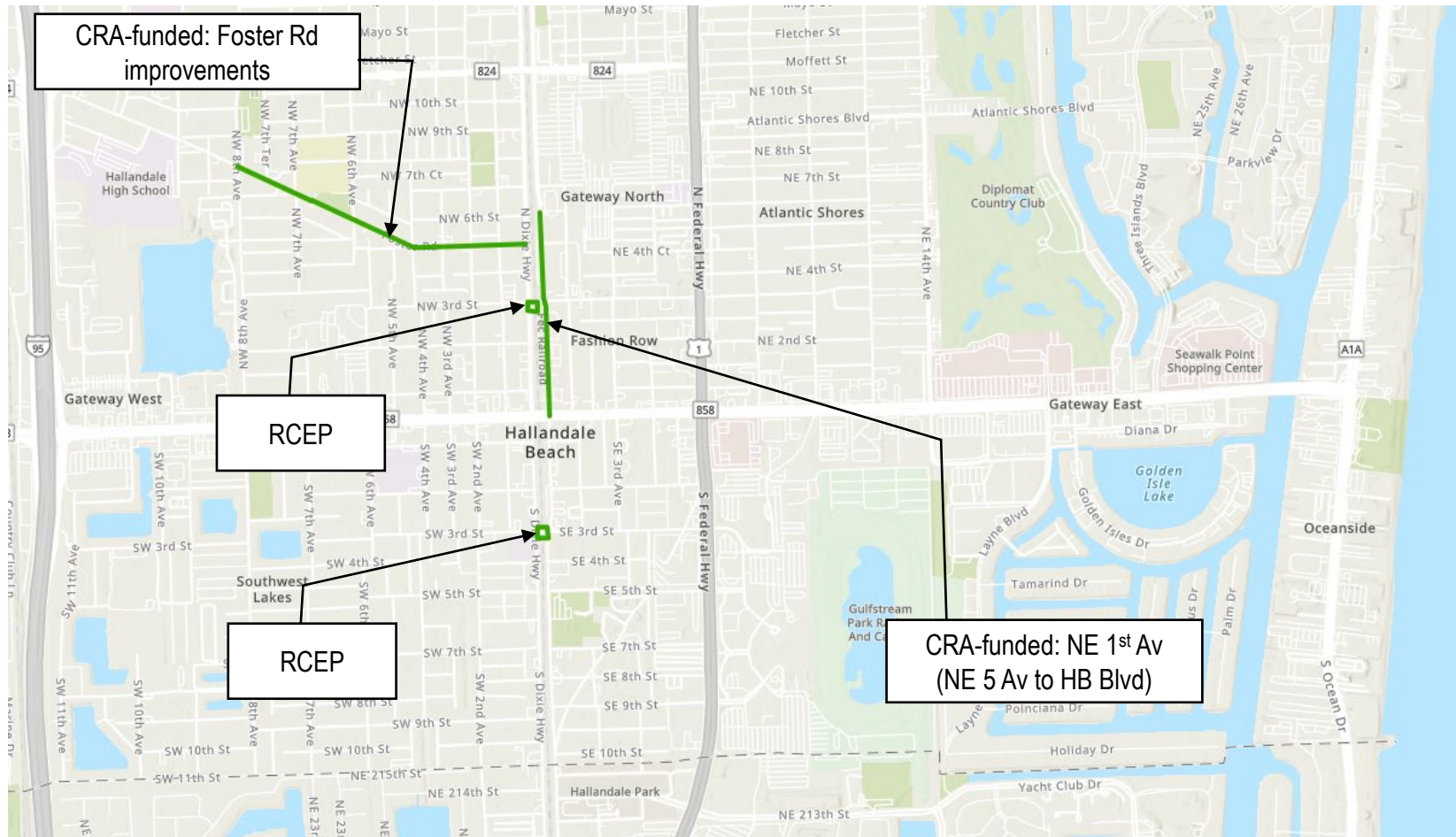
Hallandale Beach TMP: City CIP Projects



Project	ID	FY	Cost
Diana Drive Roadway & Drainage Improvements Project	14412	2027	\$120,711
(SW)-SE 3rd Street Sidewalk Improvements Project	????	2024-2028	\$92,580 ?
SE SW 3rd St Replace and Provide ADA 5' wide sidewalks	D2206	2024-2028	\$468,875
NW SW 8th Ave Complete Street Project	M2105	2024-2028	\$221,000
NW 3rd Street Complete Street Project (Dixie Hwy to 5th Terrace)	M2301	2024-2028	\$626,995
Atlantic Shores Roadway Improvement	P1601	2024-2028	\$1,008,965
Three Islands Reuse Irrigation - Phase II	P1905	2024-2025	\$969,250
LED STREETLIGHTS - A1A AND HALLANDALE BEACH BRIDGE	P1906	2022 to 2025	\$76,990
48th Year Community Block Grant Development	P2112	2024 to 2025	\$390,227
49th Year Community Block Grant Development	P2203	New	\$268,917
Dixie Hwy 12 in water main	P2211	2024 to 2028	\$6,706,800
Dixie Highway & NE/SE 1st Avenue Corridor from County Line to Pembroke Road. (Lane Repurposing & Complete Street Project)	TAM-005	2027-2028	\$1,683,000 ?
Diana Drive Extension Project	TAM-008	2026-2028	\$250,000 (FY 2026)
Church Drive Complete Street Project	TAM-009	2024-2028	\$207,777 (FY 2027)
NW 3rd Street Expansion to NW 8th Ave.	TAM-012	2025-2028	\$830,000 (FY 202)
Old Federal Highway & SE 3rd Street Safety Project	TAM-013	2024-2028	\$150,000 (FY 2027)
SE 4th Street Facility Extension.	TAM-015	2025-2028	\$39,600 (FY 2025)
SE 9th Street FEC Rail Crossing Realignment	TAM-016	2026-2028	\$284,048 (FY 2026)
Diplomat Parkway Bike Path Improvement	TAM-017	2026-2028	\$110,000 (FY 2026)
County Line Road - SW 11th St Bicycle Path Improvement	TAM-018	2026-2027	\$33,000 (FY 2026)
Hallandale Beach & NE 14th Ave Dual Turn Lanes	TAM-022	2027-2028	\$115,500 (FY 2027)
NE 4th Court Median Opening	TAM-023	2027-2028	\$107,525 (FY 2027)
Atlantic Shores Blvd. From Federal Hwy to Diplomat Pkwy	TAM-024	2024-2028	\$1,008,965
Hibiscus Drive Roadway Improvement	TAM-025	2026 to 2028	\$11,209,000
Golden Isles Safe Neighborhood District Roadway Improvement	TAM-028	2025 to 2026	\$1,265,000

Transportation Projects not shown [City's GIS Shapefiles do not include specific locations]: Crosswalk upgrades - 57 intersections (M2101), Citywide Replacing Existing Damaged Sidewalks – 36,000 LF (M2102), Citywide Bus Shelter Improvements (M2103), Design and Construction of ADA Compliant Community Shuttle Bus Stops – 43 locations (M2302).

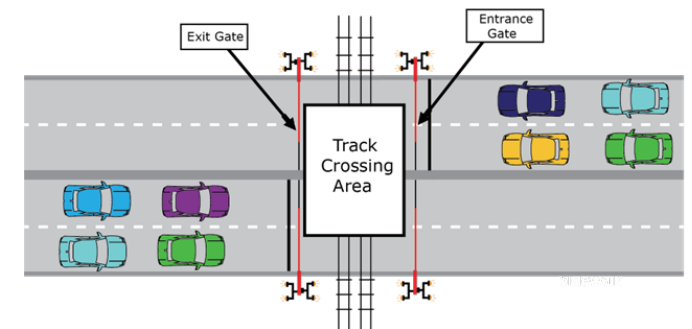
Hallandale Beach TMP: “Other” Projects



RCEP

Hallandale Beach has two FEC crossings (NE 3 St and SE 3 St) in the Railroad Crossing Elimination Program (RCEP) Grant called the "Broward County Sealed Corridor Project".

Both crossings are adding Exit Gates which will "seal" the space to not allow vehicles to go between the gates (also known as "four-quadrant gates")



Hallandale Beach TMP: Next Steps

