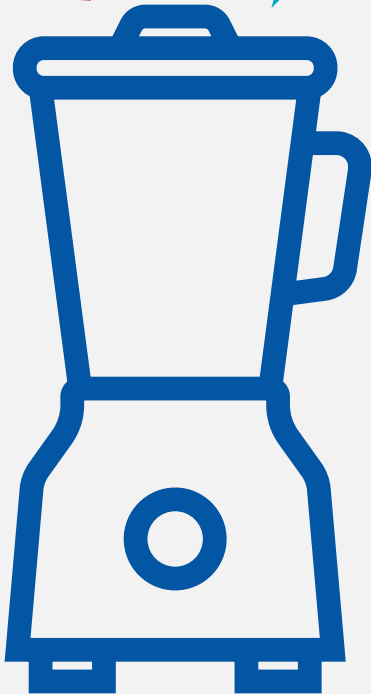


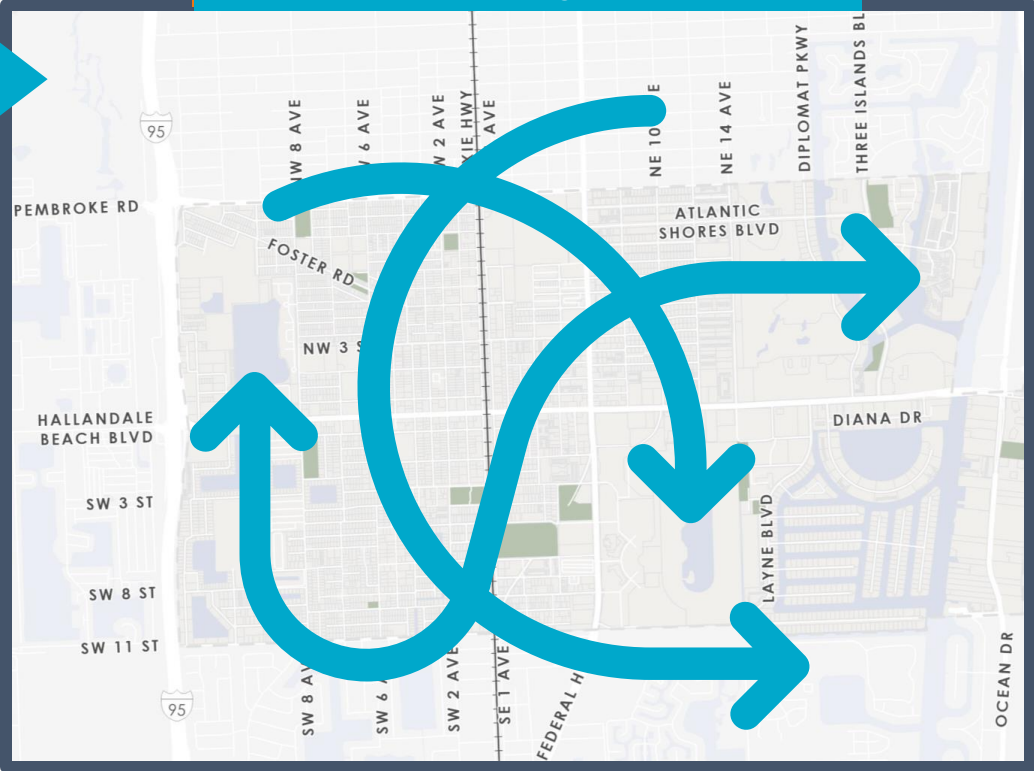
Hallandale Beach TMP: Plan Study Area

Considerations

Vision, Goals, & Objectives	Level of Traffic Stress
Safety / Injury Crashes	Existing Conditions
Speeding	Survey Monkey Results
Programmed Improvements or Studies	Adjacent Destinations
Transit Access	Other Considerations

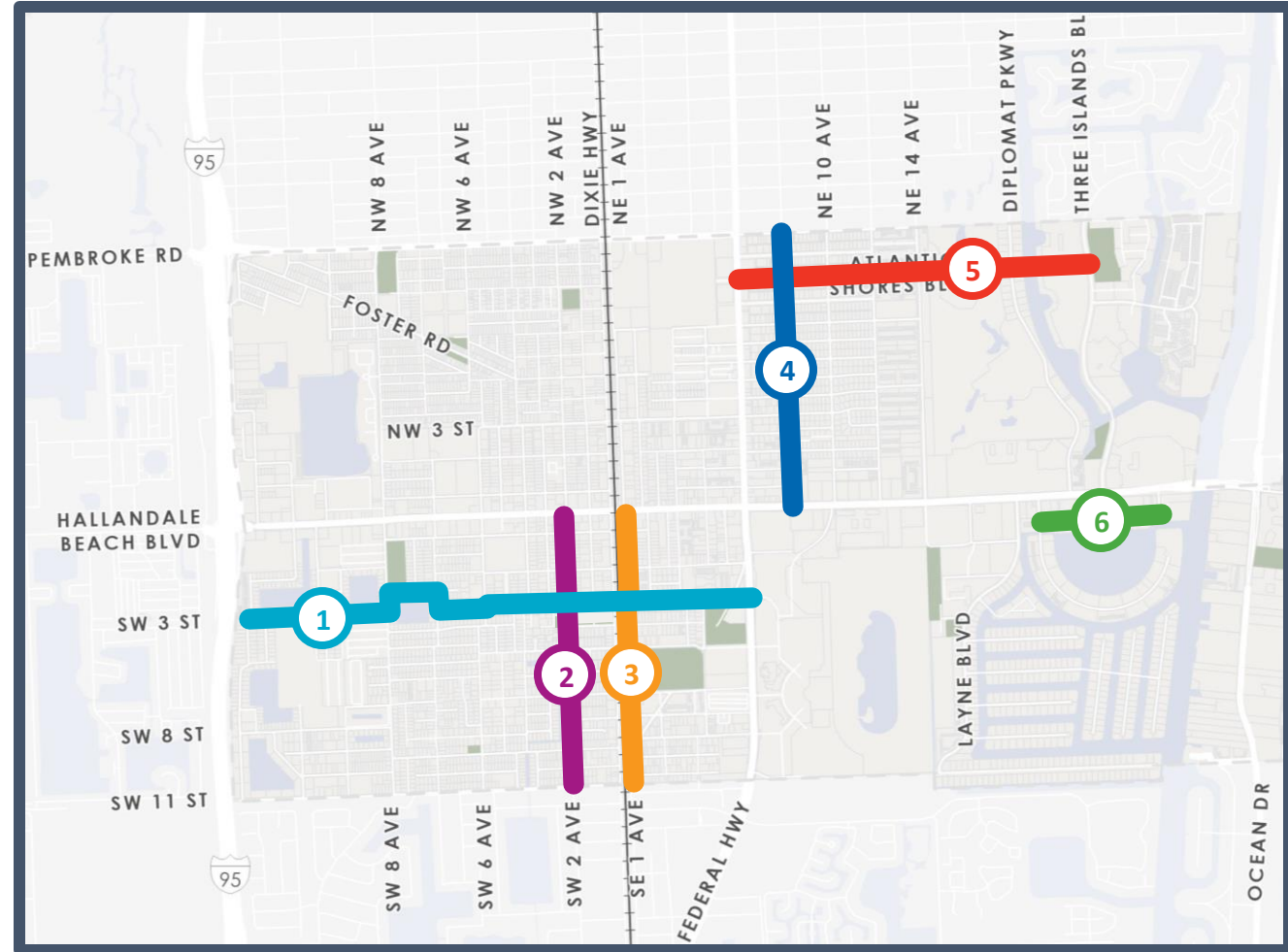


Plan Study Area



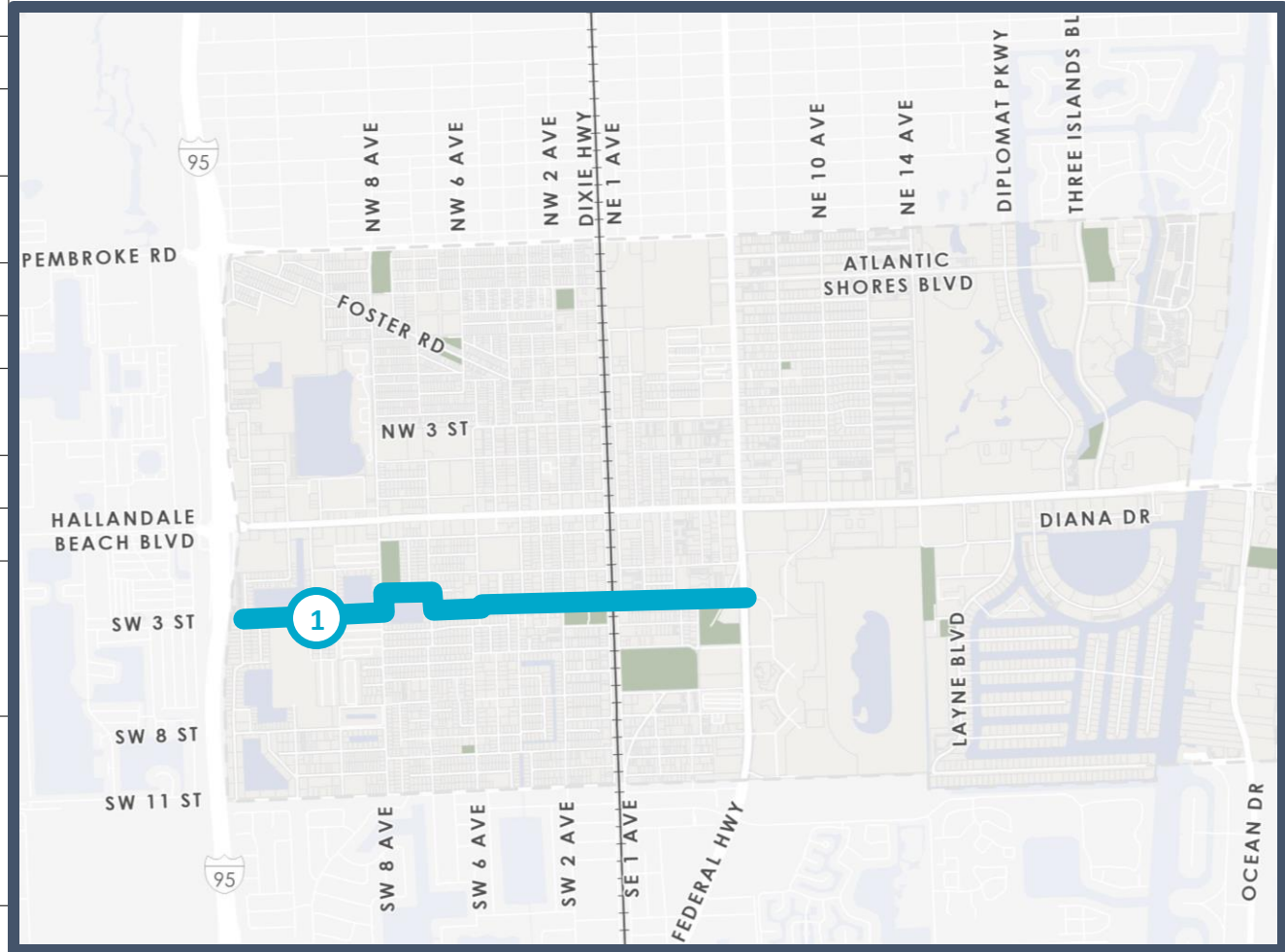
Hallandale Beach TMP: Plan Study Area

ID	Roadway	Limits
1	SW / SE 3 St	SW 11 Av to US 1 (+ SW 2 Ct connector)
2	SW 2 Av	Hallandale Beach Blvd to Countyline Rd
3	SE 1 Av	Hallandale Beach Blvd to Countyline Rd
4	NE 8 Av	Moffett St to Hallandale Beach Blvd
5	Atlantic Shores Blvd	US1 to Three Islands Blvd
6	Diana Dr	Golden Isles Dr to SE 26 Av



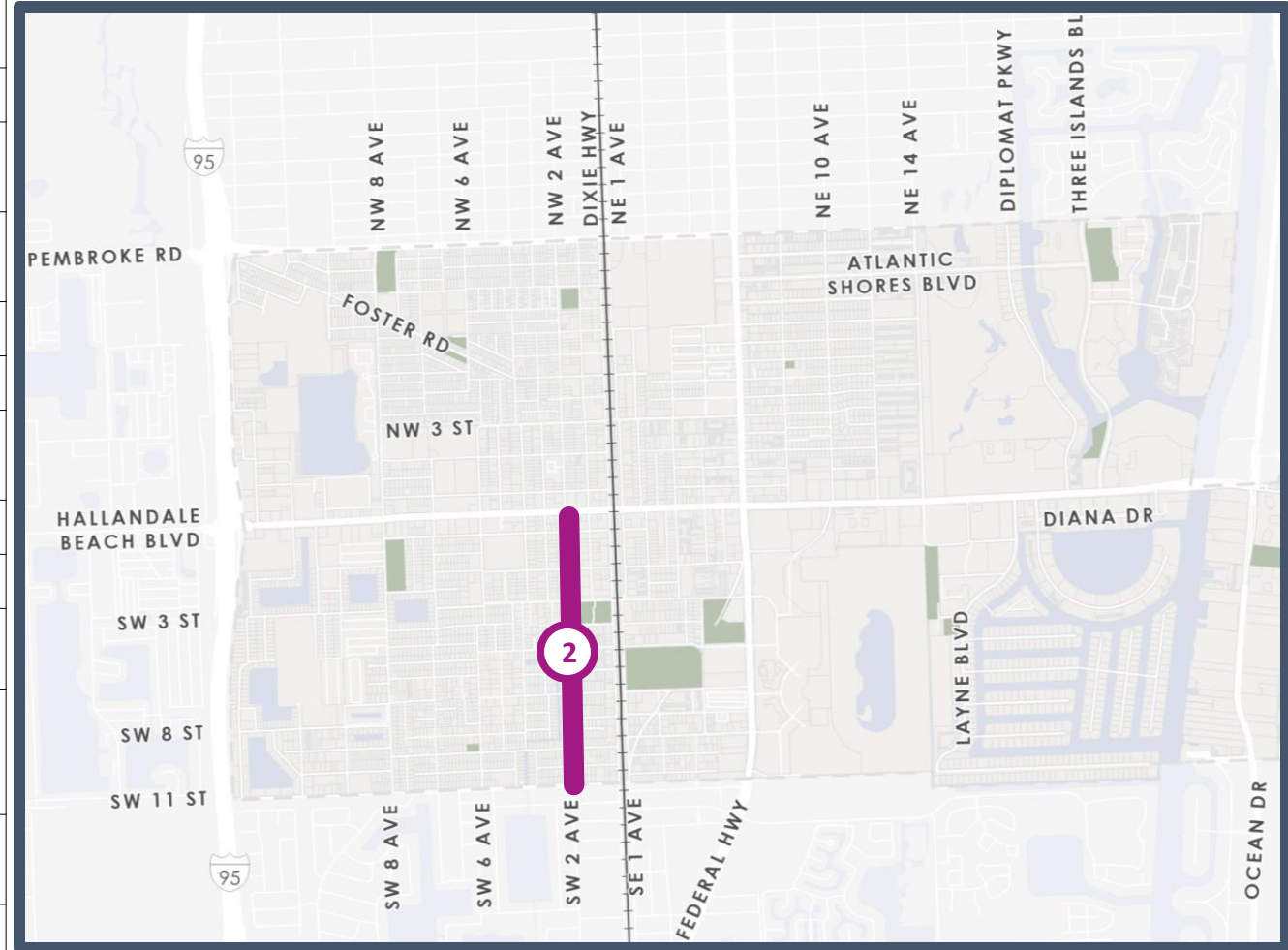
① SW / SE 3 St: SW 11 Av to US 1 (including SW 2 Ct connector)

Ownership	City • Int. @ Dixie Hwy = County • Int. @ US1 = State • RR Xing = FEC
TMP Vision	Neighborhood Street • East / West Connectivity • Neighborhood Entry Points • Reduce car dependency to key destinations • Seamless connections to parks • Traffic Calming • Safe Crossings
Destinations	Gulfstream Academy, Ingalls Park, City Hall campus, Gulfstream
Safety	Injury crashes along entire roadway • KSI @ Dixie Hwy and US1 • Ped / Bike Injury Crashes west of SW 8 Av • Ped Injury Crashes @ US1
Speed	25 MPH • 30 MPH @ SE 1 Av • 35 MPH @ Dixie Hwy • 45 MPH @ US1 • Traffic Calming west of SW 10 Av
Bike Facilities	None
Bike LTS	1 / 2 • Int. @ Dixie Hwy = 4 • Int @ SE 1 Av = 3 • Int. @ US1 = 4
Ped Facilities	Sidewalk gaps on SE 3 St • Missing crosswalks over Dixie Hwy & SE 1 Av St • Sidewalks abutting backout parking
Ped LTS	1 / 2 / 3 • Int. @ Dixie Hwy = 4 • Int @ SE 1 Av = 4 • Int. @ US1 = 4
Transit	BCT Route 6 • Cloud Routes 3 & 4 [1 and 2 @ City Hall]
Planned Improvements	Sidewalks (Surtax CIP Project) • FY 25 – 29 CIP D2206 = Sidewalks + ADA Ramps from SW 6 Av to US1 • Dixie Hwy Lane Repurposing [Broward County] • (Recently completed) RRR on US1 • HBCRA Art Trail • 2018 Mobility Roadmap Mid-term Multimodal improvements = Sharrows + Bike Lanes
Notable Conditions	Walk to School for Gulfstream Academy adjacent to Atlantic Av • Missing marked crosswalks throughout roadway • Overgrown landscaping SW 9 Av to Atlantic Ave impacting visibility • Ped Entrance (gate) to Ingalls Park • Lack of shade • Litter & debris at SE 1 Av • Access over FEC RR • Sidewalk gaps & disjointed crosswalks at Dixie Hwy & SE 1 Av
Survey Monkey	Priority Local Roadway - Noted 6 times • Destinations - #2 Parks • Concerns - #4 Cut Through Traffic in neighborhood
Other	Quick build opportunities • Opportunity to connect Ingalls Park to City Hall Campus • Opportunity for neighborhood gateway features and share the road bike facilities • FY 25 – 29 CIP includes P2406 = SW 3 St 10" Water Main in 2025



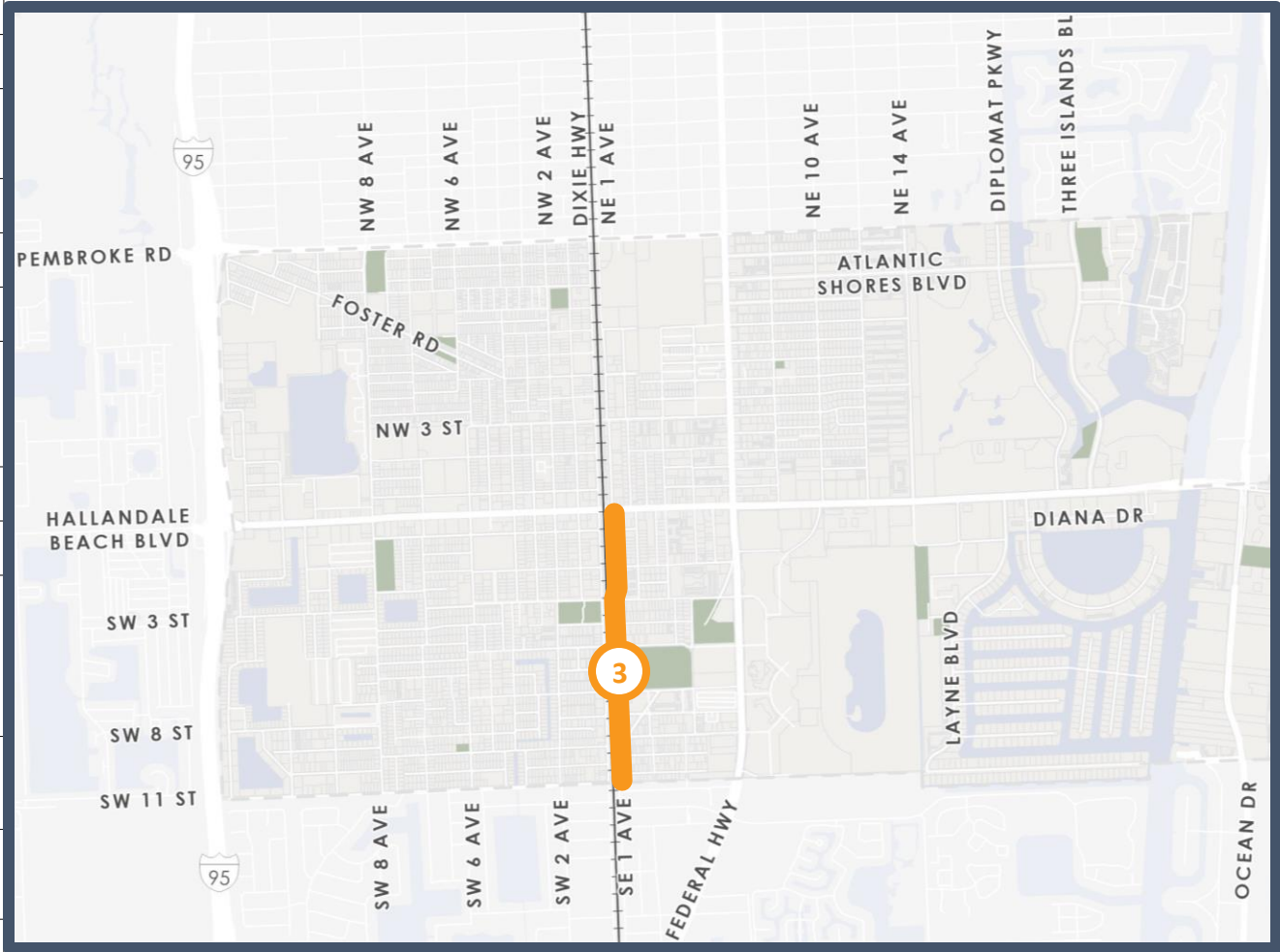
② SW 2 Av: Pembroke Rd to Countyline Rd

Ownership	City • Int. @ Pembroke Rd and HB Blvd = State
TMP Vision	Neighborhood Street • North / South Connectivity • Neighborhood Entry Points • Seamless connections to parks • Traffic Calming • Safe Crossings
Destinations	Curci Village • Retail on HB Blvd • Intersection with SW 3 St
Safety	Injury crashes along entire roadway • KSI @ HB Blvd and Countyline Rd • Ped / Bike Injury Crashes at HB Blvd
Speed	25 MPH • 30 MPH @ Countyline Rd • 40 MPH @ HB Blvd • 3 speed humps south of HB Blvd
Bike Facilities	None • Bike Lanes on HB Blvd
Bike LTS	2 / 3 • Int. @ HB Blvd = 4
Ped Facilities	No sidewalks from SW 10 St to SW 8 St • Numerous blocks with sidewalks only on one side of street • No marked crosswalks except at signalized intersections
Ped LTS	3 / 4
Transit	BCT Route 6 [Route 5 @Pembroke Rd, 28 @ HB Blvd] • Cloud Routes 3 & 4
Planned Improvements	Sidewalks (HB CRA Sidewalks) • Roadway Repaving (FY 25 / 26)
Notable Conditions	Allows for direct vehicular access from Pembroke Rd past Countyline Rd – likely attracting cut-through trips (Intersections at HB Blvd and Countyline Rd both allow unrestricted through movements)
Survey Monkey	Priority Local Roadway – Top 8 • Destinations - #2 Parks • Concerns - #4 Cut Through Traffic in neighborhood
Other	Quick build opportunities • Opportunity for neighborhood gateway features, traffic calming, and share the road bike facilities • Identify safety enhancements at HB Blvd



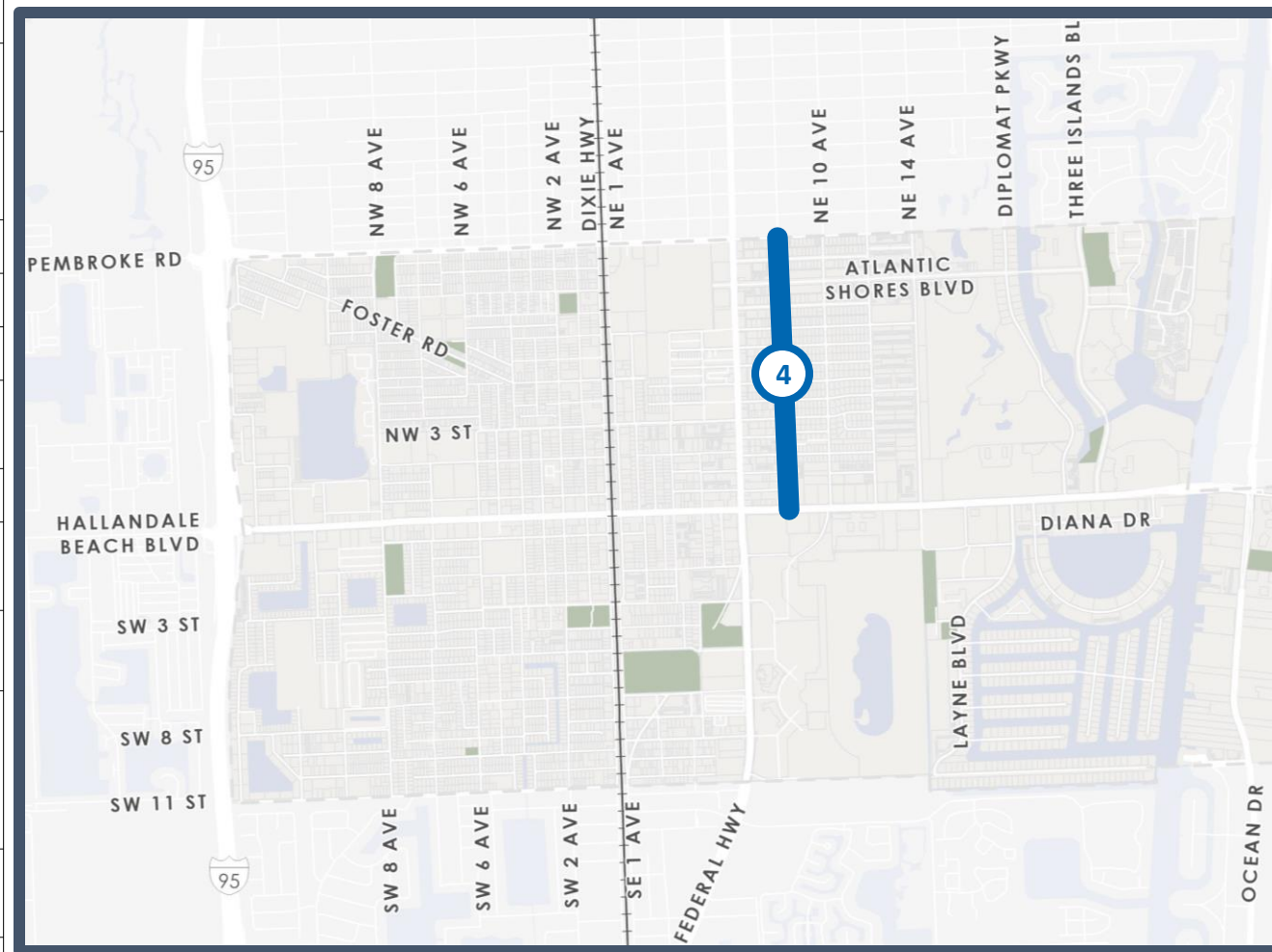
③ SE 1 Av: Hallandale Beach Blvd to Countyline Rd

Ownership	City • Int. @ HB Blvd = State
TMP Vision	Better Match Surrounding Land Use • Expand Transportation Choice • Seamless connections to parks • Traffic Calming
Destinations	Bluesten Park • YMCA • District 8
Safety	Injury crashes along entire roadway • KSI @ SE 1 St & Old Federal Hwy • Ped / Bike Injury Crashes @ HB Blvd, SE 3 St, & Old Federal Hwy
Speed	30 MPH • 35 MPH @ HB Blvd
Bike Facilities	None • Bike Lanes on HB Blvd
Bike LTS	3
Ped Facilities	Blocks with no sidewalks • Most sidewalks only on one side of street • No marked crosswalks at Countyline Rd / NE 215 St • Missing crosswalk at SE 3 St • Sidewalks abutting backout parking
Ped LTS	4
Transit	BCT [Route 28 @ HB Blvd] • Cloud Routes 3 & 4
Planned Improvements	Dixie Hwy Lane Repurposing [Broward County] • Sidewalk repairs between SE 1 St & SE 2 St via Sidewalks (Surtax CIP Project) • HBCRA Art Trail • 2018 Mobility Roadmap Mid-term Multimodal improvements = Road diet + 7ft sidewalks and bike paths
Notable Conditions	1-way NB roadway (pair with Dixie Hwy) • Sidewalk gaps & disjointed crosswalks at Dixie Hwy & SE 1 Av • Litter and debris • Lack of shade
Survey Monkey	Destinations - #2 Parks • Concerns - #2 Speeding or Dangerous Driving and #3 Sidewalks
Other	Roadway shifts from 2-way to 1-way NB at Countyline Rd / NE 215 St • Old Fed Hwy wedge at south end • Several redevelopment projects planned for adjacent vacant parcels • Opportunity for quick build traffic calming and quick build bike facilities • Identify safety enhancements at HB Blvd



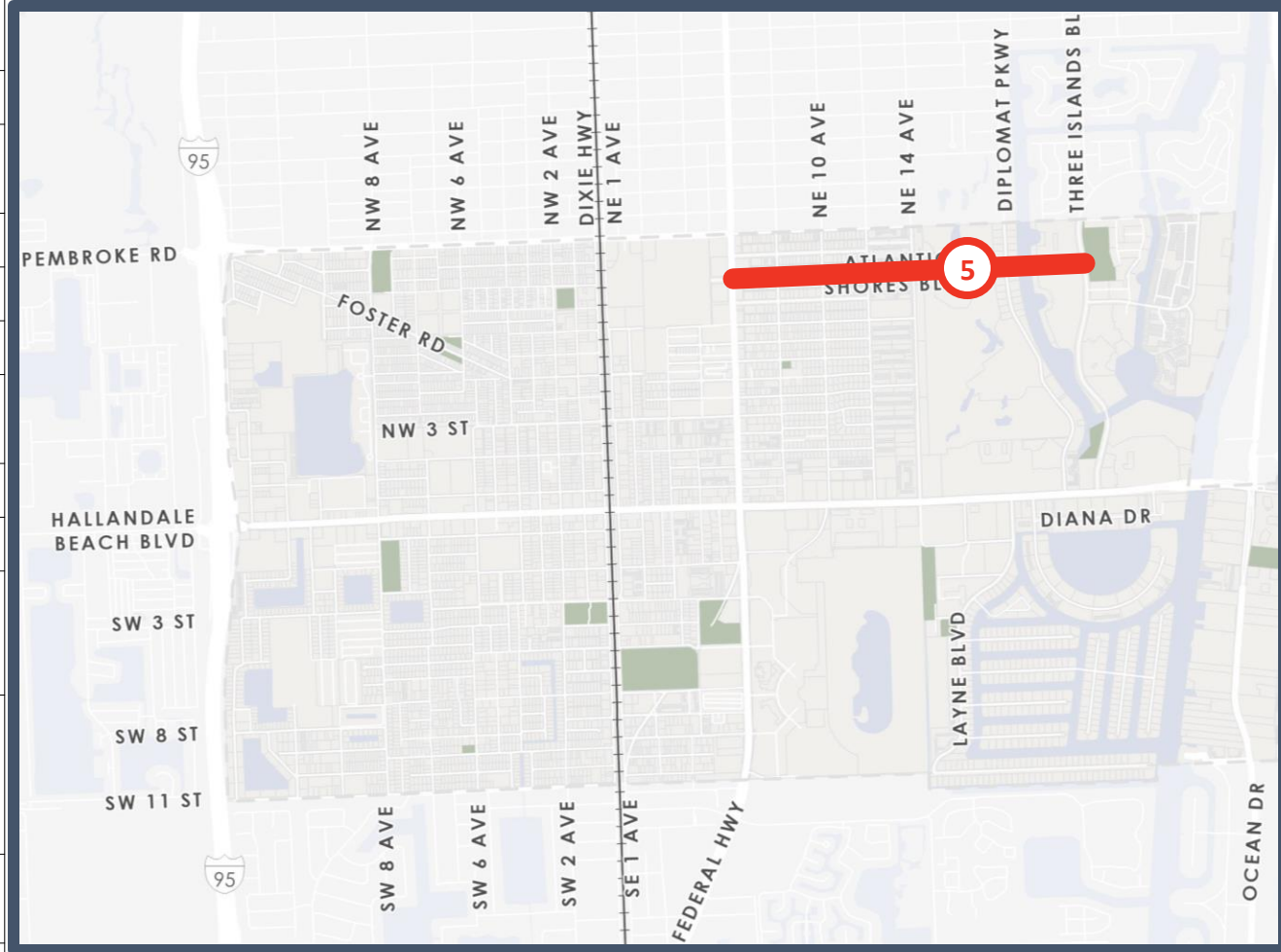
4 NE 8 Av: Moffett St to Hallandale Beach Blvd

Ownership	City • Int. @ HB Blvd = State
TMP Vision	Neighborhood Street • Neighborhood Entry Points • Reduce car dependency to key destinations • Seamless connections to parks • Traffic Calming • Safe Crossings
Destinations	Sunrise Park • Businesses on HB Blvd (future grocery store / redevelopment at SE corner of US1 and HB Blvd)
Safety	Injury crashes along entire roadway • KSI @ HB Blvd • Bike Injury Crashes along entire roadway • Ped Injury Crashes @ HB Blvd
Speed	25 MPH • 35 MPH @ HB Blvd • No stop signs from Atlantic Shores Blvd to HB Blvd
Bike Facilities	Bike Lanes
Bike LTS	1 / 2 • Int. @ HB Blvd = 3
Ped Facilities	Most blocks have sidewalks on both sides of street however some gaps due to back-out parking • No Curb Ramps or marked crosswalks
Ped LTS	1 / 3 / 4
Transit	BCT [Route 4 @ Atlantic Shores Blvd & Route 28 @ HB Blvd] • Cloud Route 1 [Route 2 @ Atlantic Shores Blvd & Route 4 @ HB Blvd]
Planned Improvements	ADA Curb Ramps via Sidewalks (Surtax CIP Project) • HBCRA Art Trail
Notable Conditions	1-way SB roadway (pair with NE 10 Av) • Potential for cut through traffic • Speed humps do not extend into bike lane • No marked crosswalks at NE 5 St (Sunrise Park entrance) • A lot of pedestrian activity in and around Sunrise Park • Observed vehicles driving the wrong way • Sidewalk gaps • Bicycles riding on the sidewalk
Survey Monkey	Destinations - #2 Parks • Concerns - #2 Speeding or Dangerous Driving and #4 Cut Through Traffic in neighborhood
Other	Opportunity for neighborhood gateway features and traffic calming • Opportunity for quick build intersection treatments and crosswalks to park • Identify safety enhancements at HB Blvd



⑤ Atlantic Shores Blvd: US1 to Three Islands Blvd

Ownership	City • Int. @ US1 = State
TMP Vision	Better Match Surrounding Land Use • Expand Transportation Choice • Reduce car dependency to key destinations • Seamless connections to parks • Traffic Calming • Safe Crossings • Streets that are comfortable to share the road
Destinations	Big Easy Casino • Joseph Scavo Park
Safety	Injury crashes along entire roadway • KSI @ US1 & NE 14 Av • Ped / Bike Injury Crashes along entire roadway
Speed	25 MPH • 35 MPH @ US1 & Three Islands Blvd
Bike Facilities	None
Bike LTS	1 / 2 • Int. @ US1 = 3 • Int. @ Three Islands Blvd = 4
Ped Facilities	Most blocks have sidewalks on both sides of street however some gaps due to back-out parking • No Curb Ramps or marked crosswalks
Ped LTS	1 – 4 adjacent to backout parking • Int. @ US1 = 3
Transit	BCT Route 4 [Routes 1 and 101 @ US1] • Cloud Routes 1 & 2
Planned Improvements	Complete Streets Improvements identified but unfunded [applied BMPO CSLIP Cycle 9] • 2018 Mobility Roadmap Short-Term Multimodal Improvements = Bike Path • HBCRA Art Trail • Sidewalk Repairs (Surtax CIP Project)
Notable Conditions	Very wide 2-lane roadway • Recently restriped • Potential for cut through traffic • Guardhouse at entry to Three Islands Neighborhood • Redevelopment at Big Easy Casino property • Sidewalk gaps • At NE 10 Ave transit riders have to wait for the shuttle in parking spots • Back out tandem parking at Seventeenth Green Condo's
Survey Monkey	Priority Local Roadway – #1 • Destinations - #2 Parks • Concerns - #2 Speeding or Dangerous Driving and #4 Cut Through Traffic in neighborhood
Other	Opportunity for neighborhood gateway features and traffic calming • Opportunity for quick build intersection treatments, traffic calming, and bike facilities • Identify safety enhancements at US1 • FY 25 – 29 CIP includes Atlantic Shores Blvd 96 Trunk Line



⑥ Diana Dr, from Golden Isles Dr to SE 26 Av

Ownership	City
TMP Vision	Neighborhood Entry Points • Expand Transportation Choice • Reduce car dependency to key destinations • Seamless connections to parks • Traffic Calming • Safe Crossings • Streets that are comfortable to share the road
Destinations	Businesses on HB Blvd • Beach
Safety	No crashes on route
Speed	Layne Blvd = 30 MPH • Golden Isles Dr = 25 MPH • 35 MPH @ HB Blvd
Bike Facilities	None
Bike LTS	2
Ped Facilities	Some sidewalk segments in southern ROW
Ped LTS	3
Transit	Cloud Route 2 at Golden Isles Dr
Planned Improvements	FY 25 – 29 CIP includes Three Island Guard House and Traffic Calming Project • Prior CIP included Diana Dr extension west to Layne Blvd
Notable Conditions	Separated into two segments: North of Landscaped Median = 1-way (WB) Diana Dr Access Road; South of Landscaped Median = 2-way Diana Dr • On-Street parking on Diana Dr • Large areas of Back-out parking on Diana Dr • Pedestrians frequently observed walking within the landscaped median
Survey Monkey	Diana Dr = Priority Local Roadway Notes 5 times (Golden Isles noted 6 times) • Destinations - #1 Beach
Other	Residents have previously rejected two redesign concepts = Both Options A included keeping Access Rd as 1-way WB and converting Diana Dr to 1-way EB + converting intersection at SE 26 Av to roundabout. Both options included removing some private parking spaces • Opportunity for quick build improvements to determine locally preferred alternative

