

# Hallandale Beach Transportation Master Plan

Meeting with Broward County  
Potential Solutions / Dixie Highway

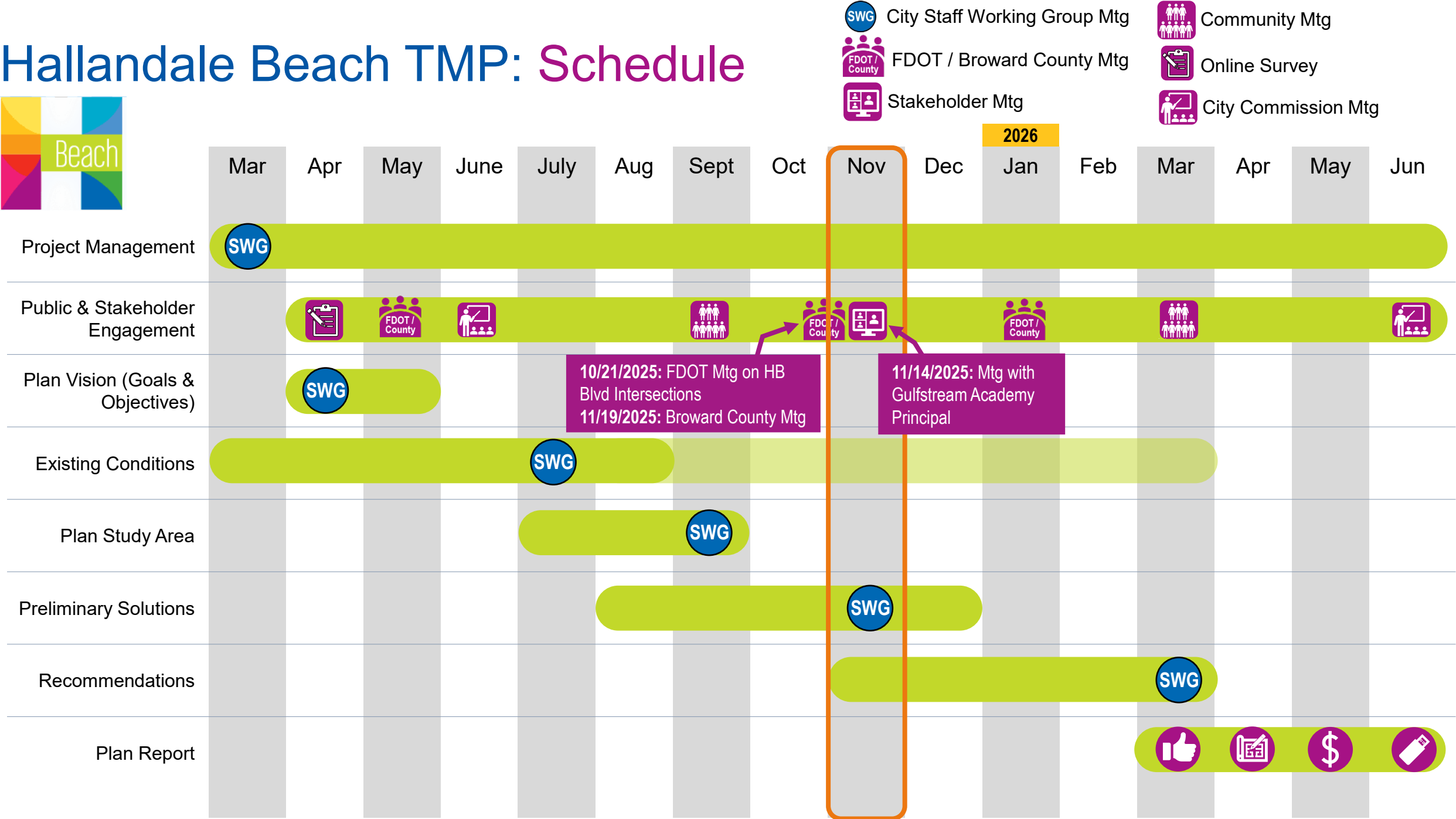
# Agenda

1. Hallandale Beach TMP: Schedule / Status
  - Plan Study Area Roadways
  - FYI – Focus on Quick Build / Near Term Projects
2. Introduction: Quick Build & Near-Term Projects
3. Discussion: Dixie Highway
  - SE 3 St
  - SE 1 Av

## Meeting Goals:

- ✓ **Discuss Status of Dixie Highway Complete Streets Project**
- ✓ **Discuss potential solutions for SE / SW 3 St @ Dixie Hwy and SE 1 Av**

# Hallandale Beach TMP: Schedule

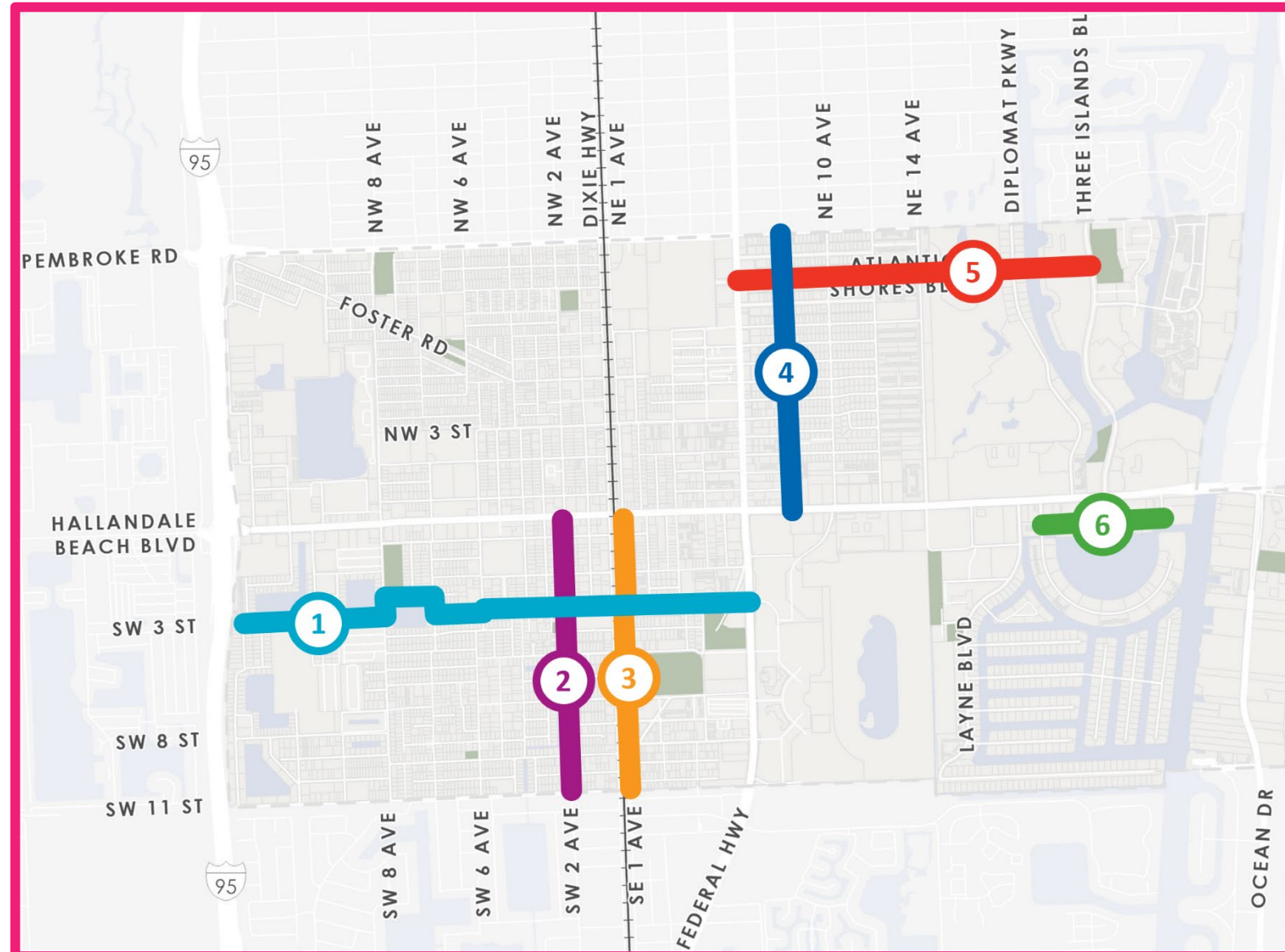




# Hallandale Beach TMP: Plan Study Area

ID	Roadway	Limits
1	SW / SE 3 St	SW 11 Av to US 1 (+ SW 2 Ct connector)
2	SW 2 Av	Hallandale Beach Blvd to Countyline Rd
3	SE 1 Av	Hallandale Beach Blvd to Countyline Rd
4	NE 8 Av	Moffett St to Hallandale Beach Blvd
5	Atlantic Shores Blvd	US1 to Three Islands Blvd
6	Diana Dr	Golden Ises Dr to SE 26 Av

Vision, Goals, & Objectives • Injury Crashes • Speed(ing) • Programmed Projects or Studies • Transit Access • Level of Traffic Stress • Access to Parks, Schools, & Grocery Stores • Existing Conditions • Survey Monkey Results • Opportunity for Quick Build or Near-Term Improvements





# Hallandale Beach TMP: Quick Build Projects

Quick build projects are built with low(er) cost materials, such as paint, signs, pavement markings, cones, bollards, delineator posts, rubberized devices, modular devices, etc...

## Quick Build benefits:

- Provide near term improvements
- Build community support
- Validate (or identify needed modifications) for planning concepts

BMPO is developing a Quick Build guide to assist municipalities in the planning and implementation of quick build projects **including** BCTED's review process and submittal requirements.

- Other helpful resources:
  - [https://nacto.org/wp-content/uploads/2016PeoplefoBikes\\_Quick-Builds-for-Better-Streets.pdf](https://nacto.org/wp-content/uploads/2016PeoplefoBikes_Quick-Builds-for-Better-Streets.pdf)
  - <https://metroplanorlando.gov/wp-content/uploads/Quickbuild-Guide.pdf>

Roundabout



Roundabout



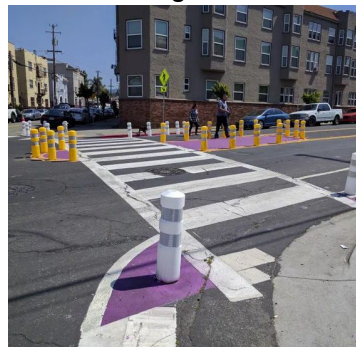
Center Lane Median + Mid-Block Crosswalk



Raised Mid-Block Crosswalk



Median Refuge



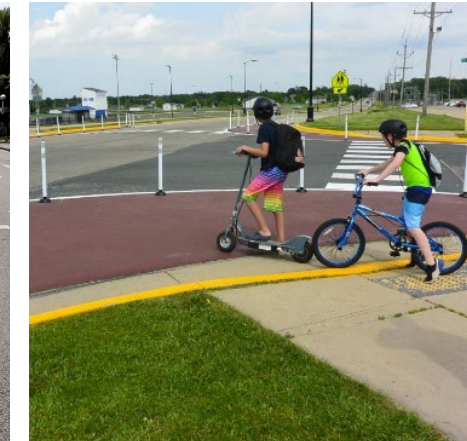
Lane Repurposing to Bike Lane



Protected Bike Lane



Curb Extension





# Hallandale Beach TMP: Near Term Projects

Similar to Quick Build, Near term projects are lower cost facilities but are built with more durable materials and **are intended to be permanent.**

- They do not require ROW acquisition nor impact utilities. They typically do not require studies and are lower cost.
- They are intended to address an existing accessibility, safety, or mobility issue at a specific location, versus improving an entire corridor.

Curb Ramps, Detectable Warnings, Crosswalks



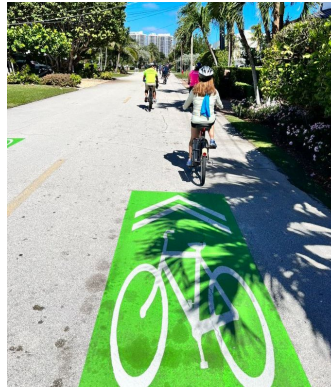
Median Caps + High Visibility Pavement Markings



Rapid Rectangular Flashing Beacons (RRFBs)



Sharrows



Pedestrian Signals



Fill In Sidewalk Gaps



Lane Hardening





# More Examples....

Raised Crosswalk with RRFB



Illuminated Crosswalk with RRFB



Curb Extension with Flex Posts



LPI = Leading Pedestrian Interval



Lane Hardening with Flex Posts



Directional Curb Ramps



Traffic Diverter



Traffic Diverter



Shared Use Path



Contraflow Bike Lane (+ Sharrows)



Modular Speed Humps





# Hallandale Beach TMP: Plan Study Area

SW / SE 3 St

1

# SW / SE 3 St

About the Corridor

Ingalls Park

Gulfstream Early Learning



Artec Academy Preschool



Commercial/  
Retail or Services  
near SW 3<sup>rd</sup> St

Gulfstream Park



## Gulfstream Academy



## Family and Civic Corridor

- Most of the land use is residential, but there are a number neighborhood focused destinations. The SW/SE 3 St corridor is anchored by Hallandale Beach City Hall and Community Center on the east side, Gulfstream Academy (K-8) on the west side, and Ingalls Park northeast of where SW 8 Ave intersects the corridor.
- Provides through connection to Gulfstream Park on the northern end.
- **One of only 5 FEC RR crossings in the City.**



## City Hall

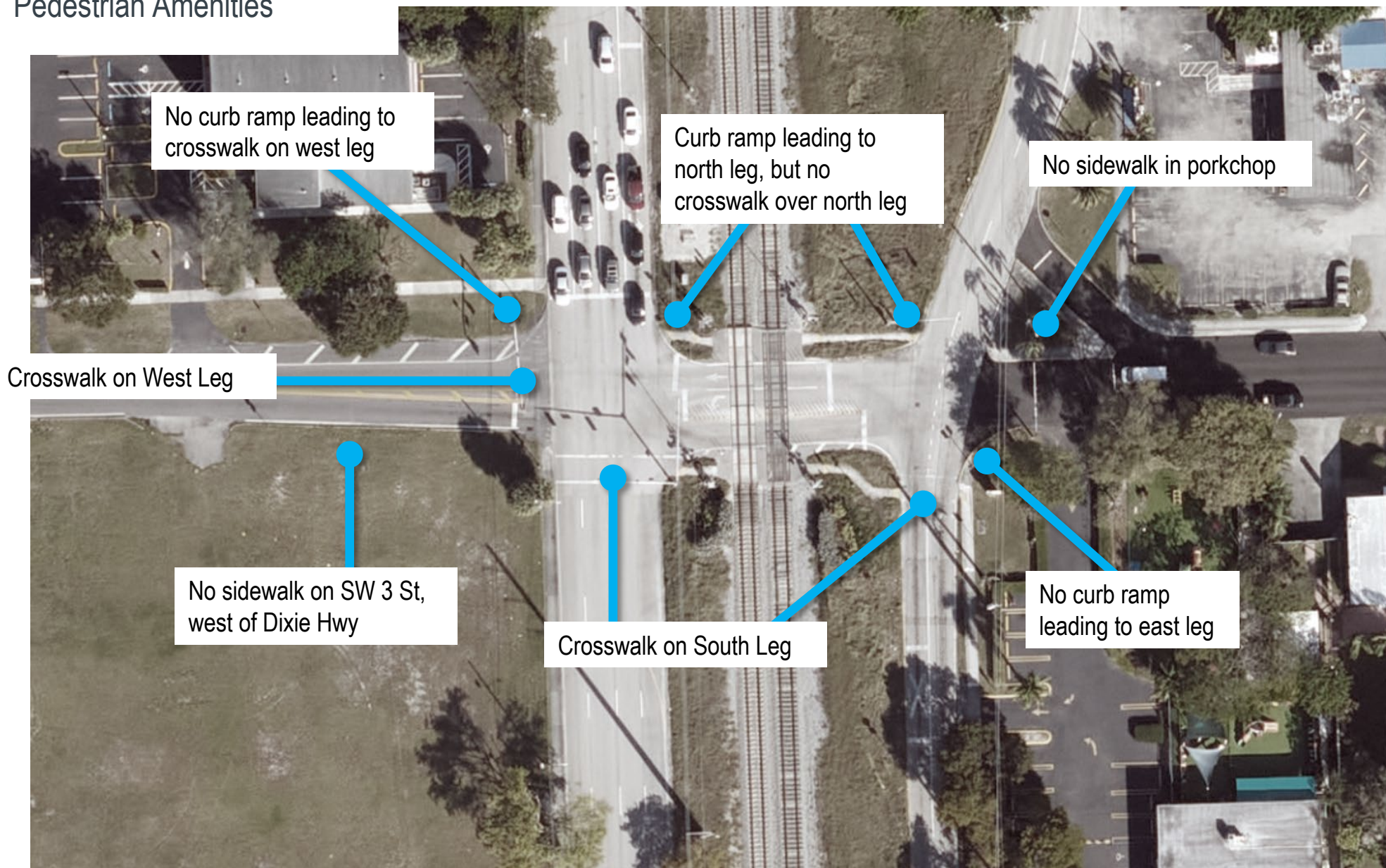


Library and Cultural Center co-located



# 1 Dixie Hwy @ SW / SE 3 St

## Pedestrian Amenities





# 1 Dixie Hwy @ SW / SE 3 St

## Field Observations

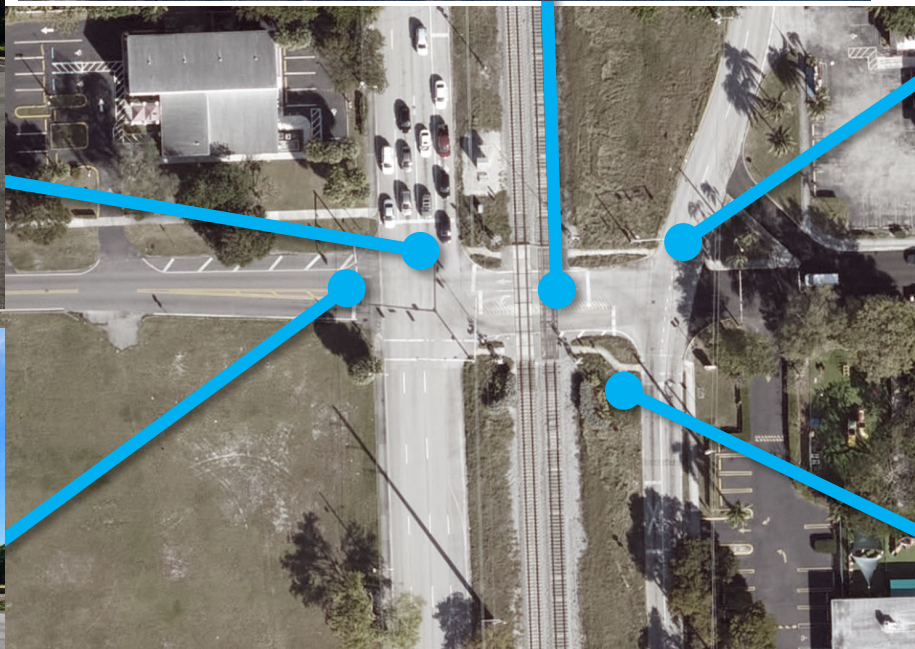
(View from NW corner) Bicyclist rides in roadway, to make EB to NB LT; Sidewalk on north side of FEC RR leads to a curb ramp but no marked crosswalk over north leg



(View from SW corner) No marked crosswalk over west leg; No sidewalk in SW corner



(View from SE corner) Community Shuttle crossing over FEC RR



(View from SE corner) No curb ramp to cross the east leg; despite pedestrian signal, no crosswalk over north leg



(View from SE corner) Pedestrian walks over FEC RR; Faded crosswalk over south leg on SE 3 St





1

## SW / SE 3 St

## Existing Conditions

Traffic Control



Signal Without Crosswalks



Signal With Crosswalks



All-way Stop Without Crosswalks



Two-way Stop With Crosswalks



Two-way Stop Without Crosswalks

Back out parking

No Sidewalk

Speed Hump

Bus Stops

Within 250' of Traffic Controlled Crossing

Not within 250' of Traffic Controlled Crossing

Distances between Marked Crossings

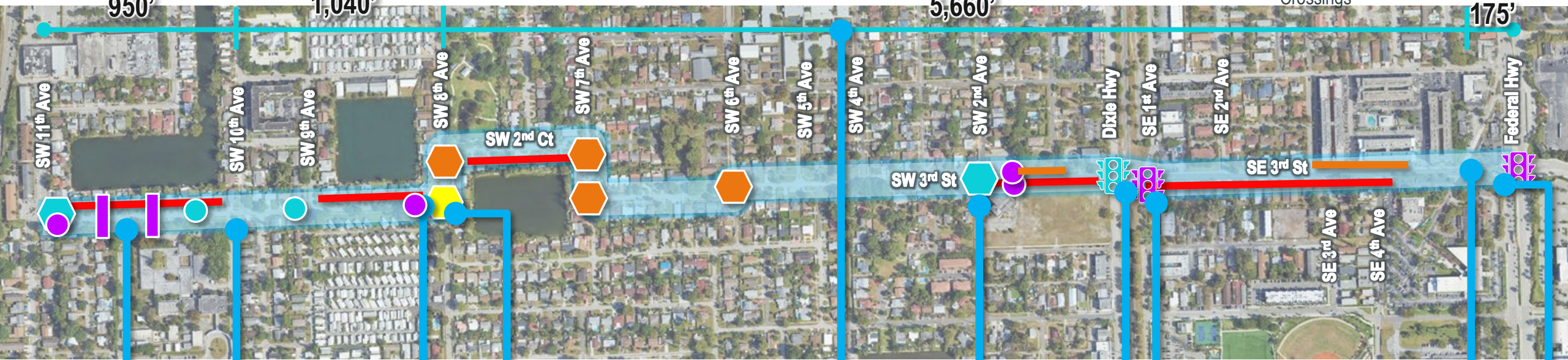


950'

1,040'

5,660'

175'



SW 2nd Ct

SW 3rd St

SE 3rd St

SE 3rd Ave

SE 4th Ave

Federal Hwy

Parents drop off and pick up children from school directly along SW 3 St

Fatal crash involving pedestrian struck crossing SW 3rd St

School access point and faded, uncontrolled, marked pedestrian crossing

Stop control only for SW 3rd St. Crosswalk markings are very faded



Over 1 mile between Very wide intersection marked crossings across SW 3rd St

Crossing only across SE 1 Av; angled intersection with channelized turn lane

Serious injury crash involving dirt bike driving through lowered RR gates and struck by Brightline

Skewed intersection; marked, uncontrolled pedestrian crossing across SE 3rd St

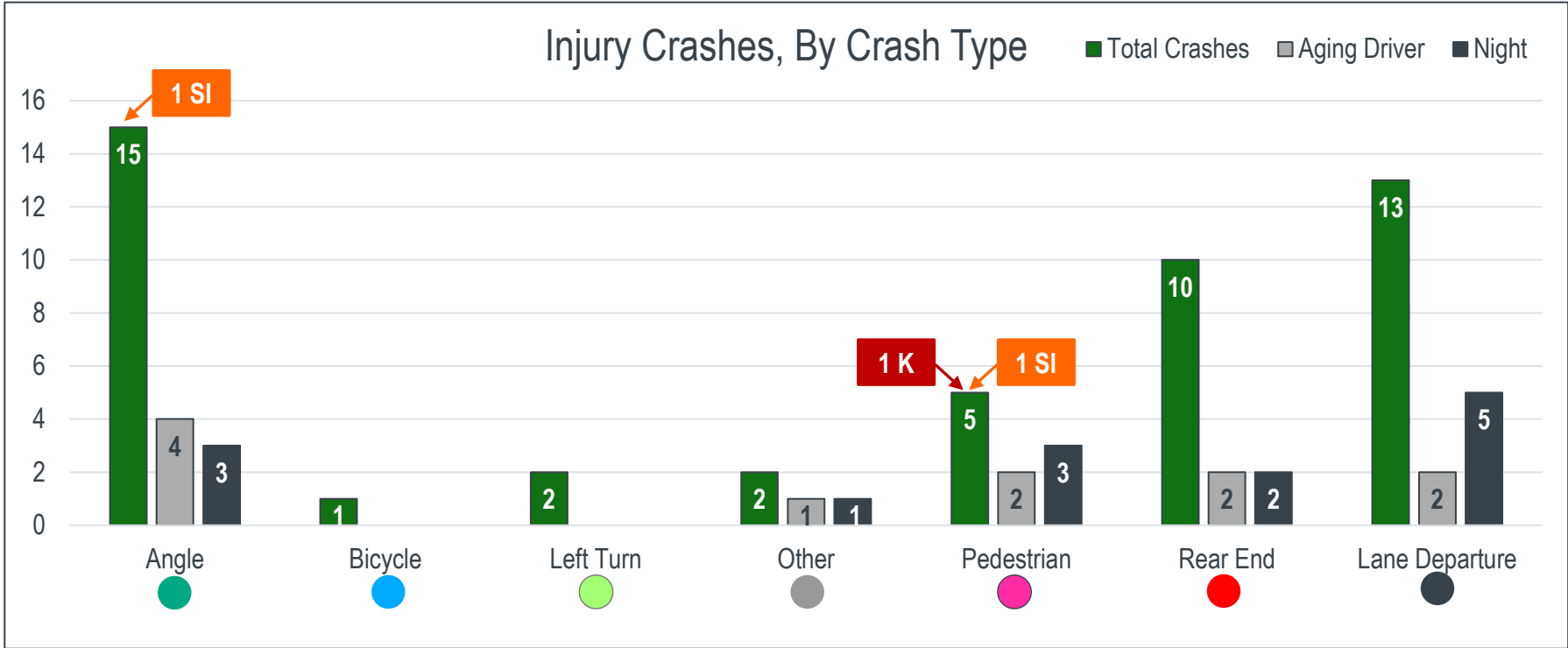
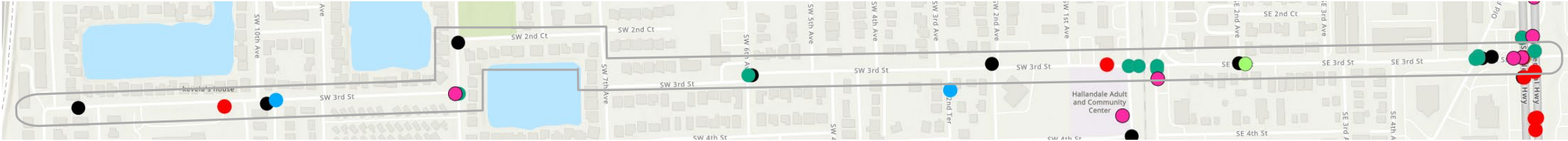
Serious injury crash involving pedestrian struck while crossing SE 3 St in the crosswalk

## Other General Issues

- Pavement markings including crosswalks and stops bars are faded throughout the corridor
- Wide turning radii
- No bike facilities
- Limited north-south crossing opportunities

# SW / SE 3 St: 5-Year Injury Crashes

2020 - 2024  
■ 49 Injury Crashes ■ 3 KSI

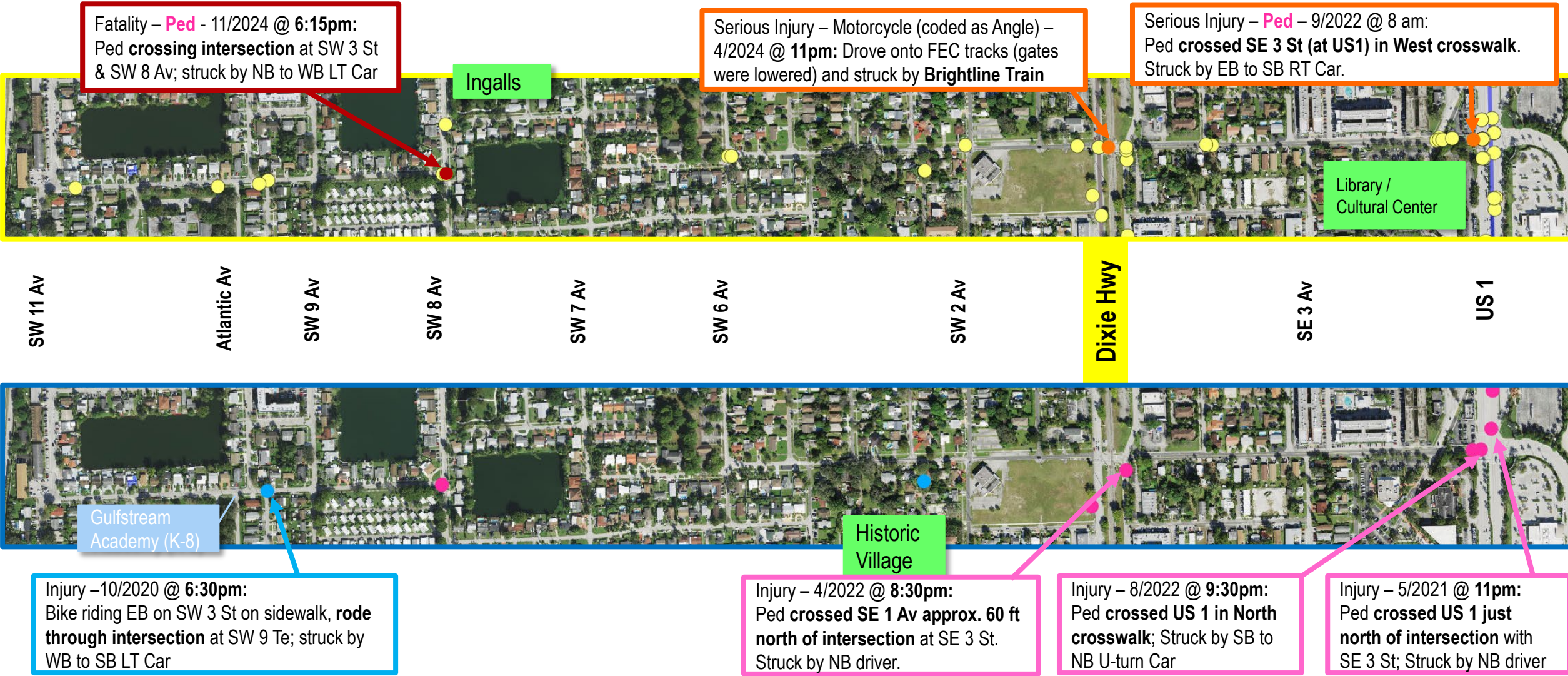


- Angle crash clusters at Dixie Hwy to SE 1 Av, and Old Federal Hwy to HB Blvd
- **13 Lane Departure Crashes.** Lane Departure Crashes are those that involve a driver leaving the bounds of their lane including Off Road, Rollover, Sideswipe, and Single Vehicle
  - All occurred on roadway, excluding US1
  - **More than 1/3 occurred at Night**
- 11 Crashes involved Aging Drivers
- 3 out of 5 Pedestrian crashes occurred at night
- 2 of the KSI crashes involved Pedestrians



# SW / SE 3 St: 5-Year Injury Crashes

2020 - 2024  
■ 49 Injury Crashes ■ 3 KSI





# 1 SW / SE 3 St: Potential Solutions

Existing Conditions

● Bus Stops

▬ Speed Hump



Challenge for SW / SE 3 St: Address access to Gulfstream Academy, Slow Down Drivers, Increase Crossing Locations



Curb Extensions



Paint Sharrows



Move Bus Stop



Quick Build Roundabout

- Using pavement markings and flex posts
- **Includes marked crosswalks**



Realign Intersection

- See next slide for recommendations on this specific intersection



New Sidewalk



Add Hardened Centerlines



Improvements in front of school

- Define parking spaces, widen sidewalk, add crossing guard, **restrict left turns out**



Speed Humps



Raised Midblock Crosswalk with RRFB

- Requires construction of sidewalk



Intersection Improvements

- **Add crosswalks**
- Curb Extensions to slow turning vehicles
- Repaint faded pavement markings



County owned intersection; treatments to be coordinated with County



Add Curb Ramps for sidewalks North/South

## Corridor Wide Strategies

Add crosswalks to facilitate pedestrian crossings across all side streets

# Hallandale Beach TMP: Plan Study Area

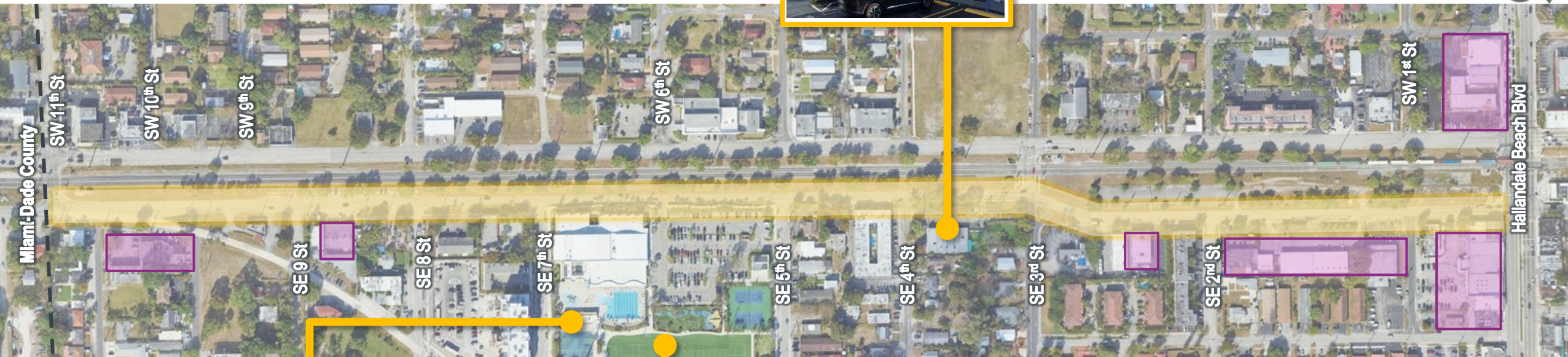
SE 1 Av



3

## SE 1 Av

About the Corridor

Artec Academy Child  
Care CenterCommercial/Retail or Services  
Accessible or Near SE 1<sup>st</sup> Ave

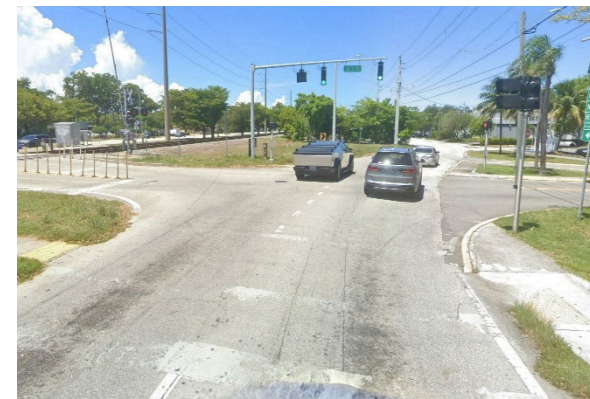
YMCA



Peter Bluesten Park

Serving Local and Through  
Traffic

- One way NB for a majority of the corridor.
- Forms the NB half of the one-way pair with Dixie Highway through Hallandale Beach.
- Road provides regional connectivity but also has multiple local community resources including the Hallandale Beach YMCA and Peter Bluesten Park present immediately along the corridor.





3

# SE 1 Av

Field Observations

(Old Federal Hwy) Pedestrian crossing roadway; No crosswalks or sidewalks



(SE 11 St) Pedestrian walks over RR tracks; No crosswalks at intersection



(SE 9 St) Riding scooter in roadway; SB Lane ends; RT onto SE 9 St is prohibited; No sidewalk in east (or west) ROW



(SE 7 St) Wide sidewalk in front of Park



(SE 3 St) Bicyclist waiting at intersection; No bike lane in roadway



3

## SE 1 Av

Existing Conditions

Traffic Control



Signal With Crosswalks



Signal Without Crosswalks



No Sidewalk

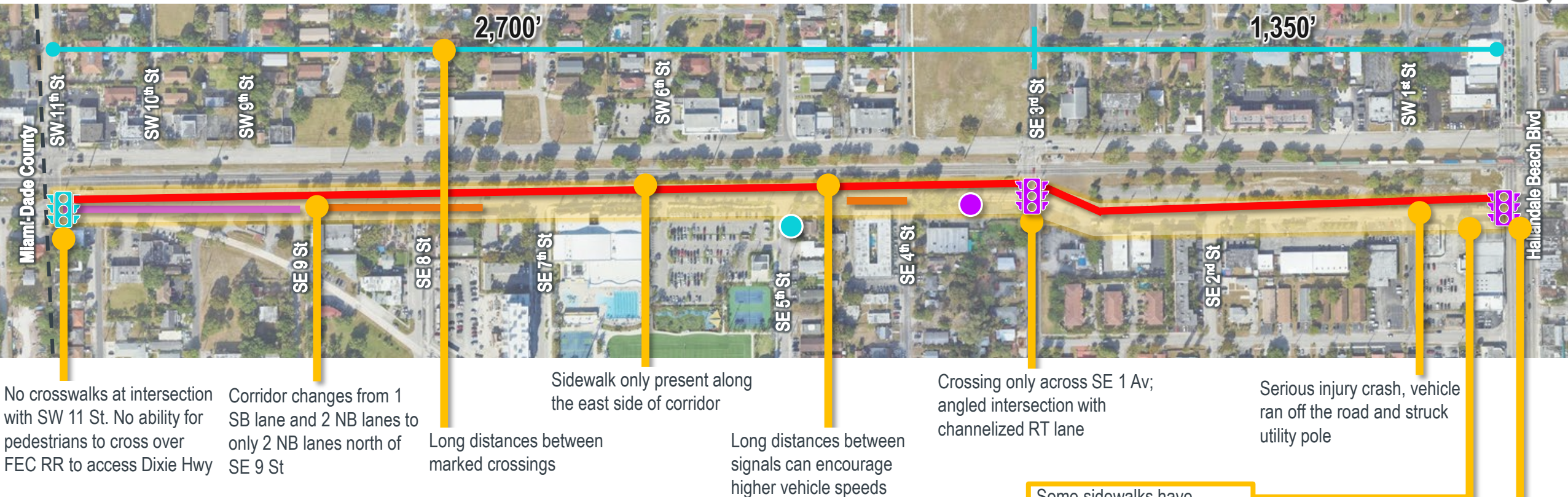


Two-Way Traffic



Back out parking

Bus Stops

Within 250' of Traffic  
Controlled CrossingNot within 250' of Traffic  
Controlled Crossing

## Other General Issues

- No bike facilities
- Observed both NB and SB bicycle activity
- Back-out parking abutting sidewalks
- No crosswalks over side streets
- Missing curb ramps
- Rail line runs along entire west side of corridor
- Limited access across rail line

Some sidewalks have obstructions



Vehicles sometimes block the intersection and crossing



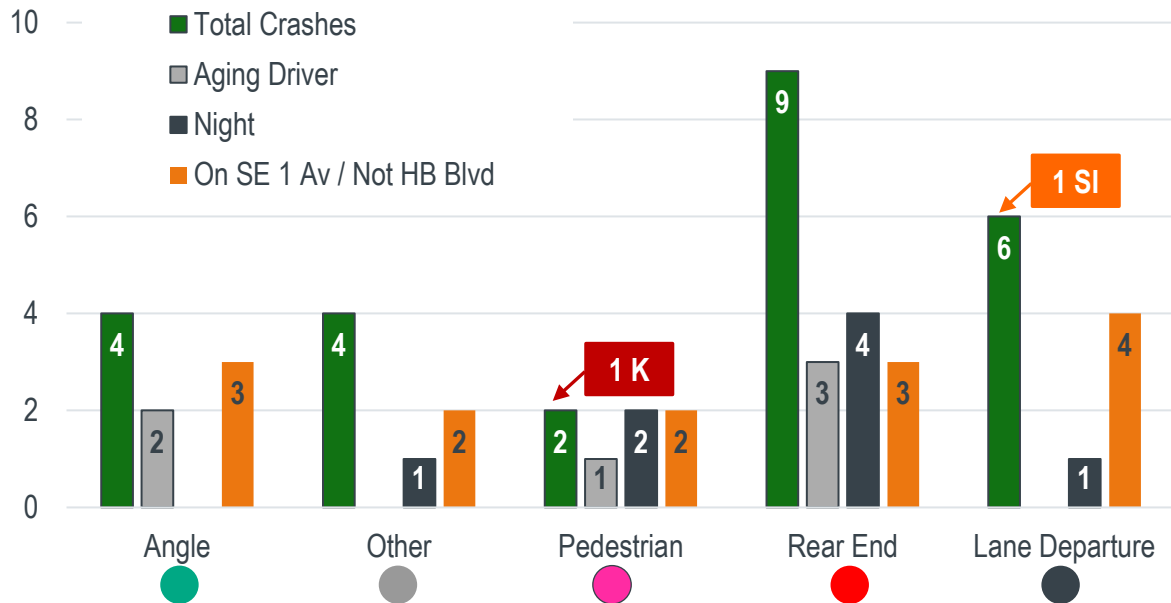


# SE 1 Av: 5-Year Injury Crashes

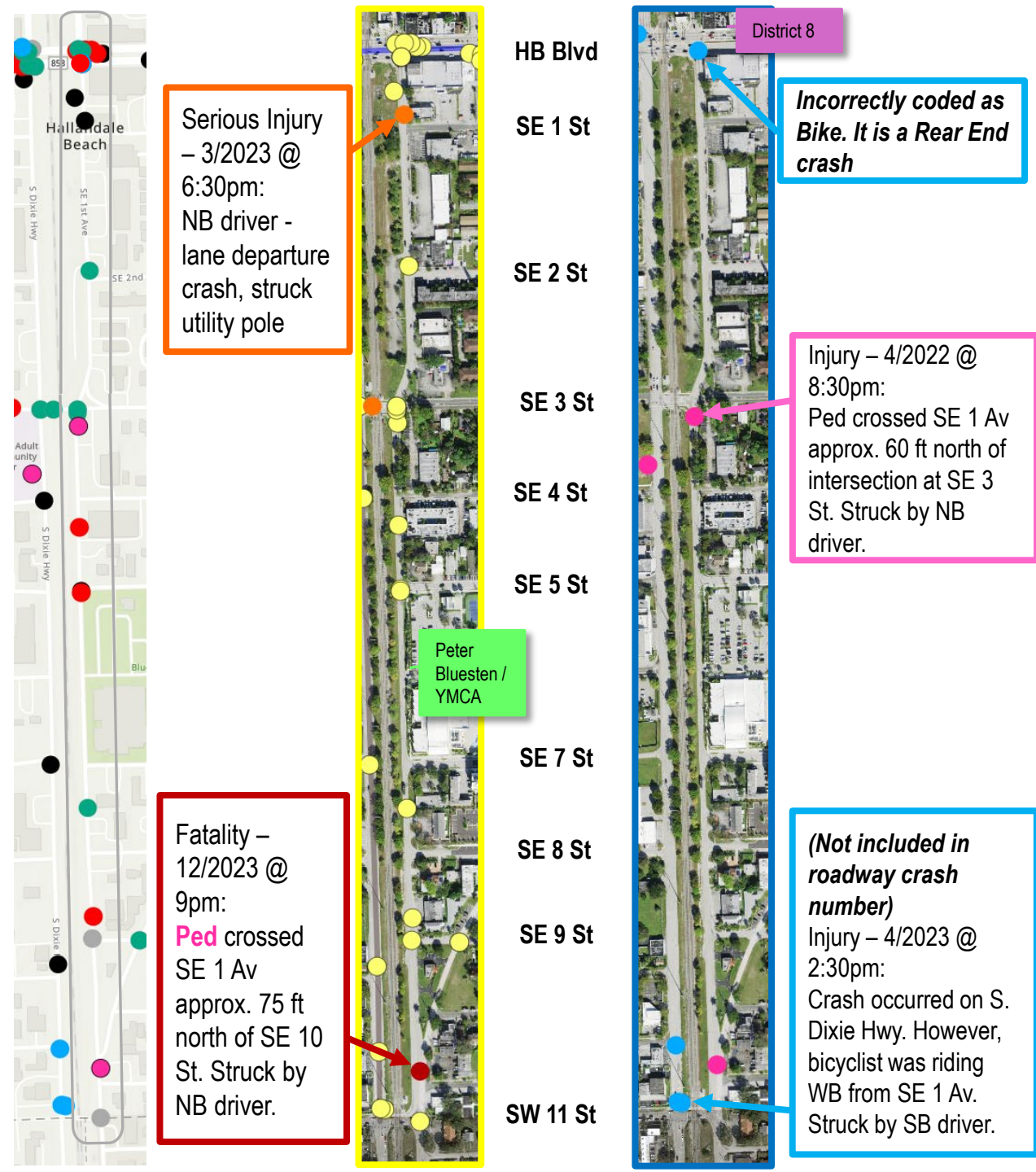
2020 - 2024

■ 25 Injury Crashes ■ 2 KSI

Injury Crashes, By Crash Type



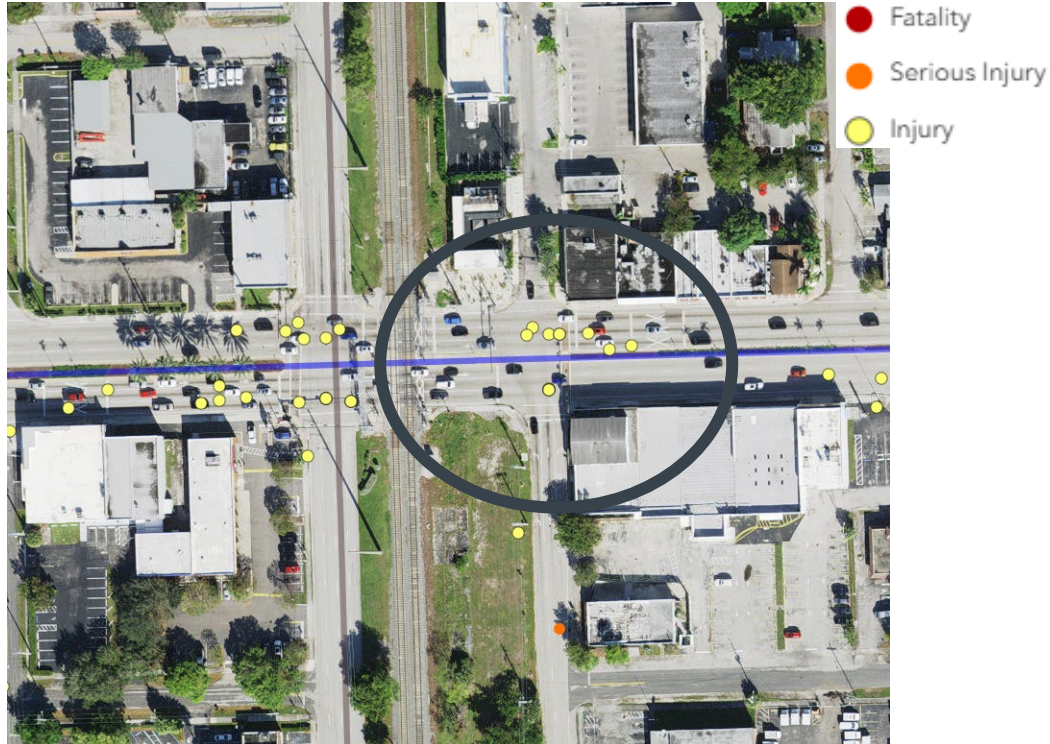
- 14 Crashes occurred on roadway excluding HB Blvd (see HB Blvd detailed slide)
- 2 KSI occurred on SE 1 Av
- 2 Pedestrian occurred on SE 1 Av
- 5 (out of 14) Crashes occurred at Night = Other (1), Pedestrian (2), Rear End (2)





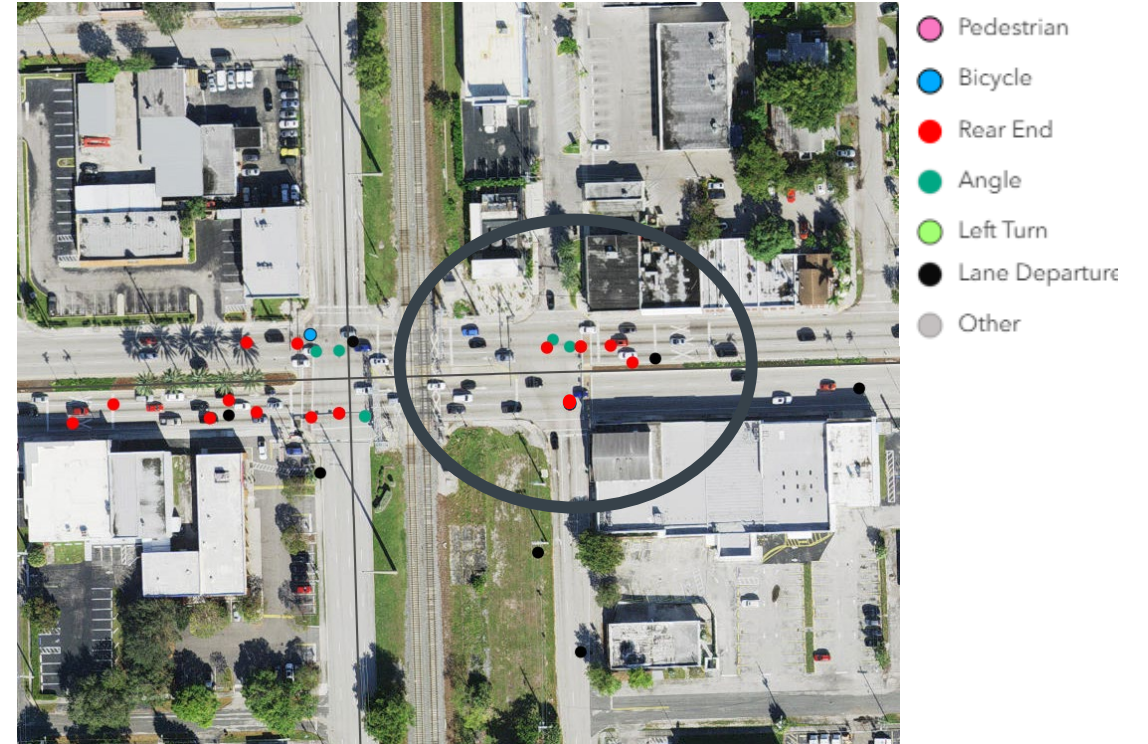
# SE 1 Av: Intersection at HB Blvd / 5-Year Injury Crashes

5-Year Injury Crashes (2020 – 2024); By Severity



- 11 Injury Crashes
- 1 crash on **Wet Road**
- 3 crashes involved **Aging Drivers**
  - All were Rear End during daytime ●
- 3 crashes at **Night**

5-Year Injury Crashes (2020 – 2024); By Crash Type



- 2 Angle
- 6 Rear End (54%)
  - All Rear End were travelling WB on Hallandale Beach Blvd; 2 involved train tracks guard gates coming down
- 3 Lane Departure



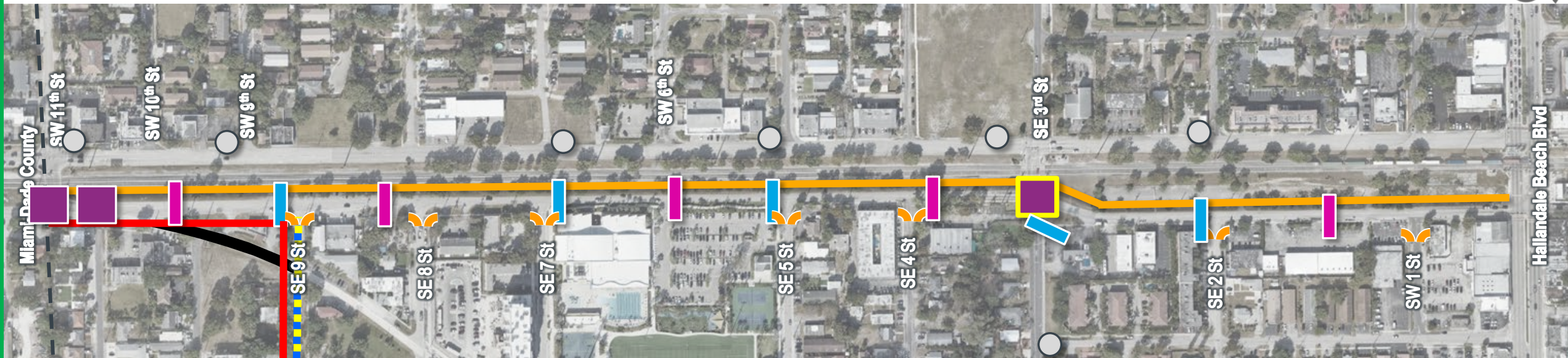
3

# SE 1 Av: Potential Solutions Option 1 Shared Use Path

Existing Conditions

 Bus Stops

Challenge for SE 1 Av: Provide Bicycle (and Scooter) facilities for BOTH NB and SB movements



## Curb Extensions

- Slows down turning vehicles
- Add crosswalks if they are missing



## Make SE 9 St a 2-way roadway



## Close Street Access

- Old Federal Hwy, south of SE 9 St
- Additional space could be kept for access to adjacent parcels or transformed to community space



## Shared Use Path

- Located in western ROW / Swale
- South of SE 3 St: FEC-owned
- North of SE 3 St: City-owned ROW (14 ft width)
- Would allow for NB and SB bicycle activity, plus pedestrians



## New Sidewalk



## Raised Crosswalk with RRFB



## Speed Humps



## Intersection Improvements

- Add crosswalks
- Curb Extensions
- Repaint faded pavement markings



## SE 3 St Intersection

- Leading pedestrian interval
- Add crosswalks
- Add Curb Ramps for sidewalks North/South

## Corridor Wide Strategies

- Upgrade Existing Crosswalks to Special Emphasis
- Add curb extensions on side street connections



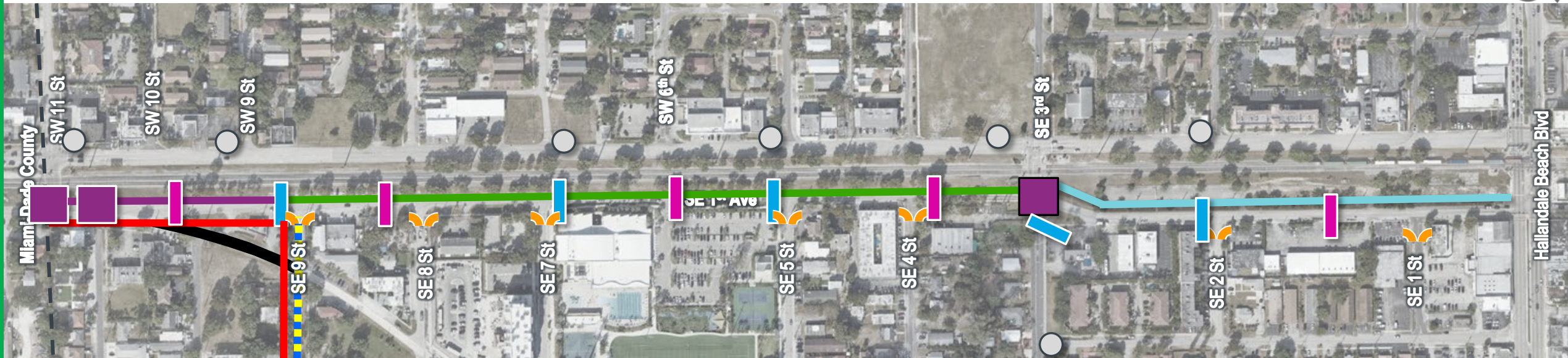
3

# SE 1 Av: Potential Solutions Option 2 Lane Repurposing + Bike Lanes

Existing Conditions

 Bus Stops

Challenge for SE 1 Av: Provide Bicycle (and Scooter) facilities for BOTH NB and SB movements



## Curb Extensions

- Slows down turning vehicles
- Add crosswalks if they are missing



## Make SE 9 St a 2-way roadway

## Close Street Access

- Old Federal Hwy, south of SE 9 St
- Additional space could be kept for access to adjacent parcels or converted to bike lanes



## New Sidewalk



## Raised Crosswalk with RRFB



## Speed Humps



## Paint Directional Bike Lanes

- SW 11 St to SE 9 St, where roadway is 2-way



## Consider Lane Repurposing

- SE 9 St to SE 3 St
- Reduce from 2 NB to 1 NB Lane
- Convert Left Lane to Separated Contraflow Bike Lane (SB bike lanes)
- Paint NB Sharrows in Travel Lane



## Two-Way Separated Bikeway

- SE 3 St to HB Blvd
- Build in existing grassy area



## Intersection Improvements

- Add crosswalks
- Curb Extensions
- Repaint faded pavement markings



## SE 3 St Intersection

- Leading pedestrian interval
- Add crosswalks
- Add Curb Ramps for sidewalks North/South
- *Bike signal protected intersection*

## Corridor Wide Strategies

Upgrade Existing Crosswalks to Special Emphasis

Add curb extensions on side street connections



3

# SE 1 Av: Potential Solutions @ SW 11 St

## Challenges and Opportunities

0

### Pedestrian Crossing Infrastructure - Opportunities

- North / South Crosswalks may be painted on the east side of Dixie Hwy and west side of SE 10 St *if sidewalks and curb ramps are constructed*

0

### Pedestrian Crossing Infrastructure - Challenges

- There is no sidewalk crossing the rail tracks, and therefore a pedestrian crosswalk cannot be built as there is no receiving ADA accessible facility

### Clean up the Intersection

- Close leg of Old Federal Hwy to clean up travel movements or T up intersection to slow vehicles
- Consider painting directional bike lanes on SE 1 Av by restriping travel lanes

