



# Transportation Master Plan

# Agenda

1. Current Status (3 minutes)
2. Vision Discussion
  - What we heard (5 minutes)
  - Recommended Guiding Principles (15 minutes)
  - Potential Vision Statement (5 minutes)
  - Consensus Discussion (45 minutes)
3. Next Steps / Action Items (15 minutes)

Also attached:

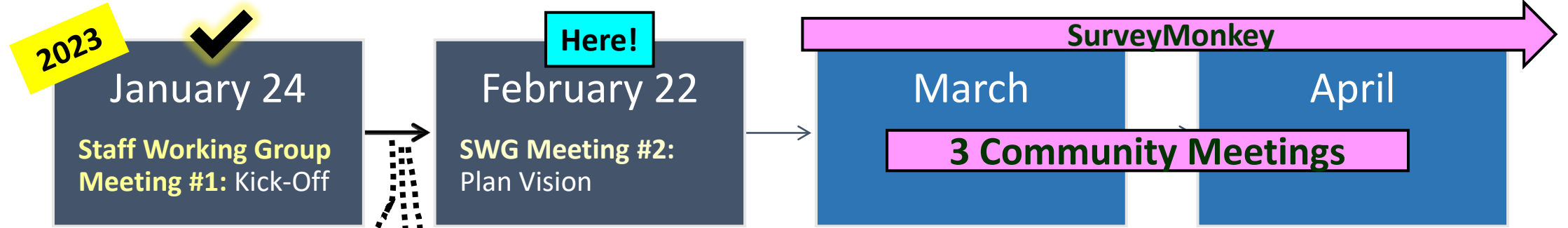
- Follow up questions re recent planning efforts
- Highlights from SurveyMonkey responses

## Meeting Goal:

- ✓ Consensus on Plan Vision
- ✓ Discuss Community Meetings
- ✓ Confirm Action Items



# Project Schedule: Current Status



## 1-on-1 with Elected Officials

- Feb 14: Comm. Rolli, Vice Mayor Bracchi, Comm. Caputo
- Feb 15: Mayor Newton
- Feb 16: Comm. D'Arminio

## Data Collection

- Ongoing...
- Need GIS Shape Files
- Need current status on specific recent planning efforts

## SurveyMonkey

- Survey approved by City Staff
- Survey promoted in "Commission Recap" on 2/15/2023
- Anticipated to stay "live" until May 1<sup>st</sup>
- 63 responses as of 2/17/2023

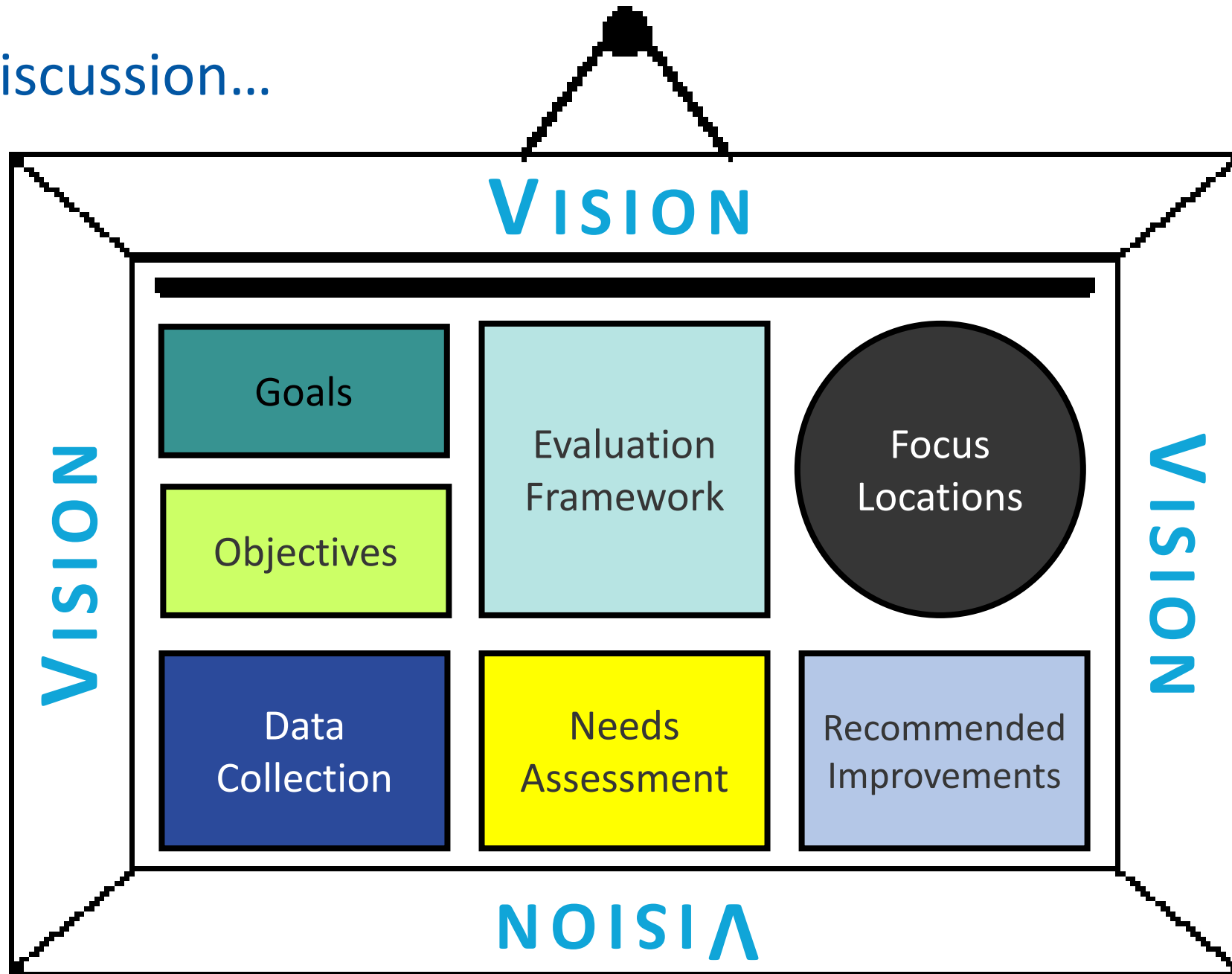
The City of Wilton Manors  
**TRANSPORTATION  
MASTER PLAN**

Share **YOUR** Comments

[www.surveymonkey.com/r/WM\\_Transportation](http://www.surveymonkey.com/r/WM_Transportation)

A row of icons representing different transportation modes: a person walking, a person on a bicycle, a person in a wheelchair, and a person with a clipboard. This row is repeated twice.

# Vision Discussion...



# Vision Discussion: What we heard @ SWG Kick-Off Meeting

Identify improvements needed <i>adjacent to redevelopment</i> parcels / developer “asks”	Focus on locations with <i>less constraints</i>	Identify solutions with <i>no / minimal impact to SF properties</i>
Identify both <i>quick fixes</i> (active site plans) and <i>long-term improvements</i>	Identify <i>low-stress</i> ped / bike routes	Identify <i>alternate bike routes</i> in order to maintain auto-oriented roadways.
Engineering solutions to <i>decrease reliance on police resources</i> : Reduce speeding & Reduce Jaywalking	Need to prevent jay walking / <i>improve pedestrian behavior</i>	A lot of discussion about <i>walkers / walkability</i> (vs bicyclists)
They are OK with Roundabouts (but prior engineering guidance was insufficient ROW)	Ped / bike facilities should be in <i>convenient</i> locations	<i>Employees</i> are encouraged to walk / bike to work one day a week

# Vision Discussion: What We Heard @ 1-on-1 Listening Sessions

## Redevelopment Areas

- Andrews Avenue
- NE 26<sup>th</sup> Street
- Dixie Highway / 5-Points

## Walkability

- Comfortable
- Need sidewalks in appropriate places

## Raised Crosswalks

- Supports raised crosswalks

## Roundabouts

- Supports roundabouts

## Bike Facilities

- Supports protected bike lanes

## Speed Reduction

- Supports speed reduction

## Speed Enforcement

- Supports increased speed enforcement

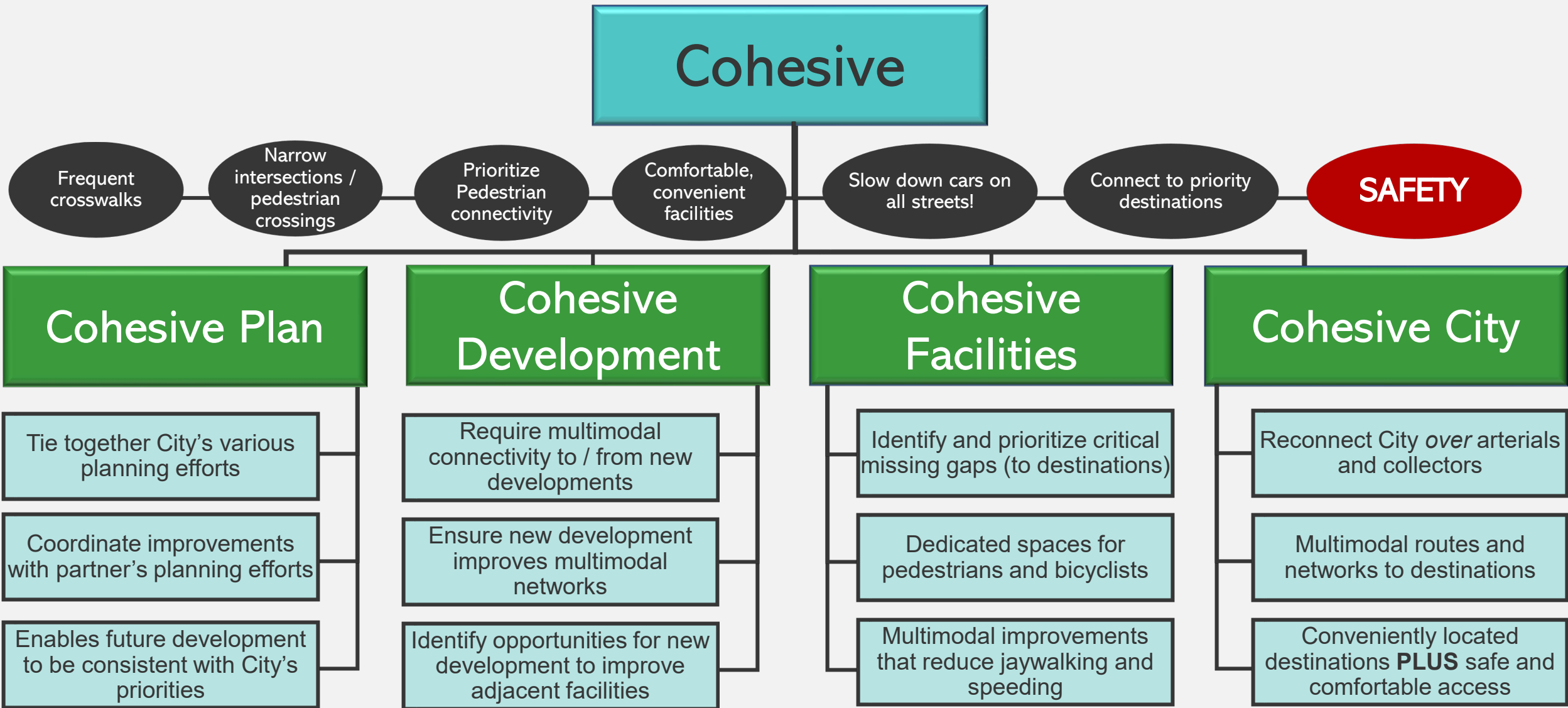
## Guiding Principles

- Supports guiding principles

## Vision Statement

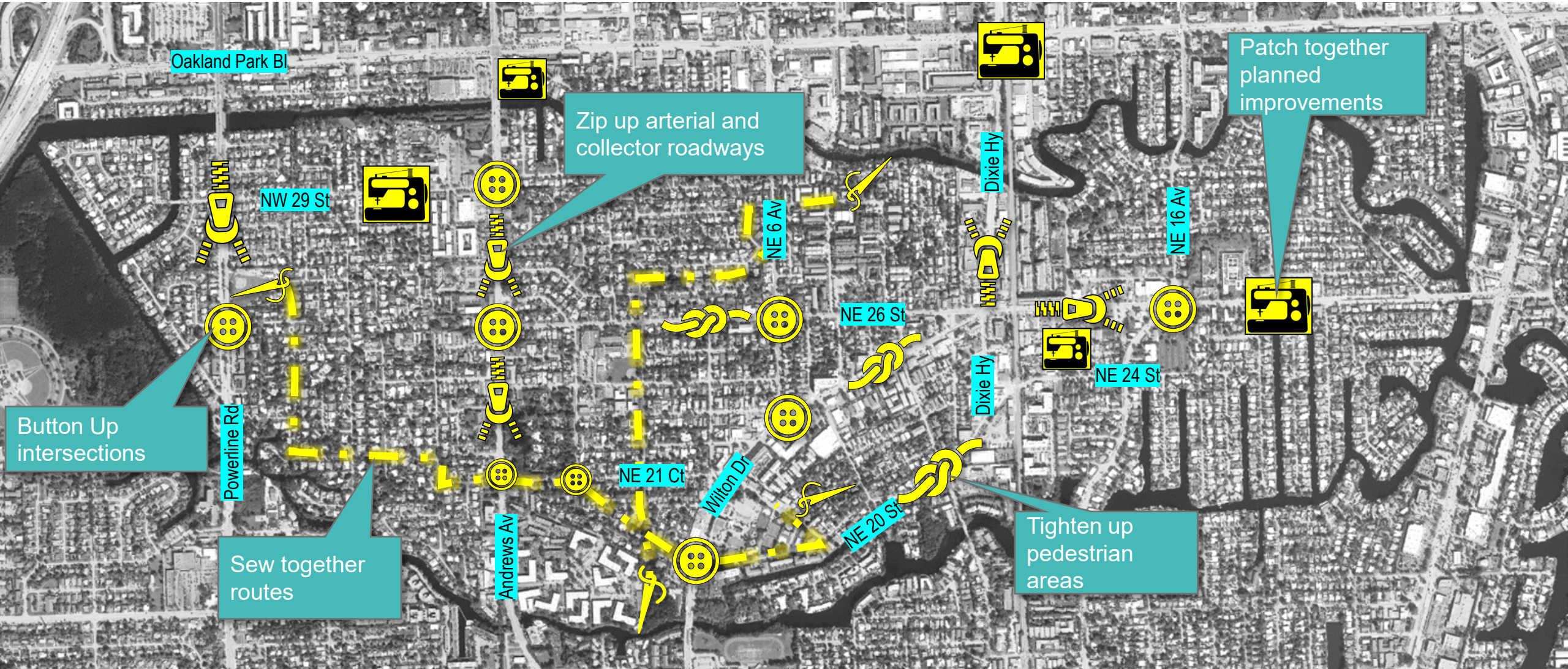
- Supports Vision Statement

# Vision Discussion: Recommended Guiding Principle #1



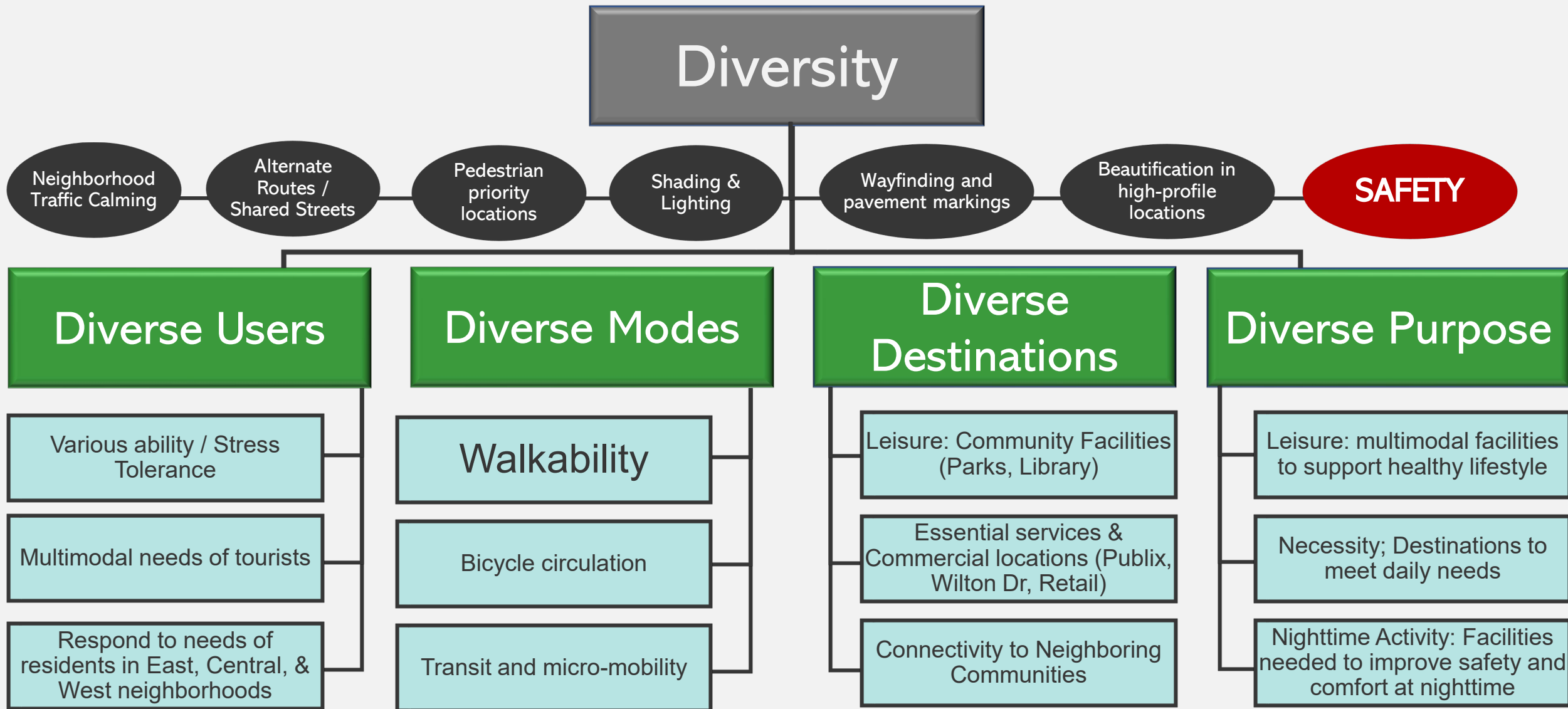
# Vision Discussion:

# Cohesive



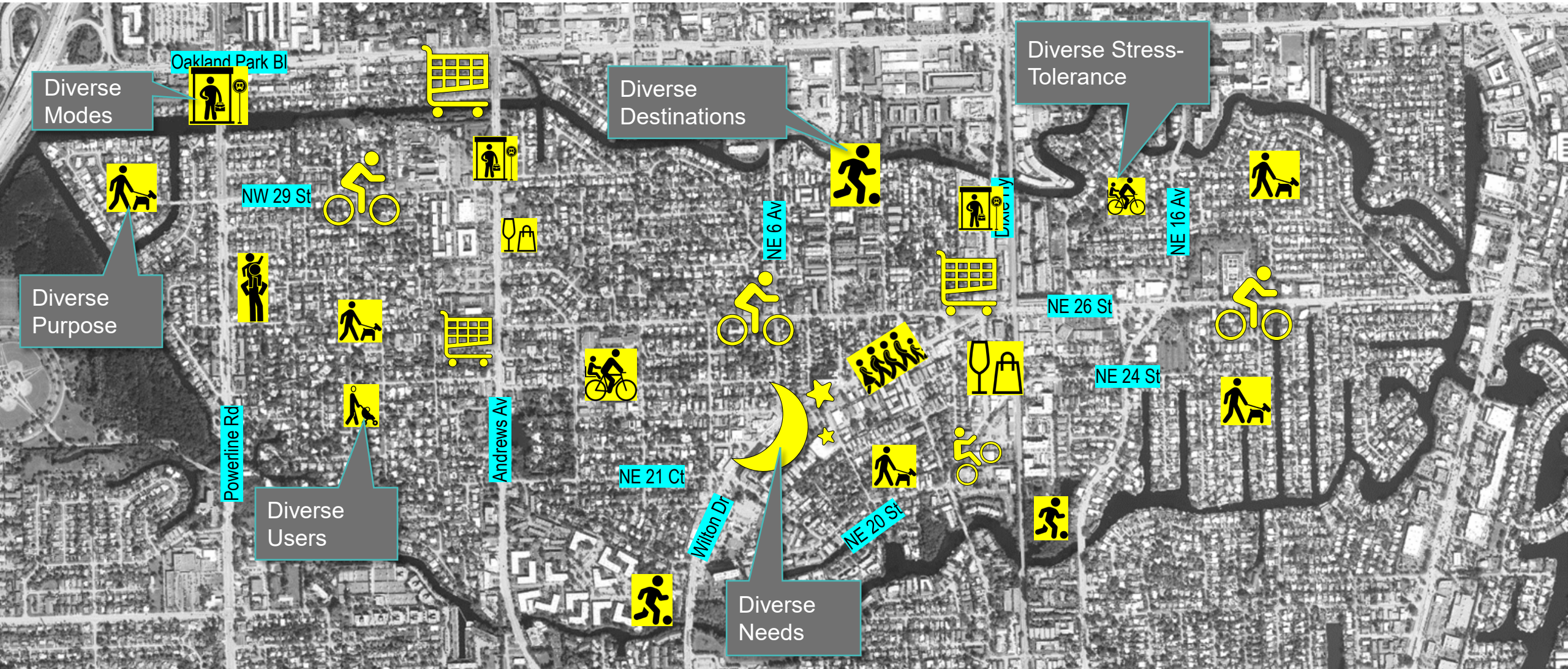


# Vision Discussion: Recommended Guiding Principle #2



# Vision Discussion

# Diversity



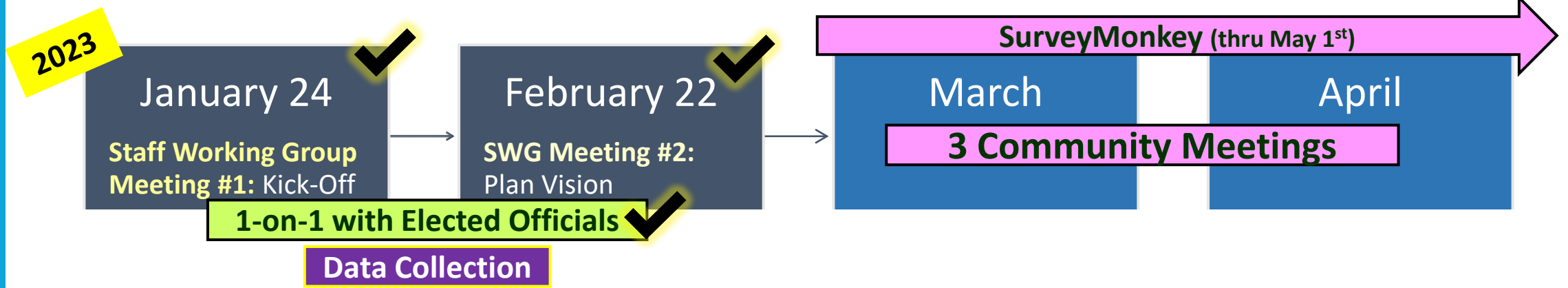
# Potential Vision Statement

The Vision of the City of Wilton Manors Transportation Plan is to develop multimodal facilities that create a **cohesive** community and address the **diverse** needs of residents, visitors, and business owners. The Plan's recommended improvements are intended to improve safety, walkability, quality of life, and economic development through the provision of safe, comfortable, and convenient walking and biking networks. Further, specific consideration is given to facilities needed for both daytime and nighttime usage.

# Consensus Discussion

- ✓ Do you agree with the recommended Guiding Principles?
  - ✓ Cohesive?
  - ✓ Diversity?
- ✓ If not, what Guiding Principles do you think should be considered?
- ✓ Do you want an additional Guiding Principle?

# Project Schedule: Next Steps



1. Confirm dates, times, locations for Community Meetings City
2. Prepare for Community Meetings MPO
3. Schedule SWG Meetings (May and July) City
4. Update project schedule as more dates are provided by the City MPO
5. Continue data collection City
6. Modify Plan Vision (if applicable) MPO
7. Develop Goals, Objectives, and Evaluation Criteria MPO
8. Continue to promote / distribute Survey Monkey City



# Transportation Master Plan

# Recent Plans - Questions:

## 1. City of Wilton Manors TOD Master Plan (Sept 2019)

- In this Plan are conceptual renderings, proposed streetscapes for several roads (5-Points p. 46, NE 6<sup>th</sup> St p. 70, NE 24<sup>th</sup> St p. 70, NE 26<sup>th</sup> St p. 71, and N. Dixie Hy p. 72)
- ? [What is the status of this proposed improvements?](#)

## 2. Westside Neighborhood Traffic Calming Study (June 2022)

- This plan recommends four Traffic Calming Techniques (Speed tables, Raised Intersections, Textured Pavement, and Neighborhood gateway Feature)
- The City's Traffic Calming Management Manual lists many more techniques (over 13 pages).
- ? [Why does the Westside Plan only recommend four Traffic Calming Techniques?](#)
- ? [What is the status of this proposed improvements?](#)

## 3. Oakland Park Train Station / First Last Mile Plan

- The Plan includes a Sidewalk GAP Map with numerous sidewalks listed as "Potential Future Sidewalks"
- ? [Is there a map of all future sidewalks?](#)

## 4. Trafficways Amendment for Andrews Ave

- ✓ [Please submit a copy of the application and / or latest documents](#)

## 5. NE 26<sup>th</sup> Street, Transportation Surtax Project (WILT-003)

- ✓ [Please submit a copy of the latest documents](#)

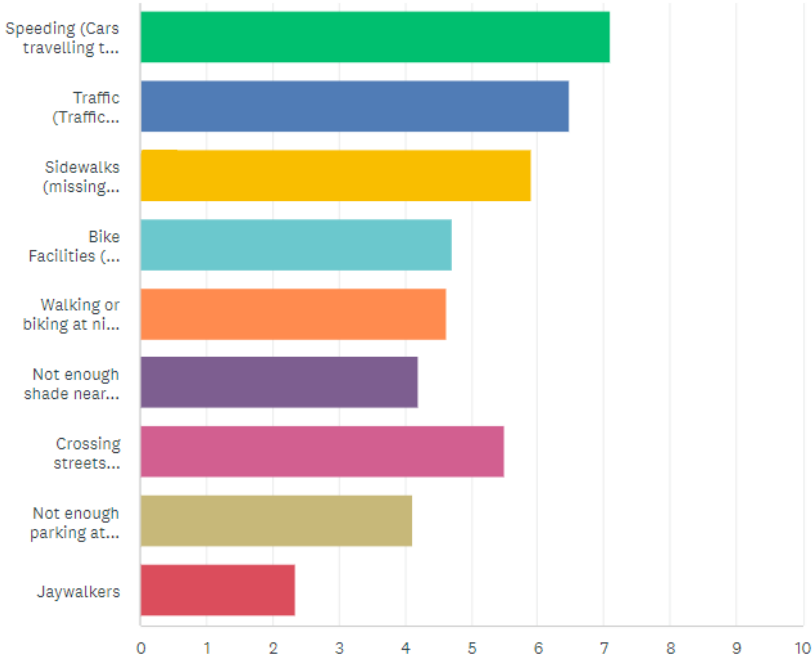
## 6. Andrews Ave Bike Lanes, Transportation Surtax Project (B37)

- ✓ [Please submit a copy of the latest information / communication from the County](#)

# SurveyMonkey as of 2/17/2023

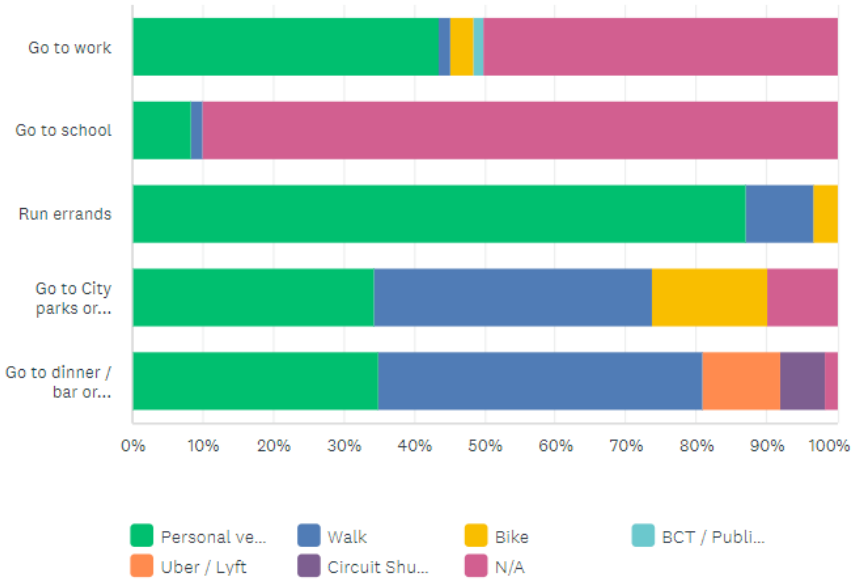
Please rank in order your biggest concerns about transportation in Wilton Manors (1 is biggest concern)

Answered: 63 Skipped: 0



For each of the listed reasons, please mark the transportation mode you most frequently use (you can only select one mode per purpose)

Answered: 63 Skipped: 0

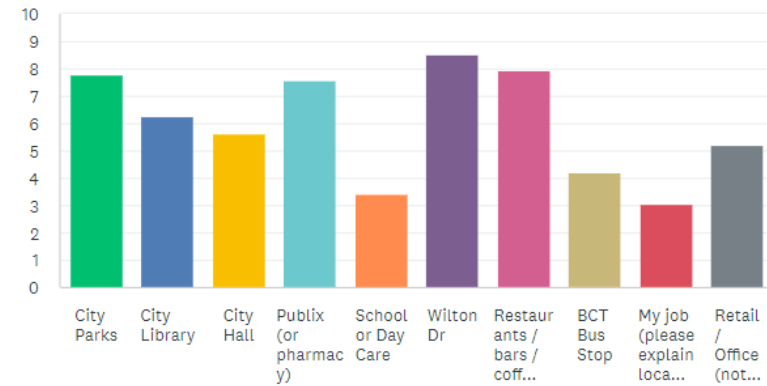




# SurveyMonkey as of 2/17/2023

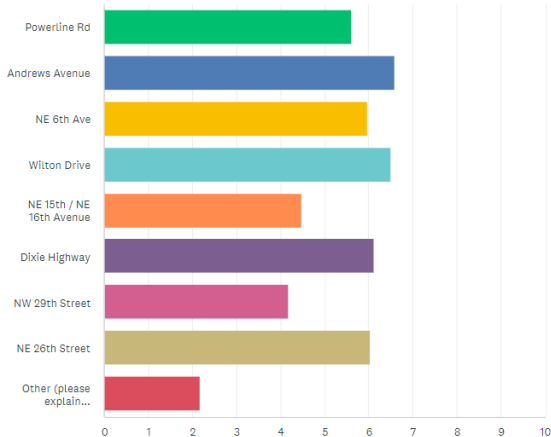
Please rank in order the locations in Wilton Manors you would like to be able to walk or bike to. (1 being highest priority)

Answered: 58 Skipped: 5



Please rank in order the streets you would like to have better walkability (1 being highest priority). Walkability means streets that have facilities for pedestrians and might include wider sidewalks, shade, improved crosswalks, pedestrian lighting, slower vehicle speeds.

Answered: 60 Skipped: 3



On a daily basis, what is your main purpose for walking? (select all that apply)

Answered: 61 Skipped: 2

