



Transportation Master Plan

Agenda

1. **Current Status**
2. Citywide Multimodal Conditions Assessment
3. Plan Study Area Roadways: County & FDOT-Owned
4. Plan Study Area Roadways: City-Owned
5. Westside Neighborhood Route
6. **Next Steps**
7. **Discussion**

Attachments:

1. Presentation: Existing Conditions and Issues for County-Owned Roadways
2. Presentation: Existing Conditions and Issues for FDOT-Owned Roadways
3. City Routes - NE 24 St, NW/NE 21 CT – Field Audit Observations



Meeting Goal:

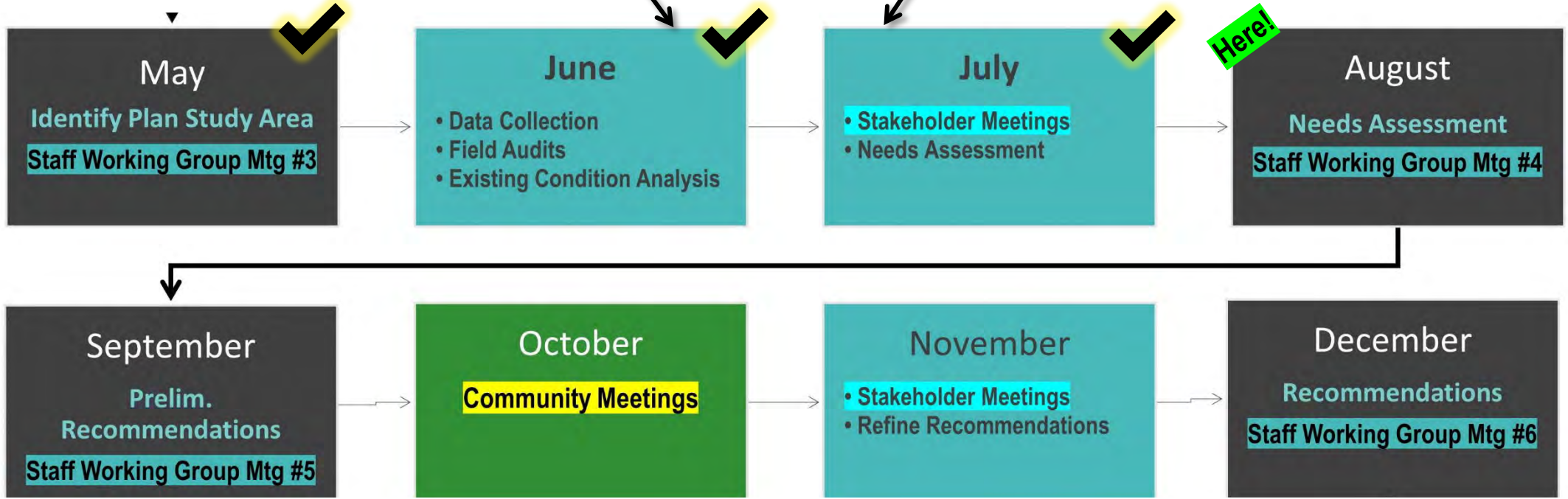
- ✓ Inform about the Citywide Assessment
- ✓ Confirm Existing Conditions for Plan Study Area roadways (County / FDOT owned)
- ✓ Discuss Existing Conditions of City-owned Plan Study Area roadways
- ✓ Confirm Westside Neighborhood Route
- ✓ Confirm Action Items

Project Schedule: Current Status



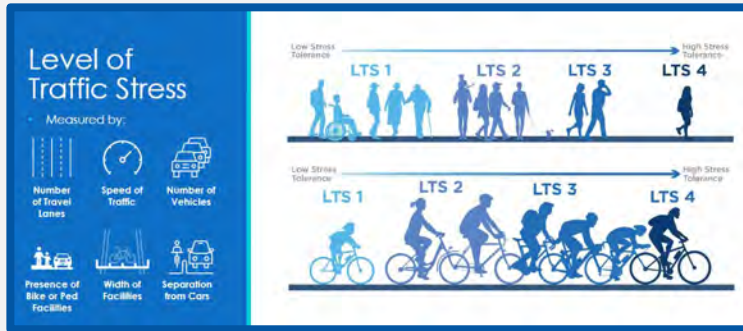
- **Citywide Assessment:** Travel Patterns, Multimodal Facilities and Network, Street Safety, Level of Traffic Stress, & Key Conclusions
- **Field Audits:** Plan Study Area Roadways

- **Stakeholder Meetings – Existing Conditions and Issues**
July 20: Meeting with Broward County
July 24: Meeting with FDOT



Existing Conditions: Citywide Assessment

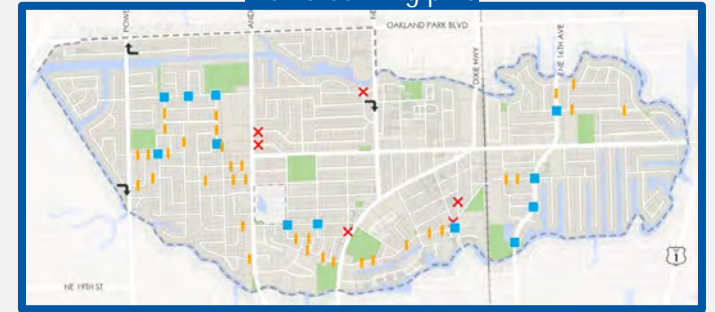
- Demographic information
- Land use and destinations
- Roadway characteristics
- Biking conditions (incl. Level of Traffic Stress)
- Walking conditions (incl. Level of Traffic Stress)
- Crosswalk / Crossings
- Transit locations



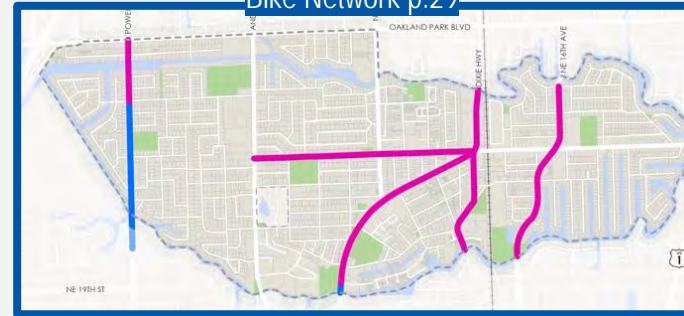
Intersection Control p.24



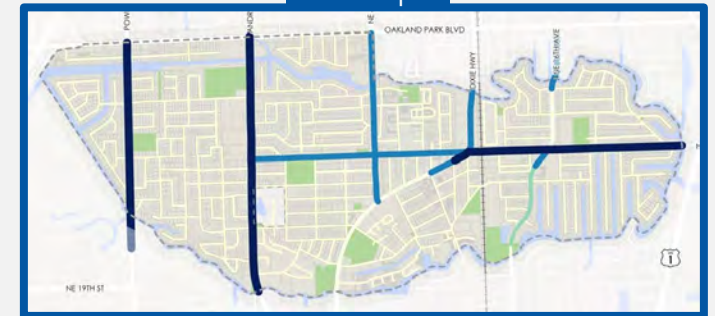
Traffic Calming p.25



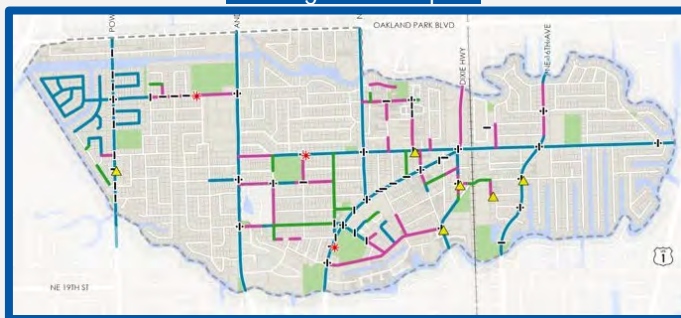
Bike Network p.29



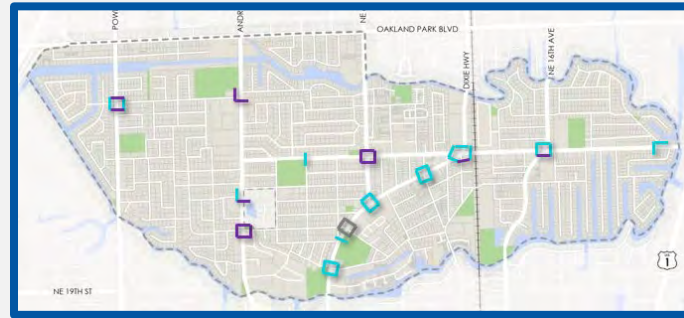
Bike LTS p.34



Walking Network p.41



Crossing as an Elderly Person p.43

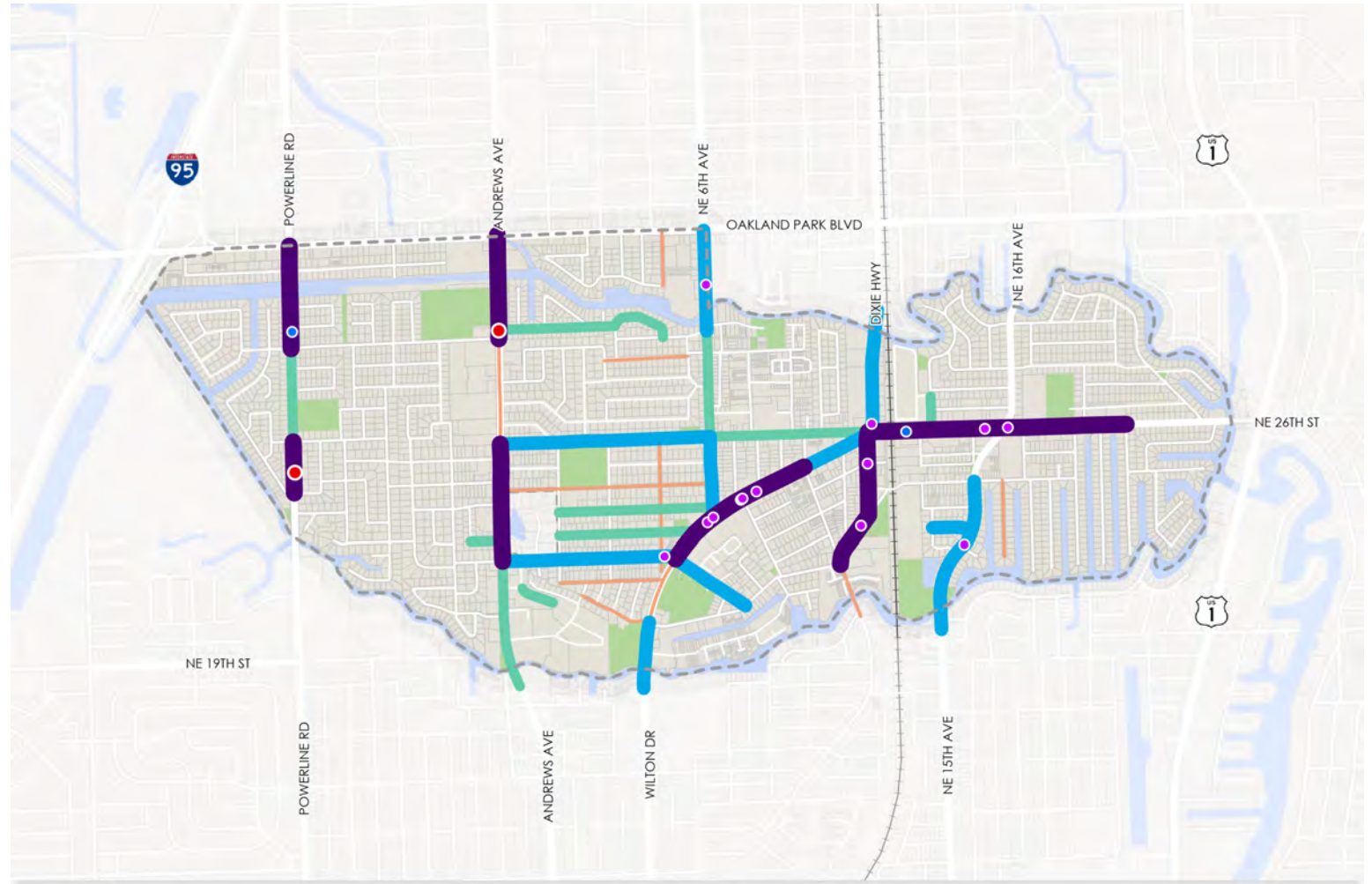


Ped LTS p.46



Walking & Biking Safety

- East / West Crossings
 - Powerline Road
 - Andrews Avenue
 - Dixie Highway
- North / South Crossings
 - Wilton Drive
 - NE 26th Street



LEGEND

- +— Florida East Coast Railway
- City Park
- ⌚ Wilton Manors Study Area

Weighted Walking & Biking Crashes Per Mile

- Highest
-
-
-
- Lowest

- Pedestrian Death
- Serious Injury - Walking
- Serious Injury - Biking

Source: City of Wilton Manors; Broward MPO; Florida DOT, Signal4 2018-2022

0 1/4 1/2 Miles

Level of Traffic Stress

- Measured by:



Number of Travel Lanes



Speed of Traffic



Number of Vehicles



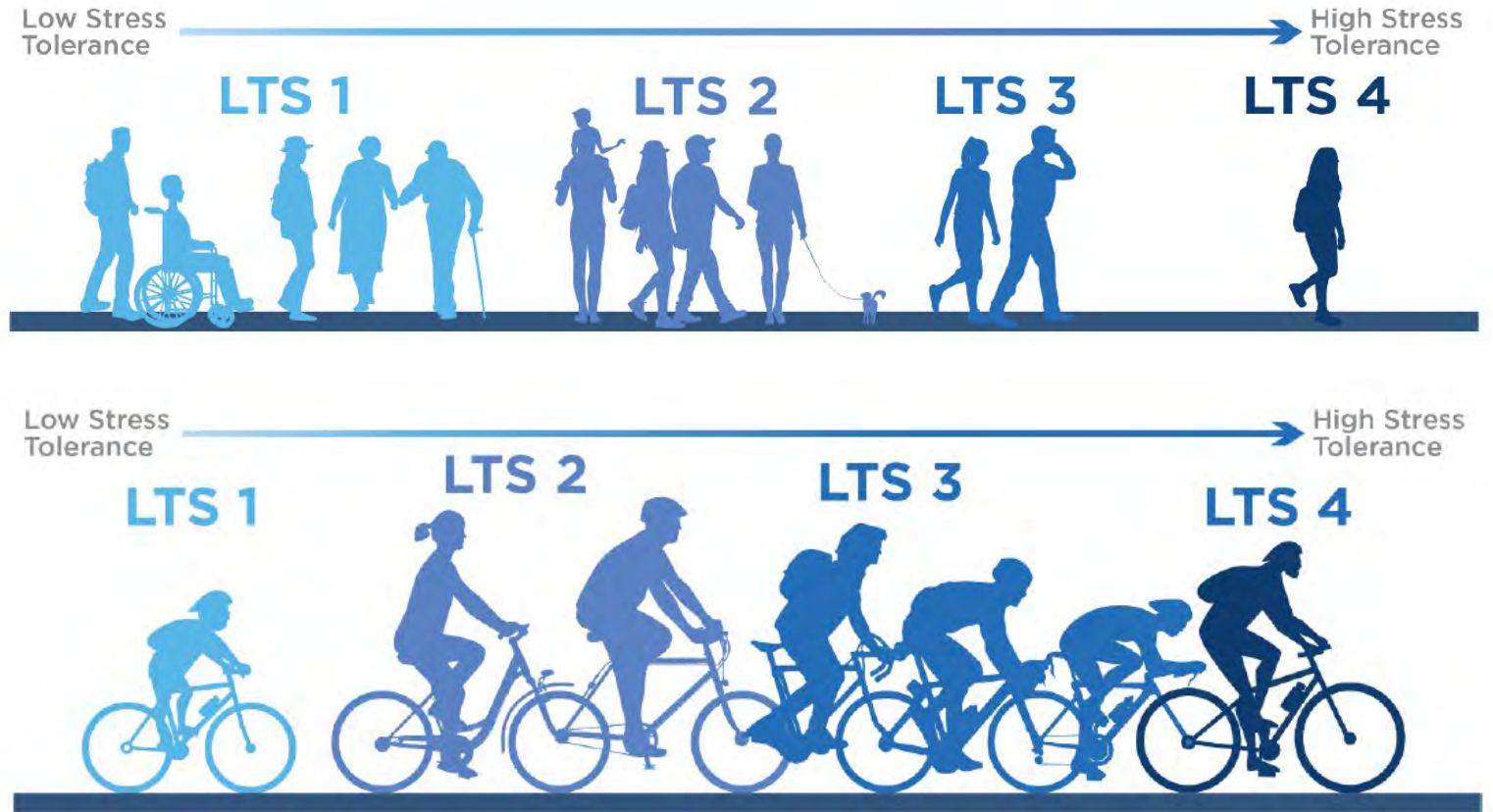
Presence of Bike or Ped Facilities



Width of Facilities



Separation from Cars



LTS 3 & 4 Streets

- Streets with a score of LTS 3 or LTS 4 act as barriers to walking and biking



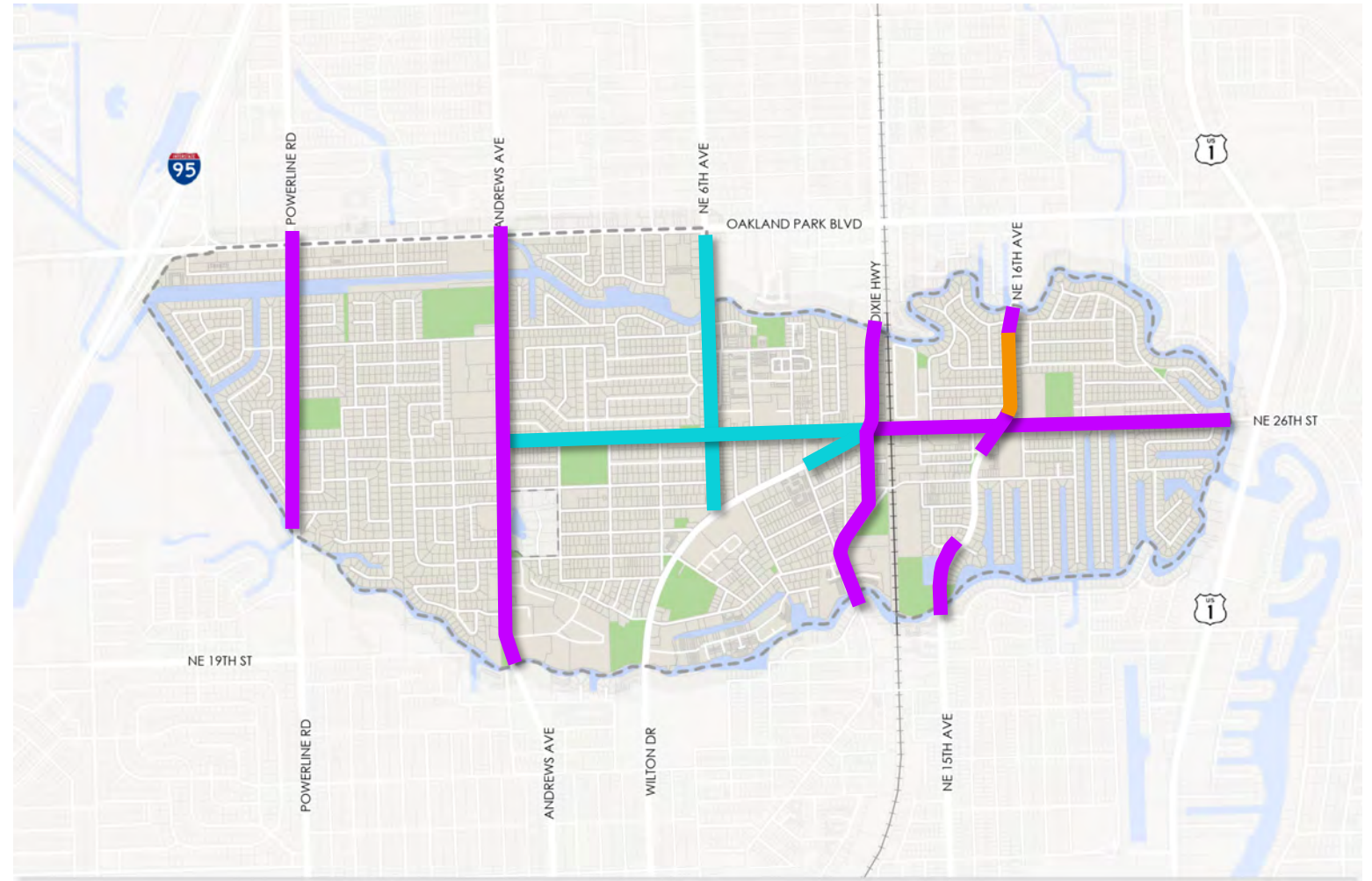
LTS 3 / 4 Streets
for Walking Only



LTS 3 / 4 Streets
for Biking Only



LTS 3 / 4 Streets
for Biking and
Walking



LEGEND

—+— Florida East Coast Railway

■ City Park

⋯ Wilton Manors Study Area

■ Walk only LTS 3 and LTS 4 Roadways

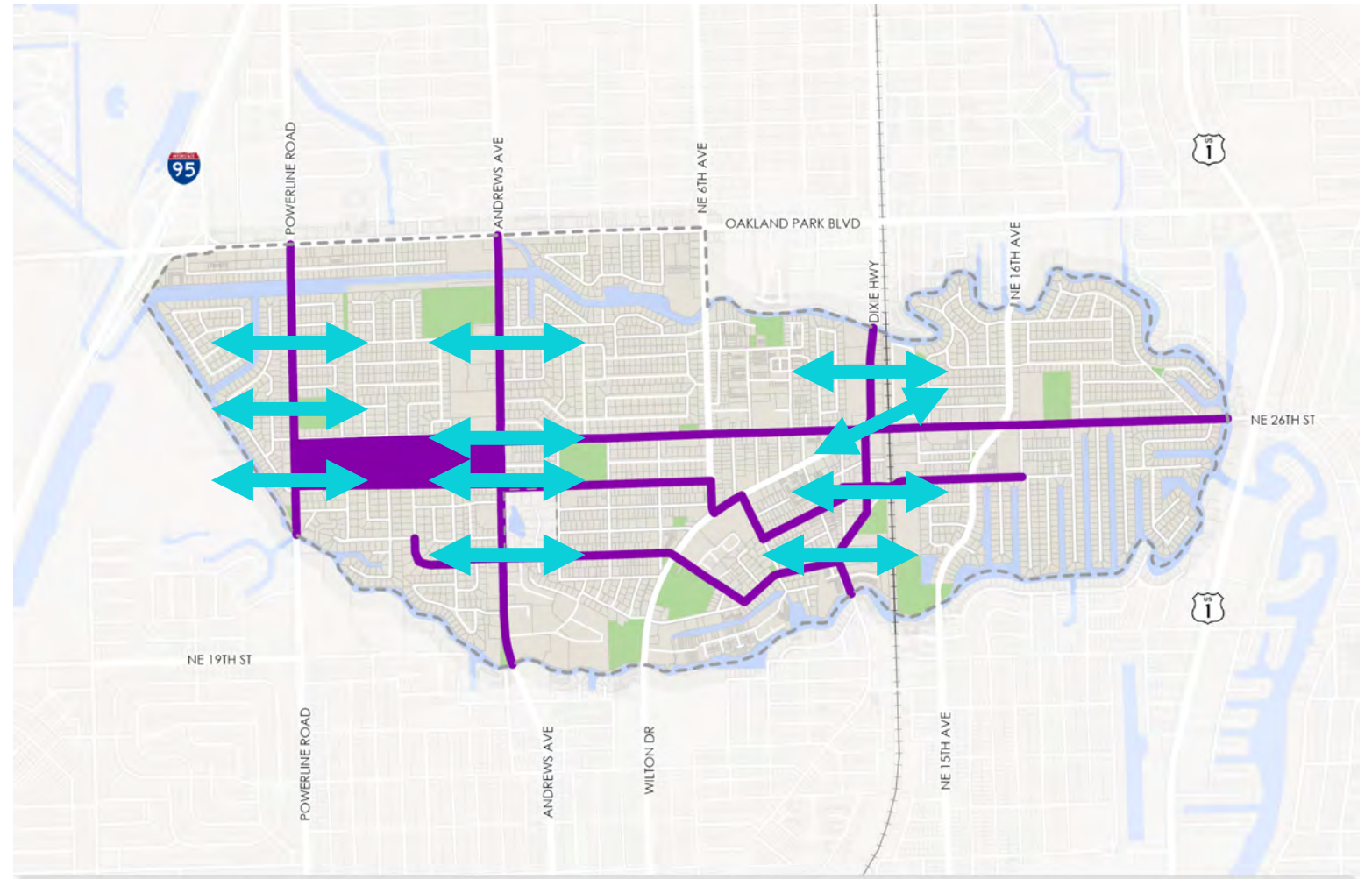
■ Bike only LTS 3 and LTS 4 Roadways

■ Bike and Pedestrian LTS 3 and LTS 4 Roadways



Addressing Issues on 6 Key Corridors

- East / West Crossings
 - Powerline Road
 - Andrews Ave
 - Dixie Hwy
- North / South Crossings
 - NE 26th St
 - Wilton Drive
- LTS 3 & 4 Walking / Biking Facilities
 - Powerline Road
 - Andrews Ave
 - Dixie Hwy
 - Wilton Drive
 - NE 26th St
- Neighborhood Connections
 - NE / NW 24th St
 - NE / NW 21st Ct

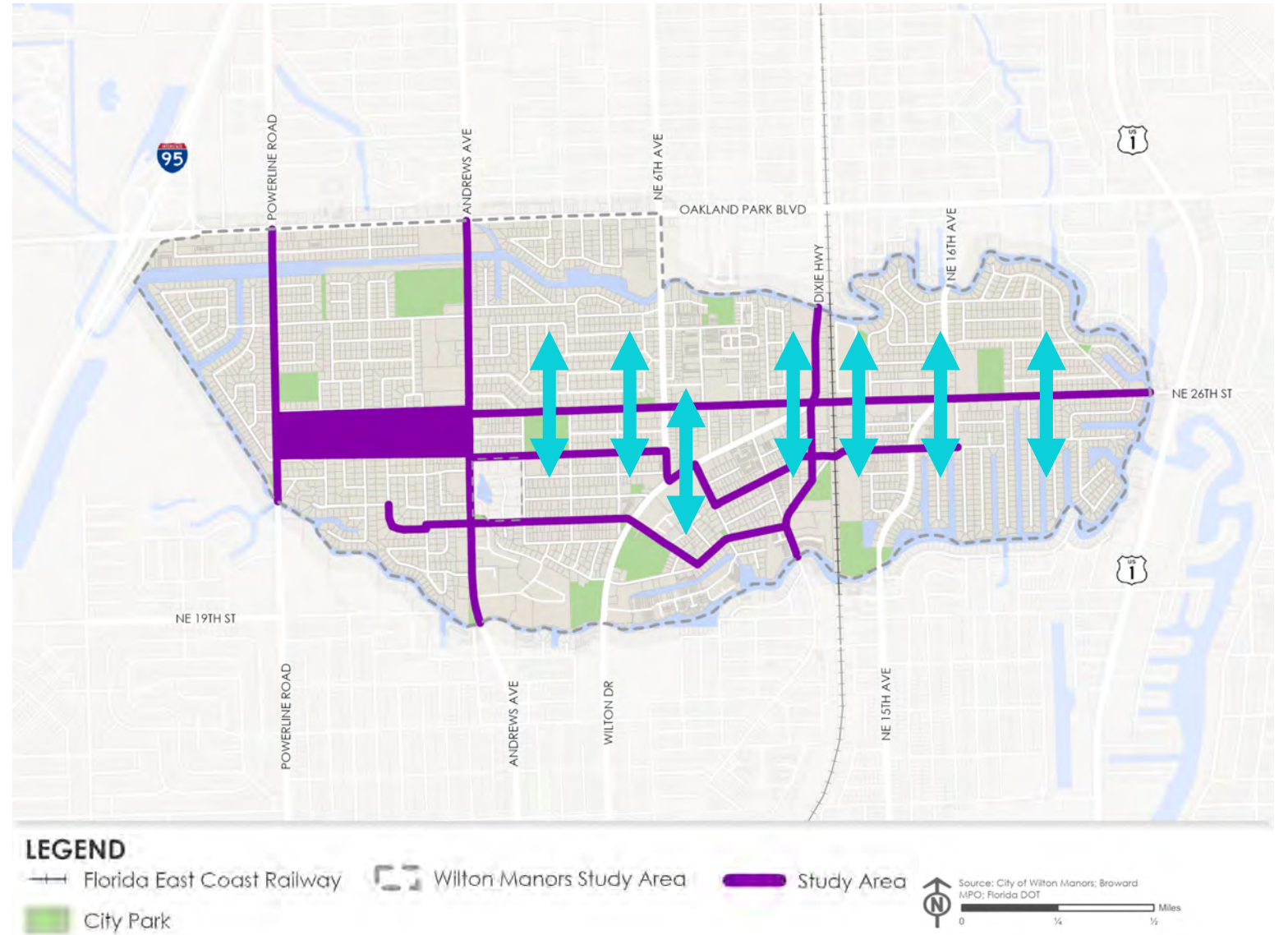


LEGEND

- +— Florida East Coast Railway
 - ▭ Wilton Manors Study Area
 - ▬ Study Area
 - City Park
- Source: City of Wilton Manors; Broward MPO; Florida DOT
- 0 1/4 1/2 Miles

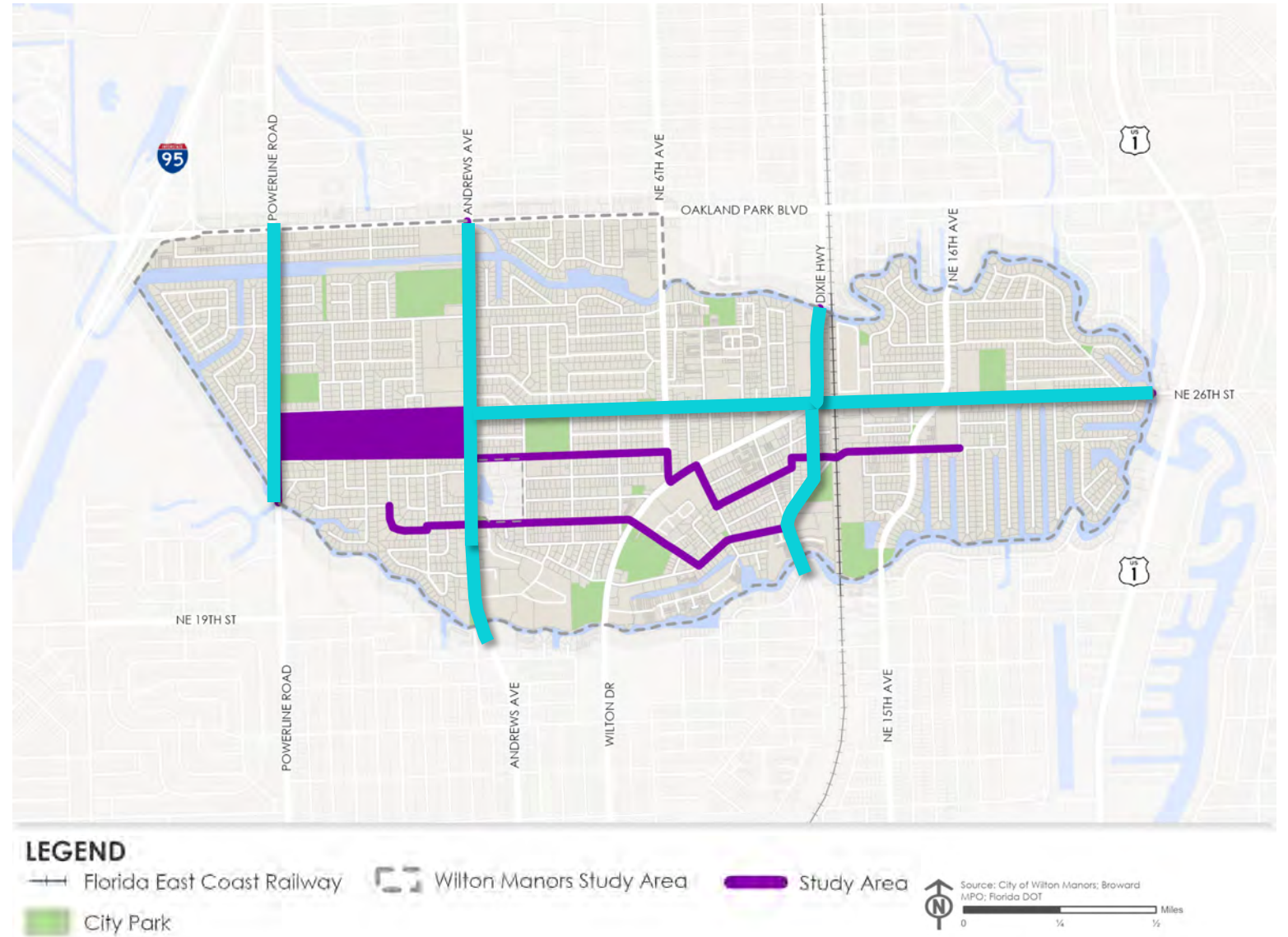
Addressing Issues on 6 Key Corridors

- East / West Crossings
 - Powerline Road
 - Andrews Ave
 - Dixie Hwy
- North / South Crossings
 - NE 26th St
 - Wilton Drive
- LTS 3 & 4 Walking / Biking Facilities
 - Powerline Road
 - Andrews Ave
 - Dixie Hwy
 - Wilton Drive
 - NE 26th St
- Neighborhood Connections
 - NE / NW 24th St
 - NE / NW 21st Ct



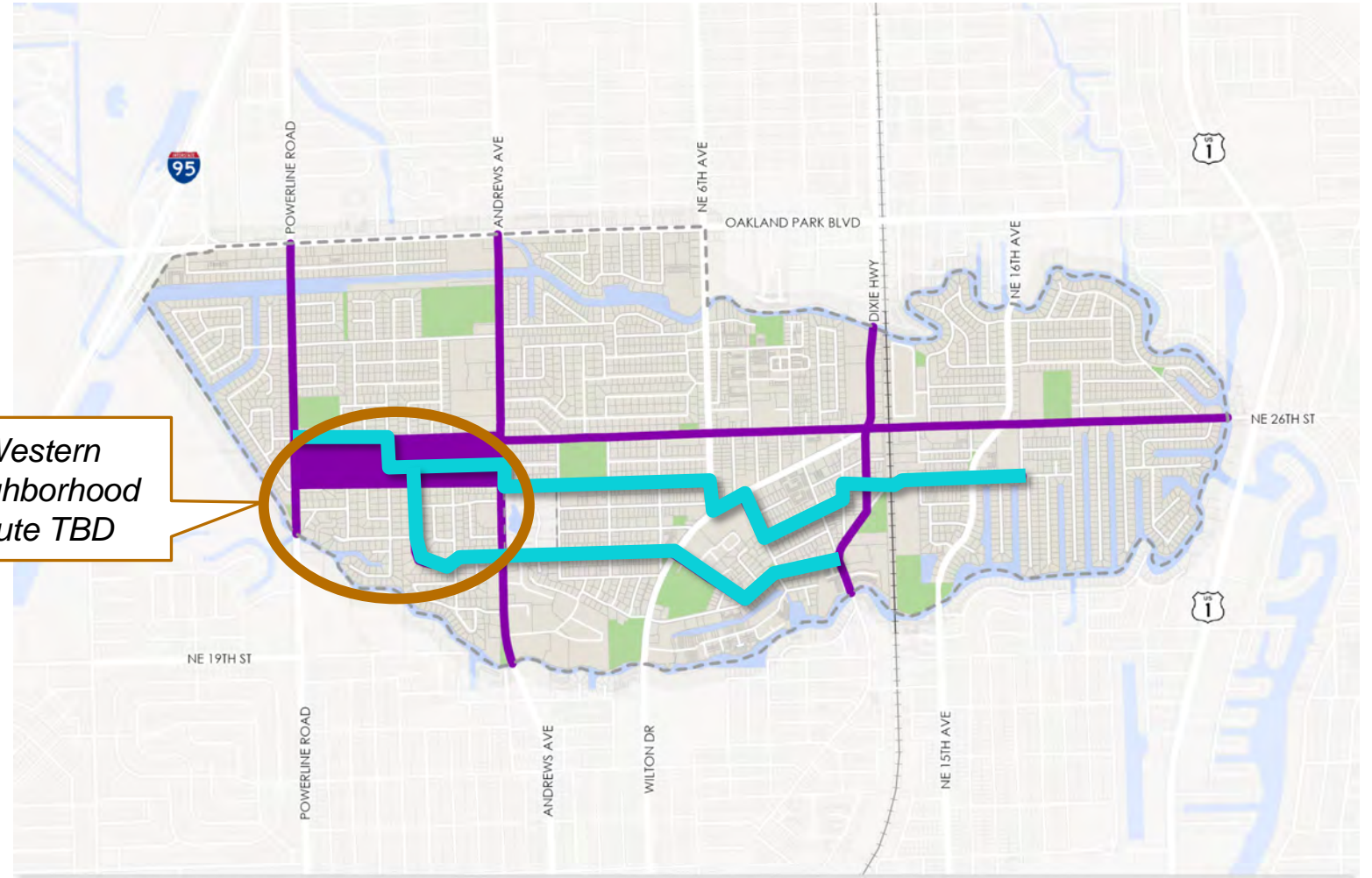
Addressing Issues on 6 Key Corridors

- East / West Crossings
 - Powerline Road
 - Andrews Ave
 - Dixie Hwy
- North / South Crossings
 - NE 26th St
 - Wilton Drive
- LTS 3 & 4 Walking / Biking Facilities
 - Powerline Road
 - Andrews Ave
 - Dixie Hwy
 - NE 26th St
- Neighborhood Connections
 - NE / NW 24th St
 - NE / NW 21st Ct



Addressing Issues on 6 Key Corridors

- East / West Crossings
 - Powerline Road
 - Andrews Ave
 - Dixie Hwy
- North / South Crossings
 - NE 26th St
 - Wilton Drive
- LTS 3 & 4 Walking / Biking Facilities
 - Powerline Road
 - Andrews Ave
 - Dixie Hwy
 - NE 26th St
- Neighborhood Connections
 - NE / NW 24th St
 - NE / NW 21st Ct

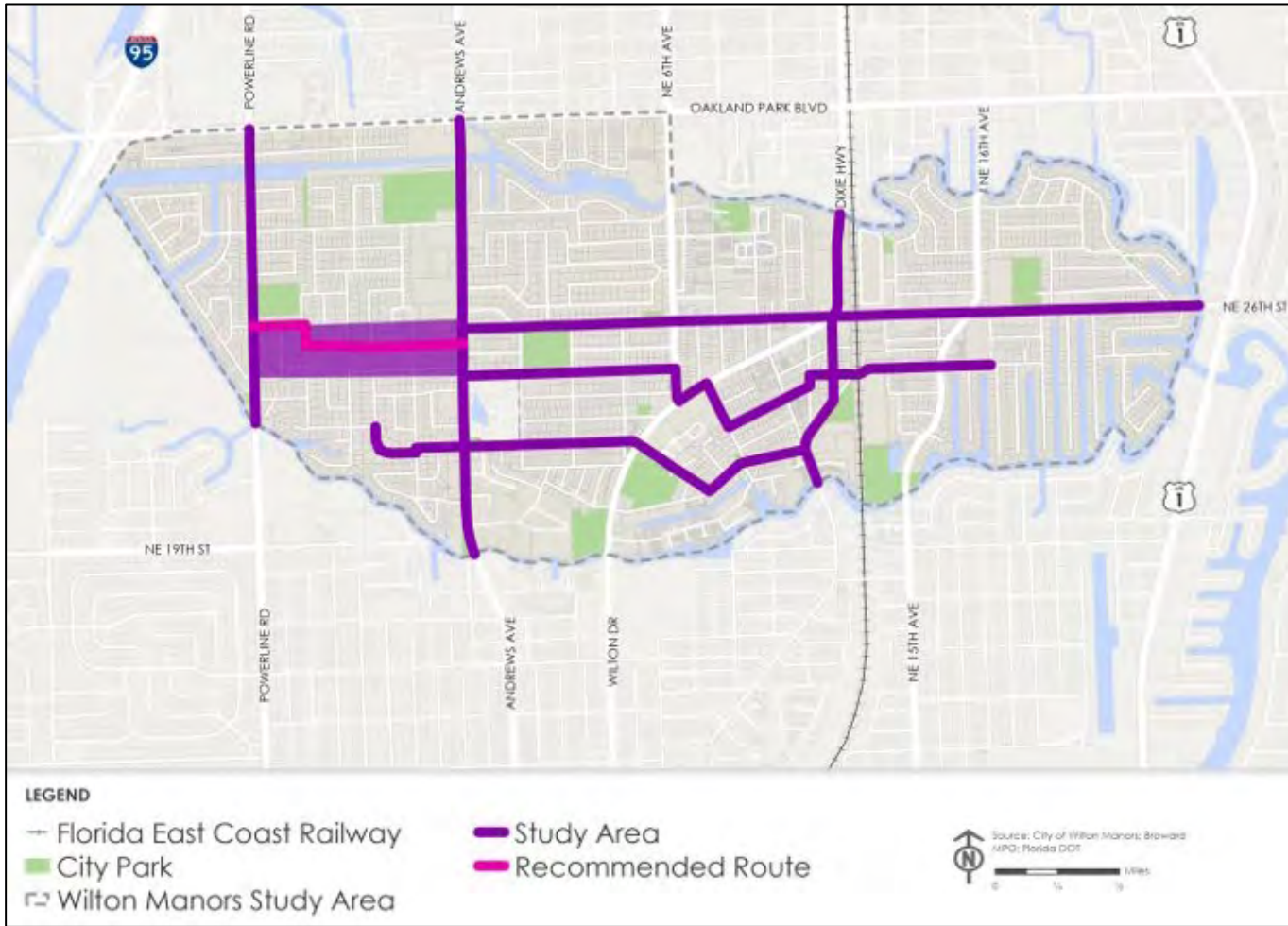


Western neighborhood route TBD

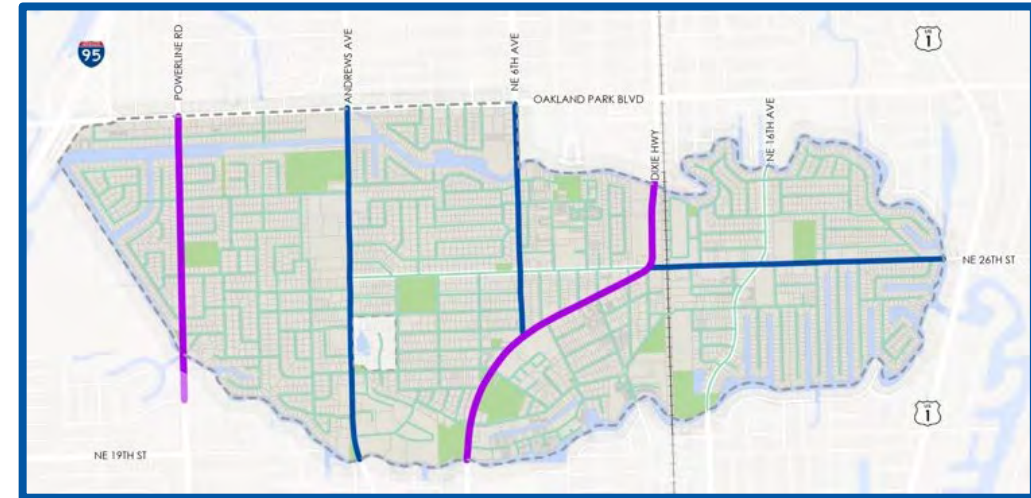
LEGEND

- +— Florida East Coast Railway
 - ▭ Wilton Manors Study Area
 - Study Area
 - City Park
- Source: City of Wilton Manors; Broward MPO; Florida DOT
- 0 1/4 1/2 Miles

Plan Study Area & Roadway Jurisdiction



Roadway Jurisdiction



FDOT	<ul style="list-style-type: none"> • Powerline Rd • Dixie Hwy, from 5-Points north • <i>Wilton Dr</i>
Broward County	<ul style="list-style-type: none"> • Andrews Av • NE 26 St, east of 5-Points • <i>NE 6 Av</i>
City	<ul style="list-style-type: none"> • Dixie Hwy, south of 5-Points • NE 26 St, west of 5-Points • NW 21 Ct • NE 11 Av • NE 21 Ct • NW 25 St • NE 20 St • NE 22 Dr • NE 7 Av • NE 20 Dr • NE 24 St

Powerline Rd

- FDOT-owned
- Biking LTS = 4
- Ped LTS = 4

- ### 5-Year Crash Trends (2018 to 2022) *excluding OP Blvd*
- 212 Total Crashes
 - 46% of Injury Crashes caused by Rear End collisions
 - 30% of crashes at NE 29 St intersection resulted in injuries
 - 1 Ped Crash (Fatality) + 3 Bike crashes (Injury) = All occurred during daytime

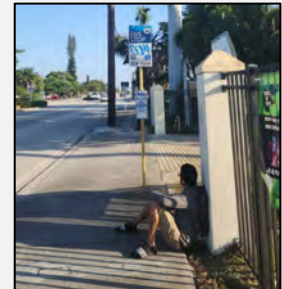
Summary of Existing Issues

X	Speeding vehicles		
	No / Missing bicycle facilities	X	Bicyclists riding on sidewalks
X	Bicyclists riding against traffic	X	Bike: Unprotected bike lanes; Vehicles parked in bike lanes; No bike facilities at intersections
	No / Missing sidewalks	X	Narrow sidewalks (West ROW)
X	Sidewalk Obstructions	X	Sidewalk: (West ROW) Sloped / Abuts back-out parking
X	Long block length to cross to other side of street		
X	Pedestrians crossing not at crosswalks		
X	Long crossing distance at crosswalks		
X	Pedestrian / Vehicle conflicts at crosswalks		
X	Insufficient crossing time for crosswalks		
	Dark at night, especially for pedestrians		
X	Access Management issues: Conflict points; prohibited turn movements; back-out parking		
X	BCT Stops are missing pedestrian amenities / not ADA compliant		
X	No wayfinding signage		
	No school crossing signage or pavement markings for adjacent K-12 Schools		

Riding on sidewalks, against traffic



BCT Stop, No Amenities



Crossing not at Crosswalks



Sidewalk Obstructions



Parking in Bike Lane



Traffic Calming Signage



Focus Locations

- Intersection @ NW 29 St
- Multiblock area adjacent to Mickel Park

Dixie Hwy

- FDOT-owned
- Biking LTS = 3
- Ped LTS = 3

- ### 5-Year Crash Trends (2018 to 2022) *including City-owned roadway*
- 134 Total Crashes
 - Majority of Injury Crashes occurred at 5-Points and 1-block north
 - 26% of Injury Crashes were ped or bike crashes
 - 4 Ped Crash + 2 Bike crashes = 2 occurred at entrance to Dunkin Donuts parking lot

Summary of Existing Issues for FDOT-Owned Roadway

X	Speeding vehicles	
X	No / Missing bicycle facilities: <i>Share the road markings on NB Lanes</i>	X Bicyclists riding on sidewalks
X	Bicyclists riding against traffic	X Bike: <i>Share the road markings on NB Lanes</i>
X	No / Missing sidewalks (<i>East ROW</i>)	Narrow sidewalks
X	Sidewalk Obstructions	Sidewalk:
X	Long block length to cross to other side of street	
X	Pedestrians crossing not at crosswalks	
X	Long crossing distance at crosswalks	
X	Pedestrian / Vehicle conflicts at crosswalks	
X	Insufficient crossing time for crosswalks	
X	Dark at night, especially for pedestrians	
X	Access Management issues: <i>Frequent turn movements; No center lane median; back-out parking; LT in / out of Publix and Dunkin Donuts parking lots</i>	
X	BCT Stops are missing pedestrian amenities / not ADA compliant	
X	No wayfinding signage	
	No school crossing signage or pavement markings for adjacent K-12 Schools	

Focus Locations

- 5-Points
- Multiblock area north of 5-Points

Riding on sidewalks, against traffic



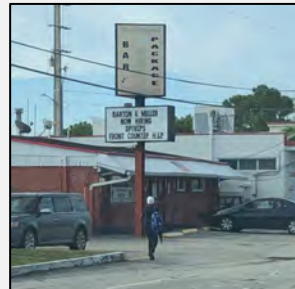
Darting into roadway



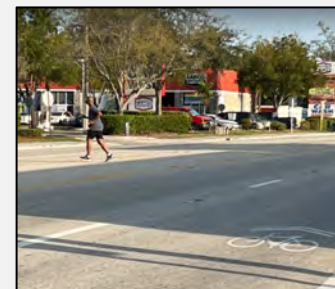
BCT Stop, No Amenities



No Sidewalk



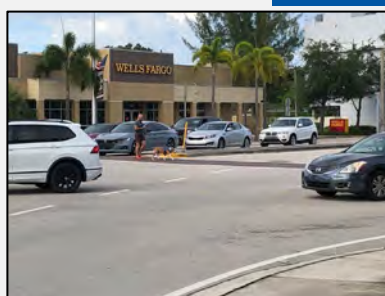
Crossing not at Crosswalks



Crossing at 5-Points



Ped/Vehicle Conflicts



Wilton Dr

- FDOT-owned
- Biking LTS = 1
- Ped LTS = 2

5-Year Crash Trends (2018 to 2022) 1 block south of NE 21 Ct to 1 block east of NE 7 Av, plus NE 6 Av from Wilton Dr to NE 24 St, and approx. 1 block east and west of NE 21 Ct.

- 46% of Injury Crashes caused involved Ped or Bike
- Crashes occurring at night: 65% of Injury & 71% of Serious Injury; 28% of crashes at night result in injuries
- 3 Injury & 6 Serious Injury Crashes involved Ped or Bike

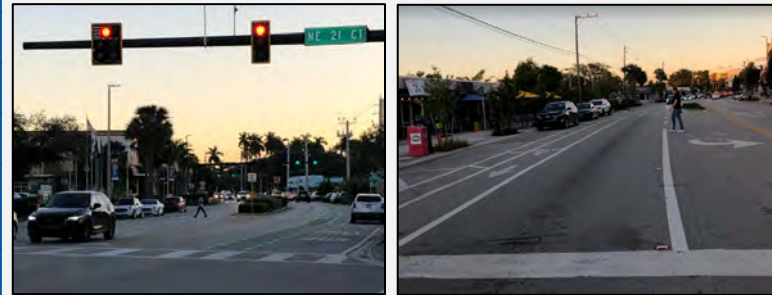
Summary of Existing Issues

	Speeding vehicles	
	No / Missing bicycle facilities	X Bicyclists riding on sidewalks (a.m.)
	Bicyclists riding against traffic	X Bike: Large group of bicyclists
	No / Missing sidewalks	Narrow sidewalks
X	Sidewalk Obstructions	X Sidewalk: Large groups of pedestrians / Crowding
X	Long block length to cross to other side of street (NE 7 Av)	
X	Pedestrians crossing not at crosswalks	
X	Long crossing distance at crosswalks	
X	Pedestrian / Vehicle conflicts at crosswalks	
	Insufficient crossing time for crosswalks	
X	Dark at night, especially for pedestrians (NE 21 Ct, NE 7 Av)	
X	Access Management issues: RT slip lanes at NE 7 Av; Cut-through traffic at NE 7 Av	
	BCT Stops are missing pedestrian amenities / not ADA compliant	
	No wayfinding signage	

Crossing not at Crosswalks



Crowded Sidewalks



Ped/Vehicle Conflicts



Focus Locations

- NE 21 Ct
- Multiblock area NE 6 Av to NE 7 Av

Andrews Av

- County-owned
- Biking LTS = 4
- Ped LTS = 3

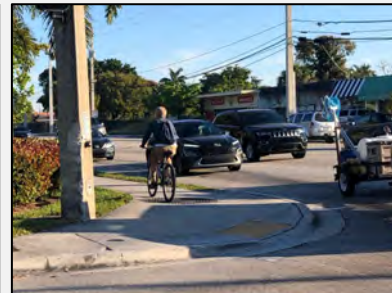
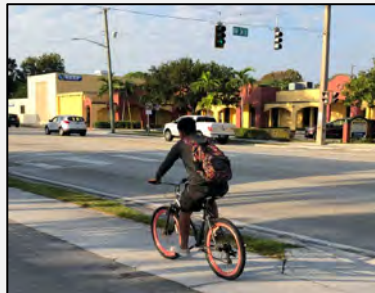
Summary of Existing Issues

X	Speeding vehicles		
X	No / Missing bicycle facilities	X	Bicyclists riding on sidewalks
X	Bicyclists riding against traffic		Bike:
	No / Missing sidewalks	X	Narrow sidewalks
X	Sidewalk Obstructions	X	Sidewalk: Near NE 24 St, abuts back-out parking
X	Long block length to cross to other side of street		
X	Pedestrians crossing not at crosswalks		
X	Long crossing distance at crosswalks		
X	Pedestrian / Vehicle conflicts at crosswalks		
X	Insufficient crossing time for crosswalks		
	Dark at night, especially for pedestrians		
X	Access Management issues: No center lane median; numerous driveway openings; off-set intersections; conflict points; prohibited turn movements		
X	BCT Stops are missing pedestrian amenities / not ADA compliant		
X	No wayfinding signage		
X	No school crossing signage or pavement markings for adjacent K-12 Schools (WME, K-8 Charter)		

5-Year Crash Trends (2018 to 2022) *excluding OP Blvd*

- 361 Total Crashes
- 41% of Injury Crashes caused by Rear End collisions
- Crashes occurring at night: 37% of Injury, 60% of Serious Injury, & 100% of fatality; 35% of crashes at night result in injuries
- 2 Ped + 7 Bike crashes

Riding on sidewalks, against traffic



Sidewalk Obstructions



Crossing not at Crosswalks



BCT Stop, No Amenities



Prohibited Turns



Ped/Vehicle Conflicts



Focus Locations

- Intersection @ NW 29 St
- Intersection @ NE 26 St
- Off-Set Intersection @ NW / NE 24 St
- Intersection @ NW/NE 21 Ct

NE 26 St

- County-owned
- Biking LTS = 4
- Ped LTS = 4

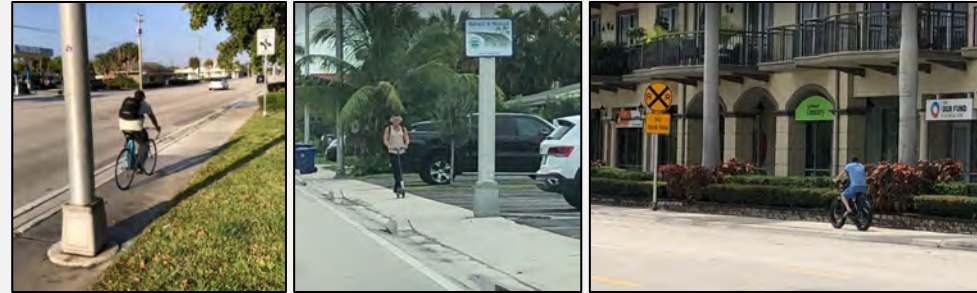
Summary of Existing Issues for County-Owned Roadway

X	Speeding vehicles		
X	No / Missing bicycle facilities	X	Bicyclists riding on sidewalks
X	Bicyclists riding against traffic		Bike:
	No / Missing sidewalks	X	Narrow sidewalks
X	Sidewalk Obstructions (incl. residential garbage cans)	X	Sidewalk: Eastern end – Sloped & Abuts back-out parking
X	Long block length to cross to other side of street		
X	Pedestrians crossing not at crosswalks (especially in the morning: Near 5-Points, Ne 14 Av, Starbucks, Mid-block east of NE 16 Av)		
X	Long crossing distance at crosswalks		
X	Pedestrian / Vehicle conflicts at crosswalks		
X	Insufficient crossing time for crosswalks		
X	Dark at night, especially for pedestrians		
X	Access Management issues: No center lane median; numerous driveway openings; conflict points		
X	BCT Stops are missing pedestrian amenities / not ADA compliant		
X	No wayfinding signage		
	No school crossing signage or pavement markings for adjacent K-12 Schools		

5-Year Crash Trends (2018 to 2022) including City-owned roadway

- 274 Total Crashes
- Majority of injury crashes near NE 6 Av or near NE 15 to NE 16 Av
- Crashes occurring at night: 30% of Injury, 60% of Serious Injury
- 30% of Injury Crashes were Ped / Bike crashes; 6 Ped + 11 Bike crashes

Riding on sidewalks



Sidewalk Obstructions



Crossing not at Crosswalks



Ped/Vehicle Conflicts

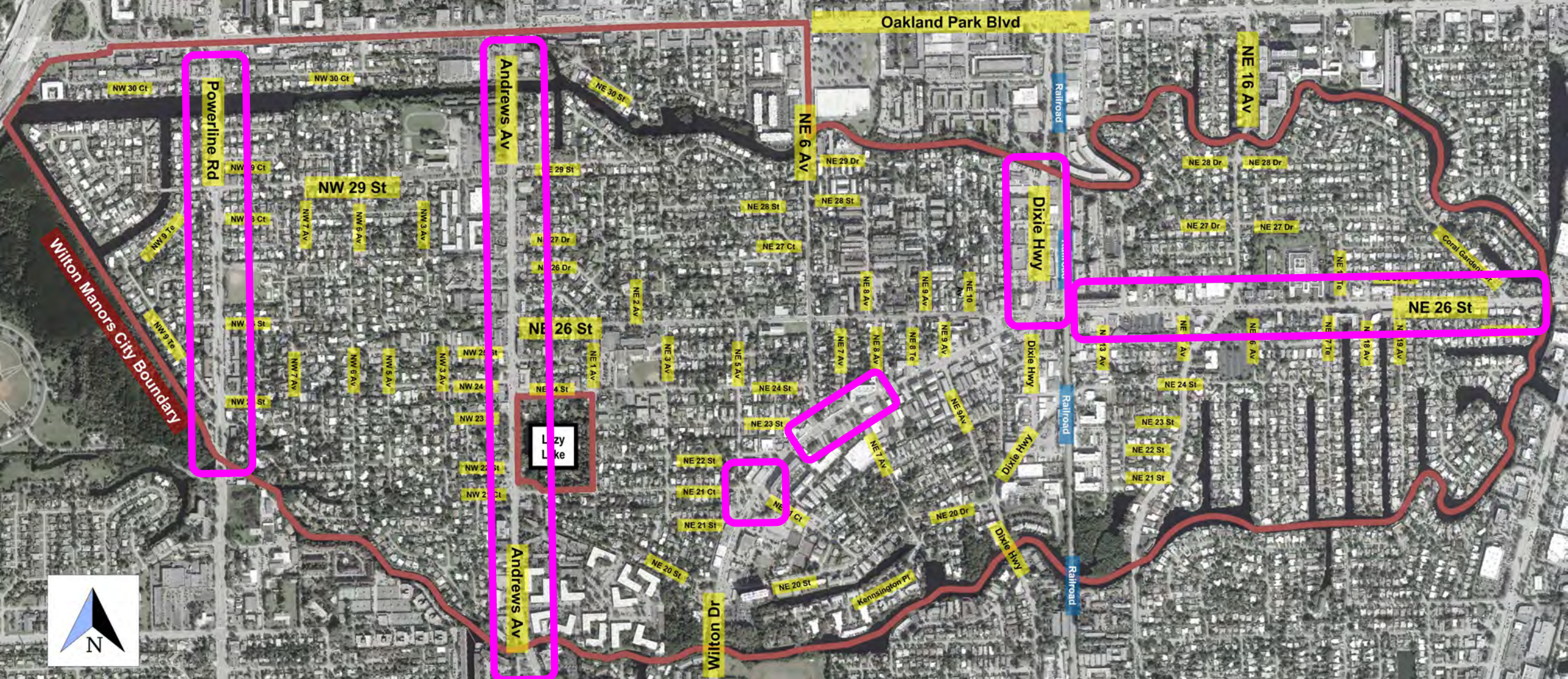


BCT Stop, No Amenities



Focus Locations

- 5-Points
- Intersection @ NE 15/16 Av
- Multiblock adjacent to Holy Site
- Multiblock east of NE 15/16 Av



QUESTION: Additional existing conditions or issues for these roadways?

NE 26 St

- City-owned
- Biking LTS = 3
- Ped LTS = 1 west of NE 6 Av / 2 @ NE 6 Av and east

5-Year Crash Trends (2018 to 2022)

- 1 Injury Crash near WME (WB to SB LT from NE 26 St to NE 3 Av)
- 7 Injury Crash within 150 ft of NE 6 Av intersection (all directions)
- NE 6 Av: 4 injury crashes caused by running red light
- NE 6 Av: 3 Injury crashes involving pedestrians (including in crosswalk)

Summary of Existing Issues: City-Owned Roadway

X	Speeding vehicles: <i>WME School Speed Limit (15 MPH) 7:30 - 8:30 am & 2:30 - 3:30 pm from Andrews Av to NE 6 Av</i>	
X	No / Missing bicycle facilities: <i>Bike Lanes begin / end ~ 250 ft east of Andrews Av; No bike lane within 100 ft of NE 6 Av intersection</i>	X Bicyclists riding on sidewalks
X	Bicyclists riding against traffic	
	Bike	
X	No / Missing sidewalks southern ROW, from Andrews Av to NE 1 Av	
X	Narrow sidewalks	
X	Sidewalk Obstructions: <i>near NE 6 Av</i>	Sidewalk
X	Long block length to cross to other side of street	
X	Pedestrians crossing not at crosswalks at <i>NE 1 Av</i>	
	Long crossing distance at crosswalks	
X	Pedestrian / Vehicle conflicts at crosswalks <i>NE 6 Av</i>	
	Insufficient crossing time for crosswalks	
X	Dark at night, especially for pedestrians <i>NE 6 Av</i>	
X	Access Management issues: <i>NE 1 Av is 1-way NB; NE 3 Av is 1-way SB; Left Turns near WME during drop-off / pick-up; NE 6 Av - Permissive only left-turn phases for all approaches</i>	
X	No wayfinding signage <i>NE 6 Av</i>	
X	No school crossing signage or pavement markings for adjacent K-12 Schools (<i>Little Flowers, KIDS</i>)	

Large group of pedestrians



Missing Sidewalk in South ROW



Sidewalk Obstructions



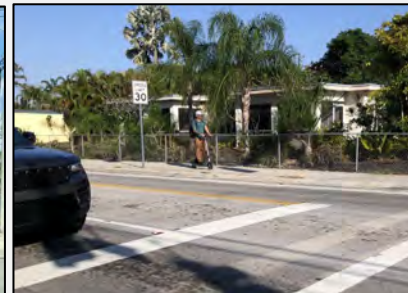
Left turns at WME



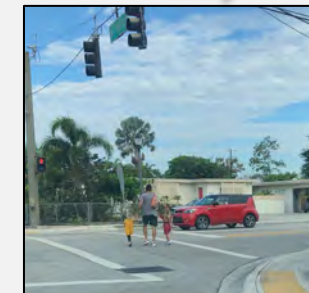
Crossing not at crosswalk



Riding on sidewalks



Special Populations



Focus Locations

- WME Multiblock Area
- Intersection at NE 6 Av

Summary of Existing Issues: City-Owned Roadway		
X	Speeding vehicles: <i>WME School Speed Limit (15 MPH) 7:30 - 8:30 am & 2:30 - 3:30 pm from Andrews Av to NE 6 Av</i>	
X	No / Missing bicycle facilities: <i>Bike Lanes begin / end ~ 250 ft east of Andrews Av; No bike lane within 100 ft of NE 6 Av intersection</i>	X Bicyclists riding on sidewalks
X	Bicyclists riding against traffic	
	Bike	
X	No / Missing sidewalks <i>southern ROW, from Andrews Av to NE 1 Av</i>	
X	Narrow sidewalks	
X	Sidewalk Obstructions: <i>near NE 6 Av</i>	Sidewalk
X	Long block length to cross to other side of street	
X	Pedestrians crossing not at crosswalks at <i>NE 1 Av</i>	
	Long crossing distance at crosswalks	
X	Pedestrian / Vehicle conflicts at crosswalks <i>NE 6 Av</i>	
	Insufficient crossing time for crosswalks	
X	Dark at night, especially for pedestrians <i>NE 6 Av</i>	
X	Access Management issues: <i>NE 1 Av is 1-way NB; NE 3 Av is 1-way SB; Left Turns near WME during drop-off / pick-up; NE 6 Av - Permissive only left-turn phases for all approaches</i>	
X	No wayfinding signage <i>NE 6 Av</i>	
X	No school crossing signage or pavement markings for adjacent K-12 Schools (<i>Little Flowers, KIDS</i>)	



QUESTION: Additional existing conditions or issues for this roadway?

Focus Locations

- WME Multiblock Area
- Intersection at NE 6 Av

Dixie Hwy

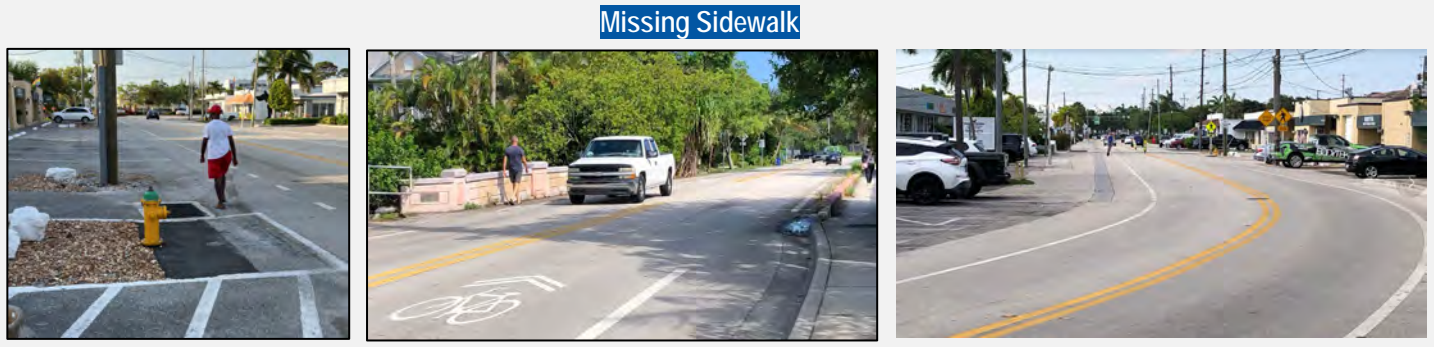
- City-owned
- Bike LTS = 1
- Ped LTS = 3

5-Year Crash Trends (2018 to 2022)

- 36 Total Crashes
- 31% of crashes resulted in Injuries
- 2 Injury crashes as a result of back-in parking
- 3 Ped/E-Scooter Serious Injury Crashes + 1 Ped Injury Crash (2 crashes at night)

Summary of Existing Issues: City-Owned Roadway

X	Speeding vehicles	
X	Missing bicycle facilities: at Bridge	X Bicyclists riding on sidewalks
X	Bicyclists riding against traffic	
X	Bike: <i>Unprotected</i>	
X	Missing sidewalks East ROW from 2300 to 2200 & at Bridge; West ROW from 2200 to 2110; No sidewalk in City parking lot @ 24 St	
X	Narrow sidewalks: East Row on bridge	
X	Sidewalk Obstructions	X Sidewalk: West ROW sidewalk is at-grade & abuts back-out parking from 2400 to 2200
X	Long block length to cross to other side of street	
X	Pedestrians crossing not at crosswalks	
	Long crossing distance at crosswalks	
X	Pedestrian / Vehicle conflicts at crosswalks: <i>Cars not yielding to Ped's at mid-block crosswalks; crosswalks not marked at side streets</i>	
	Insufficient crossing time for crosswalks	
X	Dark at night, especially for pedestrians	
X	Access Management issues: <i>Back-In Parking, Large Driveway openings;</i>	
X	No wayfinding signage	
	No school crossing signage or pavement markings for adjacent K-12 Schools	



Missing Sidewalk



Riding Against Traffic



Sidewalk Obstructions



Ped / Vehicle Conflicts

Focus Locations

- Multiblock area south of 5-Points

Dixie Hwy

Discussion

Summary of Existing Issues: City-Owned Roadway

X	Speeding vehicles	
X	Missing bicycle facilities: <i>at Bridge</i>	X Bicyclists riding on sidewalks
X	Bicyclists riding against traffic	
X	Bike: <i>Unprotected</i>	
X	Missing sidewalks <i>East ROW from 2300 to 2200 & at Bridge; West ROW from 2200 to 2110; No sidewalk in City parking lot @ 24 St</i>	
X	Narrow sidewalks: <i>East Row on bridge</i>	
X	Sidewalk Obstructions	X Sidewalk: <i>West ROW sidewalk is at-grade & abuts back-out parking from 2400 to 2200</i>
X	Long block length to cross to other side of street	
X	Pedestrians crossing not at crosswalks	
	Long crossing distance at crosswalks	
X	Pedestrian / Vehicle conflicts at crosswalks: <i>Cars not yielding to Ped's at mid-block crosswalks; crosswalks not marked at side streets</i>	
	Insufficient crossing time for crosswalks	
X	Dark at night, especially for pedestrians	
X	Access Management issues: <i>Back-In Parking, Large Driveway openings;</i>	
X	No wayfinding signage	
	No school crossing signage or pavement markings for adjacent K-12 Schools	



QUESTION: Additional existing conditions or issues for this roadway?

Focus Locations

- Multiblock area south of [unclear] points

NE 24 St Route

- Includes the two areas of NE 24 St
 - NE 24 St from Andrews Av to NE 6 Av
 - NE 24 St from Dixie Hwy to NE 17 Te
- Route is connected by NE 6 Av (County-owned), Wilton Dr (FDOT-owned), NE 7 Av, NE 22 Dr, NE 11 Av, and ped-access to city-owned parking lot
- Bike LTS: 1, except: NE 6 Av = 3, Crossing at NE 15 Av = 2
- Ped LTS: NE 6 Av = 2, Wilton Dr = 2, Crossing at Dixie Hwy = 3, Crossing at NE 15 Av = 2



Summary of Existing Issues			
	Speeding vehicles		
X	Missing bicycle facilities: No bike facilities for entire route except along Wilton Dr		Bicyclists riding on sidewalks
X	Bicyclists riding against traffic		
X	No sidewalks on either side of roadway: (1) Between NE 5 Av and NE 6 Av, (2) NE 7 Av, (3) NE 22 Dr, (4) NE 11 Av, (5) City-owned Parking Lot, and (5) between NE 15 Av and NE 17 Te		
X	Narrow sidewalks		
X	Sidewalk Obstructions	X	Sidewalk: At-grade sidewalks abutting back-out parking from Andrews Av to NE 1 Av, and along NE 6 Av

X	Long block length to cross to other side of street: Local road intersections have no marked crosswalks; NE 24 St from Dixie Hy to NE 15 Av
X	Pedestrians crossing not at crosswalks
X	Long crossing distance at crosswalks: Wilton Dr @ NE 6 Av; NE 24 St @ Dixie Hy; NE 24 St at NE 15 Av
X	Pedestrian / Vehicle conflicts at crosswalks: Wilton Dr @ NE 6 Av; NE 24 St @ Dixie Hy; NE 24 St at NE 15 Av
X	Insufficient crossing time for crosswalks: Wilton Dr @ NE 6 Av; NE 24 St @ Dixie Hy; NE 24 St at NE 15 Av
X	Dark at night, especially for pedestrians
X	Access Management issues: Back-In Parking; On-street parking
X	No wayfinding signage
	No school crossing signage or pavement markings for adjacent K-12 Schools

— East or South Sidewalk Only

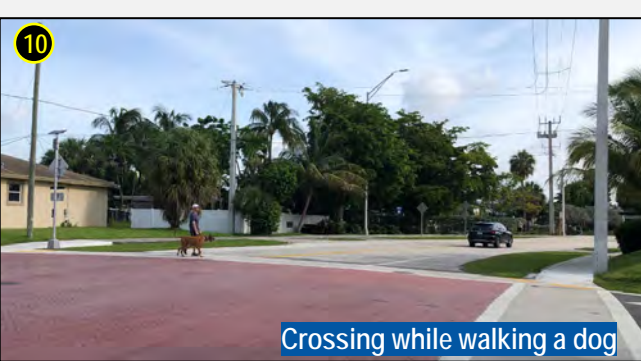
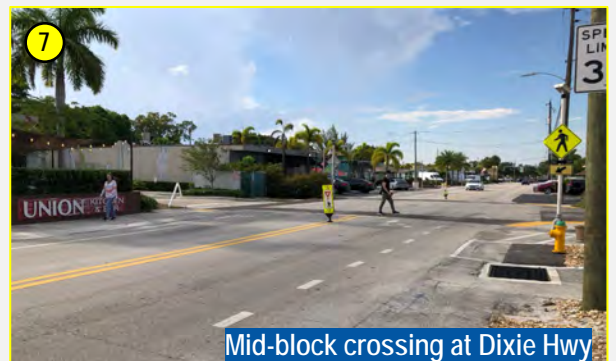
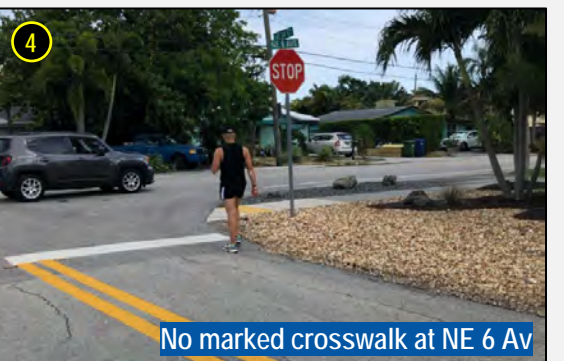
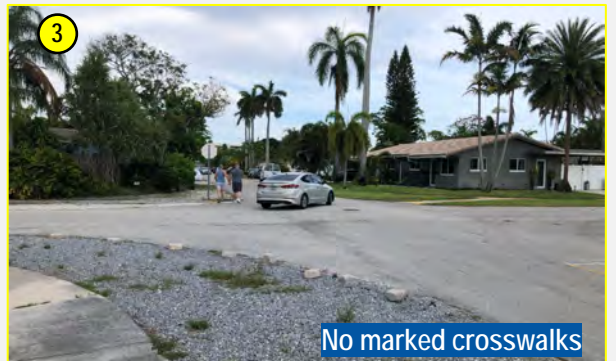
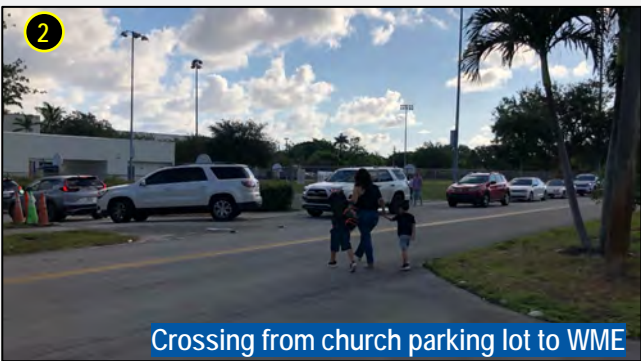
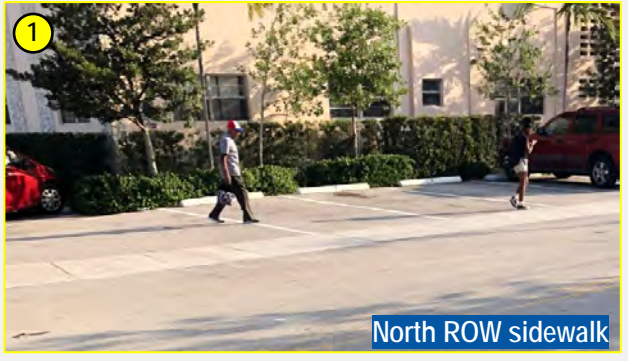
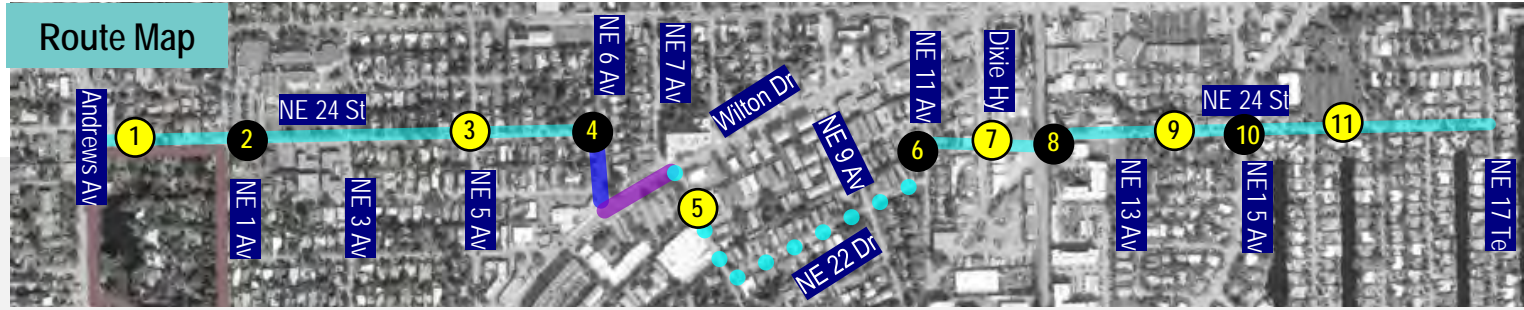
— West or North Sidewalk Only

— Sidewalks on Both Sides

— East-West Crosswalk

— North-South Crosswalk

NE 24 St Route



NE 24 St Route

Discussion



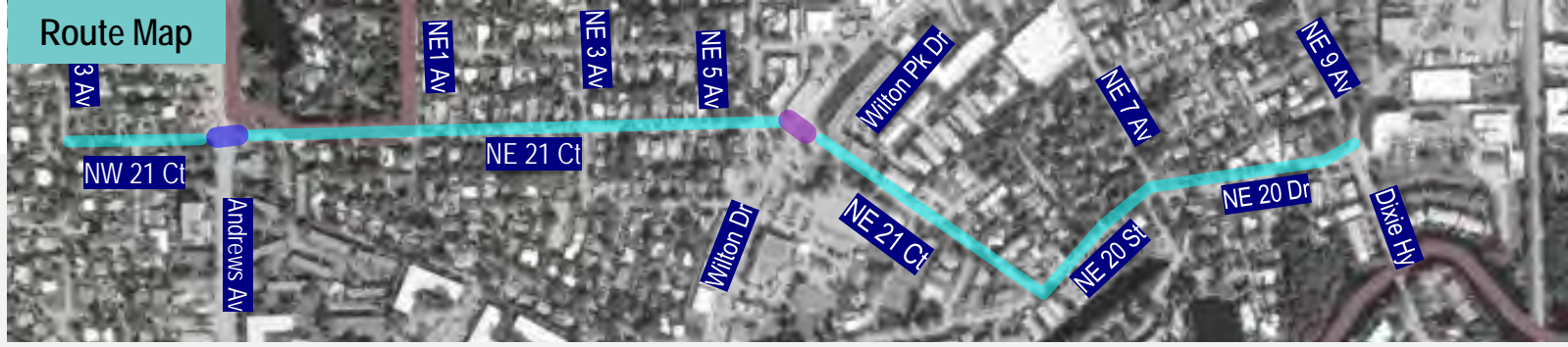
QUESTION: Additional existing conditions or issues for this roadway?

Summary of Existing Issues		
	Speeding vehicles	
X	Missing bicycle facilities: No bike facilities for entire route except along Wilton Dr	Bicyclists riding on sidewalks
X	Bicyclists riding against traffic	
X	No sidewalks on either side of roadway: (1) Between NE 5 Av and NE 6 Av, (2) NE 7 Av, (3) NE 22 Dr, (4) NE 11 Av, (5) City-owned Parking Lot, and (5) between NE 15 Av and NE 17 Te	
X	Narrow sidewalks	
X	Sidewalk Obstructions	X Sidewalk: At-grade sidewalks abutting back-out parking from Andrews Av to NE 1 Av, and along NE 6 Av

X	Long block length to cross to other side of street: Local road intersections have no marked crosswalks; NE 24 St from Dixie Hy to NE 15 Av
X	Pedestrians crossing not at crosswalks
X	Long crossing distance at crosswalks: Wilton Dr @ NE 6 Av; NE 24 St @ Dixie Hy; NE 24 St at NE 15 Av
X	Pedestrian / Vehicle conflicts at crosswalks: Wilton Dr @ NE 6 Av; NE 24 St @ Dixie Hy; NE 24 St at NE 15 Av
X	Insufficient crossing time for crosswalks: Wilton Dr @ NE 6 Av; NE 24 St @ Dixie Hy; NE 24 St at NE 15 Av
X	Dark at night, especially for pedestrians
X	Access Management issues: Back-In Parking; On-street parking
X	No wayfinding signage
	No school crossing signage or pavement markings for adjacent K-12 Schools

NW / NE 21 Ct Route

- Route extends from NW 3 Av to NE 20 St, and then continues east to Dixie Highway
- Route crosses over Andrews Av (County-owned) and Wilton Dr (FDOT-owned)
- Bike LTS: 1, except Crossing at Andrews Av = 4
- Ped LTS: Crossing at Andrews Av = 3, Crossing at Wilton Dr = 2, Crossing at Dixie Hwy = 3

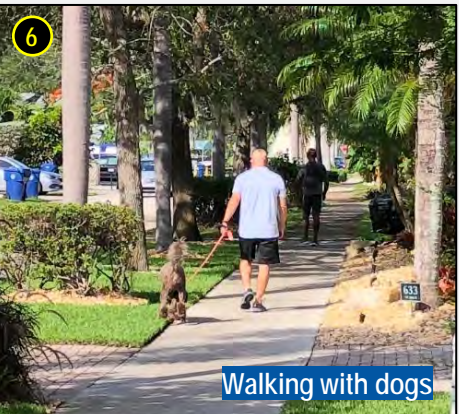
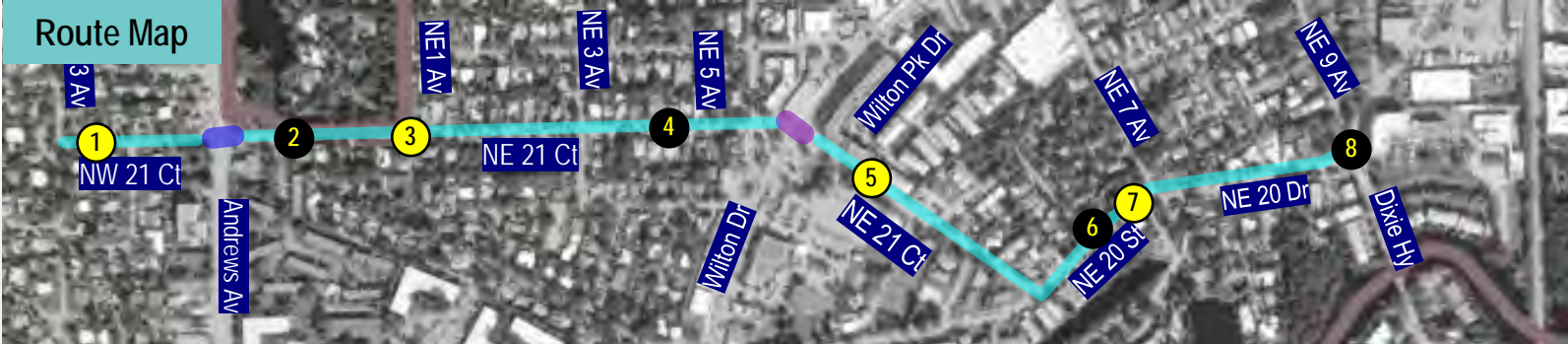


Summary of Existing Issues			
X	Speeding vehicles		
X	Missing bicycle facilities	X	Bicyclists riding on sidewalks
X	Bicyclists riding against traffic		
X	No sidewalks on either side of roadway: West of Andrews Av		
X	Narrow sidewalks		
	Sidewalk Obstructions	X	Sidewalk: Zig-zag sidewalks east / west of Andrews Av and east / west of NE 1 Av
X	Long block length to cross to other side of street: Wilton Dr to NE 20 St; NE 21 Ct to Dixie Hwy because no marked crosswalks at NE 7 Av		

X	Pedestrians crossing not at crosswalks: East of Andrews Av; City Hall Parking Lot, Ped entrance to Hagen Park (East of volleyball court)
X	Long crossing distance at crosswalks: Intersection at Andrews Av, Intersection at Dixie Hwy
X	Pedestrian / Vehicle conflicts at crosswalks: Intersections at Andrews Av, Wilton Dr, and Dixie Hwy
X	Insufficient crossing time for crosswalks: Intersections at Andrews Av, Wilton Dr, and Dixie Hwy
X	Dark at night, especially for pedestrians
X	Intersection Operations: No dedicated Left Turn Phase at Andrews Av
X	No wayfinding signage
	No school crossing signage or pavement markings for adjacent K-12 Schools

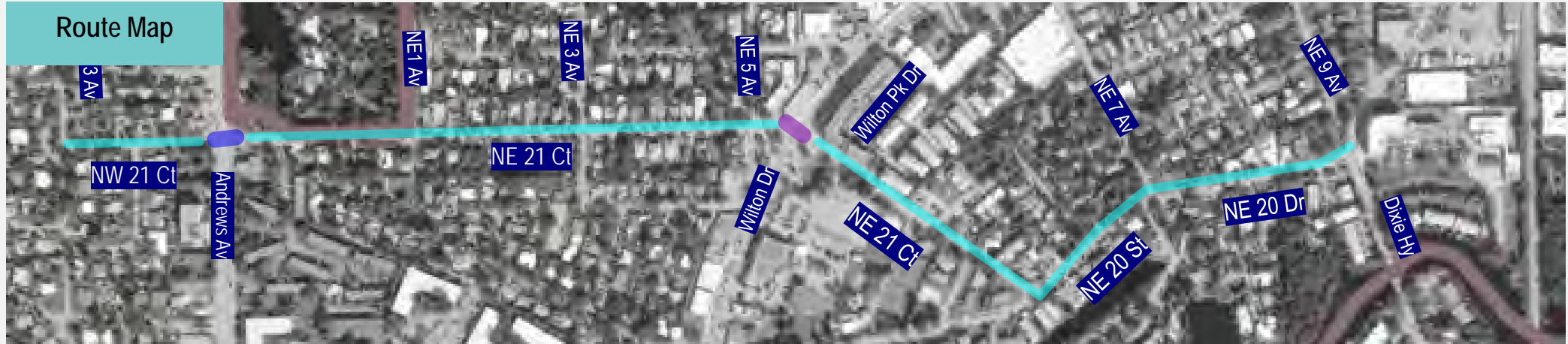
	East or South Sidewalk Only
	West or North Sidewalk Only
	Sidewalks on Both Sides
	East-West Crosswalk
	North-South Crosswalk

NW / NE 21 Ct Route



NW / NE 21 Ct Route

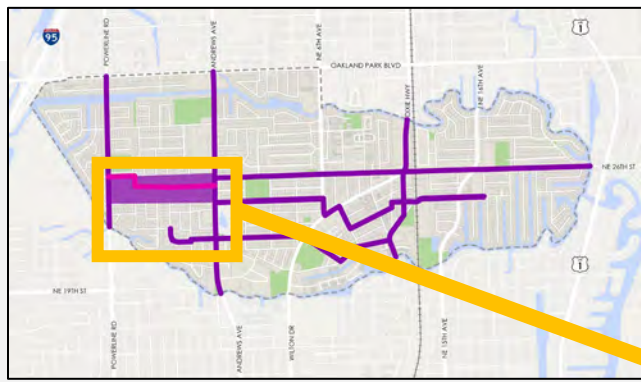
Discussion



QUESTION: Additional existing conditions or issues for this roadway?

Summary of Existing Issues			
X	Speeding vehicles		
X	Missing bicycle facilities	X	Bicyclists riding on sidewalks
X	Bicyclists riding against traffic		
X	No sidewalks on either side of roadway: West of Andrews Av		
X	Narrow sidewalks		
	Sidewalk Obstructions	X	Sidewalk: Zig-zag sidewalks east / west of Andrews Av and east / west of NE 1 Av
X	Long block length to cross to other side of street: Wilton Dr to NE 20 St ; NE 21 Ct to Dixie Hy because no marked crosswalks at NE 7 Av		
X	Pedestrians crossing not at crosswalks: East of Andrews Av ; City Hall Parking Lot , Ped entrance to Hagen Park (East of volleyball court)		
X	Long crossing distance at crosswalks: Intersection at Andrews Av , Intersection at Dixie Hwy		
X	Pedestrian / Vehicle conflicts at crosswalks: Intersections at Andrews Av , Wilton Dr , and Dixie Hwy		
X	Insufficient crossing time for crosswalks: Intersections at Andrews Av , Wilton Dr , and Dixie Hwy		
X	Dark at night, especially for pedestrians		
X	Intersection Operations: No dedicated Left Turn Phase at Andrews Av		
X	No wayfinding signage		
	No school crossing signage or pavement markings for adjacent K-12 Schools		

Westside Route Options



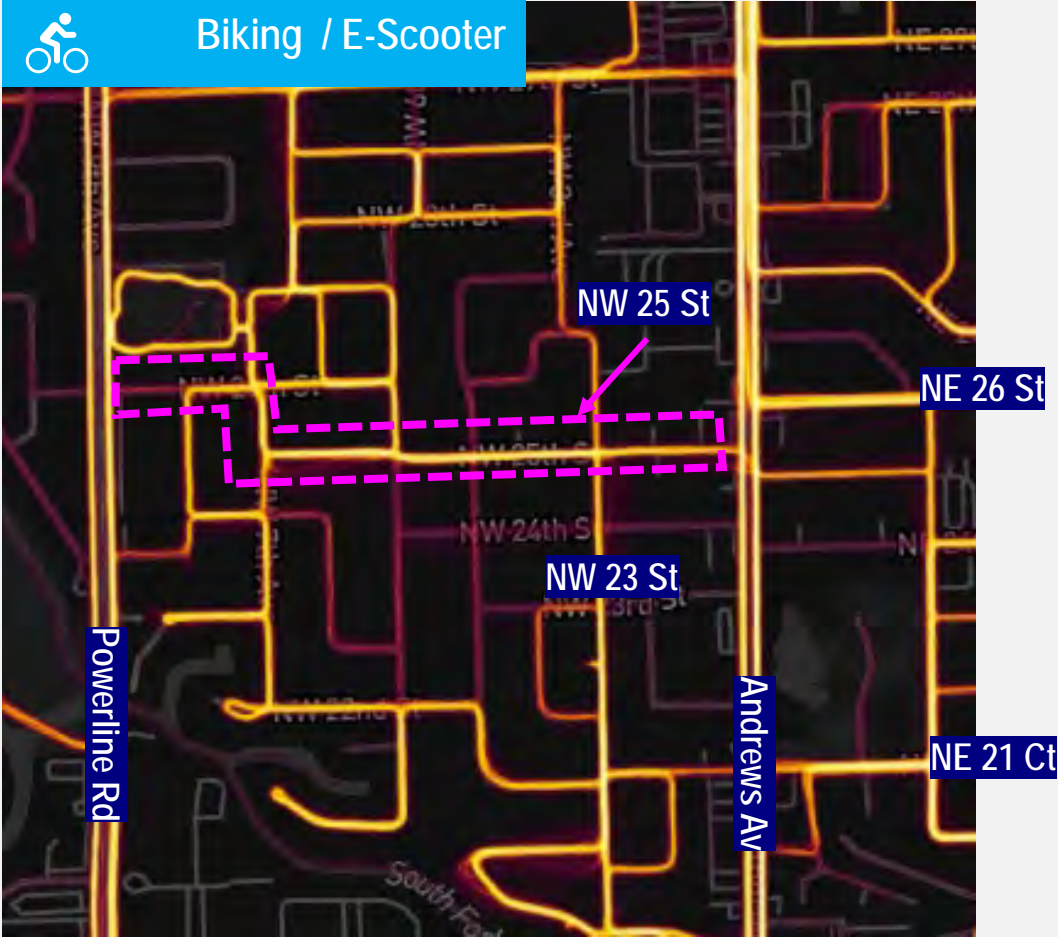
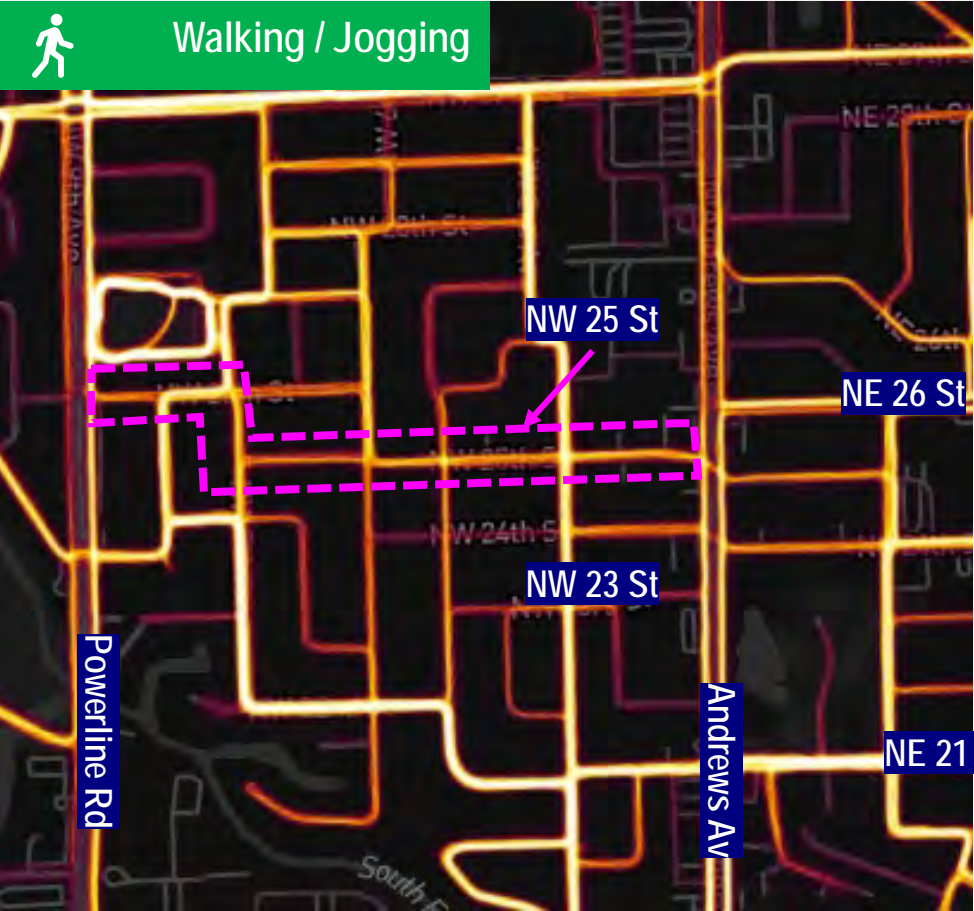
- **Strava** shows most bike activity from Powerline Rd to Andrews Av occurs using the following route:
NW 26 St → NW 7 Av → NW 25 St

- ✓ This is the most direct route to NE 26 St (future crosswalk) which also shows higher bike activity than other east-west routes
- ✓ Existing traffic calming on NW 26 St & NW 25 St helps reduce vehicle speeds and increase the comfort of cyclists

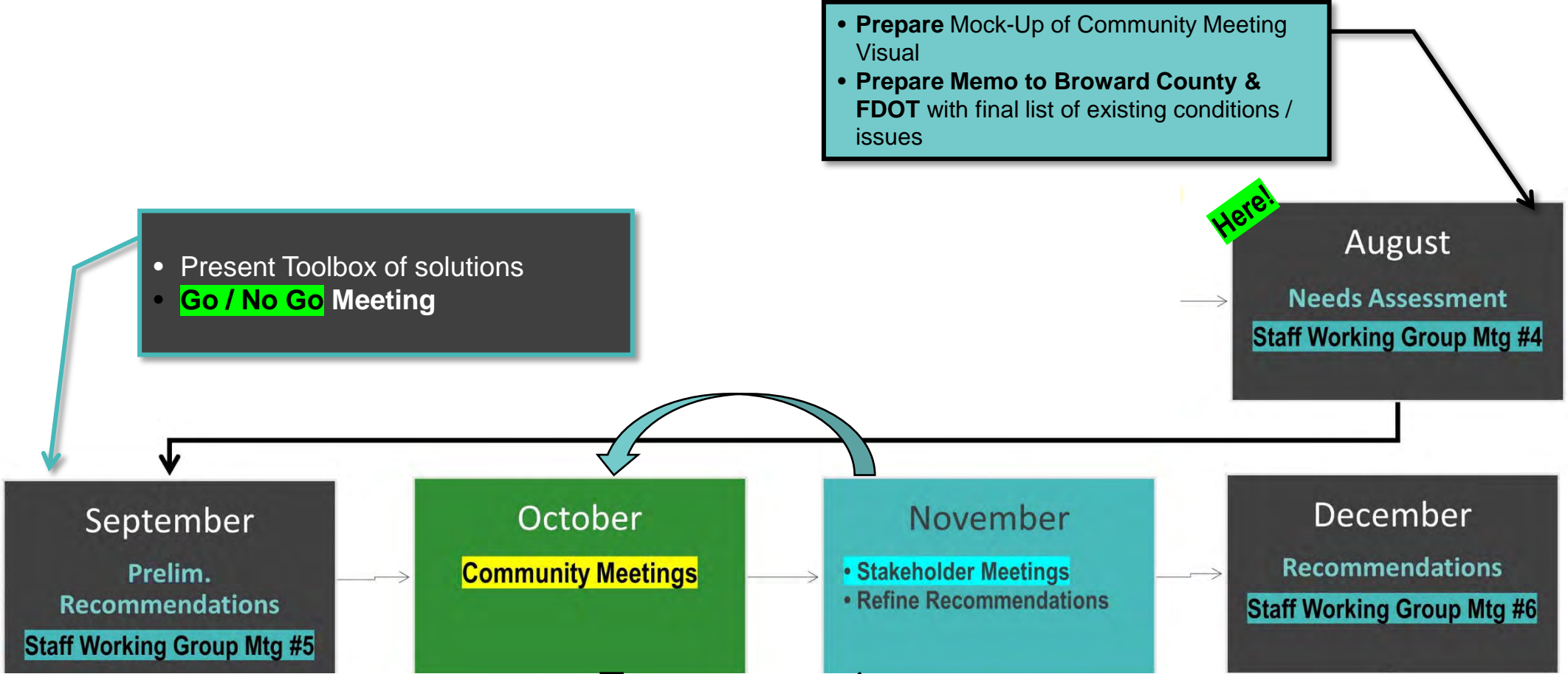


Westside Route Options

Strava Heat Maps:
July 2022 – June 2023



Project Schedule: Next Steps



- **Prepare** Mock-Up of Community Meeting Visual
- **Prepare Memo to Broward County & FDOT** with final list of existing conditions / issues

- Present Toolbox of solutions
- **Go / No Go Meeting**

Here!

- City Action items**
1. Review Memo to Broward County & FDOT
 2. Schedule Community Meeting(s)
 3. Determine Westside Neighborhood Route



Transportation Master Plan

NE 24 St Route & NW/NE 21 Ct Route

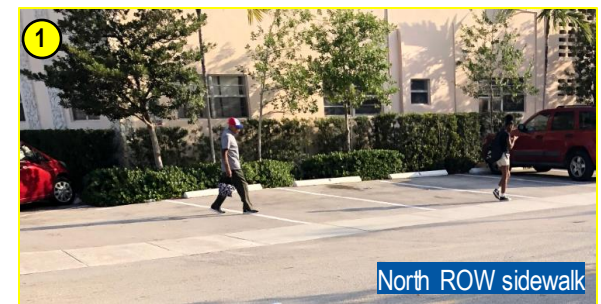
Observations from Field Audits

NE 24 St Route Observations (1): Andrews Av to NE 6 Av

2 Intersection at NE 1 Av: WME Student drop-off / pick-up on NE 24 St & NE 1 Av ● School Speed Zone ● All way stop ● NE 1 Av is NB only between NE 26 St and NE 24 St ● Special emphasis crosswalk markings over north and east legs (no other marked crosswalks) ● Ped's crossing from church parking lot to WME (approx. 100 ft east of NE 1 Av) ● School bus stop at NE corner



1 Andrews Av to NE 1 Av: Ped route to WME / K-12 students ● North ROW = At-grade sidewalk abutting back-out parking (cars obstructing sidewalk) ● South ROW = No Sidewalk ● No Ped-Scale lighting ● School speed zone ends approx. 125 ft west of Andrews Av



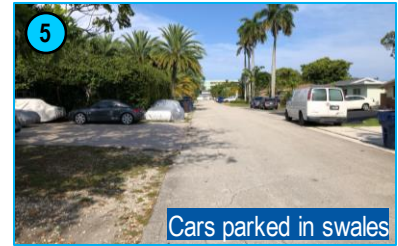
3 Intersection at NE 3 Av: Cars queue for WME pick-up (extends east of NE 3 Av) ● School Speed Zone ● NE 3 Av is SB only between NE 26 St & NE 24 St ● Special emphasis crosswalk markings over north leg (no other marked crosswalks) ● No sidewalk in south ROW east and west of intersection



4 Intersection at NE 5 Av: No crosswalks ● No sidewalks east of NE 5 Av ● 2-way stop: only for E/W traffic ● Streetlight faces NE 5 Av (3 No Injury crash at this intersection from 2018 to 2020 all involved N/S car hitting E/ W car)



5 NE 3 Av to NE 5 Av: No sidewalks ● Cars / landscaping obstructing swales ● No street lighting ● Ped's / bikes share roadway

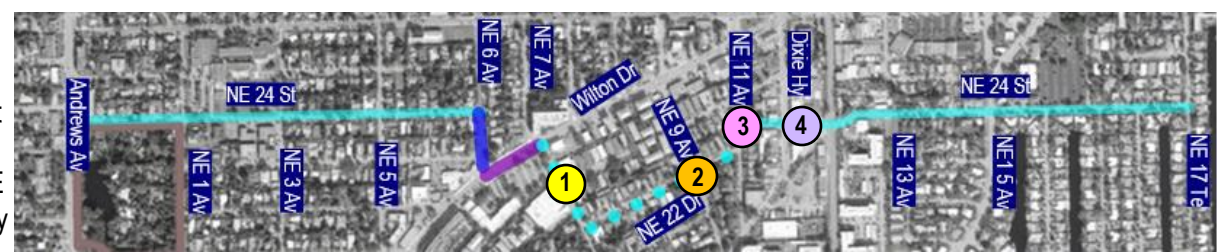


6 Intersection at NE 6 Av: No marked crosswalk ● No lighting at intersection (streetlights only on east ROW of NE 6 Av)

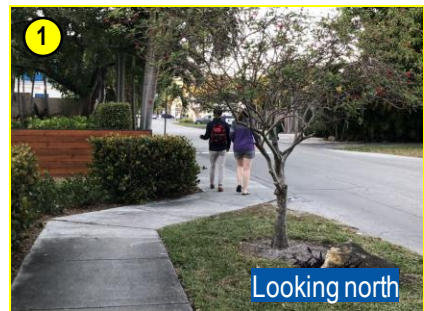


NW/NE 24 St Route Observations (2): NE 7 Av to Dixie Hwy

2 NE 22 Dr: Local roadway with no sidewalks except in front of townhouses at SW corner of NE 9 Av ● No crosswalks at NE 7 Av or at NE 11 Av ● Roadway ends at NE 11 Av



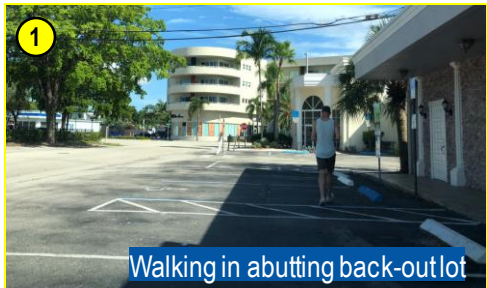
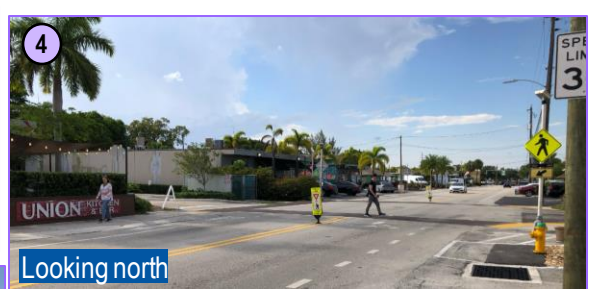
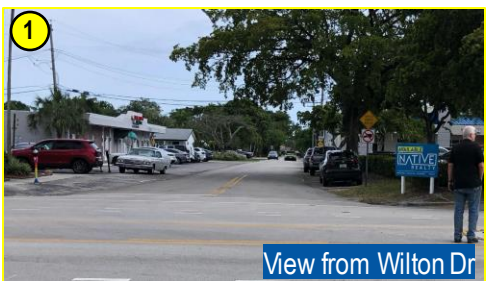
1 NE 7 Av : East ROW: No sidewalk & back-out parking ● West ROW: Missing sidewalk segments (including on-street parking), portion of sidewalk directly abuts wall ● No marked crosswalks over side streets or large driveways ● No marked crossings between Wilton Dr and NE 20 Dr ● No bike facilities ● No ped-scale lighting



3 NE 11 Av entrance to Union parking lot: Ped-only entrance ● No crosswalk over NE 11 Av ● No sidewalks leading to entrance walkway ● No ped-scale lighting



4 Dixie Hwy: Intersection with 2-way stop (east/west only) ● Raised crosswalks stamped concrete pavers ● RRFBs for crossing over Dixie Hwy, but on one side only (RRFB in SE corner facing NB traffic / RRFB in NW corner facing SB traffic) ● Bike lanes on Dixie Hwy are not marked in intersection ● No sidewalk in east ROW Dixie Hwy, south of intersection ● West of intersection is Union parking lot ● No sidewalk in parking lot ● No sidewalk in south ROW NE 24 St, east of intersection ● Hedges at NW corner obstruct view leaving Union parking lot

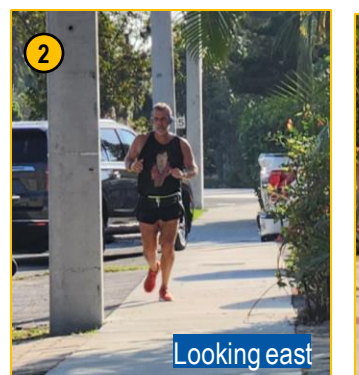
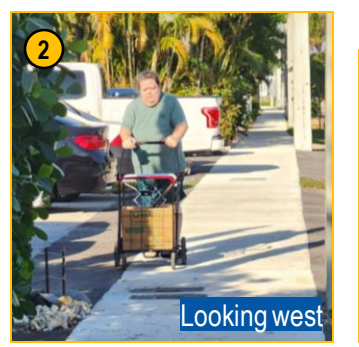


NW/NE 24 St Route Observations (3): FEC to NE 16 Av

2 East of FEC mid-block area: North ROW - no sidewalk ● NE 13 Av is one-way NB (no turns from NE 24 St permitted) ● Speedhumps ● Sidewalk in front of Metropolitan includes stamped concrete, benches, and decorative streetlights ● A lot of pedestrian activity incl. exercising and walking dogs ● Most pedestrians using sidewalk ● Some ped's (and biking) in roadway.



1 FEC Crossing: North ROW - Sidewalk west of FEC crossing only (continues to Dixie Hwy) ● South ROW - Sidewalk east of FEC crossing only (continues to NE 15 Av) ● No bike lanes on roadway ● Ped-Scale lighting in south ROW just east of crossing



3 Intersection at NE 15 Av: New raised intersection ● Stamped concrete pavers crosswalks ● No marked bicycle facilities at intersection ● Many ped's observed walking dogs ● RRFB's for crossing over NE 15 Av, but on one side only (RRFB in SE corner facing NB traffic / RRFB in NW corner facing SB traffic) ● No ped-scale lighting at intersection

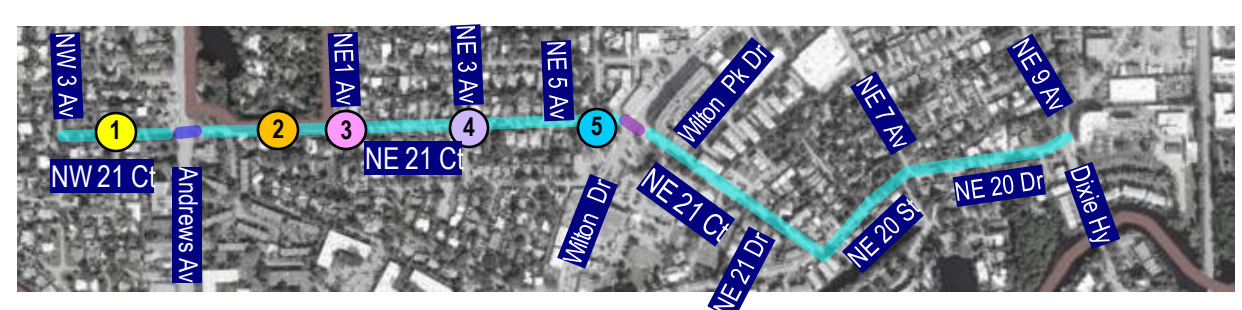


4 East of NE 15 Av: Except in front of new development, no sidewalks along entire roadway ● No crosswalks at intersections or over side streets



NW/NE 21 Ct Route Observations (1): NW 3 Av to NE 5 Av

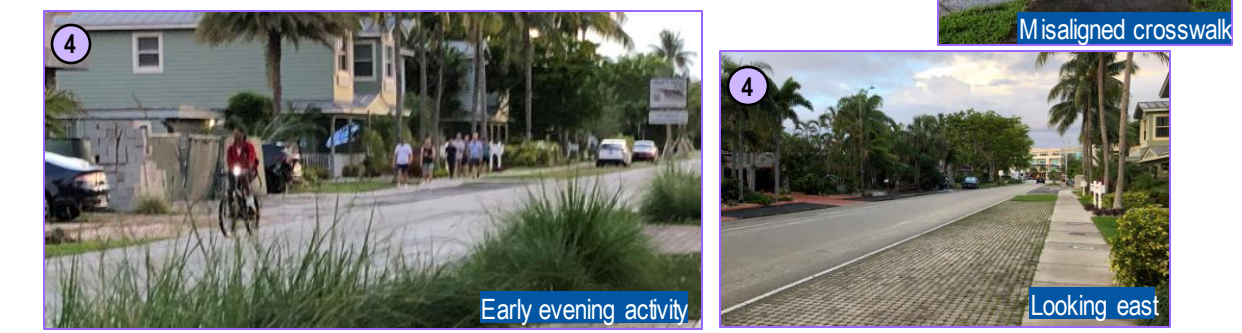
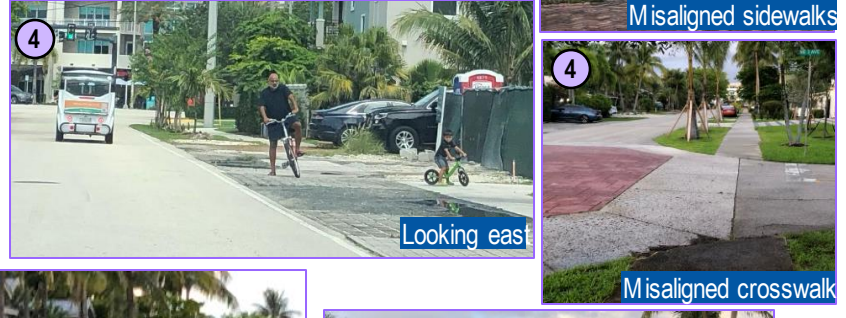
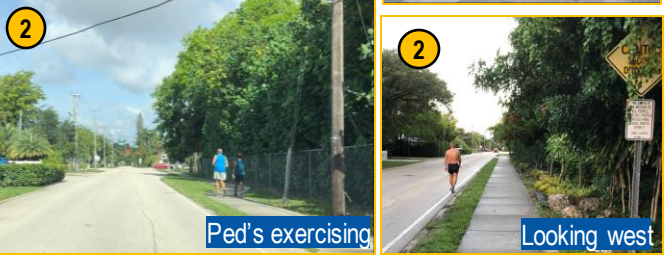
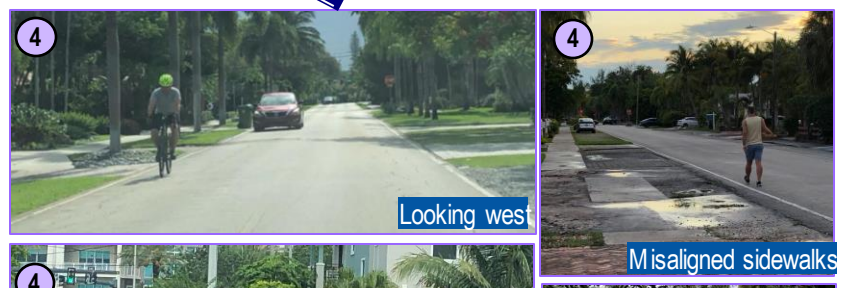
2 Andrews Av to NE 1 Av: South ROW: no sidewalk between Andrews Av and 100 ft west of NE 1 Av ● No bike lanes ● Bicyclists riding in roadway ● Area Speed Hump signage ● AM & PM Ped activity, incl exercising & walking dogs ● No ped-scale lighting and minimal street lighting ● No crosswalks over side streets ● No wayfinding for Wilton Dr



1 Between NW 3 Av & Andrews Av: North ROW - No sidewalk ● South ROW - No sidewalk west of driveway to Moss Construction ● Ped's & bicyclists in roadway, incl riding against traffic ● NW 3 Av: All way stop / Off-set intersection ● No crosswalks at intersections or cross streets ● Speed humps



4 East / West of NE 3 Av: South ROW has continuous sidewalk ● North ROW - Sidewalks only in front of new development ● NE 3 Av: All-way stop, raised intersection, misaligned / sloped crossings, & no detectable warnings ● No ped-scale lights ● large groups of pedestrians in early evening ● Bicyclists riding in roadway



5 NE 5 Av: Special emphasis crosswalk markings over east leg (no other marked crosswalks) ● Pocket-park at Wilton Dr ● No ped-scale lighting

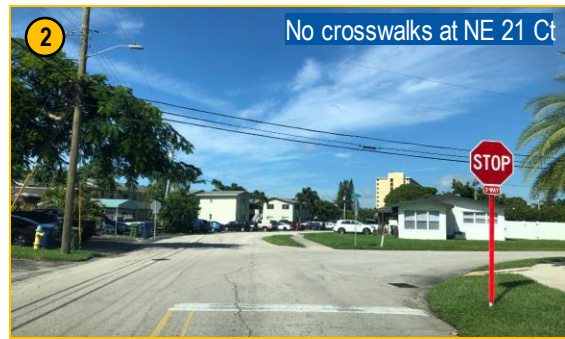
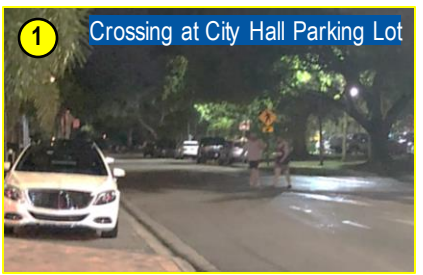


NW/NE 21 Ct Route Observations (2): Wilton Pk Dr to Dixie Hy

2 NE 21 Ct to NE 7 Av: No marked crosswalks over intersections or side streets ● No sidewalk in south ROW along NE 20 St ● Intersection at NE 7 Av is offset ● AM and PM ped-activity including exercising & frequent walking dogs ● Bicyclists riding both on sidewalk and in roadway, Pocket park located at NW corner of NW 7 Av; No ped-scale lighting and minimal street



1 East of Wilton Dr: All ped's observed crossing *not* at mid-block crosswalk adjacent to City Hall Parking Lot ● North ROW: continuous sidewalk ● South ROW: At grade sidewalk abutting on-street parking ends at ped-entrance to Hagen Park ● Hagen Park Ped-only entrance and Volleyball court directly at NE 21 Ct ● No dedicated ped-scale lighting ● No marked crosswalks over NE 22 Dr or NE 21 Dr



3 NE 20 Dr: No sidewalk in south ROW; Continuous sidewalk in north ROW ● Speed humps ● Only local roadway in general location with access to Dixie Hwy



4 Dixie Hwy: T-intersection with stamped concrete pavers, ped-crossing signage, and RRFB ● RRFB's for crossing over Dixie Hwy, on one side only (RRFB in SE corner facing NB traffic / RRFB in NW corner facing SB traffic) ● Observed near-miss ped crash ● No south sidewalk on NE 20 Dr; ● Ped-Only access to NE 9 Av at NW corner of intersection ● No Bike lanes through intersection; ● AM & PM Ped-Activity, including walking dogs.

