

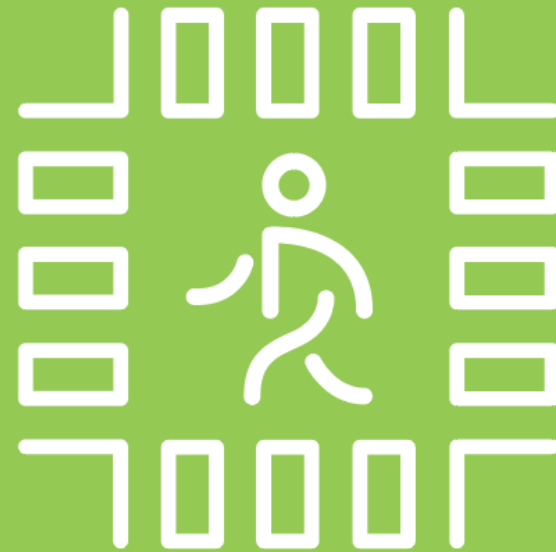
COMPLETE STREETS

Concept Development

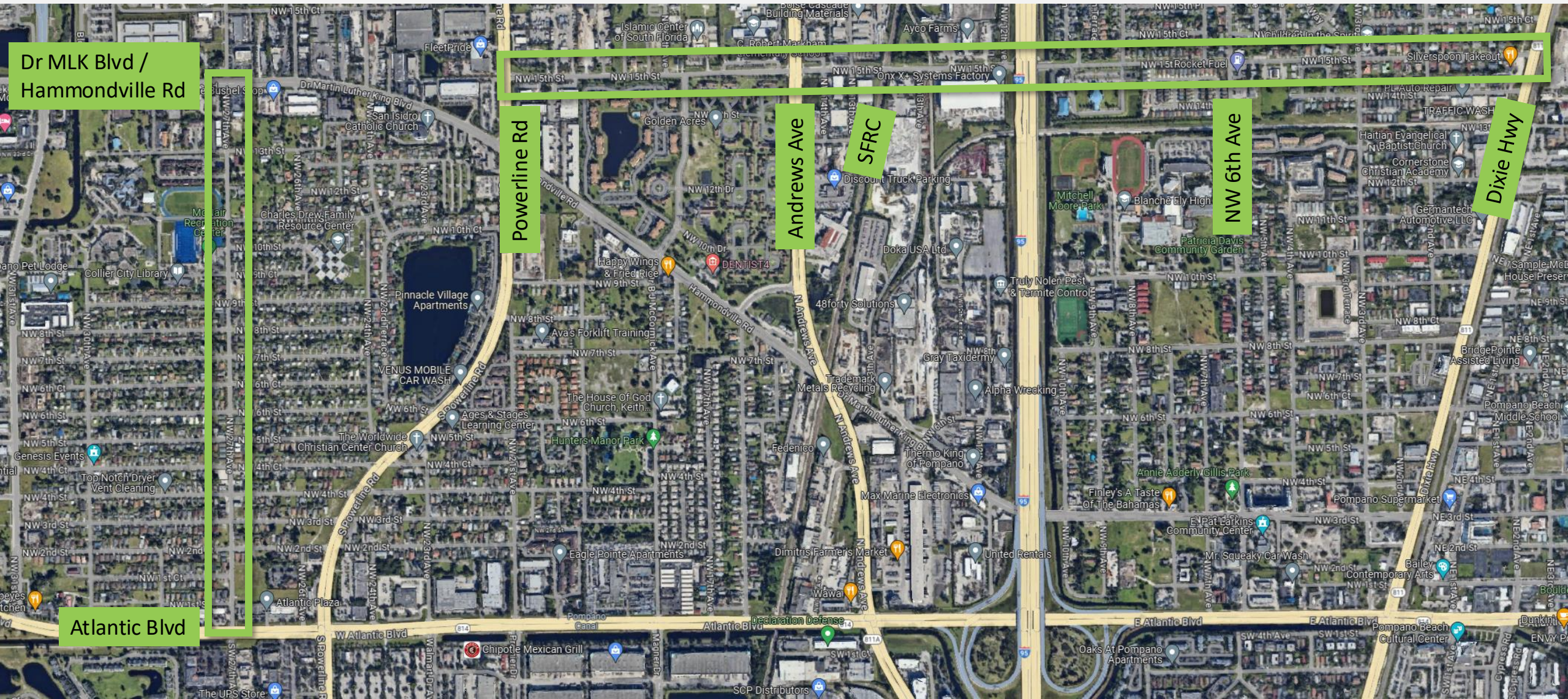


Agenda:

- **Overview**
- **NW 15th Street**
 - Existing Conditions
 - Goals and Objectives
 - Recommendations
 - Opportunities and Challenges
- **NW 27th Avenue**
 - Existing Conditions
 - Goals and Objectives
 - Recommendations
 - Opportunities and Challenges



NW 27 Ave & NW 15 St



Dr MLK Blvd /
Hammondville Rd

Powerline Rd

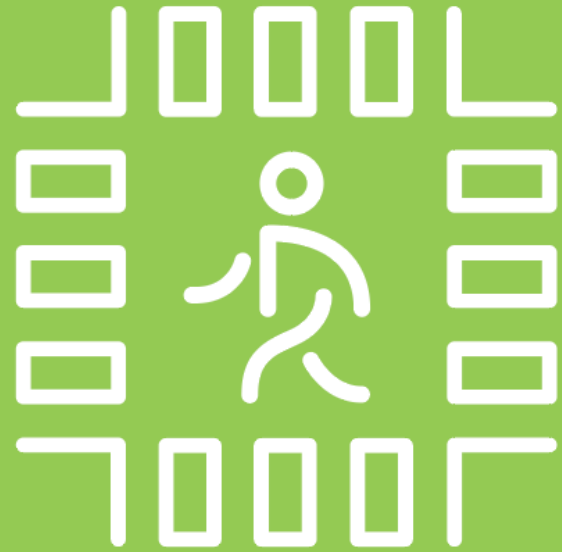
Andrews Ave

SFRC

NW 6th Ave

Dixie Hwy

Atlantic Blvd

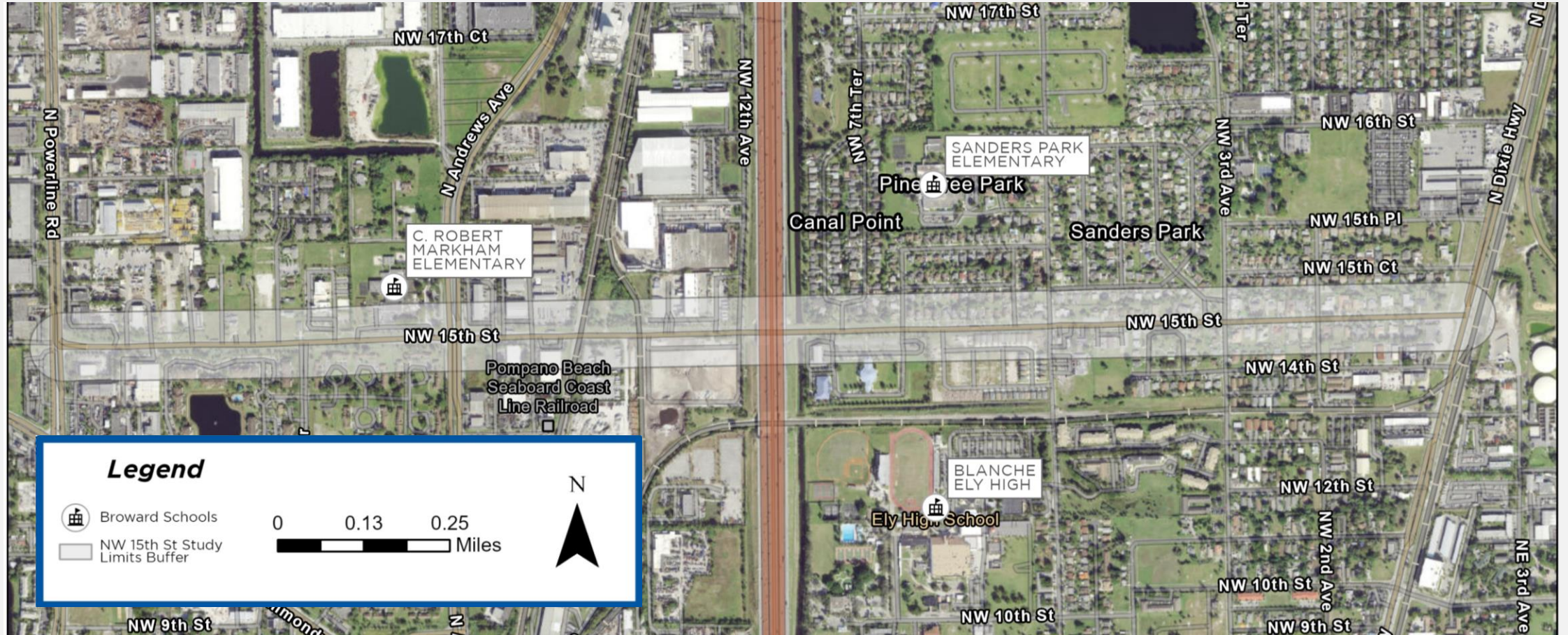


COMPLETE STREETS

NW 15th Street



NW 15th Street Corridor



NW 15th Street Corridor – Existing Conditions



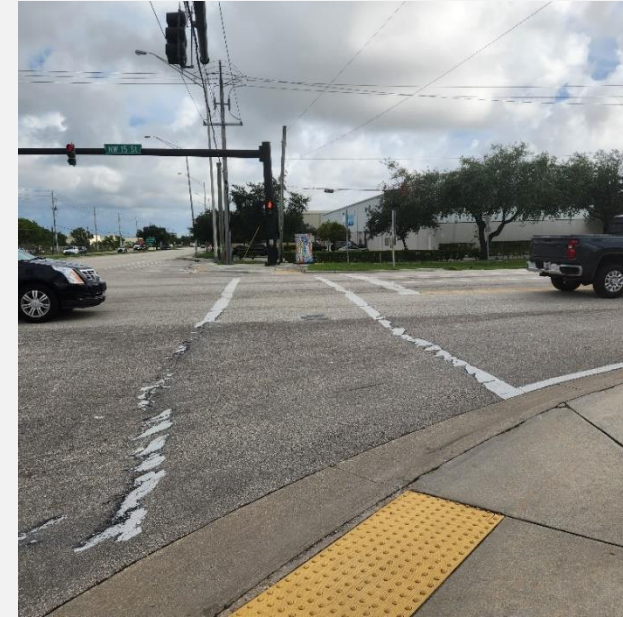
Faded Pedestrian Push Button Sign



Damaged Sidewalk



Damaged ADA Curb Ramp



Damaged pavement markings at Andrews Avenue intersection

Opportunities and Challenges

Opportunities

- Wide ROW space
 - Potential for sidewalks and separated bike lanes
- Safe Routes to School

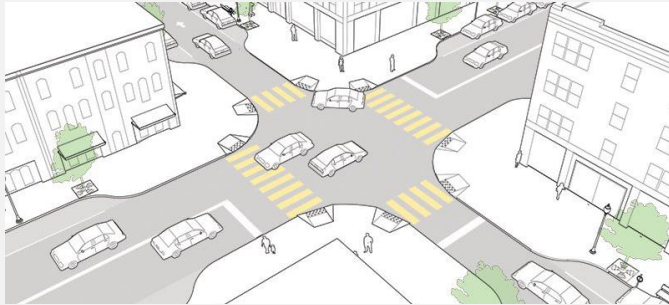
Challenges

- Utilities
 - Gas pipeline
 - Telecommunication cables
- Mixed of truck traffic and pedestrian/school traffic
- Potential difficulty of adjacent homeowners for south side sidewalk (east of NW 3rd Ave)

NW 15th Street Preliminary Proposed Improvements



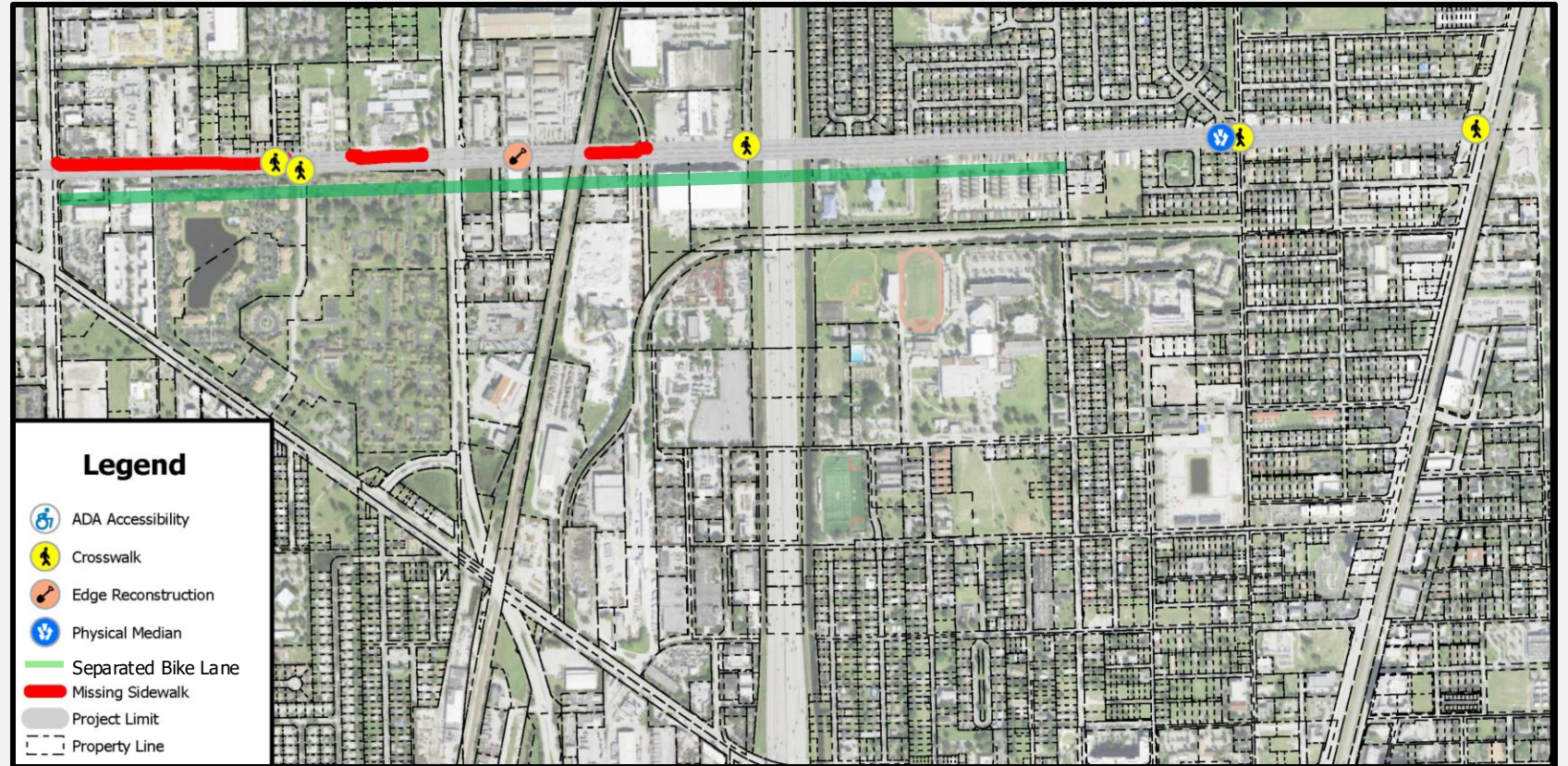
Install Special Emphasis Crosswalks



Physical Median/Ped Refuge



Separated Bike Lane west of NW 6th Ave – Sharrows east of NW 6th Ave



Goals and Objectives

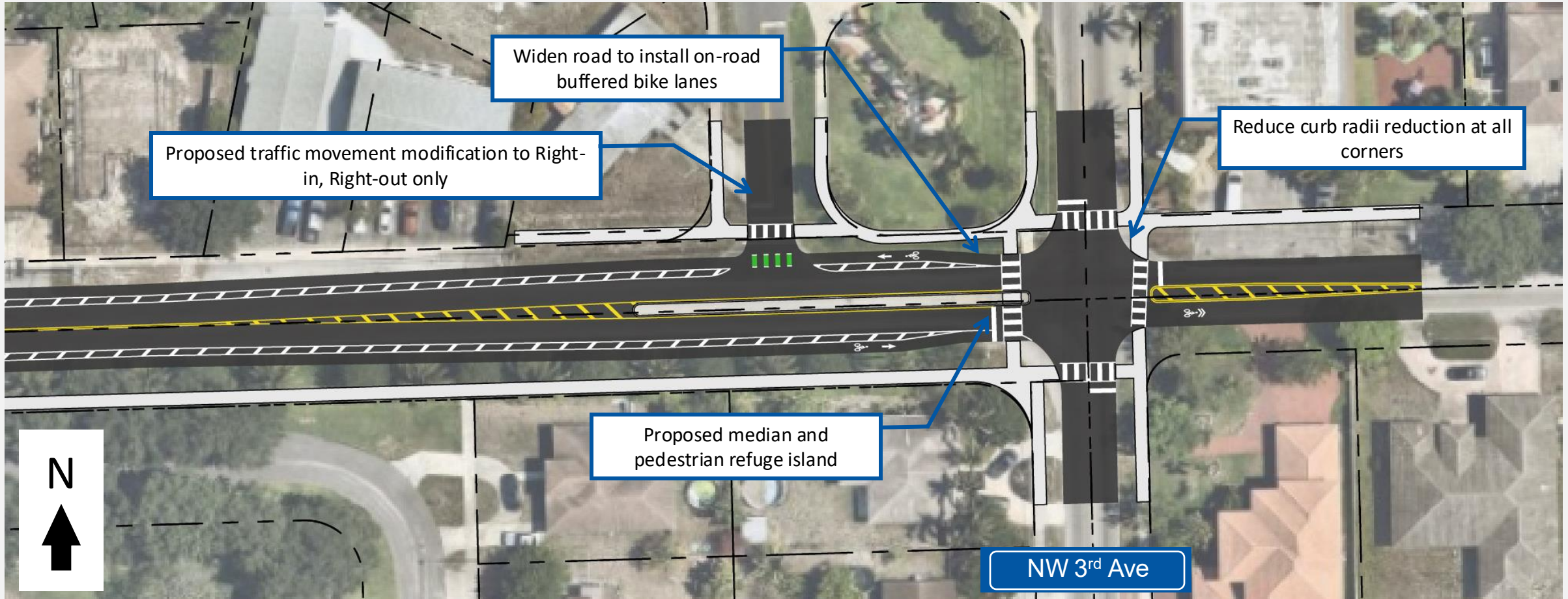
Connectivity and Safety Goal

Enhance safety and improve connectivity throughout the corridor to create a more accessible and secure environment for all users.

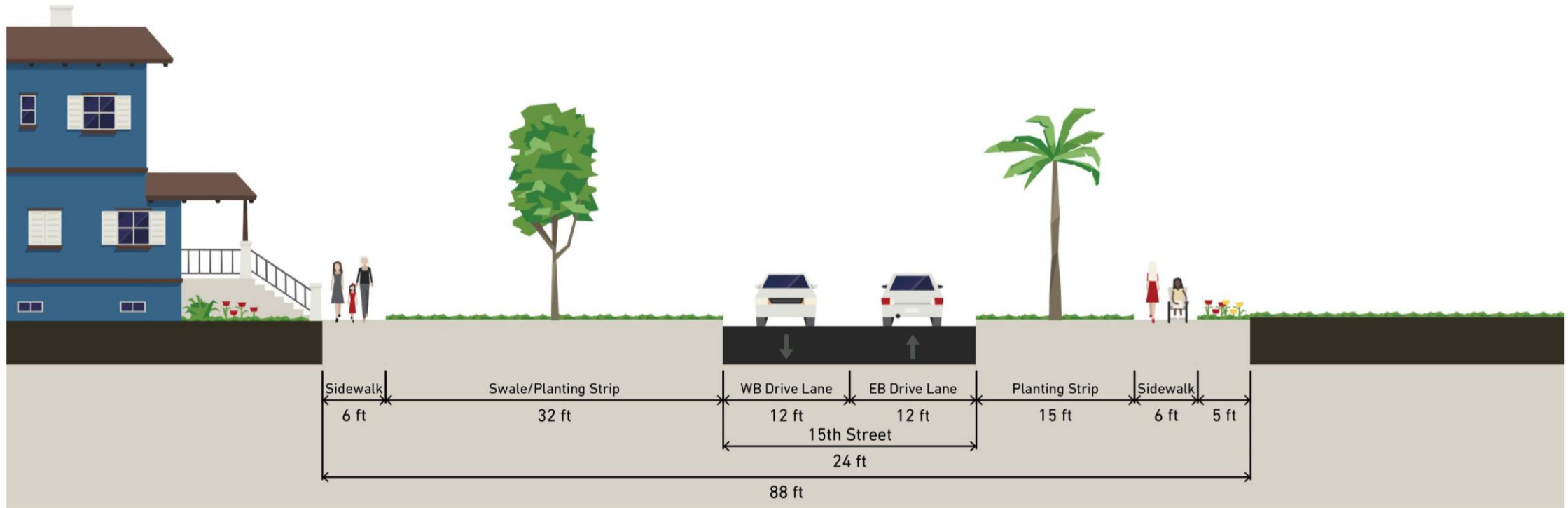
Objectives:

- Fill in sidewalk gaps.
- Install sharrow pavement markers and Bicycles May use Full Lane” signs.
- Install high-visibility special emphasis crosswalks at all major intersections
- Implement safe routes to school program
- Install medians and pedestrian refuge island at NW 3rd Avenue
- Install railroad crossing gates and warning signs at the FEC spur, located approximately 400 feet east of the FEC crossing.
- Install ADA-compliant curb ramps at all intersections.
- Reconstruct roadway’s edge between NW 14th Avenue and NW 13th Avenue.

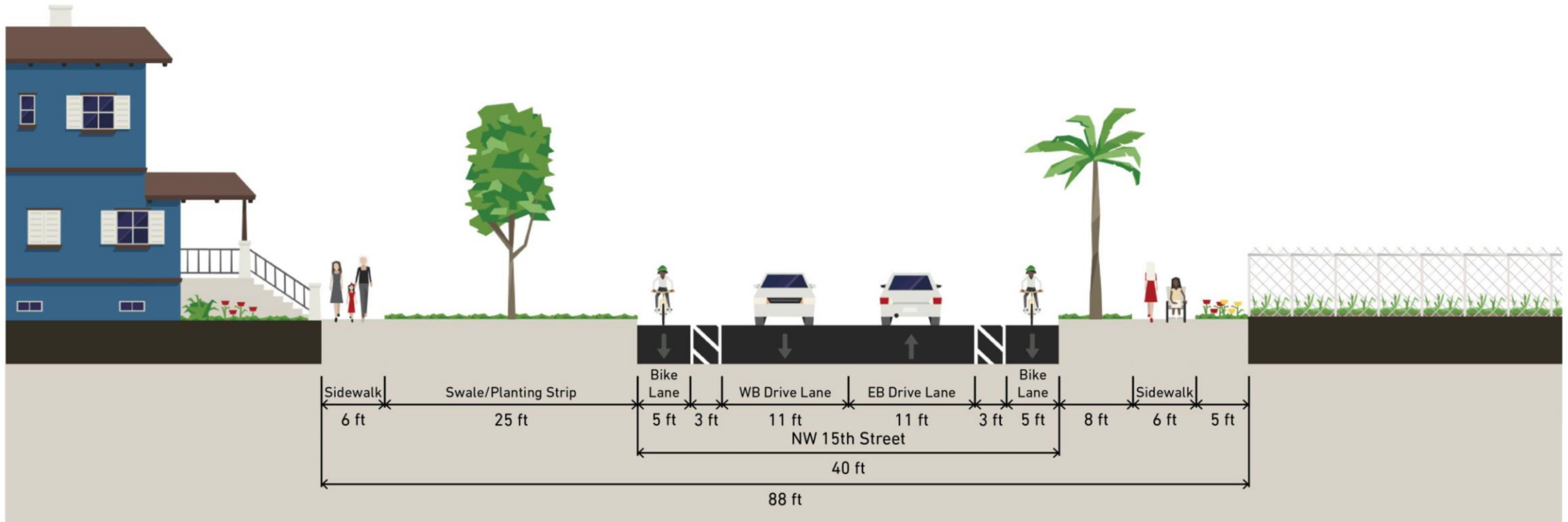
NW 15th St & NW 3rd Ave Proposed Concept



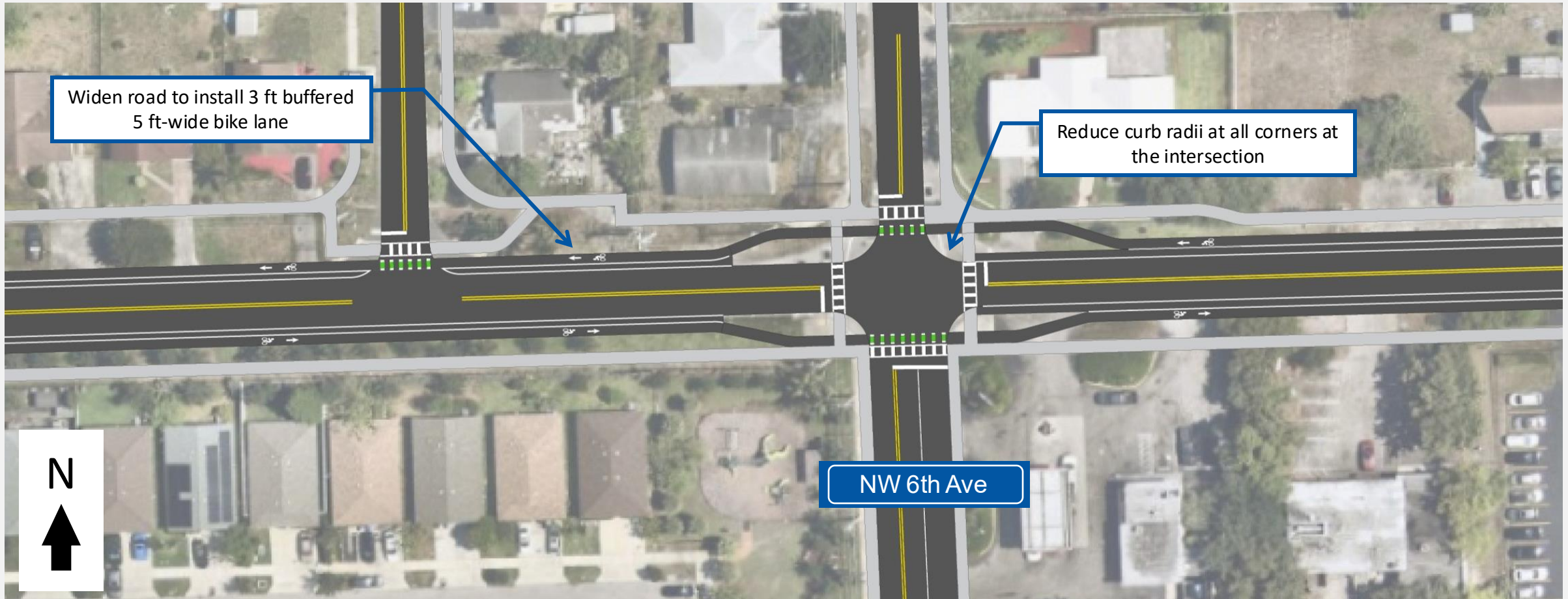
15th Street west of 6th Avenue Existing Typical Section



15th Street west of 6th Avenue Proposed Typical Section



NW 15th St & NW 6th Ave Proposed Concept



NW 15th St & NW 6th Ave Proposed Concept Render



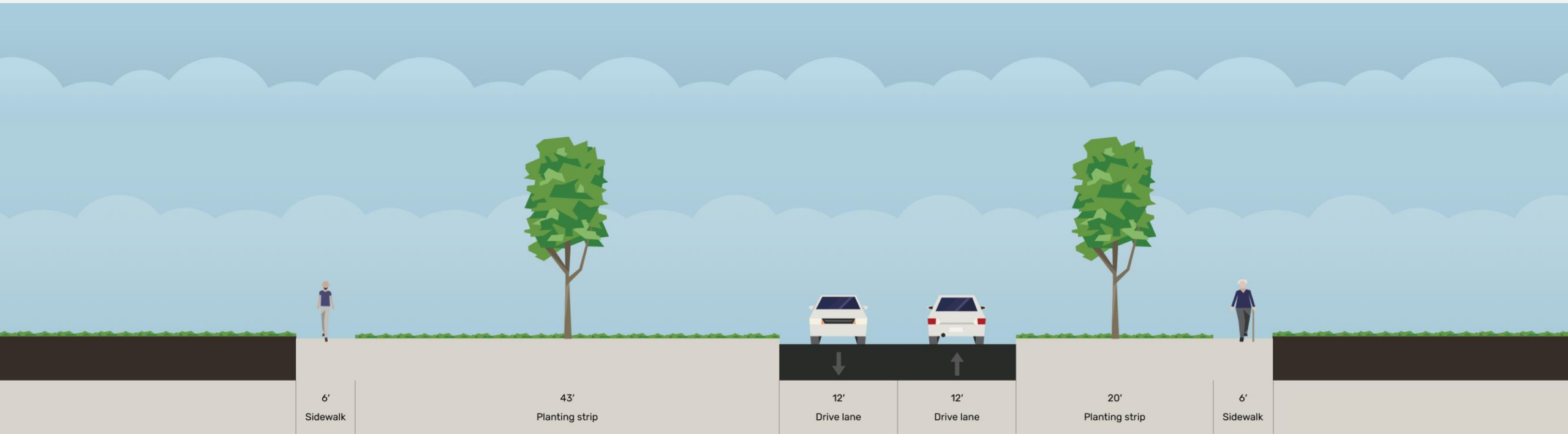
NW 15th St & NW 6th Ave Proposed Concept Render



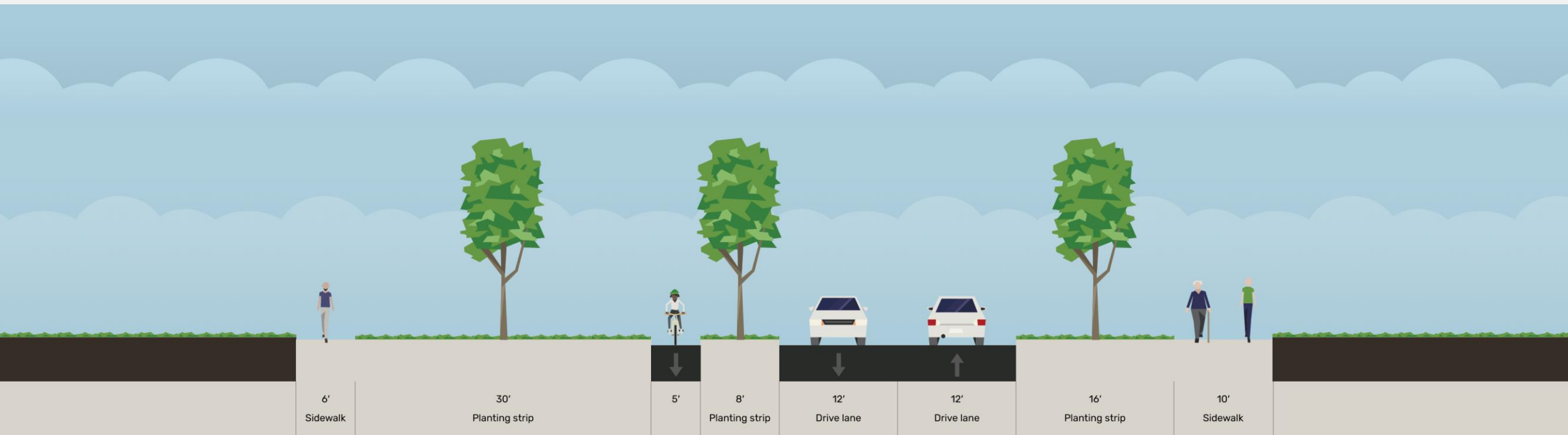
NW 15th St & NW 3rd Ave Proposed Concept



15th Street between NW 7th Ave & NW 7th Way Existing Typical Section



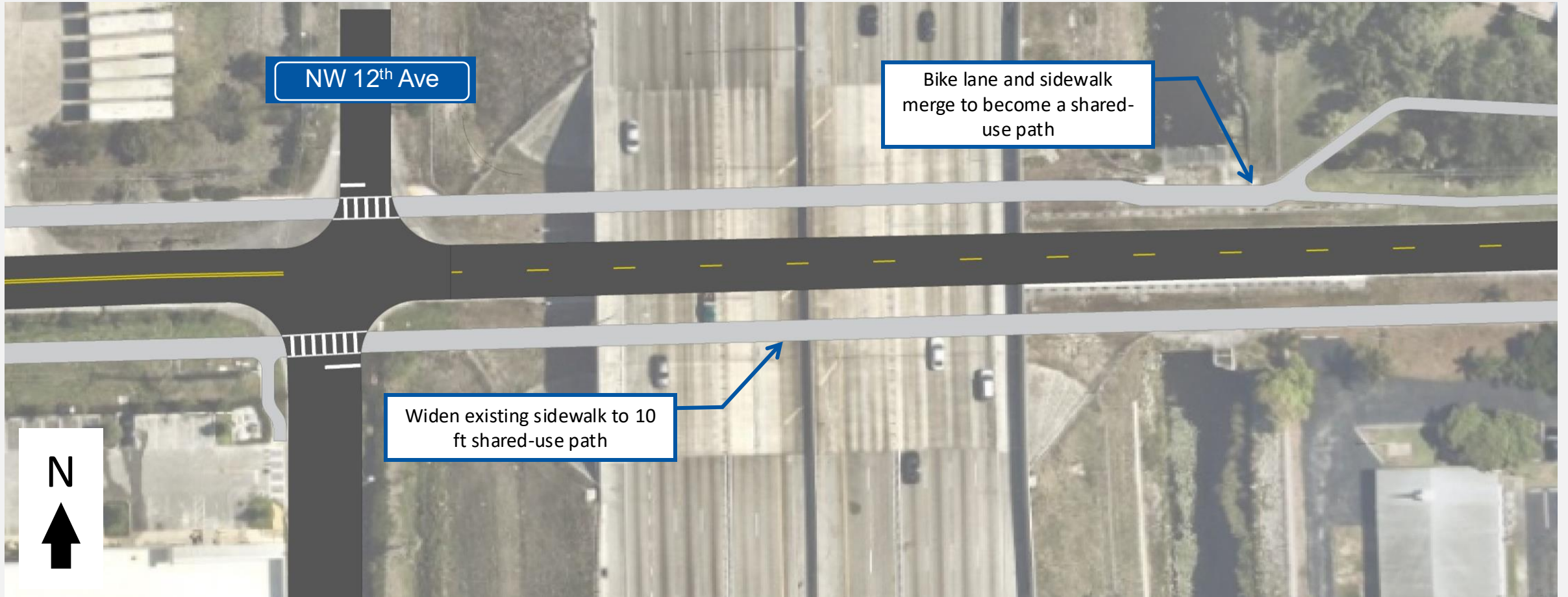
15th Street between NW 7th Ave & NW 7th Way Proposed Typical Section



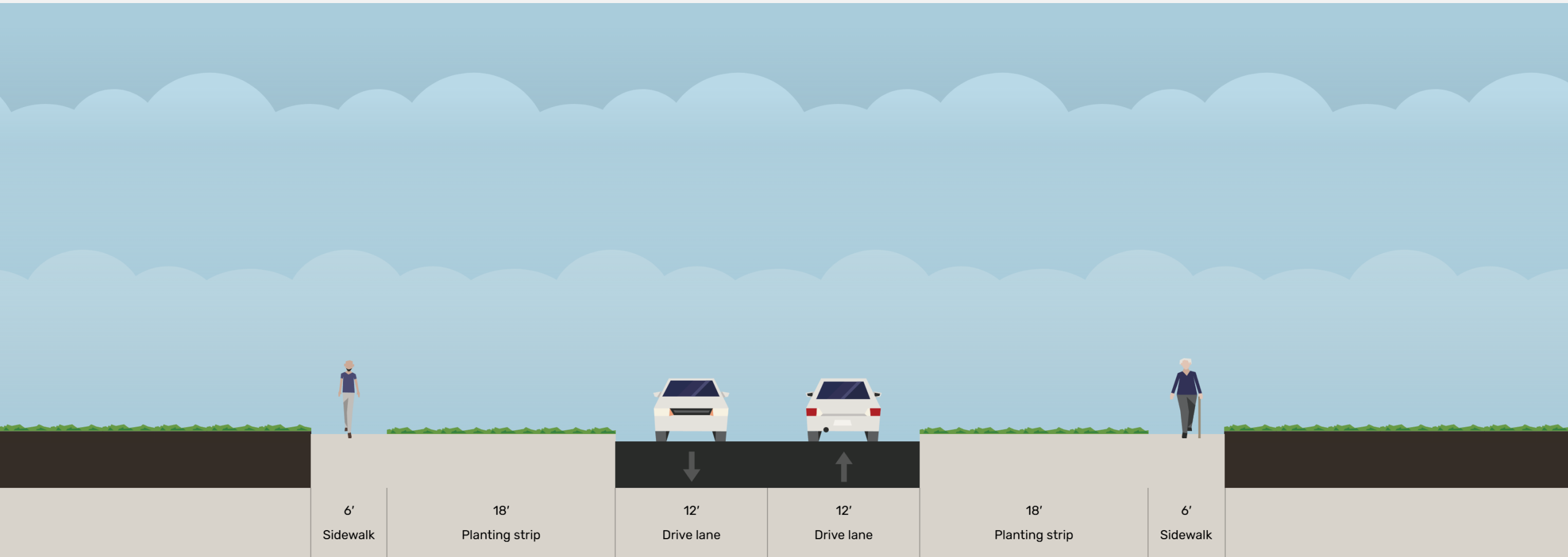
NW 15th St & I-95 Existing Conditions



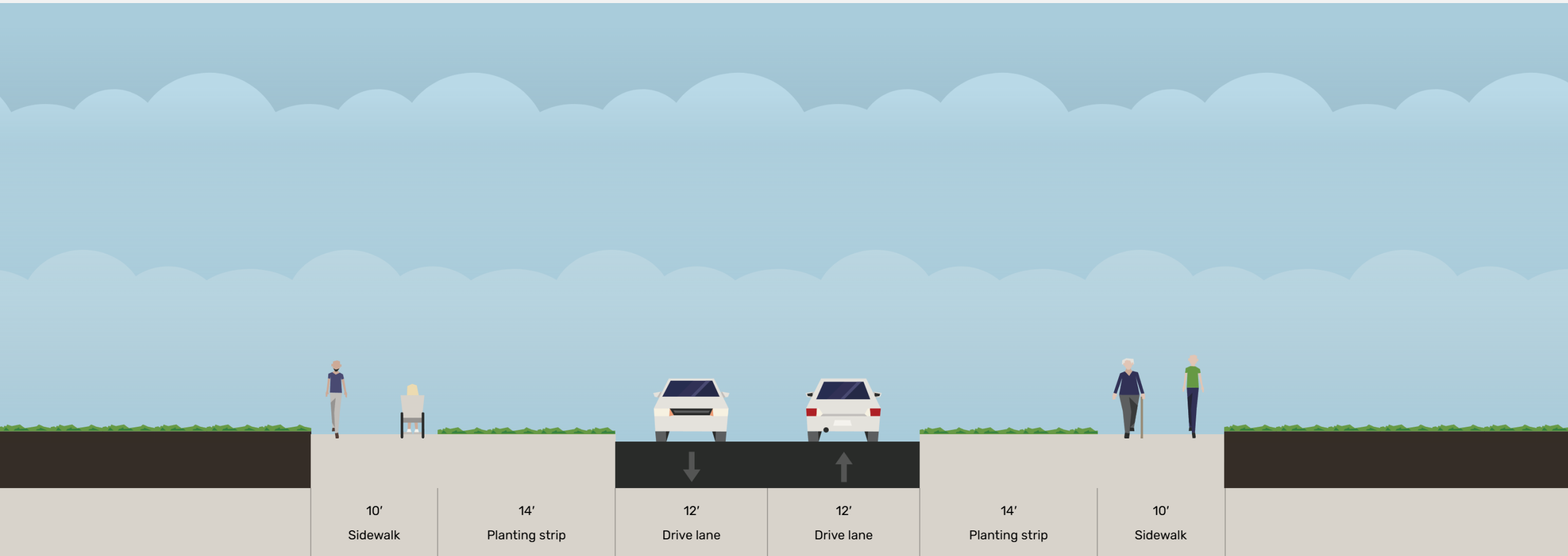
NW 15th St & I-95 Proposed Concept



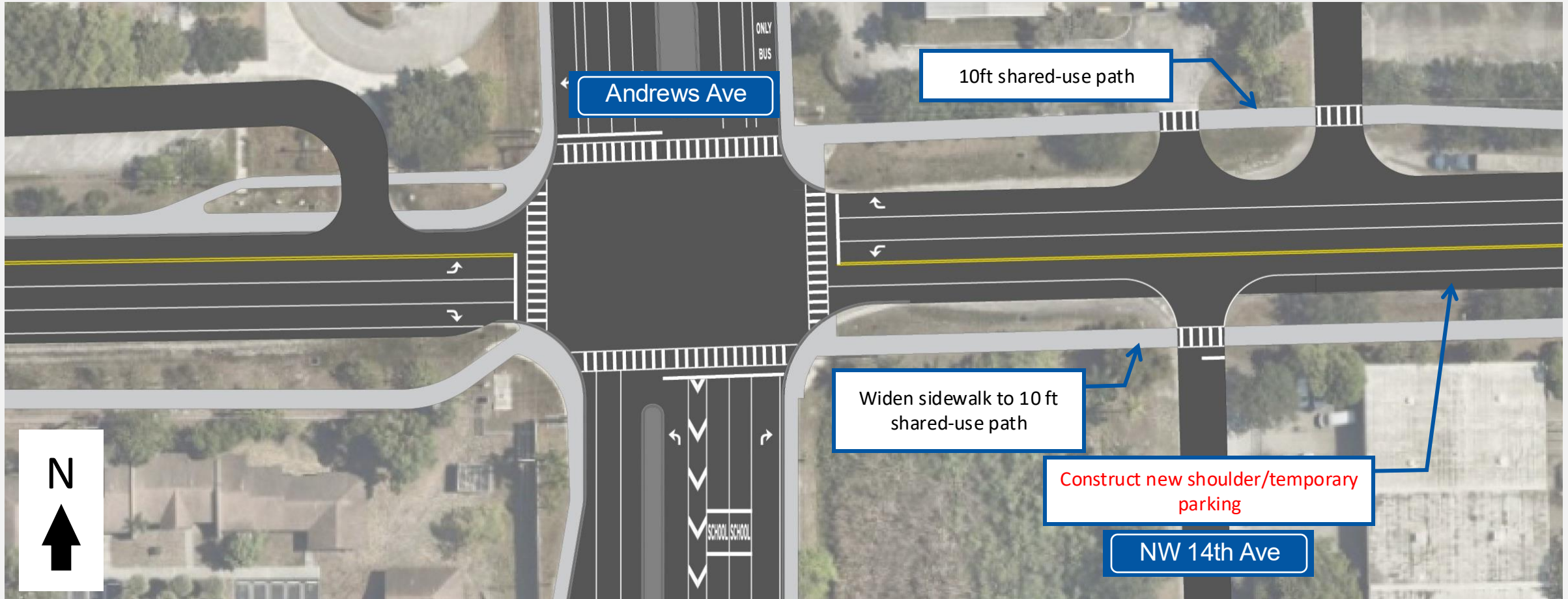
NW 15th St & I-95 Existing Typical Section



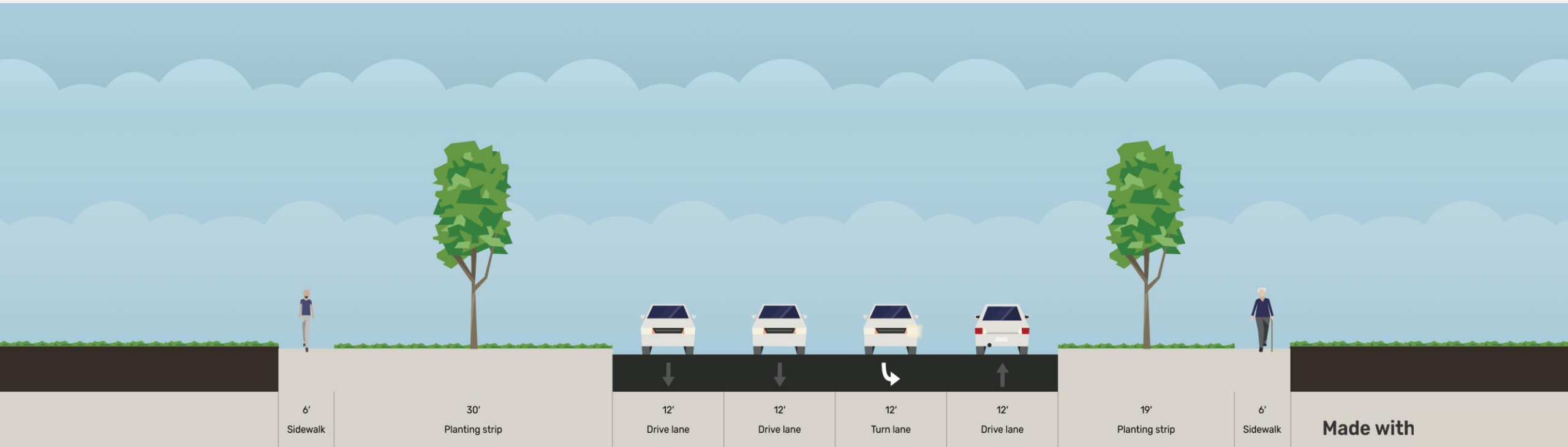
NW 15th St & I-95 Proposed Typical Section



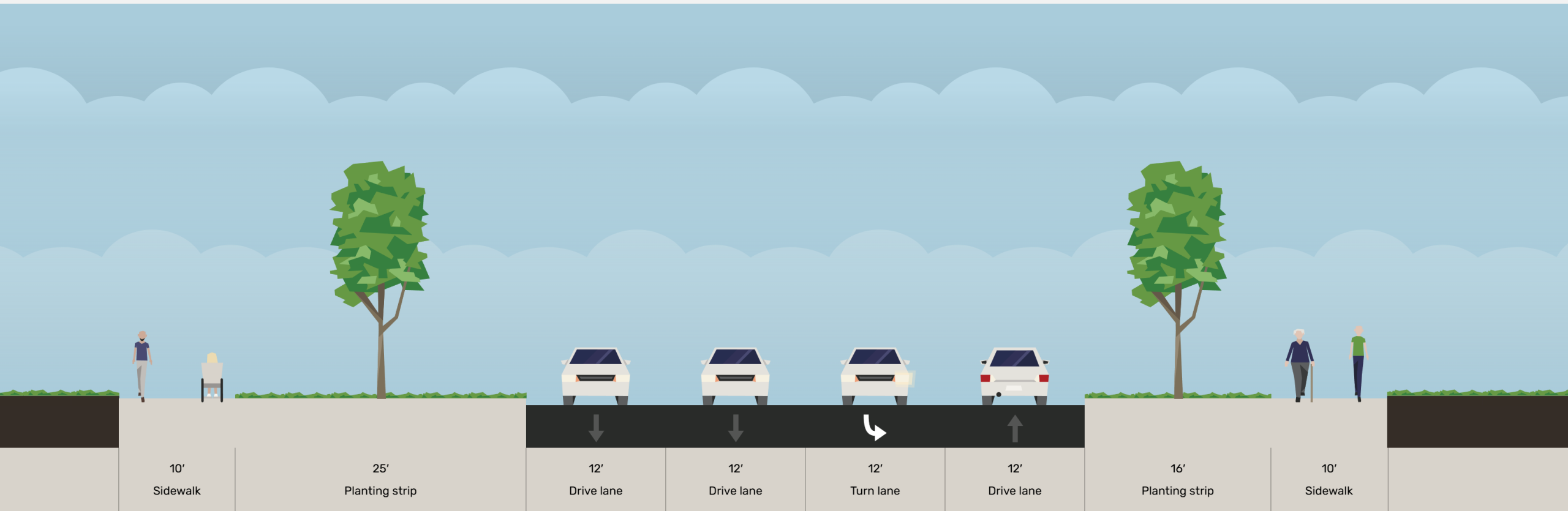
NW 15th St & Andrews Ave Proposed Concept



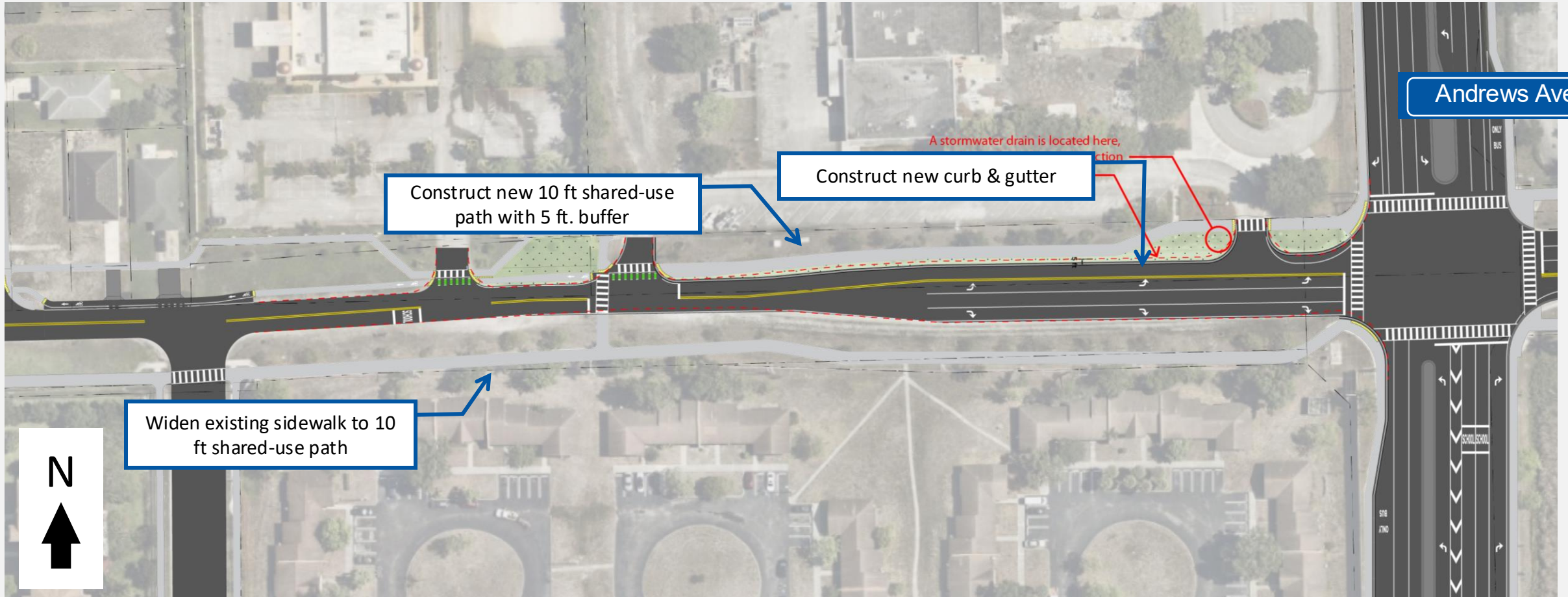
15th Street & East of Andrews Ave Existing Typical Section



15th Street & East of Andrews Ave Proposed Typical Section



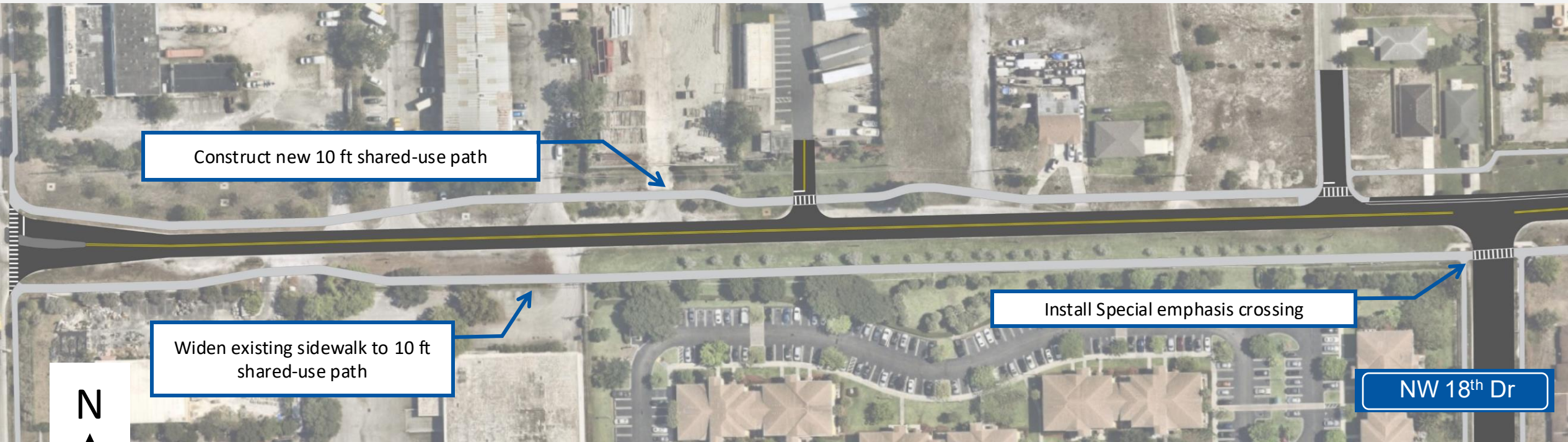
NW 15th St & Robert Markham Elementary Proposed Concept



NW 15th St & Robert Markham Elementary Proposed Concept Render



NW 15th St West of NW 18th Dr Proposed Concept

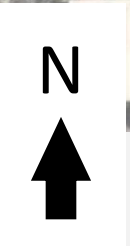


Construct new 10 ft shared-use path

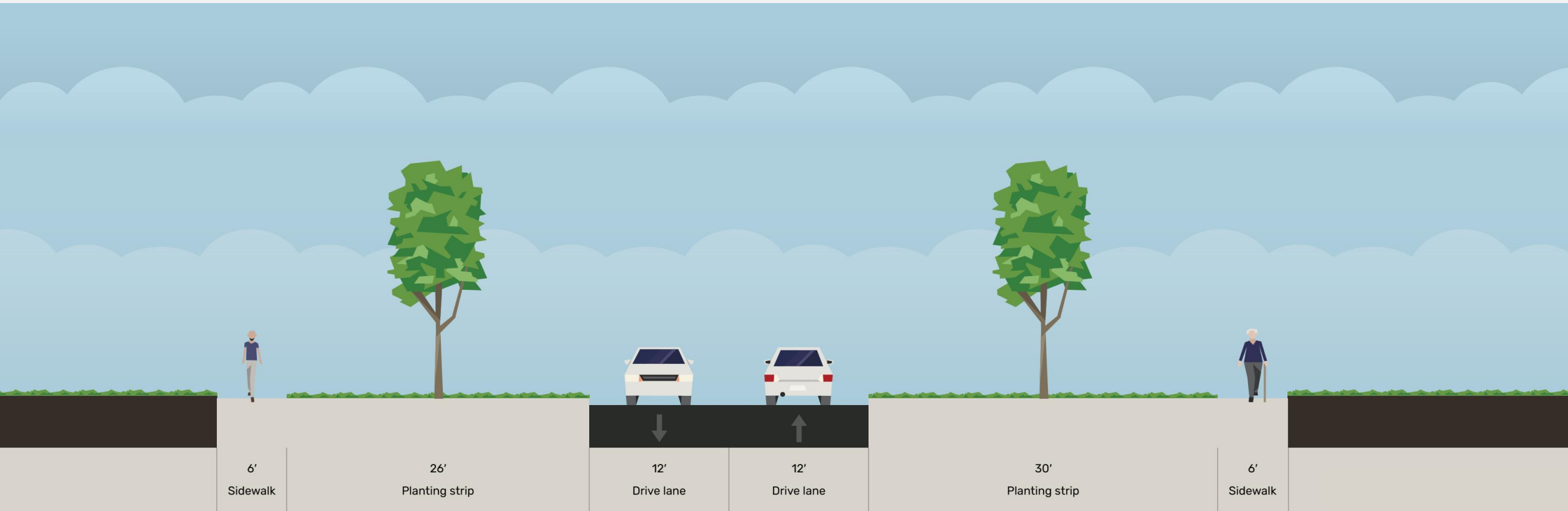
Widen existing sidewalk to 10 ft shared-use path

Install Special emphasis crossing

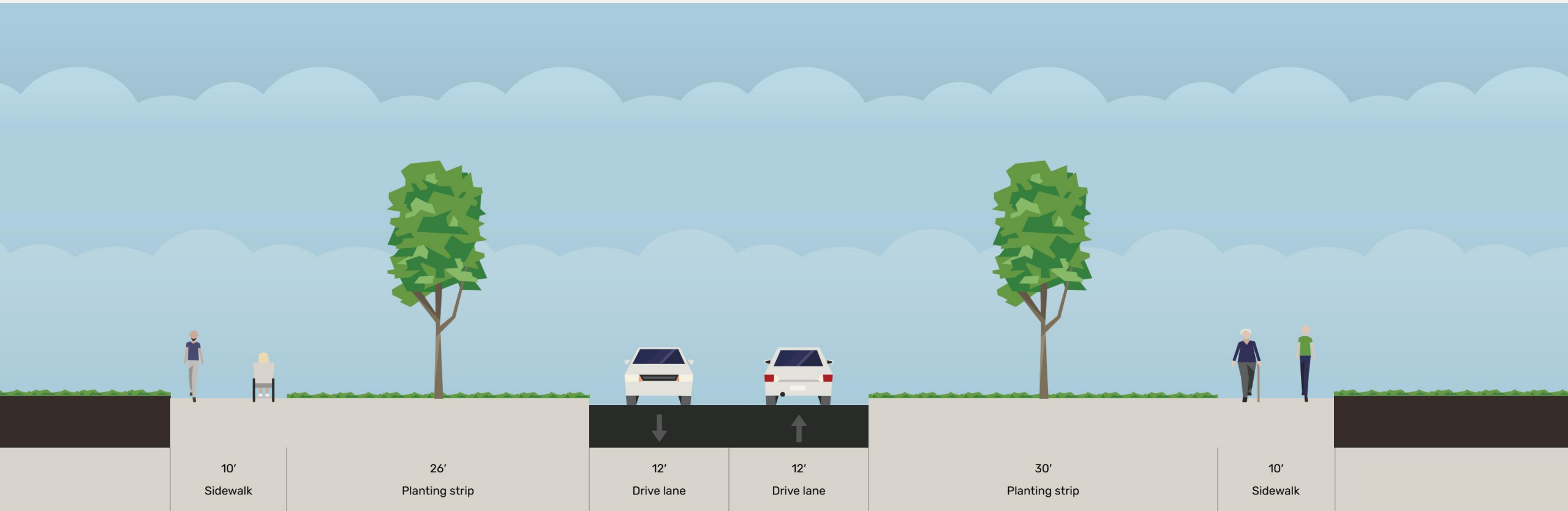
NW 18th Dr

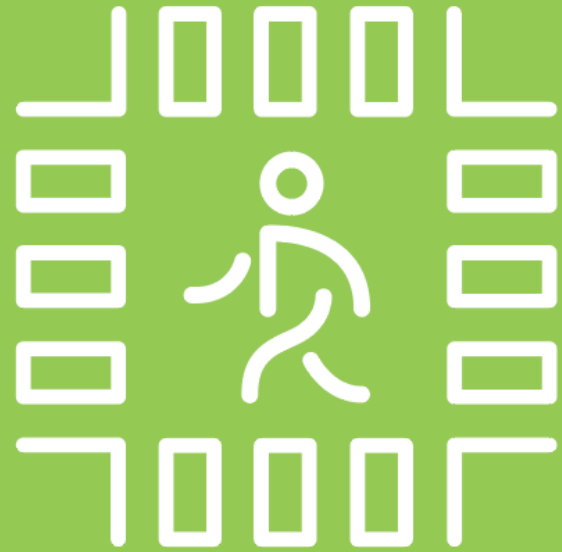


15th Street & West of NW 18th Dr Existing Typical Section



15th Street & West of NW 18th Dr Proposed Typical Section



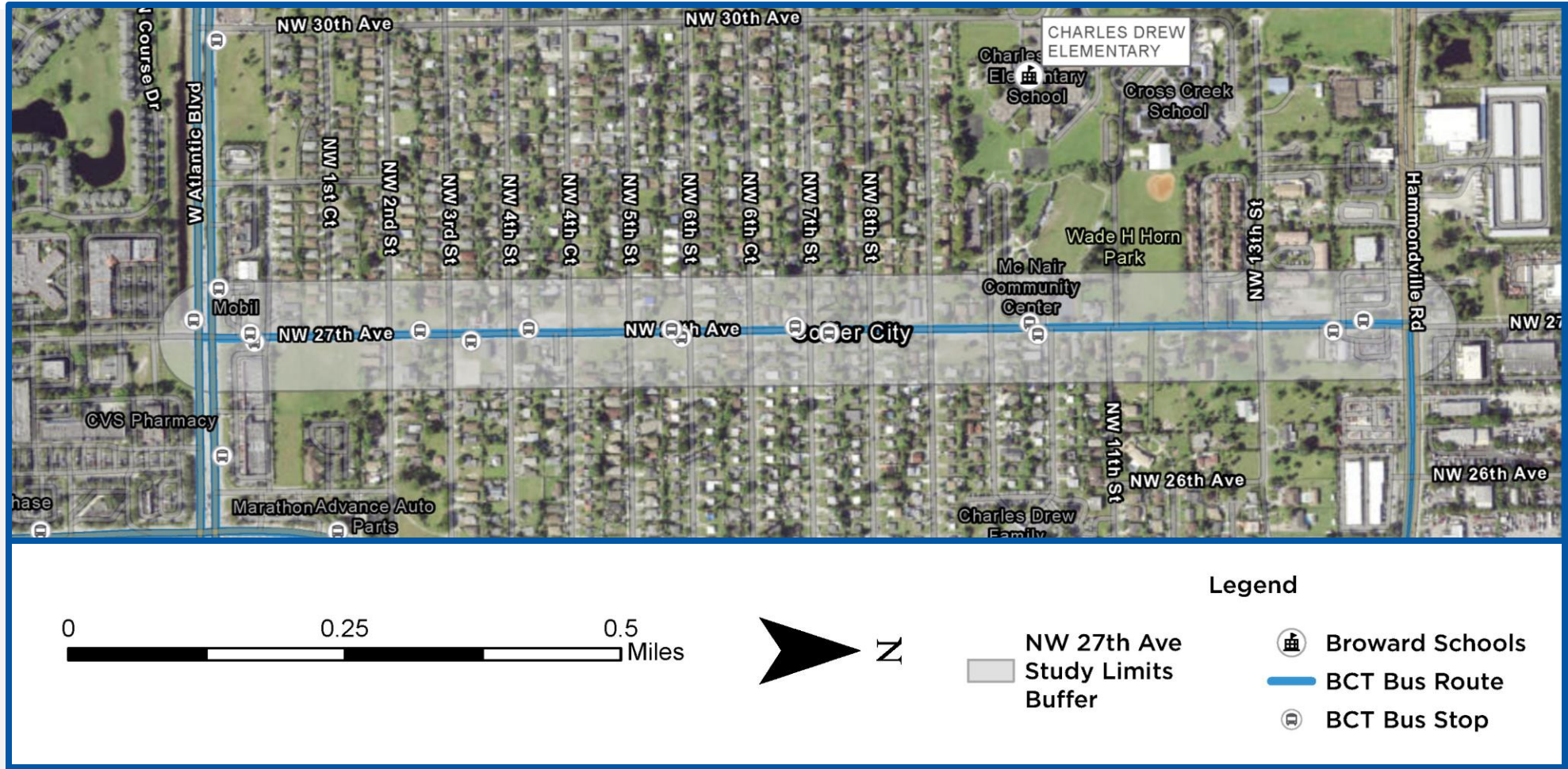


COMPLETE STREETS

NW 27th Avenue



NW 27th Avenue Corridor



NW 27th Avenue Corridor – Existing Conditions



Lack of bus stop amenities



Cracking in sidewalk



Lack of high-emphasis crosswalk on Atlantic Blvd



Missing curb ramp

Goals and Objectives

Safety and Connectivity Goal

Enhance safety and improve connectivity throughout the corridor.

Objectives:

- Install improved lighting fixtures at intersections to increase visibility
- Install crosswalks on minor approaches
- Implement safe routes to school program

Goals and Objectives


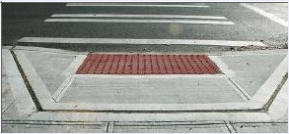


Accessibility and Inclusivity Goal

Create more accessible and inclusive conditions throughout the corridor for all users.

Objectives:

- Reduce posted limit to an area wide of 25 mph.
- Install ADA-compliant curb ramps.
- Install textured/raised intersections and crosswalks
- Collaborate with local communities and schools for community-led traffic calming, such as street murals or other art forms.

NW 27th Avenue General Proposed Improvements

IMPROVEMENT TYPE	IMAGE	DESIRABILITY	PROS	CONS
1. Combined Directional		Very Desirable	<ul style="list-style-type: none"> Provides directionality Can be placed next to vertical obstructions Wayfinding for visually impaired 	<ul style="list-style-type: none"> Requires a lot of ROW (needs boulevard), ie. A small curb radius and/or large pedestrian zone
2. Parallel/Perpendicular Ramps		Acceptable	<ul style="list-style-type: none"> Fits in constrained conditions 	<ul style="list-style-type: none"> Typically not aligned with direction of travel Multiple grade changes required in through walk zone
3. Blended Transition / Depressed Corner / Fan Ramp		Acceptable, less desirable than bi-directional ramps	<ul style="list-style-type: none"> Fits in constrained conditions (little ROW) Ramp is in line with through walk zone 	<ul style="list-style-type: none"> Not good in low elevations (drainage concerns) Easier for vehicles to drive on
4. Single Diagonal Ramp		Undesirable but acceptable if no other ramp type will work	<ul style="list-style-type: none"> Fits in constrained conditions 	<ul style="list-style-type: none"> Not aligned with direction of travel, requires wheeled users to redirect in road No space for pedestrian signals







Textured/Raised Crosswalks



Community-Led Traffic Calming



NW 27th Avenue General Proposed Improvements

IMPROVEMENT TYPE	IMAGE	DESIRABILITY	PROS	CONS
5. Enhanced Transit Amenities		Very Desirable	<ul style="list-style-type: none"> Provides shelter and accessibility to transit users Promotes multi modal transportation 	<ul style="list-style-type: none"> Requires more ROW Increased maintenance
6. High Visibility Crosswalk		Very Desirable	<ul style="list-style-type: none"> Improves safety for pedestrians and bikers Contributes to Safe Routes to School Can be applied to all intersections 	<ul style="list-style-type: none"> Increased maintenance
7. Lighting		Very Desirable	<ul style="list-style-type: none"> Improves safety Crime reduction Better visibility for drivers Improved aesthetics 	<ul style="list-style-type: none"> Light pollution Increased maintenance
8. Textured Intersections		Very Desirable	<ul style="list-style-type: none"> Traffic calming Aesthetic and placemaking benefits Improved safety for pedestrians 	<ul style="list-style-type: none"> Increased maintenance



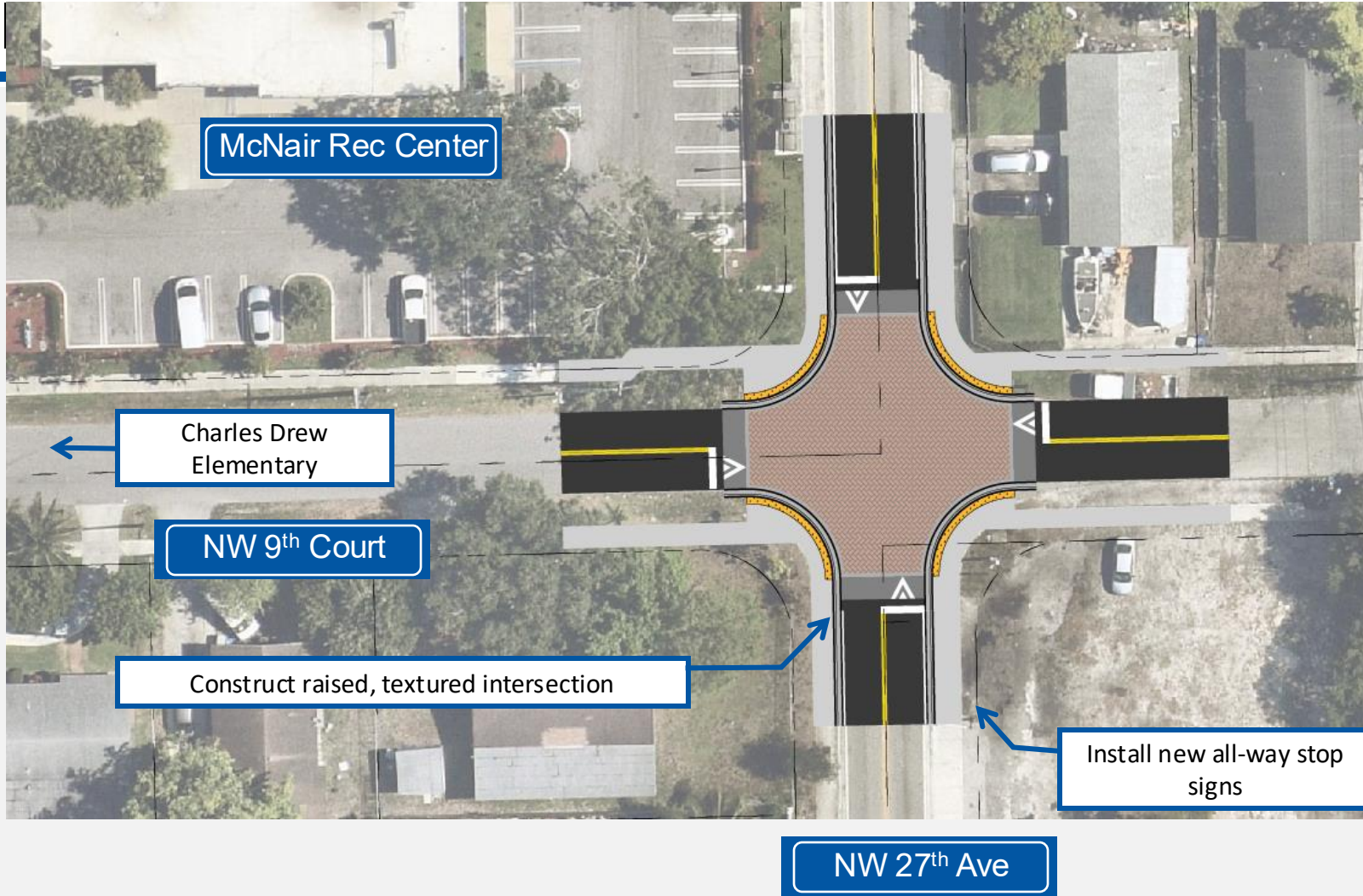
Textured/Raised Crosswalks



Community-Led Traffic Calming



Proposed



Proposed Improvement 27th Avenue & 9th Street



Proposed Improvement 27th Avenue & 9th Street



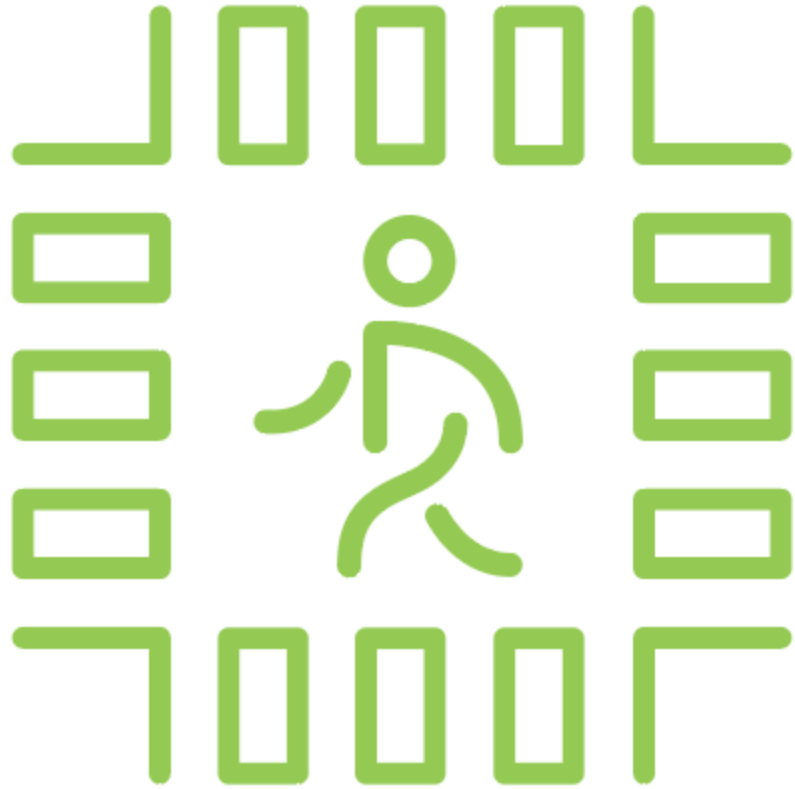
Opportunities and Challenges

Opportunities

- High bike/ped usage
- Unaligned Curb Ramps
- Lighting Improvements
- Safe Routes to School
 - Charles Drew Elementary School Nearby

Challenges

- Utilities
 - Gas pipeline
 - Fiber Optics
- Narrow ROW space
- Speeding



Thank you!