

NW 27th Avenue

Who is the Broward Metropolitan Planning Organization?

- A federally chartered entity responsible for transportation decision making in the Broward region
 - Influence the expenditure of federal and state transportation funds at the regional level
- MPO Board
 - 31 Municipalities
 - Broward County
 - Broward County School Board
 - South Florida Regional Transportation Authority (Tri-Rail)
- Develop plans, conduct studies, establish initiatives and programs

MPO MISSION STATEMENT

To collaboratively plan, prioritize, and fund the delivery of transportation options.

MPO VISION STATEMENT

Our work will have measurable positive impact by ensuring transportation projects are well selected, funded, and delivered.



Goals and Objectives

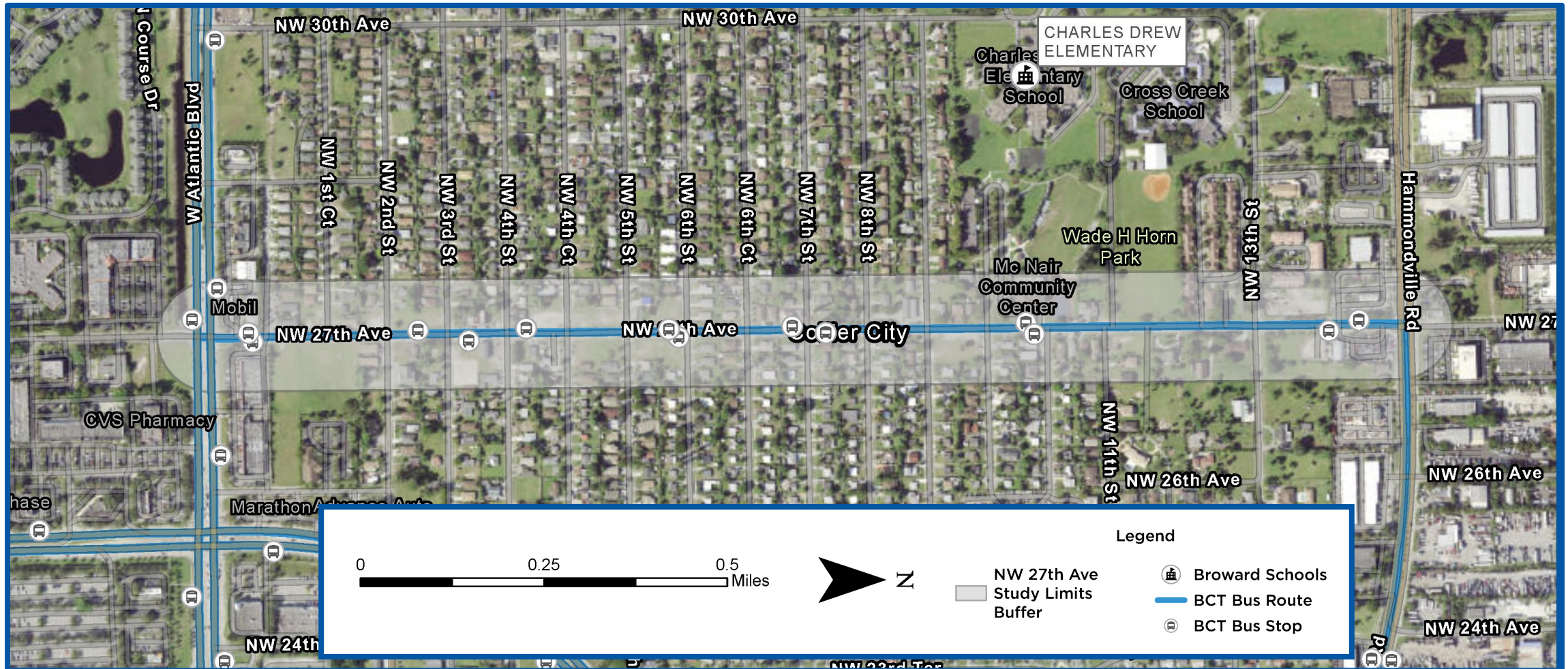
Goal

Provide professional **planning** and **pre-engineering** activities that include conceptual and pre-design project development to advance the **off-system LAP project** identified through the Broward MPO's plans and programs for the preparation of design and construction by the Broward MPO's implementing partner(s).

Objectives:

- Refine transportation needs or deficiencies, and develop a specific locally supported package of improvements
- Public and stakeholder activities and secure support of the project
- Plans with renderings of recommended improvements.
- Planning-level cost estimates for improvements.
- Identify utility owners and any variations that may be needed during design.

Project Limits- NW 27th Ave from W Atlantic Boulevard to Hammondville Road



Public Engagement

- Two public meetings at the Jan Moran Collier City Learning Library
 - March 3, 2025
 - June 25, 2025
- Over 35 participants
- Public outreach effort:
 - Flyer posted on the City's website and around the neighborhood
 - Virtual and In-person Options



What we heard:

Speeding
and Safety

Lighting
Issues

Bus Stop
Improvements

ADA
Compliance

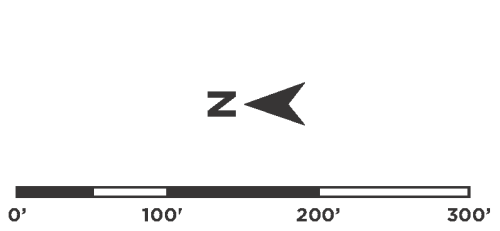
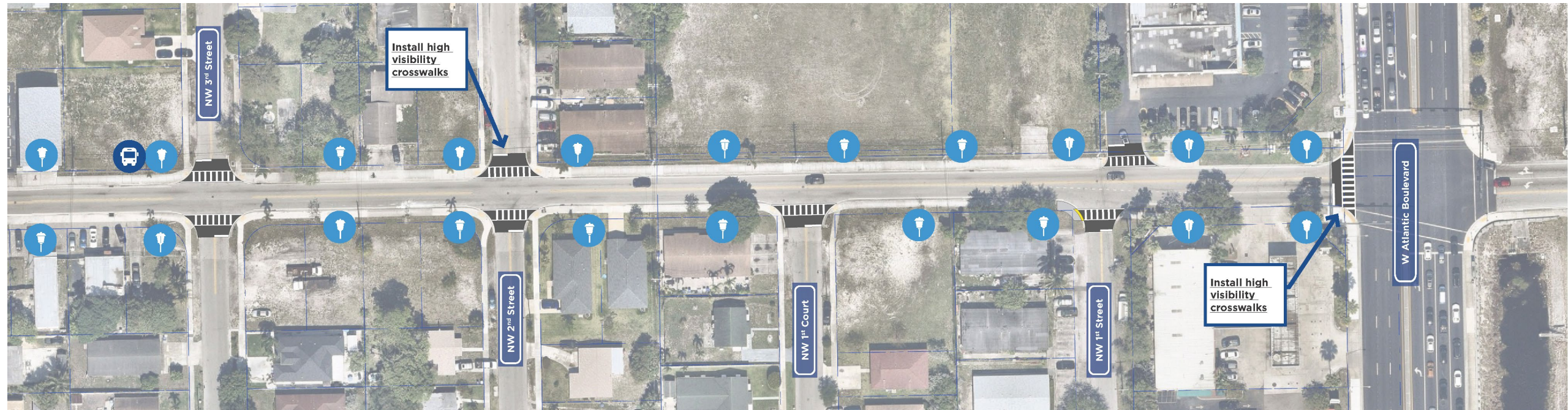
Who did we coordinate with?

- City of Pompano Beach
- Greater Collier City Civic Association
- FDOT

How many outreach activities de we do?

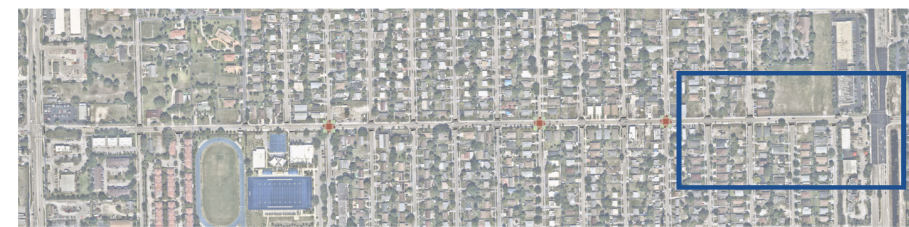
- 3 Community Meetings
- 1 Survey
- 1 Webpage
- Various social media posts
- Various advisory group presentations
- Flyers

NW 3rd Street to W Atlantic Boulevard Proposed Conceptual Plan



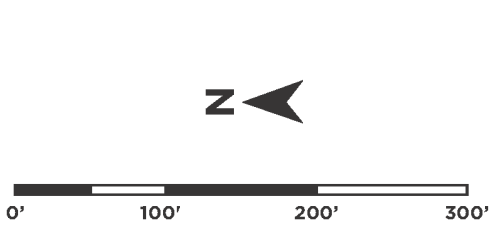
- - - - - : Property/ROW line
- ▬ : Road pavement
- ▬ : Sidewalk
- ▬ : Raised Intersection
- ▬ : ADA Detectable Warning Pad
- ▬ : Landscaping Area
- 🚌 : Enhanced Bus Stop Locations
- 💡 : Pedestrian Lighting

Note: These images and diagrams represent a planning concept based on cursory planning efforts. If concept advances, significant additional design would be required. Pedestrian light pole locations are for conceptual purposes only. Exact type, quantity, and location will be determined during the design phase. Existing bus stop will be evaluated in the design phase for upgrades such as concrete pads, benches and trash receptacles.



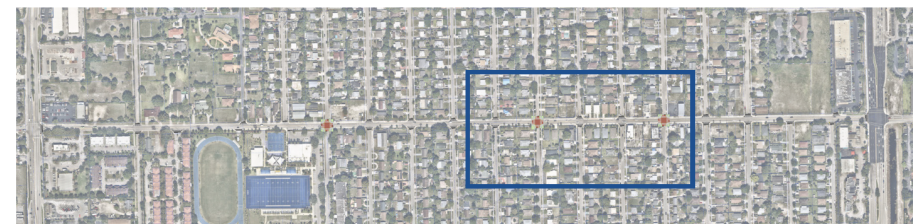
Location Map

NW 6th Court to NW 4th Street Proposed Conceptual Plan



- : Property/ROW line
- : Road pavement
- : Sidewalk
- : Raised Intersection
- : ADA Detectable Warning Pad
- : Landscaping Area
- : Enhanced Bus Stop Locations
- : Pedestrian Lighting

Note: These images and diagrams represent a planning concept based on cursory planning efforts. If concept advances, significant additional design would be required. Pedestrian light pole locations are for conceptual purposes only. Exact type, quantity, and location will be determined during the design phase. Existing bus stop will be evaluated in the design phase for upgrades such as concrete pads, benches and trash receptacles.



Location Map

NW 27th Avenue and NW 9th Court Existing Conditions



NW 27th Avenue and NW 9th Court Proposed Improvements

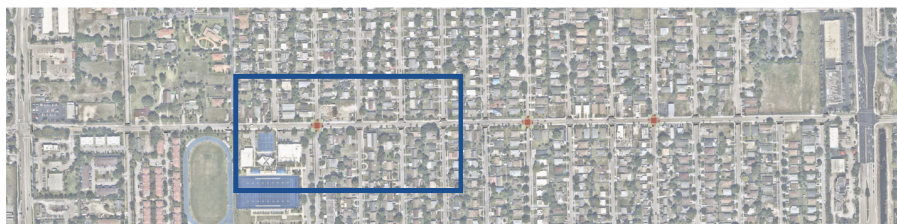


NW 10th Street to NW 7th Street Proposed Conceptual Plan



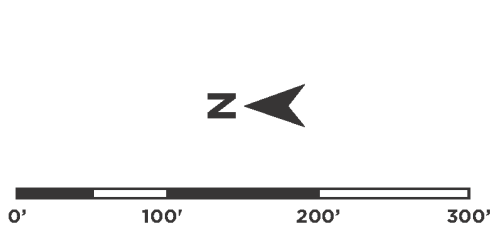
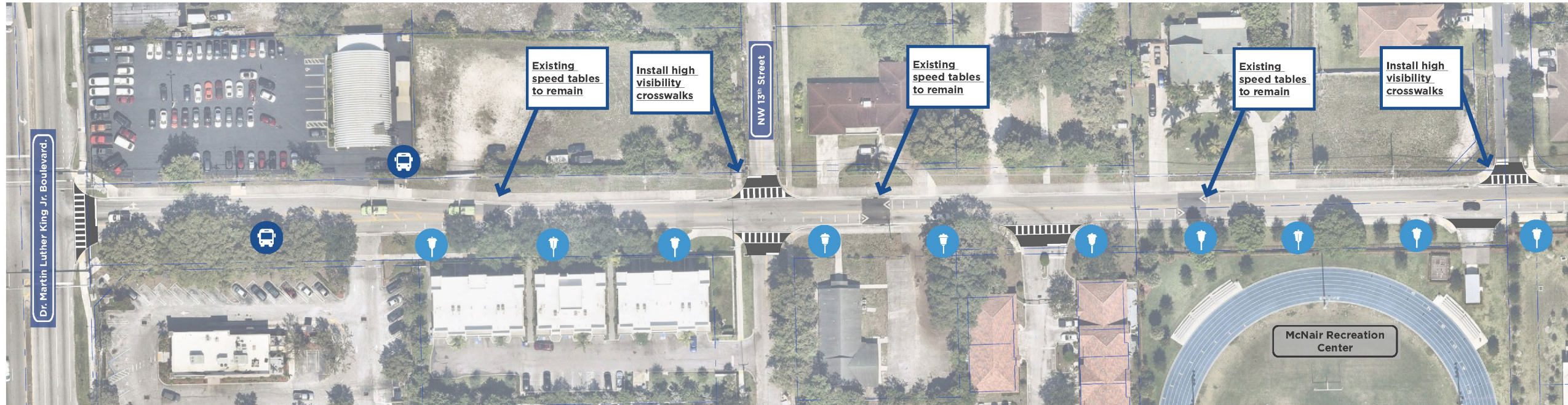
- : Property/ROW line
- : Road pavement
- : Sidewalk
- : Raised Intersection
- : ADA Detectable Warning Pad
- : Landscaping Area
- : Enhanced Bus Stop Locations
- : Pedestrian Lighting

Note: These images and diagrams represent a planning concept based on cursory planning efforts. If concept advances, significant additional design would be required. Pedestrian light pole locations are for conceptual purposes only. Exact type, quantity, and location will be determined during the design phase. Existing bus stop will be evaluated in the design phase for upgrades such as concrete pads, benches and trash receptacles.



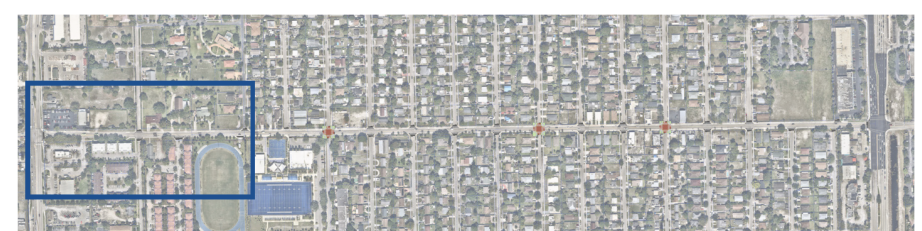
Location Map

Dr. Martin Luther King Jr. Boulevard to NW 11th Street Proposed Conceptual Plan



- - - - : Property/ROW line
- ▬ : Road pavement
- ▬ : Sidewalk
- ▬ : Raised Intersection
- ▬ : ADA Detectable Warning Pad
- ▬ : Landscaping Area
- 🚌 : Enhanced Bus Stop Locations
- 💡 : Pedestrian Lighting

Note: These images and diagrams represent a planning concept based on cursory planning efforts. If concept advances, significant additional design would be required. Pedestrian light pole locations are for conceptual purposes only. Exact type, quantity, and location will be determined during the design phase. Existing bus stop will be evaluated in the design phase for upgrades such as concrete pads, benches and trash receptacles.



Location Map

Next Steps

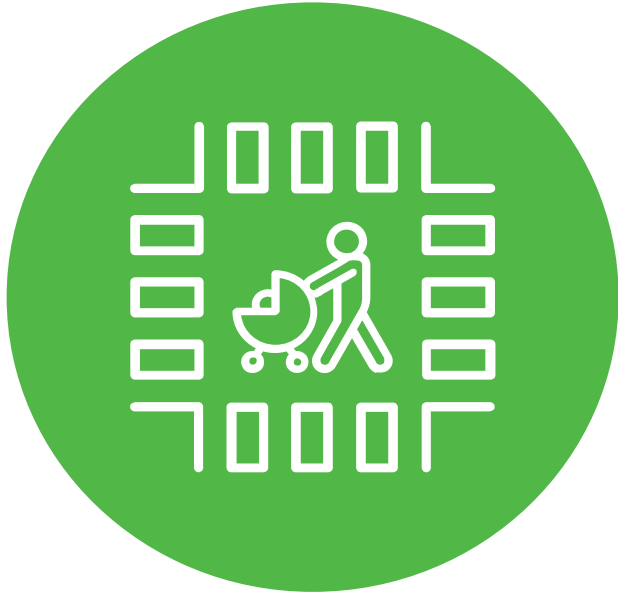
City Commission voted to approve a resolution of support.

FY 2029 – Engineering Design is programmed.

Construction will be programmed approximately 3 years from design.

FM 457580-1





NW 15th Street

Goals and Objectives

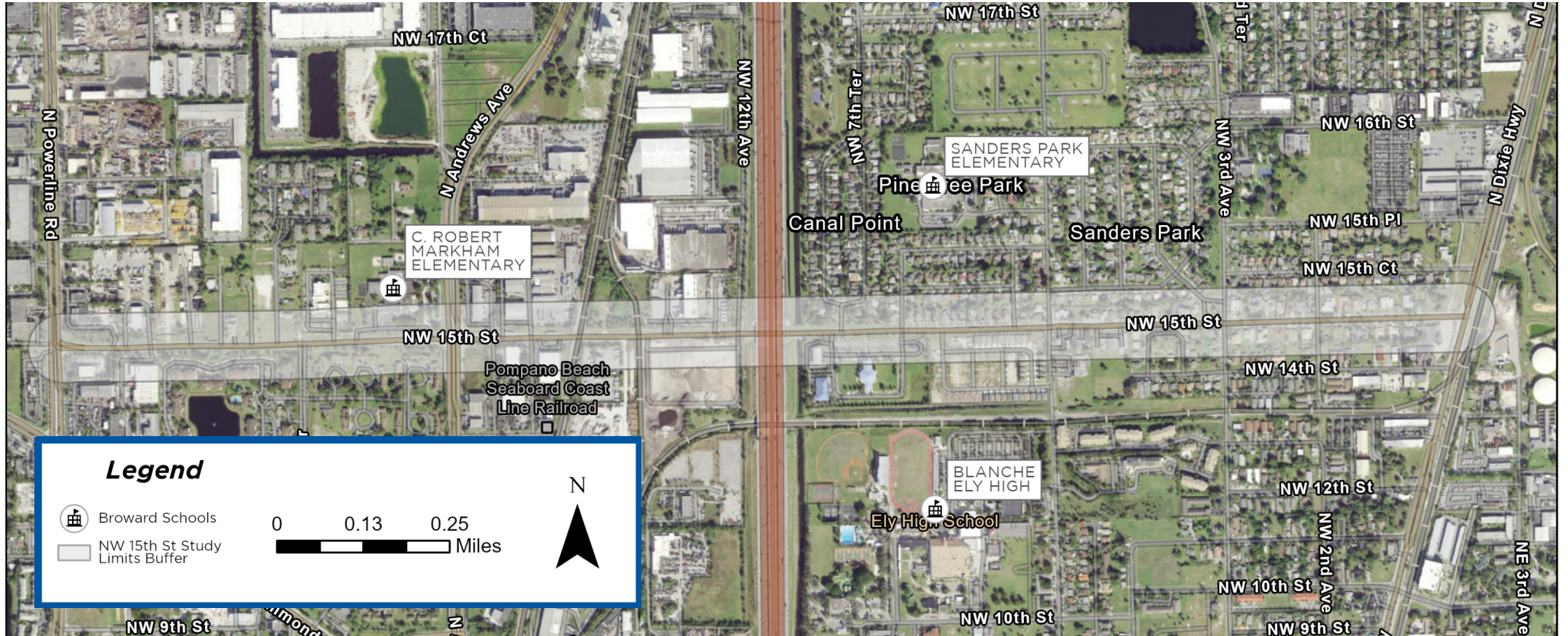
Goal

Provide professional **planning** and **pre-engineering** activities that include conceptual and pre-design project development to advance the **off-system LAP project** identified through the Broward MPO's plans and programs for the preparation of design and construction by the Broward MPO's implementing partner(s).

Objectives:

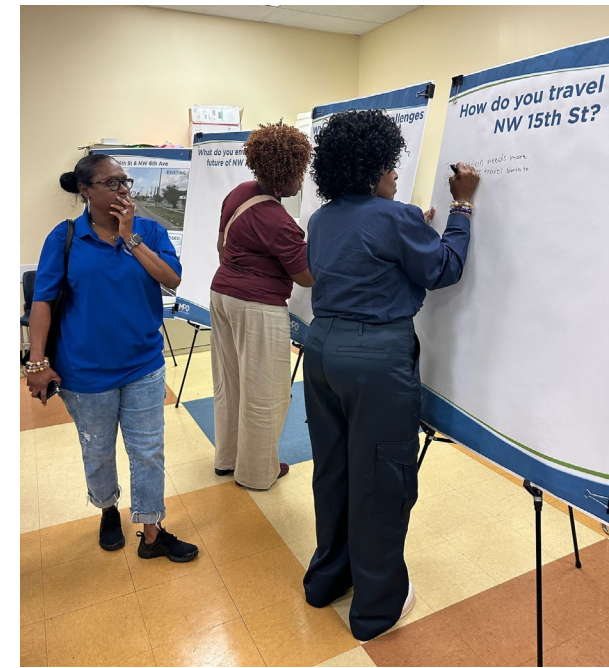
- Refine transportation needs or deficiencies, and develop a specific locally supported package of improvements
- Public and stakeholder activities and secure support of the project
- Plans with renderings of recommended improvements.
- Planning-level cost estimates for improvements.
- Identify utility owners and any variations that may be needed during design.

Project Limits – NW 15th Street from N Powerline Road to N Dixie Highway



Public Engagement

- Two public meetings
 - March 3, 2025, at the Jan Moran Collier City Learning Library
 - June 30, 2025, at the Northwest Branch Library
- Over 40 participants
- Public outreach effort:
 - Flyer posted on the City's website and around the neighborhood
 - Virtual and In-person Options





Who did we coordinate with?

- Broward County
- Broward County Complete Streets Committee
- Islamic Center of South Florida
- City of Pompano Beach
- FDOT
- CRA North West Advisory Committee
- Blanche Ely House Museum

How many outreach activities de we do?

- 2 Community Meetings
- 1 Survey
- 1 Webpage
- Various social media posts
- Various advisory group presentations
- Flyers

What we heard:

Speeding
and Safety

Parking for
Islamic Center

Cut-through
Traffic

Poor Lighting

Truck Parking
And
Movements

Landscaping
(Keep Trees)

AVE

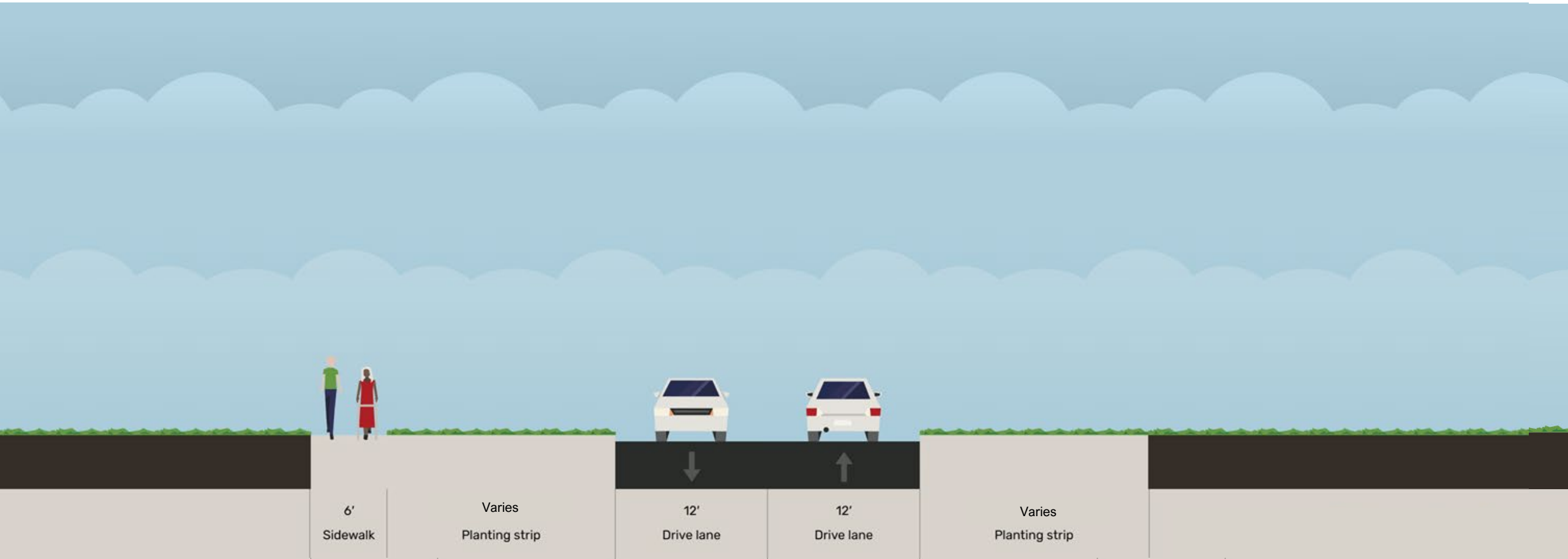
NW 15 ST - PUBLIC MEETING
Please give us your feedback!

STOP 18 wheeler
coming into
the neighborhood

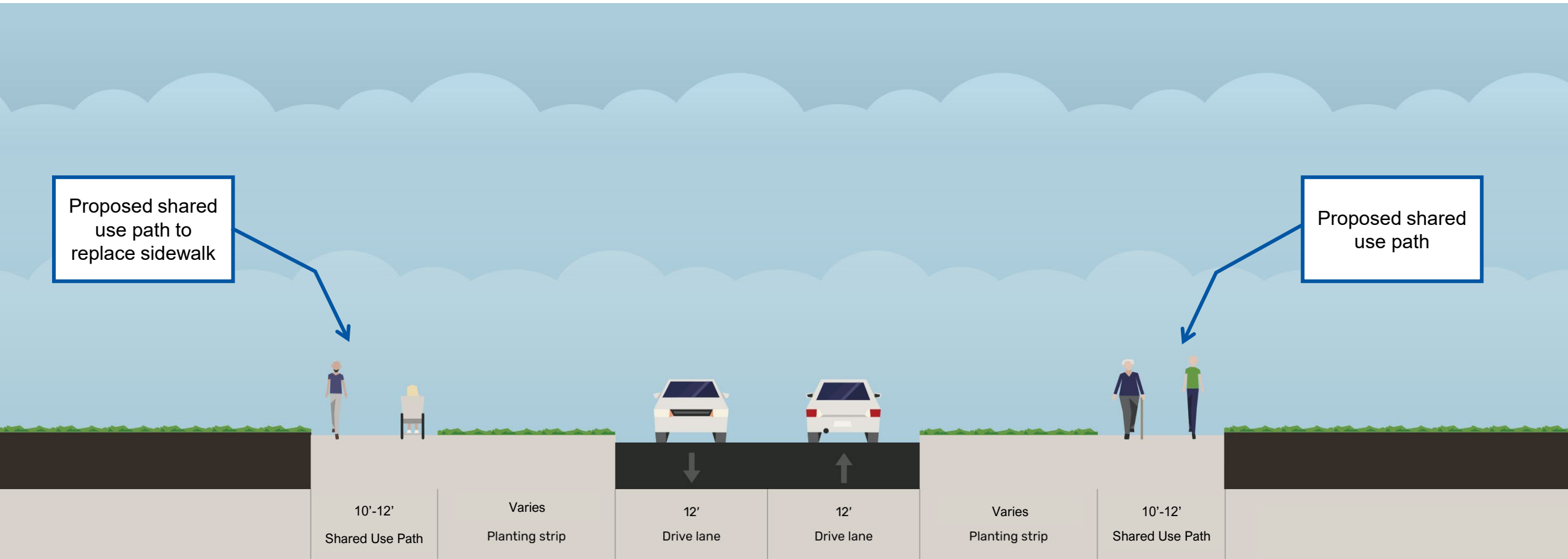
Broward
MPO
Metropolitan Planning Organization

BrowardMPO.org

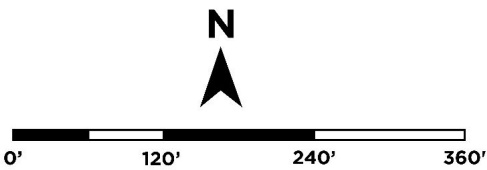
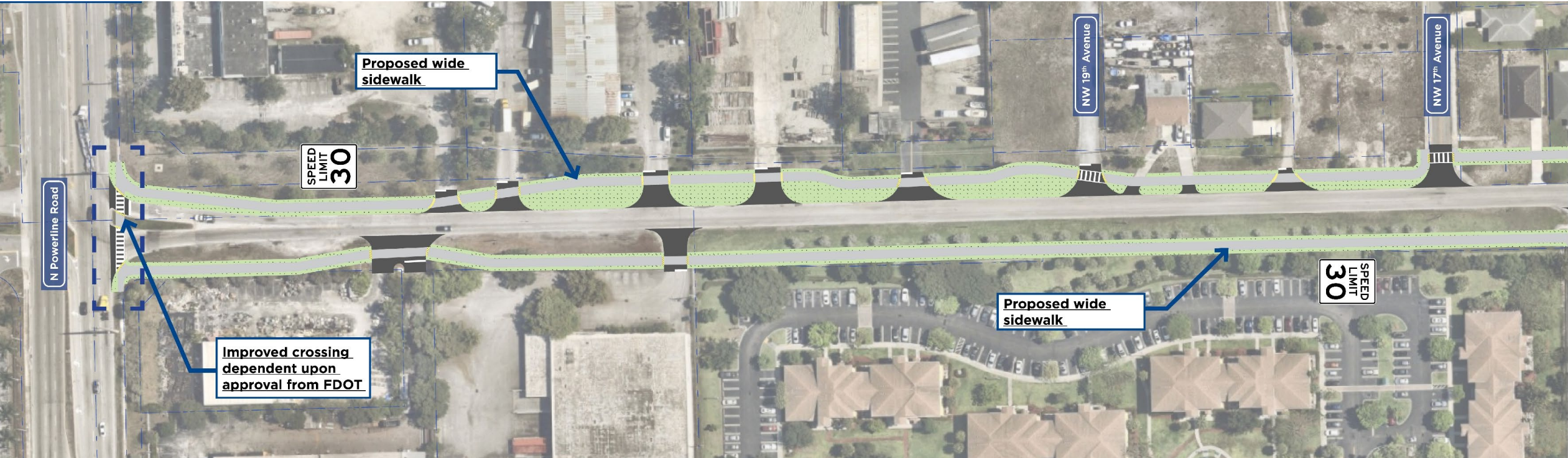
Powerline Road to NW 17th Ave Existing Typical Section



Powerline Road to NW 17th Ave Proposed Typical Section

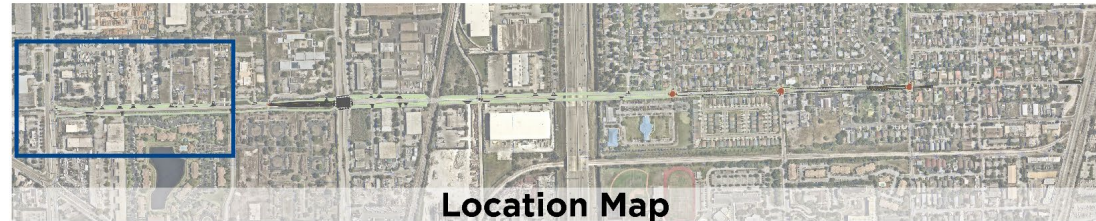


N Powerline Road to NW 17th Avenue Proposed Conceptual Plan

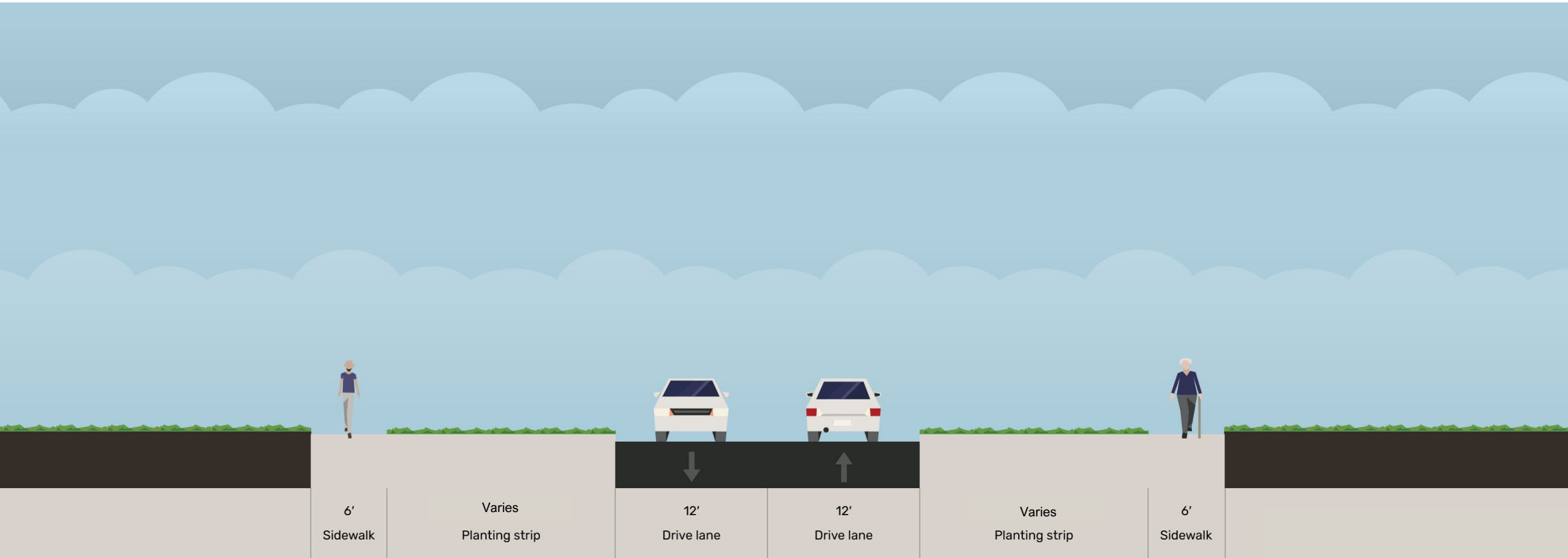


-  : Property/ROW line
-  : Road pavement
-  : Sidewalk
-  : Raised Intersection
-  : ADA Detectable Warning Pad
-  : Landscaping Area

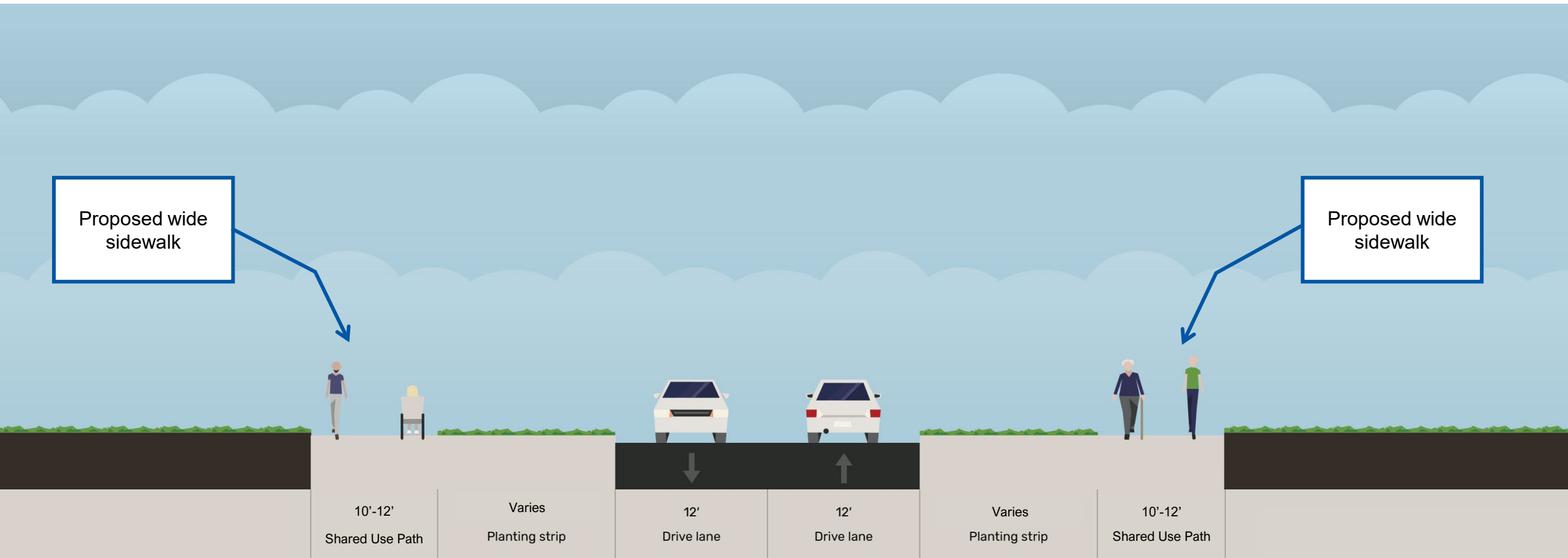
Note: These images and diagrams represent a planning concept based on cursory planning efforts. If concept advances, proposed improvements will be further evaluated and analyzed, significant additional design would be required.



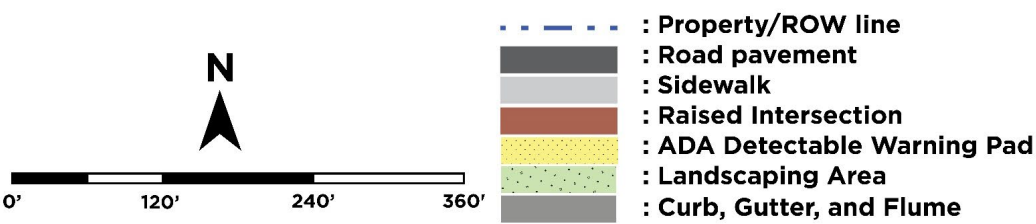
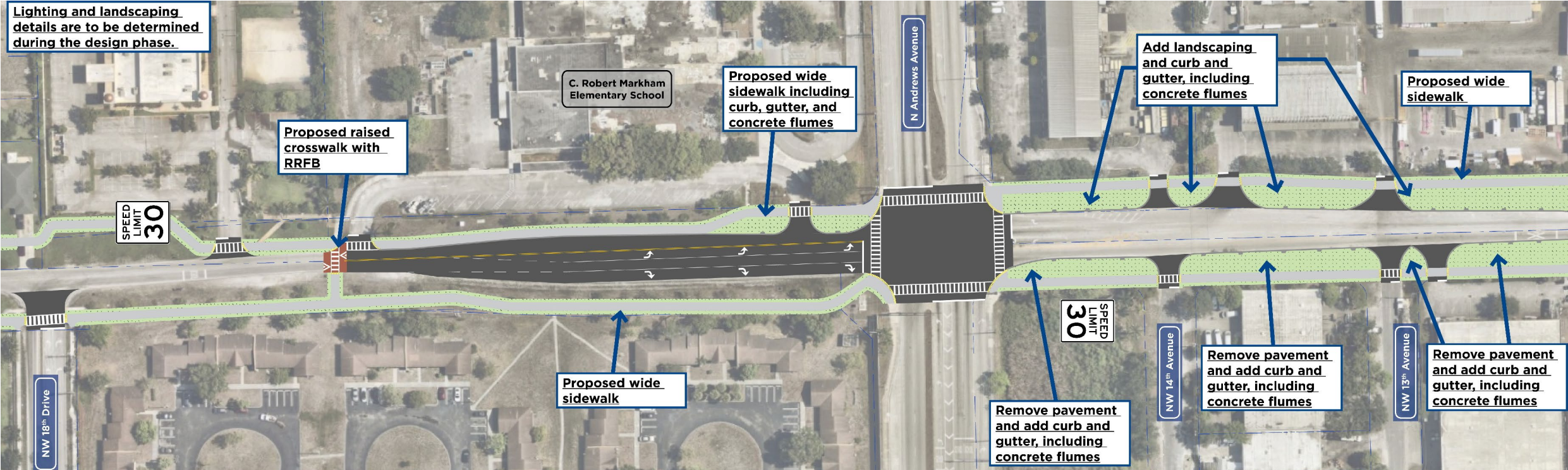
NW 17th Ave to NW 7th Way Existing Typical Section



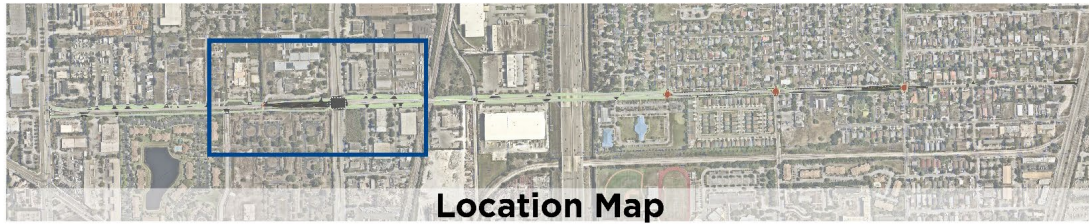
NW 17th Ave to NW 7th Way Proposed Typical Section



NW 18th Drive to NW 13th Avenue Proposed Conceptual Plan

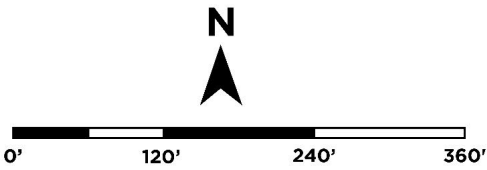
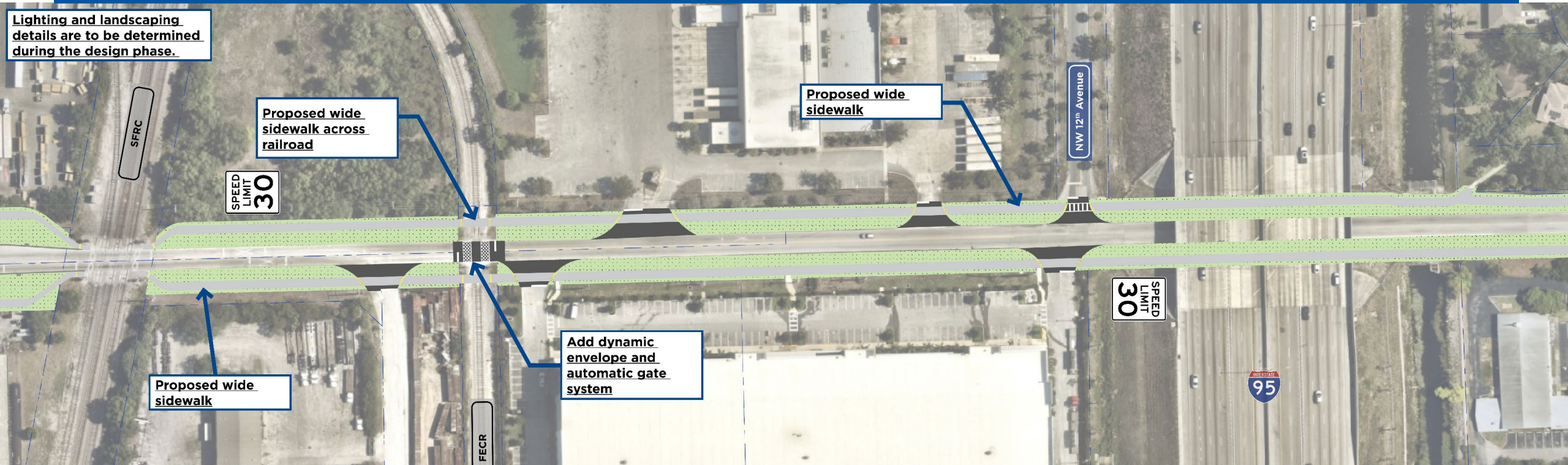


Note: These images and diagrams represent a planning concept based on cursory planning efforts. If concept advances, proposed improvements will be further evaluated and analyzed, significant additional design would be required.



SFRC to I-95 Proposed Conceptual Plan

Lighting and landscaping details are to be determined during the design phase.

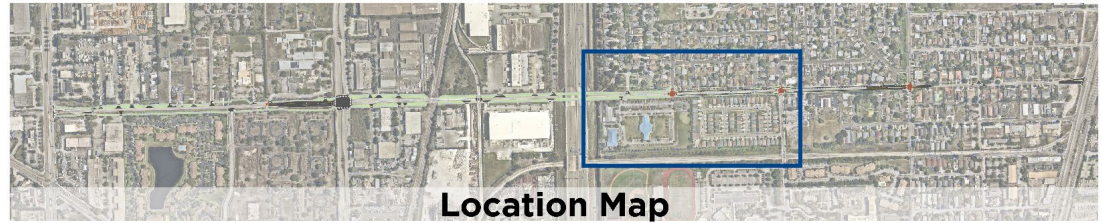


-  : Property/ROW line
-  : Road pavement
-  : Sidewalk
-  : Raised Intersection
-  : ADA Detectable Warning Pad
-  : Landscaping Area

Note: These images and diagrams represent a planning concept based on cursory planning efforts. If concept advances, proposed improvements will be further evaluated and analyzed, significant additional design would be required.



NW 7th Terrace to NW 6th Avenue Proposed Conceptual Plan



Note: These images and diagrams represent a planning concept based on cursory planning efforts. If concept advances, proposed improvements will be further evaluated and analyzed, significant additional design would be required.

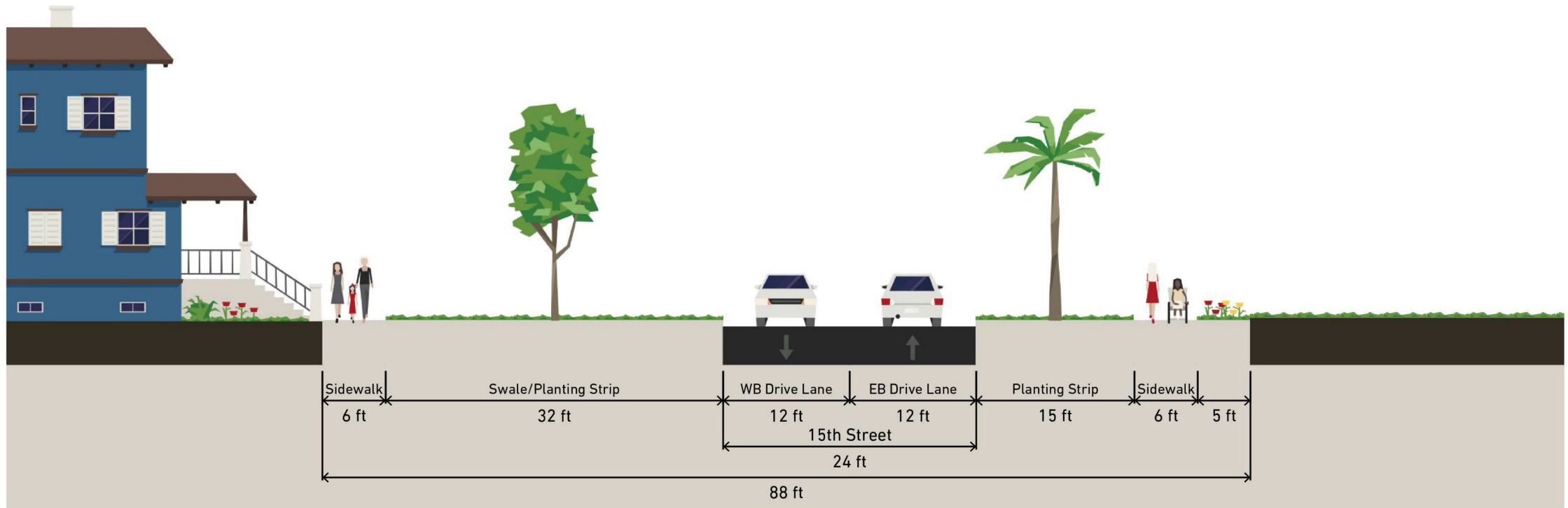
NW 15th Street and NW 6th Avenue Existing



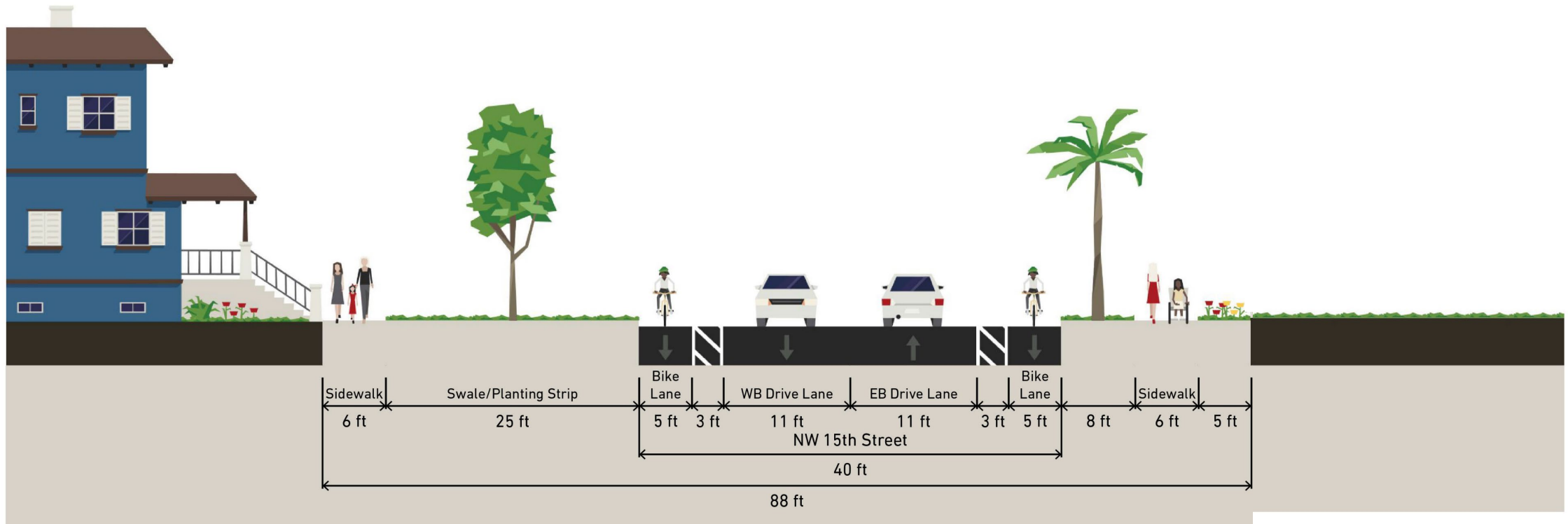
NW 15th Street and NW 6th Avenue Proposed



NW 15th Street west of NW 6th Avenue Existing Typical Section

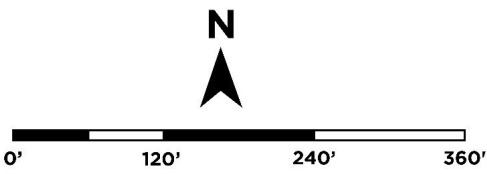
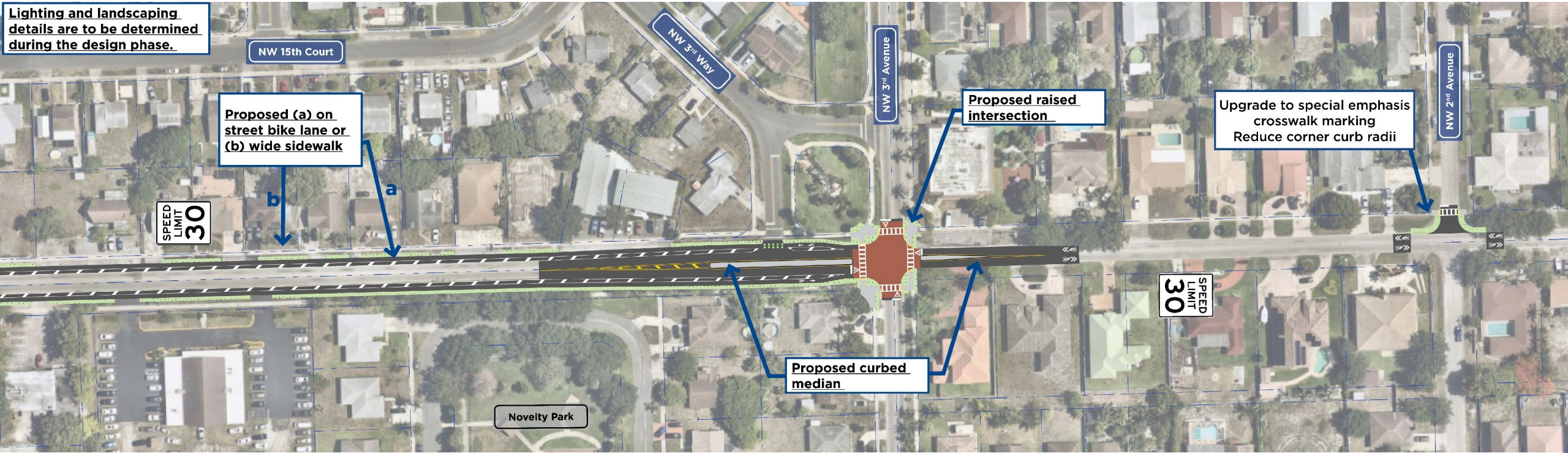


NW 15th Street west of 6th Avenue Proposed Typical Section



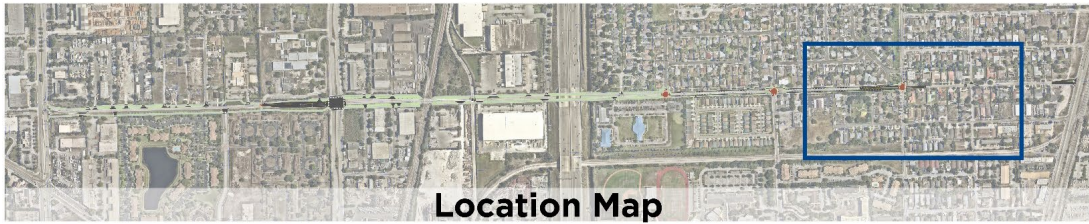
NW 7th Terrace to NW 6th Avenue Proposed Conceptual Plan

Lighting and landscaping details are to be determined during the design phase.



-  : Property/ROW line
-  : Road pavement
-  : Sidewalk
-  : Raised Intersection
-  : ADA Detectable Warning Pad
-  : Landscaping Area

Note: These images and diagrams represent a planning concept based on cursory planning efforts. If concept advances, proposed improvements will be further evaluated and analyzed, significant additional design would be required.



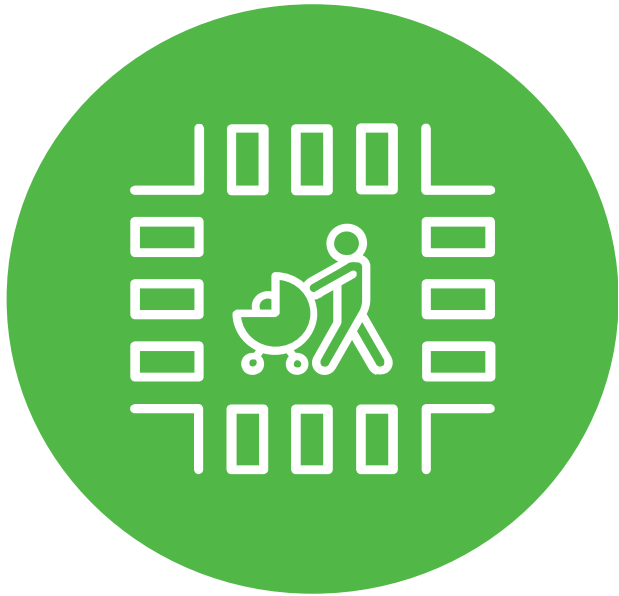
Next Steps

City Commission will consider a resolution of support for the project.

Engineering design and Construction has not been programmed.

MTP ID: BM061





Questions?