



Transportation Master Plan

Presentation to CANA

<https://www.browardmpo.org/plans/city-of-wilton-manors>



Agenda

1. Project Background
2. Milestone 1: Plan Vision
 - Public Engagement
3. Milestone 2: Plan Study Area
 - Field Audits
 - 5-Year Crash Data
 - Existing Facilities Assessment
4. Milestone 3: Existing Conditions and Issues
5. Next Steps
6. Discussion



Introduction: Broward MPO

WHO IS THE BROWARD METROPOLITAN PLANNING ORGANIZATION?



The Broward Metropolitan Planning Organization (MPO) is a dynamic public agency who's main job is to plan and coordinate transportation projects and programs in Broward County. Think of it like a group of people comprised of your elected officials, and the local community who come together to figure out the best ways to improve how people and goods move safely around your region. This could include improving roads, planning new transit routes, setting up bike lanes, adding sidewalks, improving access to ports and airports, or managing traffic. The Broward MPO helps to ensure that any money spent on transportation in Broward County is used efficiently and effectively.

They also collaborate with the public and other stakeholders to make sure the decisions they make are in line with what the community wants and needs.



WHAT'S IN IT FOR YOU?

An efficient, well planned, and funded transportation system makes a Better Broward for you, your family, friends, and colleagues. Whether you live, work, or play in Broward, the MPO plays a critical role in improving the quality of life within a community.

BE PART OF BROWARD'S FUTURE & GET INVOLVED

Ask questions and send us your comments by visiting our website BrowardMPO.org or by emailing us at info@browardmpo.org.



FOLLOW US ON SOCIAL MEDIA!

Speak Up Broward

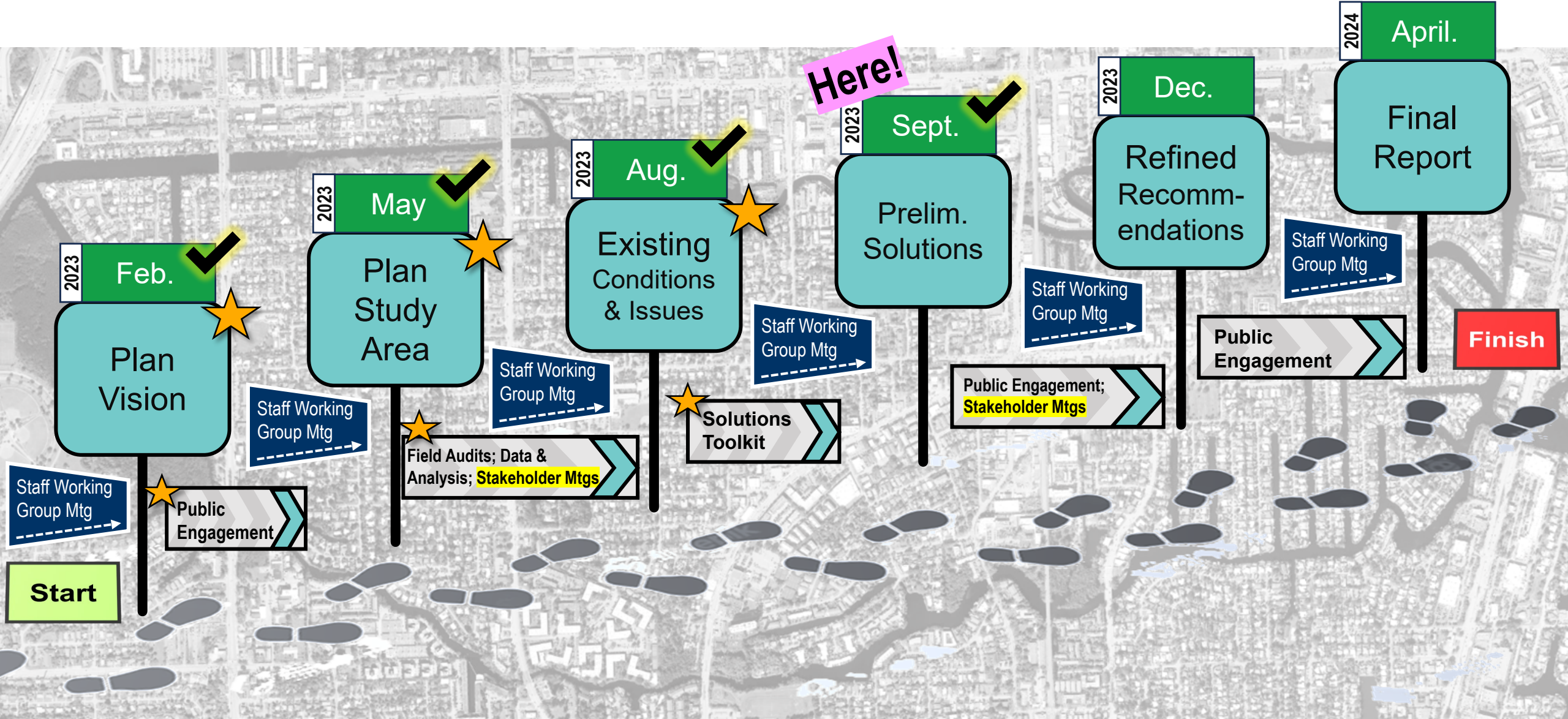


- Broward MPO's City Services team offers technical assistance directly to local governments to develop Multimodal Transportation Plans.
 - ✓ Establishing planning goals
 - ✓ Evaluating options
 - ✓ Developing project planning concepts
 - ✓ Preparation of planning-level cost estimates.
 - ✓ Assessing needs
 - ✓ Engaging with stakeholders
- Since January 2023, Broward MPO has been providing technical assistance to the **City of Wilton Manors** with the development of a **Transportation Master Plan (TMP)**.
- Broward MPO Project Manager is Karen Friedman
- For more information on the Wilton Manors TMP visit: <https://www.browardmpo.org/plans/city-of-wilton-manors>



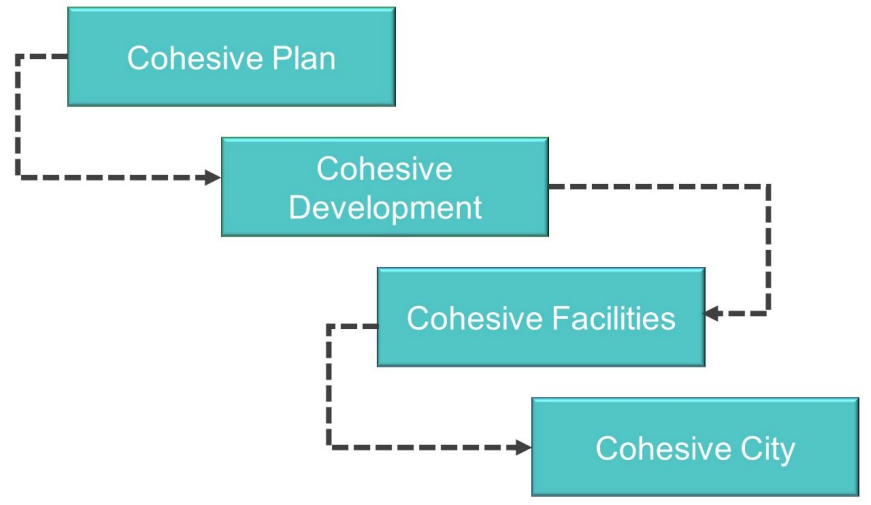
BrowardMPO.org

TMP Schedule & Major Milestones

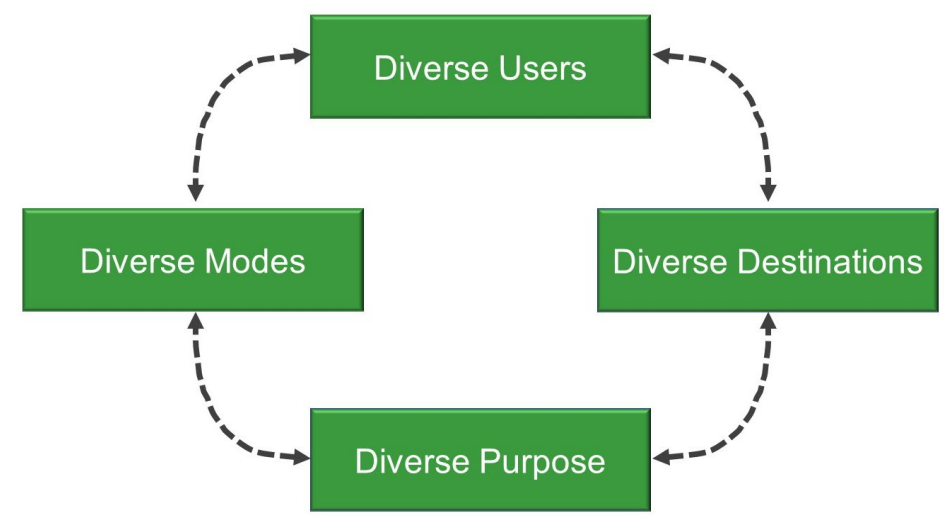


Milestone #1: Plan Vision

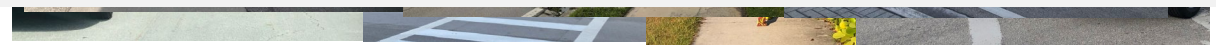
Create a cohesive community



Address the community's diverse needs



*The Vision of the City of Wilton Manors Transportation Master Plan is to develop multimodal facilities that create a **cohesive community** and **address the diverse needs** of residents, visitors, and business owners. The Plan's recommended improvements are intended to improve **safety**, walkability, quality of life, and economic development through the provision of **safe**, comfortable, and convenient **walking and biking networks**. Specific consideration is given to facilities needed for both **daytime and nighttime usage**. By identifying **specific transportation projects**, the plan is intended to assist the City in **prioritizing effective transportation investments** in the short, mid, and long term.*



Public Engagement



The City of Wilton Manors
**TRANSPORTATION
MASTER PLAN**



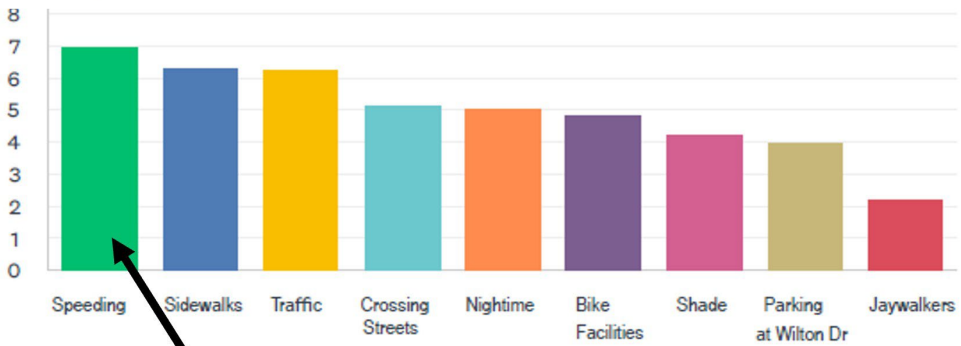
Share **YOUR** Comments

www.surveymonkey.com/r/WM_Transportation



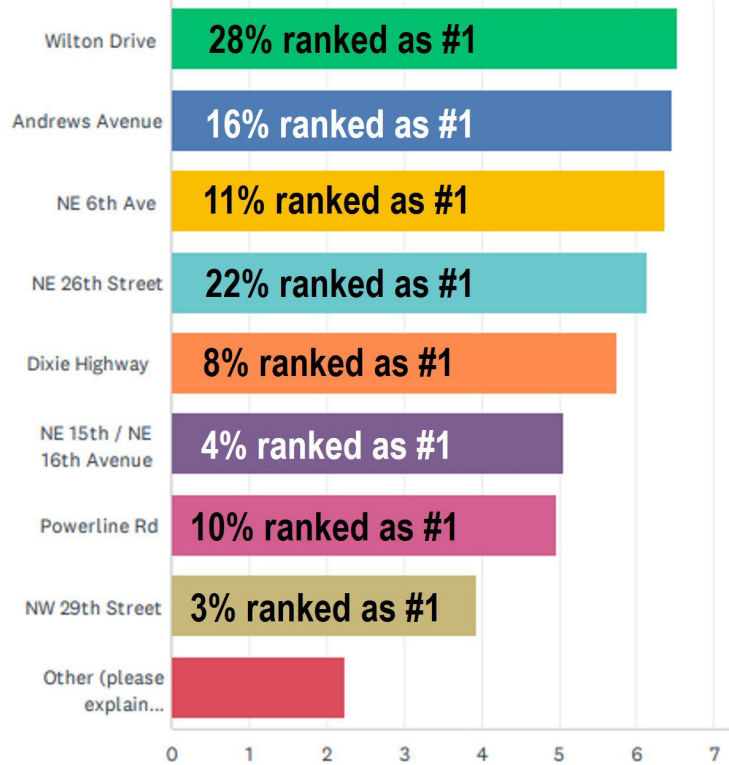
- Feb 2023 to May 2023
- 478 Responses
- 204 General Comments
- 5 Questions, plus zip codes, general comments
- 38% from 33305, 33% from 33334, 23% from 33311

Q2: Please rank in order your biggest concerns about transportation in Wilton Manors

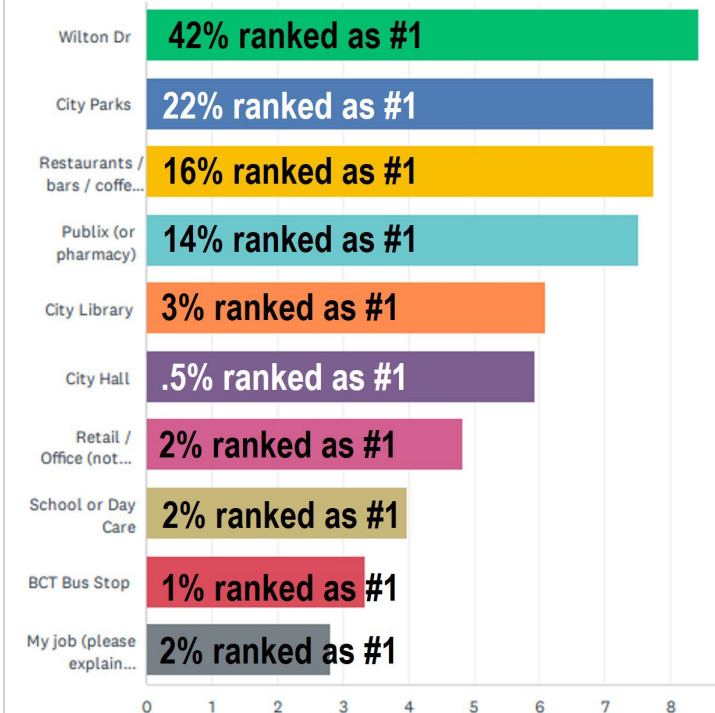


38% ranked as #1

Q5 Please rank in order the streets you would like to have better walkability



Q6 Rank in order the locations in Wilton Manors you would like to be able to walk or bike to.



Public Engagement

- 11 Attendees at 4/19/2023 Afternoon Meeting
- 19 Attendees at 4/24/2023 Evening Meeting

Andrews Avenue / 43 comments

- List of intersections: NE 24 St, NE 26 St, NW 20 St, NW 21 Ct, NW 25 St, NW 29 St
- Most common topics: Priority, pedestrian/crosswalk, intersection safety
- **Overall summary: Should be a priority roadway. There are lack of crosswalks and intersection safety concerns for pedestrians.**

NE 26 Street / 35 comments

- List of intersections: 5 Points (east, Andrews Av, NE 6 Av, NE 8 Av
- Most common topics: Priority, Shade, Pedestrian
- **Overall summary: A lot of pedestrian safety concerns and crosswalk needs,. NE 26 St is lacking shade and should be a priority roadway**

Powerline Rd / 22 comments

- List of intersections: NW 25 Ct, NW 29 St, NW 9 Te
- Most common topics: Pedestrian, Crosswalk
- **Overall summary: There should be better connectivity to Mickel Park. There are a lot of pedestrian safety/crosswalk needs.**

Wilton Drive / 18 comments

- List of intersections: City Hall, Belle Isle to 5 points, NE 20 St, NW 7 Av
- Most common topics: Pedestrian, Crosswalk, Signals
- **Overall summary: There is a lot of jaywalking, due to crosswalk placement. Signals take too long.**

Dixie Highway / 15 comments

- List of intersections: 5 points, NE 24 St, NE 26 St
- Most common topics: Safety, Pedestrian
- **Overall summary: There are several safety comments. There are crosswalk needs and pedestrian safety issues.**

Misc. Locations / 16 comments

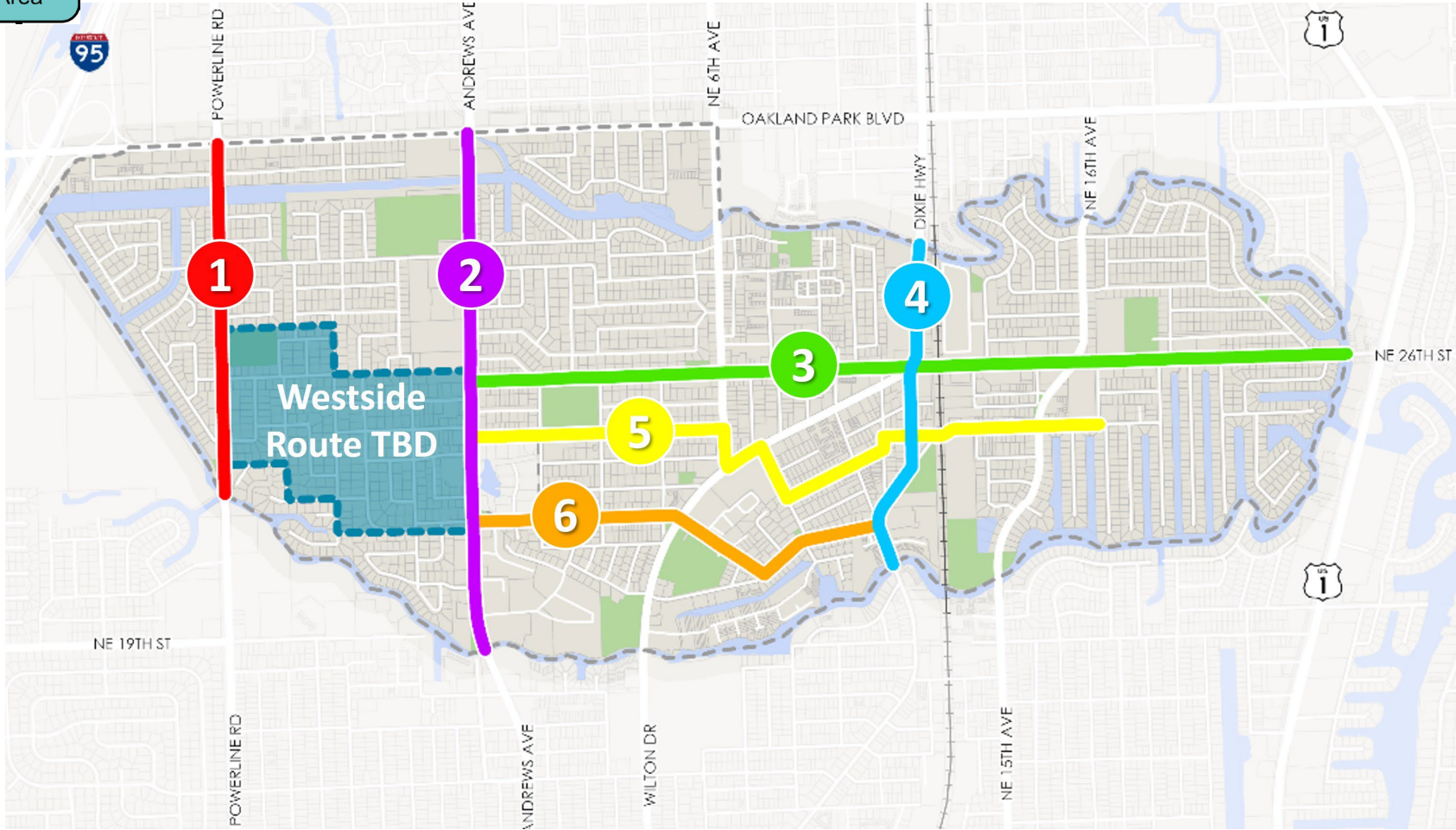
- Locations: NE 15 Av; NE 21 Ct; NE 6 Av; NW 29 St
- **Overall summary: There are a lot of sidewalk gaps/needs. Due to vehicles speeding, there are bike/ped safety concerns**

General Comments / 41 comments

- Most common topics: Bike facilities; Routes
- **Overall summary: More off-street bike improvements are needed, additional bike racks are needed, cut through traffic is an ongoing concern**



Milestone #2: Plan Study Area



Plan Study Area: Six roadways to be assessed for existing conditions / needs and have specific transportation projects identified.

- Traverse the City (3 N/S roadways + 3 E/W roadways)
- Varying roadway classifications / intensities
- Abut diverse land use categories / densities
- Focus on both corridors and intersections

(1) Powerline Rd (2) Andrews Av (3) NE 26 St (4) N. Dixie Hwy (5) NE 24 St Route (6) NE 21 Ct Route (+ Future westside route)



Field Audits

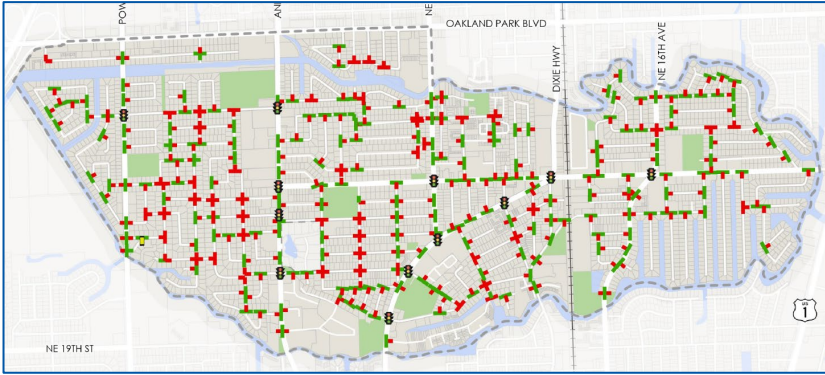
Missing Facilities (crosswalks, bike lanes, sidewalk gaps) ● Facility Conditions (obstructions, visibility) ● Pedestrian / vehicle conflicts (back-out parking, pedestrian signal phasing, pedestrians walking in roadway) ● Driver behaviors (speeding, yielding, prohibited turn movements) ● Pedestrian behaviors (crossing locations, exercising, walking dogs, pushing strollers) ● Bicyclist behaviors (riding on sidewalks, riding against traffic) ● Roadway Users (K-12 students, transit riders, senior citizens, etc...) ● Transit Stops Amenities



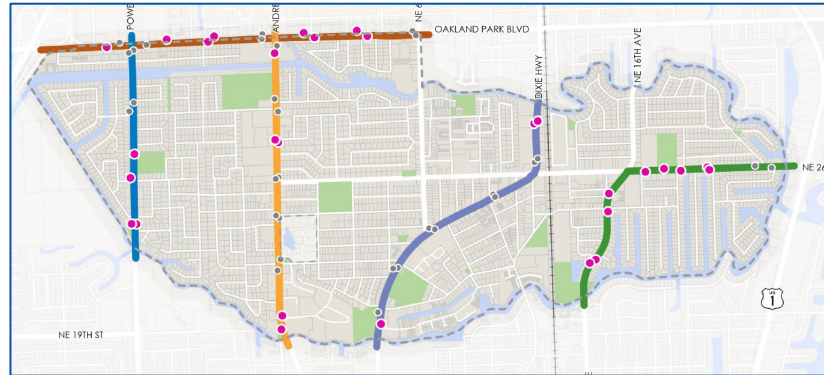
Existing Facilities Assessment

Existing Facilities ● Existing Conditions ● 5-Year Crash Trends ● Demographics ● Traffic Data ● Observations

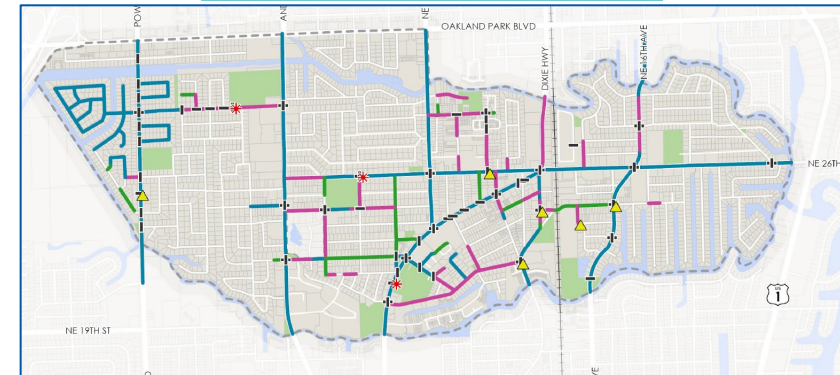
Intersection Control



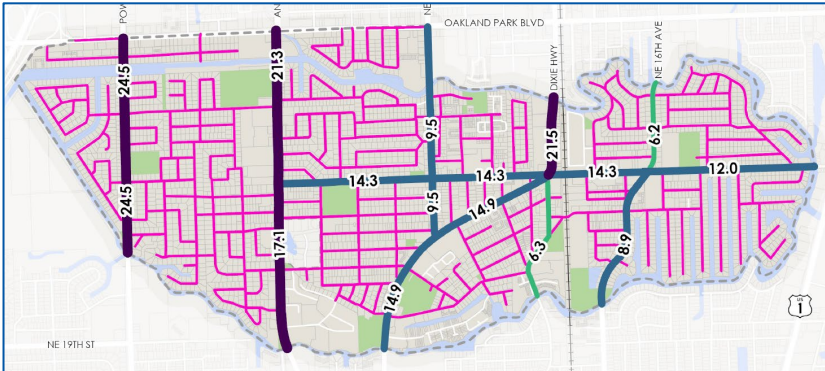
Transit Routes and Stops



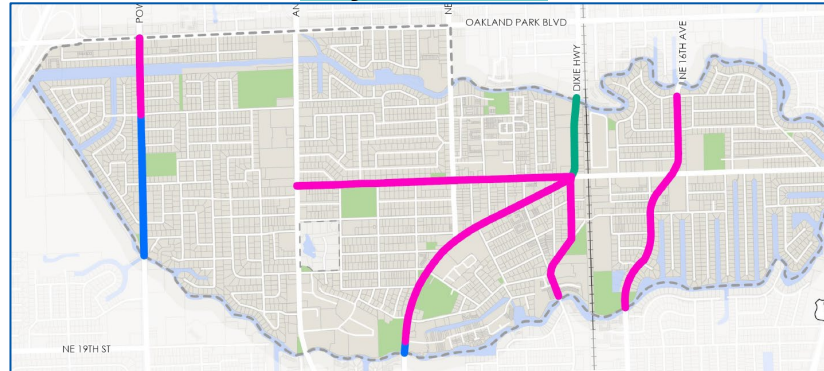
Sidewalks and Traffic Calming



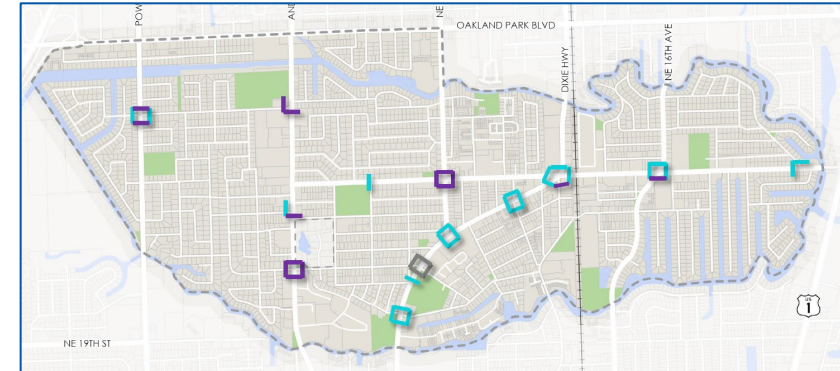
Daily Traffic Volumes (AADT)



Bicycle Network

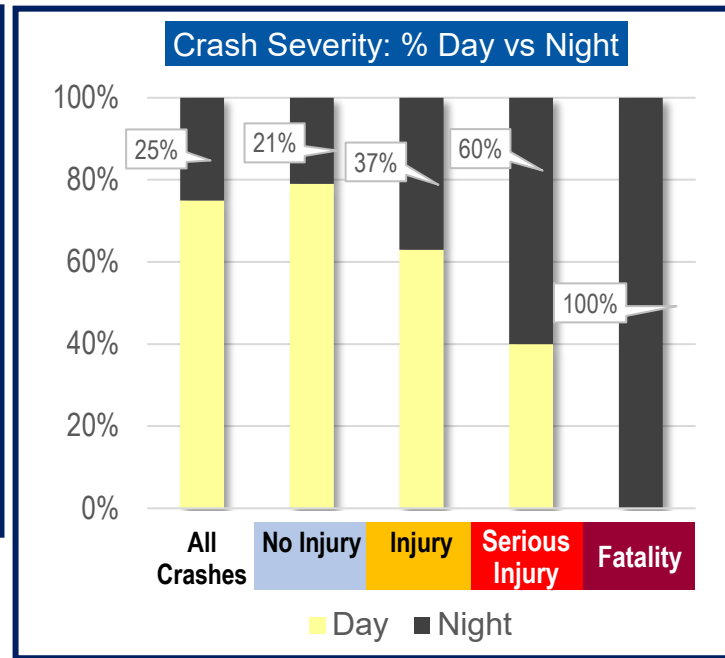
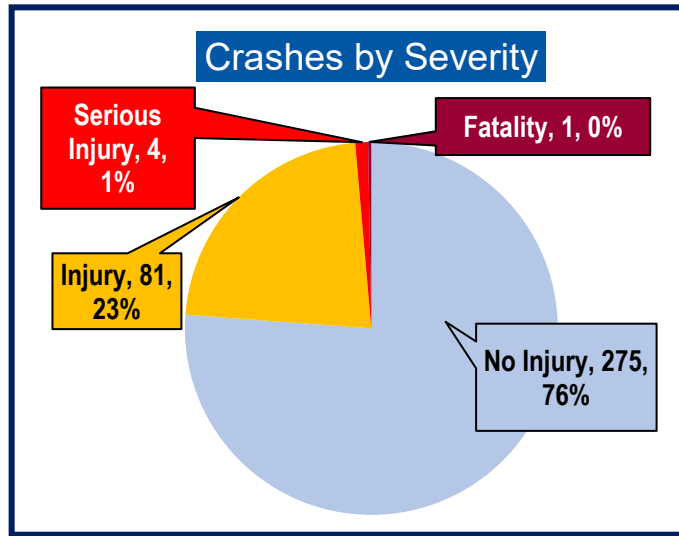
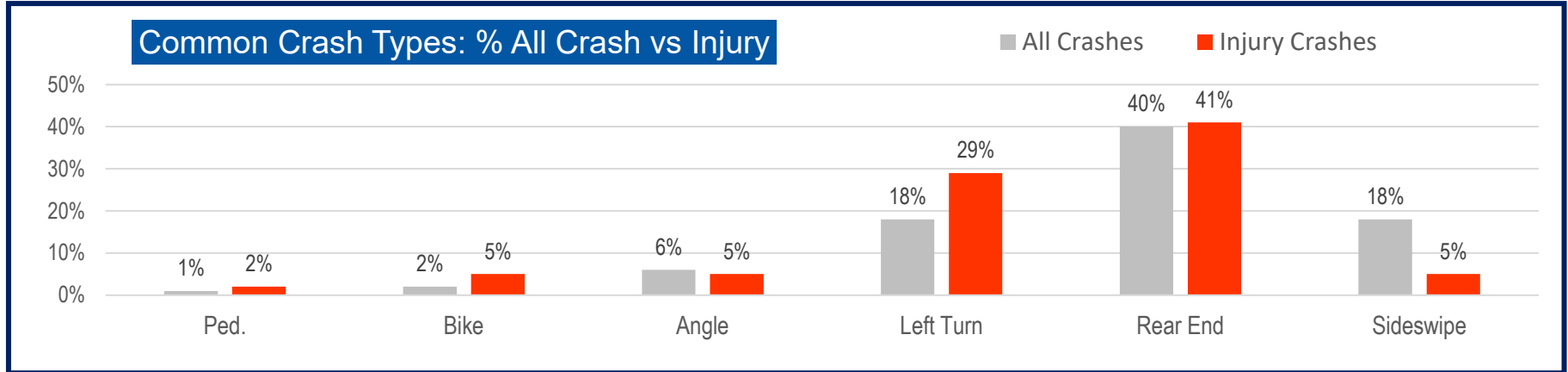
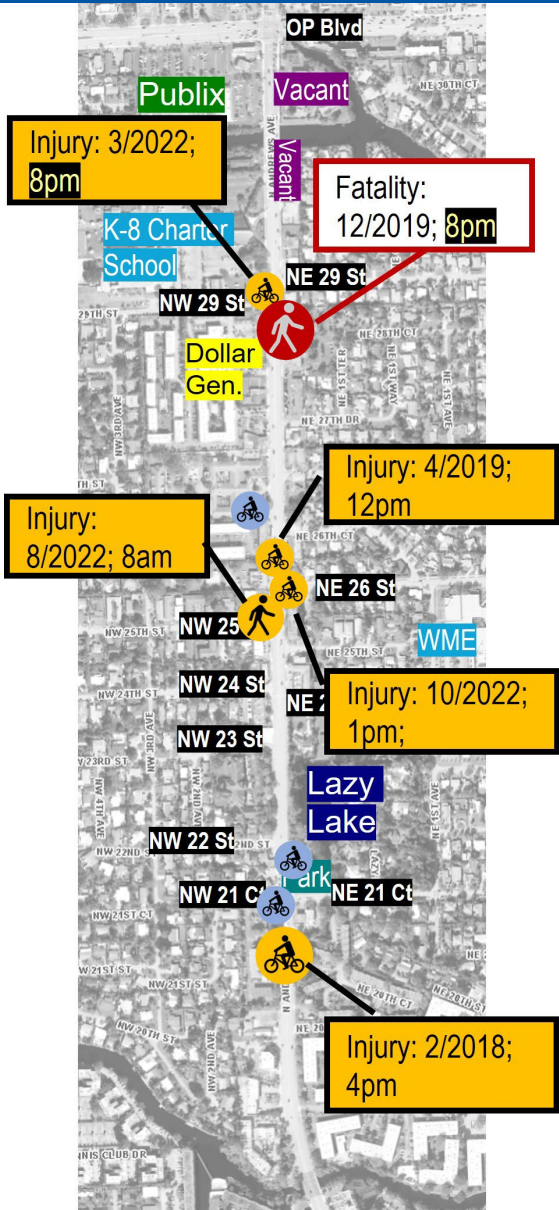


Crossing as an Elderly Person



5-Year Crash Data (2018 – 2022)

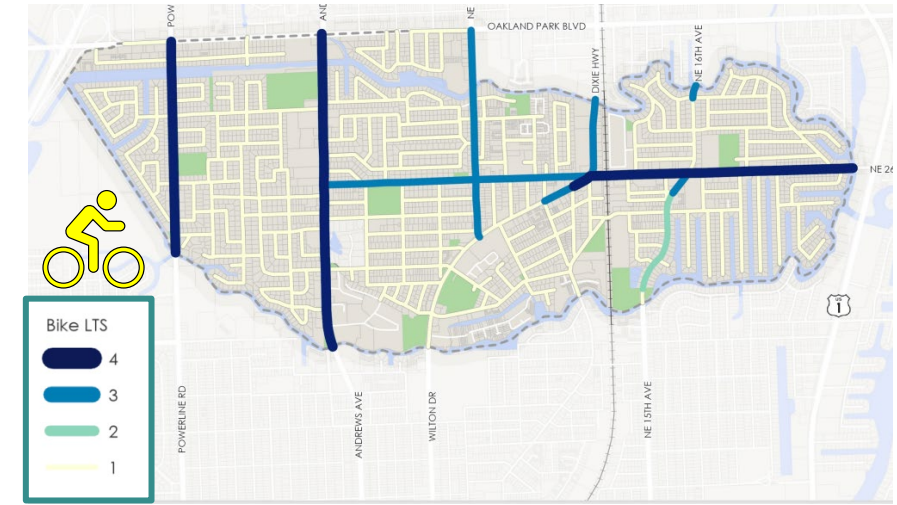
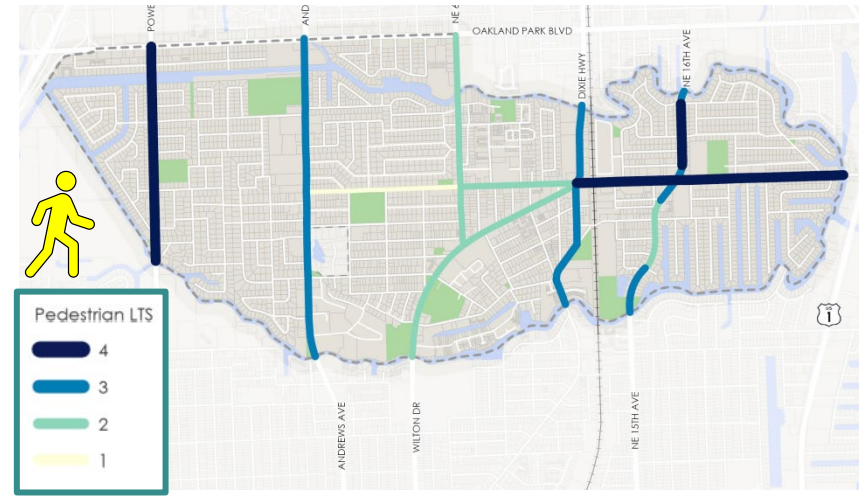
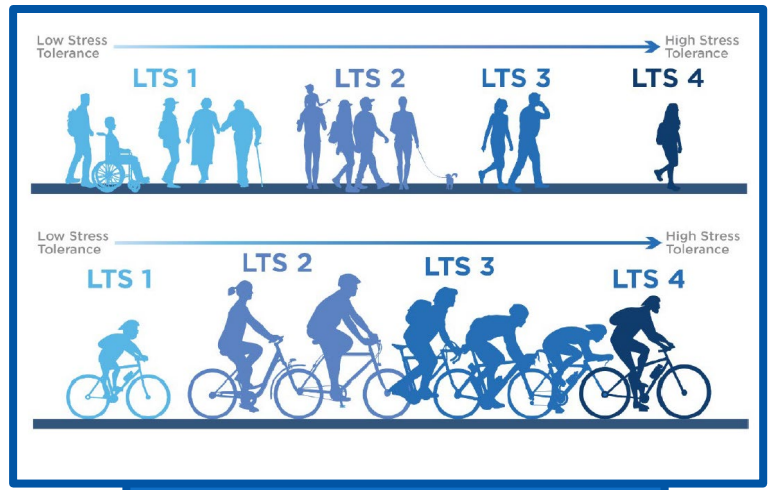
Example: Andrews Av = 361 Total Crashes (excluding OP Blvd)



35%
of Crashes at Night result in **Injuries**

Existing Conditions & Issues

Milestone #3: Existing Conditions & Issues (Citywide)



Level of Traffic Stress

- Measured by:

Number of Travel Lanes

Speed of Traffic

Number of Vehicles

Presence of Bike or Ped Facilities

Width of Facilities

Separation from Cars

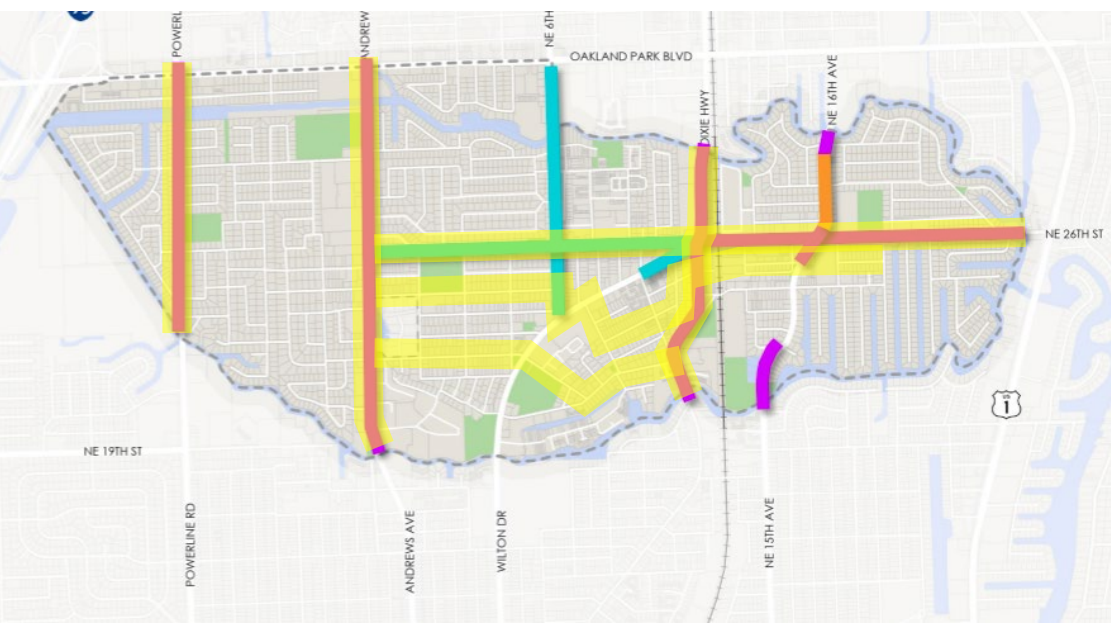
LTS 3 & 4 Streets

- Streets with a score of LTS 3 or LTS 4 act as barriers to walking and biking

LTS 3 / 4 Streets for Walking Only

LTS 3 / 4 Streets for Biking Only

LTS 3 / 4 Streets for Biking and Walking



Existing Conditions & Issues




Milestone #3: Existing Conditions & Issues (Intersection)

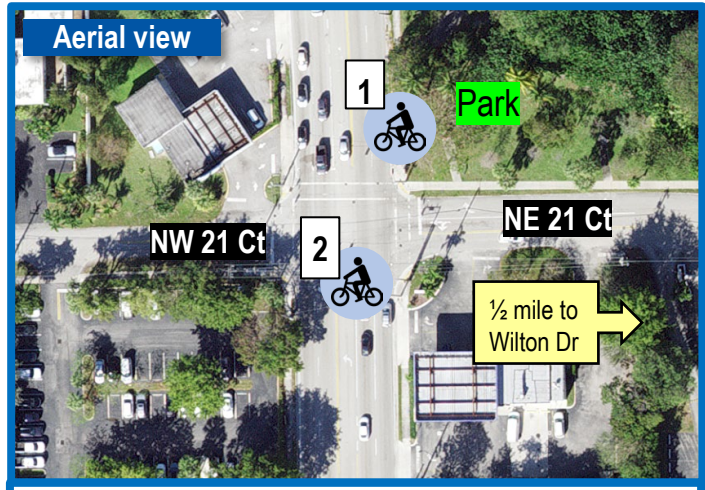
Example: Andrews Av @ NW/NE 21 Ct

County-owned ■ Biking LTS = 4 ■ Ped LTS = 3

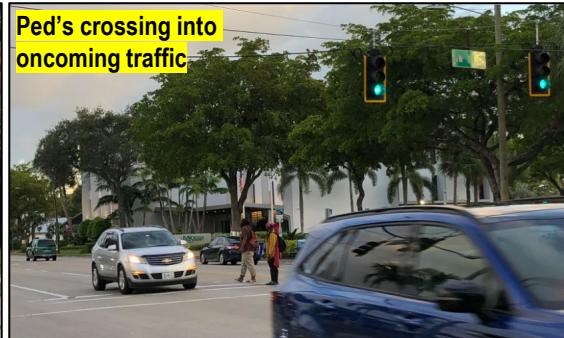
Summary of Existing Issues	
X	Speeding vehicles: 1 st traffic signal north of NE 16 St / approx. ½ mile
X	No / Missing bicycle facilities
X	Bicyclists riding on sidewalks (including E-Scooter)
X	Bicyclists riding against traffic
X	No / Missing sidewalks: No sidewalk in south ROW east of intersection, No sidewalk in north ROW west of intersection
X	Narrow sidewalks
X	Sidewalk Obstructions: Mechanical equip, FPL or signal poles
X	Long block length to cross to other side of street: 1 st crosswalk over Andrews Av north of NE 16 St (Ft Laud)
X	Pedestrians crossing not at crosswalks
X	Long crossing distance at crosswalks: No refuge, ped's cross 5-lanes
X	Pedestrian / Vehicle conflicts at crosswalks: WB to SB LT not yielding during ped phase
	Insufficient crossing time for crosswalks
X	Dark at night, especially for pedestrians: 1 streetlight, just south of intersection
X	Access Management issues: 1 st 4-way intersection south of OP Blvd; Only direct access from Westside neighborhood to Wilton Dr; All left turns permissive only
X	BCT Stops are missing pedestrian amenities / not ADA compliant
X	No wayfinding signage: Less than ½ mile to Wilton Dr & City Hall

18 Crashes from 2018 to 2022, within 150 ft of intersection (all directions) **9 Injury Crashes** (50% of all crashes)

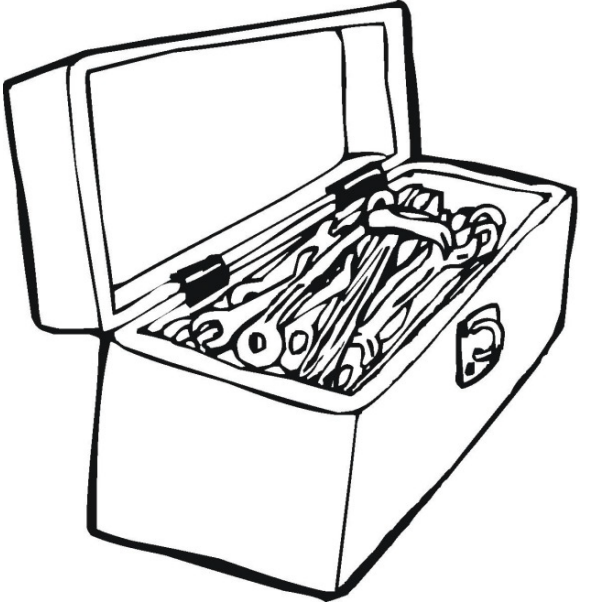
5 Injury Crashes due to SB to EB LT collisions  **5 Injury Crashes** involved NB vehicles  **2 Injury Crashes** occurred at night 



1. No Injury: 5/2019; 11 pm; Bicyclist rode NB in right shoulder; Struck by NB driver just north of intersection
 2. No Injury: 9/2018; 5 pm; Bicyclist in south crosswalk; struck by WB to SB LT vehicle



Prelim. Solutions



✓ **Identify solutions** from toolkit to address existing conditions and key issues






✓ **Review solutions:**

- City Staff Working Group (9/26)
- FDOT (10/12)
- Broward County (10/17)

✓ **Public Engagement:**

- City Commission Meeting (Nov 14)
- SurveyMonkey (Until Dec 1)

✓ **Refine Recommendations** based on feedback

-  **Improve Crossings of Higher Volume Roads**
-  **Slow Traffic on Neighborhood Streets**
-  **Redesign Streets to Match the Context**
-  **Update & Connect the Walking, Biking, and Scooting Network**
-  **Increase Access to Destinations (i.e. Wilton Dr & Community Parks)**

Learn More & Tell us what you think.....



The City of Wilton Manors
**TRANSPORTATION
MASTER PLAN**



Share **YOUR** Comments

www.surveymonkey.com/r/WM_TMP



- ✓ Presentation at November 14th City Commission Meeting
- ✓ SurveyMonkey (close Dec 1st)
- ✓ Community Meetings in late January / early February 2024
- ✓ <https://www.browardmpo.org/plans/city-of-wilton-manors>



Transportation Master Plan Presentation to CANA



<https://www.browardmpo.org/plans/city-of-wilton-manors>