



Move People & Goods | Create Jobs | Strengthen Communities

# MMTP Task 4

## Mid / Long-term Improvements

Staff Working Group - Monthly Meeting

November 16, 2022

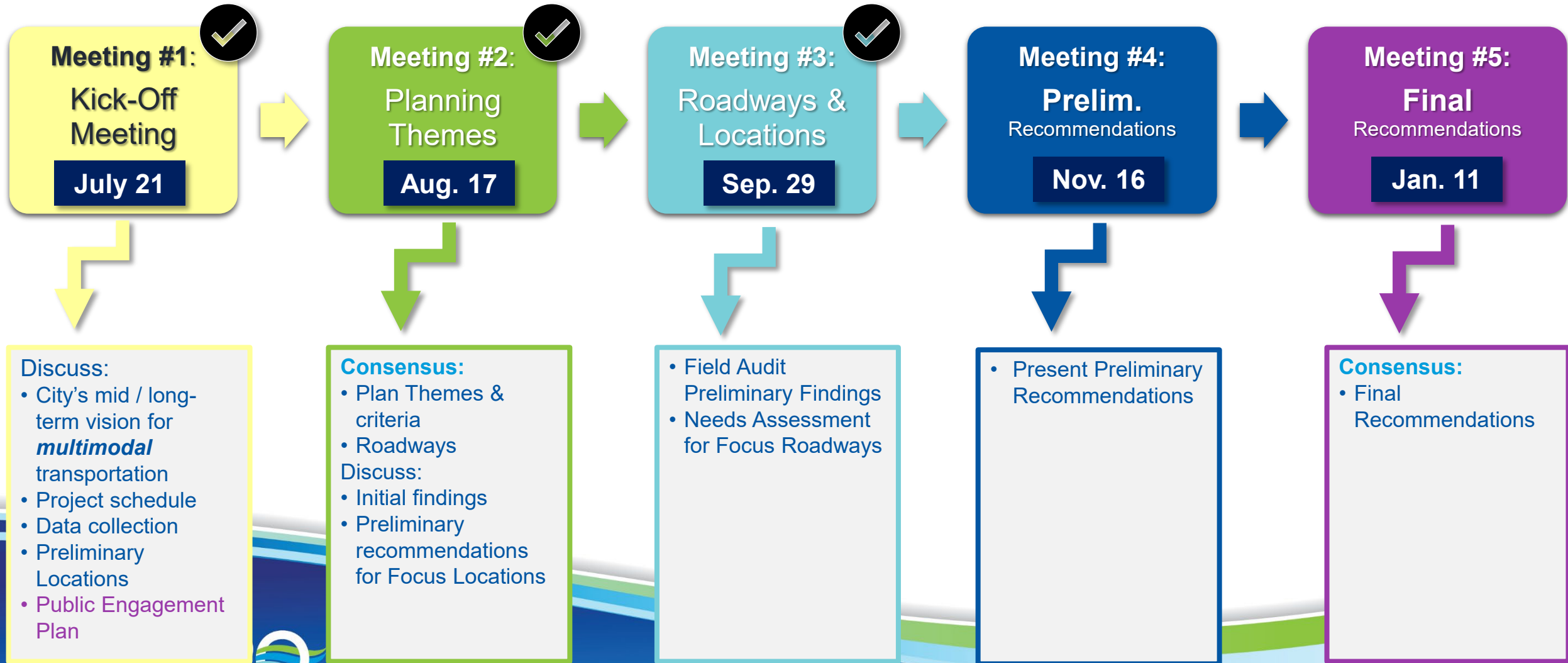
# Meeting Agenda

- Status
- Preliminary Recommendations
- Next Steps

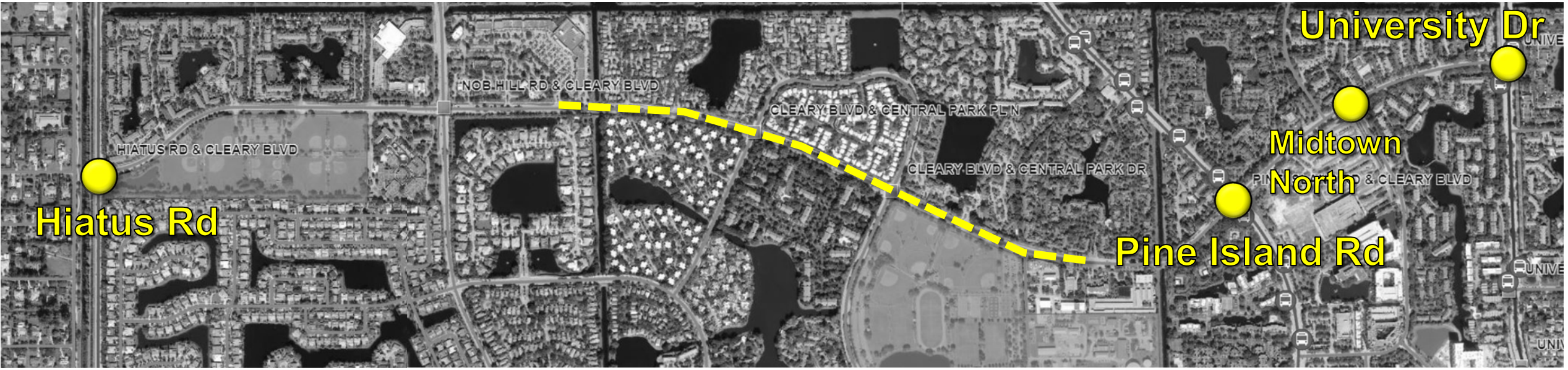
## Meeting Goal:

- Feedback on Preliminary Recommendations

# Project Schedule: Task 4 Meetings

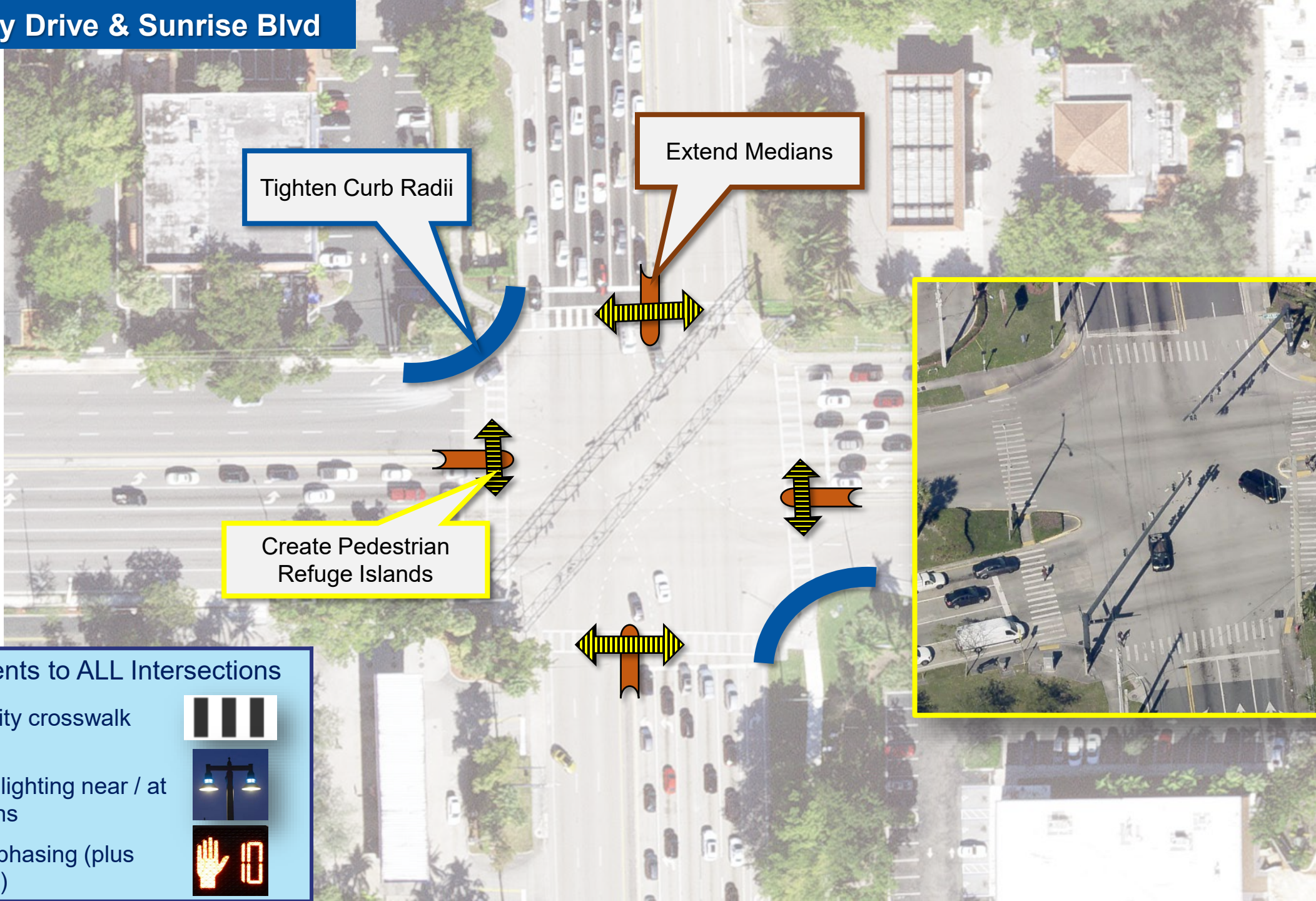


# Preliminary Recommendations



# University Dr

Vision: Connectivity to Midtown + Enhance Access Roads



Tighten Curb Radii

Extend Medians

Create Pedestrian Refuge Islands

## Improvements to ALL Intersections

- High visibility crosswalk markings
- Ped-Scale lighting near / at intersections
- LPI signal phasing (plus countdown)



West

East



Three Options



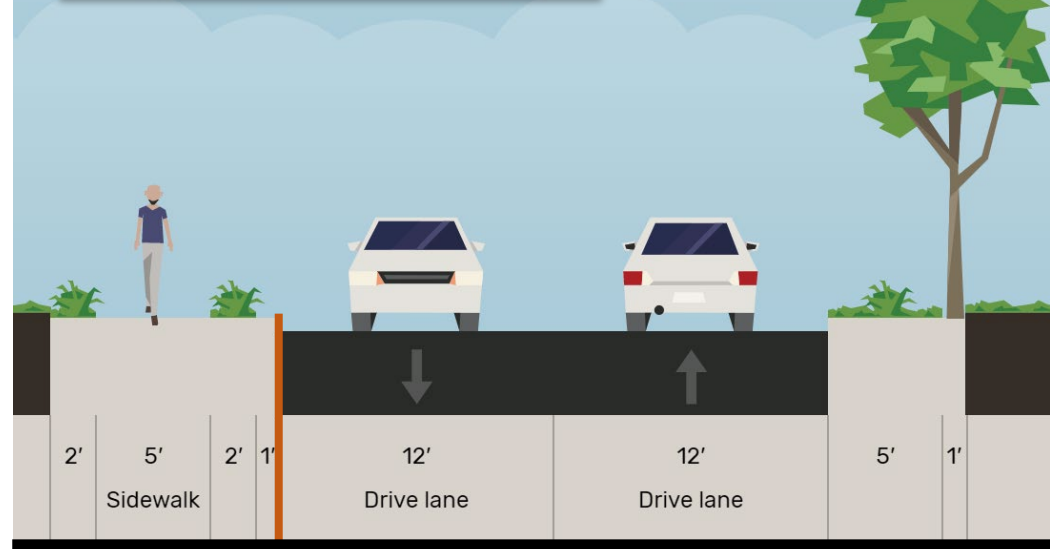
# University Drive: Access Rd



West

East

## Existing



## Option 1: Sharrows



- Sidewalk extended to curb
- Lanes narrowed with marked median
- Sharrow markings and bicycle signage installed



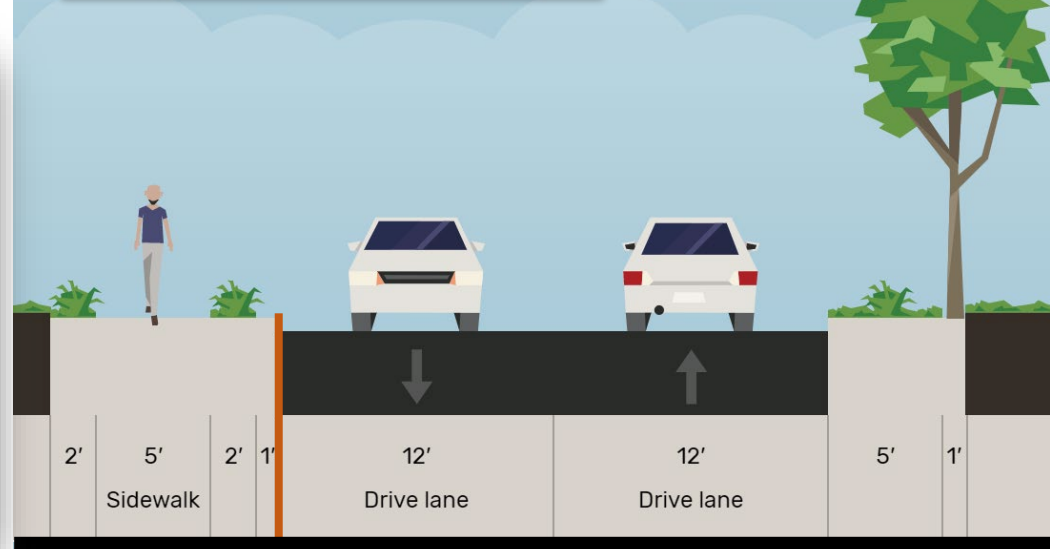
# University Drive: Access Rd



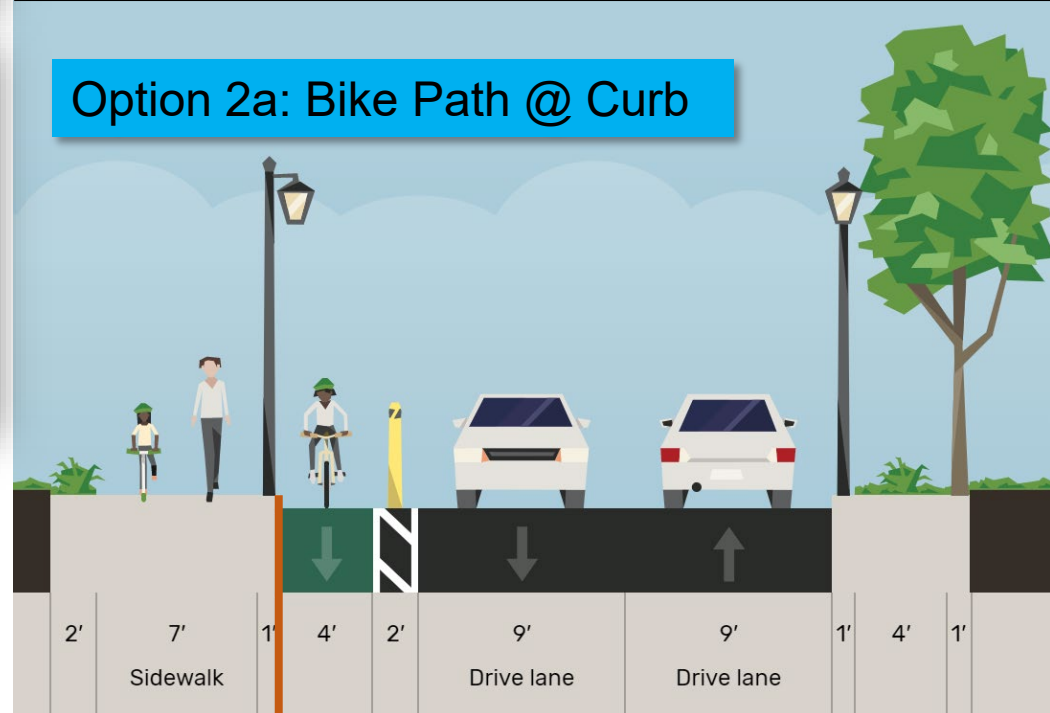
West

East

Existing



Option 2a: Bike Path @ Curb

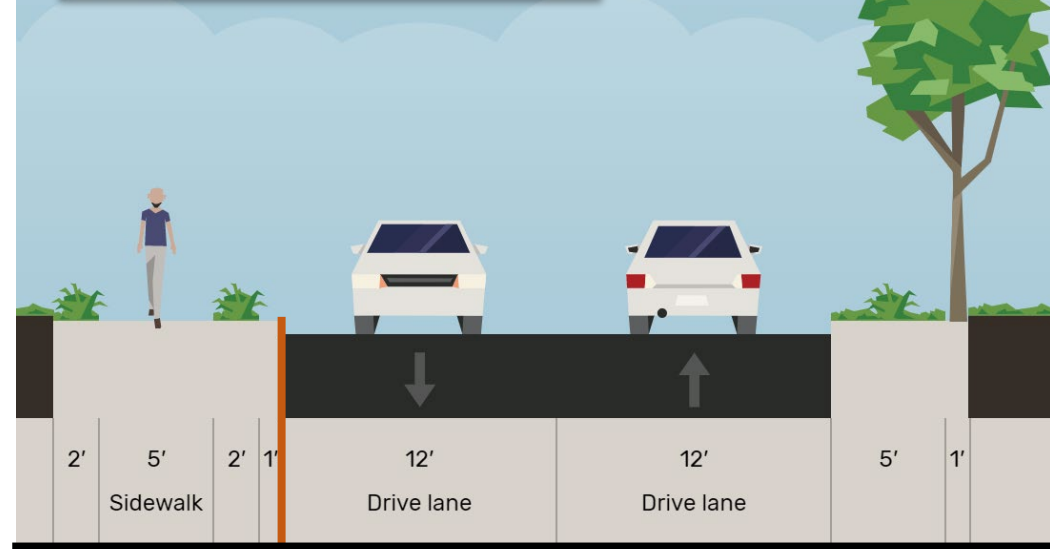


- Sidewalk extended to curb
- Lanes narrowed from 12 ft to 9 ft
- Lanes shifted east
- 4 ft bike lane added next to curb
- Bike lane protected by 2 ft buffer, with bollards

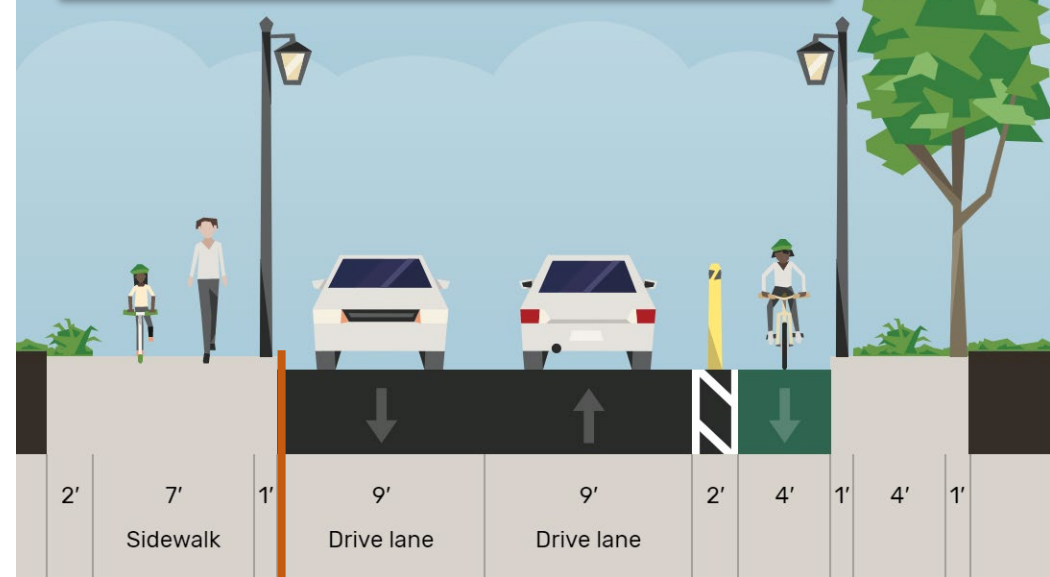
West

East

Existing



Option 2b: Bike Path @ University



- Sidewalk extended to curb
- Lanes narrowed from 12 ft to 9 ft
- 4 ft bike lane added next to landscaped area / east side of drive lanes
- Bike lane protected by 2 ft buffer, with bollards

# University Drive: Access Rd

Entrance to Parc Village from NW 17<sup>th</sup> Ct

NW 17<sup>th</sup> Ct

Holiday Inn

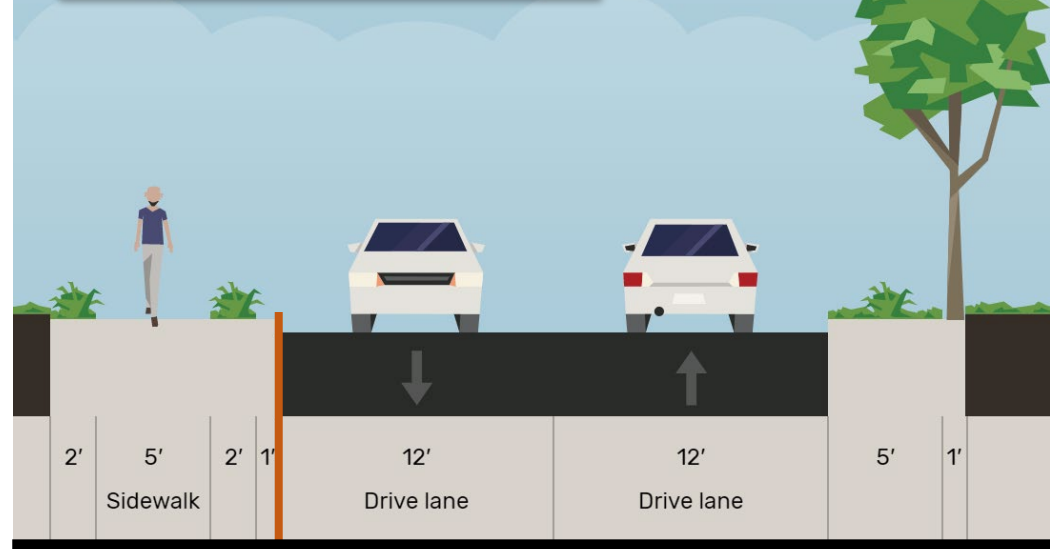
N. Marcano

S. Marcano

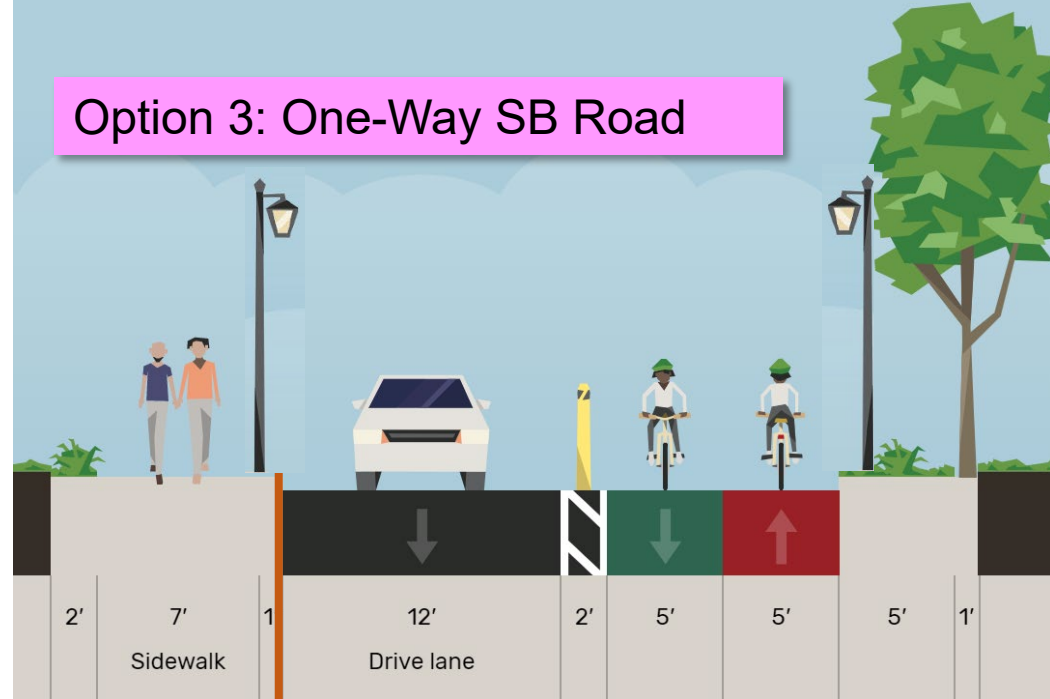
West

East

Existing

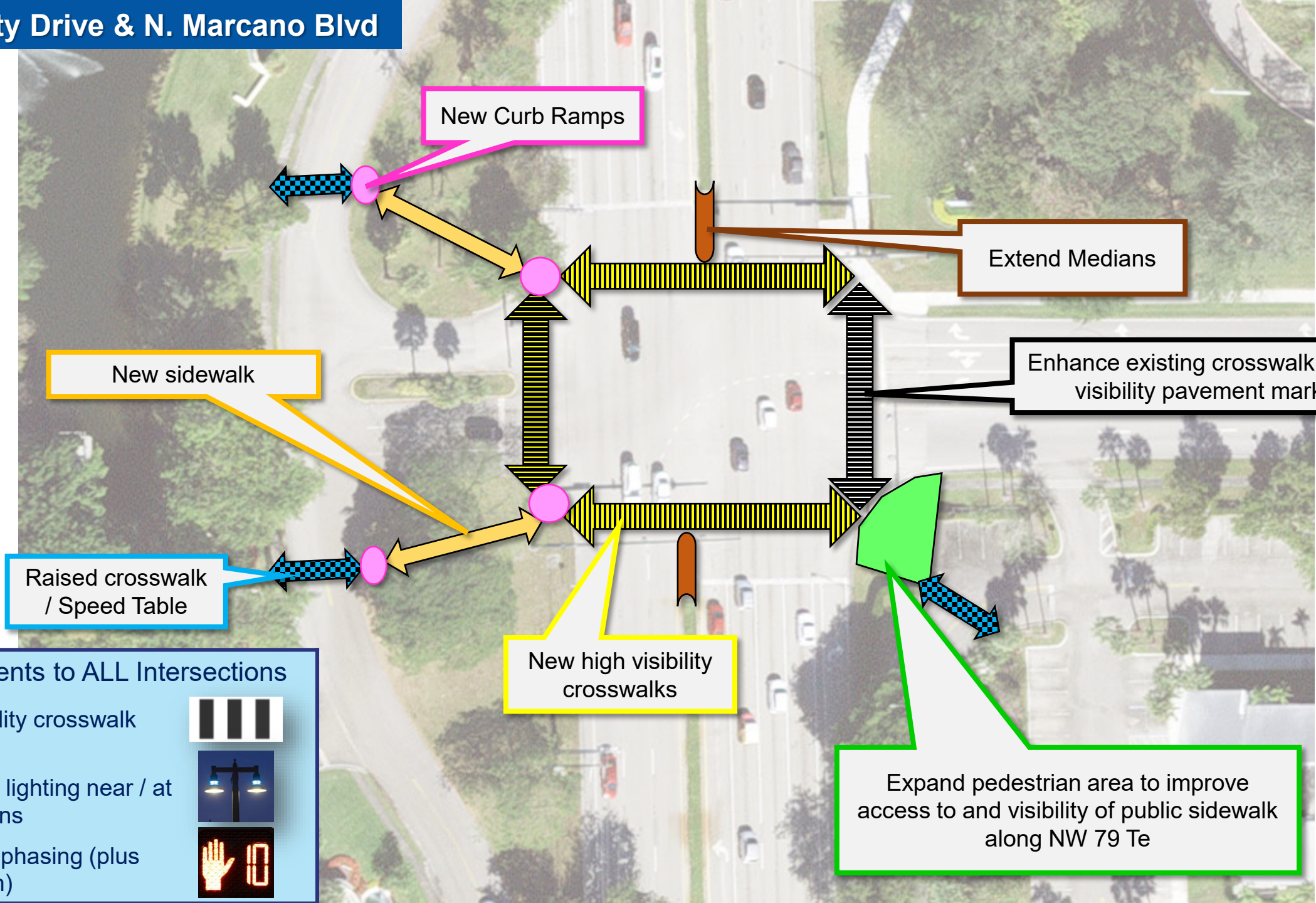


Option 3: One-Way SB Road



- Sidewalk extended to curb
- One 12 ft wide, SB lane only
- 10 ft wide cycle track replaces NB Lane (protected by 2 ft wide area)
- Would require S. Marcano Blvd to become signalized intersection





New sidewalk

New Curb Ramps

Extend Medians

Enhance existing crosswalk with high visibility pavement markings

Raised crosswalk / Speed Table

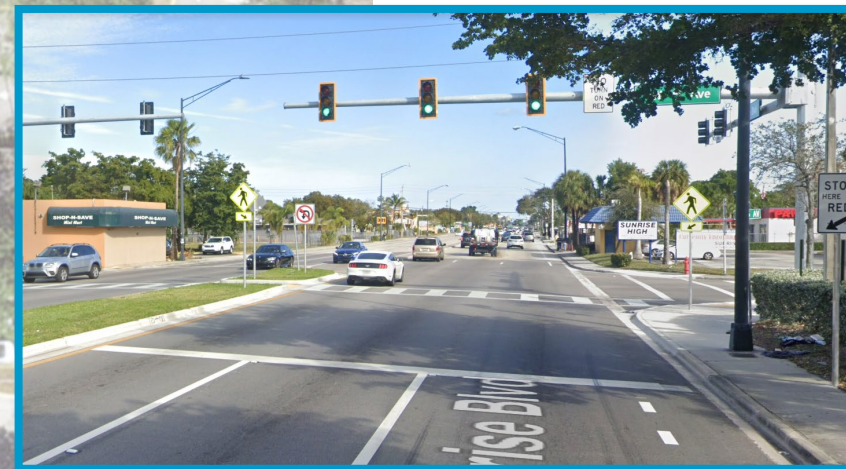
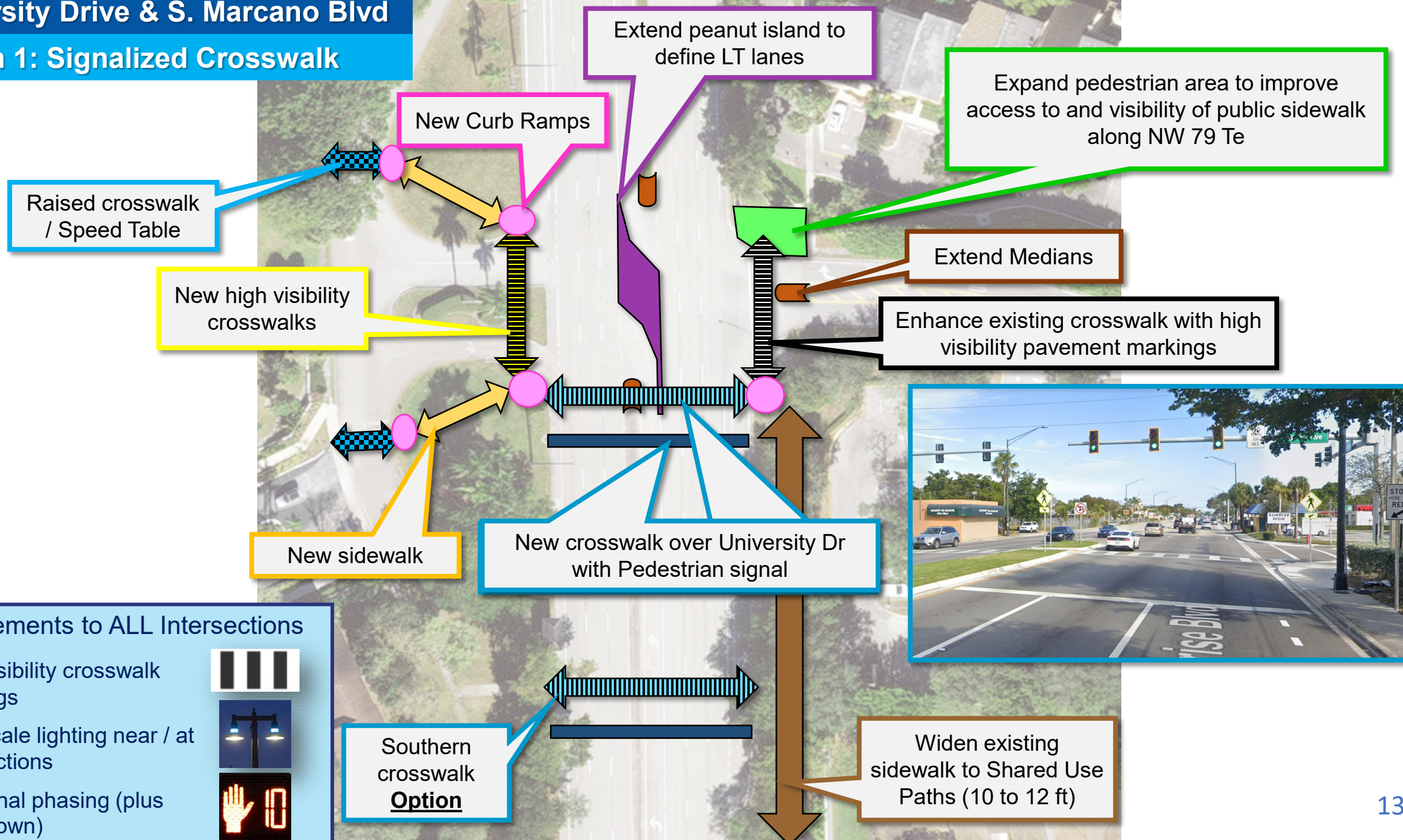
New high visibility crosswalks

Expand pedestrian area to improve access to and visibility of public sidewalk along NW 79 Te

**Improvements to ALL Intersections**

- High visibility crosswalk markings 
- Ped-Scale lighting near / at intersections 
- LPI signal phasing (plus countdown) 

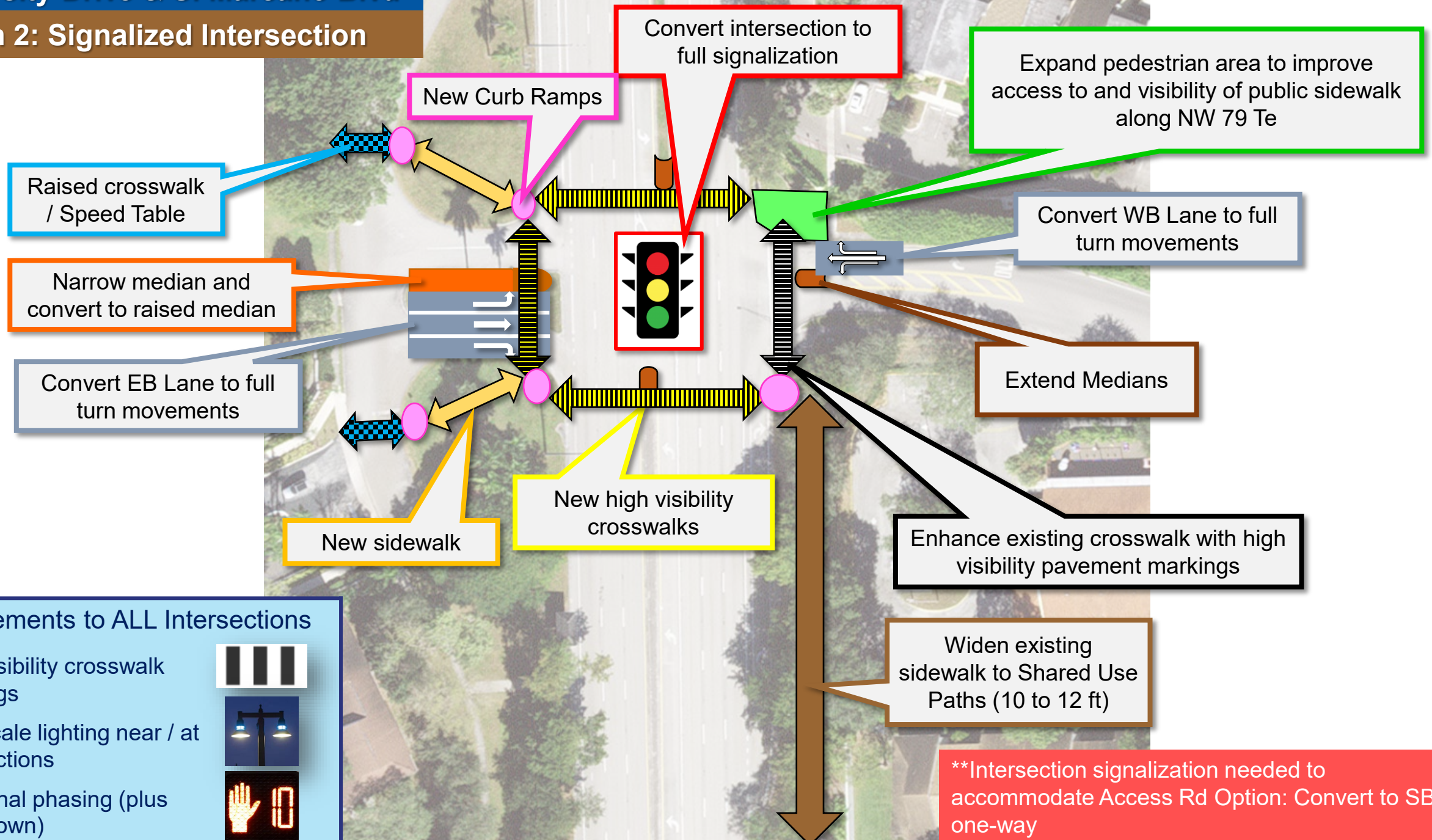
## Option 1: Signalized Crosswalk



### Improvements to ALL Intersections

- High visibility crosswalk markings
- Ped-Scale lighting near / at intersections
- LPI signal phasing (plus countdown)

**University Drive & S. Marcano Blvd**  
**Option 2: Signalized Intersection**



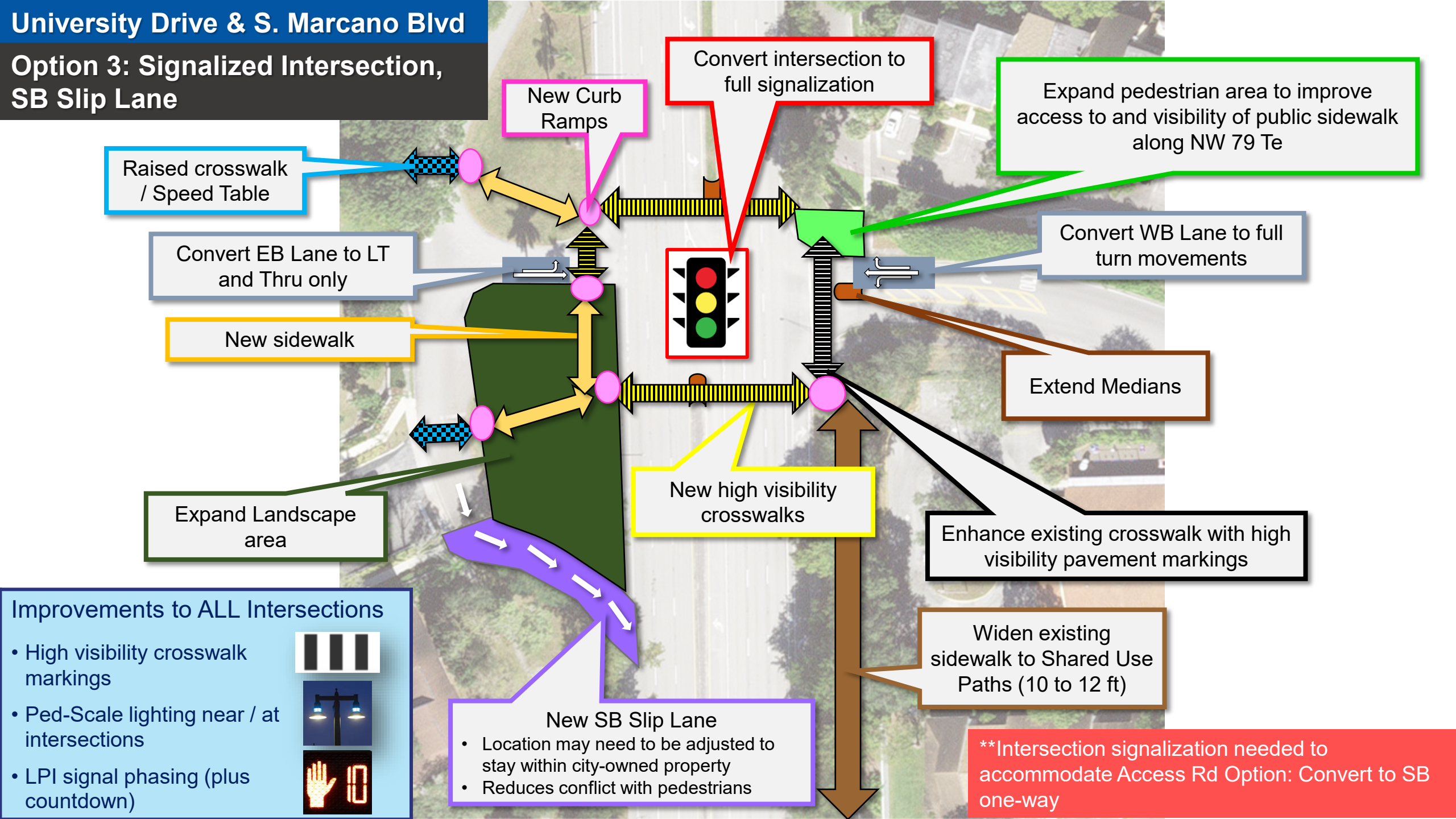
**Improvements to ALL Intersections**

- High visibility crosswalk markings 
- Ped-Scale lighting near / at intersections 
- LPI signal phasing (plus countdown) 

**\*\*Intersection signalization needed to accommodate Access Rd Option: Convert to SB one-way**

# University Drive & S. Marcano Blvd

## Option 3: Signalized Intersection, SB Slip Lane



Convert intersection to full signalization

Expand pedestrian area to improve access to and visibility of public sidewalk along NW 79 Te

Convert WB Lane to full turn movements

Extend Medians

Enhance existing crosswalk with high visibility pavement markings

Widen existing sidewalk to Shared Use Paths (10 to 12 ft)

New SB Slip Lane

- Location may need to be adjusted to stay within city-owned property
- Reduces conflict with pedestrians

New high visibility crosswalks

New Curb Ramps

Raised crosswalk / Speed Table

Convert EB Lane to LT and Thru only

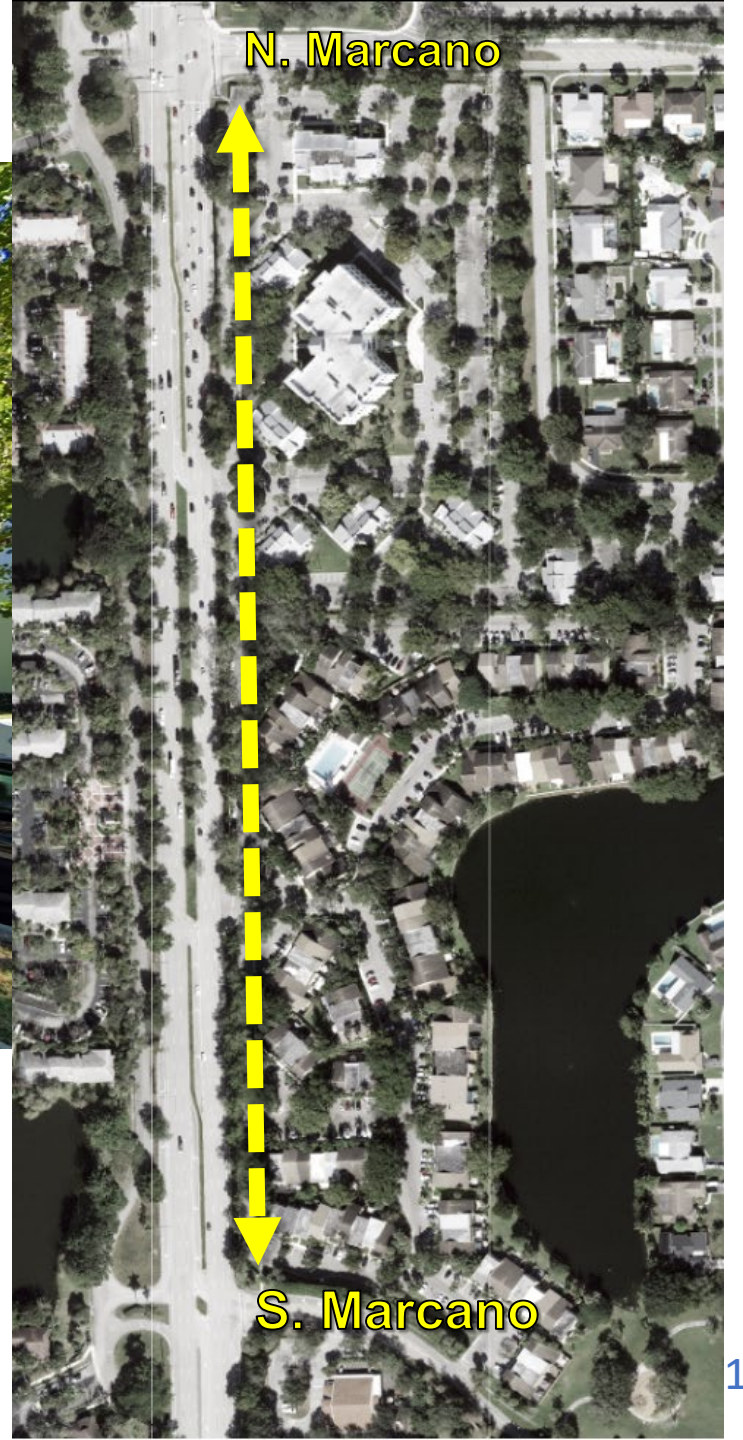
New sidewalk

Expand Landscape area

Improvements to ALL Intersections

- High visibility crosswalk markings
- Ped-Scale lighting near / at intersections
- LPI signal phasing (plus countdown)

\*\*Intersection signalization needed to accommodate Access Rd Option: Convert to SB one-way



**Options:**

- Use similar design as Access Rd
- OR
- Basic improvements: fill in sidewalk gaps, curb ramps, crosswalks, etc...



Widen existing sidewalks to Shared Use Paths (10 to 12 ft)

Expand pedestrian area to improve access to and visibility of Shared Use Path within southern ROW

Pedestrian Fence in medians to prohibit jay walking

Install wayfinding signage to direct ped crossings to southern crosswalk



## Improvements to ALL Intersections

- High visibility crosswalk markings
- Ped-Scale lighting near / at intersections
- LPI signal phasing (plus countdown)



Enhance existing crosswalk with high visibility pavement markings

## University Drive & NW 5<sup>th</sup> St

Extend Median

Install traffic delineators to improve visibility of marked median

## University Drive & NW 3<sup>rd</sup> St

Pedestrian Path to Public ROW

New high visibility crosswalk (with Ped Refuge if possible)

Expand pedestrian area to improve access to / visibility of public ROW / Green Tree Lane

## University Drive & NW 2<sup>nd</sup> St

New Curb Ramps

Enhance existing crosswalk with high visibility pavement markings

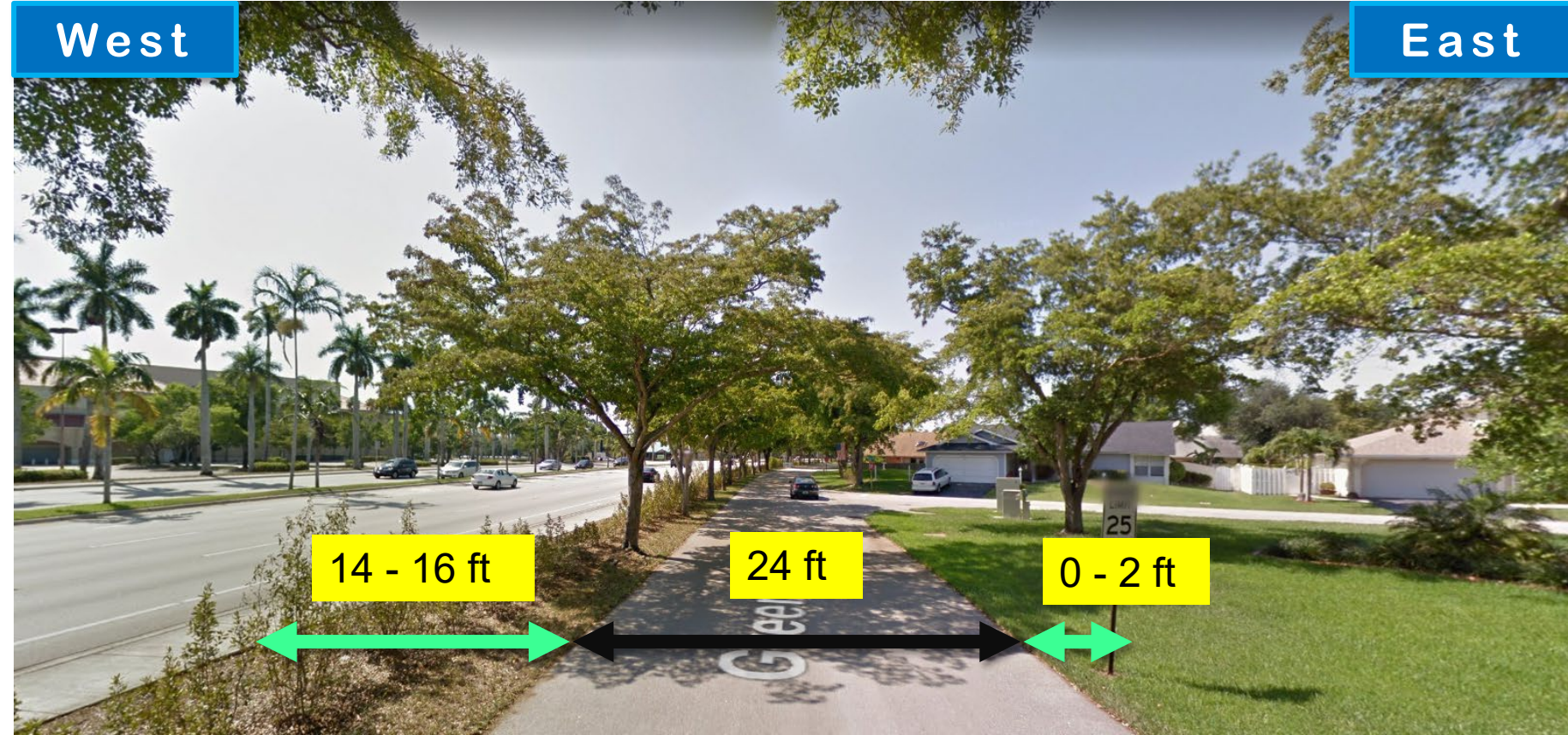
Widen existing sidewalk to Shared Use Paths (10 to 12 ft)

### Improvements to ALL Intersections

- High visibility crosswalk markings
- Ped-Scale lighting near / at intersections
- LPI signal phasing (plus countdown)



# University Drive: Green Tree Lane



# University Drive: Green Tree Lane

Existing

West

East



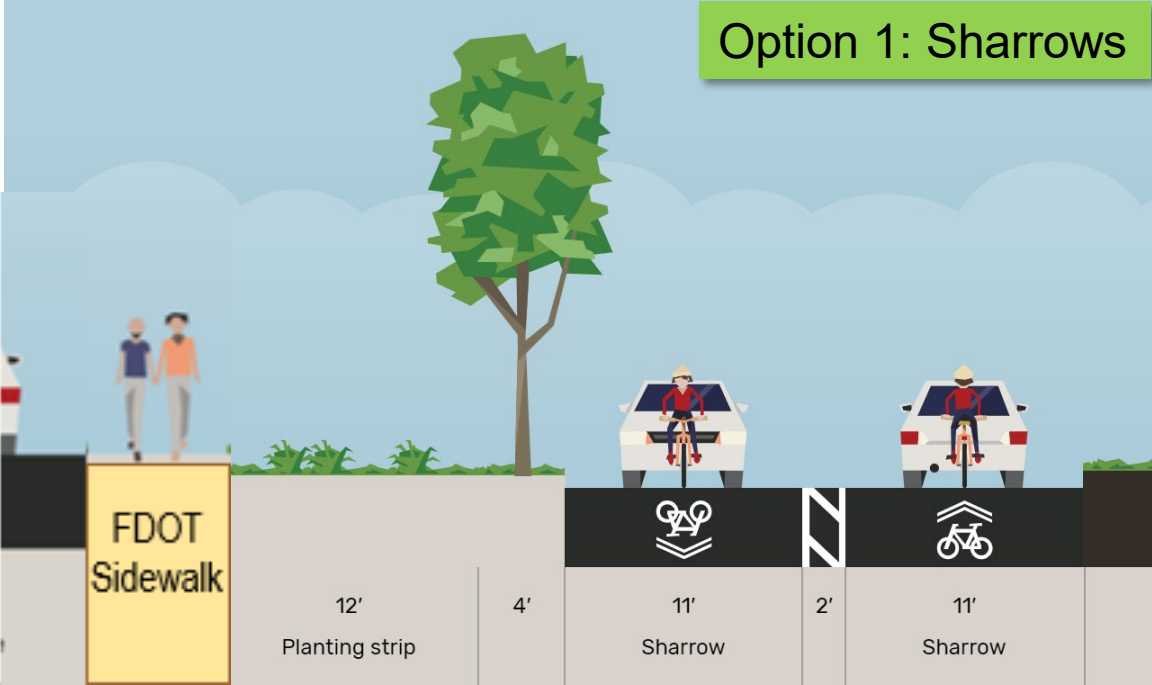
Existing

West

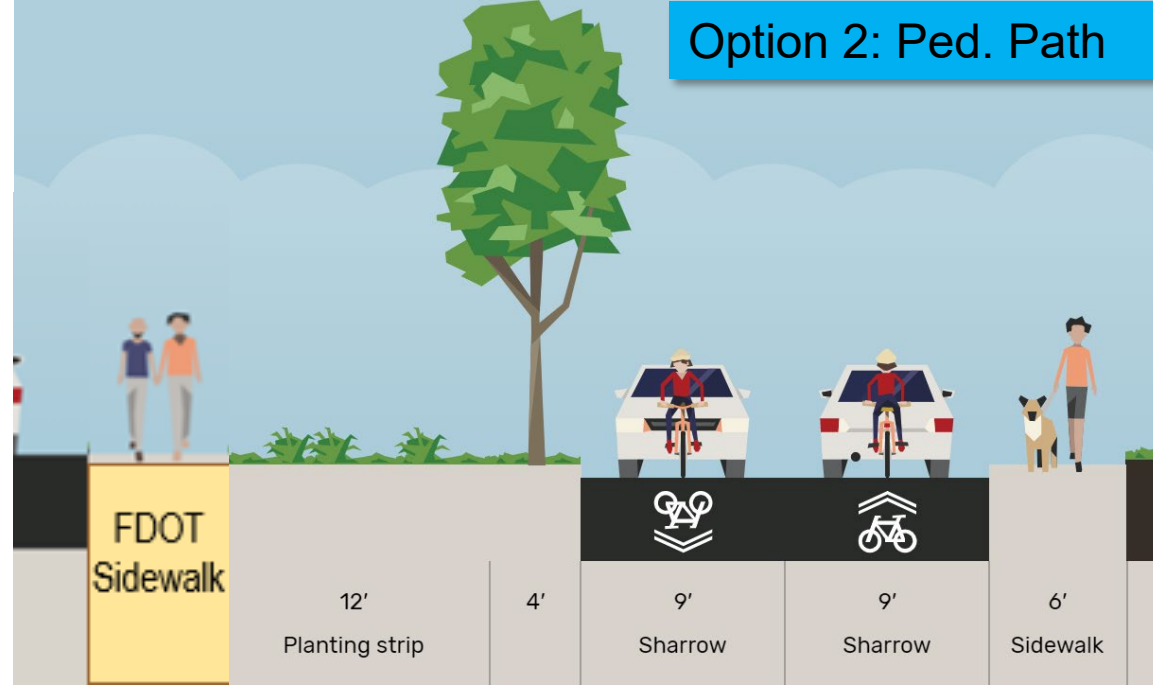
East



Option 1: Sharrows



Option 2: Ped. Path



# University Drive & Broward Blvd

Widen NW sidewalk to 8 to 10 ft (protect trees)

- Create pedestrian synergy area: "Midtown Entrance"
- Connect N/S Sidewalks to Bridge

Pedestrian Bridge

Enclose canal to create Linear Park - **Needed to accommodate Bridge landing**

Pedestrian Fence in medians to prohibit jay walking



Widen all crosswalks to 15 ft

Raised "pork chop" pedestrian refuge island / with raised crosswalk

## Improvements to ALL Intersections

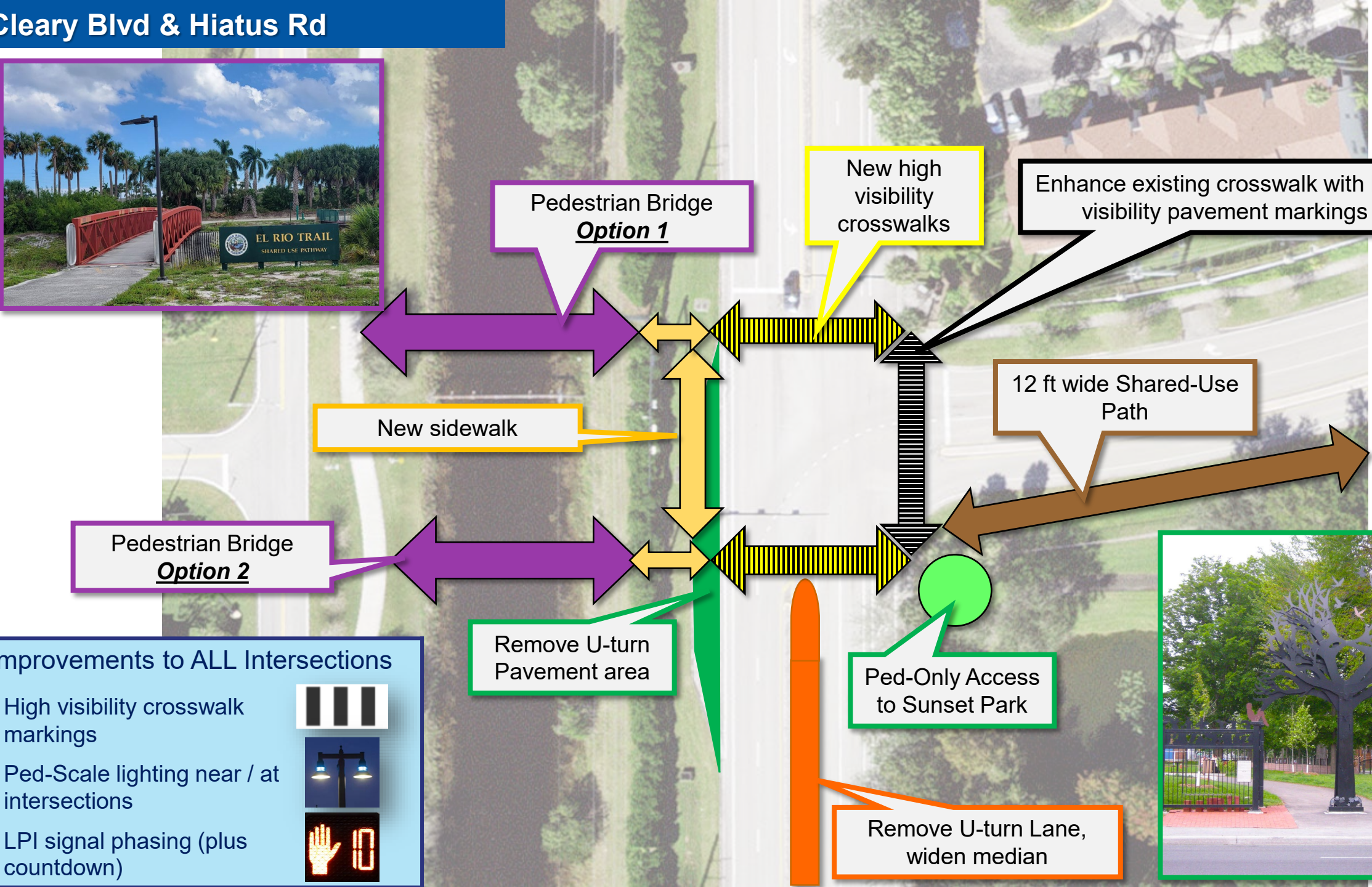
- High visibility crosswalk markings
- Ped-Scale lighting near / at intersections
- LPI signal phasing (plus countdown)



# Cleary Blvd

Vision: East / West Pedestrian Facility + Southern Synergy

# Cleary Blvd & Hiatus Rd



Pedestrian Bridge **Option 2**

Pedestrian Bridge **Option 1**

New sidewalk

New high visibility crosswalks

Enhance existing crosswalk with high visibility pavement markings

12 ft wide Shared-Use Path


Remove U-turn Pavement area

Ped-Only Access to Sunset Park

Remove U-turn Lane, widen median



**Improvements to ALL Intersections**

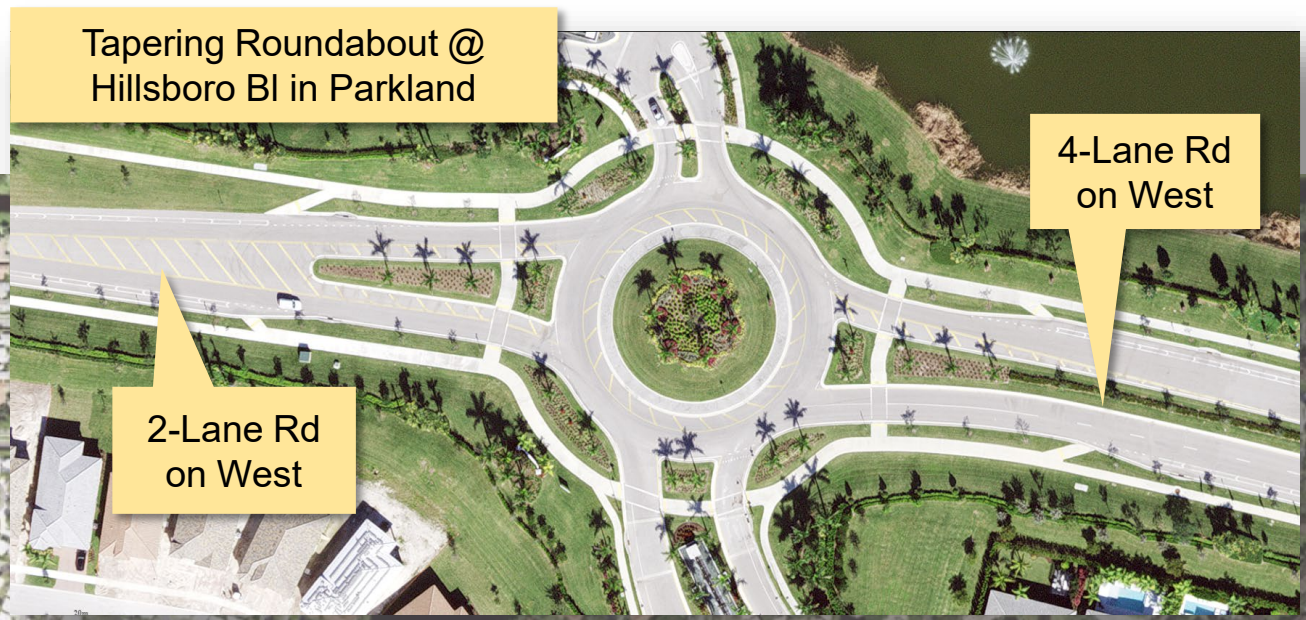
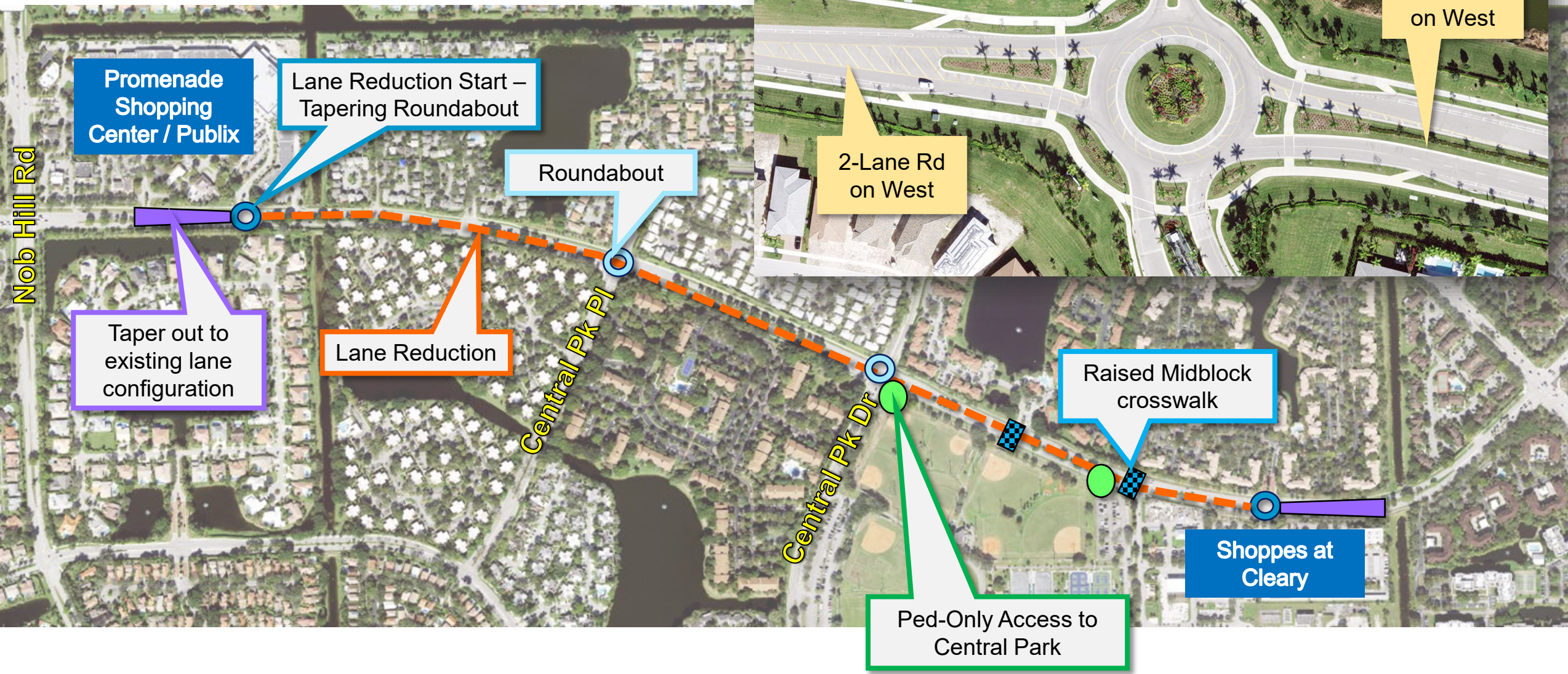
- High visibility crosswalk markings 
- Ped-Scale lighting near / at intersections 
- LPI signal phasing (plus countdown) 

# Cleary Blvd: Sunset Park area





# Cleary Blvd: Lane Reduction



North

South

# Cleary Blvd - Existing



## Option 1: Shared Use Paths

1. Sidewalks on north and south side are widened to Shared Use Paths (12 ft / 14ft)
2. Planting strip extended into former paved area
3. One 11-ft Drive Lane with shoulder



North

South

# Cleary Blvd - Existing



## Option 2: Protected Bike Lanes

1. Sidewalks on north and south side are widened to 10 ft
2. One 11-ft Drive Lane with shoulder
3. Remaining pavement converted to 6 ft wide, protected bike lane



North

# Cleary Blvd - Existing

South



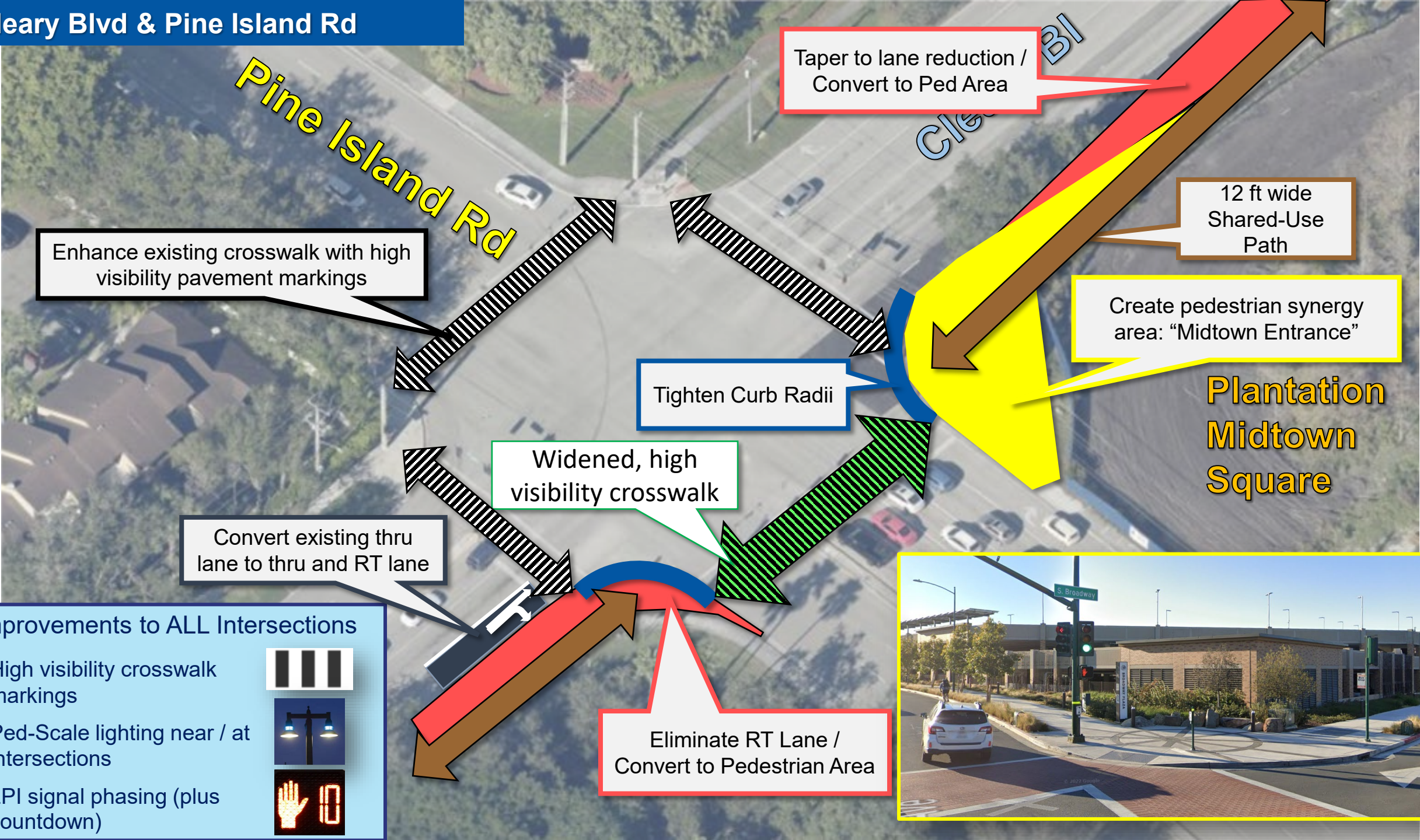
## Option 3: CycleTrack on South



1. Southern side widened to 8ft
2. 2-way 10-ft wide cycle track next to sidewalk

Made with **Streetmix**

# Clearly Blvd & Pine Island Rd



### Improvements to ALL Intersections

- High visibility crosswalk markings
- Ped-Scale lighting near / at intersections
- LPI signal phasing (plus countdown)



Laud West Dr

NW 82nd Ave

**Improvements to ALL Intersections**

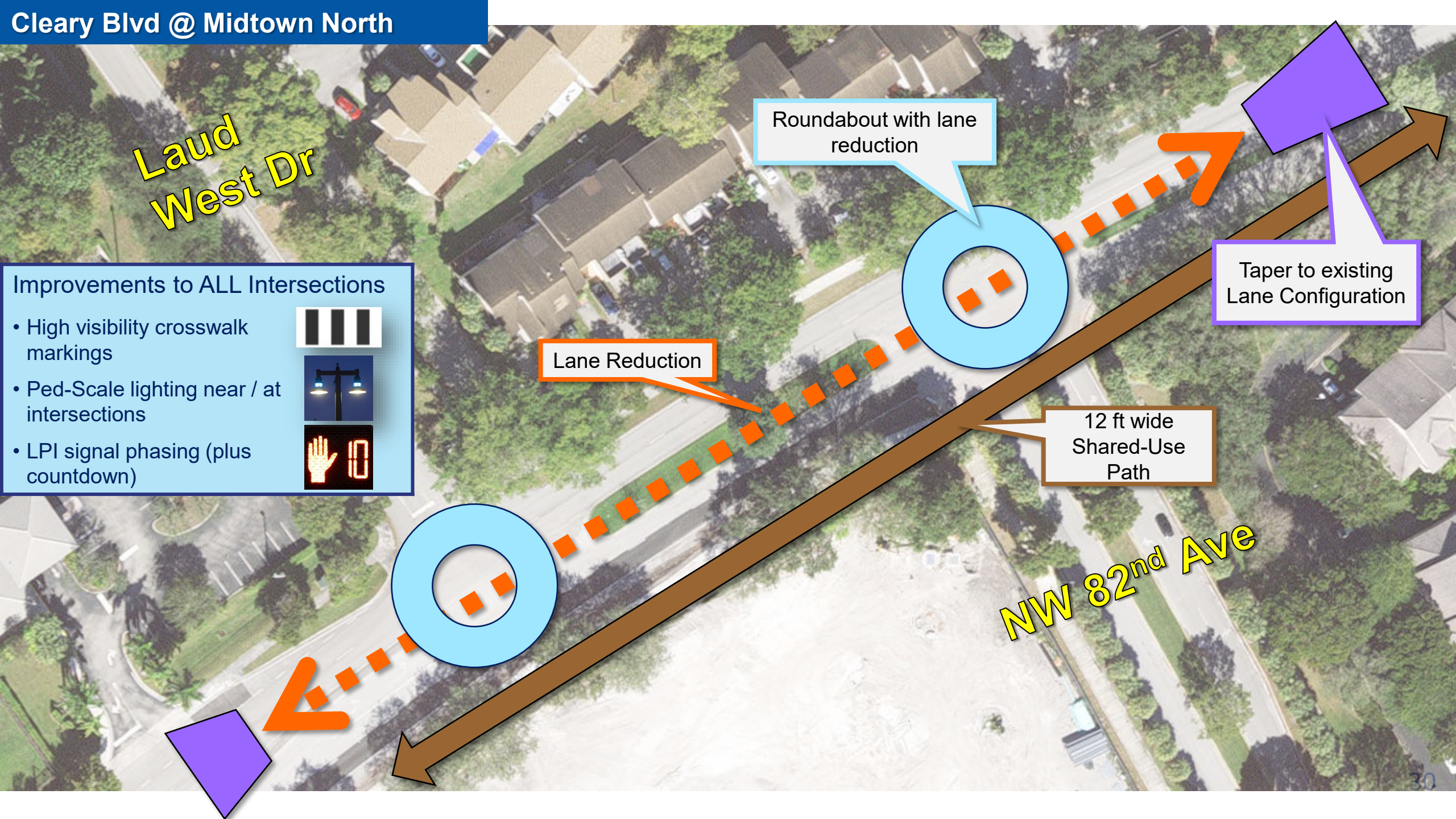
- High visibility crosswalk markings
- Ped-Scale lighting near / at intersections
- LPI signal phasing (plus countdown)

Roundabout with lane reduction

Lane Reduction

12 ft wide Shared-Use Path

Taper to existing Lane Configuration



Lauderdale W Drive



Cleary Blvd.

NW 82nd Ave.

Plantation Midtown Square Development

# Next Steps

- Schedule Meetings with facility owners (Broward County, FDOT) – December / January 2023
- Meeting #5 - Final Recommendations - January 11, 2023
- Coordinate *MMTP* Public Outreach
  - Rock The Park @ Central Park - Feb 3, 2023
  - Movies in the Path @ Plantation Community Center – Jan 20, 2023
  - Advisory Board Meetings
- Assist City with *Project-Specific* Public Outreach
  - HOA meetings? Community Meetings?





Move People & Goods | Create Jobs | Strengthen Communities

# MMTP Task 4 Mid / Long-term Improvements

## Staff Working Group - Monthly Meeting

November 16, 2022