



Move People & Goods | Create Jobs | Strengthen Communities

MMTP Phase 2

Mid / Long-term Improvements

Meeting with Broward County

January 4, 2023

Meeting Agenda

- Introductions
- Overall Status of MMTP
- Recommended Improvements: County Owned Facilities
- Recommended Improvements: City Owned Facilities
- Ultimate Buildout Recommendation
- Next Steps
- Cleary Blvd RSA
- Q&A / Discussion

GOAL: Build Support for City's Vision for Cleary Blvd

- ✓ Continued collaboration with facility owner
- ✓ Share Recommended improvements
- ✓ Identify deviations
- ✓ Q&A



Introductions

- Broward MPO Staff
- City of Plantation Staff
- Broward County Staff

Broward County Collaboration

- 4/1/2022: TEAMS Mtg – Short-term Recommendations for Nob Hill Rd and Cleary Blvd
- 9/20/2022: University Dr Walking Audit– Broward Bl to NW 5th St
- 9/23/2022: Cleary Bl Walking Audit – Hiatus Rd to Pine Island Rd
- 10/4/2022: TEAMS Mtg –Needs Assessment for County-owned intersections along Cleary Blvd



MMTP

Phases & Status

Phase 1: Short-term Improvements

- Themes: Safety, Traffic Calming, Midtown Connectivity
- Focused on eight city-owned roadways (***including Cleary Blvd***)
- ✓ Report complete in Summer 2022

Phase 2: Mid/Long-term Improvements

- Themes: Connectivity and Strategic
- Focus on two corridors (**Cleary Blvd** and University Dr)

Plan Kick-Off

Aug. 21

High-Level Needs Assessment



Short-term Improvements



Technical Memo #1



Corridor Needs Assessment



Here!!

Mid- and Long-term Improvements

Technical Memo #2

MMTP Phase 2: Project Schedule

SWG Meetings



Deliverables



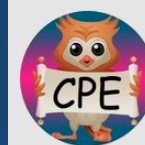
Why Cleary Blvd?

City's Vision for Cleary Blvd:

- ❖ Multimodal Corridor providing citywide east/west connectivity
- ❖ Separated, protected, continuous, and convenient pedestrian facilities



- ✓ City-owned East/West corridor that connects greenways, parks, schools, neighborhood retail and amenities, and Midtown Plantation
- ✓ Opportunity to connect Plantation Acres to Cleary Blvd
- ✓ Current & Future excess capacity
 - 2021 AADT = 9,200
 - West of Nob Hill Rd 2021 AADT = 7,100
 - LOS C
 - No vacant parcels and/or redevelopment parcels
- ✓ Roadway dead-ends at University Dr and Hiatus Rd
- ✓ City is planning for a Central Park Master Plan update



Central Park Elementary
Broward County Public Schools










PLANTATION MIDTOWN SQUARE
PLANTATION



Cleary Blvd: General Recommendations

Preliminary Phase



-  Pedestrian Bridge
-  Intersection Improvements (High-Visibility Crosswalks, Ped-Scale Lighting, Wayfinding Signage)
-  Lane Repurposing
-  Roundabouts
-  Pedestrian Connectivity to Park (Mid-block crosswalks, Raised Crosswalks, Ped-Only Park Entrances)
-  Quick Build
-  Shared-Use Path

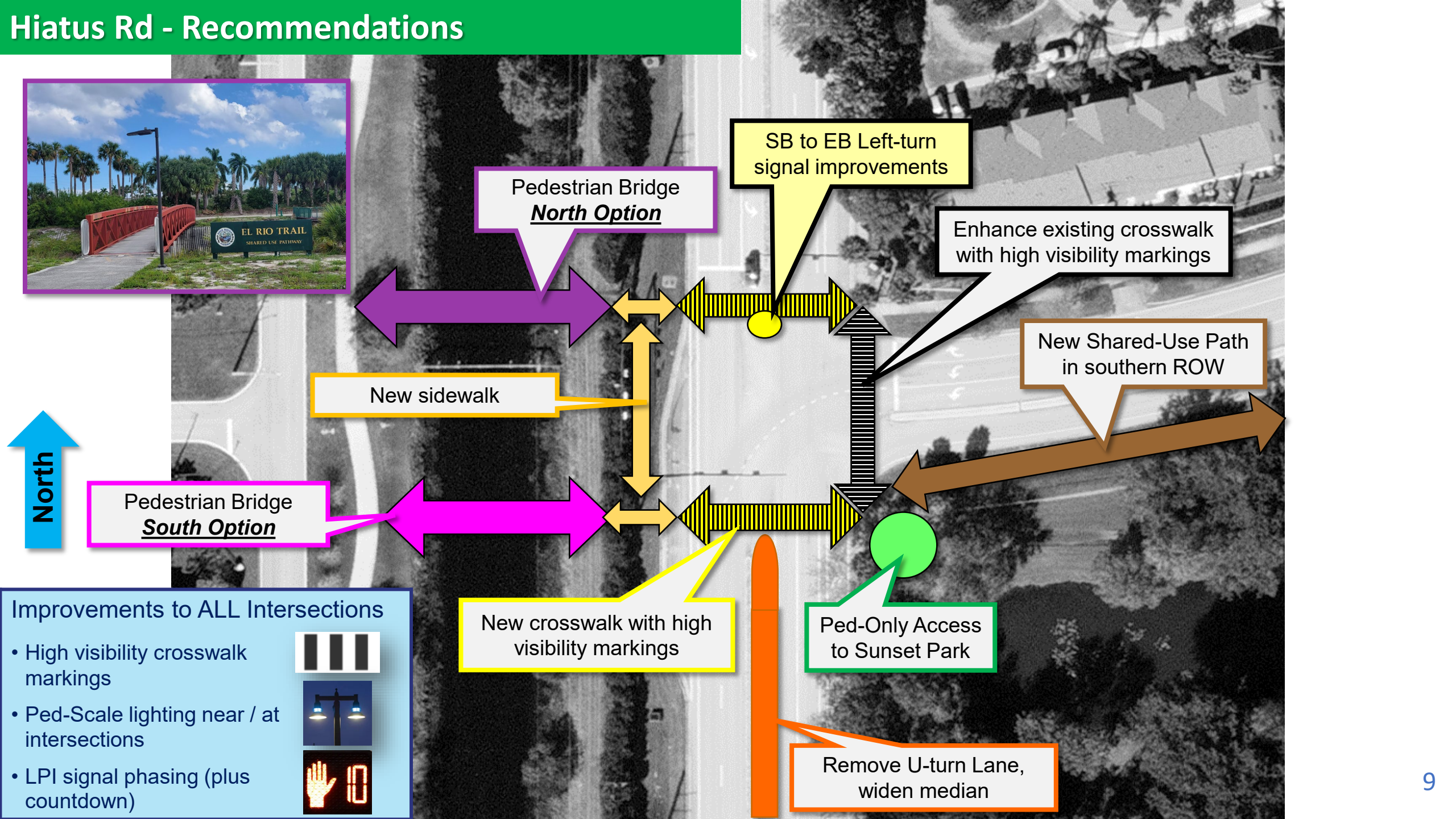
Recommendations

County-owned Intersections:

1. Hiatus Rd
2. Pine Island Rd



Hiatus Rd - Recommendations



Pedestrian Bridge
North Option

SB to EB Left-turn
signal improvements

Enhance existing crosswalk
with high visibility markings

New Shared-Use Path
in southern ROW

New sidewalk

Pedestrian Bridge
South Option

New crosswalk with high
visibility markings

Ped-Only Access
to Sunset Park

Remove U-turn Lane,
widen median

Improvements to ALL Intersections

- High visibility crosswalk markings
- Ped-Scale lighting near / at intersections
- LPI signal phasing (plus countdown)



Recommendations

City-Owned Locations (Preliminary Phase):

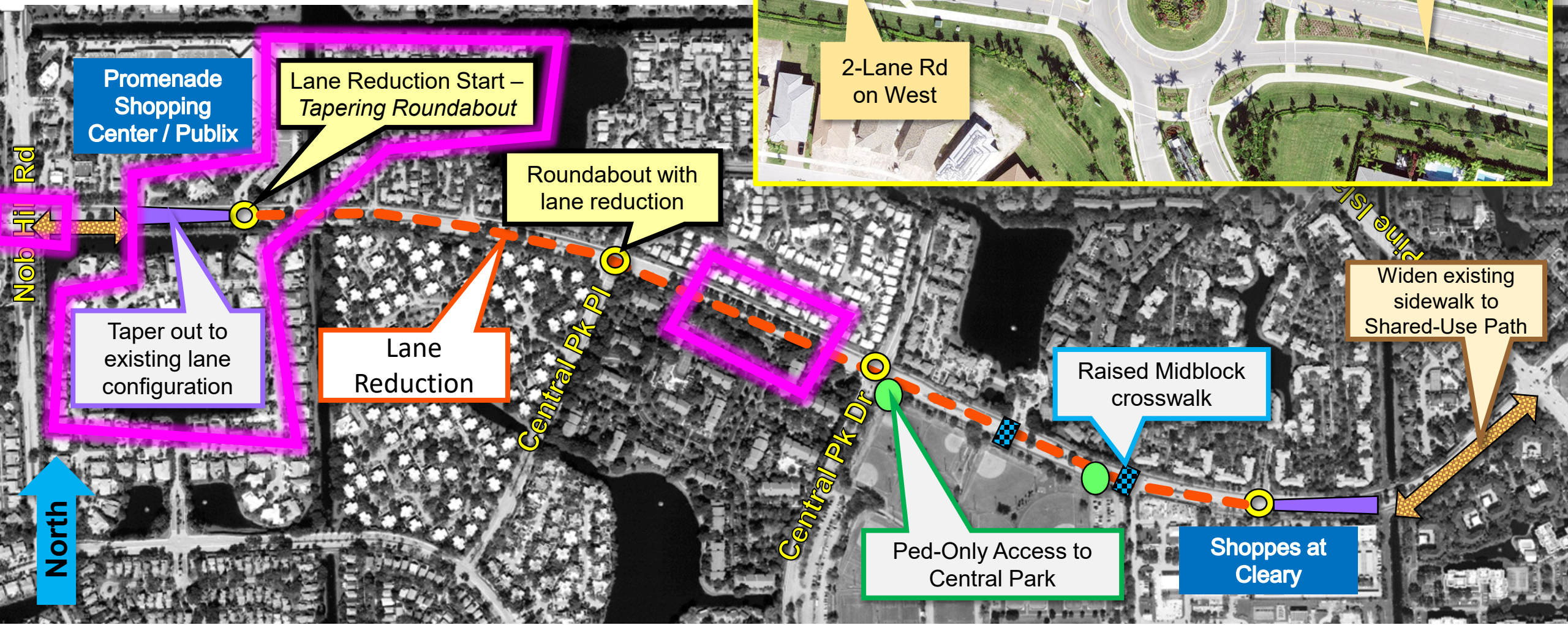
1. Nob Hill Rd to Pine Island Rd
2. Pine Island Rd to University Dr

State-Owned Locations (Preliminary Phase):

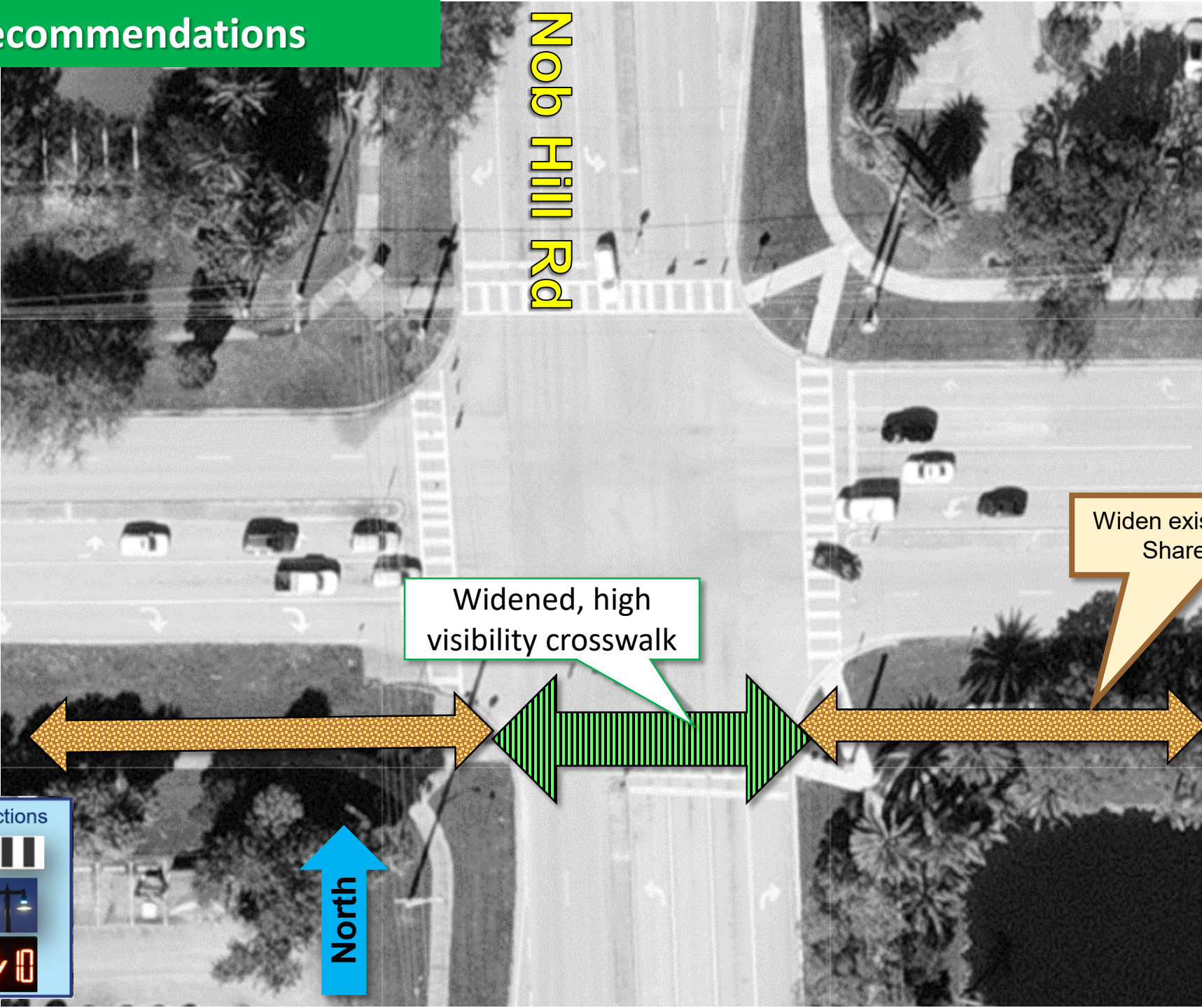
1. University Drive



Nob Hill Rd to Pine Island Rd: Recommendations



Nob Hill Rd - Recommendations



Widen existing sidewalk to Shared-Use Path

Widened, high visibility crosswalk


Improvements to ALL Intersections


- High visibility crosswalk markings
- Ped-Scale lighting near / at intersections
- LPI signal phasing (plus countdown)





East entrance at Plantation Promenade


Tapering Roundabout

 Pedestrian Path

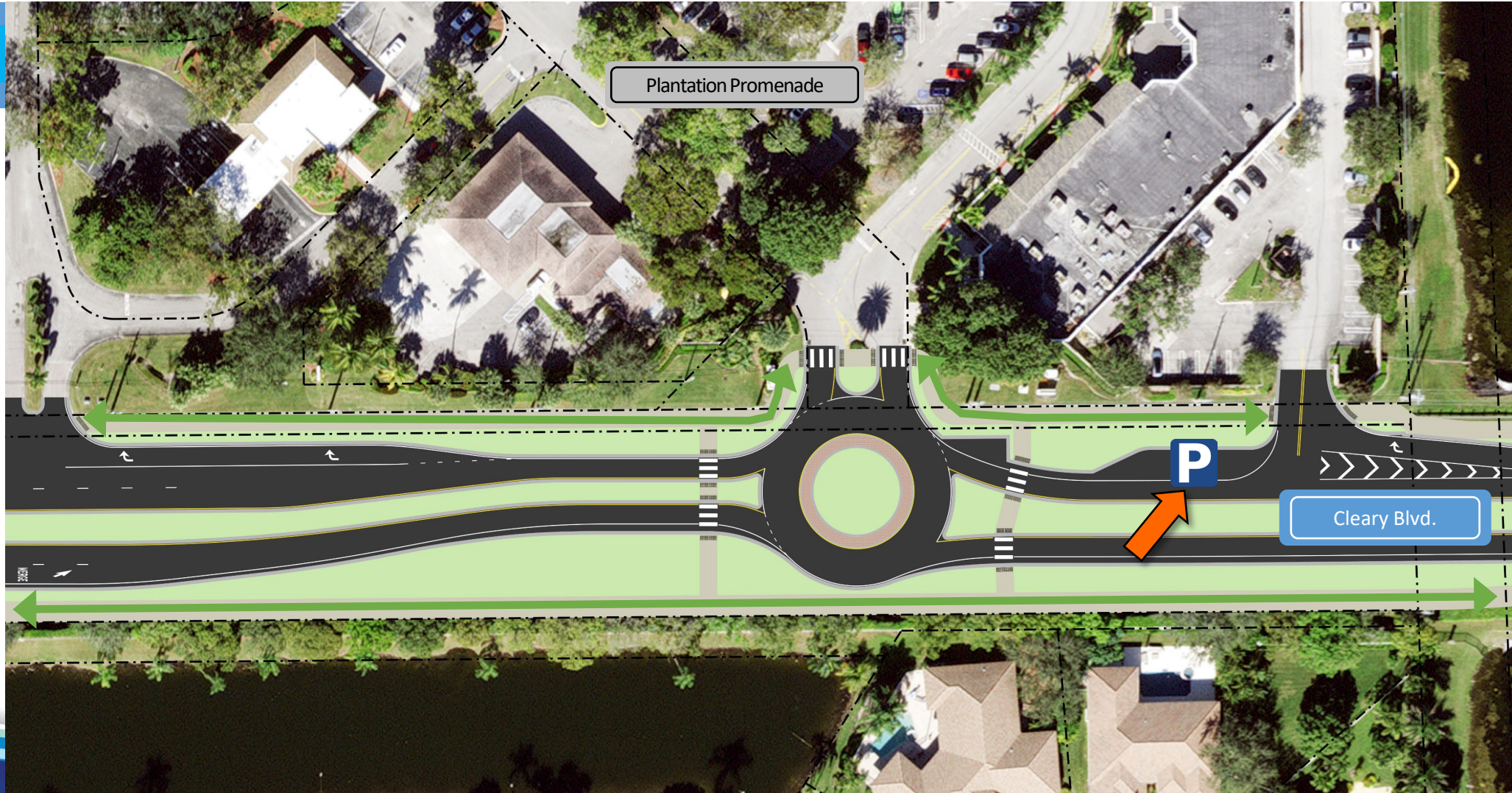
 Shared-Use Path

 Property Lines

 Sidewalk/Pedestrian Space

 Maintenance Pullout/Parking

- Single lane roundabout does not require relocation of powerlines and storm drains
- Preliminary layout of multi-lane roundabout requires additional ROW
 - Relocation of power lines abutting northern edge of northern sidewalk
 - Relocation of storm drains



North

Cleary Blvd - Existing

South

Lane Reduction @ Central Park

1. Existing Sidewalks widened to 10 ft
2. One drive-lane repurposed
3. Restripe remaining lane to 11-ft wide with 4ft shoulder
4. Add 6 ft wide, *protected* bike lane
5. Roundabouts at Central Park PL and Central Park Dr at lane reduction
6. Ped-Scale lights at regular intervals
7. 8 ft Maintenance Bays provided for developments with no side-street access

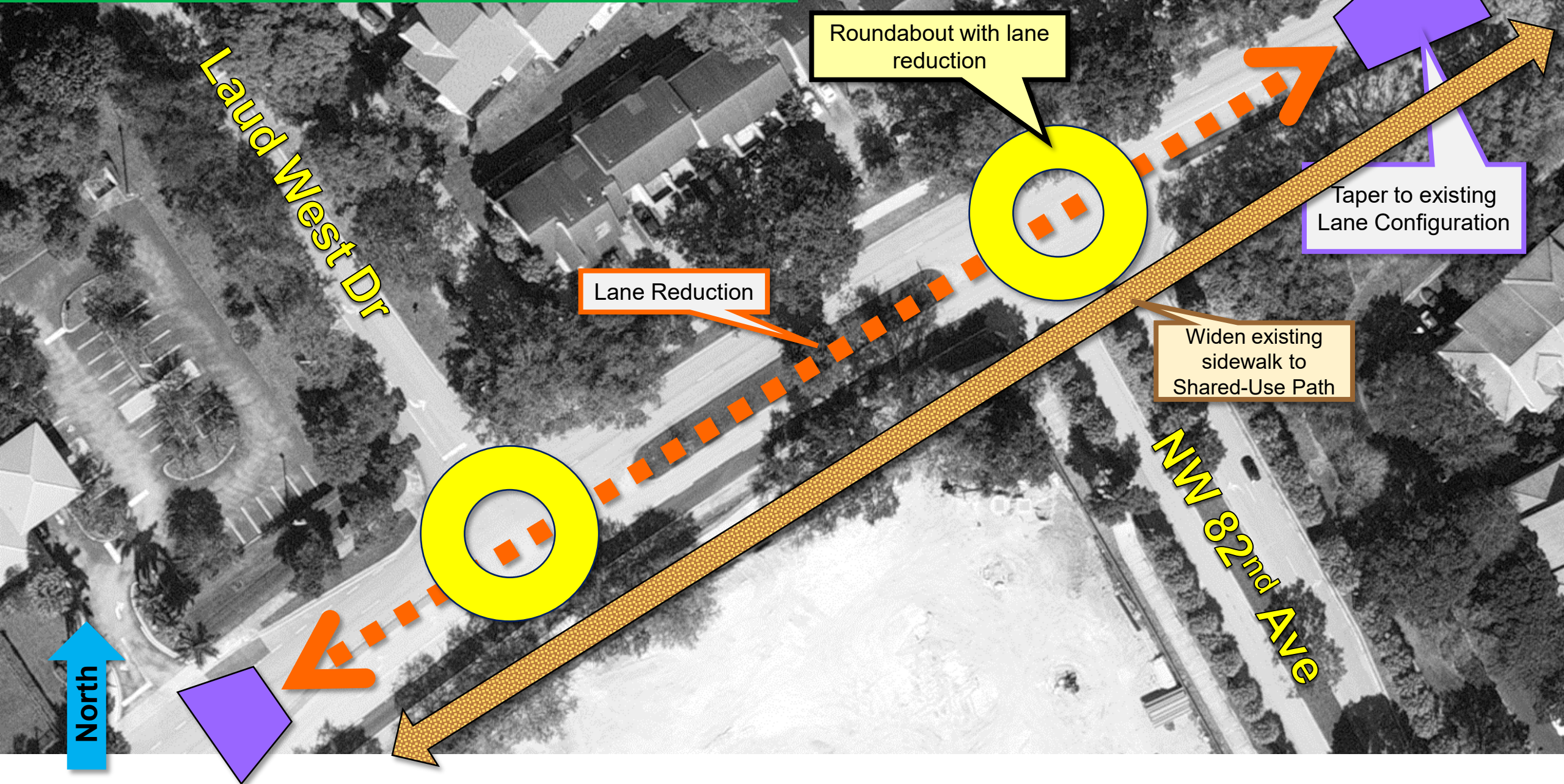


- ✓ Quick-build lane reduction
- ✓ Bike lane can be protected by temporary, low-cost, or high-cost materials
- ✓ Ped / Bike activity separated
- ✓ Curb does not need to be moved
- ✓ Bike Lanes to be accommodated at Roundabouts and Bus Bays

Cleary Blvd - Lane Reduction



Pine Island Rd to University Dr: Recommendations



Pine Island Rd to University Dr

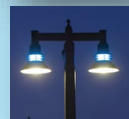
Detailed Improvements



- Reconfigurations of intersections into two roundabouts
- Widen sidewalks to 10'-12' wide shared-use path for both pedestrian/bike traffic on southern edge of Cleary Blvd.
- Enhanced Crosswalk to be equipped with Rectangular Rapid-Flashing Beacon
- Westbound Cleary Blvd. to expand back to two thru lanes west of Lauderdale W Drive

Improvements to ALL Intersections

- High visibility crosswalk markings
- Ped-Scale lighting near / at intersections
- LPI signal phasing (plus countdown)



Widen existing sidewalks to Shared Use Paths (10 to 12 ft)

Install wayfinding signage to direct ped crossings to southern crosswalk

Expand pedestrian area to improve access to and visibility of Shared Use Path within southern ROW

Improvements to ALL Intersections

- High visibility crosswalk markings
- Ped-Scale lighting near / at intersections
- LPI signal phasing (plus countdown)










Enhance existing crosswalk with high visibility pavement markings

Cleary Blvd: General Recommendations

Ultimate Buildout



-  Pedestrian Bridge
-  Intersection Improvements (High-Visibility Crosswalks, Ped-Scale Lighting, Wayfinding Signage)
-  Lane Repurposing – Preliminary
-  Lane Repurposing – Ultimate Buildout
-  Roundabouts
-  Pedestrian Connectivity to Park (Mid-block crosswalks, Raised Crosswalks, Ped-Only Park Entrances)
-  Shared-Use Path

Next Steps

City Staff Working Group Meeting: Final Recommendations	Jan 11, 2023
Cleary Blvd Roadway Safety Audit (RSA) Kick-Off	Jan
Public Engagement	Feb - Apr
Planning Concepts SOW and Cost Estimates	Feb
Submit for MTP 2050 Call For Projects	March
Final MMTP Report	April

Safety Program Goals



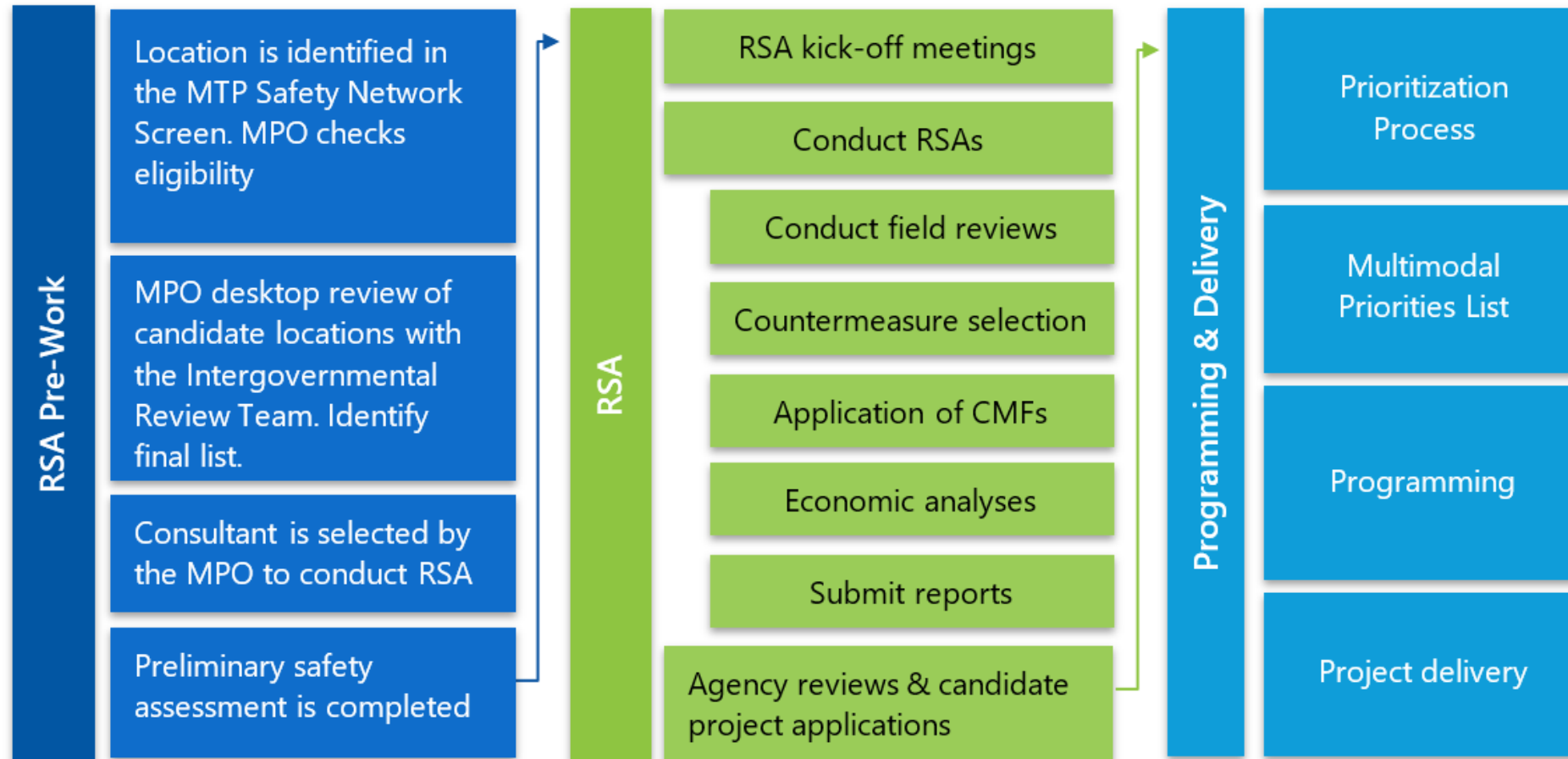
To create an innovative, expedited, and equitable off-system safety study process where Broward MPO serves as a transparent point of contact and facilitator between FDOT and local municipalities.



Getting projects into TIP that speak directly to safety.



To create a consistent safety process with 2045 Metropolitan Transportation Plan (MTP), Federal Highway Association (FHWA) and Florida Department of Transportation (FDOT).



Cleary Blvd RSA



RSA will start in January



Broward County/MPO coordination will be necessary for overlapping county roadways (Hiatus & Pine Island Rd.)



RSA recommendations will build off of Plantation Transportation Master Plan and assess safety issues in more detail



Preliminary analysis shows Pine Island intersection accounts for about 25% of all injuries on the corridor.

Discussion



Move People & Goods | Create Jobs | Strengthen Communities

MMTP Phase 2

Mid / Long-term Improvements

Meeting with Broward County

January 4, 2023