

Legend

- WPRK-001
- Municipality
- Unincorporated

Suggested Work Mix:
Primary Work Mix:
Secondary Work Mix:

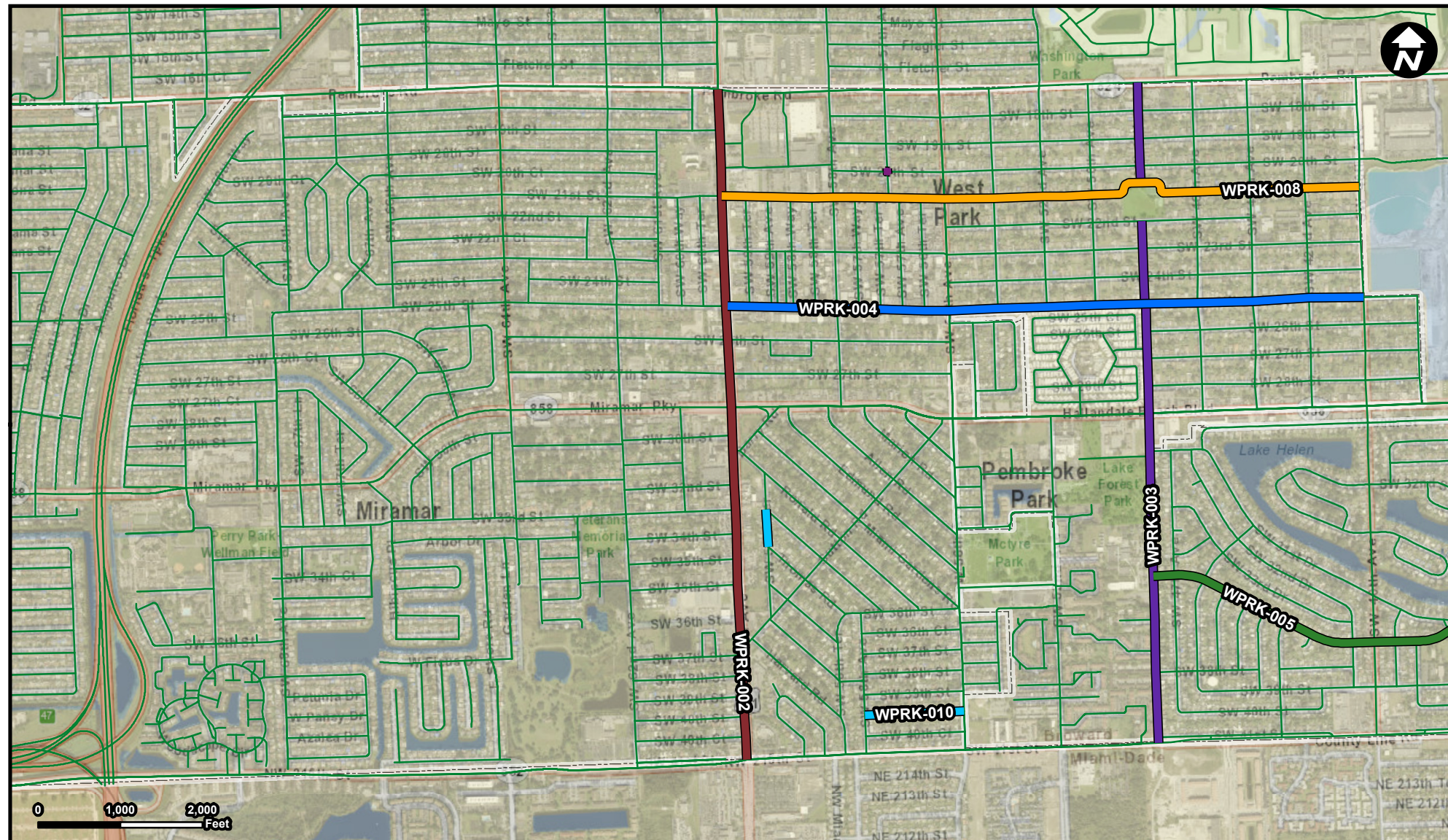
Capacity Increase, Widening
Bridge
New Road Construction

Project Description & Project Scope

This project consist of the extension of Countyline Road from SW 32nd Avenue to I-95. (Note this outside of West Park)

This project consists of the extension of County Line Road from SW 32nd Avenue to I-95. This project will provide much needed mobility and connectivity from the Florida turnpike (I-821) at SW 27th Avenue to I-95. The extension will provide development

FROM:
To:



Legend

- WPRK-002
- WPRK-003
- WPRK-004
- WPRK-005
- WPRK-007
- WPRK-008
- WPRK-010
- Municipality
- Unincorporated

Suggested Work Mix:
Primary Work Mix:
Secondary Work Mix:

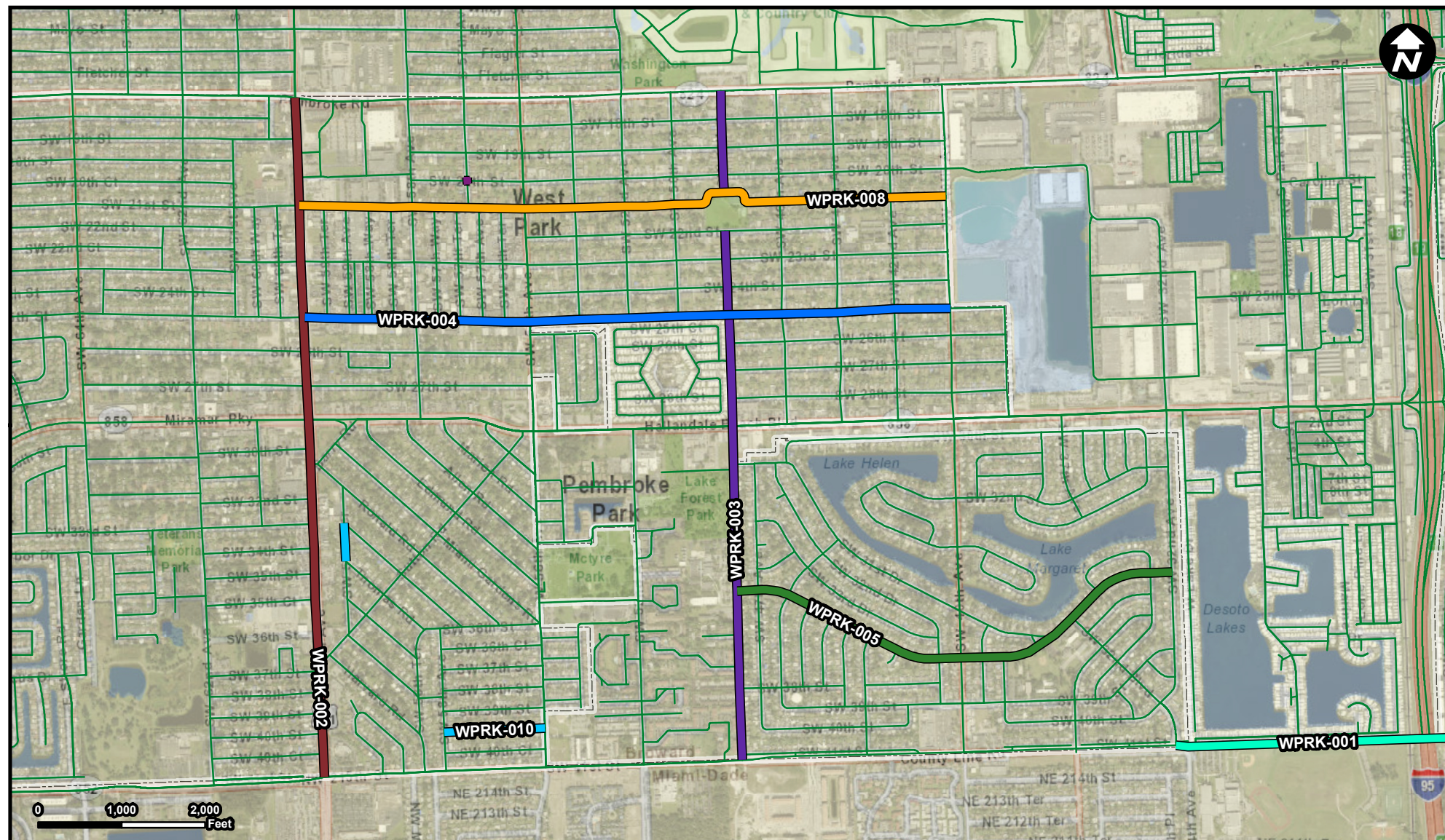
Landscaping, Hardscape, Signage
Lighting

Project Description & Project Scope

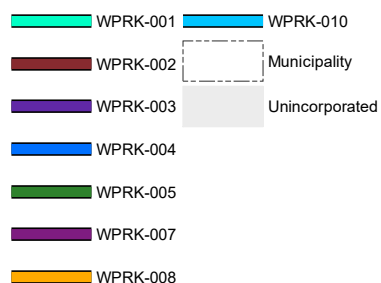
design and installation of 42 Washingtonian pedestrian streetlights along State Road 7 between County Lind Road and Pembroke Road. The current proposed roadway widening does not account for pedestrian lighting along the east side.

This Project consists of the design and installation of 42 Washingtonian pedestrian streetlights along State Road 7 between County Line Road and Pembroke Road. The current proposed roadway widening does not account for pedestrian (sidewalk) lighting along

FROM: Pembroke Road
To: Countyline Road



Legend



Suggested Work Mix:
Primary Work Mix:
Secondary Work Mix:

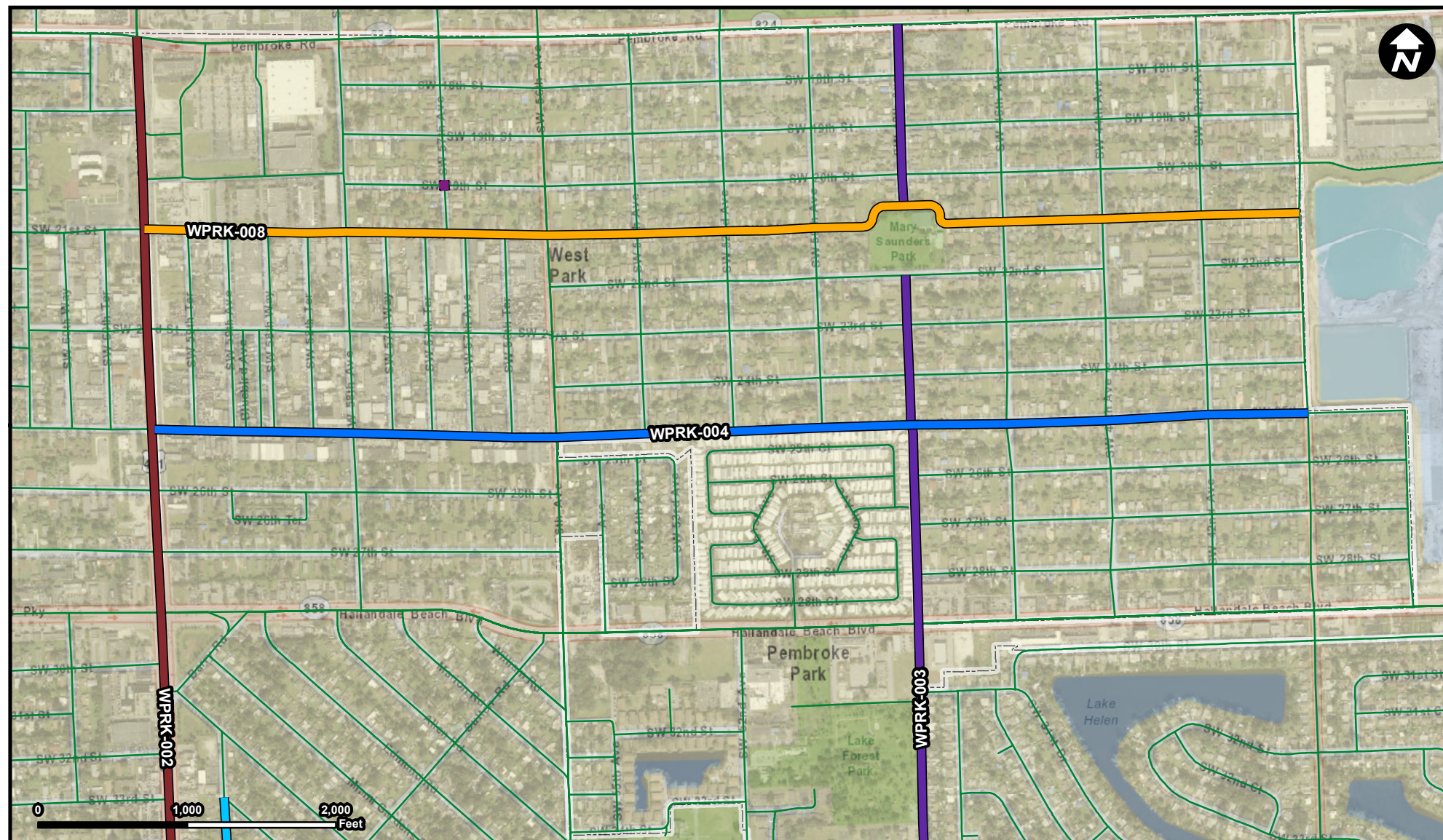
Project Description & Project Scope

Bicycle Pedestrian Infrastructure
Intersection
Signing/Pavement

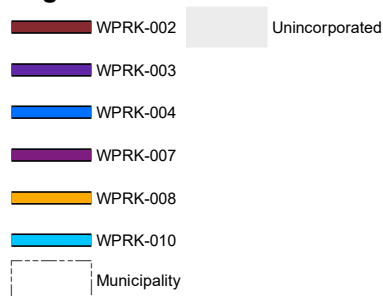
Roadway upgrade and re-alignment from Countyline Road to Pembroke Road. The 1.5 mile improvement will include bike lanes, improved sidewalks with complete connectivity, adjustment to the drainage system, roadway resurfacing, landscaping and pave

This complete street improvement project consists of the roadway upgrade and mirror realignment from County Line Road to Pembroke Road. This approximately 1.5-mile corridor improvement will include bike lanes; improved sidewalks with complete connectivit

FROM: Pembroke Road
To: Countyline Road



Legend



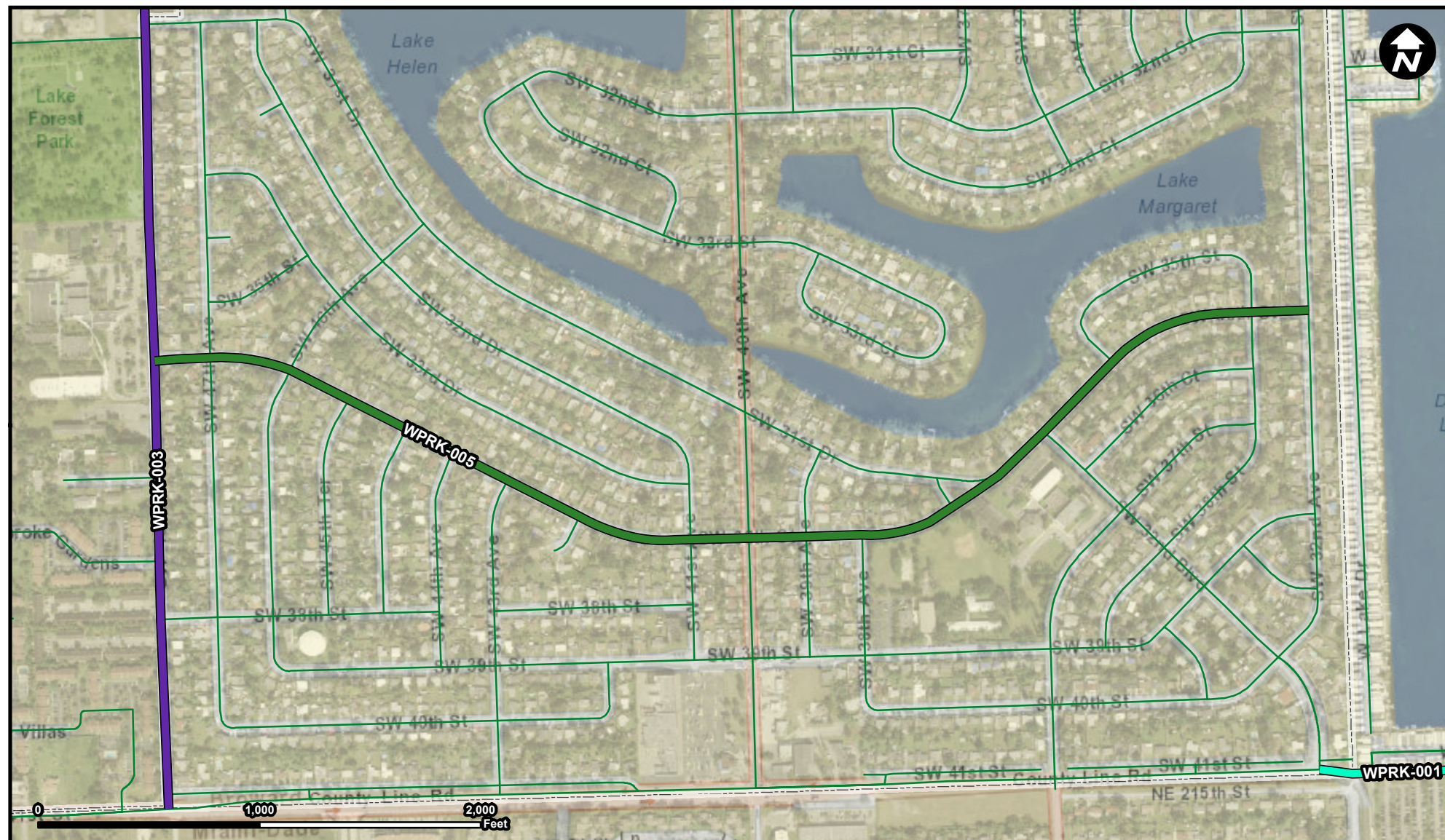
Suggested Work Mix:
Primary Work Mix:
Secondary Work Mix:

Project Description & Project Scope

Bicycle Pedestrian Infrastructure
Intersection
Signing/Pavement

Complete street improvement project from State Road 7/441 to SW 40 Avenue. Will include drainage system improvement, traffic calming devices, roadway resurfacing, installation of sidewalk, bike lanes, and installation of traffic calming devices.

As part of the Neighborhood Traffic Calming Study Area "B", this is a complete street improvement project that includes drainage system improvement; traffic calming devices; roadway resurfacing; installation of sidewalk; bike lanes; also installation of



Legend

- WPRK-001
- WPRK-003
- WPRK-005
- Municipality
- Unincorporated

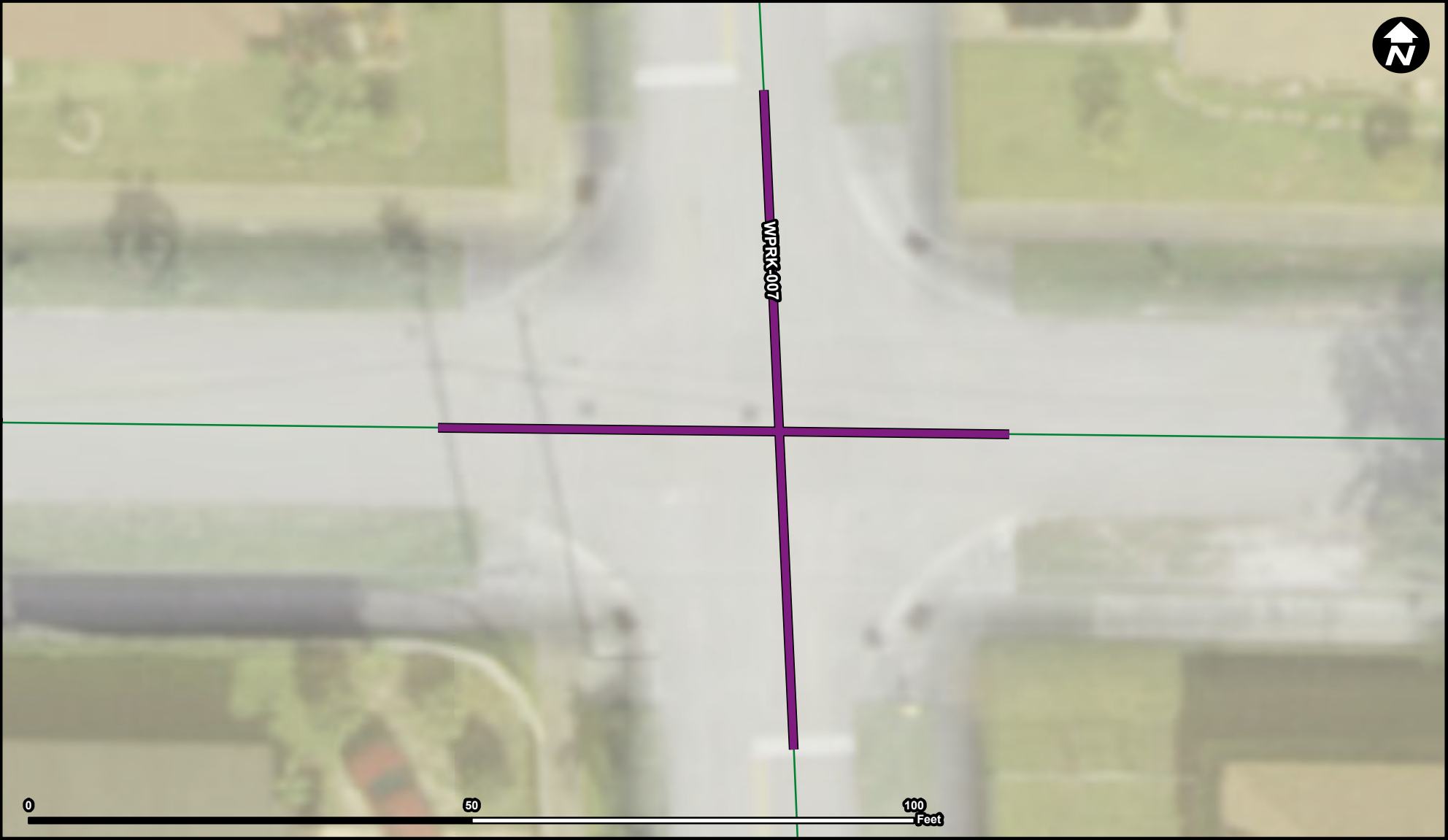
Suggested Work Mix:
Primary Work Mix:
Secondary Work Mix:

Project Description & Project Scope

Traffic Circles, Speed Tables, Intersection Improvements
Intersection
Signing/Pavement

Installing traffic calming devices along the corridor to alleviating speeding concerns. The traffic calming devices that will be considered will include, speed tables, speed humps and circles, as part of SW 40th Avenue improvements and other devices.

As part of the Neighborhood Traffic Calming Study Area "C", this project involves installing traffic-calming devices along the subject corridor to alleviate speeding concerns. The traffic calming devices that will be considered include, speed tables, spe



Legend

- WPRK-007
- Municipality
- Unincorporated

Suggested Work Mix:
Primary Work Mix:
Secondary Work Mix:

Project Description & Project Scope

FROM: intersection
To: intersection

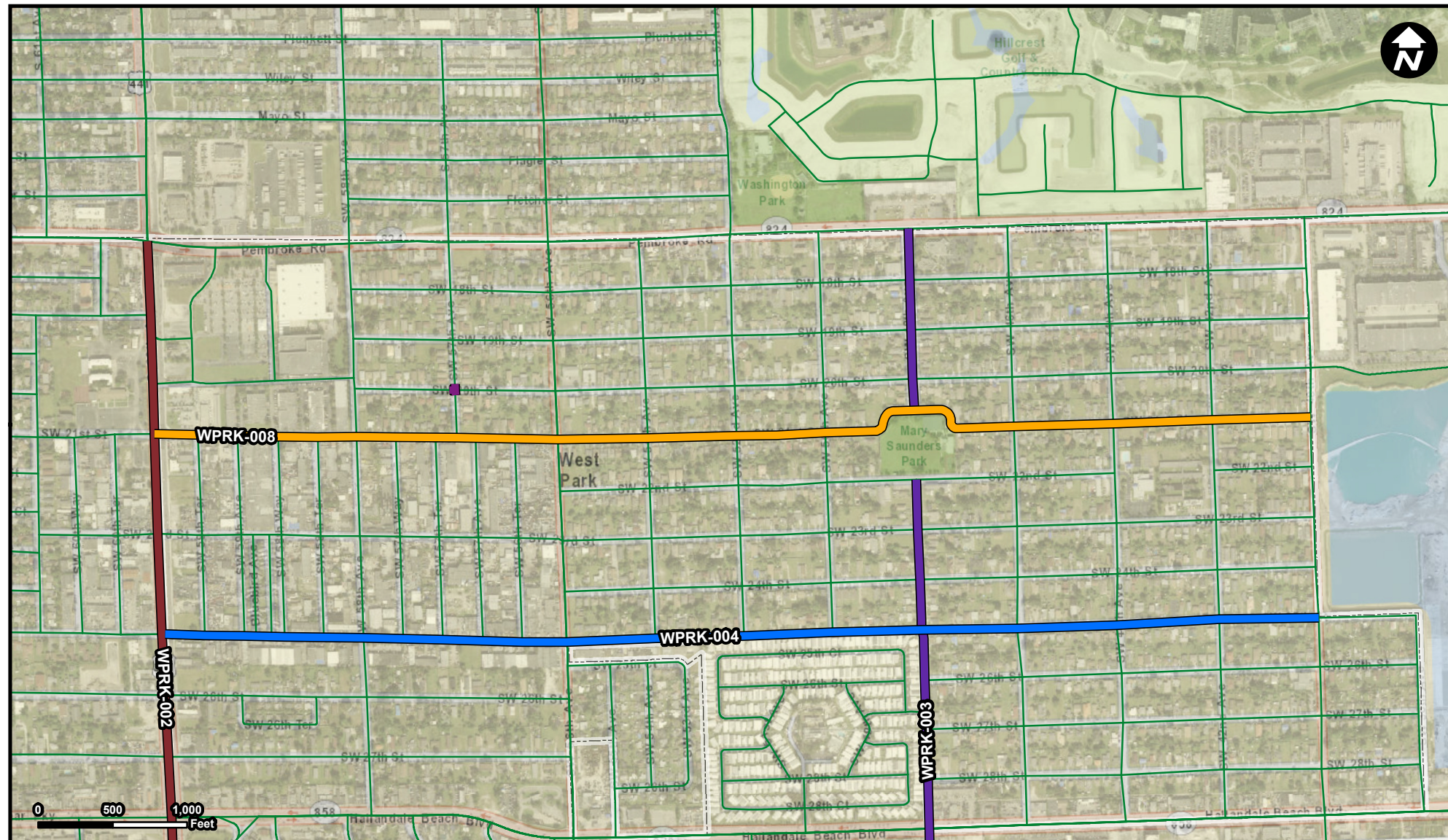
Traffic Circles, Speed Tables, Intersection Improvements

Intersection

Signing/Pavement

Installation of a traffic circle to calm traffic at the intersection of SW 57th Ave SW 20th St, as well as landscaping in the traffic circle, installation of brink pavers around the circle, and regrading of the intersection to prevent flooding.

This project consists of the installation of a traffic circle that is designated to calm traffic at the intersection of SW 57th Avenue SW 20th Street. The improvement will also include landscaping in the traffic circle; installation of brick pavers aroun



Legend

- WPRK-002
- WPRK-003
- WPRK-004
- WPRK-007
- WPRK-008
- Municipality
- Unincorporated

Suggested Work Mix:
Primary Work Mix:
Secondary Work Mix:

Project Description & Project Scope

Traffic Circles, Speed Tables, Intersection Improvements
Intersection
Signing/Pavement

Complete street improvement projects that will include the installation of traffic calming devices from State Road 7 to SW 40th Avenue. The improvement will also include drainage systems upgrade, bikelanes, sidewalk repairs, resurfacing and pavement mark

In an attempt to implement the Neighborhood Traffic Calming Study Area "B" recommendations, this is a complete street improvement project that will include the installation of traffic calming devices from State Road 7 to SW 40th Avenue. The improvement w

FROM: State Road 7
To: SW 40th Avenue



Legend

- WPRK-002
- WPRK-010
- Municipality
- Unincorporated

Suggested Work Mix:
Primary Work Mix:
Secondary Work Mix:

Project Description & Project Scope

Traffic Circles, Speed Tables, Intersection Improvements
Intersection
Signing/Pavement

Implementation of traffic calming devices in the Miami Gardens section of the City. Speed tables on SW 59 Terrace, between Thomas Road and Virginia Road and another one on SW 40 Court, between SW 56 Avenue and SW 58 Avenue.

Implementation of traffic calming devices in the Miami Gardens section of the City. As part of our Traffic Calming Study Area "A", staff is recommending speed tables on SW 59 Terrace, between Thomas Road and Virginia Road as recommended in Phase "2" of t