

## Legend

- WILT-003
- WILT-006
- WILT-007
- WILT-008
- WILT-012
- Municipality
- Unincorporated

**Suggested Work Mix:**  
**Primary Work Mix:**  
**Secondary Work Mix:**

**Project Description & Project Scope**

**Bicycle Pedestrian Infrastructure**  
**Sidewalk**  
**Safety Project**

Traffic calming, bike & pedestrian lanes

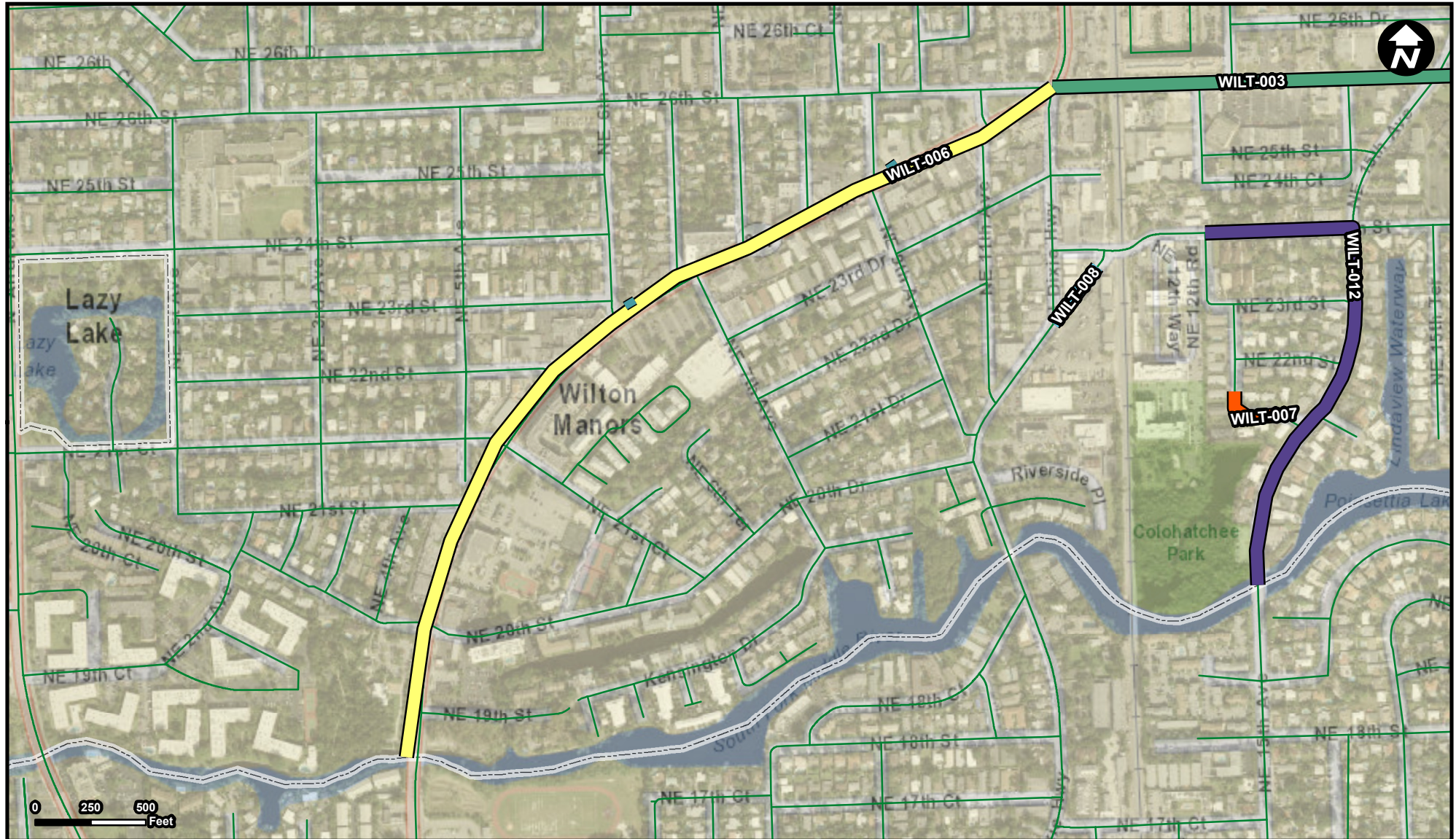
This project will consist of the widening of existing sidewalks on both sides of NE 26th Street between Dixie Highway and the city limits at the Middle River bridge. The existing travel lanes will be narrowed by one foot and the existing shoulders will

**FROM:** Dixie Highway  
**To:** City Limits at Eastern Middle River, just west of US 1.



# WILT-006

**Project Name**  
Roadway median landscape improvements



### Legend

- 
- WILT-003  
WILT-006  
WILT-007  
WILT-008  
WILT-009  
WILT-012  
Unincorporated  
Municipality

**FROM:** Middle River (South)...City Limit  
**To:** NE 26th Street

**Suggested Work Mix:**

**Primary Work Mix:**  
**Secondary Work Mix:**

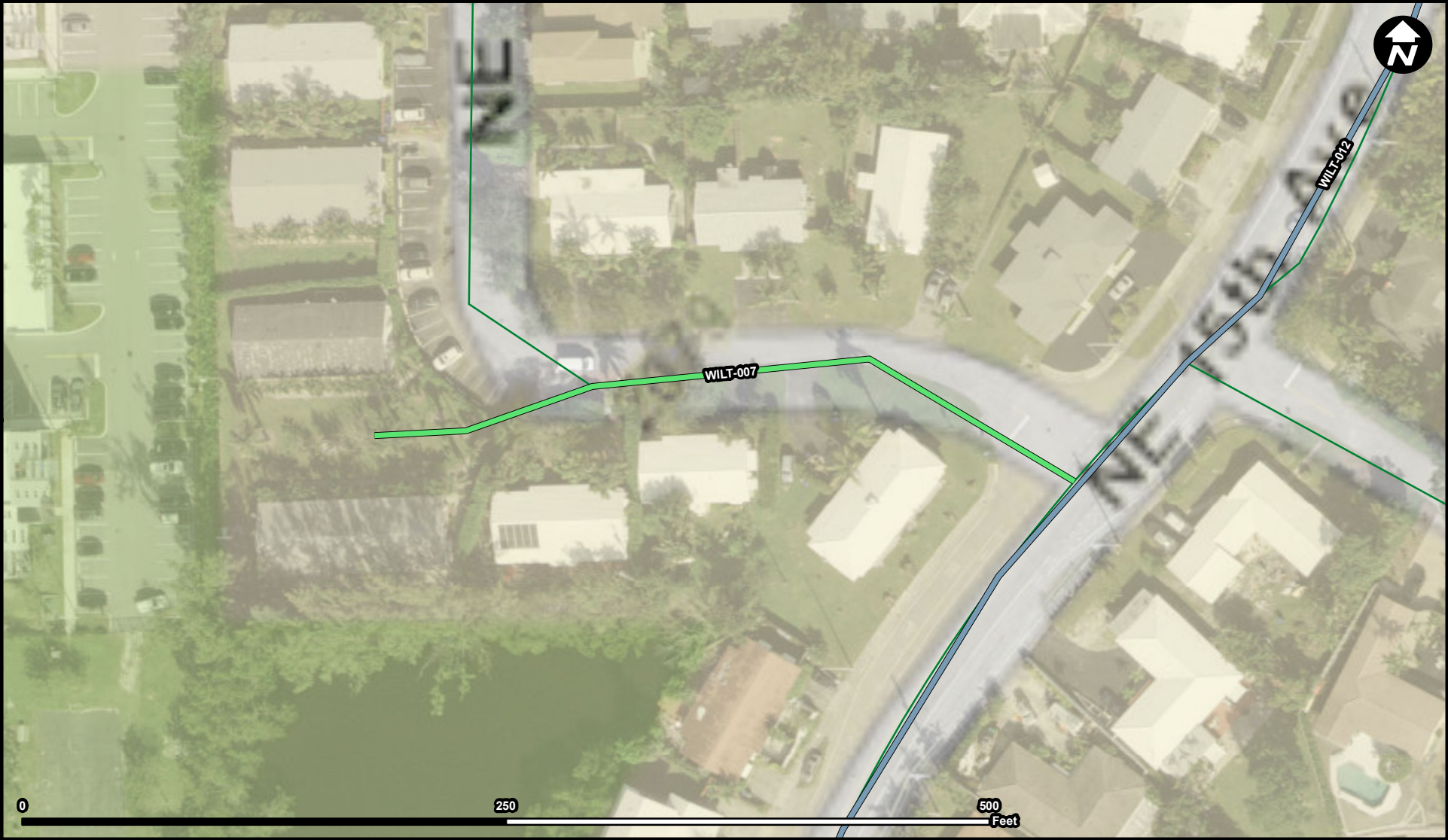
## Project Description & Project Scope

## Bicycle Pedestrian Infrastructure

**Landscaping**  
**Signing/Pavement**  
Walkability, ADA access

This project is following the completion of the FDOT complete streets reconstruction of Wilton Drive. The City intends to install irrigation, landscaping, and wayfinding signage within the existing right-of-way. Work will occur in medians, roadway bump





**Legend**

- WILT-007
- WILT-012
- Municipality
- Unincorporated

**Suggested Work Mix:** Bicycle Pedestrian Infrastructure

**Primary Work Mix:** Parking Facility

**Secondary Work Mix:**

**Project Description & Project Scope**

FROM: To:

Lots and Structures

The project consists of the construction of a 32 lot parking facility on a 0.52 acre parcel, providing connectivity to both Colohatchee Park and NE 15th Street. The lot will include a trailhead connecting to existing trails in the park. NE 15th Avenue





**Legend**

WILT-003

Unincorporated

WILT-006

WILT-008

WILT-009

WILT-012

Municipality

**Suggested Work Mix:** Bicycle Pedestrian Infrastructure

**Primary Work Mix:** Parking Facility

**Secondary Work Mix:** Transit Improvement

**Project Description & Project Scope**

Improvement of pedestrian, bicyclist and ADA access to transit

This project consists of creating a public parking facility at 2100 N Dixie Highway, where the existing public works yard is located. An area to the north of the property will be reconfigured for parking and improved access to Old Dixie Highway.

**FROM:**

**To:**





Construction, maintenance, repairs and accessibility

**FROM:**  
**To:**





## Legend

- WILT-007
- WILT-008
- WILT-012
- Municipality
- Unincorporated

**Suggested Work Mix:**  
**Primary Work Mix:**  
**Secondary Work Mix:**

**Project Description & Project Scope**

**Bicycle Pedestrian Infrastructure Intersection Safety Project**

Crosswalks, bike lane buffer, traffic calming




Raised intersections are proposed along NE 15th Ave at the intersection of NE 15th Ave and NE 24th St, NE 22nd St, and NE 21st St. Another is proposed between Colohatchee Park and the Boat Ramp. This project also consists of the installation of 5 foot w

**FROM:** NE 26th Street  
**To:** Middle River/Southern Border





Legend

-  WILT-015
-  Municipality
-  Unincorporated

**Suggested Work Mix:** Landscaping, Hardscape, Signage  
**Primary Work Mix:**  
**Secondary Work Mix:**

**Project Description &  
Project Scope**

Gateway Design for Oakland Park Blvd & Andrews Avenue

FROM:  
To: