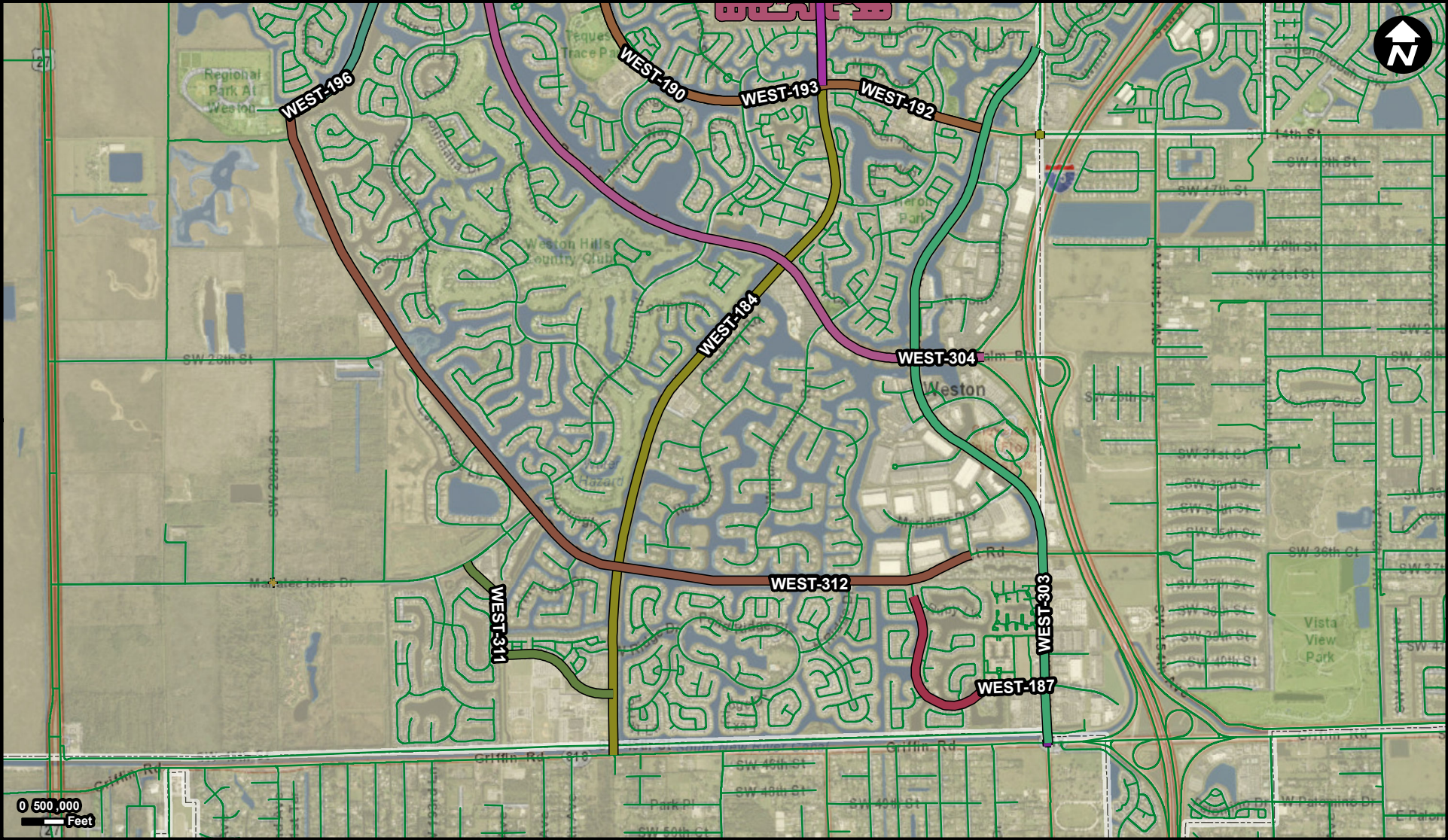


WEST-184



**Legend**

WEST-184	WEST-195	WEST-300	WEST-312
WEST-187	WEST-196	WEST-302	Municipality
WEST-190	WEST-222	WEST-303	Unincorporated
WEST-192	WEST-224	WEST-304	
WEST-193	WEST-289	WEST-306	
WEST-194	WEST-290	WEST-311	

**Suggested Work Mix:** Bicycle Pedestrian Infrastructure

**Primary Work Mix:**

**Secondary Work Mix:**

**Project Description & Project Scope**

**FROM:** Bonaventure Blvd at Griffin Road

**To:** Bonaventure Blvd Indian Trace

Design and roadway repaving to improve transportation, roads and signalization

Construction of Improvements for ADA accessible ramps, sidewalks and re-construction of asphaltic roadway surface for bike lanes and vehicular traffic with associated pavement markings and signage.





**Legend**

- WEST-187
- WEST-303
- Municipality
- Unincorporated

**Suggested Work Mix:** Bicycle Pedestrian Infrastructure  
**Primary Work Mix:** Signing/Pavement  
**Secondary Work Mix:**

**Project Description & Project Scope**

Design and roadway repaving to improve transportation, roads and signalization

Design of Improvements for ADA accessible ramps, sidewalks and re-construction of asphaltic roadway surface for bike lanes and vehicular traffic with associated pavement markings and signage.

**FROM:** Weston Rd at Emerald Estates Drive  
**To:** Emerald Estate Drive Gate House





**Legend**

WEST-188	WEST-196	Unincorporated
WEST-190	WEST-290	
WEST-191	WEST-304	
WEST-192	WEST-305	
WEST-193	WEST-308	
WEST-195	Municipality	

**Suggested Work Mix:** Bicycle Pedestrian Infrastructure  
**Primary Work Mix:**  
**Secondary Work Mix:**

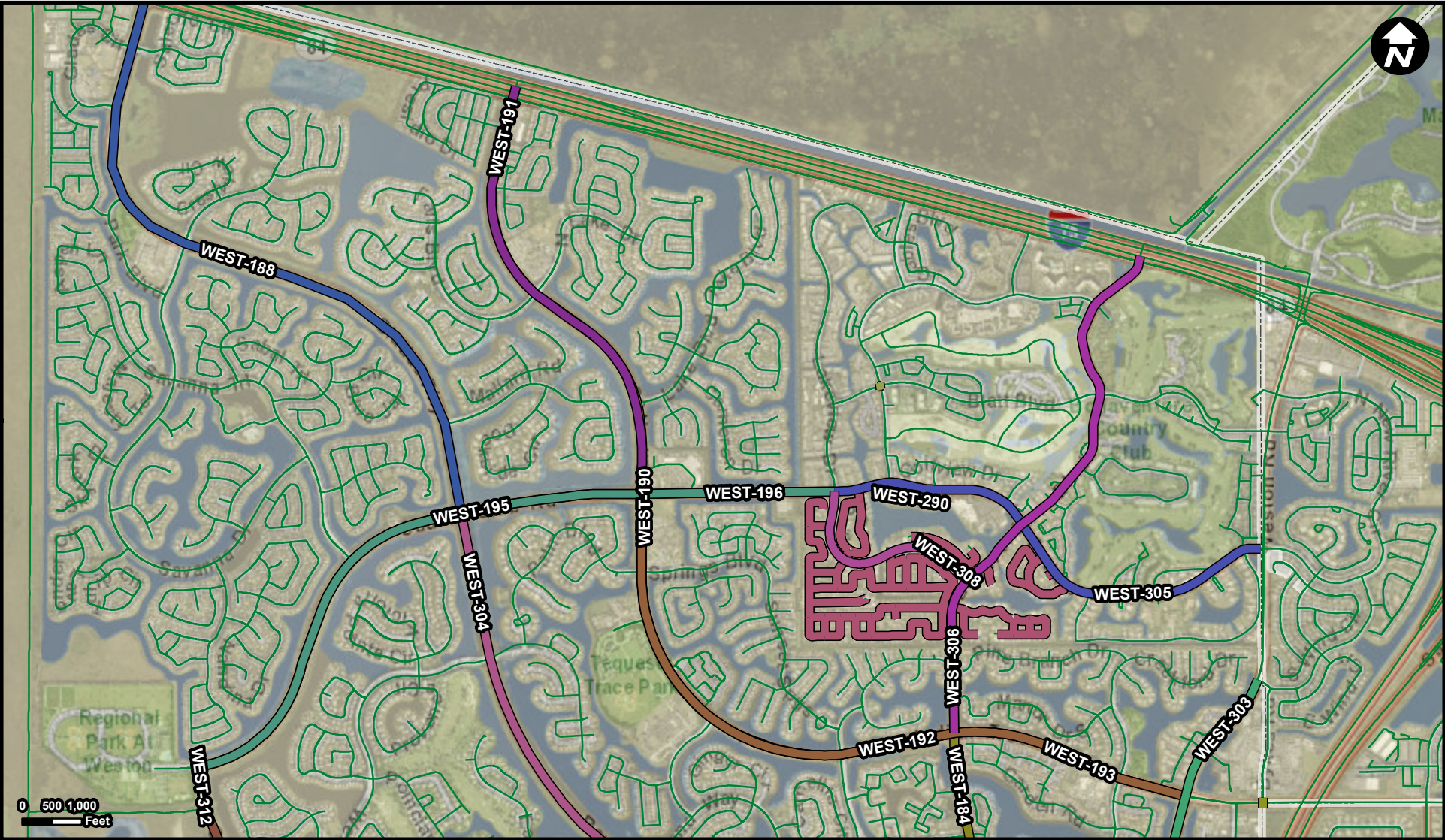
**Project Description & Project Scope** Design and roadway repaving to improve transportation, roads and signalization

**FROM:**  
**To:**



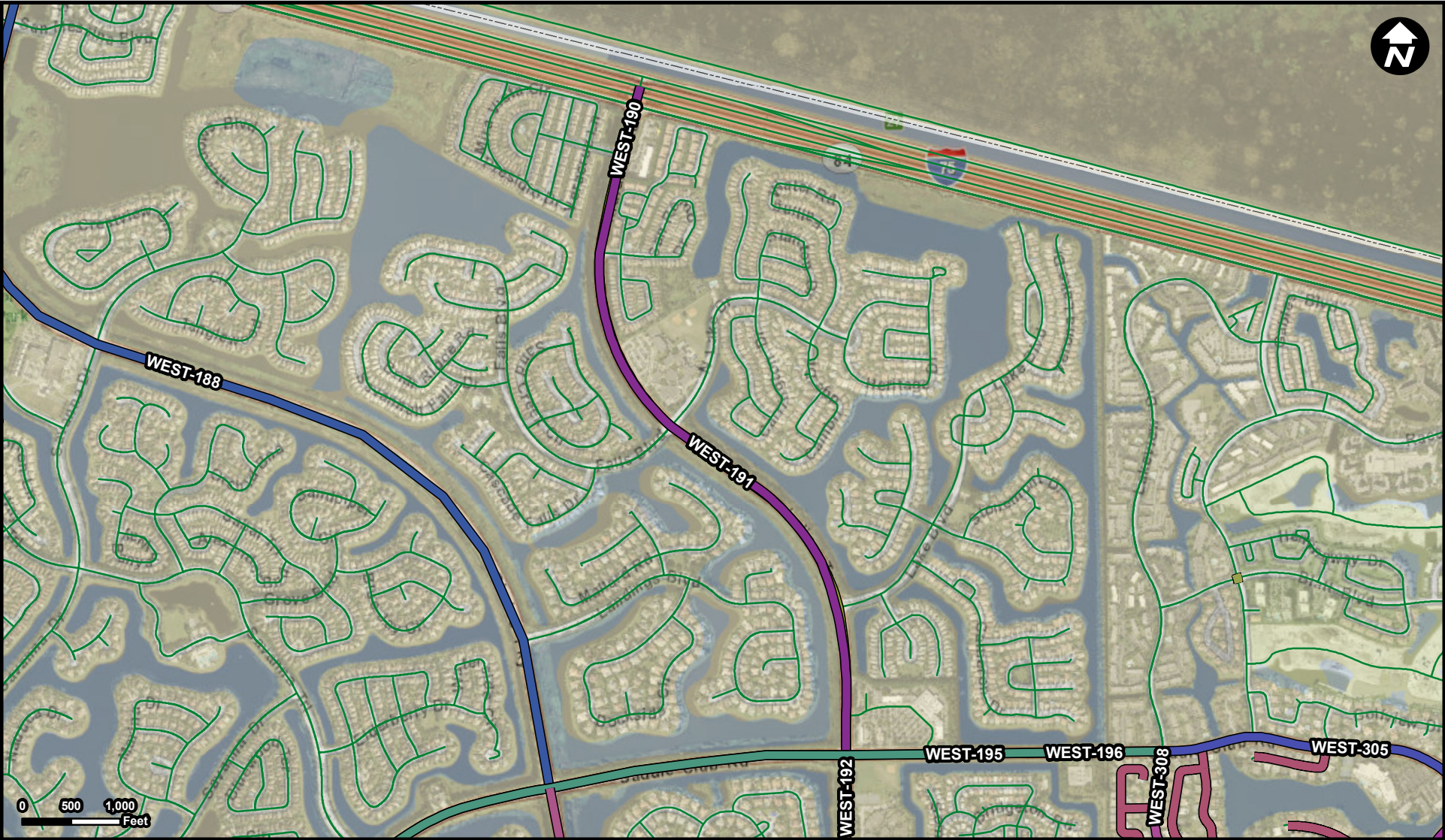
WEST-190

Project Name  
Indian Trace Road Roadway Improvements



<b>Legend</b> <div> <div>WEST-184</div> <div>WEST-195</div> <div>WEST-303</div> <div>Municipality</div> </div> <div> <div>WEST-188</div> <div>WEST-196</div> <div>WEST-304</div> <div>Unincorporated</div> </div> <div> <div>WEST-190</div> <div>WEST-289</div> <div>WEST-305</div> </div> <div> <div>WEST-191</div> <div>WEST-290</div> <div>WEST-306</div> </div> <div> <div>WEST-192</div> <div>WEST-301</div> <div>WEST-308</div> </div> <div> <div>WEST-193</div> <div>WEST-302</div> <div>WEST-312</div> </div>			<b>Suggested Work Mix:</b> <b>Primary Work Mix:</b> Bicycle Pedestrian Infrastructure <b>Secondary Work Mix:</b> Signing/Pavement <b>Project Description &amp; Project Scope:</b> Design and roadway repaving to improve transportation, roads and signalization Design and Survey Only - For	<b>FROM:</b> On Indian Trace at SR 84E <b>To:</b> On Indian Trace at Bonaventure Blvd
--	--	--	---	--





**Legend**

WEST-188	WEST-196	WEST-308
WEST-190	WEST-290	Municipality
WEST-191	WEST-301	Unincorporated
WEST-192	WEST-304	
WEST-193	WEST-305	
WEST-195	WEST-306	

**Suggested Work Mix:**

**Primary Work Mix:** Add Lanes

**Secondary Work Mix:** Signing/Pavement

**Project Description & Project Scope**

Design and roadway repaving to improve transportation, roads and signalization

Construction of Improvements for ADA accessible ramps, sidewalks and re-construction of asphaltic roadway surface for bike lanes and vehicular traffic with associated pavement markings and signage.

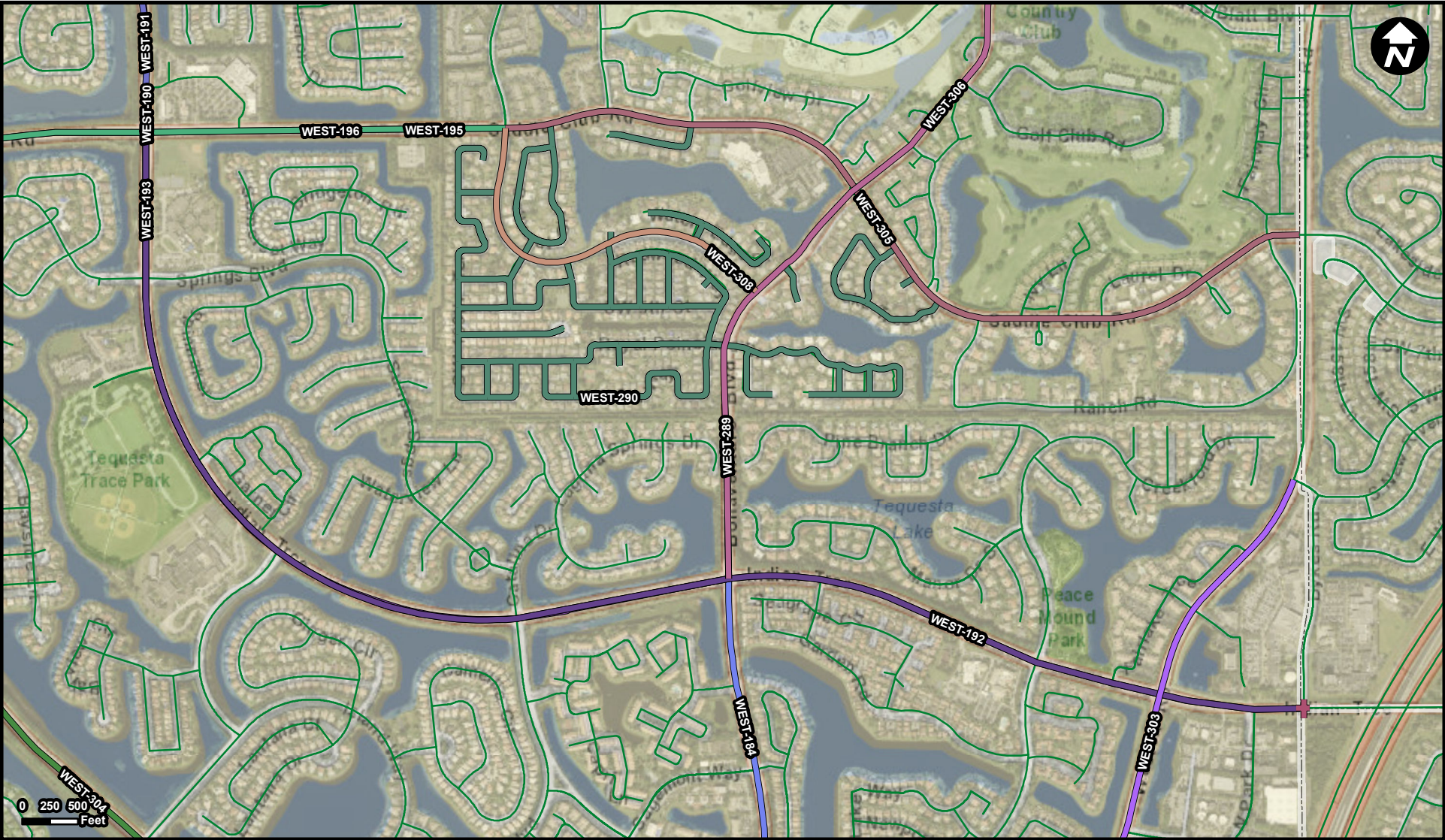
**FROM:** From Indian Trace Saddle Club Road

**To:** Indian Trace at SR84



# WEST-192

**Project Name**  
Indian Trace Road Roadway Improvements



**Legend**

WEST-184	WEST-196	WEST-305
WEST-190	WEST-289	WEST-306
WEST-191	WEST-290	WEST-308
WEST-192	WEST-302	Municipality
WEST-193	WEST-303	Unincorporated
WEST-195	WEST-304	

**Suggested Work Mix:** Bicycle Pedestrian Infrastructure  
**Primary Work Mix:** Bike Lane Sidewalk  
**Secondary Work Mix:**

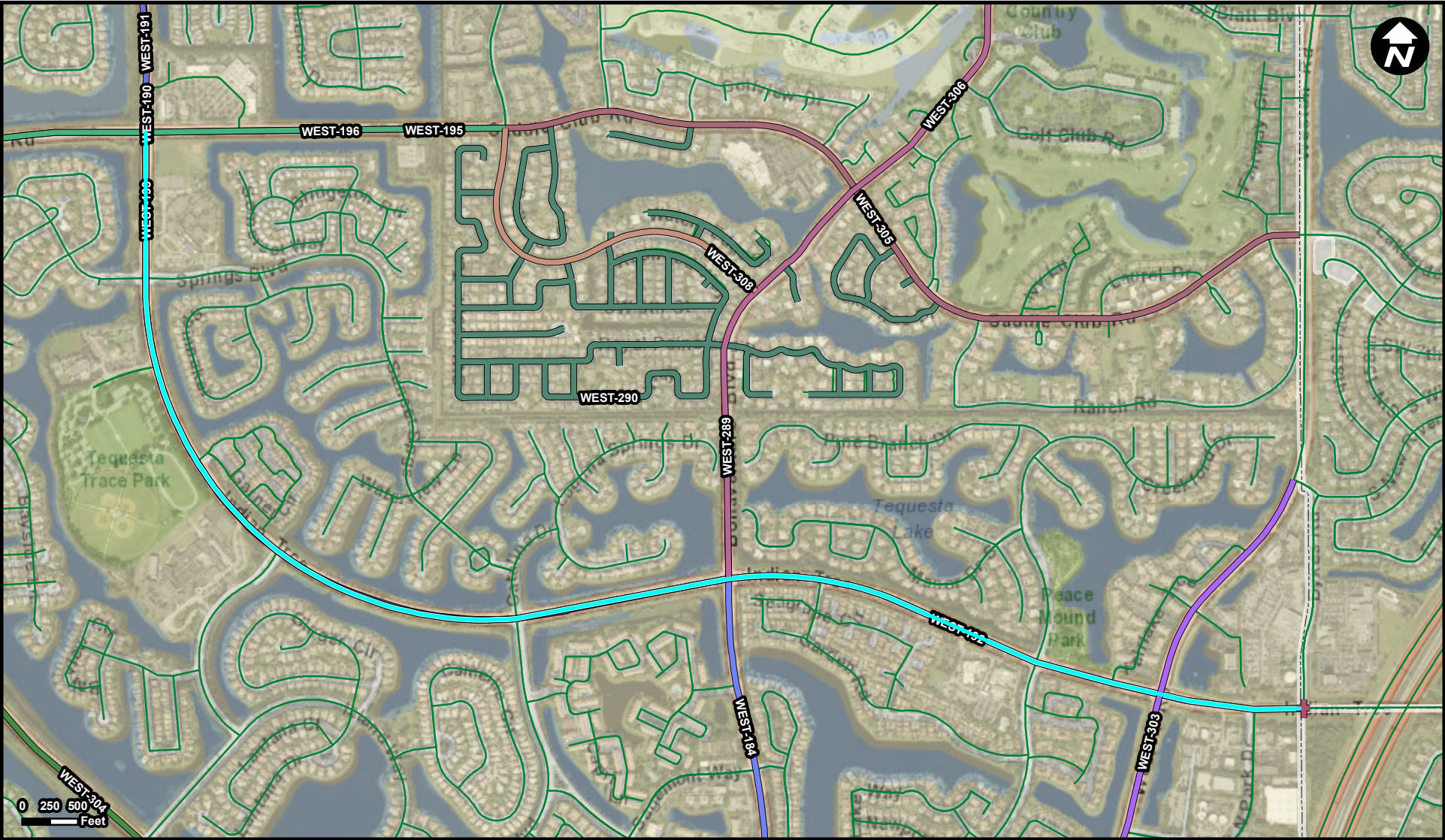
**Project Description & Project Scope** Design and roadway repaving to improve transportation, roads and signalization  
Design of Improvements for ADA accessible ramps, sidewalks and re-construction of asphaltic roadway surface for bike lanes and vehicular traffic with associated pavement markings and signage.

**FROM:** Indian Trace at SW 160 Ave  
**To:** Indian Trace at Saddle Culb



WEST-193

Project Name  
Indian Trace Road Roadway Improvements



**Legend**

WEST-184	WEST-196	WEST-305
WEST-190	WEST-289	WEST-306
WEST-191	WEST-290	WEST-308
WEST-192	WEST-302	Municipality
WEST-193	WEST-303	Unincorporated
WEST-195	WEST-304	

**Suggested Work Mix:** Bicycle Pedestrian Infrastructure  
**Primary Work Mix:** Bike Lane Sidewalk  
**Secondary Work Mix:**

**Project Description & Project Scope** Design and roadway repaving to improve transportation, roads and signalization  
Construction of Improvements for ADA accessible ramps, sidewalks and re-construction of asphaltic roadway surface for bike lanes and vehicular traffic with associated pavement markings and signage.

**FROM:** Indian Trace at SW 160 Avenue  
**To:** Indian Trace at Saddle Club Road





**Legend**

- WEST-194
- Municipality
- Unincorporated

**Suggested Work Mix:** Traffic Circles, Speed Tables, Intersection Improvements

**Primary Work Mix:** Add Lanes

**Secondary Work Mix:** Safety Project

**Project Description & Project Scope**

Creation of a Cul-de-sac in conjunction with the C-11 Impoundment Project including roadway and street light construction

Construction of Cul-de-sac on Manatee Isles Drive (aka SW 36 St) at 202 Avenue for turn-around for emergency and first responder fire rescue vehicles and apparatus due to close of SW 36 St for C-11 Impoundment Project

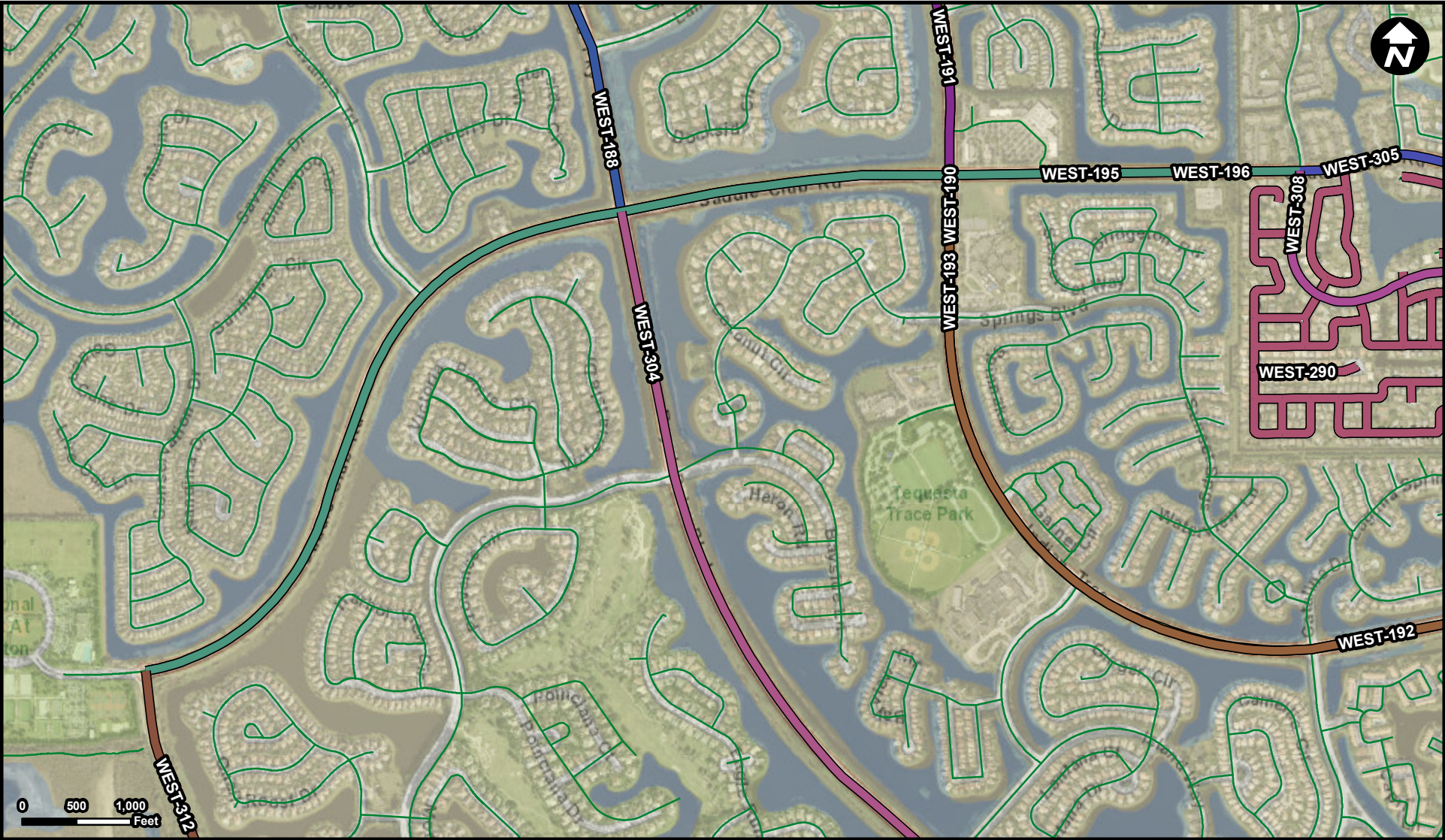
**FROM:**

**To:**



# WEST-195

**Project Name**  
Saddle Club Road Roadway Improvements



**Legend**

WEST-188	WEST-196	Municipality
WEST-190	WEST-290	Unincorporated
WEST-191	WEST-304	
WEST-192	WEST-305	
WEST-193	WEST-308	
WEST-195	WEST-312	

**Suggested Work Mix:**

**Primary Work Mix:** Bicycle Pedestrian Infrastructure

**Secondary Work Mix:** Bike Lane Sidewalk  
Signing/Pavement

**Project Description & Project Scope**

Design and roadway repaving to improve transportation, roads and signalization

Construction of Improvements for ADA accessible ramps, sidewalks and re-construction of asphaltic roadway surface for bike lanes and vehicular traffic with associated pavement markings and signage.

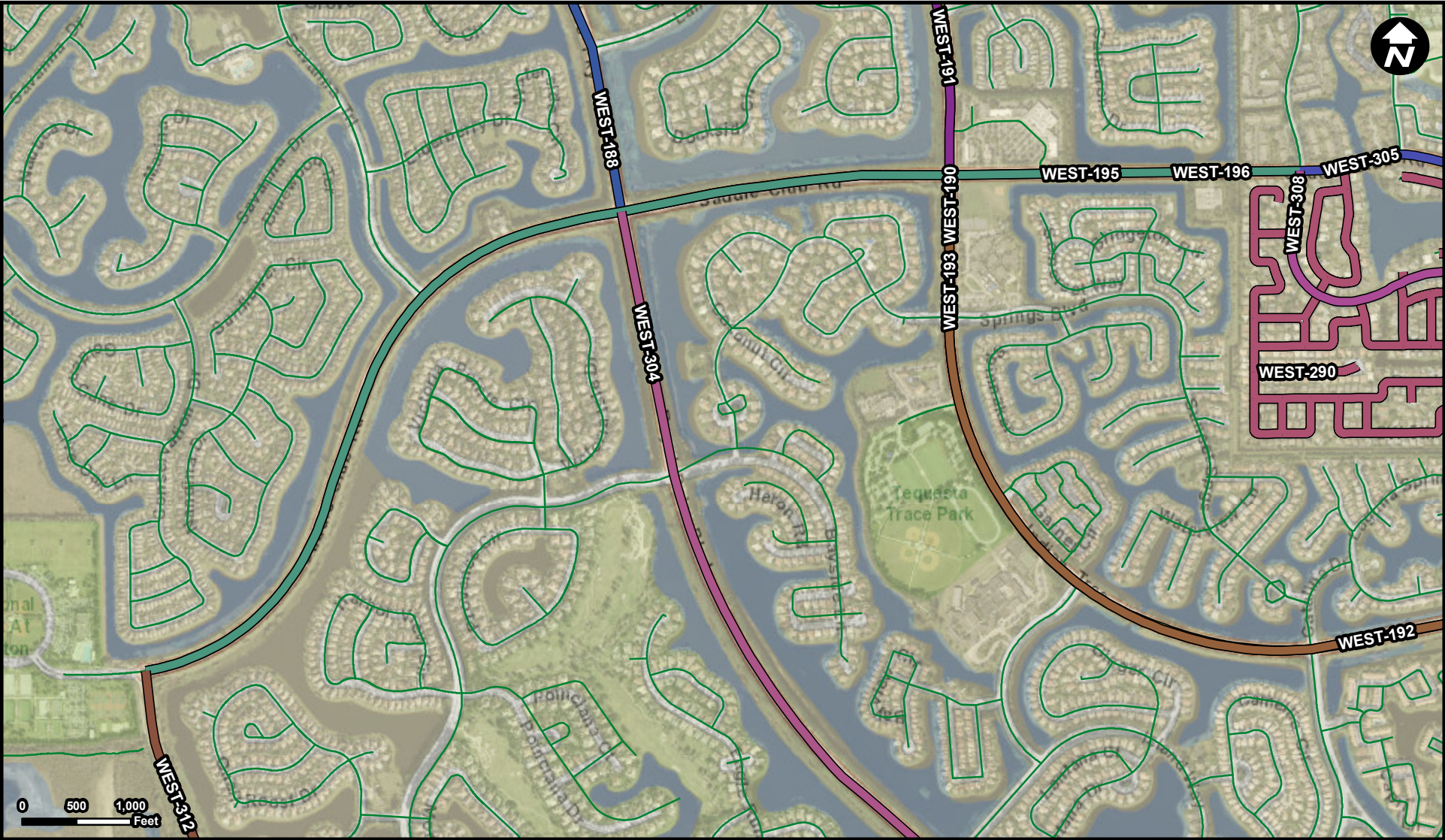
**FROM:** Saddle Club at South Post Road

**To:** Saddle Club at Lakeview Drive



WEST-196

Project Name  
Saddle Club Road Roadway Improvements



**Legend**

WEST-188	WEST-196	Municipality
WEST-190	WEST-290	Unincorporated
WEST-191	WEST-304	
WEST-192	WEST-305	
WEST-193	WEST-308	
WEST-195	WEST-312	

**Suggested Work Mix:** Bicycle Pedestrian Infrastructure

**Primary Work Mix:**

**Secondary Work Mix:**

**Project Description & Project Scope**

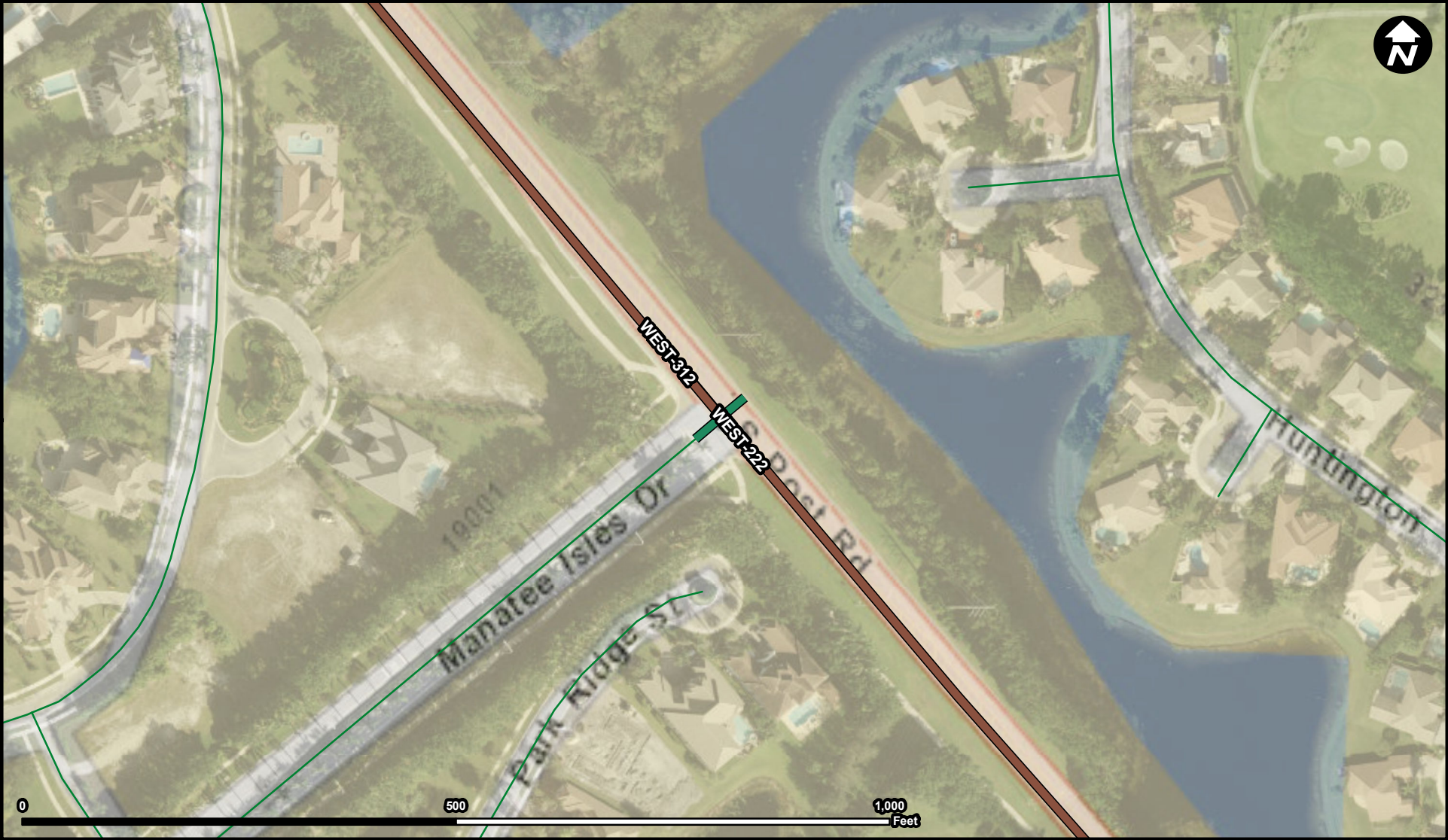
**FROM:** Saddle Club Road at South Post Road

**To:** Saddle Club at Lakeview Drive

Design and roadway repaving to improve transportation, roads and signalization

Construction of Improvements for ADA accessible ramps, and re-construction of asphaltic roadway surface for bike lanes and vehicular traffic with associated pavement markings and signage.





**Legend**

- WEST-222
- WEST-312
- Municipality
- Unincorporated

**Suggested Work Mix:**

**Primary Work Mix:** Signal Enhancement

**Secondary Work Mix:** Traffic Signals

**Project Description & Project Scope**

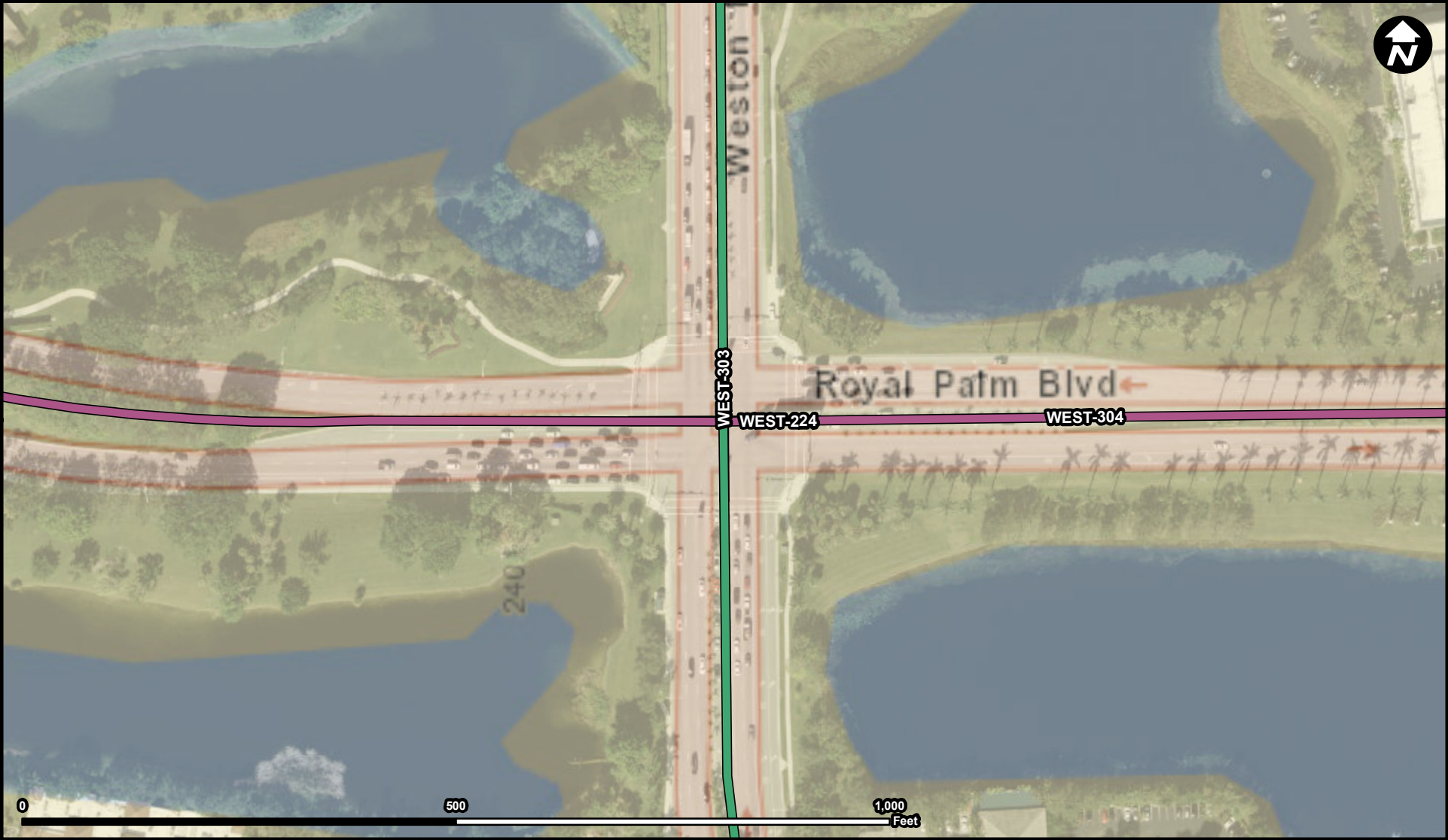
Traffic intersection improvements including signal or roundabout at Manatee Isles Drive and South Post Road

Construction of Traffic Signal at Manatee Isles Drive and South Post Road

**FROM:**

**To:**





**Legend**

- WEST-224
- WEST-303
- WEST-304
- Municipality
- Unincorporated

**Suggested Work Mix:** Traffic Circles, Speed Tables, Intersection Improvements

**Primary Work Mix:** Intersection

**Secondary Work Mix:**

**Project Description & Project Scope**

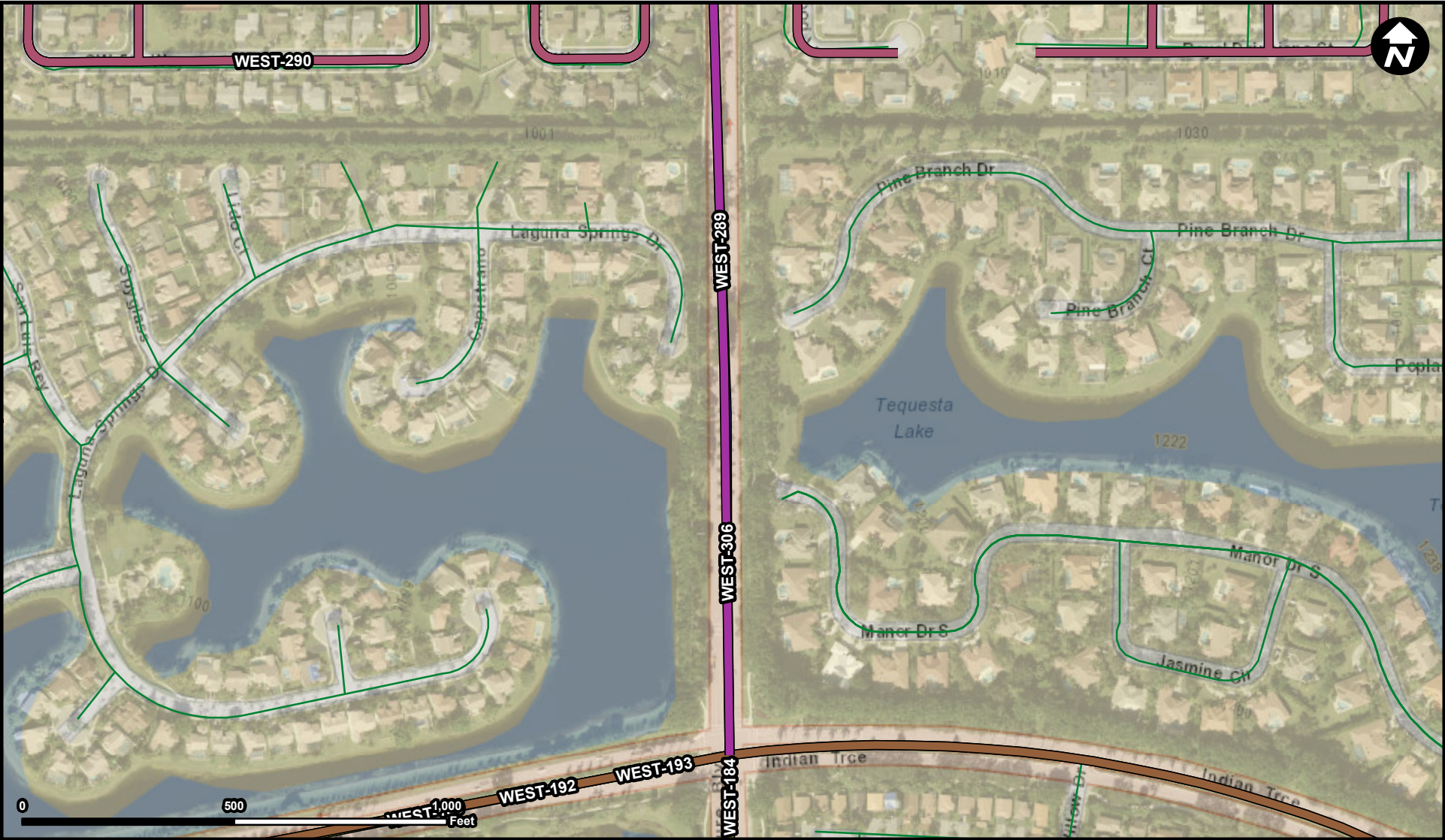
Intersection improvements of Weston Road and Royal Palm Blvd

Converting one Westbound through lane to a Southbound left turn lane to provide triple lefts on the east leg of Royal Palm Blvd. Widening and median reconstruction on west leg of Royal Palm Blvd. to provide a striped buffer between through lanes and dual

**FROM:**

**To:**





**Legend**

WEST-184	WEST-306
WEST-190	Municipality
WEST-192	Unincorporated
WEST-193	
WEST-289	
WEST-290	

**Suggested Work Mix:**

**Primary Work Mix:**

**Secondary Work Mix:**

**Project Description & Project Scope**

**Resiliency Improvements**

**Add Lanes**

Construction of additional storm water system facilities to improve drainage in rights-of-way.

Construction of additional stormwater facilities on Bonaventure Road, a major arterial within the City and primary route between BDD and ITDD districts of the City of Weston.

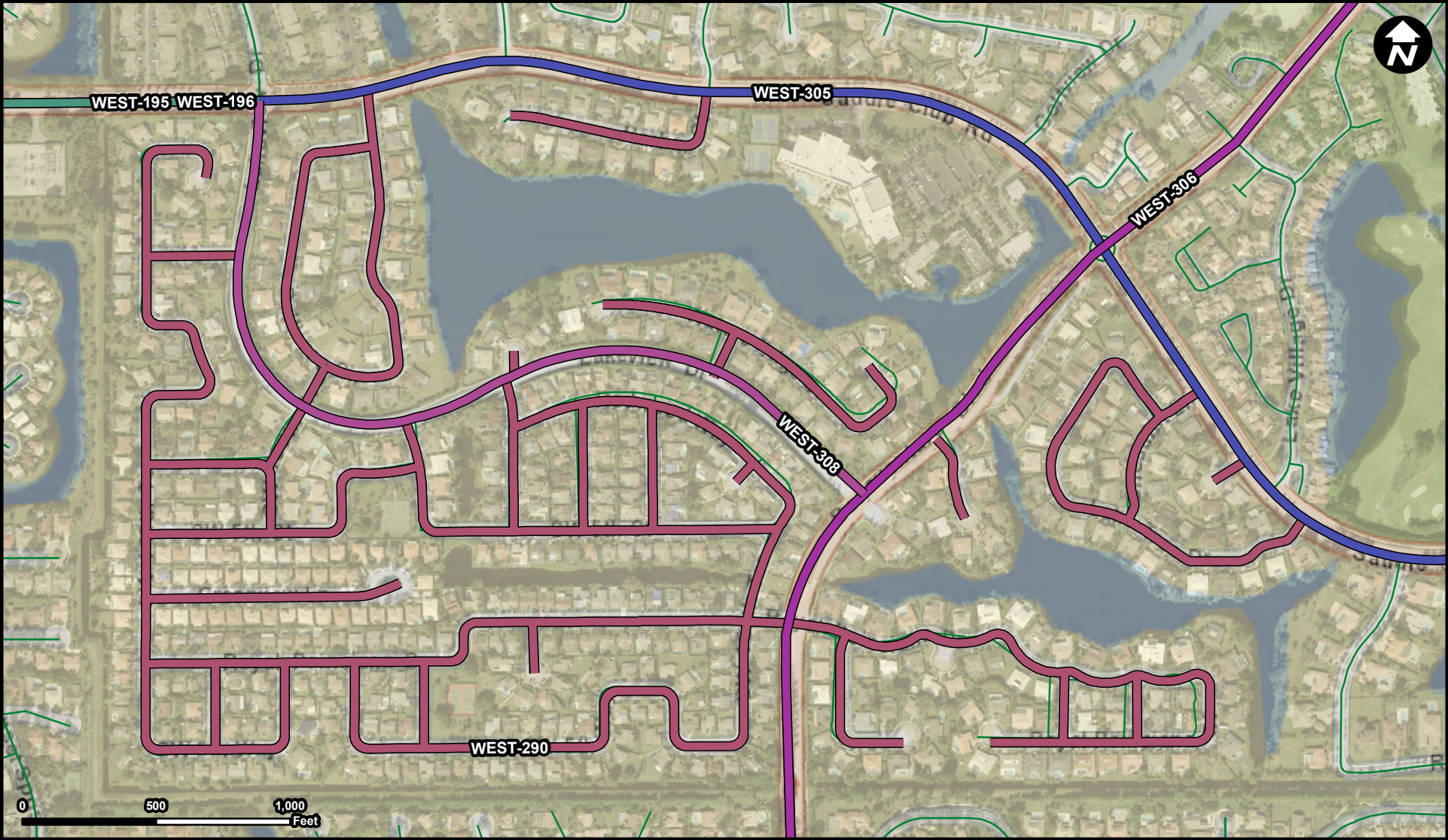
**FROM:** Bonaventure Blvd North of Indian Trace

**To:** Bonaventure Blvd at Canal



# WEST-290

**Project Name**  
Bonaventure Stormwater Improvement



**Legend**

	WEST-195		WEST-308
	WEST-196		Municipality
	WEST-289		Unincorporated
	WEST-290		
	WEST-305		
	WEST-306		

**Suggested Work Mix:**

**Primary Work Mix:** Resiliency Improvements

**Secondary Work Mix:** Add Lanes

**Project Description & Project Scope**

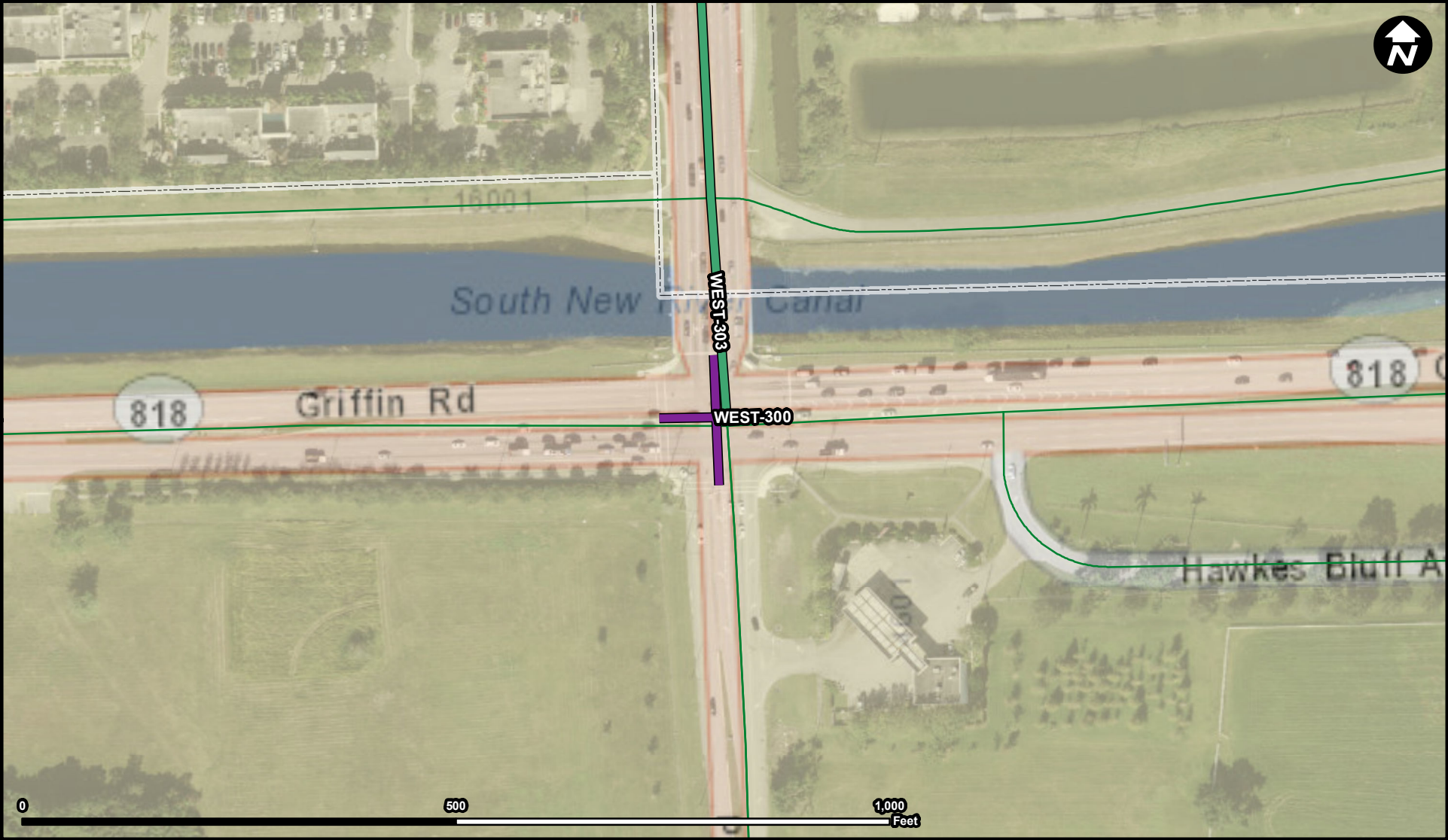
Construction of additional stormwater system facilities to improve drainage in rights-of-way.

Construction of additional stormwater system facilities to improve drainage in rights-of-way, ADA accessible ramps and sidewalk re-construction.

**FROM:**

**To:**





**Legend**

- WEST-300
- WEST-303
- Municipality
- Unincorporated

**Suggested Work Mix:** Traffic Circles, Speed Tables, Intersection Improvements

**Primary Work Mix:** Intersection

**Secondary Work Mix:** Add Turn Lane

**Project Description & Project Scope**

- Construction of 2nd WBRTL including signal modifications
- Construction of 2nd WBRTL

**FROM:**

**To:**





**Legend**

- WEST-301
- Municipality
- Unincorporated

**Suggested Work Mix:** Traffic Circles, Speed Tables, Intersection Improvements

**Primary Work Mix:** Safety Project

**Secondary Work Mix:** Intersection

**Project Description & Project Scope**

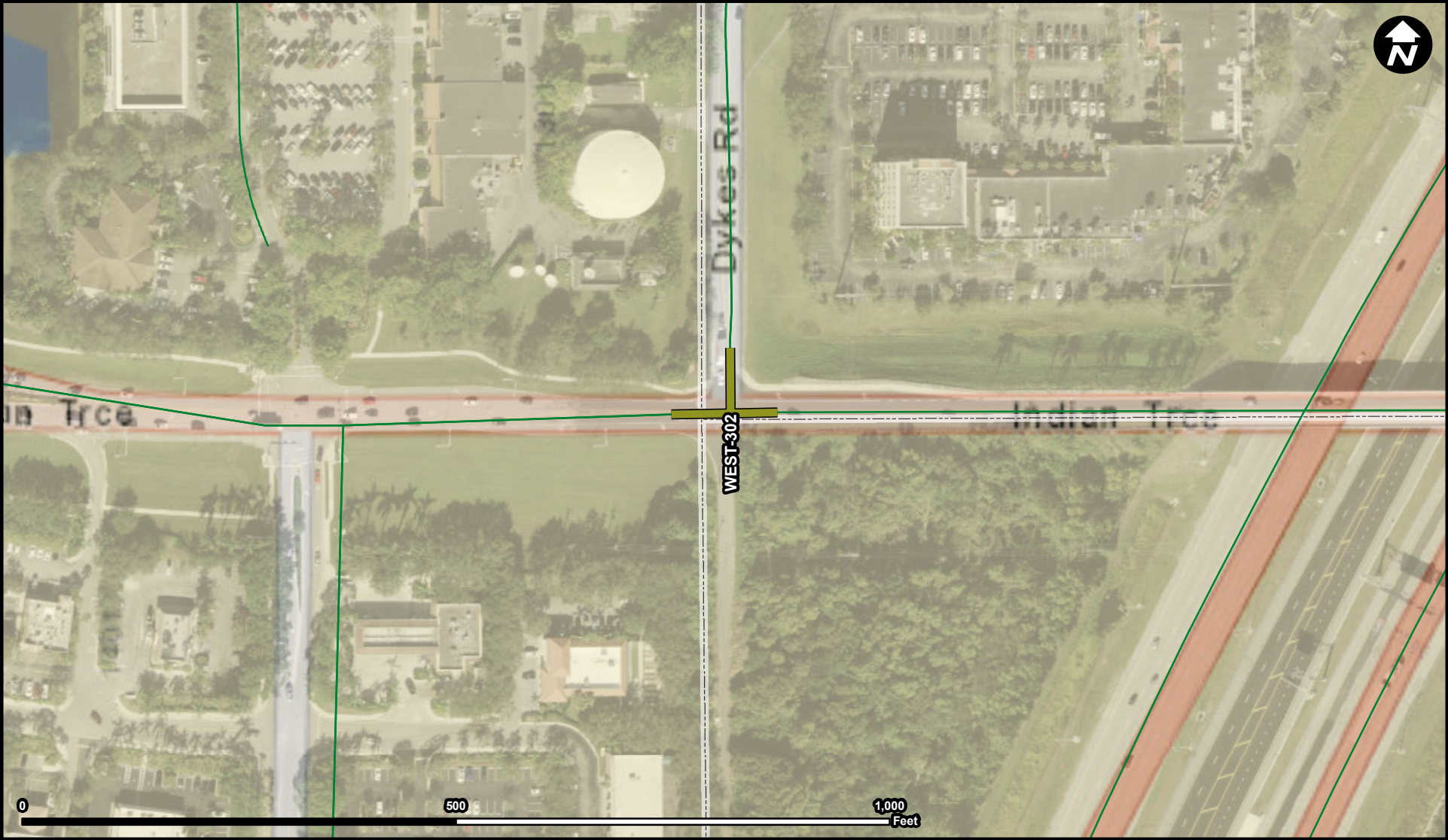
Conversion of 4-way stop controlled intersection to Traffic Circle

Design and Construction of Traffic Roundabout at Racquet Club Road and Blatt Blvd

**FROM:**

**To:**





**Legend**

- WEST-302
- Municipality
- Unincorporated

**Suggested Work Mix:** Traffic Circles, Speed Tables, Intersection Improvements

**Primary Work Mix:** Intersection

**Secondary Work Mix:** Add Lanes

**Project Description & Project Scope**

Intersection Safety Improvements (Geometry and Alignment)

Intersection safety improvements at Indian Trace @ SW 160th Avenue  
26.102330, -80.362619

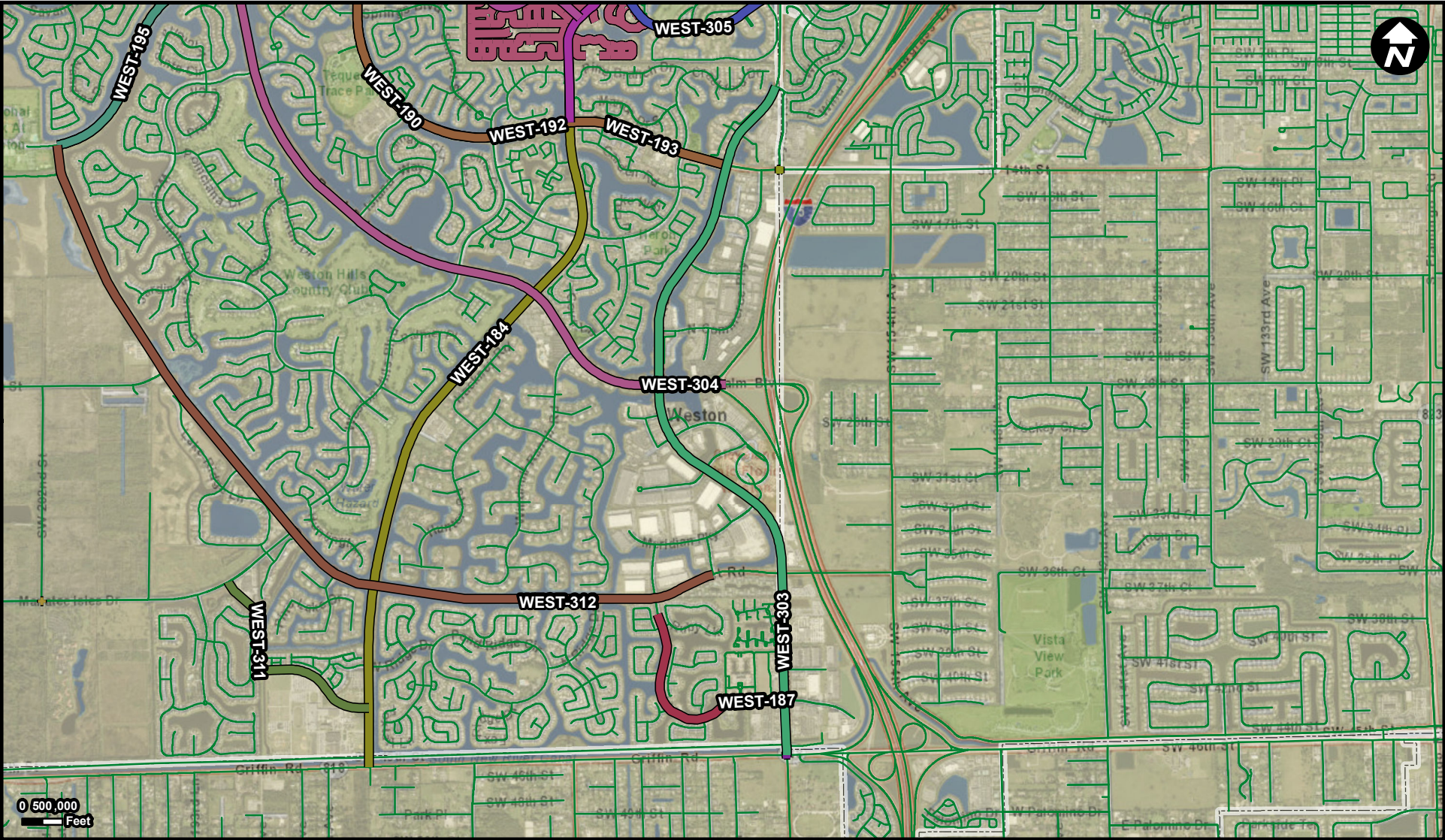
**FROM:**

**To:**



# WEST-303

**Project Name**  
Weston Rd Corridor RRR



**Legend**

WEST-184	WEST-195	WEST-300	WEST-308
WEST-187	WEST-196	WEST-302	WEST-311
WEST-190	WEST-222	WEST-303	WEST-312
WEST-192	WEST-224	WEST-304	
WEST-193	WEST-289	WEST-305	
WEST-194	WEST-290	WEST-306	

Municipality  
 Unincorporated

**Suggested Work Mix:** Bicycle Pedestrian Infrastructure  
**Primary Work Mix:**  
**Secondary Work Mix:** Bike Lane Sidewalk

**Project Description & Project Scope**

RRR of 4-Lane divided roadway including bike lanes

Construction of Improvements for ADA accessible ramps, sidewalks and re-construction of asphaltic roadway surface for bike lanes and vehicular traffic with associated pavement markings and signage.

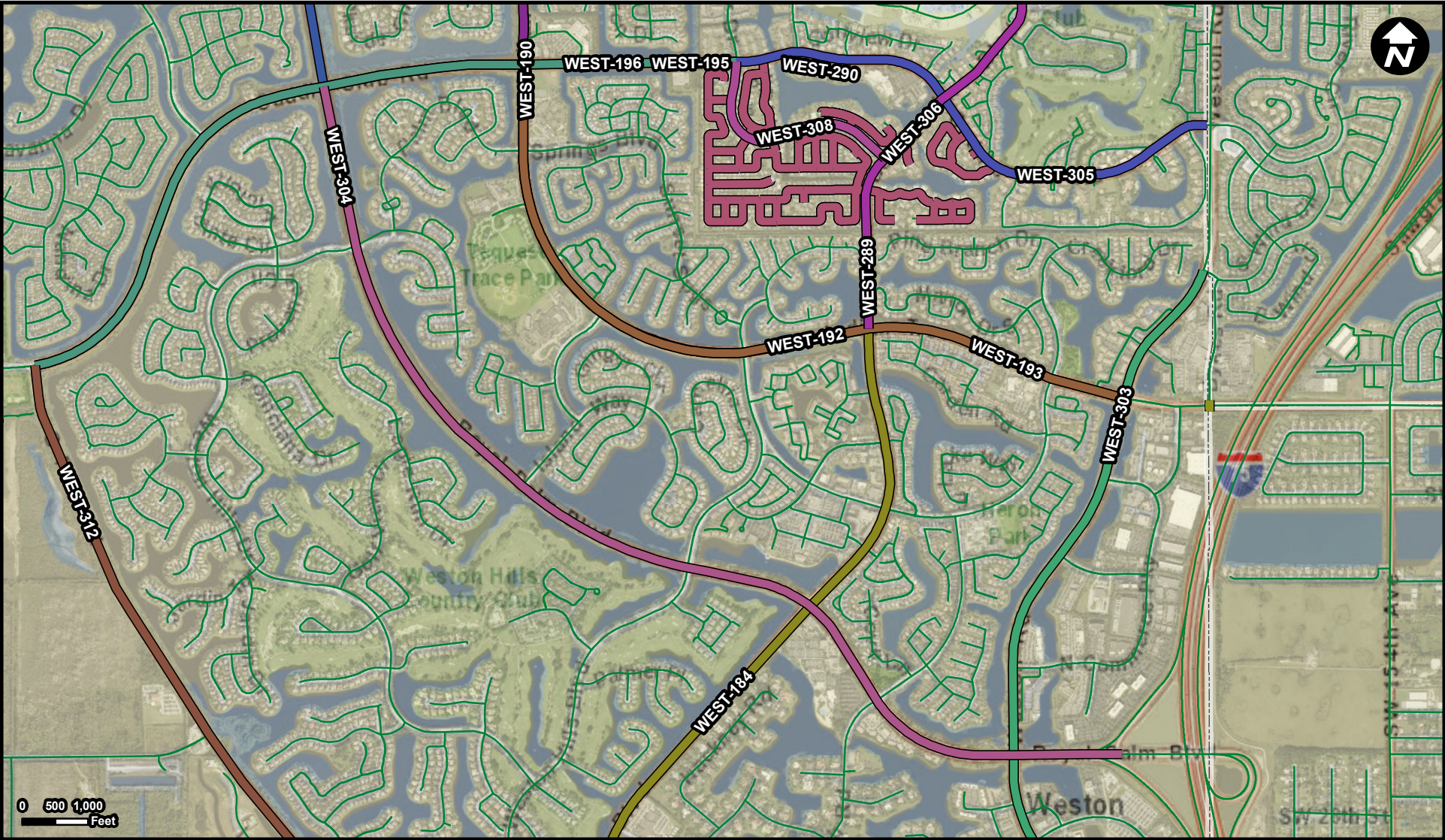
**FROM:** Weston Road At Griffin Road  
**To:** Weston Road at S New River Circle

Source: Broward Municipal Surtax Projects - BMPO; ESRI Basemap



WEST-304

Project Name  
Royal Palm Blvd RRR



**Legend**

WEST-184	WEST-195	WEST-303	Municipality
WEST-188	WEST-196	WEST-304	Unincorporated
WEST-190	WEST-224	WEST-305	
WEST-191	WEST-289	WEST-306	
WEST-192	WEST-290	WEST-308	
WEST-193	WEST-302	WEST-312	

**Suggested Work Mix:**

**Primary Work Mix:**

**Secondary Work Mix:**

**Project Description & Project Scope**

**Bicycle Pedestrian Infrastructure**

**Add Lanes**

**Bike Lane Sidewalk**

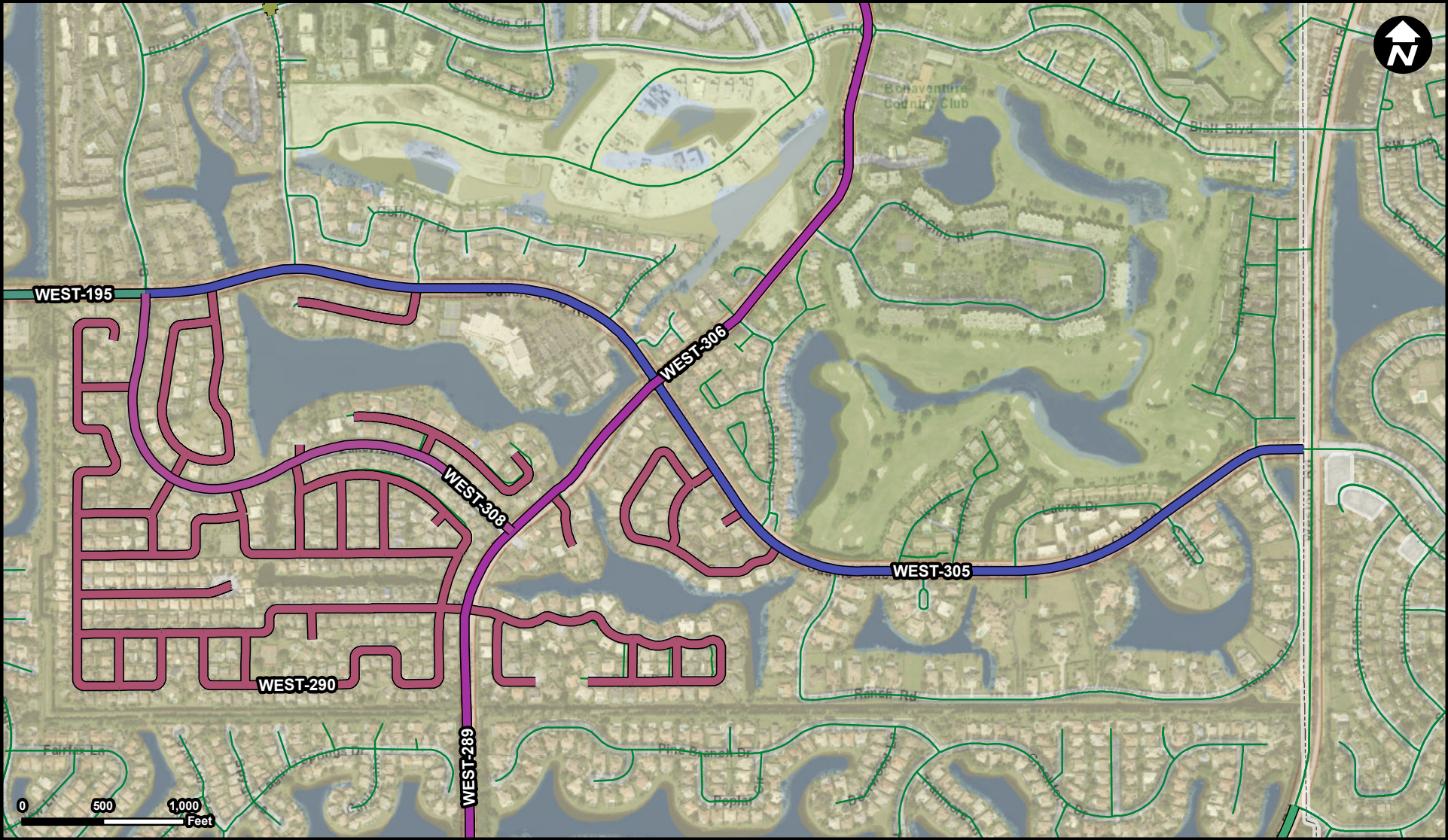
RRR of 4-Lane divided roadway including bike lanes

Construction of Improvements for ADA accessible ramps, sidewalks and re-construction of asphaltic roadway surface for bike lanes and vehicular traffic with associated pavement markings and signage.

**FROM:** Royal Palm Blvd at Weston Road

**To:** Royal Palm Blvd at Saddle Club Road





**Legend**

	WEST-195		WEST-305
	WEST-196		WEST-306
	WEST-289		WEST-308
	WEST-290		Municipality
	WEST-301		Unincorporated
	WEST-303		

**Suggested Work Mix:** Bicycle Pedestrian Infrastructure  
**Primary Work Mix:** Bike Lane Sidewalk  
**Secondary Work Mix:**

**Project Description & Project Scope**

Construction of 5' bike lanes from Lake View Dr to Weston Rd

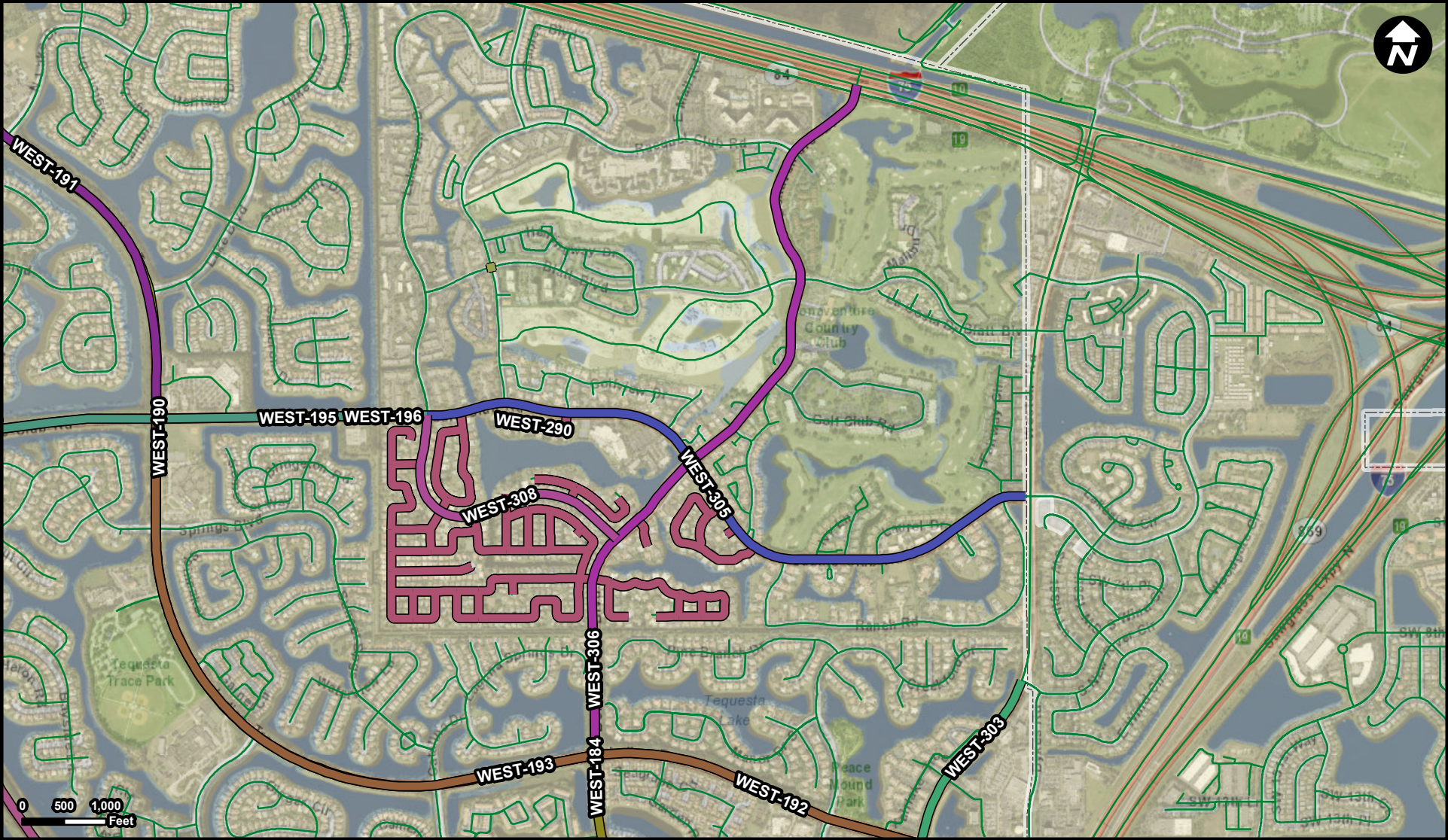
Construction of Bike Lanes on Saddle Club Road between Lakeview Drive and Weston Road in accordance with City of Weston Bike Master Plan

**FROM:** Saddle Club from Lakeview Drive  
**To:** Saddle Club Road at Weston Road



WEST-306

Project Name  
Bonaventure Blvd Bike Lanes



**Legend**

WEST-184	WEST-196	WEST-305
WEST-190	WEST-289	WEST-306
WEST-191	WEST-290	WEST-308
WEST-192	WEST-301	Municipality
WEST-193	WEST-303	Unincorporated
WEST-195	WEST-304	

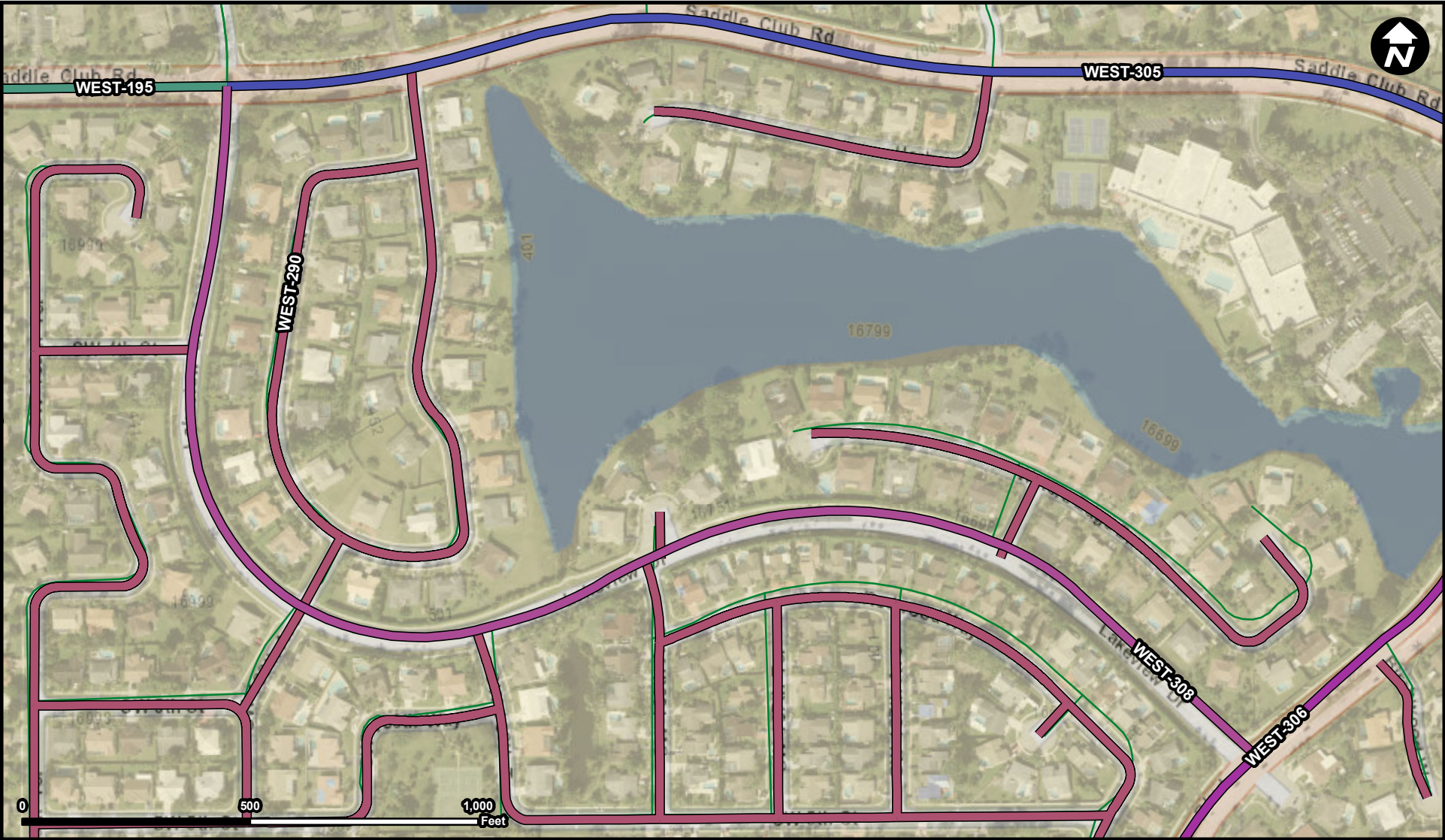
**Suggested Work Mix:** Bicycle Pedestrian Infrastructure  
**Primary Work Mix:** Bike Lane Sidewalk  
**Secondary Work Mix:** Signing/Pavement

**Project Description & Project Scope**

Construction of 5' bike lanes from Indian Trace to SR 84  
Construction of Bike lanes for connectivity to City Master Bike Plan

**FROM:** Bonaventure Blvd at Indian Trace  
**To:** Bonaventure Blvd at SR84





**Legend**

- WEST-195 Municipality
- WEST-196 Unincorporated
- WEST-290
- WEST-305
- WEST-306
- WEST-308

**Suggested Work Mix:** Bicycle Pedestrian Infrastructure

**Primary Work Mix:** Bike Lane Sidewalk

**Secondary Work Mix:** Safety Project

**Project Description & Project Scope**

School Zone Safety Improvements / Lake view Dr, Royal Poinciana, Saddle Club Rd

Construction of sidewalk connectivity and ADA accessible ramps to school route to Indian Trace Elementary on Lakeview Drive

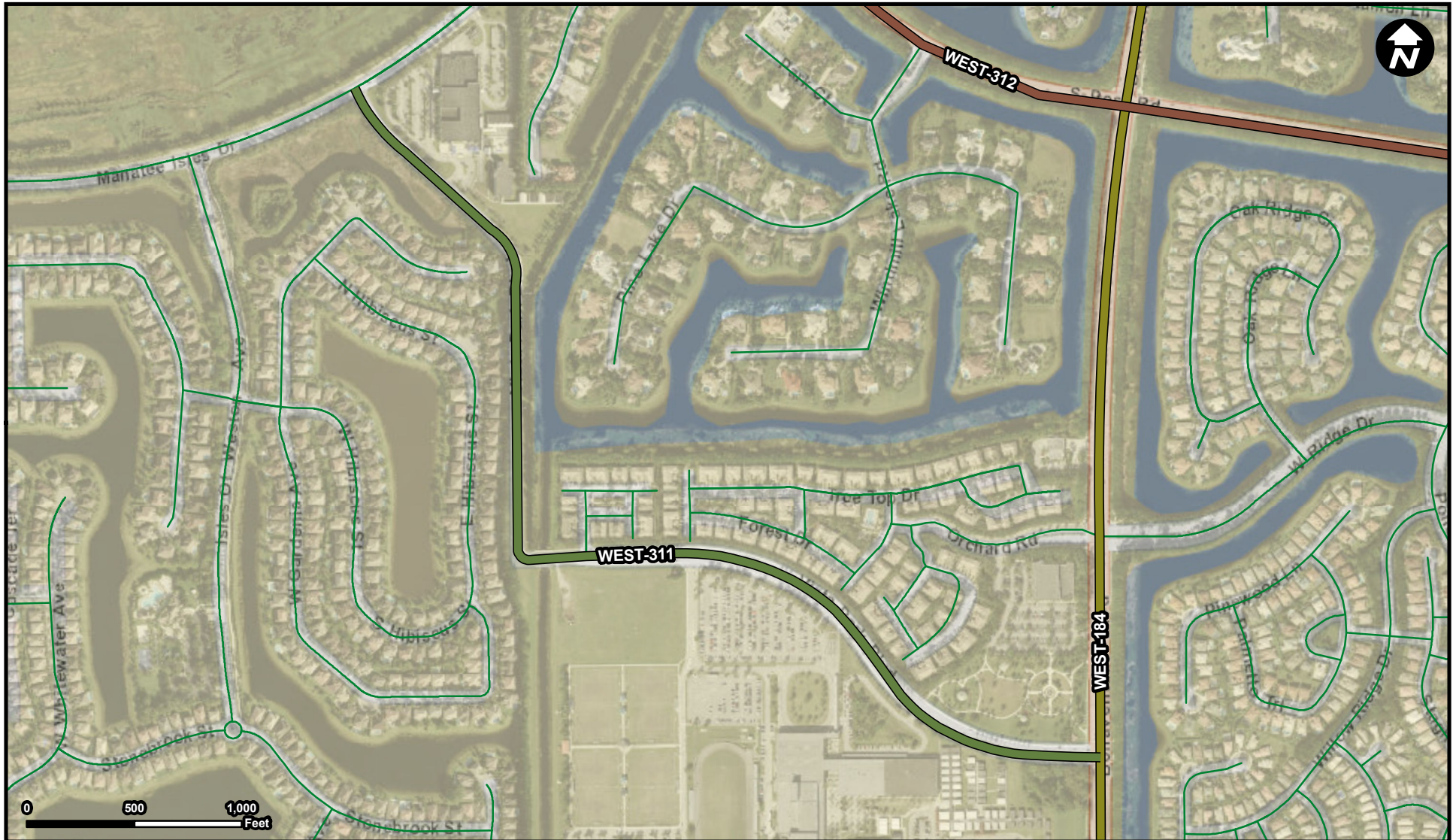
**FROM:** Lakeview Dr at Saddle Club Road

**To:** Lakeview Dr at Bonaventure Blvd








# WEST-311

**Project Name**  
Vista Park Blvd. RRR



### Legend

-  WEST-184  
 WEST-311  
 WEST-312  
 Municipality  
 Unincorporated

**Suggested Work Mix: Bicycle Pedestrian Infrastructure**

**Primary Work Mix:**

**Secondary Work Mix: Sidewalk**

## Project Description & Project Scope

RRR of 2-Lane undivided roadway / 4-Lane divided roadway

Construction of Improvements for ADA accessible ramps, sidewalks and re-construction of asphaltic roadway surface for bike lanes and vehicular traffic with associated pavement markings and signage.

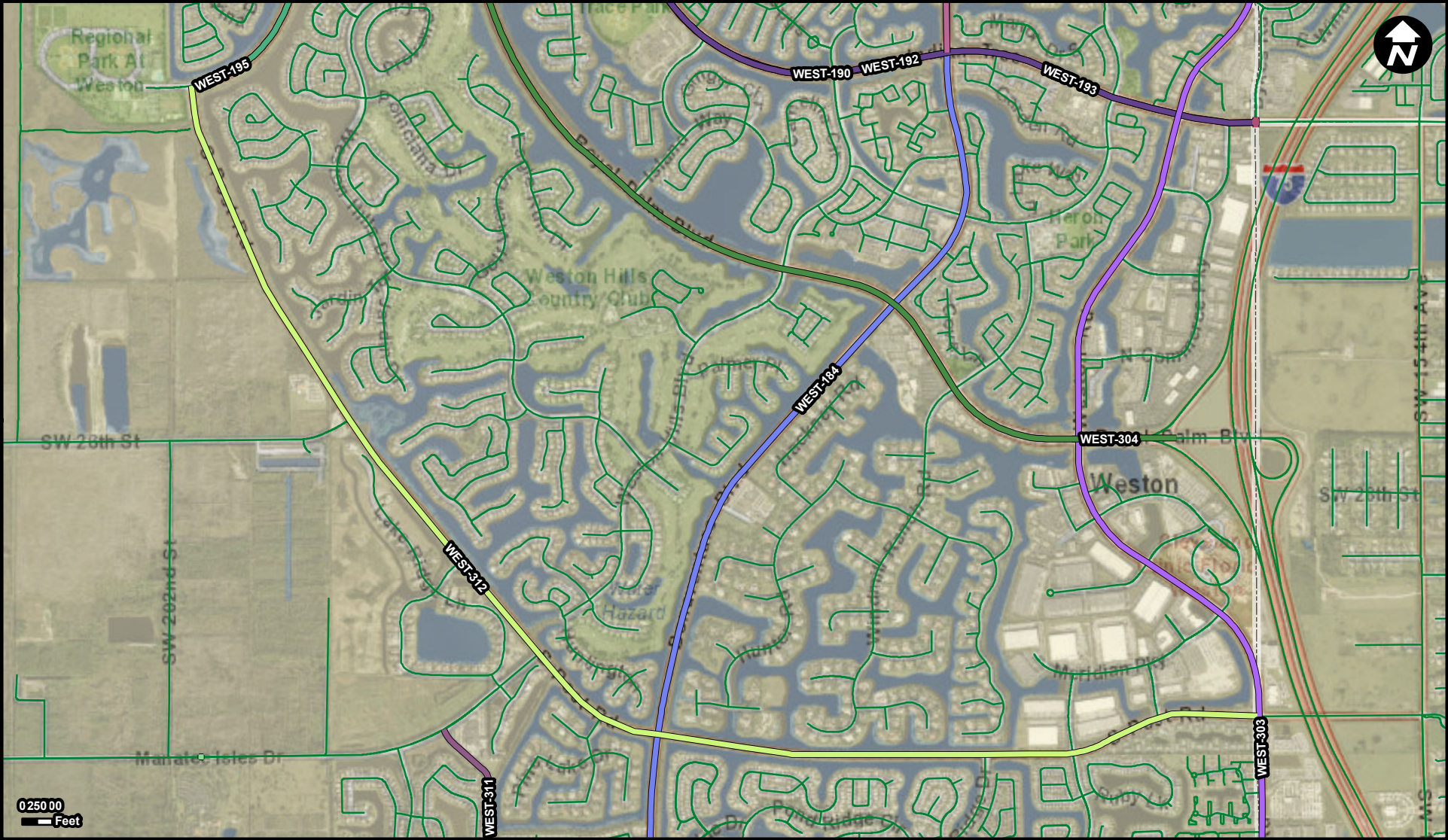
**FROM:** Vista Park Blvd at Bonaventure Blvd

**To:** Vista Park Blvd at Manatee Isle Drive



# WEST-312

**Project Name**  
South Post Road - Bike Lane Buffer Lane



**Legend**

WEST-184	WEST-196	WEST-304
WEST-190	WEST-222	WEST-306
WEST-192	WEST-224	WEST-311
WEST-193	WEST-289	WEST-312
WEST-194	WEST-302	Municipality
WEST-195	WEST-303	Unincorporated

**Suggested Work Mix:** Bicycle Pedestrian Infrastructure  
**Primary Work Mix:** Bike Lane Sidewalk  
**Secondary Work Mix:** Add Lanes

**Project Description & Project Scope**

Widening pavement to accommodate buffer lane for bike path  
Construction of additional roadway surface to accommodate widening for bike lane buffer

**FROM:** South Post Road at Weston Road  
**To:** South Post Road at Saddle Club Road

Source: Broward Municipal Surtax Projects - BMPO; ESRI Basemap