

Legend

- MARG-002
- Municipality
- Unincorporated

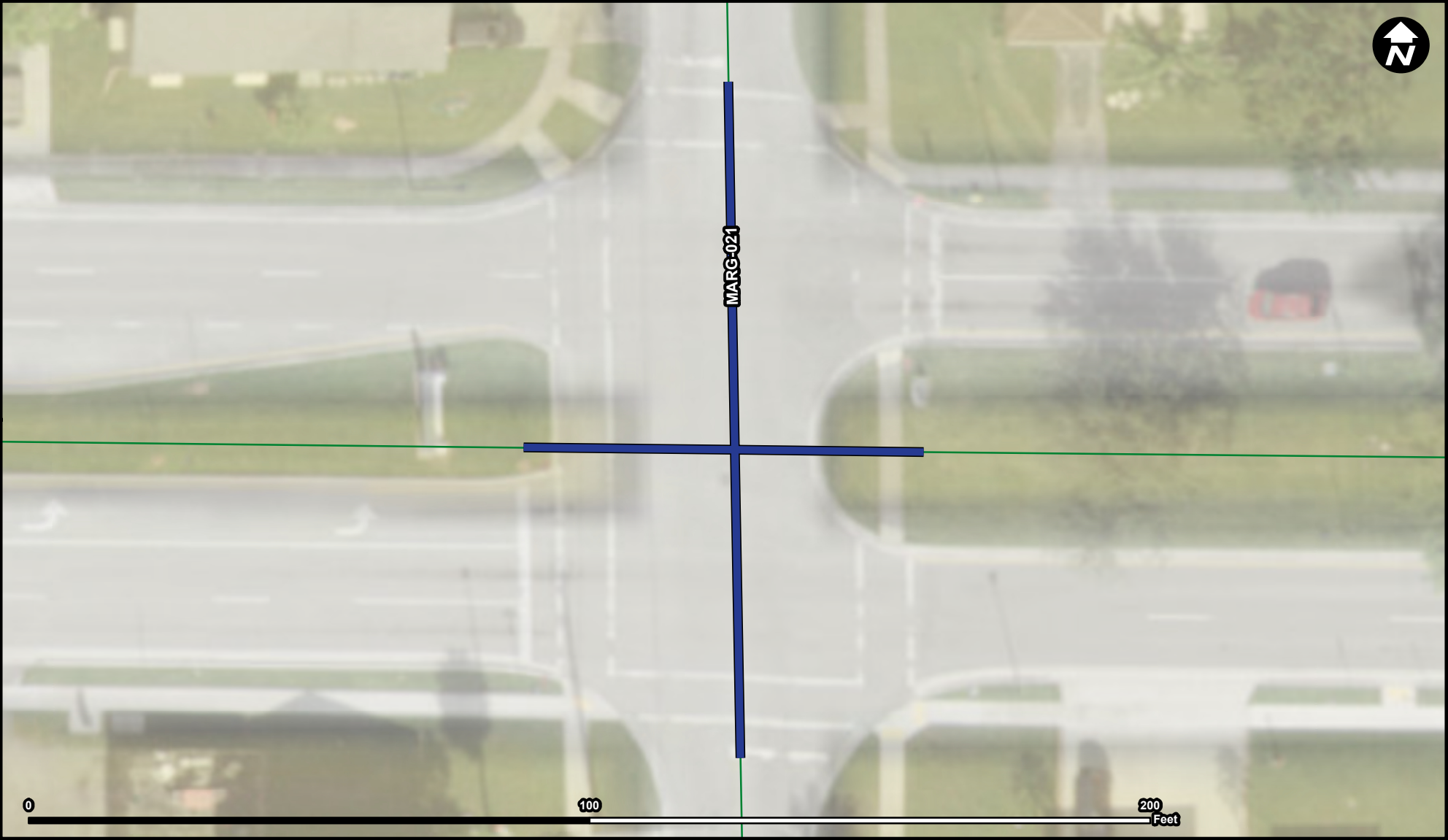
Suggested Work Mix:
Primary Work Mix:
Secondary Work Mix:

Bicycle Pedestrian Infrastructure
Safety Project
Intersection

Project Description & Project Scope

Improvements to Winfield Blvd. include sidewalks, crosswalks, and landscaping. Landscaping will be enhanced in the median located at the eastern section of the roadway. In addition, entrance signs and trees will be added as appropriate.

This project aims to create traffic calming and pedestrian improvements as a means to increase pedestrian safety along Winfield Blvd. This project includes additional sidewalks and crosswalks to create connectivity for pedestrians. The project also incor



Legend

- MARG-021
- Municipality
- Unincorporated

Suggested Work Mix: Traffic Circles, Speed Tables, Intersection Improvements
Primary Work Mix: Intersection
Secondary Work Mix: Safety Project

Project Description & Project Scope

Install traffic calming circles at NW 66th Ave and Margate Boulevard to improve traffic safety at this intersection.

Installation of a traffic calming circle and pedestrian crosswalks at the intersection of Margate Blvd and NW 66th Ave.

FROM:
To:



Legend

- MARG-022
- Municipality
- Unincorporated

Suggested Work Mix:
Primary Work Mix:
Secondary Work Mix:

Project Description & Project Scope

Traffic Circles, Speed Tables, Intersection Improvements
Intersection
Safety Project

Install traffic calming circles at Coral Gate Boulevard and Banks Road in order to improve traffic safety at this intersection.

Installation of a traffic calming circle and pedestrian crosswalks at the intersection of Coral Gate Blvd and Banks Road.

FROM:
To:



Legend

- MARG-033
- MARG-047
- Municipality
- Unincorporated

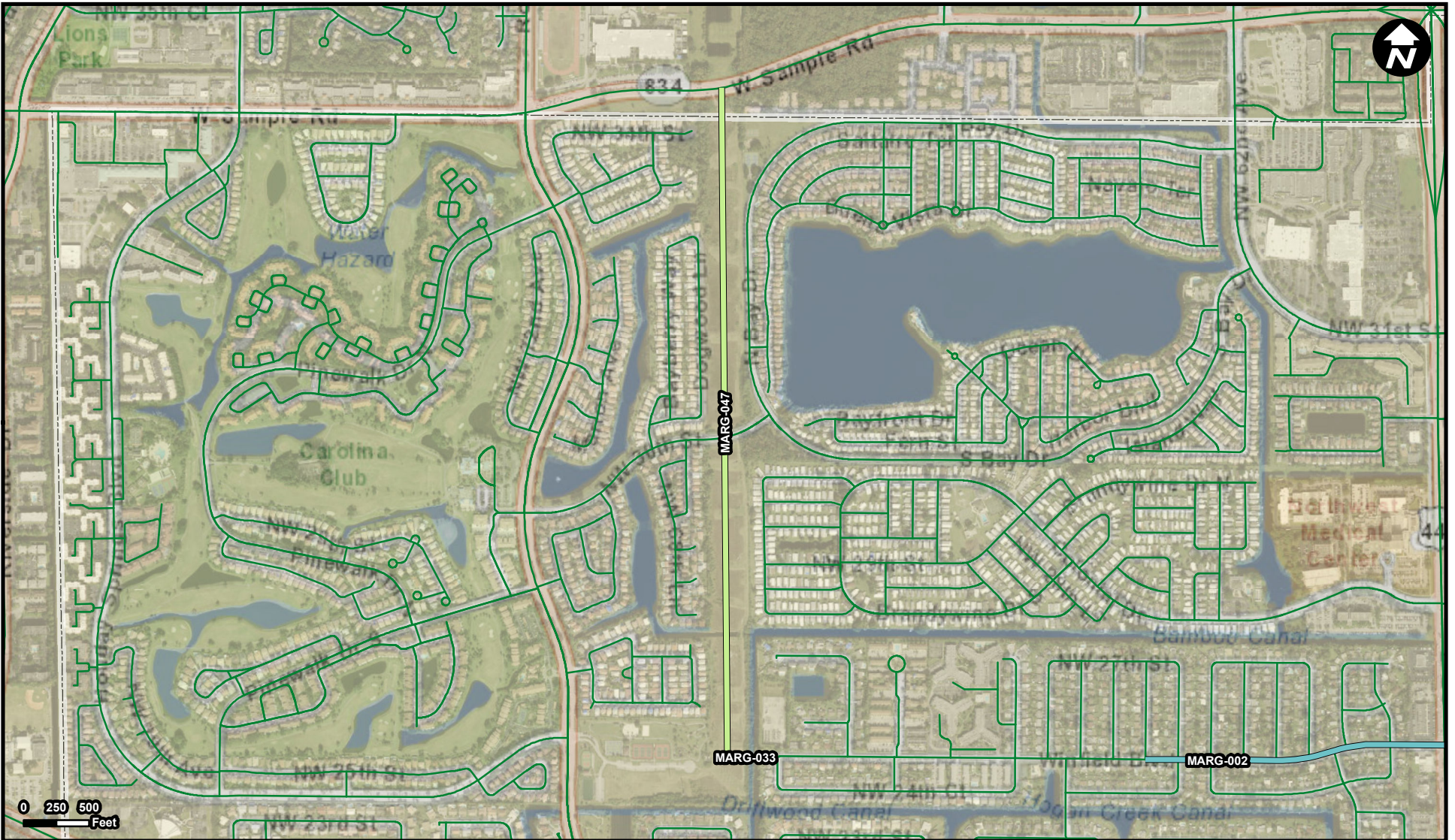
FROM: Eastern most portion of Firefighters Park -2500 Rock Island Rd, Margate, FL 33063
To: Just east of the One Mile Canal connecting to Winfield Blvd.

Suggested Work Mix:
Primary Work Mix: Bicycle Pedestrian Infrastructure
Secondary Work Mix: Bridge




Project Description & Project Scope

Safety Project
Construct a pedestrian bridge connecting the homes on and around Winfield Blvd. to Firefighters Park.

The pedestrian bridge will connect from Winfield Blvd to the eastern most portion of Fire Fighters Park. Firefighters Park is adjacent to an FPL easement which runs the entire length of Rock Island Road to Sample Road thus creating a safe route to school



Legend

- MARG-002
 MARG-033
 MARG-047
 Municipality
 Unincorporated

FROM: The eastern most portion of Firefighters Park - 2500 Rock Island Rd, Margate, FL 33063
To: Sample Road

Suggested Work Mix: Bicycle Pedestrian Infrastructure
Primary Work Mix: Bike Lane Sidewalk
Secondary Work Mix: Safety Project

Project Description & Project Scope	Construct bicycle/pedestrian greenways in order to foster safe off-road passageways for bicyclists and pedestrians in the City.
--	---

The Greenway project will consist of the construction of a multi-use path to allow pedestrians and bicyclists as safe passage to Sample Road. The length of the project will include bioswales, recycling containers, energy-efficient lighting, solar operate