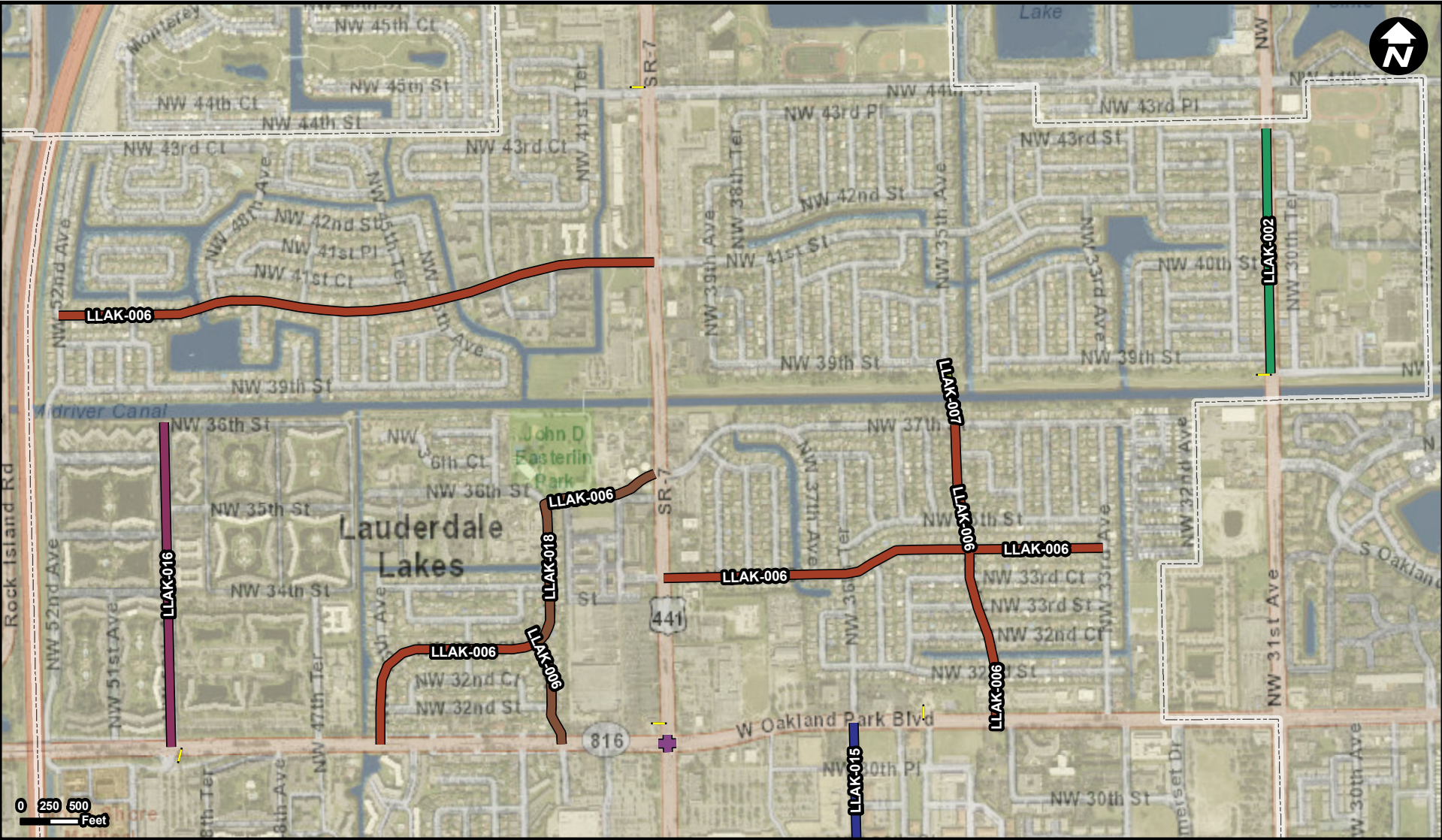


Legend

- LLAK-002
- LLAK-003
- Municipality
- Unincorporated

<b>Suggested Work Mix:</b>	<b>Bicycle Pedestrian Infrastructure</b>	<b>FROM:</b> NW 39 Street to the south
<b>Primary Work Mix:</b>	<b>Safety Project</b>	<b>To:</b> North of NW 43 Street, i.e. City's limit to the north
<b>Secondary Work Mix:</b>	<b>Sidewalk</b>	
<b>Project Description &amp; Project Scope</b>	Sidewalk, bike lanes, pedestrian cross walks, decorative landscaping, road & drainage Sound barrier wall to the east and safety improvement on the west side of the Road. Drainage and pavement for the connected NW 30 Terrace .	





Legend

- LLAK-002
- LLAK-003
- LLAK-006
- LLAK-007
- LLAK-015
- LLAK-016
- LLAK-017
- LLAK-018
- Municipality
- Unincorporated

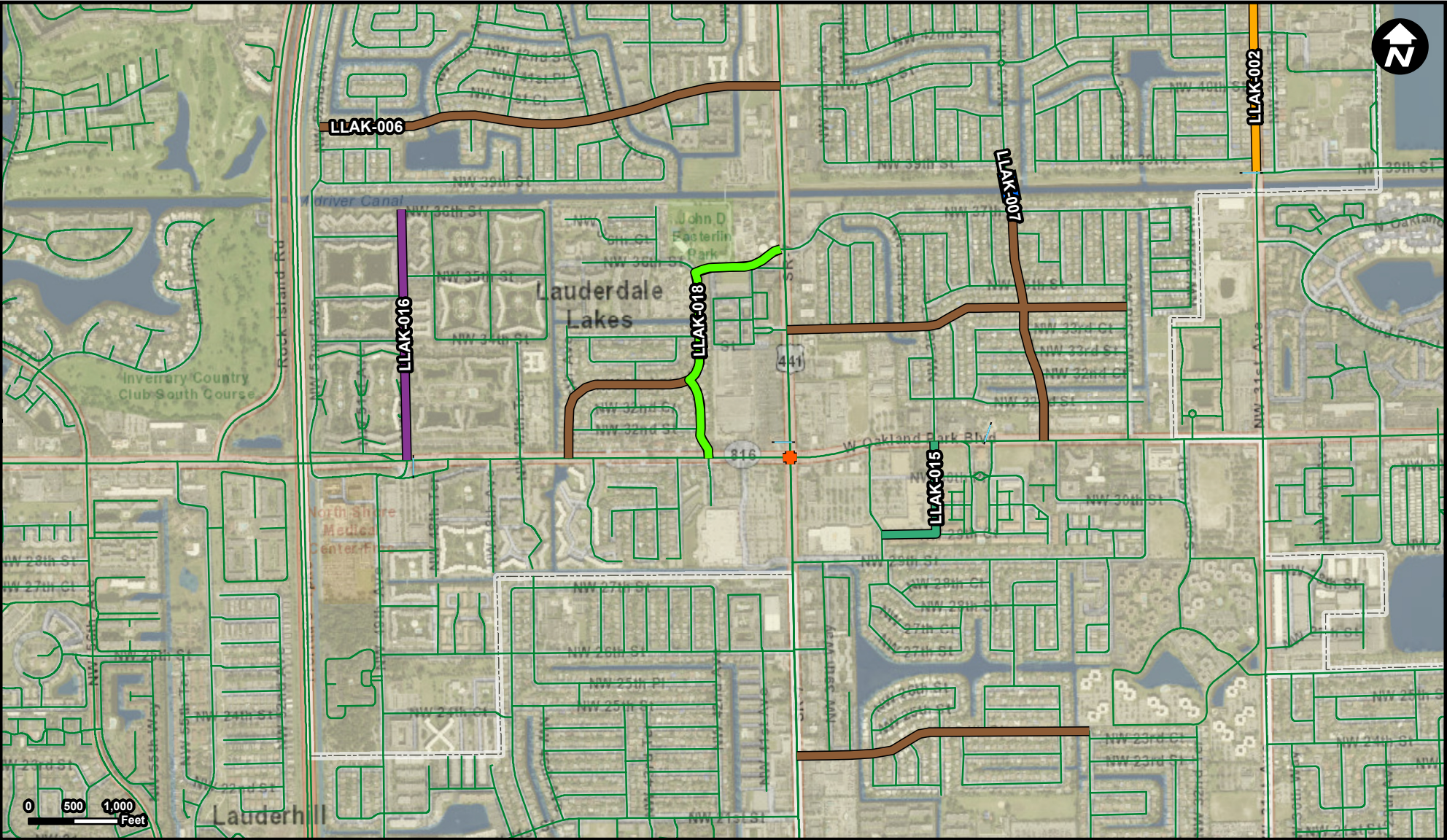
**Suggested Work Mix:** Landscaping, Hardscape, Signage  
**Primary Work Mix:** ITS  
**Secondary Work Mix:** Landscaping

**Project Description & Project Scope**

Artistic Gateway System  
The scope will include Gateway Signage with Digital Display Electronic System. It will have ornamental wall structures in compliance with the City's outlook.

**FROM:**  
**To:**





Legend

- LLAK-002
- LLAK-003
- LLAK-006
- LLAK-007
- LLAK-015
- LLAK-016
- LLAK-017
- LLAK-018
- Municipality
- Unincorporated

**Suggested Work Mix:**  
**Primary Work Mix:**  
**Secondary Work Mix:**

**Project Description & Project Scope**

**Traffic Circles, Speed Tables, Intersection Improvements**  
**Safety Project**  
**Safety Project**

Installation of traffic calming devices (i.e. speed humps, warning signs, pavement markings, etc.) citywide.

Most residential streets within the City has a speed limit of 30 MPH. The project main goal is to reduce speeding and cut through on residential streets and improve the quality of life of the residents by using traffic calming strategies such as raised i





Legend

- LLAK-007
- Municipality
- Unincorporated

**Suggested Work Mix:**  
**Primary Work Mix:**  
**Secondary Work Mix:**

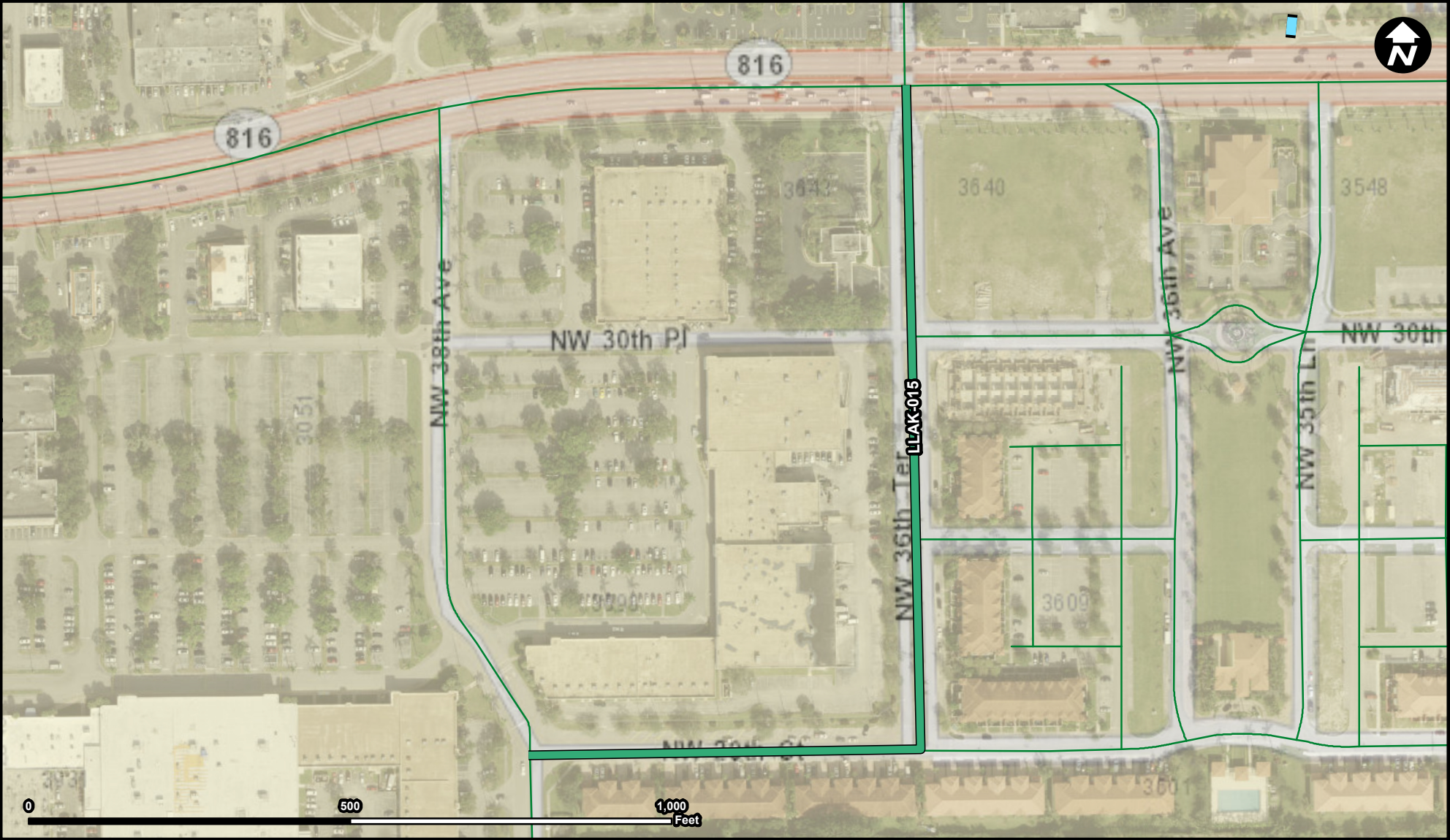
**Project Description & Project Scope**

**FROM:** NW 35 Avenue on the south side of SFWMD C-13 Canal  
**To:** NW 35 Avenue on the north side of SFWMD C-13 Canal

**Bridge Safety Project**  
**Safety Project**  
Construction of a new pedestrian bridge over C-13 Canal

About 250 linear feet pedestrian steel bridge connecting pedestrian walkway on both sides of SFWMD C-13 canal along NW 35 Avenue in the City of Lauderdale Lakes, Florida.





Legend

- LLAK-003
- LLAK-015
- Municipality
- Unincorporated

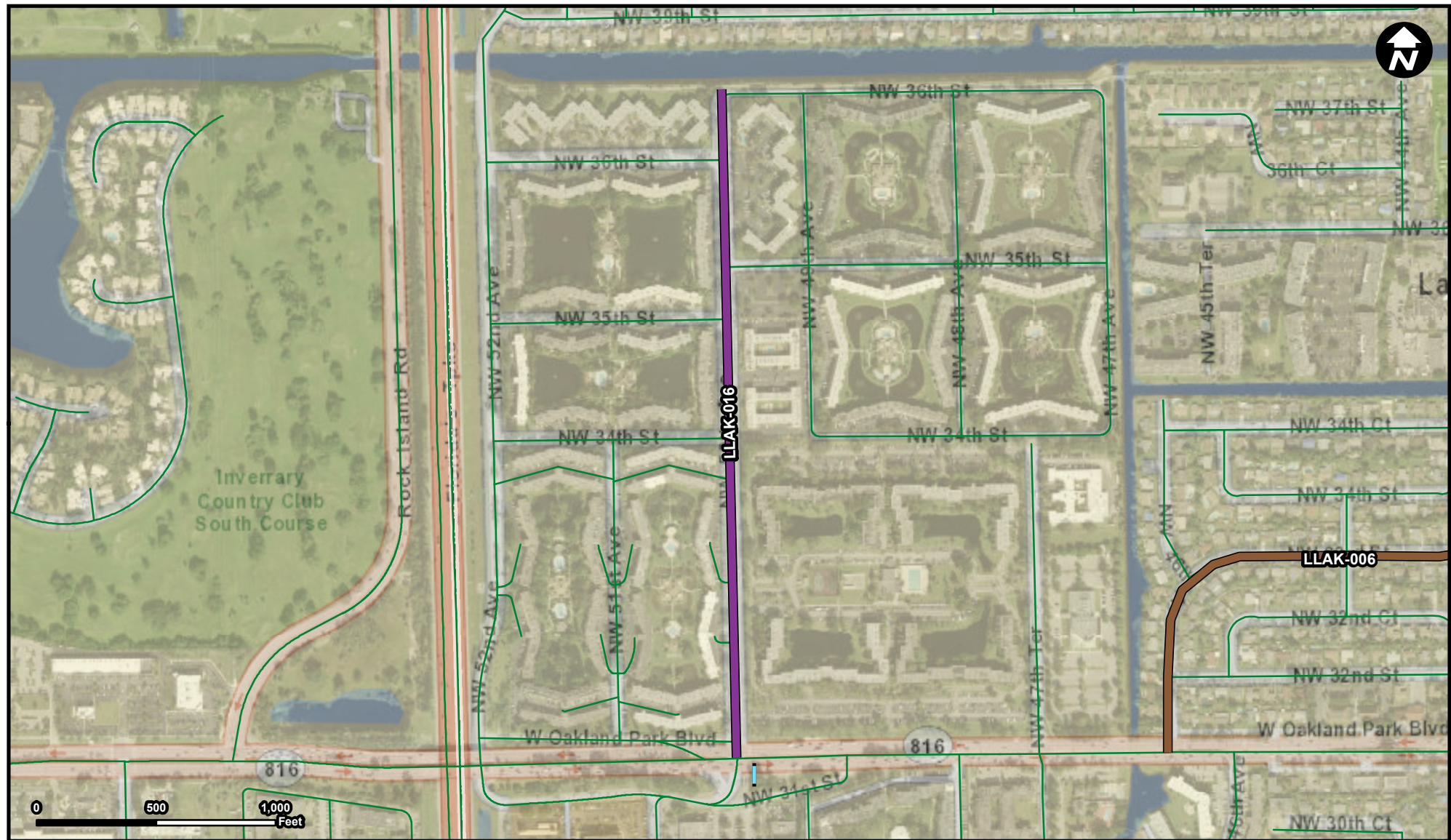
FROM: Oakland Park Blvd  
To: NW 38th Avenue

**Suggested Work Mix:**  
**Primary Work Mix:**  
**Secondary Work Mix:**  
**Project Description & Project Scope**

**Bicycle Pedestrian Infrastructure**  
**Landscaping**  
**Safety Project**  
Beautification, median improvements, traffic calming, bike lane, drainage improvements  
Project consists in the beautification of NW 36th Terrace from Oakland Park Blvd to NW 28th Avenue. Improvements includes: median and curb improvements, lane reduction, traffic control devices installation, landscaping and drainage.

Source: Broward Municipal Surtax Projects - BMPO; ESRI Basemap





Legend

- LLAK-003
- LLAK-006
- LLAK-016
- Municipality
- Unincorporated

**Suggested Work Mix:**  
**Primary Work Mix:**  
**Secondary Work Mix:**

**Bicycle Pedestrian Infrastructure**  
**Safety Project**  
**Landscaping**

Beautification, traffic calming, drainage improvements

**Project Description & Project Scope**

NW 50th Avenue is approximately 0.52 mile from the C-13 canal to Oakland Park Blvd. This project consists in the installation of landscaping, median improvement, lane reduction, bike lane, traffic calming devices installation and drainage improvements

**FROM:** C-13 Canal  
**To:** Oakland Park Blvd





Legend

- LLAK-017
- Municipality
- Unincorporated

**Suggested Work Mix:**  
*Primary Work Mix:*  
*Secondary Work Mix:*  
**Project Description & Project Scope**

**Bicycle Pedestrian Infrastructure Safety Project Intersection**  
Safety assesement to improve pedestrian safety along State road 7 and Oakland Park Blvd corridors  
The scope includes feasibility study to formulate

FROM:  
To:





LLAK-018

Unincorporated

Source: Broward Municipal Surtax Projects - BMPO; ESRI Basemap