




Legend

-  HOLL-035
-  Municipality
-  Unincorporated

Suggested Work Mix:
Primary Work Mix:
Secondary Work Mix:

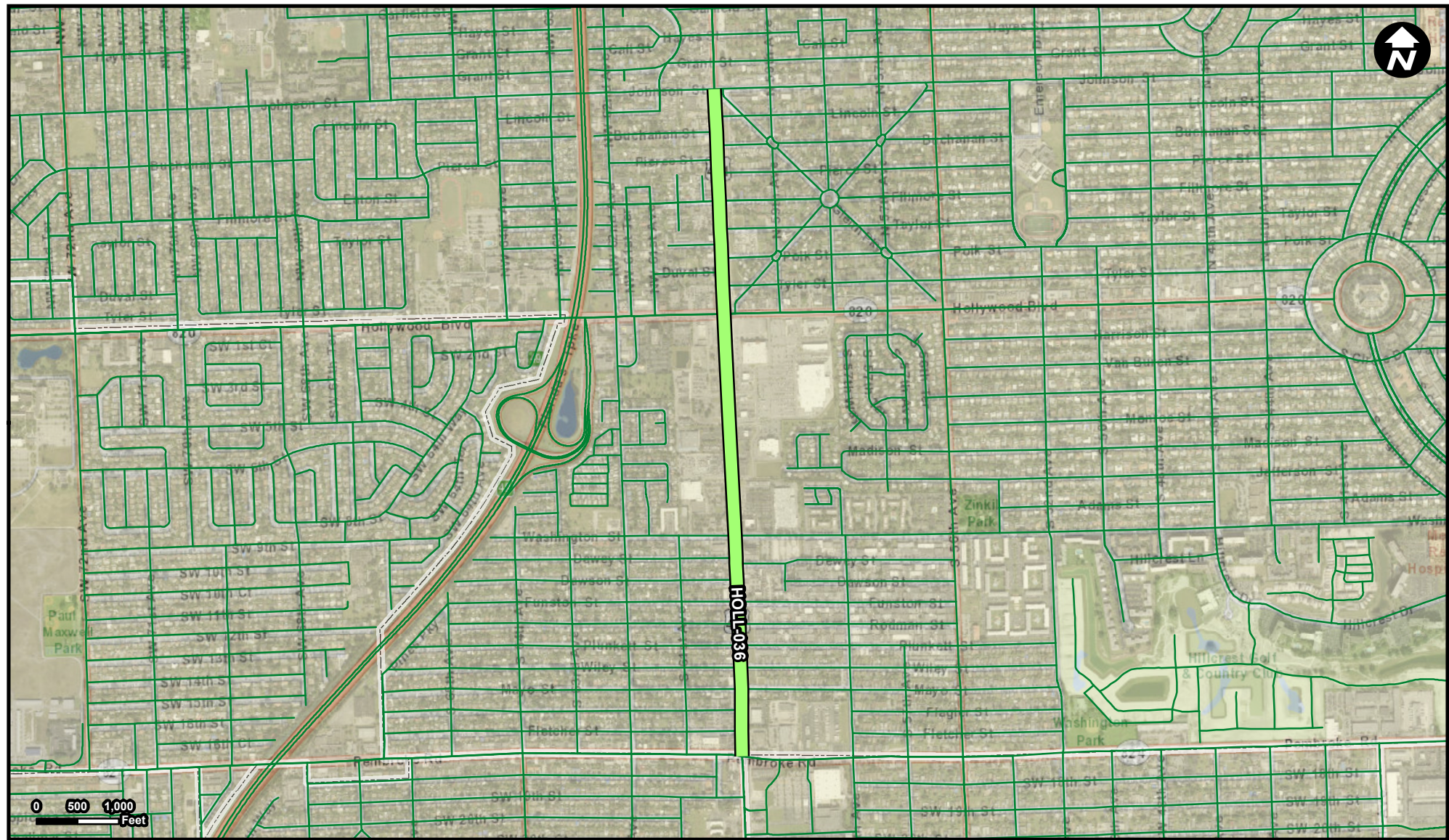
Project Description & Project Scope

FROM: From the east end of City Hall Circle
To: Dixie Highway




Capacity Increase, Widening
New Road Construction
Bike Lane Sidewalk

City portion of \$6.8 million MPO funded "Complete Streets" improvement project including paved sidewalks, bike lanes, pedestrian lighting, transit amenities, landscaping, safety median, traffic signal upgrades and crosswalks.

One half-mile new roadway configuration to include storm water drainage, center landscaped medians, parallel parking, bicycle lanes,



Legend

-  HOLL-036
-  Municipality
-  Unincorporated

Suggested Work Mix:
Primary Work Mix:
Secondary Work Mix:

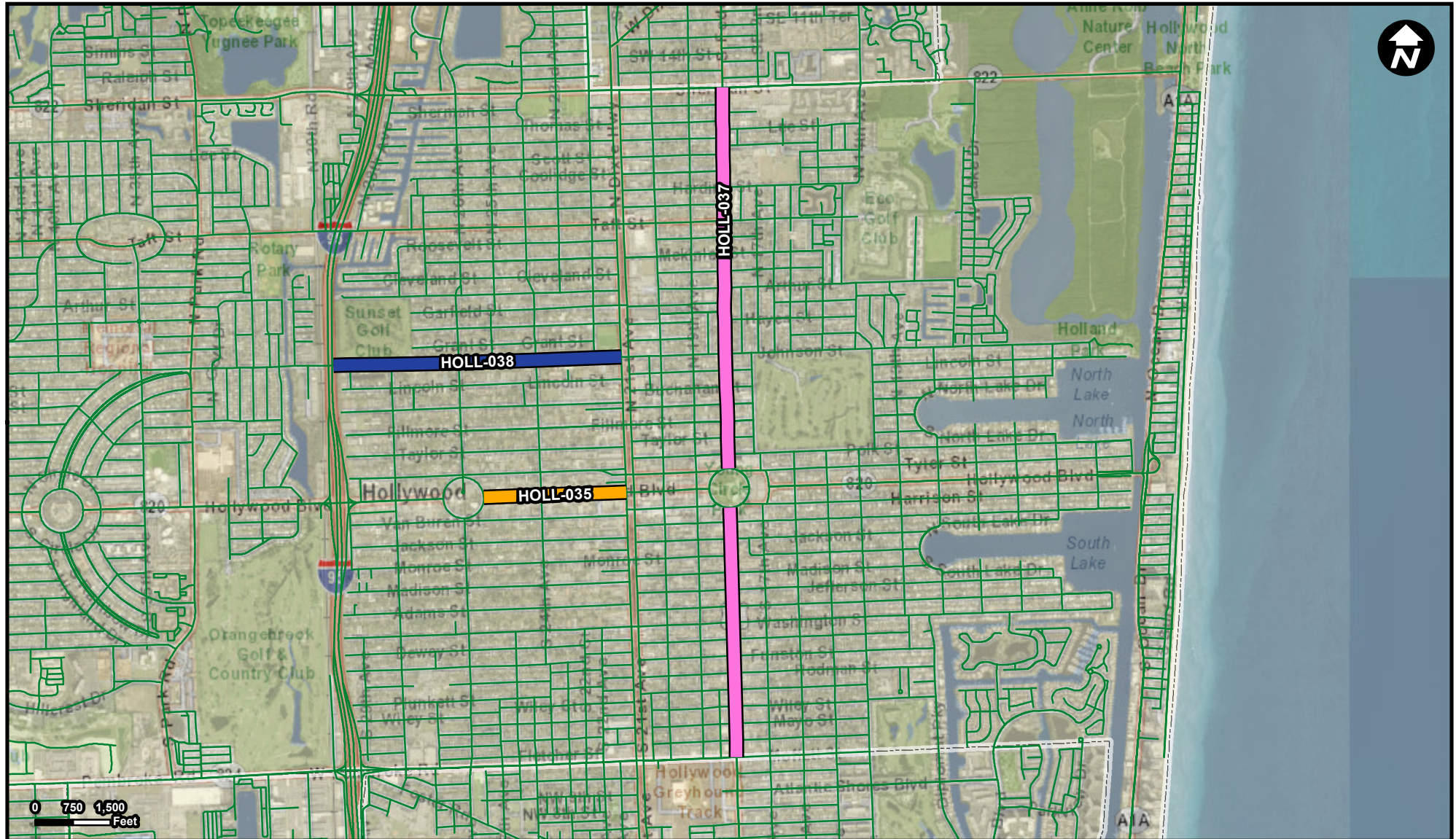
Project Description & Project Scope

Bicycle Pedestrian Infrastructure Lighting
Transit Improvement

City contribution to \$60 million FDOT improvement project to fund mobility hubs; pedestrian access to the linear park; lighting; play & exercise equipment, shade structure, drinking fountains; wayfinding signage; traffic calming; paved parking.

Installation of pedestrian scale lighting on east side of roadway and placement of additional bus shelters, bike racks, trash receptacles in high

FROM: Johnson St
To: Pembroke Road



Legend

- HOLL-035
- HOLL-037
- HOLL-038
- Municipality
- Unincorporated

Suggested Work Mix:
Primary Work Mix:
Secondary Work Mix:

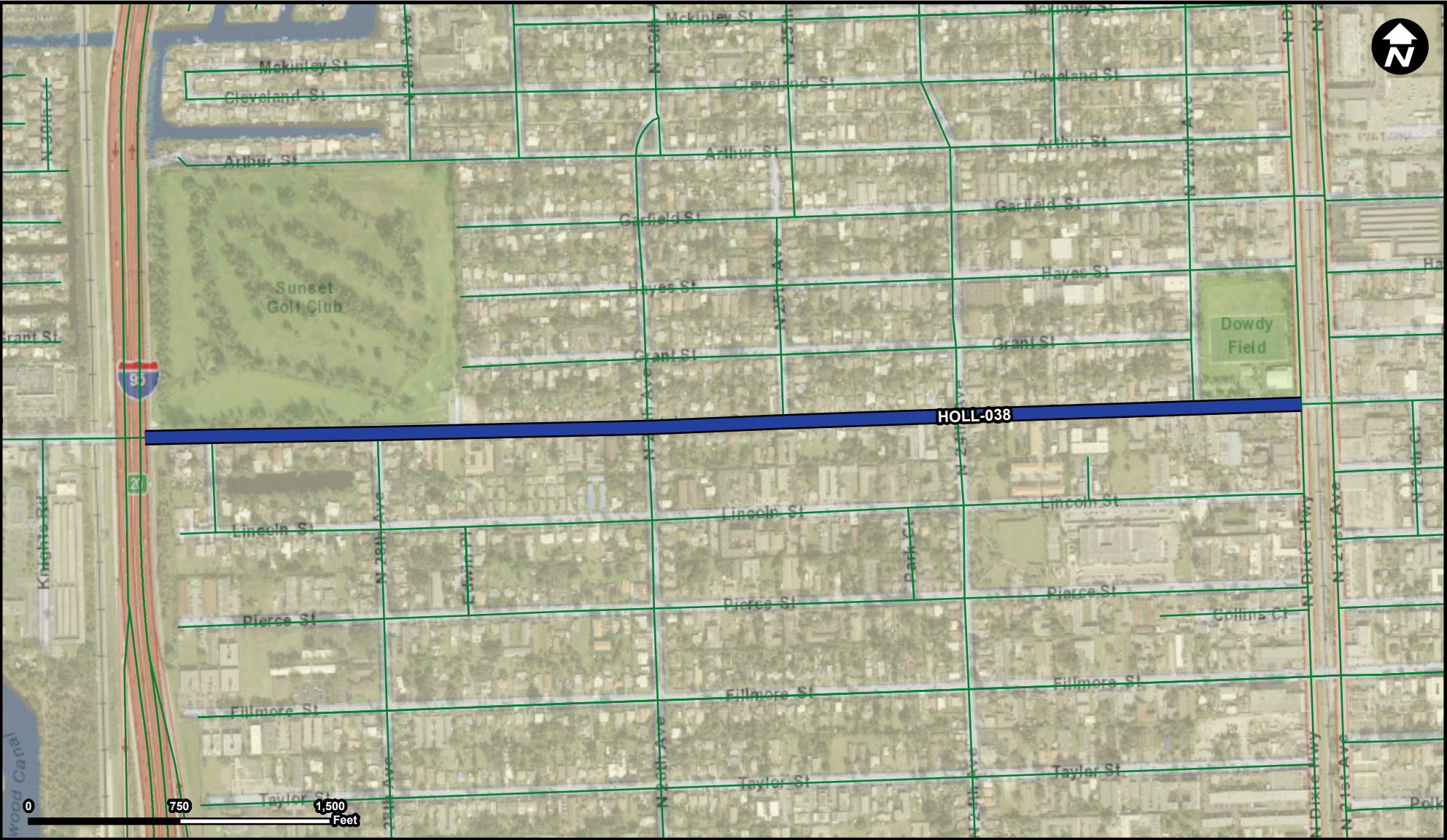
Bicycle Pedestrian Infrastructure
Bike Lane Sidewalk
Lighting

Project Description & Project Scope




Installation of "Complete Streets" improvements including designated bike lanes, pedestrian level lighting, transit amenities, sidewalk enhancements, crosswalk upgrades, landscaping and signalization upgrades.

Lane width reduction to provide full width bike lane, pedestrian scale lighting in fill in heavy use pedestrian area, additional landscaping to

FROM: Sheridan St
To: Pembroke Road



Legend

-  HOLL-038
-  Municipality
-  Unincorporated

Suggested Work Mix:
Primary Work Mix:
Secondary Work Mix:

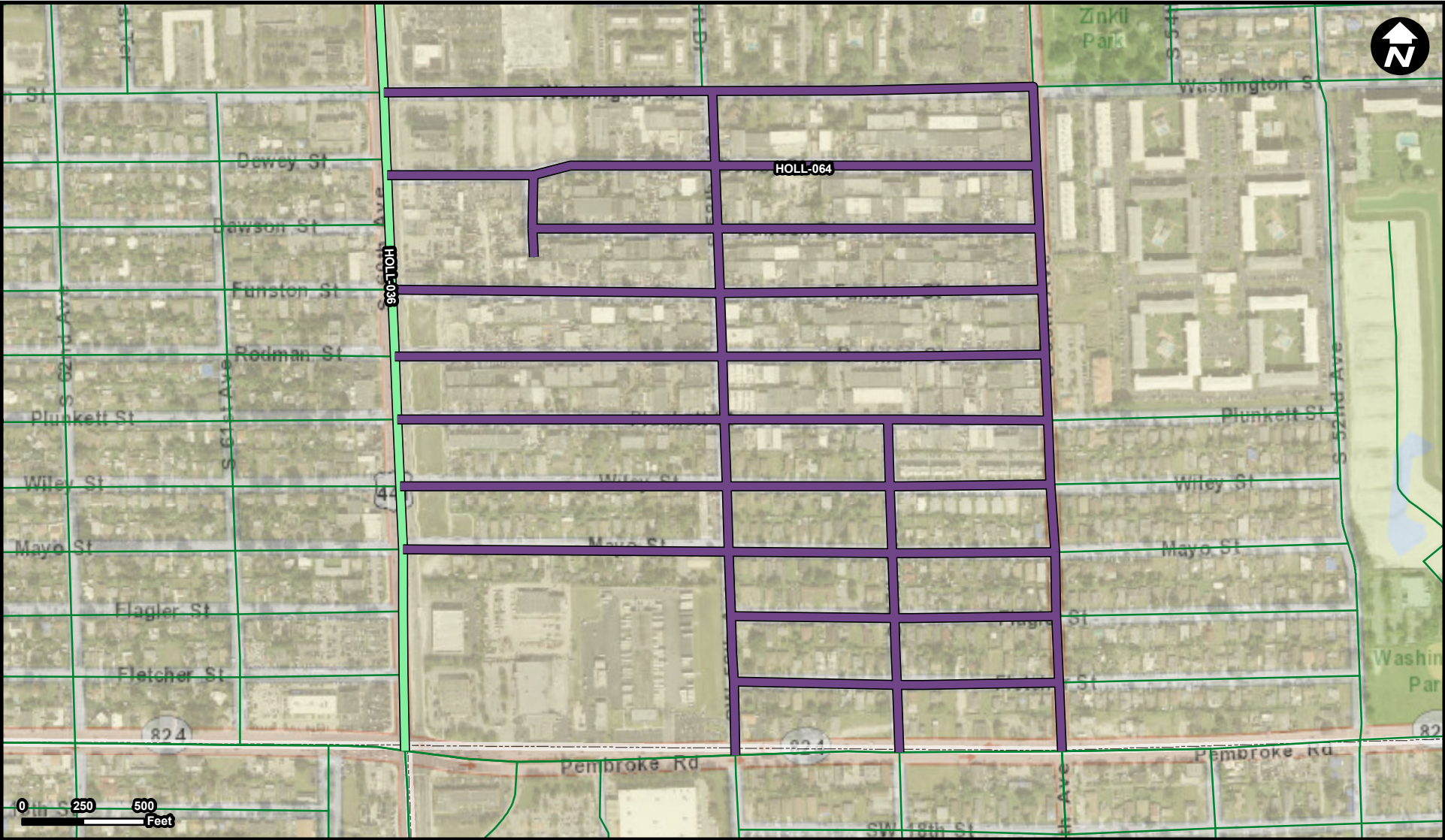
Project Description & Project Scope

Bicycle Pedestrian Infrastructure
Sidewalk
Lighting

Acquisition of right of way along Johnson Street for implementation of Complete Streets design.

Installation of 5' concrete sidewalk and curb along the south side of Johnson street and portions of the north side as well as pedestrian level lighting.

FROM: East of I-95
To: N Dixie Highway



Legend

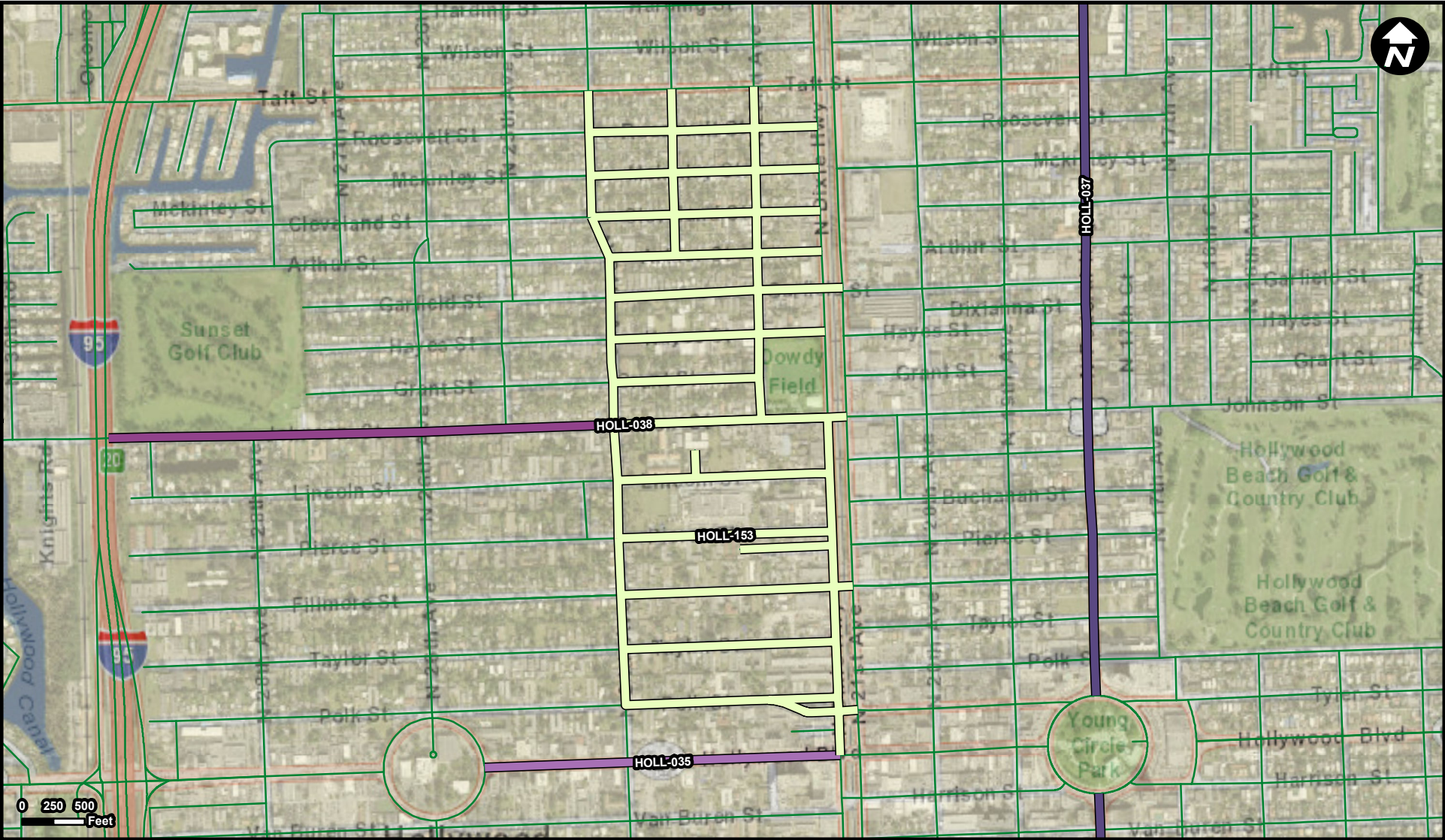
- HOLL-036
- HOLL-064
- Municipality
- Unincorporated

Suggested Work Mix: Capacity Increase, Widening
Primary Work Mix: New Road Construction
Secondary Work Mix: Bike Lane Sidewalk

Project Description & Project Scope Infrastructure improvements and beautification of roadways in commercial and industrial districts and is anticipated to occur in various areas at an approximate cost of \$5,000,000.

Installation of Drainage facilities and Reconstruction of roadways to include on street parking to improve traffic flow.

FROM:
TO:



Legend

- HOLL-035
- HOLL-037
- HOLL-038
- HOLL-153
- Municipality
- Unincorporated

Suggested Work Mix: Resiliency Improvement

Primary Work Mix:

Secondary Work Mix:

Project Description & Project Scope

FROM:

TO:

Construction of projects to improve the resiliency of city infrastructure including drainage projects, bio-swales, septic to sewer conversion. This project is expected to occur citywide at an approximate cost of \$10,000,000 from 2017 through 2026.

Installation of sanitary sewer lines area wide, where none existing.