

Legend

- HALL-001
- HALL-021
- Municipality
- Unincorporated

Suggested Work Mix: Bicycle Pedestrian Infrastructure
Primary Work Mix:
Secondary Work Mix:

Project Description & Project Scope

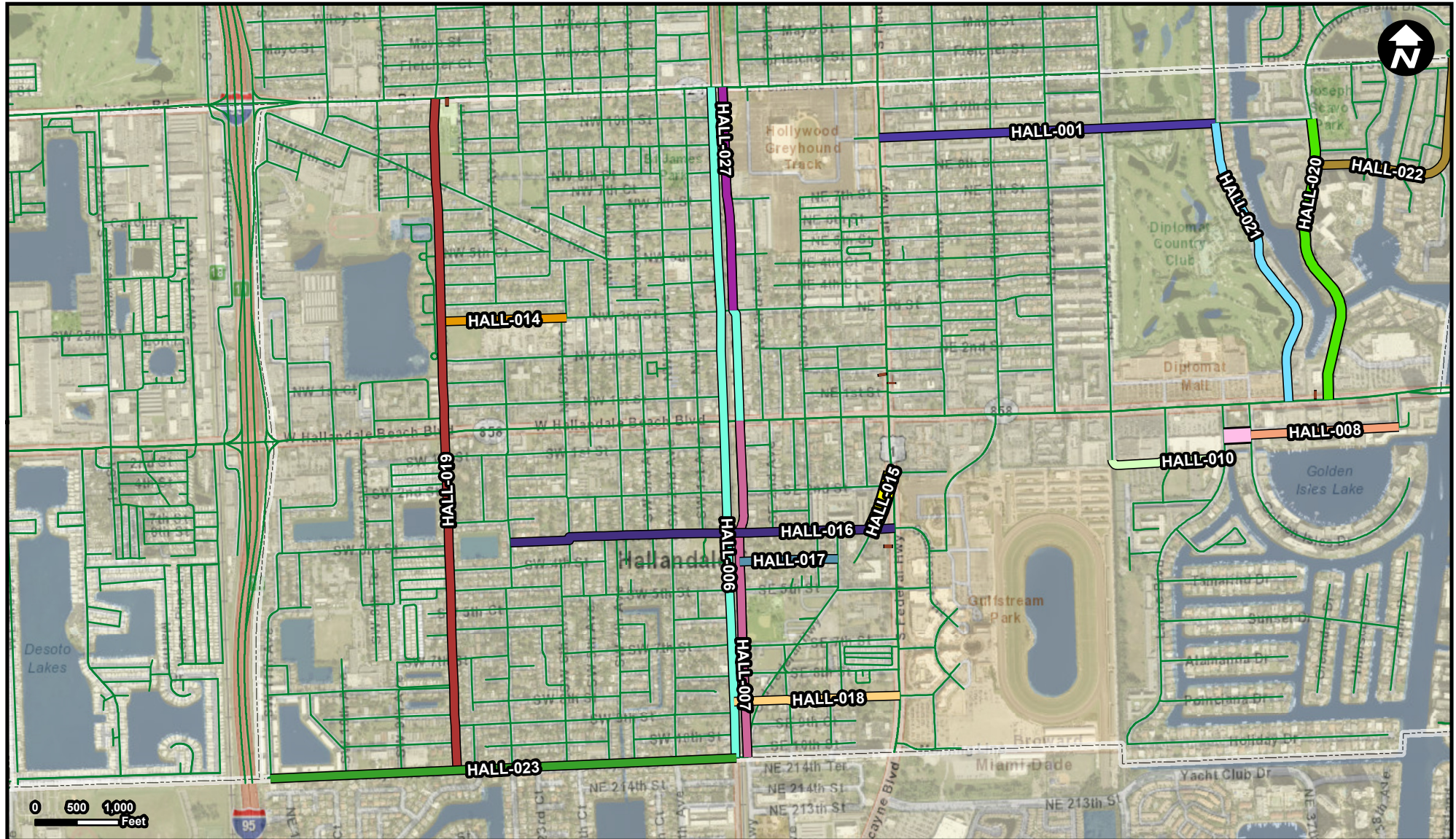
FROM: N Federal Hwy. along Atlantic shores Blvd
To: Diplomat Pkwy

Milling and resurfacing of the road, installing bike lanes, center median, sidewalks and crosswalks, as well as lighting upgrades, landscaping and irrigation improvements.

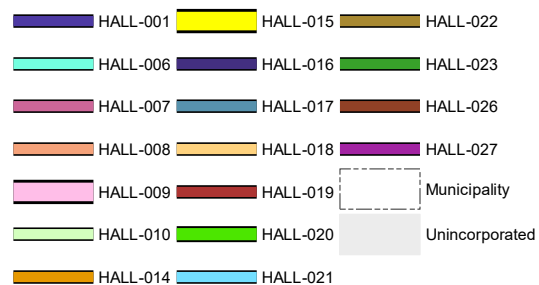
Installing bike lanes, center median, sidewalks and crosswalks, as well as lighting upgrades, landscaping and irrigation improvements.

HALL-006

Project Name
South Old Dixie Highway 2 way Conversion Project



Legend



Suggested Work Mix:
Primary Work Mix:
Secondary Work Mix:

Project Description & Project Scope

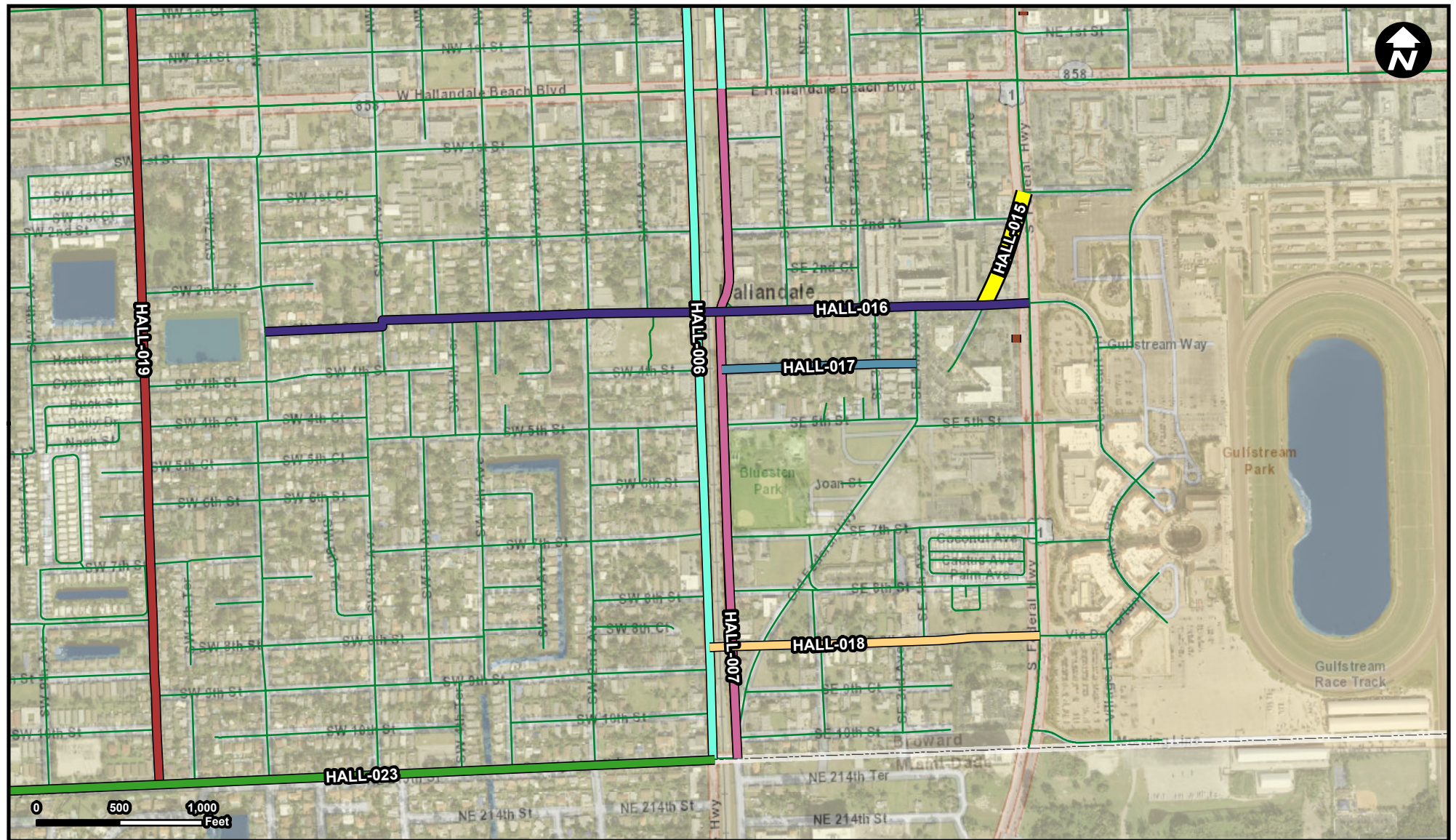
Capacity Increase, Widening Signing/Pavement

Pembroke Road to SW 11th Street. Conversion of Dixie Highway from a 4-lane one-way to a 4 lane two-way road with complete street elemetnts.

Implement a road diet by creating a four lane 2 way road.

FROM: Pembroke Road
To: SW 11th Street

Source: Broward Municipal Surtax Projects - BMPO; ESRI Basemap



Legend

- HALL-006
- HALL-007
- HALL-015
- HALL-016
- HALL-017
- HALL-018
- HALL-019
- HALL-023
- HALL-026
- Municipality
- Unincorporated

Suggested Work Mix:
Primary Work Mix:
Secondary Work Mix:

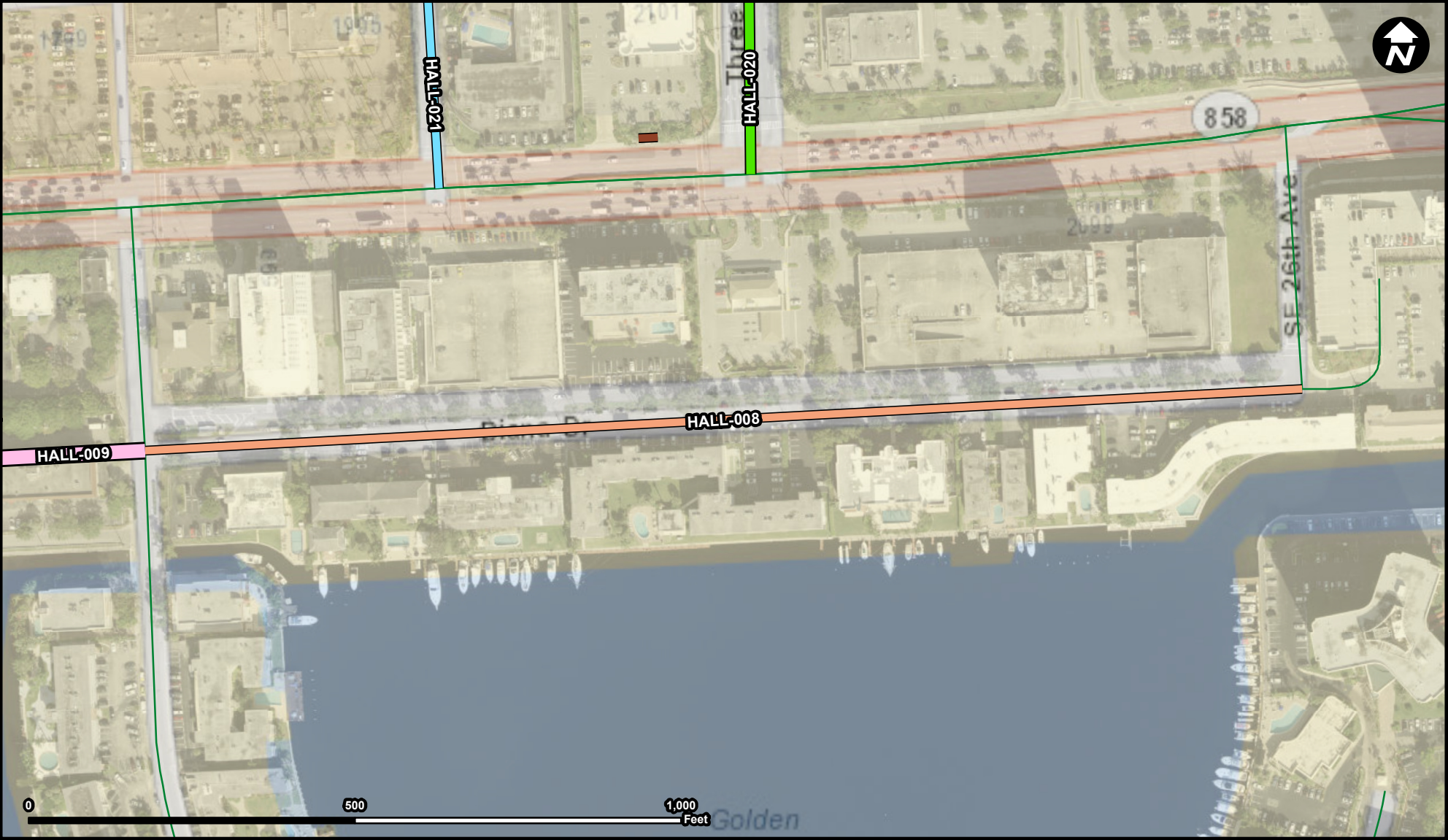
Project Description & Project Scope

Bicycle Pedestrian Infrastructure
Bike Lane Sidewalk Safety Project

FROM: SE 11th Street
To: Hallandale Beach Boulevard

SE 11th Street to Hallandale Beach Boulevard. Reduce the number of travel lanes from 2 to 1. 7' sidewalk, 7' green bike lane. Provide 8' wide on-street parking; a 3' wide landscape buffer adjacent to FEC railroad tracks

Implement a road diet by repurposing a through lane and adding continuous 7 foot sidewalks, 7 foot wide green buffered bike lanes, and



Legend

- HALL-008
- HALL-009
- HALL-020
- HALL-021
- HALL-026
- Municipality
- Unincorporated

Suggested Work Mix:
Primary Work Mix:
Secondary Work Mix:

Bicycle Pedestrian Infrastructure
Parking Facility
Bike Lane Sidewalk

Project Description & Project Scope

Golden Isles Dr. to SE 26th Ave. Provide 6' wide sidewalks in each direction, landscaping, pedestrian scale lighting, bike lanes/sharrows, on-street parallel parking, bulb-outs, curb/gutter drainage, and all upgrades to meet ADA requirements

Sidewalk and street improvements including adding on-street parking, buffered bike lanes, continuous 6-foot wide sidewalks, and ADA



Legend

- HALL-008
- HALL-009
- Municipality
- Unincorporated

Suggested Work Mix:
Primary Work Mix:
Secondary Work Mix:

Project Description & Project Scope

Bicycle Pedestrian Infrastructure
Bike Lane Sidewalk
Lighting

To extend Diana Drive with complete street improvements to Layne Blvd. Provide 6' wide sidewalks in each direction, landscaping, pedestrian scale lighting, bike lanes/sharrows, on-street parallel parking, bulb-outs, curb/gutter drainage

Extending Diana Drive sidewalk and street improvements including adding on-street parking, buffered bike lanes, continuous 6-foot wide

FROM: Golden Isles Dr.
To: Layne Blvd.



Legend

- HALL-009
- HALL-010
- Municipality
- Unincorporated

Suggested Work Mix:
Primary Work Mix:
Secondary Work Mix:

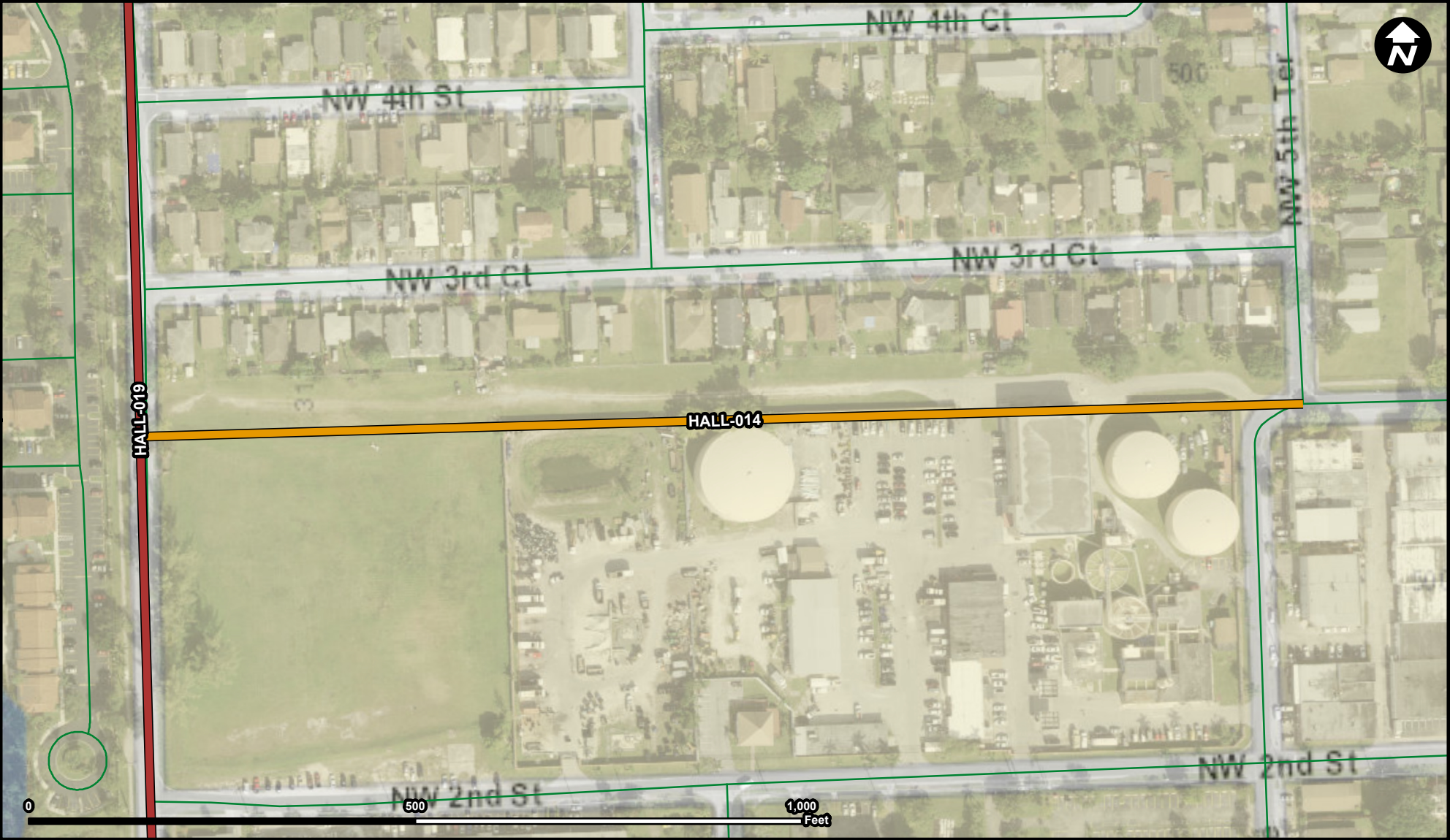
Bicycle Pedestrian Infrastructure
Bike Lane Sidewalk
Lighting

Project Description & Project Scope

Provide 6' wide sidewalks in each direction, landscaping, pedestrian scale lighting, bike lanes/sharrows, on-street parallel parking, bulb-outs, curb/gutter drainage, and all upgrades to meet ADA requirements

Sidewalk and street improvements including adding on-street parking, buffered bike lanes, continuous 6-foot wide sidewalks, and ADA upgrades to curb ramps and detectable warning devices for all crosswalks

FROM: Layne Blvd.
To: NE 14th Ave.



Legend

- HALL-014
- HALL-019
- Municipality
- Unincorporated

Suggested Work Mix:
Primary Work Mix:
Secondary Work Mix:

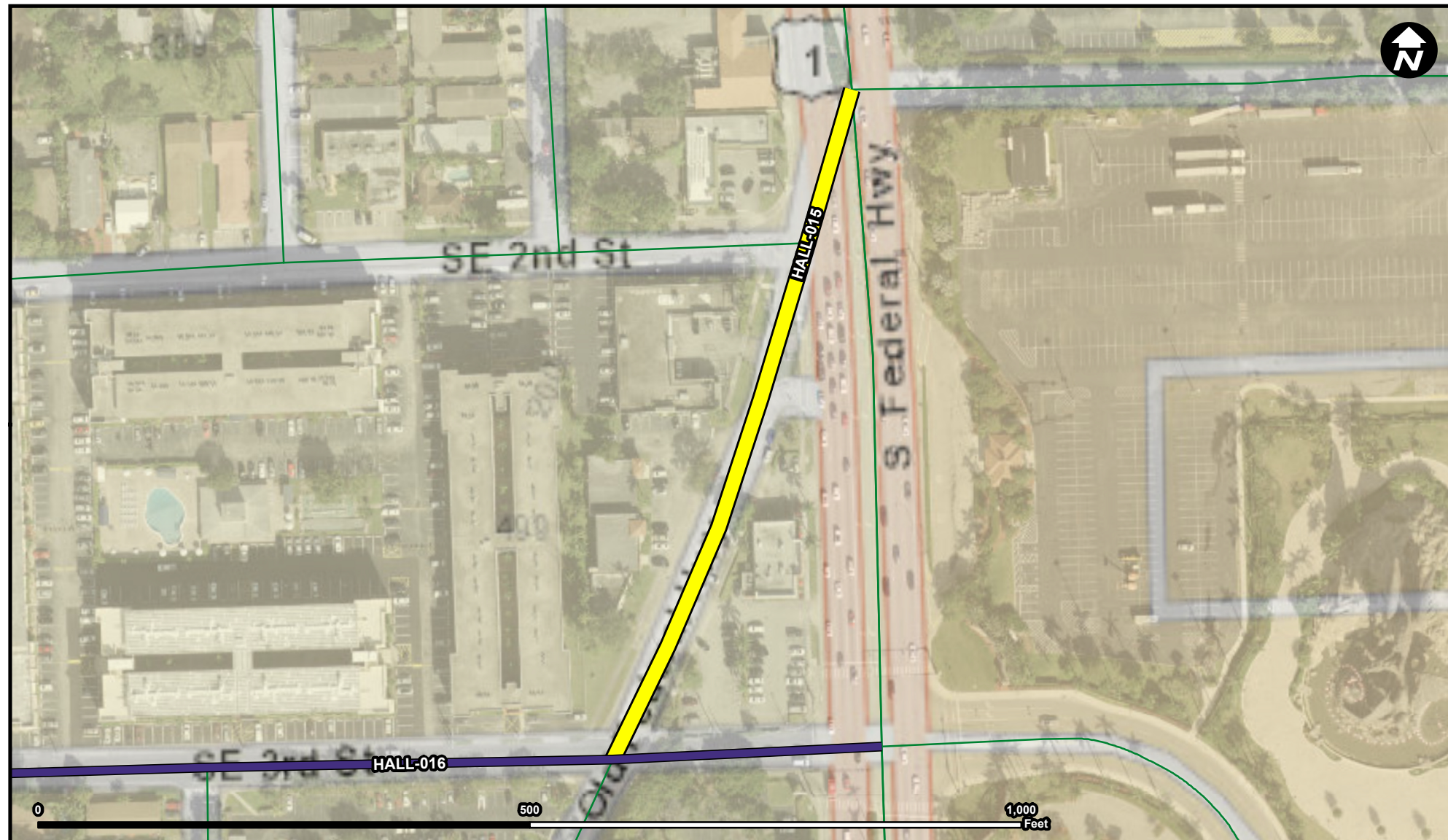
Capacity Increase, Widening
New Road Construction
Sidewalk

Project Description & Project Scope

FROM: NW 8th Avenue
To: NW 5th Terrace

NW 8th Ave to NW 5th Terrace. New 2-lane facility extending NW 3rd Street between NW 5th Terrace and NW 8th Ave

Sidewalk and street improvements are currently in-progress along NE 3rd Street between US-1 and NE 1st Avenue, which will make this a more attractive east-west alternative route. Extending the street to NW 8th Avenue will make it that much more functional



Legend

- HALL-015
- HALL-016
- Municipality
- Unincorporated

Suggested Work Mix:
Primary Work Mix:
Secondary Work Mix:

Capacity Increase, Widening
Signing/Pavement
Bike Lane Sidewalk

Project Description & Project Scope

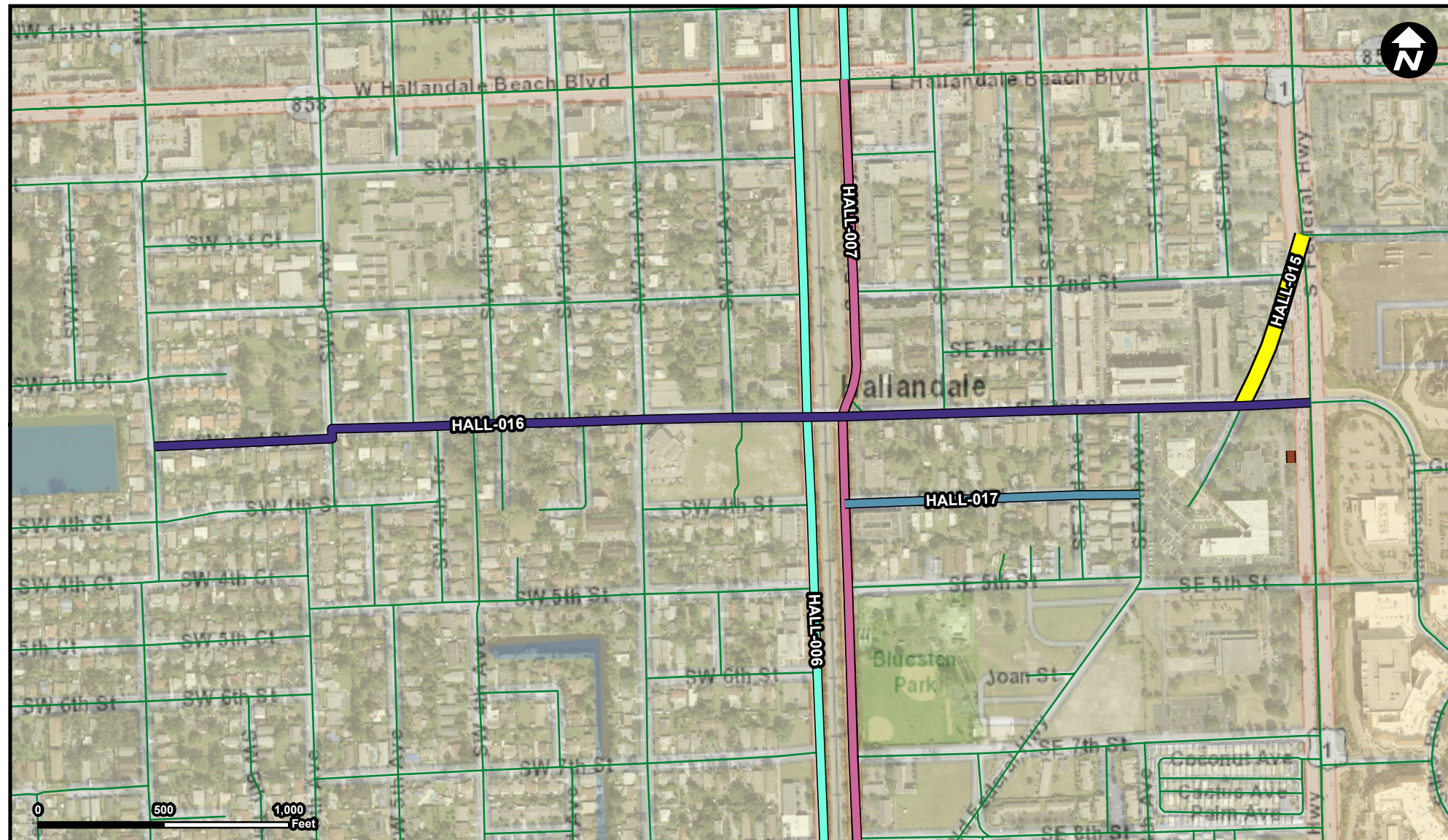
Old Federal Highway to US1. Restripe an eastbound left-turn and through lane and a right turn only lane. Old Federal Highway, complete sidewalk network, provide on-street parking on both sides of the road, install bike lanes

Restripe an eastbound left-turn lane and through lane and right-turn only lane. Adjust traffic signals to reflect this change.

FROM: Old Federal HWY.
To: US-1

HALL-016

Project Name
SE/SW 3rd Street



Legend

- HALL-006
- HALL-007
- HALL-015
- HALL-016
- HALL-017
- HALL-026
- Municipality
- Unincorporated

Suggested Work Mix:
Primary Work Mix:
Secondary Work Mix:

Project Description & Project Scope

Bicycle Pedestrian Infrastructure
Bike Lane Sidewalk
Signing/Pavement

SW 6th Ave to US1. Add 4 wide bike lanes in each direction and 7 wide sidewalks in each direction. ADA upgrades to curb ramps and detectable warning devices for all crosswalks and sidewalks. Pavement resurfacing, rehabilitation, and restriping.

Sidewalk and street improvements including adding on-street parking, buffered bike lanes, continuous 7-foot wide sidewalks, and ADA

FROM: US-1
To: SW 7th Avenue



Legend

- HALL-017
- Municipality
- Unincorporated

Suggested Work Mix: Capacity Increase, Widening
Primary Work Mix: New Road Construction
Secondary Work Mix: Sidewalk

Project Description & Project Scope

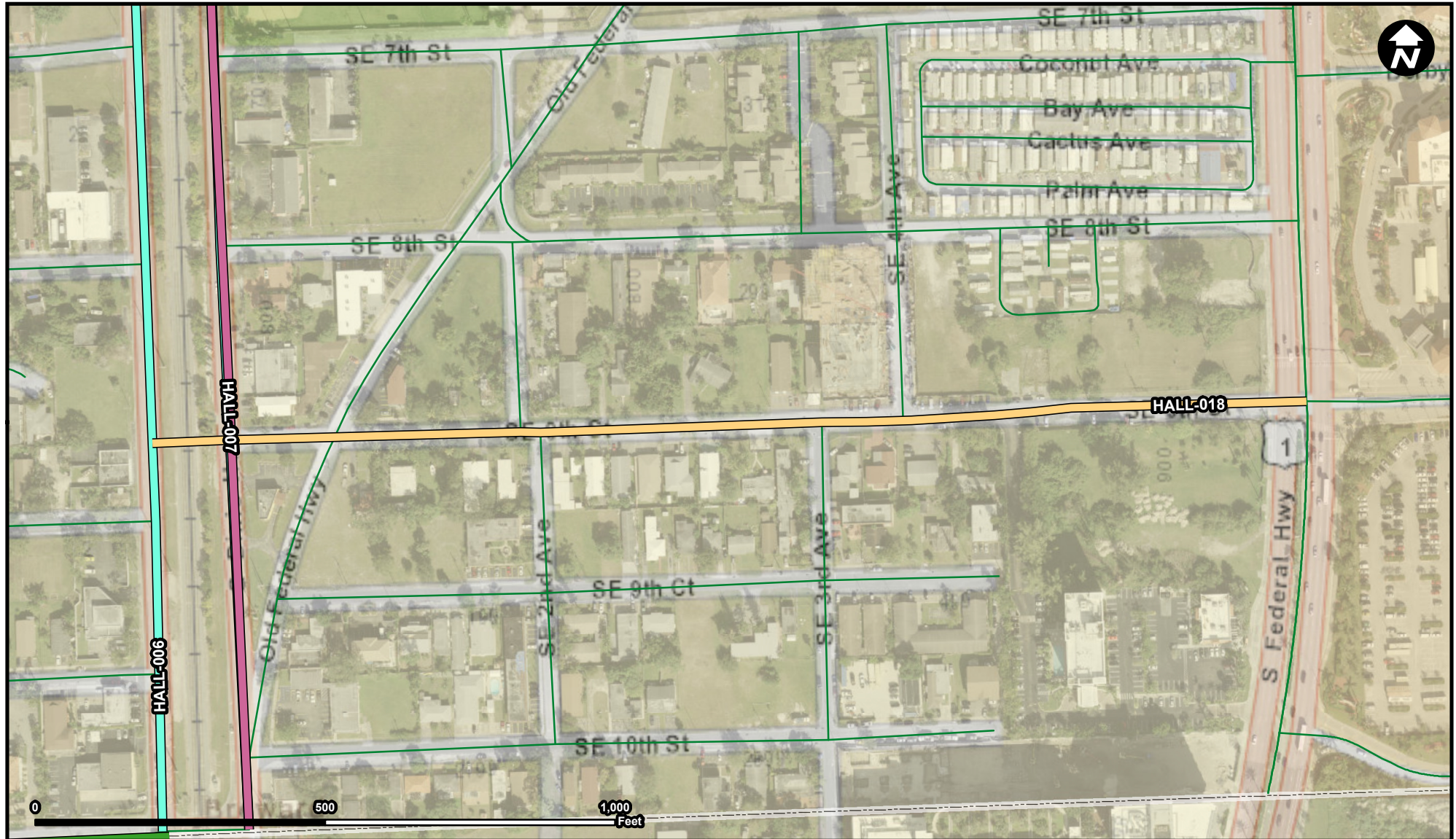
SE 1st Ave to SW 4th Ave. Provide a new 2-lane facility extension of SE 4th Street between SE 3rd Ave and SE 4th Ave. Add 5ft wide sidewalks to each lane.

Create a consistent connection between SE 4th Avenue and SE 1st Avenue along SE 4th Street.







FROM: SE 3rd Ave.
To: SW 4th Ave.

HALL-018

Project Name
SE 9th Street FEC Rail Crossing Realignment



Legend

-  HALL-006
 HALL-007
 HALL-018
 HALL-023
 Municipality
 Unincorporated

Suggested Work Mix:
Primary Work Mix:
Secondary Work Mix:

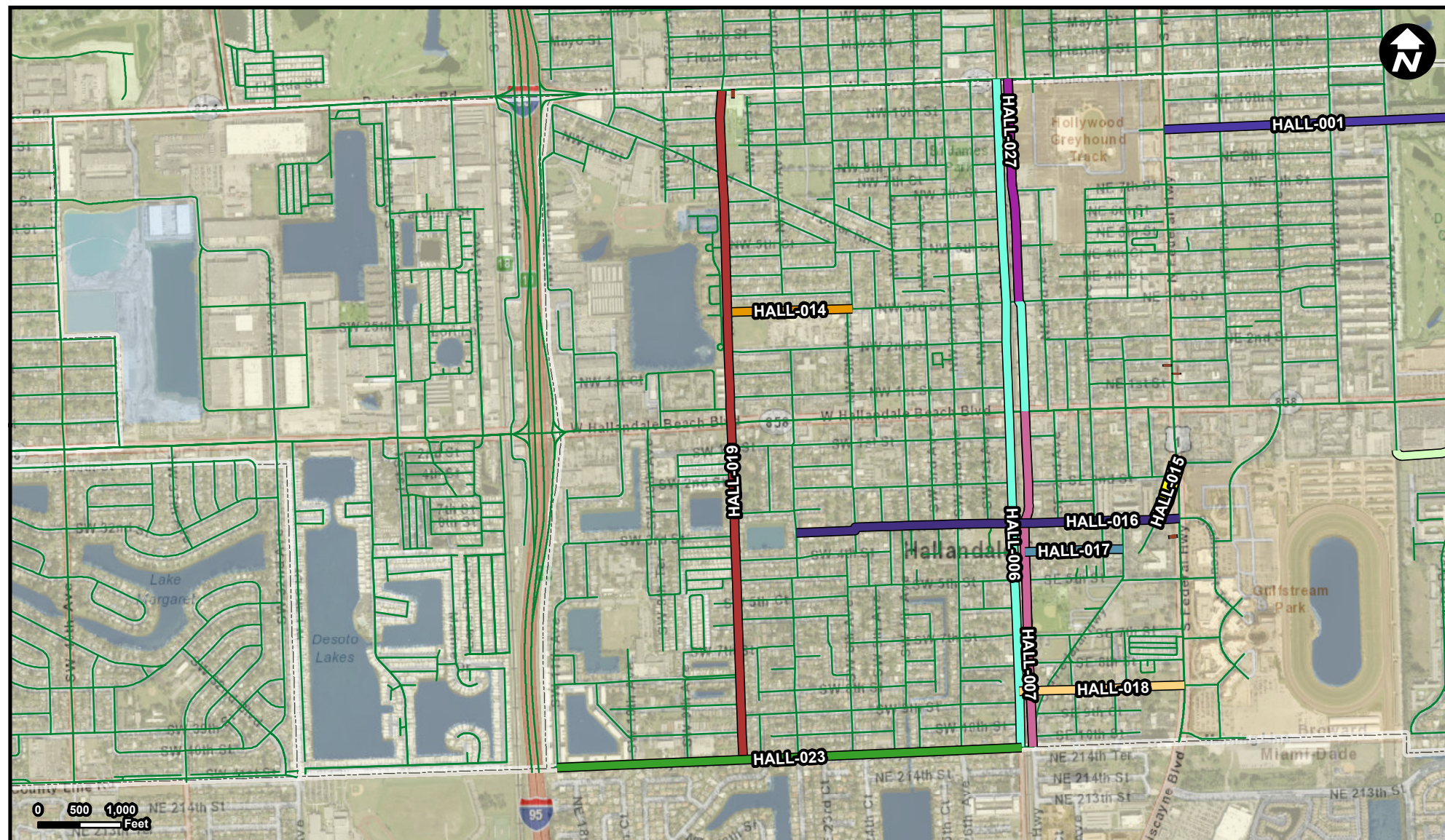
Project Description & Project Scope

Traffic Circles, Speed Tables, Intersection Improvements
Railroad Crossing
Safety Project

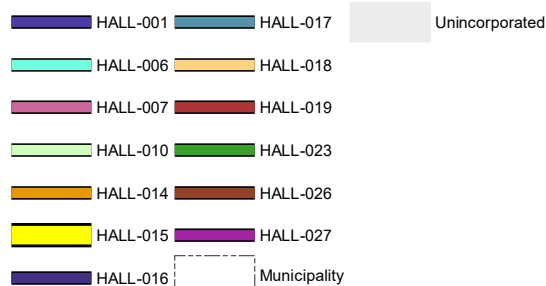
Old Dixie Highway to US1. Construction of new crossing at SE/SW 9th Street across the FEC rail tracks.

FEC Railway crossing at SE 9th Street and realigning SE 9th Street on the east side of the FEC Railway (requires ROW acquisition) creates a continuous route between the entrance to Gulfstream Park and SW 8th Avenue.

Source: Broward Municipal Surtax Projects - BMPO; ESRI Basemap



Legend



Suggested Work Mix:
Primary Work Mix:
Secondary Work Mix:

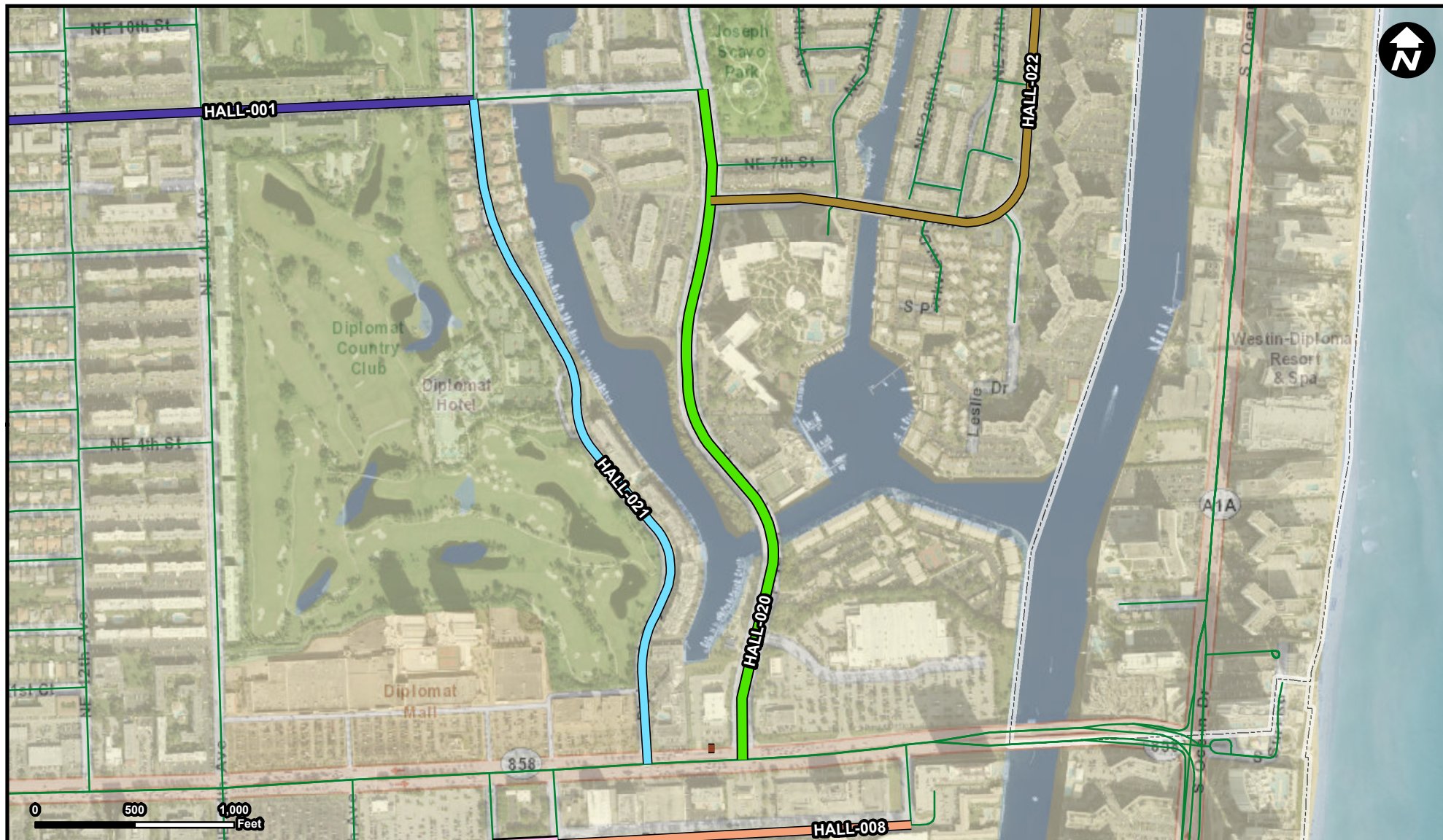
Project Description & Project Scope

Bicycle Pedestrian Infrastructure
Bike Lane Sidewalk
Safety Project

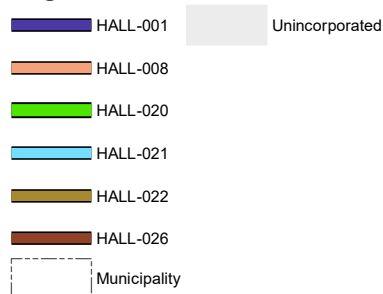
County Line Road to Pembroke Road. Add 4 wide bike lanes in each direction and 7 wide sidewalks in each direction. Mill and resurface existing road, and provide all upgrades to meet ADA requirements.

Sidewalk and street improvements including adding on-street parking, buffered bike lanes, continuous 7-foot wide sidewalks, 4 wide bike lanes, and ADA upgrades to curb ramps and detectable warning devices for all

FROM: SW 11th Street
To: Pembroke Road



Legend



Suggested Work Mix:
Primary Work Mix:
Secondary Work Mix:

Project Description & Project Scope

Bicycle Pedestrian Infrastructure
Bike Lane Sidewalk
Safety Project

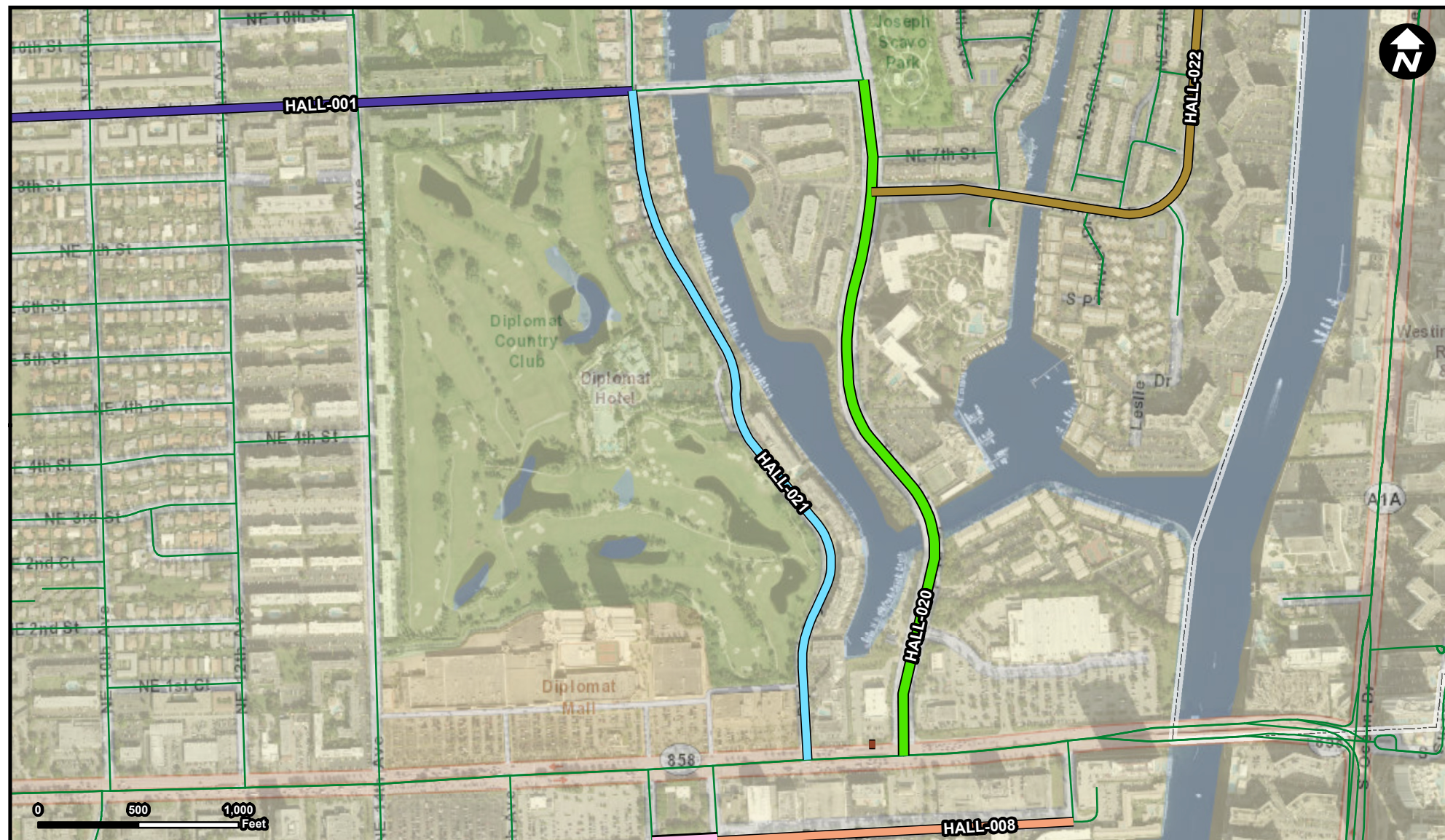
Atlantic Shores Boulevard to Hallandale Beach Boulevard. Add 4 wide bike lanes and 5 wide sidewalks in each direction. Mill and resurface existing road, and provide all upgrades to meet ADA requirements.

Add 4 foot wide bike lanes and 5 foot wide sidewalks in each direction. ADA upgrades to all curb ramps and detectable warning devices for all crosswalks and sidewalks.

FROM: Hallandale Beach Boulevard
To: Atlantic Shores Blvd.

HALL-021

Project Name
Diplomat Parkway



Legend

-
- Legend:
- HALL-001 (Dark Blue)
 - HALL-008 (Orange)
 - HALL-009 (Pink)
 - HALL-020 (Green)
 - HALL-021 (Light Blue)
 - HALL-022 (Brown)
 - HALL-026 (Dark Brown)
- Legend:
- Municipality (White box with dashed border)
 - Unincorporated (Gray box)

Suggested Work Mix:
Primary Work Mix:
Secondary Work Mix:

Project Description & Project Scope

Bicycle Pedestrian Infrastructure

Bike Lane Sidewalk

Atlantic Shores Boulevard to Hallandale Beach Boulevard. Add 4 wide bike lanes and 5 wide sidewalks in each direction. Mill and resurface existing road, install additional pedestrian crosswalks, and provide all upgrades to meet ADA requirements

Add 4 foot wide bike lanes and 5 foot wide sidewalks in each direction.
ADA upgrades to all curb ramps and detectible warning devices for all

FROM: Hallandale Beach Blvd.
To: Atlantic Shore Blvd.



Legend

- HALL-020
- HALL-022
- Municipality
- Unincorporated

Suggested Work Mix:
Primary Work Mix:
Secondary Work Mix:

Bicycle Pedestrian Infrastructure
Bike Lane Sidewalk
Safety Project

Project Description & Project Scope

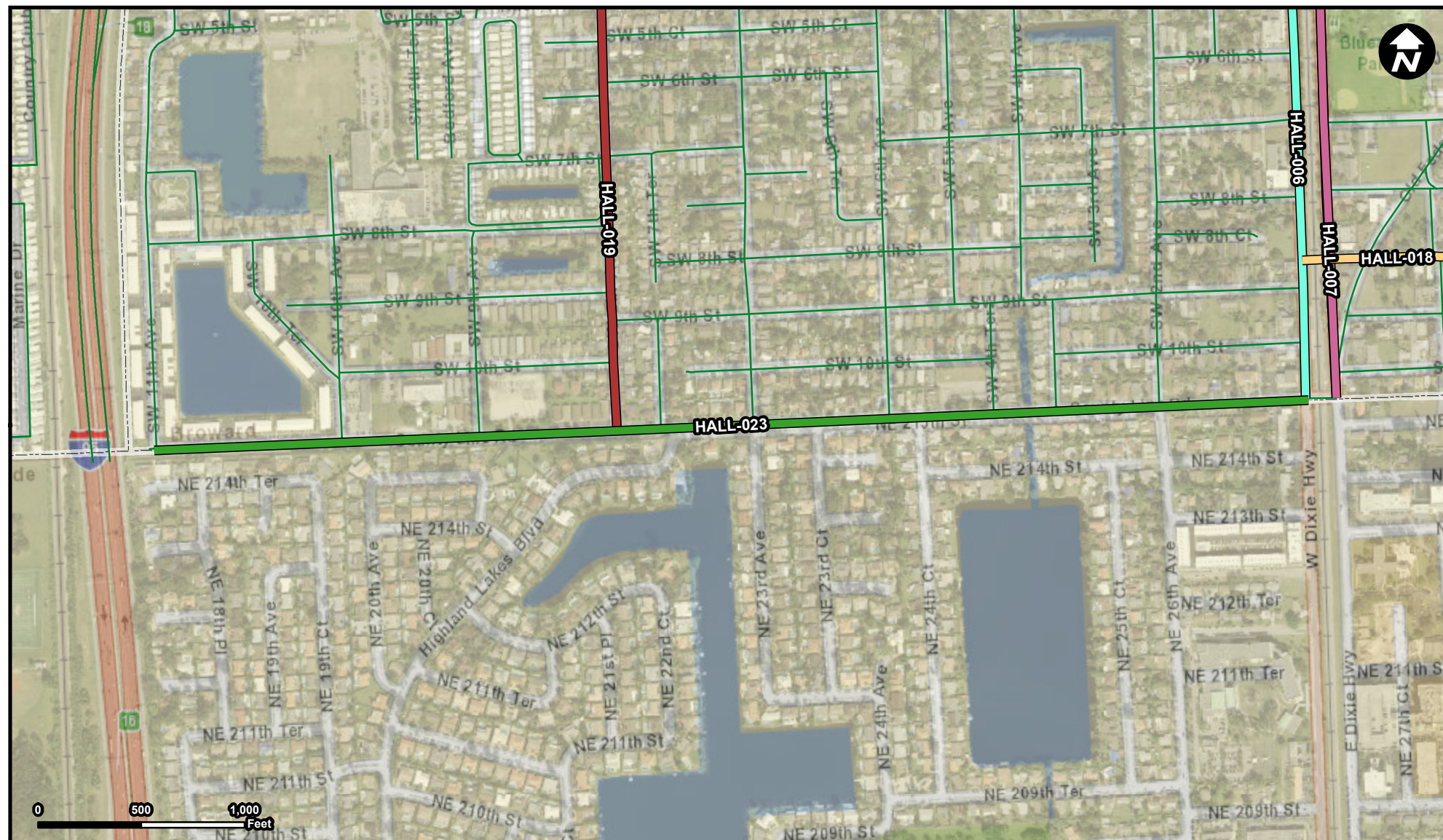
FROM: Three Islands Boulevard
To: NE 11th Street

Three Islands Boulevard to terminus. Add 4 wide bike lanes and 5 wide sidewalks in each direction. Mill and resurface existing road, install additional pedestrian crosswalks, and provide all upgrades to meet ADA requirements.

Implement sharrows in both directions.

HALL-023

Project Name
County Line Road/ SW 11th St



Legend

- HALL-006
- HALL-007
- HALL-018
- HALL-019
- HALL-023
- Municipality
- Unincorporated

Suggested Work Mix:
Primary Work Mix:
Secondary Work Mix:

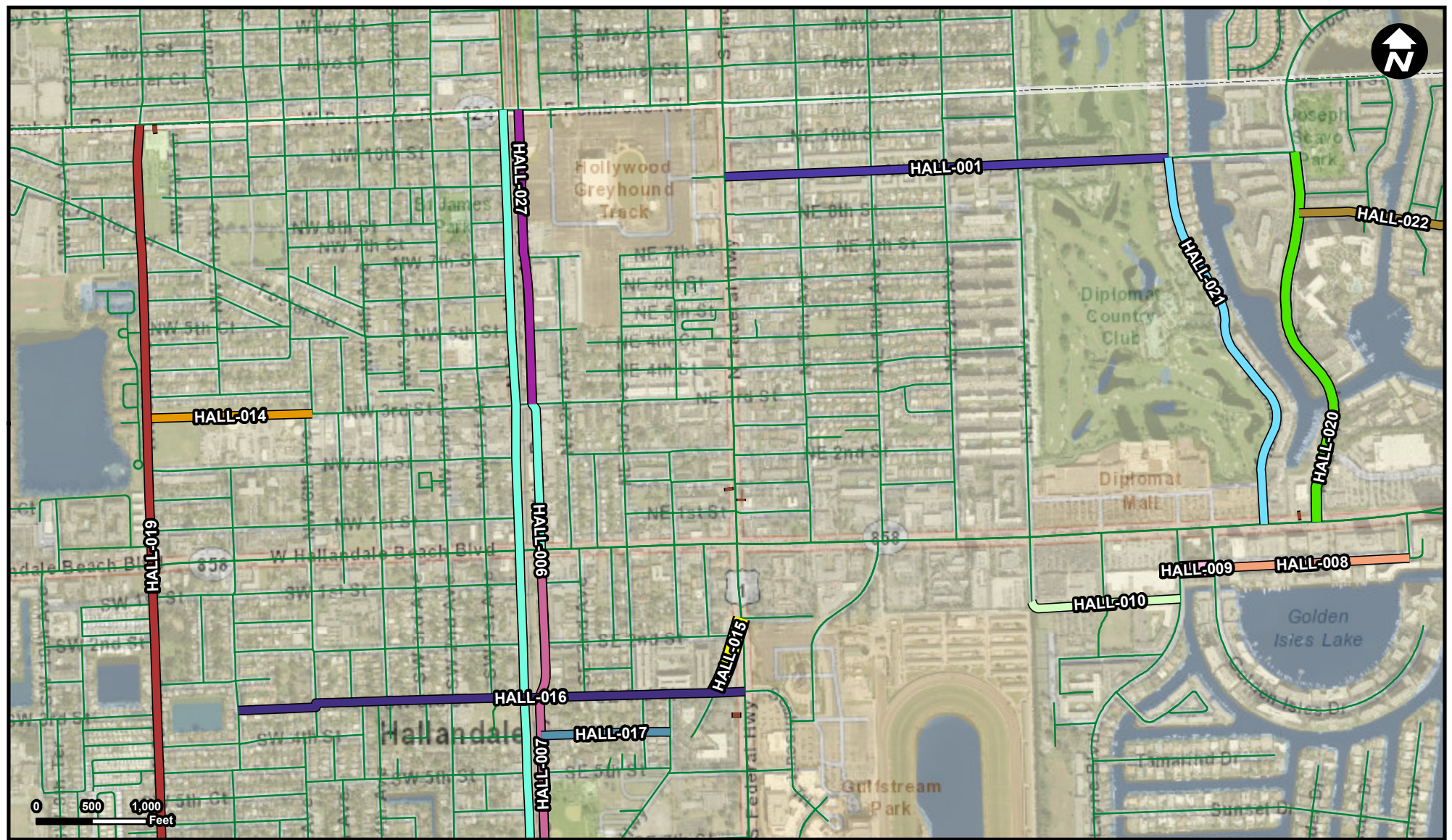
Bicycle Pedestrian Infrastructure
Bike Lane Sidewalk
Safety Project

Project Description & Project Scope

SW 7th Terrace to Dixie Highway. Add 4 wide bike lanes or sharrows in each direction, and provide all upgrades to meet ADA requirements.

Shared-use path from SW 11th avenue to SW 7th Terrace and Dixie Hwy.

FROM: SW 11th Ave.
To: Dixie Hwy



Legend

HALL-001	HALL-015	HALL-026
HALL-006	HALL-016	HALL-027
HALL-007	HALL-017	Municipality
HALL-008	HALL-019	Unincorporated
HALL-009	HALL-020	
HALL-010	HALL-021	
HALL-014	HALL-022	

Suggested Work Mix:
Primary Work Mix:
Secondary Work Mix:

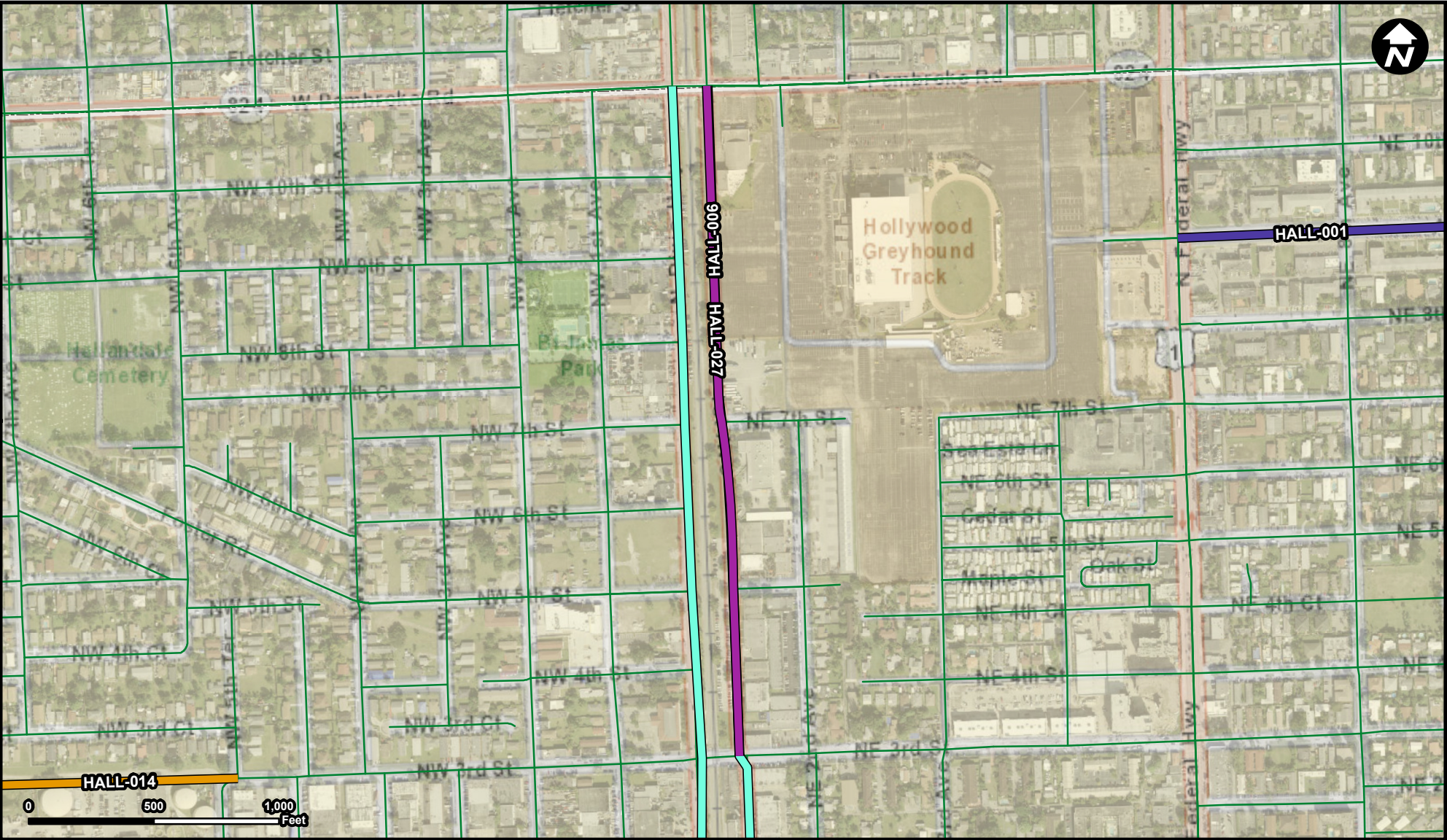
Project Description & Project Scope

Transit Routing
Transit Improvement

Installation of new real time tracking digital signage at transit stops throughout the City

Installing digital bus stop display to show real time information to commuters. The display will be on or next to each bus shelter. The displaying will show vital transit information.

FROM:
To:



Legend

- HALL-001
- HALL-006
- HALL-014
- HALL-027
- Municipality
- Unincorporated

Suggested Work Mix:
Primary Work Mix:
Secondary Work Mix:

Bicycle Pedestrian Infrastructure
Bike Lane Sidewalk
Safety Project

Project Description & Project Scope

NE 3rd Ave to Pembroke Road. Reduce the number of travel lanes from 2 to 1. 7 sidewalk , 7 green bike lane. Provide 8 wide on-street parking; a 3' wide landscape buffer adjacent to FEC railroad tracks

Implement a road diet by repurposing a through lane and adding continuous 7-foot sidewalks, 7-foot-wide green buffered bike lanes, and ADA upgrades to curb ramps and detectible warning devices.

FROM: NE 3rd Street
To: Pembroke Road