

Legend

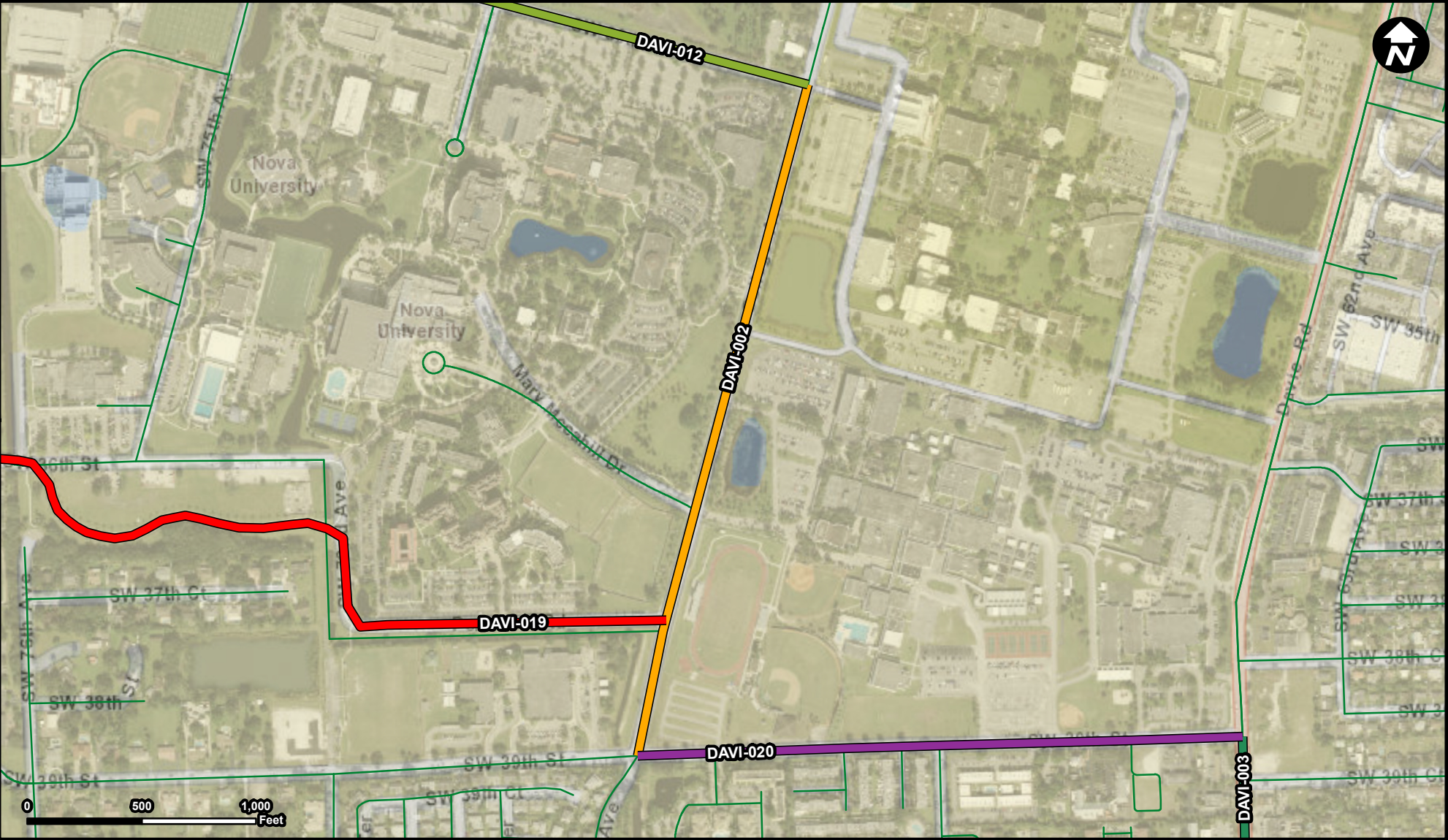
- DAVI-001
- Municipality
- Unincorporated

Suggested Work Mix: Capacity Increase, Widening
Primary Work Mix: Add Lanes
Secondary Work Mix: Sidewalk

Project Description & Project Scope SR84 to Nova Dr

The proposed scope of work includes upgrades to College Avenue from Nova Drive to State Road 84, for approximately 0.5 miles. The existing 3-lane road will be widened to a 4-lane divide road with an 11' raised landscaped median with ADA compliant 5-6' si

FROM: Nova Drive
To: State Road 84



Legend

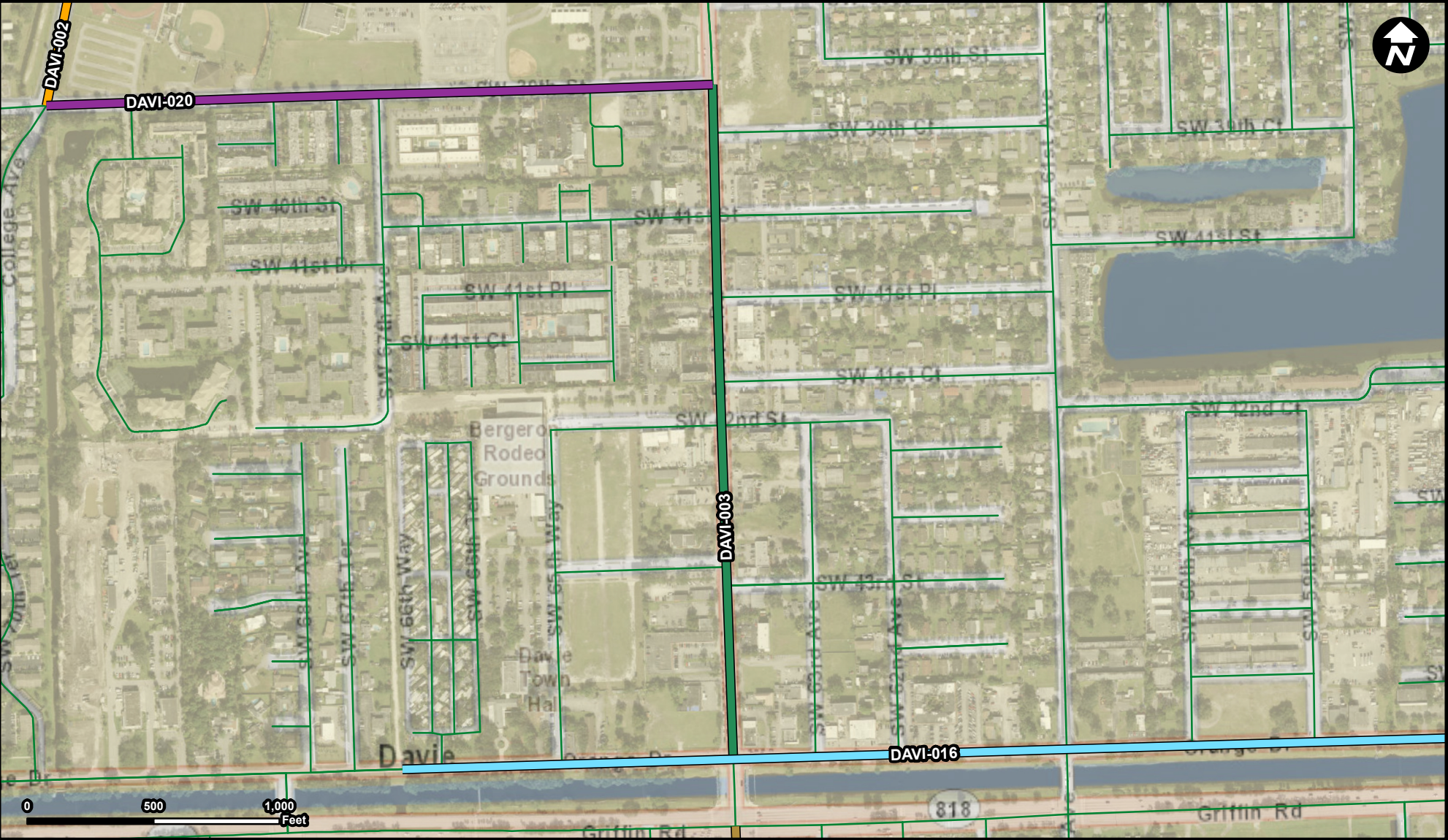
- DAVI-002
- DAVI-003
- DAVI-012
- DAVI-019
- DAVI-020
- Municipality
- Unincorporated

Suggested Work Mix: Capacity Increase, Widening
Primary Work Mix: Add Lanes
Secondary Work Mix: Sidewalk

Project Description & Project Scope SW 30 St to SW 39 St

This project will complete the expansion of the last segment of the College Avenue Corridor between Nova drive and SW39th Street, and similar to the first two phases, proposes road improvements to College Avenue to include an upgrade from a 3-lane road c

FROM: SW 30th Street
To: SW 39th Street



Legend

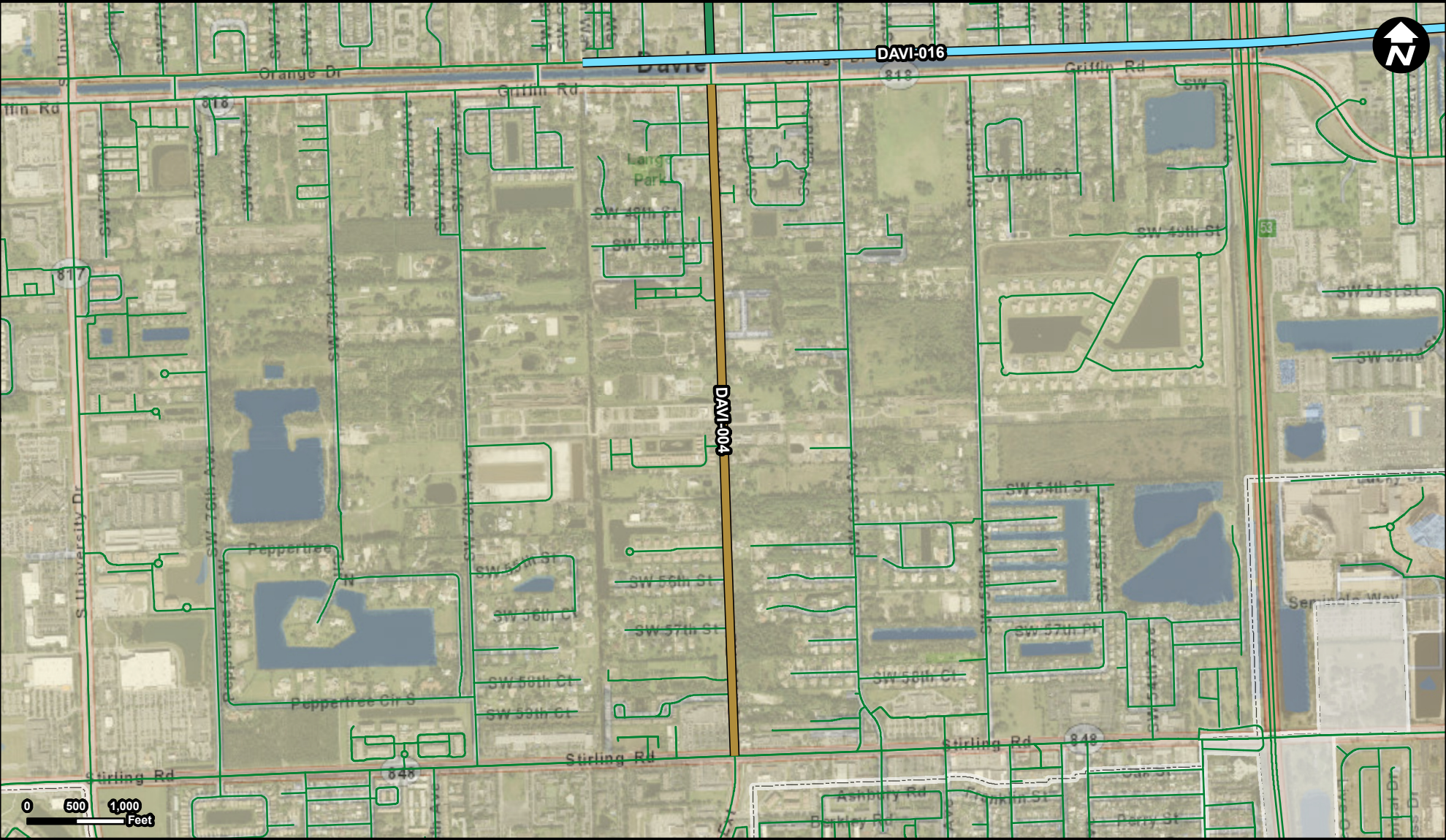
- DAVI-002
- DAVI-003
- DAVI-004
- DAVI-016
- DAVI-020
- Municipality
- Unincorporated

Suggested Work Mix: Capacity Increase, Widening
Primary Work Mix: Add Lanes
Secondary Work Mix:

Project Description & Project Scope SW 39 St to Orange Dr

This third phase of corridor improvements continues to improve the entire Davie Road segment within the Town to include roadway and infrastructure improvements and streetscape enhancements. The improvements include milling and resurfacing the existing r

FROM: SW 39th Street
To: Orange Drive



Legend

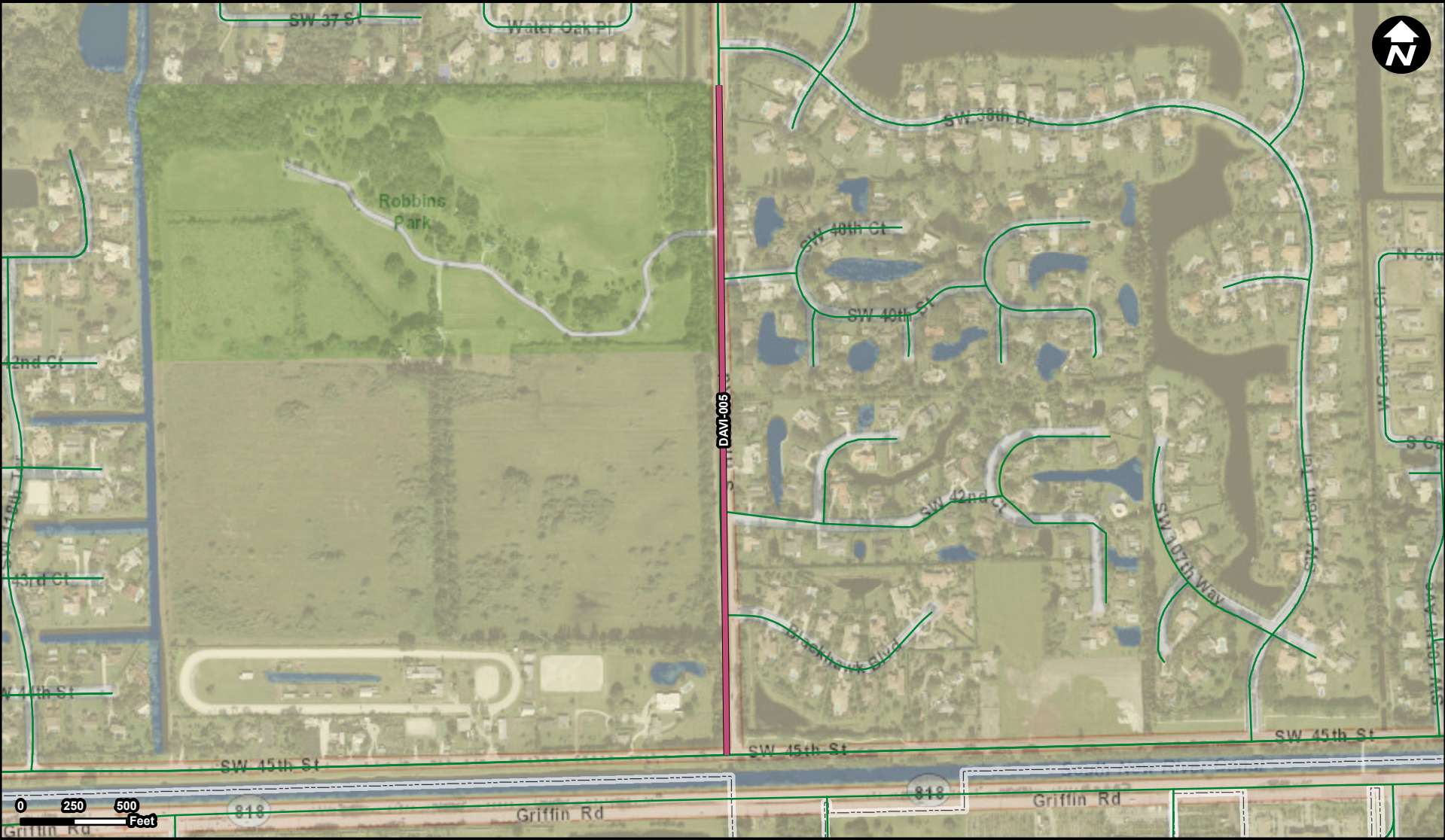
- DAVI-003
- DAVI-004
- DAVI-016
- Municipality
- Unincorporated

Suggested Work Mix: Capacity Increase, Widening
Primary Work Mix: Add Lanes
Secondary Work Mix:

Project Description & Project Scope Griffin Rd to Stirling Rd

The improvements include milling and resurfacing the existing roadway, constructing a landscaped median with irrigation, street light upgrades to LED, black acorn lighting fixtures north of SW 47th Street and pavement markings and signage.

FROM: Griffin Road
To: Stirling Road



Legend

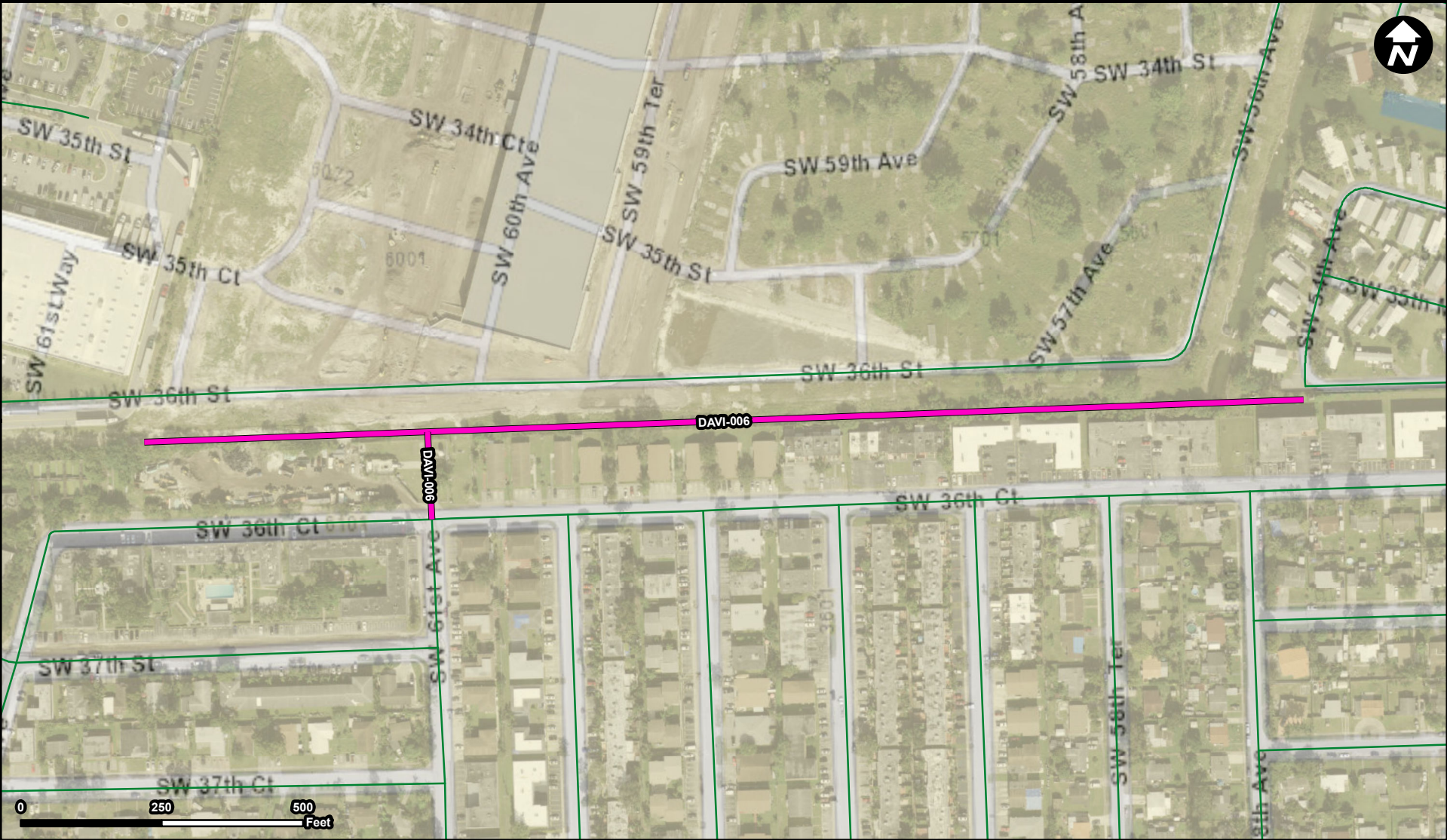
- DAVI-005
- Municipality
- Unincorporated

Suggested Work Mix: Bicycle Pedestrian Infrastructure
Primary Work Mix:
Secondary Work Mix:

Project Description & Project Scope Robbins Park to Orange Dr

Construction of a recreational/pedestrian trail to connect two existing trails in the Town of Davie.

FROM: Robbins Park
TO: Orange Dr



Legend

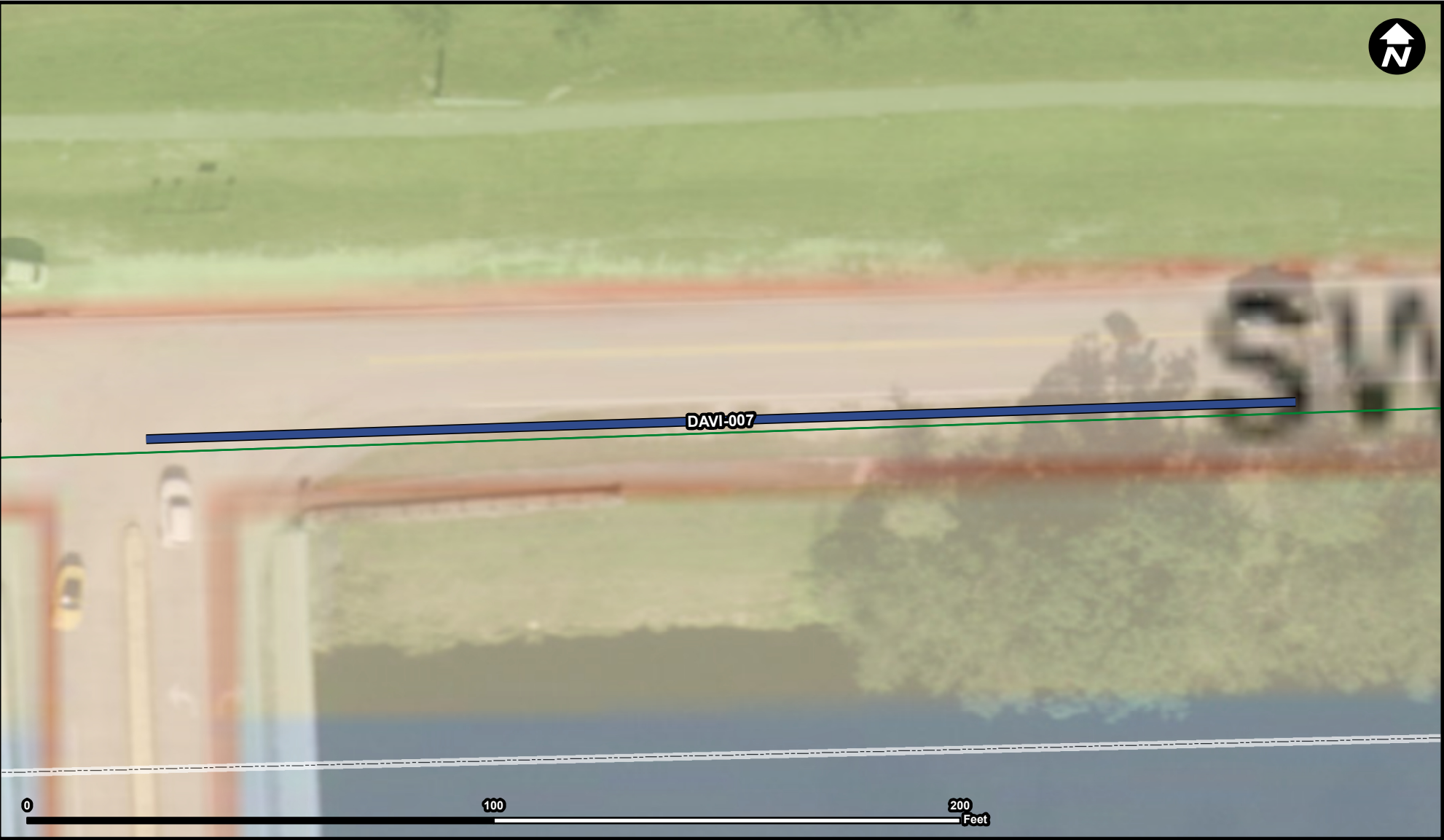
- DAVI-006
- Municipality
- Unincorporated

Suggested Work Mix: Capacity Increase, Widening
Primary Work Mix:
Secondary Work Mix:

FROM: SW 61 Ave
TO: SW 55 Ave

Project Description & Project Scope SW 61 Ave to SW 55 Ave

the construction of Oakes Road consisting of a two-lane road configuration with a designated bike lane adjacent to the westbound lane beginning approximately 1,500' east of Davie Road and extending to the mobile home site at SW 54th Ave



Legend

- DAVI-007
- Municipality
- Unincorporated

Suggested Work Mix: Capacity Increase, Widening

Primary Work Mix: Add Lanes

Secondary Work Mix:

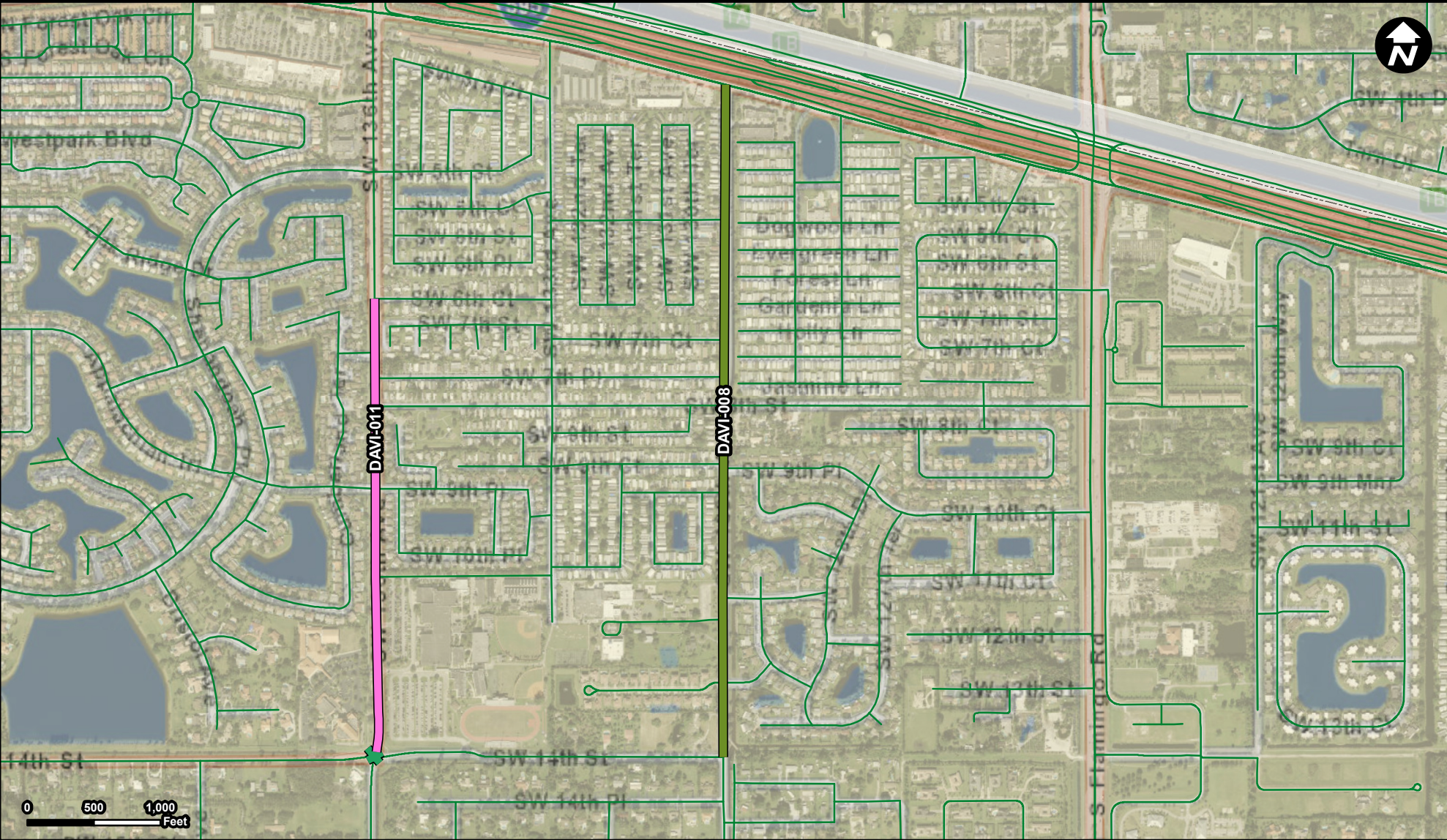
Project Description & Project Scope

Boy Scout Rd to Shotgun Rd

The scope of work includes widening Orange Drive to create a left turn lane (for westbound traffic) onto the 145th Avenue bridge that connects Orange Drive and Griffin Road.

FROM:

To:



Legend

- DAVI-008
- DAVI-009
- DAVI-011
- Municipality
- Unincorporated

Suggested Work Mix: Bicycle Pedestrian Infrastructure
Primary Work Mix:
Secondary Work Mix:

Project Description & Project Scope SR84 to SW 14 St

The project includes safety enhancements to two existing unsignalized pedestrian/equestrian crosswalks located at the intersection of SW 130th Ave and SW 14th Street and just north of SW 11th Place on SW 130th Ave.

FROM: SR 84
To: SW 14th Street



Legend

- DAVI-009
- DAVI-011
- Municipality
- Unincorporated

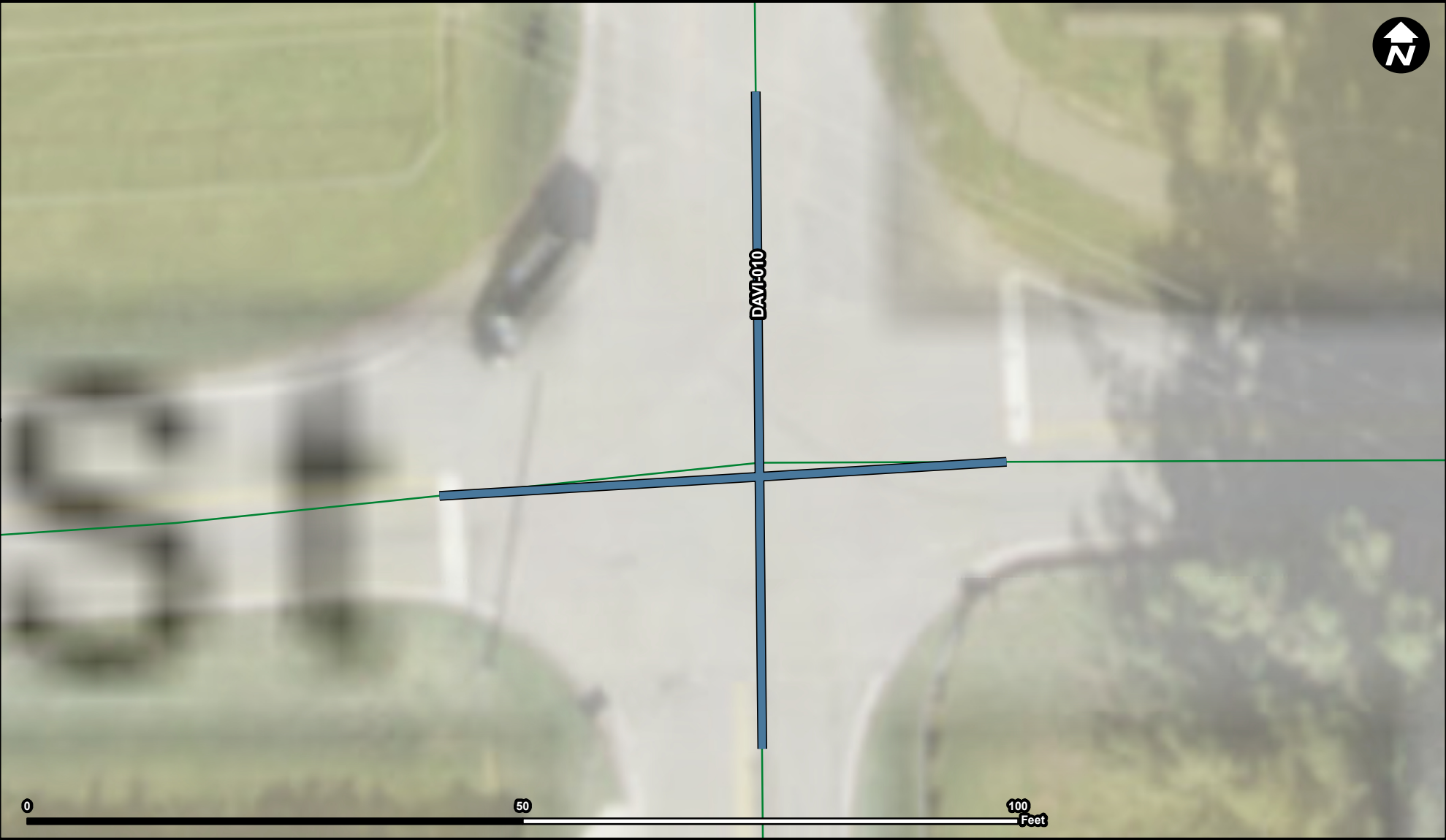
Suggested Work Mix:
Primary Work Mix:
Secondary Work Mix:

FROM: SW 136 Ave
TO: SW 14th St
Traffic Circles, Speed Tables, Intersection Improvements

Project Description & Project Scope

SW 136 Ave and SW 14 St Intersection Improvement

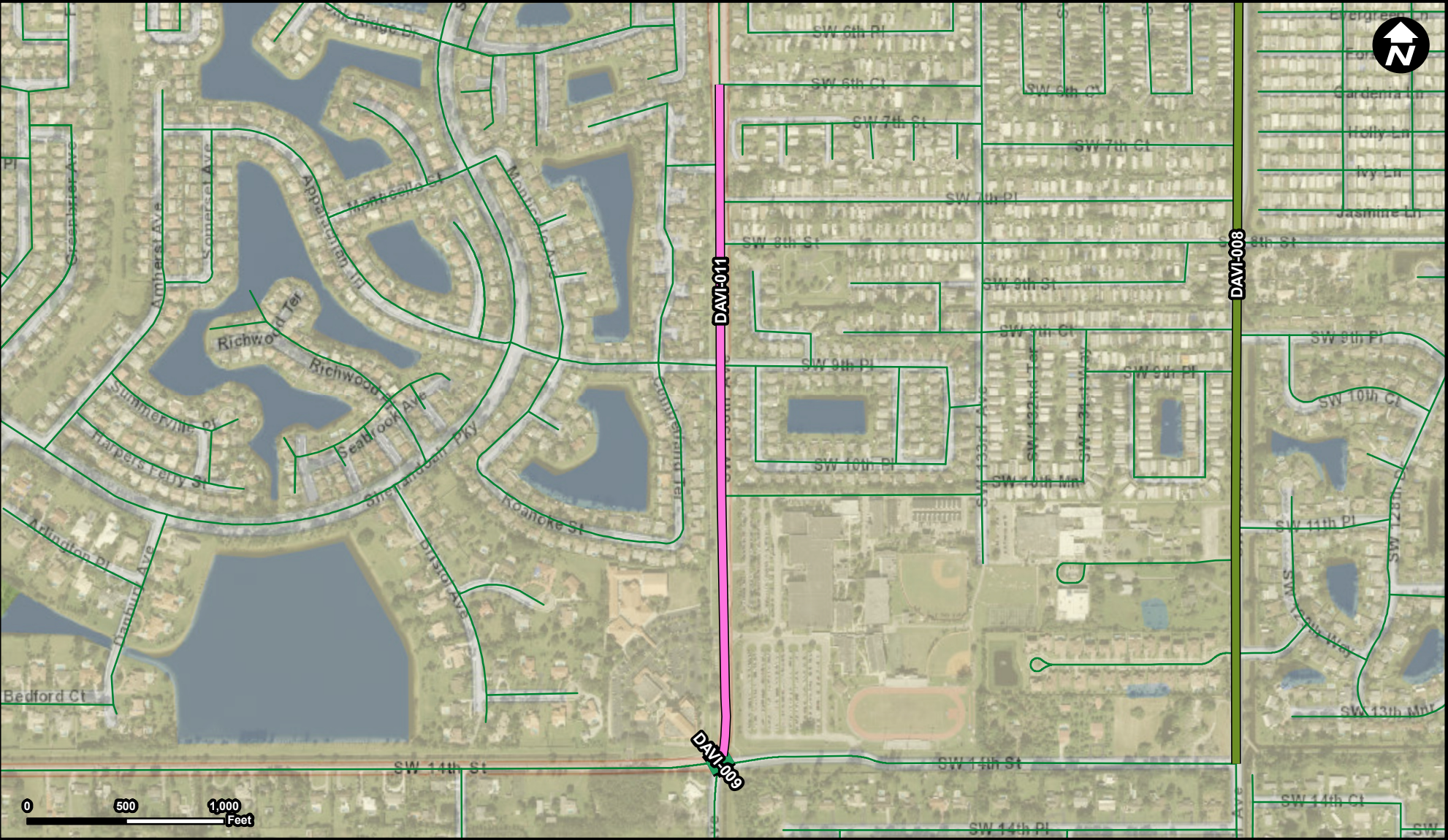
The project would include enhanced lighting, pavement markings signage, road pavement markers, and landscape enhancements to provide for improved safety on the existing roundabout.



Legend

- DAVI-010
- Municipality
- Unincorporated

Suggested Work Mix:	Traffic Circles, Speed Tables, Intersection Improvements	FROM:
Primary Work Mix:	Intersection	To:
Secondary Work Mix:		
Project Description & Project Scope	SW 136 Ave and SW 26 St Intersection Improvement	
	Construct roundabout at this intersection	



Legend

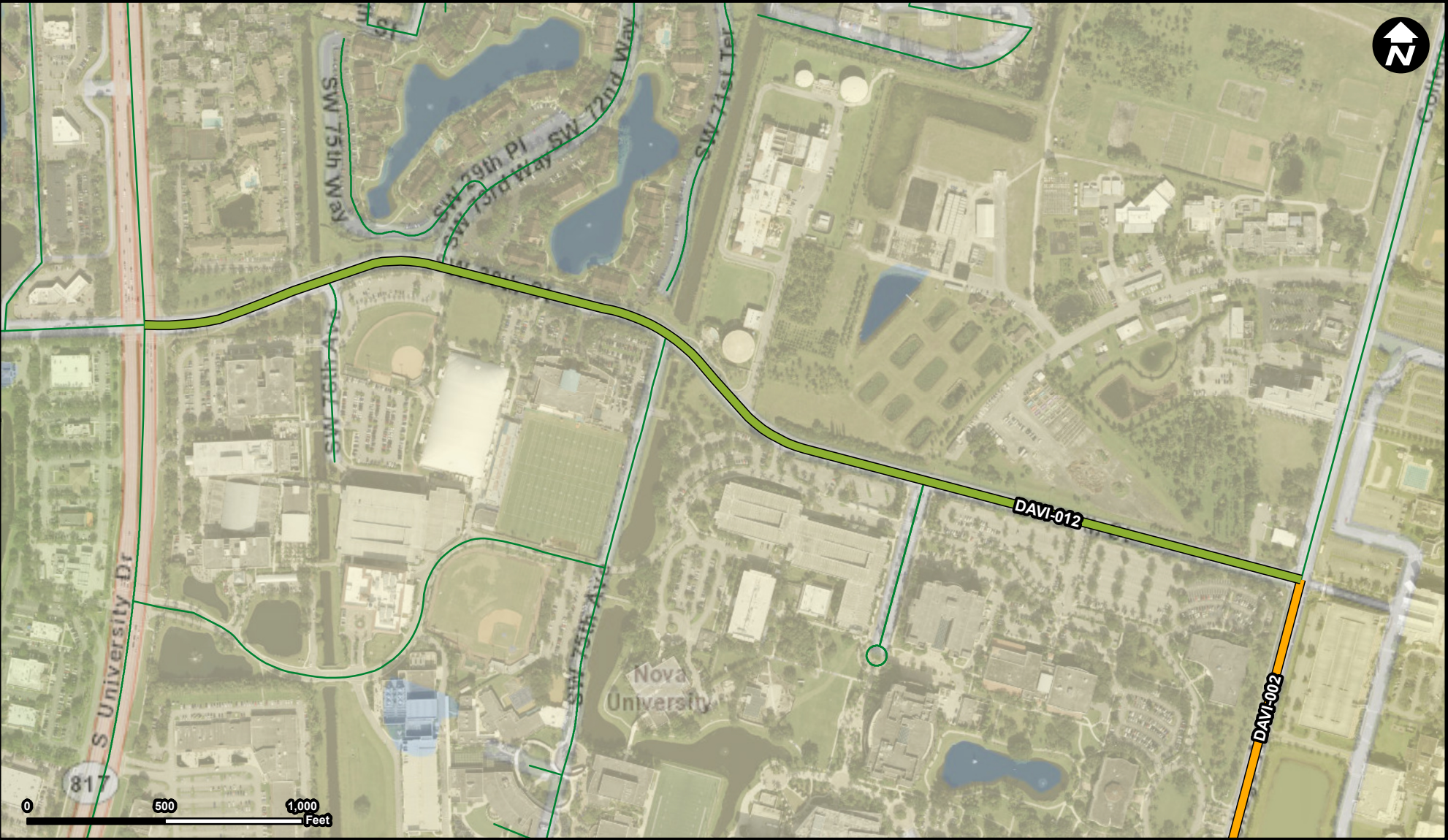
- DAVI-008
- DAVI-009
- DAVI-011
- Municipality
- Unincorporated

Suggested Work Mix: Capacity Increase, Widening
Primary Work Mix: Add Lanes
Secondary Work Mix:

Project Description & Project Scope SW 6 Ct to SW 14 St

upgrading SW 136th Avenue from a two-lane configuration to a 4-lane collector from SW 6th Court to SW 14th Street to be consistent with the existing roadway between SW 6th Court and State Road 84.

FROM: SW 6th Court
To: SW 14th Street



Legend

- DAVI-002
- DAVI-012
- Municipality
- Unincorporated

Suggested Work Mix: Bicycle Pedestrian Infrastructure
Primary Work Mix: Bike Lane Sidewalk
Secondary Work Mix:

Project Description & Project Scope College Ave to University Dr

Widen some segments of SW 30th Street from University Drive to College Avenue to accommodate a combination of sharrow and bike lanes, as well as constructing new sidewalks on both sides of the corridor. Drainage and roadway reconstruction will be needed

FROM: University Drive
To: College Avenue



Legend

- DAVI-013
- Municipality
- Unincorporated

Suggested Work Mix:
Primary Work Mix:
Secondary Work Mix:

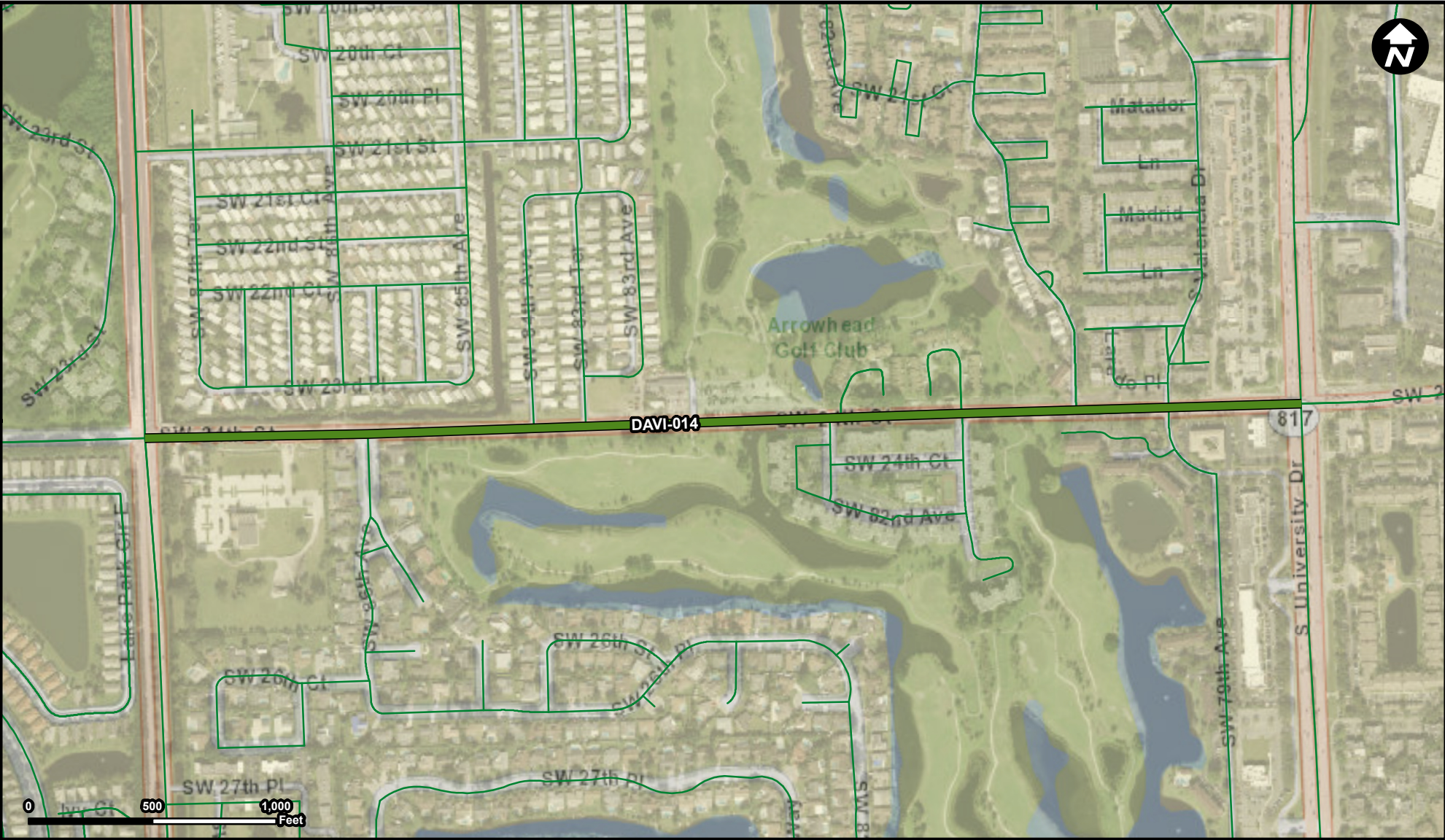
Signal Enhancement
Traffic Signals

FROM:
To:

**Project Description &
Project Scope**

Flamingo Rd / SW 26 St Intersection Improvement

This project involves the installation of a traffic light at the intersection of SW 26th Street and Flamingo Road.



Legend

- DAVI-014
- Municipality
- Unincorporated

Suggested Work Mix: Capacity Increase, Widening
Primary Work Mix: Add Lanes
Secondary Work Mix: Bike Lane Sidewalk

Project Description & Project Scope University Dr to Pine Island Rd

The proposed scope includes the construction of a 3-lane divided roadway with raised medians, left turn lanes, an ADA compliant sidewalk, drainage infrastructure, bicycle lanes and enhanced lighting.

FROM: Pine Island Road
To: University Drive



Legend

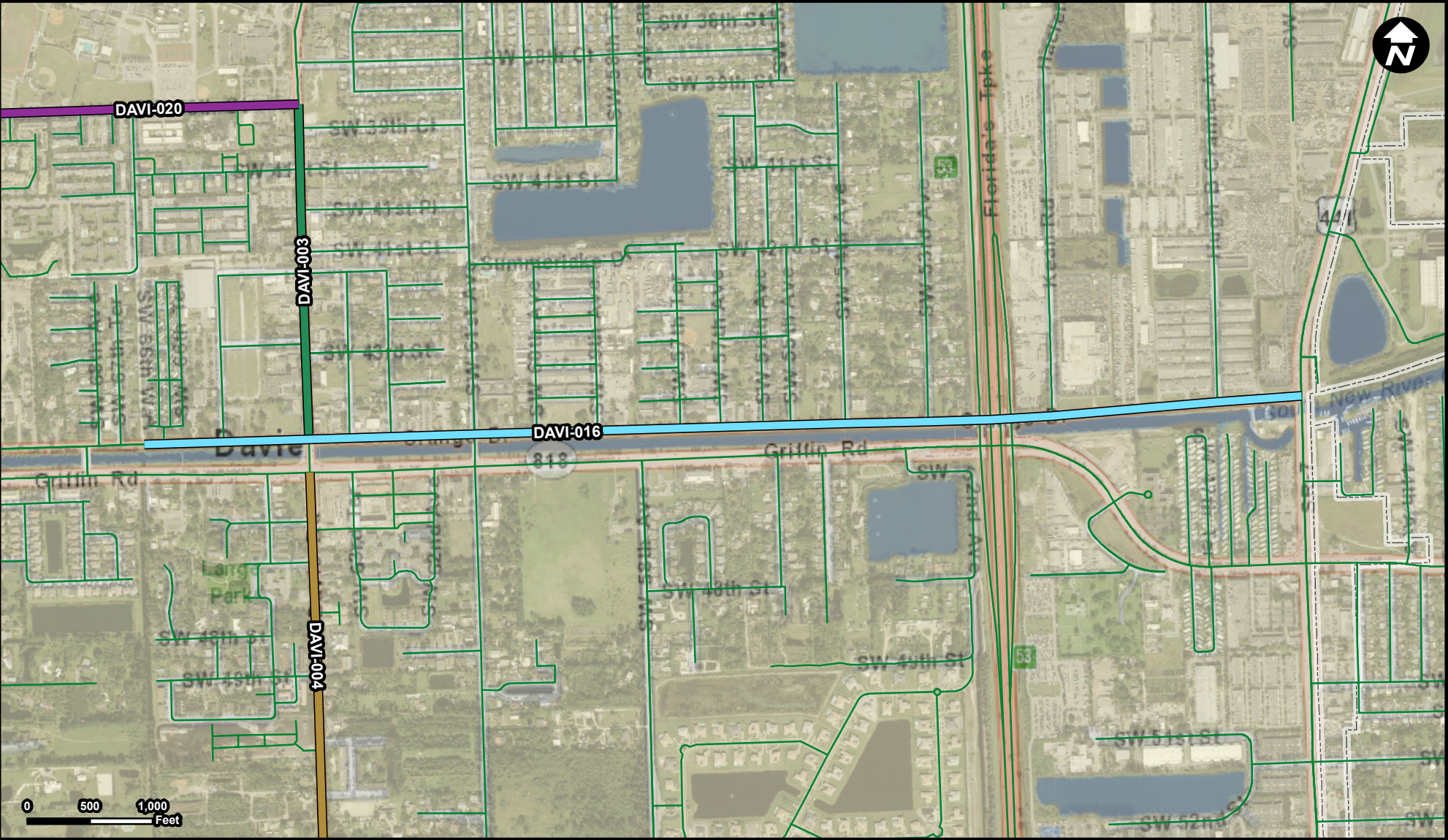
- DAVI-015
- Municipality
- Unincorporated

Suggested Work Mix: Capacity Increase, Widening
Primary Work Mix: Add Lanes
Secondary Work Mix: Sidewalk

Project Description & Project Scope Burris Rd to SR7

The scope is to realign and widen Oakes Road at the intersection with US441 to include two left turn lanes and a dedicated right turn.

FROM: Burris Road
TO: State Road 7



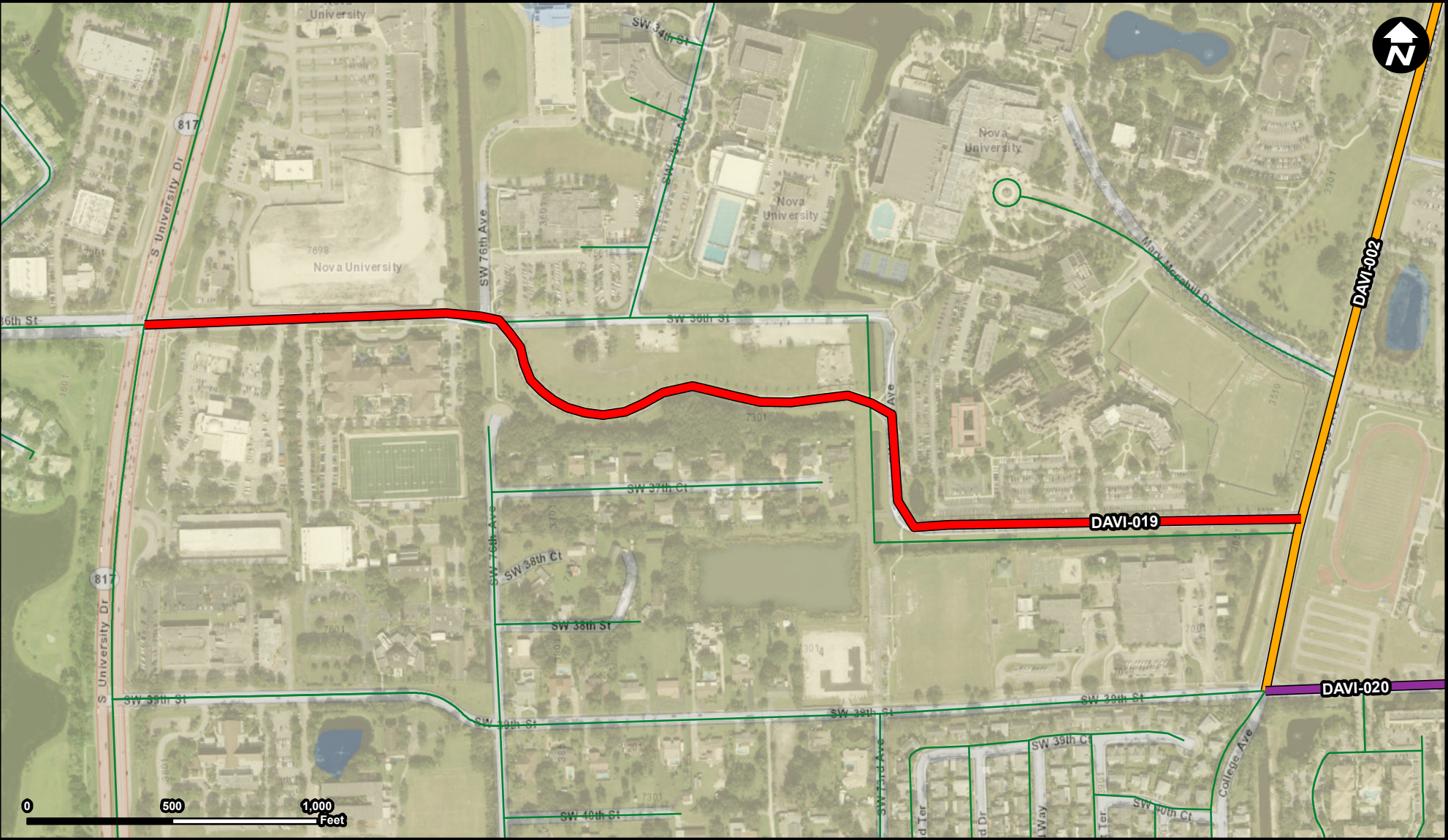
Legend

- DAVI-003
- DAVI-004
- DAVI-016
- DAVI-020
- Municipality
- Unincorporated

Suggested Work Mix: Capacity Increase, Widening
Primary Work Mix: Add Lanes
Secondary Work Mix: Bike Lane Sidewalk

Project Description & Project Scope SR7 to SW 67 Ave
upgrading Orange Drive to a 3-lane major collector with a shoulder from SW 67th to the Florida Turnpike. Bike lanes on the south side of the roadway will not be necessary due to the presence of the linear park.

FROM: SW 67th Avenue
To: State Road 7



Legend

- DAVI-002
- DAVI-019
- DAVI-020
- Municipality
- Unincorporated

Suggested Work Mix: Capacity Increase, Widening
Primary Work Mix: Add Lanes
Secondary Work Mix:

Project Description & Project Scope College Ave to University Dr

This project proposes road improvements to SW 36 Street (from University to College Avenue) to include an upgrade from a 2-lane road configuration to a 4-lane major collector within a 75' C&G road right of way cross section, with shared bike lanes, sidewalk

FROM: University Drive
To: College Avenue



Legend

- DAVI-002
- DAVI-003
- DAVI-019
- DAVI-020
- Municipality
- Unincorporated

Suggested Work Mix: Capacity Increase, Widening
Primary Work Mix: Add Lanes
Secondary Work Mix: Bike Lane Sidewalk

Project Description & Project Scope Davie Rd to University Dr

The project scope involves widening the roadway to add a median/left turn lane along the whole corridor, curb and gutter for drainage, bicycle lanes and a sidewalk along the north side of the roadway. At the intersection of SW 39th Street and Davie Road

FROM: College Avenue
To: Davie Road