

Legend

- COOP-024
- COOP-042
- Municipality
- Unincorporated

Suggested Work Mix:
Primary Work Mix:
Secondary Work Mix:

Resiliency Improvements
Safety Project

Project Description & Project Scope

Storm Water Drainage Improvement

Construct drainage improvement on Stirling Road from Hiatus Road to SW 10 Avenue (Palm Avenue), in association with an overall roadway improvement project.

FROM: Hiatus Road
To: SW 100th Avenue

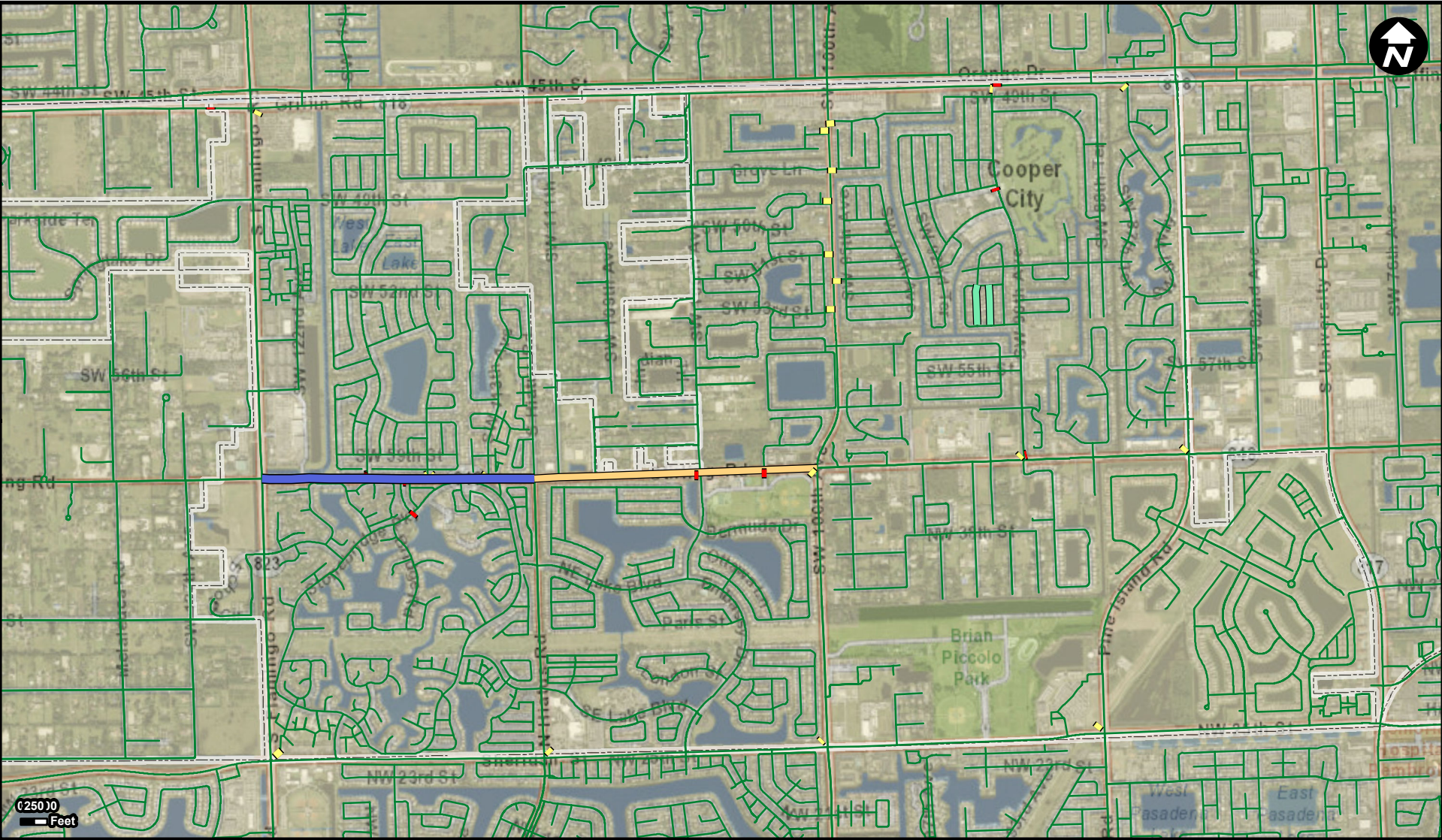


Legend

- COOP-031
- Municipality
- Unincorporated

Suggested Work Mix:	Bicycle Pedestrian Infrastructure
Primary Work Mix:	Sidewalk
Secondary Work Mix:	Parking Facility
Project Description & Project Scope	Construct/install traffic calming and streetscapes in The Apartments.
	Improvements to off-street parking, tree conditions, sidewalks and asphalt in dense, multi-family are of the City.

FROM:
To:



Legend

COOP-024

Unincorporated

COOP-031

COOP-035

COOP-036

COOP-042

Municipality

Suggested Work Mix: Landscaping, Hardscape, Signage, Lighting

Primary Work Mix: Signing/Pavement

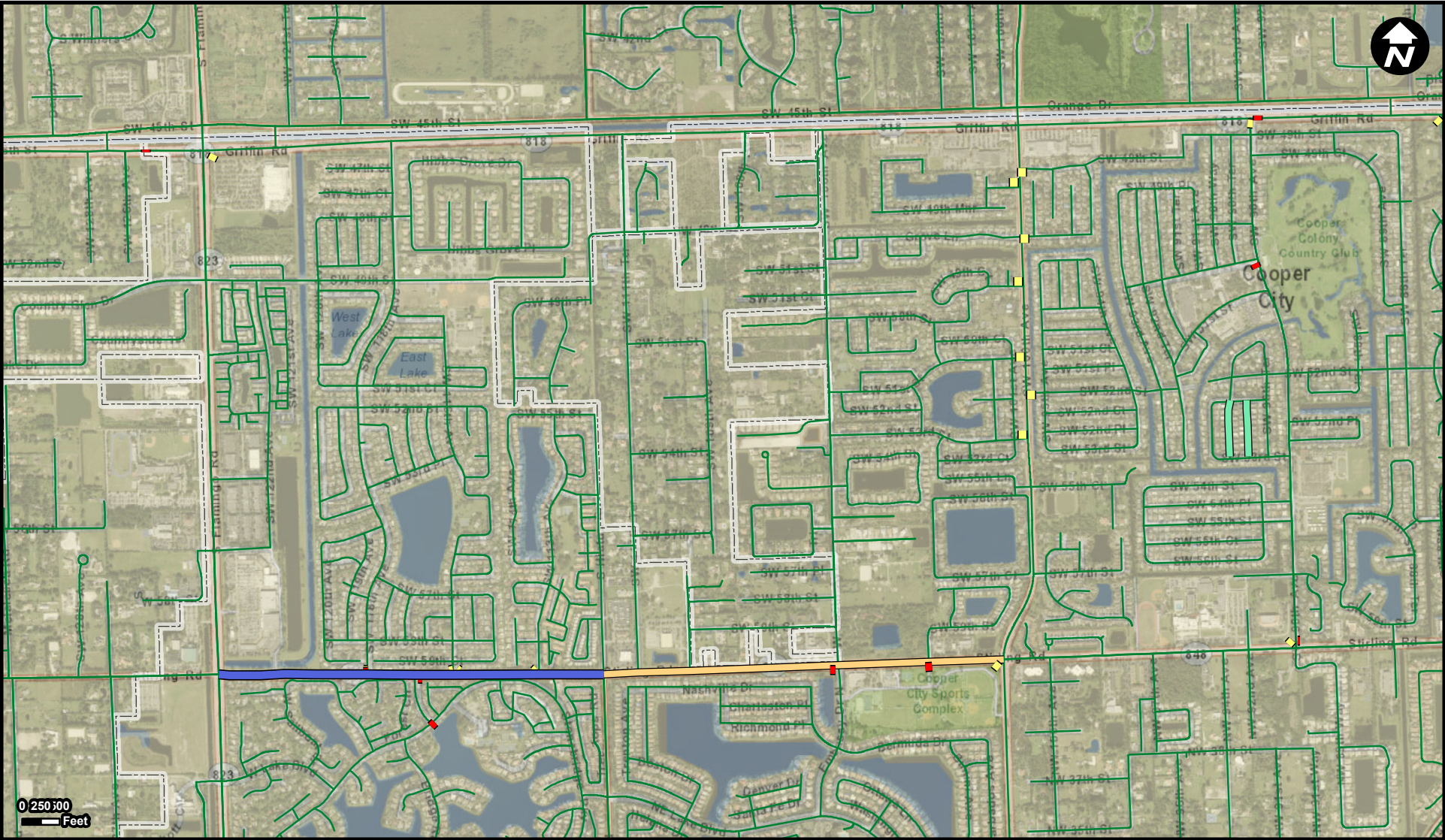
Secondary Work Mix:

Project Description & Project Scope Replacement of city entry signs & features.

Redesign and replacement of 22 City and neighborhood entry signs

FROM:

TO:



Legend

- COOP-024
- COOP-031
- COOP-035
- COOP-036
- COOP-042
- Municipality
- Unincorporated

Suggested Work Mix: Landscaping, Hardscape, Signage, Lighting

Primary Work Mix: Signing/Pavement

Secondary Work Mix:

FROM:

TO:

Project Description & Project Scope

Replacement of way finding signs.

Replacement of 10 existing way finding signs throughout the City.



COOP-042

Municipality

Unincorporated

Resiliency Improvements

Safety Project

Secondary Work Mix:

Project Description & Project Scope

Storm Water Improvements

Construct drainage improvement on Stirling Road from Flamingo Road to Hiatus Road, in association with an overall roadway improvement project.

FROM: Flamingo Road
To: Hiatus Road