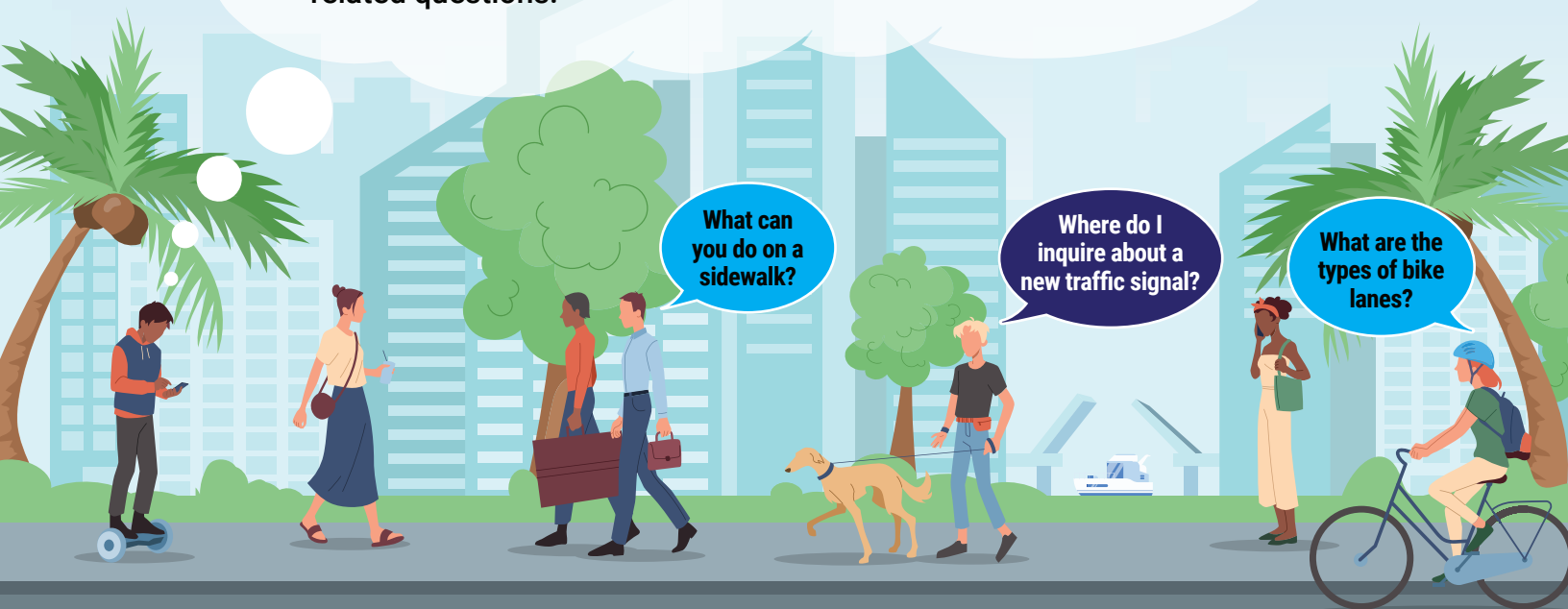


Resident Guidebook

Welcome to your Resident Guide to
Neighborhood Transportation!

Have you ever wondered how to get a stop sign installed in your neighborhood? Did you know there is an organization that prioritizes which transportation projects, like roads or bike lanes, get built first? Do you know what your role is in the transportation network?

This guidebook will introduce you to topics that cover transportation in Broward County and help clarify many of your transportation-related questions.



Did you know?

The Broward Metropolitan Planning Organization (MPO) is a federally mandated, local organization that collaborates with our cities, towns, and partner agencies to plan federally funded transportation projects in Broward County. Its board is made up of your city and county representatives, so you are directly represented in the decisions being made. While it doesn't build roads or run buses, it ensures that residents like you can get to your destination safely and on time.

Welcome to the Resident Guidebook, as you explore this guide, you'll find QR codes that link to resources for expanded ways to engage with the transportation system in your city and Broward County. You will also find information on how to initiate transportation projects to improve your community.

How can residents get involved?

You already showed your interest by picking up this guidebook! Residents have the option to attend an MPO Board or Committee meeting to learn about or influence local projects. All meetings are open to the public, livestreamed and recorded and participation is welcome. Scan the QR code for upcoming meeting dates and times.

SCAN ME!



I don't think this traffic light is timed correctly. Who can I contact?

1. Contact Broward County Traffic Engineering Division at signalout@broward.org or call (954) 847-2600
2. Provide details and suggest a solution
3. Collaborate with local advocacy organizations
4. Follow up to check on the status of your request

I need a bus shelter at the stop I use. Who can make that happen?

Public buses in Broward County are operated by **Broward County Transit (BCT)**. Confirm that the bus stop is part of the BCT network by checking their website. You can request a shelter by calling BCT's customer service number (954) 357-8400, or emailing them at cservice@broward.org. If the bus stop is outside of the BCT network, contact your city's Public Works Department.

SCAN ME!



Everyone is a pedestrian during at least one part of their commute.

BCT serves 40 million riders yearly with 397 buses in 42 routes.¹

In January 2024, Broward County Transit launched its first electric bus service between Broward and Miami-Dade.²

^{1,2} Sources: ¹ <https://www.browardmpo.org/broward-s-transportation-system>

² <https://webapps6.broward.org/newsrelease/View.aspx?intMessageId=14578>

Terms & Acronyms

American Disabilities Act (ADA)	Protects people with disabilities from discrimination.
Broward County Transit (BCT)	Owns and operates the public bus system in Broward County and funds municipal shuttle services. (954) 357-8400
Broward County Traffic Engineering Division (BCTED)	Responsible for ensuring safe and efficient traffic flow within the county, including the operation and maintenance of traffic control devices. (954) 847-2600
Bus Rapid Transit (BRT)	Buses that operate more frequently and are designed to carry larger numbers of people on dedicated lanes or more efficiently in mixed traffic.
Florida Department of Transportation (FDOT)	Funds, designs, and constructs transportation projects on state roads. They own and maintain many of the busiest roads in Broward County. (850) 414-4100
Park & Ride (P&R)	Parking areas that allow commuters to leave their cars and continue their trip using public transit, carpools, or vanpools.
Public Participation Plan (PPP)	Provides guidelines for achieving optimal public participation and includes assessment tools to evaluate the program's effectiveness.
Right-of-Way (ROW)	The legal aspect of right of way (ROW) involves having the authority to use a path, either through ownership or an easement. An easement grants the right to cross or use someone else's property without owning it—for example, to install or maintain utilities.
Sharrow	Short for "share-arrow," is a traffic lane meant to be shared equally by cars and bicycles. Sharrows differ in function and layout from designated bike lanes, which are indicated by a solid white line and a cyclist stencil on the edge of the road.
Single Occupancy Vehicle (SOV)	Vehicle that is only occupied by the driver. Examples include cars, trucks, vans, SUVs, and motorcycles.
State Road (SR)	Public road that is maintained or numbered by the state.
Traffic Calming	Refers to physical design and other roadway measures used to reduce vehicle speeds and improve safety for pedestrians, cyclists, and drivers.
Transportation Options (TOPS!)	Broward County Transit's program offering door-to-door paratransit service and free bus passes for eligible residents with disabilities or low incomes who cannot use regular routes. (954) 357-8400

SCAN ME!



How do I request a bike rack?

Contact your municipality to request a bike rack. If the desired location falls outside of city limits, contact Broward County to submit a request. Include the location and reason, and follow up to check the status. *Note: reference QR code (cities) on page 5.*

In Florida, children under 16 must wear a helmet when riding a bike or as a passenger.

BCT offers a Transportation Options (TOPS!) program that includes bus passes and paratransit.

What can you do on a sidewalk?

Ride bikes, scooters, etc.

- Sidewalks **may not** be used by vehicles other than those that utilize human power
- If a vehicle has a motor, it likely cannot be used on a sidewalk
- Bicycles are allowed on sidewalks unless a specific city ordinance prohibits them

Who owns the road?

Check out the Broward County Interactive Jurisdictional Map to see which agency is responsible.

SCAN ME!



How do I inquire about adding a sidewalk in my neighborhood?

1. Determine who owns the road for the sidewalk you would like to request (City or County)
2. Contact the local Public Works or Transportation department responsible for the road
3. Provide details and justification
 - **Requesting a new sidewalk may require a petition with signatures from the households in the proposed sidewalk area**
 - **To help achieve this, you could collaborate with local advocacy groups**
4. Follow up with the status of your sidewalk request

How do I inquire about a crosswalk at an intersection/mid-block?

1. Determine who owns the road for the intersection you would like to request (City, County or State)
2. Contact the local Public Works Department or the Broward County Traffic Engineering Division (954) 847-2600
3. Submit a request to the Broward County Traffic Engineering Division or local Public Works Department providing the intersection location and reasoning
 - **Mid-block crosswalks require additional evaluation for safety, visibility, and the impact on traffic**
4. Follow up about the status of your crosswalk request

How do I inquire about adding a bus stop in my neighborhood?

1. Broward County Transit (BCT) is the primary provider for bus service in Broward County
2. Submit a request to BCT Customer Service by phone, (954) 357-8400, or by email at cservice@broward.org
 - **Provide the location of the requested bus stop and the reasoning**
3. BCT may conduct assessments to evaluate the feasibility of an additional bus stop
4. Follow up on the status of your bus stop request
 - **Collaborate with advocacy groups and attend public meetings to support your request**

How can I get a bus ticket/pass? Mobile App?

Physical passes purchased in two ways:

In-person: Paper passes can be purchased via cash at any one of the following locations:

- BCT Central Terminal
- Lauderhill Transit Center
- Northeast Transit Center
- Most Broward County Libraries
- Most Check Cashing Stores

Electronically: Passes can be purchased online through Broward County's website. BCT mobile app can be downloaded from the same weblink.

SCAN ME!



Sidewalk repairs?

Contact your municipality's Public Works Department. Notify them of the damage and its location.

SCAN ME!



The entire bus fleet is air-conditioned, wheelchair and scooter accessible, and includes bike racks or bike accommodations.³

What are curb cuts?

- A "curb cut" refers to an opening in a curb, typically creating a ramp to allow access between a sidewalk and a street or roadway. These are often designed to provide access for wheelchairs, strollers, and other wheeled devices
- They also help facilitate the runoff and drainage of stormwater
- For individuals using wheelchairs or strollers, curb cuts improve accessibility and help meet ADA requirements

How can I request a new traffic signal?

1. Determine who owns the road for the traffic signal you want to request (City, County or State) *Note: the QR Code can be found on Page 3*
2. Submit a request to the local Public Works Department or the Broward Traffic Engineering Division providing the intersection's location and reasoning
3. A traffic study may be conducted by the road owner
4. If the request is approved, the implementation process begins
 - **To help achieve approval, collaborate with local advocacy groups and attend city commission meetings to support**
5. Follow up to check the status of your traffic signal request

Who do I call if a traffic light is out or broken?

Contact the Broward County Traffic Engineering at (954) 847-2600 or email SignalOut@broward.org

How can I request a stop sign?

- To request a stop sign in Broward County, Florida, you can contact the Broward County Traffic Engineering Division
- Call them during normal business hours at **(954) 847-2600**
- Also, contact the BCTED to report downed, damaged, or missing stop signs

How can I request that cars slow down in my neighborhood?

- Getting cars to slow down is called **traffic calming**
- You must contact your city's planning, traffic, or related division to request a traffic calming measure
- Additional steps may be needed before a traffic calming measure can be implemented
- Turn to **Page 6** for examples

How do I get a new streetlight/lamp?

1. Determine who owns the road where you want to request a traffic signal (City, County or State)
 - **Neighborhood requests may go through the Homeowners Association (HOA)**
 - **Florida Power & Light (FPL) owns most of the streetlights in Broward County**
2. Submit a request to the responsible organization or utility provider, including the proposed location and the reasoning for your request
 - **You can gather support from neighbors or your HOA to strengthen your request**

I didn't know you could report potholes, broken lights, or missing signs using an online form or by calling. Just include a photo and location to help get it fixed faster!

A cyclist on the road has the rights and duties of a motor vehicle.

In 2023, Port Everglades remained one of the busiest container ports in the nation, serving 6.4 million tons of containerized cargo and 19.8 million tons of petroleum and other cargo.⁴

As of October 2023, there are 320 public EV charging stations in Broward County.⁵

⁴⁻⁵ Source: ⁴https://www.browardmpo.org/images/WhatWeDo/Freight/BMPO_SOS_Report_2025_FINAL.pdf

⁵https://www.browardmpo.org/images/WhatWeDo/Climate_Change/Electric_Vehicles/EVMP_Report.pdf

Scan QR Codes to Start Exploring Your City, County, and MPO's Resources!

Broward
MPO



City
Websites



Broward
County
Maps



Can I ride my bike on the sidewalk even if a bike lane exists?

Yes, it is legal to ride your bike on the sidewalk, but there are things to consider:

- Pedestrians have the right-of-way
- You can use sidewalks to change directions once it is safe to do so
- Local rules may prohibit you from doing so if a bike lane exists
- Overall safety, **stay alert!**

Debris is on the road. Who do I call?

- If on a state road, dial ***FHP (*347)** on your cell phone to inform the Florida Road Ranger Service Patrol.
- If on a local road, contact the Broward County Highway and Bridge Maintenance Division at **streets@broward.org** or call **(954) 357-6040**

Who fills potholes?

Local Roads: The municipality's Public Works Department

- Contact your municipality's Public Works Department or Broward County
- Notify them of the location of the pothole

State Roads and Interstates: Florida Department of Transportation (FDOT)

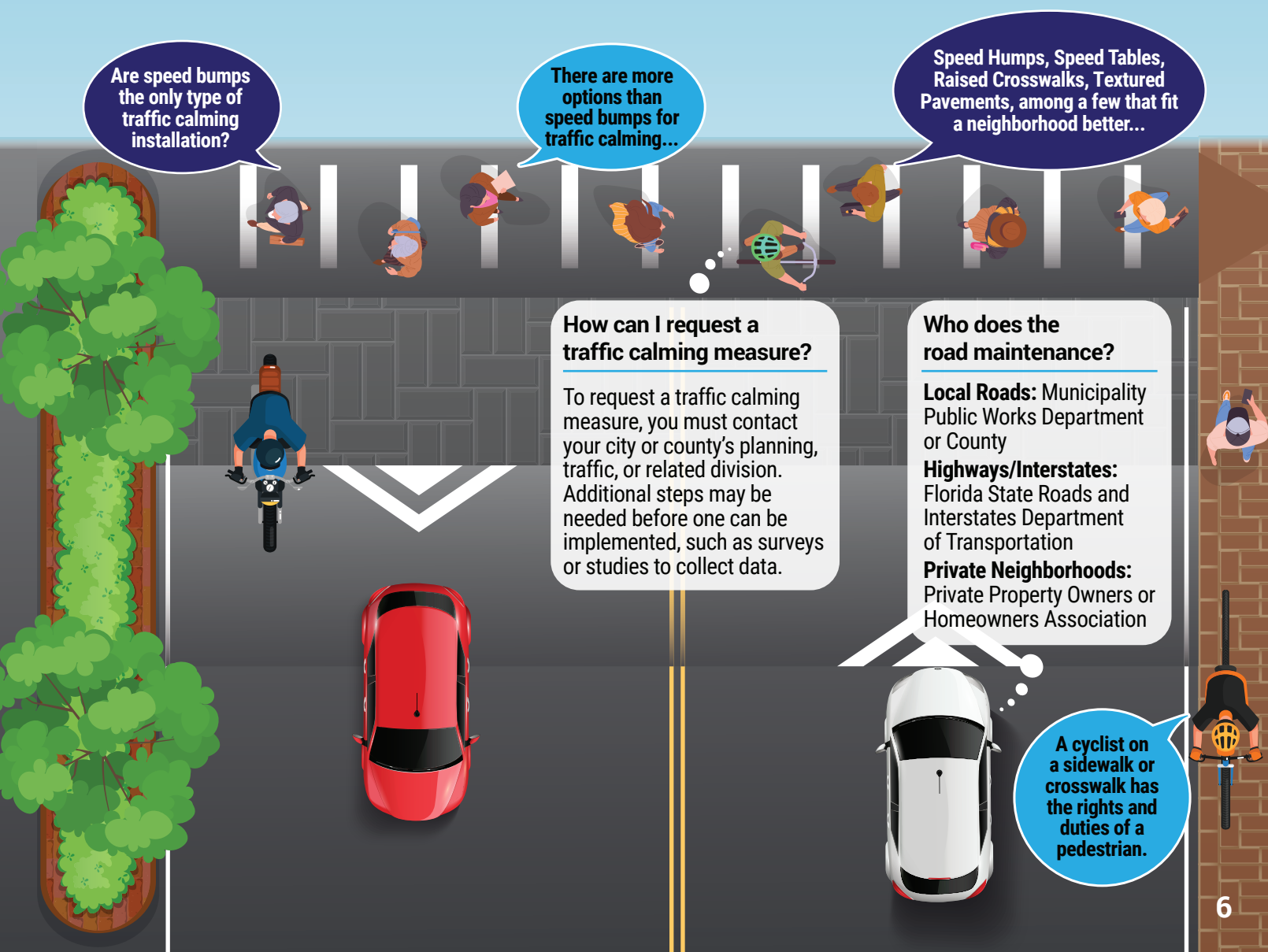
Private Neighborhoods: Private Property Owners or Homeowners Association

What does this bike symbol mean?

Unlike designated bike lanes, two chevrons above a bicycle—known as a “**sharrow**”—indicate that the lane is shared by both cars and bicycles. It reminds drivers to expect cyclists and helps guide bikers where to ride safely. For any further information please call the FDOT hotline at **(850) 414-410**

“Sometimes I get nervous with traffic at my back, but I know that if I ride against traffic, it disrupts the flow and increases the risk of collisions.”

Traffic Calming Devices	Description	Pros	Cons
Speed Bumps	<ul style="list-style-type: none"> • Short, raised obstacles 	<ul style="list-style-type: none"> • Very low vehicle speeds 	<ul style="list-style-type: none"> • Could delay emergency vehicles
Speed Humps	<ul style="list-style-type: none"> • Longer, gentler raised obstacles 	<ul style="list-style-type: none"> • Better for emergency vehicles than speed bumps 	<ul style="list-style-type: none"> • Increased noise and vibration during usage
Speed Tables	<ul style="list-style-type: none"> • Flat-topped speed humps 	<ul style="list-style-type: none"> • Can be used as a raised pedestrian crossing 	<ul style="list-style-type: none"> • Possible drainage concerns
Raised Mid-Block Crosswalks	<ul style="list-style-type: none"> • Elevated to the level of the sidewalk 	<ul style="list-style-type: none"> • Increased visibility of pedestrians • Increased accessibility for wheelchairs, strollers, etc. 	<ul style="list-style-type: none"> • High installation costs • May impede emergency vehicles
Textured Pavements	<ul style="list-style-type: none"> • Textured pavement that brings attention through visual, noise and vibration 	<ul style="list-style-type: none"> • Draws driver's attention to that part of the road 	<ul style="list-style-type: none"> • Increased maintenance



Responsibilities of the MPO

The responsibility of any MPO is to ensure smooth connections between highways, public transit, and sidewalks through transportation planning, community engagement, and project funding and management.

Transportation Planning

- Understand transportation problems and identify potential solutions across the county to give people more public transportation options.
- Focus on making transit available to everyone and support projects that help the economy grow.


Community Engagement

- Host workshops and meetings to hear people's transportation needs.
- Raise awareness of upcoming transportation projects and how you might be impacted during construction and the benefits once its completed.

Project Funding & Management

- Secures money for transportation projects and additional federal grant opportunities.
- Choose which transportation projects receive funding and prioritize those that have the greatest impact.

Once a major project is ready to begin, how long does it take?

 **Keep in mind:** The amount of time a project takes is dependent on its complexity and funding availability.

Phase 1

Planning Phase 1 - 3 years

This phase involves identifying the problem, reaching out to the community, gathering information, and defining the project's scope. It's also when funding and priorities are decided.

Phase 2

Environmental Phase 1 - 5 years

Project development & environmental phase (PD&E) comes next. That means reviewing laws under the National Environmental Policy Act (NEPA), considering potential impacts, and gathering public feedback to make sure all concerns are addressed.

Phase 3

Design Phase 1 - 3 years

Engineers and designers get to work on detailed plans. There's close coordination with stakeholders, and the public gets another chance to weigh in before moving forward.

Phase 4

Right of Way Acquisition Phase (if needed) 1 - 2 years

(dependent of the requirement)

The Uniform Act is a law that sets the rules government agencies must follow to make sure people are treated fairly when their property is needed for public projects.

Phase 5

Construction Phase 1 - 5 years

Construction Open House kicks off this phase. Timelines can shift depending on how complex the project is, along with weather conditions and unexpected delays.

Phase 6

Post-Construction 6 months - 1 year

Once construction wraps up, the focus shifts to final inspections, landscaping, and tying up any loose ends to officially close out the project.

**Total range of a major project
timeline - 5 to 20 years**

STAY CONNECTED



"Wow! That would be great for our kids and our future."

"How old will I be?"

