

Legend

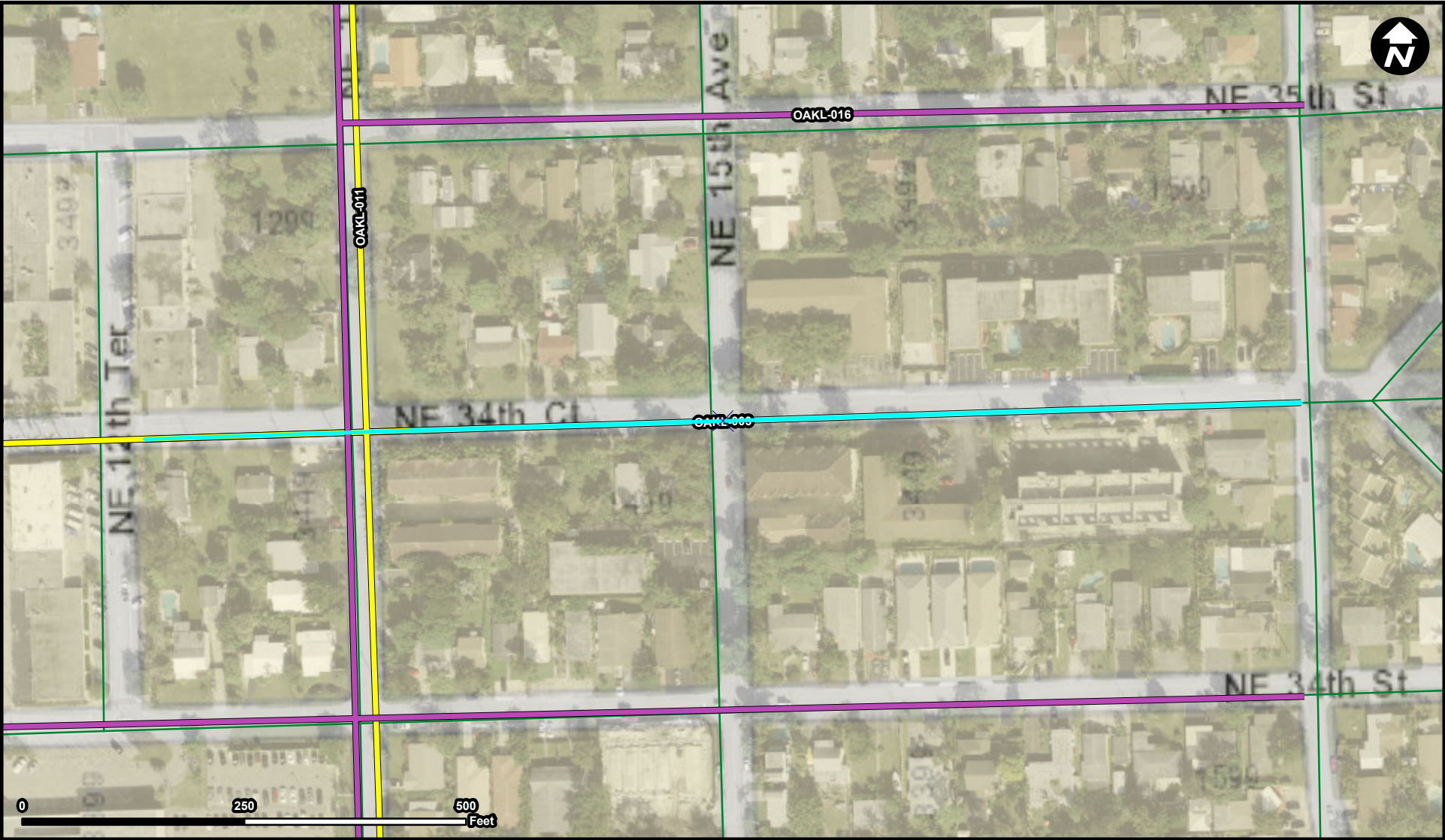
- | | | | | | |
|--|----------|--|----------|--|----------------|
| | OAKL-001 | | OAKL-016 | | OAKL-026 |
| | OAKL-005 | | OAKL-018 | | Municipality |
| | OAKL-008 | | OAKL-019 | | Unincorporated |
| | OAKL-009 | | OAKL-020 | | |
| | OAKL-011 | | OAKL-021 | | |
| | OAKL-012 | | OAKL-023 | | |
| | OAKL-015 | | OAKL-024 | | |

Suggested Work Mix: Bicycle Pedestrian Infrastructure
Primary Work Mix: Bike Lane Sidewalk
Secondary Work Mix: Safety Project

Project Description & Project Scope
Prospect Road Enhancement, Complete Street improvement on Prospect Rd. including on-street parking, dedicated solid green bike lanes, sidewalks and landscaping.

Source: Broward Municipal Surtax Projects - BMPO; ESRI Basemap

FROM: Commercial Highway
To: Dixie Highway



Legend

- OAKL-003
- OAKL-011
- OAKL-016
- Municipality
- Unincorporated

Suggested Work Mix: Bicycle Pedestrian Infrastructure

Primary Work Mix: Bike Lane Sidewalk

Secondary Work Mix: Safety Project

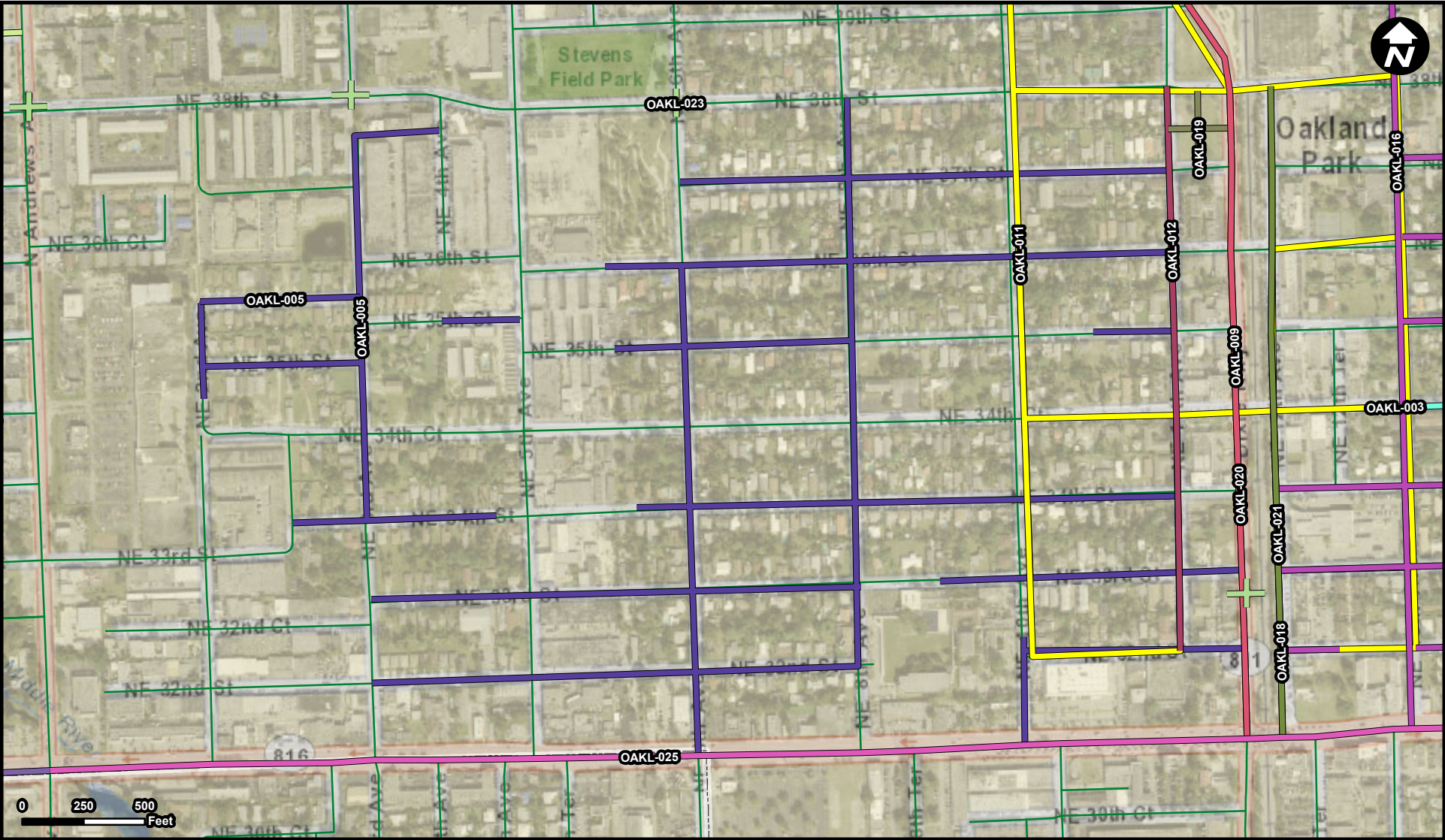
Project Description & Project Scope

NE 34 Ct from NE 12 Terrace to NE 16 Avenue, Roadway enhancement including 4' solid green bike lanes, sidewalks, lighting, possible landscaping and other aesthetic improvements.

NE 34 Ct from NE 12 Terrace to NE 16 Avenue, Roadway enhancement including 4' solid green bike lanes, sidewalks, lighting, possible landscaping and other aesthetic improvements.

FROM: NE 12 Terrace

To: NE 16 Avenue,



Legend

OAKL-003	OAKL-015	OAKL-023
OAKL-005	OAKL-016	OAKL-025
OAKL-009	OAKL-018	
OAKL-010	OAKL-019	Municipality
OAKL-011	OAKL-020	Unincorporated
OAKL-012	OAKL-021	

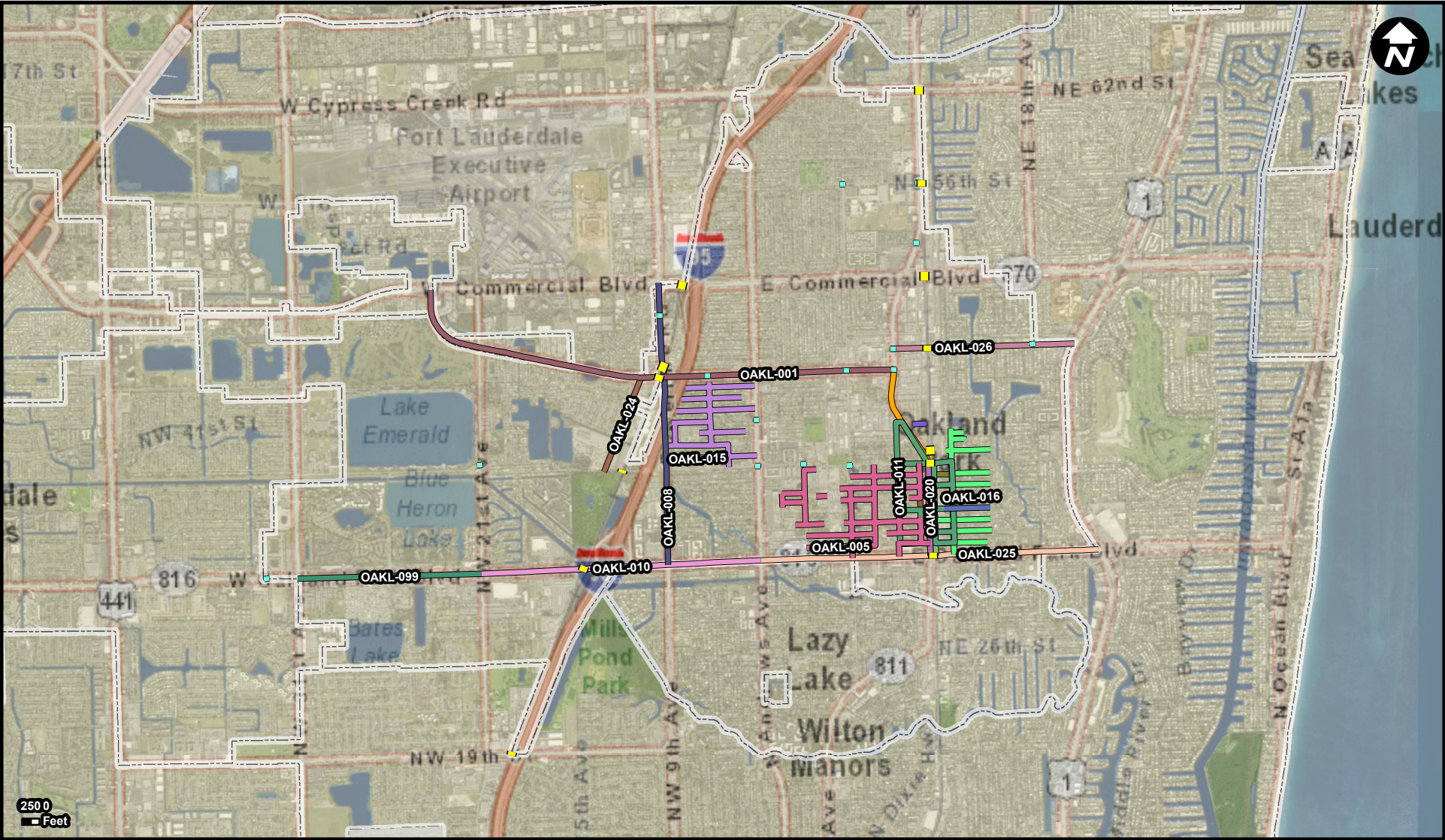
Suggested Work Mix: Bicycle Pedestrian Infrastructure
Primary Work Mix: Bike Lane Sidewalk
Secondary Work Mix: Safety Project

Project Description & Project Scope

Infill of sidewalks around Oakland Park Elementary School. From Oakland Park Blvd. north to NE 38th Street (Park Lane) and from NE 2nd Avenue east to Dixie Highway.

Project includes the installation of sidewalks and the installation of necessary drainage elements deemed necessary as a result of the sidewalk improvements. Project also includes the relocation of existing utilities found to be in conflict with the prop

FROM:
To:



Legend

OAKL-001	OAKL-010	OAKL-019	OAKL-026
OAKL-003	OAKL-011	OAKL-020	OAKL-099
OAKL-005	OAKL-012	OAKL-021	
OAKL-007	OAKL-015	OAKL-023	Municipality
OAKL-008	OAKL-016	OAKL-024	Unincorporated
OAKL-009	OAKL-018	OAKL-025	

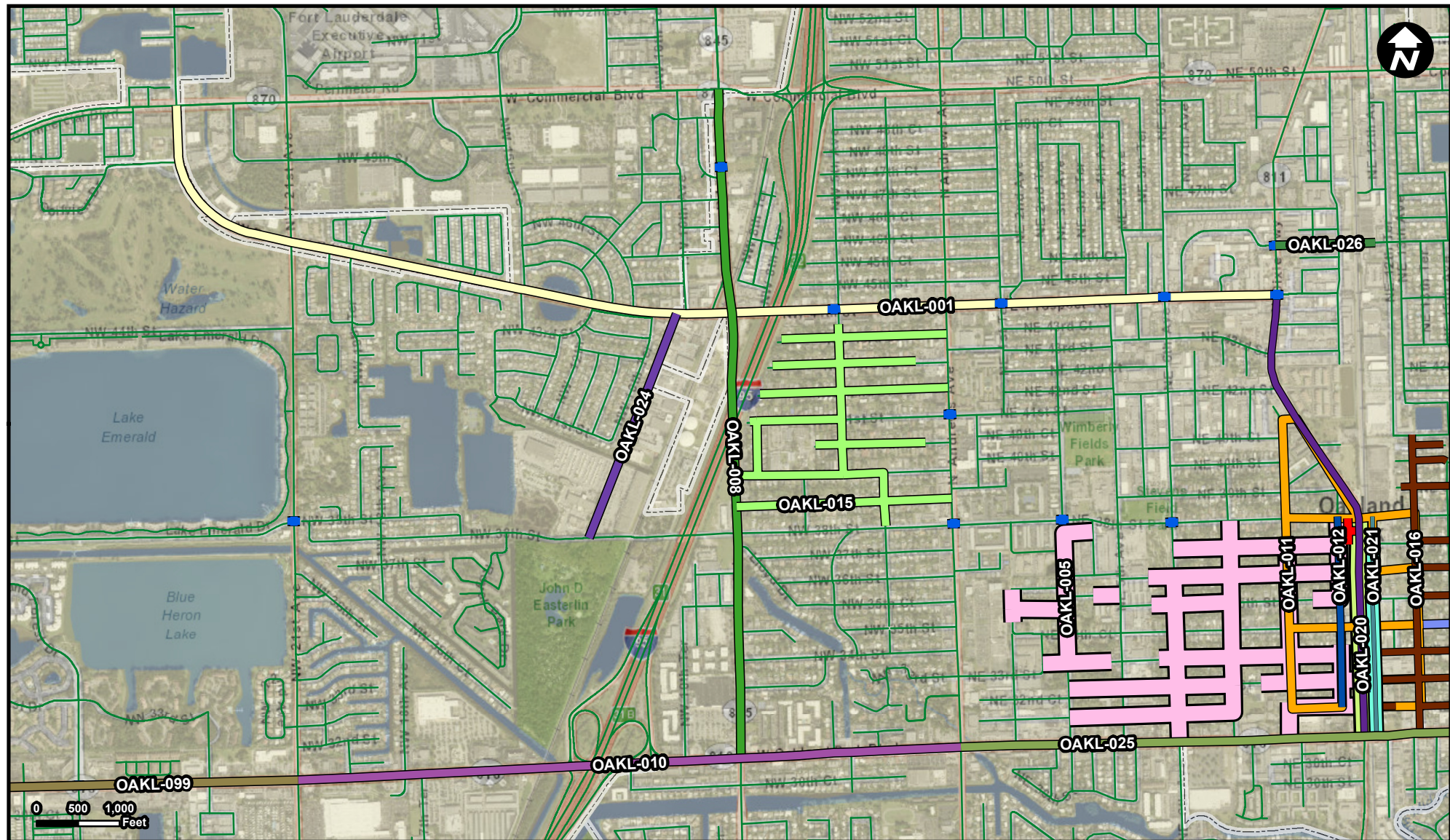
Suggested Work Mix: Bicycle Pedestrian Infrastructure
Primary Work Mix: Safety Project
Secondary Work Mix:

Project Description & Project Scope

Study to provide recommendations for safety improvements to the CSX and FEC railway crossings.

Study to provide recommendations for safety improvements to the CSX and FEC railway crossings.

FROM:
TO:



Legend

OAKL-001	OAKL-012	OAKL-023
OAKL-003	OAKL-015	OAKL-024
OAKL-005	OAKL-016	OAKL-025
OAKL-008	OAKL-018	OAKL-026
OAKL-009	OAKL-019	OAKL-099
OAKL-010	OAKL-020	Municipality
OAKL-011	OAKL-021	Unincorporated

Suggested Work Mix:

Primary Work Mix:

Secondary Work Mix:

Bicycle Pedestrian Infrastructure

Safety Project

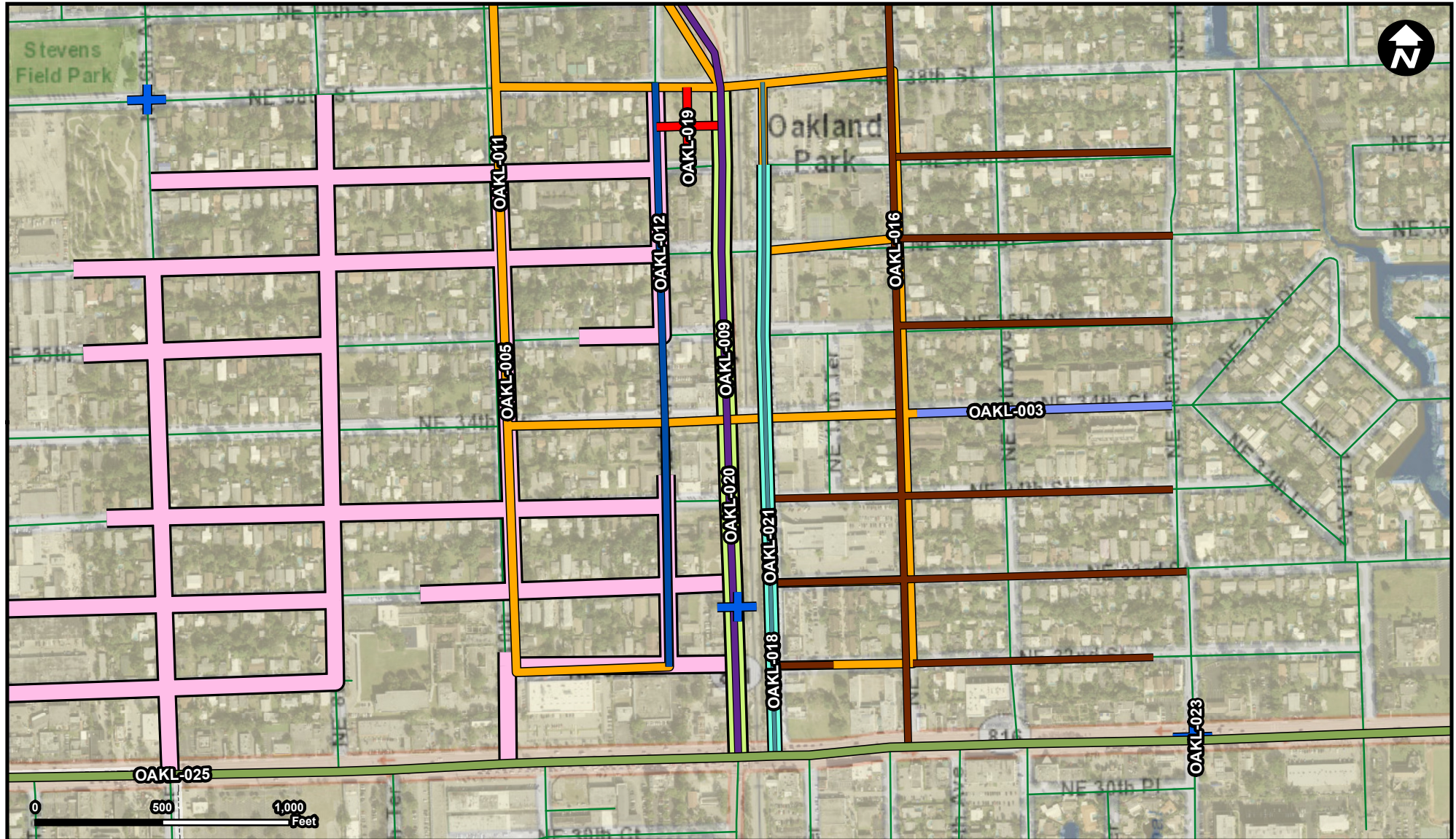
Bike Lane Sidewalk

Project Description & Project Scope

Powerline Rd, Road diet and addition of bike lanes and landscaping on Powerline Rd from Oakland Park Blvd to Commercial Blvd.

Powerline Rd, Road diet and addition of bike lanes and landscaping on Powerline Rd from Oakland Park Blvd to Commercial Blvd.

FROM: Oakland Park Blvd
To: Commercial Blvd.



Legend

	OAKL-003		OAKL-019
	OAKL-005		OAKL-020
	OAKL-009		OAKL-021
	OAKL-011		OAKL-023
	OAKL-012		OAKL-025
	OAKL-016		Municipality
	OAKL-018		Unincorporated

Suggested Work Mix:
Primary Work Mix:
Secondary Work Mix:

Landscaping, Hardscape, Signage
Landscaping

Project Description & Project Scope

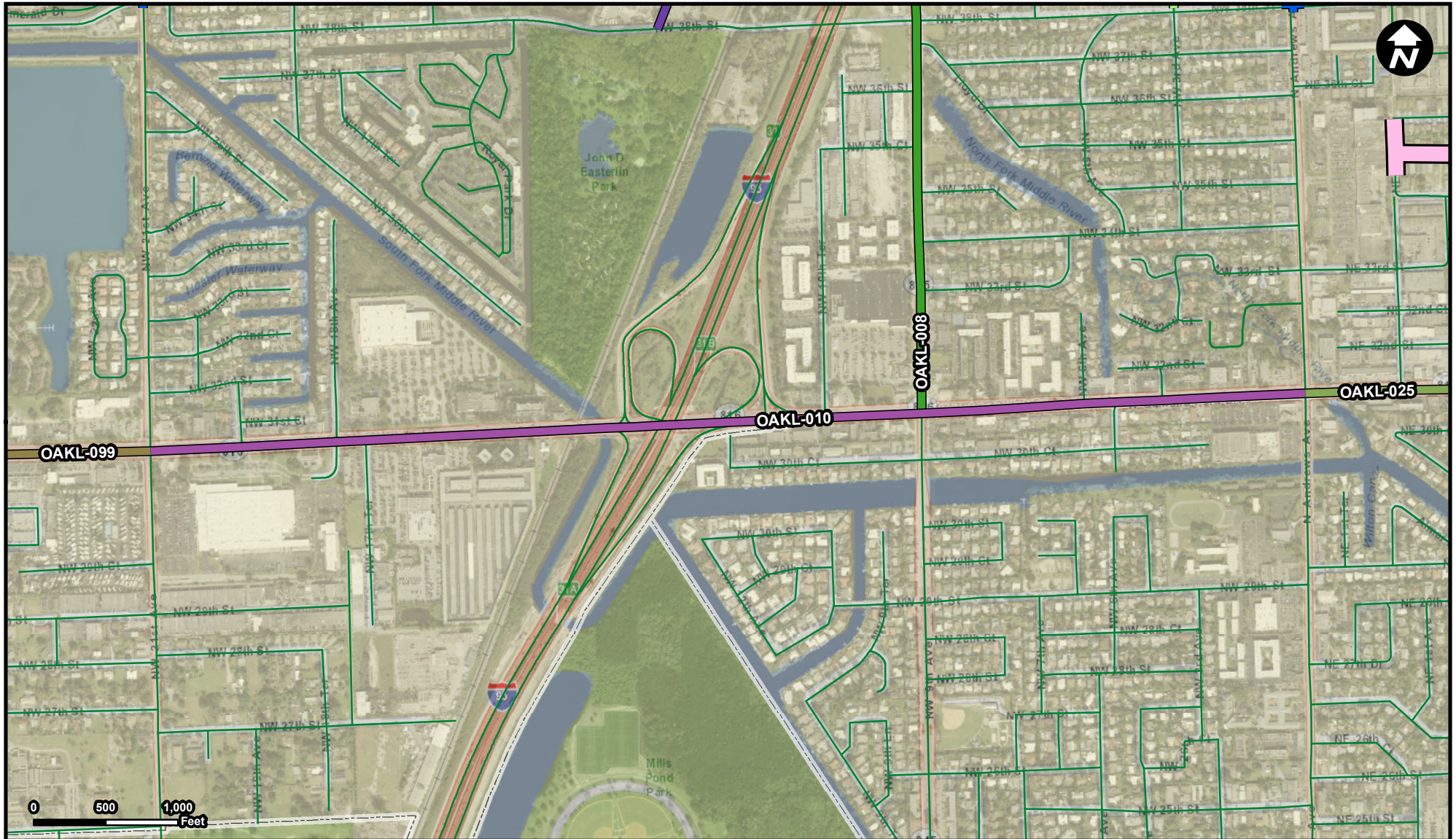
Dixie Highway Landscape Improvements Landscape improvement on Dixie Highway between Oakland Park Blvd and Park Lane East.

Dixie Highway Landscape Improvements Landscape improvement on Dixie Highway between Oakland Park Blvd and Park Lane East.

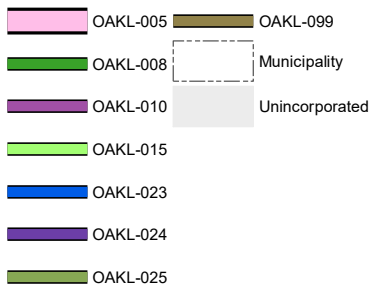
FROM: Oakland Park Blvd
To: Park Lane East

OAKL-010

Oakland Park Blvd Corridor Improvement



Legend



Suggested Work Mix:

Primary Work Mix:

Secondary Work Mix:

Project Description & Project Scope

Signal Enhancement

TSM&O

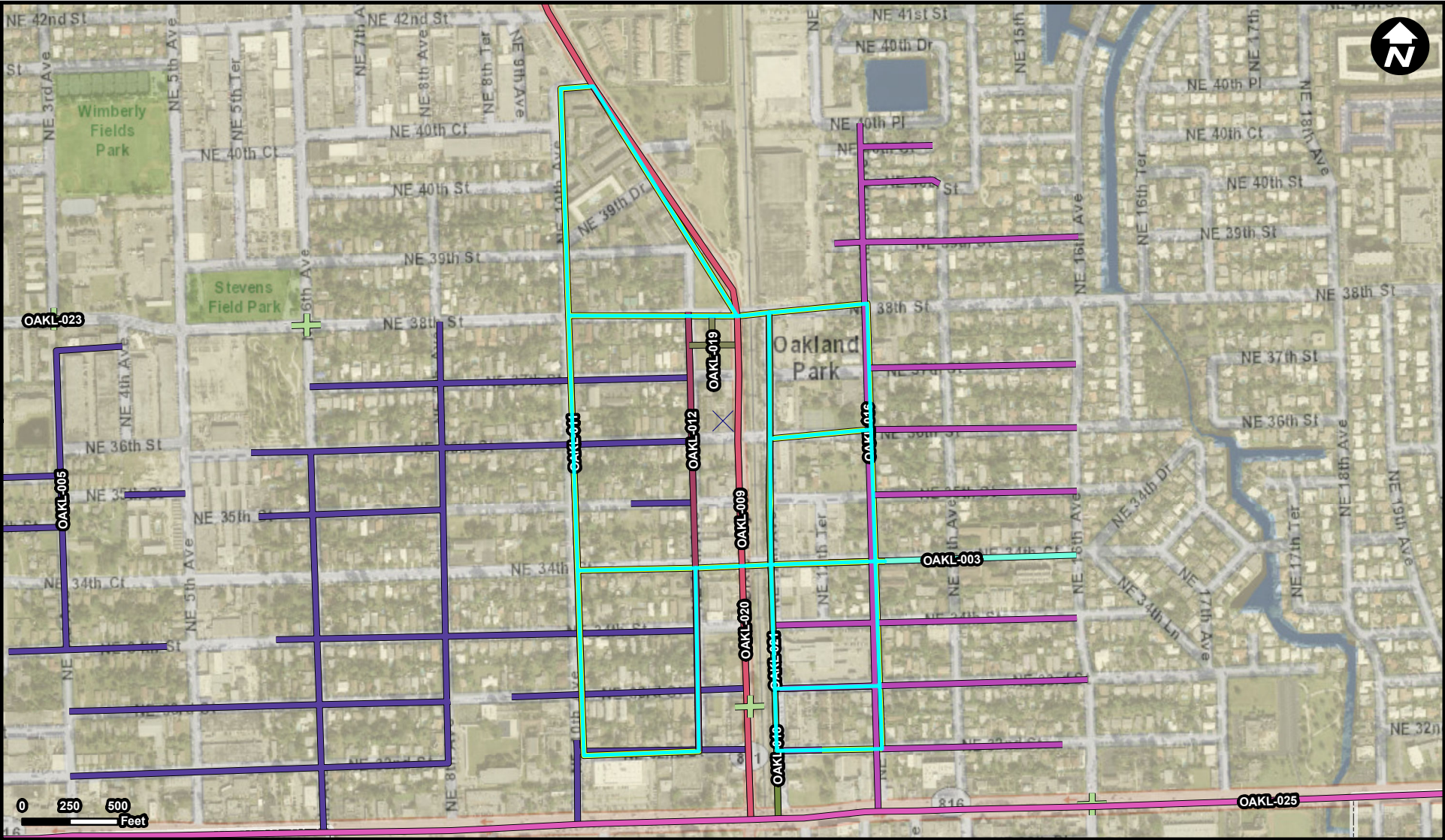
Safety Project

Oakland Park Blvd & I95, from NW 21st Ave to Andrews Ave. Corridor improvements include signal synchronization, improved turning movements and pedestrian facilities, to name a few elements, needed to help alleviate traffic congestion

Improvements include signal synchronization, improved turning movements and pedestrian facilities, to name a few elements.

FROM: NW 21st Ave
To: Andrews Ave

Source: Broward Municipal Surtax Projects - BMPO; ESRI Basemap



Legend

OAKL-003	OAKL-018	Municipality
OAKL-005	OAKL-019	Unincorporated
OAKL-009	OAKL-020	
OAKL-011	OAKL-021	
OAKL-012	OAKL-023	
OAKL-016	OAKL-025	

Suggested Work Mix: Transit
Primary Work Mix: TSM&O
Secondary Work Mix: Transit Improvement

Project Description & Project Scope

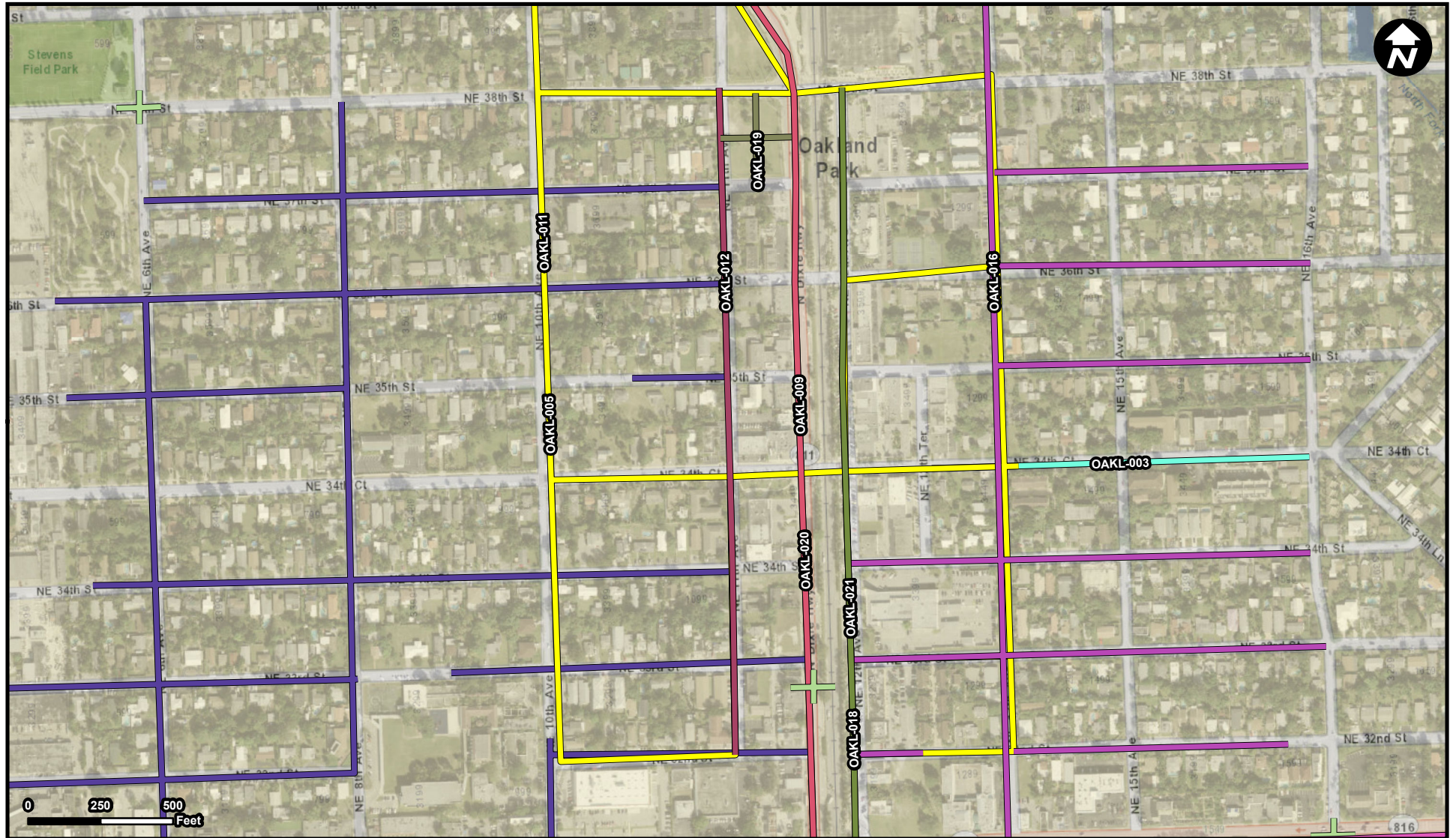
Oakland Park Down Town to Tri-Rail Station Implement a downtown circulator with connections to the Tri-Rail Station and the future Coastal Link Railway

Oakland Park Down Town to Tri-Rail Station Implement a downtown community shuttle with connections to the Tri-Rail Station and the future Coastal Link Railway. Creates connectivity to existing and future mass transit options. This was identified in the C

FROM:
To:

OAKL-012

Project Name
N.E. 11th Avenue Corridor Improvements



Legend

OAKL-003	OAKL-018	Municipality
OAKL-005	OAKL-019	Unincorporated
OAKL-009	OAKL-020	
OAKL-011	OAKL-021	
OAKL-012	OAKL-022	
OAKL-016	OAKL-025	

Suggested Work Mix: Bicycle Pedestrian Infrastructure
Primary Work Mix: Safety Project
Secondary Work Mix: Bike Lane Sidewalk

Project Description & Project Scope

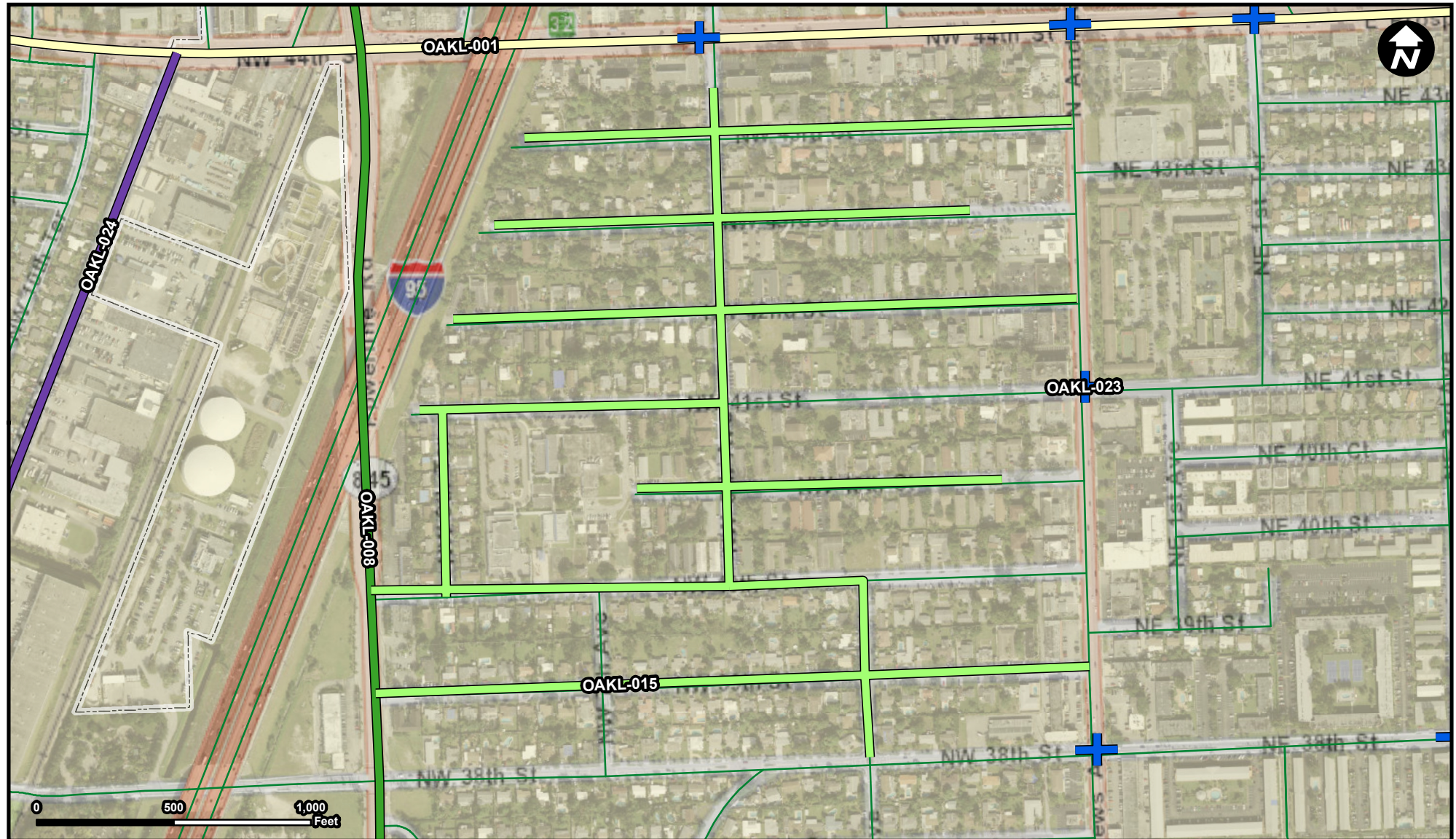
NE 11th Ave from Oakland Park Blvd to Park Lane (NE 38th Street) into a multi-modal friendly corridor to further the redevelopment efforts. stamped asphalt sections, angled on-street parking, sidewalk installation, drainage improvements, landscaping enhancement

Project elements could include the following: stamped asphalt sections, angled on-street parking, sidewalk installation, drainage improvements, landscaping enhancements and other aesthetic improvements.

FROM: Oakland Park Blvd
TO: Park Lane (NE 38th Street)

OAKL-015

Project Name
Lloyd Estates Elementary School Safe Routes



Legend

- OAKL-001
- OAKL-008
- OAKL-015
- OAKL-023
- OAKL-024
- Municipality
- Unincorporated

Suggested Work Mix:
Primary Work Mix:
Secondary Work Mix:

Bicycle Pedestrian Infrastructure
Bike Lane Sidewalk
Safety Project

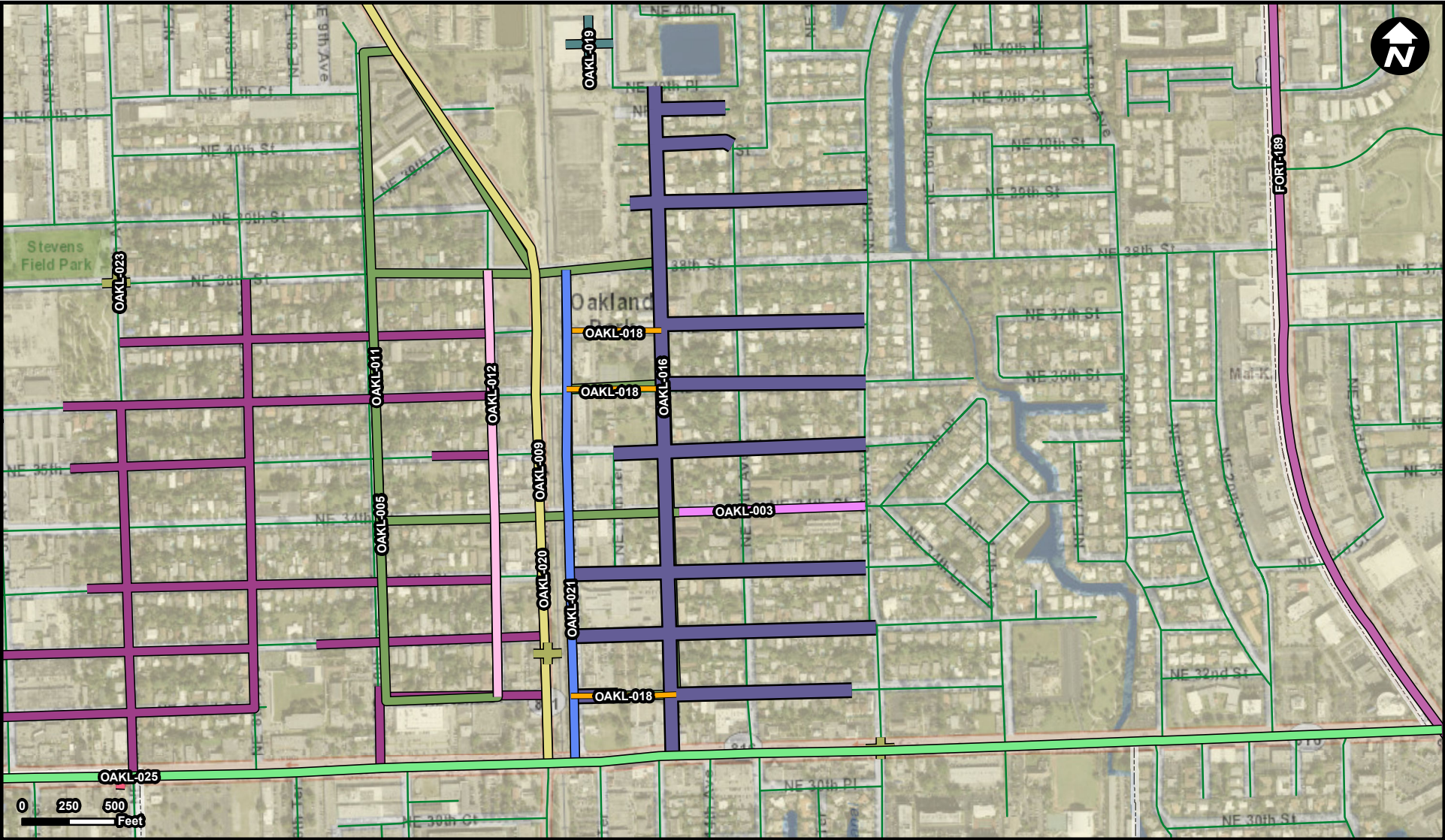
Project Description & Project Scope

Continuous sidewalk system to Lloyd Estates Elementary School. Project boundaries are from Powerline Rd. east to Andrews Avenue and from NW 38th Street north to NW 44th Street.

The proposed project will provide a continuous sidewalk system to Lloyd Estates Elementary School. Install/replace an estimated 14,750 linear feet of 5' OC sidewalk. Install ADA ramps, crosswalks, curbs and gutter

Source: Broward Municipal Surtax Projects - BMPO; ESRI Basemap

FROM:
To:



Legend

	FORT-189		OAKL-016		OAKL-025
	OAKL-003		OAKL-018		WILT-009
	OAKL-005		OAKL-019		Municipality
	OAKL-009		OAKL-020		Unincorporated
	OAKL-011		OAKL-021		
	OAKL-012		OAKL-023		

Suggested Work Mix: Bicycle Pedestrian Infrastructure
Primary Work Mix: Bike Lane Sidewalk
Secondary Work Mix: Safety Project

Project Description & Project Scope

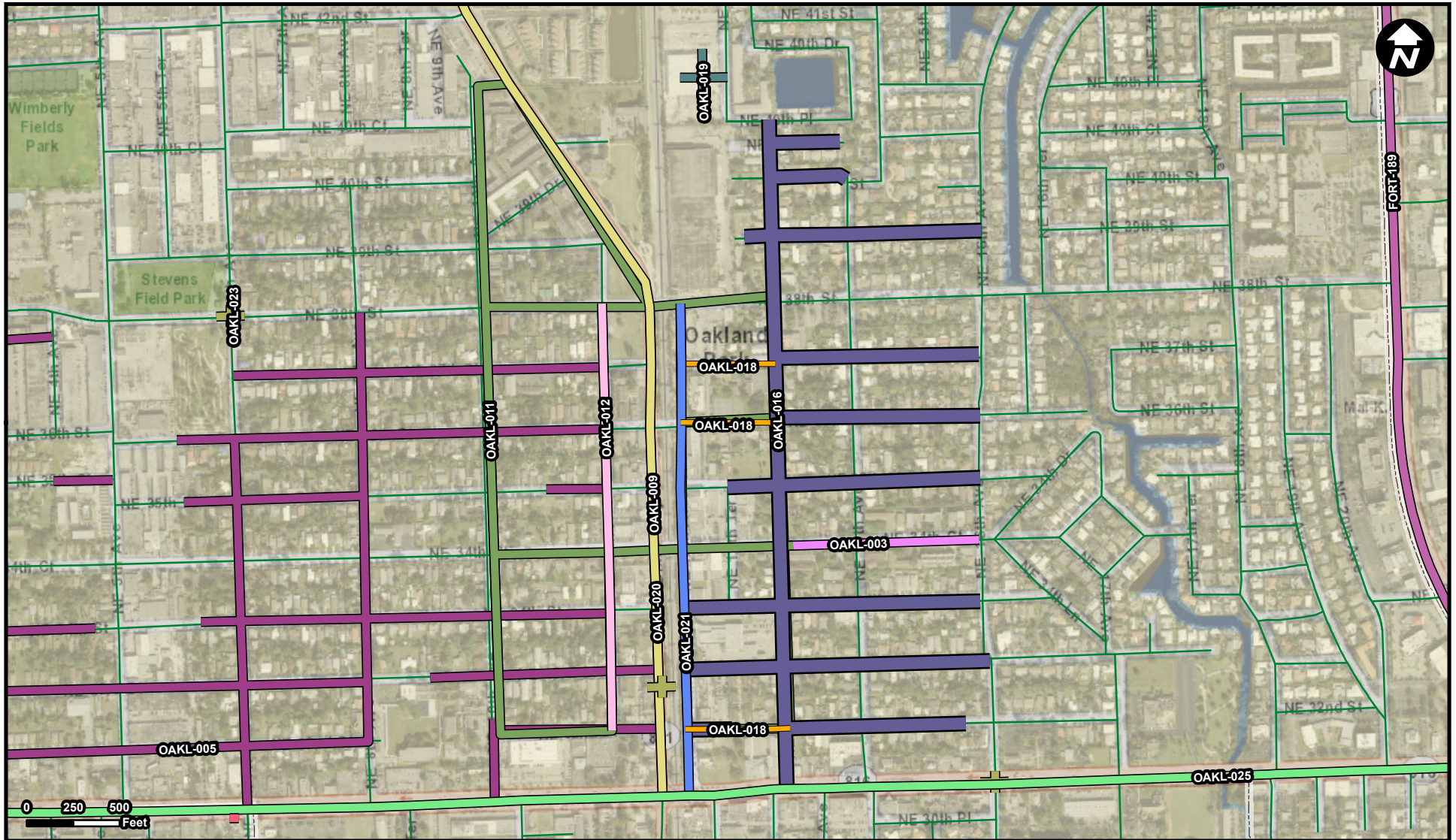
Installation of shared used path on NE 13th Avenue from Oakland Park Boulevard and sidewalks on side street connecting Main Street to 16th Avenue.

Installation of shared used path on NE 13th Avenue from Oakland Park Boulevard and sidewalks on side street connecting Main Street to 16th Avenue. Project will include the installation of drainage as required due to the shared use path installation as w

FROM:
TO:

OAKL-018

Project Name
Mainstreet Drainage



Legend

-
- | Municipality | Color | Status |
|--------------|--------------|----------------|
| FORT-189 | Light Purple | Municipality |
| OAKL-016 | Dark Purple | Municipality |
| OAKL-025 | Light Green | Municipality |
| OAKL-003 | Light Pink | Municipality |
| OAKL-018 | Orange | Municipality |
| WILT-009 | Red | Municipality |
| OAKL-005 | Dark Purple | Municipality |
| OAKL-019 | Dark Teal | Municipality |
| OAKL-009 | Teal | Municipality |
| OAKL-020 | Yellow | Municipality |
| OAKL-011 | Green | Municipality |
| OAKL-021 | Blue | Municipality |
| OAKL-012 | Pink | Municipality |
| OAKL-023 | Olive Green | Municipality |
| | | Unincorporated |

Suggested Work Mix: Resiliency Improvements

Primary Work Mix:

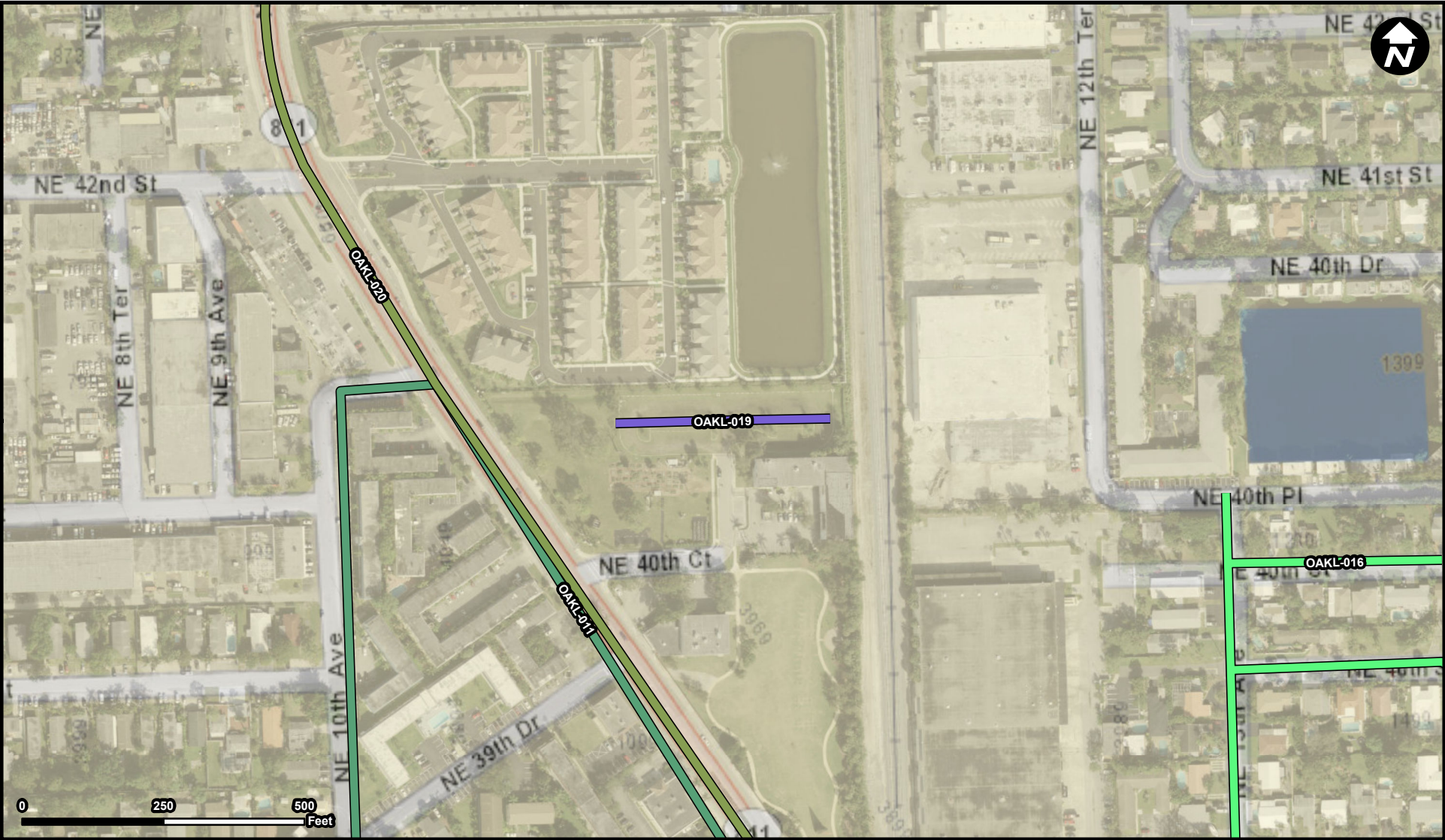
Secondary Work Mix:

Project Description & Project Scope

Installation of pump station and drainage pipe to connect to existing 72" trunkline that outfalls into C-13.

Installation of pump station and drainage pipe to connect to existing 72" trunkline that outfalls into C-13.

FROM:
TO:



Legend

- OAKL-011
- OAKL-016
- OAKL-019
- OAKL-020
- Municipality
- Unincorporated

Suggested Work Mix: Capacity Increase, Widening
Primary Work Mix: Parking Facility
Secondary Work Mix: Transit Improvement

Project Description & Project Scope

From Dixie Highway to NE 40 Ct In support of the proposed Coastal Link, the City requests funding for the construction of a multi-level parking structure for the City's downtown Transit and future railway station.

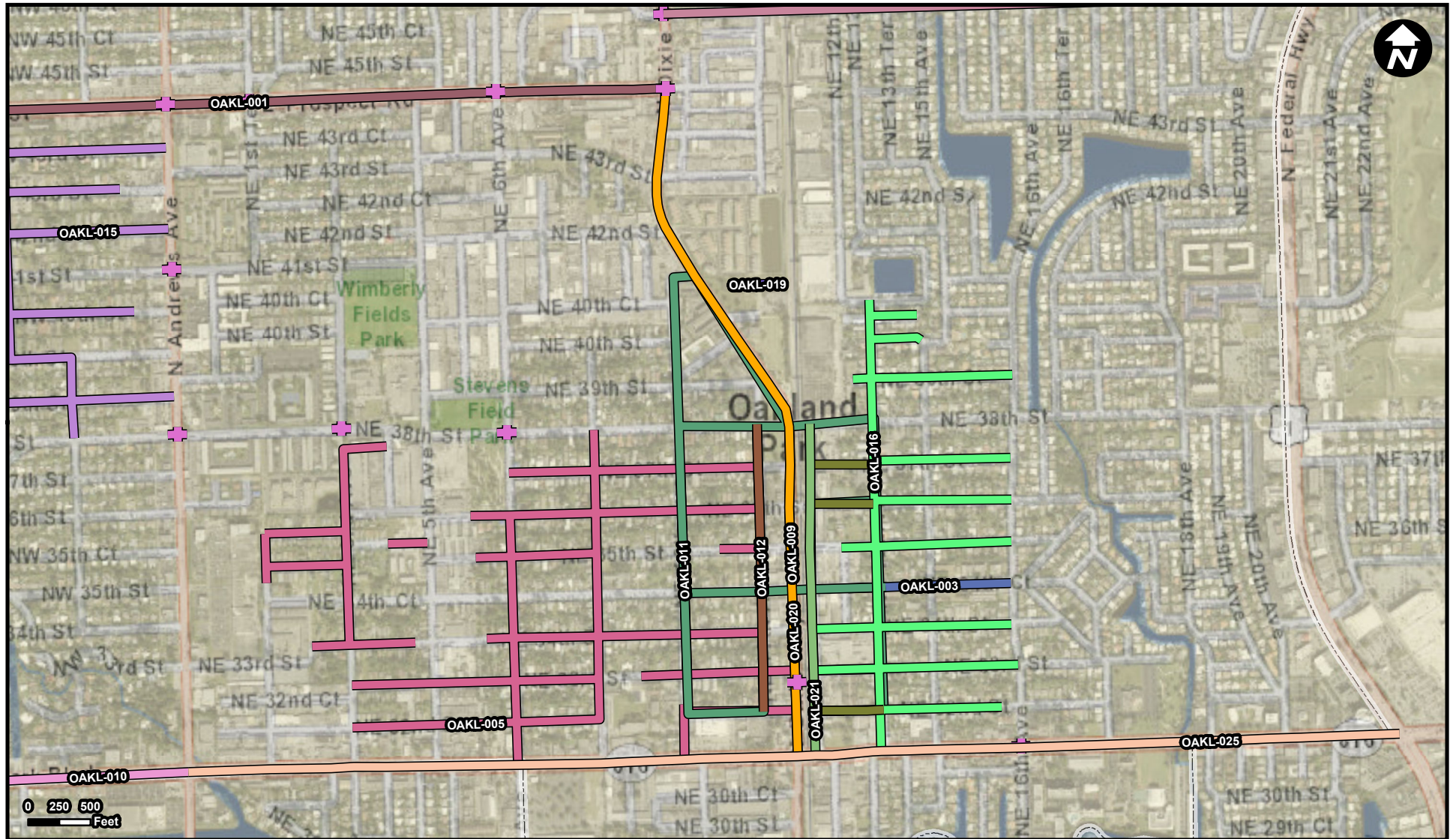
From Dixie Highway to NE 40 Ct In support of the proposed Coastal Link, the City requests funding for the construction of a multi-level parking structure for the City's downtown Transit and future railway station.

FROM:
TO:

Source: Broward Municipal Surtax Projects - BMPO; ESRI Basemap

OAKL-020

Project Name
Dixie Highway Complete Streets



Legend

OAKL-001	OAKL-012	OAKL-021
OAKL-003	OAKL-015	OAKL-023
OAKL-005	OAKL-016	OAKL-025
OAKL-009	OAKL-018	OAKL-026
OAKL-010	OAKL-019	Municipality
OAKL-011	OAKL-020	Unincorporated

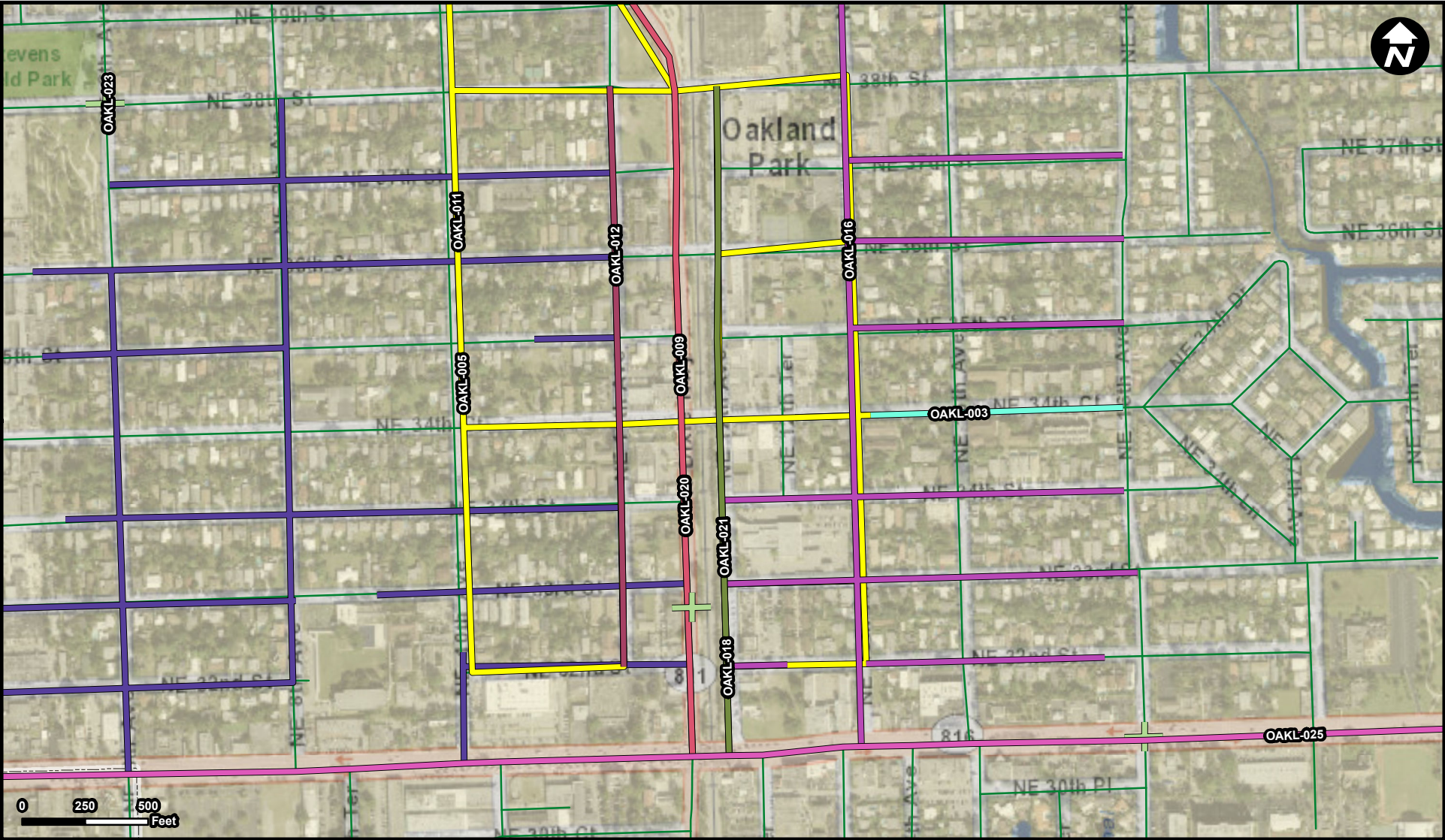
Suggested Work Mix: Bicycle Pedestrian Infrastructure
Primary Work Mix: Safety Project
Secondary Work Mix: Bike Lane Sidewalk

Project Description & Project Scope

From Oakland Park Blvd to Prospect Rd. Corridor upgrades using complete streets to enhance safety for pedestrians, cyclists, motorists, and public transportation users. Enhance pedestrian crossings across Dixie Highway and the FEC

Enhance pedestrian crossings across Dixie Highway and the FEC, while adding multimodal forms of transportation.

FROM: Oakland Park Blvd
TO: Prospect Rd



Legend

OAKL-003	OAKL-018	Unincorporated
OAKL-005	OAKL-020	
OAKL-009	OAKL-021	
OAKL-011	OAKL-023	
OAKL-012	OAKL-025	
OAKL-016	Municipality	

Suggested Work Mix: Bicycle Pedestrian Infrastructure
Primary Work Mix: Bike Lane Sidewalk
Secondary Work Mix: Safety Project

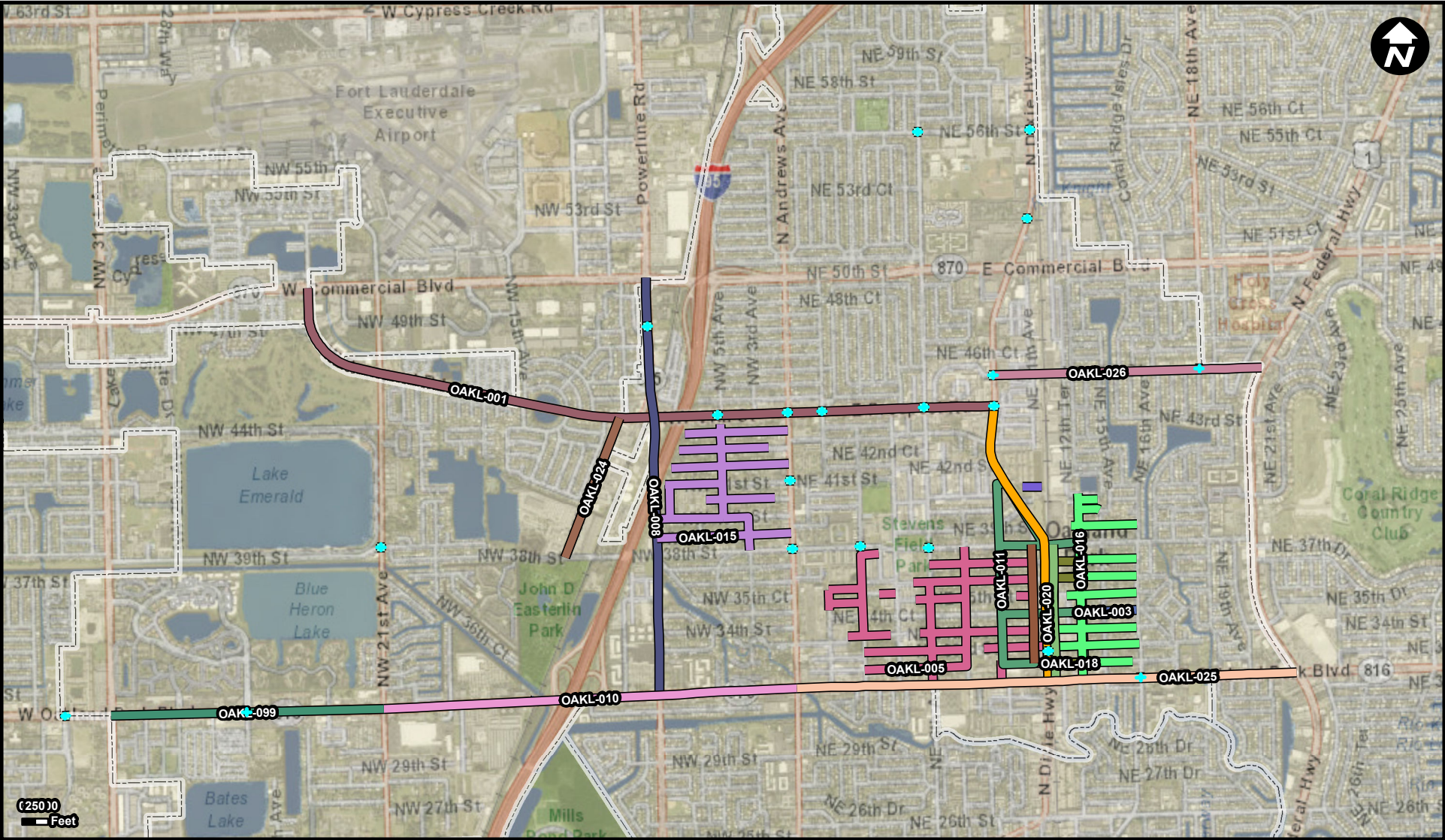
Project Description & Project Scope

Bicycle/Pedestrian Main Street along NE 12 Ave from NE 38th Street to Oakland Park Boulevard. The project includes a redesign of the current roadway to convert the roadway into a multi-modal and pedestrian friendly corridor.

Bicycle/Pedestrian Main Street along NE 12 Ave from NE 38th Street to Oakland Park Boulevard.

FROM: NE 38th Street
TO: Oakland Park Blvd

OAKL-023



Legend

OAKL-001	OAKL-010	OAKL-019	OAKL-026
OAKL-003	OAKL-011	OAKL-020	OAKL-099
OAKL-005	OAKL-012	OAKL-021	Municipality
OAKL-007	OAKL-015	OAKL-023	Unincorporated
OAKL-008	OAKL-016	OAKL-024	
OAKL-009	OAKL-018	OAKL-025	

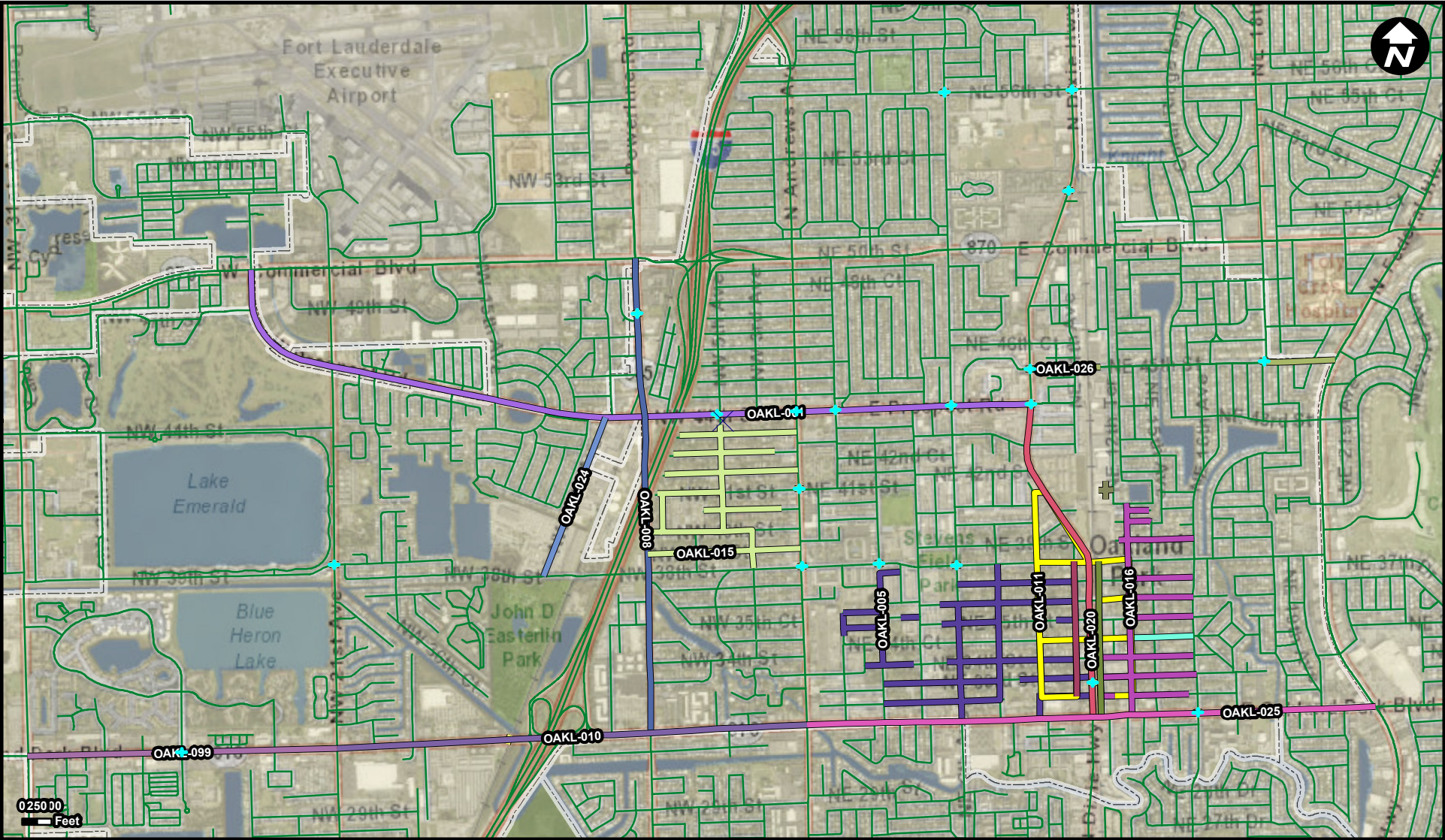
Suggested Work Mix: Signal Enhancement
Primary Work Mix: Traffic Signals
Secondary Work Mix: Safety Project

Project Description & Project Scope

20 signalized intersections throughout the City

20 signalized intersections throughout the City

FROM:
TO:



Legend

OAKL-001	OAKL-010	OAKL-019	OAKL-026
OAKL-003	OAKL-011	OAKL-020	OAKL-099
OAKL-005	OAKL-012	OAKL-021	
OAKL-007	OAKL-015	OAKL-023	Municipality
OAKL-008	OAKL-016	OAKL-024	Unincorporated
OAKL-009	OAKL-018	OAKL-025	

Suggested Work Mix: Signal Enhancement

Primary Work Mix: Traffic Signals

Secondary Work Mix: Safety Project

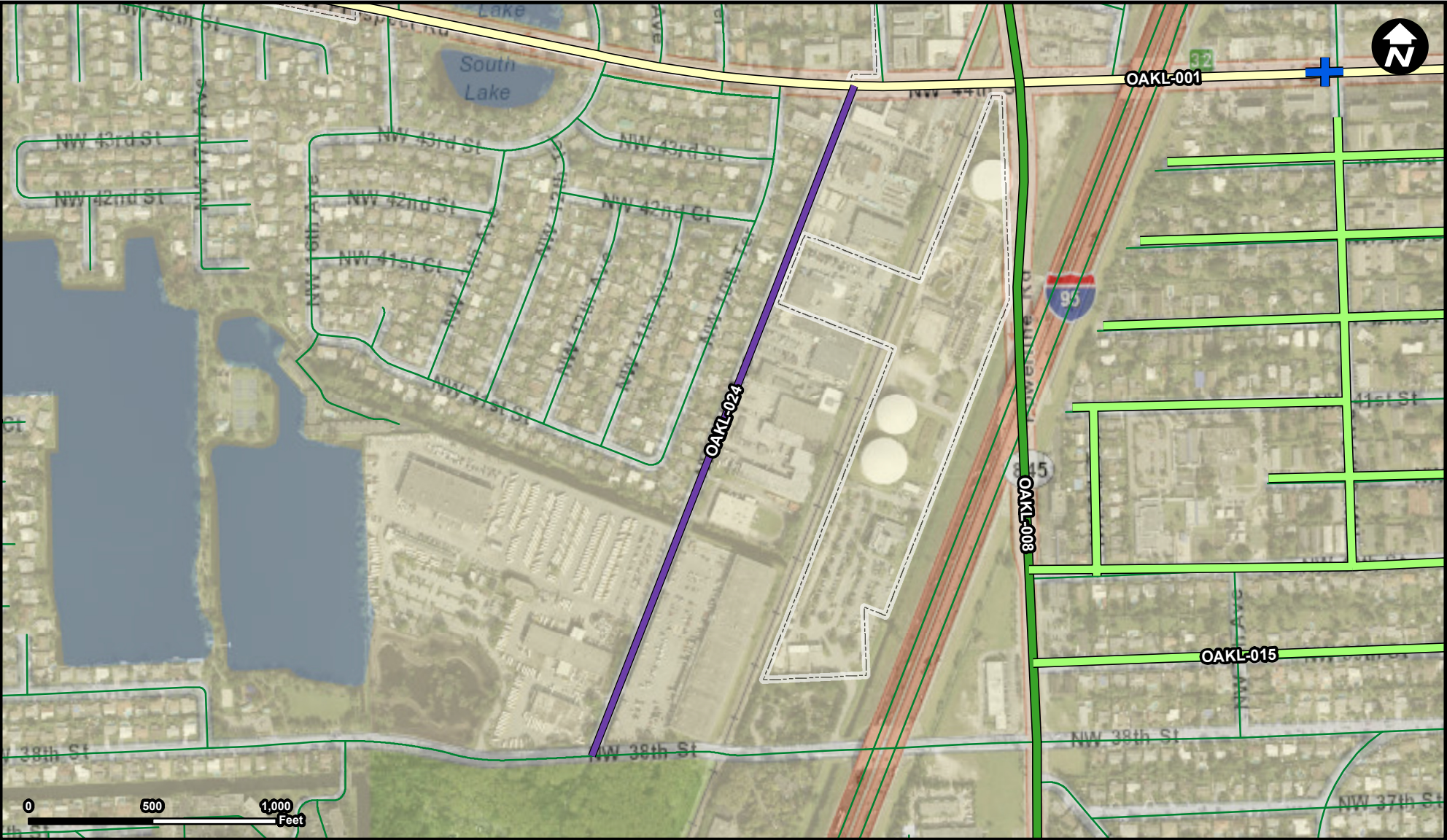
Project Description & Project Scope

20 signalized intersections throughout the City

20 signalized intersections throughout the City

FROM:

TO:



Legend

- OAKL-001
- OAKL-008
- OAKL-015
- OAKL-023
- OAKL-024
- Municipality
- Unincorporated

Suggested Work Mix: Bicycle Pedestrian Infrastructure
Primary Work Mix: Bike Lane Sidewalk
Secondary Work Mix: Safety Project

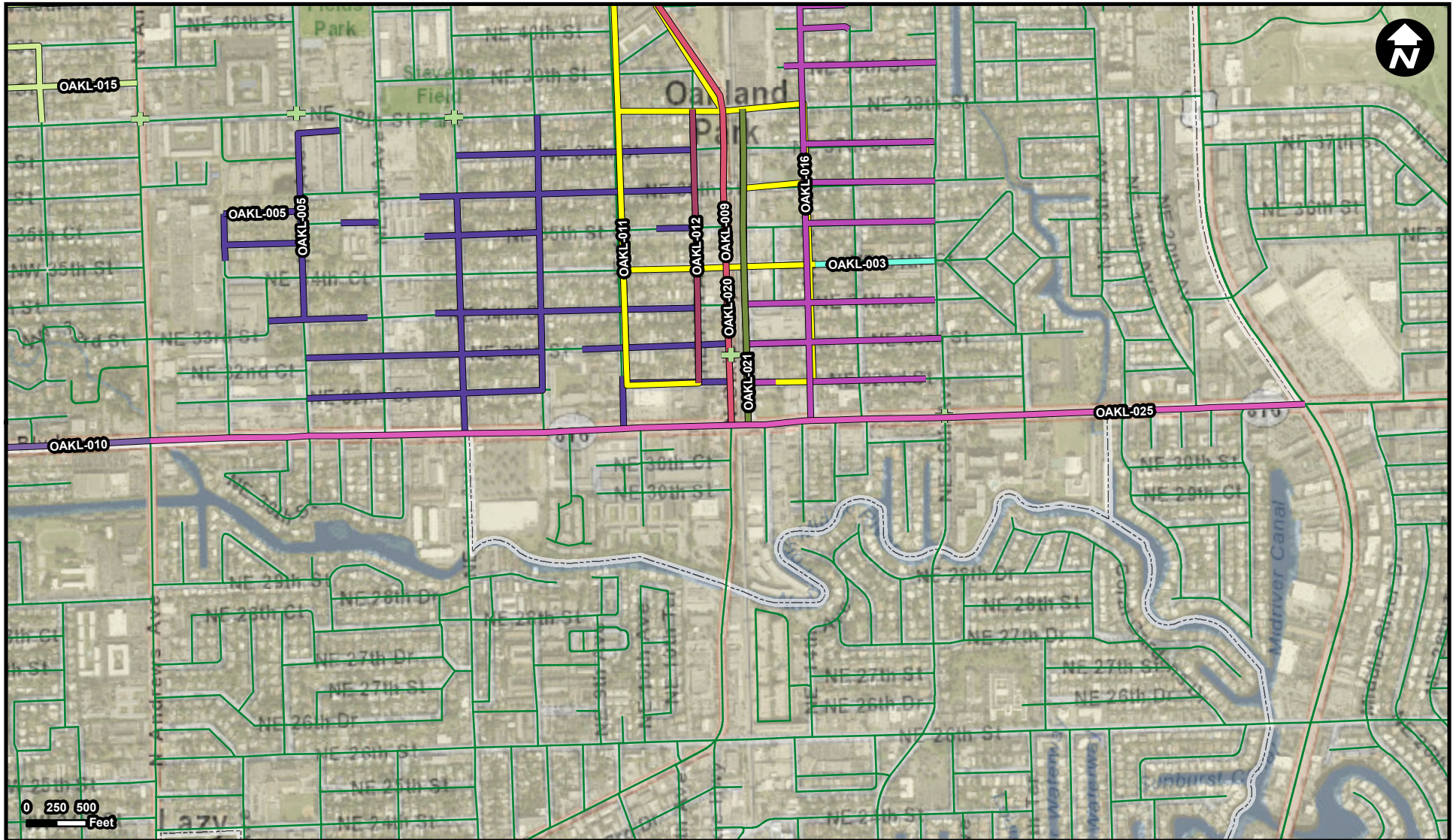
Project Description & Project Scope

"NW 10 Ave from Park Lane West to Prospect Rd. Roadway, solid green 4' bike lanes, sidewalks, lighting, landscape improvements and drainage improvements."
Streetscape and improvement project from Park Lane West to Prospect Rd. Roadway, installation of solid green 4' bike lanes, sidewalks, lighting, landscape improvements and drainage improvements.

FROM: Park Lane West
To: Prospect Road

OAKL-025

Project Name
Oakland Park Blvd Gateway



Legend

-
- Legend for Oakleaf Lake (OAKL) water bodies:
- OAKL-003
 - OAKL-005
 - OAKL-009
 - OAKL-010
 - OAKL-011
 - OAKL-012
 - OAKL-015
 - OAKL-016
 - OAKL-018
 - OAKL-020
 - OAKL-021
 - OAKL-023
 - OAKL-025
- Municipality (dashed box)
- Unincorporated (solid grey box)

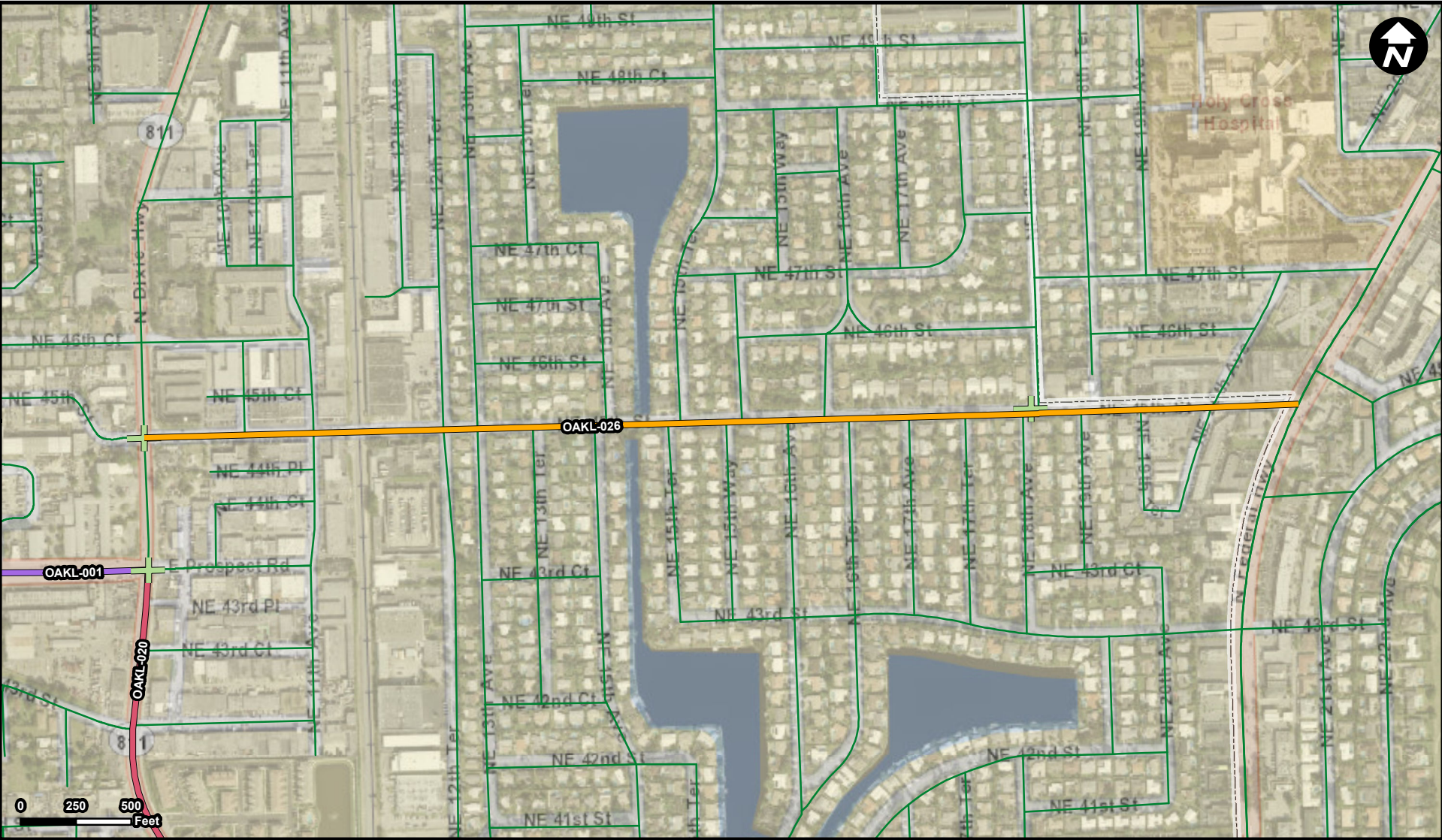
Suggested Work Mix: Landscaping, Hardscape, Signage
Primary Work Mix: Transit Improvement
Secondary Work Mix: Signing/Pavement

FROM: Andrews Avenue
TO: Federal Highway

Project Description & Project Scope

Gateway Design for Oakland Park Blvd from Andrews Ave to Federal Highway. Project is in partnership with the City of Wilton Manors.

Gateway Design for Oakland Park Blvd from Andrews Ave to Federal Highway. Project is in partnership with the City of Wilton Manors.



Legend

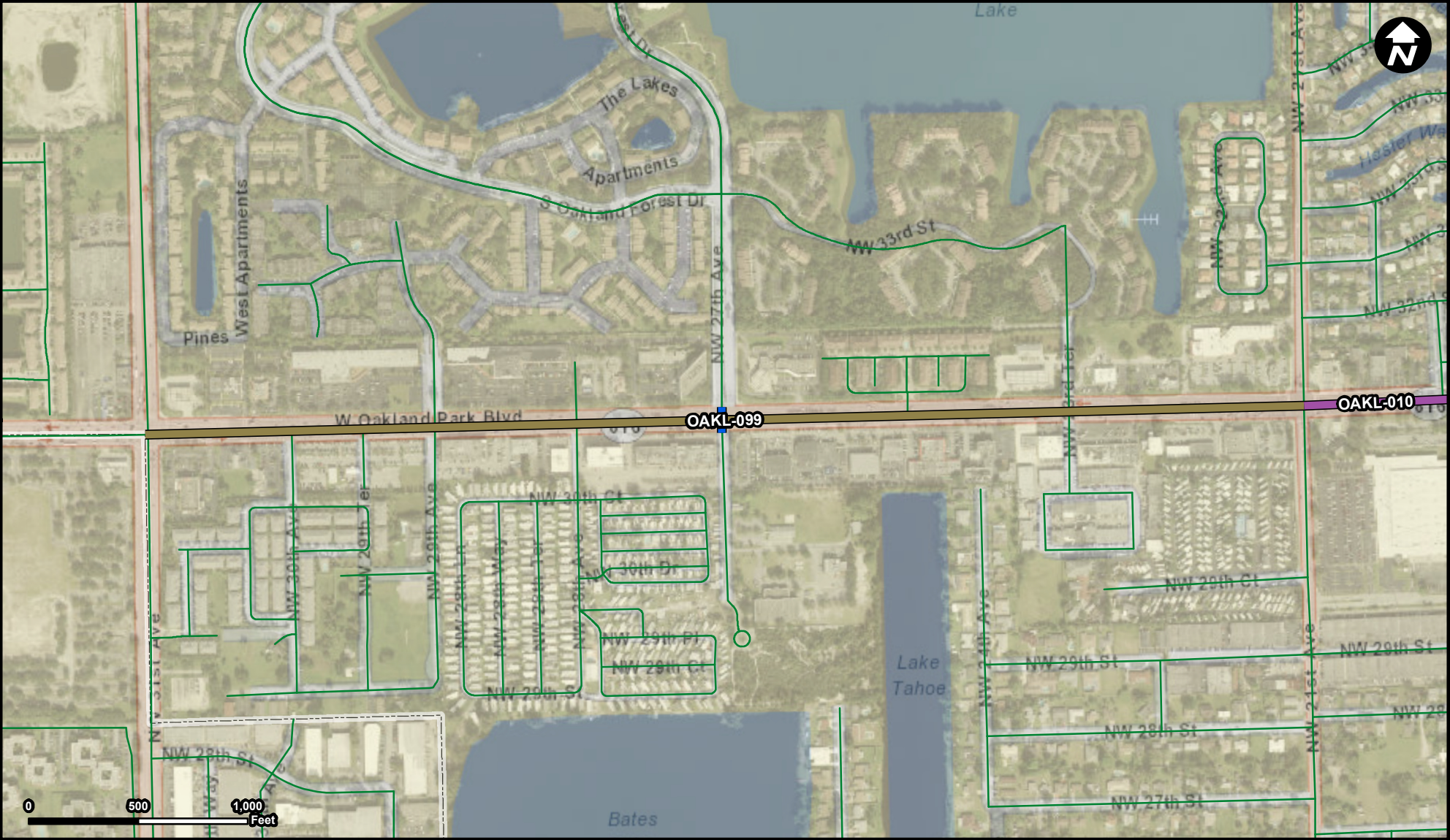
- OAKL-001
- OAKL-020
- OAKL-023
- OAKL-026
- Municipality
- Unincorporated

Suggested Work Mix: Bicycle Pedestrian Infrastructure
Primary Work Mix: Bike Lane Sidewalk
Secondary Work Mix: Safety Project

Project Description & Project Scope

Floranada Sidewalk Network. Infill of sidewalks from Dixie Highway to Federal Highway. Install 5' concrete sidewalks on each side of the street.

FROM: Dixie Highway
TO: Federal Highway



Legend

- OAKL-010
- OAKL-023
- OAKL-099
- Municipality
- Unincorporated

Suggested Work Mix: Landscaping, Hardscape, Signage
Primary Work Mix:
Secondary Work Mix:

Project Description & Project Scope Oakland Park Blvd West Landscape Improvements on the median of Oakland Park Blvd from NW 31 Ave to NE 21st Ave

FROM: NW 31 Avenue
To: NW 21 Avenue