

Hallandale Beach Transportation Master Plan

Staff Working Group Meeting #1
Project Kick-Off

Agenda

- BMPO / SWG Introductions
- TMP Purpose
- Hallandale Beach TMP: SOW
- Hallandale Beach TMP: Schedule
 - City Staff Roles
 - Next Steps
- Discussion: 5-Year Safety Maps
- Discussion: TMP Vision

Meeting Goals:

- ✓ Introduce TMP to SWG
- ✓ Clarify SWG Roles
- ✓ Start to discuss Hallandale Beach Vision
- ✓ Provide 5-Year Injury Crash Trends

Acronyms

BMPO	B roward M etropolitan P lanning O rg
TMP	T ransportation M aster P lan
SWG	S taff W orking G roup (you!)
SOW	S cope o f W ork

Introductions

City Staff Introductions:

- Name
- Title
- Current transportation activities / responsibilities

MPO Staff:

- Karen Friedman, Senior Planner (TMP Project Manager)
 - FriedmanK@Browardmpo.org
- Andrew Riddle, Community Planning Manager
 - RiddleA@browardmpo.org



Karen Friedman
Senior Planner



Andrew Riddle
Community
Planning Manager

Technical Assistance for TMP: Purpose

Identify community-driven, design-ready *multimodal* transportation projects for up to **six roadways** that are based on best practices

Multimodal projects based on best practices:

- ✓ Speed Management
- ✓ Proven Safety Countermeasures
- ✓ Other best practices for improving comfort, convenience, and connectivity for all roadway users

Multimodal project categories:

- Traffic calming facilities
- Pedestrian facilities and amenities
- Bicycle facilities and amenities
- Transit facilities and amenities
- Safety improvements
- Landscaping and resilience facilities

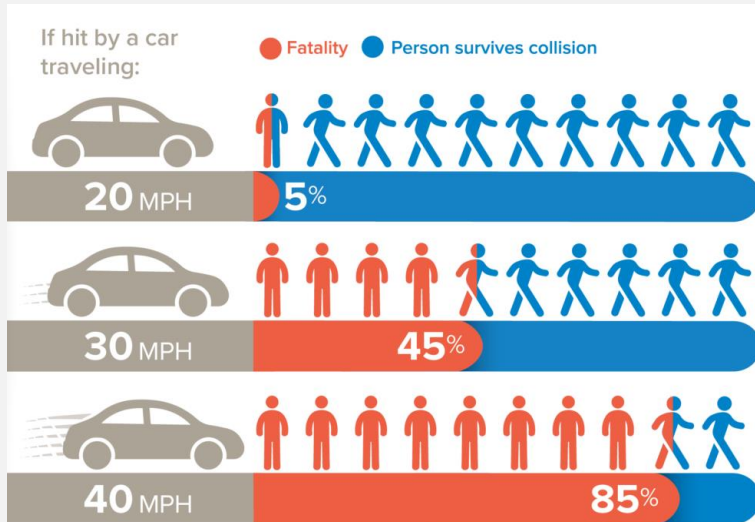
The TMP is *not* intended to:

- Manage roadway congestion
- Assess projects of a scale or complexity that would require a feasibility study

BMPO Technical Assistance:

- Facilitate meetings with city staff, stakeholders, and community members
- Assess and document existing conditions
- Identify and evaluate potential solutions
- Develop planning-level scopes of work and cost estimates
- Prepare conceptual renderings and graphics
- Prepare TMP report

Technical Assistance for TMP: Purpose



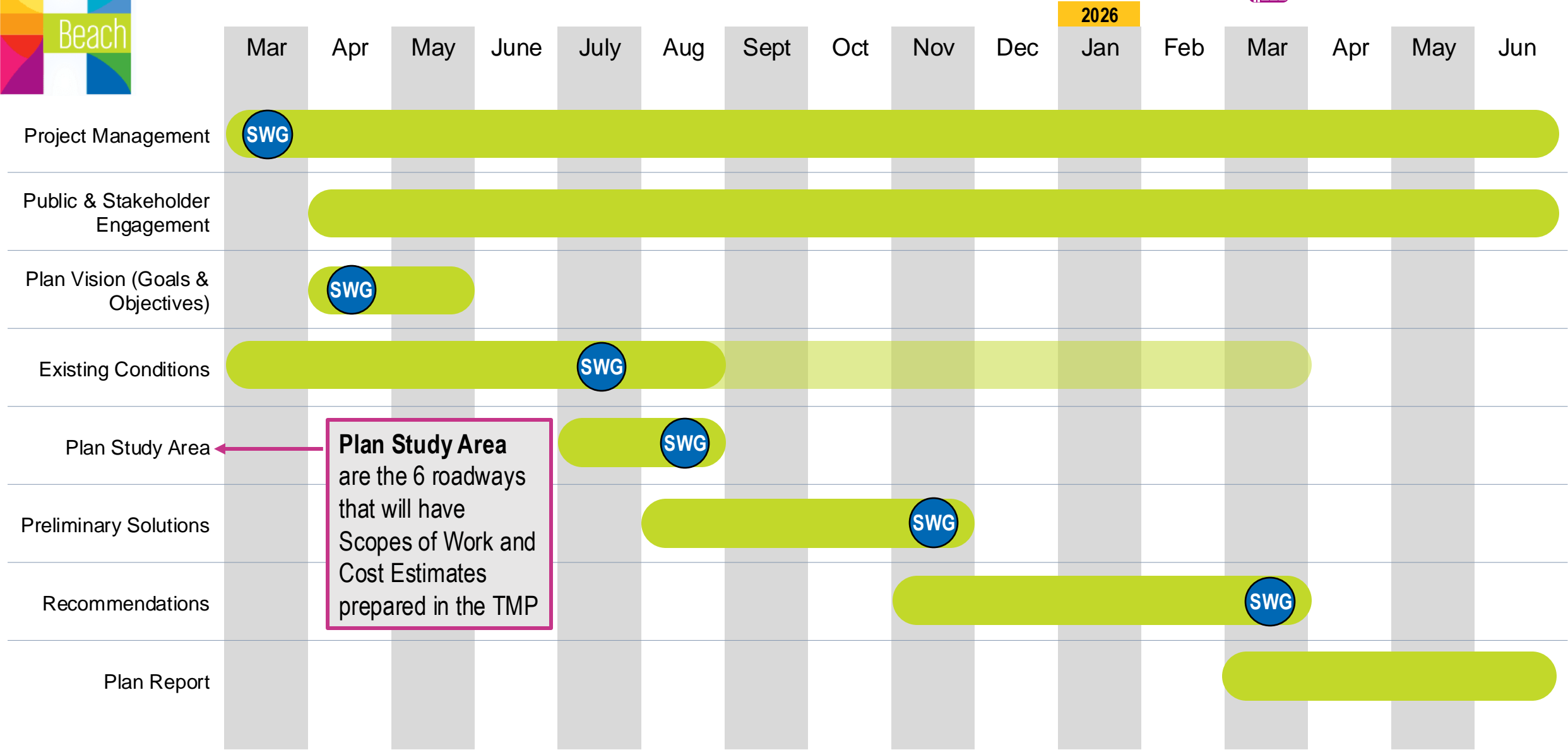
National Traffic Safety Board (2017) Reducing Speeding-Related Crashes Involving Passenger Vehicles. Available from: <https://www.ntsb.gov/safety/safety-studies/Documents/SS1701.pdf>



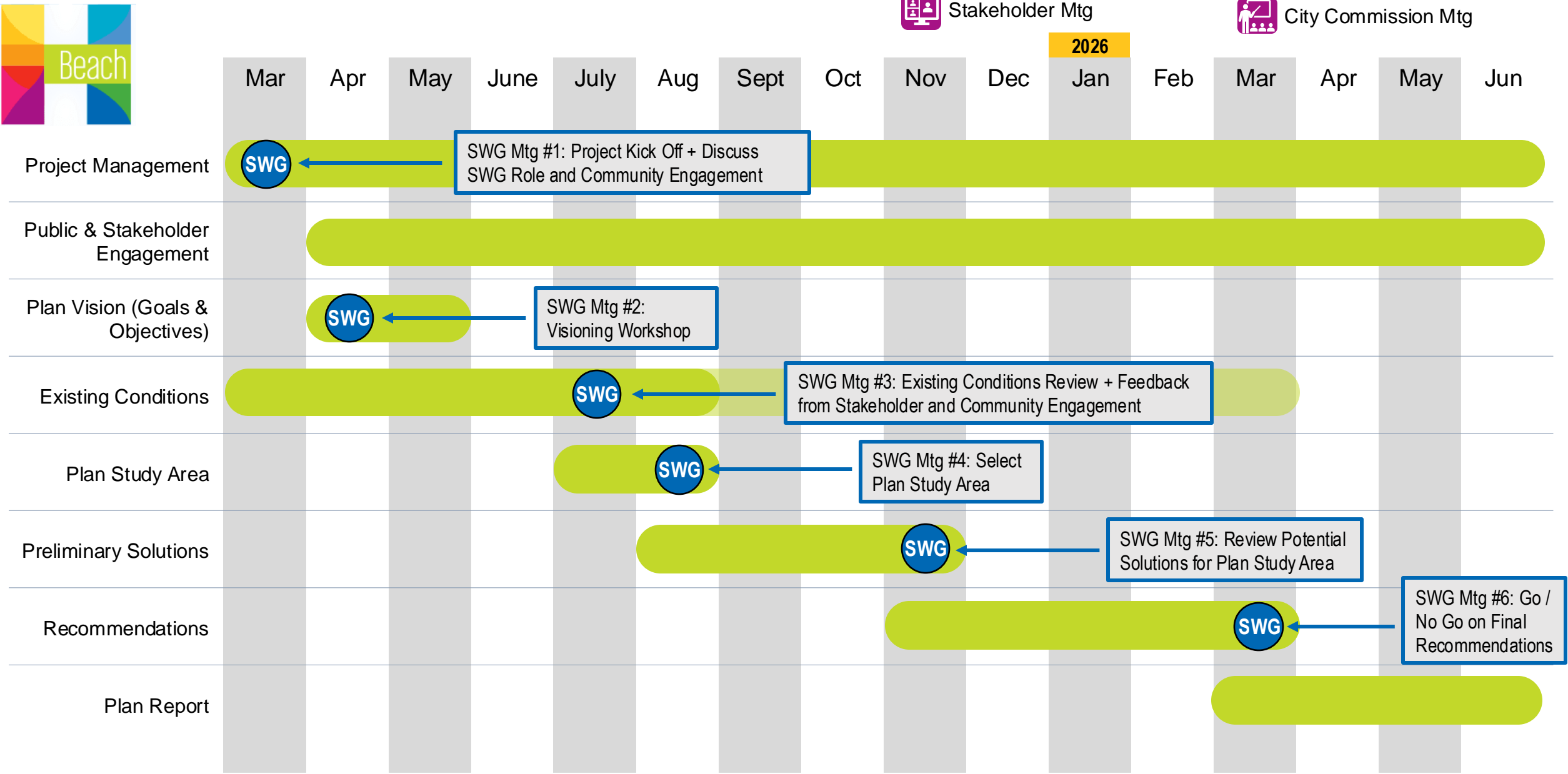
Hallandale Beach TMP: Schedule



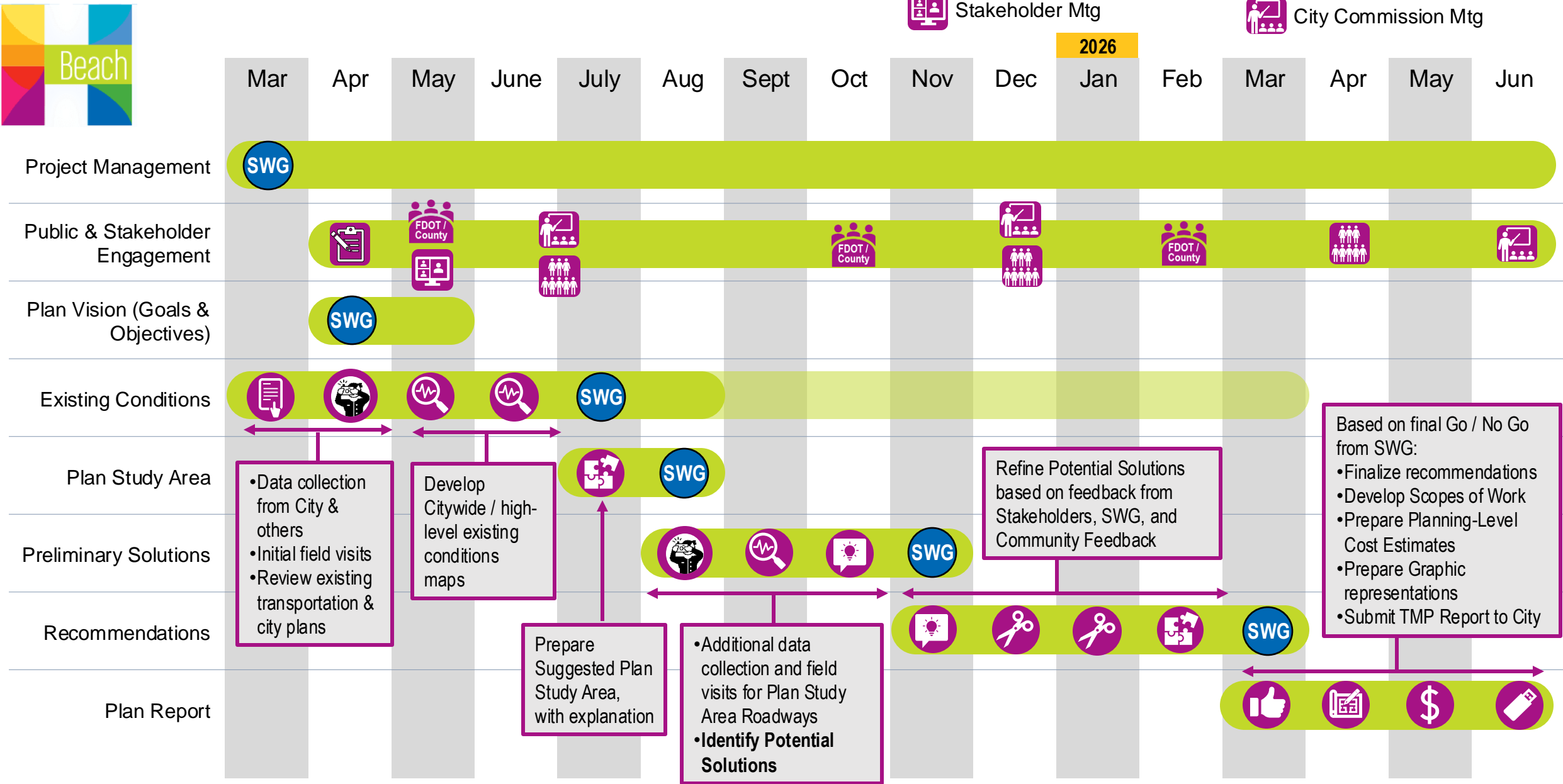
- City Staff Working Group Mtg
- FDOT / Broward County Mtg
- Stakeholder Mtg
- Community Mtg
- Online Survey
- City Commission Mtg



Hallandale Beach TMP: Schedule



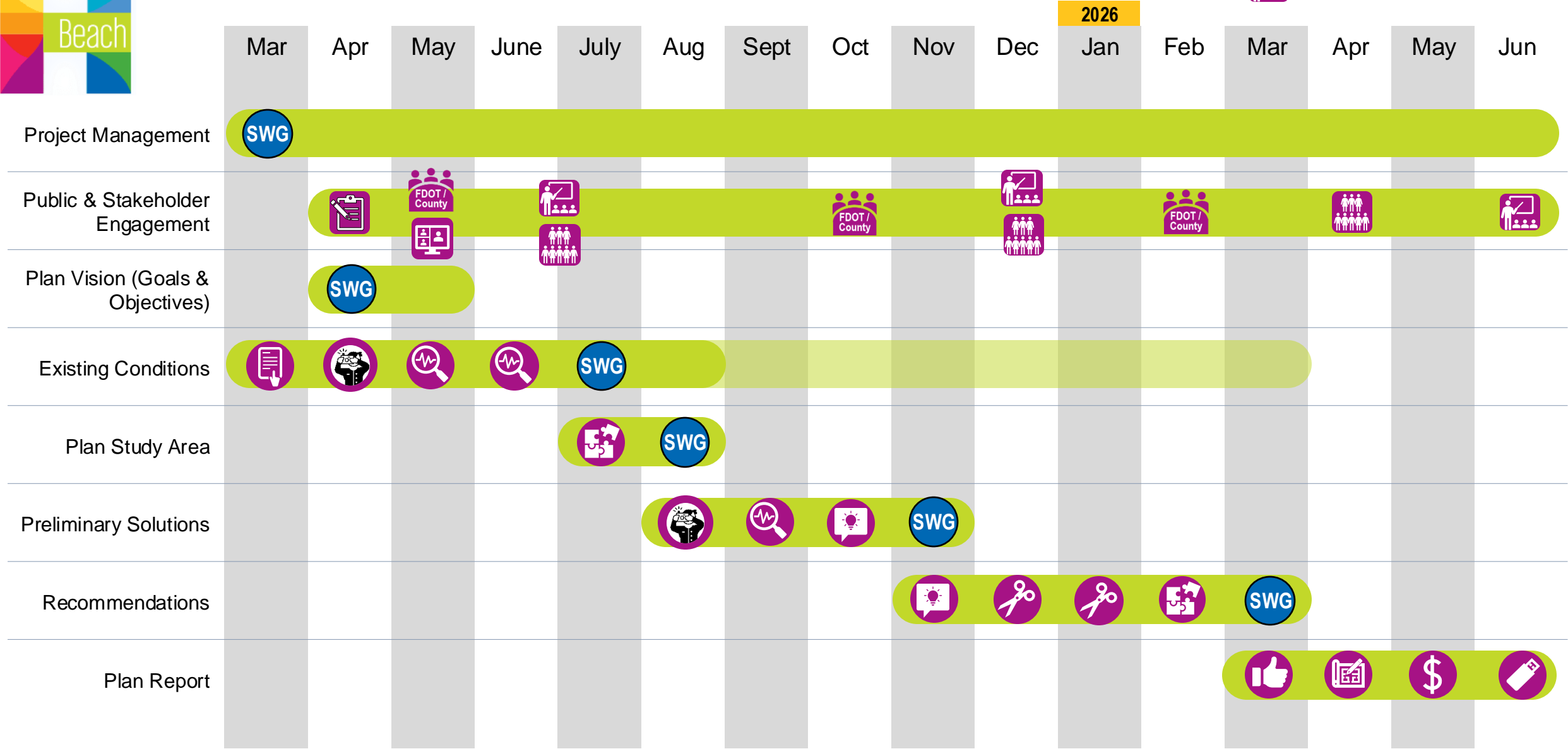
Hallandale Beach TMP: Schedule



Hallandale Beach TMP: Schedule



- City Staff Working Group Mtg
- FDOT / Broward County Mtg
- Stakeholder Mtg
- Community Mtg
- Online Survey
- City Commission Mtg



Hallandale Beach TMP: City Staff Roles

City Staff Roles

1. Schedule Public Engagement events, Provide Venue, & Properly Notice Public Meeting
2. Attend Public Engagement events
3. Promote SurveyMonkey
4. Attend meetings with Stakeholders
5. Provide available data such as prior planning studies, GIS data, traffic counts, etc....
6. Provide comments on TMP Report (or other project submittals)

Initial Public Engagement:

1. Survey Monkey:
 - Community Concerns & priorities (both facility types and specific locations)
 - **April to June**
2. Community Meetings:
 - Community concerns & priorities
 - **Late June or July**

Hallandale Beach TMP: Next Steps



MPO Next Steps

1. Create Hallandale Beach TMP webpage
2. Finalize *initial* Public Engagement plan
 - Prepare SurveyMonkey
3. Schedule / host meetings with FDOT, Broward County, and Broward Schools
4. Data Collection (*Ongoing*)
5. Field Audits near public schools and other high priority locations
6. Prepare Draft Vision Statement and supporting goals (for SWG meeting #2)
7. Monitor other BMPO, County, & FDOT planning efforts in / around Hallandale Beach (*Ongoing*)

City Staff Next Steps

1. Provide Data per data request
- Public Engagement Tasks**
2. Provide list of upcoming community or CRA events
 3. Approve SurveyMonkey questions
 4. Advise if flyer needed for SurveyMonkey
 5. Confirm Community Meeting date(s) and location(s)
 6. Confirm needed outreach to City Commission

Hallandale Beach TMP: Citywide KSI Crash (2020 – 2024)

1/2020 – 12/2024

Killed or Serious Injury (KSI)

Total KSI Crashes = 75

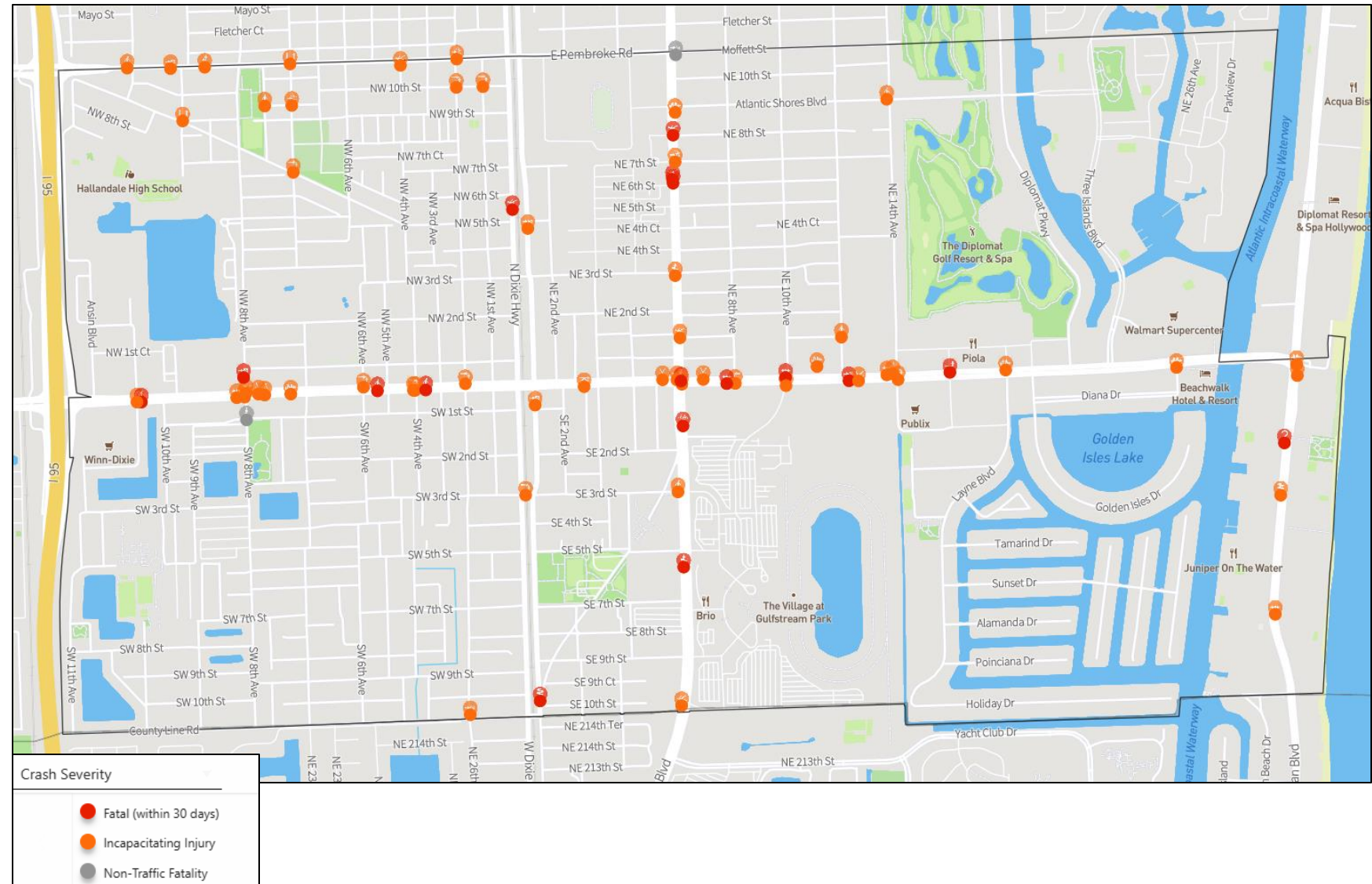
Fatality = 17 Crashes*

Serious Injury = 58 Crashes*

48% occurred at night

Notes:

- * A crash may include more than one person killed or seriously injured
- Crashes exclude I-95, parking lots, driveways, or private roadways
- Crashes by Hallandale Beach Police Dept



Hallandale Beach TMP: Citywide Ped Injury Crash (2020 – 2024)

1/2020 – 12/2024

Total Ped. Injury Crashes = 130

Fatality = 9 Crashes*

Serious Injury = 17 Crashes*

Injury = 104 Crashes*

36% occurred at night

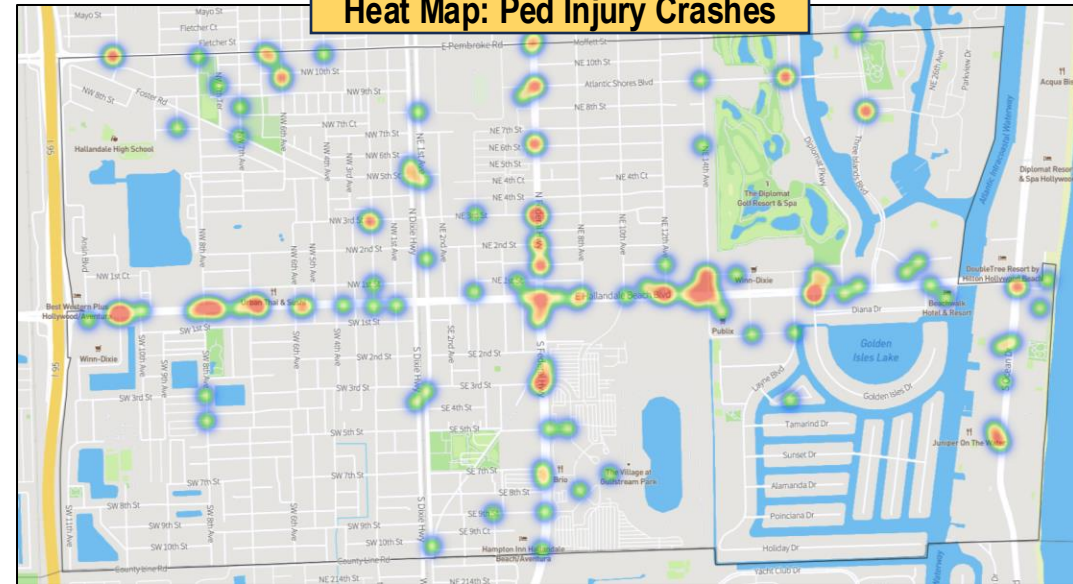
61.5% of Ped KSI occurred at night!

Notes:

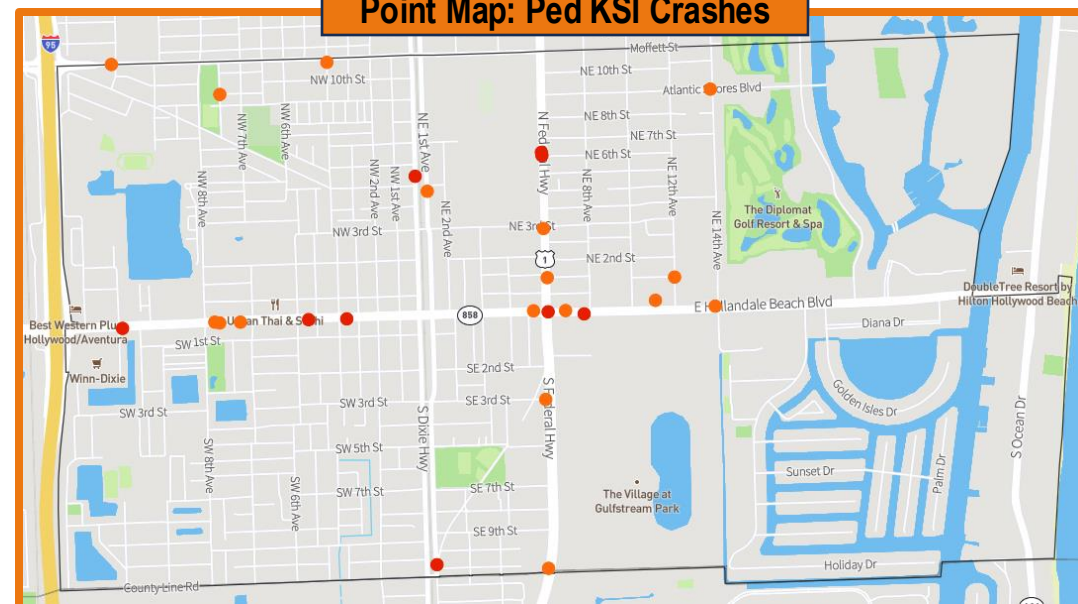
- * A crash may include more than one person injured
- Injury Crashes includes Injury + KSI
- Crashes exclude I-95, parking lots, driveways, or private roadways
- Crashes by Hallandale Beach Police Dept



Heat Map: Ped Injury Crashes



Point Map: Ped KSI Crashes



Hallandale Beach TMP: Citywide Bike Injury Crash (2020 – 2024)

1/2020 – 12/2024

Total Bike Injury Crashes = 130

Fatality = 3 Crashes*

Serious Injury = 6 Crashes*

Injury = 141 Crashes*

20% occurred at night

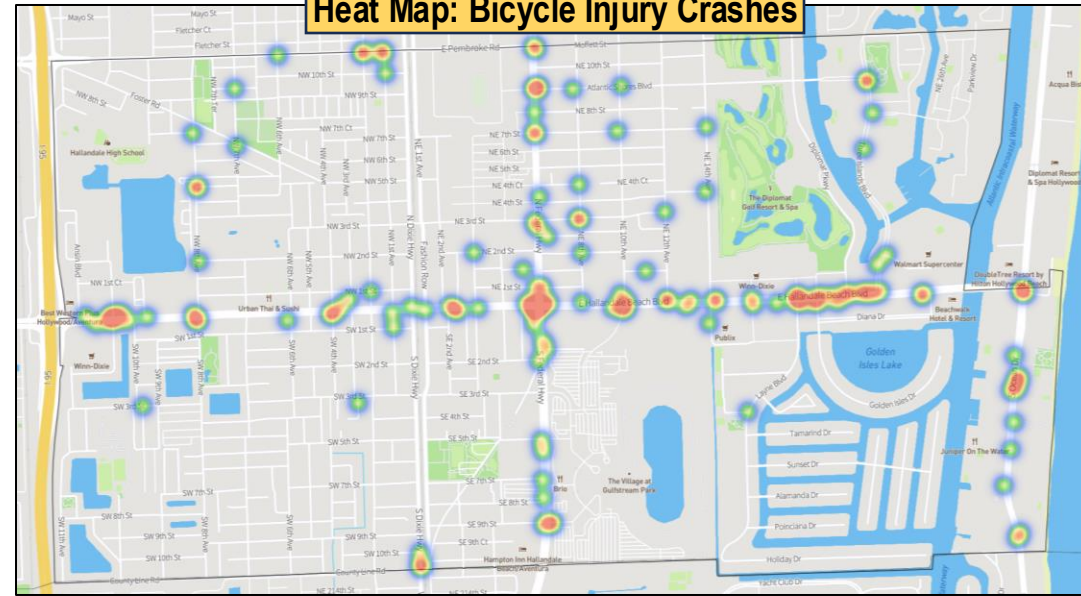
44% of Bike KSI occurred at night!

Notes:

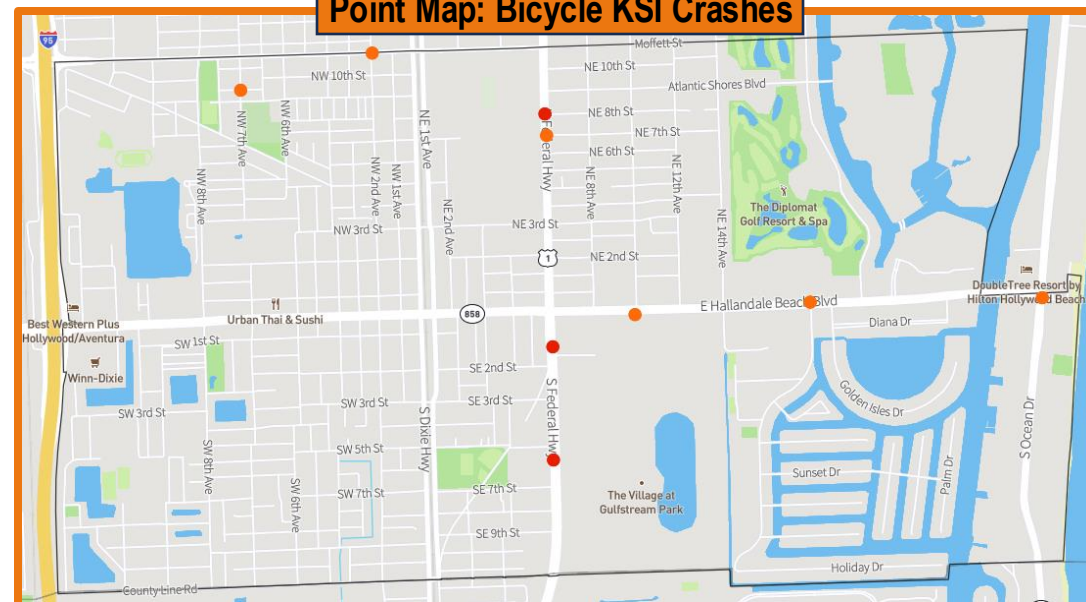
- * A crash may include more than one person injured
- Injury Crashes includes Injury + KSI
- Crashes exclude I-95, parking lots, driveways, or private roadways
- Crashes by Hallandale Beach Police Dept



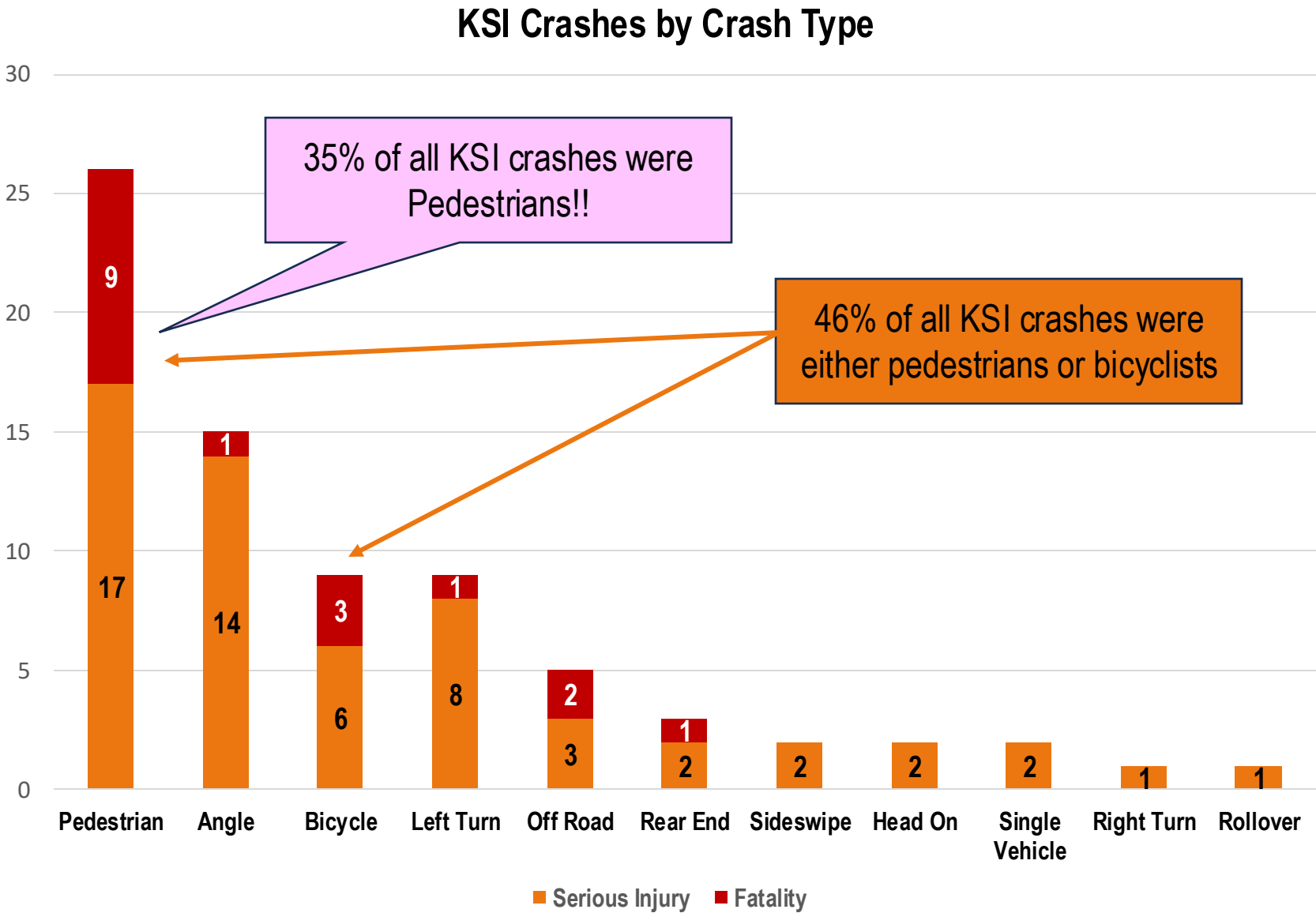
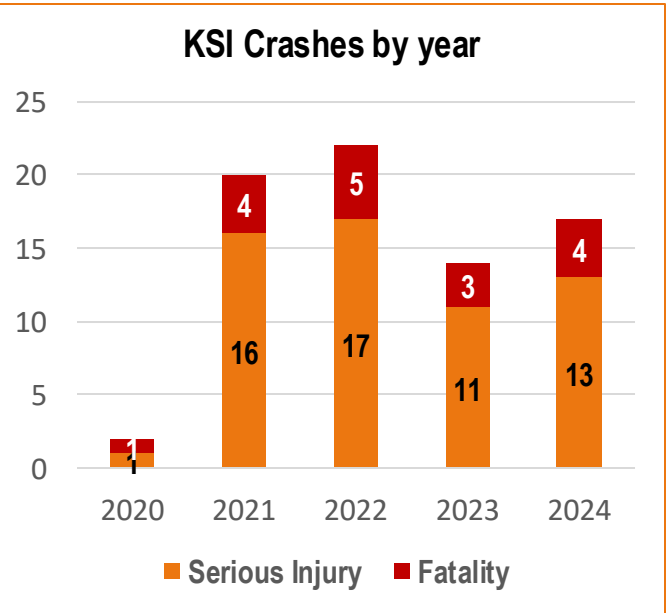
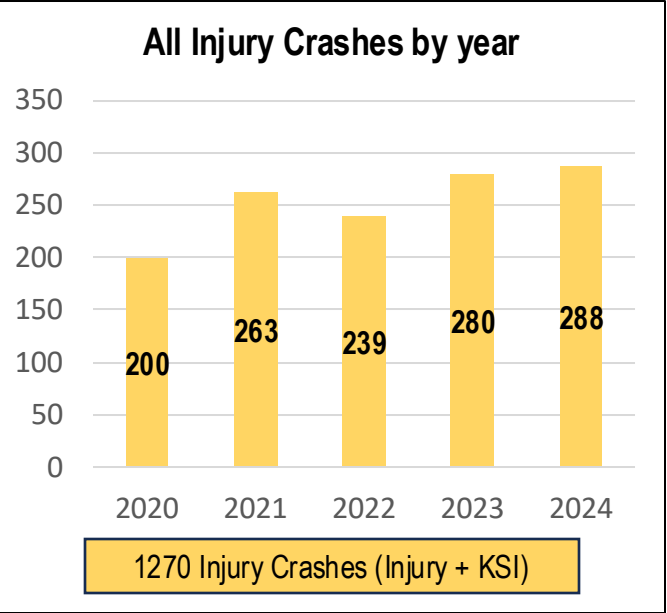
Heat Map: Bicycle Injury Crashes



Point Map: Bicycle KSI Crashes

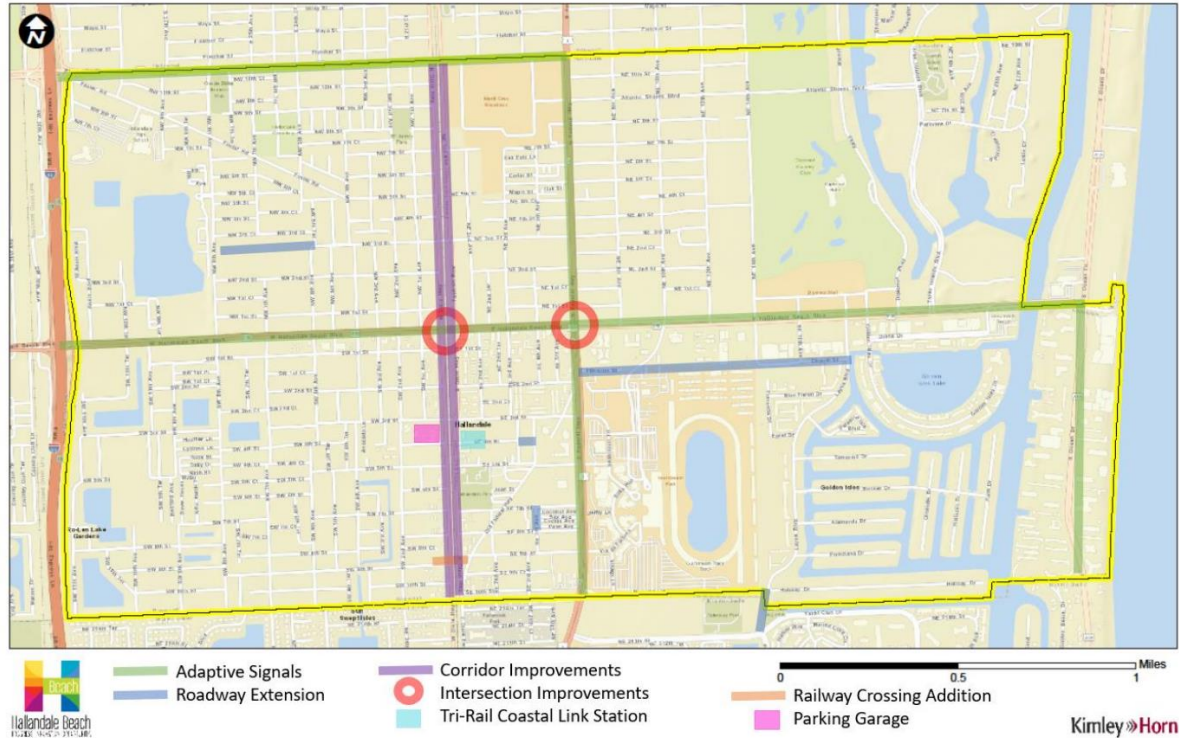


Hallandale Beach TMP: Citywide Injury Crash Trends (2020 – 2024)

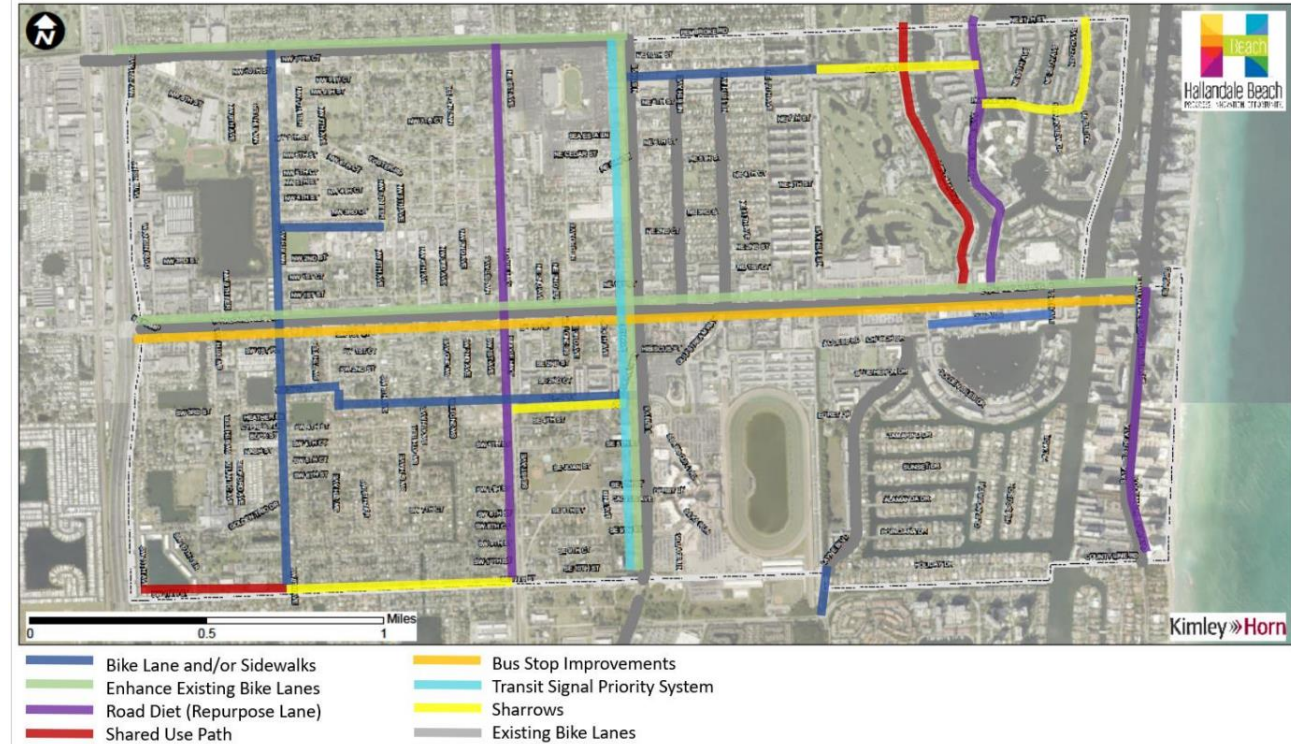


Hallandale Beach TMP: Existing Plans

Suggested Vehicular Improvements



Suggested Multi-Modal Improvements



In general projects focused on reducing traffic congestion, improving roadway connectivity, and adding in missing ped / bike / and transit facilities. Projects did not specifically include speed management or safety countermeasures.

Hallandale Beach TMP: Vision Discussion



Who is walking? **Why** are they walking? **Where** do they walk? What are the **popular destinations**? **What time** are they walking? Where do they **cross the streets**?
What are their **safety and comfort concerns**?



Crossing Federal Highway mid-block



Senior Citizens, walking in roadway



Walking dogs in neighborhood

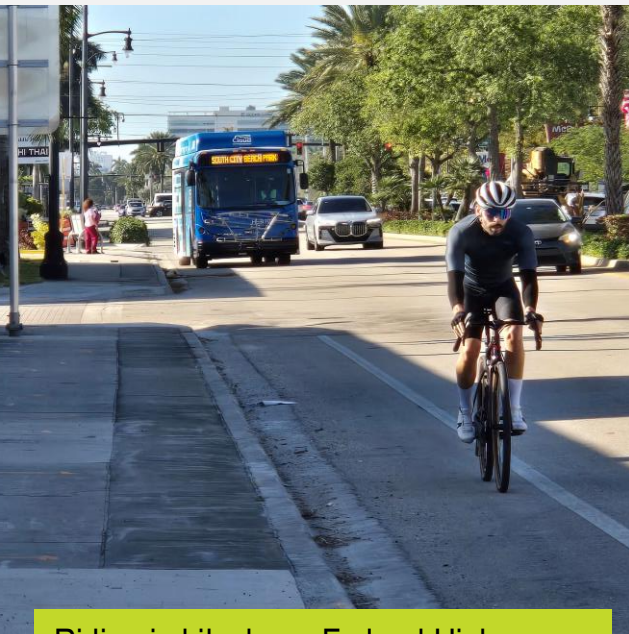


Crossing at designated crosswalk

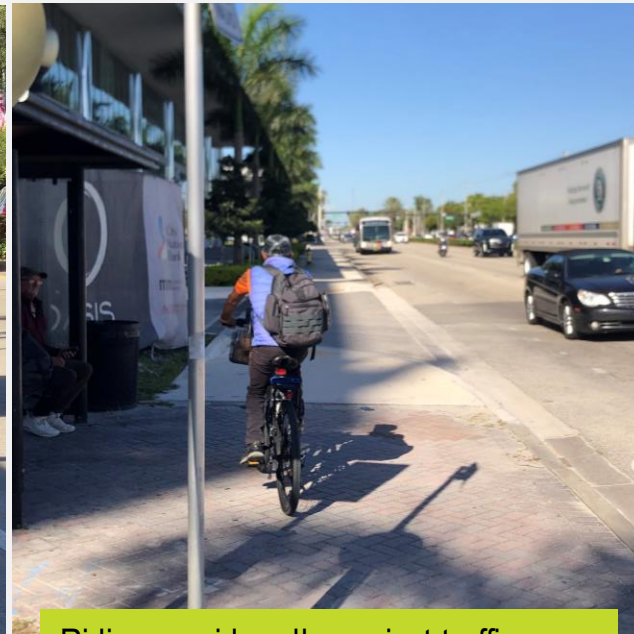
Hallandale Beach TMP: Vision Discussion



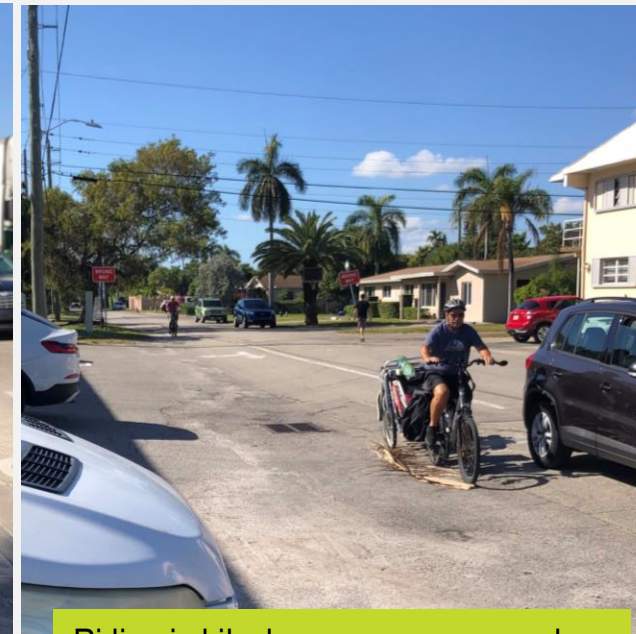
Who is riding bikes or scooters? **Why** are they riding bikes or scooters? **Where** do they ride? What are the **popular destinations**? **What time** are they traveling? Where do they **cross the streets**? What are their **safety and comfort concerns**?



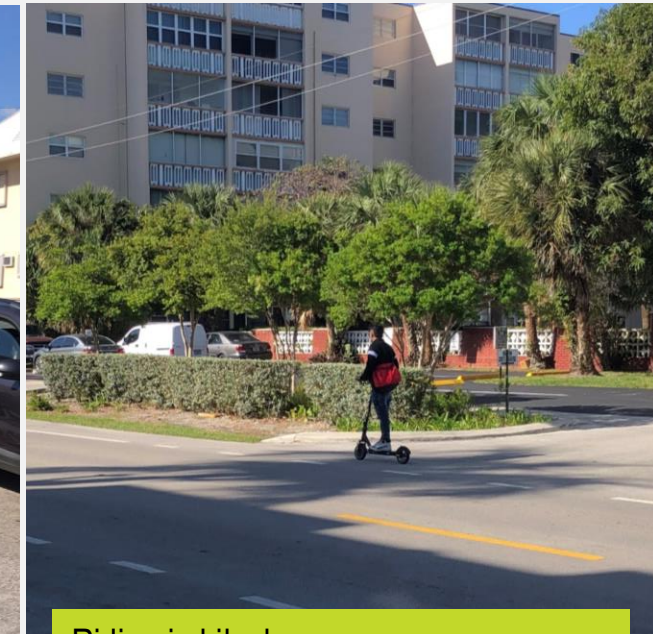
Riding in bike lane, Federal Highway



Riding on sidewalk, against traffic



Riding in bike lane on one-way road



Riding in bike lane

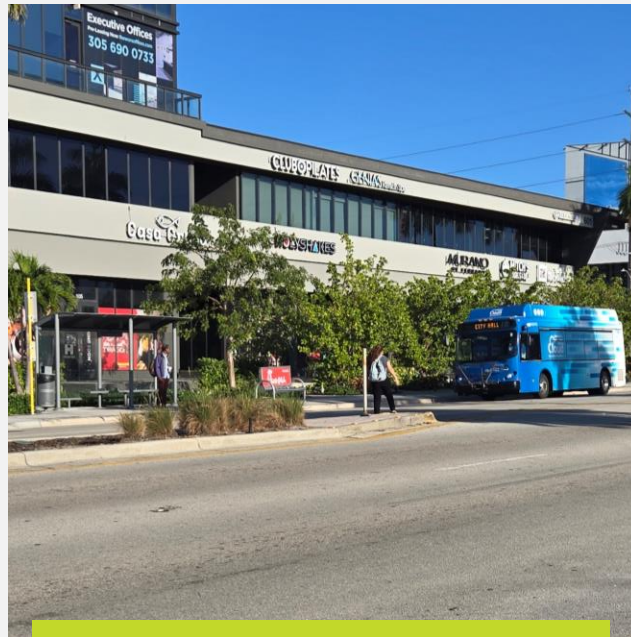
Hallandale Beach TMP: Vision Discussion



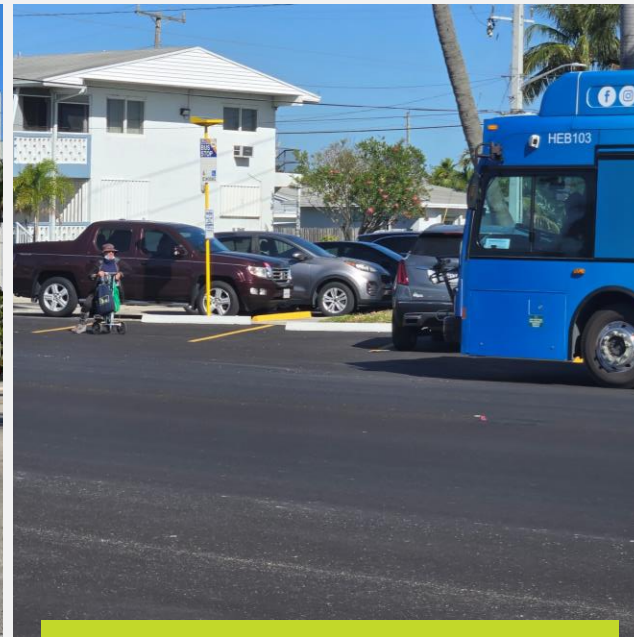
Who is using transit? **How** do they get to / from the transit stop (walk, bike, scoot)? What are the **popular destinations**? **What time** are they traveling? Where do they **cross the streets**? What are their **safety and comfort concerns**?



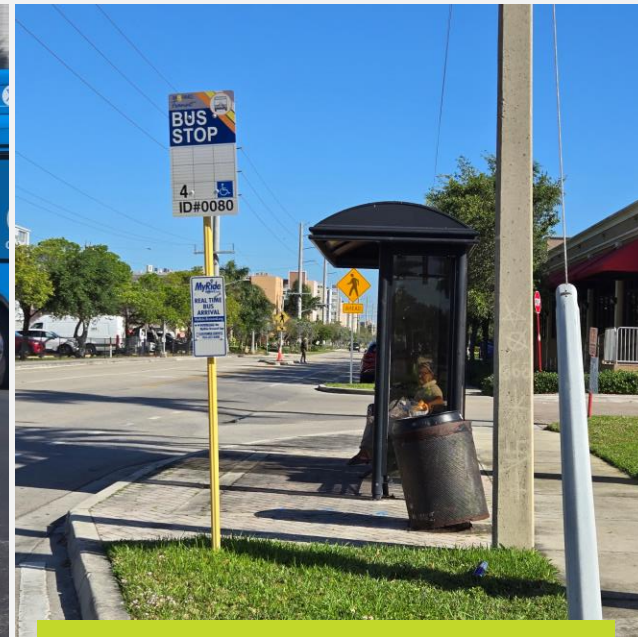
Waiting for bus, Federal Highway



Crossing Federal Hwy to catch Shuttle



Senior Citizen waiting in parking spot



Bus stop near designated crosswalk

Hallandale Beach TMP: Vision – Existing City Plans



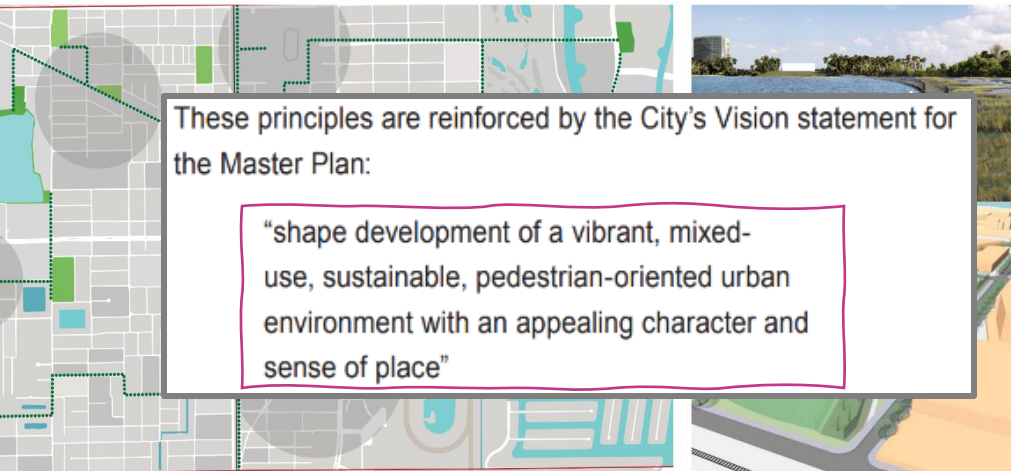
Hallandale Beach
PROGRESS. INNOVATION. OPPORTUNITY.

Mobility Roadmap FINAL REPORT

INTRODUCTION

The City of Hallandale Beach (City) is a dynamic community that is experiencing a surge of development and that has major activity generators, including: Gulfstream Park, Mardi Gras Casino, commercial centers, and beaches. To address ongoing traffic issues and congestion the City has engaged Kimley-Horn to provide direction towards the most beneficial investments in transportation solutions to improve safety, interconnectivity, transportation conditions, and alternative transportation options. The study is aimed at identifying short, mid and long-term improvements and potential funding strategies.

CITY OF HALLANDALE BEACH citywide master plan and implementation strategy



These principles are reinforced by the City's Vision statement for the Master Plan:

"shape development of a vibrant, mixed-use, sustainable, pedestrian-oriented urban environment with an appealing character and sense of place"

Adopted February 2009

Vision & Guiding Principles

The redevelopment plan modification is inspired by the following vision statement:

Hallandale Beach Community Redevelopment Area will be known as a welcoming, safe, progressive, innovative business-friendly and diverse community. The Hallandale Beach Community Redevelopment Agency will focus its resources on eliminating slum and blighted conditions within the redevelopment area by improving the quality of life for its residents, business community and other stakeholders. The HBCRA will become a sustainable and inclusive community for people to live work and play due to its beautiful neighborhoods and outstanding businesses, entertainment, arts and cultural opportunities.

This vision will be achieved through the use of three guiding principles, Compact, Connected and Resilient, each broken down into subsequent goals which were applied throughout the designs proposed for the Hallandale Beach CRA Redevelopment Plan.



The City of Hallandale Beach Progress at the Forefront



Vision Statement

"A cosmopolitan beachside community for progress, innovation, and opportunity that is the first choice in South Florida to live, work, and play."

Mission Statement

"To sustainably grow our community by creating a welcoming, safe, and culturally vibrant City led by a transparent and fiscally responsible government dedicated to fostering trust and enhancing quality of life."