

# Wilton Manors Transportation Master Plan

---

KEY CONCLUSIONS | JULY 05, 2023



# Key Conclusions

Wilton Drive is a major Local and Regional Destination

Some roadways make it difficult to traverse the City and reach destinations

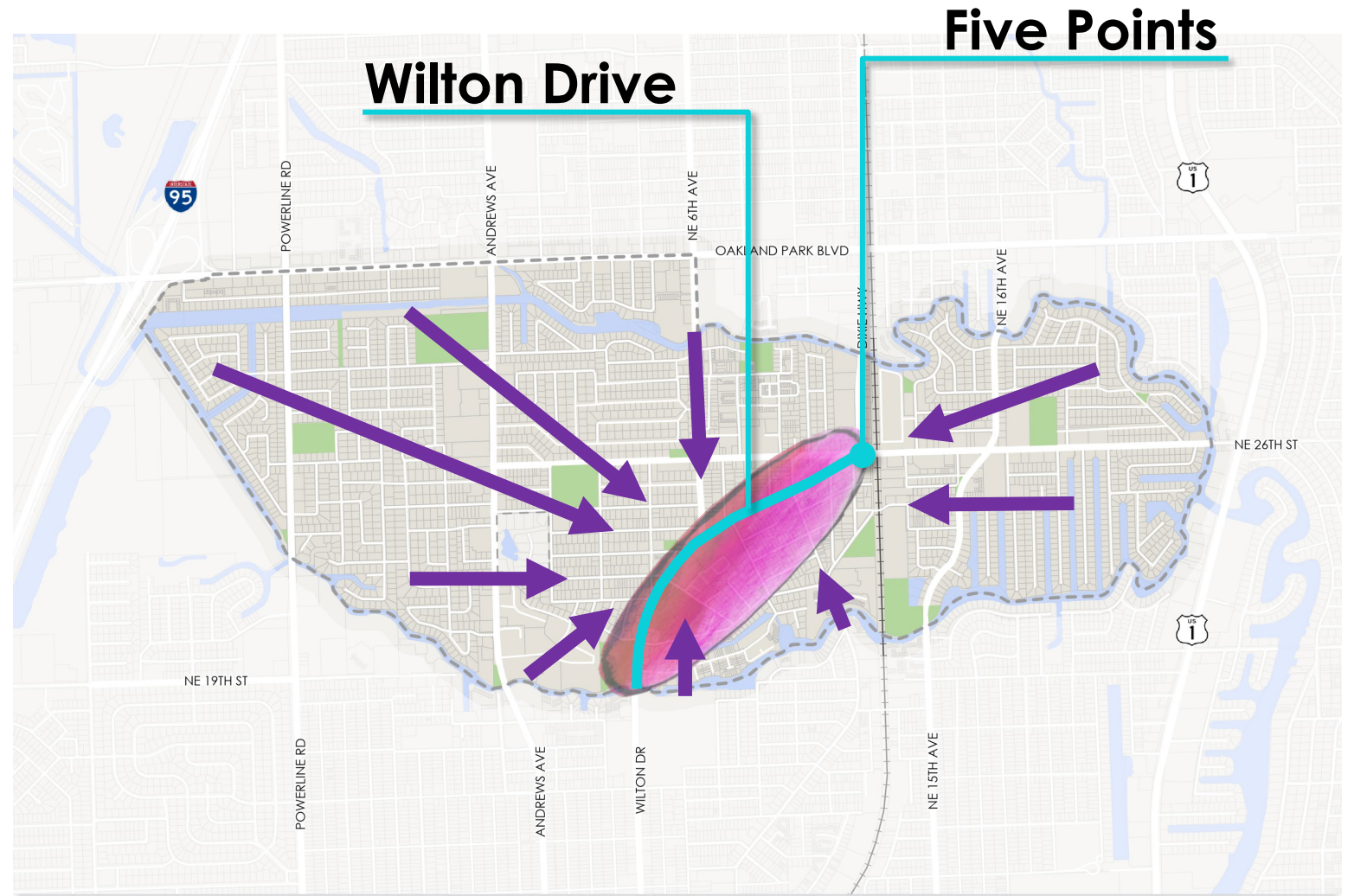
Existing intersections are not comfortable for people walking and biking

Existing walking and biking networks are not comfortable for some users

Limited accessibility for people walking and biking to Wilton Drive

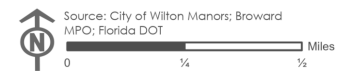
# Destinations

- Wilton Drive is a major local and regional draw from around the City and Region



## LEGEND

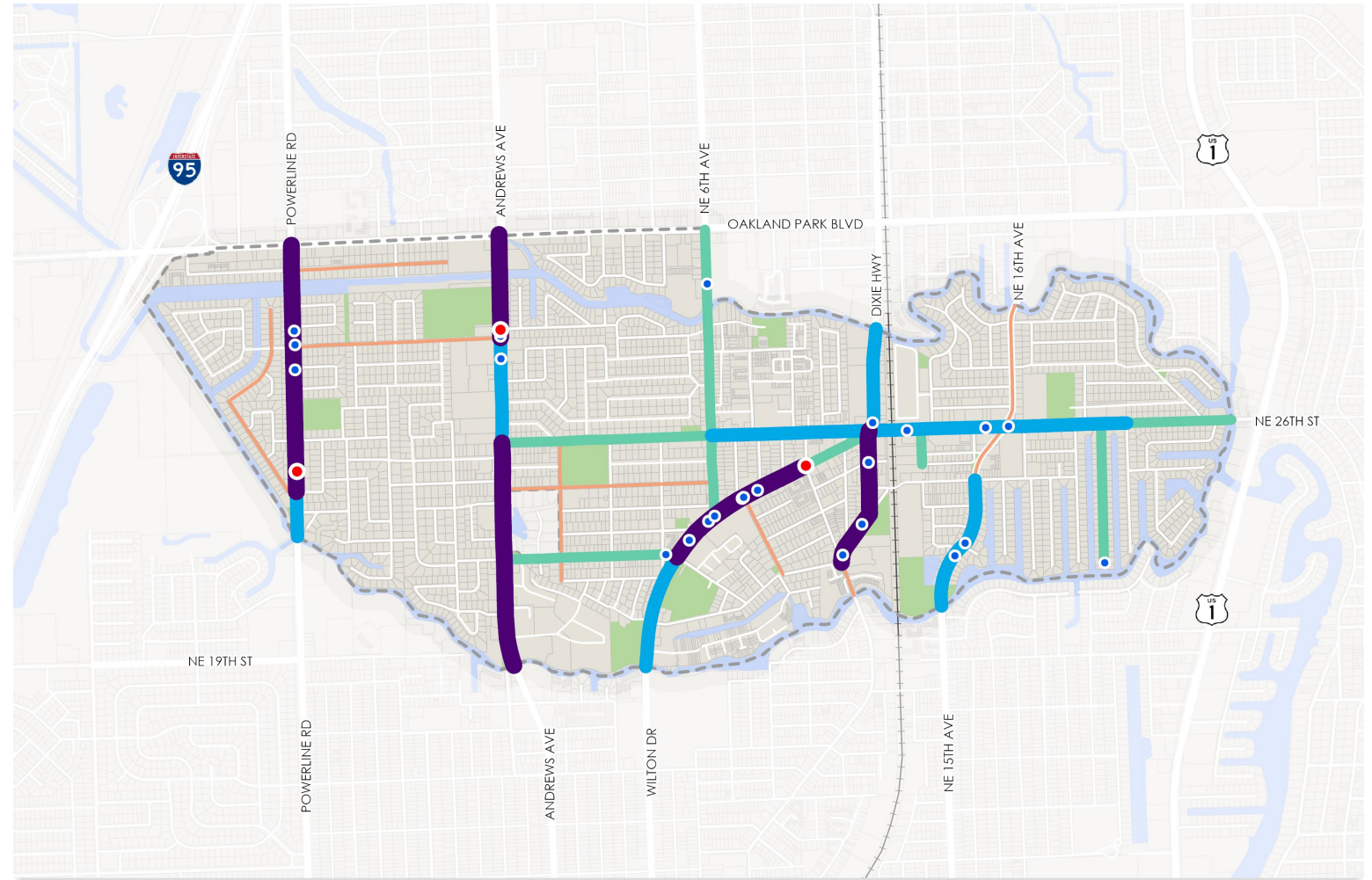
- +— Florida East Coast Railway
- City Park
- - - Wilton Manors Study Area



# Street Safety (2018 - 2022)

- Total Crashes: 1,353
- Crash analysis considers segments with 5 crashes or more
- Weighted Crashes
  - Fatal: 100 points
  - Severe Injury: 75 points
  - Injury: 25 points
  - Non-Injury: 1 point
- Highest crash corridors:
  - Powerline Road
  - Andrews Avenue
  - NE 26<sup>th</sup> Street
  - Wilton Drive
  - NE 15<sup>th</sup> Avenue
  - Dixie Highway

*Note: Crash data is based on police reporting at the scene and not severity as determined by a trained medical professional. For this and other reasons, crashes involving people walking and biking, and particularly reports of injury severity are often underreported.*



## LEGEND

- +— Florida East Coast Railway
- City Park
- - - Wilton Manors Study Area

### Weighted All Crashes Per Mile

- Highest
- 
- 
- Lowest

### Deaths & Serious Injuries

- Death
- Serious Injury

Source: City of Wilton Manors; Broward MPO; Florida DOT

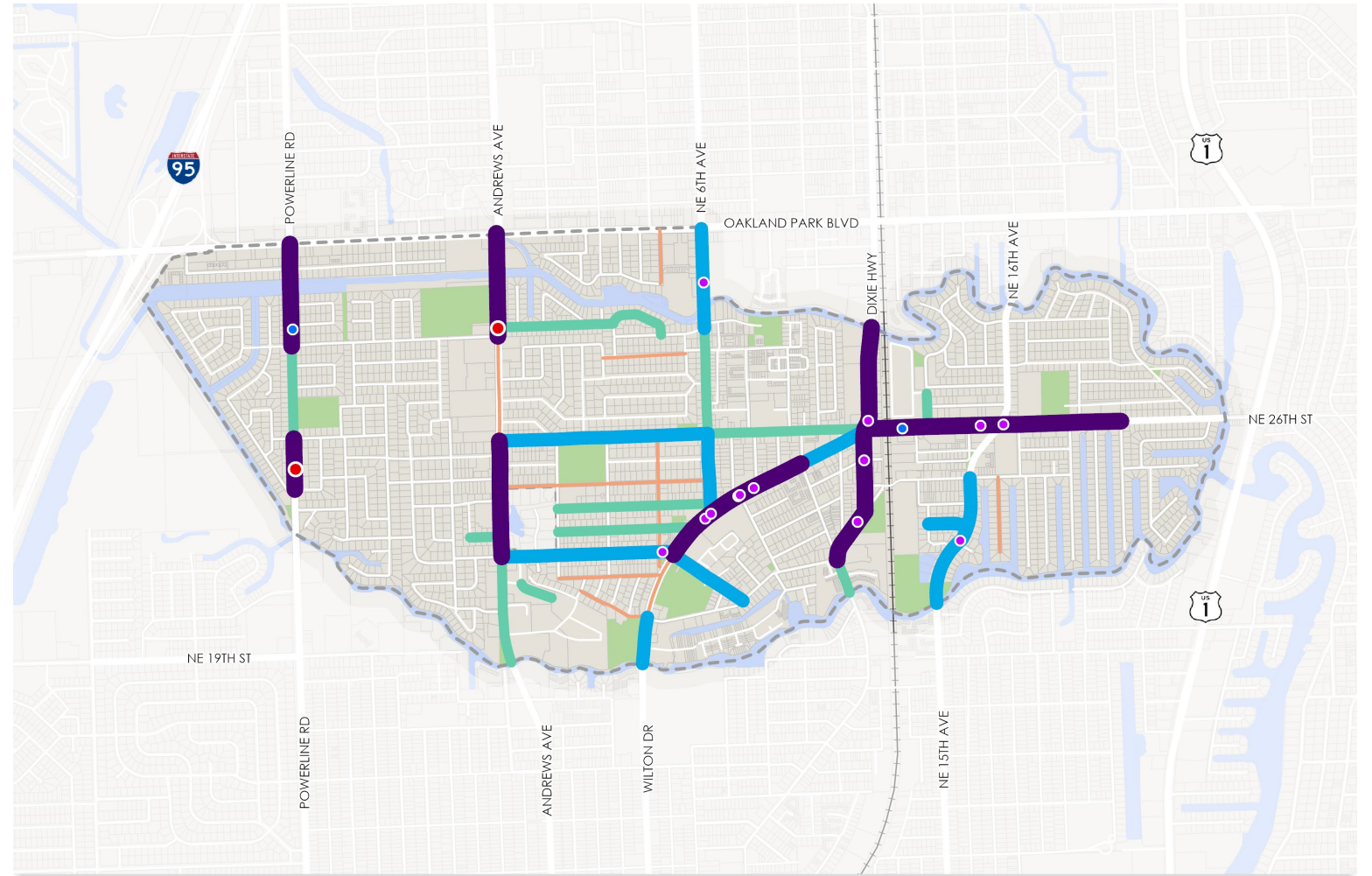


Data Source:  
SignalFour Analytics,  
2018-2022

# Walking & Biking Safety (2018 - 2022)

- Total Crashes: 86
- Weighted Crashes
  - Fatal: 100 points
  - Severe Injury: 75 points
  - Injury: 25 points
  - Non-Injury: 1 point
- East / West Crossings
  - Powerline Road
  - Andrews Avenue
  - Dixie Highway
- North / South Crossings
  - Wilton Drive
  - NE 26<sup>th</sup> St

*Note: Crash data is based on police reporting at the scene and not severity as determined by a trained medical professional. For this and other reasons, crashes involving people walking and biking, and particularly reports of injury severity are often underreported.*

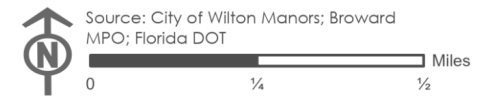


## LEGEND

- +— Florida East Coast Railway
- City Park
- ⬡ Wilton Manors Study Area

## Weighted Walking & Biking Crashes Per Mile

- Highest
- Lowest
- Pedestrian Death
- Serious Injury - Walking
- Serious Injury - Biking



Data Source:  
SignalFour Analytics,  
2018-2022

# Level of Traffic Stress

Measured by:



Number of Travel Lanes



Speed of Traffic



Number of Vehicles



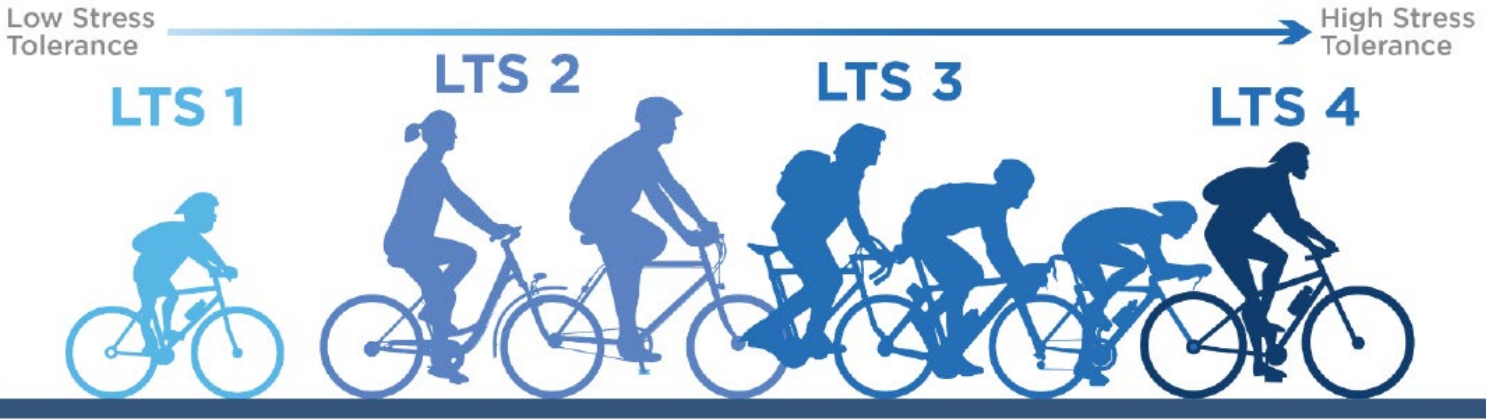
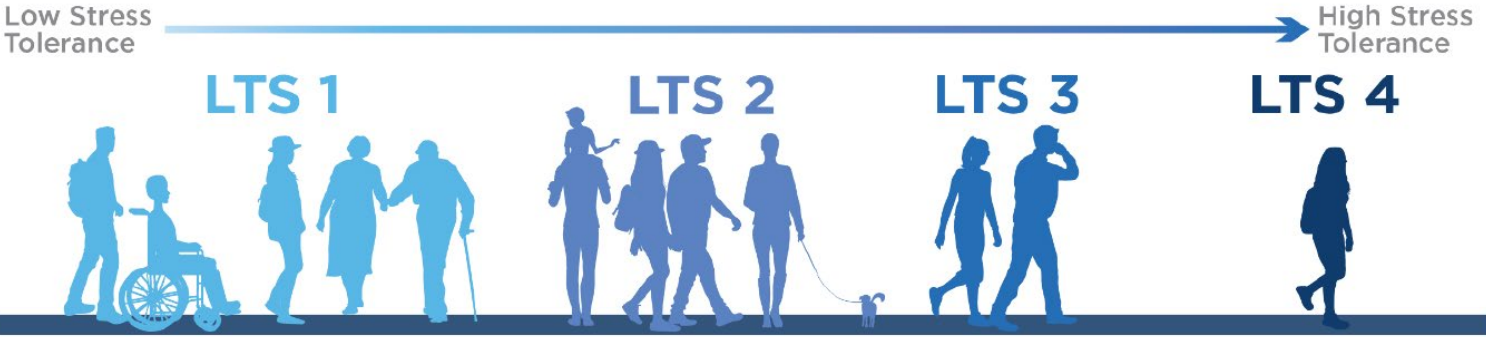
Presence of Bike or Ped Facilities



Width of Facilities



Separation from Cars



# LTS 3 & 4 Streets

- Streets with a score of LTS 3 or LTS 4 act as barriers to walking and biking



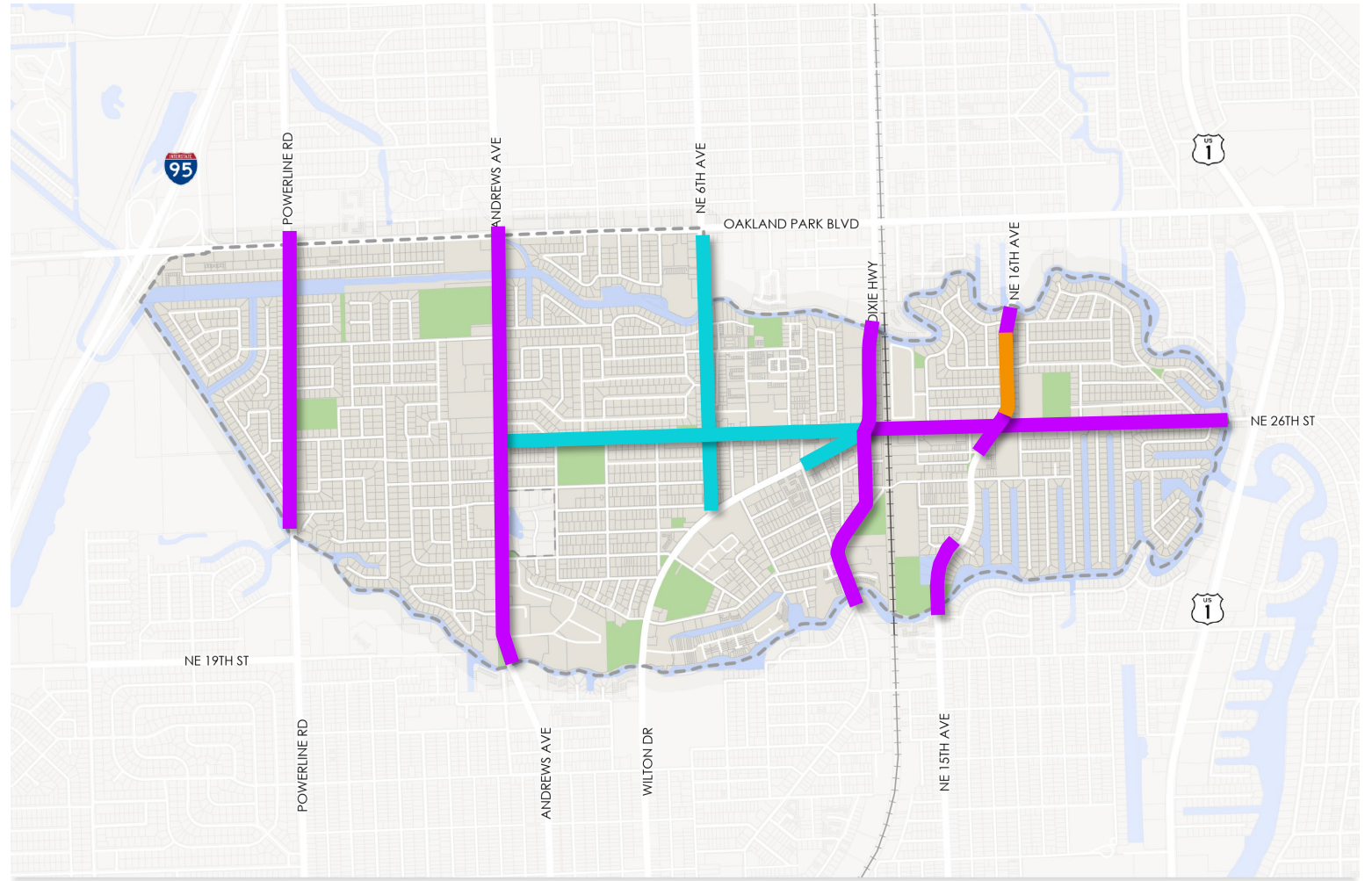
**LTS 3 / 4 Streets  
for Walking Only**



**LTS 3 / 4 Streets  
for Biking Only**



**LTS 3 / 4 Streets  
for Biking and  
Walking**



## LEGEND

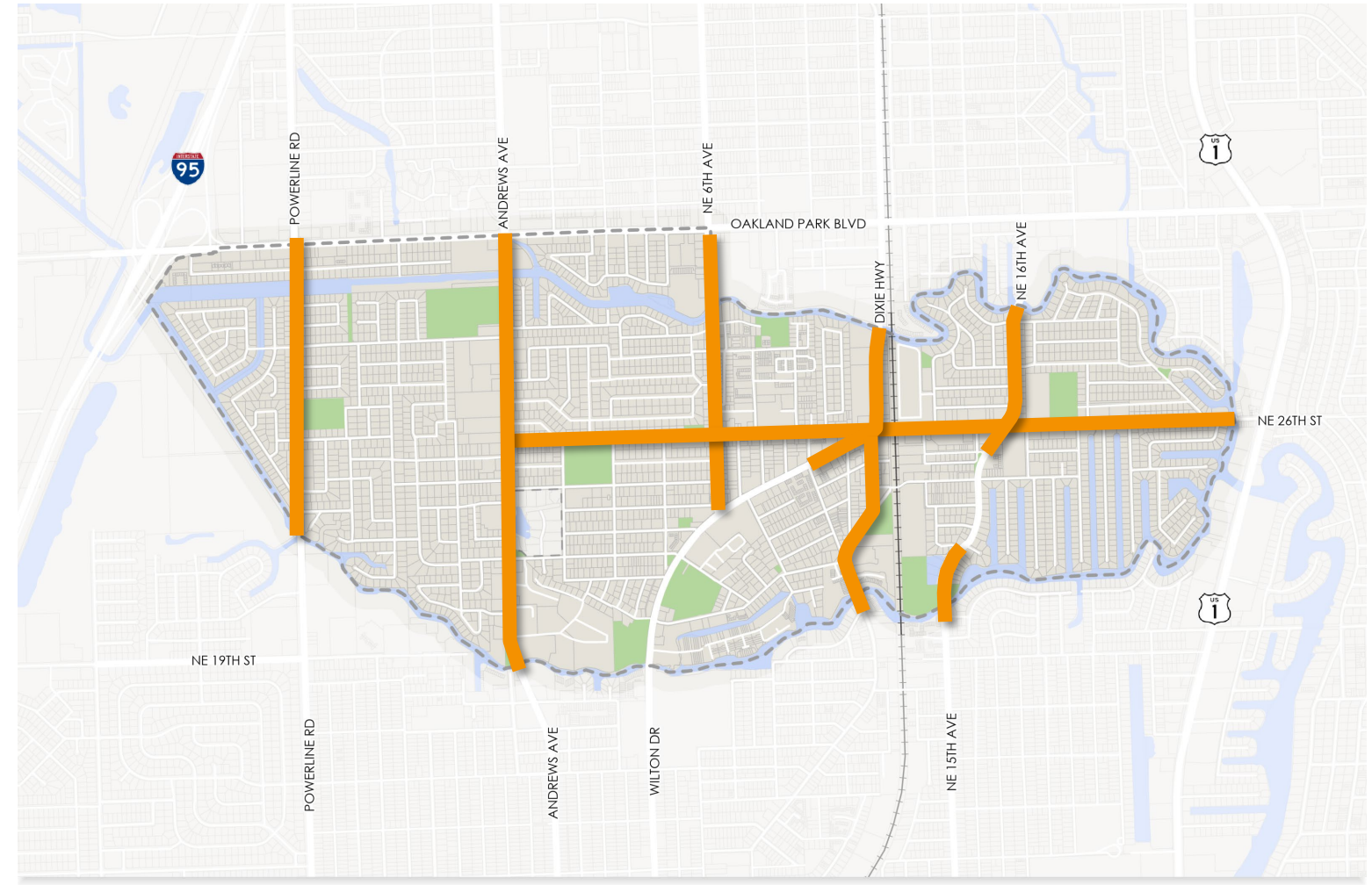
- +— Florida East Coast Railway
- City Park
- - - Wilton Manors Study Area

- Walk only LTS 3 and LTS 4 Roadways
- Bike only LTS 3 and LTS 4 Roadways
- Bike and Pedestrian LTS 3 and LTS 4 Roadways

Source: City of Wilton Manors; Broward MPO; Florida DOT

# Barriers to Movement

- Streets with a score of LTS 3 or LTS 4 (for walking or biking) act as barriers to walking and biking



## LEGEND

- +— Florida East Coast Railway
- City Park
- - - Wilton Manors Study Area

■ Bike and Pedestrian LTS 3 or LTS 4 Roadways

Source: City of Wilton Manors; Broward MPO; Florida DOT



# Intersections Are not Comfortable



No dedicated infrastructure for people biking



At least one pedestrian phase is too short for people 65 or older or people using mobility devices to cross comfortably



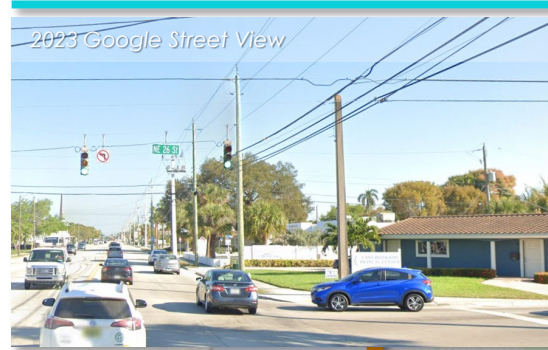
Roadways are wide requiring people walking to cross long distances



Two LTS 3 or 4 roadways intersect

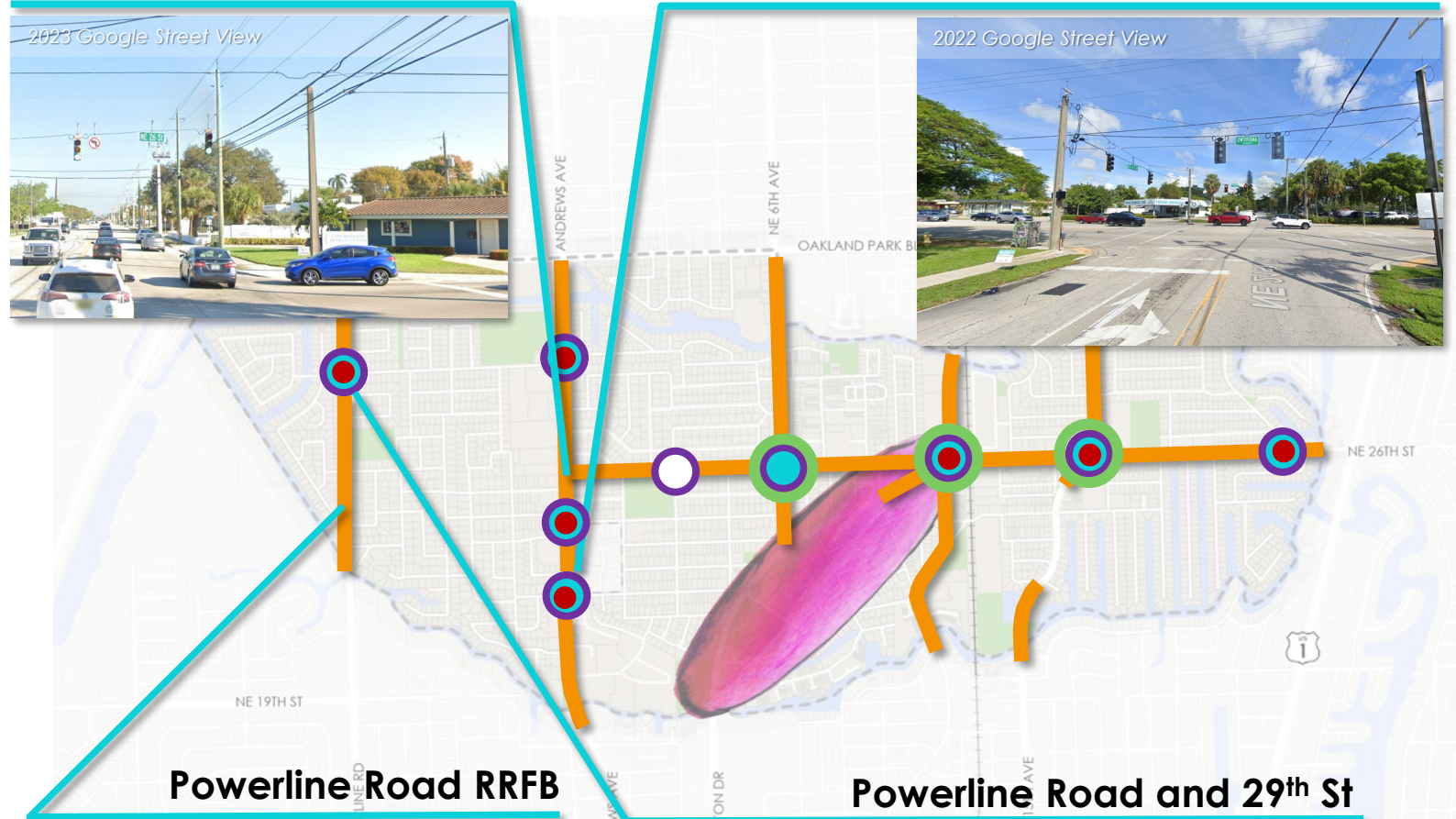
## Andrews Ave and 26<sup>th</sup> St

No crosswalks or pedestrian signalization



## Andrews Ave and 21<sup>st</sup> Ct

2022 Google Street View



## Powerline Road and 29<sup>th</sup> St

2022 Google Street View



# Limited Crossings for People Walking

- Signalized intersections provide places for pedestrian to cross high stress roadways and access Wilton Drive
- People walking in the eastern Wilton Manors have the fewest crossing options to Wilton Drive



## LEGEND

—+— Florida East Coast Railway

City Park

Wilton Manors Study Area

Pedestrian LTS 3 or LTS 4 Roadways

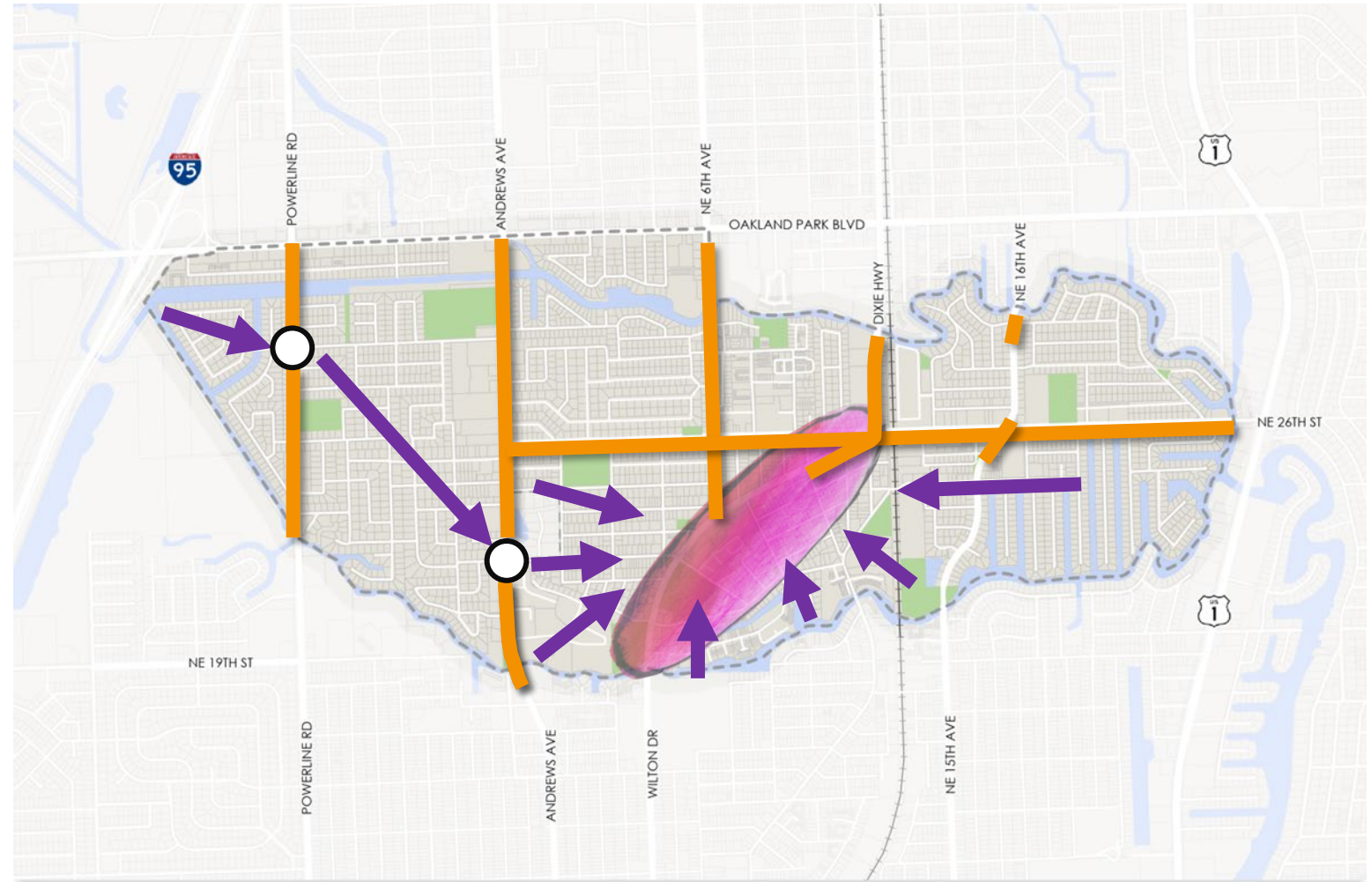
Source: City of Wilton Manors; Broward MPO; Florida DOT



0 1/4 1/2 Miles

# Limited Crossings for People Biking

- People biking are being **funneled** through very limited signalized east-west crossings
- Offset intersections force bikes onto high stress roadways



## LEGEND

—+— Florida East Coast Railway

City Park

Wilton Manors Study Area

Bike and Pedestrian LTS 3 or LTS 4 Roadways



# LTS Doesn't Consider All Measures



Bike lanes are narrow, drivers have to cross it to park, no buffer between bike lane and traffic, drivers park in the bike lane



Wilton Drive has some of the highest pedestrian and bicycle activity in the region but is still designed as a state highway.



People are observed walking outside of marked crosswalks

## Crossing Demand on Wilton Drive



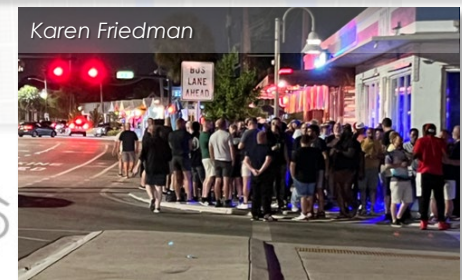
## Bike Lane on Wilton Drive



## Cars Stopped in Crosswalk



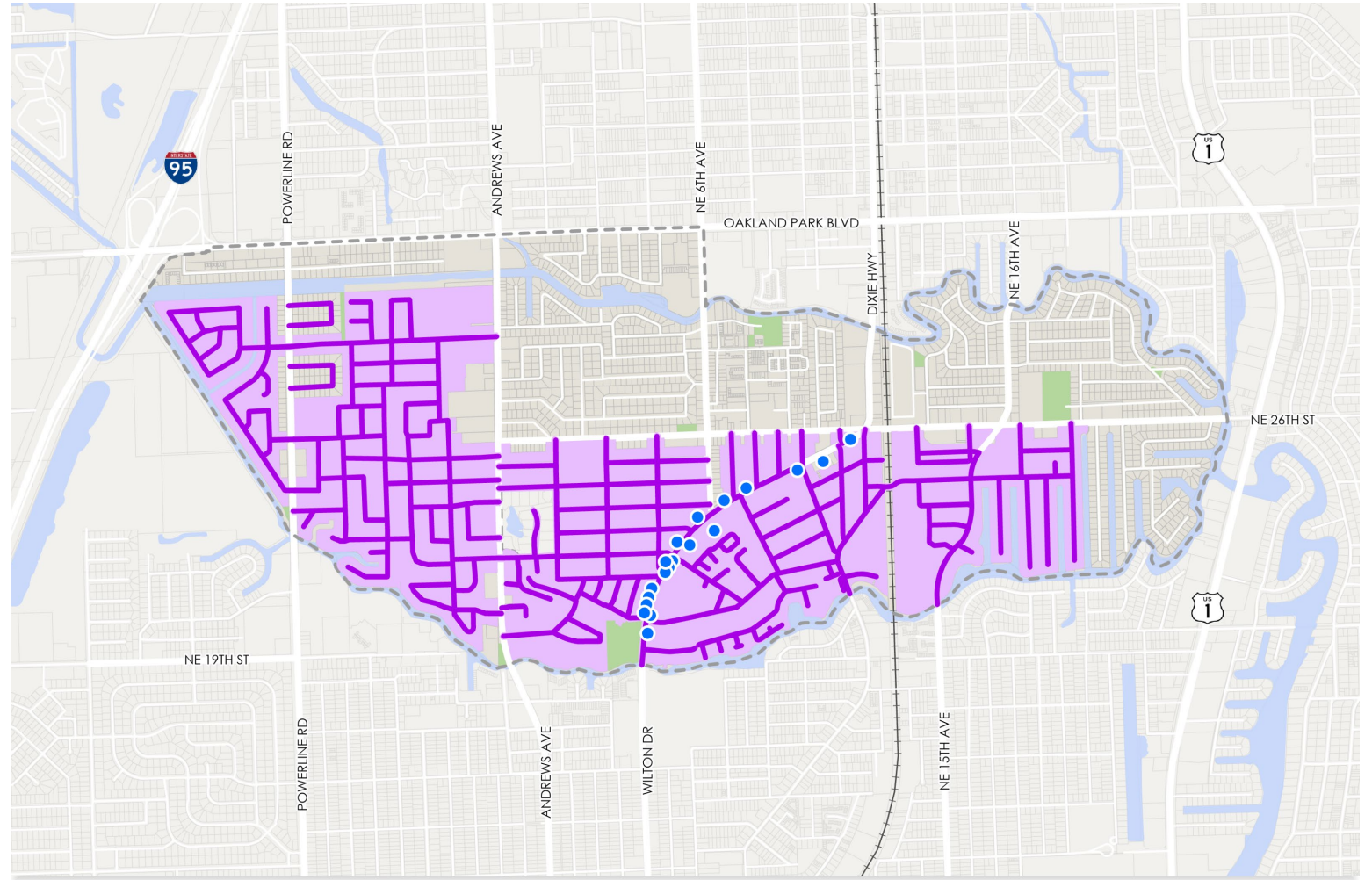
## Sidewalk at Wilton Drive and 7th Ave



# Limited Bike Access to Wilton Drive



Little access to Wilton Drive by residents living in northern and western Wilton Manors



## LEGEND

—+— Florida East Coast Railway

■ City Park

- - - Wilton Manors Study Area

● Wilton Drive Destinations

— Low Stress Network

■ Bike Access by Average Cyclist

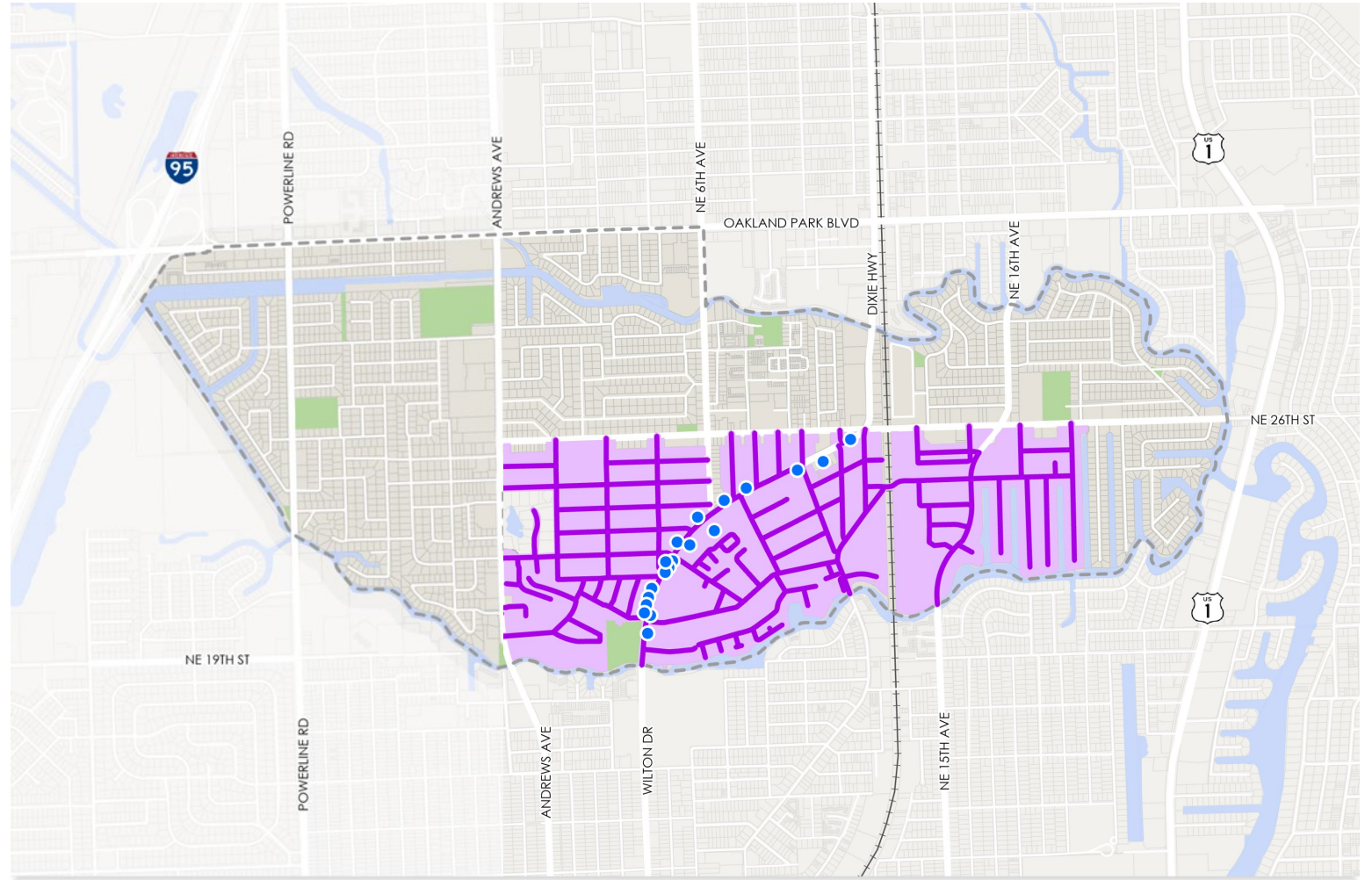
Source: City of Wilton Manors; Broward MPO; Florida DOT

0 1/4 1/2 Miles

# Limited Bike Access to Wilton Drive



Little access to Wilton Drive by residents living in northern and western Wilton Manors



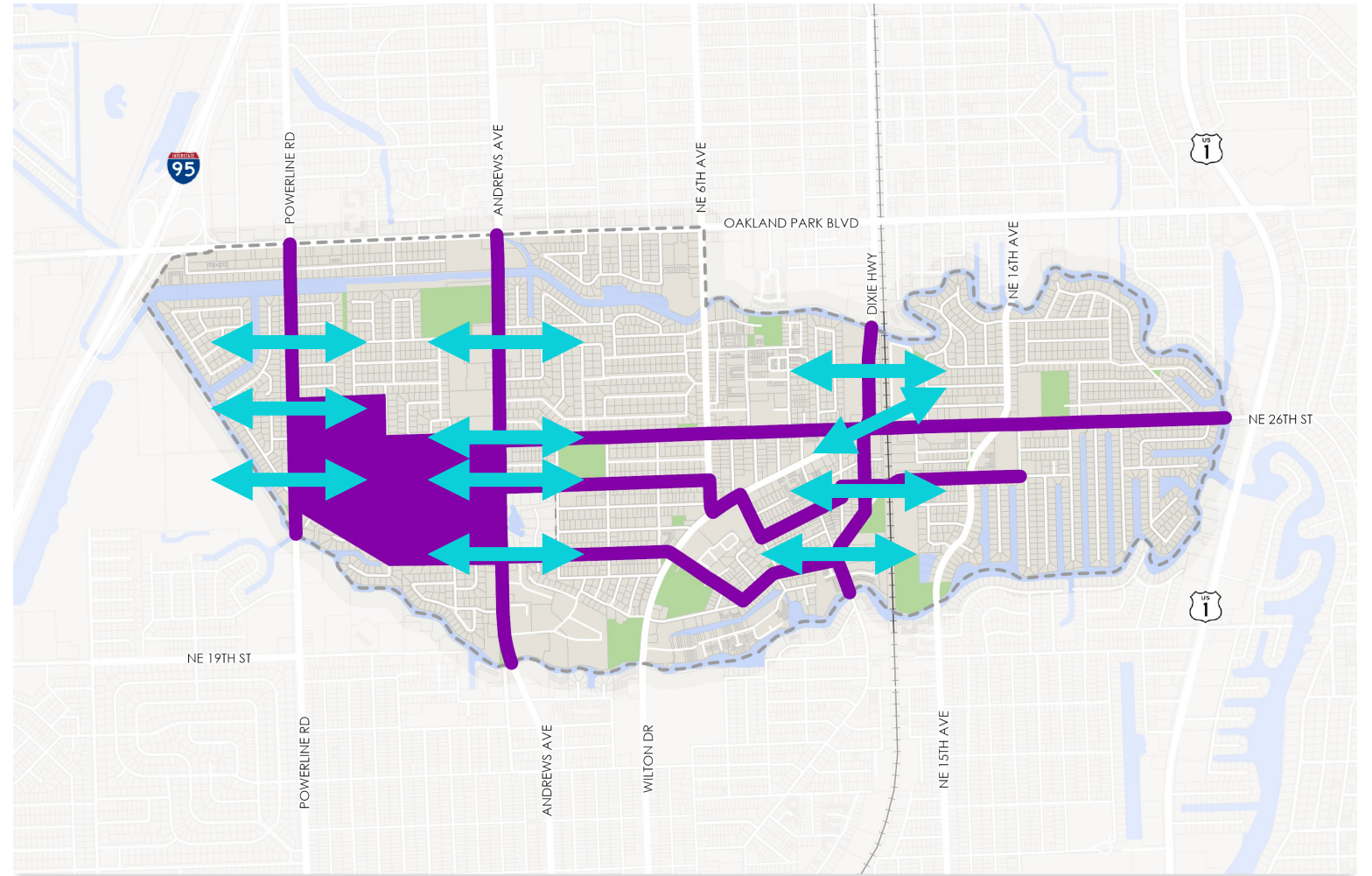
## LEGEND

- +— Florida East Coast Railway
- Wilton Drive Destinations
- City Park
- Low Stress Network
- - - Wilton Manors Study Area
- Bike Access by Average Cyclist

Source: City of Wilton Manors; Broward MPO; Florida DOT

# Addressing Issues on 6 Key Corridors

- **East / West Crossings**
  - Powerline Road
  - Andrews Ave
  - Dixie Hwy
- **North / South Crossings**
  - NE 26<sup>th</sup> St
  - Wilton Drive
- **LTS 3 & 4 Walking / Biking Facilities**
  - Powerline Road
  - Andrews Ave
  - Dixie Hwy
  - Wilton Drive
  - NE 26<sup>th</sup> St
- **Neighborhood Connections**
  - NE / NW 24<sup>th</sup> St
  - NE / NW 21<sup>st</sup> Ct



## LEGEND

—+— Florida East Coast Railway

▭ Wilton Manors Study Area

■ Study Area

■ City Park

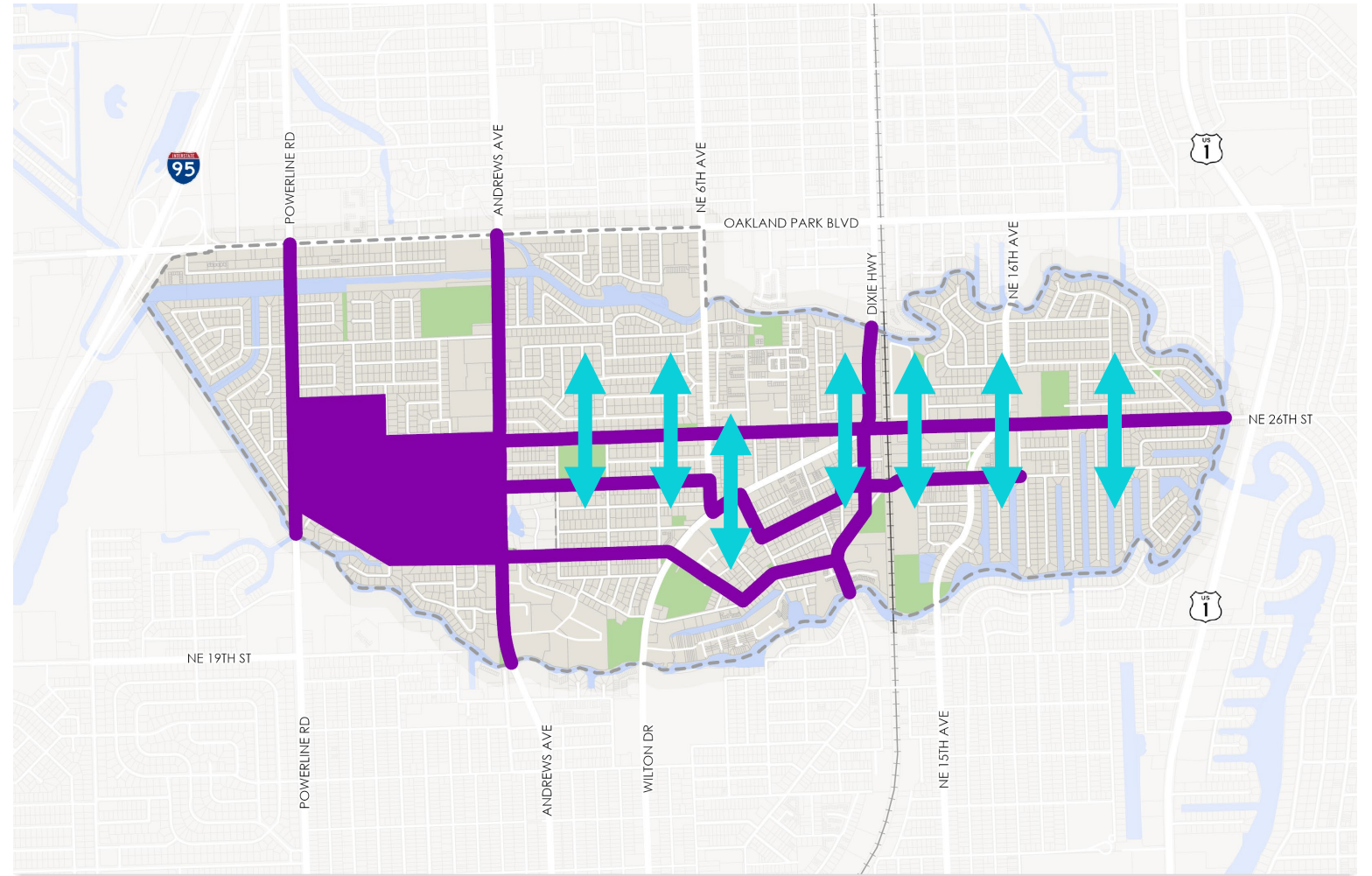


Source: City of Wilton Manors; Broward MPO; Florida DOT

0 1/4 1/2 Miles

# Addressing Issues on 6 Key Corridors

- East / West Crossings
  - Powerline Road
  - Andrews Ave
  - Dixie Hwy
- North / South Crossings
  - NE 26<sup>th</sup> St
  - Wilton Drive
- LTS 3 & 4 Walking / Biking Facilities
  - Powerline Road
  - Andrews Ave
  - Dixie Hwy
  - Wilton Drive
  - NE 26<sup>th</sup> St
- Neighborhood Connections
  - NE / NW 24<sup>th</sup> St
  - NE / NW 21<sup>st</sup> Ct



## LEGEND

—+— Florida East Coast Railway

▭ Wilton Manors Study Area

■ Study Area

■ City Park

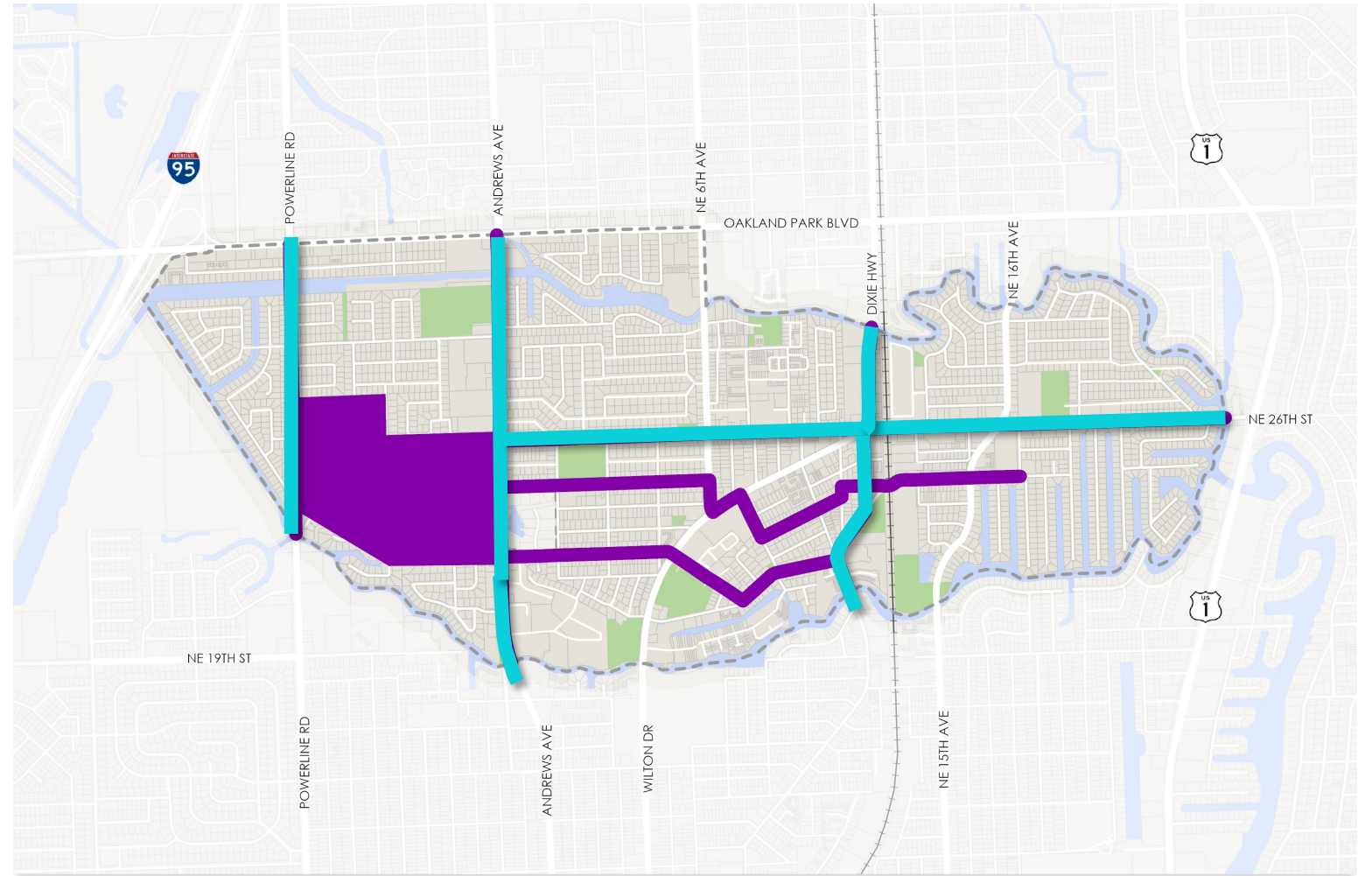
Source: City of Wilton Manors; Broward MPO; Florida DOT

0 1/4 1/2 Miles



# Addressing Issues on 6 Key Corridors

- East / West Crossings
  - Powerline Road
  - Andrews Ave
  - Dixie Hwy
- North / South Crossings
  - NE 26<sup>th</sup> St
  - Wilton Drive
- **LTS 3 & 4 Walking / Biking Facilities**
  - **Powerline Road**
  - **Andrews Ave**
  - **Dixie Hwy**
  - **NE 26<sup>th</sup> St**
- Neighborhood Connections
  - NE / NW 24<sup>th</sup> St
  - NE / NW 21<sup>st</sup> Ct

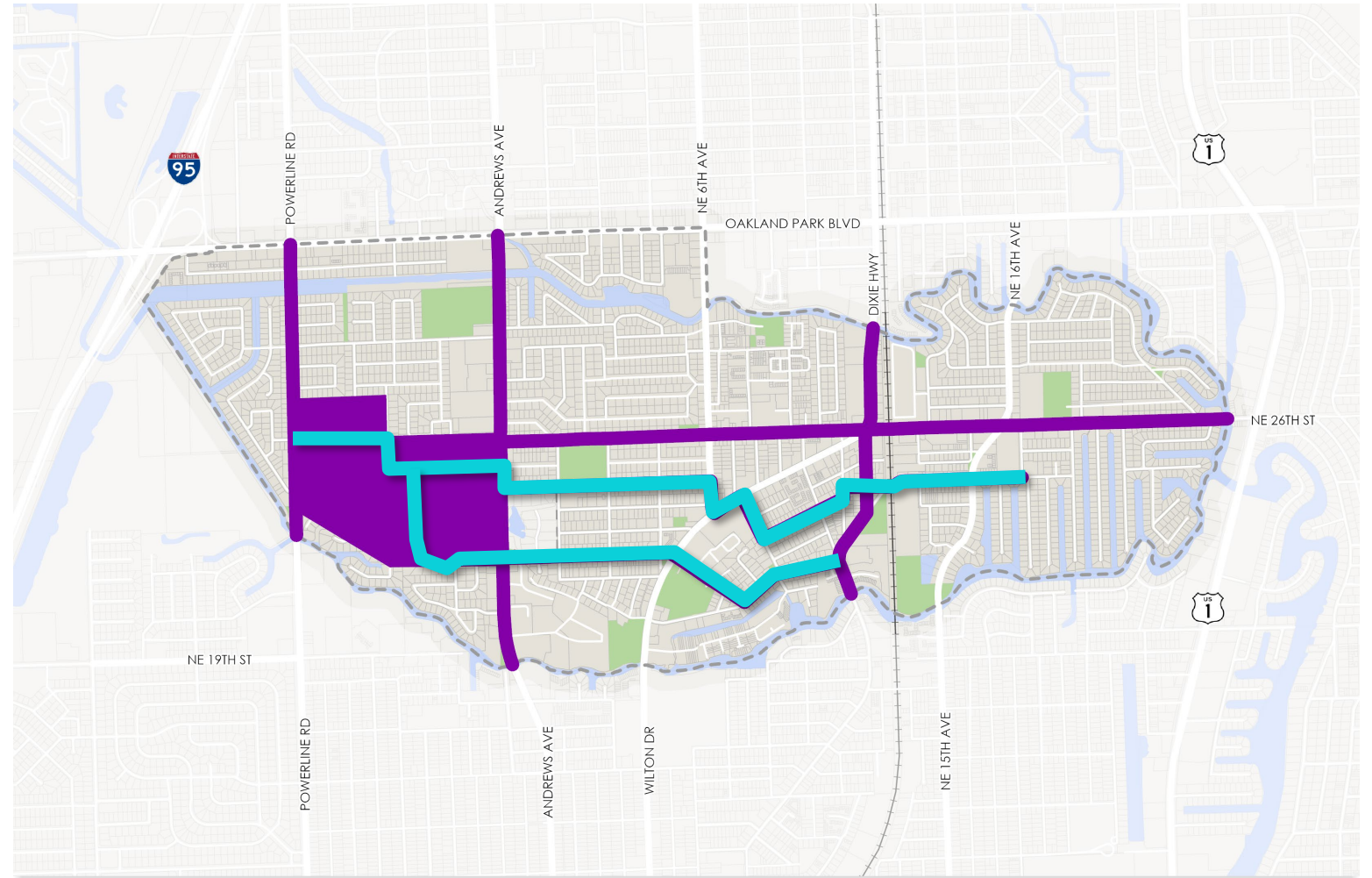


## LEGEND

- +— Florida East Coast Railway
  - ▭ Wilton Manors Study Area
  - Study Area
  - City Park
- Source: City of Wilton Manors; Broward MPO; Florida DOT
- 0 1/4 1/2 Miles

# Addressing Issues on 6 Key Corridors

- East / West Crossings
  - Powerline Road
  - Andrews Ave
  - Dixie Hwy
- North / South Crossings
  - NE 26<sup>th</sup> St
  - Wilton Drive
- LTS 3 & 4 Walking / Biking Facilities
  - Powerline Road
  - Andrews Ave
  - Dixie Hwy
  - NE 26<sup>th</sup> St
- Neighborhood Connections
  - NE / NW 24<sup>th</sup> St
  - NE / NW 21<sup>st</sup> Ct



## LEGEND

—+— Florida East Coast Railway

▭ Wilton Manors Study Area

▬ Study Area

■ City Park

Source: City of Wilton Manors; Broward MPO; Florida DOT  
0 1/4 1/2 Miles