

Transportation Planning Equity Assessment

What is the equity assessment?

The Broward Metropolitan Planning Organization (Broward MPO) is working to create a standardized process to use in evaluating its plans, programs, and projects and to make informed decisions regarding equity in our communities. The goal of equity implementation is to create an approach that is fair, inclusive, and proactive during all phases of the planning process.

What does “equity” mean?

In this context, equity seeks to ensure that the benefits and impacts of plans, programs, and projects undertaken by the Broward MPO and its partner agencies are understood and that populations protected under federal non-discrimination laws and other authorities, including Title VI and Environmental Justice, are not disproportionately burdened during the planning process.

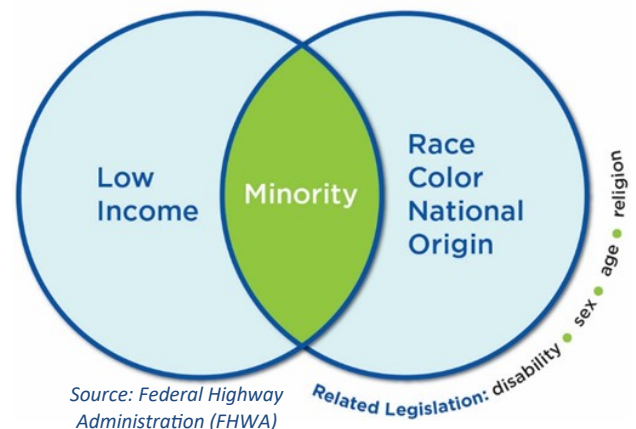
What is Title VI?

Title VI of the Civil Rights Act of 1964 states that “no person in the United States shall, on the ground of race, color, or national origin, be excluded from participation in, be denied the benefits of, or be subjected to discrimination under any program or activity receiving federal financial assistance.”

As a recipient of federal funds, the Broward MPO is required to prepare a Title VI Program demonstrating compliance. The Broward MPO is also responsible for monitoring any subrecipients to ensure their compliance with Title VI concerning federal funds received through the Broward MPO. Broward MPO’s [Title VI Program](#) triennial update was adopted by the Board on October 12, 2017. The next update will be completed in 2020.

Figure 1: Populations Protected Under Environmental Justice &

EO 12898 Title VI Statute



What is Environmental Justice?

Environmental Justice is the fair treatment and meaningful involvement of all people regardless of race, color, national origin, or income with respect to the development, implementation, and enforcement of federal laws, regulations, and policies.

Executive Order 12898 calls on each federal agency to achieve “environmental justice...by identifying and addressing, as appropriate, disproportionately high and adverse human health or environmental effects of its programs, policies, and activities on minority populations and low-income populations...”. U.S. Department of Transportation (DOT) Order 5610.2(a) sets forth the DOT policy to consider Environmental Justice in all DOT programs, policies, and activities. As a recipient of U.S. DOT funds, the Broward MPO is required to comply with Executive Order 12898 and U.S. DOT Order 5610.2(A) by incorporating Environmental Justice principles into its transportation decision-making processes.

Transportation Planning Equity Assessment

Relationship between Title VI and Environmental Justice

As shown in Figure 1 on the previous page, Title VI and Environmental Justice both address non-discrimination, identify minority populations, are rooted in the constitutional guarantee that all citizens are created equal, and both address involvement of affected citizens in the decision-making process.

Title VI covers race, color, national origin, gender, age and disability, while Environmental Justice covers minority and low-income populations (refer to the figure below). Title VI prohibits discrimination while Environmental Justice mandates a process for inclusive decision-making.

Figure 2: Equity Assessment Indicators



How are equity areas determined?

One of the first steps in this process was to develop a methodology that identifies where higher concentrations of persons protected under applicable federal non-discrimination laws and authorities live in Broward County. This process produced Transportation Planning Equity Areas, which are based on a composite "equity score" assigned to each Census Block Group in the county. The equity score is based on U.S. Census American Community Survey (ACS) data for seven demographic indicators, as illustrated in Figure 2 below.

What does the equity area map look like?

Map 1 on the following page illustrates the output of the equity areas in terms of block groups with low, medium, high, and very high concentrations of populations based on the seven demographic indicators.

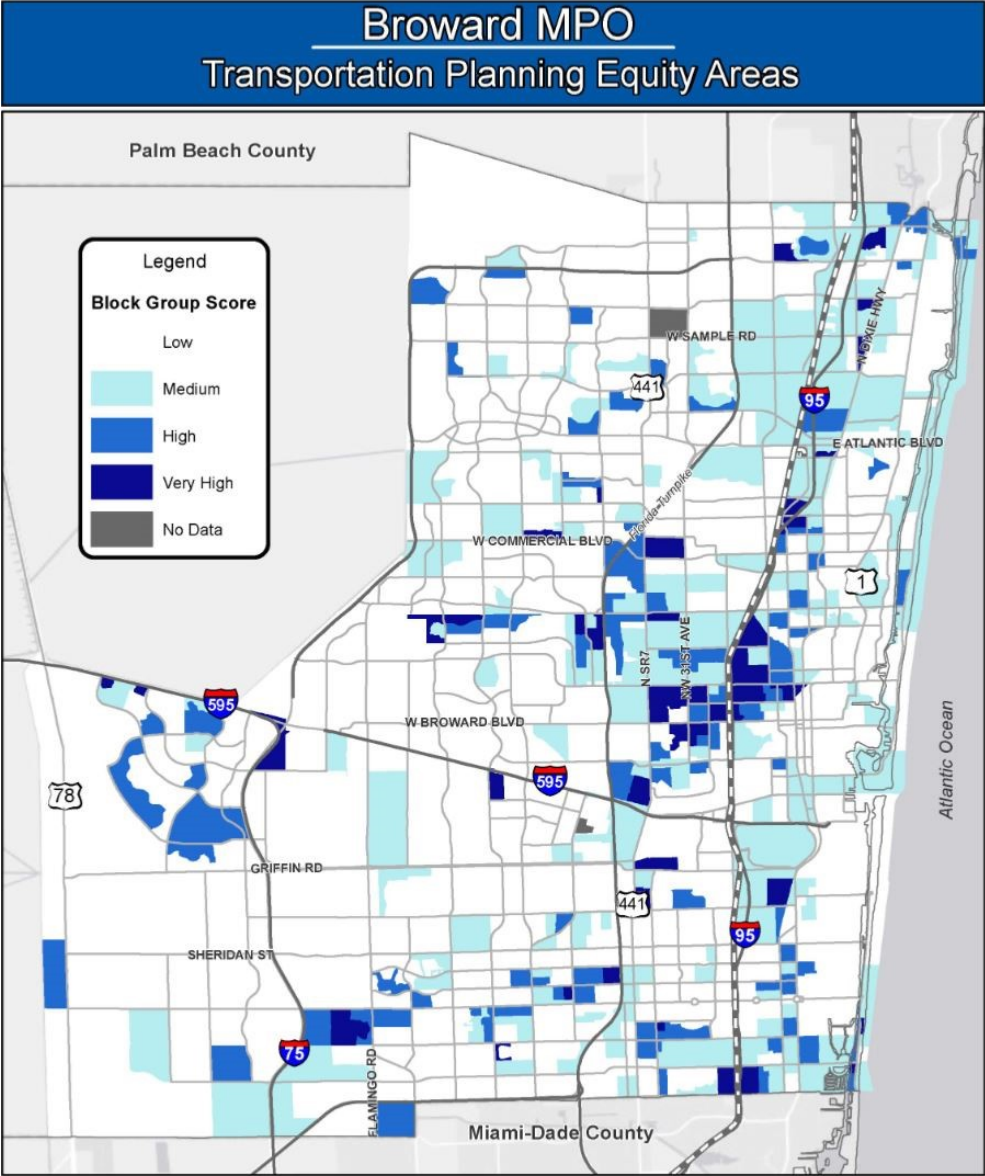
It should be noted that the map and composite scores produced through this process are intended to serve as resources to enhance and streamline the planning process. The equity area map is not intended to holistically define population groups within Broward County or replace public outreach and other analyses that should be completed during the planning process.

Why is this equity assessment important for you?



The equity assessment process provides a ready-to-use methodology and dataset to identify equity areas in your community. Knowing where populations protected under federal non-discrimination laws live is critical to ensuring that Title VI and Environmental Justice are appropriately considered during the planning process.

FACT SHEET

Transportation Planning Equity Assessment



Map 1: Transportation Planning Equity Areas

<p>Prepared By:</p>  <p>BrowardMPO.org</p>	<p><small>This map is provided as is, without warranty of any representation of accuracy, timeliness, or completeness. The MPO makes no warranties, express or implied, as to the use of this map. The user of this map acknowledges and accepts the limitations of the map, including the fact that the data coverages are dynamic and in constant state of transition, collection, and update. For complete guidance on concerns about the rights of individuals about, or for special requests under the Americans with Disabilities Act, please contact: Christopher Ryan, Public Information Officer/Tiles of Coordinator at (954) 875-0036 or ryan@browardmpo.org.</small></p> <p>Source: Broward MPO, 2017 ACS 5-year Estimates File Name: BU_Index_2017.mxd</p> <p>Map Date: 12/14/2018 Aerial Image Date: NA Created by: Broward MPO</p>	 <p>0 1.25 2.5 Miles</p>
---	---	---

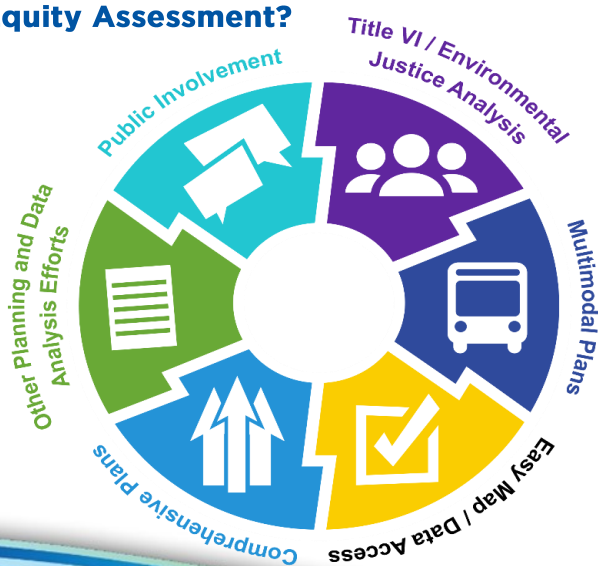
Transportation Planning Equity Assessment

How can you use the equity assessment?

Our goal is that this information can and will be used as a planning resource by MPO staff and partner agencies, including cities, counties, and transit agencies, saving time by providing easily accessible data and maps. Primarily, we hope that the methodology and outputs help facilitate the consideration of equity in the planning process, either by providing a standardized way to identify equity areas or by providing easily accessible key data for federally-protected population groups in Broward County.

We also hope the [interactive maps](#) can be used as an information portal by anyone, planners or the public alike, looking for demographic data of their neighborhood, city, or the county.

Figure 3: How Can I Use the Equity Assessment?



Where can I find more information on the equity assessment process?

Please visit our [Title VI Transportation Planning Equity Assessment](#) page for more information. This is located under the “Resources” tab at [BrowardMPO.org](#).

You can also view an interactive version of the Transportation Planning Equity Area Map [here](#). On this interactive webpage you can:

- ◆ View the composite scores by block group and the breakdown of indicator data used to develop the scores
- ◆ Look at maps for each indicator
- ◆ Export data for the composite equity score and each indicator into a CSV (Comma Separated View) format
- ◆ Export the maps into a PNG (Portable Graphics Format) file

Guidance & Resources

Title VI—Federal Transit Administration (FTA) <https://www.transit.dot.gov/title6>

Title VI—Federal Highway Administration (FHWA) <https://www.fhwa.dot.gov/civilrights/programs/tvi.cfm>

Environmental Justice (FTA) <https://www.transit.dot.gov/regulations-and-guidance/environmental-programs/environmental-justice/environmental-justice>

Environmental Justice (FHWA) https://www.fhwa.dot.gov/environment/environmental_justice/

Center for Environmental Excellence by AASHTO (American Association of State Highway and Transportation Officials) http://environment.transportation.org/environmental_topics/environmental_justice/