

Cypress Creek Mobility Hub Master Plan

Kickoff Meeting
December 9, 2014

James Cromar
Director of Planning
Broward Metropolitan Planning Organization



A Partnership

- South Florida Regional Transportation Authority (SFRTA)
- Broward Metropolitan Planning Organization (MPO)
- Florida Department of Transportation (FDOT)
- Broward County
- City of Fort Lauderdale
- City of Oakland Park
- Envision Uptown

Funding from Broward MPO

- Broward MPO Mobility Hub (\$800K)
 - Planning
 - Preliminary Design
- Implementation (\$7M – FY 2018)
 - Transit Infrastructure
 - Pedestrian and Bicycle Improvements
 - Joint Development

Broward Metropolitan Planning Organization



MOBILITY HUBS

Gateway Hubs \$8.2M



Anchor Hubs \$1.9M



Community Hubs \$57K

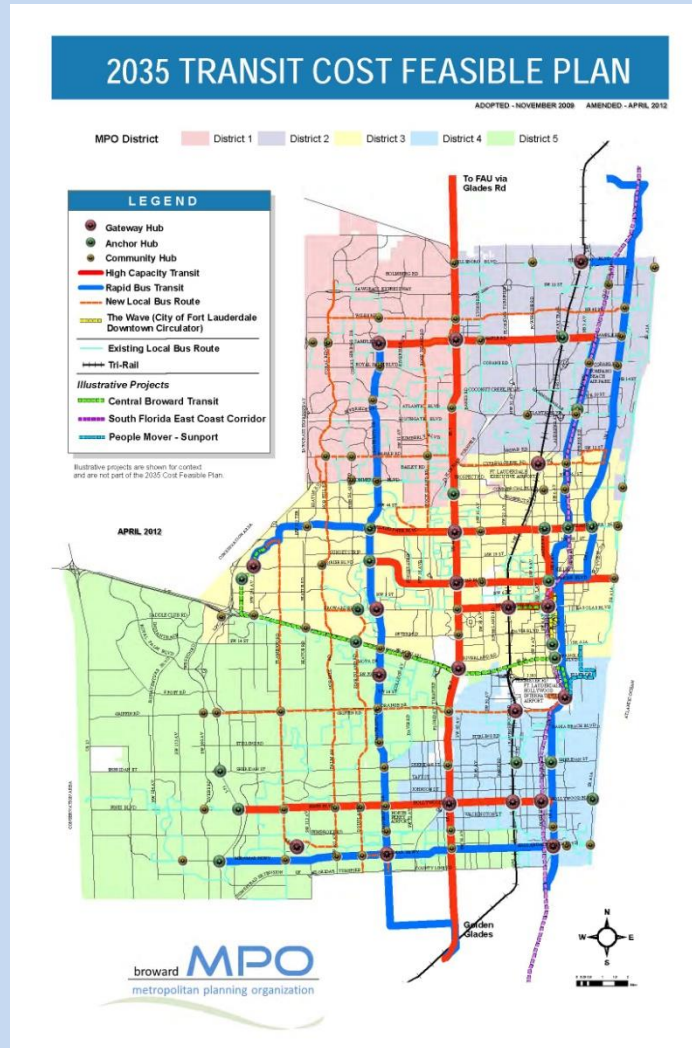


PREMIUM TRANSIT

High Capacity



Rapid Bus



Cypress Creek Mobility Hub

Legend

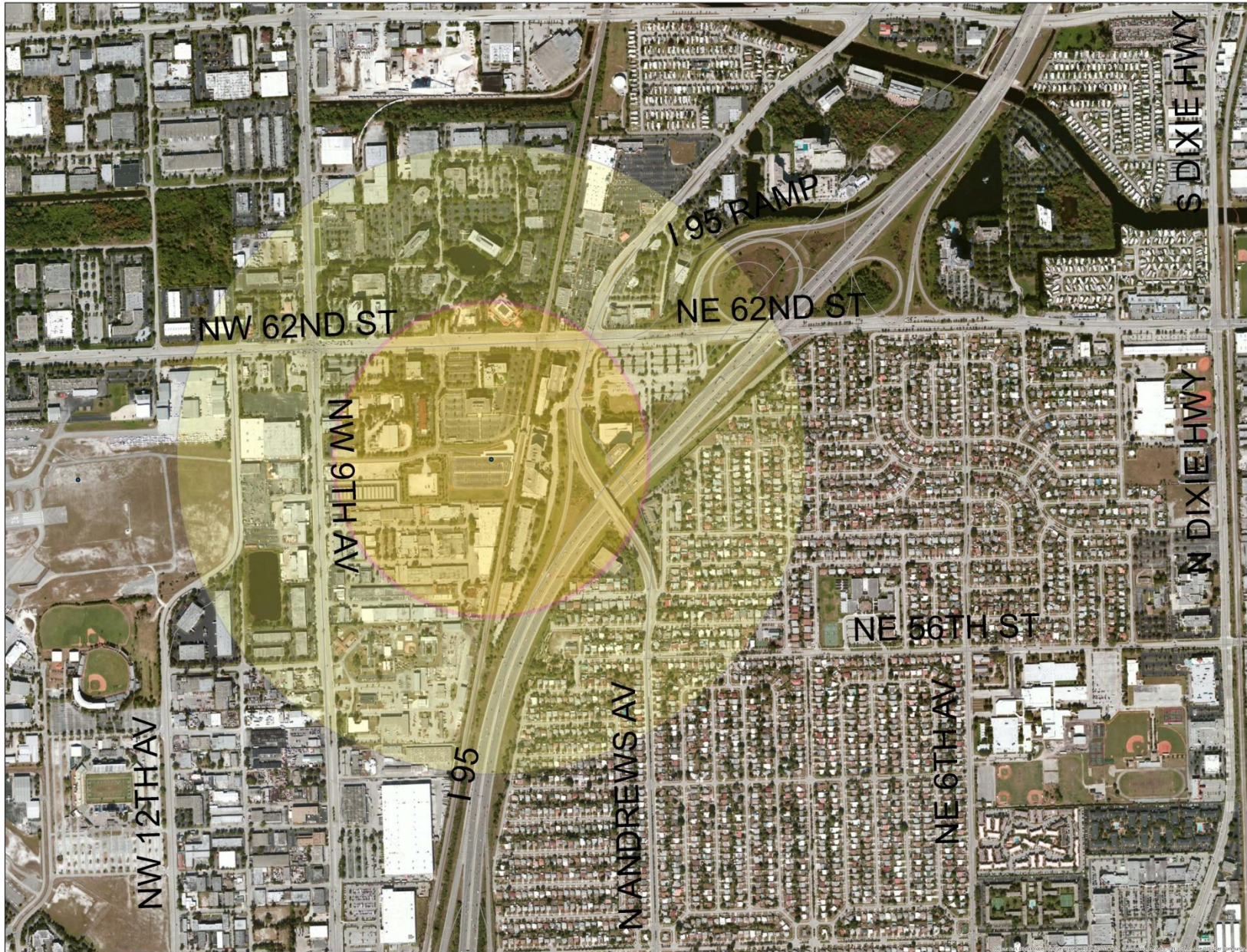
- Half Mile Buffer
- Quarter Mile Buffer

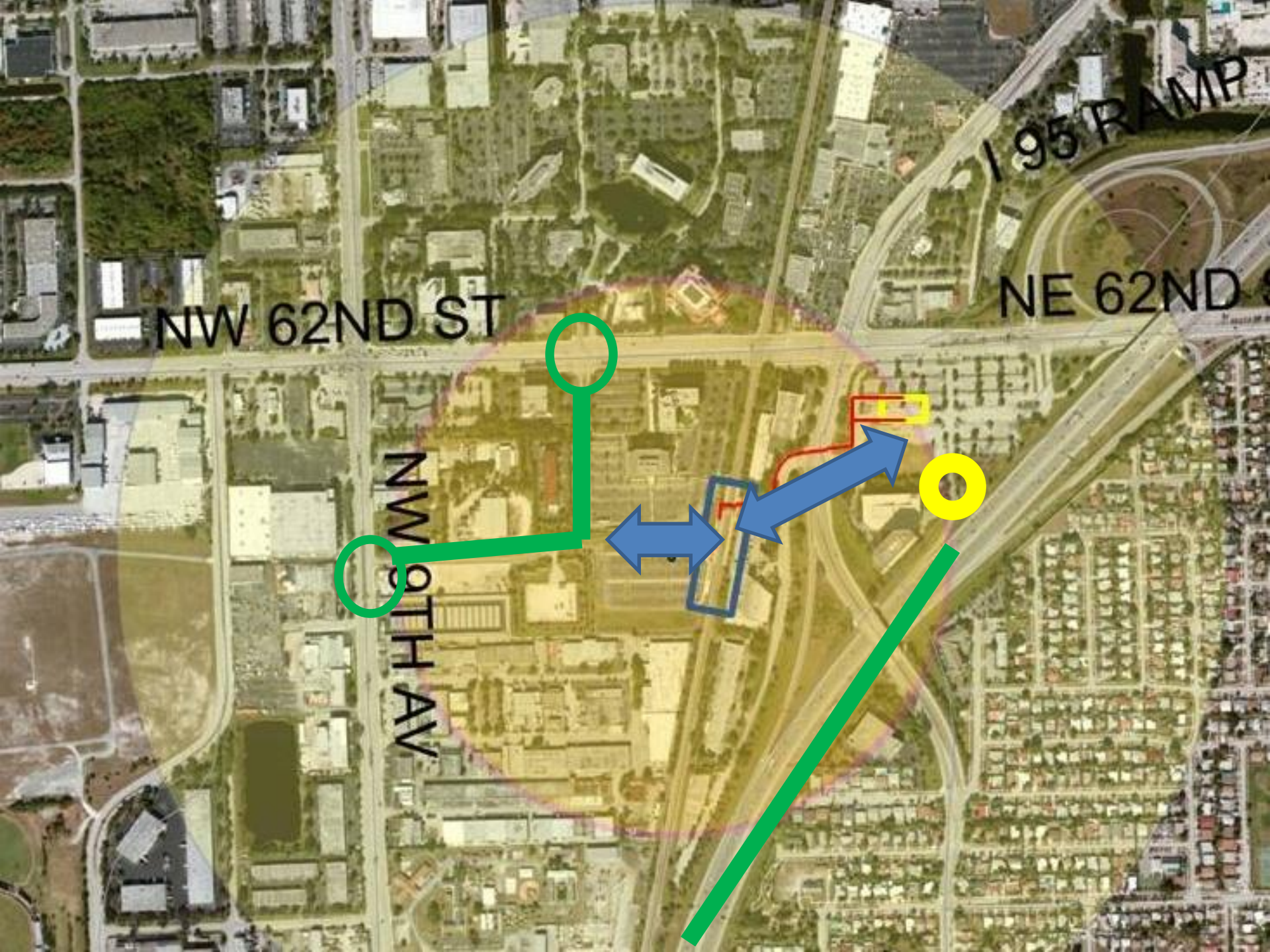


Transit

Legend

- Half Mile Buffer
- Quarter Mile Buffer





NW 62ND ST

I-95 RAMP

NE 62ND ST

NW 9TH AV

Pedestrian and Bicycle Connections

Legend

- Half Mile Buffer
- Quarter Mile Buffer



Powerline Road at Cypress Creek Road



6101-6199 NW 9th Ave
Fort Lauderdale, FL 33309 - approximate address

STREET VIEW



Back to Map



Hide imagery

Powerline Road at Cypress Creek Road



6101-6199 NW 9th Ave
Fort Lauderdale, FL 33309 – approximate address

STREET VIEW



Hide imagery



Back to Map



Land Uses



Land Uses

- Employment
- Residential
- Retail / Restaurant
- Educational
- Parking (Structured)
- Groceries / Drug Store
- Services – Day Care, Dry Cleaners

Developing Long-Term Strategies for
Resiliency in the Face of Climate Change:

The Uptown Urban Village

Technical Assistance Panel
for the City of Fort Lauderdale, Florida



August 12 and 13, 2014
Fort Lauderdale, Florida

 **Urban Land
Institute**
Southeast Florida/Caribbean

Process

- Broward MPO Mobility Hub (\$800K)
 - Planning
 - Preliminary Design
- Implementation (\$7M – FY 2018)
 - Transit Infrastructure
 - Pedestrian and Bicycle Improvements
 - Joint Development

Cypress Creek Mobility Hub Master Plan

1. Data Collection, Planning and Budget Feasibility
2. Environmental (Optional)
3. Survey
4. Market Study/Economic Analysis
5. Conceptual Site Plan
6. RFP/RFQ Development
7. Streetscape Concept Plan
8. Categorical Exclusion Documents (Optional)
9. Meetings/Project Management

Thank you

James Cromar

Director of Planning

Broward Metropolitan Planning Organization

954-876-0038

cromarj@browardMPO.org

Visit our website at www.browardMPO.org

