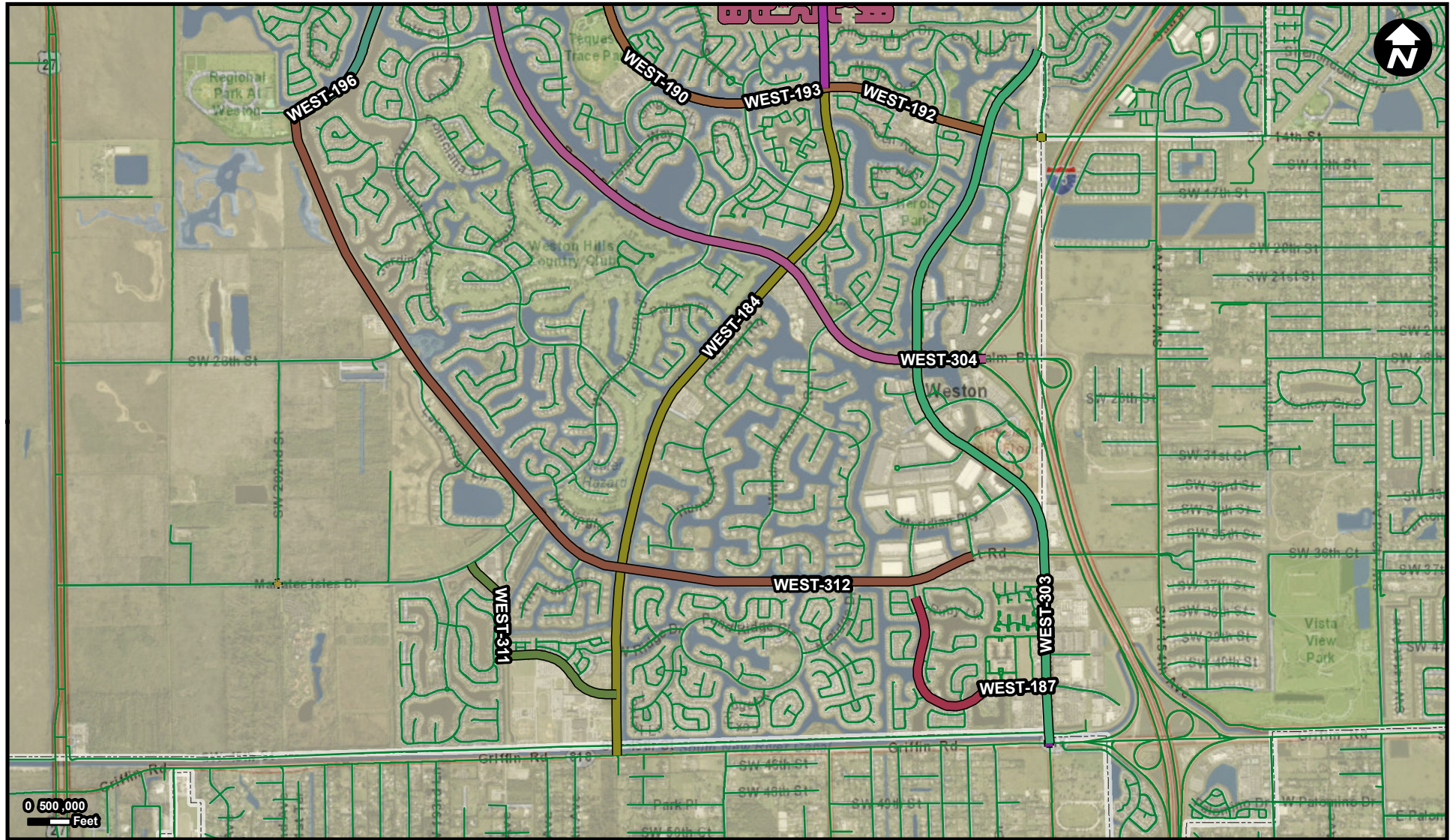


WEST-184

Project Name
Bonaventure Blvd Roadway Improvements



Legend

	WEST-184		WEST-195		WEST-300		WEST-312		Municipality
	WEST-187		WEST-196		WEST-302				Unincorporated
	WEST-190		WEST-222		WEST-303				
	WEST-192		WEST-224		WEST-304				
	WEST-193		WEST-289		WEST-306				
	WEST-194		WEST-290		WEST-311				

Suggested Work Mix: Bicycle Pedestrian Infrastructure

Primary Work Mix:

Secondary Work Mix:

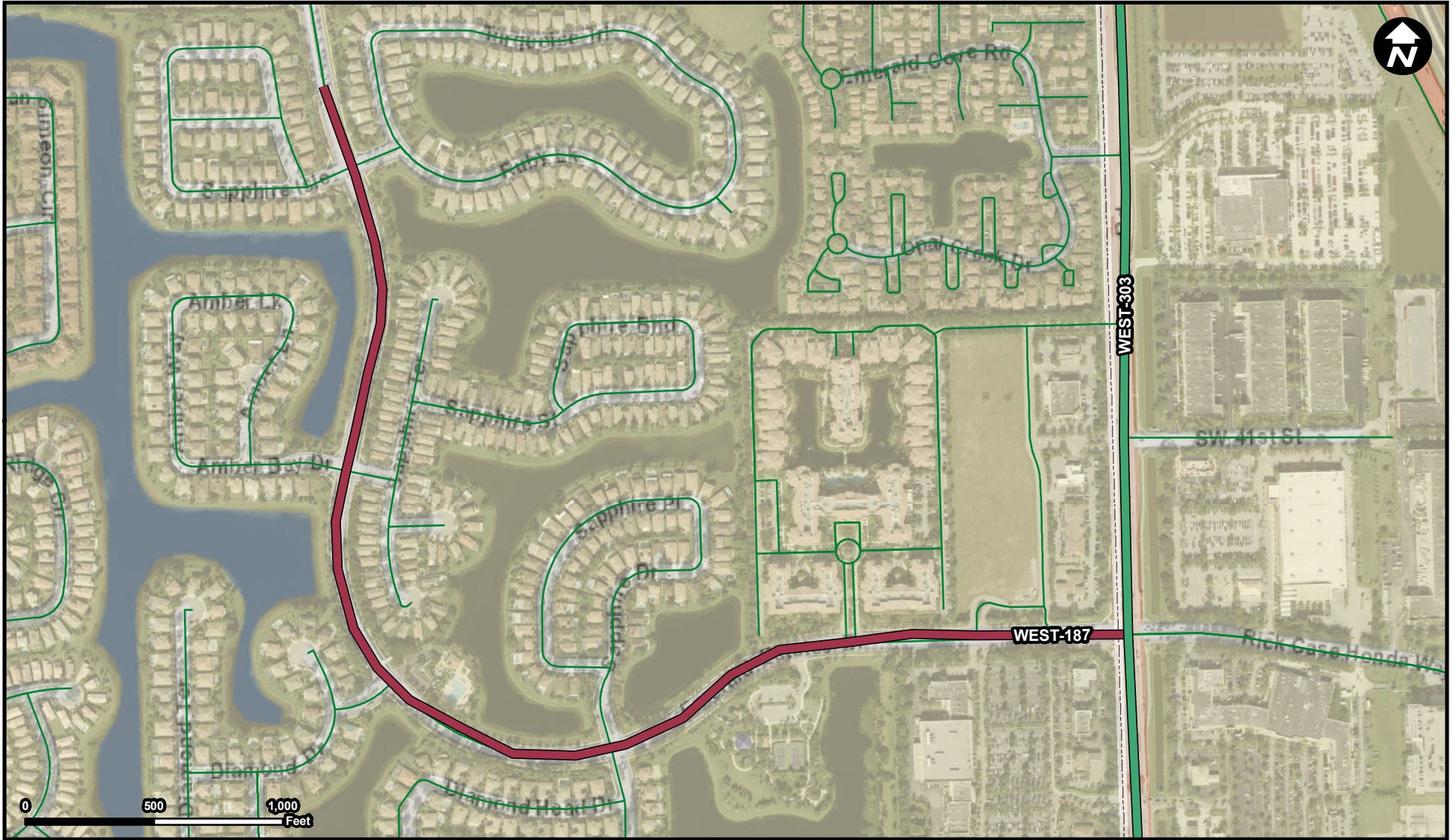
Project Description & Project Scope

Design and roadway repaving to improve transportation, roads and signalization




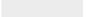
Construction of Improvements for ADA accessible ramps, sidewalks and re-construction of asphaltic roadway surface for bike lanes and vehicular traffic with associated pavement markings and signage.

FROM: Bonaventure Blvd at Griffin Road

To: Bonaventure Blvd Indian Trace



Legend

-  WEST-187
-  WEST-303
-  Municipality
-  Unincorporated

Suggested Work Mix: Bicycle Pedestrian Infrastructure
Primary Work Mix: Signing/Pavement
Secondary Work Mix:

FROM: Weston Rd at Emerald Estates Drive
To: Emerald Estate Drive Gate House

Project Description & Project Scope

Design and roadway repaving to improve transportation, roads and signalization

Design of Improvements for ADA accessible ramps, sidewalks and re-construction of asphaltic roadway surface for bike lanes and vehicular traffic with associated pavement markings and signage.



Legend

- WEST-188
- WEST-196
- Unincorporated
- WEST-190
- WEST-290
- WEST-191
- WEST-304
- WEST-192
- WEST-305
- WEST-193
- WEST-308
- WEST-195
- Municipality

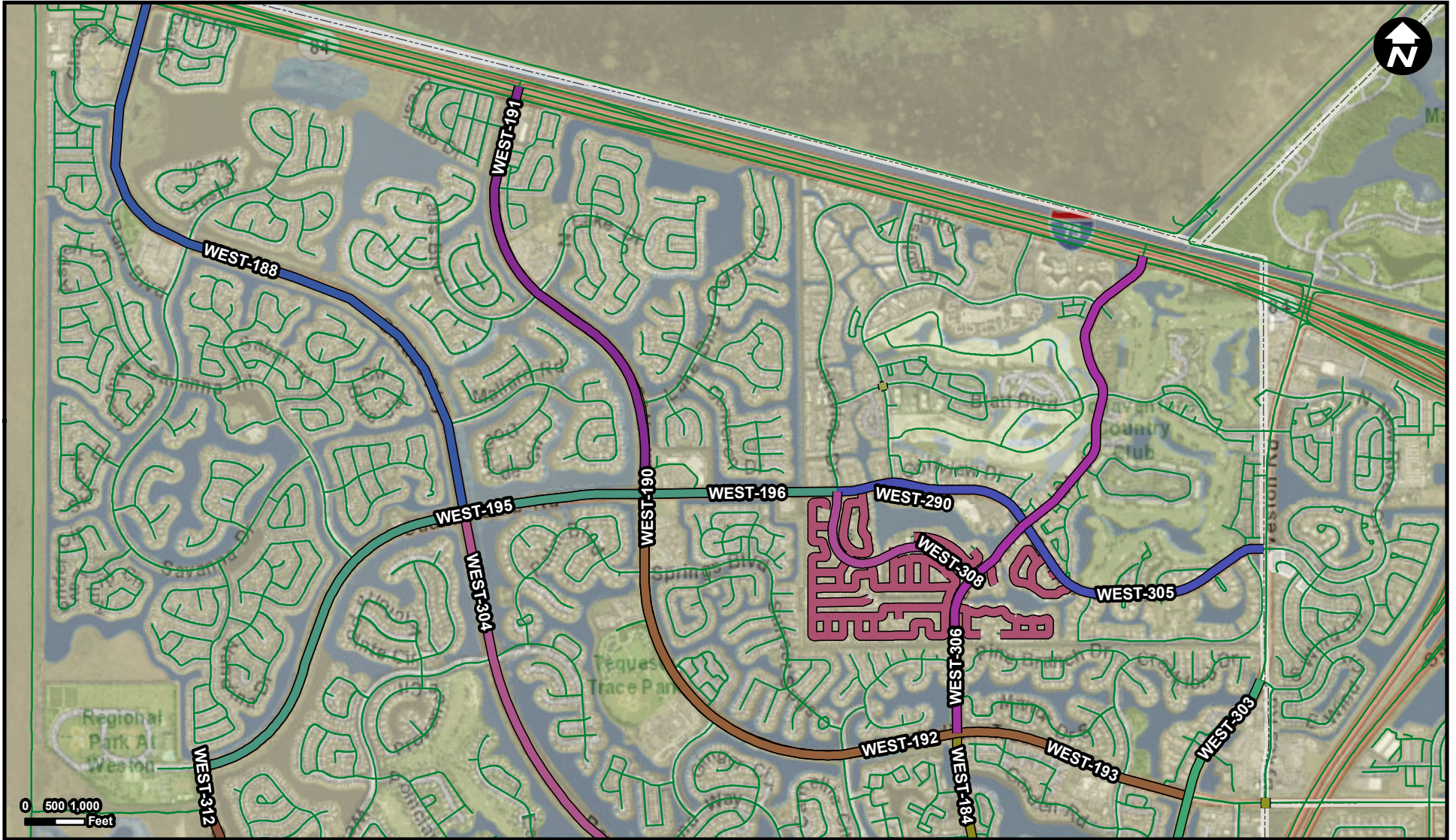
Suggested Work Mix: Bicycle Pedestrian Infrastructure
Primary Work Mix:
Secondary Work Mix:

Project Description & Project Scope Design and roadway repaving to improve transportation, roads and signalization

FROM:
To:

WEST-190

Project Name
Indian Trace Road Roadway Improvements



Legend

	WEST-184		WEST-195		WEST-303		Municipality
	WEST-188		WEST-196		WEST-304		Unincorporated
	WEST-190		WEST-289		WEST-305		
	WEST-191		WEST-290		WEST-306		
	WEST-192		WEST-301		WEST-308		
	WEST-193		WEST-302		WEST-312		

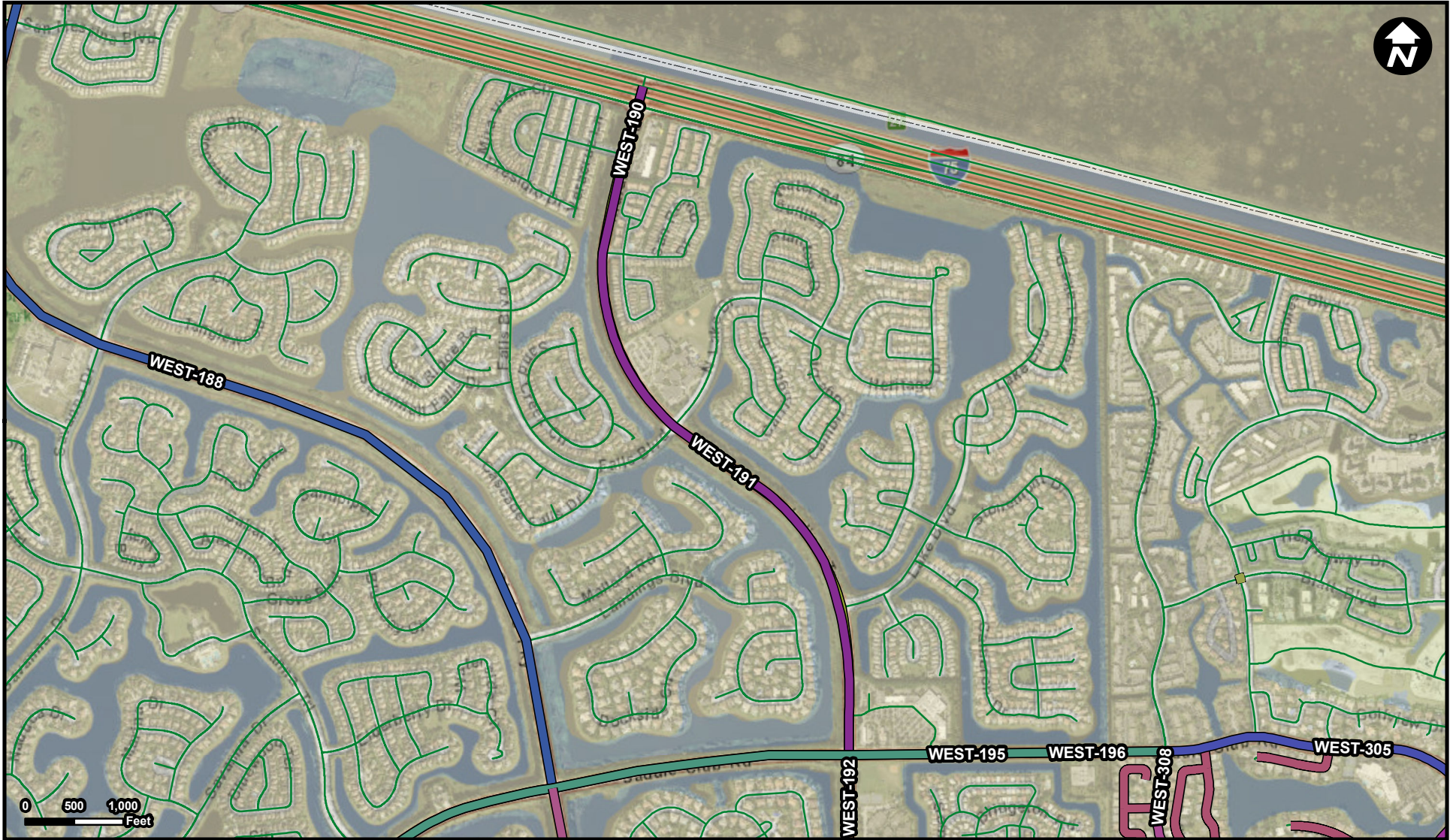
Suggested Work Mix: Bicycle Pedestrian Infrastructure
Primary Work Mix: Signing/Pavement
Secondary Work Mix: Bike Lane Sidewalk

FROM: On Indian Trace at SR 84E
To: On Indian Trace at Bonaventure Blvd

Project Description & Project Scope
 Design and roadway repaving to improve transportation, roads and signalization
 Design and Survey Only - For

WEST-191

Project Name
Indian Trace Road Roadway Improvements



Legend

	WEST-188		WEST-196		WEST-308
	WEST-190		WEST-290		Municipality
	WEST-191		WEST-301		Unincorporated
	WEST-192		WEST-304		
	WEST-193		WEST-305		
	WEST-195		WEST-306		

Suggested Work Mix: Bicycle Pedestrian Infrastructure
Primary Work Mix: Add Lanes
Secondary Work Mix: Signing/Pavement

FROM: From Indian Trace Saddle Club Road
To: Indian Trace at SR84

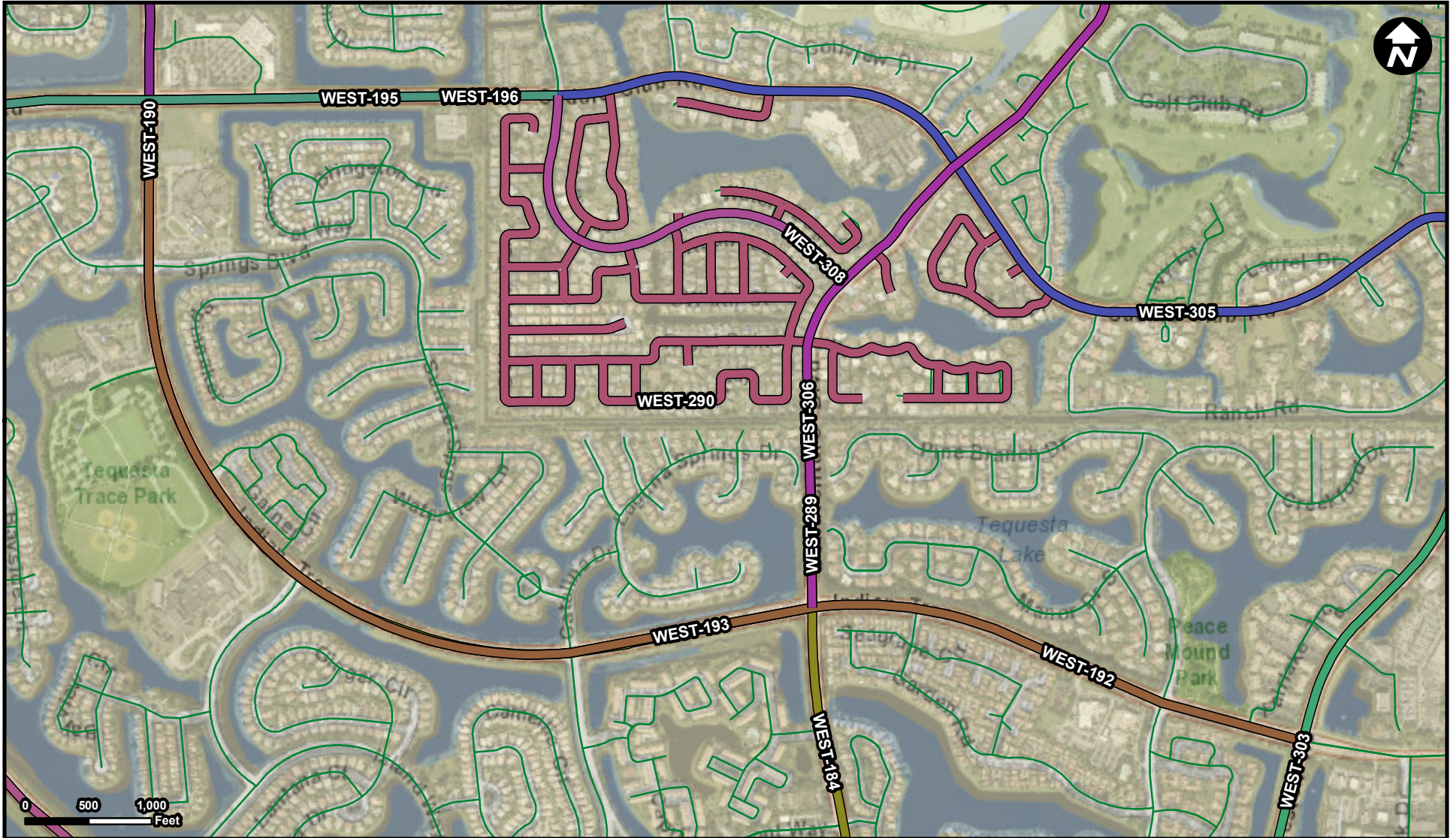
Project Description & Project Scope

Design and roadway repaving to improve transportation, roads and signalization

Construction of Improvements for ADA accessible ramps, sidewalks and re-construction of asphaltic roadway surface for bike lanes and vehicular traffic with associated pavement markings and signage.

WEST-192

Project Name
Indian Trace Road Roadway Improvements



Legend

	WEST-184		WEST-196		WEST-306
	WEST-190		WEST-289		WEST-308
	WEST-191		WEST-290		Municipality
	WEST-192		WEST-303		Unincorporated
	WEST-193		WEST-304		
	WEST-195		WEST-305		

Suggested Work Mix: Bicycle Pedestrian Infrastructure
Primary Work Mix: Bike Lane Sidewalk
Secondary Work Mix:

FROM: Indian Trace at SW 160 Ave
To: Indian Trace at Saddle Club

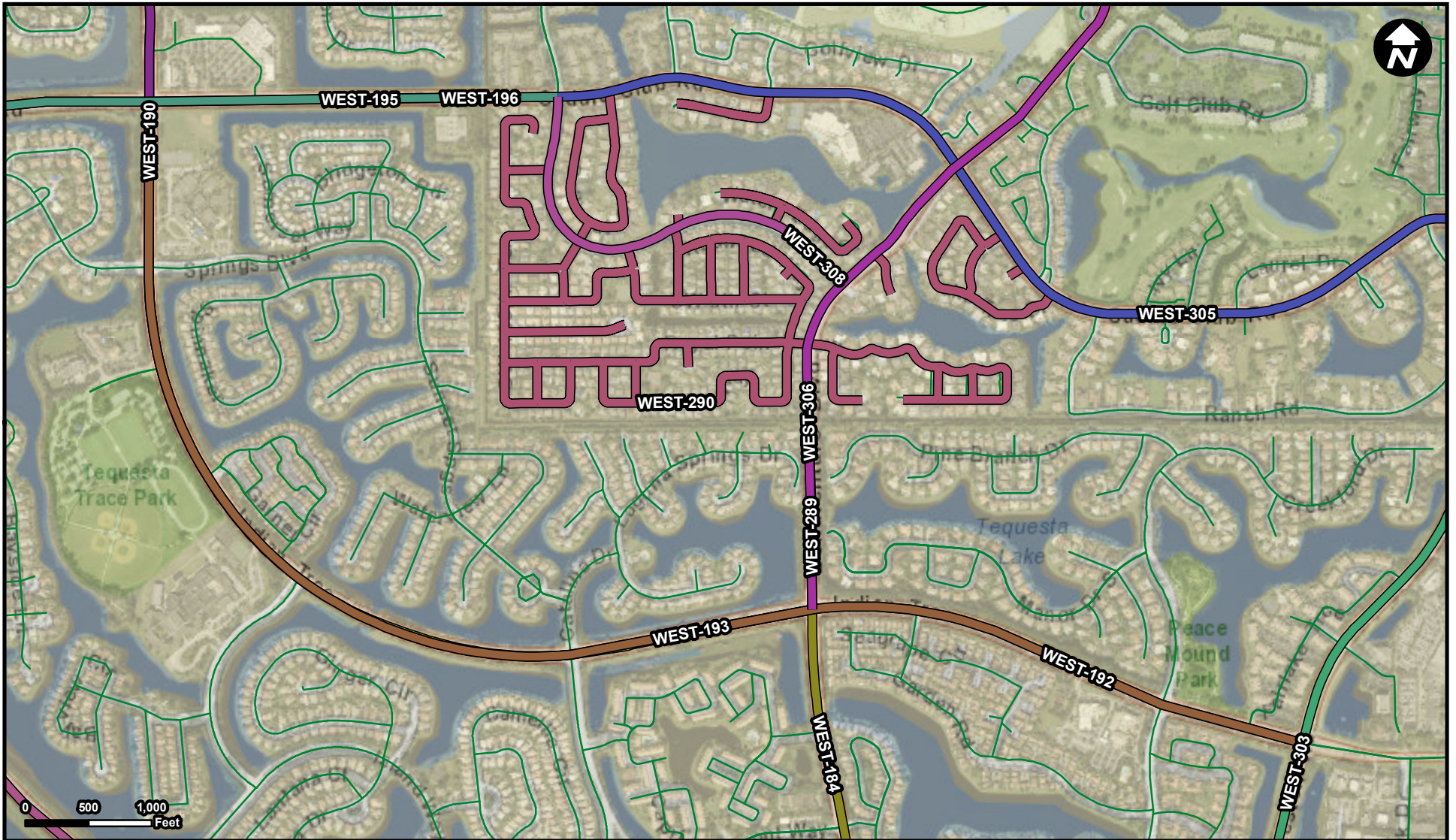
Project Description & Project Scope

Design and roadway repaving to improve transportation, roads and signalization

Design of Improvements for ADA accessible ramps, sidewalks and re-construction of asphaltic roadway surface for bike lanes and vehicular traffic with associated pavement markings and signage.

WEST-193

Project Name
Indian Trace Road Roadway Improvements



Legend

	WEST-184		WEST-196		WEST-306
	WEST-190		WEST-289		WEST-308
	WEST-191		WEST-290		Municipality
	WEST-192		WEST-303		Unincorporated
	WEST-193		WEST-304		
	WEST-195		WEST-305		

Suggested Work Mix:
Primary Work Mix:
Secondary Work Mix:

Bicycle Pedestrian Infrastructure
Bike Lane Sidewalk

FROM: Indian Trace at SW 160 Avenue
To: Indian Trace at Saddle Club Road



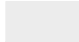
Project Description & Project Scope

Design and roadway repaving to improve transportation, roads and signalization

Construction of Improvements for ADA accessible ramps, sidewalks and re-construction of asphaltic roadway surface for bike lanes and vehicular traffic with associated pavement markings and signage.



Legend

-  WEST-194
-  Municipality
-  Unincorporated

Suggested Work Mix: Traffic Circles, Speed Tables, Intersection Improvements

Primary Work Mix: Add Lanes

Secondary Work Mix: Safety Project

FROM:
To:

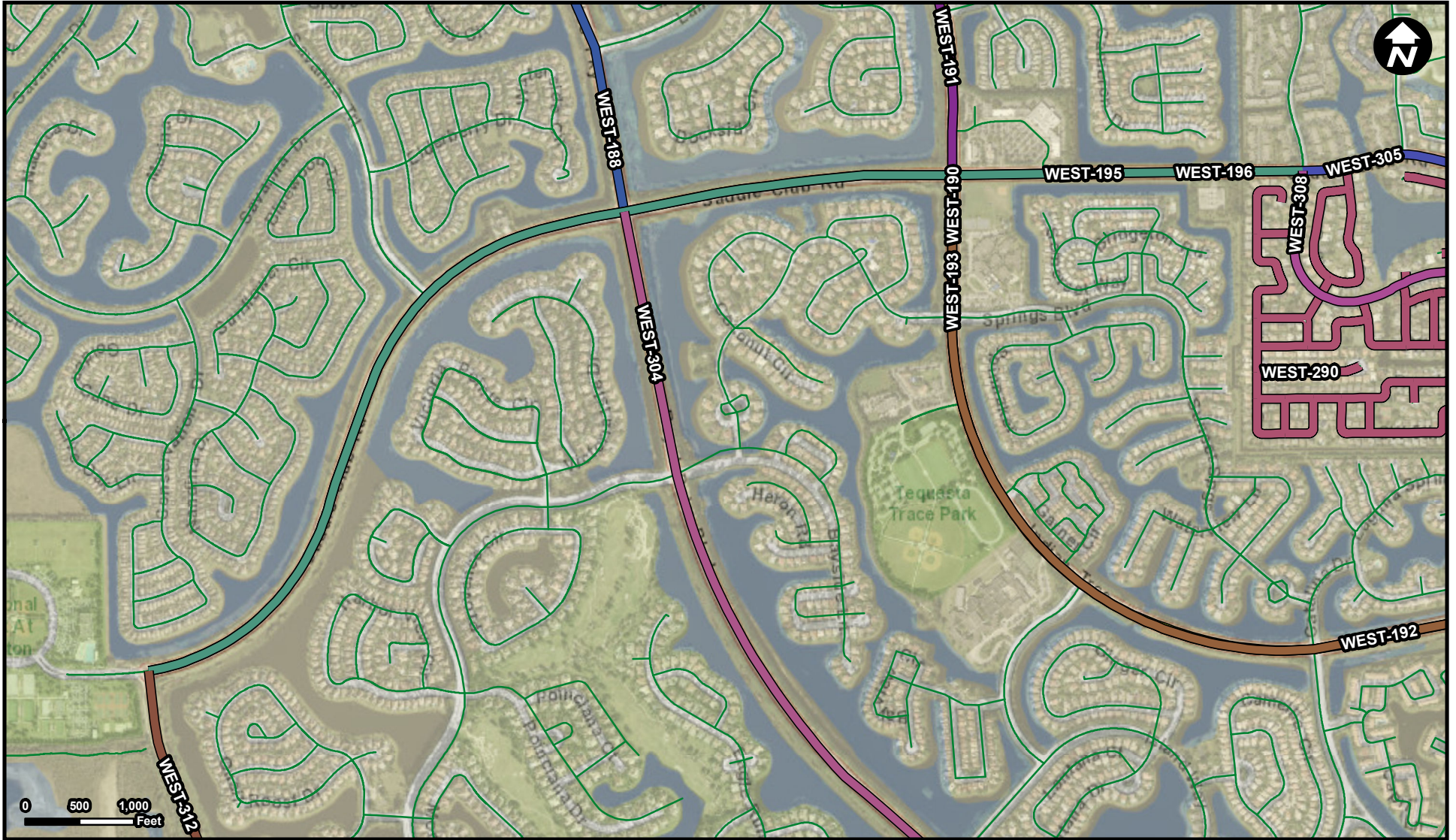
Project Description & Project Scope

Creation of a Cul-de-sac in conjunction with the C-11 Impoundment Project including roadway and street light construction

Construction of Cul-de-sac on Manatee Isles Drive (aka SW 36 St) at 202 Avenue for turn-around for emergency and first responder fire rescue vehicles and apparatus due to close of SW 36 St for C-11 Impoundment Project

WEST-195

Project Name
Saddle Club Road Roadway Improvements



Legend

	WEST-188		WEST-196		Municipality
	WEST-190		WEST-290		Unincorporated
	WEST-191		WEST-304		
	WEST-192		WEST-305		
	WEST-193		WEST-308		
	WEST-195		WEST-312		

Suggested Work Mix: Bicycle Pedestrian Infrastructure
Primary Work Mix: Bike Lane Sidewalk
Secondary Work Mix: Signing/Pavement

FROM: Saddle Club at South Post Road
To: Saddle Club at Lakeview Drive

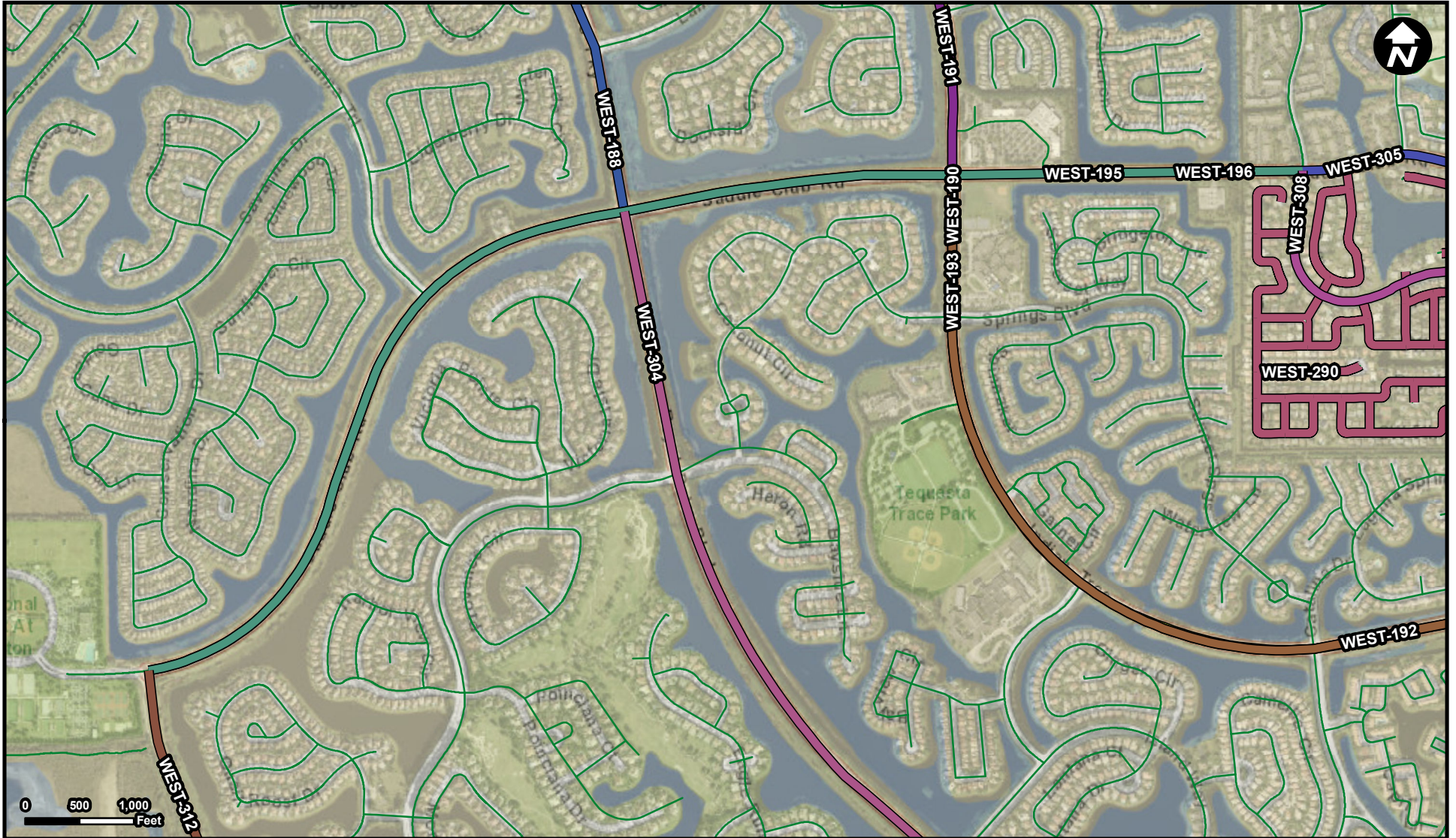
Project Description & Project Scope

Design and roadway repaving to improve transportation, roads and signalization

Construction of Improvements for ADA accessible ramps, sidewalks and re-construction of asphaltic roadway surface for bike lanes and vehicular traffic with associated pavement markings and signage.

WEST-196

Project Name
Saddle Club Road Roadway Improvements



Legend

	WEST-188		WEST-196		Municipality
	WEST-190		WEST-290		Unincorporated
	WEST-191		WEST-304		
	WEST-192		WEST-305		
	WEST-193		WEST-308		
	WEST-195		WEST-312		

Suggested Work Mix: Bicycle Pedestrian Infrastructure

Primary Work Mix:

Secondary Work Mix:

Project Description & Project Scope

Design and roadway repaving to improve transportation, roads and signalization

Construction of Improvements for ADA accessible ramps, and re-construction of asphaltic roadway surface for bike lanes and vehicular traffic with associated pavement markings and signage.

FROM: Saddle Club Road at South Post Road

To: Saddle Club at Lakeview Drive



Legend

- WEST-222
- WEST-312
- Municipality
- Unincorporated

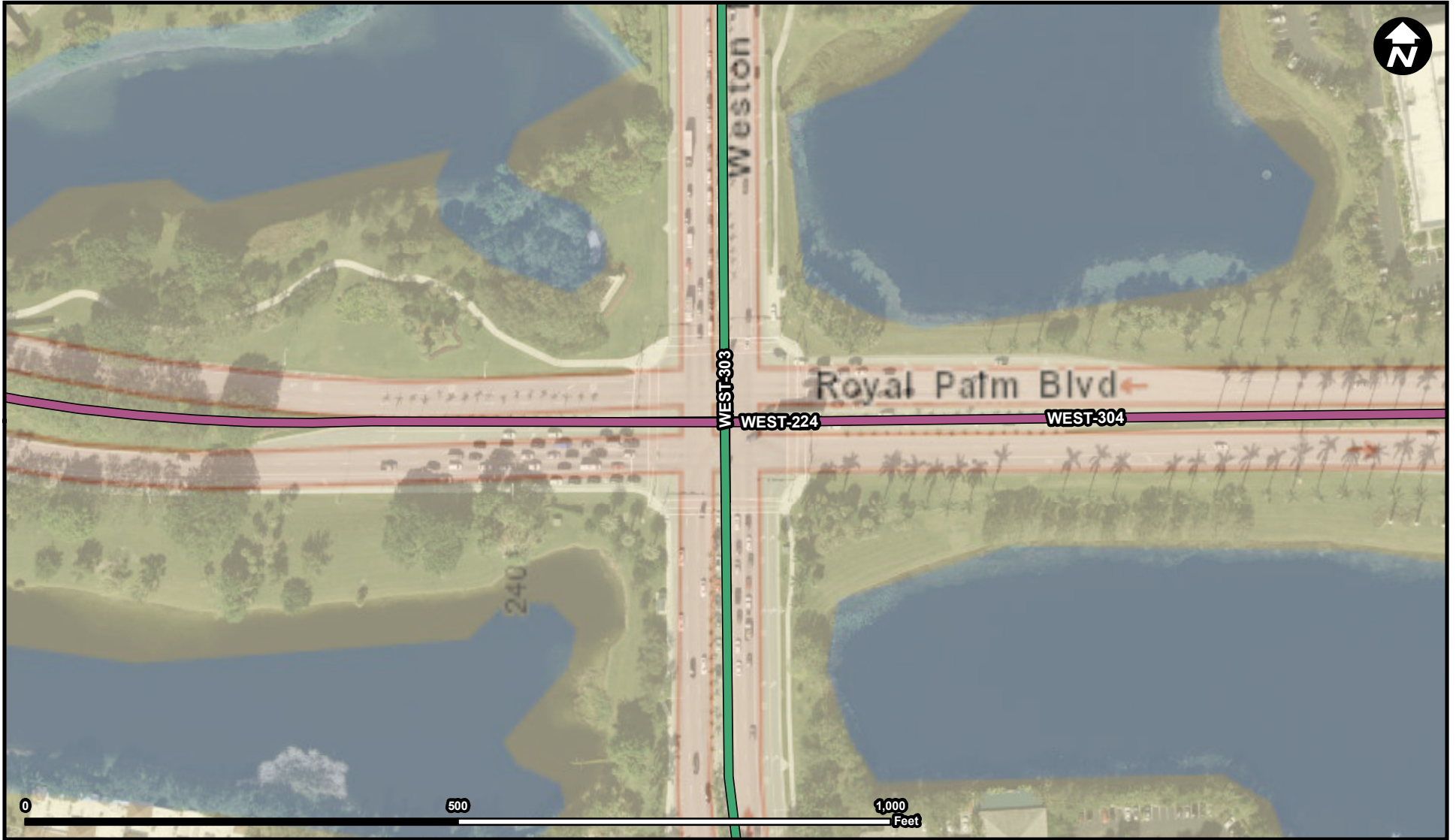
Suggested Work Mix: Signal Enhancement
Primary Work Mix: Traffic Signals
Secondary Work Mix: Safety Project

Project Description & Project Scope

Traffic intersection improvements including signal or roundabout at Manatee Isles Drive and South Post Road

Construction of Traffic Signal at Manatee Isles Drive and South Post Road

FROM:
To:



Legend

- WEST-224
- WEST-303
- WEST-304
- Municipality
- Unincorporated

Suggested Work Mix: Traffic Circles, Speed Tables, Intersection Improvements

Primary Work Mix: Intersection

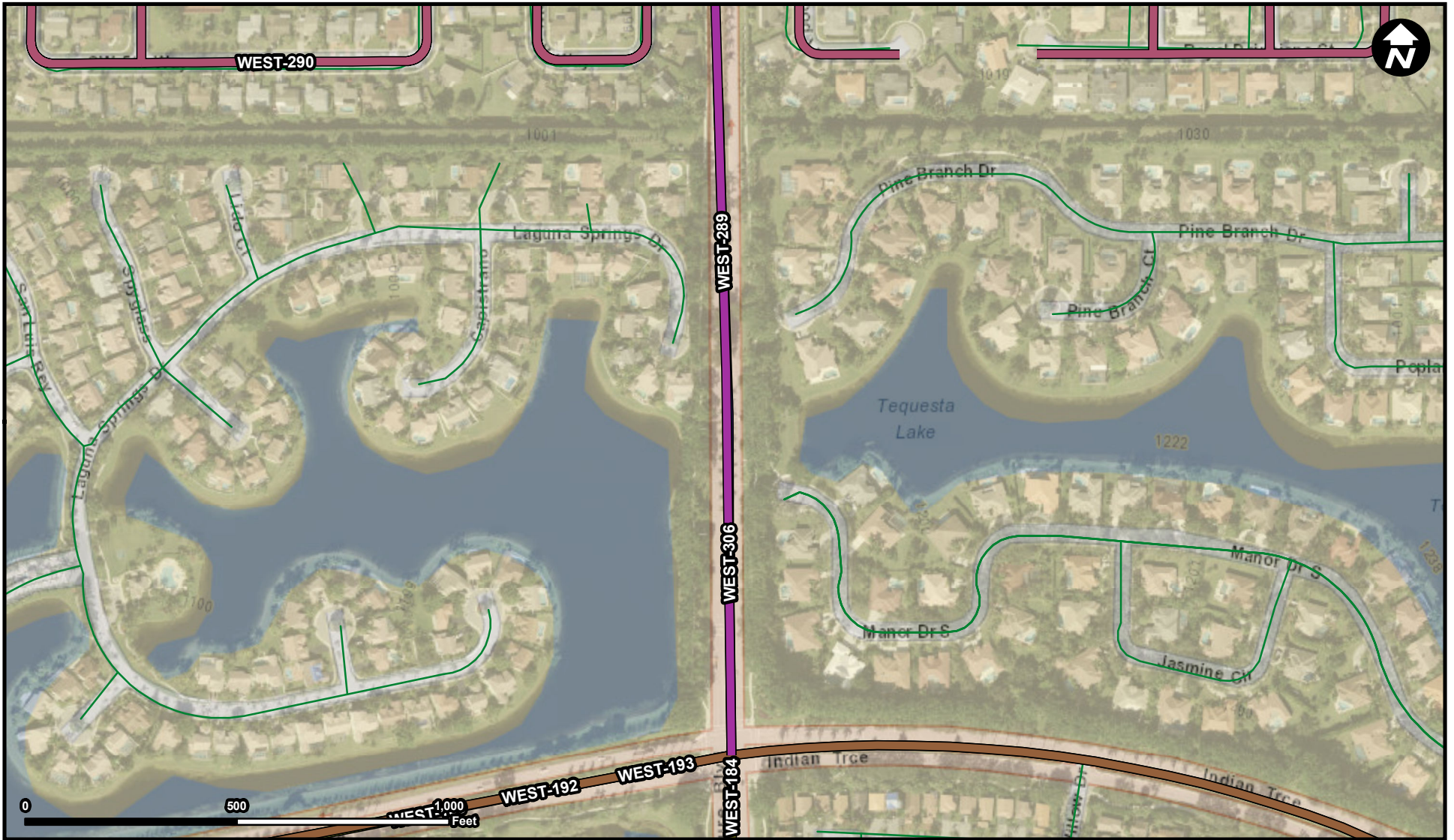
Secondary Work Mix:

FROM:
To:

Project Description & Project Scope

Intersection improvements of Weston Road and Royal Palm Blvd

Converting one Westbound through lane to a Southbound left turn lane to provide triple lefts on the east leg of Royal Palm Blvd. Widening and median reconstruction on west leg of Royal Palm Blvd. to provide a striped buffer between through lanes and dual



Legend

- WEST-184
- WEST-190
- WEST-192
- WEST-193
- WEST-289
- WEST-290
- WEST-306
- Municipality
- Unincorporated

Suggested Work Mix: Resiliency Improvements
Primary Work Mix: Add Lanes
Secondary Work Mix:

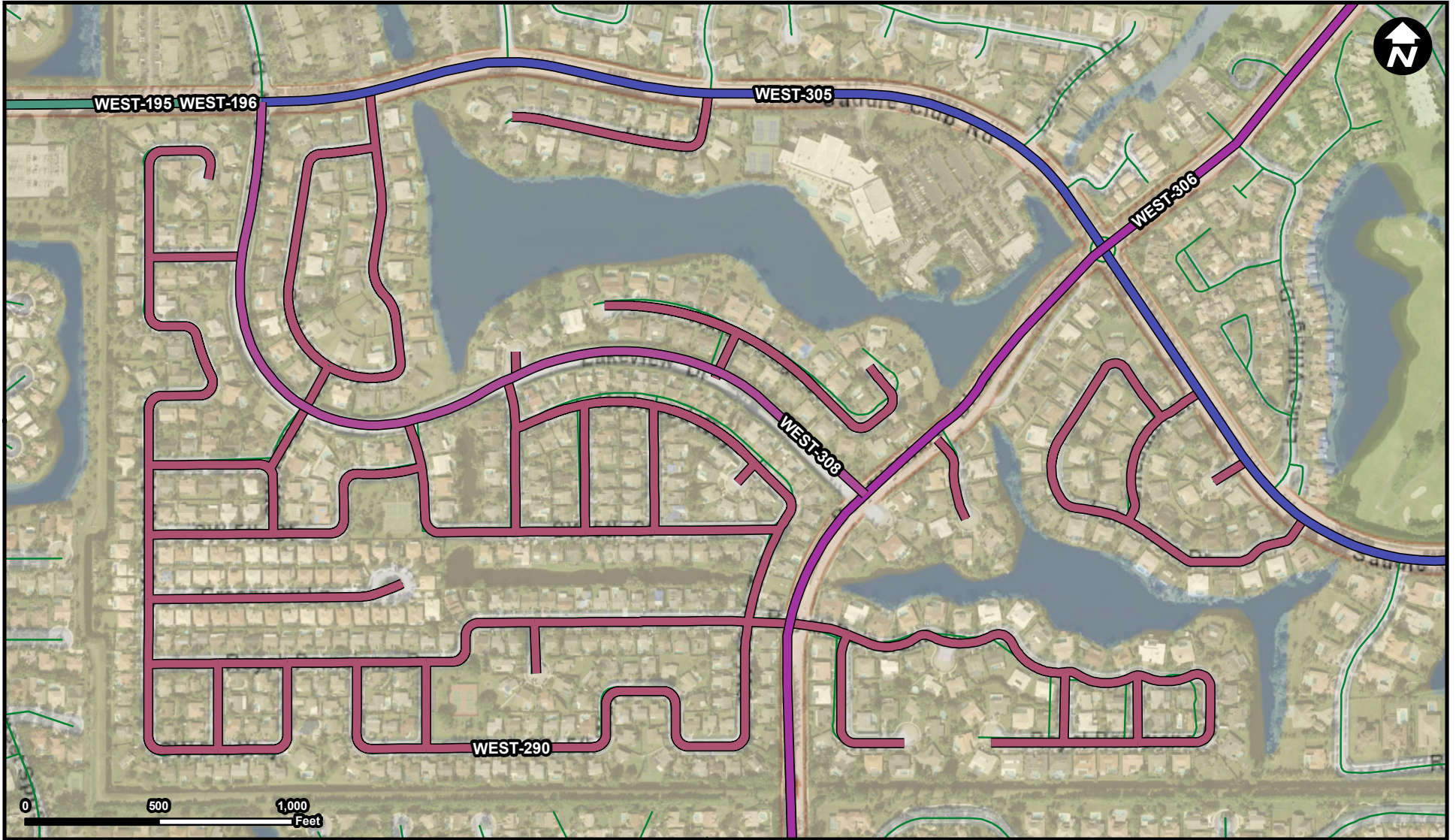
FROM: Bonaventure Blvd North of Indian Trace
To: Bonaventure Blvd at Canal

Project Description & Project Scope

Construction of additional storm water system facilities to improve drainage in rights-of-way.
 Construction of additional stormwater facilities on Bonaventure Road, a major arterial within the City and primary route between BDD and ITDD districts of the City of Weston.

WEST-290

Project Name
Bonaventure Stormwater Improvement



Legend

- WEST-195
- WEST-308
- WEST-196
- Municipality
- WEST-289
- Unincorporated
- WEST-290
- WEST-305
- WEST-306

Suggested Work Mix: Resiliency Improvements
Primary Work Mix: Add Lanes
Secondary Work Mix:

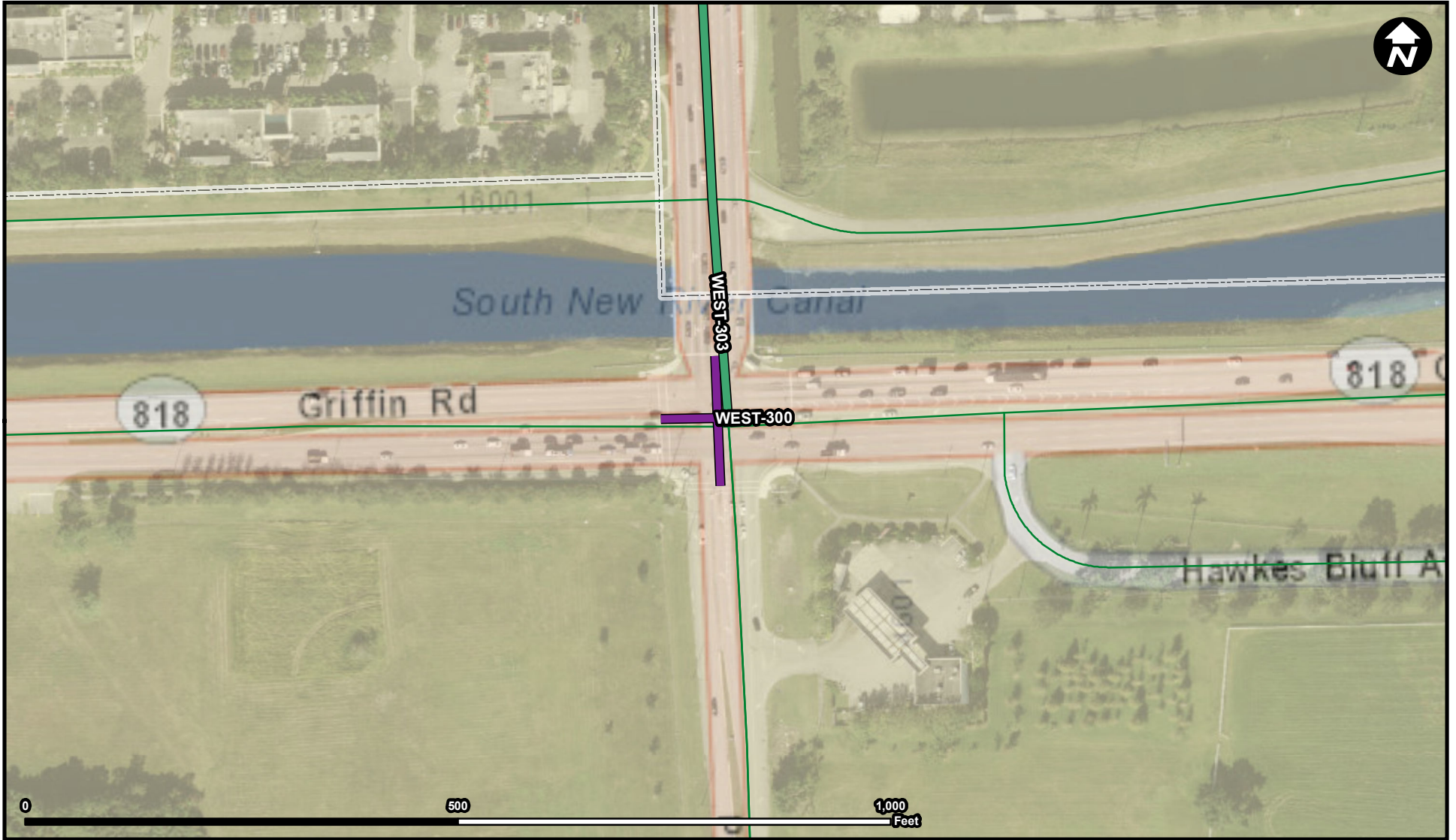
FROM:
To:

Project Description & Project Scope

Construction of additional stormwater system facilities to improve drainage in rights-of-way.

Construction of additional stormwater system facilities to improve drainage in rights-of-way, ADA accessible ramps and sidewalk re-construction.

WEST-300



Legend

- WEST-300
- WEST-303
- Municipality
- Unincorporated

Suggested Work Mix: Traffic Circles, Speed Tables, Intersection Improvements

Primary Work Mix: Intersection

Secondary Work Mix: Add Turn Lane

FROM:

To:

Project Description & Project Scope Construction of 2nd WBRTL including signal modifications

Construction of 2nd WBRTL

WEST-301

<BOL>Project Name</BOL>
Racquet Club Rd & Blatt Blvd Roundabout



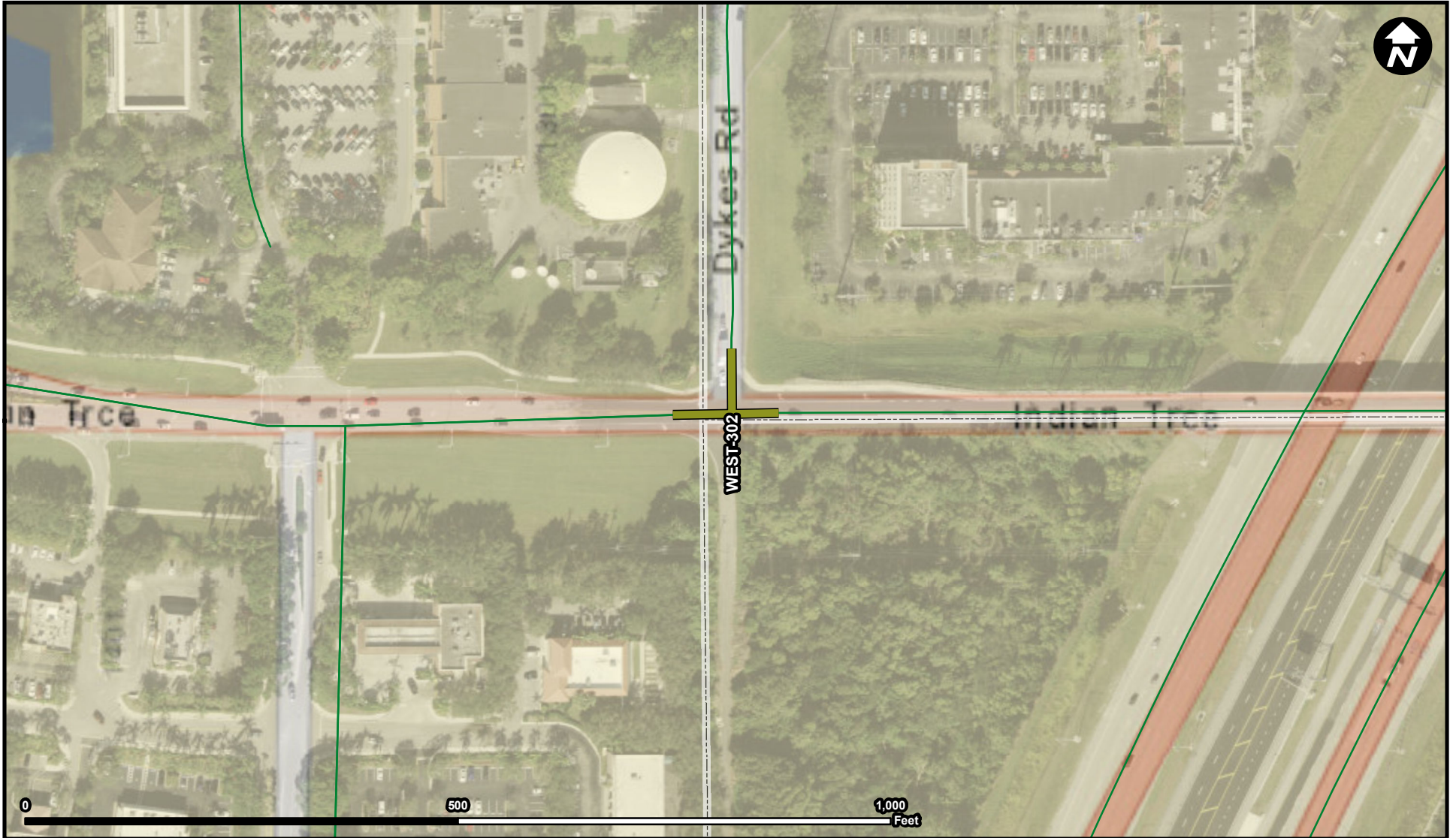
Legend

- WEST-301
- Municipality
- Unincorporated



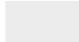
Suggested Work Mix: Traffic Circles, Speed Tables, Intersection Improvements
Primary Work Mix: Safety Project
Secondary Work Mix: Intersection

FROM:
To:

Project Description & Project Scope Conversion of 4-way stop controlled intersection to Traffic Circle
 Design and Construction of Traffic Roundabout at Racquet Club Road and Blatt Blvd



Legend

-  WEST-302
-  Municipality
-  Unincorporated

Suggested Work Mix: Traffic Circles, Speed Tables, Intersection Improvements

Primary Work Mix: Intersection

Secondary Work Mix: Add Lanes

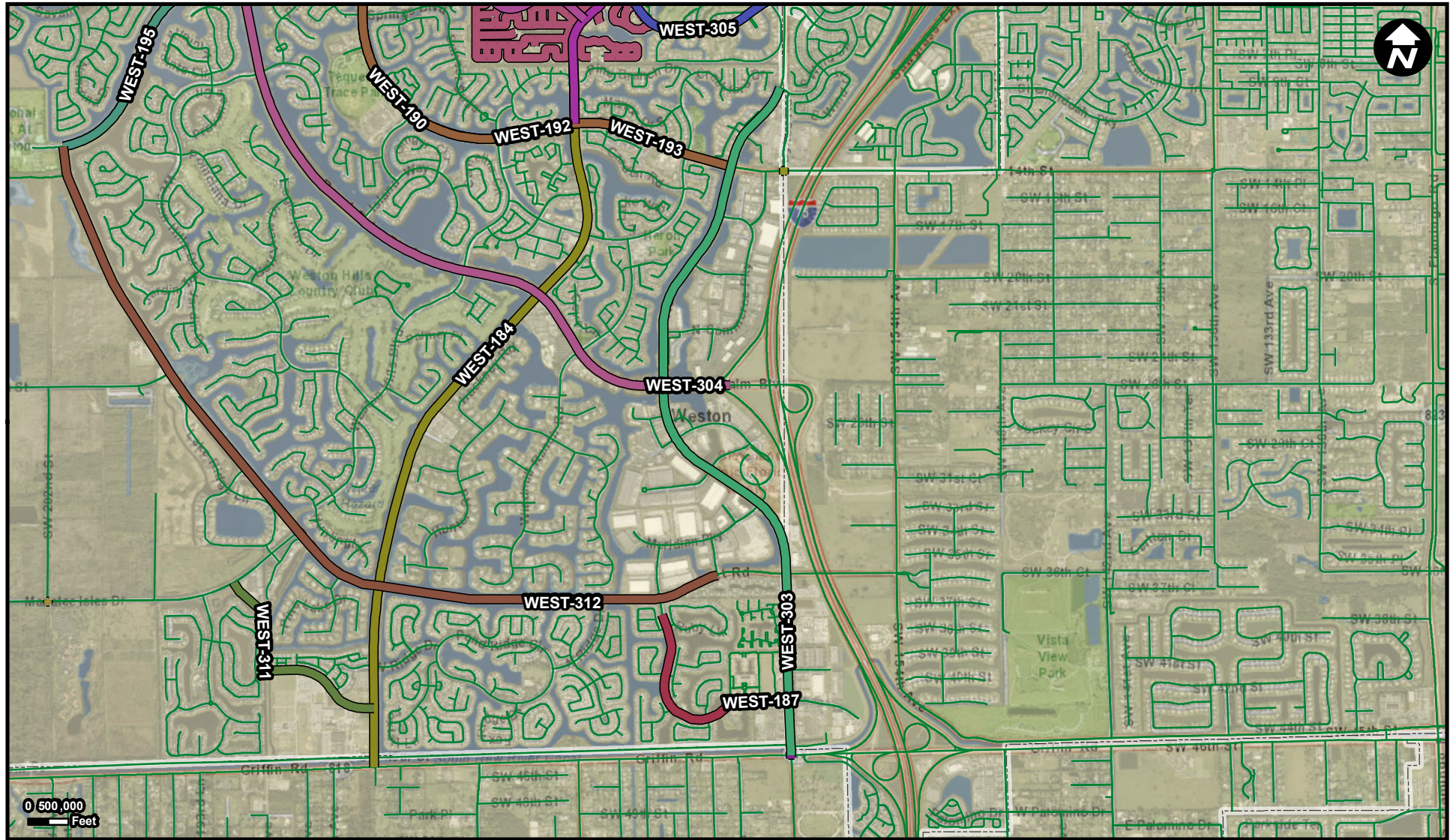
FROM:
To:

Project Description & Project Scope Intersection Safety Improvements (Geometry and Alignment)

Intersection safety improvements at Indian Trace @ SW 160th Avenue
26.102330, -80.362619

WEST-303

Project Name
Weston Rd Corridor RRR



Legend

	WEST-184		WEST-195		WEST-300		WEST-308
	WEST-187		WEST-196		WEST-302		WEST-311
	WEST-190		WEST-222		WEST-303		WEST-312
	WEST-192		WEST-224		WEST-304		Municipality
	WEST-193		WEST-289		WEST-305		Unincorporated
	WEST-194		WEST-290		WEST-306		

Suggested Work Mix: Bicycle Pedestrian Infrastructure

Primary Work Mix:

Secondary Work Mix: Bike Lane Sidewalk

Project Description & Project Scope

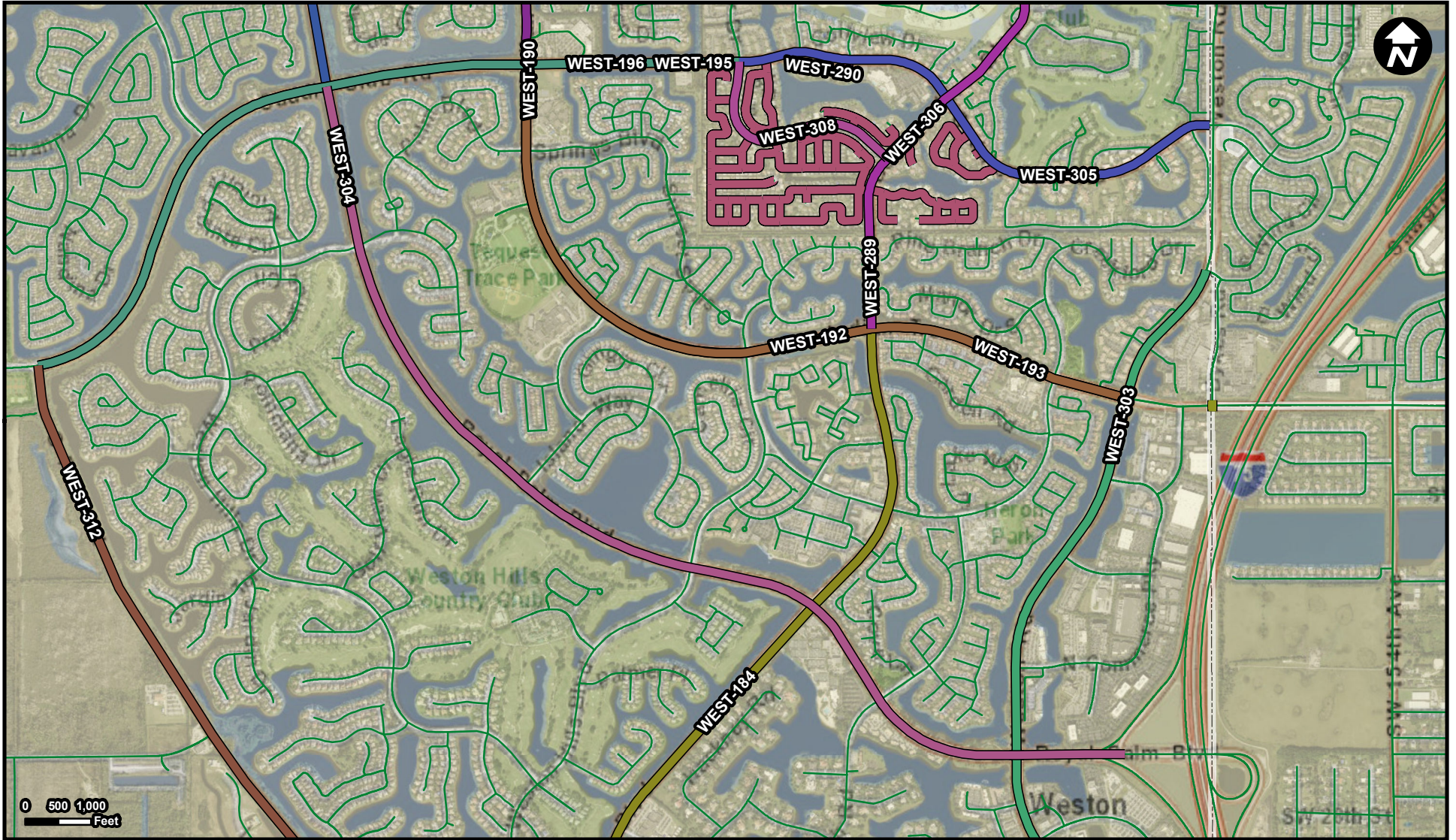
RRR of 4-Lane divided roadway including bike lanes

Construction of Improvements for ADA accessible ramps, sidewalks and re-construction of asphaltic roadway surface for bike lanes and vehicular traffic with associated pavement markings and signage.

FROM: Weston Road At Griffin Road
To: Weston Road at S New River Circle

WEST-304

Project Name
Royal Palm Blvd RRR



Legend

	WEST-184		WEST-195		WEST-303		Municipality
	WEST-188		WEST-196		WEST-304		Unincorporated
	WEST-190		WEST-224		WEST-305		
	WEST-191		WEST-289		WEST-306		
	WEST-192		WEST-290		WEST-308		
	WEST-193		WEST-302		WEST-312		

Suggested Work Mix:

Primary Work Mix:

Secondary Work Mix:

Bicycle Pedestrian Infrastructure

Add Lanes

Bike Lane Sidewalk

FROM: Royal Palm Blvd at Weston Road

To: Royal Palm Blvd at Saddle Club Road

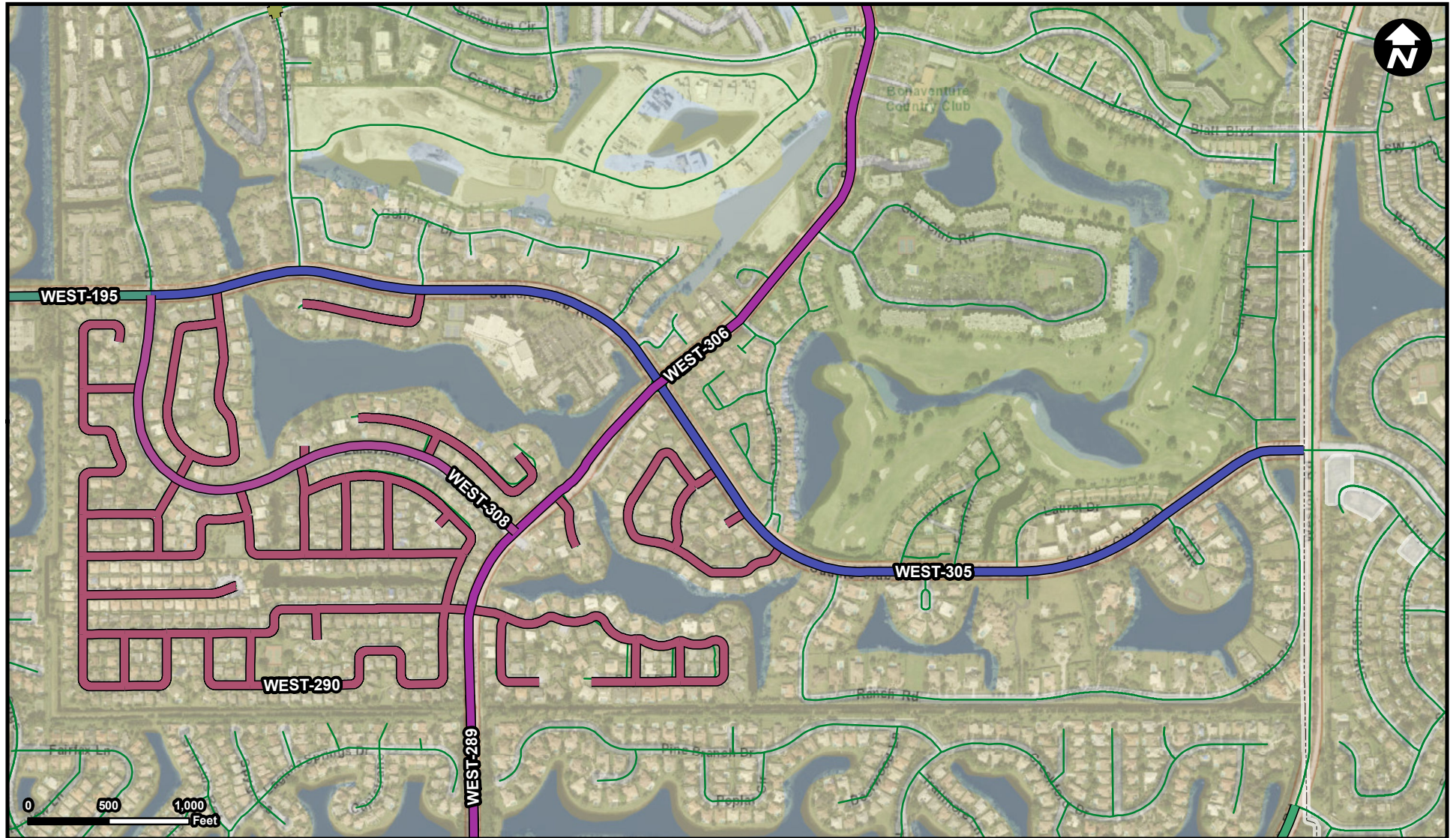
Project Description & Project Scope

RRR of 4-Lane divided roadway including bike lanes

Construction of Improvements for ADA accessible ramps, sidewalks and re-construction of asphaltic roadway surface for bike lanes and vehicular traffic with associated pavement markings and signage.

WEST-305

Project Name
Saddle Club Road Bike Lanes



Legend



Suggested Work Mix: Bicycle Pedestrian Infrastructure
Primary Work Mix: Bike Lane Sidewalk
Secondary Work Mix:

FROM: Saddle Club from Lakeview Drive
To: Saddle Club Road at Weston Road

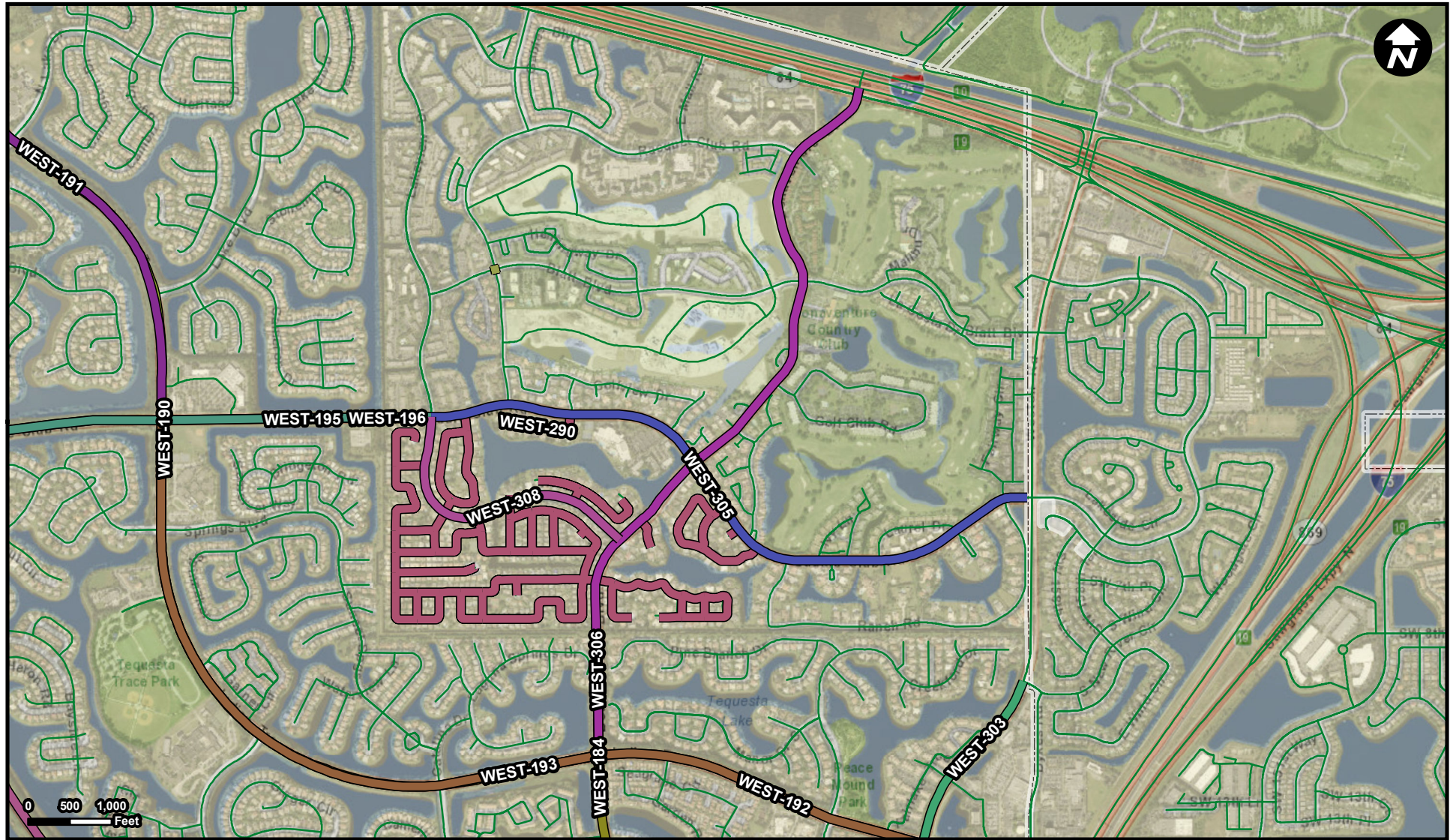
Project Description & Project Scope

Construction of 5' bike lanes from Lake View Dr to Weston Rd

Construction of Bike Lanes on Saddle Club Road between Lakeview Drive and Weston Road in accordance with City of Weston Bike Master Plan

WEST-306

Project Name
Bonaventure Blvd Bike Lanes



Legend

	WEST-184		WEST-196		WEST-305
	WEST-190		WEST-289		WEST-306
	WEST-191		WEST-290		WEST-308
	WEST-192		WEST-301		Municipality
	WEST-193		WEST-303		Unincorporated
	WEST-195		WEST-304		

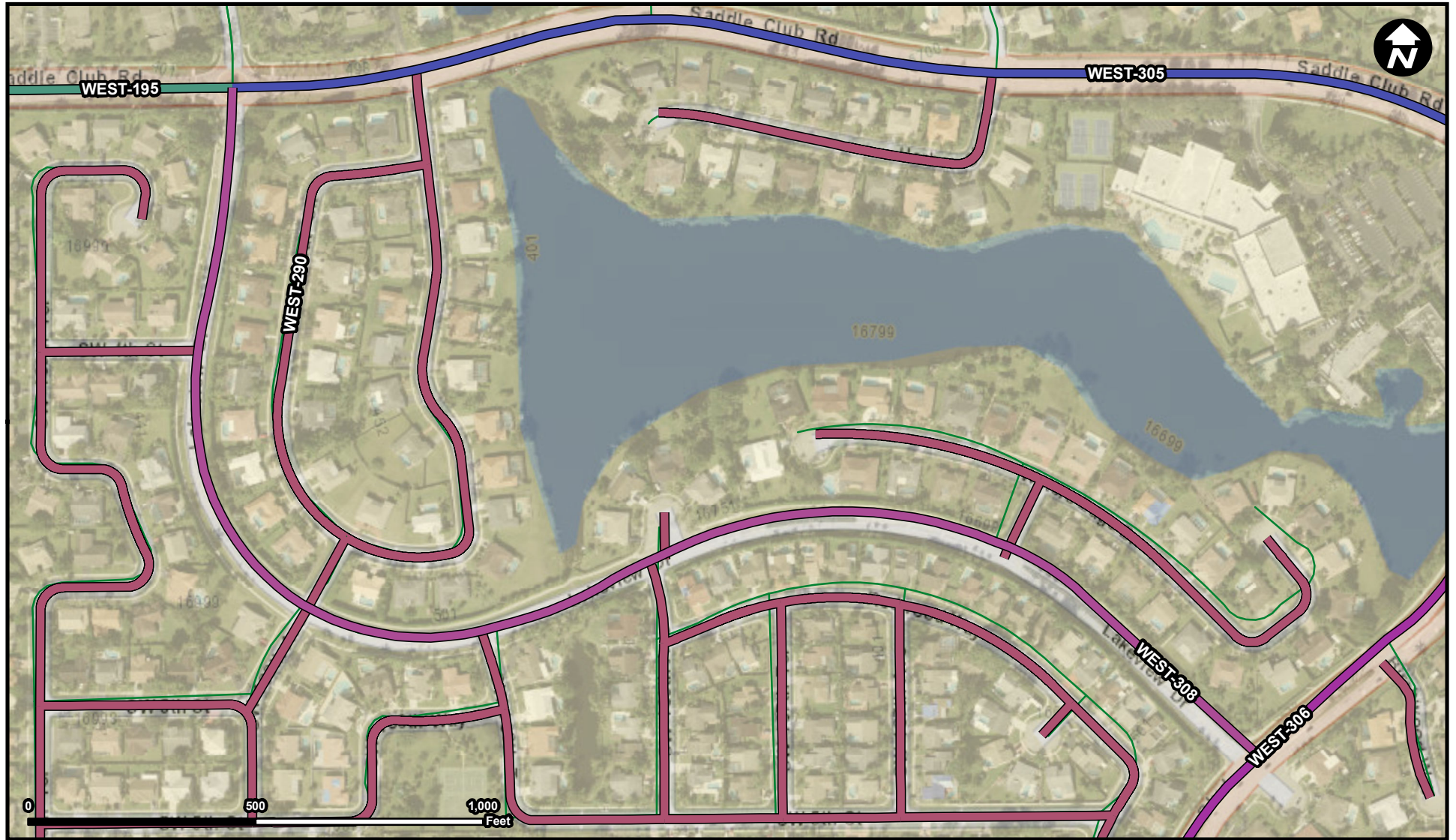
Suggested Work Mix: Bicycle Pedestrian Infrastructure
Primary Work Mix: Bike Lane Sidewalk
Secondary Work Mix: Signing/Pavement

FROM: Bonaventure Blvd at Indian Trace
To: Bonaventure Blvd at SR84

Project Description & Project Scope
 Construction of 5' bike lanes from Indian Trace to SR 84
 Construction of Bike lanes for connectivity to City Master Bike Plan

WEST-308

Project Name
Indian Trace Elementary School



Legend

- WEST-195 Municipality
- WEST-196 Unincorporated
- WEST-290
- WEST-305
- WEST-306
- WEST-308

Suggested Work Mix: Bicycle Pedestrian Infrastructure
Primary Work Mix: Bike Lane Sidewalk
Secondary Work Mix: Safety Project

FROM: Lakeview Dr at Saddle Club Road
To: Lakeview Dr at Bonaventure Blvd

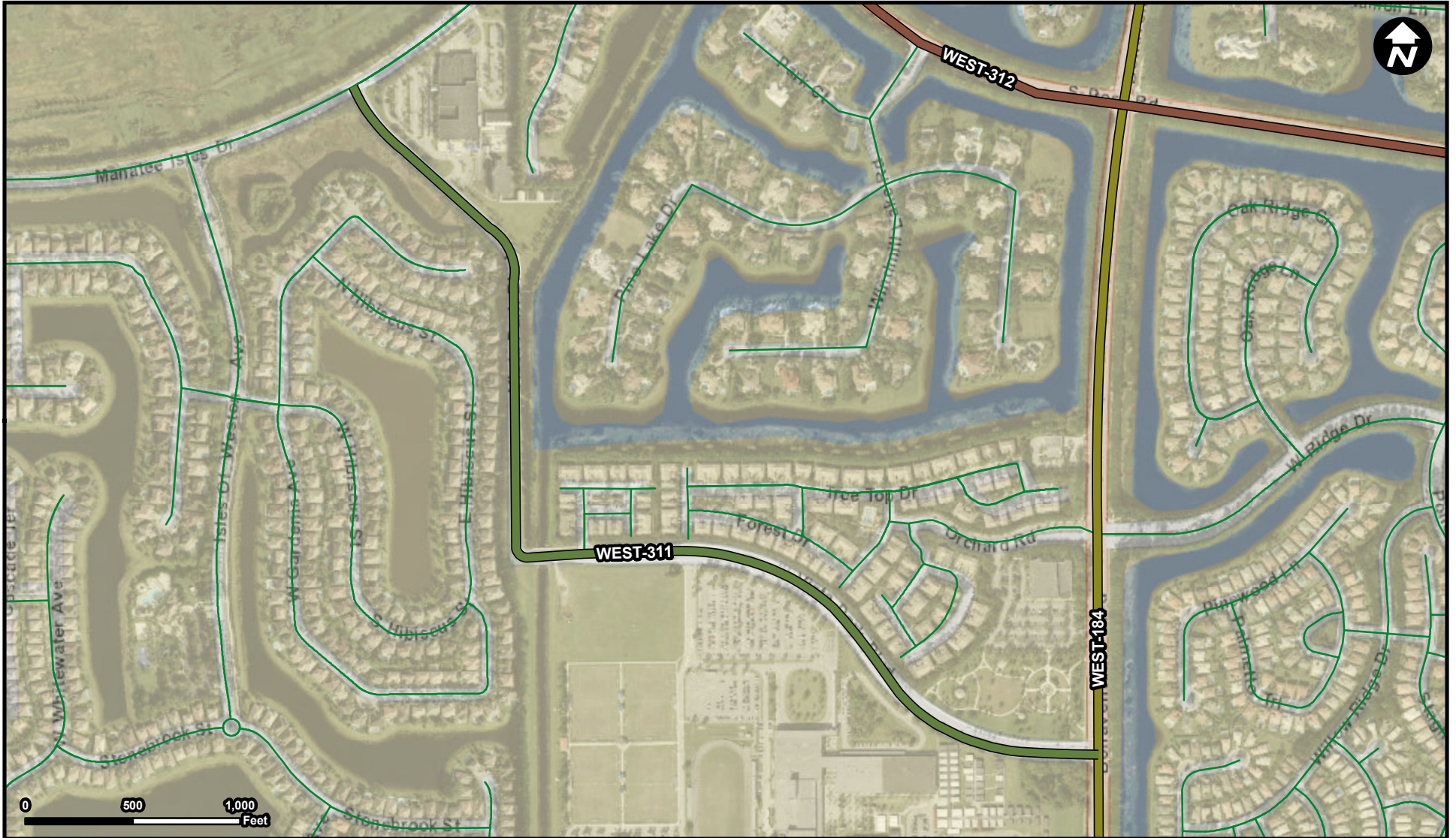
Project Description & Project Scope

School Zone Safety Improvements / Lake view Dr, Royal Poinciana, Saddle Club Rd

Construction of sidewalk connectivity and ADA accessible ramps to school route to Indian Trace Elementary on Lakeview Drive

WEST-311

Project Name
Vista Park Blvd. RRR



Legend

- WEST-184
- WEST-311
- WEST-312
- Municipality
- Unincorporated

Suggested Work Mix: Bicycle Pedestrian Infrastructure
Primary Work Mix:
Secondary Work Mix: Sidewalk

Project Description & Project Scope

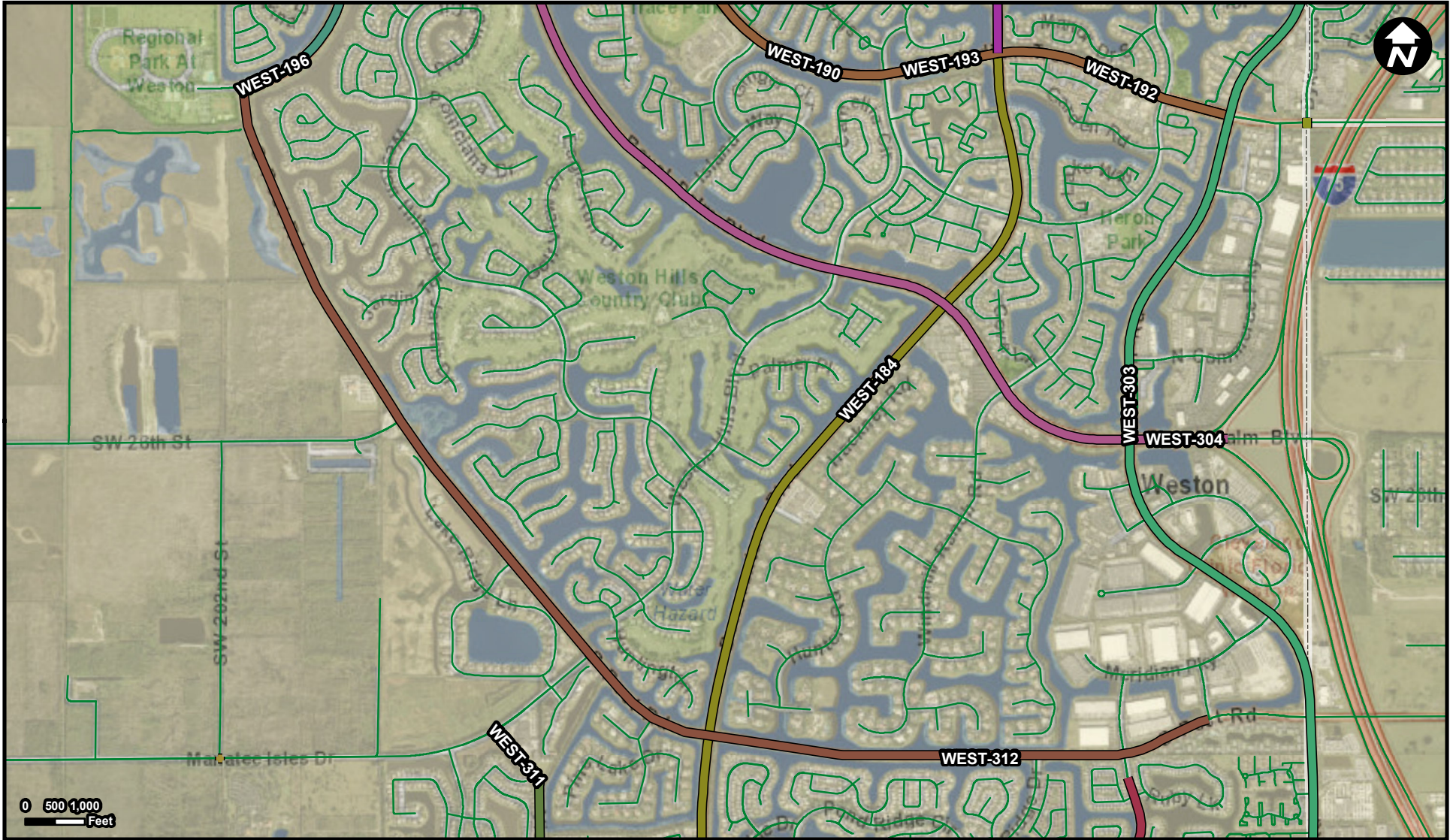
RRR of 2-Lane undivided roadway / 4-Lane divided roadway

Construction of Improvements for ADA accessible ramps, sidewalks and re-construction of asphaltic roadway surface for bike lanes and vehicular traffic with associated pavement markings and signage.

FROM: Vista Park Blvd at Bonaventure Blvd
To: Vista Park Blvd at Manatee Isle Drive

WEST-312

Project Name
South Post Road - Bike Lane Buffer Lane



Legend

- WEST-184 WEST-195 WEST-303 Unincorporated
- WEST-187 WEST-196 WEST-304
- WEST-190 WEST-222 WEST-306
- WEST-192 WEST-224 WEST-311
- WEST-193 WEST-289 WEST-312
- WEST-194 WEST-302 Municipality

Suggested Work Mix: Bicycle Pedestrian Infrastructure
Primary Work Mix: Bike Lane Sidewalk
Secondary Work Mix: Add Lanes

FROM: South Post Road at Weston Road
To: South Post Road at Saddle Club Road

Project Description & Project Scope
 Widening pavement to accommodate buffer lane for bike path
 Construction of additional roadway surface to accommodate widening for bike lane buffer