

Legend

- POMP-001
- POMP-002
- POMP-007
- POMP-009
- POMP-012
- POMP-013
- POMP-015
- Municipality
- Unincorporated

Suggested Work Mix:

Primary Work Mix:
Secondary Work Mix:

Project Description & Project Scope

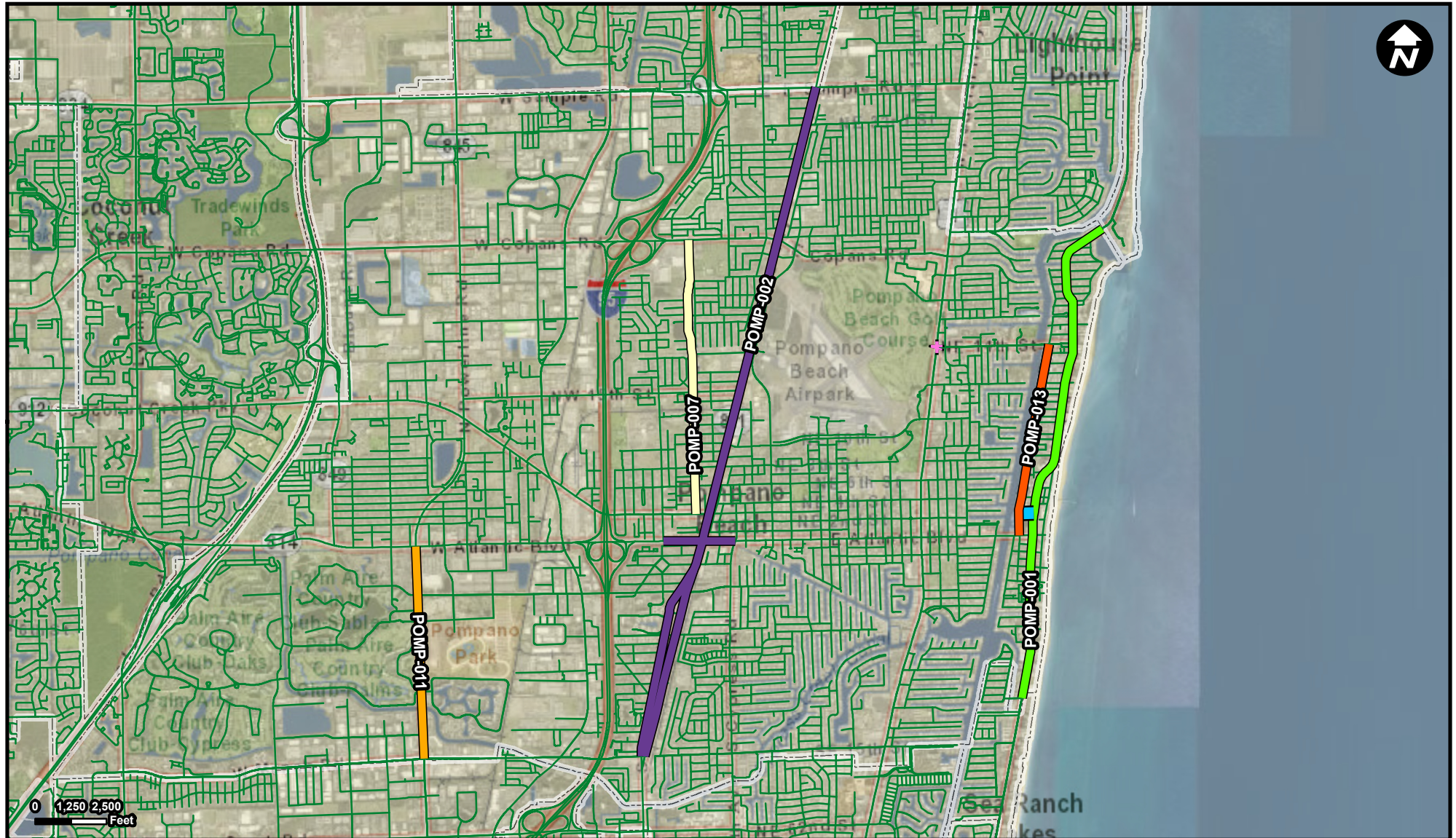
Resiliency Improvements

Bike Lane Sidewalk
Signing/Pavement

Undergrounding overhead utilities on A1A from Hillsboro Inlet to Terra Mar Drive to reduce power outages during storms

Underground overhead utilities; Improvements to include widening sidewalks, bike lanes, traffic calming, lighting and other streetscape improvements.

FROM: Terra Mar Drive (south end of City)
To: Hillsboro Inlet Bridge (north end of City)



Legend

- POMP-001
- POMP-015
- POMP-002
- Municipality
- POMP-007
- Unincorporated
- POMP-009
- POMP-011
- POMP-012
- POMP-013

FROM: Dixie Highway from McNab Road to Sample Road, and Atlantic Boulevard from NW 6th Avenue to Cypress Road
To: Dixie Highway from McNab Road to Sample Road, and Atlantic Boulevard from NW 6th Avenue to Cypress Road

Suggested Work Mix:

Primary Work Mix:
Secondary Work Mix:

Project Description & Project Scope

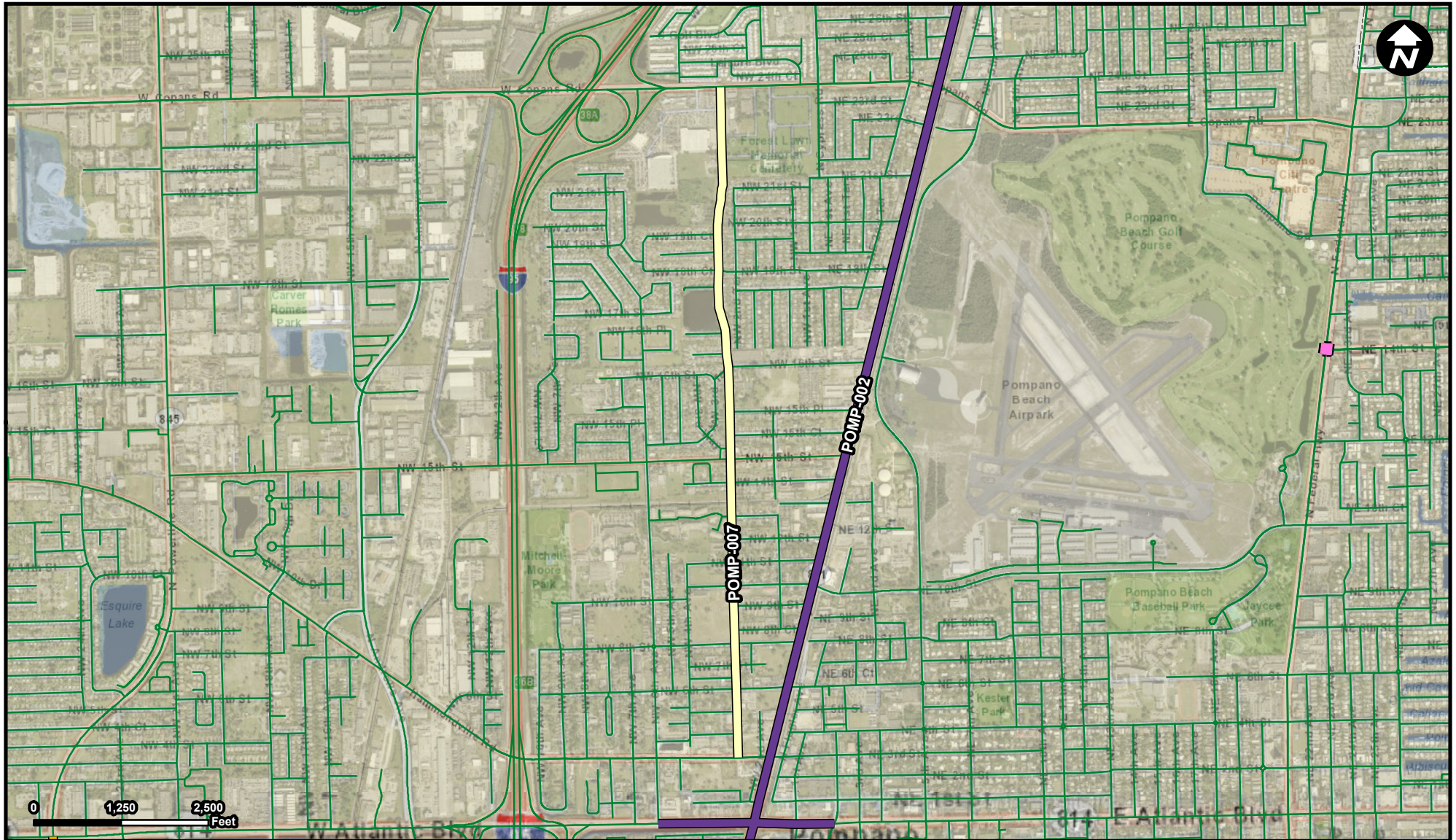
Bicycle Pedestrian Infrastructure

Bike Lane Sidewalk
Transit Improvement

Dixie Highway corridor from McNab Road to Sample Road, Atlantic Boulevard from NW 6 Avenue to Cypress Road. crossing improvements, bicycle lanes, medians, sidewalks, lighting, landscaping

This project entails design and construction of infrastructure on Dixie Highway from McNab Road to Sample Road (5 miles) as well Atlantic Boulevard from NW 6th Avenue to Cypress Road.

The City of Pompano



Legend

- POMP-002
- POMP-007
- POMP-011
- POMP-015
- Municipality
- Unincorporated

FROM: MLK Boulevard
To: Copans Road

Suggested Work Mix:

Primary Work Mix:
Secondary Work Mix:

Capacity Increase, Widening
Transit Improvement
Sidewalk





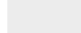
Project Description & Project Scope

Design and construction of infrastructure on, NW 3rd Avenue from MLK Boulevard to Copans Road, a stretch of 1.9 miles. The main objective is to re-build this roadway in its entirety.

This project entails design and construction of infrastructure on, NW 3rd Avenue from MLK Boulevard to Copans Road, a stretch of 1.9 miles. The main objective is to re-build this roadway in its entirety. The existing



Legend

-  POMP-002
-  POMP-007
-  POMP-008
-  Municipality
-  Unincorporated

Suggested Work Mix: Capacity Increase, Widening
Primary Work Mix: New Road Construction
Secondary Work Mix: Sidewalk





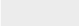
Project Description & Project Scope Design and construction of infrastructure on NW 2nd Avenue, NW 3rd Avenue and a brand new segment connecting both roadways NW 4th Street.

Construction of new roadways within the Downtown TOC to help with connectivity and safety.

FROM:
To:



Legend

-  POMP-001
-  POMP-009
-  POMP-013
-  Municipality
-  Unincorporated

Suggested Work Mix:
Primary Work Mix:
Secondary Work Mix:

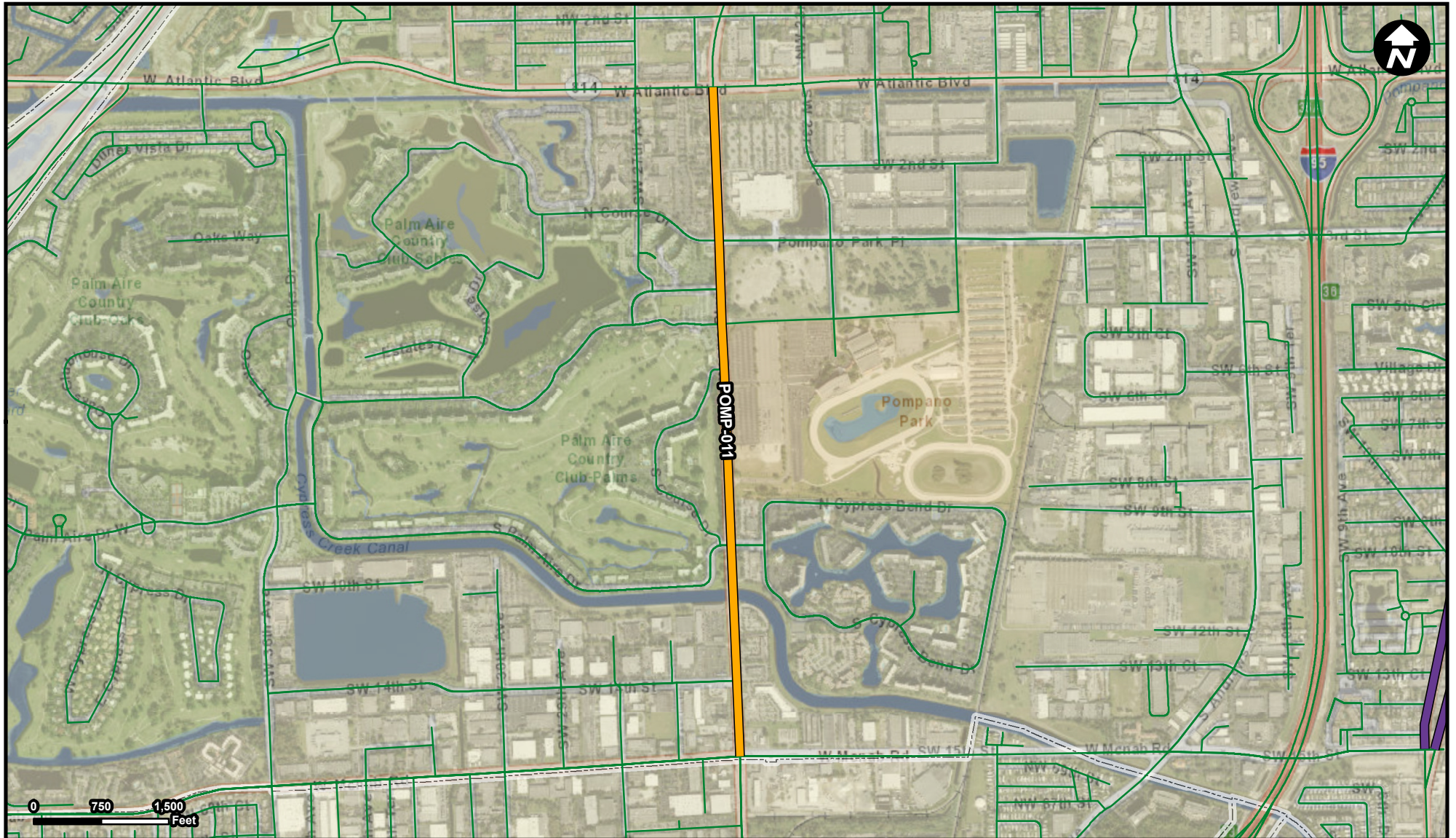
**Capacity Increase, Widening
Parking Facility
Transit Improvement**

Project Description & Project Scope

Design and construction of a 700+ car garage.

This project entails design and construction of a 700+ car garage. The garage is expected to supplement and add parking capacity to the beach area, which is experiencing a renaissance, the product of a large CRA and City investment to update and upgrade

FROM:
To:



Legend

- POMP-002
- POMP-011
- Municipality
- Unincorporated

FROM: McNab Road
To: Atlantic Boulevard

Suggested Work Mix:

- Primary Work Mix:**
- Secondary Work Mix:**

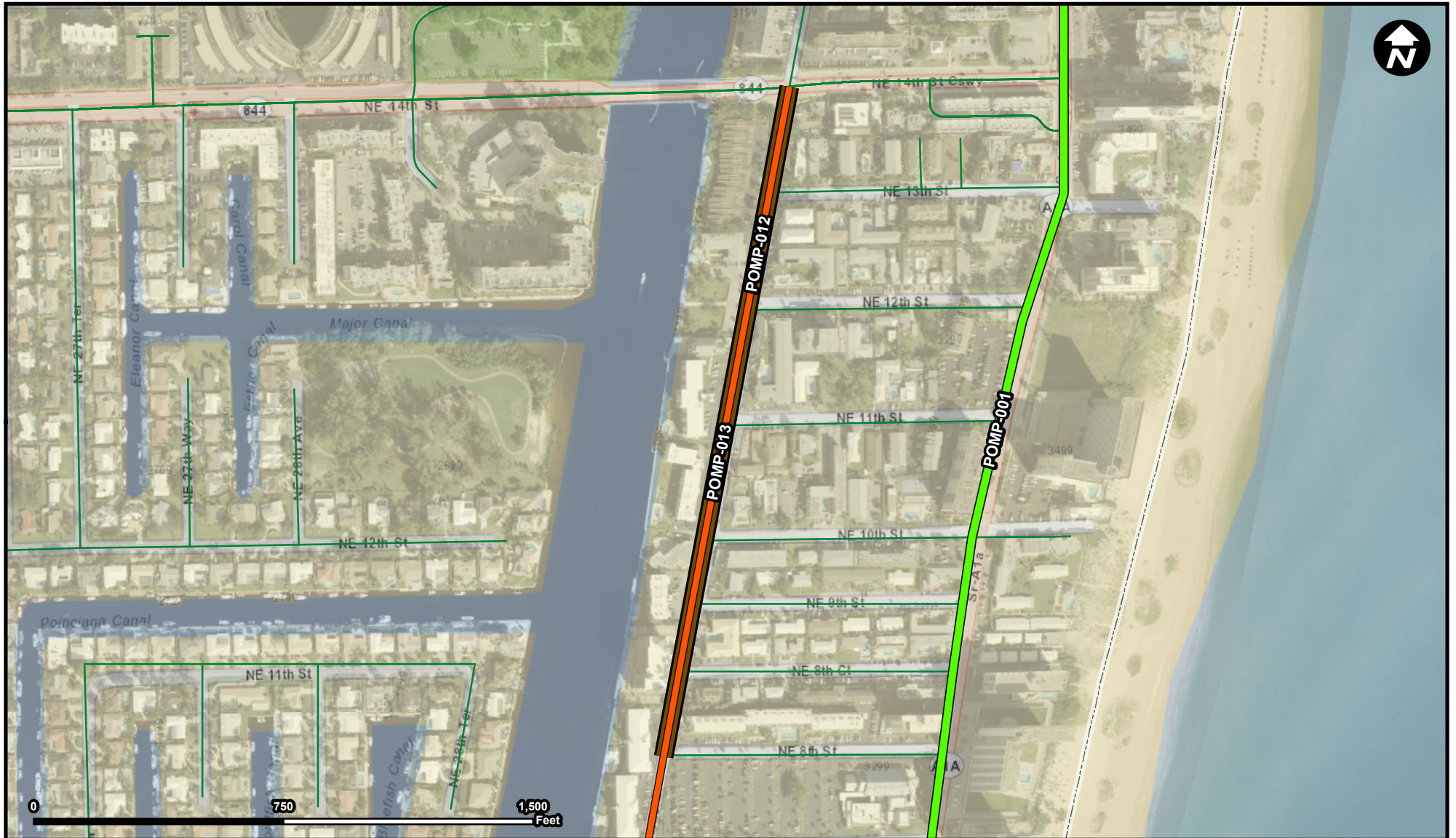
Landscaping, Hardscape, Signage

**Sidewalk
Landscaping**

**Project Description &
Project Scope**

Streetscape improvements including landscaping, paving, benches, and decorative pedestrian lighting on Powerline Road between McNab Road and Atlantic Boulevard

This project consists of streetscape improvements including landscaping, paving, benches, and decorative pedestrian lighting on Powerline Road between McNab Road and Atlantic Boulevard.



Legend

- POMP-001
- POMP-012
- POMP-013
- Municipality
- Unincorporated

FROM:
To:

Suggested Work Mix: Resiliency Improvements

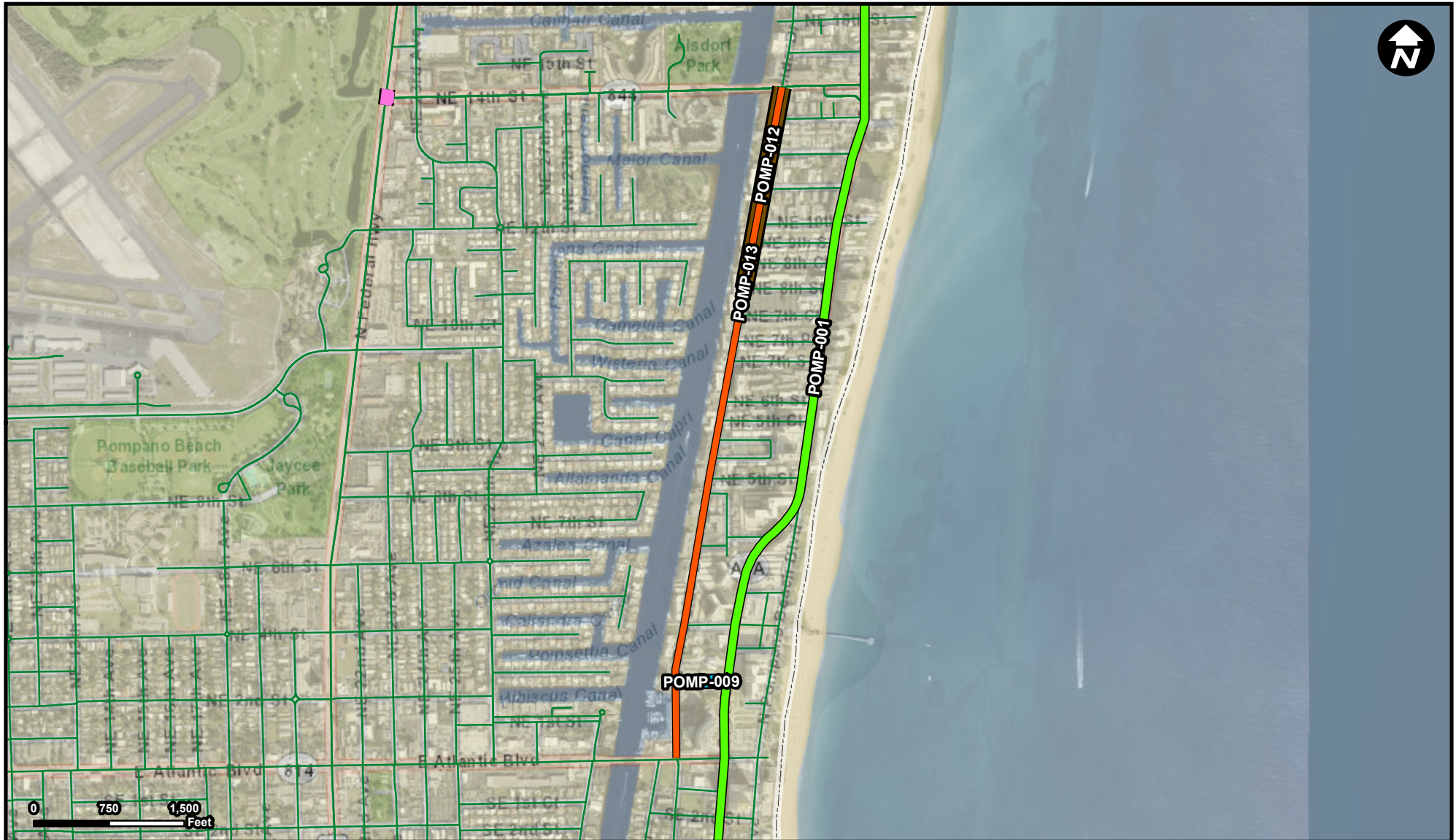
Primary Work Mix:

Secondary Work Mix:

Project Description & Project Scope

North Riverside Drive between NE 14th Street Causeway and NE 8th Street

install storm drain system to mitigate flooding



Legend

- POMP-001
- POMP-009
- POMP-012
- POMP-013
- POMP-015
- Municipality
- Unincorporated

FROM: Atlantic Boulevard
TO: NE 14th Street

Suggested Work Mix:

Primary Work Mix:
Secondary Work Mix:

Bicycle Pedestrian Infrastructure
New Road Construction
Sidewalk



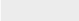
Project Description & Project Scope

This project entails design and construction of infrastructure on Riverside Drive from Atlantic Boulevard to NE 14th Street Causeway.

This project entails design and construction of infrastructure on Riverside Drive including traffic calming, new sidewalks on the east side, improved lighting, additional landscape, roadway realignment.



Legend

-  POMP-015
-  Municipality
-  Unincorporated

Suggested Work Mix: Resiliency Improvements

Primary Work Mix:

Secondary Work Mix:

Project Description & Project Scope

US Highway 1 and NE 14th Street Causeway.

install storm drain piping and associated infrastructure to mitigate flooding

FROM:
To: