

Legend

- PPIN-031
- PPIN-037
- Municipality
- Unincorporated

Suggested Work Mix:
Primary Work Mix:
Secondary Work Mix:

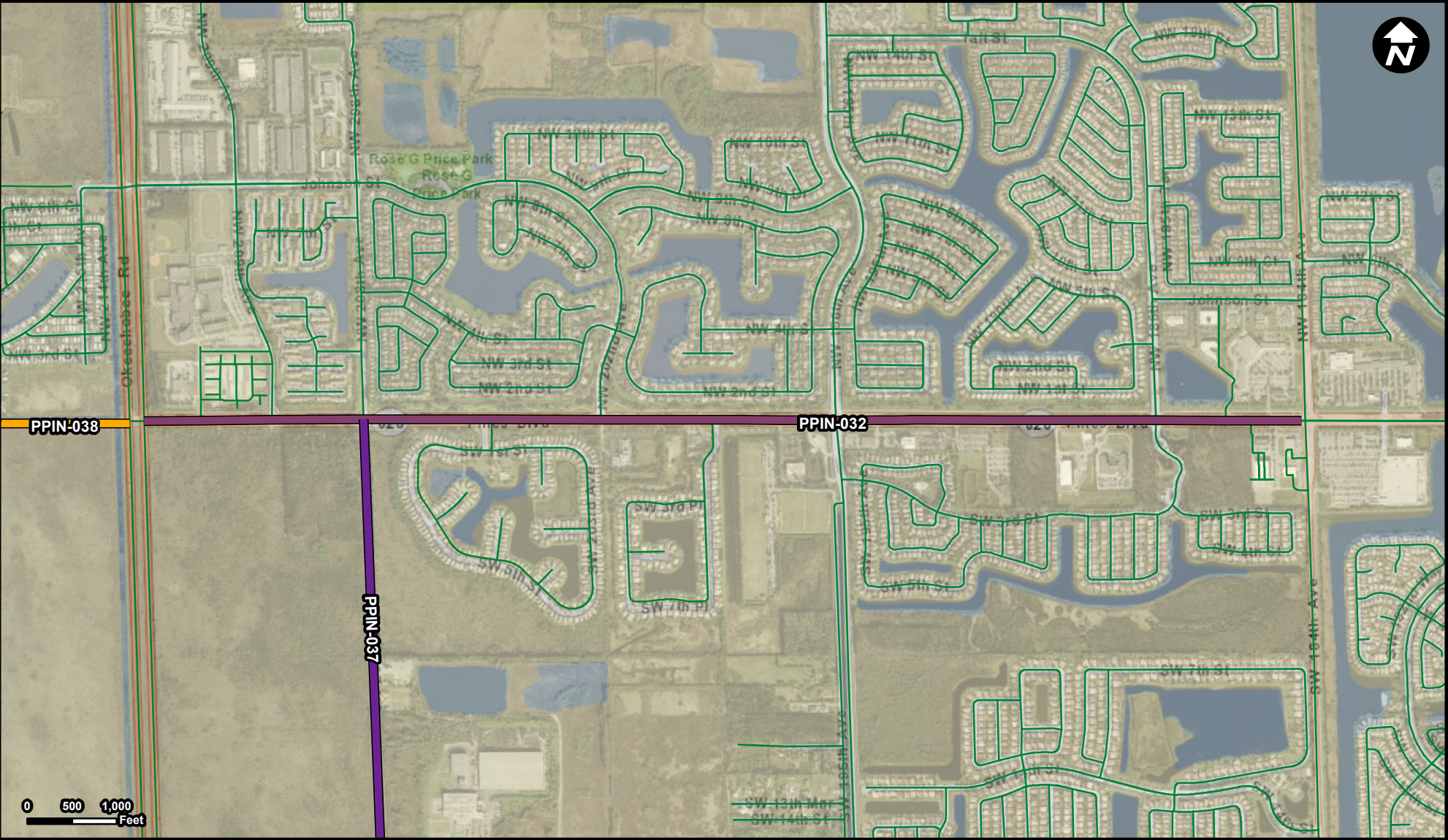
Capacity Increase, Widening
New Road Construction
Add Lanes

Project Description & Project Scope

FROM: SW 160th Ave
To: US 27

Pembroke Road Four Lane Roadway From 184th To US 27 (Total Project cost to be split between the City of Pembroke Pines and Miramar).

Increase from 2 to 4 lanes from SW 160th Ave to SW 196th Ave, Add 4 lanes from SW 196th to SW 208th Ave, increase to 4 lanes from SW 208th to US 27, Extend Miramar Pky from current end to Pembroke Rd. Project being completed in conjunction with the City



Legend

- PPIN-032
- PPIN-037
- PPIN-038
- Municipality
- Unincorporated

Suggested Work Mix:
Primary Work Mix:
Secondary Work Mix:

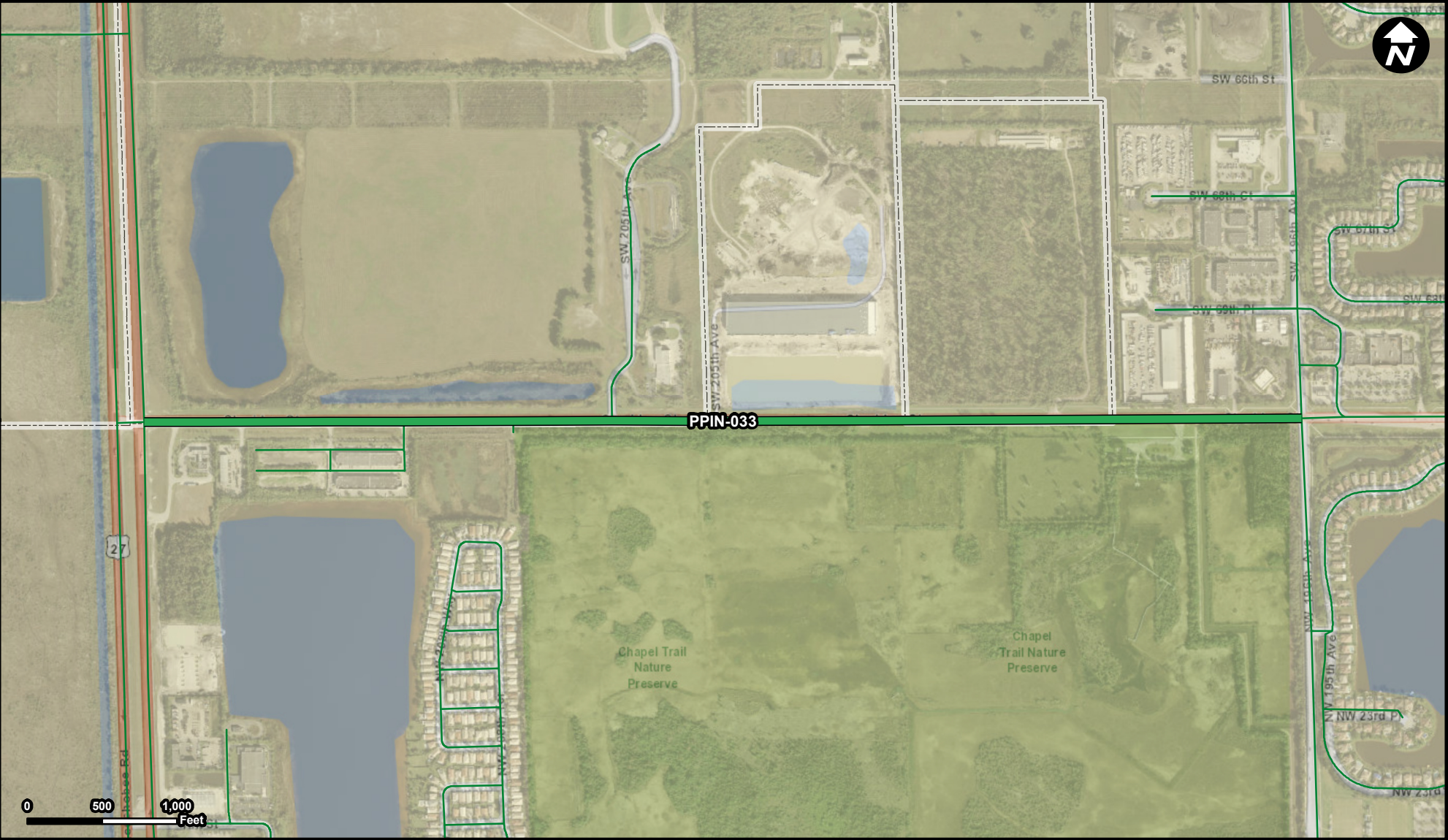
Capacity Increase, Widening
Add Lanes

Project Description &
Project Scope

Widening Pines Blvd From 184th Ave To US 27 (From four lanes to six lanes).

Increase from 4 lanes to 6 lanes, 1 in each direction

FROM: East of SW 184th Ave
To: US 27



Legend

- PPIN-033
- Municipality
- Unincorporated

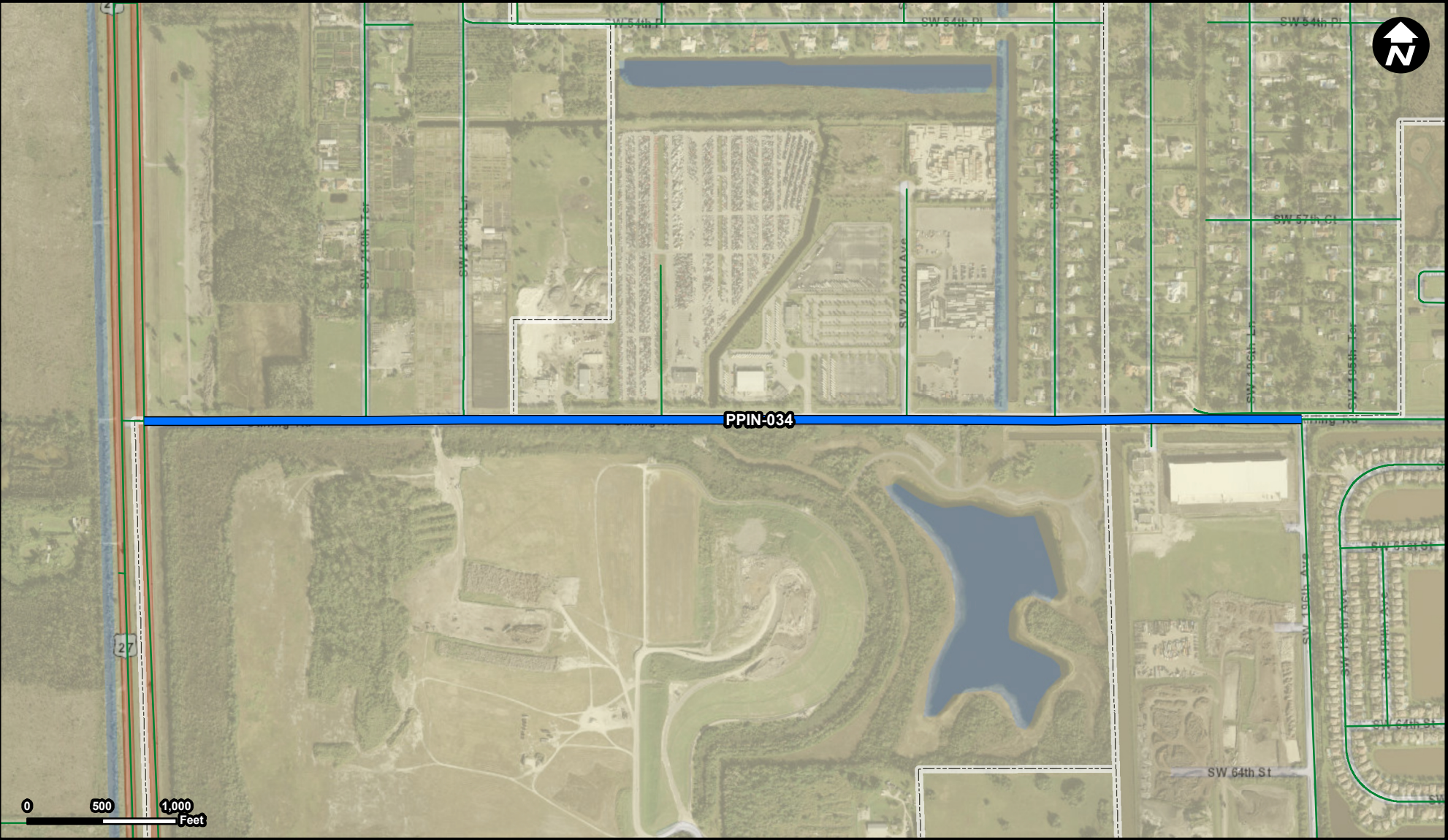
Suggested Work Mix: Capacity Increase, Widening
Primary Work Mix: Add Lanes
Secondary Work Mix: Bike Lane Sidewalk

Project Description & Project Scope

FROM: NW 196th Ave
To: US 27

Widening Sheridan 196th to US 27 (From two lanes to four lanes includes sidewalk on one side).

Widen from 2 lanes to 4 lanes and add sidewalk and bike lanes



Legend

- PPIN-034
- Municipality
- Unincorporated

Suggested Work Mix:

Primary Work Mix:

Secondary Work Mix:

Project Description & Project Scope

Capacity Increase, Widening

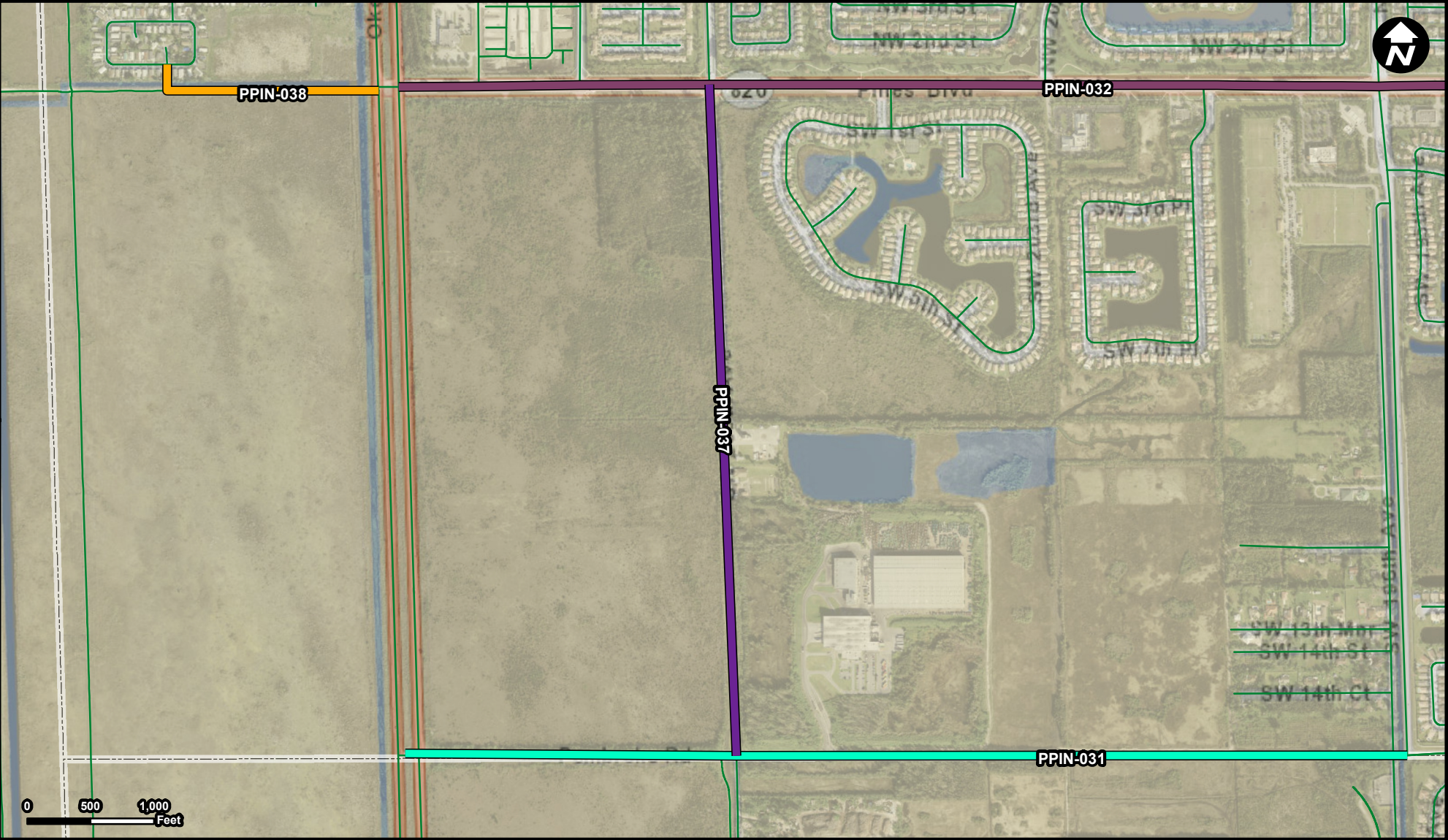
Add Lanes

Bike Lane Sidewalk

Widening Stirling Rd. 196th to US 27 (From two lanes to four lanes sidewalk on one side).

Widen from 2 to 4 lanes and add sidewalk and bike lanes

FROM: NW 196 Ave
To: US 27



Legend

- PPIN-031
- PPIN-032
- PPIN-037
- PPIN-038
- Municipality
- Unincorporated

Suggested Work Mix:
Primary Work Mix:
Secondary Work Mix:

Capacity Increase, Widening
New Road Construction
Bike Lane Sidewalk

Project Description & Project Scope

FROM: Pines Boulevard
To: Pembroke Road
Construction Of 208th Ave from Pines Blvd To Pembroke Road (Two Lane Road)
Construct 2 lane roadway from Pines Boulevard to Pembroke Road.



Legend

- PPIN-032
- PPIN-038
- Municipality
- Unincorporated

Suggested Work Mix:
Primary Work Mix:
Secondary Work Mix:

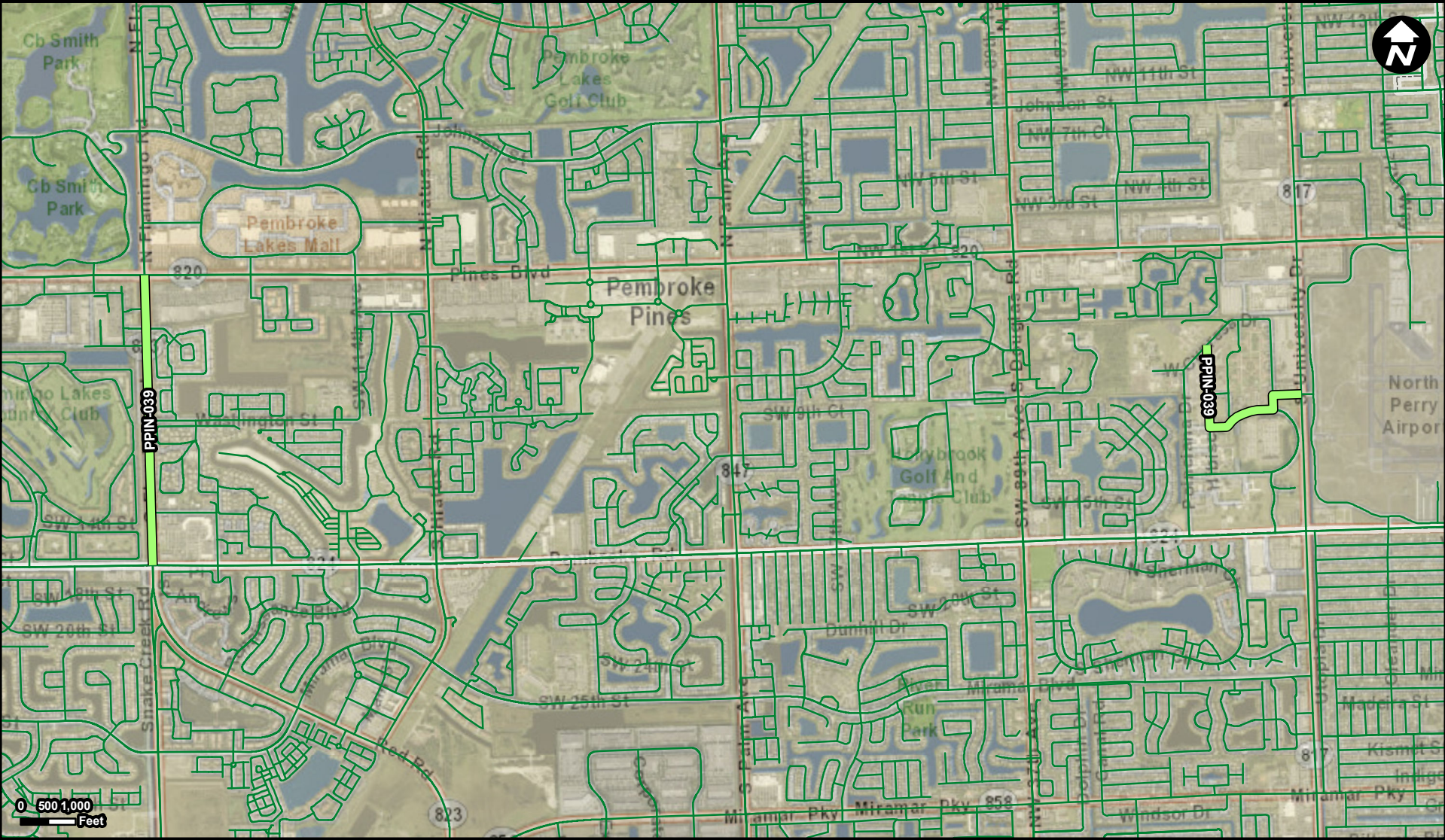
Project Description & Project Scope

Capacity Increase, Widening
New Road Construction
Bike Lane Sidewalk

Two Lane Pines Blvd West of US 27 To Create Another Ingress - Egress For Holly Lake

Add southern entrance to Holly Lake portion of the City

FROM: US 27
To: Holly Lake West of US 27



Legend

- PPIN-039
- Municipality
- Unincorporated

Suggested Work Mix: Bicycle Pedestrian Infrastructure

Primary Work Mix: Sidewalk

Secondary Work Mix:

Project Description & Project Scope City Wide Sidewalk Projects (Health Park Sidewalks [3900 Linear Feet] / Flamingo Rd Sidewalk - Pembroke Rd to Pines Blvd. [4300 Linear Feet] / Pines Village Sidewalks on both sides where sidewalks are missing [79,825 Linear feet])

Provide sidewalk where there currently is none.

FROM: multiple locations

To: