




## Legend

-  NLAU-007
-  Municipality
-  Unincorporated

### Suggested Work Mix:

**Primary Work Mix:**

**Secondary Work Mix:**

### **Project Description & Project Scope**

**Traffic Circles, Speed Tables, Intersection Improvements**

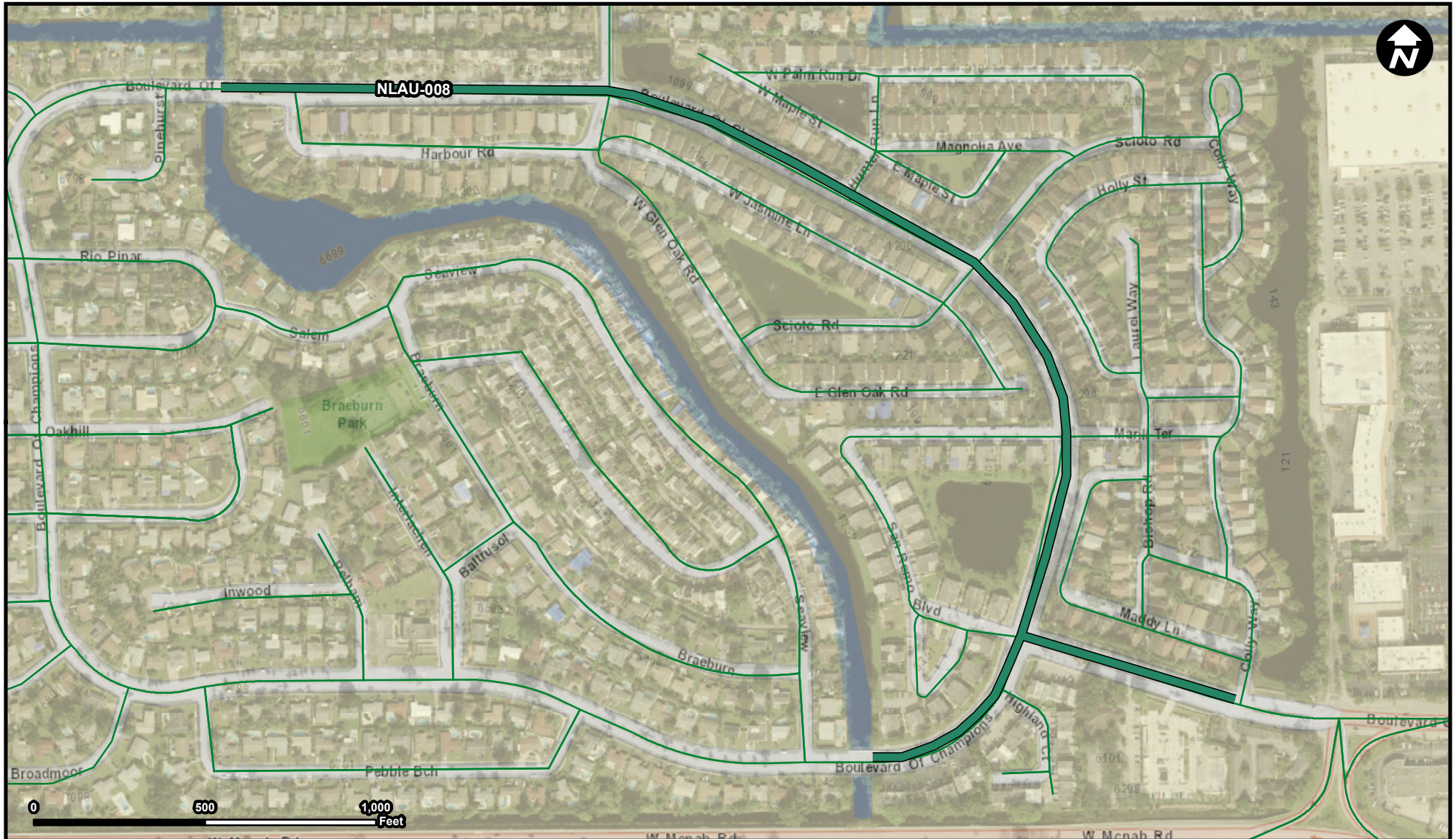
**Safety Project**

**Signing/Pavement**

Evaluation and construction of neighborhood traffic calming devices such as traffic circles, speed humps, and pedestrian crosswalks.

includes improvements to three roadways; installation of traffic circles on SW 81st Ave and Kimberly Boulevard, lane reduction on Kimberly Boulevard, installation speed humps, bike lanes, and median enhancements on Tam Shanter Boulevard.

**FROM:**  
**To:**



## Legend

- NLAU-008
- Municipality
- Unincorporated

**Suggested Work Mix:**  
**Primary Work Mix:**  
**Secondary Work Mix:**

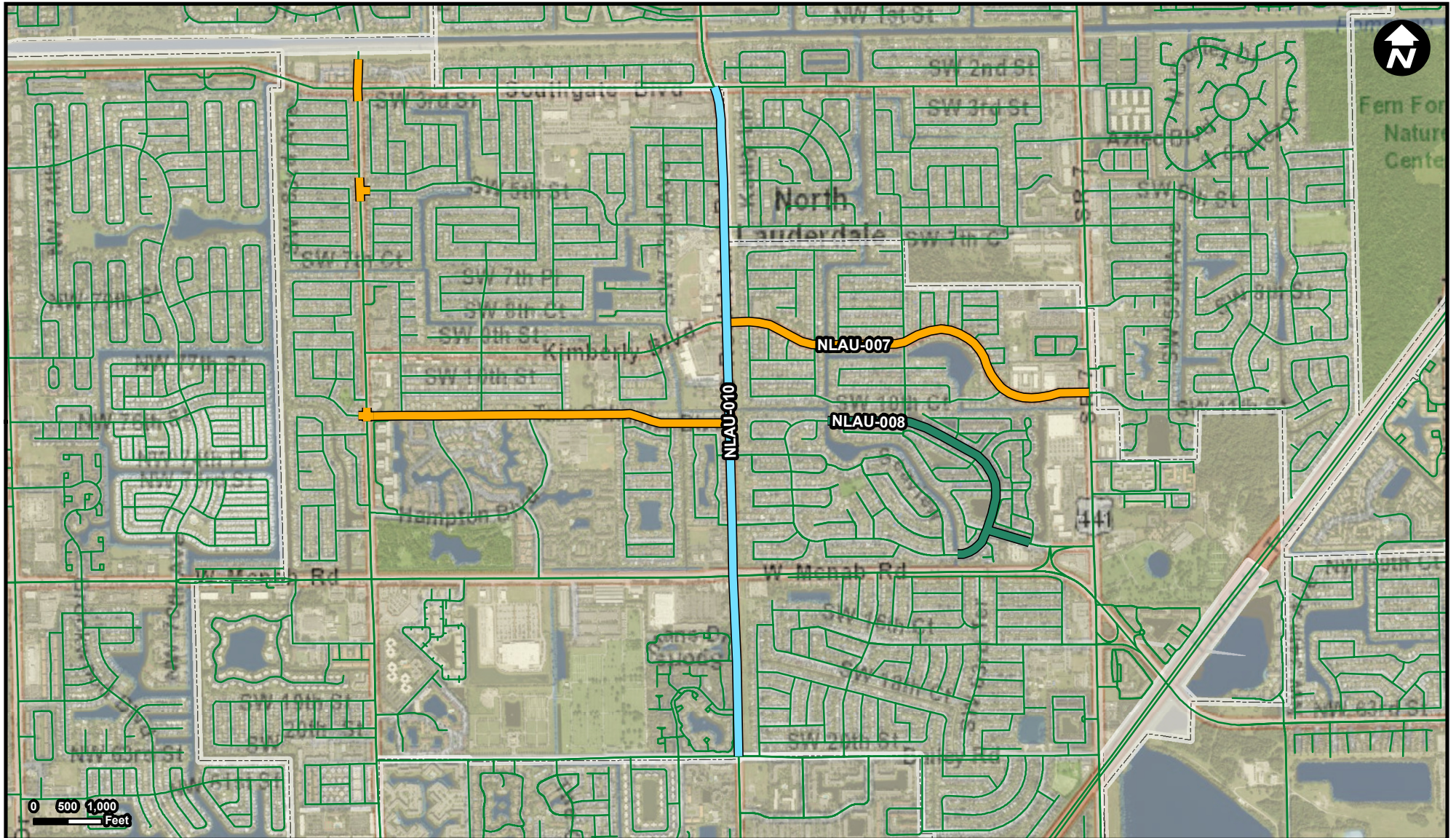
**Bicycle Pedestrian Infrastructure**  
**Safety Project**  
**Signage/Pavement**

**FROM:** Glen Oak Road  
**To:** Sw 64th Terrace

### Project Description & Project Scope

Addition of the standard City sound walls along two highly travelled roadways in the City.

Install 6 foot sound wall, replace sidewalks, install safety barrier wall, increase lighting, provide for tree removal and mitigation. Add Raised intersection with crosswalk, pedestrian signal at BOC and BOC to improve traffic circulation and pedestrian



### Legend

- NLAU-007
- NLAU-008
- NLAU-010
- Municipality
- Unincorporated

**Suggested Work Mix:**  
**Primary Work Mix:**  
**Secondary Work Mix:**

**Landscaping, Hardscape, Signage**  
**Lighting**  
**Safety Project**

**FROM:** Rock Island Road from Bailey Road  
**To:** Rock Island to Southgate

**Project Description & Project Scope**

Addition of the standard City sound walls along two highly travelled roadways in the City.

Install 40 lights on East side of Kimberly from Bailey to Southgate. Improve crosswalks at Kimberly and Forest