

Legend

- LLAK-002
- LLAK-003
- Municipality
- Unincorporated

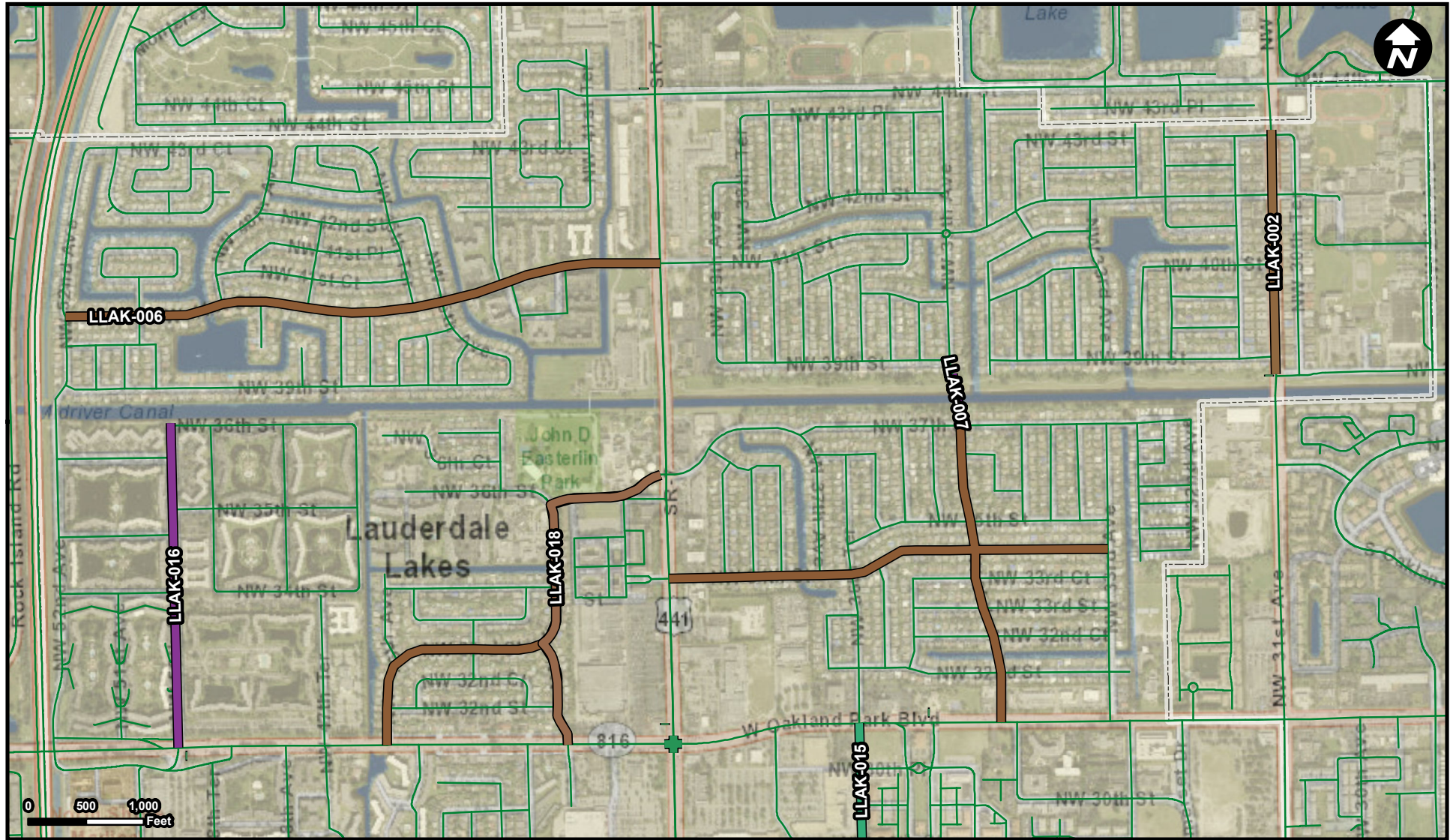
Suggested Work Mix: Bicycle Pedestrian Infrastructure
Primary Work Mix: Safety Project
Secondary Work Mix: Sidewalk

FROM: NW 39 Street to the south
To: North of NW 43 Street, i.e. City's limit to the north

Project Description & Project Scope

Sidewalk, bike lanes, pedestrian cross walks, decorative landscaping, road & drainage

Sound barrier wall to the east and safety improvement on the west side of the Road. Drainage and pavement for the connected NW 30 Terrace .



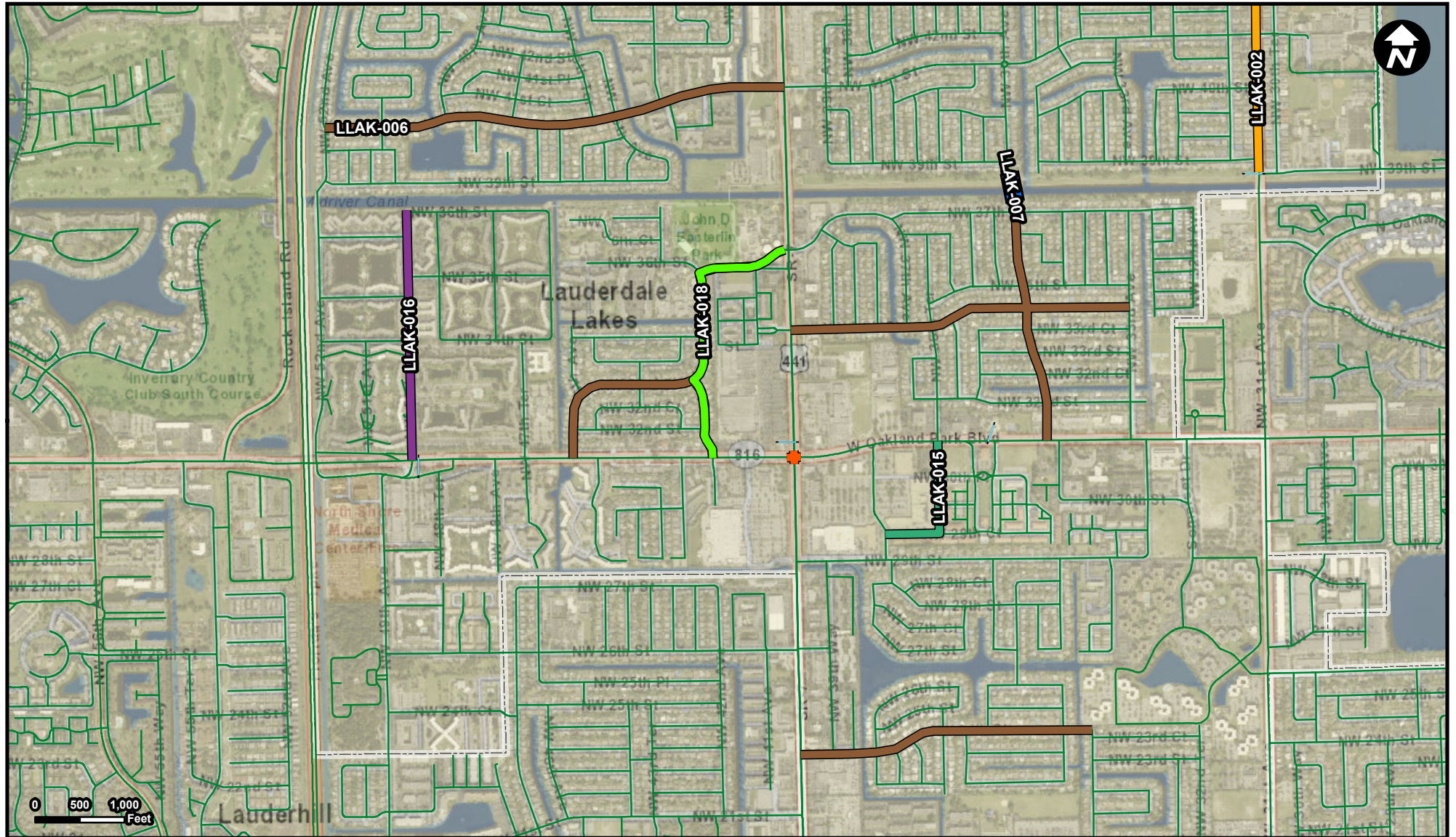
- Legend**
- LLAK-002
 - LLAK-017
 - LLAK-003
 - LLAK-018
 - LLAK-006
 - Municipality
 - LLAK-007
 - Unincorporated
 - LLAK-015
 - LLAK-016

Suggested Work Mix: Landscaping, Hardscape, Signage
Primary Work Mix: ITS
Secondary Work Mix: Landscaping

FROM:
To:

Project Description & Project Scope Artistic Gateway System

The scope will include Gateway Signage with Digital Display Electronic System. It will have ornamental wall structures in compliance with the City's outlook.



Legend

- LLAk-002
- LLAk-003
- LLAk-006
- LLAk-007
- LLAk-015
- LLAk-016
- LLAk-017
- LLAk-018
- Municipality
- Unincorporated

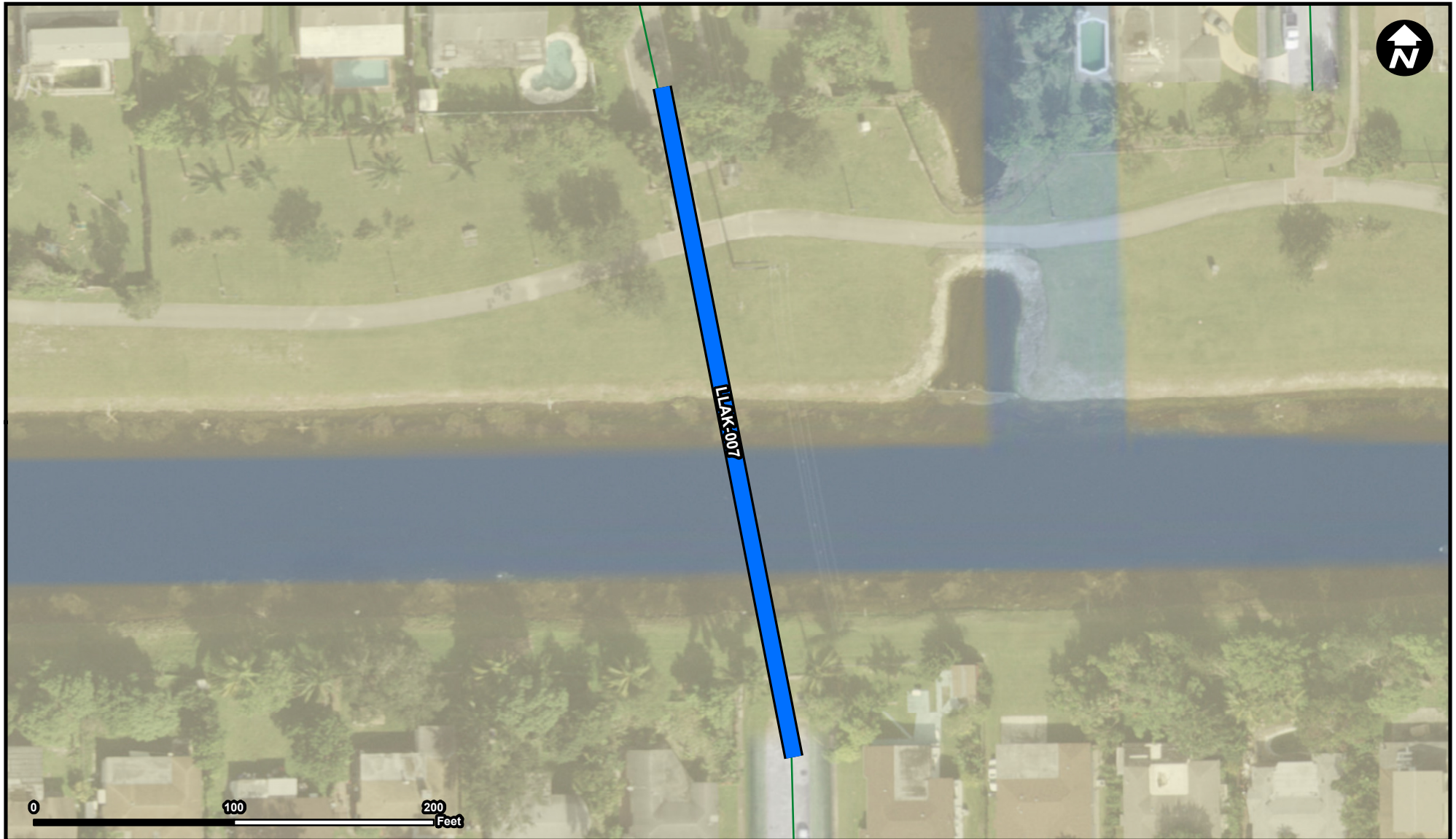
FROM:
To:

Suggested Work Mix: Traffic Circles, Speed Tables, Intersection Improvements
Primary Work Mix: Safety Project
Secondary Work Mix: Safety Project




Project Description & Project Scope

Installation of traffic calming devices (i.e. speed humps, warning signs, pavement markings, etc.) citywide.

Most residential streets within the City has a speed limit of 30 MPH. The project main goal is to reduce speeding and cut through on residential streets and improve the quality of live of the residents by using traffic calming strategies such as raised i



Legend

-  LLAk-007
-  Municipality
-  Unincorporated

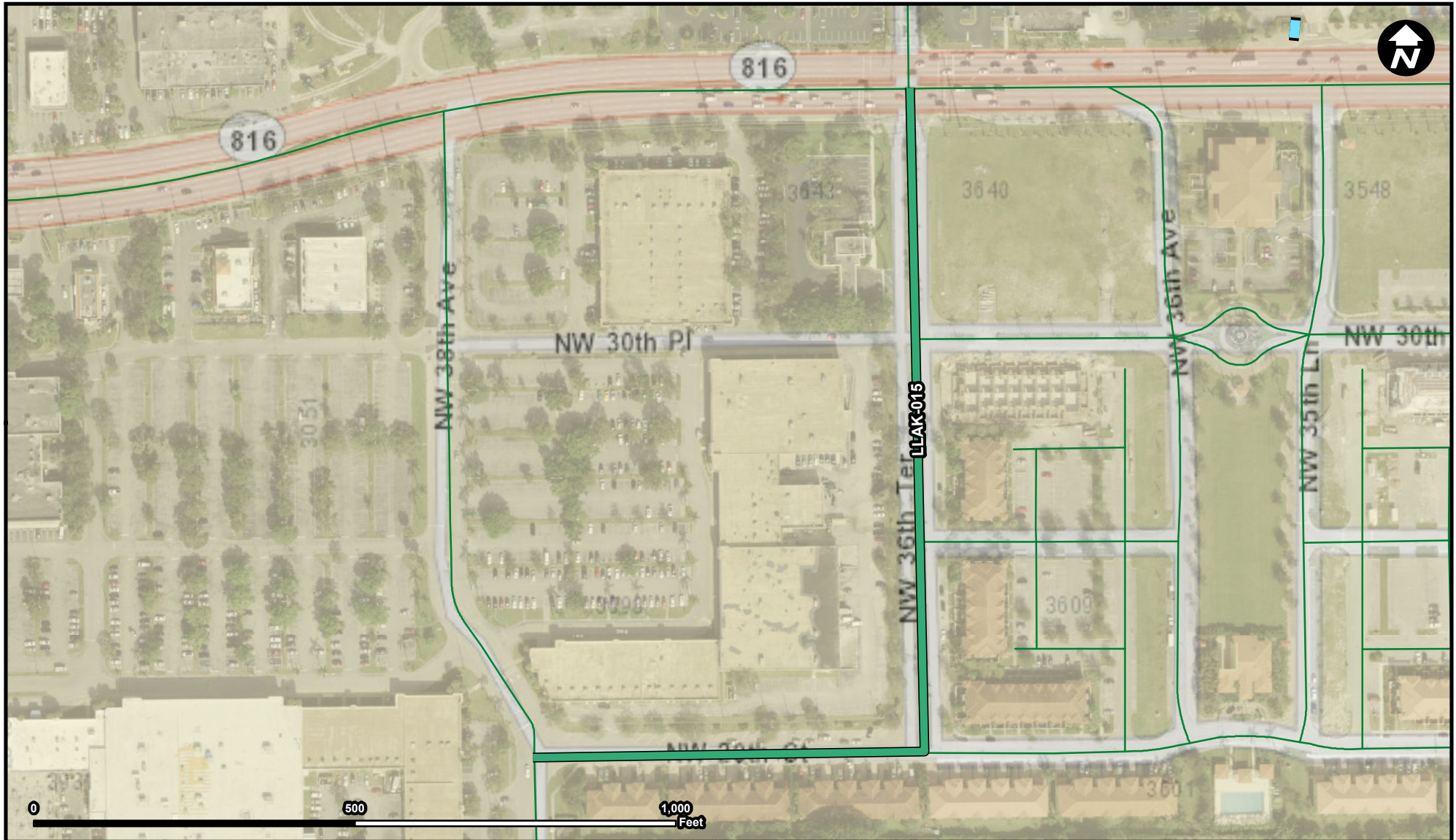
FROM: NW 35 Avenue on the south side of SFWMD C-13 Canal
To: NW 35 Avenue on the north side of SFWMD C-13 Canal

Suggested Work Mix: Bridge
Primary Work Mix: Safety Project
Secondary Work Mix: Safety Project

Project Description & Project Scope

Construction of a new pedestrian bridge over C-13 Canal

About 250 linear feet pedestrian steel bridge connecting pedestrian walkway on both sides of SFWMD C-13 canal along NW 35 Avenue in the City of Lauderdale Lakes, Florida.



Legend

- LLAk-003
- LLAk-015
- Municipality
- Unincorporated

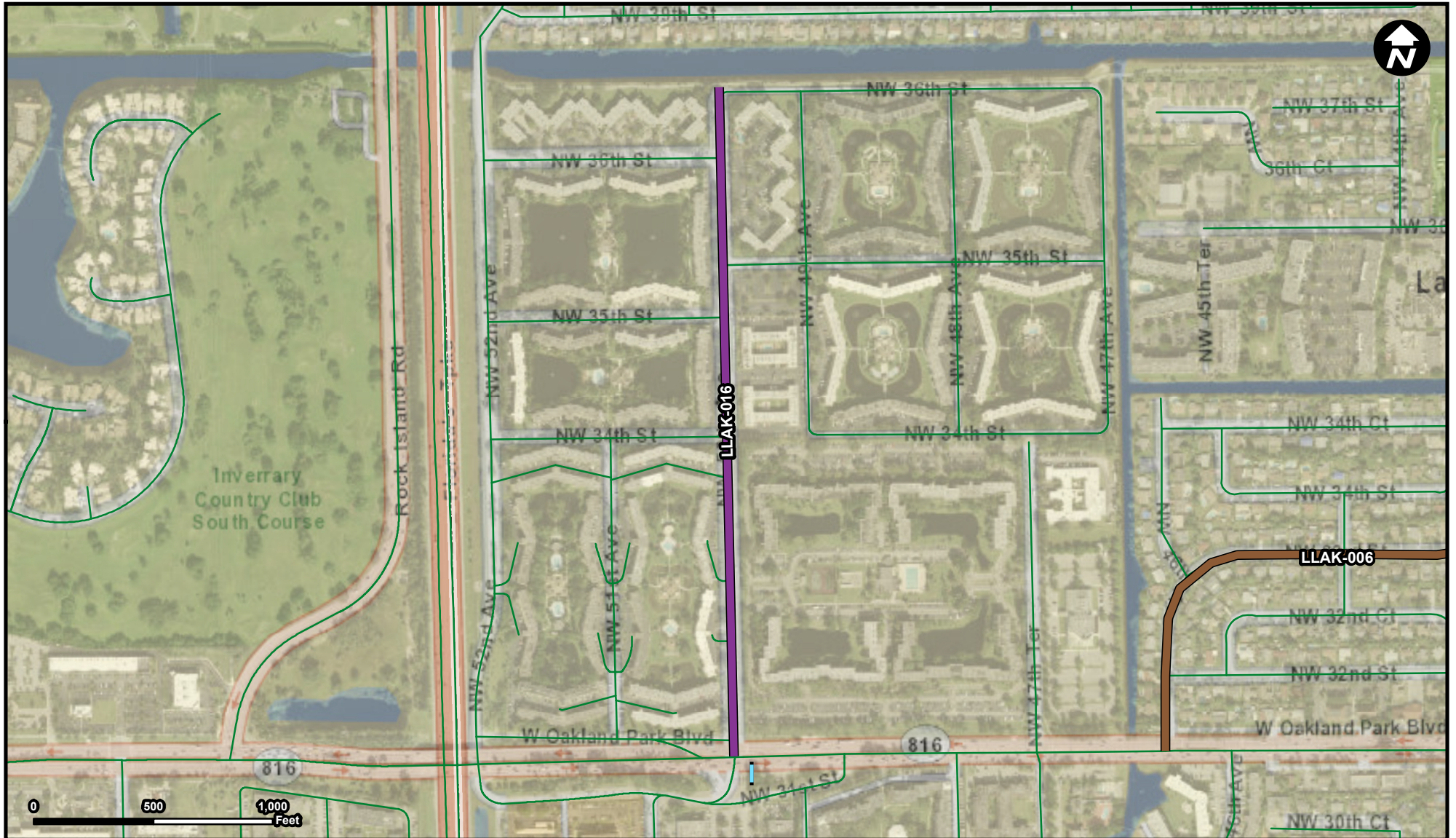
FROM: Oakland Park Blvd
To: NW 38th Avenue

Suggested Work Mix: Bicycle Pedestrian Infrastructure
Primary Work Mix: Landscaping
Secondary Work Mix: Safety Project

Project Description & Project Scope

Beautification, median improvements, traffic calming, bike lane, drainage improvements

Project consists in the beautification of NW 36th Terrace from Oakland Park Blvd to NW 28th Avenue. Improvements includes: median and curb improvements, lane reduction, traffic control devices installation, landscaping and drainage.



Legend

- LLAk-003
- LLAk-006
- LLAk-016
- Municipality
- Unincorporated

FROM: C-13 Canal
TO: Oakland Park Blvd

Suggested Work Mix:
Primary Work Mix:
Secondary Work Mix:

Bicycle Pedestrian Infrastructure
Safety Project
Landscaping


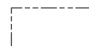

Beautification, traffic calming, drainage improvements

Project Description & Project Scope

NW 50th Avenue is approximately 0.52 mile from the C-13 canal to Oakland Park Blvd. This project consists in the installation of landscaping, median improvement, lane reduction, bike lane, traffic calming devices installation and drainage improvements



Legend

-  LLAk-017
-  Municipality
-  Unincorporated

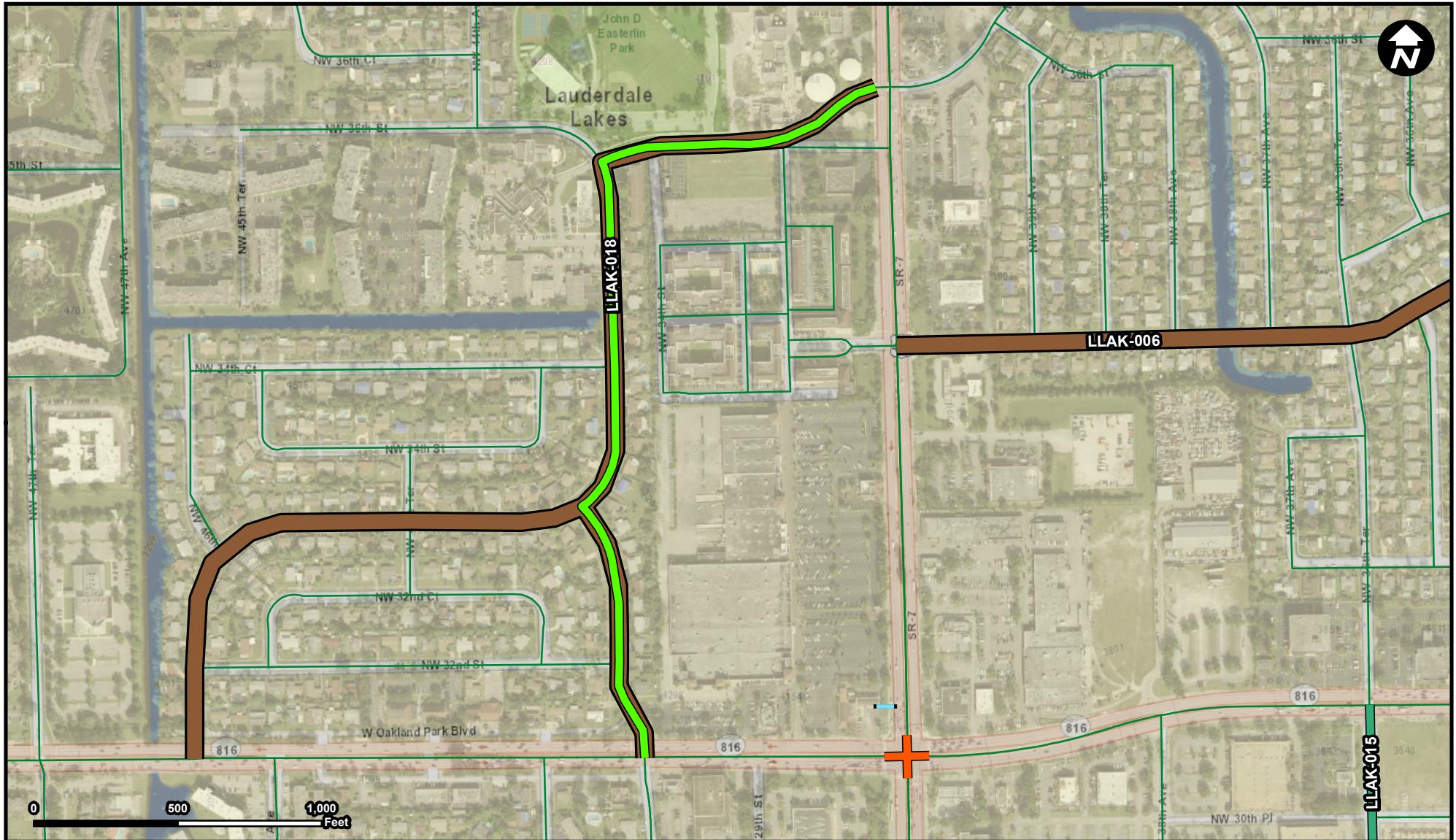
FROM:
To:

Suggested Work Mix: Bicycle Pedestrian Infrastructure
Primary Work Mix: Safety Project
Secondary Work Mix: Intersection

Project Description & Project Scope

Safety assesment to improve pedestrian safety along State road 7 and Oakland Park Blvd corridors

The scope includes feasibility study to formulate



Legend

- LLAk-003
- LLAk-006
- LLAk-015
- LLAk-017
- LLAk-018
- Municipality
- Unincorporated

FROM: State Road 7 to NW 43rd Avenue
To: NW 43rd Avenue to Oakland Park Blvd

Suggested Work Mix: Landscaping, Hardscape, Signage
Primary Work Mix: Landscaping
Secondary Work Mix: Safety Project

Project Description & Project Scope
Beautification, Landscape improvements, traffic calming, drainage improvements

The project scope consist in the construction of a defined entranceway to the City Hall complex on NW 36th street from State Road 7 to NW 43rd Avenue and from NW 43rd Avenue to Oakland Park Blvd. Project includes streetscape, landscape improvements, way f