

**Legend**

- DEER-003
- DEER-009
- DEER-004
- Municipality
- Unincorporated
- DEER-005
- DEER-006
- DEER-007
- DEER-008

**Suggested Work Mix:** Lighting  
**Primary Work Mix:** Lighting  
**Secondary Work Mix:** Safety Project

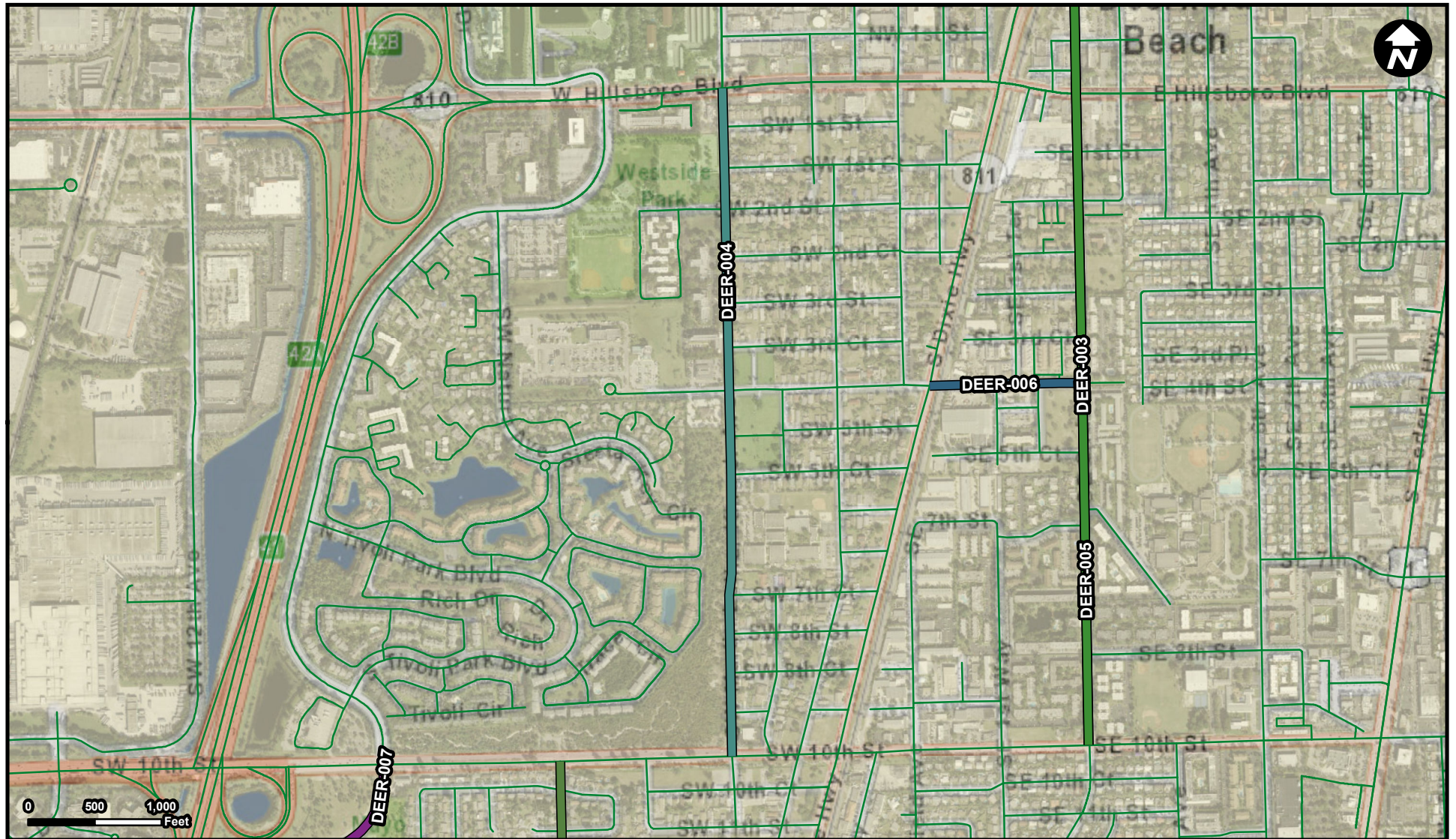
**Project Description & Project Scope**

Pedestrian lighting along streets to increase safety and promote a pedestrian friendly environment through our communities.

The City is seeking funds to install additional roadway lighting throughout city neighborhoods on city owned rights of way with decorative, LED options.

**FROM:**  
**To:**





### Legend

- DEER-003
- DEER-004
- DEER-005
- DEER-006
- DEER-007
- Municipality
- Unincorporated

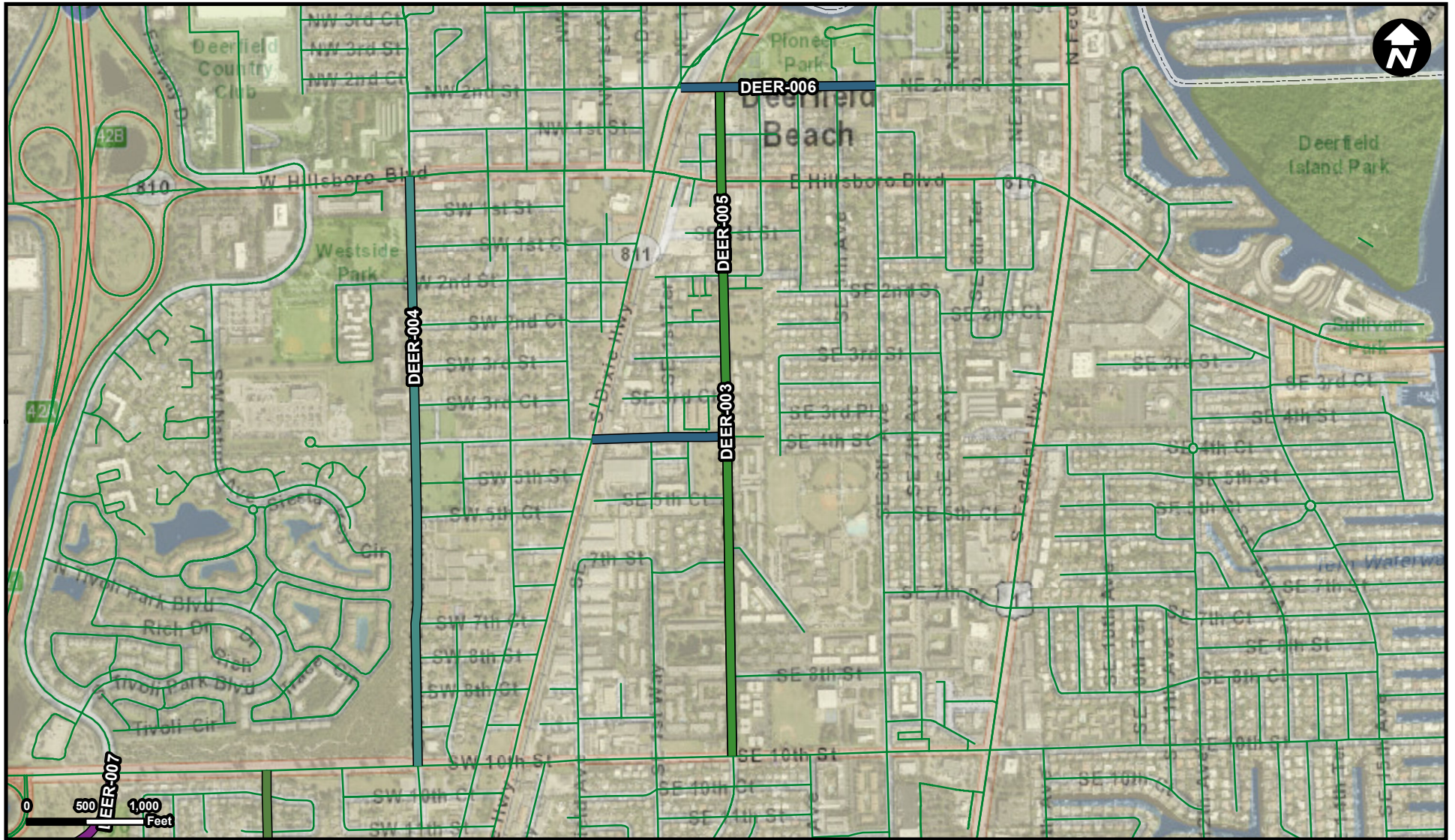
**Suggested Work Mix:** Bicycle Pedestrian Infrastructure  
**Primary Work Mix:** Bike Lane Sidewalk  
**Secondary Work Mix:** Lighting

**FROM:** W Hillsboro Boulevard  
**To:** SE 10 Street

**Project Description & Project Scope** Roadway improvements to include lane reduction, bike lanes, pedestrian lighting, and landscaping.

This project is being completed under the NE Mobility Project LAP and funds will be requested to redirect to the SW 11 Way project (DEER-007)





### Legend

- DEER-003
- DEER-004
- DEER-005
- DEER-006
- DEER-007
- Municipality
- Unincorporated

**Suggested Work Mix:** Bicycle Pedestrian Infrastructure  
**Primary Work Mix:** Sidewalk  
**Secondary Work Mix:** Lighting

**FROM:** NE Eller Street  
**To:** SE 10th Street

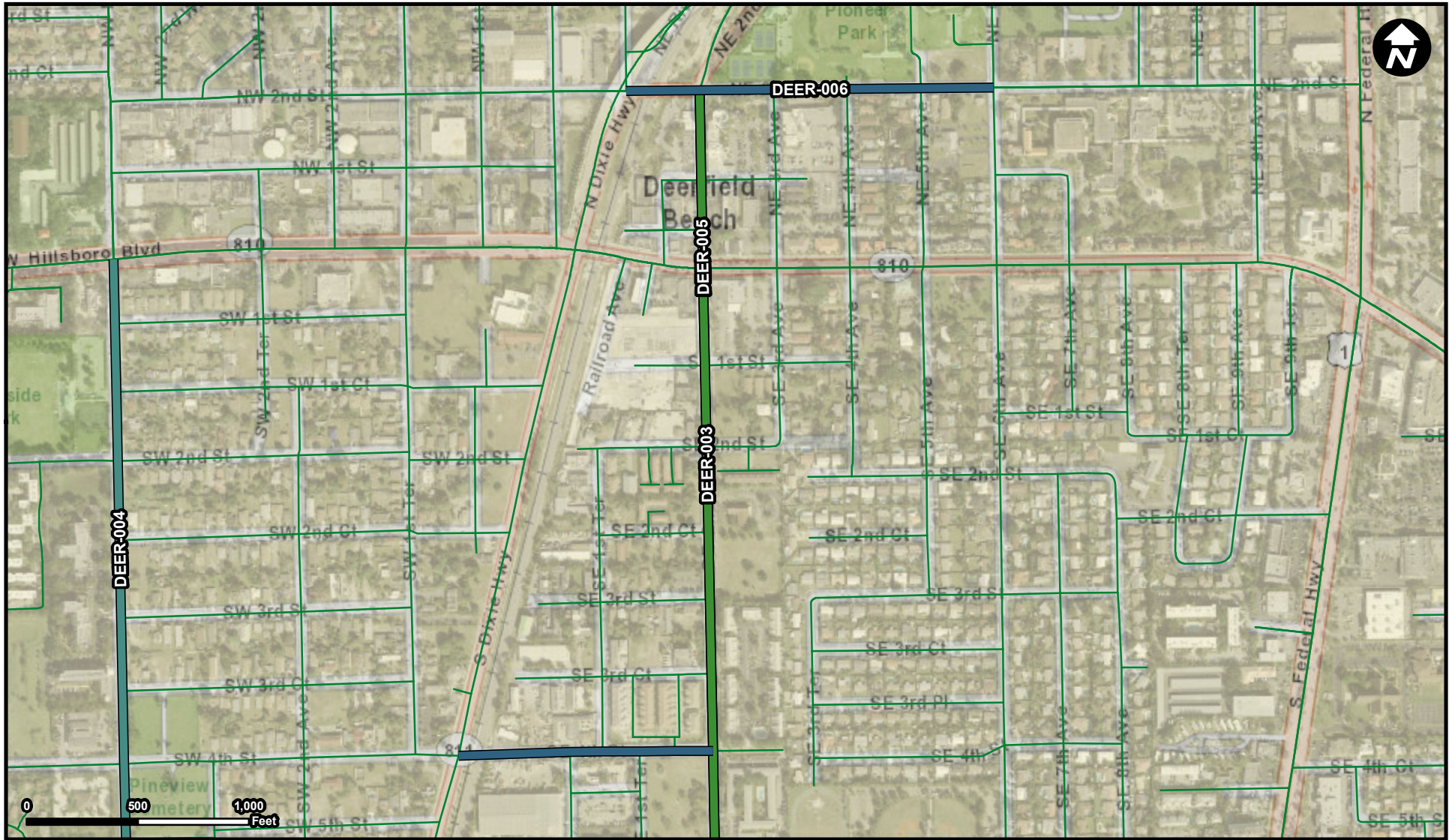
### Project Description & Project Scope

Transportation improvements for downtown development to include pedestrian lighting & burying FPL lines on SE/NE 2nd Ave. and SE/NE 2nd St.

The scope of this project is a streetscape project to build accessible sidewalk, improved pedestrian lighting, innovative intersection design, and high visibility crosswalks and markings to improve safety and encourage multi-modal traffic.



# DEER-006



## Legend

- DEER-003
- DEER-004
- DEER-005
- DEER-006
- Municipality
- Unincorporated

Source: Broward Municipal Surtax Projects - BMPO; ESRI Basemap

**Suggested Work Mix:** Bicycle Pedestrian Infrastructure  
**Primary Work Mix:** Sidewalk  
**Secondary Work Mix:** Lighting

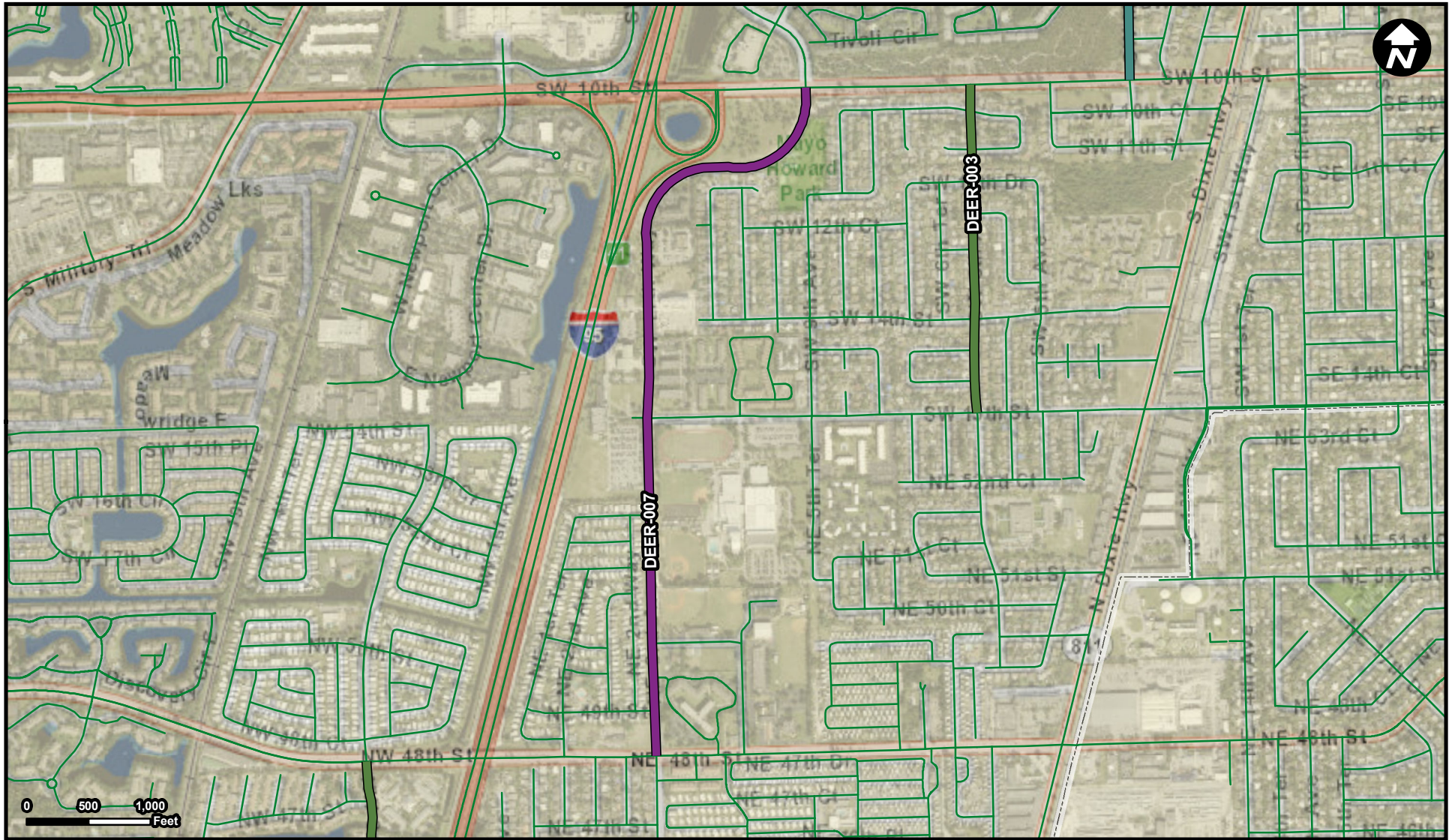
### Project Description & Project Scope

Infrastructure improvements to include bicycle facilities, sidewalks & landscaping to enhance street network.

The Pioneer Grove Local Activity Center is the redevelopment of SE 2nd Avenue from Eller Street to SE 10th Street to include SE 4th Street from Dixie to SE 2nd Avenue and Eller Street from the railroad to NE 6th Avenue. The goal of this corridor is t

**FROM:** Eller Street at SE 2nd Avenue  
**To:** SE 10th Street





## Legend

- DEER-003
- DEER-004
- DEER-007
- Municipality
- Unincorporated

**Suggested Work Mix:** Capacity Increase, Widening  
**Primary Work Mix:** Add Lanes  
**Secondary Work Mix:** Bike Lane Sidewalk

**FROM:** SW 10 Street  
**To:** NE 48 St

### Project Description & Project Scope

Reconstruction of FAU Research Blvd. from SW 10th Street to NE 48th Street. The project entails increasing the number of lanes from 2 to 4, adding landscaped medians, bike lanes, linear walking trail, street lighting and proper roadway drainage.

The proposed project scope includes street widening for emergency evacuation routes, the addition of sidewalks, bicycle, and transit facilities to encourage multi-modalism, innovative intersection design, installation of broadband, underground utilities,





## Legend

- DEER-008
- Municipality
- Unincorporated

**Suggested Work Mix:** Bicycle Pedestrian Infrastructure  
**Primary Work Mix:** Bike Lane Sidewalk  
**Secondary Work Mix:** Lighting

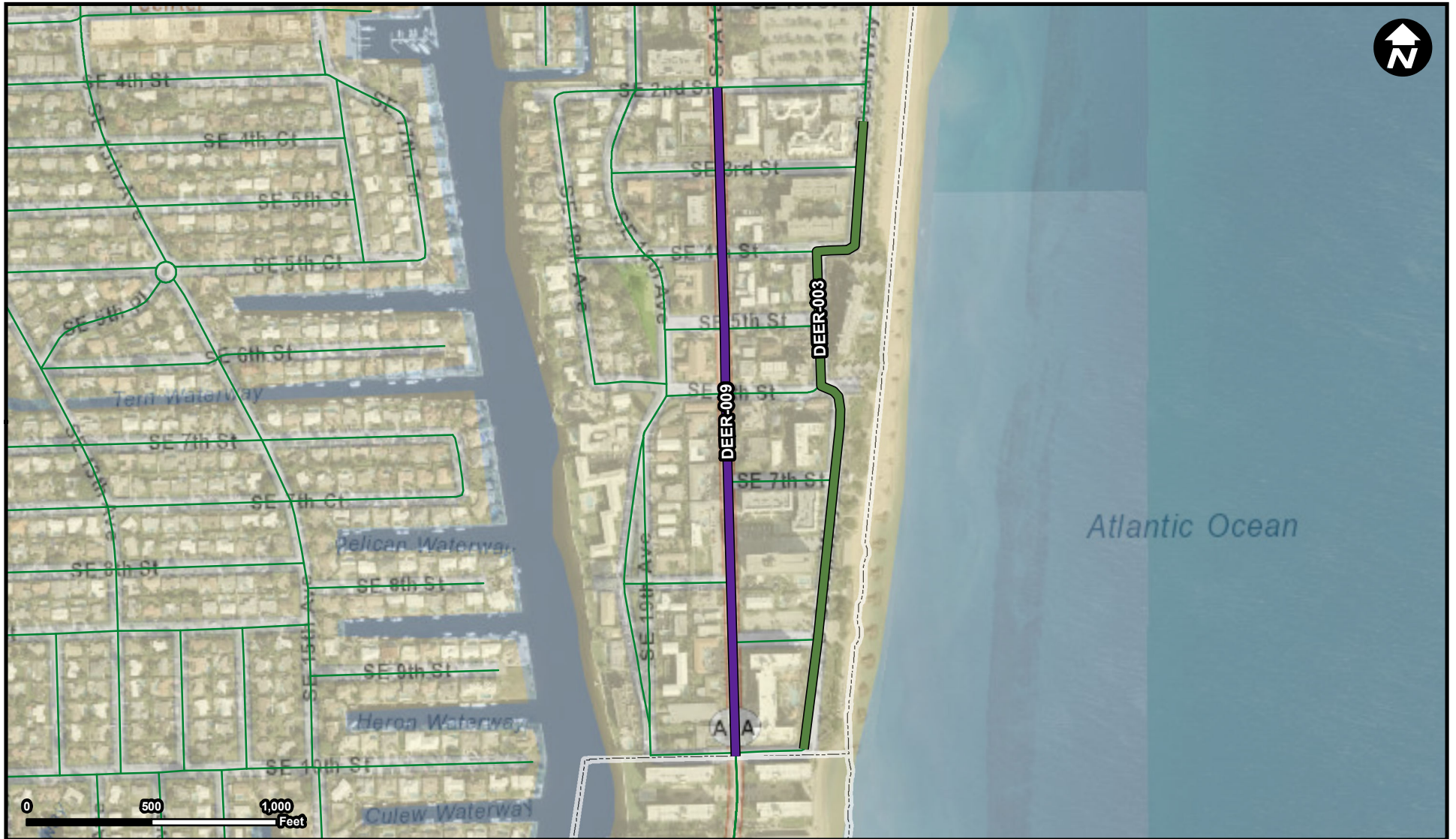
**FROM:** Military Trail at Crystal Lake Drive  
**To:** Military Trail at NW 45 St

## Project Description & Project Scope

Transportation improvements for future residential community to include bike lanes, traffic calming, sidewalks along Military Trl., Crystal Lake Dr. & NW 45th St.

The scope of work for this project consists of pedestrian improvements to include sidewalk and high visibility cross walks, ADA improvements for a continuous pedestrian access route along Crystal Lake Drive with curb ramps and detectable warnings at vehi





### Legend

- DEER-003
- DEER-009
- Municipality
- Unincorporated

**Suggested Work Mix:** Bicycle Pedestrian Infrastructure  
**Primary Work Mix:** Bike Lane Sidewalk  
**Secondary Work Mix:** Safety Project

**FROM:** SE 2nd Street  
**To:** Hillsboro Beach limits

### Project Description & Project Scope

Transportation improvements in the beach area to include bike lanes, sidewalks, landscaping on A1A from SE 2nd St. to City line.

The City is requesting reallocation of these funds to the linear park project on the west side of Powerline Road, south of W Hillsboro Blvd, as well as pedestrian crossing improvement a West Drive.