

Legend

- CORA-097
- CORA-098
- CORA-102
- CORA-115
- Municipality
- Unincorporated

Suggested Work Mix:

Primary Work Mix:

Secondary Work Mix:

Project Description & Project Scope

Bicycle Pedestrian Infrastructure

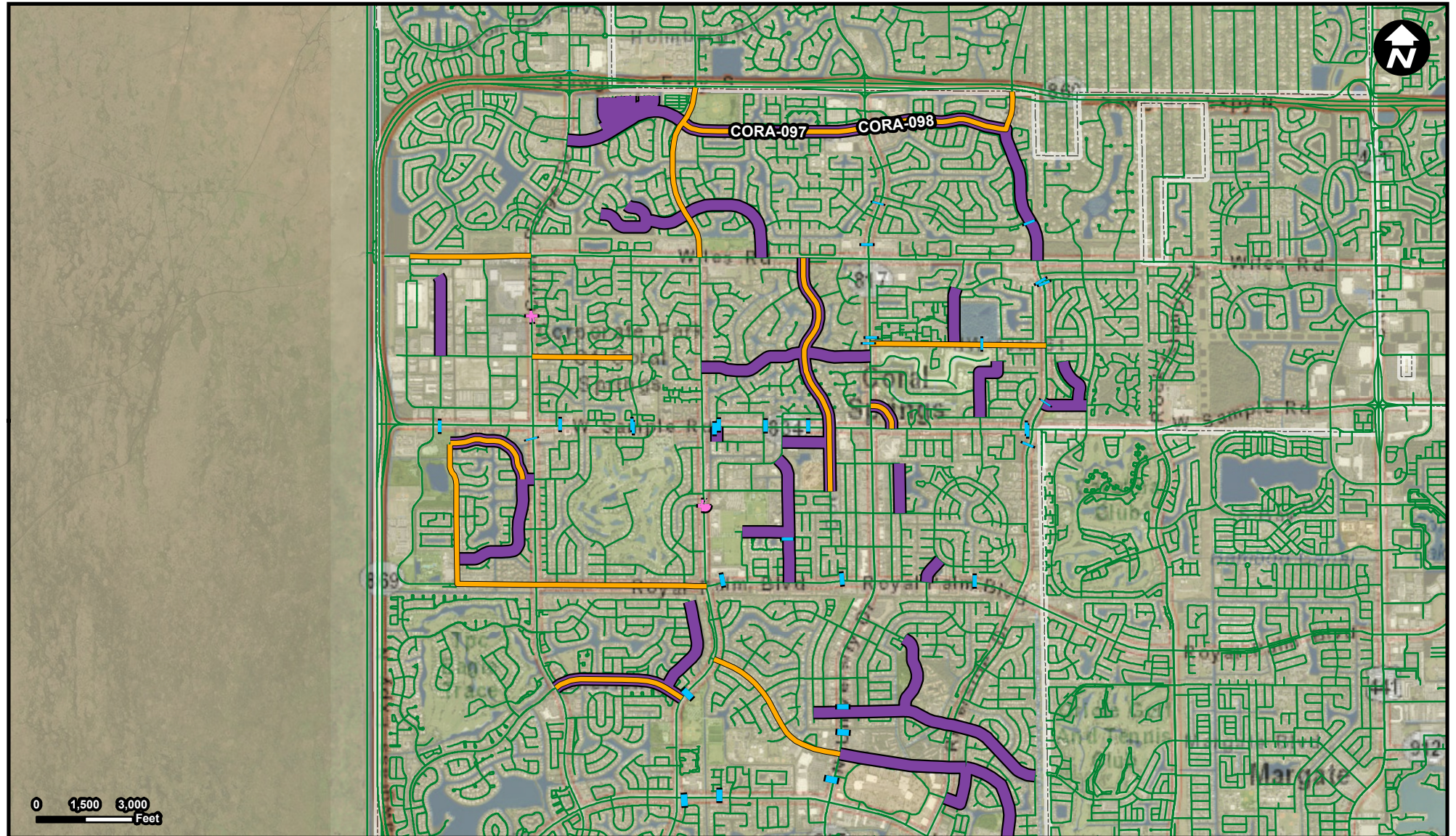
Sidewalk

Bike Lane Sidewalk

Construction of new sidewalks where none exists, and replacement of asphalt paths with ADA compliant concrete sidewalks.

Refer to 5 subarea maps within the City of Coral Springs (attached) that highlight the locations of asphalt sidewalks (red lines) proposed to be replaced with concrete. An attached spreadsheet breaks out the individual sidewalk segments identified with

FROM:
To:



Legend

- CORA-097
- CORA-098
- CORA-102
- CORA-115
- Municipality
- Unincorporated

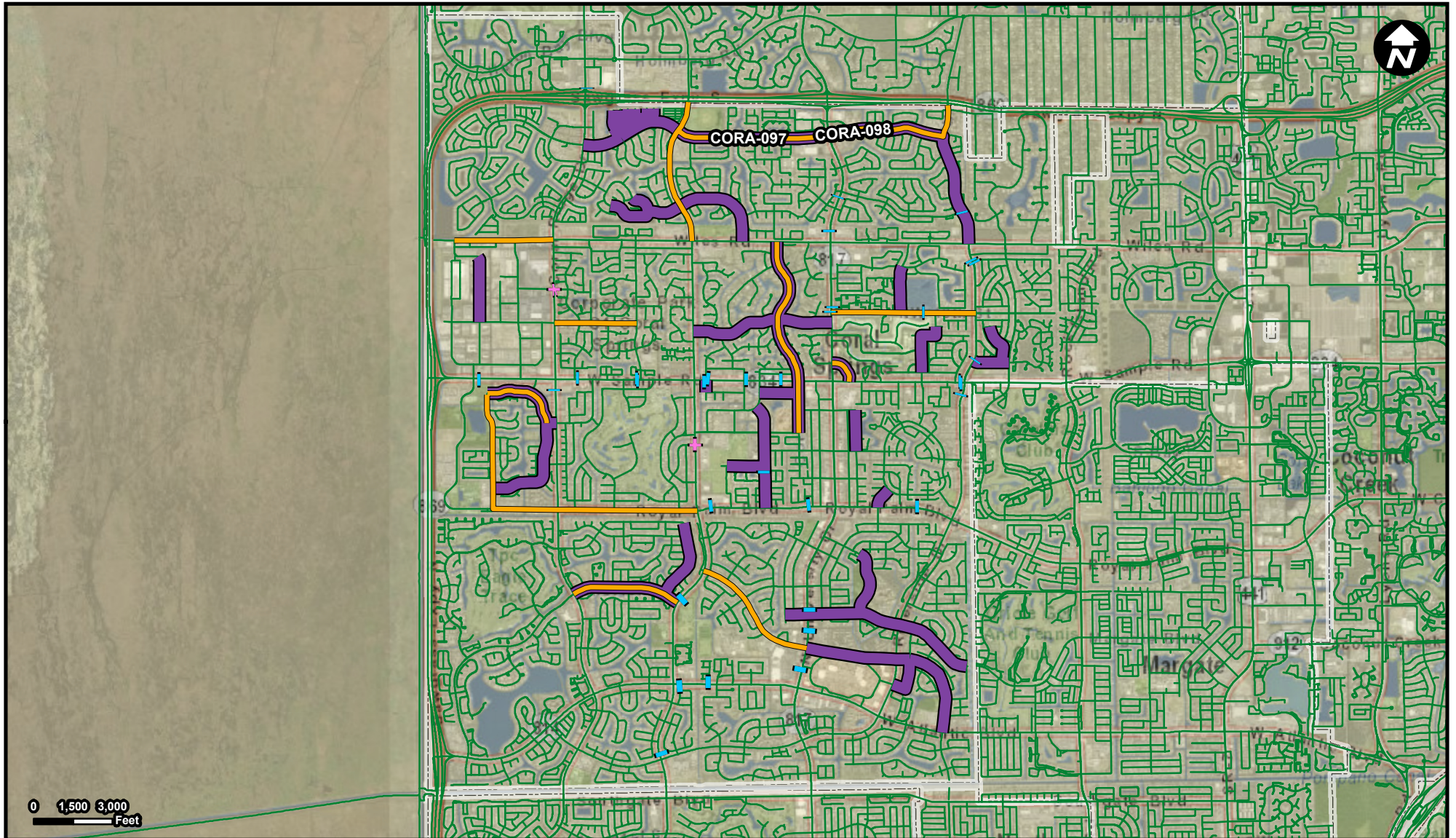
FROM: NW 39 St From Coral Ridge Drive to NW 110 Avenue. Location Map attached.
To: NW 39 St From Coral Ridge Drive to NW 110 Avenue. Location Map attached.

Suggested Work Mix: **Bicycle Pedestrian Infrastructure**
Primary Work Mix: **Bike Lane Sidewalk**
Secondary Work Mix: **Landscaping**

Project Description & Project Scope

Complete construction of new sidewalks where none exists, and replacement of asphalt paths with ADA compliant concrete sidewalks.

The NW 39th Street Project will narrow existing 11 foot travel lanes to 10-feet, add 4-foot bike lanes, add 6-foot sidewalks, replace valley gutter, restore driveways, mill and resurface roadway, pavement markings, new signage, restore irrigation, and a



Legend

- CORA-097
- CORA-098
- CORA-102
- CORA-115
- Municipality
- Unincorporated

Suggested Work Mix:

Primary Work Mix:

Secondary Work Mix:

Project Description & Project Scope

Transit Routing

Transit Improvement

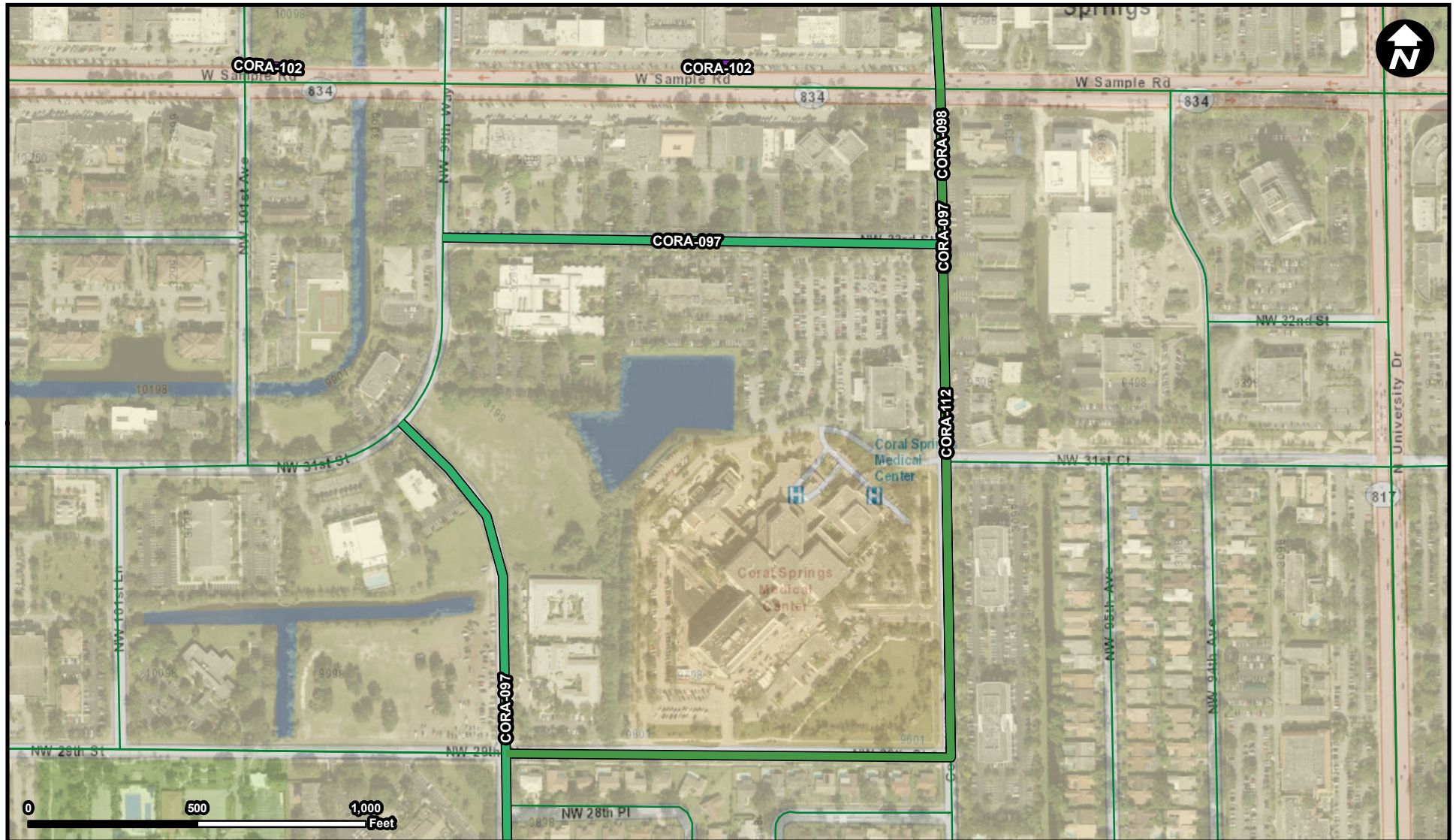
Replace aging bus shelters.

An attached list of bus shelters provides an inventory of City owned and maintained bus shelters sorted by date of installation. Of the 66 bus shelters in the City 35 are greater than 10 years old and 56 shelters are greater than 9 years old. Many of t

FROM:
To:

CORA-112

Project Name
Downtown DRI Improvements



Legend

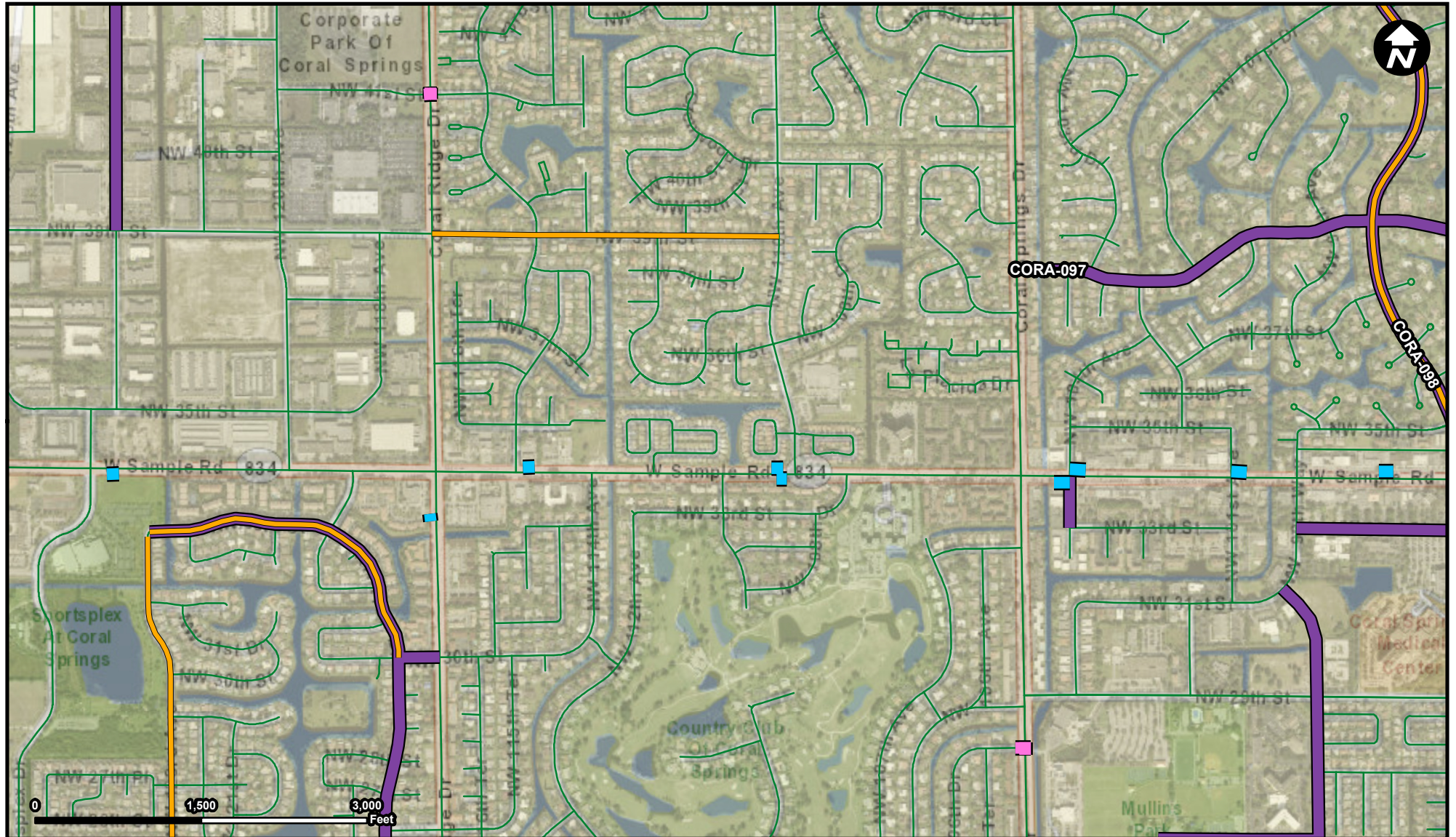
- CORA-097
- CORA-098
- CORA-102
- CORA-112
- Municipality
- Unincorporated

Suggested Work Mix: Bicycle Pedestrian Infrastructure
Primary Work Mix: Add Lanes
Secondary Work Mix: Bike Lane Sidewalk

FROM:
To:

Project Description & Project Scope Ongoing roadway improvements to ease traffic flow due to increased downtown development.

Coral Hills Drive, from Sample Road to NW 29 Street, widen to provide a 3-lane cross section, add bike lanes. add sidewalk on east side between Sample and NW 31 Court.
 NW 29 Street, from Coral Hills Drive to NW 28th St provide a 3-lane cross s



Legend

- CORA-097
- CORA-098
- CORA-102
- CORA-115
- Municipality
- Unincorporated

Suggested Work Mix:
Primary Work Mix:
Secondary Work Mix:

Signal Enhancement
Traffic Signals

FROM:
To:

Project Description & Project Scope

Install emergency traffic signals at Fire Stations 71, 80 and 64.

Construct emergency traffic signals with mast arms at two fire stations in the City of Coral Springs. Fire Station #71 located at 11800 NW 41st Street. Emergency signals are proposed for the intersection of Coral Ridge Drive and NW 41st Street.