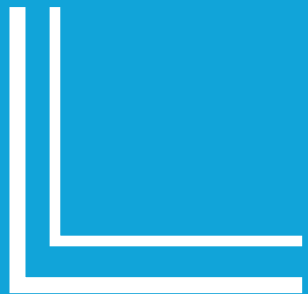




FISCAL YEAR
2020

MUNICIPAL SURTAX
CAPITAL PROJECTS PRIORITIES



Legend:

Project Ranking - #1-110 represent MPO Surtax Services recommendations for fiscal year 2020 and consider construction readiness and utilized “rounds” to ensure equity among municipalities. Project #111-510 have not been evaluated for funding readiness and require additional evaluation and analysis. They also include city requested “holds” and “swaps.”

Municipality – requesting / sponsor municipality.

Project Number -a unique project identifier. Projects with numbers that include “.x” reflect multi-part projects.

Project Name - provided by municipality.

Work Mix - primary type of work.

Phase - Municipality identified first phase of work (Planning, Design, Right-of-way, or Construction) required.

Fiscal Year 2020 Recommendation - indicates recommend year and phase of work being recommended. Projects identified as Rank, Swap or Hold have not been reviewed for funding readiness and require additional analysis before being recommended for funding in future fiscal years.

Surtax Plan Estimate - cost estimate provided by municipality to County when originally submitting project for inclusion in the Surtax Financial Plan.

Recommended Phase Funding - dollar amount being recommended for funding based upon the Phase required (see notes on calculations) and latest cost estimates provided by municipalities. This amount does not fully fund projects except in the case of construction phase projects.

Notes:

- (1) The Municipal Surtax Capital Projects Priorities (Fiscal Year 2020) was developed by the Broward MPO Surtax Services in partnership with the municipalities in Broward County. All project information was provided by the municipalities.
- (2) All projects were provided by Broward County and were contained in the Surtax Plan approved by the voters in November 2018.
- (3) The Municipal Surtax Capital Projects Priorities (Fiscal Year 2020), consistent with the Surtax Ordinance, the Tri-Party Interlocal Agreement, and Bi-Party Interlocal Agreement, is the output of the data-driven ranking tool utilizing the evaluation criteria, point distribution, and program readiness approach established in coordination with the municipalities.
- (4) Projects with numbers that include “.x” reflect multi-part projects.
- (5) As directed by Broward County, the following percentages are used to calculate the recommended phase funding since the projects in the Surtax Plan are assumed to be the total cost of the required phase(s) to complete the project:
 - Planning: 3% of the total cost of the project in the Surtax Plan.
 - Design: 12% of the total cost of the project in the Surtax Plan.
 - Construction (includes CEI): 85% of the total cost of the project in the Surtax Plan.
 - Right-of-way phase costs are project specific.
- (6) The Broward MPO Surtax Services selected the Cycle 1 (Fiscal Year 2020) funding goal of \$70 - \$80 million of the total \$120 million available (30-Year Surtax Financial Plan) since the County did not provide specific guidance. This goal was selected to allow for adequate funds for Community Shuttle Bus and Rehabilitation and Maintenance projects to be funded by the County.

Project Ranking	Municipality	Project Number	Project Name	Work Mix	Phase	Fiscal Year 2020 Recommendation	Surtax Plan Estimate	Recommended Phase Funding
1	Wilton Manors	WILT-006	Roadway Median landscape improvements	Bicycle Pedestrian Infrastructure	Construction	YEAR 1-Construction	\$6,000,000	\$247,711
22	Wilton Manors	WILT-012	Complete Streets	Bicycle Pedestrian Infrastructure	Construction	YEAR 1-Construction	\$1,000,000	\$629,804
29	Wilton Manors	WILT-007.1	Parking	Bicycle Pedestrian Infrastructure	Construction	YEAR 1-Construction	\$15,000,000	\$849,475
33	Wilton Manors	WILT-013	Electronic Message Boards / Wayfinding	Bicycle Pedestrian Infrastructure	Construction	YEAR 1-Construction	\$1,000,000	\$639,650
49	Wilton Manors	WILT-009	Bus Benches And Shelters	Transit	Planning	YEAR 1-Planning	\$6,000,000	\$180,000
73	Wilton Manors	WILT-003	Complete Streets	Bicycle Pedestrian Infrastructure	Design	YEAR 1-Design	\$2,000,000	\$240,000
100	Wilton Manors	WILT-015	Intersection Improvements (Gateway Design)	Landscaping, Hardscape, Signage, Lighting	Planning	YEAR 1-Planning	\$13,200,000	\$396,000
302	Wilton Manors	WILT-008	Transit Connectivity	Bicycle Pedestrian Infrastructure	Planning	RANK	\$8,000,000	
373	Wilton Manors	WILT-016	Parking Structure	Capacity Increase, Widening	NA	SWAP	\$0	
376	Wilton Manors	WILT-001	Sidewalk Connectivity	Bicycle Pedestrian Infrastructure	Design	RANK	\$1,200,000	
409	Wilton Manors	WILT-011	Community Bus	Transit	NA	HOLD	\$0	
494	Wilton Manors	WILT-010	Storm Sewer Line Infrastructure	Resiliency Improvements	Design	RANK	\$4,300,000	
510	Wilton Manors	WILT-004	Fiber Optic Installation	Fiber	NA	RANK	\$18,000,000	



RANK Projects requested by municipalities to be ranked for funding.
HOLD Projects requested by municipalities to be put on hold from funding for various reasons.
SWAP Projects requested by municipalities to be swapped out in February 2021.
YEAR 1 Projects that are recommended for funding in Fiscal Year 2020.

Notes:

- (1) The Municipal Surtax Capital Projects Priorities (Fiscal Year 2020) was developed by the Broward MPO Surtax Services in partnership with the municipalities in Broward County. All project information was provided by the municipalities.
- (2) All projects were provided by Broward County and were contained in the Surtax Plan approved by the voters in November 2018.
- (3) The Municipal Surtax Capital Projects Priorities (Fiscal Year 2020), consistent with the Surtax Ordinance, the Tri-Party Interlocal Agreement, and Bi-Party Interlocal Agreement, is the output of the data-driven ranking tool utilizing the evaluation criteria, point distribution, and program readiness approach established in coordination with the municipalities.
- (4) Projects with numbers that include ".x" reflect multi-part projects.
- (5) As directed by Broward County, the following percentages are used to calculate the recommended phase funding since the projects in the Surtax Plan are assumed to be the total cost of the required phase(s) to complete the project:
 - Planning: 3% of the total cost of the project in the Surtax Plan.
 - Design: 12% of the total cost of the project in the Surtax Plan.
 - Construction (includes CEI): 85% of the total cost of the project in the Surtax Plan.
 - Right-of-way phase costs are project specific.
- (6) The Broward MPO Surtax Services selected the Cycle 1 (Fiscal Year 2020) funding goal of \$70 - \$80 million of the total \$120 million available (30-Year Surtax Financial Plan) since the County did not provide specific guidance. This goal was selected to allow for adequate funds for Community Shuttle Bus and Rehabilitation and Maintenance projects to be funded by the County.

Municipality	Wilton Manors
Project ID	WILT-006
Project Name	Roadway median landscape improvements
From Location	Middle River (South)...City Limit
To Location	NE 26th Street
Work Mix	Bicycle Pedestrian Infrastructure
Phase	Construction
Fiscal Year 2020 Recommendation	YEAR 1 - Construction
Recommended Phase Funding	\$247,711
City Submitted Information	

Walkability, ADA access

Project Description

Project Scope This project is following the completion of the FDOT complete streets reconstruction of Wilton Drive. The City intends to install irrigation, landscaping, and wayfinding signage within the existing right-of-way. Work will occur in medians, roadway bump outs, and sidewalk areas.

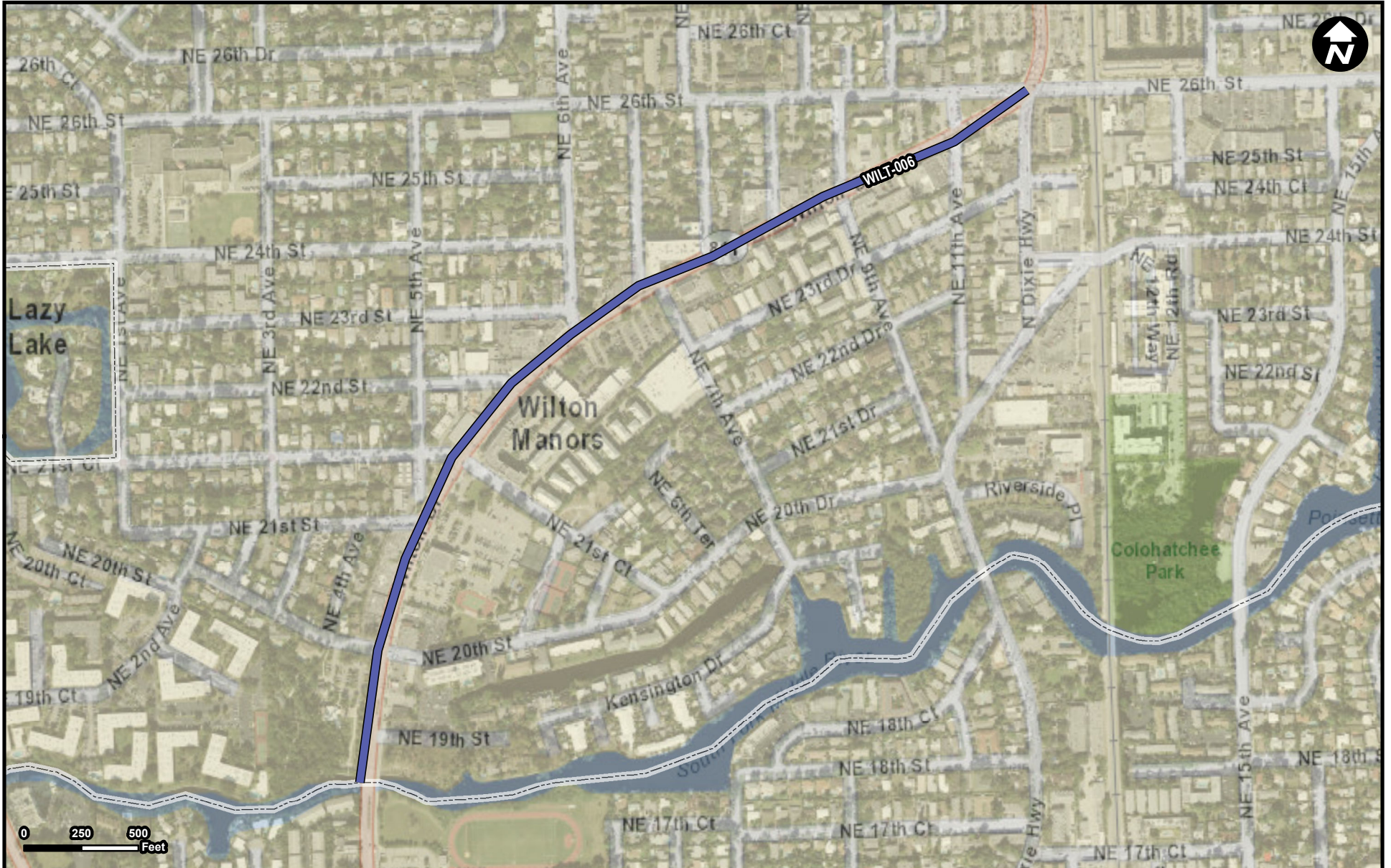
Project Objective The project will result in an enhanced pedestrian environment by providing shade over sidewalks, median safety areas and parking spaces along the roadway. It will also provide improved signage to parking facilities, transit connections, important buildings, and points of interest within the city.

Estimated Project Cost	\$6,000,000
Project Type	Signs, Landscaping, Walls
Primary Work Mix	Landscaping
Secondary Work Mix	Signing/Pavement
Has design been completed?	Yes
If Design completed, what percent?	100
Is right-of-way required?	No
Has right-of-way/utility relocation coordination occurred?	
Point of Contact - First Name	Todd
Point of Contact - Last Name	DeJesus
Point of Contact - Phone	954-390-2105
Point of Contact - Email	tdejesus@wiltonmanors.com




Construction Readiness Review	
Detailed budget provided?	Yes
Project timeline provided?	Yes
Is the project ready to submit for permits?	Yes

Readiness Review Comments: The City provided plans and a detailed cost estimate for the proposed improvements and is awaiting the outcome of the surtax funding prior to bidding the proposed improvements for implementation. Project entails landscape improvements along Wilton Drive all within public ROW. The City provided detailed plans and a cost estimate for the improvements. The cost estimate is in line with current industry pricing.

The Municipal Surtax Capital Project Overview was prepared by the Broward MPO in partnership with the municipalities in Broward County. All project information was provided by the municipalities. Projects were provided by Broward County and were contained in the Surtax Plan approved by the voters in November 2018. Project review comments were based on the information provided by the municipalities.



Legend

-  WILT-006
-  Municipality
-  Unincorporated

Municipality: Wilton Manors

FROM: Middle River (South) - City Limit
TO: NE 26th Street

Note: The Municipal Surtax Capital Project Map was prepared by the Broward MPO Surtax Services. The project location information was provided by the municipality.

Municipality	Wilton Manors
Project ID	WILT-012
Project Name	Complete Streets
From Location	NE 26th Street
To Location	Middle River/Southern Border
Work Mix	Bicycle Pedestrian Infrastructure
Phase	Construction
Fiscal Year 2020 Recommendation	YEAR 1 - Construction
Recommended Phase Funding	\$629,804
City Submitted Information	

Crosswalks, bike lane buffer, traffic calming

Project Description

Project Scope

Raised intersections are proposed along NE 15th Ave at the intersection of NE 15th Ave and NE 24th St, NE 22nd St, and NE 21st St. Another is proposed between Colohatchee Park and the Boat Ramp. This project also consists of the installation of 5 foot wide sidewalks on the south side of NE 24th St between NE 15th Ave and NE 13th Ave and the north side of NE 24th St between NE 15th Ave and NE 17th Terr. A raised intersection will be installed at the intersection of NE 24th St and NE 16th Ave.

Project Objective

This project fulfills an existing desire of the residents of Wilton Manors to provide safer roadway conditions (NE 15th Avenue) and better connectivity and safety for pedestrians (NE 24th Street). The raised intersections will slow traffic along a curved roadway that has residents very concerned and has a history of accidents. The sidewalk addition will provide complete connectivity between NE 15th Avenue and our recently completed Complete Streets project at Old Dixie Highway.

Estimated Project Cost	\$1,000,000
Project Type	Complete Streets, Safety
Primary Work Mix	Intersection
Secondary Work Mix	Safety Project
Has design been completed?	Yes
If Design completed, what percent?	30
Is right-of-way required?	No
Has right-of-way/utility relocation coordination occurred?	
Point of Contact - First Name	Todd
Point of Contact - Last Name	DeJesus
Point of Contact - Phone	954-390-2105
Point of Contact - Email	tdejesus@wiltonmanors.com




Construction Readiness Review	
Detailed budget provided?	Yes
Project timeline provided?	Yes
Is the project ready to submit for permits?	Yes

Readiness Review Comments: The City provided plans and a detailed cost estimate for the proposed improvements and are awaiting the outcome of the surtax funding prior to completing the design and permitting for the proposed improvements for implementation. Project entails roadway improvements that includes traffic calming, signage, pavement markings, and road repair improvements within public ROW. The City provided preliminary plans and a cost estimate for the improvements. The cost estimate is in line with current industry pricing.

The Municipal Surtax Capital Project Overview was prepared by the Broward MPO in partnership with the municipalities in Broward County. All project information was provided by the municipalities. Projects were provided by Broward County and were contained in the Surtax Plan approved by the voters in November 2018. Project review comments were based on the information provided by the municipalities.



Legend

-  WILT-012
-  Municipality
-  Unincorporated

Municipality: Wilton Manors

FROM: NE 26th Street
TO: Middle River/Southern Border


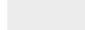
Note: The Municipal Surtax Capital Project Map was prepared by the Broward MPO Surtax Services. The project location information was provided by the municipality.

Municipality	Wilton Manors
Project ID	WILT-007.1
Project Name	Parking
From Location	
To Location	
Work Mix	Bicycle Pedestrian Infrastructure
Phase	Construction
Fiscal Year 2020 Recommendation	YEAR 1 - Construction
Recommended Phase Funding	\$849,475
City Submitted Information	
	Lots and Structures
Project Description	
Project Scope	The project consists of the construction of a 32 lot parking facility on a 0.52 acre parcel, providing connectivity to both Colohatchee Park and NE 15th Street. The lot will include a trailhead connecting to existing trails in the park. NE 15th Avenue has existing dedicated bike lanes and transit stops within walking distance of the parcel.
Project Objective	The project addresses a few of local issues. The first is a lack of parking for the City's newly renovated Colohatchee Park. This park is one of the premiere dog parks in the region. Currently access is difficult and not ADA compliant. Parking is limited as well. The project will also include a new trail head connecting to existing multipurpose trails within the park and to existing dedicated bicycle lanes and nearby bus stops on NE 15th Avenue.
Estimated Project Cost	\$15,000,000
Project Type	Other - Parking
Primary Work Mix	Parking Facility
Secondary Work Mix	
Has design been completed?	Yes
If Design completed, what percent?	30
Is right-of-way required?	No
Has right-of-way/utility relocation coordination occurred?	
Point of Contact - First Name	Todd
Point of Contact - Last Name	DeJesus
Point of Contact - Phone	954-390-2105
Point of Contact - Email	tdejesus@wiltonmanors.com
Construction Readiness Review	
Detailed budget provided?	Yes
Project timeline provided?	Yes
Is the project ready to submit for permits?	Yes
Readiness Review Comments:	The City provided plans and via email stated that the project cost was estimated at \$500,000.00 for the proposed improvements and are awaiting the outcome of the surtax funding prior to completing the design and permitting for the proposed improvements for implementation. Project entails a public parking lot adjacent to a proposed transit oriented development. The City owns the property and have provided plans and a detailed cost estimate of the proposed improvements. The cost estimate is in line with current industry pricing.

The Municipal Surtax Capital Project Overview was prepared by the Broward MPO in partnership with the municipalities in Broward County. All project information was provided by the municipalities. Projects were provided by Broward County and were contained in the Surtax Plan approved by the voters in November 2018. Project review comments were based on the information provided by the municipalities.



Legend

-  WILT-007.1
-  Municipality
-  Unincorporated

Municipality: Wilton Manors

FROM:
TO:

Note: The Municipal Surtax Capital Project Map was prepared by the Broward MPO Surtax Services. The project location information was provided by the municipality.



Municipality	Wilton Manors
Project ID	WILT-013
Project Name	Electronic Message Boards
From Location	
To Location	
Work Mix	Bicycle Pedestrian Infrastructure
Phase	Construction
Fiscal Year 2020 Recommendation	YEAR 1 - Construction
Recommended Phase Funding	\$639,650
City Submitted Information	

Portable and permanent boards to advise of traffic issues

Project Description

Project Scope

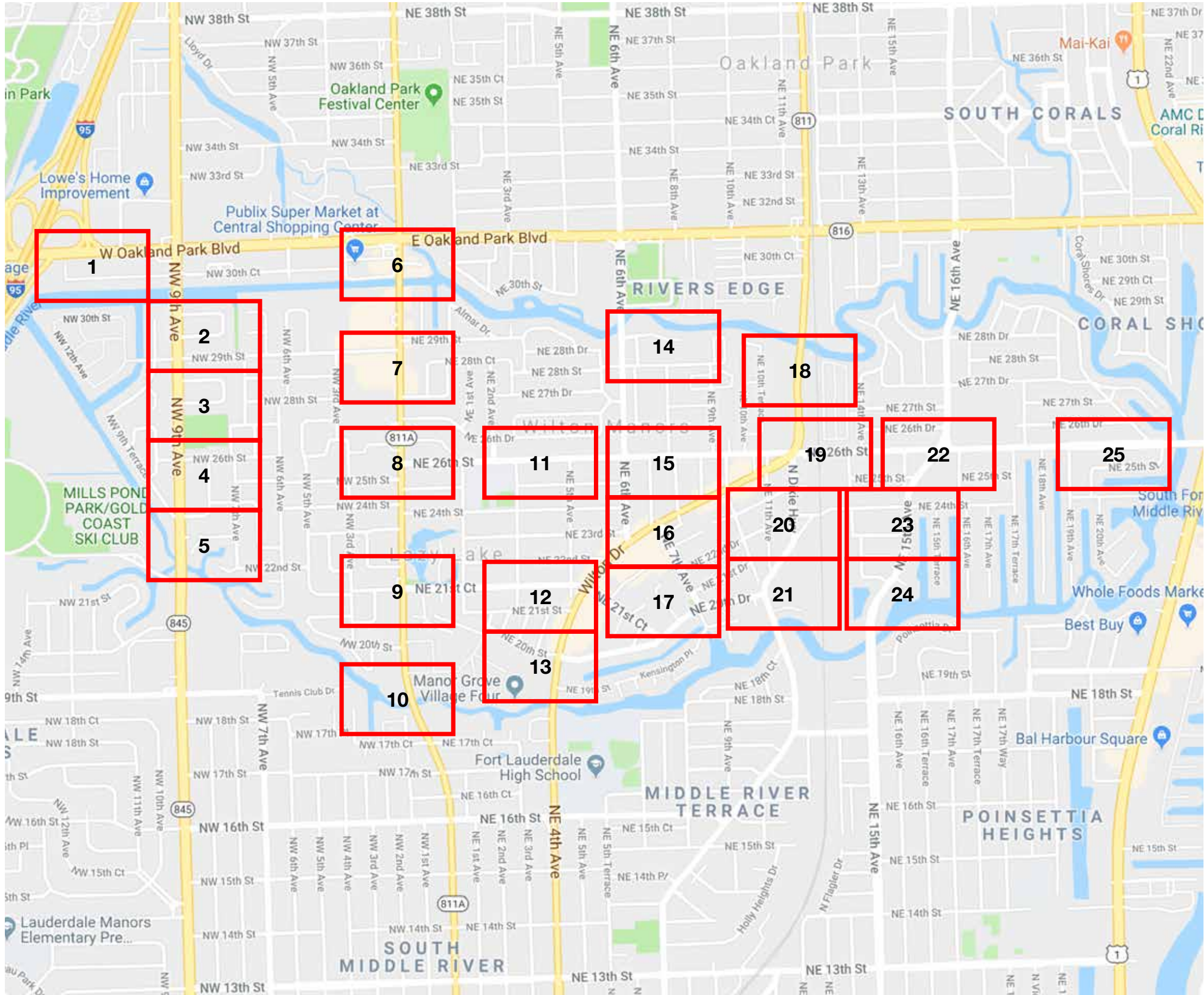
Project Objective

Estimated Project Cost	\$1,000,000
Project Type	Other - Message Board
Primary Work Mix	
Secondary Work Mix	
Has design been completed?	
If Design completed, what percent?	
Is right-of-way required?	No
Has right-of-way/utility relocation coordination occurred?	
Point of Contact - First Name	Todd
Point of Contact - Last Name	DeJesus
Point of Contact - Phone	954-390-2105
Point of Contact - Email	tdejesus@wiltonmanors.com
Construction Readiness Review	
Detailed budget provided?	Yes
Project timeline provided?	Yes
Is the project ready to submit for permits?	Yes

Readiness Review Comments:

City provided plans for a Citywide wayfinding signage implementation and a detailed cost estimate. The City is ready to bid the project but is just waiting on the surtax funding outcome. Project entails installation of wayfinding signage throughout the City within public ROW. A Citywide wayfinding signage implementation plan and a detailed cost estimate were provided. The cost estimate is in line with current industry pricing.

The Municipal Surtax Capital Project Overview was prepared by the Broward MPO in partnership with the municipalities in Broward County. All project information was provided by the municipalities. Projects were provided by Broward County and were contained in the Surtax Plan approved by the voters in November 2018. Project review comments were based on the information provided by the municipalities.



PROPOSED LOCATIONS

MAP KEY

Numbers within each red rectangle represent pages with blown up details.

NOTE: Sign locations are approximate. Sign Contractor will verify locations on site with a City Representative prior to start of fabrication.

Municipality	Wilton Manors
Project ID	WILT-009
Project Name	Bus benches and shelters
From Location	
To Location	
Work Mix	Transit
Phase	Planning
Fiscal Year 2020 Recommendation	YEAR 1 - Planning
Recommended Phase Funding	\$180,000
City Submitted Information	

Construction, maintenance, repairs and accessibility

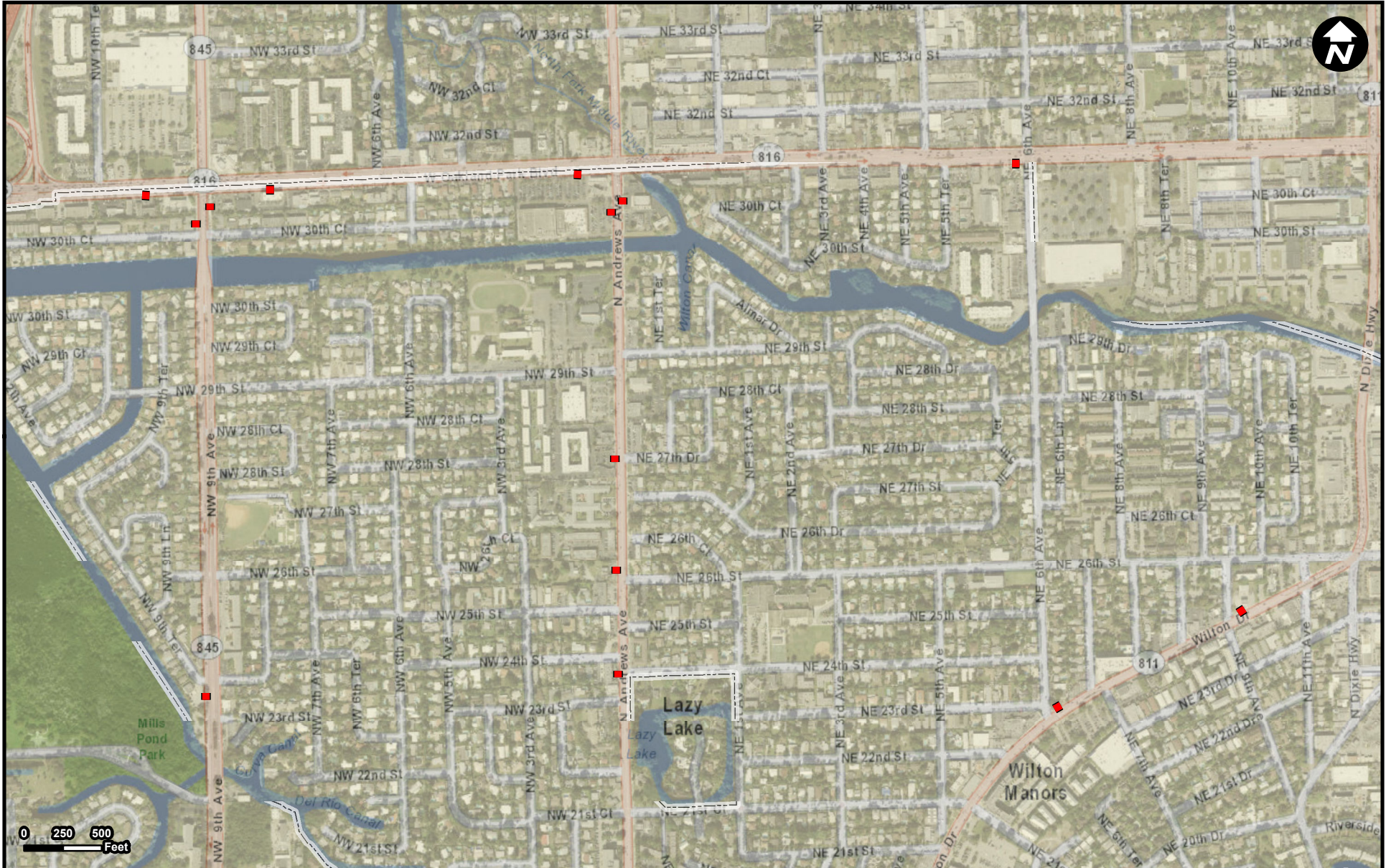
Project Description

Project Scope



Project Objective

Estimated Project Cost	\$6,000,000
Project Type	Transit
Primary Work Mix	
Secondary Work Mix	
Has design been completed?	
If Design completed, what percent?	
Is right-of-way required?	No
Has right-of-way/utility relocation coordination occurred?	
Point of Contact - First Name	
Point of Contact - Last Name	
Point of Contact - Phone	
Point of Contact - Email	

The Municipal Surtax Capital Project Overview was prepared by the Broward MPO in partnership with the municipalities in Broward County. All project information was provided by the municipalities. Projects were provided by Broward County and were contained in the Surtax Plan approved by the voters in November 2018. Project review comments were based on the information provided by the municipalities.



Legend

-  WILT-009
-  Municipality
-  Unincorporated

Municipality: Wilton Manors

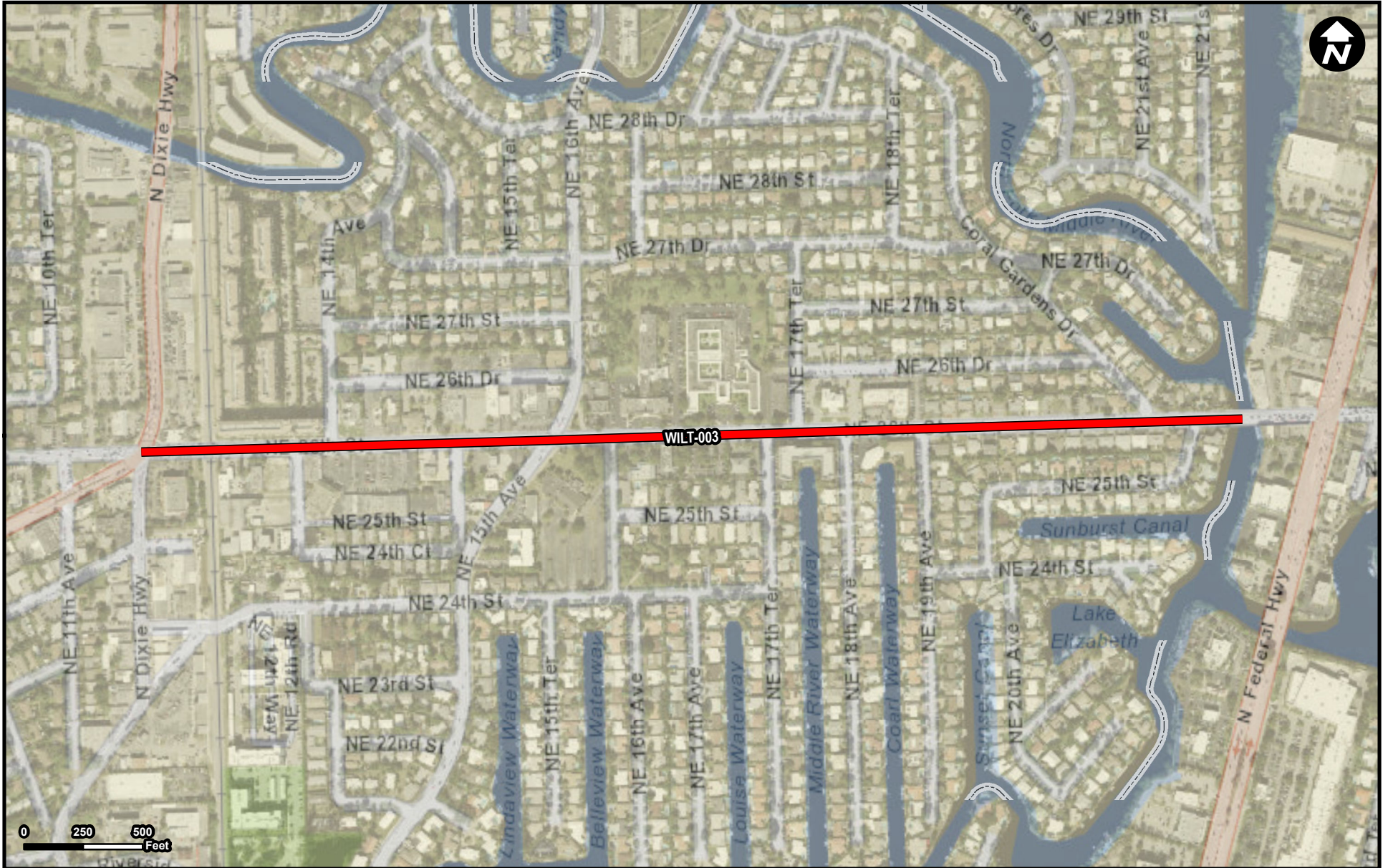
FROM:
TO:

Note: The Municipal Surtax Capital Project Map was prepared by the Broward MPO Surtax Services. The project location information was provided by the municipality.




Municipality	Wilton Manors
Project ID	WILT-003
Project Name	Complete Streets
From Location	Dixie Highway
To Location	City Limits at Eastern Middle River, just west of US 1.
Work Mix	Bicycle Pedestrian Infrastructure
Phase	Design
Fiscal Year 2020 Recommendation	YEAR 1 - Design
Recommended Phase Funding	\$240,000
City Submitted Information	
	Traffic calming, bike & pedestrian lanes
Project Description	
Project Scope	This project will consist of the widening of existing sidewalks on both sides of NE 26th Street between Dixie Highway and the city limits at the Middle River bridge. The existing travel lanes will be narrowed by one foot and the existing shoulders will be utilized. The sidewalk widths are proposed to be increased from 4 to 7 feet where feasible.
Project Objective	The current sidewalks within the corridor do not meet ADA requirements. They are only four feet in width and various poles and other conflicts are located within the existing sidewalks. The project will result in a safer pedestrian environment along the corridor. This will also allow for improved bus shelters.
Estimated Project Cost	\$2,000,000
Project Type	Complete Streets, Safety
Primary Work Mix	Sidewalk
Secondary Work Mix	Safety Project
Has design been completed?	Yes
If Design completed, what percent?	
Is right-of-way required?	No
Has right-of-way/utility relocation coordination occurred?	
Point of Contact - First Name	Todd
Point of Contact - Last Name	DeJesus
Point of Contact - Phone	954-390-2105
Point of Contact - Email	tdejesus@wiltonmanors.com

The Municipal Surtax Capital Project Overview was prepared by the Broward MPO in partnership with the municipalities in Broward County. All project information was provided by the municipalities. Projects were provided by Broward County and were contained in the Surtax Plan approved by the voters in November 2018. Project review comments were based on the information provided by the municipalities.



Legend

-  WILT-003
-  Municipality
-  Unincorporated

Municipality: Wilton Manors

FROM: Dixie Highway
TO: City Limits at Eastern Middle River, just west of US 1.

Note: The Municipal Surtax Capital Project Map was prepared by the Broward MPO Surtax Services. The project location information was provided by the municipality.



Municipality	Wilton Manors
Project ID	WILT-015
Project Name	Intersection Improvements (Gateway Design)
From Location	
To Location	
Work Mix	Landscaping, Hardscape, Signage
Phase	Planning
Fiscal Year 2020 Recommendation	YEAR 1 - Planning
Recommended Phase Funding	\$396,000
City Submitted Information	

Gateway Design for Oakland Park Blvd & Andrews Avenue

Project Description

Project Scope

Project Objective

Estimated Project Cost	\$13,200,000
Project Type	Signs, Landscaping, Walls
Primary Work Mix	
Secondary Work Mix	
Has design been completed?	
If Design completed, what percent?	
Is right-of-way required?	No
Has right-of-way/utility relocation coordination occurred?	
Point of Contact - First Name	
Point of Contact - Last Name	
Point of Contact - Phone	
Point of Contact - Email	

The Municipal Surtax Capital Project Overview was prepared by the Broward MPO in partnership with the municipalities in Broward County. All project information was provided by the municipalities. Projects were provided by Broward County and were contained in the Surtax Plan approved by the voters in November 2018. Project review comments were based on the information provided by the municipalities.



Legend

- WILT-015
- Municipality
- Unincorporated

Municipality: Wilton Manors

FROM:
TO:

Note: The Municipal Surtax Capital Project Map was prepared by the Broward MPO Surtax Services. The project location information was provided by the municipality.