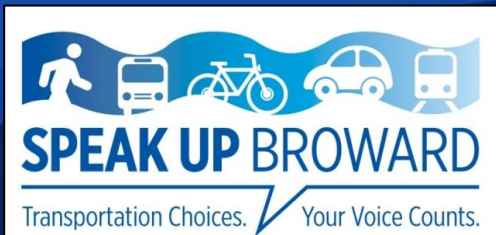


Let's Talk Transportation

TODAY



Bus doesn't
come near me

Traffic wastes
my time

Love to walk-
But not safe

Can't afford
the gas

Takes too
long

TOMORROW

Faster Trip

One-Seat Ride

Better Connections

Safe Sidewalks

Tri-Rail
Bike Train

A way to work

Who Governs the Broward MPO?

37 Member Board

- 14 - Largest Cities (Census population)
- 3 - County Commissioners
- 1 - School Board
- 1 - South Florida Regional Transportation Authority (SFRTA)
- 18 – Alternates – voting rights when others are absent

Three Advisory Boards

- Technical Coordinating Committee (TCC)
- Community Involvement Roundtable (CIR)
- Local Coordinating Board for Transportation Disadvantaged (LCB)



Introducing...Speak Up Broward

New Initiative

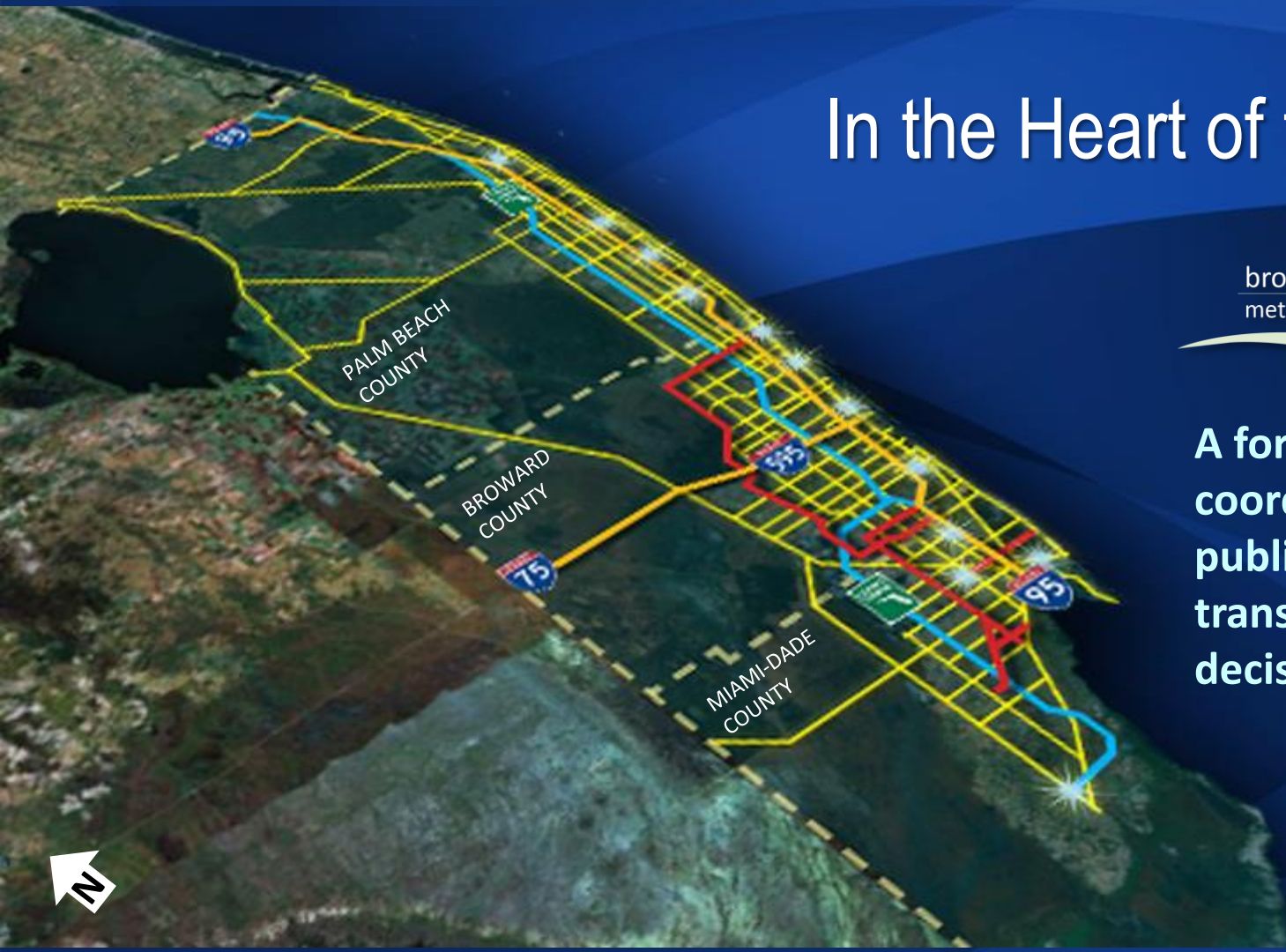
- Grassroots Effort
- Engaged in Fact Finding
- Focused on Future Funding Needs



In the Heart of the Region

broward **MPO**
metropolitan planning organization

**A forum for interagency
coordination and
public input into
transportation funding
decisions.**



Let's Talk About Transportation

- How Does Transportation Affect YOU?
- What Do We Have TODAY?
- Are We Prepared for Our FUTURE?



Why Is Transportation Important To You?

**What's in it
for me?**



Why Is Transportation Important To You?

It Costs You!

To own and operate an average Sedan per year...

2002



\$6,470

=

2013



\$9,122

Source: American Automobile Association (AAA)

It Costs You! In Broward we spend...

26%

Transportation



36%

Housing



62% Average Income

Why Is Transportation Important To You?

IT COSTS US ALL

In 2011, South Florida drivers spent a collective

174.6
million hours
**STUCK IN
TRAFFIC**

\$3.7
billion dollars
**IN LOST
PRODUCTIVITY**

1.9+
million pounds
**OF GREEN
HOUSE GASES**
pumped into our air

Source: Texas Transportation Institute Urban Mobility Report 2012

Why Is Transportation Important To You?

Safety

Pedestrian fatalities per 100,000 persons in the U.S.



2.57

Florida – Highest in nation

1.42

U.S. Average

Source: National Highway Traffic Safety Administration

Why Is Transportation Important To You?

Economic Returns



=



\$1 Public
Transportation
Investment

\$4 Return on
Investment

\$1 B = 36,000
Jobs

How Do We Prepare for Our Future?

**What do
we really
NEED?**



Broward's Plan Update

Due Fall 2014

GOALS:

Move People

Create Jobs

Strengthen Communities

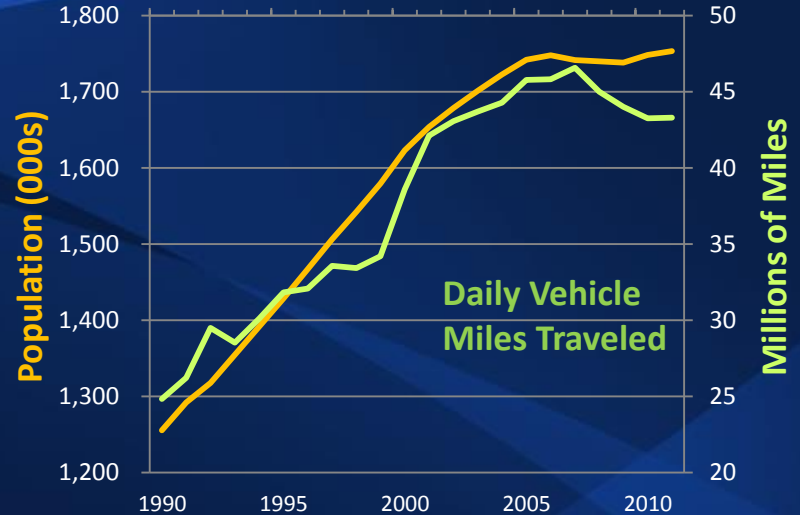


move people • create jobs • strengthen communities

www.Commitment2040.org

How Will We Grow?

- Population will grow slower
- Many of us will grow older
- People have been driving less
- No more room for new roads
- No more room for sprawl



Plenty of room for more tourists

Broward's Transportation Choices Today

Workforce
Takes Transit¹



3.2%

Almost always
drive²



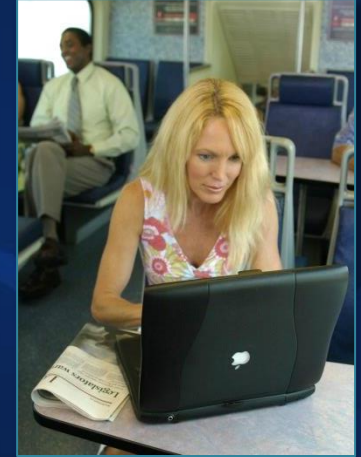
83%

Bus Riders say
transit only choice³



22%

Tri-Rail Riders
6 months or more⁴



88%

¹U.S. Census American Community Survey 2012; ²Baseline Survey conducted April 17-24, 2013; ³Broward County Transit Survey July 15-18, 2013;

⁴South Florida Regional Transportation Authority Online Survey, March-May 2013

Today's Transportation Choices

Turnpike

 Tollways

Commuter Rail

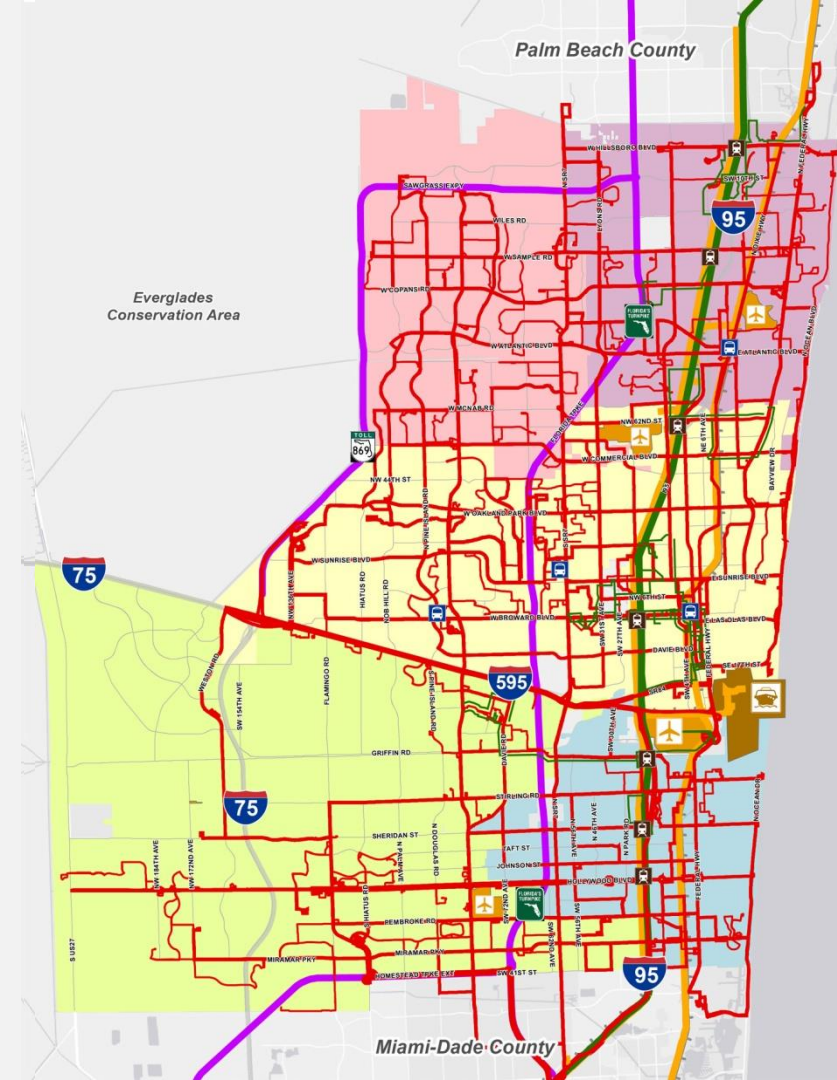
 Tri-Rail  Connecting Shuttles

Bus Transit

 Express  Local  Community

Intermodal (ship-rail-plane-trucking)

 Seaport  Airport  Freight



New Ways to Get Around

Coming Soon...



2014

■ 595 Express

2014

■ 95 Express

2017

■ 75 Express

South of Broward
Boulevard to Miami

Managed Lanes



New Ways to Get Around

Coming Soon...

2016

■ All Aboard Florida

*Miami to Orlando with stations in
Fort Lauderdale and West Palm Beach*



New Ways to Get Around

Coming Soon...

2017

- The Wave
Modern Streetcar



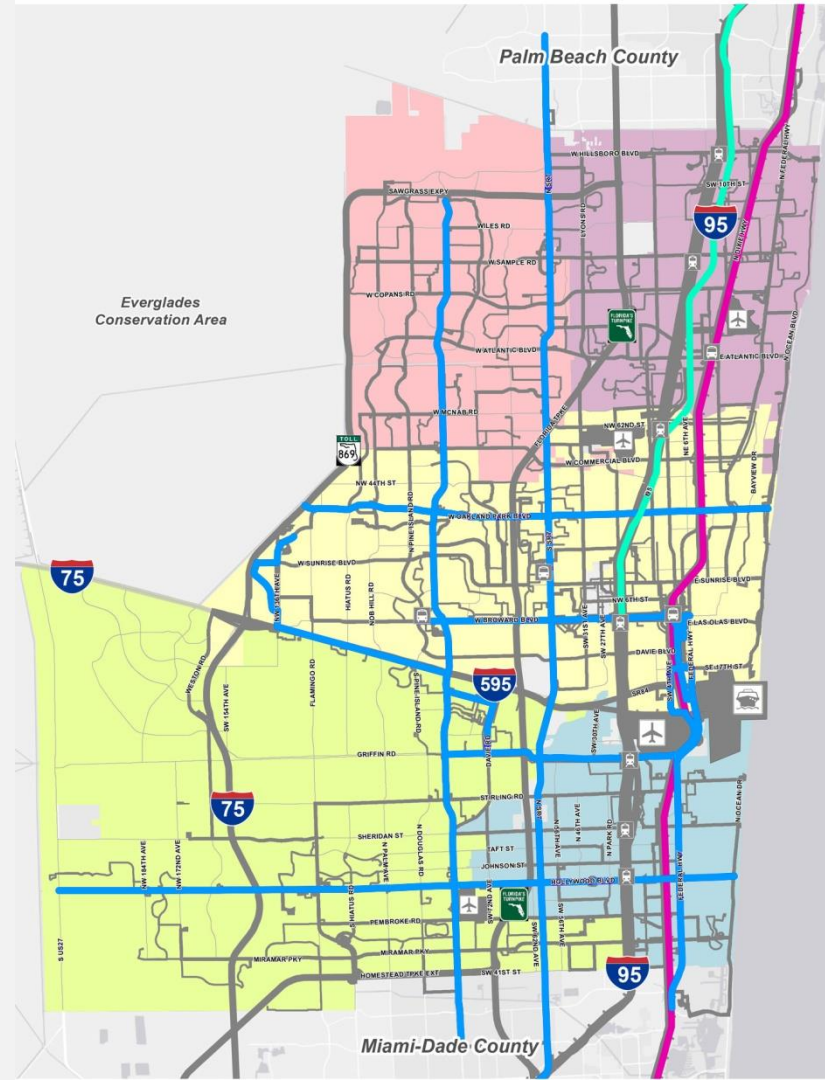
Under Study

■ Tri-Rail Coastal Link

■ Corridor Studies

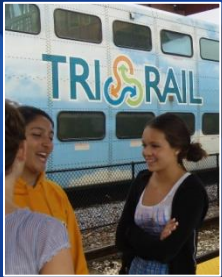
- Central Broward East-West
- Oakland Park Boulevard
- Broward Boulevard
- University Drive
- State Road 7
- Hollywood/Pines Boulevard

■ 95 Express North of Broward Blvd



What's Missing?

Are We There Yet?



TODAY



Coming Soon...2017



What's Next?



What Can We Afford?
Financially Feasible Plan

MPO Board Action
Plan Adoption

2014

Jan - Mar

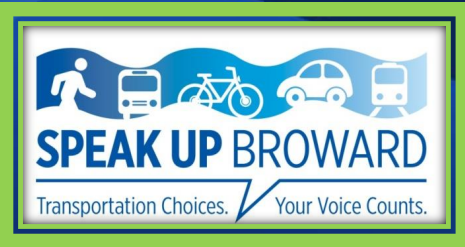
Jun - Aug

Apr - Jun

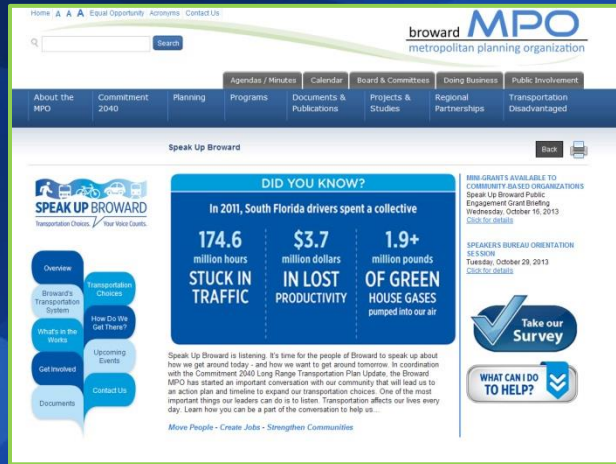
Sep - Dec

Scenarios & Funding
How To Meet Our Needs?

Path Forward
How Can We Get There?



Follow Us On...



The screenshot shows the Broward Metropolitan Planning Organization (MPO) website. The main navigation bar includes links for Home, Equal Opportunity, Accessibility, and Contact Us. A search bar is located at the top left. The secondary navigation bar lists various organizational areas: Agendas / Minutes, Calendar, Board & Committees, Doing Business, and Public Involvement. The tertiary navigation bar includes: About the MPO, Commitment 2040, Planning, Programs, Documents & Publications, Projects & Studies, Regional Partnerships, and Transportation Disadvantaged. The main content area is titled 'Speak Up Broward' and features a 'DID YOU KNOW?' section with statistics: 'In 2011, South Florida drivers spent a collective 174.6 million hours STUCK IN TRAFFIC, \$3.7 million dollars IN LOST PRODUCTIVITY, and 1.9+ million pounds OF GREEN HOUSE GASES pumped into our air.' Below this is a 'Take our Survey' button and a 'WHAT CAN I DO TO HELP?' button. A sidebar on the left contains a 'SPEAK UP BROWARD' logo and a list of links: Overview, Broward's Transportation System, What's in the Works, Get Involved, and Documents. A right sidebar contains information about a grant and a speakers bureau orientation session.

The Web:

www.SpeakUpBroward.org



Facebook:

SpeakUpBroward



Twitter:

@SpeakUp_Broward



LinkedIn:

Speak-Up-Broward



YouTube:

Broward MPO



Instagram:

SpeakUpBroward

Sign Up Today



Become a Speak Up Broward Ambassador

Contact:

Chris Ryan

MPO Public Information Officer 954-876-0036

Pamela Adams

Speakers Bureau 954-764-8500 or
pamelaadams@speakupbroward.org