

Legend

- SWRA-021
- Municipality
- Unincorporated

Suggested Work Mix:

- Primary Work Mix:**
- Secondary Work Mix:**

Project Description & Project Scope

- Resiliency Improvements**
- Safety Project**




Construct outfall from SW 61st Court to lake at SW 161 Avenue.

The project consists of excavation, clearing, installation of 1,000 linear feet of reinforced concrete (RCP) drainage pipe, installation of Florida Department of Transportation (FDOT) specified drainage inlets and a terminal headwall, associated grates,

FROM:
To:



Legend

-  SWRA-022
-  Municipality
-  Unincorporated

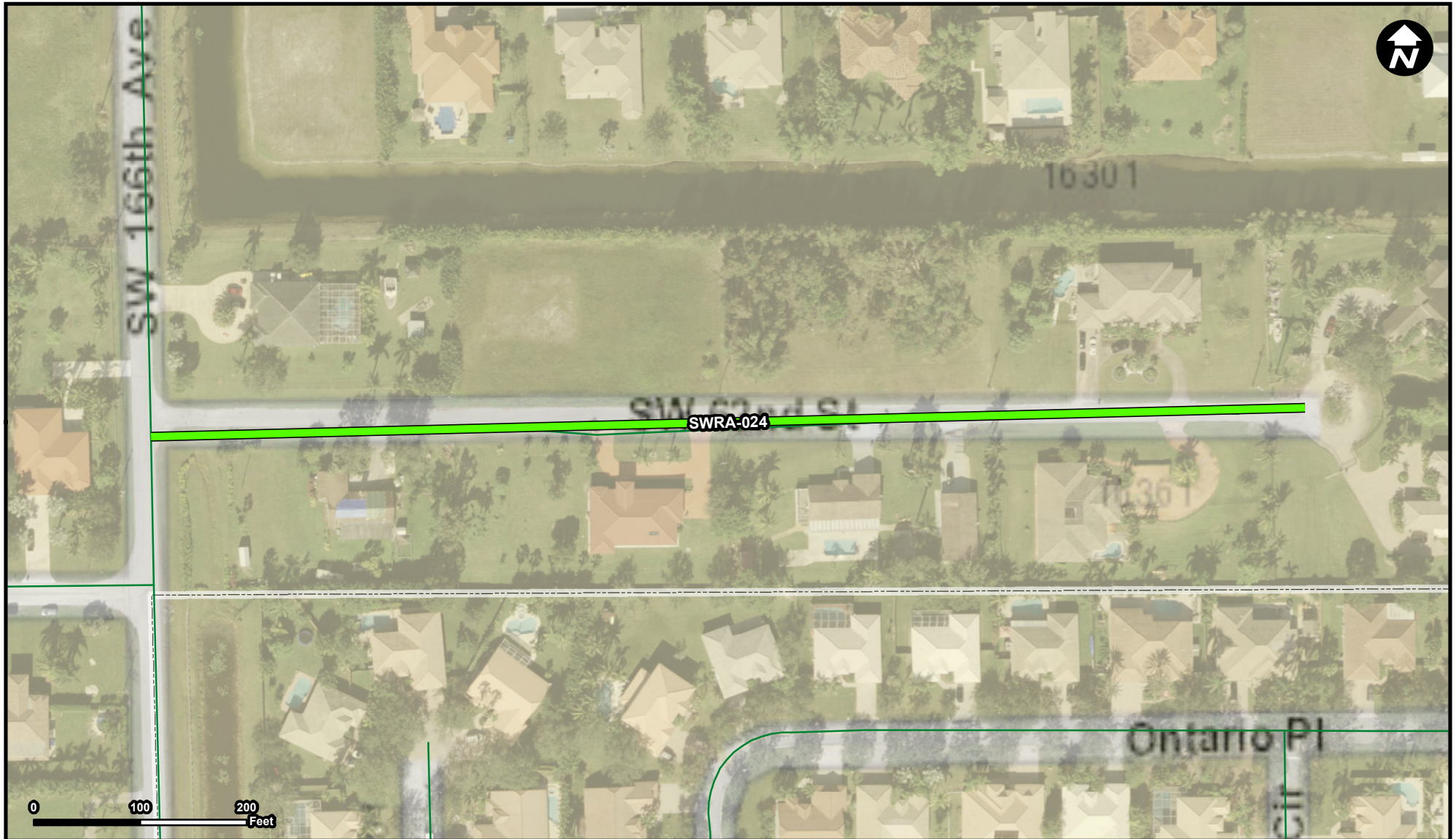
Suggested Work Mix: Resiliency Improvements
Primary Work Mix: Safety Project
Secondary Work Mix:

FROM:
To:

Project Description & Project Scope

Construct outfall from Dykes Road to canal at SW 164th Avenue.

The project consists of excavation, clearing, installation of 1,500 linear feet of reinforced concrete (RCP) drainage pipe, installation of Florida Department of Transportation (FDOT) specified drainage inlets and associated grates, associated erosion co



Legend

- SWRA-024
- Municipality
- Unincorporated

Suggested Work Mix: Resiliency Improvements

Primary Work Mix:

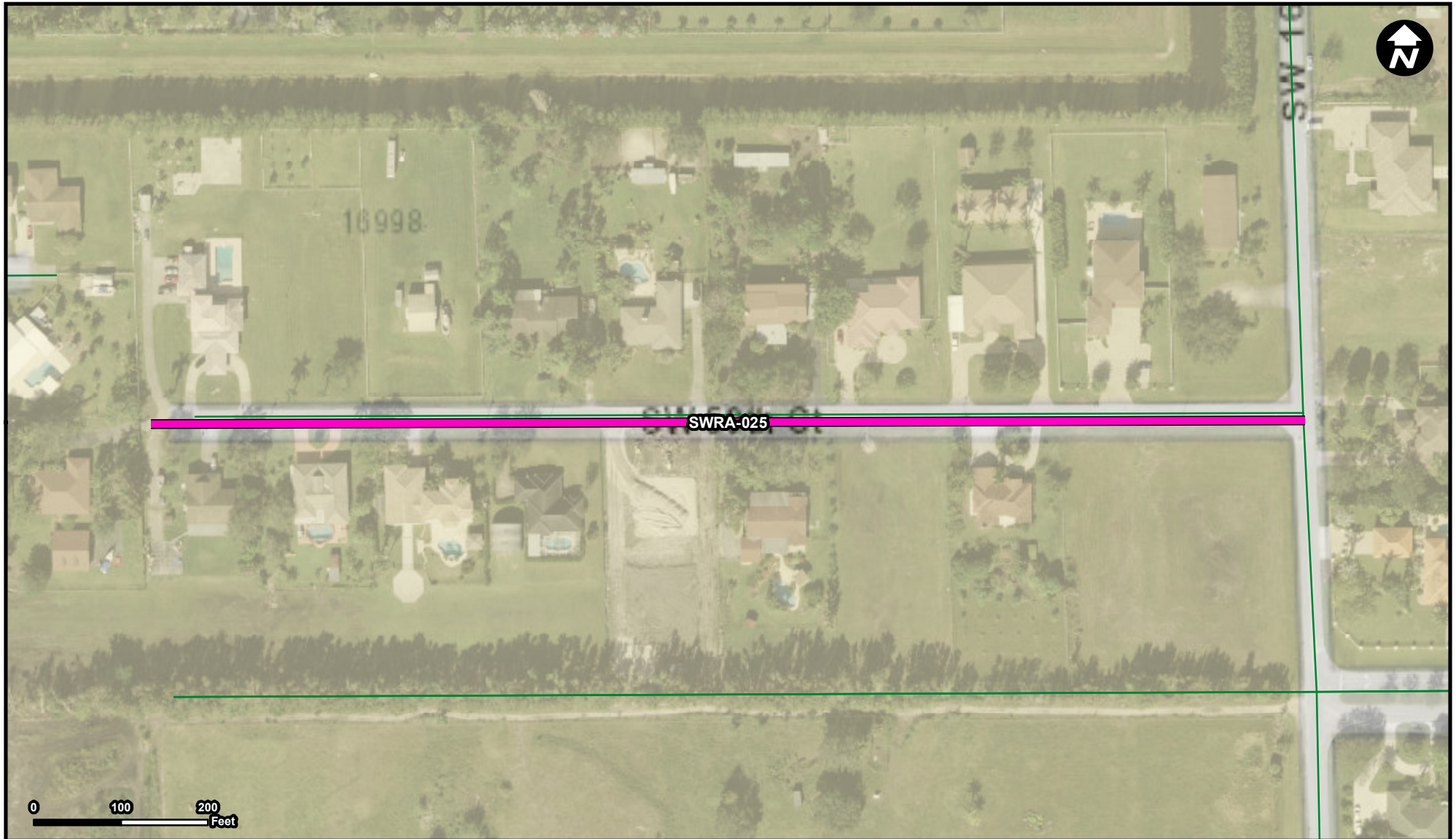
Secondary Work Mix:

Project Description & Project Scope




Construct an outfall from SW 62nd Street cul-de-sac north towards to canal.

The project consists of excavation, clearing, installation of approximately 1,100 linear feet of reinforced concrete (RCP) drainage pipe, installation of Florida Department of Transportation (FDOT) specified drainage inlets and a terminal headwall, assoc

FROM:
To:



Legend

-  SWRA-025
-  Municipality
-  Unincorporated

Suggested Work Mix:
Primary Work Mix:
Secondary Work Mix:

Resiliency Improvements
Safety Project

FROM:
To:




Project Description & Project Scope

Construct outfall from SW 59th Court north to canal.

The project consists of excavation, clearing, installation of approximately 600 linear feet of reinforced concrete (RCP) drainage pipe, installation of Florida Department of Transportation (FDOT) specified drainage inlets and a terminal headwall, associa



Legend

-  SWRA-031
-  Municipality
-  Unincorporated

Suggested Work Mix:

Primary Work Mix:

Secondary Work Mix:

Project Description & Project Scope

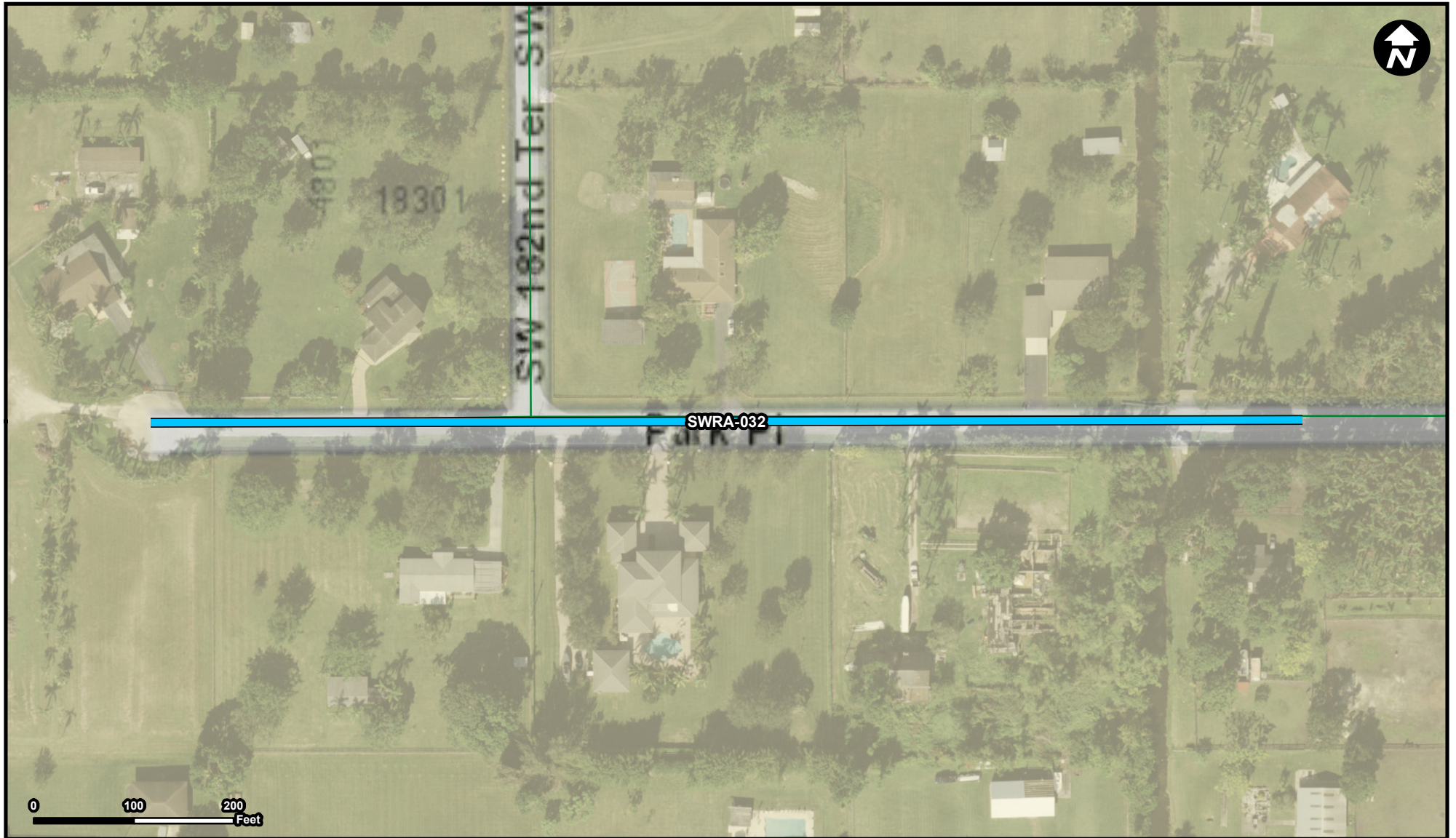
Resiliency Improvements

Safety Project




Interconnect at SW 54th Street and 17400 block

The project consists of excavation, clearing, installation of approximately 500 linear feet of reinforced concrete (RCP) drainage pipe, installation of Florida Department of Transportation (FDOT) specified drainage inlets, rehabilitating a culvert on SW

FROM:
To:



Legend

-  SWRA-032
-  Municipality
-  Unincorporated

Suggested Work Mix: Resiliency Improvements

Primary Work Mix:

Secondary Work Mix:




Project Description & Project Scope

Install catch basins and drainage piping to adjacent canal.

FROM:
To:



Legend

-  SWRA-033
-  Municipality
-  Unincorporated

Suggested Work Mix:

Primary Work Mix:

Secondary Work Mix:

Project Description & Project Scope

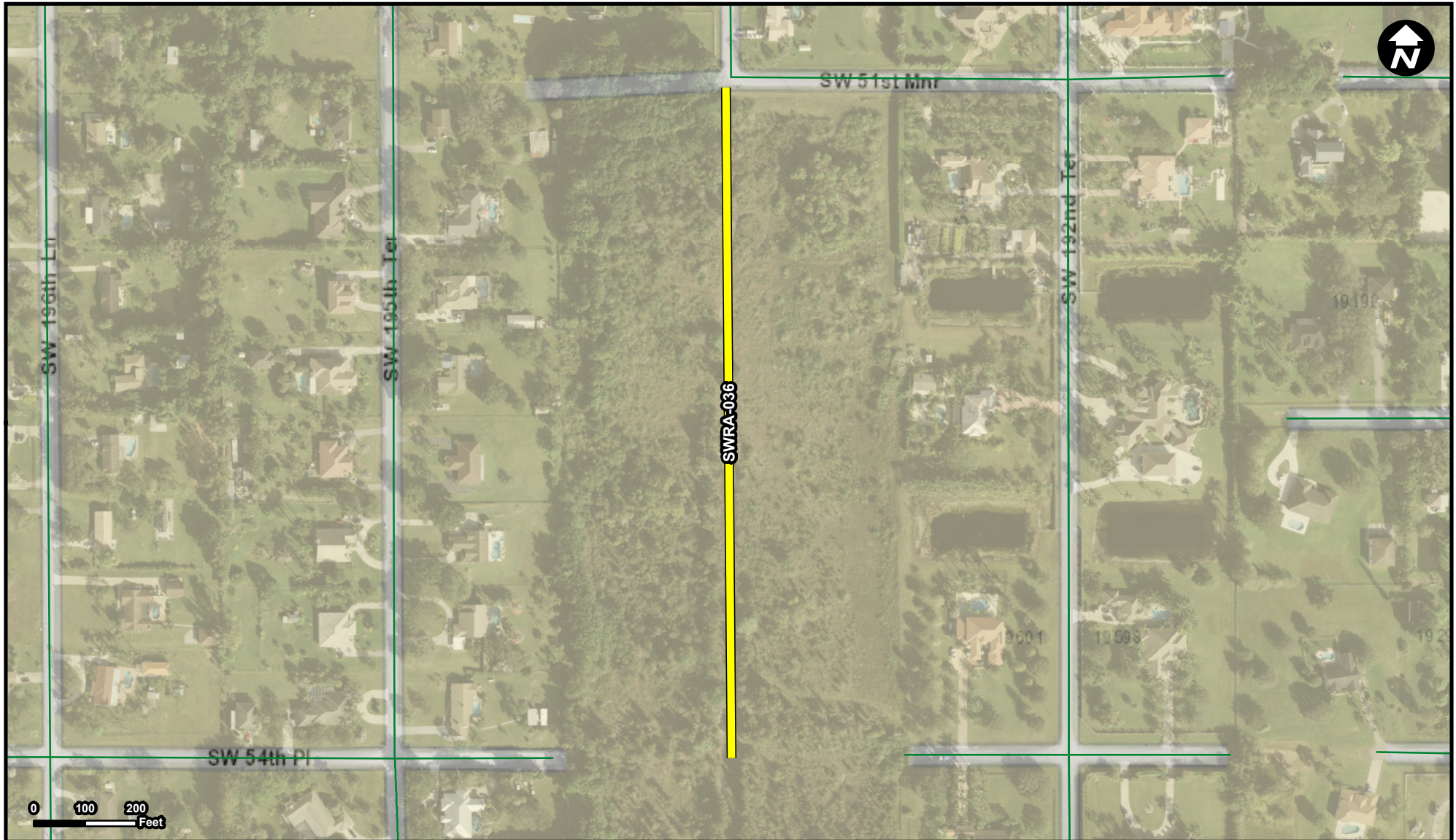
Resiliency Improvements

Safety Project

Install catch basins and drainage piping to adjacent canal.

The project consists of excavation, clearing, installation of approximately 300 linear feet of reinforced concrete (RCP) drainage pipe, installation of Florida Department of Transportation (FDOT) specified drainage inlets and a terminal headwall, associa

FROM:
To:



Legend

- SWRA-036
- Municipality
- Unincorporated

Suggested Work Mix:
Primary Work Mix:
Secondary Work Mix:

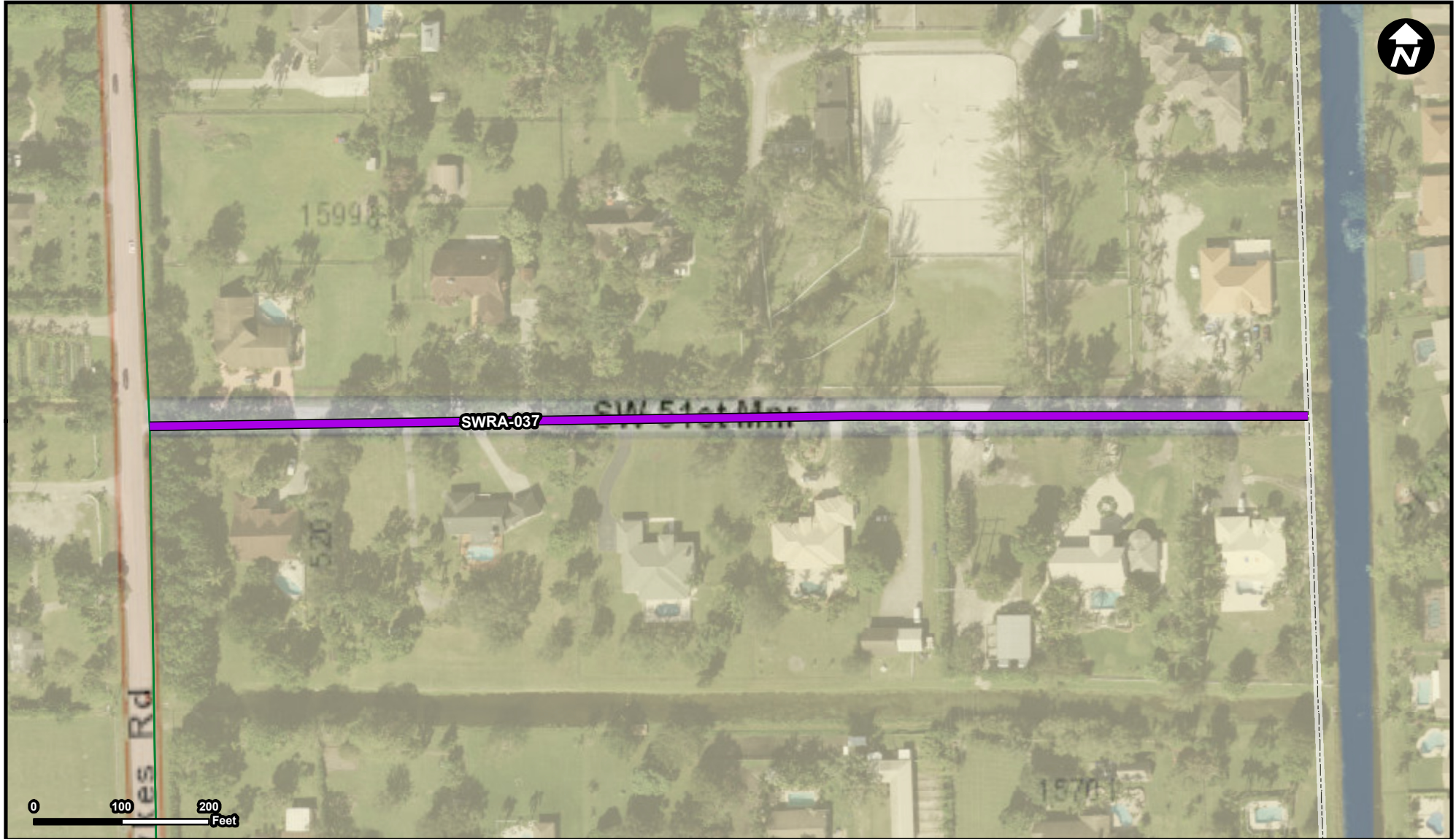
Resiliency Improvements
Safety Project

FROM:
To:

Project Description & Project Scope

Construct drainage conveyance system from SW 193rd Avenue to SW 54th Place

This scope of this project includes the installation of catch basins along SW 193rd Avenue and SW 51st Manor to remove stormwater from the respective roadways. Water will be directed southwest into the Frontier Trails Park, through drainage pipes and st



Legend

- SWRA-037
- Municipality
- Unincorporated

FROM: SW 51st Manor and neighboring residential properties
To: An existing stormwater facility to the east of SW 160th Avenue (Dykes Road).

Suggested Work Mix: Resiliency Improvements
Primary Work Mix: Safety Project
Secondary Work Mix:

Project Description & Project Scope

Install drainage structures and piping from Dykes Road east to canal

The project consists of excavation, clearing, installation of approximately 1,500 linear feet of reinforced concrete (RCP) drainage pipe, installation of Florida Department of Transportation (FDOT) specified drainage inlets and a terminal headwall, assoc