



Legend

- PPRK-002
- PPRK-003
- PPRK-010
- Municipality
- Unincorporated

Suggested Work Mix:
Primary Work Mix:
Secondary Work Mix:

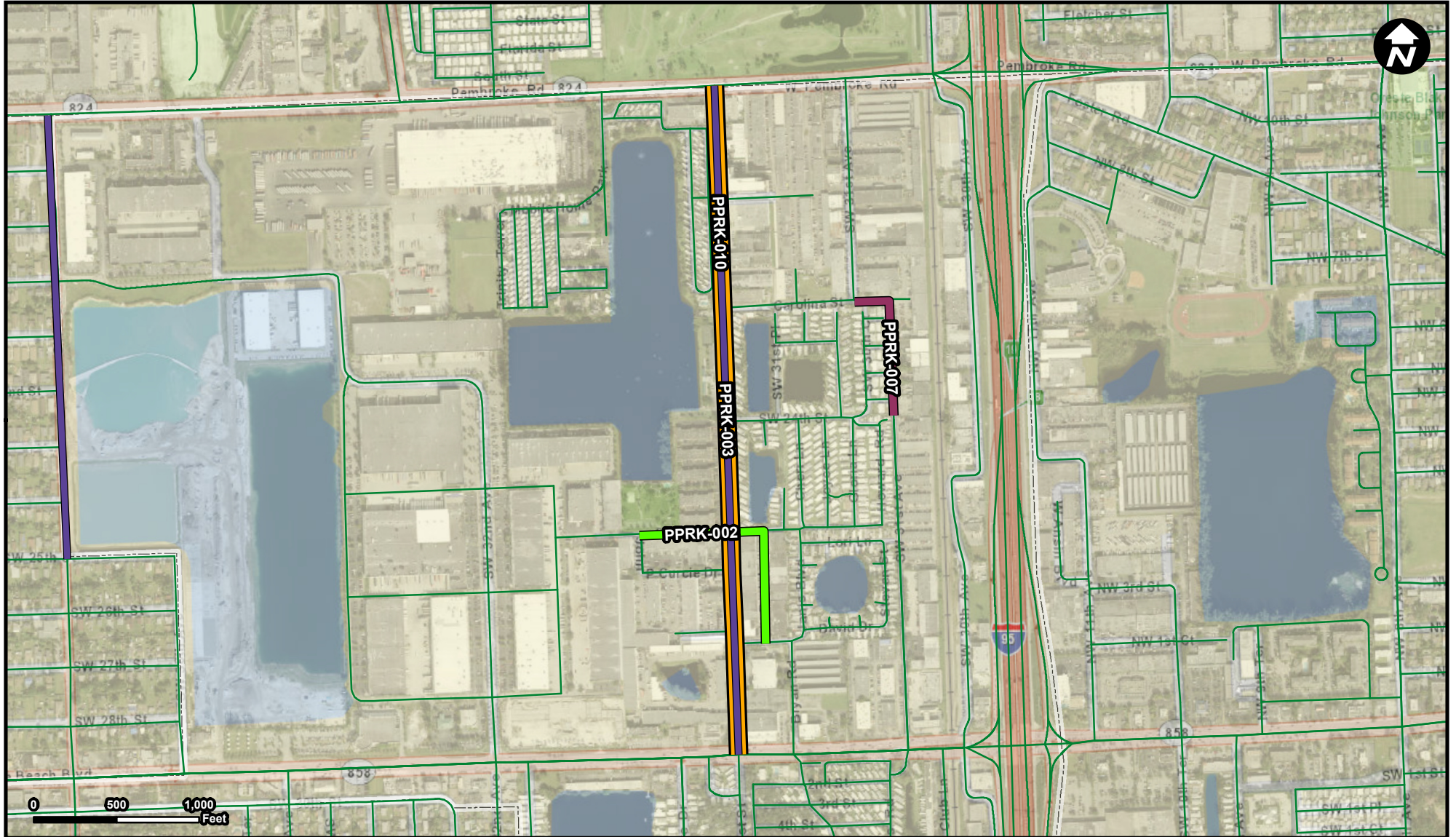
Resiliency Improvements

FROM:
To:

Project Description & Project Scope

Storm water improvements include drainage structures, storm water piping, an exfiltration water quality system, and a connection to Park Road's storm water system. These improvements are a rehabilitation and upsizing of an existing drainage system.

This is primarily a roadway drainage project adding drainage on Southwest 25th Street from 31st Place to Patrick Behan Park and into a new outfall into the lake. It also intercepts and picks up drainage on Park Road at 25th Street to reduce flooding. Se



Legend

- PPRK-002
- PPRK-003
- PPRK-007
- PPRK-010
- Municipality
- Unincorporated

Suggested Work Mix: Resiliency Improvements
Primary Work Mix:
Secondary Work Mix: Bike Lane Sidewalk

FROM: Hallandale Beach Boulevard
To: Pembroke Road

Project Description & Project Scope

Located in a commercial/residential area, extending from Hallandale Beach Boulevard north to Pembroke Road. The storm water improvements include drainage structures, an exfiltration drainage system, and regrading and paving of the road.



Legend

- PPRK-007
- Municipality
- Unincorporated

Suggested Work Mix: Resiliency Improvements

Primary Work Mix:

Secondary Work Mix:

Project Description & Project Scope

Phase II storm water improvements include drainage structures, an exfiltration water quality system, a storm water pumping station and force main, and regrading and paving of the street.

Add additional drainage and reconstruct roadway to repair damage from flooding.

FROM: 2400 John P. Lyons Lae
To: Carolina Street (SW 19th Street)



Legend

- PPRK-008
- PPRK-010
- WPRK-009
- Municipality
- Unincorporated

Suggested Work Mix:

Primary Work Mix:

Secondary Work Mix:

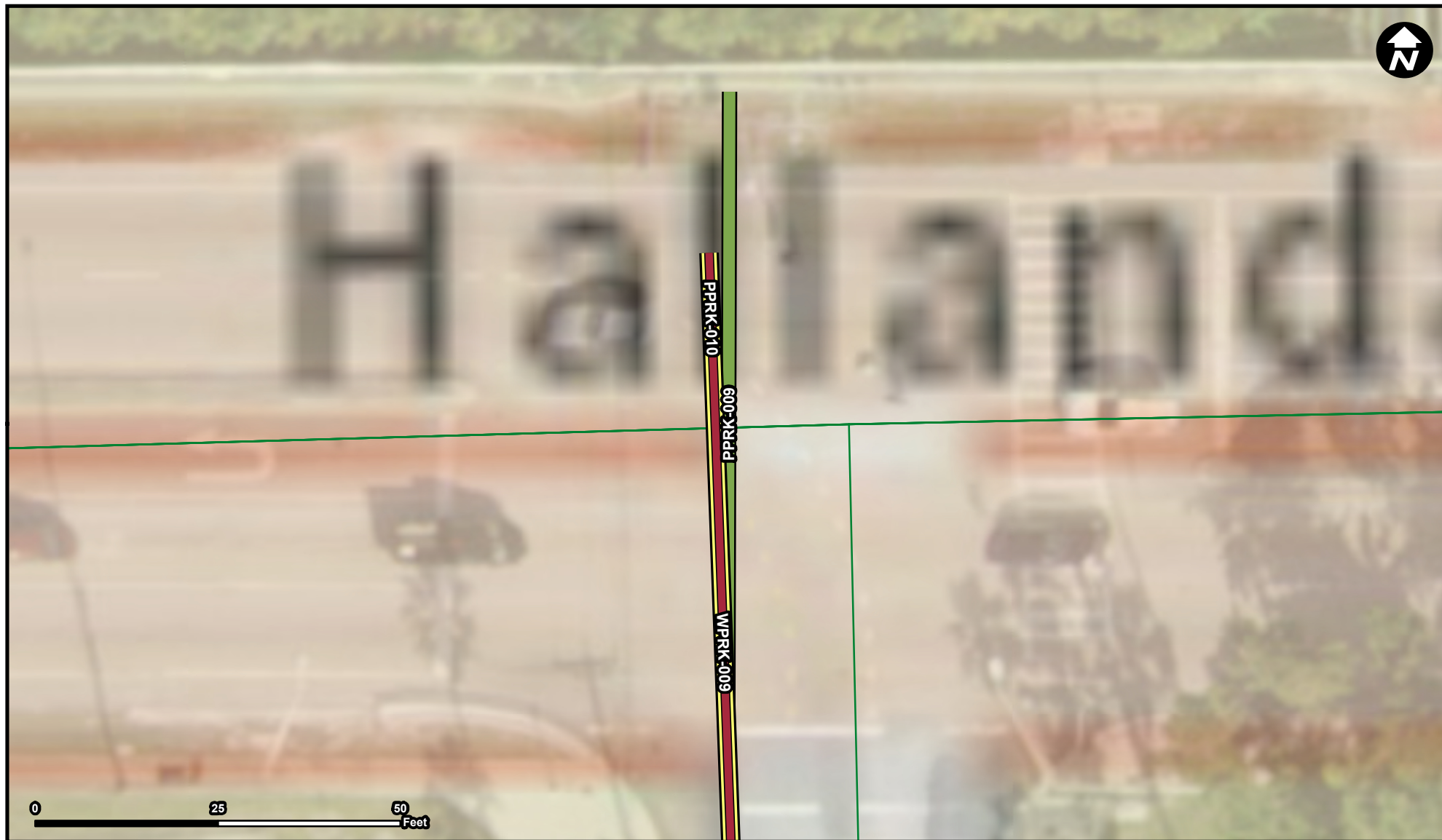
Project Description & Project Scope

FROM: Intersection of SW52nd Avenue on County Line Rd
TO: Intersection of SW 56th Avenue on County Line Rd

Sidewalk

Storm water improvements includes the construction of storm water piping between S.W. 52nd Avenue and S.W. 56th Avenue, which will convey storm water west to discharge into the Broward County storm water system.

Install Drainage line from existing storm water system at 52nd Avenue along County Line Road to an existing outfall at 56th Avenue. Tie in any drainage along the North side of County Line Road.



Legend

- PPRK-009
- PPRK-010
- WPRK-009
- Municipality
- Unincorporated

FROM: 20 ft North of Hallandale Beach Blvd at SW 52nd Avenue
To: Storm catch Basin 50 feet South of Hallandale Beach Blvd.

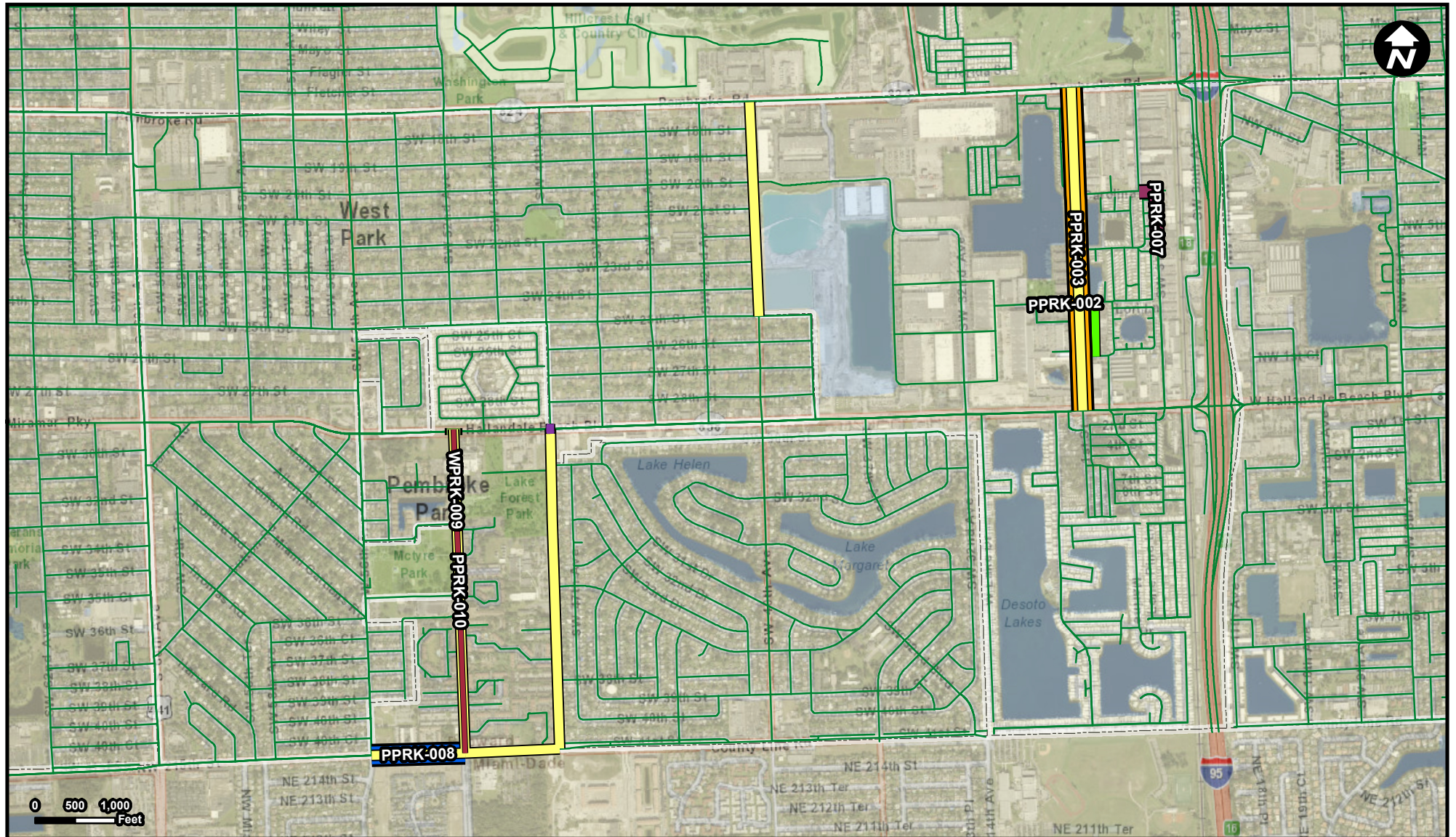
Suggested Work Mix: Resiliency Improvements

Primary Work Mix:
Secondary Work Mix:

Project Description & Project Scope

Located at S.W. 52nd Avenue/Hallandale Beach Boulevard. Construction would include a point of connection for Dale Village FCOs private storm water collection system.

Install Drainage Connection to correct street flooding on SW 28th Street, SW 27th Street, SW 28th Ct and SW 27th Court. The Connection is to the SW 52nd Avenue drainage which is to connect to an outfall on SW 56th Avenue and County Line Rd.



Legend

- PPRK-002
- PPRK-003
- PPRK-007
- PPRK-008
- PPRK-009
- PPRK-010
- PPRK-011
- Municipality
- Unincorporated
- WPRK-009

Suggested Work Mix:
Primary Work Mix:
Secondary Work Mix:

Bicycle Pedestrian Infrastructure
Bike Lane Sidewalk
Signing/Pavement

Project Description & Project Scope

Complete the missing sections of sidewalk and bike paths along S.W. 52nd Avenue, S.W. 48th Avenue, S.W. 40th Avenue, Park Road and County Line Road.

FROM:
To:



Legend

- PPRK-010
- PPRK-011
- Municipality
- Unincorporated

Suggested Work Mix:
Primary Work Mix:
Secondary Work Mix:

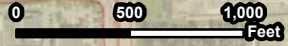
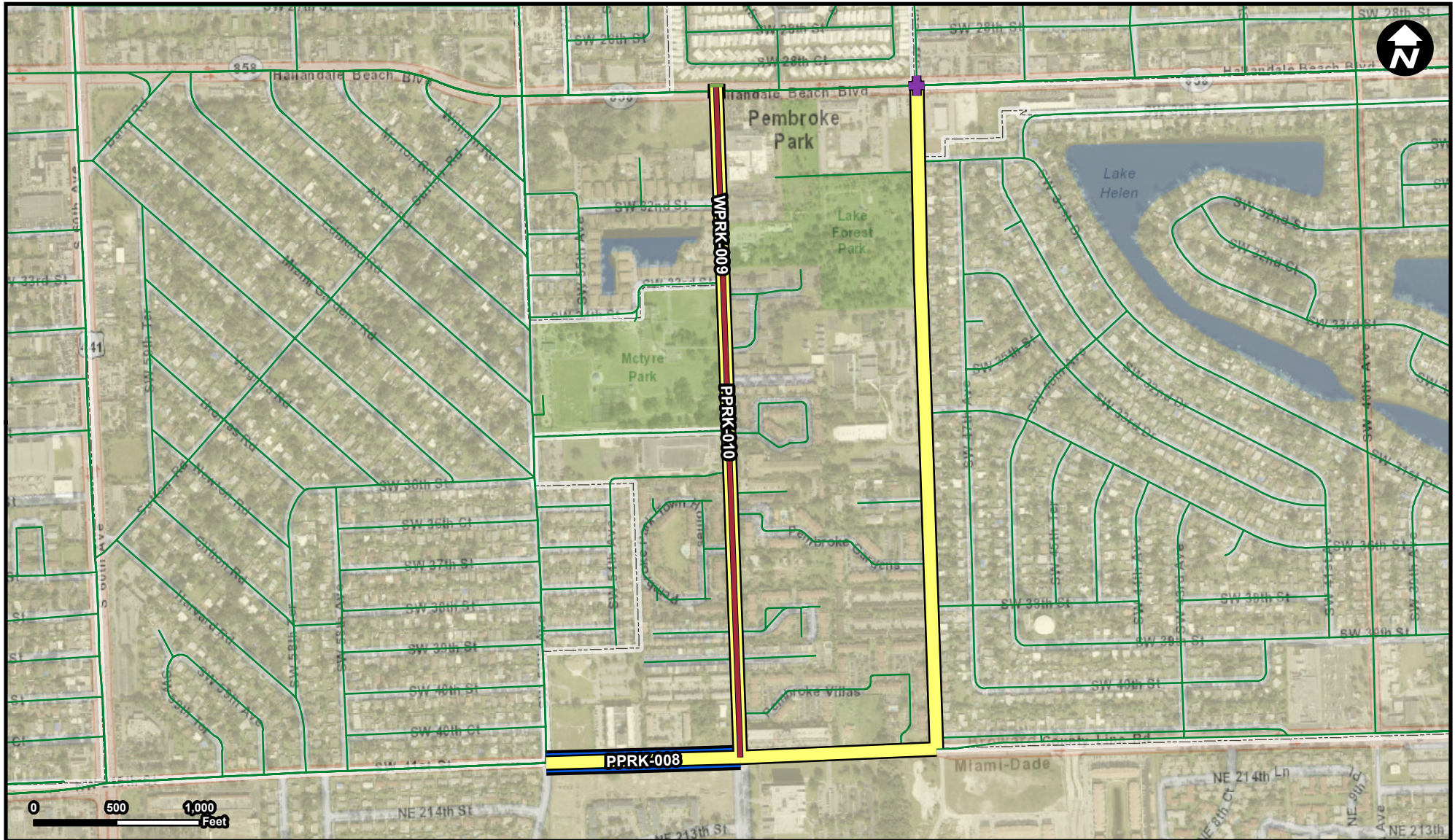
Signal Enhancement
Traffic Signals
Safety Project

FROM:
To:

Project Description & Project Scope

Install Mast-Arm signals at the intersection along with improved pedestrian and turn signal lights to improve public safety

Upgrade intersection with Mast Arms and additional improvements to Pedestrian Crossing and Turn signals.



- Legend**
- PPRK-008
 - PPRK-009
 - PPRK-010
 - PPRK-011
 - WPRK-009
 - Municipality
 - Unincorporated

Suggested Work Mix: Bicycle Pedestrian Infrastructure
Primary Work Mix:
Secondary Work Mix:

Project Description & Project Scope

Extent? Would include Pembroke Park. 1.5 miles of complete street improvement to include, bike lanes; improved sidewalks with complete connectivity; adjustment to drainage system; roadway resurfacing, streetlights, pavement marking and landscaping

FROM:
To: