

Legend

- PARK-002
- PARK-006
- PARK-008
- PARK-016
- Municipality
- Unincorporated

Suggested Work Mix:
Primary Work Mix:
Secondary Work Mix:

Project Description & Project Scope

Bicycle Pedestrian Infrastructure
Bike Lane Sidewalk
Add Lanes





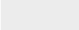
City funding for roadway improvements including sidewalk, bike lanes and medians.

Reconstruct existing 2-lane undivided/ roadway to provide a divided 2-lane roadway with median, bike lanes and sidewalks for the entire corridor (approx. 1.7 miles).

FROM: SR-7
To: approx. 2300 feet west of Parkside Drive.



Legend

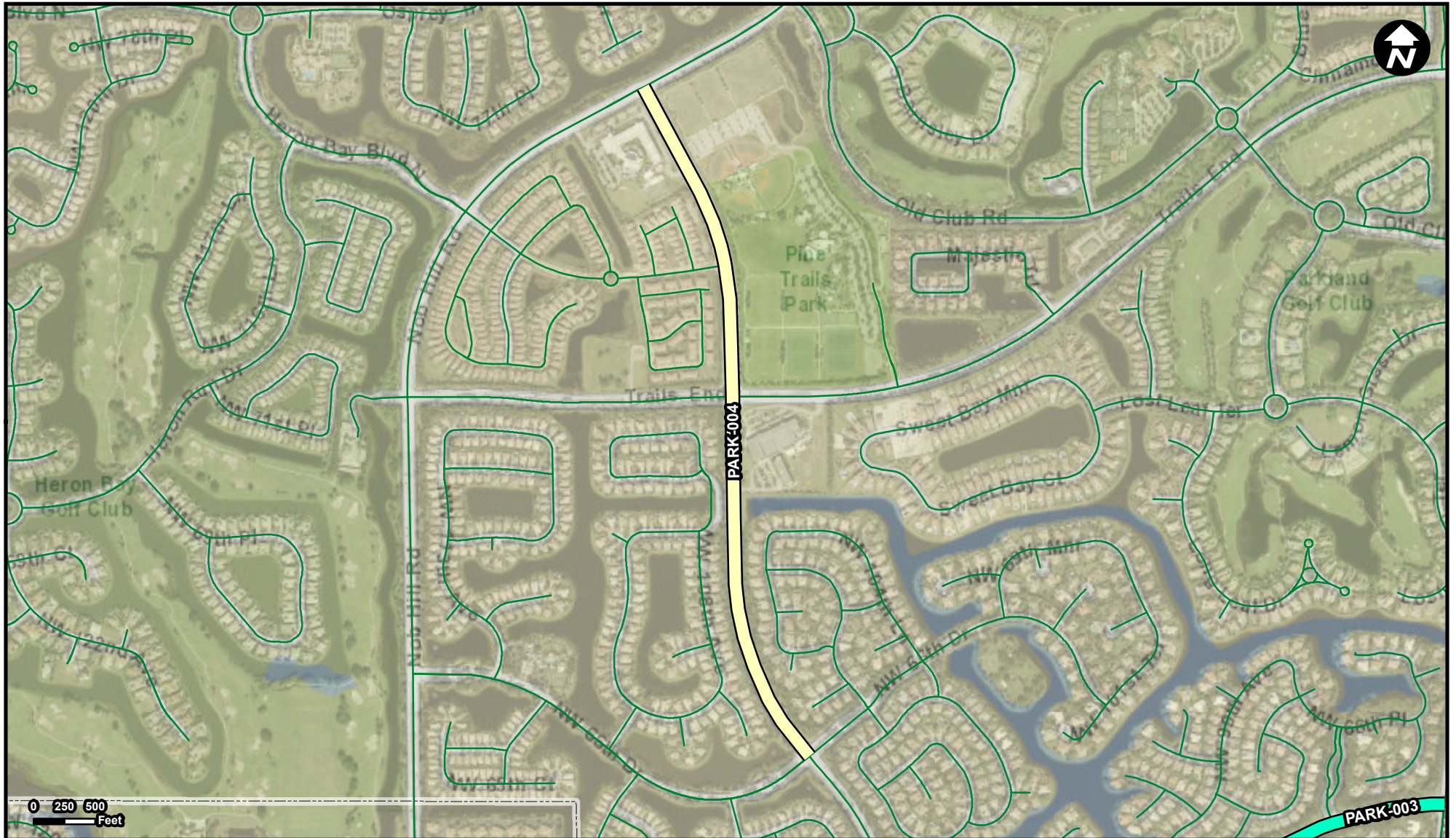
-  PARK-003
-  PARK-010
-  PARK-016
-  Municipality
-  Unincorporated

Suggested Work Mix: Lighting
Primary Work Mix: Lighting
Secondary Work Mix:

Project Description & Project Scope

Construction of streetlighting on Hillsboro Boulevard (University Drive to western City limits).
Install new concrete poles with LED lights and infrastructure to provide roadway lighting (approx. 2.5 miles).

FROM: University Drive
To: Western Limits of the road



Legend

- PARK-003
- PARK-004
- PARK-016
- Municipality
- Unincorporated

FROM: NW 66th Drive
To: Nob Hill Road

Suggested Work Mix: Lighting
Primary Work Mix: Lighting
Secondary Work Mix:



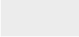
Project Description & Project Scope

Construction of streetlighting on Pine Island Road (NW 66th to Nob Hill Road).

Install new concrete poles with LED lights and infrastructure to provide roadway lighting (approx. 1 mile)



Legend

-  PARK-005
-  Municipality
-  Unincorporated

Suggested Work Mix:
Primary Work Mix:
Secondary Work Mix:

Project Description & Project Scope

Signal Enhancement
Traffic Signals
Signing/Pavement

Installation of a traffic light (signal) at the intersection of Hillsboro Boulevard and Nob Hill Road.

Installation of a new traffic signal system (4 mast arms) and related pavement marking and signage at an exiting 4-way stop intersection.

FROM:
To:



Legend

- PARK-002
- PARK-006
- PARK-008
- Municipality
- Unincorporated

Suggested Work Mix:
Primary Work Mix:
Secondary Work Mix:

Project Description & Project Scope

Signal Enhancement
Traffic Signals
Signing/Pavement


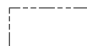

Installation of a traffic light (signal) at the intersection of Parkside Drive and Lox Road.

Installation of a traffic signal system at existing one-way stop intersection. Improvement is being replaced with a roundabout at this location as part of the Lox Road project - PARK 005.

FROM:
To:



Legend

-  PARK-007
-  Municipality
-  Unincorporated

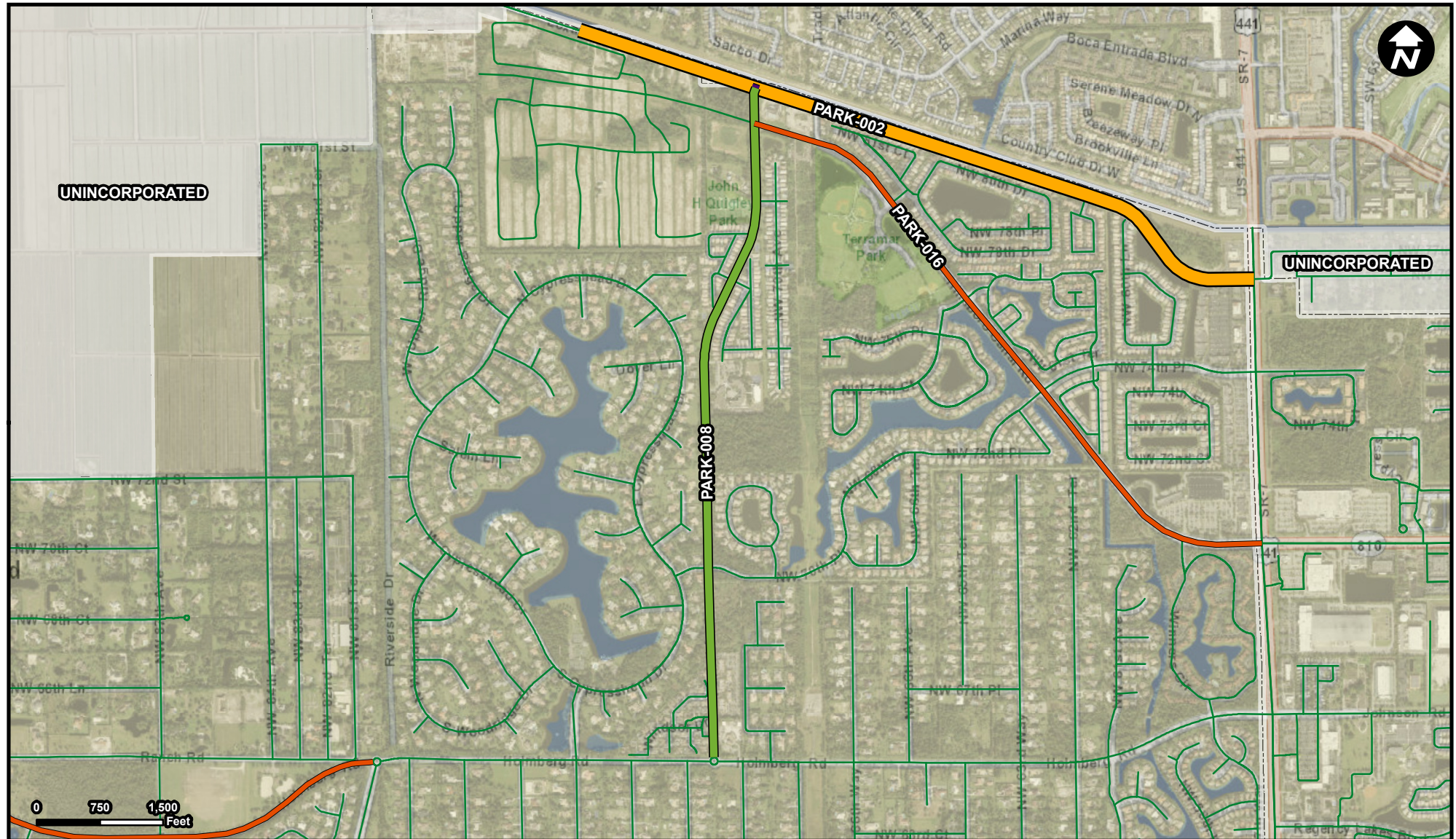
Suggested Work Mix:
Primary Work Mix:
Secondary Work Mix:

Project Description & Project Scope

Signal Enhancement
Traffic Signals
Signing/Pavement

Installation of a traffic light (signal) at the intersection of Hillsboro Boulevard and University Drive.
Installation of a new traffic signal system at an existing 3-way stop intersection.

FROM:
To:



Legend

- PARK-002
- PARK-006
- PARK-008
- PARK-016
- Municipality
- Unincorporated

Suggested Work Mix:

Primary Work Mix:

Secondary Work Mix:

Project Description & Project Scope

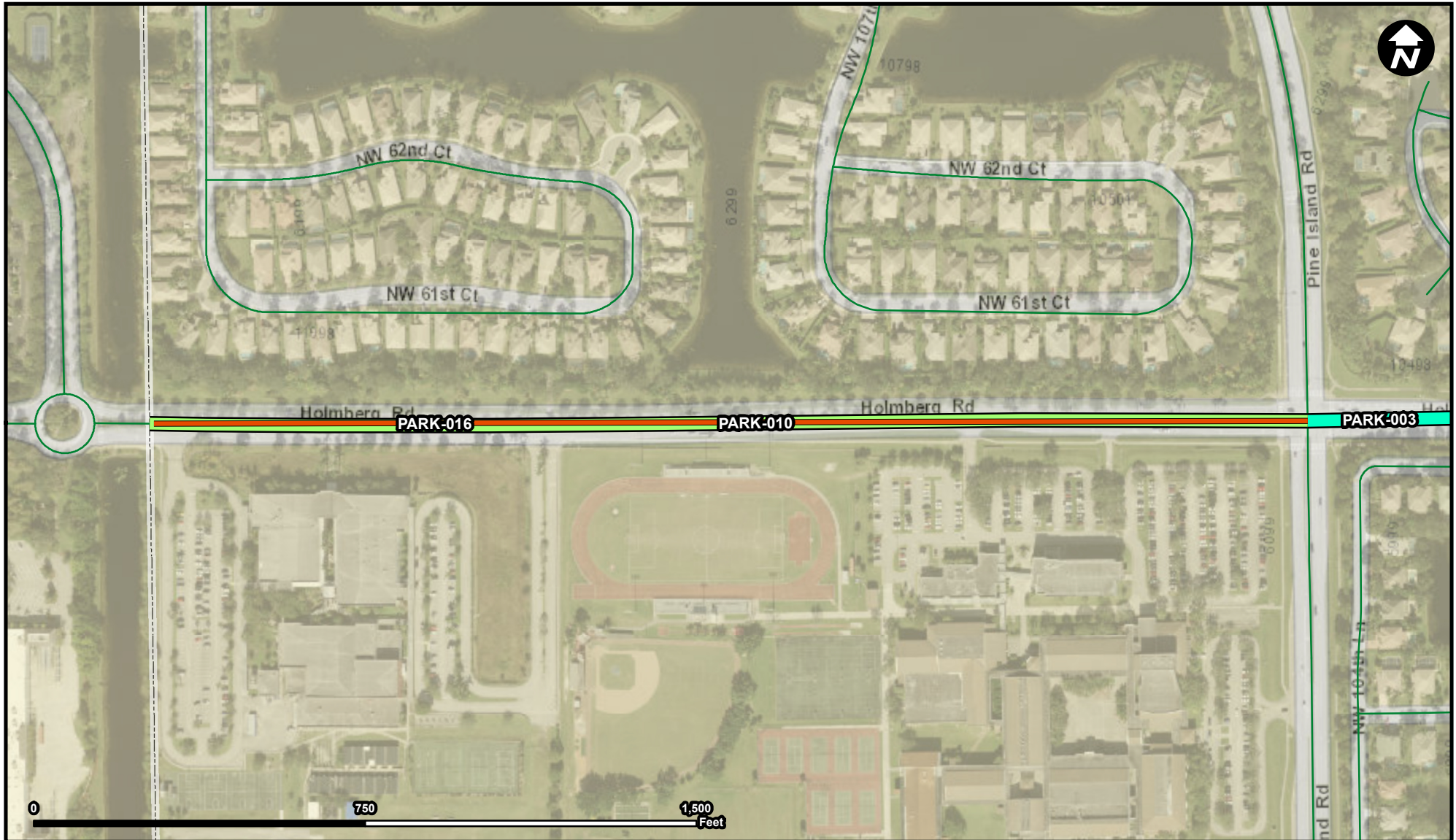
Bicycle Pedestrian Infrastructure

Bike Lane Sidewalk

Construction of bike lanes on Parkside Drive between Lox Road and Holmberg Road.

Install new bike lanes along Parkside Drive inclusive of pavement widening for bike lanes and extension of existing right and left turn lanes into Riverglades Elementary school, and associated drainage and pavement marking and signage. (approx. 1.5 miles)

FROM: Holmberg Road
To: Loxahatchee Road



Legend

- PARK-003
- PARK-010
- PARK-016
- Municipality
- Unincorporated

FROM: Pine Island Road
To: Western limits of the City

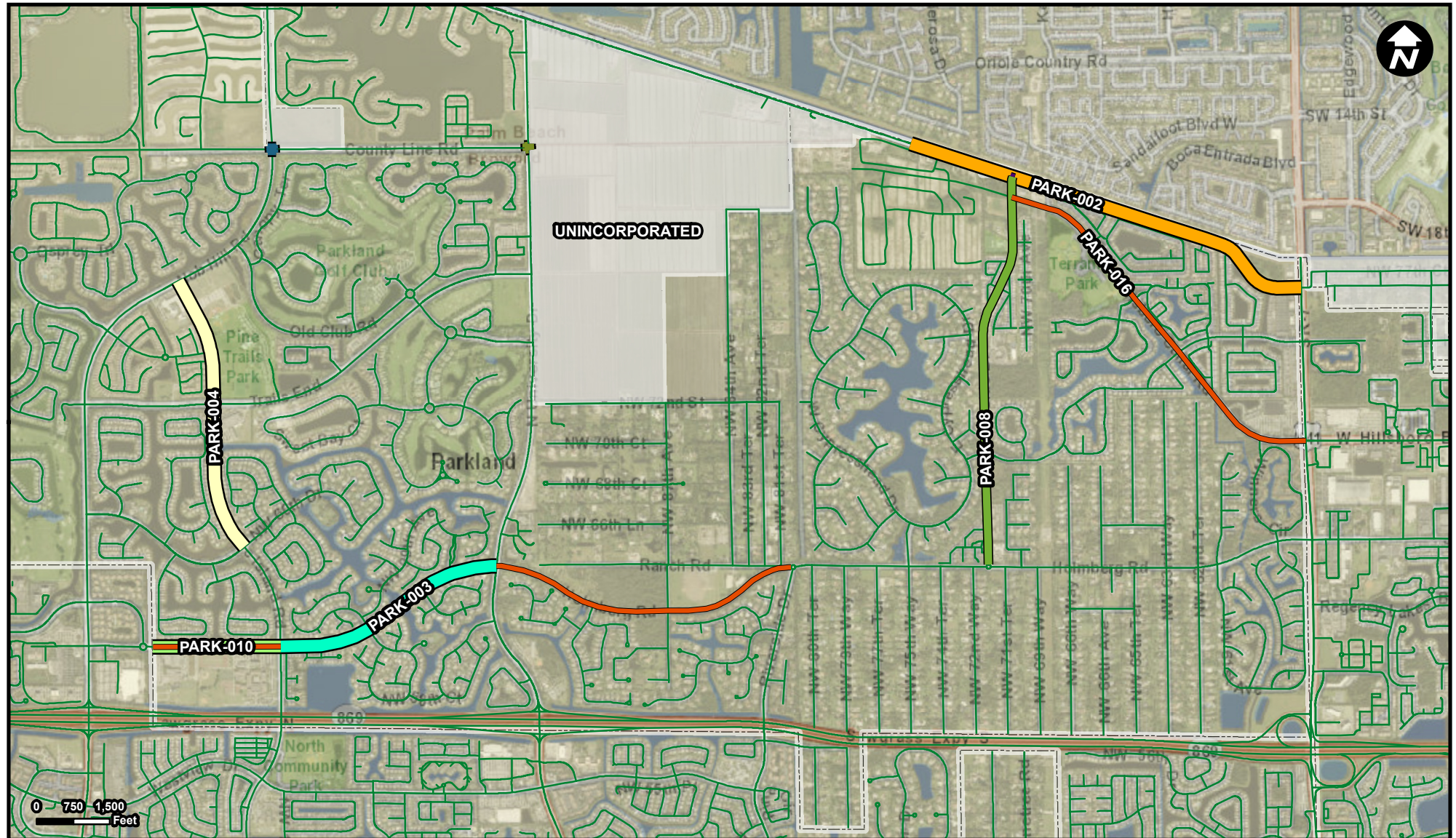
Suggested Work Mix: Bicycle Pedestrian Infrastructure
Primary Work Mix: Bike Lane Sidewalk
Secondary Work Mix:

Project Description & Project Scope

Construction of bike lanes on Holmberg Road between Pine Island Road and the western City limits.

Construction of new bike lanes along Holmberg Road inclusive of pavement widening, 600' right turn lane (into Marjory Stoneman Douglas High school), associated drainage and pavement marking and signage (approx. 0.5 miles)

PARK-016



Legend

- PARK-002
- PARK-003
- PARK-004
- PARK-005
- PARK-006
- PARK-007
- PARK-008
- PARK-010
- PARK-016
- Municipality
- Unincorporated

FROM: SR-7
To: Loxahatchee Road - needs to change to Parkside Drive in coordination with Hillsboro Blvd extension improvements.

Suggested Work Mix: Lighting
Primary Work Mix: Lighting
Secondary Work Mix:

Project Description & Project Scope

Installation of streetlighting on Hillsboro Blvd., from SR7 to Lox Road and Holmberg (Riverside to University & Pine Island to City limits).
Install new concrete poles with LED lights and infrastructure to provide roadway lighting (approx. 1.5 miles)