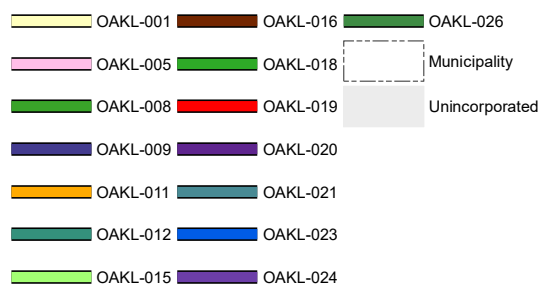


## Legend



### Suggested Work Mix:

**Primary Work Mix:**

**Secondary Work Mix:**

**Bicycle Pedestrian Infrastructure**

**Bike Lane Sidewalk**

**Safety Project**

### **Project Description & Project Scope**

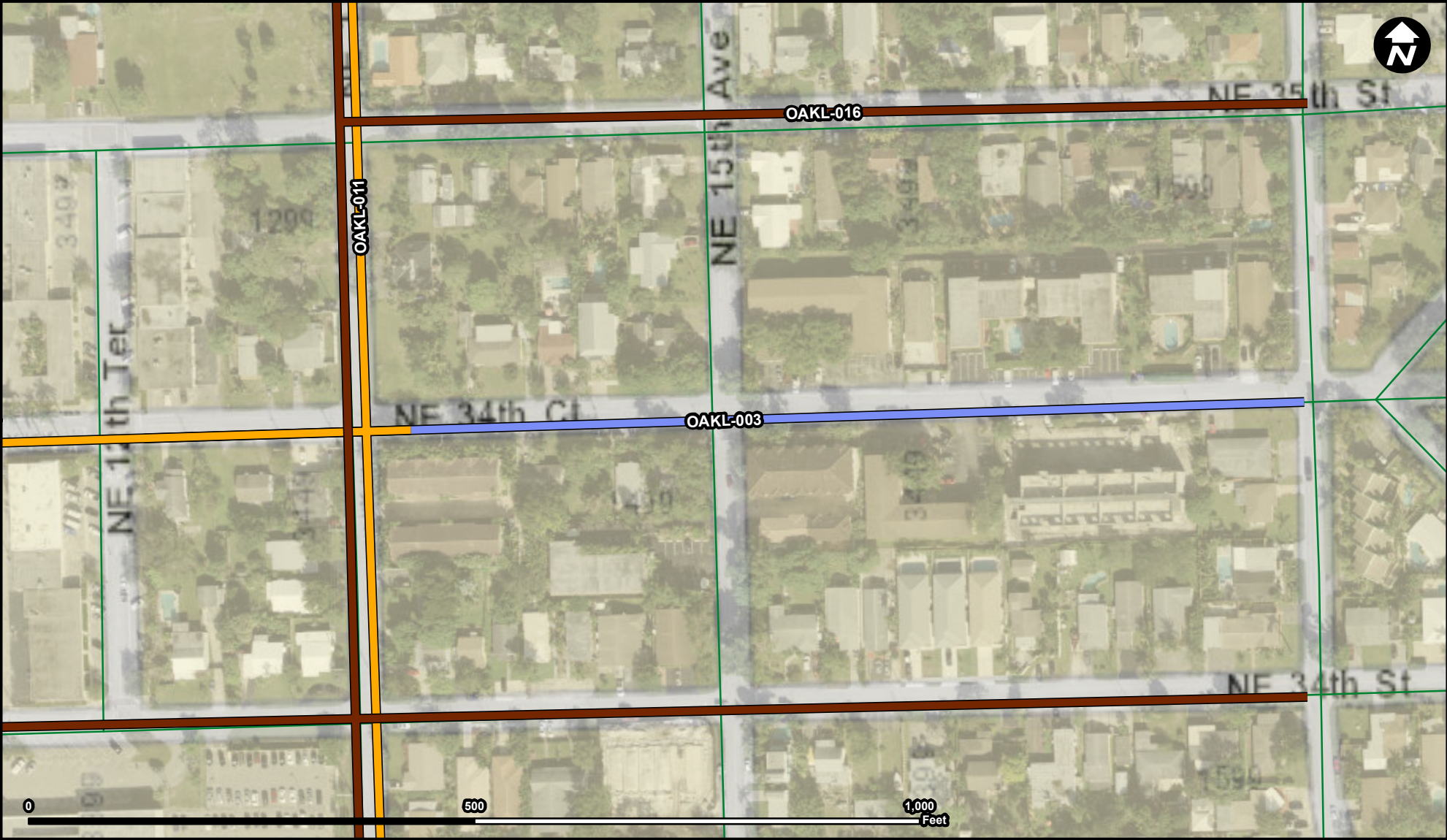
Prospect Road Enhancement, Complete Street improvement on Prospect Rd. including on-street parking, dedicated solid green bike lanes, sidewalks and landscaping.

Prospect Road Enhancement, Complete Street improvement on Prospect Rd. including on-street parking, dedicated solid green bike lanes, sidewalks and landscaping.

Source: Broward Municipal Surtax Projects - BMPO; ESRI Basemap

**FROM:** Commercial Highway  
**To:** Dixie Highway





Legend

- OAKL-003
- OAKL-011
- OAKL-016
- Municipality
- Unincorporated

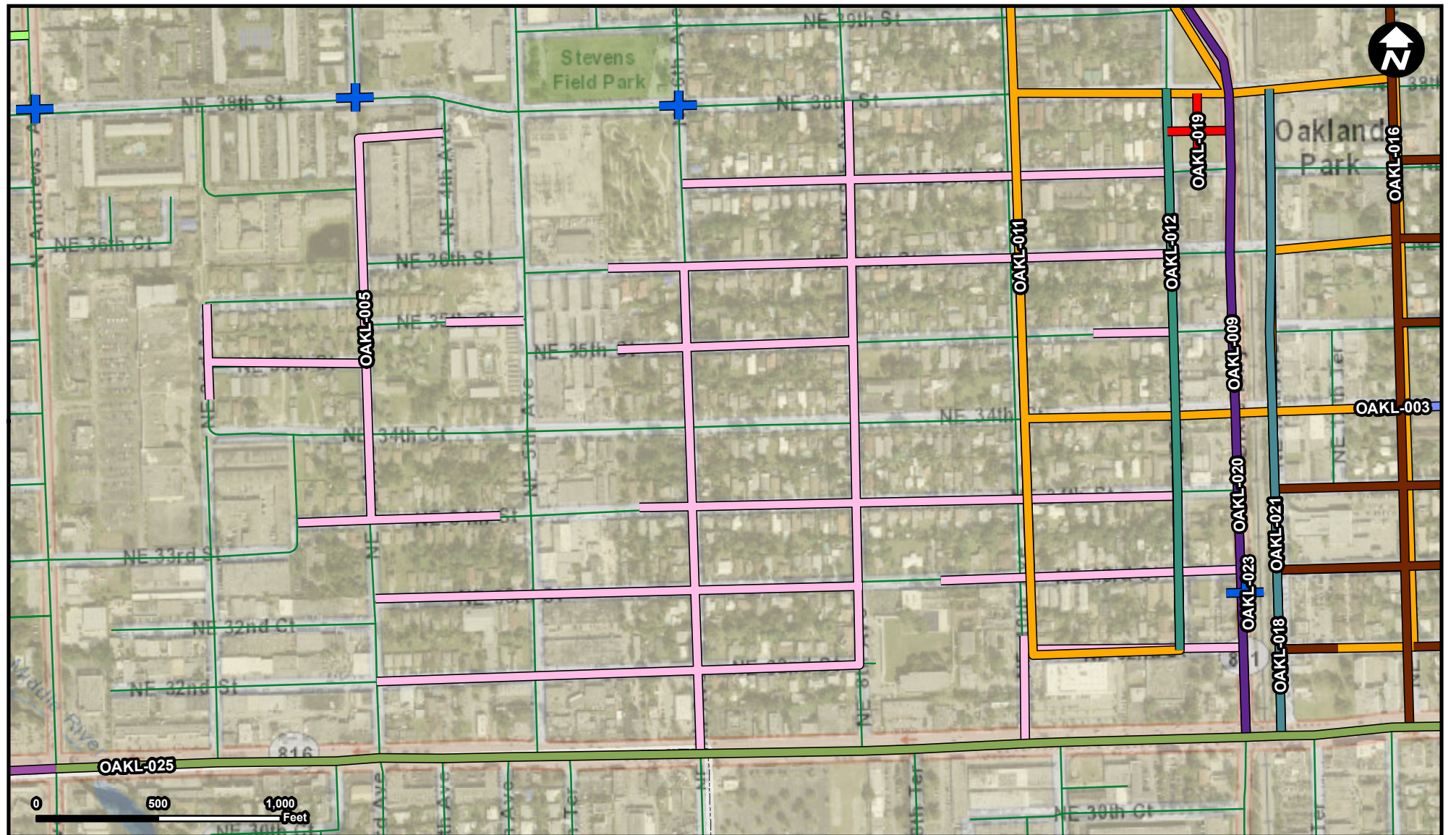
**Suggested Work Mix:** Bicycle Pedestrian Infrastructure  
**Primary Work Mix:** Bike Lane Sidewalk  
**Secondary Work Mix:** Safety Project

**Project Description & Project Scope**  
NE 34 Ct from NE 12 Terrace to NE 16 Avenue, Roadway enhancement including 4' solid green bike lanes, sidewalks, lighting, possible landscaping and other aesthetic improvements.  
NE 34 Ct from NE 12 Terrace to NE 16 Avenue, Roadway enhancement including 4' solid green bike lanes, sidewalks, lighting, possible landscaping and other aesthetic improvements.






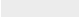










Source: Broward Municipal Surtax Projects - BMPO; ESRI Basemap

**FROM:** NE 12 Terrace  
**To:** NE 16 Avenue,





## Legend

	OAKL-003		OAKL-016		Municipality
	OAKL-005		OAKL-018		Unincorporated
	OAKL-009		OAKL-019		
	OAKL-010		OAKL-020		
	OAKL-011		OAKL-021		
	OAKL-012		OAKL-023		
	OAKL-015		OAKL-025		

**Suggested Work Mix:**  
**Primary Work Mix:**  
**Secondary Work Mix:**

**Bicycle Pedestrian Infrastructure**  
**Bike Lane Sidewalk**  
**Safety Project**

## Project Description & Project Scope

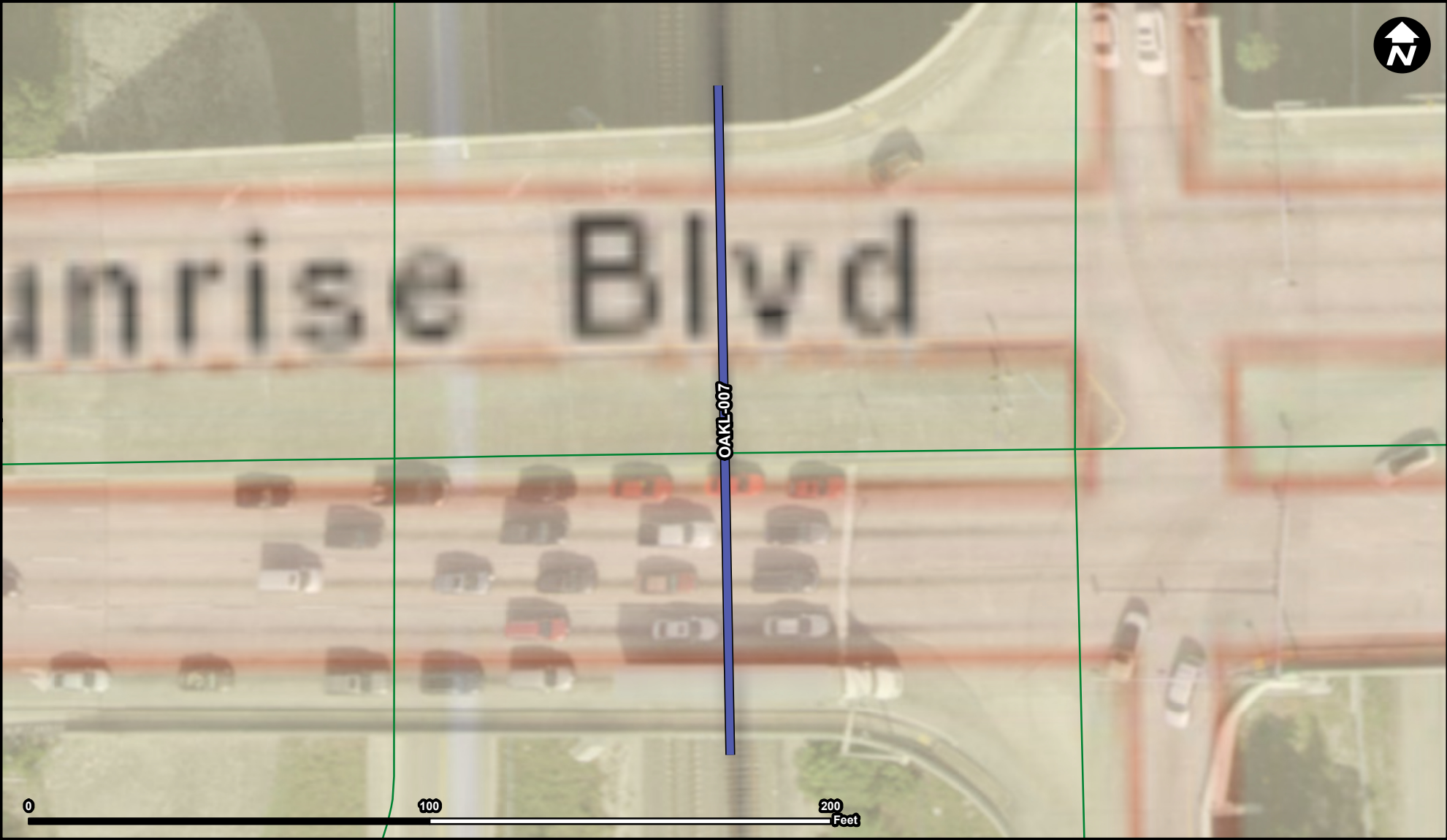
Infill of sidewalks around Oakland Park Elementary School. From Oakland Park Blvd. north to NE 38th Street (Park Lane) and from NE 2nd Avenue east to Dixie Highway.

Project includes the installation of sidewalks and the installation of necessary drainage elements deemed necessary as a result of the sidewalk improvements. Project also includes the relocation of existing

Source: Broward Municipal Surtax Projects - BMPO; ESRI Basemap

FROM:  
To:





Legend

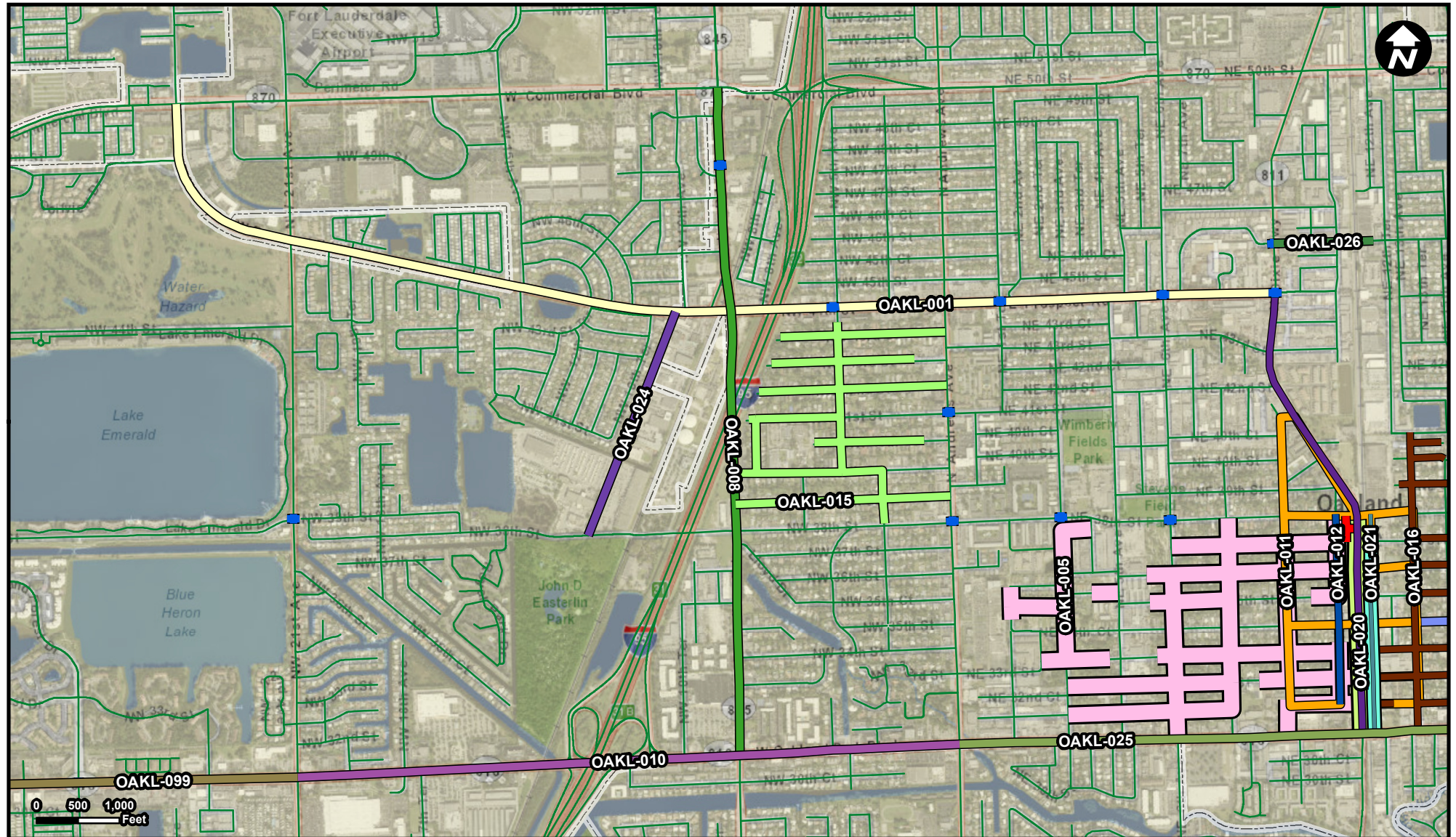
- OAKL-007
- Municipality
- Unincorporated

**Suggested Work Mix:** Bicycle Pedestrian Infrastructure  
**Primary Work Mix:** Safety Project  
**Secondary Work Mix:**

**Project Description & Project Scope**  
Study to provide recommendations for safety improvements to the CSX and FEC railway crossings.  
Study to provide recommendations for safety improvements to the CSX and FEC railway crossings.

FROM:  
To:





## Legend

OAKL-001	OAKL-012	OAKL-023
OAKL-003	OAKL-015	OAKL-024
OAKL-005	OAKL-016	OAKL-025
OAKL-008	OAKL-018	OAKL-026
OAKL-009	OAKL-019	OAKL-029
OAKL-010	OAKL-020	Municipality
OAKL-011	OAKL-021	Unincorporated

**Suggested Work Mix:**  
**Primary Work Mix:**  
**Secondary Work Mix:**

**Bicycle Pedestrian Infrastructure**  
**Safety Project**  
**Bike Lane Sidewalk**

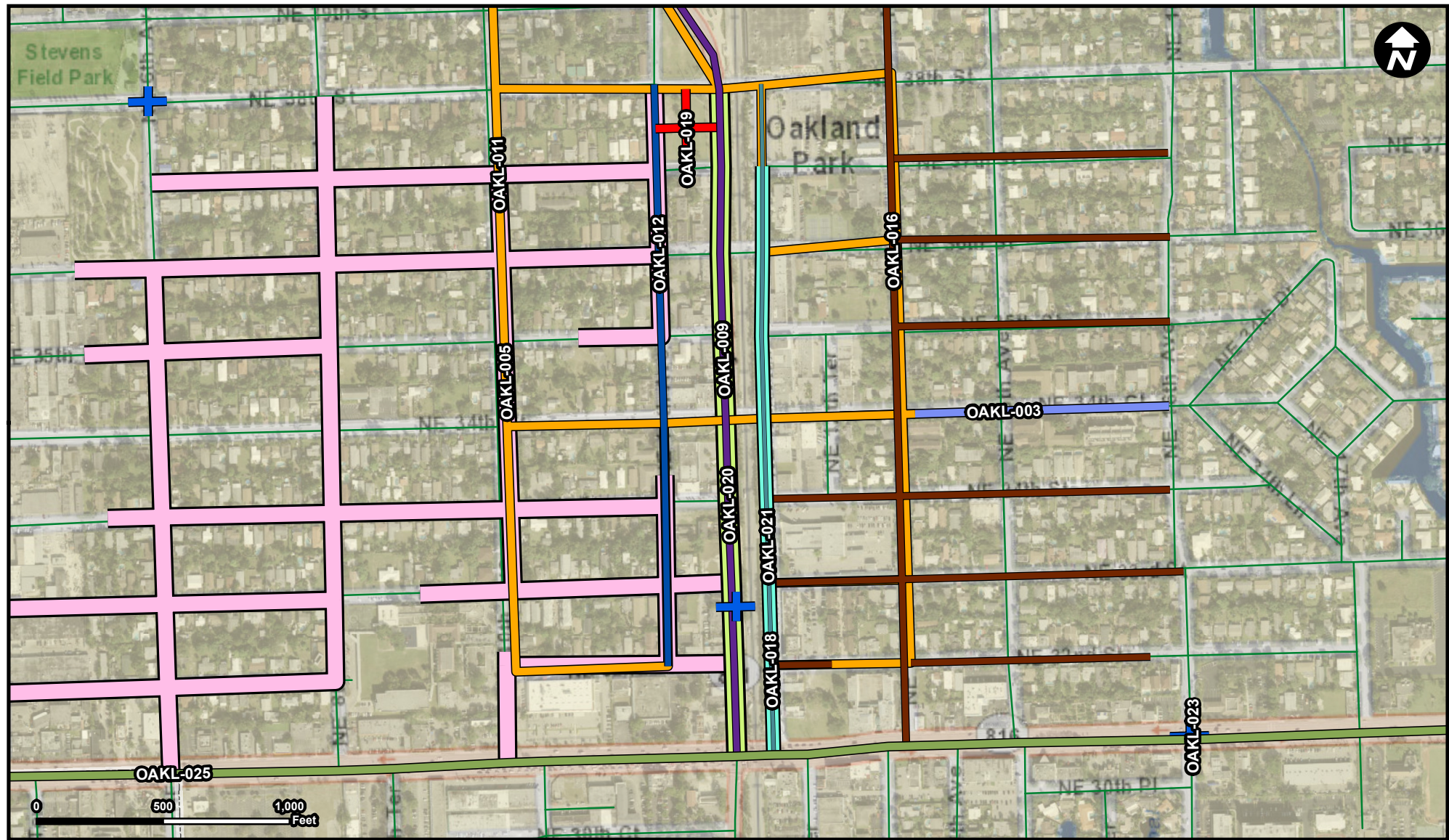
**Project Description & Project Scope**

Powerline Rd, Road diet and addition of bike lanes and landscaping on Powerline Rd from Oakland Park Blvd to Commercial Blvd.

Powerline Rd, Road diet and addition of bike lanes and landscaping on Powerline Rd from Oakland Park Blvd to Commercial Blvd.

**FROM:** Oakland Park Blvd  
**To:** Commercial Blvd.





Legend

- |          |                |
|----------|----------------|
| OAKL-003 | OAKL-019       |
| OAKL-005 | OAKL-020       |
| OAKL-009 | OAKL-021       |
| OAKL-011 | OAKL-023       |
| OAKL-012 | OAKL-025       |
| OAKL-016 | Municipality   |
| OAKL-018 | Unincorporated |

**Suggested Work Mix:** Landscaping, Hardscape, Signage  
**Primary Work Mix:** Landscaping  
**Secondary Work Mix:**

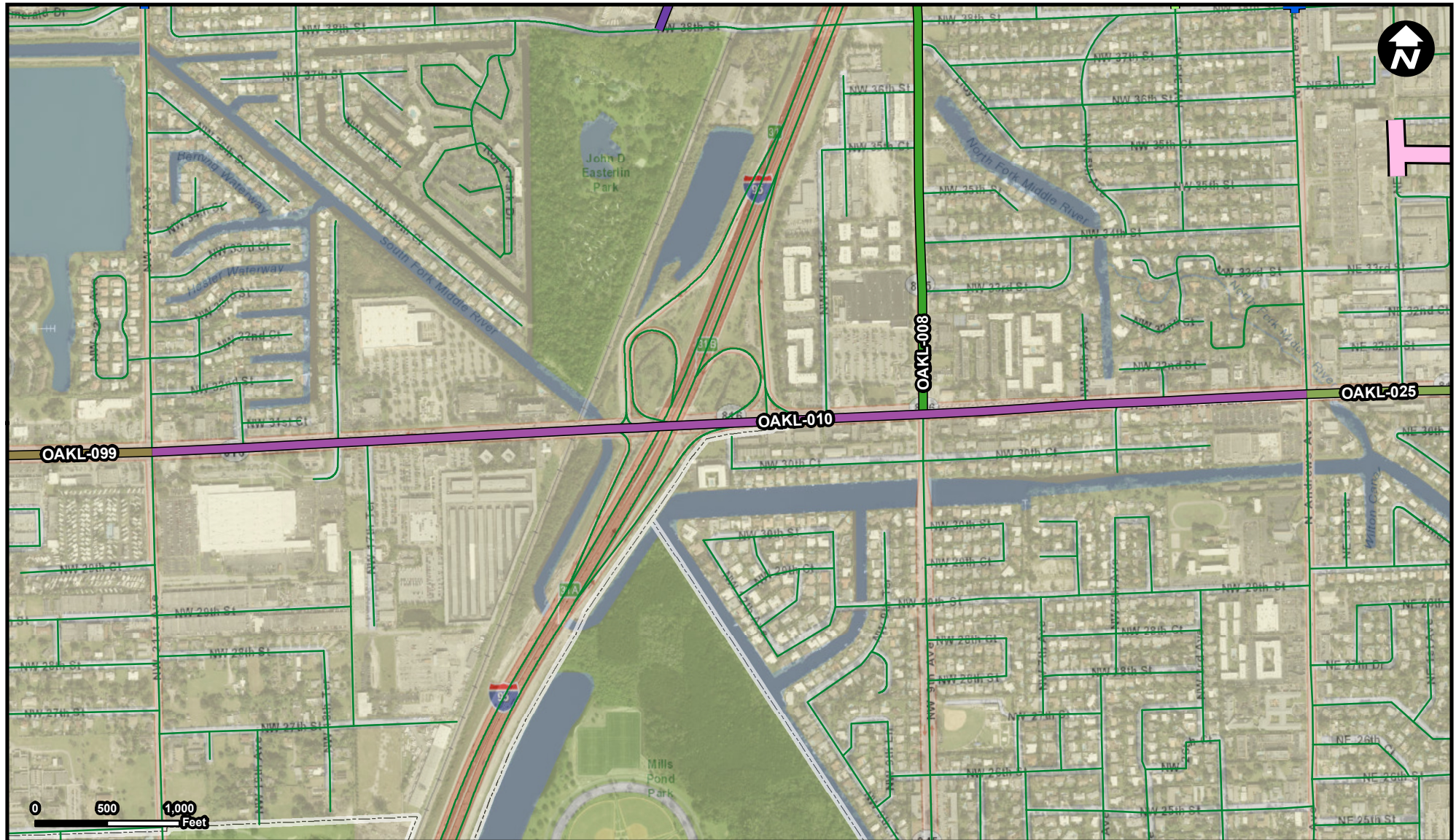
**Project Description & Project Scope**  
Dixie Highway Landscape Improvements Landscape improvement on Dixie Highway between Oakland Park Blvd and Park Lane East.  
Dixie Highway Landscape Improvements Landscape improvement on Dixie Highway between Oakland Park Blvd and Park Lane East.

**FROM:** Oakland Park Blvd  
**To:** Park Lane East

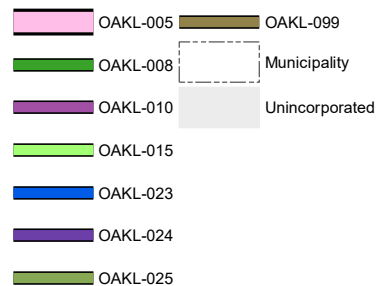


# OAKL-010

**Project Name**  
Oakland Park Blvd Corridor Improvement



### Legend



**Suggested Work Mix:**

**Primary Work Mix:**

**Secondary Work Mix:**

## Project Description & Project Scope

## Signal Enhancement

TSM&amp;O

## Safety Project

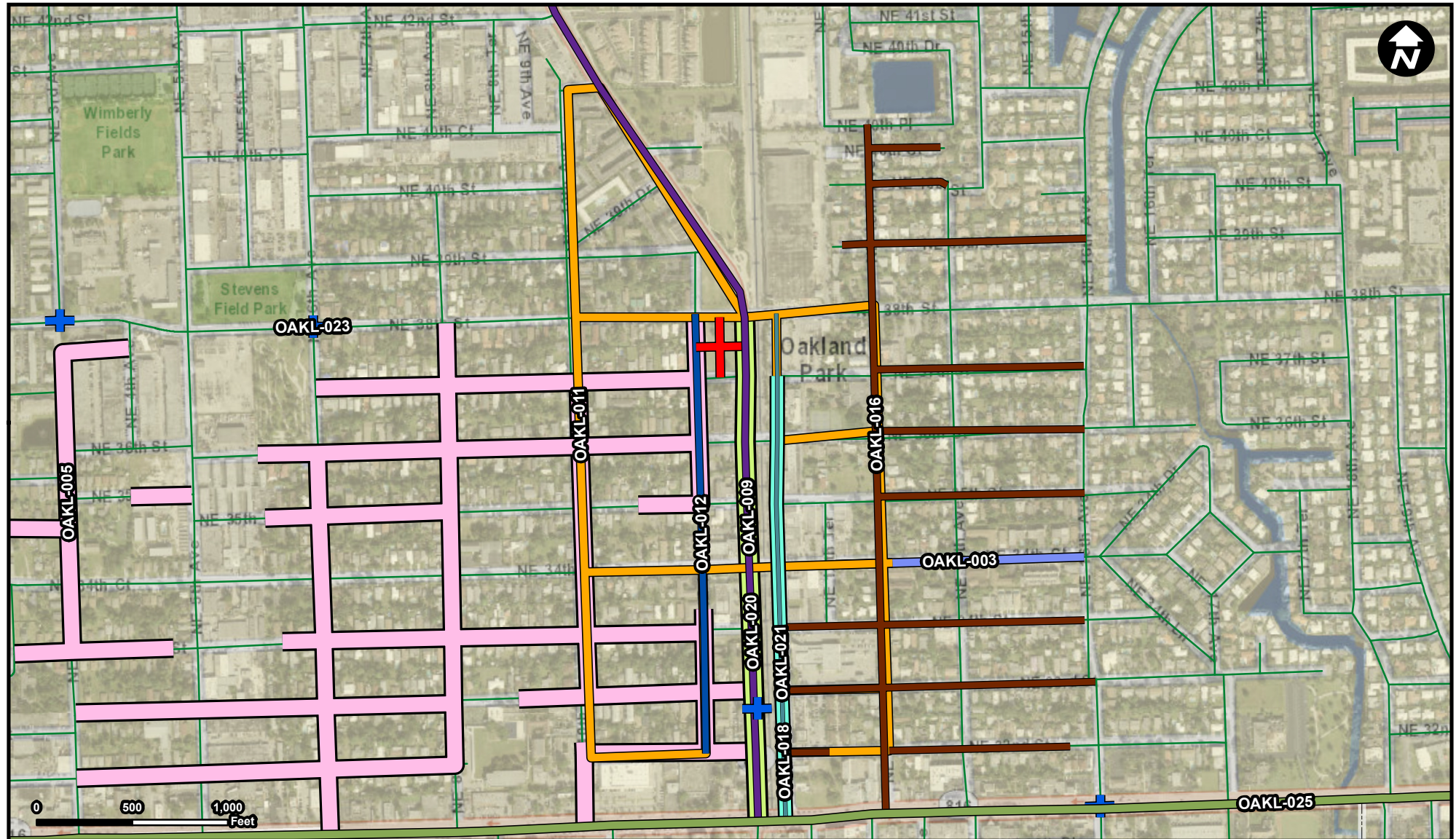
Oakland Park Blvd & I95, from NW 21st Ave to Andrews Ave. Corridor improvements include signal synchronization, improved turning movements and pedestrian facilities, to name a few elements, needed to help alleviate traffic congestion

Improvements include signal synchronization, improved turning movements and pedestrian facilities, to name a few elements.

**FROM:** NW 21st Ave  
**To:** Andrews Ave

Source: Broward Municipal Surtax Projects - BMPO; ESRI Basemap





## Legend

	OAKL-003		OAKL-019
	OAKL-005		OAKL-020
	OAKL-009		OAKL-021
	OAKL-011		OAKL-023
	OAKL-012		OAKL-025
	OAKL-016		Municipality
	OAKL-018		Unincorporated

## Suggested Work Mix:

Primary Work Mix:

Secondary Work Mix:

## Transit Routing

TSM&O

Transit Improvement

## Project Description & Project Scope

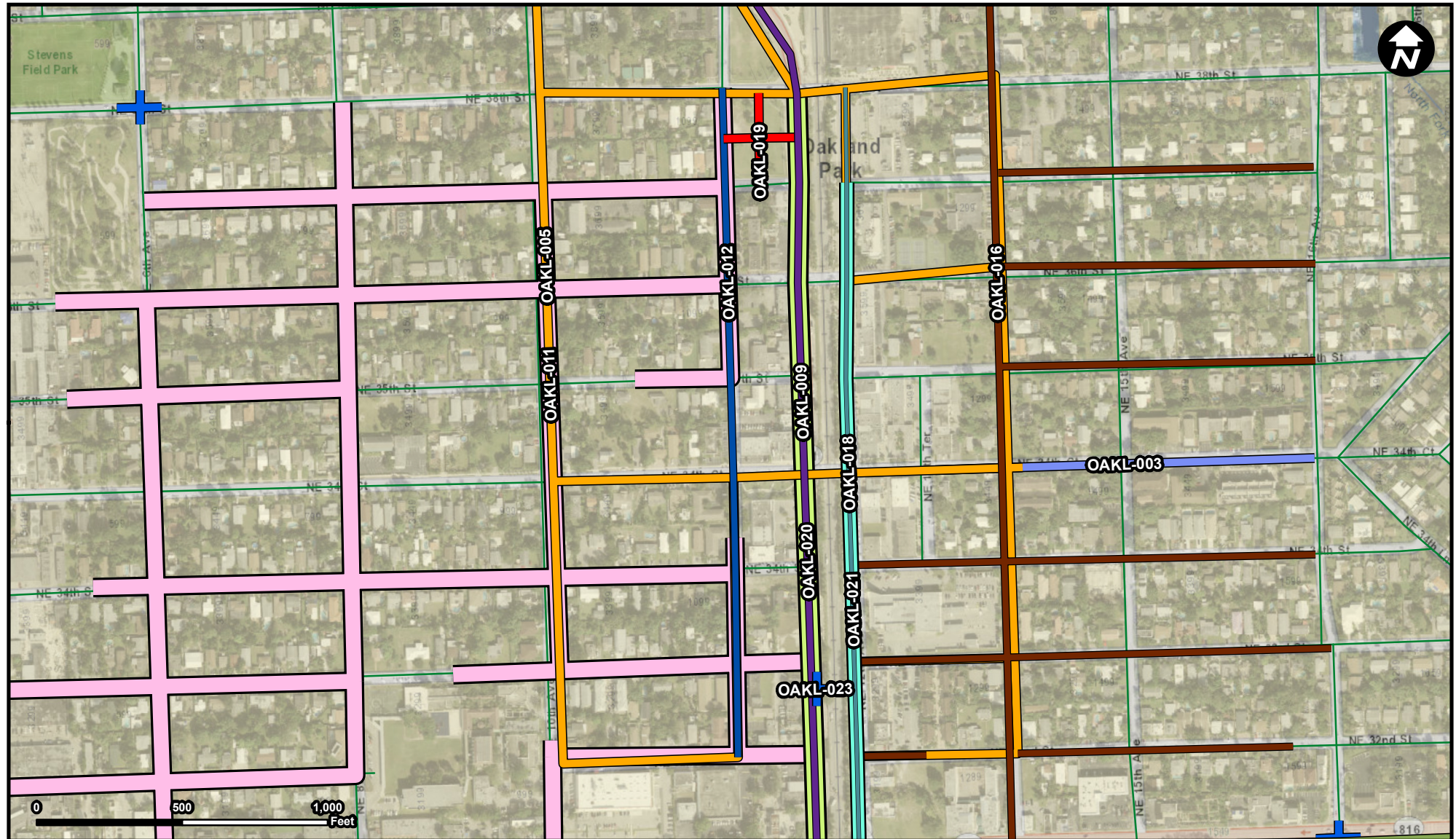
Oakland Park Down Town to Tri-Rail Station Implement a downtown circulator with connections to the Tri-Rail Station and the future Coastal Link Railway

Oakland Park Down Town to Tri-Rail Station Implement a downtown community shuttle with connections to the Tri-Rail Station and the future Coastal Link Railway. Creates connectivity to existing and future mass

Source: Broward Municipal Surtax Projects - BMPO; ESRI Basemap

FROM:  
To:

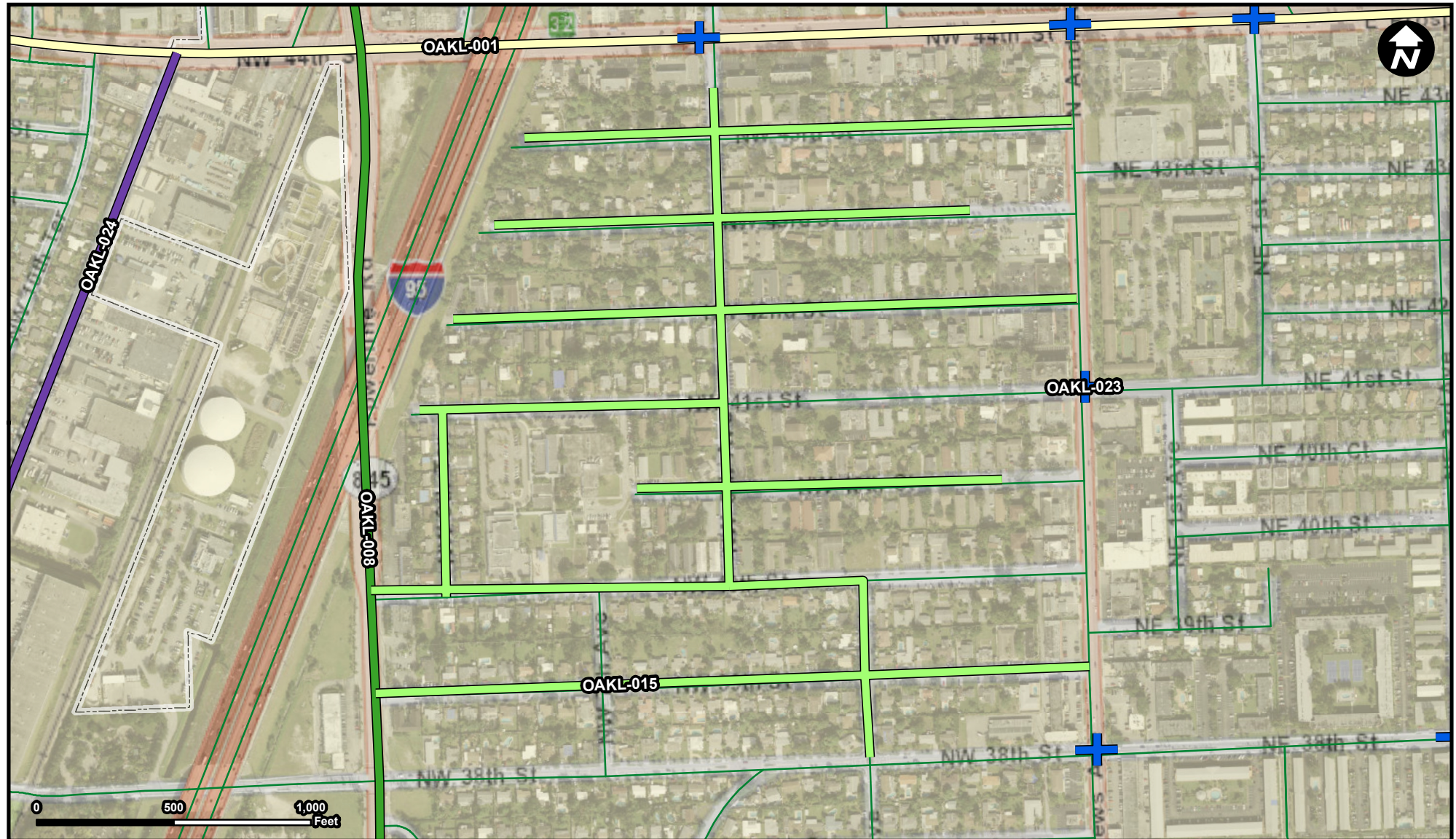






# OAKL-015

Project Name  
Lloyd Estates Elementary School Safe Routes



## Legend

- OAKL-001
- OAKL-008
- OAKL-015
- OAKL-023
- OAKL-024
- Municipality
- Unincorporated

**Suggested Work Mix:**  
**Primary Work Mix:**  
**Secondary Work Mix:**

**Bicycle Pedestrian Infrastructure**  
**Bike Lane Sidewalk**  
**Safety Project**

**Project Description & Project Scope**

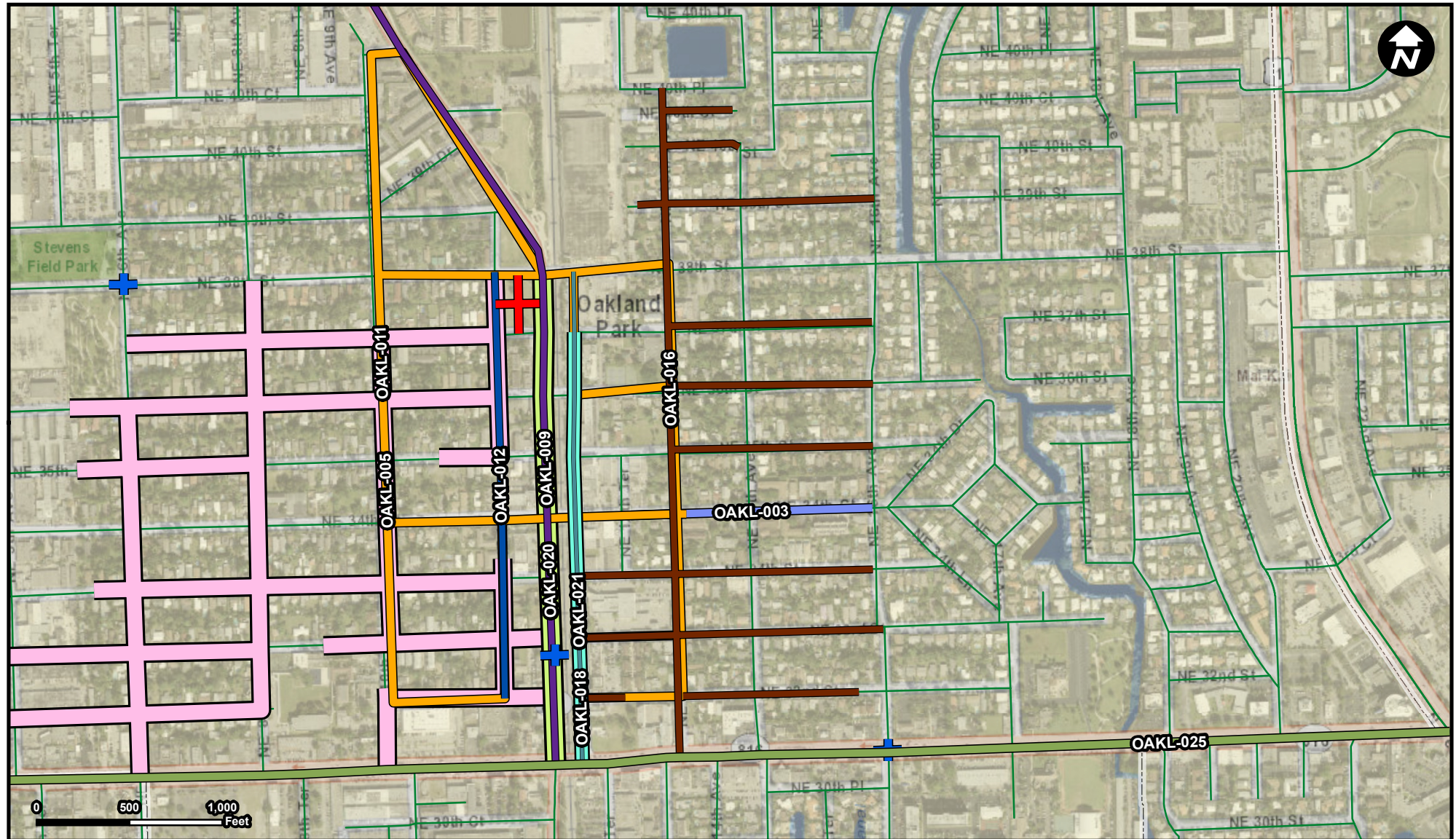
Continuous sidewalk system to Lloyd Estates Elementary School. Project boundaries are from Powerline Rd. east to Andrews Avenue and from NW 38th Street north to NW 44th Street.

The proposed project will provide a continuous sidewalk system to Lloyd Estates Elementary School. Install/replace an estimated 14,750 linear feet of 5'  $\phi$  sidewalk. Install ADA ramps, crosswalks, curbs and gutter














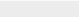
Source: Broward Municipal Surtax Projects - BMPO; ESRI Basemap

FROM:  
To:





## Legend

	OAKL-003		OAKL-019
	OAKL-005		OAKL-020
	OAKL-009		OAKL-021
	OAKL-011		OAKL-023
	OAKL-012		OAKL-025
	OAKL-016		Municipality
	OAKL-018		Unincorporated

### Suggested Work Mix:

Primary Work Mix:

Secondary Work Mix:

Bicycle Pedestrian Infrastructure

Bike Lane Sidewalk

Safety Project

### Project Description & Project Scope

Installation of shared used path on NE 13th Avenue from Oakland Park Boulevard and sidewalks on side street connecting Main Street to 16th Avenue.

Installation of shared used path on NE 13th Avenue from Oakland Park Boulevard and sidewalks on side street connecting Main Street to 16th Avenue. Project will include the installation of drainage as required due to

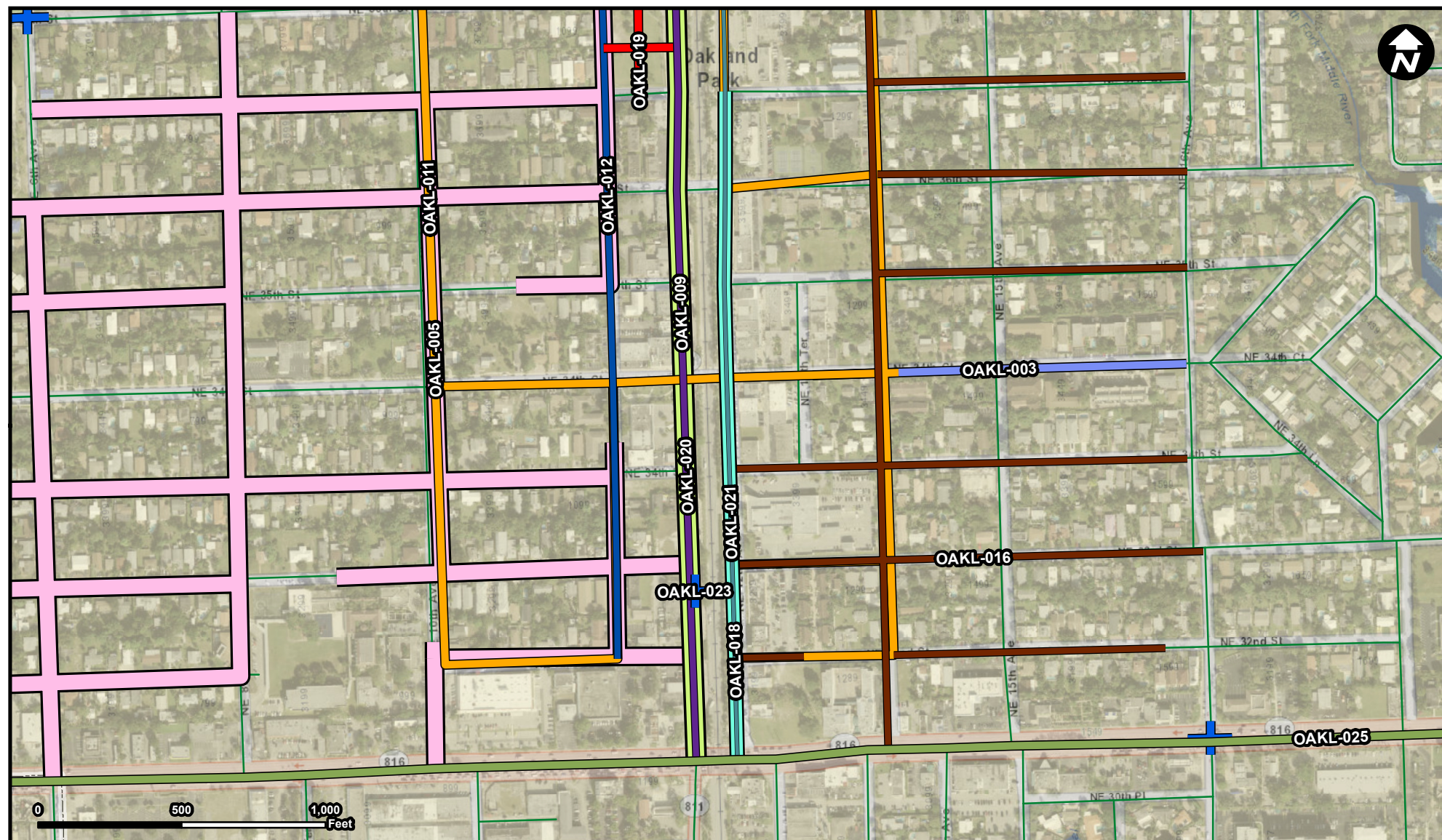
Source: Broward Municipal Surtax Projects - BMPO; ESRI Basemap

FROM:  
To:



# OAKL-018

Project Name  
Mainstreet Drainage



## Legend

	OAKL-003		OAKL-019
	OAKL-005		OAKL-020
	OAKL-009		OAKL-021
	OAKL-011		OAKL-023
	OAKL-012		OAKL-025
	OAKL-016		Municipality
	OAKL-018		Unincorporated

**Suggested Work Mix:** Resiliency Improvements  
**Primary Work Mix:**  
**Secondary Work Mix:**

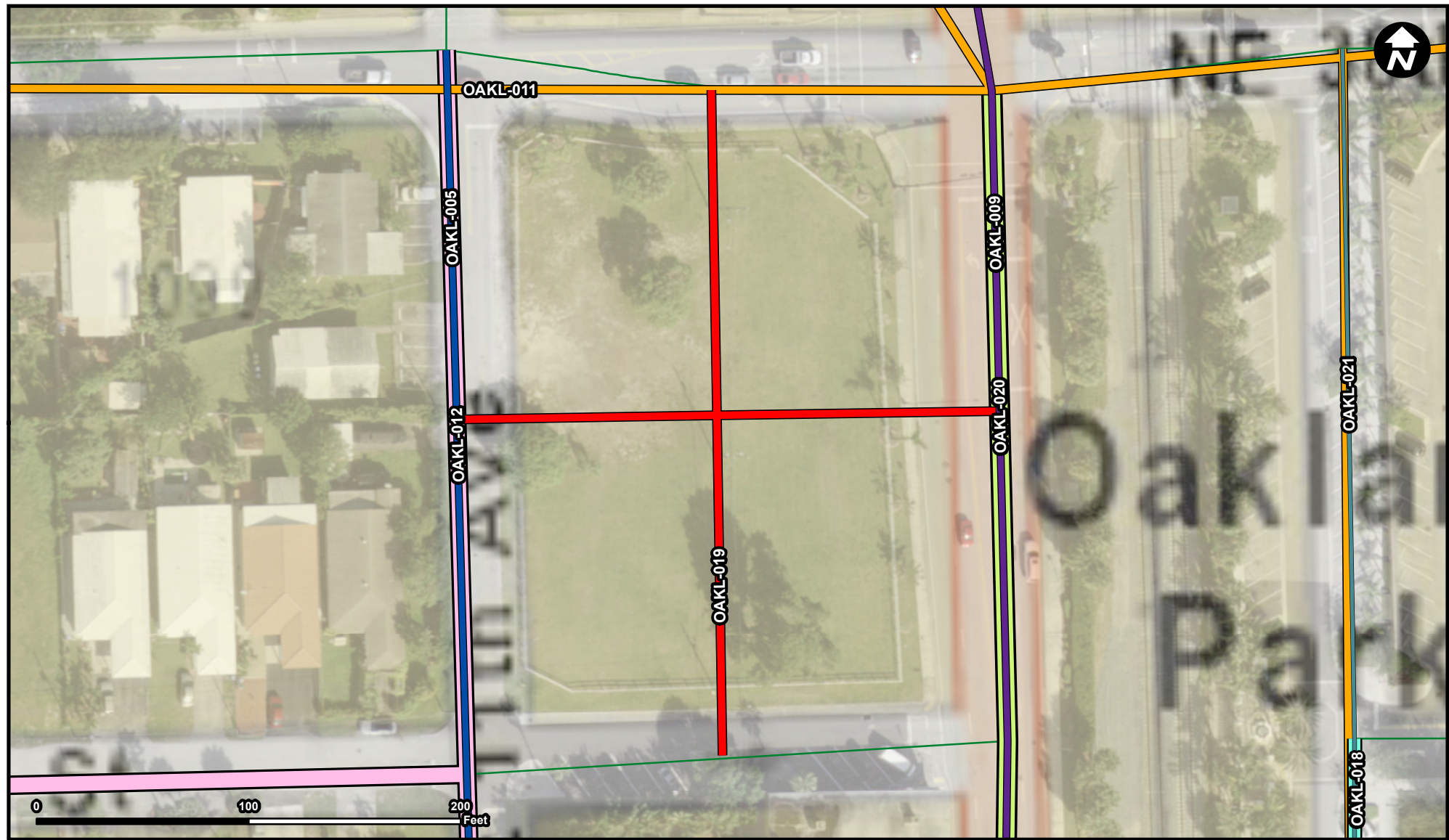
## Project Description & Project Scope

Installation of pump station and drainage pipe to connect to existing 72" trunkline that outfalls into C-13.


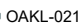



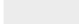




Installation of pump station and drainage pipe to connect to existing 72" trunkline that outfalls into C-13.

FROM:  
To:





Legend

- |   |  |
|---|--|
|  OAKL-005 |  OAKL-021       |
|  OAKL-009 |  Municipality   |
|  OAKL-011 |  Unincorporated |
|  OAKL-012 |  |
|  OAKL-018 |  |
|  OAKL-019 |  |
|  OAKL-020 |  |

**Suggested Work Mix:**  
**Primary Work Mix:**  
**Secondary Work Mix:**

**Capacity Increase, Widening**  
**Parking Facility**  
**Transit Improvement**

**Project Description & Project Scope**

From Dixie Highway to NE 40 Ct In support of the proposed Coastal Link, the City requests funding for the construction of a multi-level parking structure for the City's downtown Transit and future railway station.

From Dixie Highway to NE 40 Ct In support of the proposed Coastal Link, the City requests funding for the construction of a multi-level parking structure for the City's downtown Transit and future railway station.

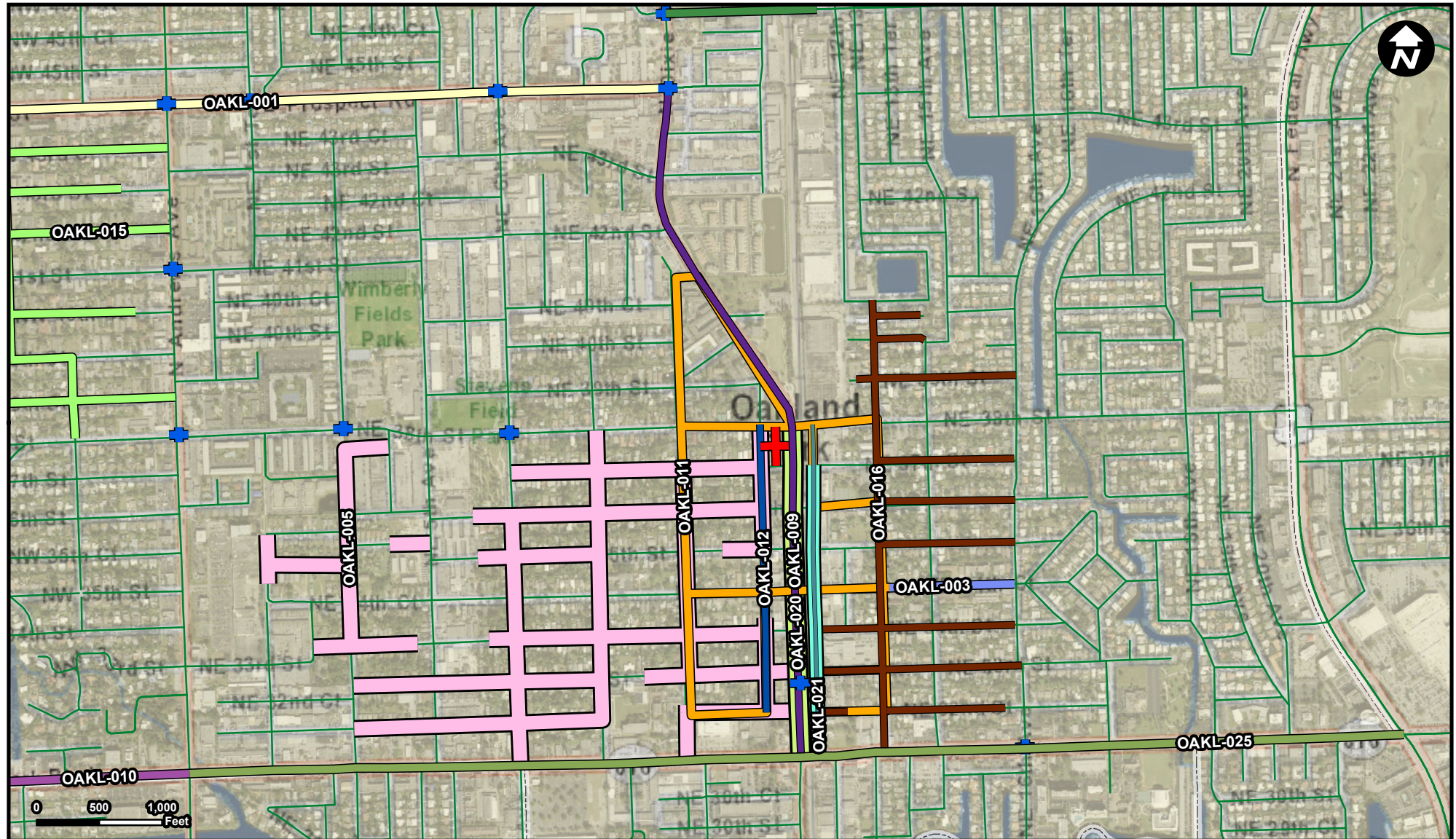
Source: Broward Municipal Surtax Projects - BMPO; ESRI Basemap

FROM:  
To:

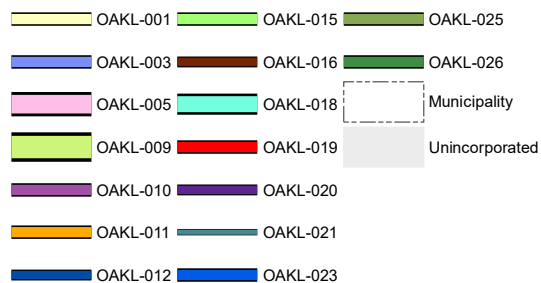


# OAKL-020

**Project Name**  
Dixie Highway Complete Streets



## Legend



**Suggested Work Mix:**  
**Primary Work Mix:**  
**Secondary Work Mix:**

**Bicycle Pedestrian Infrastructure**  
**Safety Project**  
**Bike Lane Sidewalk**

**Project Description & Project Scope**

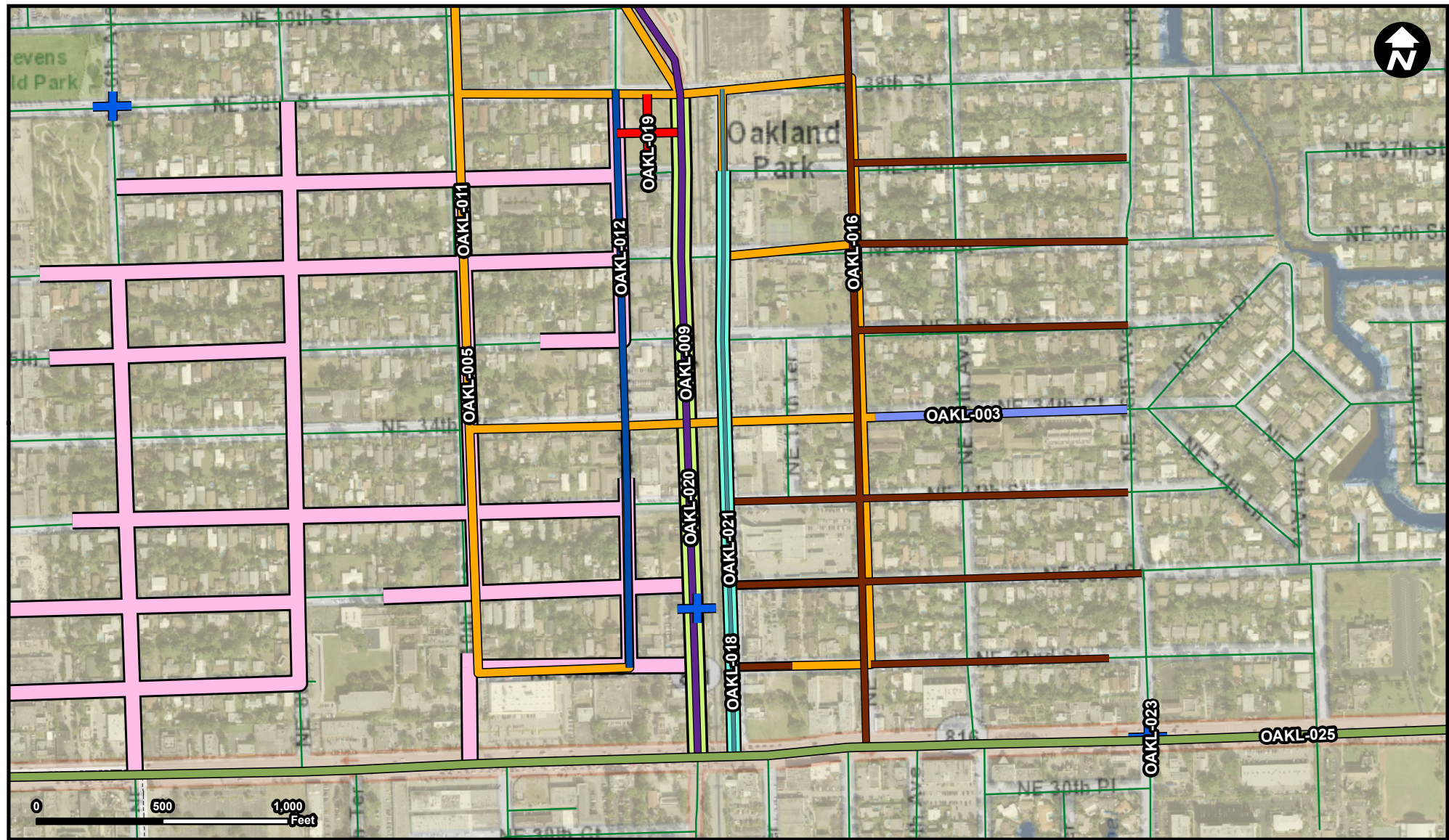
From Oakland Park Blvd to Prospect Rd. Corridor upgrades using complete streets to enhance safety for pedestrians, cyclists, motorists, and public transportation users. Enhance pedestrian crossings across Dixie Highway and the FEC

Enhance pedestrian crossings across Dixie Highway and the FEC, while adding multimodal forms of transportation.














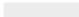
Source: Broward Municipal Surtax Projects - BMPO; ESRI Basemap

**FROM:** Oakland Park Blvd  
**To:** Prospect Rd





## Legend

- |   |  |
|---|--|
|  OAKL-003 |  OAKL-019       |
|  OAKL-005 |  OAKL-020       |
|  OAKL-009 |  OAKL-021       |
|  OAKL-011 |  OAKL-023       |
|  OAKL-012 |  OAKL-025       |
|  OAKL-016 |  Municipality   |
|  OAKL-018 |  Unincorporated |

**Suggested Work Mix:**  
**Primary Work Mix:**  
**Secondary Work Mix:**

**Bicycle Pedestrian Infrastructure**  
**Bike Lane Sidewalk**  
**Safety Project**

**Project Description & Project Scope**

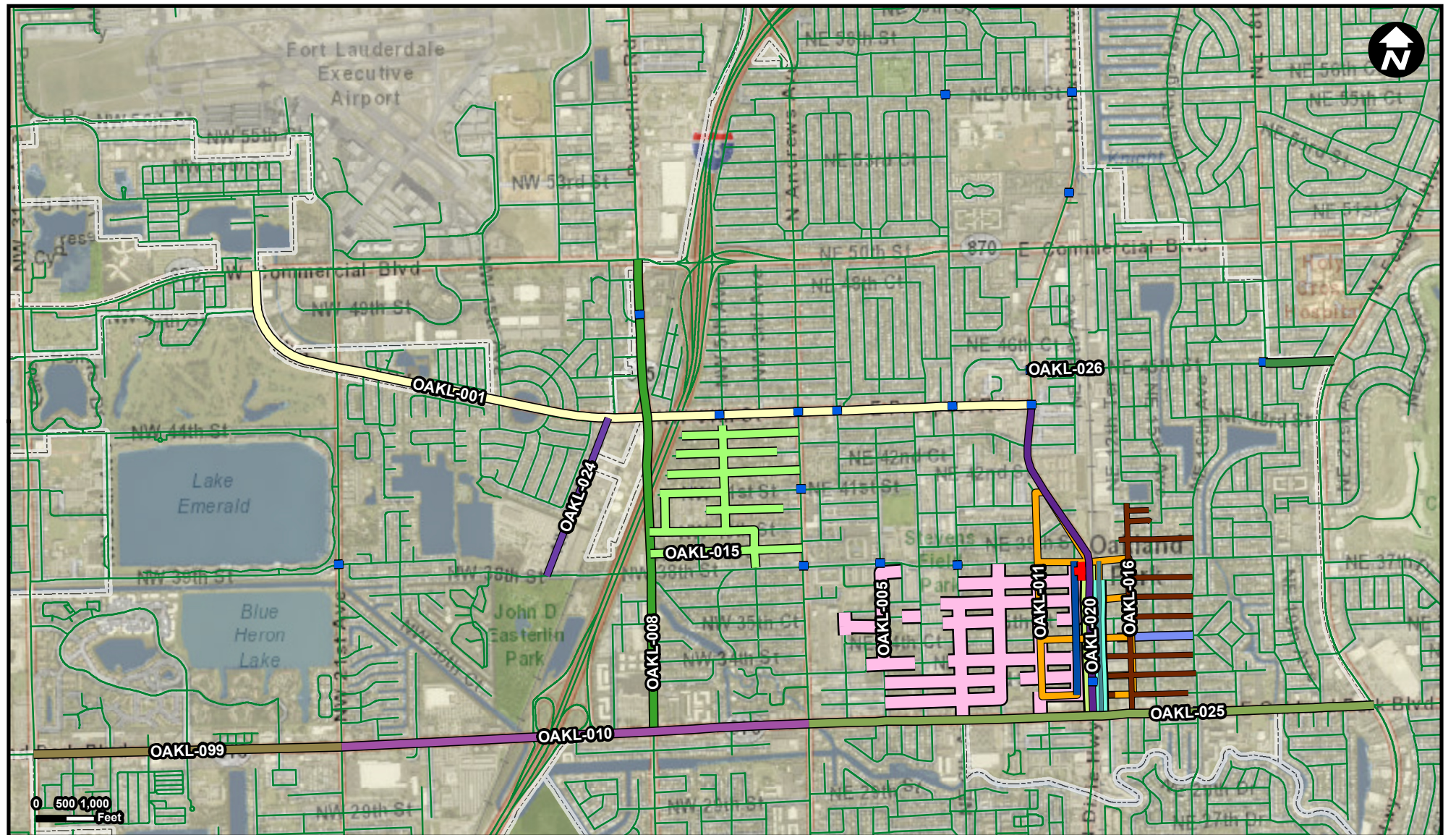
ΓÇ£Bicycle/Pedestrian Main StreetΓÇ¥ along NE 12 Ave from NE 38th Street to Oakland Park Boulevard. The project includes a redesign of the current roadway to convert the roadway into a multi-modal and pedestrian friendly corridor.

ΓÇ£Bicycle/Pedestrian Main StreetΓÇ¥ along NE 12 Ave from NE 38th Street to Oakland Park Boulevard.

Source: Broward Municipal Surtax Projects - BMPO; ESRI Basemap

**FROM:** NE 38th Street  
**To:** Oakland Park Blvd





## Legend

OAKL-001	OAKL-012	OAKL-023
OAKL-003	OAKL-015	OAKL-024
OAKL-005	OAKL-016	OAKL-025
OAKL-008	OAKL-018	OAKL-026
OAKL-009	OAKL-019	OAKL-099
OAKL-010	OAKL-020	Municipality
OAKL-011	OAKL-021	Unincorporated

## Suggested Work Mix:

Primary Work Mix:

Secondary Work Mix:

Signal Enhancement

Traffic Signals

Safety Project

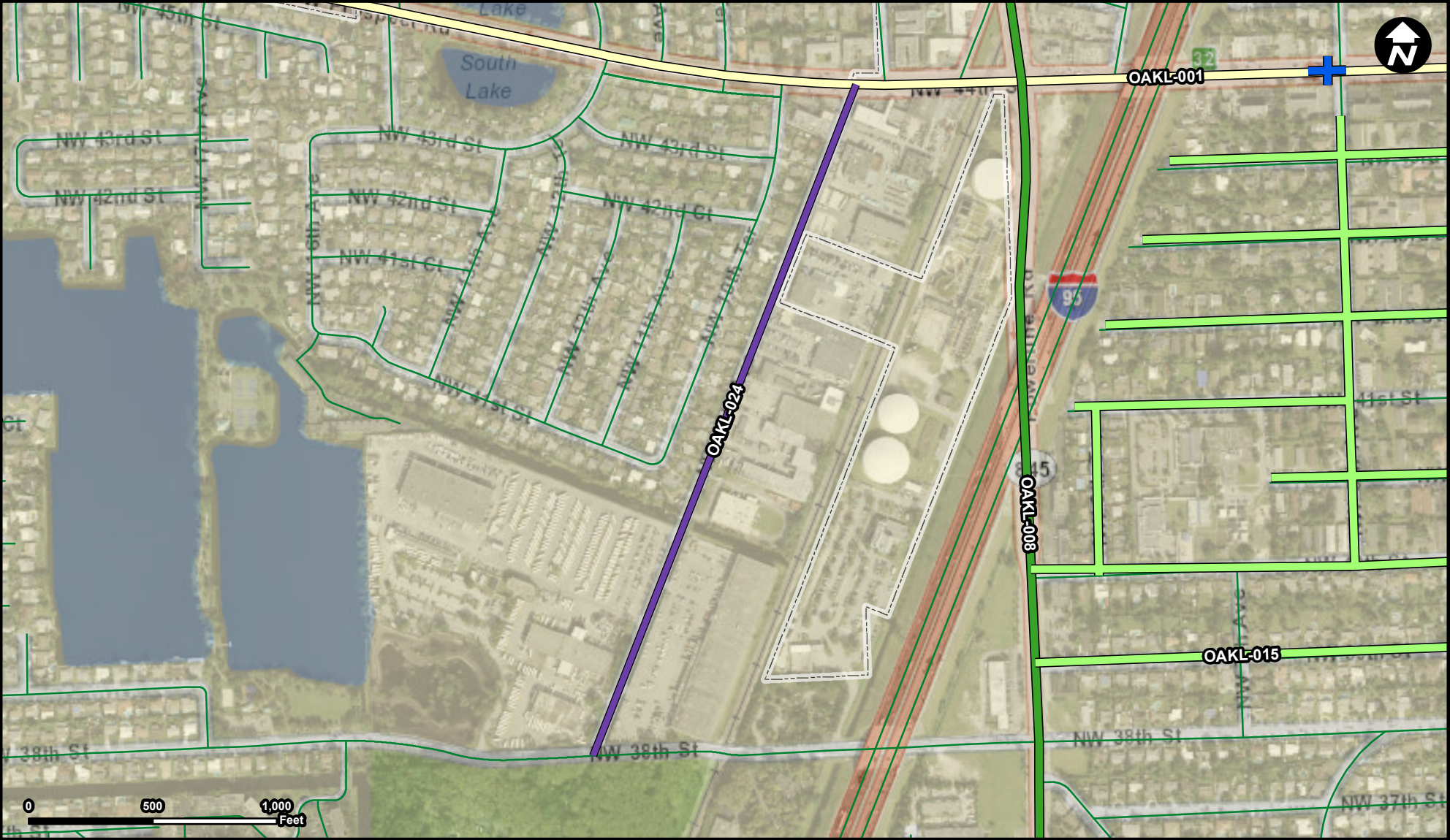
## Project Description & Project Scope

20 signalized intersections throughout the City

20 signalized intersections throughout the City

FROM:  
To:





Legend

- OAKL-001
- OAKL-008
- OAKL-015
- OAKL-023
- OAKL-024
- Municipality
- Unincorporated

**Suggested Work Mix:** Bicycle Pedestrian Infrastructure  
**Primary Work Mix:** Bike Lane Sidewalk  
**Secondary Work Mix:** Safety Project

**Project Description & Project Scope**

"NW 10 Ave from Park Lane West to Prospect Rd. Roadway, solid green 4' bike lanes, sidewalks, lighting, landscape improvements and drainage improvements."  
Streetscape and improvement project from Park Lane West to Prospect Rd. Roadway, installation of solid green 4' bike lanes, sidewalks, lighting, landscape improvements and drainage improvements.

**FROM:** Park Lane West  
**To:** Prospect Road



**Project Name**  
Oakland Park Blvd Gateway



- |                            |                                 |
|----------------------------|---------------------------------|
| <b>Suggested Work Mix:</b> | Landscaping, Hardscape, Signage |
| <b>Primary Work Mix:</b>   | Transit Improvement             |
| <b>Secondary Work Mix:</b> | Signing/Pavement                |

**FROM:** Andrews Avenue  
**To:** Federal Highway

## Project Description & Project Scope

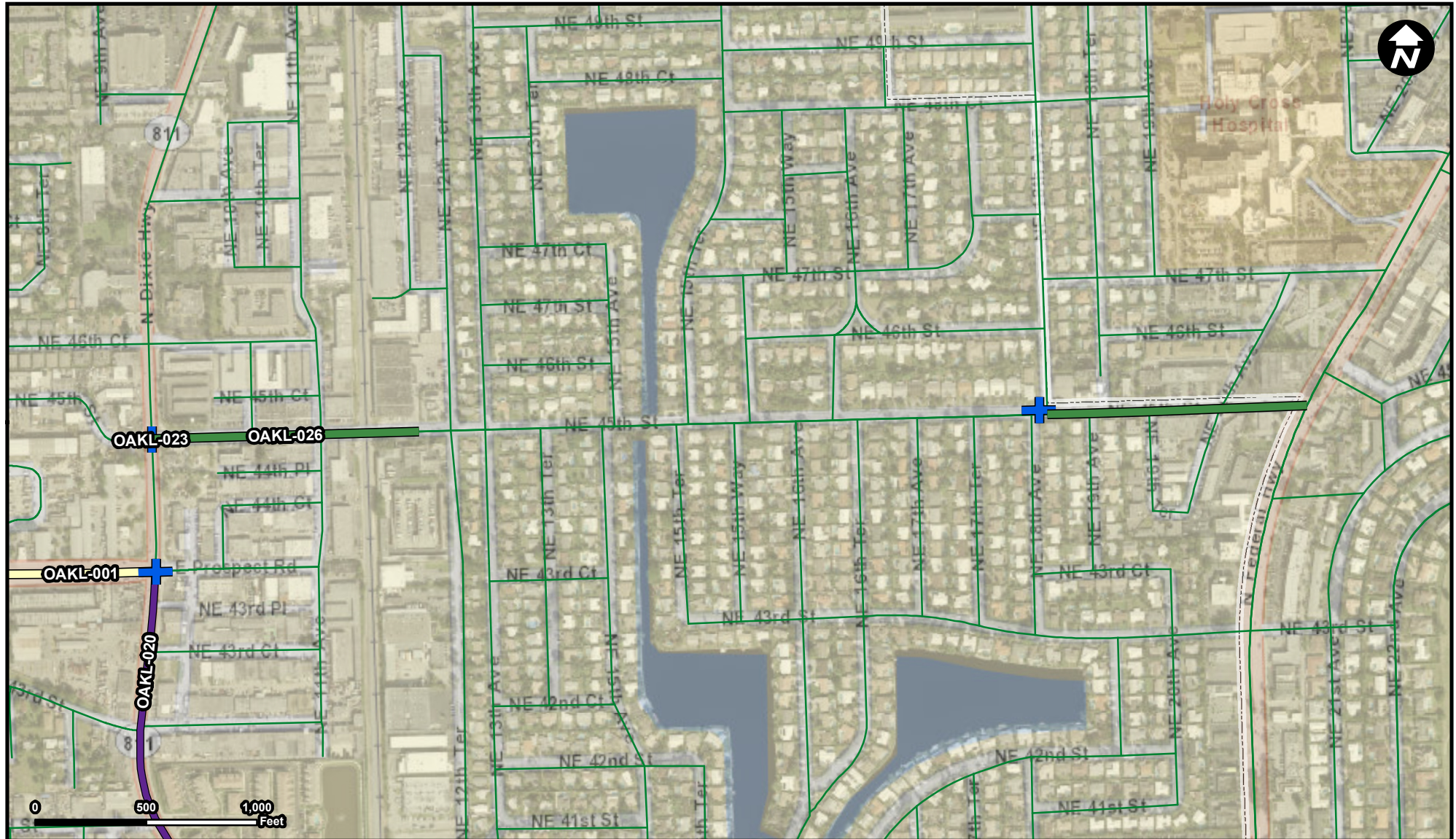
Gateway Design for Oakland Park Blvd to Federal Highway. Project is in partnership with the City of Wilton Manors.

Gateway Design for Oakland Park Blvd to Federal Highway. Project is in partnership with the City of Wilton Manors.









# OAKL-026

**Project Name**  
Floranada Sidewalk Network



### Legend

-  OAKL-001  
 OAKL-020  
 OAKL-023  
 OAKL-026  
 Municipality  
 Unincorporated

<b><u>Suggested Work Mix:</u></b>	<b>Bicycle Pedestrian Infrastructure</b>
<b><i>Primary Work Mix:</i></b>	<b>Bike Lane Sidewalk</b>
<b><i>Secondary Work Mix:</i></b>	<b>Safety Project</b>

## Project Description & Project Scope

## Bicycle Pedestrian Infrastructure Bike Lane Sidewalk Safety Project

Floranada Sidewalk Network. Infill of sidewalks from Dixie Highway to Federal Highway. Install 5' concrete sidewalks on each side of the street.

**FROM:** Dixie Highway  
**To:** Federal Highway





Unincorporated

**FROM:** NW 31 Avenue  
**To:** NW 21 Avenue