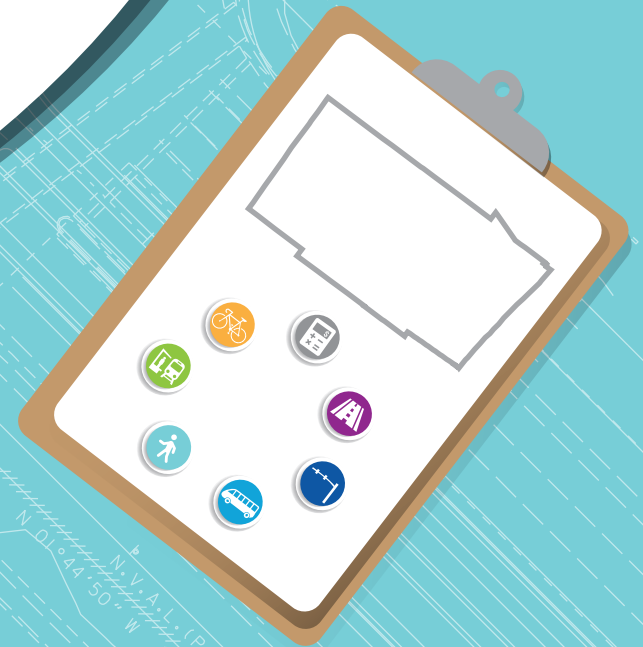


MULTIMODAL PRIORITIES LIST

FY 2021 Priorities List (to be used in the development of next TIP FY 2022)



#MMPL

TABLE OF CONTENTS

- 1. Overview..... 1
- 2. Project Prioritization..... 5
- 3. Broward MPO Priority List..... 8
 - Unified Planning Work Program (UPWP)..... 9
 - Complete Streets and other Localized Initiatives (CSLIP)..... 11
 - Complete Streets Master Plan (CSMP)..... 25
 - Mobility Hubs..... 33
 - Roadway..... 35
 - Transit..... 53
 - Systems Management/Safety..... 56
- 4. Florida's Turnpike Enterprise List of Priorities..... 59
- 5. Port Everglades List of Priorities..... 62



OVERVIEW

DEVELOPMENT

The Broward Metropolitan Planning Organization (MPO) is required to develop a Multimodal Priority List (MMPL) in coordination with Florida Department of Transportation (FDOT) District Four planning staff. The list is submitted to the District by August 1 annually [s.339.175 (8)(a) and (b), F.S.]. FDOT uses the MMPL to develop the Draft Tentative Work Program that is presented to the MPO each fall, which in turn is used to develop the following year's Transportation Improvement Program (TIP). The Fiscal Year (FY) 2021 MMPL is used to develop the FY 2022-2026 Draft Tentative Work Program and the FY 2022-2026 TIP.

The MMPL is a core product of the MPO that serves as a bridge between the MPO's Long Range Transportation Plan (LRTP)/Metropolitan Transportation Plan (MTP) and the TIP. Figure 1 shows the Broward MPO core product development process. The MMPL is used to set funding priorities for federal and state funds within our region. Only projects contained in the MTP are eligible for inclusion on the MMPL. Figure 2 presents the relationship among MTP, MMPL, and TIP.

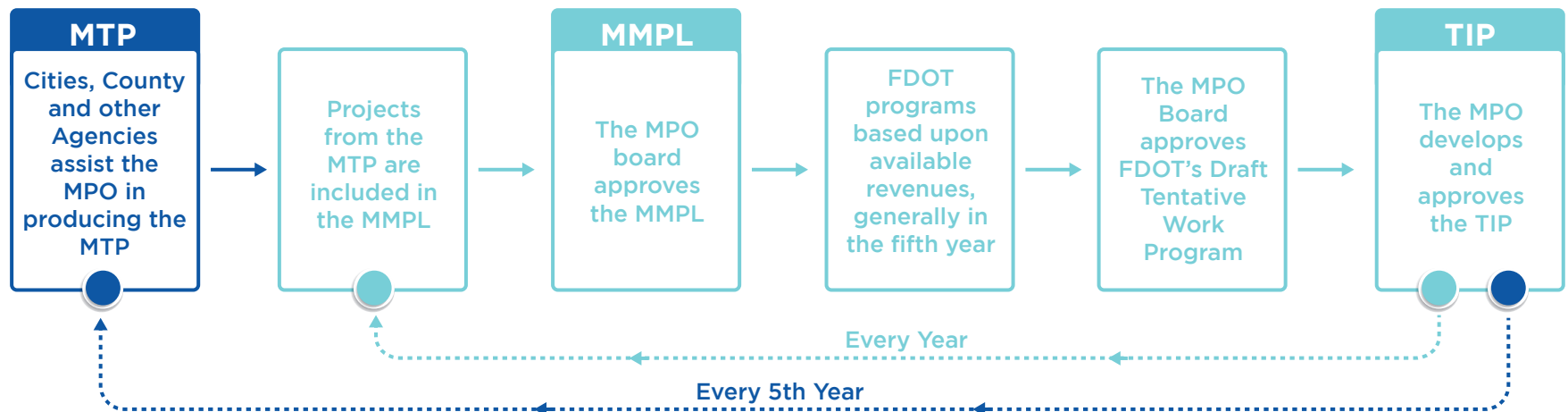


Figure 1 Core Product Development Process

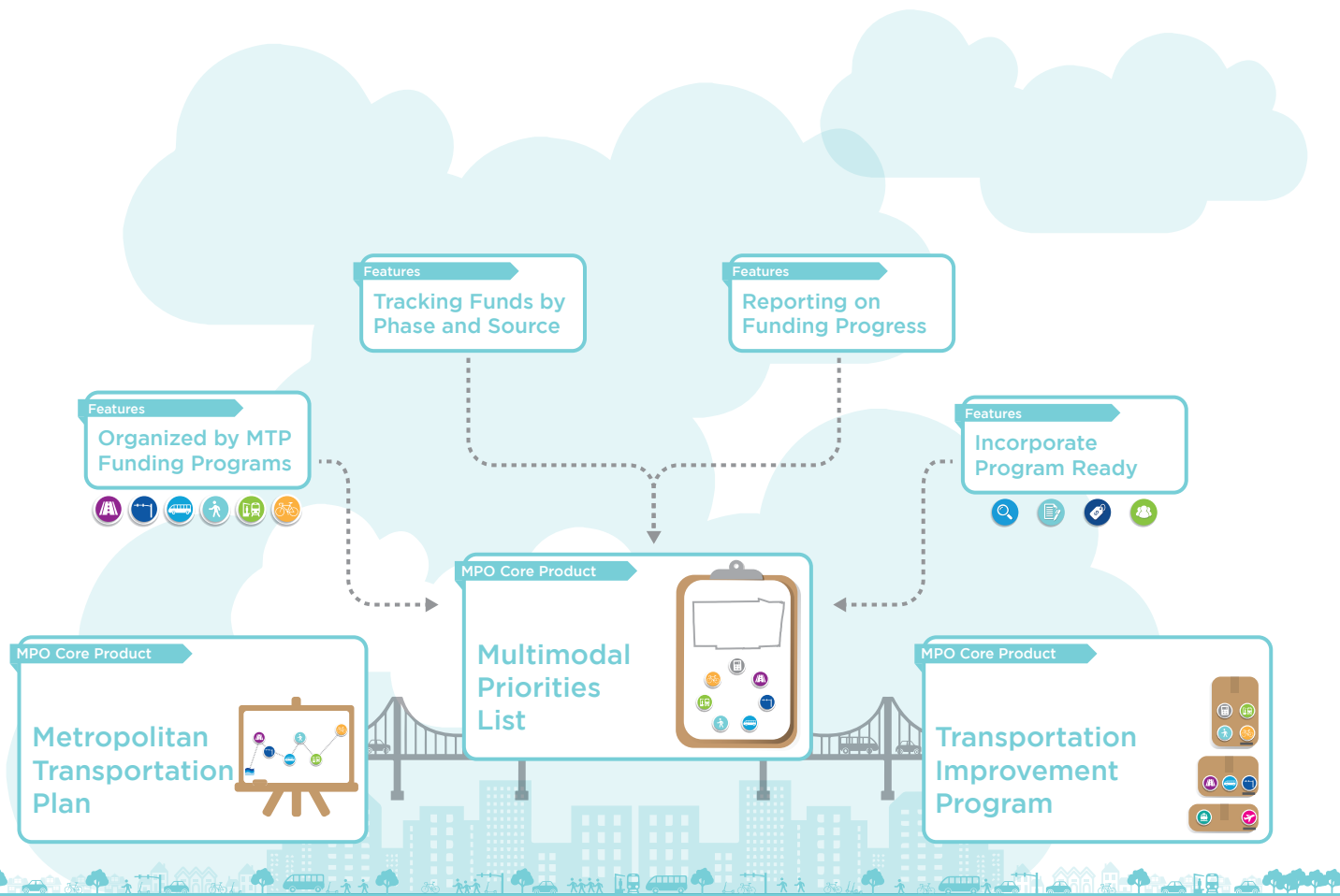


Figure 2 Relationship among MTP, MMPL and TIP

The 2045 MTP was approved at the December 2019 MPO Board meeting. The Cost Feasible Plan, as a component of the MTP including a list of prioritized projects, was approved with it. The Cost Feasible Plan includes six funding programs in order to account for the region’s multimodal transportation needs. To be consistent with the 2045 MTP and the funding sources assumed in the financial plan of the 2045 MTP, the MMPL is organized by six funding programs. It utilizes the 2045 MTP’s allocations for the Broward MPO’s attributable funds as shown in Table 1.

Table 1 Programs and funding allocation

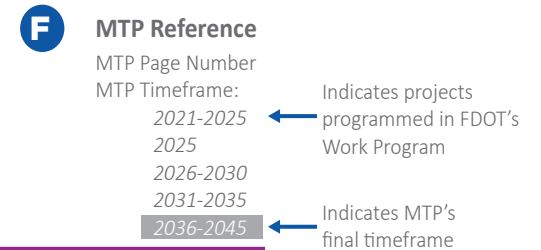
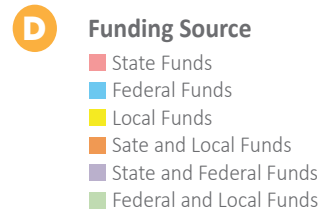
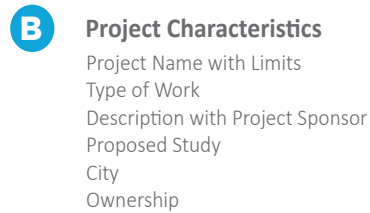
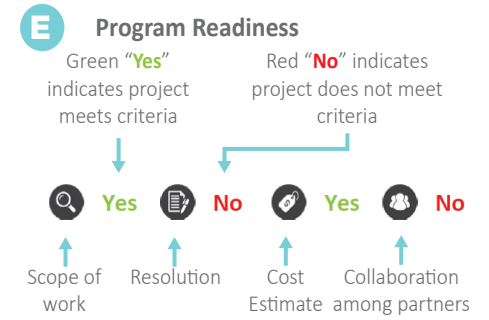
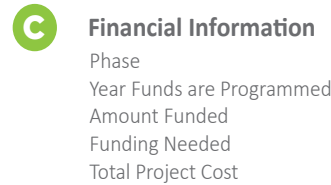
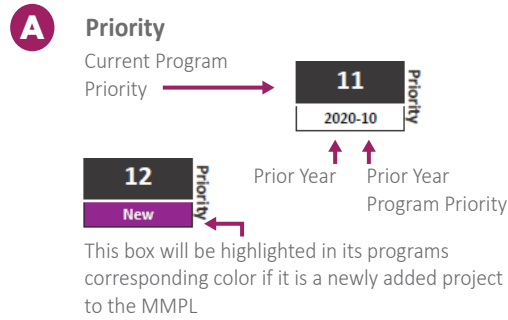
Program	Allocation
Highway/Roadway	20%
Transit	10%
Systems Management/Safety	15%
Complete Streets and other Localized Initiatives Program (CSLIP)	20%
Complete Streets Master Plan (CSMP)	25%
Mobility Hubs	10%
Total	100%

In addition, the MMPL assigns a preferred funding source for each prioritized project that is consistent with the 2045 MTP’s cost feasible plan. The funding sources are indicated as State, Federal, Local or any combination of the three. To facilitate project delivery, the MMPL emphasizes a “Program Ready” concept. “Program ready” means that a project includes a clear scope of work, approved resolution, cost estimate, and collaboration with partners. Projects that meet all of these four criteria are eligible for funding. For an example of how these concepts are illustrated in the MMPL, please refer to Figure 3.

UNIFIED PLANNING WORK PROGRAM (UPWP)

Besides the six programs mentioned earlier, funding for the Broward MPO’s Unified Planning Work Program (UPWP)/budget is top priority. The MPO’s UPWP contains the agency’s Strategic Business Plan activities, planning efforts, and operating budget for a two-year period. The UPWP includes a description of the planning work and resulting products, who will perform the work, time frames for completing the work, the cost of the work, and the source(s) of funds. Further, the UPWP provides a comprehensive picture to citizens and stakeholders who wish to see how federal and state transportation planning dollars are to be spent by the Broward MPO, local governments, and transit agencies providing services to Broward. The UPWP is developed by MPO staff in consultation with partner agencies, municipal staff, and input from local citizens and stakeholders. The information collected is incorporated into the UPWP and budgeted accordingly. To support services that the MPO provides to the Broward region, the Broward MPO assigns Surface Transportation Program – Urban areas >200K (SU) funds to the UPWP. Available MPO attributable funds for the six programs excludes SU funds already allocated to UPWP.

HOW TO READ THE BROWARD MPO PRIORITY LIST



Roadway							Roadway MPO Adopted Program Funding Goal 20%	
Phase	<2021	2021	2022	2023	2024	2025	Amount Funded	Funding Needed
10 Priority 2020-16 New	SW 136TH AVE FROM SW 26TH ST TO SW 6TH CT - FM# 4463812					Funding Source: FEDERAL		
Type of Work:	Widen and reconfigure intersections					Proposed Study: N/A		
2020 MPO PRIORITY# 16 WIDEN 2 TO 4 LANES. Add landscape medians; expand sidewalks; add bike lanes; reconfigure roundabout at SW 14 Street. Construct roundabout at SW 26th Street and SW 136 th avenue. Project 2 of 2 from West Davie Roadway Improvements. Town of Davie sponsored.							MTP Page # 5-16	MTP Timeframe: 2026-2030
PDE	0	0	0	0	0	500,000	500,000	0
PE	0	0	0	0	0	0	0	2,405,320
CST	0	0	0	0	0	0	0	13,206,000
Total	0	0	0	0	0	500,000	500,000	15,611,320
CITY: DAVIE				OWNERSHIP: LOCAL		Total Project Cost Estimate: 16,111,320		
11 Priority 2020-10	SR-822/Sheridan St from US-1 to Dixie Hwy - FM#					Funding Source: STATE		
Type of Work:	Widening					Proposed Study: PD&E		
Widen from 4 to 6 lanes. Project Sponsor: Broward MPO							MTP Page # 5-11	MTP Timeframe: 2025
PE	0	0	0	0	0	0	0	941,147
ROW	0	0	0	0	0	0	0	38,332,475
CST	0	0	0	0	0	0	0	4,277,940
Total	0	0	0	0	0	0	0	43,551,562
CITY: HOLLYWOOD				OWNERSHIP: STATE		Total Project Cost Estimate: 43,551,562		
12 Priority New	Hollywood Blvd from US-1 to SR-A1A - FM#					Funding Source: STATE		
Type of Work:	Resiliency Study					Proposed Study: Resiliency		
Conduct study to determine resiliency improvements. Project Sponsor: Broward MPO							MTP Page # 5-13	MTP Timeframe: 2026-2030
PE	0	0	0	0	0	0	0	1,500,000
Total	0	0	0	0	0	0	0	1,500,000
CITY: HOLLYWOOD				OWNERSHIP: STATE		Total Project Cost Estimate: 1,500,000		

Figure 3 Sample of MMPL 4

PROJECT PRIORITIZATION

The 2035 LRTP established a new paradigm to provide a balanced transportation system with greater investments toward alternative modes such as transit, bicycle and pedestrian facilities, and smart growth policies. Both the Commitment 2040 and MTP 2045 follow this set standard. In order to guarantee that the transportation investments are balanced among the transportation modes, percentages agreed upon in the MTP 2045 by the MPO Board (during the MTP's development) were used to distribute revenue among the six programs. Projects within each program were prioritized according to criteria established for each individual program. The following describes the prioritization process for each of the six programs.

COMPLETE STREETS AND OTHER LOCALIZED INITIATIVES PROGRAM (CSLIP)

CSLIP provides funding for small local transportation projects that will improve safety and mobility for all transportation users. The MPO facilitates an annual competitive grant program to fund projects such as Complete Streets projects, traffic calming and intersection improvements, ADA compliance upgrades, bus shelters, bike racks, and technology advancements (e.g., transit signal priority and traffic control devices). Projects funded through this program are generally around \$2 million each.

CSLIP uses an objective tool to evaluate and rank the application submitted. This tool was developed with direction from the Board and uses several geographic datasets to score the projects. Evaluation criteria weights are 30% for safety, 24% for economic development, 23% for connectivity, and 23% for mobility.

COMPLETE STREETS MASTER PLAN (CSMP)

Complete streets are built for all users, emphasizing the safe and efficient movement of people including pedestrians, bicyclists, and transit riders. The MPO developed a CSMP to guide future investments by creating a prioritized list of projects based on technical, data-driven analysis and community input. Funding is allocated to this program based on the prioritized order established in the CSMP. Projects funded through this program are generally greater than \$2 million.

Prioritization is a process of scoring and ranking the Complete Streets projects and Super Connectors based on identified criteria or variables. The criteria is consistent with the goals and objectives established in the Commitment 2040 LRTP, continues in the Commitment 2045 MTP, and builds upon the format and content of the CSLIP evaluation criteria. The criteria between the two differ slightly but fit within the same theme.

 For CSLIP details, please visit the CSLIP policies link at: http://www.browardmpo.org/images/WhatWeDo/CSLIP/Round_4_Policies_Final.pdf and the evaluation chart at: http://www.browardmpo.org/images/WhatWeDo/CSLIP/EvaluationGraphic_Draft-v016.pdf

 For CSMP details, please refer to the CSMP prioritization criteria link at: http://www.browardmpo.org/images/CSMP/CSMP_prioritization_criteria.pdf

ROADWAY & TRANSIT PROGRAMS

Funding for the roadway program is allotted to transportation improvements that increase roadway capacity by building new roadways, adding lanes to existing roadways, or building/expanding interchanges and major intersections. Funding may also be allocated to concept studies, preliminary engineering, and design to support the development of roadway capacity projects. The transit funding program includes transit capital investments such as transit vehicles, transit technology investments (e.g., fare collection equipment, automatic passenger counters, vehicle location, etc.), and roadway improvements designed to serve as exclusive lanes for transit services (for which operating funding has been identified).

Projects in the Roadway Program and Transit Program follow the same prioritization process established in the MTP 2045. The prioritization criteria is based upon the MTP's Goals and Objectives, adopted by the MPO Board on May 10, 2018, and the Performance Measures developed to ensure consistency with the FAST Act. These six measures, which are referred to as planning factors, were identified as best representing the MTP's Goals and Objectives they are: (1) Mobility: Providing high speed and reliable travel between major activity centers and destinations. The focus of mobility is to get from one place to another as quickly as possible and typically is characterized by longer trips. (2) Accessibility: Providing access and circulation within higher-density, mixed-use places; tend to be shorter trips. (3) Safety: Reducing the number and severity of crashes. (4) Equity: Ensuring that benefits and impacts are shared among Broward's population. (5) Environmental Stewardship: Protecting the natural and built environment. (6) Economic Vitality: Supporting economic activity and businesses.

Each of the six planning factors were given a weighted value to align it with its importance to the community. The weighting values were determined through an interactive polling process with the Technical Advisory Committee (TAC), the Citizens' Advisory Committee (CAC), and the MPO Board. The values obtained were averaged and resulted: Mobility – 20.5, Accessibility – 20.8, Safety – 18.7, Equity – 14.3, Environmental Stewardship – 12.8, and Economic Vitality – 13.0. Six matrixes with prioritization criteria were developed for each planning factor respectively. These matrixes include evaluation criteria, assessment scoring, and scoring guidelines. Through several discussions with the TAC and CAC, the prioritization criteria were revised and shown in tables 1 through 6 in the Technical Report #4 Project Prioritization Process.

Several key changes that resulted from this process were:

- The inclusion of additional Safety criteria to better reflect the importance of this issue;
- The addition of a positive criteria for projects that may improve environmental conditions;
- Clarifications to several criteria to ensure that both roadway and transit projects were evaluated; and
- Adjustments to the Sea Level Rise Mitigation criteria to account for projects that improve the resiliency of infrastructure to extreme weather, regardless of the project's location in a defined vulnerability area.

It is important to note that whereas this process has been developed for the 2045 MTP, these prioritization criteria and planning factor weightings can change over time as the Emphasis Areas stressed by the federal and state government change and local stakeholder preferences change. Future MTPs will address these changes with adjustments to these factors. In addition to an overall process, the Broward MPO project prioritization criteria were developed with the following considerations:

- Projects are to be evaluated regardless of their mode (roadway, transit, Transportation Systems Management and Operations (TSM&O), etc.).
- Scores are to be normalized to account for variance in maximum points awarded in each planning factor group.
- An initial recommendation of rounding negative scores to 0 was reconsidered at the TAC's request to better reflect the potential negative impacts of a project. Thus, negative scores are carried through.

SYSTEMS MANAGEMENT/SAFETY PROGRAM

Funding allocated to this program is to be focused on Transportation Systems Management and Operations (TSM&O), a program based on actively managing the multimodal transportation network, measuring performance, streamlining and improving the existing system, promoting effective cooperation/collaboration, and delivering positive safety and mobility outcomes to the traveling public. Example projects funded in this program include signal timing/coordination and major safety improvements. Funding in this program is also set aside to support studies to identify, prioritize, and implement safety improvements.


TSM&O projects on-state highway system were selected and prioritized by the FDOT. Safety improvement study projects were selected and prioritized according to the severity index as part of the Commitment 2045 MTP. The severity index is a measure that looks at total crashes and crash severity. It uses a weighted average (higher score for incapacitating and fatal crashes) to develop an index that ranks locations in terms of their importance for future safety analysis and improvements. The safety improvement projects identified through safety studies will be eligible for funding allocated to the Systems Management/Safety Program, as discussed previously. MPO staff are coordinating with FDOT District 4 and other local partners to lead these studies in the near future.

MOBILITY HUB PROGRAM

The Mobility Hub concept was initially introduced in the 2035 LRTP. The Mobility Hub program continues to be included in the 2040 LRTP and 2045 MTP. Mobility Hubs are transit access points with frequent transit service, high development potential, and a critical point for travel demand or transfers within the transit system. Funding through this program is available to help support the collaborative development of Mobility Hubs as communities identify and commit to opportunities that further the objectives of this program.

Prioritization of Mobility Hub projects is based on identified criteria or variables. Guided by the goals in the 2045 MTP, the recommended evaluation framework measures a candidate location's existing market and network readiness by incorporating the best available information into the evaluation matrix for review. The matrix includes measures of existing trip producers and attractors, potential trip producers, market ready attractors, existing transit ridership, and frequency. The prediction of theoretical future service would not be the driving factor for the evaluation although potential service is a consideration. The third factor in the evaluation is sponsor readiness, which is the willingness of the local government to support Mobility Hub investment.

 For Systems Management/Safety details, please refer to 2045 MTP at: <http://www.browardmpo.org/index.php/mtp-documents>

 For Mobility Hub details, please refer to the Revisit & Update Mobility Hubs Program - Assess Current Methodology Technical Memorandum link at: http://www.browardmpo.org/images/2-TM1-Mobility_Hubs_Revisit-Assess_Current_Methodology-January_2018_FINAL.pdf

BROWARD MPO PRIORITY LIST



UPWP

UNIFIED PLANNING WORK PROGRAM

PROGRAM



LEGEND:



**PRIORITIZED
UPWP PROJECTS**



UPWP

Phase	<2021	2021	2022	2023	2024	2025	Amount Funded	Funding Needed		
01	BROWARD MPO UPWP - FM# 4393243-4-5						Funding Source: FEDERAL			
2020-01	Type of Work: TRANSPORTATION PLANNING				Proposed Study: N/A		Yes	Yes	Yes	Yes
2020 MPO PRIORITY #1 UPWP							<i>MTP Page # 1-2</i>			
PLN	0	5,000,000	4,000,000	4,000,000	4,500,000	5,000,000	22,500,000	5,000,000		
Total	0	5,000,000	4,000,000	4,000,000	4,500,000	5,000,000	22,500,000	5,000,000		
CITY: BROWARD MPO				OWNERSHIP: N/A		Annual Project Cost Estimate:		5,000,000		

CSLIP

COMPLETE STREETS AND OTHER LOCALIZED INITIATIVES PROGRAM

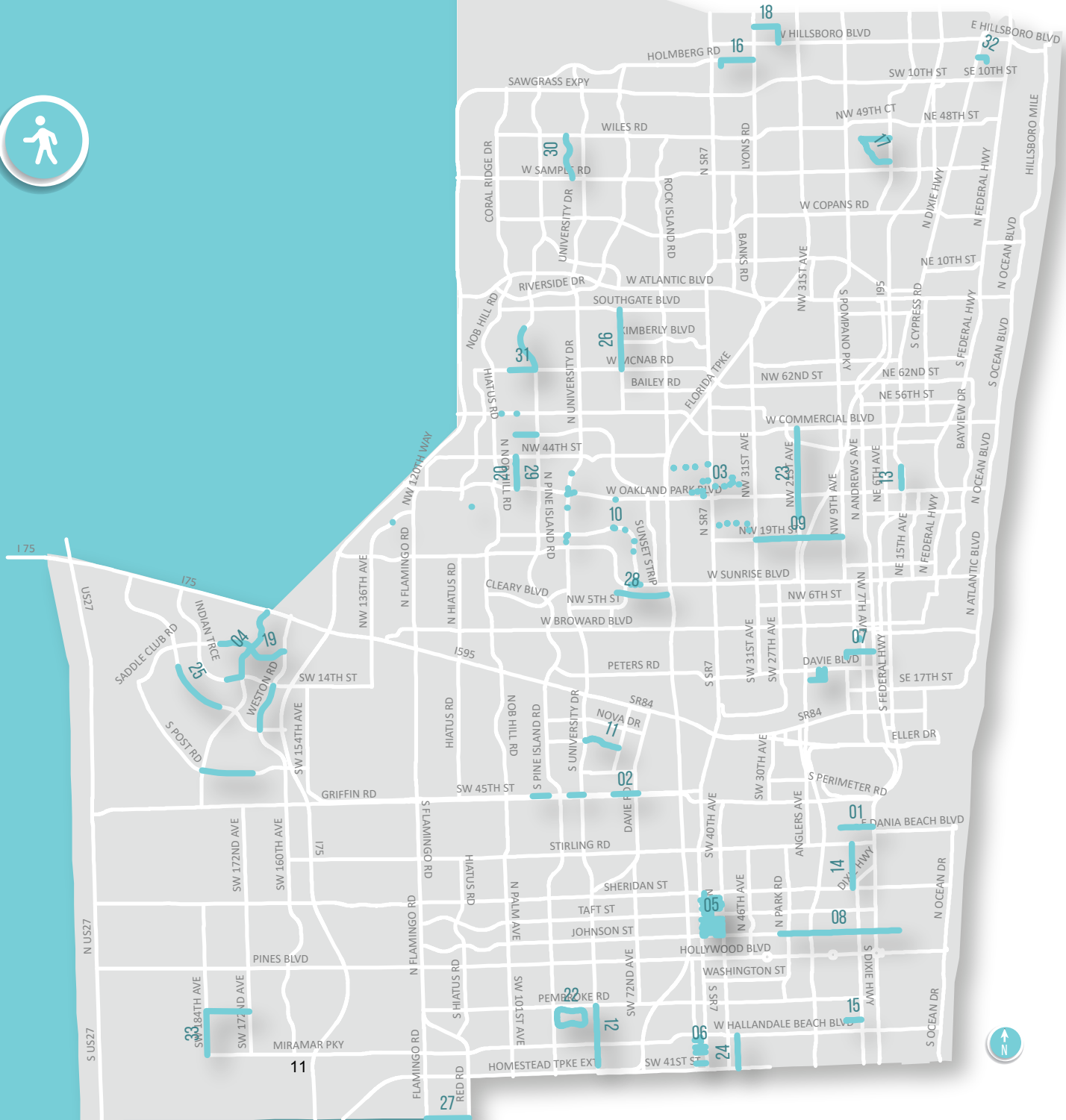
PROGRAM



LEGEND:



PRIORITIZED
CSLIP PROJECTS



CSLIP

CSLIP MPO Adopted Program Funding Goal 20%

Phase	<2021	2021	2022	2023	2024	2025	Amount Funded	Funding Needed
-------	-------	------	------	------	------	------	---------------	----------------

01 2020-06	Priority	NW 1ST ST FROM BRYAN ROAD TO SR-5/US-1 - FM# 4439491					Funding Source: FEDERAL		
		Type of Work: BIKE LANE/SIDEWALK		Proposed Study: N/A			Yes	Yes	Yes
2020 MPO CSLIP PRIORITY #6 ADMINISTERED BY FDOT ON BEHALF OF THE CITY OF DANIA BEACH PROVIDE WIDER SIDEWALKS, BIKE LANES, ON-STREET PARKING, TRAFFIC CALMING, ENHANCED CROSSWALKS AND LIGHTING AND PEDESTRIAN CROSSING OF THE FEC RR ON NW 1ST FROM BRYAN BRYAN RD. TO SR-5/US-1									
<i>MTP Page # 5-3</i>									
ENV	0	0	0	0	10,000	20,000	30,000	0	
PE	0	0	0	0	477,001	0	477,001	0	
CST	0	0	0	0	0	0	0	2,775,587	
Total	0	0	0	0	487,001	20,000	507,001	2,775,587	
CITY: DANIA BEACH				OWNERSHIP: LOCAL			Total Project Cost Estimate:		3,282,588

02 2020-07	Priority	ORANGE DRIVE FROM SW 92ND AVENUE TO SW 62ND AVENUE - FM# 4439501					Funding Source: FEDERAL		
		Type of Work: BIKE LANE/SIDEWALK		Proposed Study: N/A			Yes	Yes	Yes
2020 MPO CSLIP PRIORITY #7 ADMINISTERED BY FDOT ON BEHALF OF THE TOWN OF DAVIE PROVIDE 5 FT SIDEWALKS TO FILL IN EXISTING GAPS IN NETWORK CROSSWALKS, ADA CURB RAMPS AND PEDESTRIAN BRIDGE INCLUDED									
<i>MTP Page # 5-3</i>									
ENV	0	0	0	0	0	30,000	30,000	0	
PE	0	0	0	0	288,539	0	288,539	0	
CST	0	0	0	0	0	0	0	851,892	
Total	0	0	0	0	288,539	30,000	318,539	851,892	
CITY: DAVIE				OWNERSHIP: LOCAL			Total Project Cost Estimate:		1,170,431

Phase	<2021	2021	2022	2023	2024	2025	Amount Funded	Funding Needed
-------	-------	------	------	------	------	------	---------------	----------------

03	Priority	CITY OF LAUDERDALE LAKES TRAFFIC CALMING VARIOUS LOCATIONS - FM# 4439511					Funding Source: FEDERAL		
		2020-08	Type of Work: MISCELLANEOUS CONSTRUCTION			Proposed Study: N/A		Yes	Yes
2020 MPO CSLIP PRIORITY #8 ADMINISTERED BY FDOT ON BEHALF OF THE CITY OF LAUDERDALE LAKES; PROVIDE TRAFFIC CALMING DEVICES SUCH AS DECORATIVE PAVERS, SPEED BUMPS, PAVER CROSSWALKS, ISLAND AND ROUNDABOUT IN SEVERAL LOCATIONS THROUGHOUT THE CITY**SEE WP45** NW 24 ST. FROM SR-7 TO NW 34 AVE.;NW34 AVE. FROM NW 24 ST. TO NW 23 CT.; NW 23 CT. FROM NW 34 AVE. TO NW 32 TERR.NW32 TERR. FROM NW 23 CT. TO NW 21 ST.; NW 33 ST. FROM NW 46 AVE TO NW 43 AVE.; NW 43 AVE. FROM SR-816/OAKLAND PARK BLVD TO NWST.;NW 36 ST. FROM NW 43 AVE. TO SR-7;NW 34 ST. FROM SR-7 TO NW 33 AVE.; NW 35 AVE. FROM SR-816/OAKLAND PARK BLVD TO NW 37 AVE.;NW41 ST. FROM NW 52 AVE. TO NW 44 AVE.									
ENV	0	0	0	0	10,000	20,000	30,000	0	
PE	0	0	0	0	507,446	0	507,446	0	
CST	0	0	0	0	0	0	0	1,463,027	
Total	0	0	0	0	517,446	20,000	537,446	1,463,027	
CITY: LAUDERDALE LAKES				OWNERSHIP: LOCAL			Total Project Cost Estimate: 2,000,473		

04	Priority	BONAVENTURE BLVD. FROM INDIAN TRACE TO SR-84 - FM# 4439521					Funding Source: STATE AND FEDERAL		
		2020-09	Type of Work: BIKE LANE/SIDEWALK			Proposed Study: N/A		Yes	Yes
2020 MPO CSLIP PRIORITY #9 ADMINISTERED BY FDOT ON BEHALF OF THE CITY OF WESTON PROVIDE 4'-5' WIDE BIKE LANES									
ENV	0	0	0	0	10,000	20,000	30,000	0	
PE	0	0	0	0	516,000	0	516,000	0	
CST	0	0	0	0	0	0	0	2,656,689	
Total	0	0	0	0	526,000	20,000	546,000	2,656,689	
CITY: WESTON				OWNERSHIP: LOCAL			Total Project Cost Estimate: 3,202,689		

Phase	<2021	2021	2022	2023	2024	2025	Amount Funded	Funding Needed
-------	-------	------	------	------	------	------	---------------	----------------

05 2020-10	Priority	CITY OF HOLLYWOOD VARIOUS LOCATION - FM# 4439761					Funding Source: FEDERAL		
		Type of Work: BIKE LANE/SIDEWALK		Proposed Study: N/A			Yes	Yes	Yes
2020 MPO CSLIP PRIORITY #10 ADMINISTERED BY FDOT ON BEHALF OF THE CITY OF HOLLYWOOD COMPLETE SIDEWALK NETWORK: PROVIDE NEW5FT SIDEWALK WITH CURB RAMPS TO FILL-IN THE NEIGHBORHOODS OF HOLLYWOOD BEACH HEIGHTS AND HOLLYWOOD COUNTRY ESTATES.SHARROWS INCLUDED ON NORTH 58TH AVE. SEE WP45 FOR DETAILS JOHNSTON ST FROM SR-7 TO N 56 AVE, HAYES ST FROM DR-7 TO N 56 AVE.HAYES ST FROM SR-7 TO N 56 AVE. GARFIELD ST FROM SR-7 TO N 56 AVE. ARTHUR ST FROM SR-7 TO N 56 AVE. CLEVELAND ST FROM W OF N 57AVE. MCKINLEY ST FROM SR-7 TO N 56 AVE. BRANCH ST FROM N 57 AVE TO N 56 AVE. HAYES CT FROM N 58 TERR TO N 57 TERR. CALL ST FROM N58 TERR TO N 57 TERR									
ENV	0	0	0	0	0	20,000	20,000	0	
PE	0	366,290	0	0	57,800	0	424,090	0	
CST	0	0	0	0	0	0	0	2,133,960	
Total	0	366,290	0	0	57,800	20,000	444,090	2,133,960	

MTP Page # 5-3

CITY: HOLLYWOOD OWNERSHIP: LOCAL **Total Project Cost Estimate: 2,578,050**

06 2020-11	Priority	CITY OF MIRAMAR COMPLETE STREETS PHASE IV - FM# 4439771					Funding Source: FEDERAL		
		Type of Work: SIDEWALK		Proposed Study: N/A			Yes	Yes	Yes
2020 MPO CSLIP PRIORITY #11 ADMINISTERED BY FDOT ON BEHALF OF THE CITY OF MIRAMAR PROVIDE SIDEWALKS, PEDESTRIAN LIGHTING,CROSSWALKS AND ADA-COMPLIANT RAMPS IN VARIOUS LOCATIONS *SEE WP45* SW 31 ST. FROM SW61 AVE. TO SW 62 AVE., SW 61 AVE. FROM SW30TH ST. TO SW 32 ST., SW 34 ST. FROM SW 62 AVE.TO SR-7, SW 39 ST. FROM 62 AVE. TO SR-7.									
ENV	0	0	0	0	10,000	20,000	30,000	0	
PE	0	0	0	0	438,016	0	438,016	0	
CST	0	0	0	0	0	0	0	1,237,766	
Total	0	0	0	0	448,016	20,000	468,016	1,237,766	

MTP Page # 5-3

CITY: MIRAMAR OWNERSHIP: LOCAL **Total Project Cost Estimate: 1,705,782**

Phase	<2021	2021	2022	2023	2024	2025	Amount Funded	Funding Needed
-------	-------	------	------	------	------	------	---------------	----------------

07 2020-12	Priority	SHADY BANKS AND TARPON RIVER NEIGHBORHOOD VARIOUS LOCATIONS - FM# 4439781					Funding Source: FEDERAL		
		Type of Work: BIKE LANE/SIDEWALK		Proposed Study: N/A			Yes	Yes	Yes
2020 MPO CSLIP PRIORITY #12 ADMINISTERED BY FDOT ON BEHALF OF CITY OF FORT LAUDERDALE PROVIDE SIDEWALK TO FILL IN MISSINGLINKS, PEDESTRIAN LIGHTING, TRAFFIC CALMING, AND ADA-COMPLIANT RAMPS IN VARIOUS LOCATIONS. MTP Page # 5-3									
ENV	0	0	0	0	10,000	20,000	30,000	0	
PE	0	0	0	0	355,610	0	355,610	0	
CST	0	0	0	0	0	0	0	1,880,983	
Total	0	0	0	0	365,610	20,000	385,610	1,880,983	

CITY: FORT LAUDERDALE OWNERSHIP: LOCAL Total Project Cost Estimate: 2,266,593

08 2020-14	Priority	JOHNSON STREET FROM NORTH 35TH AVENUE TO NORTH 14TH AVENUE - FM# 4455181					Funding Source: FEDERAL AND LOCAL		
		Type of Work: BIKE LANE/SIDEWALK		Proposed Study: N/A			Yes	Yes	Yes
2020 MPO CSLIP PRIORITY #14 LAP WITH CITY OF HOLLYWOOD SCOPE TO INCLUDE THE FOLLOWING: INSTALLATION OF PEDESTRIAN LEVELLIGHTING ON THE RIGHT SIDE, SHARROW BIKE FACILITY PAVEMENT MARKINGS IN THE TRAVEL LANES AND INSTALLATION OF SIDEWALK ANDRAILROAD CROSSING PEDESTRIAN GATE ON THE SOUTH SIDE. MTP Page # 5-30									
PE	0	0	0	5,000	0	0	5,000	0	
CST	0	0	0	0	0	1,751,608	1,751,608	453,335	
Total	0	0	0	5,000	0	1,751,608	1,756,608	453,335	

CITY: HOLLYWOOD OWNERSHIP: LOCAL Total Project Cost Estimate: 2,209,943

09 2020-15	Priority	NW 19TH STREET FROM NW 31ST AVENUE TO POWERLINE ROAD - FM# 4455191					Funding Source: FEDERAL AND LOCAL		
		Type of Work: MEDIAN MODIFICATION		Proposed Study: N/A			Yes	Yes	Yes
2020 MPO CSLIP PRIORITY #15 LAP W/BROWARD COUNTY SCOPE INCLUDES THE FOLLOWING: MILLING AND RESURFACING; CONSTRUCT RAISEDMEDIAN REFUGE ISLANDS IN THE CENTER OF A TWO WAY LEFT TURN; EXISTING CROSSWALK WILL BE REPLACED AND CURB RAMPS UPGRADED TO MEET ADA. MTP Page # 5-30									
PE	0	0	0	5,000	0	0	5,000	0	
CST	0	0	0	0	0	1,672,176	1,672,176	632,778	
Total	0	0	0	5,000	0	1,672,176	1,677,176	632,778	

CITY: FORT LAUDERDALE OWNERSHIP: COUNTY Total Project Cost Estimate: 2,309,954

Phase	<2021	2021	2022	2023	2024	2025	Amount Funded	Funding Needed
-------	-------	------	------	------	------	------	---------------	----------------

10 2020-16	Priority	CITYWIDE BUS SHELTERS - VARIOUS LOCATIONS - FM# 4455201					Funding Source: FEDERAL		
		Type of Work: PUBLIC TRANSPORTATION SHELTER					Proposed Study: N/A		
2020 MPO CSLIP PRIORITY #16 VARIOUS LOCATIONS: SUNSET STRIP,UNIVERSITY DRIVE AND OAKLAND PARK BLVD FLEX TO BROWARD MPO SCOPE INCLUDETHE FOLLOWING: RENOVATE 25 BUS SHELTERS. SHELTERS WILL INCLUDE BICYCLE RACKS									
MTP Page # 5-30									
CAP	0	0	0	0	0	1,694,250	1,694,250	0	
CST	0	0	0	0	0	0	0	748,562	
Total	0	0	0	0	0	1,694,250	1,694,250	748,562	

CITY: SUNRISE OWNERSHIP: STATE/COUNTY/LOCAL Total Project Cost Estimate: 2,442,812

11 2020-17	Priority	SW 30TH STREET FROM UNIVERSITY DRIVE TO COLLEGE AVENUE - FM# 4455211					Funding Source: FEDERAL		
		Type of Work: BIKE LANE/SIDEWALK					Proposed Study: N/A		
2020 MPO PRIORITY #17 ADMINISTERED BY FDOT ON BEHALF OF TOWN OF DAVIE SCOPE INCLUDE THE FOLLOWING: ADDITION OF BIKE LANESAND SHARROWS; WIDENING AT SOME SEGMENTS AS REQUIRED;CONSTRUCTION OF NEW SIDEWALKS AT BOTH SIDES OF THE CORRIDOR; LANE WIDTH REDUCTION; RELOCATION OF PEDESTRIAN FLASHING BEACONS.									
MTP Page # 5-30									
ENV	0	0	0	0	0	30,000	30,000	0	
PE	0	0	0	0	426,000	0	426,000	0	
CST	0	0	0	0	0	0	0	3,072,807	
Total	0	0	0	0	426,000	30,000	456,000	3,072,807	

CITY: DAVIE OWNERSHIP: LOCAL Total Project Cost Estimate: 3,528,807

12 2020-19	Priority	UTOPIA DRIVE FROM RIVIERA BOULEVARD TO PEMBROKE ROAD - FM# 4455241					Funding Source: FEDERAL		
		Type of Work: BIKE PATH/TRAIL					Proposed Study: N/A		
2020 MPO CSLIP PRIORITY #19 ADMINISTERED BY FDOT ON BEHALF OF CITY OF MIRAMAR SCOPE INCLUDE THE FOLLOWING: CONSTRUCTION OF6FT WIDE MULTI- USE ASPHALT PATH ON THE LEFT SIDE OF THE ROAD;TWO PEDESTRIAN POLES TO BE REPLACED.									
MTP Page # 5-30									
ENV	0	0	0	0	0	30,000	30,000	0	
PE	0	0	0	0	291,000	0	291,000	0	
CST	0	0	0	0	0	0	0	1,636,092	
Total	0	0	0	0	291,000	30,000	321,000	1,636,092	

CITY: MIRAMAR OWNERSHIP: LOCAL Total Project Cost Estimate: 1,957,092

Phase	<2021	2021	2022	2023	2024	2025	Amount Funded	Funding Needed
-------	-------	------	------	------	------	------	---------------	----------------

13 Priority 2020-20	NE 11TH AVENUE FROM NE 39TH STREET TO NE 32ND STREET - FM# 4455251 Type of Work: BIKE LANE/SIDEWALK Proposed Study: N/A						Funding Source: STATE AND FEDERAL AND LOCAL Yes Yes Yes Yes MTP Page # 5-30	
	2020 MPO CSLIP PRIORITY #20 LAP W/CITY OF OAKLAND PARK SCOPE INCLUDE THE FOLLOWING: ADDITION OF SIDEWALK ON THE RIGHT SIDE OF THE ROAD AND SHARROWS.							
PE	0	5,000	0	0	0	0	5,000	0
CST	0	0	0	424,144	0	0	424,144	419,055
Total	0	5,000	0	424,144	0	0	429,144	419,055
CITY: OAKLAND PARK				OWNERSHIP: LOCAL			Total Project Cost Estimate: 848,199	

14 Priority 2020-21	NORTH 22ND/SW 12TH AVENUE FROM SHERIDAN STREET TO STIRLING ROAD - FM# 4455261 Type of Work: BIKE LANE/SIDEWALK Proposed Study: N/A						Funding Source: FEDERAL Yes Yes Yes Yes MTP Page # 5-30	
	2020 MPO CSLIP PRIORITY #21 ADMINISTERED BY FDOT ON BEHALF OF CITY OF HOLLYWOOD AND DANIA BEACH SCOPE INCLUDE THE FOLLOWING:INSTALLATION OF PEDESTRIAN LEVEL LIGHTING AT BOTH SIDES; SHARROW BIKE FACILITY SIGNAGE AND TRAVEL LANE PAVEMENT MARKINGS;RAISED INTERSECTIONS TO PROVIDE FOR CROSSWALKS, DRAINAGE, AND DETECHABLE WARNINGS.							
ENV	0	0	0	0	0	30,000	30,000	0
PE	0	0	0	0	0	385,681	385,681	0
CST	0	0	0	0	0	0	0	2,473,369
Total	0	0	0	0	0	415,681	415,681	2,473,369
CITY: HOLLYWOOD				OWNERSHIP: LOCAL			Total Project Cost Estimate: 2,889,050	

Phase	<2021	2021	2022	2023	2024	2025	Amount Funded	Funding Needed
-------	-------	------	------	------	------	------	---------------	----------------

15 2020-22	Priority NORTHWEST 3RD STREET FROM NORTHWEST 6TH AVENUE TO DIXIE HIGHWAY - FM# 445271	Type of Work: BIKE LANE/SIDEWALK					Proposed Study: N/A			Funding Source: FEDERAL		
	2020 MPO CSLIP PRIORITY #22 ADMINISTERED BY FDOT ON BEHALF OF CITY OF HALLANDALE BEACH 52-02: LFA WITH CITY OF HALLANDALE BEACHSCOPE INCLUDE THE FOLLOWING: COMPLETE STREET IMPROVEMENTS SUCH AS BIKE LANES; ON-STREET PARKING, CURB AND GUTTER, PEDESTRIAN LIGHTING AT BOTH SIDES, WIDER SIDEWALK, INCLUDE MINI ROUNDABOUT AND RAISED INTERSECTION									Yes	Yes	Yes

MTP Page # 5-30

ENV	0	0	0	0	0	30,000	30,000	0
PE	0	0	0	0	0	421,000	421,000	0
CST	0	0	0	0	0	0	0	2,724,080
Total	0	0	0	0	0	451,000	451,000	2,724,080

CITY: HALLANDALE BEACH OWNERSHIP: LOCAL Total Project Cost Estimate: 3,175,080

16 2020-23	Priority CITY OF COCONUT CREEK VARIOUS LOCATIONS - FM# 445281	Type of Work: BIKE PATH/TRAIL					Proposed Study: N/A			Funding Source: FEDERAL		
	2020 MPO CSLIP PRIORITY #23 ADMINISTERED BY FDOT ON BEHALF OF CITY OF COCONUT CREEK VARIOUS LOCATIONS: JOHNSON ROAD FROM EAST OF US-441/SR-7 TO LYONS ROAD; PARK SCHOOL ROAD FROM LAKESIDE PARK TO JOHNSON ROAD 52-02: LFA WITH CITY OF COCONUT CREEKSCOPE INCLUDE THE FOLLOWING: SIDEWALK CONSTRUCTION ON THE LEFT SIDE OF JOHNSON RD. AND A MULTI-USE PATH ON THE LEFT SIDE OF PARK RD.									Yes	Yes	Yes

MTP Page # 5-30

ENV	0	0	0	0	0	30,000	30,000	0
PE	0	0	0	0	0	295,000	295,000	0
CST	0	0	0	0	0	0	0	533,638
Total	0	0	0	0	0	325,000	325,000	533,638

CITY: COCONUT CREEK OWNERSHIP: LOCAL Total Project Cost Estimate: 858,638

Phase	<2021	2021	2022	2023	2024	2025	Amount Funded	Funding Needed
-------	-------	------	------	------	------	------	------------------	-------------------

17 2020-24	Priority	CITY OF DEERFIELD BEACH VARIOUS LOCATIONS - FM# 445291					Funding Source: FEDERAL		
		Type of Work: BIKE LANE/SIDEWALK		Proposed Study: N/A			Yes	Yes	Yes

2020 MPO CSLIP PRIORITY #24 ADMINISTERED BY FDOT ON BEHALF OF CITY OF DEERFIELD BEACH VARIOUS LOCATIONS: NW 45TH STREET FROM NW 18TH TERRACE TO MILITARY TRAIL; CRYSTAL LAKE DR. FROM NW 45TH STREET TO MILITARY TRAIL. SCOPE INCLUDE THE FOLLOWING: SIDEWALKS ON BOTH SIDES AND SHARROWS; PEDESTRIAN LIGHTING T BOTH SIDES; ONE ROUNDABOUT AT CRYTAL LAKE DRIVE AND NW 45 STREET

MTP Page # 5-30

ENV	0	0	0	0	0	30,000	30,000	0
PE	0	0	0	0	0	228,000	228,000	0
CST	0	0	0	0	0	0	0	2,172,886
Total	0	0	0	0	0	258,000	258,000	2,172,886

CITY: DEERFIELD BEACH OWNERSHIP: LOCAL **Total Project Cost Estimate: 2,430,886**

18 2020-26	Priority	NORTHWEST 39TH STREET FROM CORAL RIDGE DRIVE TO NORTHWEST 110TH AVENUE - FM# 445311					Funding Source: FEDERAL		
		Type of Work: BIKE LANE/SIDEWALK		Proposed Study: N/A			Yes	Yes	Yes

2020 MPO CSLIP PRIORITY #26 ADMINISTERED BY FDOT ON BEHALF OF CITY OF CORAL SPRINGS 52-02: LFA WITH CITY OF CORAL SPRINGS SCOPEINCLUDE THE FOLLOWING: BIKE LANES AND SIDEWALK ON BOTH SIDES AND NEW VALLEY GUTTER

MTP Page # 5-30

ENV	0	0	0	0	0	30,000	30,000	0
PE	0	0	0	0	0	280,000	280,000	0
CST	0	0	0	0	0	0	0	1,567,958
Total	0	0	0	0	0	310,000	310,000	1,567,958

CITY: CORAL SPRINGS OWNERSHIP: LOCAL **Total Project Cost Estimate: 1,877,958**

19 2020-27	Priority	SADDLE CLUB ROAD FROM WEST OF LAKEVIEW DRIVE TO WESTON ROAD - FM# 445321					Funding Source: FEDERAL		
		Type of Work: BIKE LANE/SIDEWALK		Proposed Study: N/A			Yes	Yes	Yes

2020 MPO CSLIP PRIORITY #27 ADMINISTERED BY FDOT ON BEHALF OF CITY OF WESTON SCOPE INCLUDE THE FOLLOWING: ADDITIONAL BIKELANES AT BOTH SIDES AND LANE WIDTH REDUCTION

MTP Page # 5-30

ENV	0	0	0	0	0	30,000	30,000	0
PE	0	0	0	0	0	384,000	384,000	0
CST	0	0	0	0	0	0	0	1,563,459
Total	0	0	0	0	0	414,000	414,000	1,563,459

CITY: WESTON OWNERSHIP: LOCAL **Total Project Cost Estimate: 1,977,459**

State Funds	Federal Funds	Local Funds
State and Local Funds	State and Federal Funds	Federal and Local Funds

Phase	<2021	2021	2022	2023	2024	2025	Amount Funded	Funding Needed
-------	-------	------	------	------	------	------	---------------	----------------

20 2020-28	Priority	NORTHWEST 94TH AVENUE FROM NORTHWEST 44TH STREET TO 57TH STREET - FM# 4455331				Funding Source: FEDERAL			
		Type of Work: BIKE LANE/SIDEWALK				Proposed Study: N/A			

Yes
 Yes
 Yes
 Yes

MTP Page # 5-30

2020 MPO CSLIP PRIORITY #28 ADMINISTERED BY FDOT ON BEHALF OF CITY OF SUNRISE & TAMARAC SCOPE INCLUDE THE FOLLOWING: PRESERVEINSIDE TRAVEL LANE AND LEFT TURN LANE; RE-STRIPE OUTSIDE TRAVEL LANE TO BE A 6FT BIKE LANE WITH 3 FT BUTTER; LANE ELIMINATION;PROVIDE 500LF OF ROAD WIDENING; MILL AND RESURFACE.

ENV	0	0	0	0	0	30,000	30,000	0
PE	0	0	0	0	0	203,000	203,000	0
CST	0	0	0	0	0	0	0	1,325,903
Total	0	0	0	0	0	233,000	233,000	1,325,903

CITY: SUNRISE OWNERSHIP: LOCAL **Total Project Cost Estimate: 1,558,903**

21 2020-29	Priority	CITY OF HOLLYWOOD - VARIOUS LOCATIONS - FM# 4455341				Funding Source: FEDERAL			
		Type of Work: SIDEWALK				Proposed Study: N/A			

Yes
 Yes
 Yes
 Yes

MTP Page # 5-30

2020 MPO CSLIP PRIORITY #29 ADMINISTERED BY FDOT ON BEHALF OF CITY OF HOLLYWOOD SR7 SHERIDAN PARK AND HWY ACRES SIDEWALKPROJECT; PROVIDE SIDEWALK CONNECTIVITY AT APPROX. 24 LOCATIONS

ENV	0	0	0	0	0	30,000	30,000	0
PE	0	0	0	0	0	273,000	273,000	0
CST	0	0	0	0	0	0	0	1,005,296
Total	0	0	0	0	0	303,000	303,000	1,005,296

CITY: HOLLYWOOD OWNERSHIP: LOCAL **Total Project Cost Estimate: 1,308,296**

22 2020-30	Priority	SHERMAN CIRCLE FROM JODI LANE TO JODI LANE - FM# 4455351				Funding Source: FEDERAL			
		Type of Work: BIKE PATH/TRAIL				Proposed Study: N/A			

Yes
 Yes
 Yes
 Yes

MTP Page # 5-30

2020 MPO CSLIP PRIORITY #30 ADMINISTERED BY FDOT ON BEHALF OF CITY OF MIRAMAR SHERMAN CIRCLE BEGIN AND END AT THE SAME POINT.SCOPE INCLUDE THE FOLLOWING: 10FT WIDE MULTI-USE PATH ON THE INNER SIDE OF THE CIRCLE; WIDENING OFF EXISTING SIDEWALK;PEDESTRIAN LIGHTING

ENV	0	0	0	0	0	30,000	30,000	0
PE	0	0	0	0	0	343,000	343,000	0
CST	0	0	0	0	0	0	0	2,214,159
Total	0	0	0	0	0	373,000	373,000	2,214,159

CITY: MIRAMAR OWNERSHIP: LOCAL **Total Project Cost Estimate: 2,587,159**

Phase	<2021	2021	2022	2023	2024	2025	Amount Funded	Funding Needed
23 Priority New	NW 21st Avenue from NW 26th Street to Commercial Boulevard - FM#					Funding Source: FEDERAL		
	Type of Work: Bike Lanes, Sidewalk, Traffic Calming Proposed Study: N/A					Yes Yes Yes Yes MTP Page # 5-30		
Remove bidirectional turn lanes, install landscape medians, install irrigation sleeves, mill and resurface, new striping and associated signage, and apply green surface treatment to bike lanes.								
P.E., ENV, CEI, CST	0	0	0	0	0	0	0	2,249,521
Total	0	0	0	0	0	0	0	2,249,521
CITY: OAKLAND PARK			OWNERSHIP: COUNTY			Total Project Cost Estimate:		2,249,521
24 Priority New	SW 52nd Avenue from West Hallandale Beach Boulevard to County Line and South Park Road from West Hallandale Beach Boulevard to Pembroke Road - FM#					Funding Source: FEDERAL		
	Type of Work: Bike Lanes, Sidewalk, Resurfacing Proposed Study: N/A					Yes Yes Yes Yes MTP Page # 5-30		
New bike paths located along the east and west sides of SW 52nd Avenue and on the east side of S. Park Road, construction of missing sections of sidewalks, drainage adjustment for lost swale areas, and resurfacing to adjust road grades.								
P.E., ENV, CEI, CST	0	0	0	0	0	0	0	3,164,242
Total	0	0	0	0	0	0	0	3,164,242
CITY: PEMBROKE PARK			OWNERSHIP: LOCAL			Total Project Cost Estimate:		3,164,242
25 Priority New	City-wide Sidewalk and ADA - FM#					Funding Source: FEDERAL		
	Type of Work: Pedestrian Facilities Proposed Study: N/A					Yes Yes Yes Yes MTP Page # 5-30		
Indian Trace(north) from Town Center Blvd to Bonaventure Blvd, Royal Palm Blvd(south) from Weston Hills Dr to Town Center Blvd, Weston Rd(west) from Indian Trace to Royal Palm Blvd, and South Post Rd(north) from Bonaventure Blvd to west of Enterprise Ave. Construction of ADA pedestrian facilities at multiple locations throughout the City of Weston to improve pedestrian connectivity, safety and accessibility to existing transit stops.								
P.E., ENV, CEI, CST	0	0	0	0	0	0	0	4,759,236
Total	0	0	0	0	0	0	0	4,759,236
CITY: WESTON			OWNERSHIP: LOCAL			Total Project Cost Estimate:		4,759,236

Phase	<2021	2021	2022	2023	2024	2025	Amount Funded	Funding Needed
26 Priority New	SW 81ST AVE from C-14 Greenway South to McNab Road - FM# Type of Work: Bike/Ped Facilities Proposed Study: N/A					Funding Source: FEDERAL Yes Yes Yes Yes		
	Multiuse path along S.W. 81st Avenue from McNab Road to north of Southgate Boulevard to accommodate pedestrian and bicyclist to connect with the existing C-14 Greenway.							
P.E., ENV, CEI, CST	0	0	0	0	0	0	0	2,593,606
Total	0	0	0	0	0	0	0	2,593,606
CITY: NORTH LAUDERDALE				OWNERSHIP: LOCAL		Total Project Cost Estimate:		2,593,606
27 Priority New	Honey Hill RD from Flamingo Road to Red Road - FM# Type of Work: Bike/Ped Facilities Proposed Study: N/A					Funding Source: FEDERAL Yes Yes Yes Yes		
	Construct 8-foot wide shared asphalt path for bicycles and pedestrians and pedestrian lighting between Flamingo Road and Red Road. Miramar will have to construct the "Mobility Hub" portion of the project as a separate project if funded.							
P.E., ENV, CEI, CST	0	0	0	0	0	0	0	1,190,776
Total	0	0	0	0	0	0	0	1,190,776
CITY: MIRAMAR				OWNERSHIP: LOCAL		Total Project Cost Estimate:		1,190,776
28 Priority New	Plantation RD from East Acre Drive west to NW 68th Avenue - FM# Type of Work: Bicycle Lanes, MultiUse Path, Sidewalk Proposed Study: N/A					Funding Source: FEDERAL Yes Yes Yes Yes		
	City proposes to replace the existing 4' sidewalks with a single 8' wide Multiuse Recreational Trail along Plantation Road from East Acre Drive to NW 68th Avenue, maintaining a connection to Peters Elementary School.							
P.E., ENV, CEI, CST	0	0	0	0	0	0	0	817,809
Total	0	0	0	0	0	0	0	817,809
CITY: PLANTATION				OWNERSHIP: LOCAL		Total Project Cost Estimate:		817,809

Phase	<2021	2021	2022	2023	2024	2025	Amount Funded	Funding Needed
29 Priority New	NW 50TH ST from NW 94th Avenue to N. Pine Island Road & 94th Ave from W. Oakland Park Blvd to NW 44th St - FM#						Funding Source: FEDERAL	
	Type of Work: ADA, Bicycle Lanes, Drainage, Roadway Improvement Proposed Study: N/A						Yes Yes Yes Yes	
Widening, milling, resurfacing, striping, and signage of NW 50th Street from NW 94th Avenue to N. Pine Island Road to provide a 5ft wide bike lane on both sides of road. On 94th, preserve inside travel lane and left turn lanes; re-stripe outside travel lane to be a 6-ft bike lane with 3-ft buffer; construct traffic circle; mill and resurface.								
<i>MTP Page # 5-30</i>								
P.E., ENV, CEI, CST	0	0	0	0	0	0	0	1,902,685
Total	0	0	0	0	0	0	0	1,902,685
CITY: SUNRISE				OWNERSHIP: LOCAL			Total Project Cost Estimate: 1,902,685	
30 Priority New	Coral Hills Drive from Wiles Road to Sample Road - FM#						Funding Source: FEDERAL	
	Type of Work: ADA, Sidewalk Proposed Study: N/A						Yes Yes Yes Yes	
Replace asphalt sidewalk on the east side upgrade to ADA standards. Replace broken concrete sidewalk section and one curb. Construct new sidewalk on west side. Mill and re-surface roadway.								
<i>MTP Page # 5-30</i>								
P.E., ENV, CEI, CST	0	0	0	0	0	0	0	2,116,865
Total	0	0	0	0	0	0	0	2,116,865
CITY: CORAL SPRINGS				OWNERSHIP: LOCAL			Total Project Cost Estimate: 2,116,865	
31 Priority New	Pine Island Road from NW 79th St to McNab Rd & McNab Rd from Pine Island Rd to Westwood Blvd West - FM#						Funding Source: FEDERAL	
	Type of Work: Bicycle Lanes Proposed Study: N/A						Yes Yes Yes Yes	
On Pine Island Road, the north end begins at NW 79th Street; travels south to McNab Rd; travels west on McNab Road to Westwood Blvd West. The proposed project constructs the 7th and latest phase of the Tamarac citywide bikeway network: Pine Island Road at NW 79th Street; south to McNab Rd; west on McNab to Westwood Blvd West; 1.7miles								
<i>MTP Page # 5-30</i>								
P.E., ENV, CEI, CST	0	0	0	0	0	0	0	2,510,950
Total	0	0	0	0	0	0	0	2,510,950
CITY: TAMARAC				OWNERSHIP: COUNTY			Total Project Cost Estimate: 2,510,950	

Phase	<2021	2021	2022	2023	2024	2025	Amount Funded	Funding Needed
32 <small>Priority</small>	SE 4th Street from Dixie Highway to SE 2nd Ave, and SE 2nd Ave from SE 4th Street to 5th Street - FM#						Funding Source: FEDERAL	
<small>New</small>	Type of Work: ADA, Bicycle Lanes, Crosswalk, Drainage, Intersect			Proposed Study: N/A		Yes Yes Yes Yes		
City of Deerfield Beach 4th Street and SE 2nd Avenue Improvements.							MTP Page # 5-30	
P.E., ENV, CEI, CST	0	0	0	0	0	0	0	2,583,908
Total	0	0	0	0	0	0	0	2,583,908
CITY: DEERFIELD				OWNERSHIP: LOCAL		Total Project Cost Estimate:		2,583,908
33 <small>Priority</small>	SW 184 AVE from Miramar Parkway to Pembroke Road and Pembroke Rd from SW 184th Avenue to SW 172nd Avenue - FM#						Funding Source: FEDERAL	
<small>New</small>	Type of Work: Bicycle Lanes, Lighting pedestrian, MultiUse Path			Proposed Study: N/A		Yes Yes Yes Yes		
Buffered bike lanes along SW 184 Avenue (Miramar Pkwy to Pembroke Rd) and pedestrian lights. Widen concrete sidewalk on Pembroke Rd (184 ave to 172 ave) to 10' wide shared path and pedestrian lights							MTP Page # 5-30	
P.E., ENV, CEI, CST	0	0	0	0	0	0	0	2,727,743
Total	0	0	0	0	0	0	0	2,727,743
CITY: MIRAMAR				OWNERSHIP: LOCAL		Total Project Cost Estimate:		2,727,743

CSMP

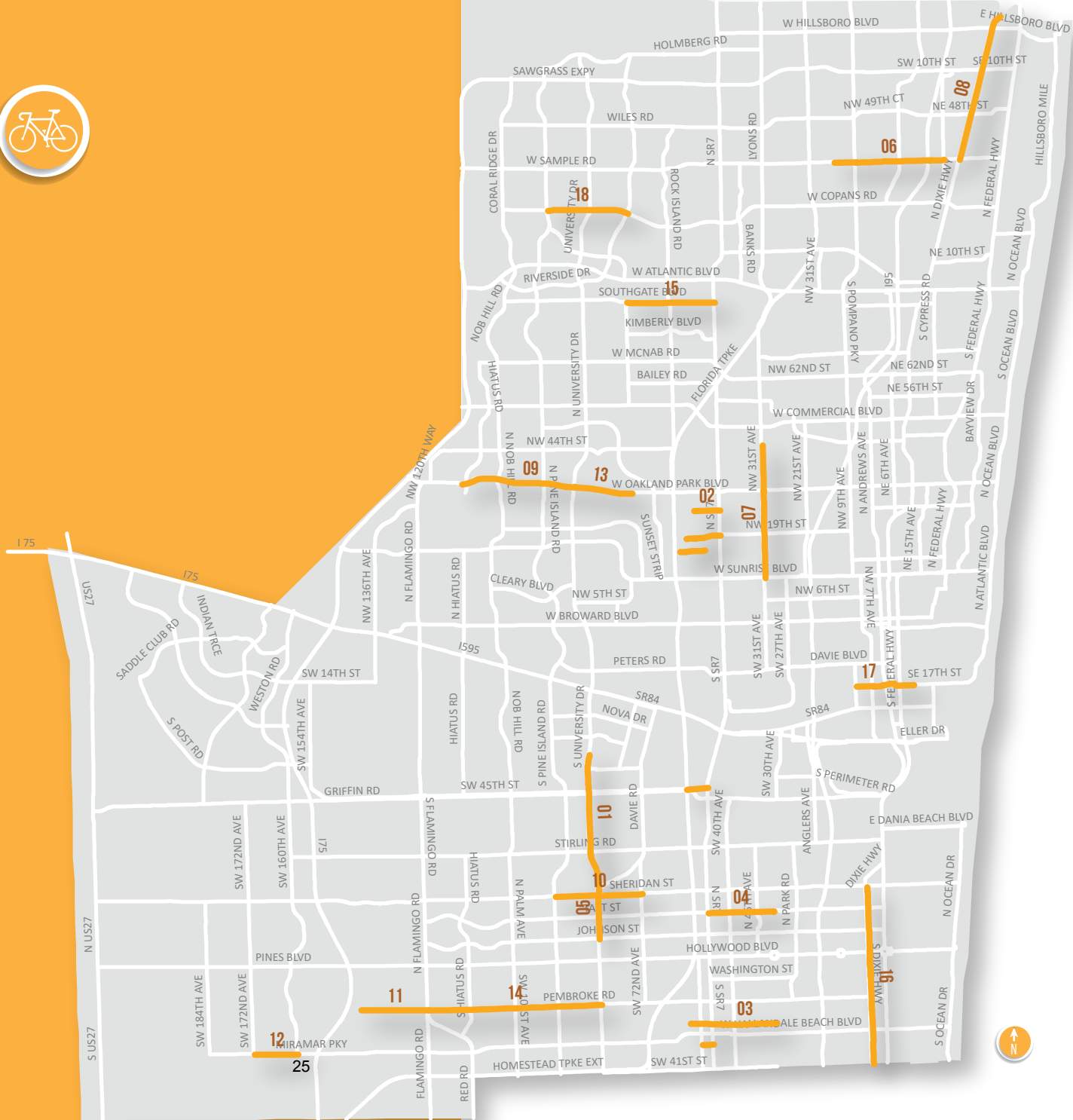
COMPLETE STREETS MASTER PLAN

PROGRAM



LEGEND:

 PRIORITIZED CSMP PROJECTS



CSMP

CSMP MPO Adopted Program Funding Goal 25%

Phase	<2021	2021	2022	2023	2024	2025	Amount Funded	Funding Needed	
01	SR-817/UNIVERSITY DRIVE FR S. OF SR-848/STIRLING RD TO N. OF SW 36 ST - FM# 4435972						Funding Source: STATE		
2020-03	Type of Work: BIKE LANE/SIDEWALK						Proposed Study: N/A		
2020 MPO CSMP PRIORITY #3 TOWN OF DAVIE BASED ON FEASIBILITY STUDY DONE UNDER 432066-3							MTP Page # 5-3		
PE	0	0	0	810,780	0	0	810,780	0	
CST	0	0	0	0	0	0	0	9,069,854	
Total	0	0	0	810,780	0	0	810,780	9,069,854	

CITY: DAVIE OWNERSHIP: STATE **Total Project Cost Estimate: 9,880,634**

02	SR-7/US-441 TRANSIT CORRIDOR IMPROVEMENTS GROUP/PRIORITY 7 - FM# 4295767						Funding Source: FEDERAL		
2020-05	Type of Work: BIKE LANE/SIDEWALK						Proposed Study: N/A		
2020 MPO CSMP PRIORITY #5 SR-7/US-441, TRANSIT CORRIDOR. OFF-SYSTEM ROADWAYS IMPROVEMENTS BASED ON SR-7 MULTIMODALIMPROVEMENTS CORRIDOR STUDY UNDER 429576-1. NW 26TH ST FROM NW 47TH AVE TO SR-7; NW 19TH ST FROM NW 49TH AVE TO SR-7;NW16TH ST FROM NW 47TH AVE TO SR-7. NW 26TH ST, MP 0 TO .595 CONSTRUCT BIKE LANES AND NARROW LANES SIDEWALK FILL IN GAPS. NW 19THST, MP 0 TO .204 CONSTRUCT SPARROWS AND WIDEN SIDEWALK AND FILL IN GAPS. NW 19TH ST, MP 0 TO .588 CONSTRUCT BIKE LANES ANDNARROW LANES,NW 16TH ST, MP 0 TO .580 CONSTRUCT BIKE LANES AND NARROW LANES							MTP Page # 5-3		
ENV	0	0	30,000	0	0	0	30,000	0	
PE	0	692,309	50,657	0	0	0	742,966	0	
CST	0	0	0	0	0	0	0	3,888,308	
Total	0	692,309	80,657	0	0	0	772,966	3,888,308	

CITY: LAUDERDALE LAKES/LAUDERHILL OWNERSHIP: LOCAL **Total Project Cost Estimate: 4,661,274**

Phase	<2021	2021	2022	2023	2024	2025	Amount Funded	Funding Needed
-------	-------	------	------	------	------	------	---------------	----------------

03	Priority	SR-7/US-441 TRANSIT CORRIDOR IMPROVEMENTS GROUP/PRIORITY 8 - FM# 4295768					Funding Source: FEDERAL		
		2020-06	Type of Work: BIKE LANE/SIDEWALK		Proposed Study: N/A		Yes	No	Yes
2020 MPO CSMP PRIORITY #6 SR-7/US-441, TRANSIT CORRIDOR. OFF-SYSTEM ROADWAYS IMPROVEMENTS BASED ON SR-7 MULTIMODALIMPROVEMENTS CORRIDOR STUDY UNDER 429576-1. SW 25TH ST FROM SW 64TH TO SR-7; SW 25TH ST FROM SW 62ND TO SW 40TH AVE;SW 33RDST FROM 62ND TO SR-7. SW 33RD ST,MP.794 TO 1.046 CONSTRUCT SIDEWALK ON NORTH SIDE OF ROAD; SW 25TH ST, MP .497 TO 1.003CONSTRUCT SIDEWALK ON SOUTH SIDE OF ROAD; SW 25TH ST, MP .754 TO 1.003 CONSTRUCT BIKE LANES BY WIDENING TO THE OUTSIDE; SW25TH ST (EAST OF SR7), MP 0 TO 1.464 CONSTRUCT BIKE LANES BY WIDENING TO THE OUTSIDE.									
ENV	0	0	20,000	0	0	0	20,000	0	
PE	0	649,868	47,551	0	0	0	697,419	0	
CST	0	0	0	0	0	0	0	3,463,224	
Total	0	649,868	67,551	0	0	0	717,419	3,463,224	
CITY: MIRAMAR/WEST PARK				OWNERSHIP: COUNTY/LOCAL			Total Project Cost Estimate: 4,180,643		

04	Priority	SR-7/US-441 TRANSIT CORRIDOR IMPROVEMENTS GROUP/PRIORITY 9 - FM# 4295769					Funding Source: STATE AND FEDERAL		
		2020-07	Type of Work: BIKE LANE/SIDEWALK		Proposed Study: N/A		Yes	No	Yes
2020 MPO CSMP PRIORITY #7 SR-7/US-441, TRANSIT CORRIDOR. OFF-SYSTEM ROADWAYS IMPROVEMENTS BASED ON SR-7 MULTIMODALIMPROVEMENTS CORRIDOR STUDY UNDER 429576-1 TAFT ST. FROM SR-7 TO 40TH AVE. & SW 45TH ST. FROM TURNPIKE TO SR-7									
ENV	0	0	0	0	0	30,000	30,000	0	
PE	0	0	0	449,542	32,893	0	482,435	0	
CST	0	0	0	0	0	0	0	1,960,593	
Total	0	0	0	449,542	32,893	30,000	512,435	1,960,593	
CITY: DAVIE/HOLLYWOOD				OWNERSHIP: LOCAL			Total Project Cost Estimate: 2,473,028		

State Funds	Federal Funds	Local Funds
State and Local Funds	State and Federal Funds	Federal and Local Funds

Phase	<2021	2021	2022	2023	2024	2025	Amount Funded	Funding Needed	
05	SR-817/UNIVERSITY DR. FROM N. OF JOHNSON STREET TO S. OF STIRLING RD - FM# 4435974						Funding Source: STATE		
2020-17	Type of Work: BIKE LANE/SIDEWALK			Proposed Study: N/A			Yes Yes Yes Yes		
BASED ON FEASIBILITY STUDY DONE UNDER 432066-3 SR-817/UNIVERSITY DRIVE 2019 MPO PRIORITY #4							MTP Page # 5-30		
ENV	0	0	0	10,000	0	0	10,000	0	
PE	0	1,121,000	0	0	0	0	1,121,000	0	
CST	0	0	0	0	0	0	0	12,083,932	
Total	0	1,121,000	0	10,000	0	0	1,131,000	12,083,932	
CITY: PEMBROKE PINES				OWNERSHIP: STATE			Total Project Cost Estimate: 13,214,932		
06	SAMPLE RD FROM BLOUNT RD TO NE 3 AVE - FM#						Funding Source: STATE		
2020-08	Type of Work: BIKE LANES/SIDEWALK			Proposed Study: N/A			Yes Yes Yes Yes		
BUFFERED BICYCLE LANES, WIDER PEDESTRIAN ZONE (SIDEWALKS), PEDESTRIAN LEVEL LIGHTING. FEASIBILITY STUDY IS INCLUDED IN THE PROJECT FM # 446377.1							MTP Page # 5-30		
PE	0	0	0	0	0	0	0	500,000	
CST	0	0	0	0	0	0	0	3,800,000	
Total	0	0	0	0	0	0	0	4,300,000	
CITY: DEERFIELD BEACH/POMPANO BEACH				OWNERSHIP: STATE			Total Project Cost Estimate: 4,300,000		
07	NW 31 AVE FROM SUNRISE BLVD TO NW 44 ST - FM#						Funding Source: FEDERAL		
2020-09	Type of Work: BIKE LANES/SIDEWALK			Proposed Study: N/A			No No Yes Yes		
ADD BICYCLE LANES, SEPARATED BICYCLE LANES AND CONTINUOUS FURNISHING ZONES COULD BE PROVIDED THRU LANE ELIMINATION, PEDESTRIAN LIGHTING							MTP Page # 5-30		
PE	0	0	0	0	0	0	0	650,000	
CST	0	0	0	0	0	0	0	6,000,000	
Total	0	0	0	0	0	0	0	6,650,000	
CITY: LAUDERDALE LAKES/LAUDERHILL				OWNERSHIP: COUNTY			Total Project Cost Estimate: 6,650,000		

Phase	<2021	2021	2022	2023	2024	2025	Amount Funded	Funding Needed		
08	DIXIE HWY FROM SAMPLE RD TO BROWARD/PALM BEACH COUNTY LINE - FM#						Funding Source: STATE			
2020-10	Type of Work: BIKE LANES/SIDEWALK			Proposed Study: N/A			Yes	Yes	Yes	Yes
FILL IN PEDESTRIAN ZONE (SIDEWALK GAP) ON EAST SIDE FROM NE 54 ST TO ATLANTIC BLVD, FURNISHING ZONE, BUFFERED BICYCLE LANES, PEDESTRIAN LEVEL LIGHTING, STAMP CONCRETE INTERSECTIONS, TRANSIT SHELTERS, OPPORTUNITIES FOR LANDSCAPING, REFUGE ISLANDS, TRAFFIC CALMING. FEASIBILITY STUDY IS INCLUDED IN THE PROJECT FM # 446377.1										
MTP Page # 5-30										
PE	0	0	0	0	0	0	0	840,000		
CST	0	0	0	0	0	0	0	6,700,000		
Total	0	0	0	0	0	0	0	7,540,000		
CITY: DEERFIELD BEACH/POMPANO BEACH				OWNERSHIP: STATE			Total Project Cost Estimate:		7,540,000	
09	OAKLAND PARK BLVD FROM HIATUS GREENWAY TO UNIVERSITY DR - FM#						Funding Source: FEDERAL			
2020-11	Type of Work: BIKE LANES/SIDEWALK			Proposed Study: N/A			Yes	Yes	Yes	Yes
BUFFERED/PROTECTED BICYCLE LANES, WIDER PEDESTRIAN ZONE (SIDEWALKS), ADDITIONAL LIGHTING, MULTI-USE PATH ON SOUTH SIDE, TRANSIT SHELTERS, C-13 CANAL 10' TRAIL. FDOT recommends administering as LAP.										
MTP Page # 5-30										
PE	0	0	0	0	0	0	0	800,000		
CST	0	0	0	0	0	0	0	6,300,000		
Total	0	0	0	0	0	0	0	7,100,000		
CITY: SUNRISE				OWNERSHIP: COUNTY			Total Project Cost Estimate:		7,100,000	
10	SHERIDAN ST FROM DOUGLAS RD TO UNIVERSITY DR - FM#						Funding Source: FEDERAL			
2020-12	Type of Work: BIKE LANES/SIDEWALK			Proposed Study: N/A			Yes	Yes	Yes	Yes
CONTINUOUS PEDESTRIAN ZONE (SIDEWALK GAPS) ON SOUTH SIDE, BUFFERED BICYCLE LANES, MULTIUSE PATH IN THE NORTH SIDE. FDOT recommends administering as LAP.										
MTP Page # 5-30										
PE	0	0	0	0	0	0	0	600,000		
CST	0	0	0	0	0	0	0	4,700,000		
Total	0	0	0	0	0	0	0	5,300,000		
CITY: COOPER CITY/PEMBROKE PINES				OWNERSHIP: LOCAL			Total Project Cost Estimate:		5,300,000	

Phase	<2021	2021	2022	2023	2024	2025	Amount Funded	Funding Needed	
11 Priority 2020-13	PEMBROKE RD FROM SW 145 AVE TO FLAMINGO RD - FM#						Funding Source: FEDERAL		
	Type of Work: BIKE LANES/SIDEWALK			Proposed Study: N/A			Yes	Yes	Yes Yes
PROTECTED BICYCLE LANES, WIDER PEDESTRIAN ZONE (SIDEWALKS), FURNISHING ZONE. FDOT recommends administering as LAP.							MTP Page # 5-30		
PE	0	0	0	0	0	0	0	500,000	
CST	0	0	0	0	0	0	0	3,600,000	
Total	0	0	0	0	0	0	0	4,100,000	
CITY: MIRAMAR/PEMBROKE PINES				OWNERSHIP: LOCAL			Total Project Cost Estimate: 4,100,000		
12 Priority 2020-14	MIRAMAR PKWY FROM SW 172 AVE TO DYKES RD - FM#						Funding Source: FEDERAL		
	Type of Work: BIKE LANES/SIDEWALK			Proposed Study: N/A			Yes	Yes	Yes Yes
SEPARATED BICYCLE LANES, FURNISHING ZONE, MID BLOCK CROSSWALKS AT BUS STOPS. FDOT recommends administering as LAP.							MTP Page # 5-30		
PE	0	0	0	0	0	0	0	500,000	
CST	0	0	0	0	0	0	0	3,600,000	
Total	0	0	0	0	0	0	0	4,100,000	
CITY: MIRAMAR				OWNERSHIP: LOCAL			Total Project Cost Estimate: 4,100,000		
13 Priority 2020-15	OAKLAND PARK BLVD*** FROM UNIVERSITY DR TO ROCK ISLAND ROAD*** - FM#						Funding Source: STATE		
	Type of Work: BIKE LANES/SIDEWALK			Proposed Study: N/A			Yes	Yes	Yes Yes
ENHANCED BUS CORRIDOR, BUFFERED BICYCLE LANES, WIDER PEDESTRIAN ZONE (SIDEWALKS), C-13 CANAL TRAIL. Project may be moved to a transit study managed by FDOT PM Khalilah French.							MTP Page # 5-30		
PE	0	0	0	0	0	0	0	840,000	
CST	0	0	0	0	0	0	0	6,700,000	
Total	0	0	0	0	0	0	0	7,540,000	
CITY: LAUDERHILL/SUNRISE				OWNERSHIP: STATE			Total Project Cost Estimate: 7,540,000		

Phase	<2021	2021	2022	2023	2024	2025	Amount Funded	Funding Needed	
14 Priority 2020-16	PEMBROKE RD FROM FLAMINGO RD TO DOUGLAS RD - FM#						Funding Source: FEDERAL		
	Type of Work: BIKE LANES/SIDEWALK			Proposed Study: Feasibility			Yes	Yes	Yes Yes
BUFFERED BICYCLE LANES, WIDER PEDESTRIAN ZONE (SIDEWALKS), PEMBROKE PINES/HOLLYWOOD TRAIL. FDOT recommends administering as LAP.									
PE	0	0	0	0	0	0	0	840,000	
CST	0	0	0	0	0	0	0	6,700,000	
Total	0	0	0	0	0	0	0	7,540,000	
CITY: MIRAMAR/PEMBROKE PINES				OWNERSHIP: LOCAL			Total Project Cost Estimate: 7,540,000		
15 Priority 2020-18	SOUTHGATE BLVD FROM SW 81 AVE TO SR 7/US 441 - FM#						Funding Source: FEDERAL		
	Type of Work: BIKE LANES/SIDEWALK			Proposed Study: N/A			Yes	Yes	Yes Yes
SEPARATED BICYCLE LANES (W OF SW 65TH AVE), BICYCLE LANES (E OF SW 65TH AVE), BIKE BOX (SR 7), CONTINUOUS PEDESTRIAN ZONE (SIDEWALK GAPS), FURNISHING ZONE. FDOT recommends administering as LAP.									
PE	0	0	0	0	0	0	0	800,000	
CST	0	0	0	0	0	0	0	6,600,000	
Total	0	0	0	0	0	0	0	7,400,000	
CITY: MARGATE/NORTH LAUDERDALE				OWNERSHIP: LOCAL			Total Project Cost Estimate: 7,400,000		
16 Priority 2020-19	SE/NE 1 AVE / S/N 21 AVE/ DIXIE HWY FROM COUNTY LINE RD TO SHERIDAN ST - FM#						Funding Source: FEDERAL		
	Type of Work: BIKE LANES/SIDEWALK			Proposed Study: N/A			Yes	No	Yes Yes
CONTINUOUS WIDER PEDESTRIAN ZONE (SIDEWALK GAPS), GREEN COLOR BUFFERED BICYCLE LANES, FURNISHING ZONE, LANDSCAPING OPPORTUNITIES, PEDESTRIAN LEVEL LIGHTING, TRANSIT SHELTERS WITH AMENITIES, ADDITIONAL PEDESTRIAN CROSSINGS, PEDESTRIAN COUNTDOWN SIGNALS, DRAINAGE IMPROVEMENTS**									
PE	0	0	0	0	0	0	0	900,000	
CST	0	0	0	0	0	0	0	7,200,000	
Total	0	0	0	0	0	0	0	8,100,000	
CITY: HALLANDALE BEACH/HOLLYWOOD				OWNERSHIP: COUNTY			Total Project Cost Estimate: 8,100,000		

Phase	<2021	2021	2022	2023	2024	2025	Amount Funded	Funding Needed
17 Priority	SW/SE 17 ST FROM SW 9 AVE TO CORDOVA - FM#						Funding Source: FEDERAL	
	2020-20	Type of Work: BIKE LANES/SIDEWALK				Proposed Study: N/A		Yes Yes Yes Yes
CONTINUOUS PEDESTRIAN ZONE (10' MULTIUSE PATH ON SOUTH SIDE) TO SW 4TH AVE, SHARROWS FROM 4TH AVE TO 9TH AVETRANSIT SHELTERS, PEDESTRIAN LEVEL LIGHTING, CHICANES, Project may be moved to a transit study managed by FDOT PM Khalilah French.								
PE	0	0	0	0	0	0	0	300,000
CST	0	0	0	0	0	0	0	2,200,000
Total	0	0	0	0	0	0	0	2,500,000
CITY: FORT LAUDERDALE				OWNERSHIP: STATE/LOCAL			Total Project Cost Estimate: 2,500,000	
18 Priority	ROYAL PALM BLVD FROM CORAL SPRINGS DR TO RIVERSIDE DR - FM#						Funding Source: FEDERAL	
	2020-21	Type of Work: BIKE LANES/SIDEWALK				Proposed Study: N/A		Yes Yes Yes Yes
BUFFERED BICYCLE LANES, FURNISHING ZONE, TRANSIT SHELTERS, LIGHTING ENHANCEMENTS. SEPARATED BICYCLE LANES (W OF SW 65TH AVE), BICYCLE LANES (E OF SW 65TH AVE), BIKE BOX (SR 7), CONTINUOUS PEDESTRIAN ZONE (SIDEWALK GAPS), FURNISHING ZONE. FDOT recommends administering as LAP.								
PE	0	0	0	0	0	0	0	500,000
CST	0	0	0	0	0	0	0	4,000,000
Total	0	0	0	0	0	0	0	4,500,000
CITY: CORAL SPRINGS				OWNERSHIP: LOCAL			Total Project Cost Estimate: 4,500,000	

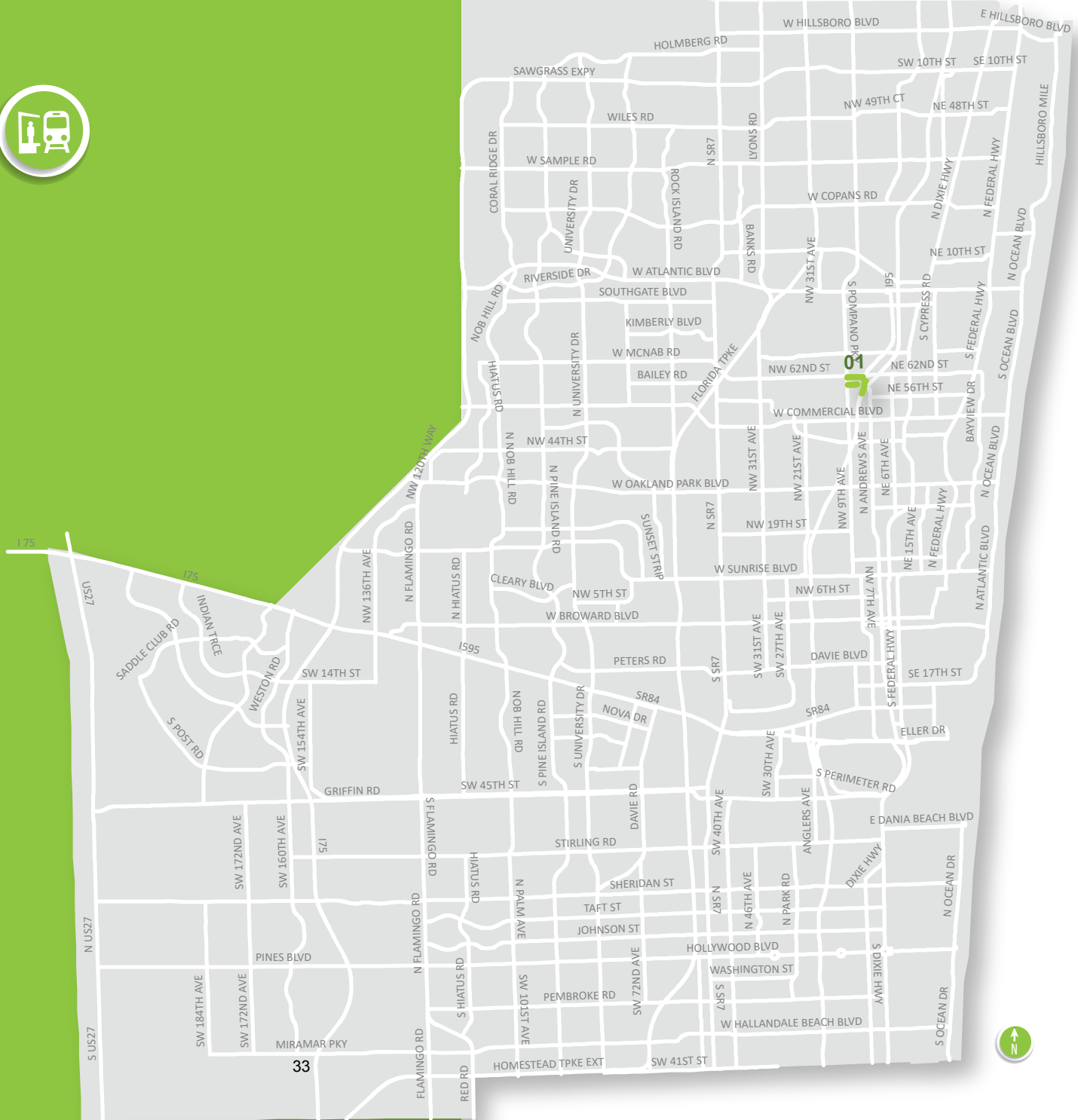
State Funds	Federal Funds	Local Funds
State and Local Funds	State and Federal Funds	Federal and Local Funds

MOBILITY HUBS PROGRAM



LEGEND:

PRIORITIZED MOBILITY HUBS PROJECTS



Mobility Hubs

Mobility Hubs MPO Adopted Program Funding Goal 10%

Phase	<2021	2021	2022	2023	2024	2025	Amount Funded	Funding Needed		
01	SR-9/I-95 MOBILITY HUB AT CYPRESS CREEK ROAD - FM# 4358085						Funding Source: STATE AND FEDERAL			
New	Type of Work: BIKE LANE/SIDEWALK			Proposed Study: N/A			Yes	Yes	Yes	Yes
WIDENING FOR ADDITIONAL TURN LANE AND BIKE LANES, SIDEWALK CONSTRUCTION, RESURFACING. WEST CYPRESS CREEK RD FROM POWERLINE RD TO W OF SFRC; NW 59TH CT; N ANDREWS WAY. NO RIGHT OF WAY REQUIRED SEE WP45 FOR ADDITIONAL COMMENTS PRIOR YEAR MPO PRIORITY. LANDSCAPING COST IS ESTIMATED BASED ON 10% CONSTRUCTION COST. PE PHASE IS PROPOSED TO BE INCLUDED IN 435808-1. The BMPO supports using SU funds for the landscaping phase.										
PE	268,074	0	0	0	0	0	268,074	0		
CST	0	0	0	0	2,721,343	0	2,721,343	0		
Landscaping	0	0	0	0	0	0	0	272,134		
Total	0	0	0	0	2,721,343	0	2,989,417	272,134		
CITY: FORT LAUDERDALE				OWNERSHIP: COUNTY/STATE			Total Project Cost Estimate:		3,261,551	

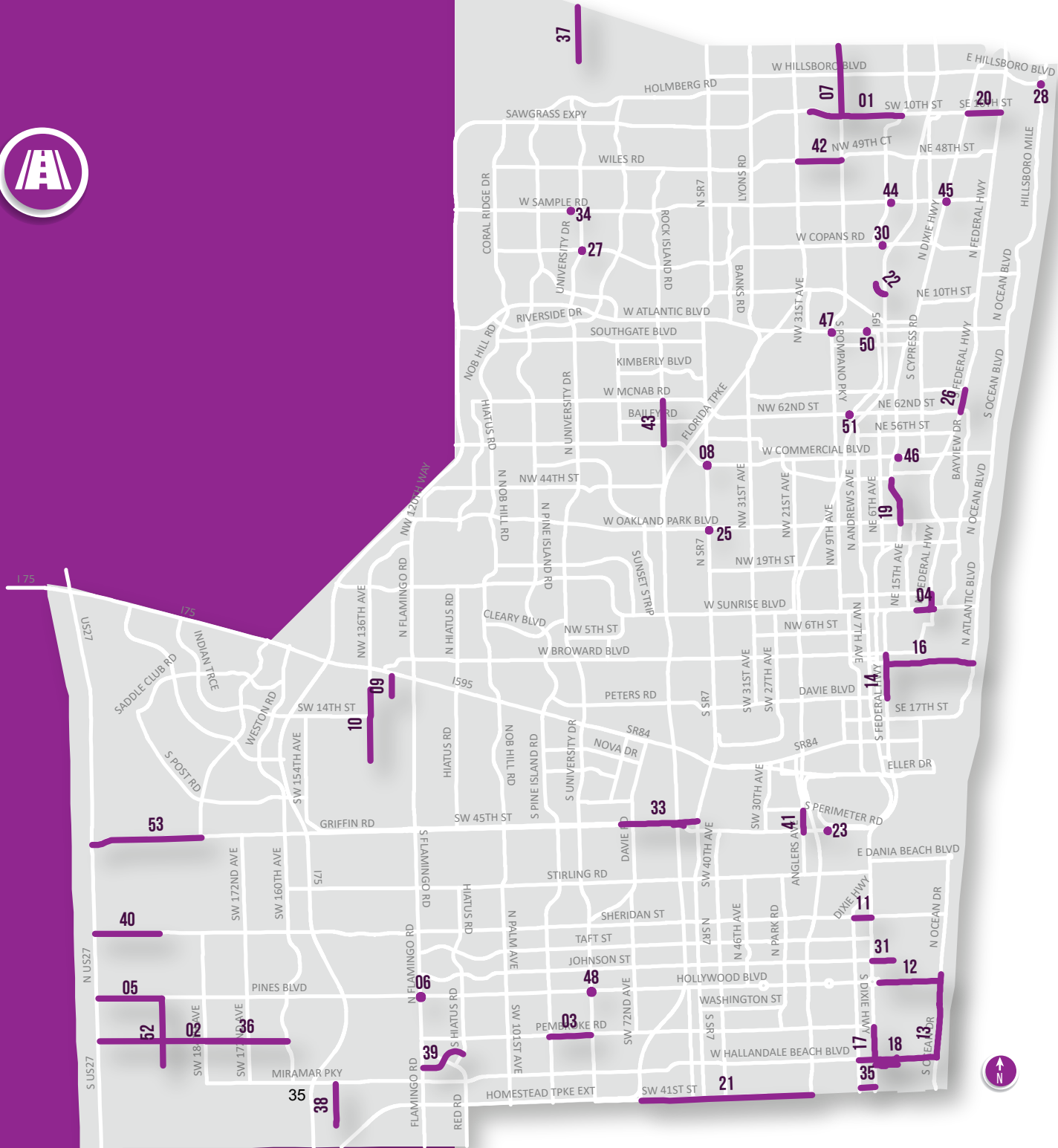
MTP Page # 5-3

ROADWAY PROGRAM



LEGEND:

 PRIORITIZED ROADWAY PROJECTS



Roadway Roadway MPO Adopted Program Funding Goal 20%

Phase	<2021	2021	2022	2023	2024	2025	Amount Funded	Funding Needed
-------	-------	------	------	------	------	------	---------------	----------------

01	Priority	SR-869/SW 10 ST FROM W OF SR-845/POWERLINE RD TO WEST OF MILITARY TRL - FM# 4398911					Funding Source: STATE		
		2020-01	Type of Work: ADD LANES		Proposed Study: N/A		Yes Yes Yes Yes		
2020 MPO HIGHWAY PRIORITY #1 PHASE 22-04= VE WORKSHOP PHASE C2-10 = CONTAMINATION PHASE 32-01 = DESIGN; SEQUENCES 02-06 = STIPENDS PHASE 62-02= POST DESIGN PHASE 22-01= PRE-WORK PHASE 22-02= PD/E & ADVANCED ENGINEERING ANALYSIS									
PE	8,011,531	0	0	0	2,875,000	0	10,886,531	0	
ROW	16,911,393	8,528,760	0	0	0	0	25,440,153	0	
CST	0	0	0	8,000,000	385,063,495	333,000	393,396,495	333,000	
Total	24,922,924	8,528,760	0	8,000,000	387,938,495	333,000	429,723,179	333,000	

CITY: DEERFIELD BEACH MTP REFERENCE #: OWNERSHIP: STATE Total Project Cost Estimate: 430,056,179

02	Priority	PEMBROKE ROAD FROM US-27 TO SW 160TH AVE - FM# 4419561					Funding Source: STATE AND FEDERAL		
		2020-03	Type of Work: Widen and new construction.		Proposed Study: N/A		Yes Yes Yes Yes		
2020 MPO HIGHWAY PRIORITY # 3, 42 ALSO INCLUDES SW 196 AVE FROM MIRAMAR PARKWAY TO PEMBROKE RD FEASIBILITY STUDY 22-01 -FEASIBILITY STUDY, 22-02 = PD&E PREWORK R/W NEEDED									
PDE	0	0	0	0	675,000	3,000,000	3,675,000	0	
CST	0	0	0	0	0	0	0	25,287,426	
Total	0	0	0	0	675,000	3,000,000	3,675,000	25,287,426	

CITY: MIRAMAR/PEMBROKE PINES MTP REFERENCE #: OWNERSHIP: LOCAL Total Project Cost Estimate: 28,962,426

03	Priority	PEMBROKE ROAD FROM DOUGLAS ROAD (SW 89 AV) TO SR-817/UNIVERSITY DRIVE - FM# 4369801					Funding Source: STATE AND FEDERAL		
		2020-04	Type of Work: Widen 4 to 6 Lanes		Proposed Study: N/A		Yes Yes Yes Yes		
2020 MPO HIGHWAY PRIORITY #4 WIDEN 4 TO 6 LANES RIGHT OF WAY NEEDED 22-01 TRAFFIC PROJECTIONS, SURVEYS, EDTM ACTIVITIES									
PDE	1,798,043	0	0	0	0	0	1,798,043	0	
PE	782,047	0	0	0	0	0	782,047	0	
ROW	0	0	0	0	0	13,732,133	13,732,133	0	
CST	0	0	0	0	0	0	0	3,734,987	
Total	2,580,090	0	0	0	0	13,732,133	16,312,223	3,734,987	

CITY: MIRAMAR/PEMBROKE PINES MTP REFERENCE #: OWNERSHIP: LOCAL Total Project Cost Estimate: 20,047,210

State Funds	Federal Funds	Local Funds
State and Local Funds	State and Federal Funds	Federal and Local Funds

Phase	<2021	2021	2022	2023	2024	2025	Amount Funded	Funding Needed	
04	SR-5/US-1 @ SR-838/SUNRISE BOULEVARD - FM# 4419551						Funding Source: STATE		
2020-06	Type of Work: PD&E/EMO STUDY						Proposed Study: N/A		
2020 MPO PRIORITY #6 @ GATEWAY THEATER STATE FUNDS ONLY RIGHT OF WAY IS REQUIRED							MTP Page # 5-4	MTP Timeframe: 2021-2025	
PDE	0	0	500,000	1,500,000	0	0	2,000,000	0	
PE	0	0	0	0	0	0	0	4,000,000	
CST	0	0	0	0	0	0	0	19,439,122	
Total	0	0	500,000	1,500,000	0	0	2,000,000	23,439,122	
CITY: FORT LAUDERDALE			MTP REFERENCE #:		OWNERSHIP: STATE		Total Project Cost Estimate: 25,439,122		
05	SR-820/PINES BLVD FROM US-27 TO NW 196TH AVE - FM# 4449771						Funding Source: STATE		
2020-07	Type of Work: Widen from 4 to 6 lanes						Proposed Study: N/A		
2020 MPO PRIORITY #7 4L TO 6L; STATE FUNDS ONLY NO R/W ACQUISITION REQUIRED							MTP Page # 5-4	MTP Timeframe: 2021-2025	
PDE	0	0	0	700,000	2,000,000	0	2,700,000	0	
PE	0	0	0	0	0	849,882	849,882	1,160,118	
CST	0	0	0	0	0	0	0	8,481,698	
Total	0	0	0	700,000	2,000,000	849,882	3,549,882	9,641,816	
CITY: PEMBROKE PINES			MTP REFERENCE #:		OWNERSHIP: STATE		Total Project Cost Estimate: 13,191,698		
06	SR-820/Pines Blvd. @ Flamingo Rd. – Center Turn Overpass - FM# 4080462						Funding Source: STATE		
2020-08	Type of Work: Intersection improvements						Proposed Study: N/A		
2020 MPO PRIORITY #8 RIGHT OF WAY NOT NEEDED. Broward MPO sponsored							MTP Page # 5-4	MTP Timeframe: 2021-2025	
PDE	0	0	0	610,000	2,000,000	0	2,610,000	0	
PE	0	0	0	0	0	0	0	5,280,000	
PE	0	0	0	0	0	2,010,000	2,010,000	5,280,000	
ROW	0	0	0	0	0	0	0	45,000,000	
CST	0	0	0	0	0	0	0	45,000,000	
Total	0	0	0	610,000	2,000,000	2,010,000	4,620,000	95,280,000	
CITY: PEMBROKE PINES			MTP REFERENCE #:		OWNERSHIP: STATE		Total Project Cost Estimate: 99,900,000		

State Funds	Federal Funds	Local Funds
State and Local Funds	State and Federal Funds	Federal and Local Funds

Phase	<2021	2021	2022	2023	2024	2025	Amount Funded	Funding Needed	
07	SR-845/POWERLINE RD FROM SW 10TH ST TO BROWARD/PALM BEACH COUNTY LINE - FM# 4463781						Funding Source: STATE		
2020-09	Type of Work: Widen from 4 to 6 Lanes			Proposed Study: N/A			Yes Yes Yes Yes		
2020 MPO PRIORITY# 9 WIDEN FROM 4 TO 6 LANES. Broward MPO sponsored.							MTP Page # 5-11 MTP Timeframe: 2021-2025		
PDE	0	0	0	0	0	500,000	500,000	0	
PE	0	0	0	0	0	0	0	2,076,332	
ROW	0	0	0	0	0	0	0	11,710,602	
CST	0	0	0	0	0	0	0	11,710,602	
Total	0	0	0	0	0	500,000	500,000	25,497,536	
CITY: DEERFIELD BEACH		MTP REFERENCE #:		OWNERSHIP: STATE		Total Project Cost Estimate: 25,997,536			
08	SR-7/US-441 @ SR-870/COMMERCIAL BLVD - FM# 4463801						Funding Source: STATE		
2020-13	Type of Work: Intersection Improvement			Proposed Study: N/A			Yes Yes Yes Yes		
2020 MPO PRIORITY# 13. Construction of Urban Interchange to alleviate congestion and improve safety. City of Tamarac sponsored.							MTP Page # 5-17 MTP Timeframe: 2031-2035		
PDE	0	0	0	0	0	600,000	600,000	31,960,000	
PE	0	0	0	0	0	0	0	148,000,000	
CST	0	0	0	0	0	0	0	148,000,000	
Total	0	0	0	0	0	600,000	600,000	327,960,000	
CITY: TAMARAC		MTP REFERENCE #:		OWNERSHIP: STATE		Total Project Cost Estimate: 328,560,000			
09	SW 130TH AVE FROM SW 8TH ST TO SR-84 - FM# 4463811						Funding Source: FEDERAL		
2020-16	Type of Work: Add Turn Lane			Proposed Study: N/A			Yes Yes Yes Yes		
2020 MPO HIGHWAY PRIORITY# 16. Currently a center turn lane exists to the south and the Town would like to extend this center turn lane to SR 84. Project 1 of 2 from West Davie Roadway Improvements. Right of way may be required. Town of Davie sponsored.							MTP Page # 5-16 MTP Timeframe: 2026-2030		
PDE	0	0	0	0	0	500,000	500,000	0	
PE	0	0	0	0	0	0	0	686,680	
CST	0	0	0	0	0	0	0	5,394,800	
Total	0	0	0	0	0	500,000	500,000	6,081,480	
CITY: DAVIE		MTP REFERENCE #:		OWNERSHIP: LOCAL		Total Project Cost Estimate: 6,581,480			

Phase	<2021	2021	2022	2023	2024	2025	Amount Funded	Funding Needed	
10 Priority	SW 136TH AVE FROM SW 26TH ST TO SW 6TH CT - FM# 4463812						Funding Source: FEDERAL		
2020-16	Type of Work: Widen and reconfigure intersections				Proposed Study: N/A		Yes	Yes	Yes Yes
2020 MPO PRIORITY# 16 WIDEN 2 TO 4 LANES. Add landscape medians; expand sidewalks; add bike lanes; reconfigure roundabout at SW 14 Street. Construct roundabout at SW 26th Street and SW 136 th avenue. Project 2 of 2 from West Davie Roadway Improvements. Town of Davie sponsored.							MTP Page # 5-16	MTP Timeframe: 2026-2030	
PDE	0	0	0	0	0	500,000	500,000	0	
PE	0	0	0	0	0	0	0	2,405,320	
CST	0	0	0	0	0	0	0	13,206,000	
Total	0	0	0	0	0	500,000	500,000	15,611,320	
CITY: DAVIE		MTP REFERENCE #:		OWNERSHIP: LOCAL		Total Project Cost Estimate: 16,111,320			
11 Priority	SR-822/Sheridan St from US-1 to Dixie Hwy - FM#						Funding Source: STATE		
2020-10	Type of Work: Widening				Proposed Study: PD&E		Yes	Yes	Yes Yes
Widen from 4 to 6 lanes. Project Sponsor: Broward MPO							MTP Page # 5-11	MTP Timeframe: 2025	
PE	0	0	0	0	0	0	0	941,147	
ROW	0	0	0	0	0	0	0	38,332,475	
CST	0	0	0	0	0	0	0	4,277,940	
Total	0	0	0	0	0	0	0	43,551,562	
CITY: DANIA BEACH/HOLLYWOOD		MTP REFERENCE #: 6		OWNERSHIP: STATE		Total Project Cost Estimate: 43,551,562			
12 New	Hollywood Blvd from US-1 to SR-A1A - FM#						Funding Source: STATE		
	Type of Work: Resiliency Study				Proposed Study: Resiliency		Yes	N/A	Yes Yes
Conduct study to determine resiliency improvements. Project Sponsor: Broward MPO							MTP Page # 5-13	MTP Timeframe: 2026-2030	
PE	0	0	0	0	0	0	0	1,500,000	
Total	0	0	0	0	0	0	0	1,500,000	
CITY: HOLLYWOOD		MTP REFERENCE #: 17		OWNERSHIP: STATE		Total Project Cost Estimate: 1,500,000			

Phase	<2021	2021	2022	2023	2024	2025	Amount Funded	Funding Needed	
13	SR-A1A from South of Arizona St to Hallandale Beach Blvd - FM#						Funding Source: STATE		
Priority	Type of Work: Resiliency Study						Proposed Study: Resiliency		
New	Conduct study to determine resiliency improvements. Project Sponsor: Broward MPO						Yes N/A Yes Yes		
	MTP Page # 5-13						MTP Timeframe: 2026-2030		
PE	0	0	0	0	0	0	0	1,500,000	
Total	0	0	0	0	0	0	0	1,500,000	
CITY: HALLANDALE BEACH			MTP REFERENCE #: 18		OWNERSHIP: STATE		Total Project Cost Estimate: 1,500,000		
14	US-1/SR-5 from Las Olas Blvd to Davie Blvd - FM#						Funding Source: STATE		
Priority	Type of Work: Resiliency Study						Proposed Study: Resiliency		
New	Conduct study to determine resiliency improvements. Project Sponsor: Broward MPO						Yes N/A Yes Yes		
	MTP Page # 5-13						MTP Timeframe: 2026-2030		
PE	0	0	0	0	0	0	0	1,500,000	
Total	0	0	0	0	0	0	0	1,500,000	
CITY: FORT LAUDERDALE			MTP REFERENCE #: 19		OWNERSHIP: STATE		Total Project Cost Estimate: 1,500,000		
15	US-1 from Broward Blvd to Las Olas Blvd - FM#						Funding Source: STATE		
Priority	Type of Work: Resiliency Study						Proposed Study: Resiliency		
New	Conduct study to determine resiliency improvements. Project Sponsor: Broward MPO						Yes N/A Yes Yes		
	MTP Page # 5-13						MTP Timeframe: 2026-2030		
PE	0	0	0	0	0	0	0	750,000	
Total	0	0	0	0	0	0	0	750,000	
CITY: FORT LAUDERDALE			MTP REFERENCE #: 20		OWNERSHIP: STATE		Total Project Cost Estimate: 750,000		
16	Las Olas Blvd. from US-1 to SR-A1A - FM#						Funding Source: STATE		
Priority	Type of Work: Resiliency Study						Proposed Study: Resiliency		
New	Conduct study to determine resiliency improvements. Project Sponsor: Broward MPO						Yes N/A Yes Yes		
	MTP Page # 5-13						MTP Timeframe: 2026-2030		
PE	0	0	0	0	0	0	0	1,500,000	
Total	0	0	0	0	0	0	0	1,500,000	
CITY: FORT LAUDERDALE			MTP REFERENCE #: 21		OWNERSHIP: STATE/LOCAL		Total Project Cost Estimate: 1,500,000		

Phase	<2021	2021	2022	2023	2024	2025	Amount Funded	Funding Needed		
17 <small>Priority</small>	US-1 from Pembroke Rd to Hallandale Beach Blvd - FM#						Funding Source: STATE			
<small>New</small>	Type of Work: Resiliency Study			Proposed Study: Resiliency			Yes	N/A	Yes	Yes
Conduct study to determine resiliency improvements. Project Sponsor: Broward MPO										
PE	0	0	0	0	0	0	0	1,000,000		
Total	0	0	0	0	0	0	0	1,000,000		
CITY: HALLANDALE BEACH			MTP REFERENCE #: 22		OWNERSHIP: STATE		Total Project Cost Estimate: 1,000,000			
18 <small>Priority</small>	Hallandale Beach Blvd From US-1 to SR-A1A - FM#						Funding Source: STATE			
<small>New</small>	Type of Work: Resiliency Study			Proposed Study: Resiliency			Yes	N/A	Yes	Yes
Conduct study to determine resiliency improvements. Project Sponsor: Broward MPO										
PE	0	0	0	0	0	0	0	1,500,000		
Total	0	0	0	0	0	0	0	1,500,000		
CITY: HALLANDALE BEACH			MTP REFERENCE #: 23		OWNERSHIP: STATE		Total Project Cost Estimate: 1,500,000			
19 <small>Priority</small>	Dixie Hwy Corridor from Oakland Park Blvd to Prospect Rd - FM#						Funding Source: STATE			
<small>2020-20</small>	Type of Work: Bike/Ped			Proposed Study: Feasibility			Yes	Yes	Yes	Yes
Conduct multimodal feasibility study. Corridor upgrades to enhance safety and convenience for walkers, cyclists, motorists and those using public transit. Providing for enhanced pedestrian crossing across Dixie Highway and the FEC, while adding multi-modal forms of transportation. Project Sponsor: City of Oakland Park										
PE	0	0	0	0	0	0	0	600,000		
Total	0	0	0	0	0	0	0	600,000		
CITY: OAKLAND PARK			MTP REFERENCE #: 24		OWNERSHIP: STATE		Total Project Cost Estimate: 600,000			
20 <small>Priority</small>	SE 10th St from Dixie Hwy to US-1 - FM#						Funding Source: STATE			
<small>New</small>	Type of Work: Feasibility Study			Proposed Study: Feasibility			Yes	Yes	Yes	Yes
Conduct multimodal feasibility study. The City is concerned that once 10th street improvements are completed, additional trips will occur eastbound and the current roadway cannot handle this increase at this time. Project Sponsor: City of Deerfield Beach										
PE	0	0	0	0	0	0	0	750,000		
Total	0	0	0	0	0	0	0	750,000		
CITY: DEERFIELD BEACH			MTP REFERENCE #: 25		OWNERSHIP: STATE/LOCAL		Total Project Cost Estimate: 750,000			

Phase	<2021	2021	2022	2023	2024	2025	Amount Funded	Funding Needed	
21 Priority	County Line Rd/HEFT Extension from I-95 to Florida's Turnpike - FM#						Funding Source: STATE		
2020-40	Type of Work: Feasibility study			Proposed Study: Feasibility			Yes N/A Yes Yes		
Conduct multimodal feasibility study. Coordination will be needed with FDOT District 6. Project Sponsor: Broward MPO							MTP Page # 5-14	MTP Timeframe: 2026-2030	
PE	0	0	0	0	0	0	0	1,500,000	
Total	0	0	0	0	0	0	0	1,500,000	
CITY: MIRAMAR/PEMBROKE PARK/WEST PARK		MTP REFERENCE #: 26		OWNERSHIP: STATE		Total Project Cost Estimate:		1,500,000	
22 Priority	Pompano Beach FEC-SFRC connection - FM#						Funding Source: STATE		
2020-11	Type of Work: New track connection			Proposed Study: PD&E			Yes Yes Yes Yes		
Construct track connection between FEC rail corridor and SFRC at Pompano Beach. Project requires buy in from FEC & CSX. FM# 417031-9. Project Sponsor: SFRTA							MTP Page # 5-14	MTP Timeframe: 2026-2030	
PE	0	0	0	0	0	0	0	7,700,000	
ROW	0	0	0	0	0	0	0	35,000,000	
CST	0	0	0	0	0	0	0	35,000,000	
Total	0	0	0	0	0	0	0	77,700,000	
CITY: POMPANO BEACH		MTP REFERENCE #: 27		OWNERSHIP: STATE		Total Project Cost Estimate:		77,700,000	
23 Priority	Griffin Rd @ Old Griffin Rd intersection - FM#						Funding Source: STATE		
2020-12	Type of Work: Intersection Improvement			Proposed Study: N/A			Yes Yes Yes Yes		
Construct interim reconfiguration of north approach to intersection. Project Sponsor: FDOT							MTP Page # 5-14	MTP Timeframe: 2026-2030	
PE	0	0	0	0	0	0	0	440,000	
ROW	0	0	0	0	0	0	0	2,000,000	
CST	0	0	0	0	0	0	0	2,000,000	
Total	0	0	0	0	0	0	0	4,440,000	
CITY: DANIA BEACH		MTP REFERENCE #: 28		OWNERSHIP: STATE		Total Project Cost Estimate:		4,440,000	

Phase	<2021	2021	2022	2023	2024	2025	Amount Funded	Funding Needed		
24	Florida's Turnpike Interchange @ Griffin Rd/Orange Dr - FM#						Funding Source: STATE			
New	Type of Work: Interchange Improvements			Proposed Study: N/A			Yes	Yes	Yes	Yes
Construct improvements to interchange. The Orange Drive, Griffin Road, Turnpike interchange is congested and confusing. Project goes with FM# 406095-4. Project Sponsor: Town of Davie										
PE	0	0	0	0	0	0	0	9,240,000		
ROW	0	0	0	0	0	0	0	0		
CST	0	0	0	0	0	0	0	42,000,000		
Total	0	0	0	0	0	0	0	51,240,000		
CITY: DAVIE			MTP REFERENCE #: 29		OWNERSHIP: STATE		Total Project Cost Estimate: 51,240,000			
25	SR-810/Oakland Park Blvd @ SR-7/US-441 - FM#						Funding Source: STATE			
2020-15	Type of Work: Intersection Improvement			Proposed Study: PD&E			Yes	Yes	Yes	Yes
Construct center turn overpass. Project is associated with TSM&O/Safety Project "SR-810/Oakland Park Blvd @ SR-7/US-441". Project Sponsor: Broward MPO										
PE	0	0	0	0	0	0	0	9,900,000		
ROW	0	0	0	0	0	0	0	45,000,000		
CST	0	0	0	0	0	0	0	45,000,000		
Total	0	0	0	0	0	0	0	99,900,000		
CITY: LAUDERDALE LAKES			MTP REFERENCE #: 30		OWNERSHIP: STATE		Total Project Cost Estimate: 99,900,000			
26	US-1/SR-5 from McNab Rd/15th St to Cypress Creek Rd/62nd St - FM#						Funding Source: STATE			
2020-18	Type of Work: Add eastbound left turn lane			Proposed Study: N/A			Yes	No	Yes	No
Add eastbound left-turn lane. Project Sponsor: FDOT										
PE	0	0	0	0	0	0	0	441,980		
ROW	0	0	0	0	0	0	0	0		
CST	0	0	0	0	0	0	0	2,009,000		
Total	0	0	0	0	0	0	0	2,450,980		
CITY: FORT LAUDERDALE			MTP REFERENCE #: 31		OWNERSHIP: STATE		Total Project Cost Estimate: 2,450,980			

Phase	<2021	2021	2022	2023	2024	2025	Amount Funded	Funding Needed
-------	-------	------	------	------	------	------	---------------	----------------

27 New	Priority	University Dr @ Royal Palm Blvd - FM#					Funding Source: STATE			
		Type of Work: Add dual left turn lanes					Proposed Study: PD&E			
Add dual left-turn lanes on University Dr southbound at Royal Palm Blvd. Environmental study may be needed. Project Sponsor: City of Coral Springs							Yes	Yes	Yes	Yes
MTP Page # 5-14							MTP Timeframe: 2026-2030			
PE	0	0	0	0	0	0	0	102,666		
ROW	0	0	0	0	0	0	0	466,662		
CST	0	0	0	0	0	0	0	466,662		
Total	0	0	0	0	0	0	0	1,035,990		

CITY: CORAL SPRINGS MTP REFERENCE #: 32 OWNERSHIP: STATE Total Project Cost Estimate: 1,035,990

28 2020-21	Priority	SR-A1A @ Hillsboro Blvd - FM#					Funding Source: STATE			
		Type of Work: Intersection reconfiguration					Proposed Study: PD&E			
Reconfigure intersection; additional EB to NB turn lane, allow throughmovement EB to WB, and extend left-turn lane NB to WB. Traffic headed East, West, and North are congested, and cars often require two or three light-cycles to pass through the intersection. The Town Commission expressed the importance of this project with the MPO, FDOT and County. Project Sponsor: Town of Hillsboro Beach							Yes	Yes	Yes	Yes
MTP Page # 5-15							MTP Timeframe: 2026-2030			
PE	0	0	0	0	0	0	0	676,129		
ROW	0	0	0	0	0	0	0	3,073,311		
CST	0	0	0	0	0	0	0	3,073,311		
Total	0	0	0	0	0	0	0	6,822,751		

CITY: DEERFIELD BEACH MTP REFERENCE #: 33 OWNERSHIP: STATE Total Project Cost Estimate: 6,822,751

29 2020-24	Priority	Hallandale Beach @ NE 14th Ave - FM#					Funding Source: STATE			
		Type of Work: East Bound - Add Turn Lane					Proposed Study: PD&E			
Implement dual left-turn lane from EB Hallandale Beach Blvd to NB NE 14th Ave. Inadequate storage capacity creates traffic congestion on eastbound Hallandale Beach Blvd. Right of way is required. Project Sponsor: City of Hallandale Beach							Yes	Yes	Yes	Yes
MTP Page # 5-15							MTP Timeframe: 2026-2030			
PE	0	0	0	0	0	0	0	368,131		
ROW	0	0	0	0	0	0	0	1,673,325		
CST	0	0	0	0	0	0	0	1,673,325		
Total	0	0	0	0	0	0	0	3,714,781		

CITY: HALLANDALE BEACH MTP REFERENCE #: 35 OWNERSHIP: STATE Total Project Cost Estimate: 3,714,781

State Funds	Federal Funds	Local Funds
State and Local Funds	State and Federal Funds	Federal and Local Funds

Phase	<2021	2021	2022	2023	2024	2025	Amount Funded	Funding Needed	
30 Priority	South Florida Rail Corridor @ Copans Rd - FM#						Funding Source: STATE		
2020-25	Type of Work: Grade separation			Proposed Study: PD&E			Yes Yes Yes Yes		
Construct grade separation at railroad crossing. Feasibility study is currently in Work Program. FDOT rail office is looking at grade separation in multiple locations. Project Sponsor: Broward MPO									
PE	0	0	0	0	0	0	0	5,198,600	
ROW	0	0	0	0	0	0	0	23,630,000	
CST	0	0	0	0	0	0	0	23,630,000	
Total	0	0	0	0	0	0	0	52,458,600	
CITY: POMPANO BEACH			MTP REFERENCE #: 36		OWNERSHIP: STATE		Total Project Cost Estimate: 52,458,600		
31 Priority	Johnson St from US-1 to N 14th Ave - FM#						Funding Source: FEDERAL		
New	Type of Work: Resiliency Study			Proposed Study: Resiliency			Yes N/A Yes Yes		
Conduct study to determine resiliency improvements. A portion of this project is included in existing project FM# 445518-1. Project Sponsor: Broward MPO									
PE	0	0	0	0	0	0	0	750,000	
Total	0	0	0	0	0	0	0	750,000	
CITY: HOLLYWOOD			MTP REFERENCE #: 37		OWNERSHIP: LOCAL		Total Project Cost Estimate: 750,000		
32 Priority	SE 2nd St/Hibiscus St/Church St Extension Project from US-1 to Church St - FM#						Funding Source: STATE		
2020-31	Type of Work: New Road Construction			Proposed Study: Feasibility			Yes Yes Yes Yes		
Conduct multimodal feasibility study. This new facility would relieve traffic off of Hallandale Beach Blvd and accommodate new trips from future committed developments. New Road, for FDOT to construct, the segment would need to be assigned in the Federal Aid System. ROW is a challenge. Project Sponsor: City of Hallandale Beach									
PE	0	0	0	0	0	0	0	600,000	
Total	0	0	0	0	0	0	0	600,000	
CITY: HALLANDALE BEACH			MTP REFERENCE #: 38		OWNERSHIP: LOCAL		Total Project Cost Estimate: 600,000		

Phase	<2021	2021	2022	2023	2024	2025	Amount Funded	Funding Needed	
33 <small>Priority</small>	East Orange Dr from SW 67th Ave to SR-7 - FM#						Funding Source: STATE		
<small>New</small>	Type of Work: Add center turn lane			Proposed Study: PD&E		Yes Yes Yes Yes			
Add center turn lane and lighting improvements. Project may not need PD&E study. Depends on right of way. Project Sponsor: Town of Davie							MTP Page # 5-15 MTP Timeframe: 2026-2030		
PE	0	0	0	0	0	0	0	1,245,435	
ROW	0	0	0	0	0	0	0	5,661,069	
CST	0	0	0	0	0	0	0	5,661,069	
Total	0	0	0	0	0	0	0	12,567,573	

CITY: DAVIE MTP REFERENCE #: 39 OWNERSHIP: LOCAL Total Project Cost Estimate: 12,567,573

34 <small>Priority</small>	Coral Hills Dr from Sample Rd to NW 31st Ct - FM#						Funding Source: STATE		
<small>New</small>	Type of Work: Add Lanes & Reconstruct			Proposed Study: PD&E		Yes Yes Yes Yes			
Extend left-turn lane on Coral Hills Dr at Sample Rd, widen Coral Hills Dr between Sample Rd and NW 31st to 3-lane cross section including curb and gutter, bike lanes, and new sidewalk on east side. Congestion relief is needed at each of these intersections. Vehicle backup into through lanes and the LOS is failing. Project may not need PD&E study. "Add lanes" are only turn lanes and could go towards LAP. Project Sponsor: City of Coral Springs							MTP Page # 5-16 MTP Timeframe: 2026-2030		
PE	0	0	0	0	0	0	0	304,416	
ROW	0	0	0	0	0	0	0	1,383,708	
CST	0	0	0	0	0	0	0	1,383,708	
Total	0	0	0	0	0	0	0	3,071,832	

CITY: CORAL SPRINGS MTP REFERENCE #: 40 OWNERSHIP: LOCAL Total Project Cost Estimate: 3,071,832

35 <small>Priority</small>	SE 9th St FEC Rail Crossing Realignment from Dixie Hwy to US-1 - FM#						Funding Source: STATE		
<small>2020-35</small>	Type of Work: New FEC rail crossing			Proposed Study: PD&E		Yes Yes Yes No			
Construct grade separation over railroad crossing. Add EB to NB left-turn lane at US-1. Realigning the FEC rail crossing will help calm traffic in the surrounding single family neighborhoods while also creating a street hierarchy in the system. FEC collaboration has not taken place. Project Sponsor: City of Hallandale Beach							MTP Page # 5-16 MTP Timeframe: 2026-2030		
PE	0	0	0	0	0	0	0	188,133	
ROW	0	0	0	0	0	0	0	855,150	
CST	0	0	0	0	0	0	0	855,150	
Total	0	0	0	0	0	0	0	1,898,433	

CITY: HALLANDALE BEACH MTP REFERENCE #: 42 OWNERSHIP: LOCAL Total Project Cost Estimate: 1,898,433

State Funds	Federal Funds	Local Funds
State and Local Funds	State and Federal Funds	Federal and Local Funds

Phase	<2021	2021	2022	2023	2024	2025	Amount Funded	Funding Needed		
36 Priority 2020-42	Pembroke Rd from SW 160th Ave to SW 184th Ave - FM#						Funding Source: STATE			
	Type of Work: Widening			Proposed Study: PD&E			Yes	Yes	Yes	Yes
Widen from 2 to 4 lanes with median, bicycle lanes, sidewalks, lighting, landscaping, hardscape, and irrigation systems. Project Sponsor: City of Miramar										
PE	0	0	0	0	0	0	0	3,113,000		
ROW	0	0	0	0	0	0	0	14,150,000		
CST	0	0	0	0	0	0	0	14,150,000		
Total	0	0	0	0	0	0	0	31,413,000		
CITY: MIRAMAR		MTP REFERENCE #: 43			OWNERSHIP: LOCAL		Total Project Cost Estimate:		31,413,000	
37 Priority 2020-44	University Dr from Old Club Rd to Loxahatchee Rd - FM#						Funding Source: STATE			
	Type of Work: Widening			Proposed Study: PD&E			Yes	Yes	Yes	Yes
Widen from 2 to 4 lanes with bike lanes and sidewalks. University Drive tapers from a 4-lane divided section to a 2-lane roadway south of Old Club Rd causing traffic congestion and back up delays at crossing intersections. Project Sponsor: City of Parkland										
PE	0	0	0	0	0	0	0	2,073,974		
ROW	0	0	0	0	0	0	0	0		
CST	0	0	0	0	0	0	0	9,427,156		
Total	0	0	0	0	0	0	0	11,501,130		
CITY: PARKLAND		MTP REFERENCE #: 44			OWNERSHIP: LOCAL		Total Project Cost Estimate:		11,501,130	
38 Priority 2020-45	SW 148th Ave from Bass Creek Rd to Miramar Pkwy - FM#						Funding Source: FEDERAL			
	Type of Work: Widening			Proposed Study: PD&E			Yes	Yes	Yes	Yes
Widen from 2 to 4 lanes with median, bicycle lanes, sidewalks, lighting, landscaping, hardscape, and irrigation. Road is at LOS F Project Sponsor: City of Miramar										
PE	0	0	0	0	0	0	0	1,608,153		
ROW	0	0	0	0	0	0	0	0		
CST	0	0	0	0	0	0	0	7,309,787		
Total	0	0	0	0	0	0	0	8,917,940		
CITY: MIRAMAR		MTP REFERENCE #: 51			OWNERSHIP: LOCAL		Total Project Cost Estimate:		8,917,940	

Phase	<2021	2021	2022	2023	2024	2025	Amount Funded	Funding Needed		
39 Priority	Miramar Blvd from Flamingo Rd to Hiatus Rd - FM#						Funding Source: FEDERAL			
2020-46	Type of Work: Widening			Proposed Study: PD&E			Yes	Yes	Yes	Yes
Widen from 2 to 4 lanes with median, bicycle lanes, sidewalks, lighting, landscaping, hardscape, and irrigation. Connects to 4 lane segment east of Hiatus Road. Project Sponsor: City of Miramar										
PE	0	0	0	0	0	0	0	3,559,348		
ROW	0	0	0	0	0	0	0	0		
CST	0	0	0	0	0	0	0	16,178,853		
Total	0	0	0	0	0	0	0	19,738,201		
CITY: MIRAMAR			MTP REFERENCE #: 52		OWNERSHIP: LOCAL		Total Project Cost Estimate: 19,738,201			
40 Priority	Sheridan St from 196th Ave to US-27 - FM#						Funding Source: STATE			
2020-52	Type of Work: Widening			Proposed Study: PD&E			Yes	Yes	Yes	Yes
Widen from 2 to 4 lanes (includes sidewalk on one side). Project Sponsor: City of Pembroke Pines										
PE	0	0	0	0	0	0	0	2,387,088		
ROW	0	0	0	0	0	0	0	0		
CST	0	0	0	0	0	0	0	10,850,401		
Total	0	0	0	0	0	0	0	13,237,489		
CITY: PEMBROKE PINES			MTP REFERENCE #: 53		OWNERSHIP: COUNTY		Total Project Cost Estimate: 13,237,489			
41 New	Ravenswood Rd from SW 42nd St to Griffin Rd - FM#						Funding Source: STATE			
	Type of Work: Widening			Proposed Study: PD&E			Yes	Yes	Yes	Yes
Widen from 2 to 4 lanes. Project Sponsor: Broward MPO										
PE	0	0	0	0	0	0	0	814,000		
ROW	0	0	0	0	0	0	0	3,700,000		
CST	0	0	0	0	0	0	0	3,700,000		
Total	0	0	0	0	0	0	0	8,214,000		
CITY: DANIA BEACH			MTP REFERENCE #: 54		OWNERSHIP: COUNTY		Total Project Cost Estimate: 8,214,000			

Phase	<2021	2021	2022	2023	2024	2025	Amount Funded	Funding Needed		
42 Priority New	Wiles Rd from Florida's Turnpike to Powerline Rd - FM#						Funding Source: FEDERAL			
	Type of Work: Widening						Proposed Study: PD&E			
Widen from 4 to 6 lanes. Project Sponsor: Broward MPO							MTP Page # 5-18		MTP Timeframe: 2031-2035	
PE	0	0	0	0	0	0	0	1,474,000		
ROW	0	0	0	0	0	0	0	6,700,000		
CST	0	0	0	0	0	0	0	6,700,000		
Total	0	0	0	0	0	0	0	14,874,000		
CITY: DEERFIELD BEACH			MTP REFERENCE #: 55		OWNERSHIP: COUNTY		Total Project Cost Estimate: 14,874,000			
43 Priority New	Rock Island Rd from McNab Rd to Commercial Blvd - FM#						Funding Source: FEDERAL			
	Type of Work: Add Lanes & Reconstruct						Proposed Study: PD&E			
Widen from 4 to 6 lanes with buffered bike lanes. Project Sponsor: City of Tamarac							MTP Page # 5-18		MTP Timeframe: 2031-2035	
PE	0	0	0	0	0	0	0	676,059		
ROW	0	0	0	0	0	0	0	3,072,997		
CST	0	0	0	0	0	0	0	3,072,997		
Total	0	0	0	0	0	0	0	6,822,053		
CITY: TAMARAC			MTP REFERENCE #: 56		OWNERSHIP: LOCAL		Total Project Cost Estimate: 6,822,053			
44 Priority 2020-26	South Florida Rail Corridor @ Sample Rd/SR-834 - FM#						Funding Source: STATE			
	Type of Work: Grade separation						Proposed Study: PD&E			
Construct grade separation at railroad crossing. Project Sponsor: Broward MPO							MTP Page # 5-19		MTP Timeframe: 2036-2045	
PE	0	0	0	0	0	0	0	5,198,600		
ROW	0	0	0	0	0	0	0	23,630,000		
CST	0	0	0	0	0	0	0	23,630,000		
Total	0	0	0	0	0	0	0	52,458,600		
CITY: POMPANO BEACH			MTP REFERENCE #: 61		OWNERSHIP: STATE		Total Project Cost Estimate: 52,458,600			

Phase	<2021	2021	2022	2023	2024	2025	Amount Funded	Funding Needed	
45	Priority FEC Rail Corridor @ Sample Rd/SR-834 - FM#						Funding Source: STATE		
2020-27	Type of Work: Grade separation						Proposed Study: PD&E		
Construct grade separation at railroad crossing. Project Sponsor: Broward MPO							MTP Page # 5-19	MTP Timeframe: 2036-2045	
PE	0	0	0	0	0	0	0	5,198,600	
ROW	0	0	0	0	0	0	0	23,630,000	
CST	0	0	0	0	0	0	0	23,630,000	
Total	0	0	0	0	0	0	0	52,458,600	
CITY: POMPANO BEACH			MTP REFERENCE #: 62		OWNERSHIP: STATE		Total Project Cost Estimate: 52,458,600		
46	Priority FEC Rail Corridor @ Commercial Blvd/SR-870 - FM#						Funding Source: STATE		
2020-28	Type of Work: Grade separation						Proposed Study: PD&E		
Construct grade separation at railroad crossing. Project Sponsor: Broward MPO							MTP Page # 5-19	MTP Timeframe: 2036-2045	
PE	0	0	0	0	0	0	0	5,198,600	
ROW	0	0	0	0	0	0	0	23,630,000	
CST	0	0	0	0	0	0	0	23,630,000	
Total	0	0	0	0	0	0	0	52,458,600	
CITY: OAKLAND PARK			MTP REFERENCE #: 63		OWNERSHIP: STATE		Total Project Cost Estimate: 52,458,600		
47	Priority Atlantic Blvd @ Powerline Rd - FM#						Funding Source: STATE		
2020-33	Type of Work: Intersection improvements						Proposed Study: PD&E		
Construct center turn overpass. Relieve congestion from left turns. Project Sponsor: Broward MPO							MTP Page # 5-19	MTP Timeframe: 2036-2045	
PE	0	0	0	0	0	0	0	9,900,000	
ROW	0	0	0	0	0	0	0	45,000,000	
CST	0	0	0	0	0	0	0	45,000,000	
Total	0	0	0	0	0	0	0	99,900,000	
CITY: POMPANO BEACH			MTP REFERENCE #: 65		OWNERSHIP: STATE		Total Project Cost Estimate: 99,900,000		

Phase	<2021	2021	2022	2023	2024	2025	Amount Funded	Funding Needed	
48	SR-820/PINES BLVD. @ SR-817/UNIVERSITY DR - FM# 4465871						Funding Source: STATE		
2020-34	Type of Work: Intersection improvements				Proposed Study: N/A		Yes Yes Yes Yes		
2020 MPO PRIORITY #34 RIGHT OF WAY NEEDED. Broward MPO sponsored							MTP Page # 5-19 MTP Timeframe: 2036-2045		
PDE	0	0	0	610,000	2,000,000	0	2,610,000	0	
PE	0	0	0	0	0	2,010,000	2,010,000	9,900,000	
ROW	0	0	0	0	0	0	0	45,000,000	
CST	0	0	0	0	0	0	0	45,000,000	
Total	0	0	0	610,000	2,000,000	2,010,000	4,620,000	99,900,000	
CITY: PEMBROKE PINES			MTP REFERENCE #: 66		OWNERSHIP: STATE		Total Project Cost Estimate: 104,520,000		
49	Hallandale Beach Blvd Bypass from Dixie Highway to US-1 - FM#						Funding Source: STATE		
2020-36	Type of Work: Add Lanes & Reconstruct				Proposed Study: PD&E		Yes Yes Yes Yes		
Add EB to NB left-turn lane at US-1. Project Sponsor: City of Hallandale Beach							MTP Page # 5-19 MTP Timeframe: 2036-2045		
PE	0	0	0	0	0	0	0	12,893,760	
ROW	0	0	0	0	0	0	0	0	
CST	0	0	0	0	0	0	0	58,608,000	
Total	0	0	0	0	0	0	0	71,501,760	
CITY: HALLANDALE BEACH			MTP REFERENCE #: 67		OWNERSHIP: STATE		Total Project Cost Estimate: 71,501,760		
50	South Florida Rail Corridor @ Atlantic Blvd/SR-814 - FM#						Funding Source: STATE		
2020-37	Type of Work: Grade Separation				Proposed Study: PD&E		Yes Yes Yes Yes		
Construct grade separation at railroad crossing. Project Sponsor: Broward MPO							MTP Page # 5-19 MTP Timeframe: 2036-2045		
PE	0	0	0	0	0	0	0	5,198,600	
ROW	0	0	0	0	0	0	0	23,630,000	
CST	0	0	0	0	0	0	0	23,630,000	
Total	0	0	0	0	0	0	0	52,458,600	
CITY: POMPANO BEACH			MTP REFERENCE #: 68		OWNERSHIP: STATE		Total Project Cost Estimate: 52,458,600		

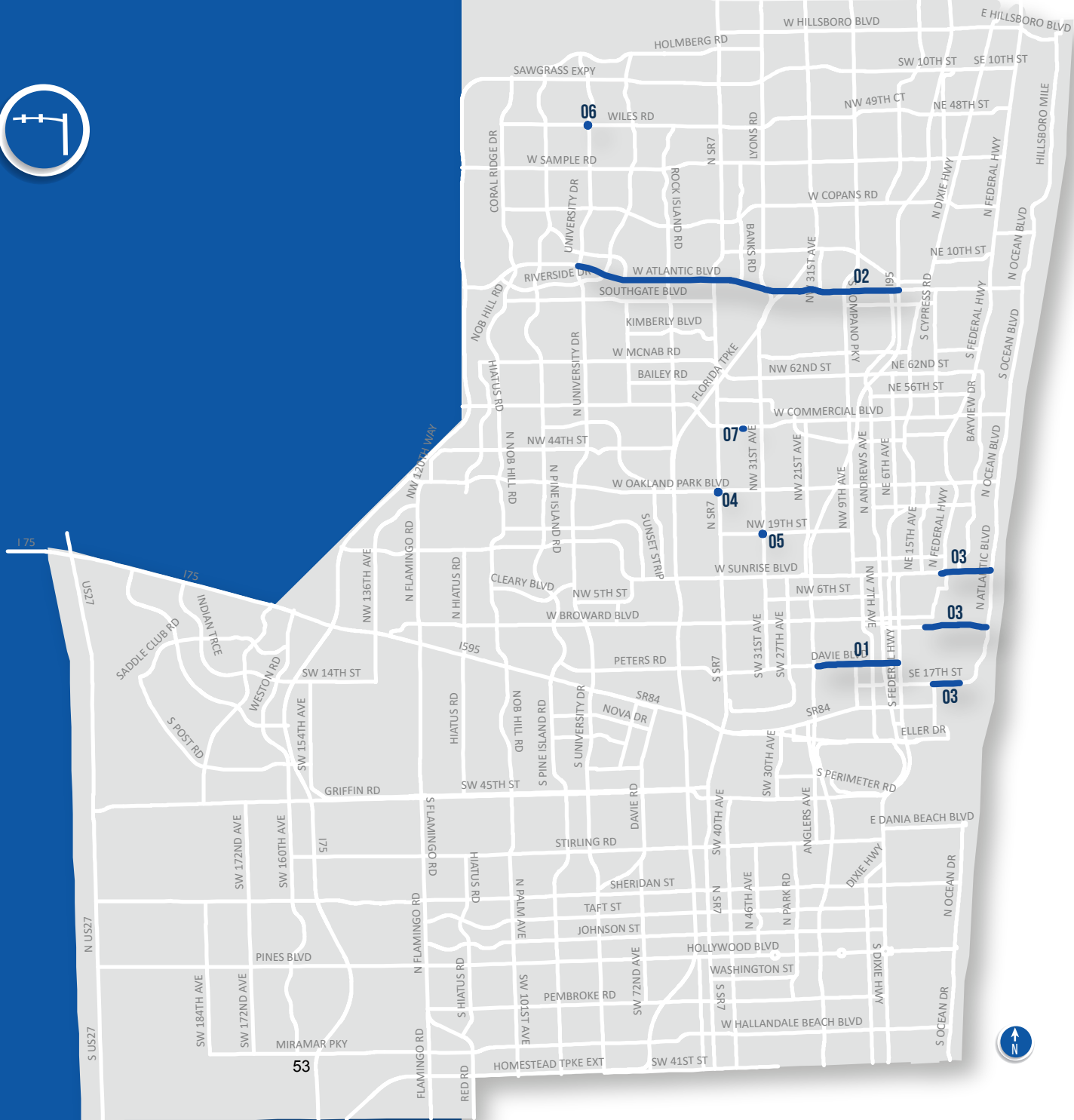
Phase	<2021	2021	2022	2023	2024	2025	Amount Funded	Funding Needed	
51 <small>Priority</small>	South Florida Rail Corridor @ NW 62nd/Cypress Creek - FM#						Funding Source: STATE		
<small>New</small>	Type of Work: Grade Separation			Proposed Study: PD&E		Yes Yes Yes Yes			
Construct grade separation at railroad crossing. Project Sponsor: Broward MPO							MTP Page # 5-19	MTP Timeframe: 2036-2045	
PE	0	0	0	0	0	0	0	5,198,600	
ROW	0	0	0	0	0	0	0	23,630,000	
CST	0	0	0	0	0	0	0	23,630,000	
Total	0	0	0	0	0	0	0	52,458,600	
CITY: FORT LAUDERDALE		MTP REFERENCE #: 69		OWNERSHIP: COUNTY		Total Project Cost Estimate: 52,458,600			
52 <small>Priority</small>	SW 196th Ave from Pines Blvd to Miramar Pkwy - FM#						Funding Source: STATE		
<small>New</small>	Type of Work: Widening			Proposed Study: PD&E		Yes Yes Yes Yes			
Widen from 2 to 4 lanes. Project Sponsor: Broward MPO							MTP Page # 5-20	MTP Timeframe: 2036-2045	
PE	0	0	0	0	0	0	0	4,201,855	
ROW	0	0	0	0	0	0	0	19,099,340	
CST	0	0	0	0	0	0	0	19,099,340	
Total	0	0	0	0	0	0	0	42,400,535	
CITY: MIRAMAR		MTP REFERENCE #: 70		OWNERSHIP: LOCAL		Total Project Cost Estimate: 42,400,535			
53 <small>Priority</small>	Griffin Rd from Bonaventure Blvd to US-27 - FM#						Funding Source: STATE		
<small>New</small>	Type of Work: Add Lanes & Reconstruct			Proposed Study: PD&E		Yes Yes Yes Yes			
Widen Griffin Rd from 2 to 4 lanes (include new bike lanes, install solar lighting from I-75 to US-27). Project Sponsor: Town of Southwest Ranches							MTP Page # 5-20	MTP Timeframe: 2036-2045	
PE	0	0	0	0	0	0	0	3,938,963	
ROW	0	0	0	0	0	0	0	0	
CST	0	0	0	0	0	0	0	17,904,375	
Total	0	0	0	0	0	0	0	21,843,338	
CITY: SOUTHWEST RANCHES		MTP REFERENCE #: 71		OWNERSHIP: COUNTY		Total Project Cost Estimate: 21,843,338			

SYSTEMS MANAGEMENT /SAFETY PROGRAM



LEGEND:

 PRIORITIZED
SYSTEMS
MANAGEMENT/
SAFETY PROJECTS



Systems Management/Safety

Systems Management/Safety MPO Adopted Program Funding Goal 15%

Phase	<2021	2021	2022	2023	2024	2025	Amount Funded	Funding Needed	
01	SR-736/DAVIE BLVD FROM SR-9/I-95 TO SR-5/US-1 - FM# 4441181						Funding Source: STATE		
2020-01	Type of Work: ATMS - ARTERIAL TRAFFIC MGMT				Proposed Study: N/A		Yes	Yes	Yes Yes
2020 MPO TSM&O/SAFETY PRIORITY# 1							MTP Page # 5-3		
ENV	0	0	0	10,000	10,000	0	20,000	0	
PE	0	0	0	435,093	0	0	435,093	0	
CST	0	0	0	0	0	0	0	2,672,134	
Total	0	0	0	445,093	10,000	0	455,093	2,672,134	
CITY: FORT LAUDERDALE				OWNERSHIP: STATE			Total Project Cost Estimate: 3,127,227		
02	SR-814/ATLANTIC BLVD FROM SR-7/US-441 TO SR-9/I-95 - FM# 4441191						Funding Source: STATE		
2020-02	Type of Work: ATMS - ARTERIAL TRAFFIC MGMT				Proposed Study: N/A		Yes	Yes	Yes Yes
2020 MPO TSM&O/SAFETY PRIORITY# 2							MTP Page # 5-3		
ENV	0	0	0	10,000	10,000	0	20,000	0	
PE	0	0	50,000	535,504	0	0	585,504	0	
CST	0	0	0	0	0	0	0	4,006,608	
Total	0	0	50,000	545,504	10,000	0	605,504	4,006,608	
CITY: COCONUT CREEK/CORAL SPRINGS/MARGATE/POMPANO BEACH				OWNERSHIP: STATE			Total Project Cost Estimate: 4,612,112		
03	MOVABLE BRIDGE INTEGRATION INTO TSM&O - VARIOUS LOCATIONS - FM# 4441201						Funding Source: STATE		
2020-03	Type of Work: PRELIMINARY ENGINEERING				Proposed Study: N/A		Yes	Yes	Yes Yes
2020 MPO TSM&O/SAFETY PRIORITY# 3 SR-736/DAVIE BLVD BRIDGE; A1A/17TH ST BRIDGE; LAS OLAS BRIDGE; SR-816/SUNRISE BLVD BRIDGE; 32-01=CON OPS 32-02=DESIGN; 32-03=POST ASSESSMENT							MTP Page # 5-3		
PE	0	0	0	100,000	0	690,997	790,997	0	
CST	0	0	0	0	0	0	0	4,376,485	
Total	0	0	0	100,000	0	690,997	790,997	4,376,485	
CITY: FORT LAUDERDALE				OWNERSHIP: STATE			Total Project Cost Estimate: 5,167,482		

Phase	<2021	2021	2022	2023	2024	2025	Amount Funded	Funding Needed	
04 Priority 2020-04	SR-816/Oakland Park Blvd @ SR-7/US-4417 - FM# Type of Work: Safety Study Proposed Study: Safety Total severity factor: 1143						Funding Source: STATE Yes N/A Yes Yes MTP Page # 5-30		
PLN	0	0	0	0	0	0	0	250,000	
Total	0	0	0	0	0	0	0	250,000	
CITY: LAUDERDALE LAKES				OWNERSHIP: STATE		Total Project Cost Estimate: 250,000			
05 Priority 2020-08	NW 19th St @ NW 31st Ave - FM# Type of Work: Safety Study Proposed Study: Safety Total severity factor: 814.5. MPO to manage.						Funding Source: STATE Yes N/A Yes Yes MTP Page # 5-30		
PLN	0	0	0	0	0	0	0	200,000	
Total	0	0	0	0	0	0	0	200,000	
CITY: FORT LAUDERDALE				OWNERSHIP: COUNTY		Total Project Cost Estimate: 200,000			
06 Priority 2020-09	N University Dr @ Wiles Rd - FM# Type of Work: Safety Study Proposed Study: Safety Total severity factor: 734. MPO to manage.						Funding Source: STATE Yes N/A Yes Yes MTP Page # 5-30		
PLN	0	0	0	0	0	0	0	200,000	
Total	0	0	0	0	0	0	0	200,000	
CITY: CORAL SPRINGS				OWNERSHIP: COUNTY/LOCAL		Total Project Cost Estimate: 200,000			
07 Priority 2020-10	FDOT Signal System - FM# Type of Work: Signal System Improvements Proposed Study: N/A \$169,227,273 is set aside for on-system traffic signal improvements during the 2045 MPT planning horizon. FDOT carries over project to support TSM&O projects.						Funding Source: STATE Yes Yes Yes Yes MTP Page # 5-30		
ENV,PE,CST	0	0	0	0	0	0	0	169,227,273	
Total	0	0	0	0	0	0	0	169,227,273	
CITY: VARIOUS				OWNERSHIP: STATE		Total Project Cost Estimate: 169,227,273			

Transit

Transit MPO Adopted Program Funding Goal 10%

Phase	<2021	2021	2022	2023	2024	2025	Amount Funded	Funding Needed		
01	Priority Andrews & 3rd Avenues Mobility Improvements SE 17th Street to Sunrise Blvd - FM#						Funding Source: FEDERAL AND LOCAL			
2020-01	Type of Work: Feasibility Study			Proposed Study: Feasibility			Yes	Yes	Yes	Yes
Reconfigure streets to be oneway oriented, with shared use path, transit-only lane, lighting, stormwater, transit, crosswalks. Potential Surtax project. Project remains on MMPL to supplement funds. Coordination is still under way. Project Sponsor: City of Fort Lauderdale										
PE	0	0	0	0	0	0	0	10,000,000		
Total	0	0	0	0	0	0	0	10,000,000		
CITY: FORT LAUDERDALE				OWNERSHIP: COUNTY			Total Project Cost Estimate: 10,000,000			
02	Priority Hollywood/Pines Blvd. Rapid Bus from Flamingo Rd. (Pembroke Pines) to Hollywood (Young Circle) - FM#						Funding Source: STATE AND LOCAL			
2020-02	Type of Work: Transit Improvement			Proposed Study: N/A			Yes	Yes	Yes	No
Implement 10-15 min limited stop bus service, mixed traffic or semiexclusive Business Access and Transit (BAT) lanes, level boarding stations, use of Transit Signal Priority (TSP)/Queue Jump technologies, mobile ticketing. County is seeking federal funds and need to finalize components and coordination. Project Sponsor: Broward County										
PE	0	0	0	0	0	0	0	3,074,180		
CST	0	0	0	0	0	0	0	61,483,599		
Total	0	0	0	0	0	0	0	64,557,779		
CITY: HOLLYWOOD/PEMBROKE PINES				OWNERSHIP: STATE			Total Project Cost Estimate: 64,557,779			
03	Priority University Dr Rapid Bus from Golden Glades to Sample Rd. - FM#						Funding Source: STATE AND LOCAL			
2020-03	Type of Work: Transit Improvement			Proposed Study: N/A			Yes	Yes	Yes	No
Implement 10-15 min limited stop bus service, mixed traffic or semiexclusive Business Access and Transit (BAT) lanes, level boarding stations, use of Transit Signal Priority (TSP)/Queue Jump technologies, mobile ticketing. County is seeking federal funds and need to finalize components and coordination. Project Sponsor: Broward County										
PE	0	0	0	0	0	0	0	5,509,339		
CST	0	0	0	0	0	0	0	110,186,775		
Total	0	0	0	0	0	0	0	115,696,114		
CITY: CORAL SPRINGS/COOPER				OWNERSHIP: STATE			Total Project Cost Estimate: 115,696,114			
CITY/DAVIE/LAUDERHILL/MIRAMAR/PLANTATION/PEMBROKE PINES/TAMARAC/SUNRISE										

Phase	<2021	2021	2022	2023	2024	2025	Amount Funded	Funding Needed
-------	-------	------	------	------	------	------	---------------	----------------

04 Priority **Tri-Rail Rolling Stock (33% share of railcars & locomotives) - 6 new locomotives and 10 bi-level coaches - FM#** **Funding Source: FEDERAL**

2020-04 **Type of Work:** Transit Improvement **Proposed Study:** N/A

1/3 of the cost to replace the rolling stock for Tri-Rail, which includes 6 new locomotives and 10 new bi-level coaches. As any available funds are allocated to this project, we suggest they be flexed to FTA under the SFRTA account. Recommended for TRIP funds. SU would function as matching funds. Project Sponsor: SFRTA

Yes
Yes
Yes
Yes

MTP Page # 5-29 *MTP Timeframe: 2036-2045*

ROW	0	0	0	0	0	0	0	24,333,333
Total	0	0	0	0	0	0	0	24,333,333

CITY: SFRTA **OWNERSHIP:** SFRTA **Total Project Cost Estimate:** 24,333,333

05 Priority **Tri-Rail Mobile Ticketing and Fare Verification - FM#** **Funding Source: FEDERAL**

New **Type of Work:** Transit Improvement **Proposed Study:** N/A

Fund Mobile Ticketing and Fare Verification Equipment. As any available funds are allocated to this project, we suggest they be flexed to FTA under the SFRTA account. Project Sponsor: SFRTA

Yes
Yes
Yes
Yes

MTP Page # 5-29 *MTP Timeframe: 2036-2045*

PE	0	0	0	0	0	0	0	125,000
CST	0	0	0	0	0	0	0	2,500,000
Total	0	0	0	0	0	0	0	2,625,000

CITY: SFRTA **OWNERSHIP:** SFRTA **Total Project Cost Estimate:** 2,625,000

4

FLORIDA'S TURNPIKE

LIST OF PRIORITIES



10-Year Finance Plan Projects

System / Facility	Category	County	FPN	Limits (From / To)		Project Description	Project Manager	Existing Deficiency / Yr Needed	PDE Yr	PE Yr	CST Yr	PDE Total Funding (\$K)	PE Total Funding (\$K)	CST Total Funding (\$K)	Source (FP, TT, Other)
Sawgrass Expressway / SR 869	Widening	Broward	437155-1	MP 0.5 - S of Sunrise Blvd / SR 838	MP 8 - Atlantic Blvd / SR 814	Widen from 6 to 10 lanes Includes interchange improvements: ◆ MP 1 - Sunrise Blvd / SR 838 ◆ MP 3 - Oakland Park Blvd ◆ MP 5 - Commercial Blvd Includes new interchange: ◆ NW 8th St	PRICE	2020	Complete - 2017	2020	2024	-	\$1,296	\$301,137	10-yr FP
Sawgrass Expressway / SR 869	Widening	Broward	435461-1	MP 8 - Atlantic Blvd / SR 814	MP 18 - US 441 / SR 7	Widen from 6 to 10 lanes Includes interchange improvements: ◆ MP 14 - Coral Ridge Dr ◆ MP 15 - University Dr / SR 817	PRICE	2020	Complete - 2017	2020	2022	-	\$5	\$184,542	10-yr FP
Sawgrass Expressway / SR 869	Widening	Broward	437224-1	MP 18 - US 441 / SR 7	MP 22 - Powerline Rd	Widen from 6 to 10 lanes w/CD Includes interchange improvements: ◆ MP 18 - US 441 / SR 7 ◆ MP 19 - Lyons Rd ◆ MP 21 - Southern Turnpike Mainline / SR 91 / SW 10th St (existing deficiency)	PRICE	2025	2020	2023	2026	\$17	\$20,607	\$508,990	10-yr FP
Sawgrass Expressway / SR 869 / SW 10th St	Widening	Broward	439891-1 ³	MP 22 - Powerline Rd	Military Trl	Widen from 4 to 8 lanes	BOSTIAN	NA	2020	-	2023	District 4	-	\$97,387	10-yr FP
Sawgrass Expwy / SR 869	Interchange	Broward	443956-1	-	-	Interchange improvement: ◆MP 8 - Atlantic Blvd / SR 814	PRICE	-	Complete - 2017	2020	2022	-	\$4,476	\$57,798	10-yr FP
Sawgrass Expwy / SR 869	Interchange	Broward	445140-1	-	-	TSM&O Interchange improvement: ◆MP 19 - Lyons Rd	BROWN	-	2020	2020	2021	\$17	\$2	\$348	10-yr FP
Southern Turnpike Mainline / SR 91	TSM&O	Broward	446223-1	MP 47 - Turnpike Ext / SR 821	MP 51 - Johnson St	TSM&O Add auxiliary lanes from 6 to 8 lanes	HEALY	Existing Deficiency	Complete - 2005	2021	2023	-	\$450	\$57,382	10-yr FP
Southern Turnpike Mainline / SR 91	Widening	Broward	406095-1 ²	MP 47 - Turnpike Ext / SR 821	MP 51 - Johnson St	Widen from 8 to 10 lanes w/ML Includes interchange improvement: ◆ MP 49 - Hollywood Blvd / Pines Blvd / SR 820 (existing deficiency) Associated FPN: 406099-1	HEALY	Existing Deficiency	-	2020	2026	-	\$3,507	\$228,950	10-yr FP
Southern Turnpike Mainline / SR 91	TSM&O	Broward	446224-1	MP 51 - Johnson St	MP 53 - Griffin Rd / SR 818	TSM&O Add auxiliary lanes from 6 to 8 lanes	HEALY	Existing Deficiency	Complete - 2005	2021	2023	-	\$450	\$50,535	10-yr FP
Southern Turnpike Mainline / SR 91	Widening	Broward	406095-4 ²	MP 51 - Johnson St	MP 53 - Griffin Rd / SR 818	Widen from 8 to 10 lanes w/ML Includes interchange improvement: ◆ MP 53 - Griffin Rd / SR 818 (existing deficiency) Associated FPN: 406099-1	HEALY	Existing Deficiency	-	2020	2027	-	\$3,612	\$158,641	10-yr FP
Southern Turnpike Mainline / SR 91	TSM&O	Broward	415927-4	MP 71 - Sawgrass Expwy / SR 869	MP 73 - Broward / Palm Beach CL	TSM&O Add auxiliary lanes from 6 to 8 lanes	PRICE	Existing Deficiency	Complete - 2005	2021	2024	-	\$2,687	\$33,591	10-yr FP
Southern Turnpike Mainline / SR 91	Widening	Broward	415927-1 ²	MP 71 - Sawgrass Expwy / SR 869	MP 73 - Broward / Palm Beach CL	Widen from 8 to 10 lanes w/ML	PRICE	Existing Deficiency	-	2022	2027	-	\$3,600	\$79,992	10-yr FP
Southern Turnpike Mainline / SR 91	Interchange	Broward	444301-1	-	-	TSM&O Interchange improvement: ◆ MP 69 - Sample Rd / SR 834	HEALY	Existing Deficiency	-	2020	2022	-	\$301	\$1,260	10-yr FP
Turnpike Extension / SR 821	Widening	Miami-Dade, Broward	435546-1	MP 39 - I-75	MP 43 - NW 57th Ave	Widen from 4 to 8 lanes w/ML (Under construction)	ALEMANY	2025	Complete - 2010	2020	2020	-	\$9	\$711	10-yr FP

Unfunded Projects

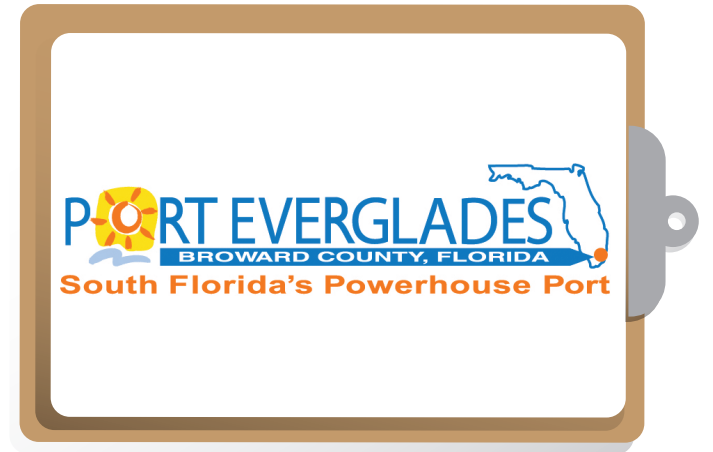
System / Facility	Category	County	FPN	Limits (From / To)		Project Description	Project Manager	Existing Deficiency / Yr Needed	PDE Yr	PE Yr	CST Yr	PDE Total Funding (\$K)	PE Total Funding (\$K)	CST Total Funding (\$K)	Source (FP, TT, Other)
Southern Turnpike Mainline / SR 91	Widening	Broward	442212-1 ²	MP 54 - I-595	MP 70 - Wiles Rd	Widen from 6/8 to 10/12 lanes w/ML Includes interchange improvements: ◆ MP 62 - Commercial Blvd / SR 870 ◆ MP 67 - Coconut Creek Pkwy / Martin Luther King Blvd / Blount Rd ◆ MP 69 - Sample Rd / SR 834 Includes new interchanges: ◆ MP 61 - Oakland Park Blvd ◆ MP 63 - Cypress Creek Rd	HEYWOOD	2020	2020	-	-	\$212	-	-	10-yr FP
Southern Turnpike Mainline / SR 91	TSM&O	Broward	-	MP 47 - Turnpike Ext / SR 821	MP 71 - Sawgrass Expwy / SR 869	TSM&O improvements / Auxiliary lanes	-	Existing Deficiency	-	-	-	-	-	-	Traffic Trends
Southern Turnpike Mainline / SR 91	Interchange	Broward	439742-1 ²	-	-	Interchange improvement: ◆ MP 47 - Turnpike Ext / SR 821 (Spur) Associated FPN: 406095-1	BOLAN	2025	2020	-	-	\$6	-	-	10-yr FP

Projects Proposed/Funded by Others

System / Facility	Category	County	FPN	Limits (From / To)		Project Description	Project Manager	Existing Deficiency / Yr Needed	PDE Yr	PE Yr	CST Yr	PDE Total Funding (\$K)	PE Total Funding (\$K)	CST Total Funding (\$K)	Source (FP, TT, Other)
Sawgrass Expwy / SR 869	Interchange	Broward	N/A	-	-	Interchange improvement: ◆ MP 1B - Pat Salerno Dr	-	-	-	-	-	-	-	-	City of Sunrise Request
Southern Turnpike Mainline / SR 91	Interchange	Broward	N/A	-	-	New interchange: ◆ MP 52 - Stirling Rd	-	-	-	-	-	-	-	-	Seminole Tribe Request

PORT EVERGLADES

LIST OF PRIORITIES



2021 PRIORITY #	POTENTIAL PROJECT	DESCRIPTION	TYPE OF WORK	EST. COST
1	Super Post Panamax Cranes (3)	Purchase of Cranes	Construction	\$27,600,000
2	Slip 1 New Bulkheads at Berths 9 & 10	New Bulkheads	Construction	\$25,000,000
3	I-595 Flyover	New Road	Design/Construction	\$45,977,010
4	Griffin Road Extension/NE 7 th Avenue	Road Extension/Improvements	Design	\$2,432,030
5	Entrance Channel North Wall	Seawall	Design/Construction	\$10,440,000
6	Cruise Terminal 21	Cruise Terminal	Construction	\$30,000,000
7	Port Cranes Improvements	Crane Lifting Capacity Upgrades	Construction	\$13,400,000
8	New Public Works Facility Building	Construction of New Building	Construction	\$9,745,000
9	New Bulkheads at Berths 16, 17 & 18	New Bulkheads	Construction	\$11,948,000
10	New Bulkhead at Berths 21 & 22	New Bulkheads	Construction	\$9,579,000
11	New Slip 3 bulkheads at Berths 14 & 15	New Bulkheads	Design	\$1,405,000

2021 PRIORITY #	POTENTIAL PROJECT	DESCRIPTION	TYPE OF WORK	EST. COST
12	Tracor Basin	Basin Filling	Design	\$7,640,000
13	Ro-Ro Yard Relocation/Expansion	Cargo Yard	Design/Construction	\$9,548,000
14	Cruise Terminal 29	Cruise Terminal	Design	\$16,163,000
15	Breakbulk Yard	Storage Facility	Design/Construction	\$3,729,000
16	New Bulkhead at Berth 29	New Bulkhead	Design/Construction	\$9,744,500
17	New Bulkheads at Berths 4 & 6	New Bulkheads	Design	\$4,329,000