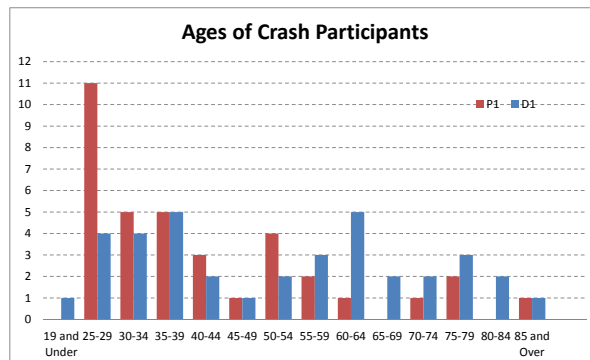
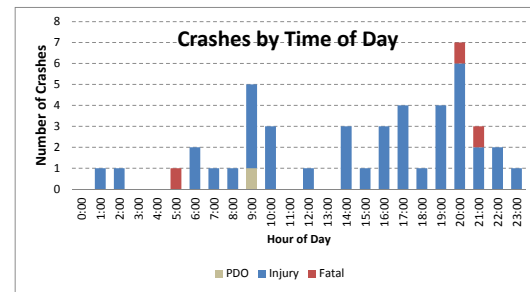
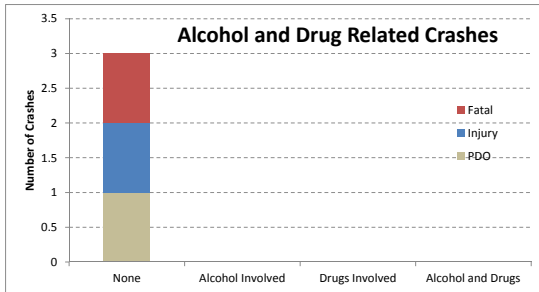
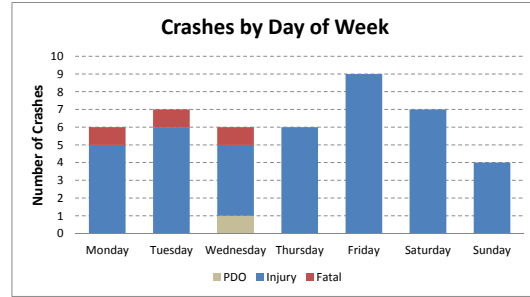
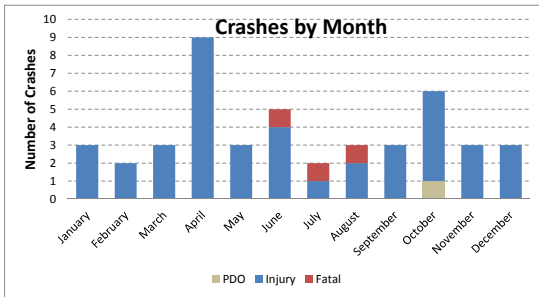
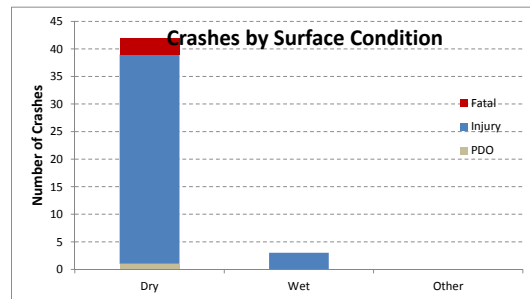
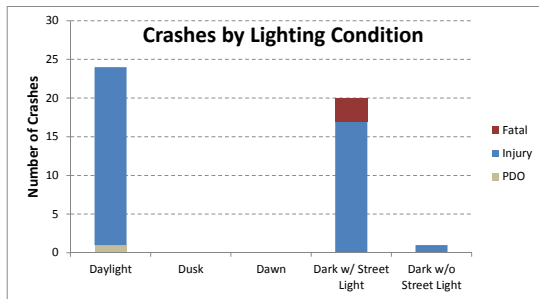
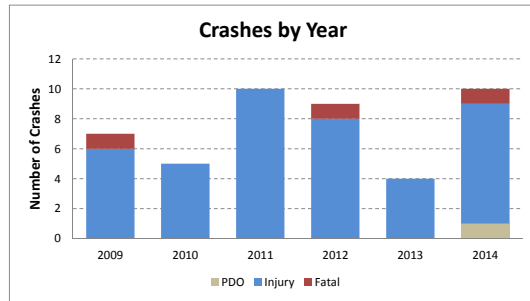
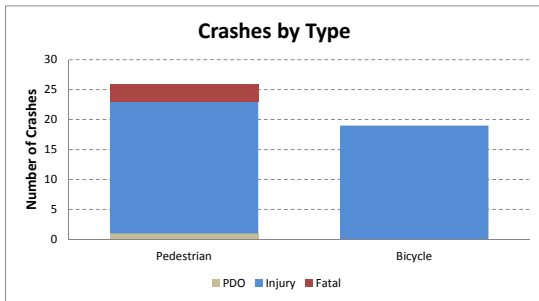
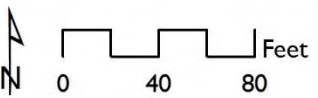


CRASH ANALYSIS - Sunrise Boulevard and US 1

		Analysis Year					Severity			Total	Average	Percent	
		2010	2011	2012	2013	2014	2015	PDO	Injury				Fatal
Type of Crash	Pedestrian	4	2	7	5	1	7	1	22	3	26	4.33	57.8%
	Bicycle	3	3	3	4	3	3	0	19	0	19	3.17	42.2%
	Total Crashes	7	5	10	9	4	10	1	41	3	45	7.50	100.0%
Crash Severity	PDO	0	0	0	0	0	1				1	0.17	2.2%
	Injury	6	5	10	8	4	8				41	6.83	91.1%
	Fatal	1	0	0	1	0	1				3	0.50	6.7%
Light Conditions	Daylight	2	2	8	4	2	6	1	23	0	24	4.00	53.3%
	Dusk	0	0	0	0	0	0	0	0	0	0	0.00	0.0%
	Dawn	0	0	0	0	0	0	0	0	0	0	0.00	0.0%
	Dark w/ Street Light	5	3	2	5	2	3	0	17	3	20	3.33	44.4%
	Dark w/o Street Light	0	0	0	0	0	1	0	1	0	1	0.17	2.2%
Surface Condition	Unknown	0	0	0	0	0	0	0	0	0	0	0.00	0.0%
	Dry	6	4	10	9	4	9	1	38	3	42	7.00	93.3%
	Wet	1	1	0	0	0	1	0	3	0	3	0.50	6.7%
Month	Other	0	0	0	0	0	0	0	0	0	0	0.00	0.0%
	January	0	0	2	0	0	1	0	3	0	3	0.50	6.7%
	February	0	0	0	2	0	0	0	2	0	2	0.33	4.4%
	March	0	0	2	1	0	0	0	3	0	3	0.50	6.7%
	April	1	2	1	2	1	2	0	9	0	9	1.50	20.0%
	May	0	1	1	0	0	1	0	3	0	3	0.50	6.7%
	June	0	1	0	1	2	1	0	4	1	5	0.83	11.1%
	July	1	0	1	0	0	0	0	1	1	2	0.33	4.4%
	August	0	0	0	1	0	2	0	2	1	3	0.50	6.7%
	September	0	1	0	1	0	1	0	3	0	3	0.50	6.7%
	October	3	0	0	0	1	2	1	5	0	6	1.00	13.3%
	November	2	0	1	0	0	0	0	3	0	3	0.50	6.7%
December	0	0	2	1	0	0	0	3	0	3	0.50	6.7%	
Day of Week	Monday	0	2	2	1	0	1	0	5	1	6	1.00	13.3%
	Tuesday	0	0	1	1	2	3	0	6	1	7	1.17	15.6%
	Wednesday	1	0	2	1	0	2	1	4	1	6	1.00	13.3%
	Thursday	2	0	1	2	0	1	0	6	0	6	1.00	13.3%
	Friday	2	1	1	3	0	2	0	9	0	9	1.50	20.0%
	Saturday	1	2	3	1	0	0	0	7	0	7	1.17	15.6%
	Sunday	1	0	0	0	2	1	0	4	0	4	0.67	8.9%
Hour of Day	0:00	0	0	0	0	0	0	0	0	0	0	0.00	0.0%
	1:00	1	0	0	0	0	0	0	1	0	1	0.17	2.2%
	2:00	0	1	0	0	0	0	0	1	0	1	0.17	2.2%
	3:00	0	0	0	0	0	0	0	0	0	0	0.00	0.0%
	4:00	0	0	0	0	0	0	0	0	0	0	0.00	0.0%
	5:00	0	0	0	1	0	0	0	0	1	1	0.17	2.2%
	6:00	0	0	0	0	1	1	0	2	0	2	0.33	4.4%
	7:00	0	0	1	0	0	0	0	1	0	1	0.17	2.2%
	8:00	0	0	0	0	0	1	0	1	0	1	0.17	2.2%
	9:00	0	1	2	1	0	1	1	4	0	5	0.83	11.1%
	10:00	0	0	3	0	0	0	0	3	0	3	0.50	6.7%
	11:00	0	0	0	0	0	0	0	0	0	0	0.00	0.0%
	12:00	0	0	0	0	0	1	0	1	0	1	0.17	2.2%
	13:00	0	0	0	0	0	0	0	0	0	0	0.00	0.0%
	14:00	0	0	1	1	1	0	0	3	0	3	0.50	6.7%
	15:00	1	0	0	0	0	0	0	1	0	1	0.17	2.2%
	16:00	0	1	0	1	1	0	0	3	0	3	0.50	6.7%
	17:00	1	0	1	1	0	1	0	4	0	4	0.67	8.9%
	18:00	0	0	0	1	0	0	0	1	0	1	0.17	2.2%
	19:00	2	0	0	1	0	1	0	4	0	4	0.67	8.9%
	20:00	0	2	2	0	1	2	0	6	1	7	1.17	15.6%
	21:00	1	0	0	0	0	2	0	2	1	3	0.50	6.7%
	22:00	0	0	0	2	0	0	0	2	0	2	0.33	4.4%
	23:00	1	0	0	0	0	0	0	1	0	1	0.17	2.2%
Alcohol	None	5	4	10	9	3	8	1	1	1	39	6.50	86.7%
	Alcohol Involved	0	0	1	1	0	2	0	0	0	4	0.67	8.9%
	Drugs Involved	0	0	0	0	0	0	0	0	0	0	0.00	0.0%
	Alcohol and Drugs	0	0	1	0	0	0	0	0	0	1	0.17	2.2%
	Undetermined	0	0	0	0	0	0	0	0	0	0	0.00	0.0%
Age of Ped/Bicyclist	19 and Under	0	0	0	0	0	0	0	0	0	0	0.00	0.0%
	25-29	2	2	2	3	2	0				11	1.83	24.4%
	30-34	1	1	1	1	1	0				5	0.83	11.1%
	35-39	1	0	2	1	1	0				5	0.83	11.1%
	40-44	1	1	0	1	0	0				3	0.50	6.7%
	45-49	0	1	0	0	0	0				1	0.17	2.2%
	50-54	2	0	1	1	0	0				4	0.67	8.9%
	55-59	0	0	2	0	0	0				2	0.33	4.4%
	60-64	0	0	0	0	0	1				1	0.17	2.2%
	65-69	0	0	0	0	0	0				0	0.00	0.0%
	70-74	0	0	0	1	0	0				1	0.17	2.2%
	75-79	0	0	1	1	0	0				2	0.33	4.4%
Age of Driver	80-84	0	0	0	0	0	0				0	0.00	0.0%
	85 and Over	0	0	1	0	0	0				1	0.17	2.2%
	19 and Under	0	1	0	0	0	0				1	0.17	2.2%
	20-24	1	1	1	1	0	0				4	0.67	8.9%
	25-29	1	0	2	1	0	0				4	0.67	8.9%
	30-34	2	0	0	1	0	2				5	0.83	11.1%
	35-39	0	0	0	1	0	1				2	0.33	4.4%
	40-44	1	0	0	0	0	0				1	0.17	2.2%
	45-49	0	0	0	1	0	1				2	0.33	4.4%
	50-54	0	0	1	0	1	1				3	0.50	6.7%
	55-59	1	1	2	1	0	0				5	0.83	11.1%
	60-64	0	0	1	0	1	0				2	0.33	4.4%
65-69	0	1	0	1	0	0				2	0.33	4.4%	
70-74	1	0	0	1	0	1				3	0.50	6.7%	
75-79	0	1	0	0	1	0				2	0.33	4.4%	
80-84	0	0	1	0	0	0				1	0.17	2.2%	
85 and Over	0	0	0	0	0	0				0	0.00	0.0%	

CRASH ANALYSIS - Sunrise Boulevard and US 1





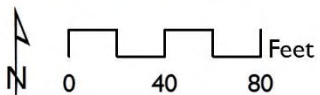
Broward MPO Pedestrian and Bicycle Safety Action Plan
Pedestrian Crashes – Sunrise Boulevard from NE 14th Avenue to US 1

Figure
1

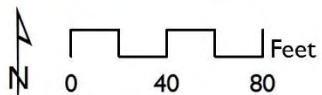
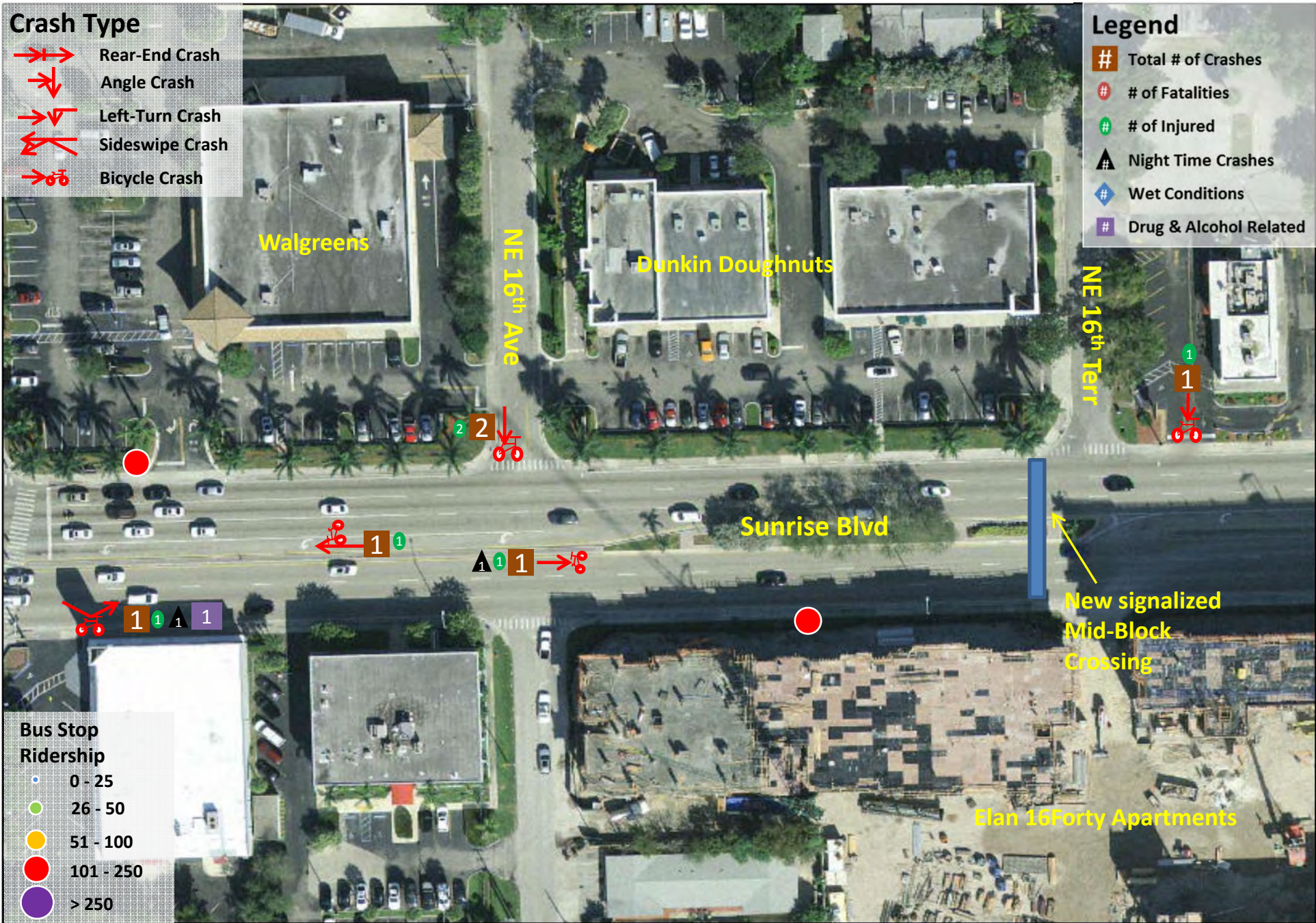


Broward MPO Pedestrian and Bicycle Safety Action Plan
 Bicycle Crashes – Sunrise Boulevard from NE 14th Avenue to US 1

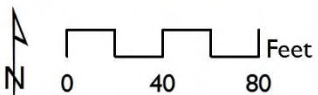
Figure
 2



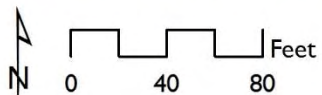
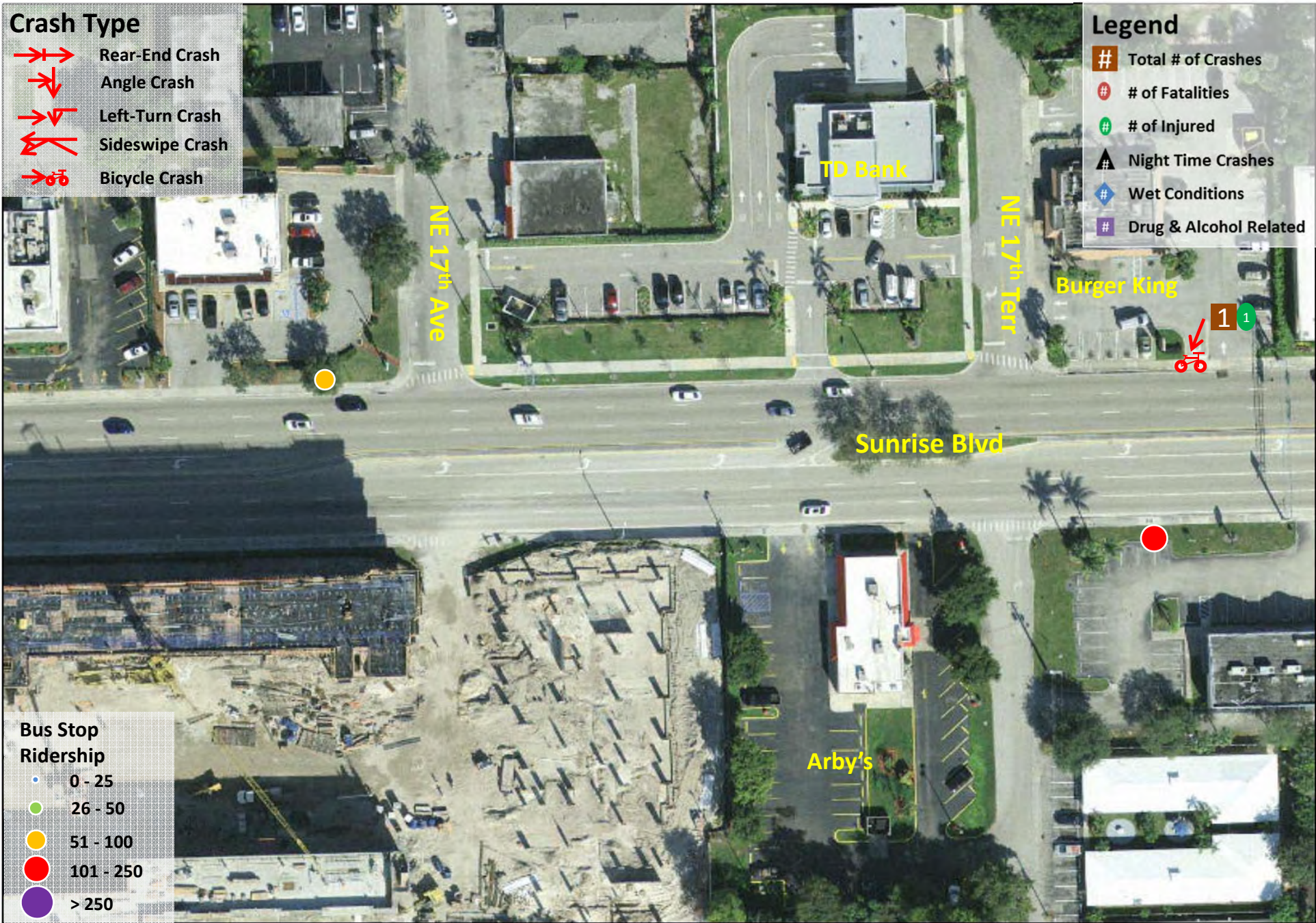
Broward MPO Pedestrian and Bicycle Safety Action Plan
 Pedestrian Crashes – Sunrise Boulevard from NE 14th Avenue to US 1



Broward MPO Pedestrian and Bicycle Safety Action Plan
Bicycle Crashes – Sunrise Boulevard from NE 14th Avenue to US 1



Broward MPO Pedestrian and Bicycle Safety Action Plan
 Pedestrian Crashes – Sunrise Boulevard from NE 14th Avenue to US 1

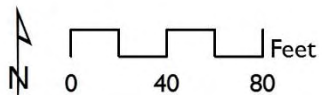
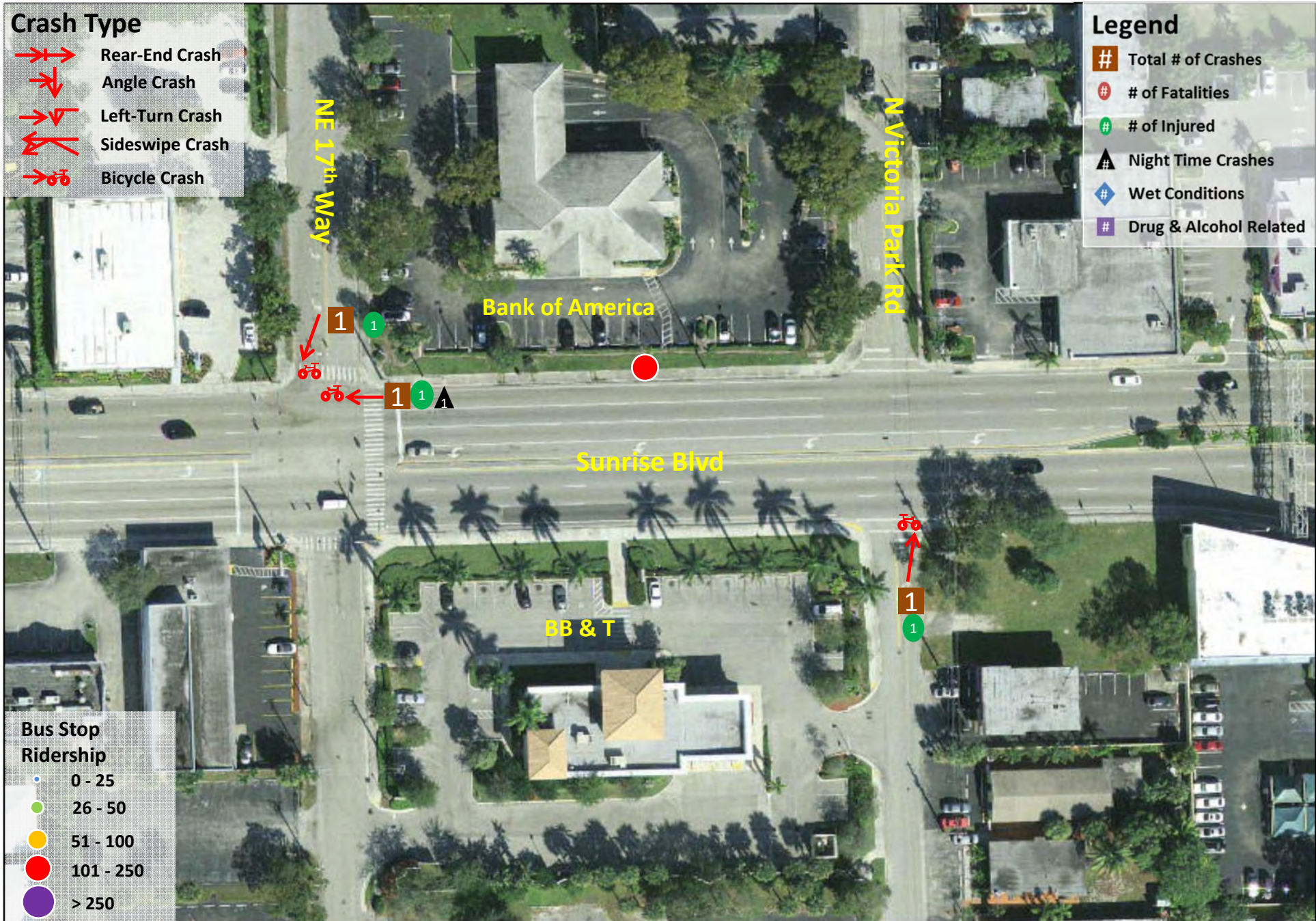


Broward MPO Pedestrian and Bicycle Safety Action Plan
Bicycle Crashes – Sunrise Boulevard from NE 14th Avenue to US 1

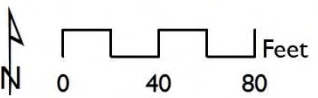
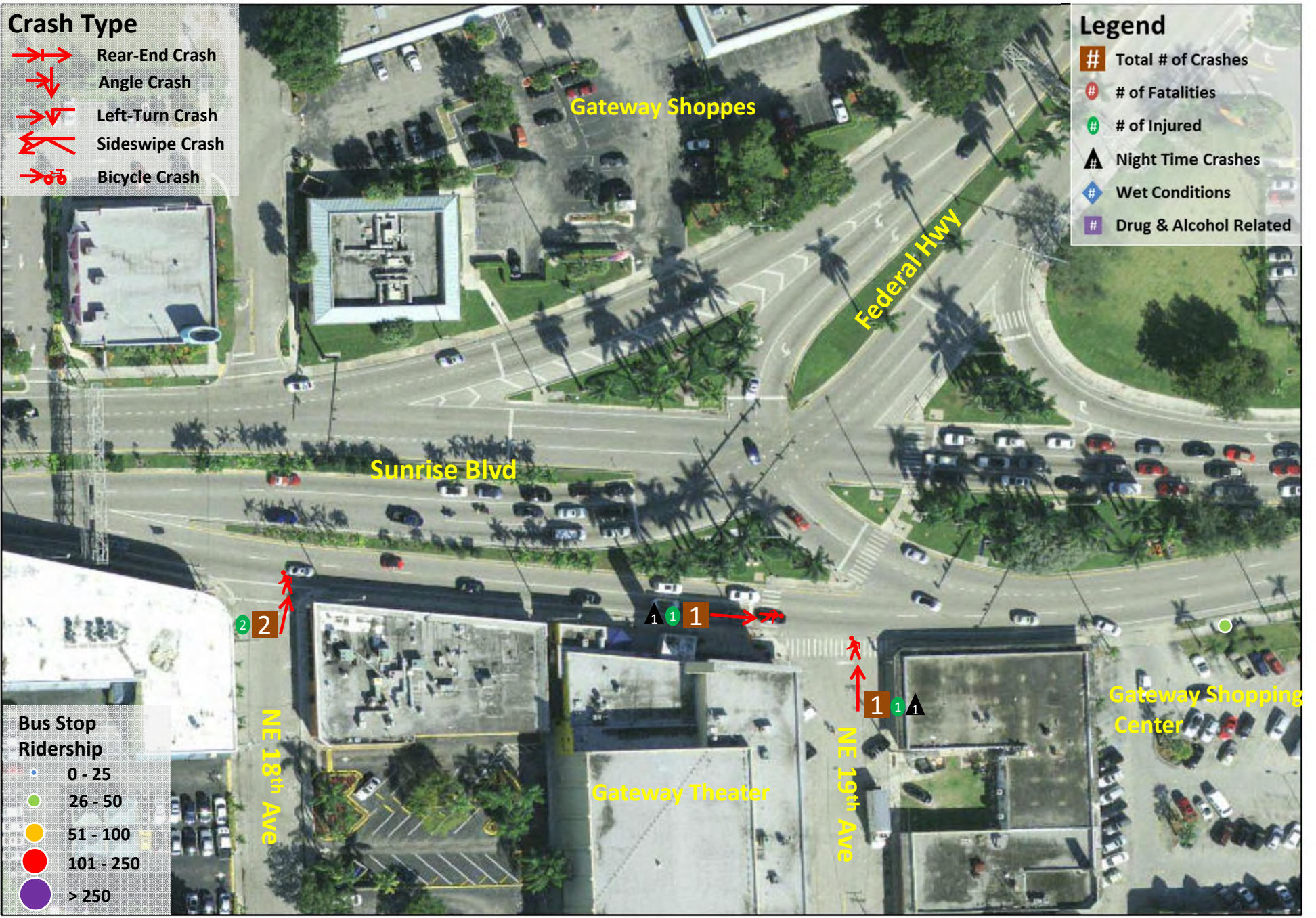


Broward MPO Pedestrian and Bicycle Safety Action Plan
 Pedestrian Crashes – Sunrise Boulevard from NE 14th Avenue to US 1

Figure
 7








Broward MPO Pedestrian and Bicycle Safety Action Plan
 Bicycle Crashes – Sunrise Boulevard from NE 14th Avenue to US 1



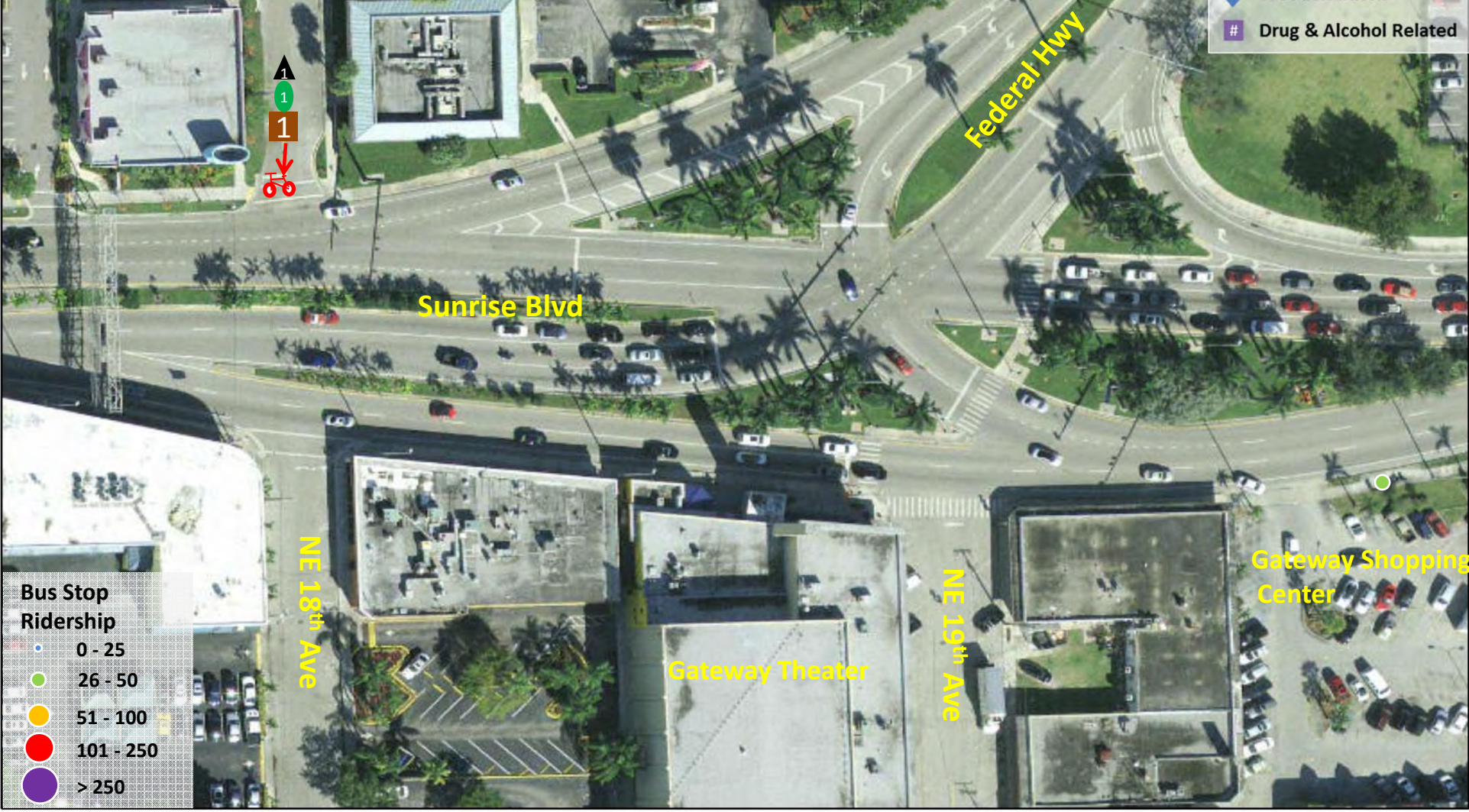
Broward MPO Pedestrian and Bicycle Safety Action Plan | Figure 9
 Pedestrian Crashes – Sunrise Boulevard from NE 14th Avenue to US 1

Crash Type






-  Rear-End Crash
-  Angle Crash
-  Left-Turn Crash
-  Sideswipe Crash
-  Bicycle Crash

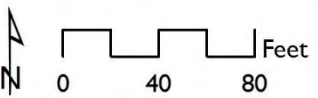
Legend

-  Total # of Crashes
-  # of Fatalities
-  # of Injured
-  Night Time Crashes
-  Wet Conditions
-  Drug & Alcohol Related








Bus Stop Ridership

-  0 - 25
-  26 - 50
-  51 - 100
-  101 - 250
-  > 250



Broward MPO Pedestrian and Bicycle Safety Action Plan | Figure 10
 Bicycle Crashes – Sunrise Boulevard from NE 14th Avenue to US 1

Crash Type






-  Rear-End Crash
-  Angle Crash
-  Left-Turn Crash
-  Sideswipe Crash
-  Bicycle Crash

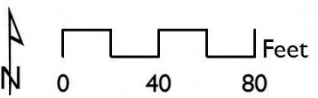
Legend

-  Total # of Crashes
-  # of Fatalities
-  # of Injured
-  Night Time Crashes
-  Wet Conditions
-  Drug & Alcohol Related

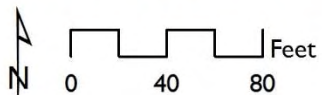


Bus Stop Ridership

-  0 - 25
-  26 - 50
-  51 - 100
-  101 - 250
-  > 250








Broward MPO Pedestrian and Bicycle Safety Action Plan | Figure 11
 Pedestrian Crashes – Sunrise Boulevard from NE 14th Avenue to US 1



Broward MPO Pedestrian and Bicycle Safety Action Plan
 Bicycle Crashes – Sunrise Boulevard from NE 14th Avenue to US 1

Crash Type






-  Rear-End Crash
-  Angle Crash
-  Left-Turn Crash
-  Sideswipe Crash
-  Bicycle Crash

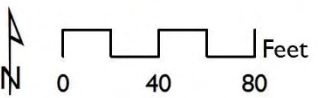
Legend

-  Total # of Crashes
-  # of Fatalities
-  # of Injured
-  Night Time Crashes
-  Wet Conditions
-  Drug & Alcohol Related








Bus Stop Ridership

-  0 - 25
-  26 - 50
-  51 - 100
-  101 - 250
-  > 250



Broward MPO Pedestrian and Bicycle Safety Action Plan | Figure
Pedestrian Crashes – Sunrise Boulevard from NE 14th Avenue to US 1 | **13**

Crash Type






-  Rear-End Crash
-  Angle Crash
-  Left-Turn Crash
-  Sideswipe Crash
-  Bicycle Crash

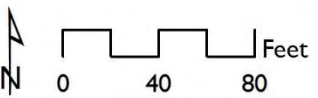
Legend

-  Total # of Crashes
-  # of Fatalities
-  # of Injured
-  Night Time Crashes
-  Wet Conditions
-  Drug & Alcohol Related








Bus Stop Ridership

-  0 - 25
-  26 - 50
-  51 - 100
-  101 - 250
-  > 250



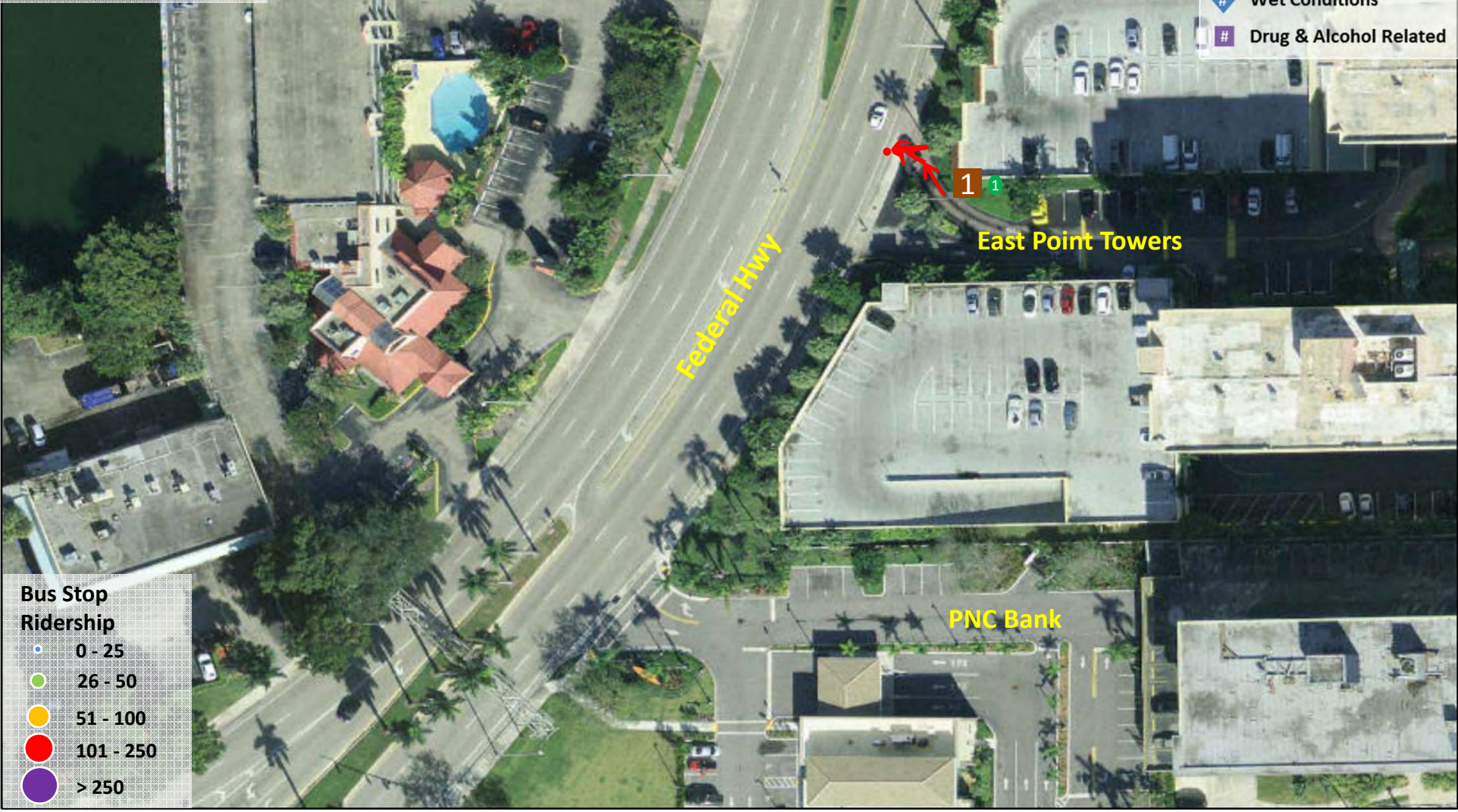
Broward MPO Pedestrian and Bicycle Safety Action Plan | Figure
Bicycle Crashes – Sunrise Boulevard from NE 14th Avenue to US 1 | **14**

Crash Type






-  Rear-End Crash
-  Angle Crash
-  Left-Turn Crash
-  Sideswipe Crash
-  Bicycle Crash

Legend

-  Total # of Crashes
-  # of Fatalities
-  # of Injured
-  Night Time Crashes
-  Wet Conditions
-  Drug & Alcohol Related








Bus Stop Ridership

-  0 - 25
-  26 - 50
-  51 - 100
-  101 - 250
-  > 250

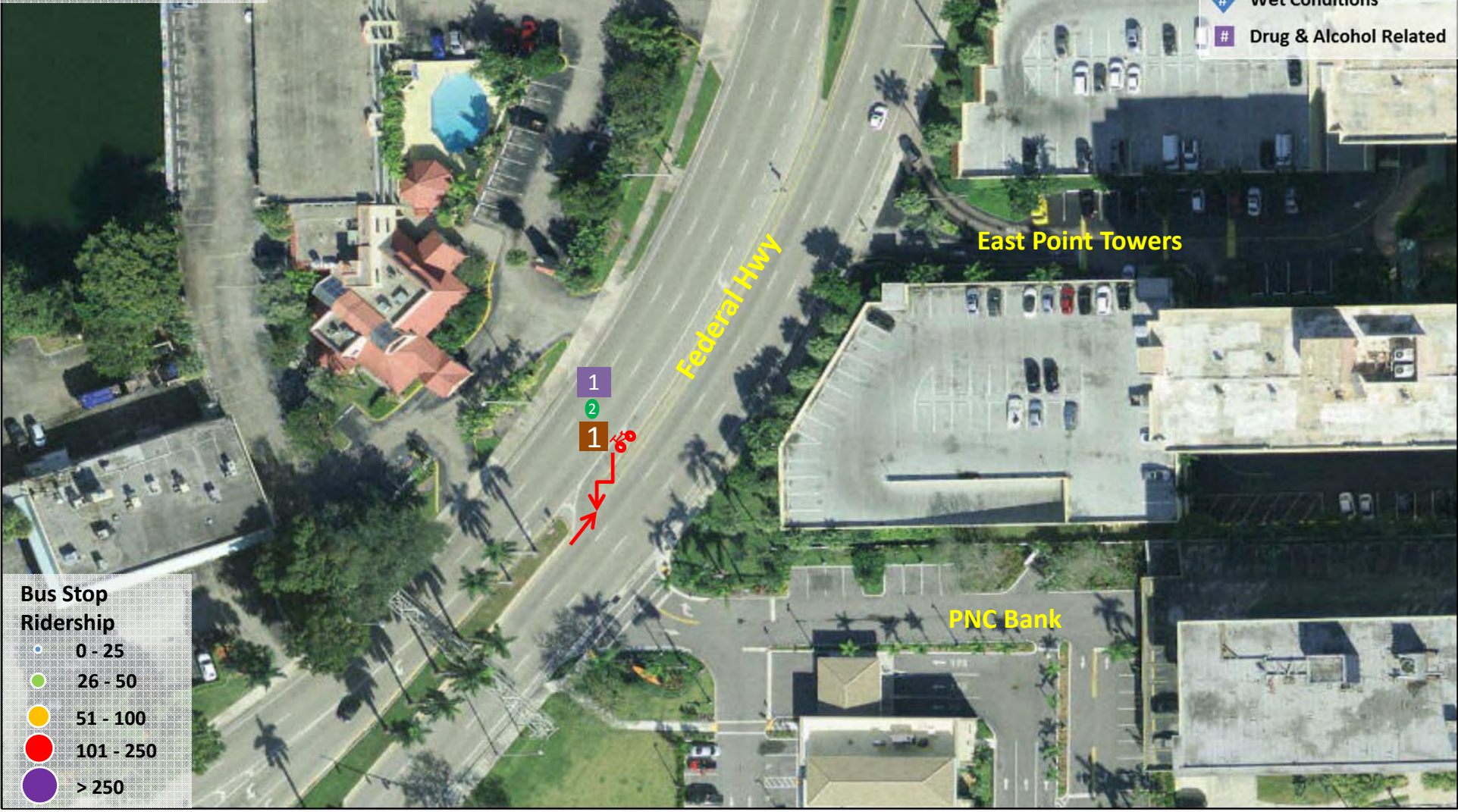
Broward MPO Pedestrian and Bicycle Safety Action Plan | Figure
Pedestrian Crashes – Sunrise Boulevard from NE 14th Avenue to US 1 | **15**

Crash Type






-  Rear-End Crash
-  Angle Crash
-  Left-Turn Crash
-  Sideswipe Crash
-  Bicycle Crash

Legend

-  Total # of Crashes
-  # of Fatalities
-  # of Injured
-  Night Time Crashes
-  Wet Conditions
-  Drug & Alcohol Related



Bus Stop Ridership

-  0 - 25
-  26 - 50
-  51 - 100
-  101 - 250
-  > 250

Broward MPO Pedestrian and Bicycle Safety Action Plan | Figure
Bicycle Crashes – Sunrise Boulevard from NE 14th Avenue to US 1 | **16**