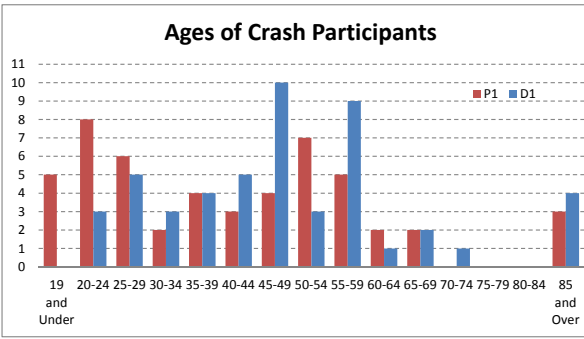
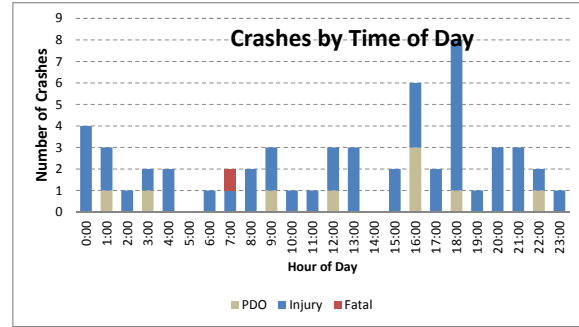
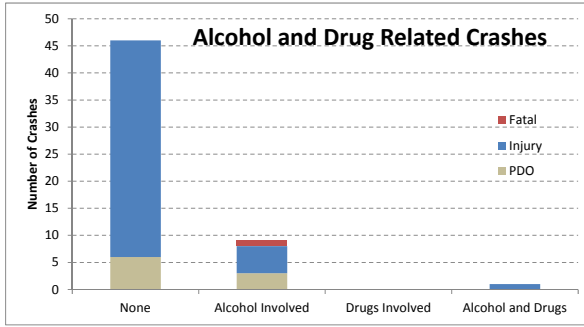
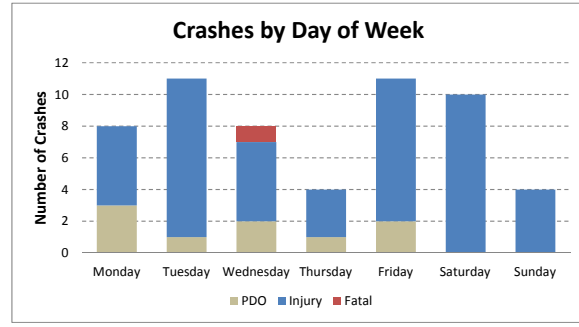
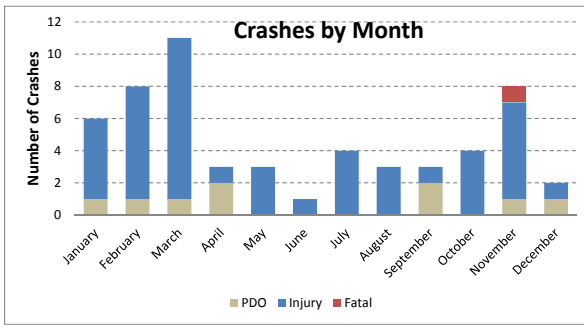
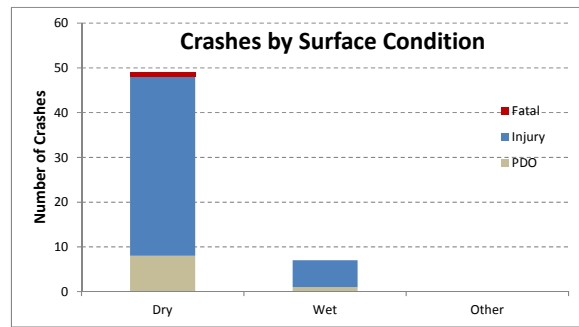
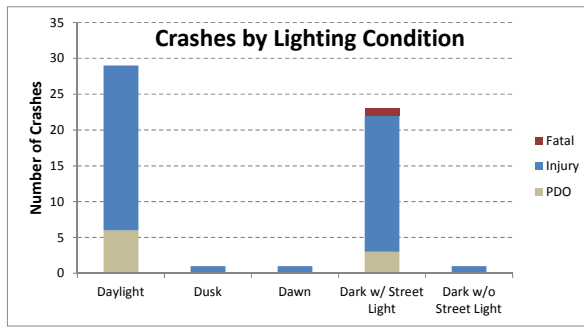
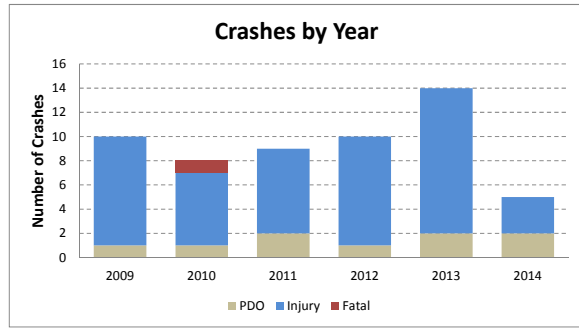
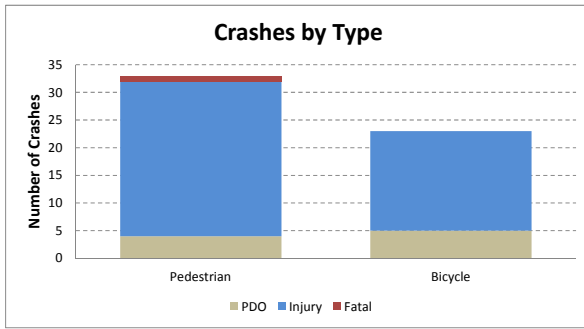


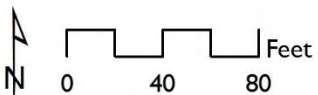
CRASH ANALYSIS - Broward Blvd. at Andrews Ave.

		Analysis Year					Severity			Total	Average	Percent	
		2010	2011	2012	2013	2014	2015	PDO	Injury				Fatal
Type of Crash	Pedestrian	5	5	5	5	9	4	4	28	1	33	5.50	58.9%
	Bicycle	5	3	4	5	5	1	5	18	0	23	3.83	41.1%
	Total Crashes	10	8	9	10	14	5	9	46	1	56	9.33	100.0%
Crash Severity	PDO	1	1	2	1	2	2				9	1.50	16.1%
	Injury	9	6	7	9	12	3				46	7.67	82.1%
	Fatal	0	1	0	0	0	0				1	0.17	1.8%
Light Conditions	Daylight	4	4	5	6	6	4	6	23	0	29	4.83	51.8%
	Dusk	0	0	1	0	0	0	0	1	0	1	0.17	1.8%
	Dawn	1	0	0	0	0	0	0	1	0	1	0.17	1.8%
	Dark w/ Street Light	4	4	3	3	8	1	3	19	1	23	3.83	41.1%
	Dark w/o Street Light	1	0	0	0	0	0	0	1	0	1	0.17	1.8%
	Unknown	0	0	0	1	0	0	0	1	0	1	0.17	1.8%
Surface Condition	Dry	9	6	9	7	13	5	8	40	1	49	8.17	87.5%
	Wet	1	2	0	3	1	0	1	6	0	7	1.17	12.5%
	Other	0	0	0	0	0	0	0	0	0	0	0.00	0.0%
Month	January	1	0	0	3	1	1	1	5	0	6	1.00	10.7%
	February	0	1	1	3	1	2	1	7	0	8	1.33	14.3%
	March	4	2	0	2	3	0	1	10	0	11	1.83	19.6%
	April	1	0	0	0	1	1	2	1	0	3	0.50	5.4%
	May	0	0	2	0	1	0	0	3	0	3	0.50	5.4%
	June	0	0	0	0	1	0	0	1	0	1	0.17	1.8%
	July	1	2	0	0	0	1	0	4	0	4	0.67	7.1%
	August	0	0	1	0	2	0	0	3	0	3	0.50	5.4%
	September	1	0	2	0	0	0	2	1	0	3	0.50	5.4%
	October	1	1	0	2	0	0	0	4	0	4	0.67	7.1%
	November	1	2	3	0	2	0	1	6	1	8	1.33	14.3%
	December	0	0	0	0	2	0	1	1	0	2	0.33	3.6%
Day of Week	Monday	1	1	0	0	4	2	3	5	0	8	1.33	14.3%
	Tuesday	2	1	1	4	2	1	1	10	0	11	1.83	19.6%
	Wednesday	1	2	2	1	1	1	2	5	1	8	1.33	14.3%
	Thursday	1	1	0	2	0	0	1	3	0	4	0.67	7.1%
	Friday	2	1	3	1	4	0	2	9	0	11	1.83	19.6%
	Saturday	2	1	2	2	2	1	0	10	0	10	1.67	17.9%
	Sunday	1	1	1	0	1	0	0	4	0	4	0.67	7.1%
Hour of Day	0:00	1	1	1	0	0	1	0	4	0	4	0.67	7.1%
	1:00	1	0	1	1	0	0	1	2	0	3	0.50	5.4%
	2:00	0	0	0	0	1	0	0	1	0	1	0.17	1.8%
	3:00	0	1	0	0	1	0	1	1	0	2	0.33	3.6%
	4:00	0	0	0	0	2	0	0	2	0	2	0.33	3.6%
	5:00	0	0	0	0	0	0	0	0	0	0	0.00	0.0%
	6:00	1	0	0	0	0	0	0	1	0	1	0.17	1.8%
	7:00	0	1	0	0	1	0	0	1	1	2	0.33	3.6%
	8:00	0	0	0	2	0	0	0	2	0	2	0.33	3.6%
	9:00	0	0	2	0	1	0	1	2	0	3	0.50	5.4%
	10:00	0	1	0	0	0	0	0	1	0	1	0.17	1.8%
	11:00	0	0	0	0	1	0	0	1	0	1	0.17	1.8%
	12:00	1	0	0	1	0	1	1	2	0	3	0.50	5.4%
	13:00	0	0	0	1	2	0	0	3	0	3	0.50	5.4%
	14:00	0	0	0	0	0	0	0	0	0	0	0.00	0.0%
	15:00	1	0	1	0	0	0	0	2	0	2	0.33	3.6%
	16:00	1	0	1	1	1	2	3	3	0	6	1.00	10.7%
	17:00	0	1	0	1	0	0	0	2	0	2	0.33	3.6%
	18:00	1	2	2	1	2	0	1	7	0	8	1.33	14.3%
	19:00	0	0	0	0	1	0	0	1	0	1	0.17	1.8%
	20:00	3	0	0	0	0	0	0	3	0	3	0.50	5.4%
	21:00	0	1	0	1	1	0	0	3	0	3	0.50	5.4%
	22:00	0	0	1	0	0	1	1	1	0	2	0.33	3.6%
	23:00	0	0	0	1	0	0	0	1	0	1	0.17	1.8%
Alcohol	None	9	6	5	8	13	5	6	40	0	46	7.67	82.1%
	Alcohol Involved	1	2	4	1	1	0	3	5	1	9	1.50	16.1%
	Drugs Involved	0	0	0	0	0	0	0	0	0	0	0.00	0.0%
	Alcohol and Drugs	0	0	0	1	0	0	0	1	0	1	0.17	1.8%
	Undetermined	0	0	0	0	0	0	0	0	0	0	0.00	0.0%

Age of Ped/Bicyclist	19 and Under	0	1	1	1	2	0				5	0.83	8.9%
	20-24	2	0	0	1	4	1				8	1.33	14.3%
	25-29	1	1	0	2	2	0				6	1.00	10.7%
	30-34	0	1	0	0	1	0				2	0.33	3.6%
	35-39	1	0	1	1	1	0				4	0.67	7.1%
	40-44	1	0	0	1	1	0				3	0.50	5.4%
	45-49	0	2	1	1	0	0				4	0.67	7.1%
	50-54	1	1	2	2	1	0				7	1.17	12.5%
	55-59	1	1	1	1	1	0				5	0.83	8.9%
	60-64	0	1	1	0	0	0				2	0.33	3.6%
	65-69	2	0	0	0	0	0				2	0.33	3.6%
	70-74	0	0	0	0	0	0				0	0.00	0.0%
	75-79	0	0	0	0	0	0				0	0.00	0.0%
	80-84	0	0	0	0	0	0				0	0.00	0.0%
	85 and Over	1	0	1	0	0	1				3	0.50	5.4%
Age of Driver	19 and Under	0	0	0	0	0	0				0	0.00	0.0%
	20-24	1	0	0	1	1	0				3	0.50	5.4%
	25-29	1	1	0	2	1	0				5	0.83	8.9%
	30-34	1	0	0	1	0	1				3	0.50	5.4%
	35-39	0	1	2	0	1	0				4	0.67	7.1%
	40-44	1	1	1	1	1	0				5	0.83	8.9%
	45-49	2	2	1	1	3	1				10	1.67	17.9%
	50-54	0	0	0	0	3	0				3	0.50	5.4%
	55-59	1	2	2	1	2	1				9	1.50	16.1%
	60-64	0	0	1	0	0	0				1	0.17	1.8%
	65-69	1	0	0	1	0	0				2	0.33	3.6%
	70-74	1	0	0	0	0	0				1	0.17	1.8%
	75-79	0	0	0	0	0	0				0	0.00	0.0%
	80-84	0	0	0	0	0	0				0	0.00	0.0%
	85 and Over	1	0	1	1	0	1				4	0.67	7.1%

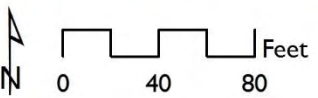
CRASH ANALYSIS - Broward Blvd. at Andrews Ave.



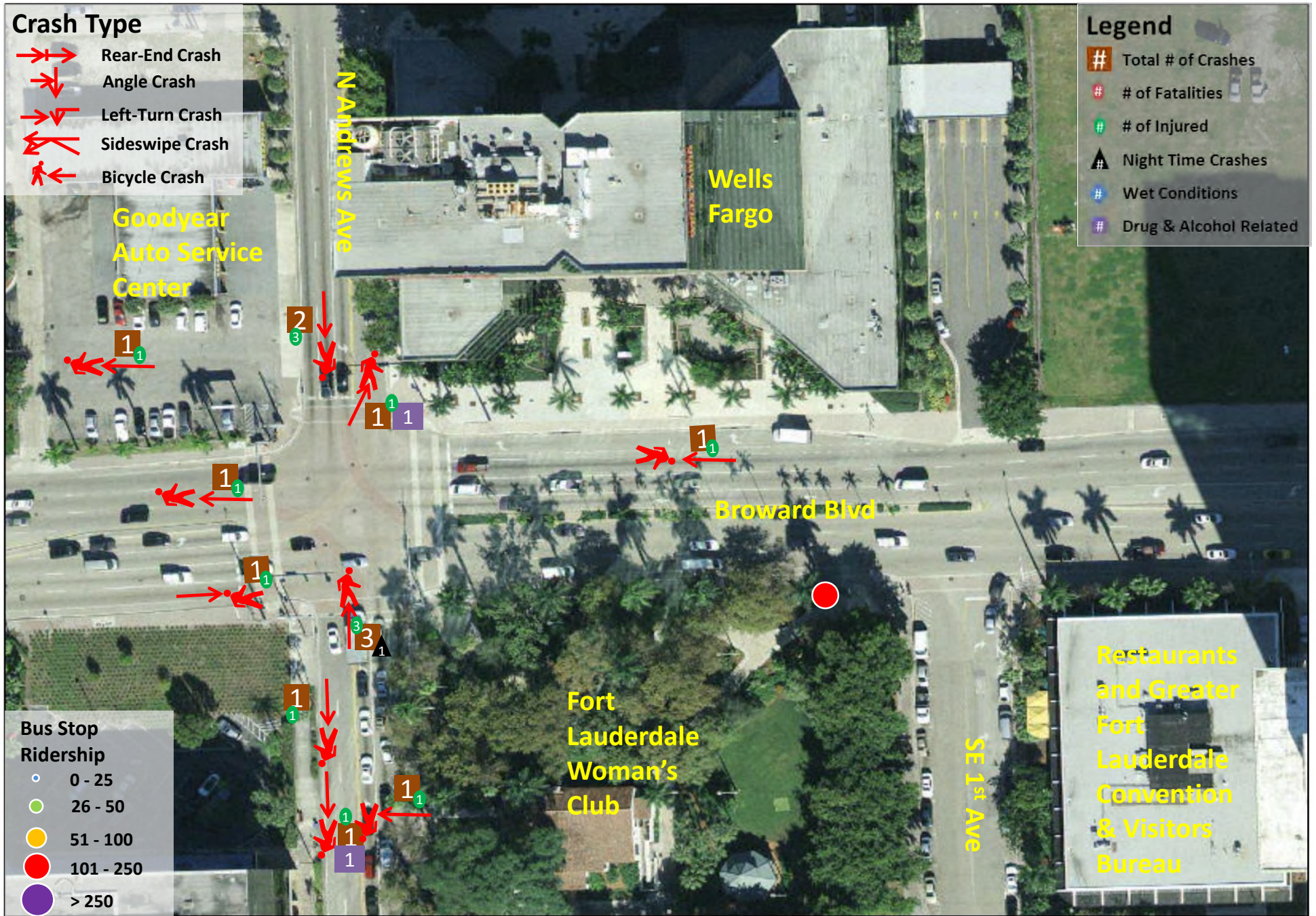


Broward MPO Pedestrian and Bicycle Safety Action Plan
Pedestrian Crashes - Andrews Avenue and Broward Boulevard

Figure
1

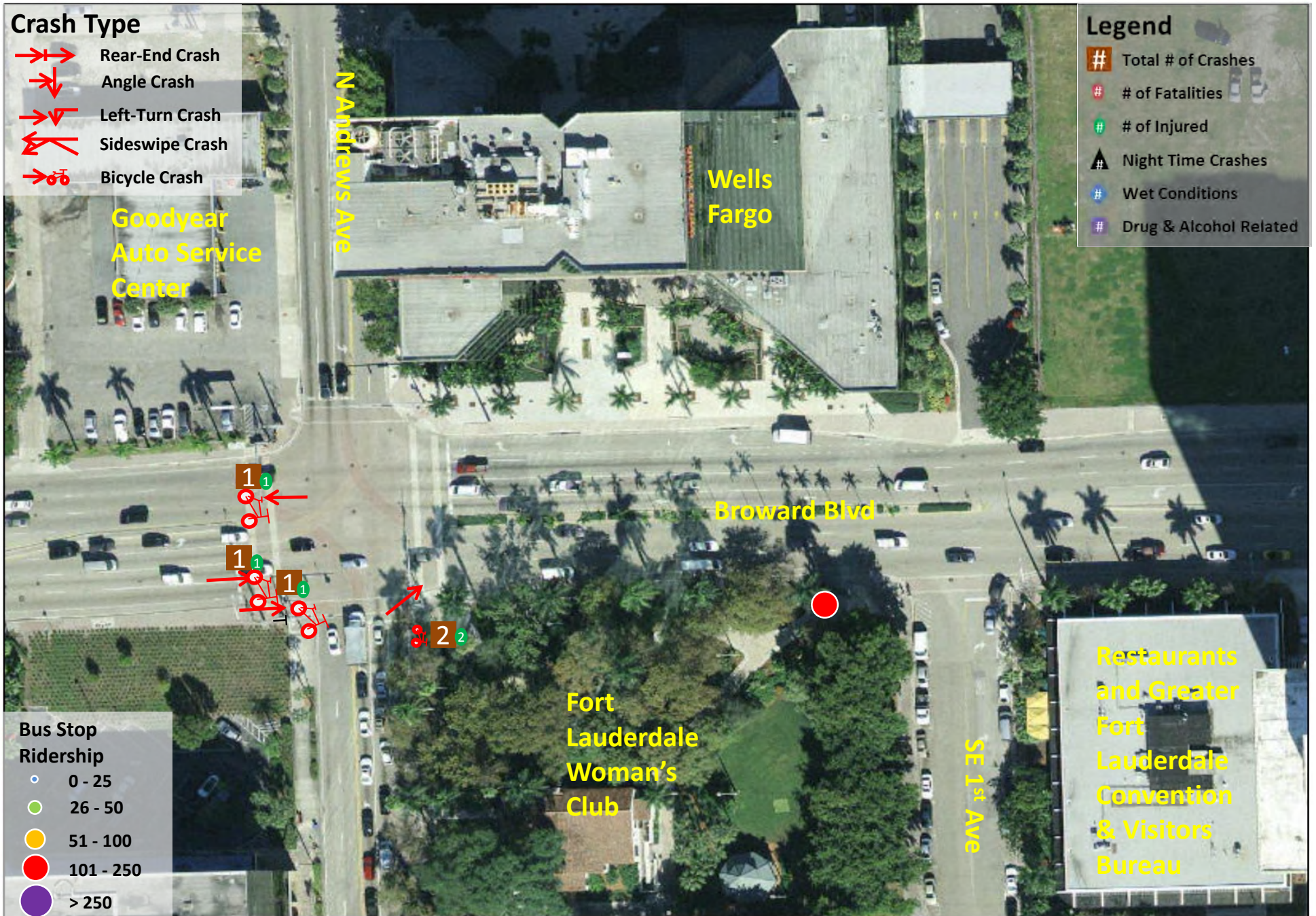


Broward MPO Pedestrian and Bicycle Safety Action Plan | Figure
Bicycle Crashes - Andrews Avenue and Broward Boulevard | **2**



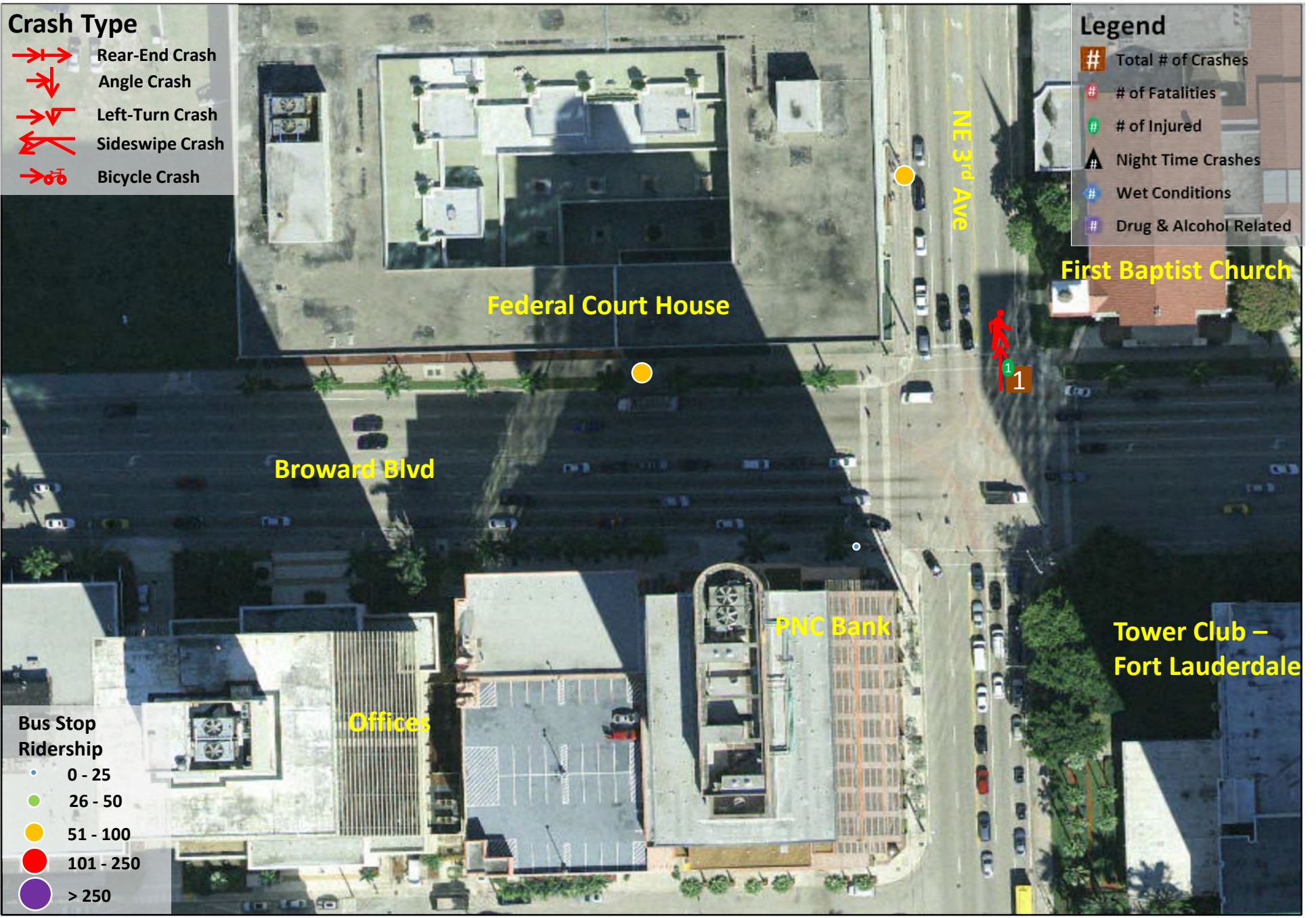
Broward MPO Pedestrian and Bicycle Safety Action Plan
 Pedestrian Crashes - Andrews Avenue and Broward Boulevard

Figure
3

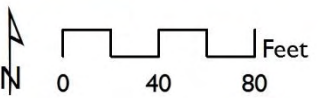
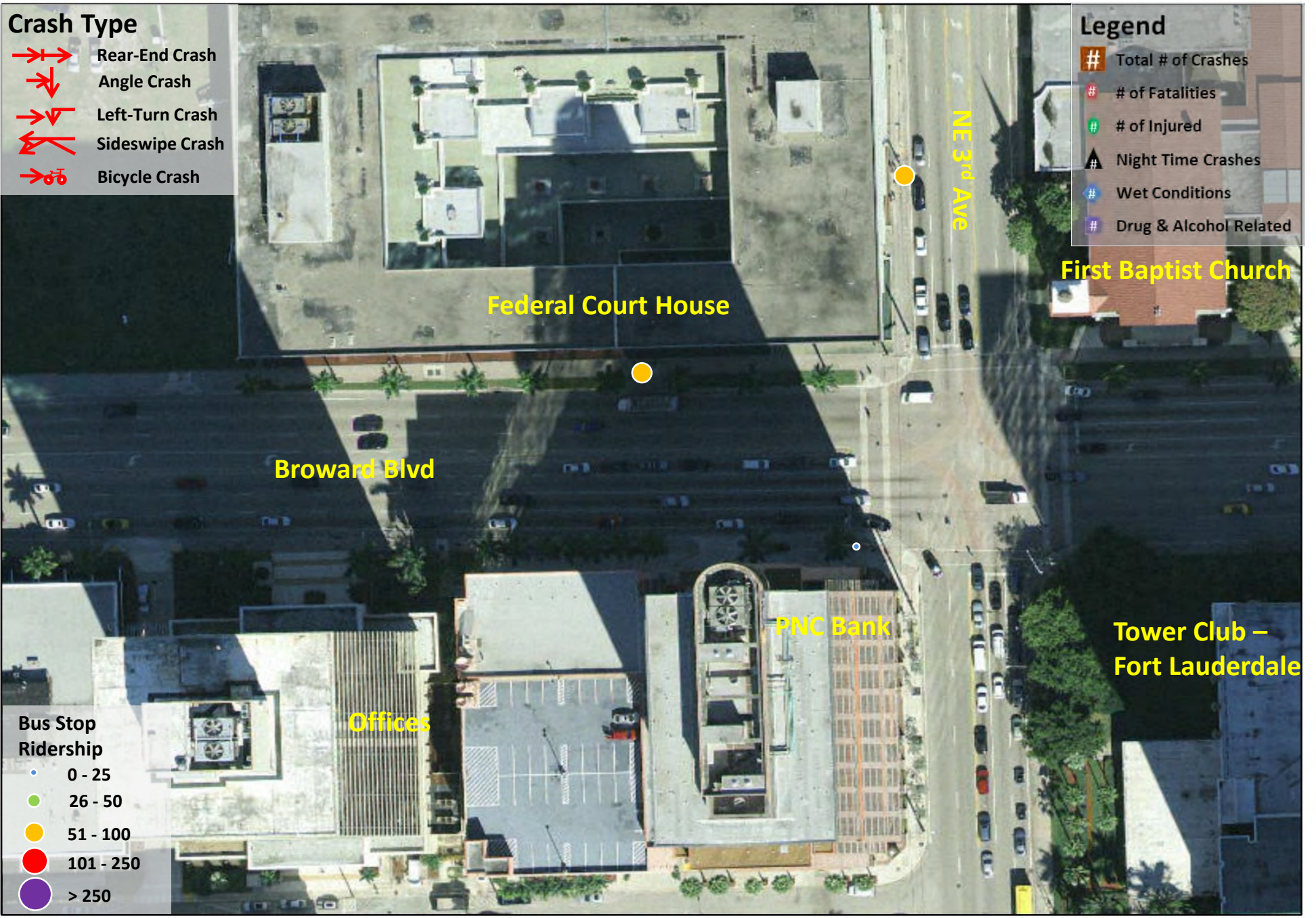


Broward MPO Pedestrian and Bicycle Safety Action Plan
 Bicycle Crashes - Andrews Avenue and Broward Boulevard

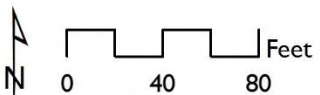
Figure
 4



Broward MPO Pedestrian and Bicycle Safety Action Plan | Figure 5
 Pedestrian Crashes - Andrews Avenue and Broward Boulevard



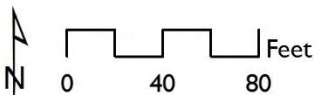
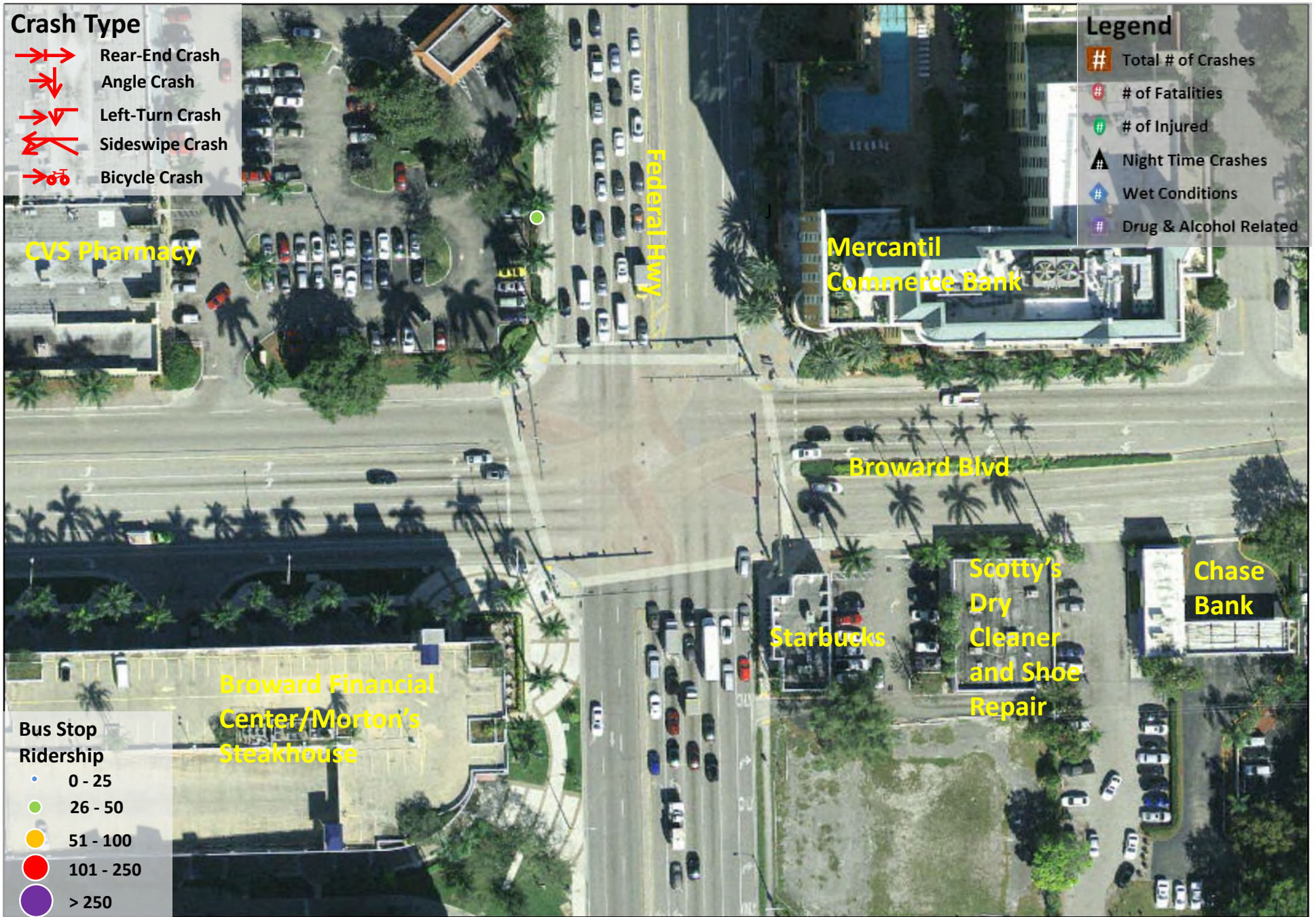
Broward MPO Pedestrian and Bicycle Safety Action Plan | Figure
Bicycle Crashes - Andrews Avenue and Broward Boulevard | **6**



Broward MPO Pedestrian and Bicycle Safety Action Plan
Pedestrian Crashes - Andrews Avenue and Broward Boulevard



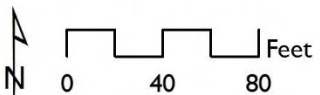
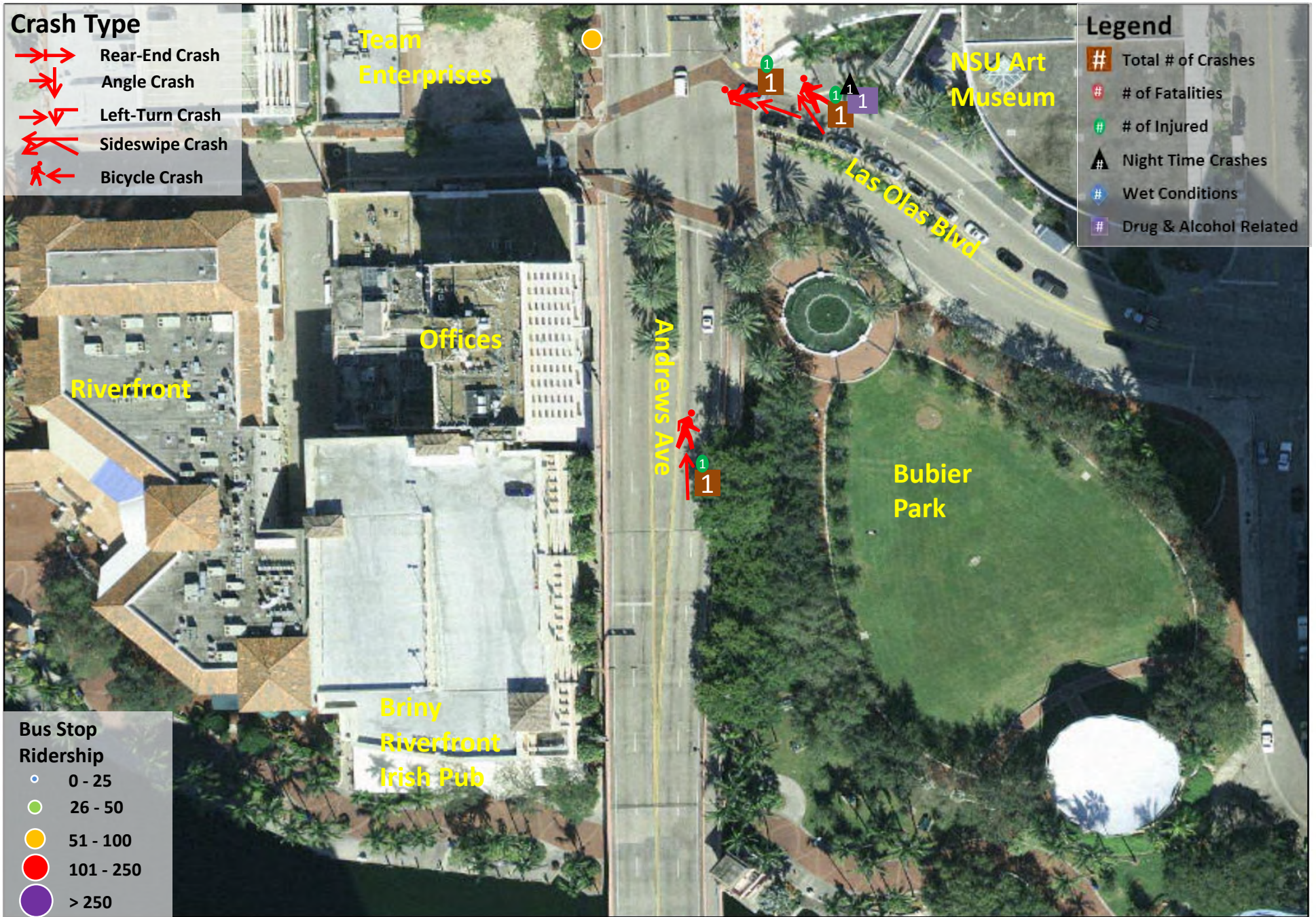
Broward MPO Pedestrian and Bicycle Safety Action Plan
 Bicycle Crashes - Andrews Avenue and Broward Boulevard



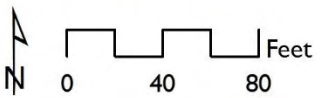
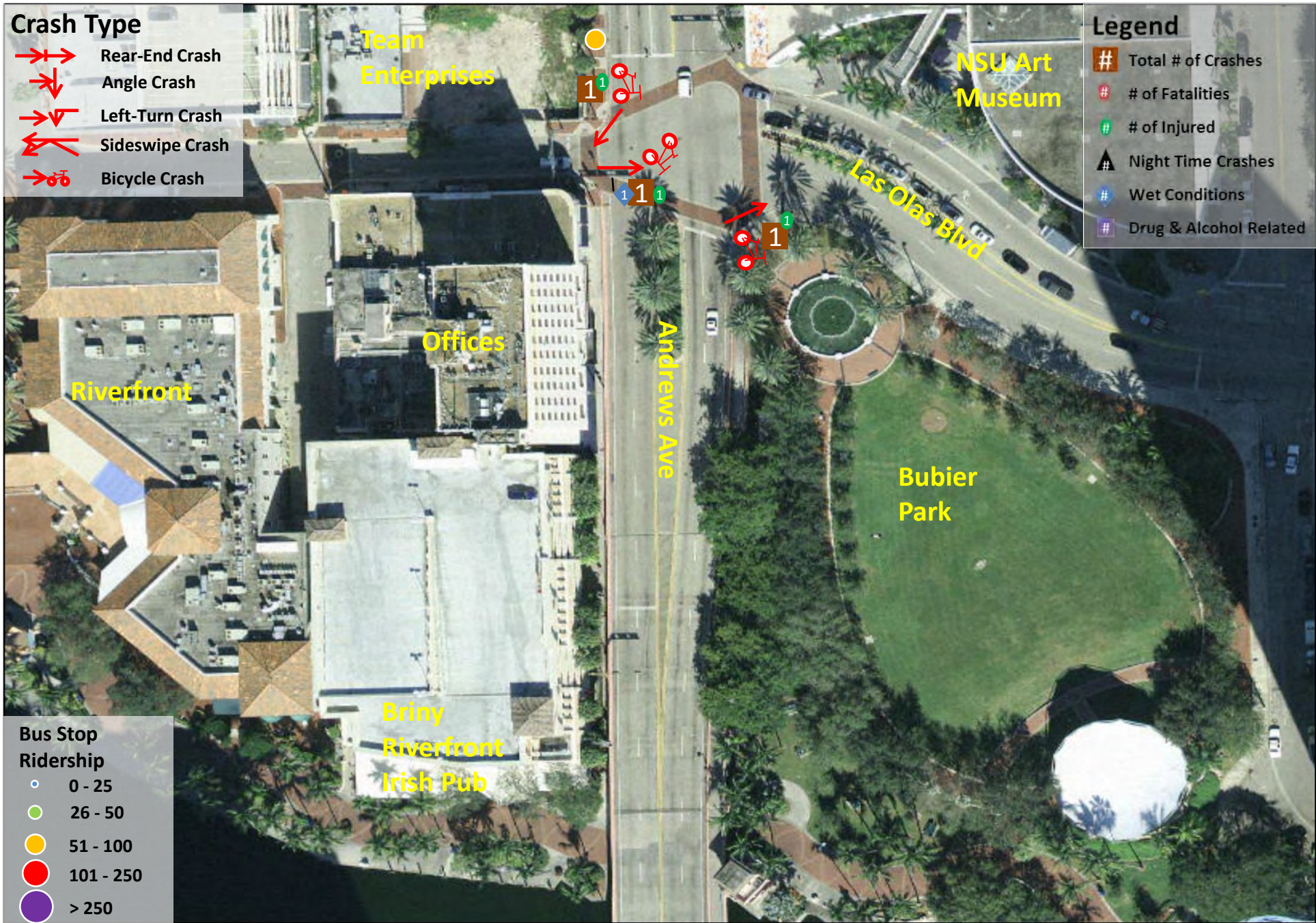
Broward MPO Pedestrian and Bicycle Safety Action Plan
Pedestrian Crashes - Andrews Avenue and Broward Boulevard



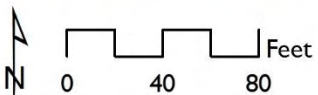
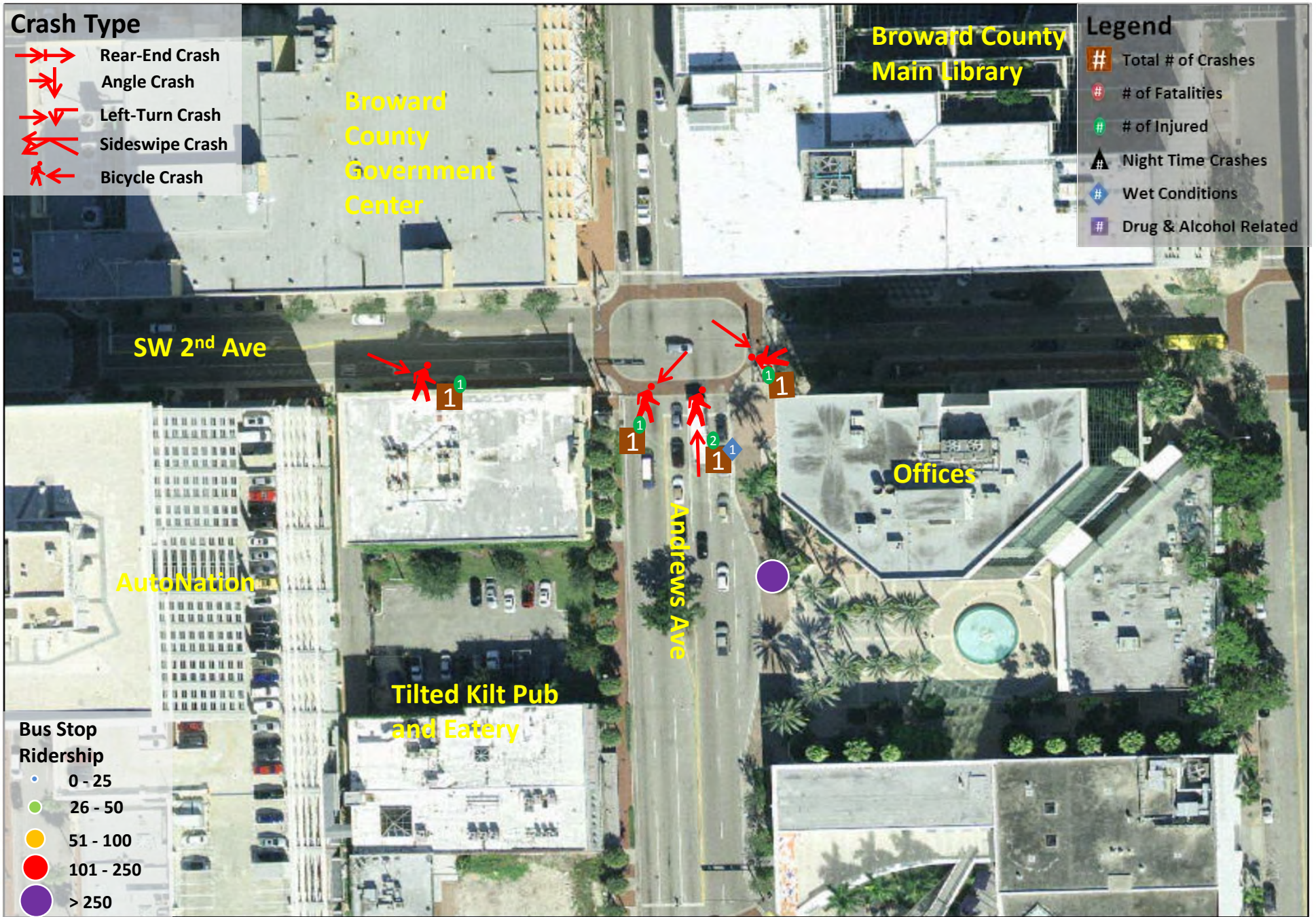
Broward MPO Pedestrian and Bicycle Safety Action Plan
Bicycle Crashes - Andrews Avenue and Broward Boulevard



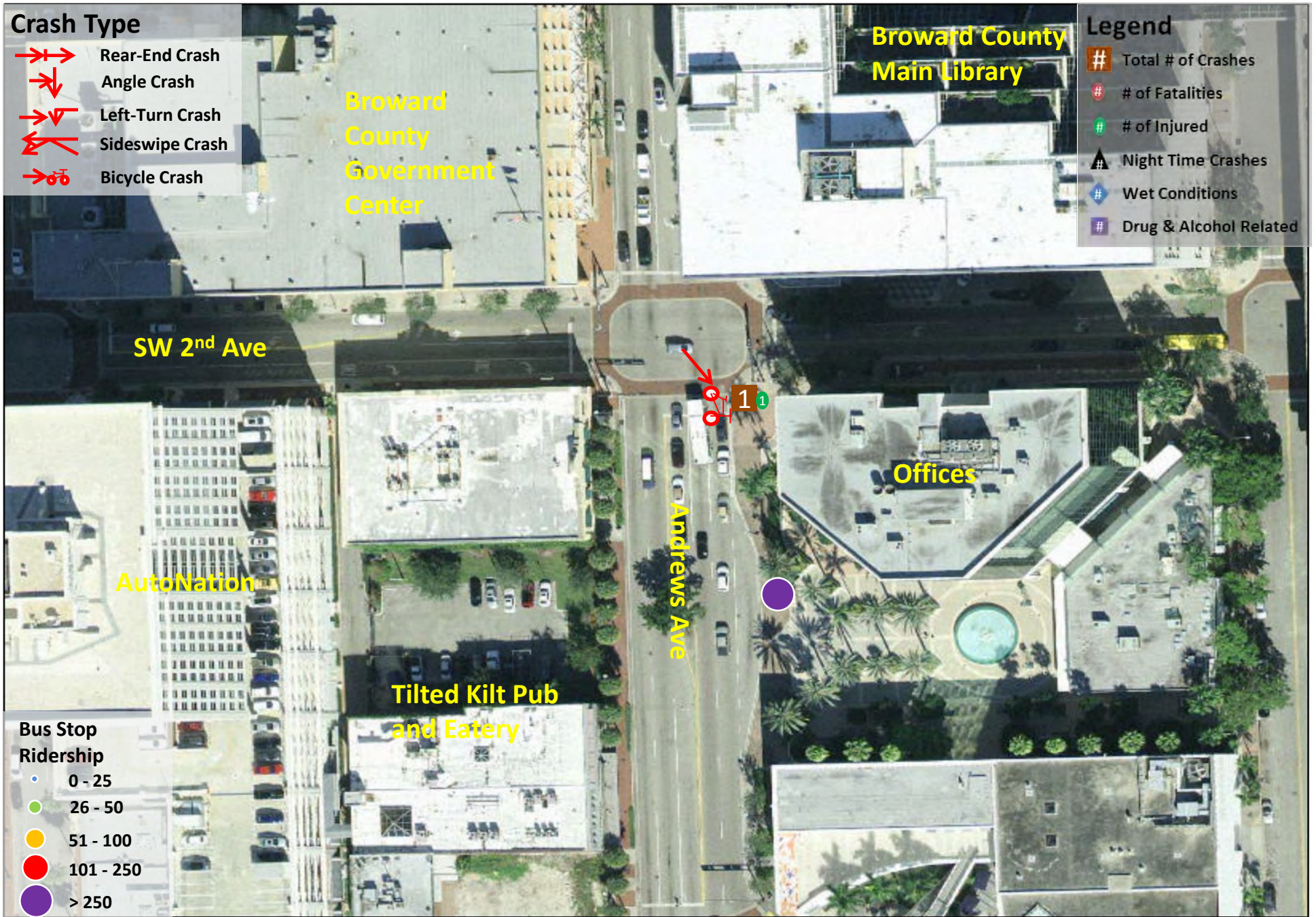
Broward MPO Pedestrian and Bicycle Safety Action Plan | Figure 11
 Pedestrian Crashes - Andrews Avenue and Broward Boulevard



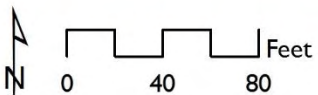
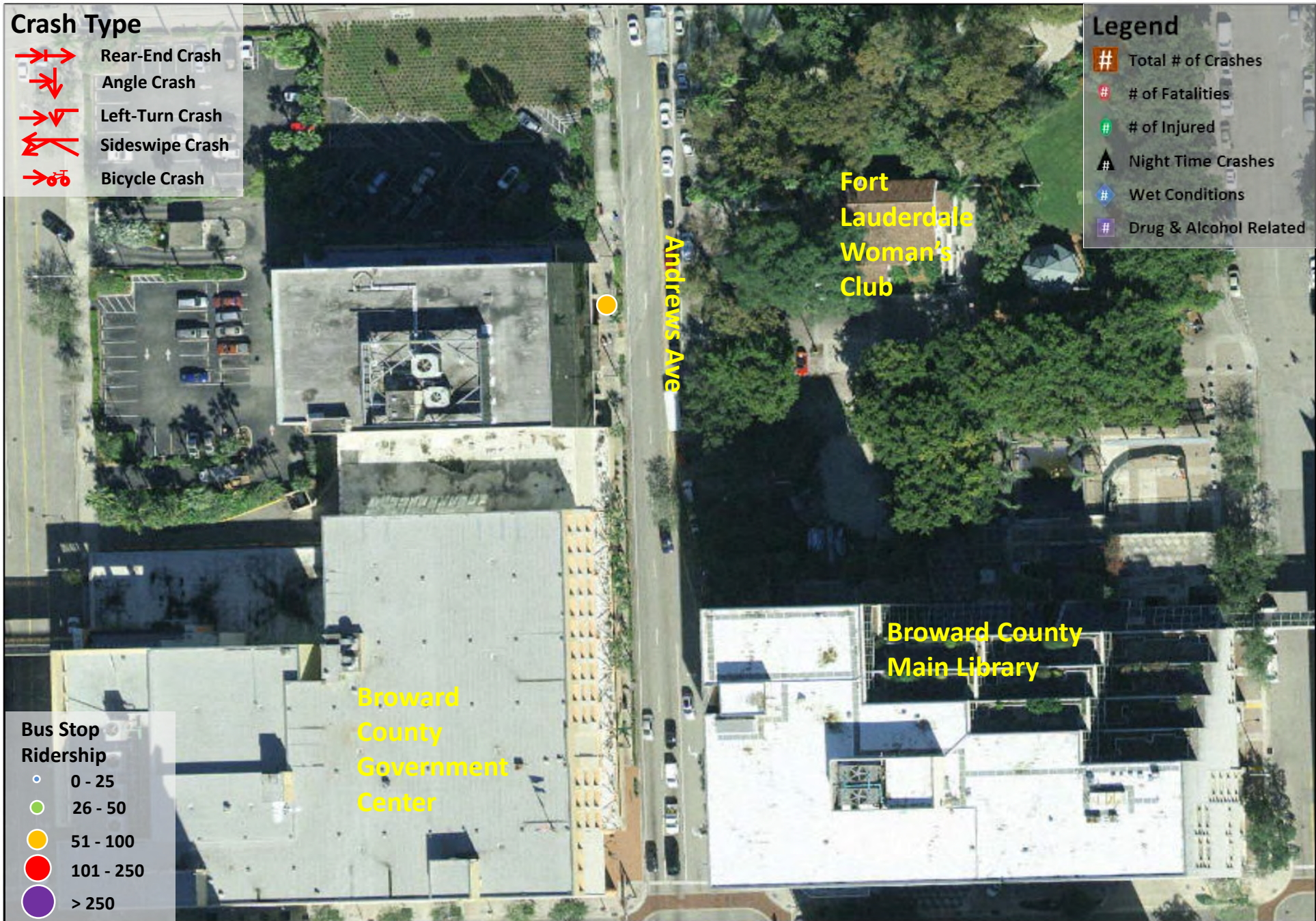
Broward MPO Pedestrian and Bicycle Safety Action Plan | Figure 12
 Bicycle Crashes - Andrews Avenue and Broward Boulevard



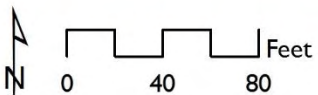
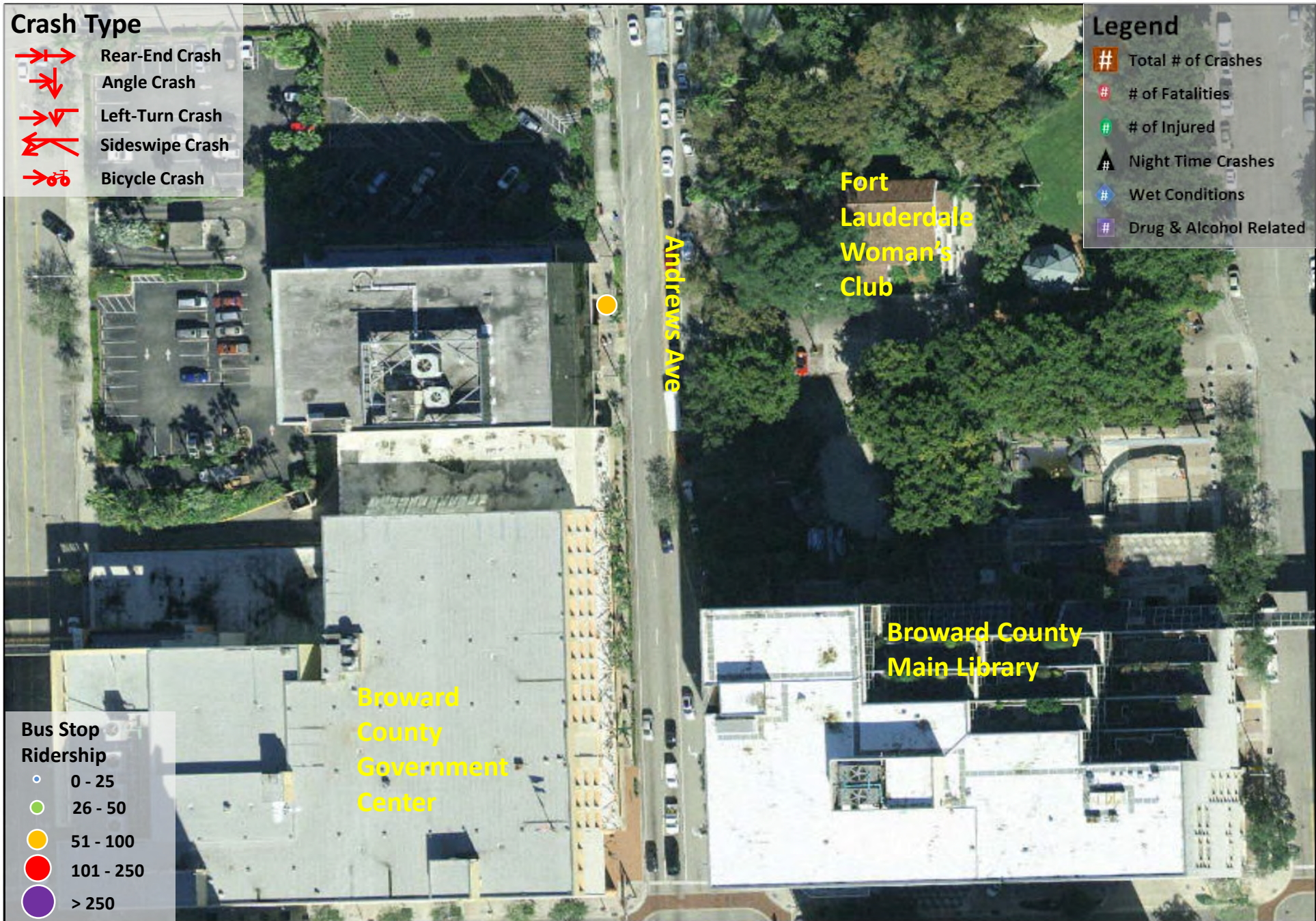
Broward MPO Pedestrian and Bicycle Safety Action Plan
Pedestrian Crashes - Andrews Avenue and Broward Boulevard



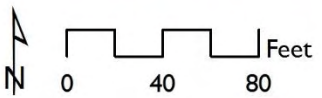
Broward MPO Pedestrian and Bicycle Safety Action Plan
 Bicycle Crashes - Andrews Avenue and Broward Boulevard



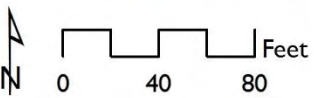
Broward MPO Pedestrian and Bicycle Safety Action Plan
Pedestrian Crashes - Andrews Avenue and Broward Boulevard



Broward MPO Pedestrian and Bicycle Safety Action Plan
Bicycle Crashes - Andrews Avenue and Broward Boulevard



Broward MPO Pedestrian and Bicycle Safety Action Plan | Figure 17
 Pedestrian Crashes - Andrews Avenue and Broward Boulevard



Broward MPO Pedestrian and Bicycle Safety Action Plan | Figure 18
 Bicycle Crashes - Andrews Avenue and Broward Boulevard