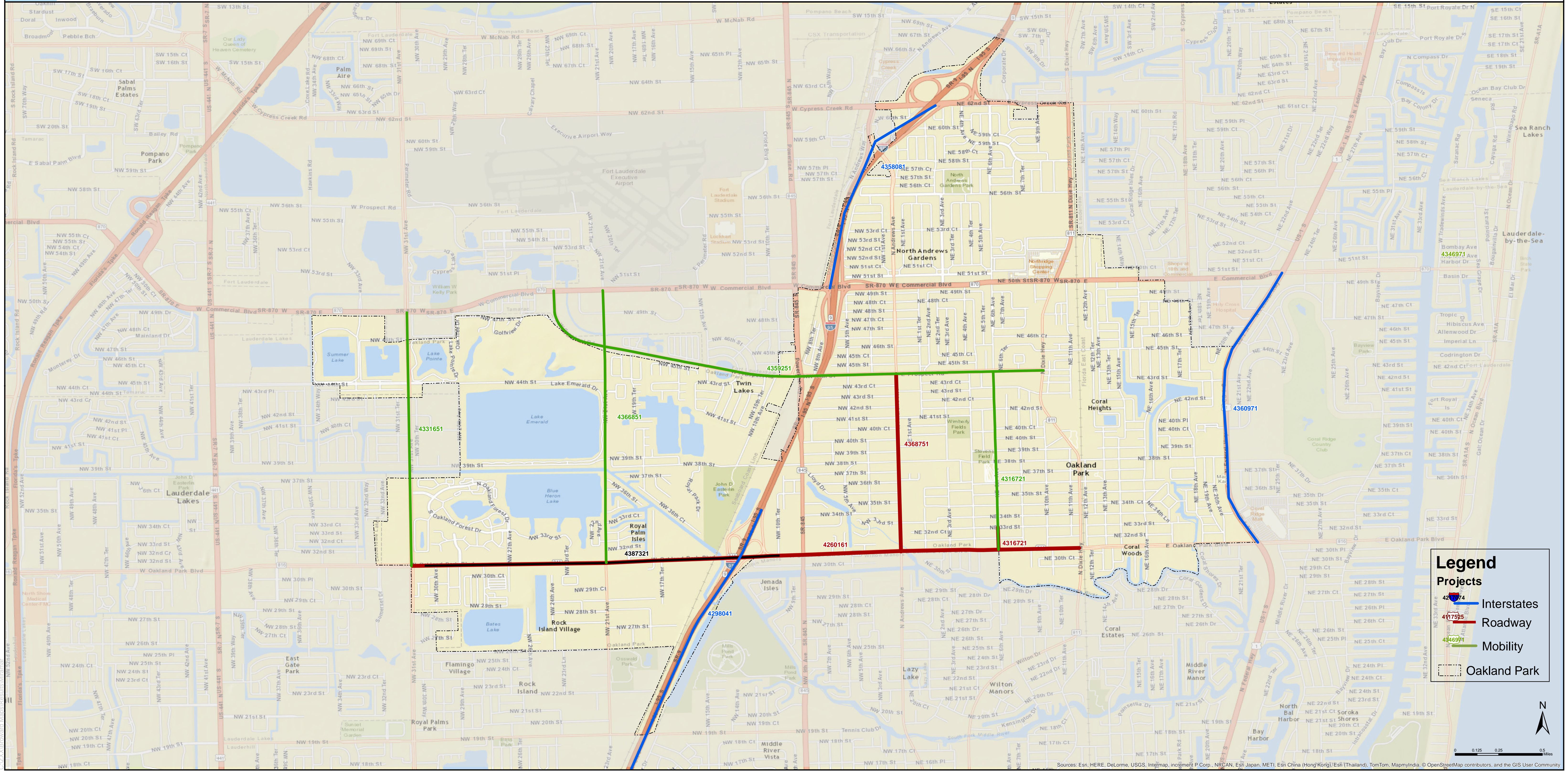


# Oakland Park 2016-2020 Transportation Improvement Program (TIP) Projects



| Project Number                     | Project Name             | Project From           | Project To                        | FY 2016-2020 Total Funding (\$) | Type of Work            |
|------------------------------------|--------------------------|------------------------|-----------------------------------|---------------------------------|-------------------------|
| 4260161                            | SR-816/Oakland Park Blvd | Corridor Study         |                                   | 123,325                         | TRANSPORTATION PLANNING |
| 4287321                            | SR-816/Oakland Park Blvd | East of 31st Ave       | East of I-95                      | 4,755,293                       | RESURFACING             |
| 4298041                            | SR-9/I-95                | SR-848/Stirling Rd     | North of SR-816/Oakland Park Blvd | 3,358,471                       | PDANDE/EMO STUDY        |
| 4316721                            | NE 6th Avenue            | SR-816/Oakland Pk Blvd | NE 33rd Street                    | 789,667                         | BIKE LANE/SIDEWALK      |
| 4358081                            | I-95                     | Commercial Blvd        | N of Cypress                      | 2,015,000                       | PDANDE/EMO STUDY        |
| 4359251                            | Prospect Rd              | Commercial Blvd        | SR 811/Dixie Hwy                  | 7,307,308                       | BIKE LANE/SIDEWALK      |
| 4368751                            | Andrews Ave              | Oakland Park Blvd      | Prospect                          | 2,795,892                       | LIGHTING                |
| 4360971                            | SR-5/US-1/Federal Hwy    | SR-816/Oakland Pk Blvd | Commercial Blvd                   | 3,448,826                       | RESURFACING             |
| 4331651                            | NW 31 Ave                | Oakland Park Blvd      | Commercial Blvd                   | 96,145                          | BIKE LANE/SIDEWALK      |
| 4366851                            | NW 21st Ave              | Oakland Park Blvd      | Commercial Blvd                   | 8,432,151                       | BIKE LANE/SIDEWALK      |
| <b>Total Funding Amounts (\$):</b> |                          |                        |                                   | <b>33,122,078</b>               |                         |

For complaints, questions or concerns about civil rights or nondiscrimination; or for special requests under the American with Disabilities Act, please contact: Christopher Ryan, Public Information Officer/Title VI Coordinator at (954) 876-0036 or ryan@browardmpo.org

### 5-Year Summary of Funding Source

| <b>Funding Source</b> | <b>2016</b>      | <b>2017</b>    | <b>2018</b>      | <b>2019</b> | <b>2020</b>       | <b>Total</b>      |
|-----------------------|------------------|----------------|------------------|-------------|-------------------|-------------------|
| <b>Federal</b>        | 1,183,950        | 960,000        | 3,228,493        | 0           | 14,533,728        | <b>19,906,171</b> |
| <b>Local</b>          | 0                | 0              | 1,795,891        | 0           | 0                 | <b>1,795,891</b>  |
| <b>State</b>          | 4,917,060        | 0              | 1,745,697        | 0           | 0                 | <b>6,662,757</b>  |
| <b>Total</b>          | <b>6,101,010</b> | <b>960,000</b> | <b>6,770,081</b> | <b>0</b>    | <b>14,533,728</b> | <b>28,364,819</b> |

**Section 1 - Roadway and Bike/Ped**

---

| Phase   | Fund Source | 2016                    | 2017     | 2018                     | 2019                         | 2020                      | Total            |
|---|-------------|-------------------------|----------|--------------------------|------------------------------|---------------------------|------------------|
| <b>ANDREWS AVENUE FROM OAKLAND PARK BLVD. TO PROSPECT ROAD - FM# 4368751 (TIP#)</b>   |             |                         |          |                          | Length: 1.013                | *Non-SIS*                 |                  |
| Type of Work: LIGHTING  |             |                         |          |                          | Lead Agency: MANAGED BY FDOT |                           |                  |
| Project Type: Imported  |             |                         |          |                          |                              |                           |                  |
| 2014 MPO TAP PRIORITY #3 LAP WITH THE CITY OF OAKLAND PARK  |             |                         |          |                          |                              |                           |                  |
| PE  | TALT        | 5,000                   | 0        | 0                        | 0                            | 0                         | 5,000            |
| CST   | TALT        | 0                       | 0        | 429,801                  | 0                            | 0                         | 429,801          |
| CST   | LF          | 0                       | 0        | 1,795,891                | 0                            | 0                         | 1,795,891        |
| CST   | TALU        | 0                       | 0        | 565,200                  | 0                            | 0                         | 565,200          |
| <b>Total</b>  |             | <b>5,000</b>            | <b>0</b> | <b>2,790,892</b>         | <b>0</b>                     | <b>0</b>                  | <b>2,795,892</b> |
|   |             | <i>Prior Years Cost</i> |          | <i>Future Years Cost</i> |                              | <i>Total Project Cost</i> |                  |
|   |             |                         |          |                          |                              |                           | 2,795,892        |
| <b>BROWARD COUNTY MOBILITY PROJECTS - FM# 4331651 (TIP#)</b>  |             |                         |          |                          |                              | *Non-SIS*                 |                  |
| Type of Work: SIDEWALK  |             |                         |          |                          | Lead Agency: FDOT            |                           |                  |
| Project Type: State Managed   |             |                         |          |                          |                              |                           |                  |
| SIDEWALKS AND BIKE LANES PROJECTS IN VARIOUS CITIES COUNTYWIDE - CST UNDERWAY. FUNDING IN 2016 ADDED TO ADVANCE CONSTRUCTION. |             |                         |          |                          |                              |                           |                  |
| ENV   | SA          | 96,145                  | 0        | 0                        | 0                            | 0                         | 96,145           |
| <b>Total</b>  |             | <b>96,145</b>           | <b>0</b> | <b>0</b>                 | <b>0</b>                     | <b>0</b>                  | <b>96,145</b>    |
|   |             | <i>Prior Years Cost</i> |          | <i>Future Years Cost</i> |                              | <i>Total Project Cost</i> |                  |
|   |             |                         |          |                          |                              |                           | 96,145           |
| <b>NE 6TH AVENUE FROM FR SR-816/OAKLAND PK BLVD TO NE 33RD STREET - FM# 4316721 (TIP#)</b>                                    |             |                         |          |                          |                              | *Non-SIS*                 |                  |
| Type of Work: SIDEWALK  |             |                         |          |                          | Lead Agency: FDOT            |                           |                  |
| Project Type: Imported  |             |                         |          |                          |                              |                           |                  |
| PE  | SU          | 90,000                  | 0        | 0                        | 0                            | 0                         | 90,000           |
| CST   | DS          | 0                       | 0        | 167,245                  | 0                            | 0                         | 167,245          |
| CST   | SA          | 0                       | 0        | 315,861                  | 0                            | 0                         | 315,861          |
| CST   | DDR         | 0                       | 0        | 216,561                  | 0                            | 0                         | 216,561          |
| <b>Total</b>  |             | <b>90,000</b>           | <b>0</b> | <b>699,667</b>           | <b>0</b>                     | <b>0</b>                  | <b>789,667</b>   |
|   |             | <i>Prior Years Cost</i> |          | <i>Future Years Cost</i> |                              | <i>Total Project Cost</i> |                  |
|   |             |                         |          |                          |                              |                           | 789,667          |

| Phase  | Fund Source | 2016                     | 2017                     | 2018                      | 2019                         | 2020             | Total            |           |
|--|-------------|--------------------------|--------------------------|---------------------------|------------------------------|------------------|------------------|-----------|
| <b>NW 21ST AVE FROM OAKLAND PARK BLVD. TO COMMERCIAL BLVD. - FM# 4366851 (TIP# )</b>   |             |                          |                          |                           | Length: 1.560                | *Non-SIS*        |                  |           |
| Type of Work: BIKE LANE/SIDEWALK   |             |                          |                          |                           | Lead Agency: MANAGED BY FDOT |                  |                  |           |
| Project Type: Imported   |             |                          |                          |                           |                              |                  |                  |           |
| COMPLETE STREETS PROJECT INCLUDES WIDENING TO PROVIDE 5' BIKE LANE WITH 2' BUFFER ON BOTH SIDES OF THE ROAD & BRIDGE REPLACEMENT OF BRIDGE #84066 2014 MPO PRIORITY #5 PREVIOUSLY PROGRAMMED AS 433433-1 |             |                          |                          |                           |                              |                  |                  |           |
| PE   | SA          | 0                        | 960,000                  | 0                         | 0                            | 0                | 960,000          |           |
| CST  | SU          | 0                        | 0                        | 0                         | 0                            | 7,178,651        | 7,178,651        |           |
| CST  | SA          | 0                        | 0                        | 0                         | 0                            | 293,500          | 293,500          |           |
| <b>Total</b>   |             | <b>0</b>                 | <b>960,000</b>           | <b>0</b>                  | <b>0</b>                     | <b>7,472,151</b> | <b>8,432,151</b> |           |
| <i>Prior Years Cost</i>  |             | <i>Future Years Cost</i> |                          | <i>Total Project Cost</i> |                              |                  | 8,432,151        |           |
| <b>PROSPECT RD. FROM COMMERCIAL BLVD. TO SR-811 DIXIE HWY - FM# 4359251 (TIP# )</b>  |             |                          |                          |                           | Length: 2.738                | *Non-SIS*        |                  |           |
| Type of Work: BIKE LANE/SIDEWALK   |             |                          |                          |                           | Lead Agency: MANAGED BY FDOT |                  |                  |           |
| Project Type: Imported   |             |                          |                          |                           |                              |                  |                  |           |
| FOUR FOOT BICYCLE LANES NORTHBOUND AND SOUTHBOUND 2014 MPO PRIORITY #3   |             |                          |                          |                           |                              |                  |                  |           |
| RRU  | SA          | 0                        | 0                        | 50,000                    | 0                            | 0                | 50,000           |           |
| PE   | SA          | 0                        | 0                        | 195,731                   | 0                            | 0                | 195,731          |           |
| CST  | SA          | 0                        | 0                        | 0                         | 0                            | 7,061,577        | 7,061,577        |           |
| <b>Total</b>   |             | <b>0</b>                 | <b>0</b>                 | <b>245,731</b>            | <b>0</b>                     | <b>7,061,577</b> | <b>7,307,308</b> |           |
| <i>Prior Years Cost</i>  |             | <i>Future Years Cost</i> |                          | <i>Total Project Cost</i> |                              |                  | 7,307,308        |           |
| <b>SR-5/US-1 FR SR-816/OAKLAND PARK BLVD TO SR-870/COMMERCIAL BLVD - FM# 4360971 (TIP# )</b>   |             |                          |                          |                           | Length: 1.540                | *Non-SIS*        |                  |           |
| Type of Work: RESURFACING  |             |                          |                          |                           | Lead Agency: MANAGED BY FDOT |                  |                  |           |
| Project Type: Imported   |             |                          |                          |                           |                              |                  |                  |           |
| PE   | DIH         | 10,000                   | 0                        | 0                         | 0                            | 0                | 10,000           |           |
| PE   | DDR         | 400,035                  | 0                        | 0                         | 0                            | 0                | 400,035          |           |
| CST  | DIH         | 0                        | 0                        | 21,580                    | 0                            | 0                | 21,580           |           |
| CST  | SA          | 0                        | 0                        | 2,666,901                 | 0                            | 0                | 2,666,901        |           |
| CST  | DDR         | 0                        | 0                        | 345,310                   | 0                            | 0                | 345,310          |           |
| <b>Total</b>   |             | <b>410,035</b>           | <b>0</b>                 | <b>3,033,791</b>          | <b>0</b>                     | <b>0</b>         | <b>3,443,826</b> |           |
| <i>Prior Years Cost</i>  |             | 5,000                    | <i>Future Years Cost</i> |                           | <i>Total Project Cost</i>    |                  |                  | 3,448,826 |

| Phase   | Fund Source | 2016             | 2017                     | 2018     | 2019                         | 2020      | Total            |
|---|-------------|------------------|--------------------------|----------|------------------------------|-----------|------------------|
| <b>SR-816/OAKLAND PARK BLVD FROM E OF 31ST AVE. TO EAST OF I-95 - FM# 4287321 (TIP# )</b>           |             |                  |                          |          | Length: 1.830 mi             | *Non-SIS* |                  |
| Type of Work: RESURFACING   |             |                  |                          |          | Lead Agency: FDOT            |           |                  |
| Project Type: Imported  |             |                  |                          |          |                              |           |                  |
| E OF 31 AVENUE TO E OF I-95 RESURFACING   |             |                  |                          |          |                              |           |                  |
| CST   | DS          | 395,183          | 0                        | 0        | 0                            | 0         | 395,183          |
| CST   | SA          | 941,849          | 0                        | 0        | 0                            | 0         | 941,849          |
| CST   | DDR         | 250,178          | 0                        | 0        | 0                            | 0         | 250,178          |
| CST   | NHRE        | 2,346,664        | 0                        | 0        | 0                            | 0         | 2,346,664        |
| CST   | HSP         | 55,956           | 0                        | 0        | 0                            | 0         | 55,956           |
| <b>Total</b>  |             | <b>3,989,830</b> | <b>0</b>                 | <b>0</b> | <b>0</b>                     | <b>0</b>  | <b>3,989,830</b> |
| <i>Prior Years Cost</i>   |             | 765,463          | <i>Future Years Cost</i> |          | <i>Total Project Cost</i>    |           | 4,755,293        |
| <b>SR-9/I-95 FROM S. OF SR-870/COMMERCIAL BLVD. TO N. OF CYPRESS CREEK RD - FM# 4358081 (TIP# )</b> |             |                  |                          |          | Length: .000                 | *SIS*     |                  |
| Type of Work: PD&E/EMO STUDY  |             |                  |                          |          | Lead Agency: MANAGED BY FDOT |           |                  |
| Project Type: Imported  |             |                  |                          |          |                              |           |                  |
| PDE   | DS          | 1,500,000        | 0                        | 0        | 0                            | 0         | 1,500,000        |
| PDE   | DIH         | 10,000           | 0                        | 0        | 0                            | 0         | 10,000           |
| <b>Total</b>  |             | <b>1,510,000</b> | <b>0</b>                 | <b>0</b> | <b>0</b>                     | <b>0</b>  | <b>1,510,000</b> |
| <i>Prior Years Cost</i>   |             | 505,000          | <i>Future Years Cost</i> |          | <i>Total Project Cost</i>    |           | 2,015,000        |

## Project Index by Name

| FM #    | TIP # | Project Name   | Page |
|---------|-------|--|------|
| 4368751 |       | ANDREWS AVENUE FROM OAKLAND PARK BLVD. TO PROSPECT ROAD                | 82   |
| 4331651 |       | BROWARD COUNTY MOBILITY PROJECTS                                       | 82   |
| 4316721 |       | NE 6TH AVENUE  | 82   |
| 4366851 |       | NW 21ST AVE FROM OAKLAND PARK BLVD. TO COMMERCIAL BLVD.                | 83   |
| 4359251 |       | PROSPECT RD. FROM COMMERCIAL BLVD. TO SR-811 DIXIE HWY                 | 83   |
| 4360971 |       | SR-5/US-1 FR SR-816/OAKLAND PARK BLVD TO SR-870/COMMERCIAL BLVD        | 83   |
| 4287321 |       | SR-816/OAKLAND PARK BLVD   | 84   |
| 4358081 |       | SR-9/I-95 FROM S. OF SR-870/COMMERCIAL BLVD. TO N. OF CYPRESS CREEK RD | 84   |