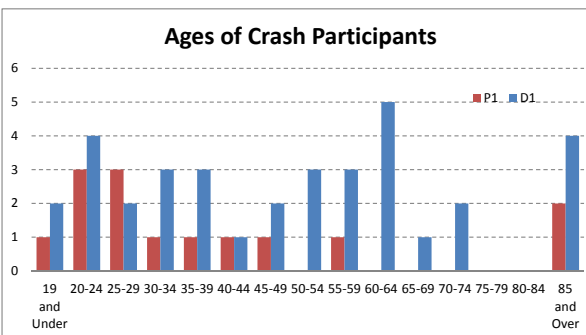
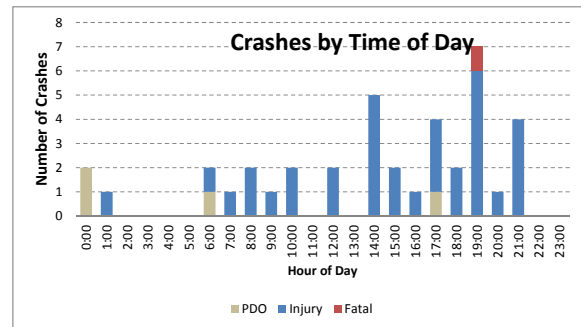
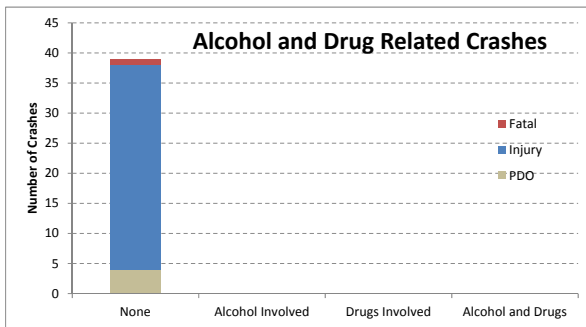
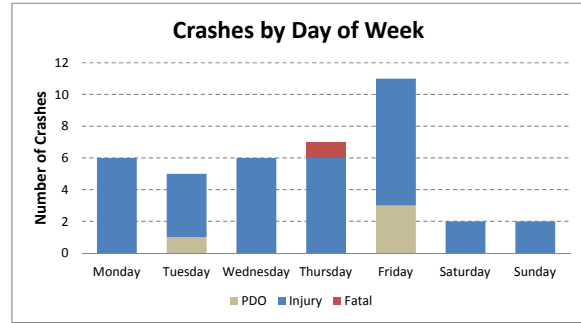
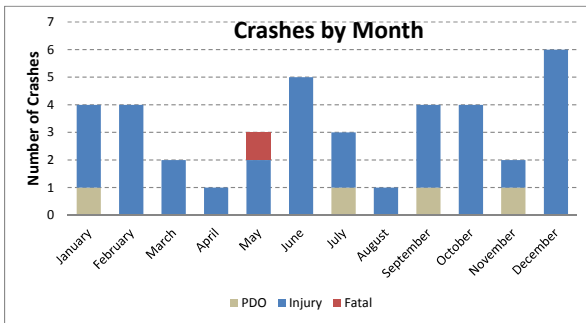
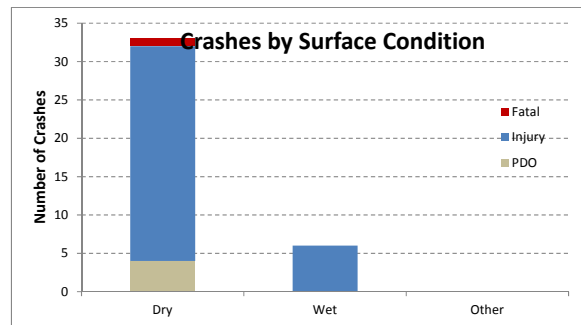
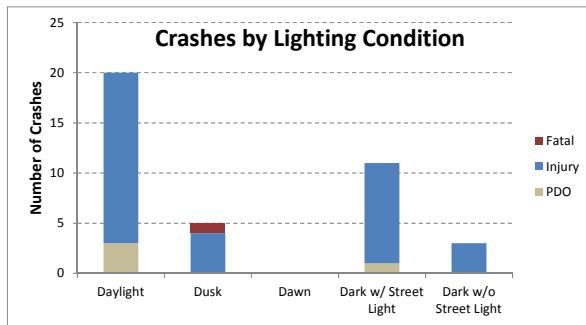
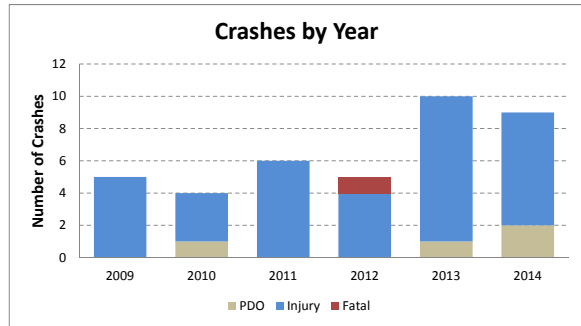
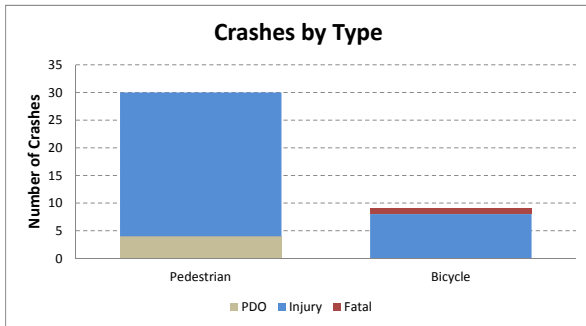


## CRASH ANALYSIS - Oakland Park Blvd. from NW 84th Ave. to Atrium West

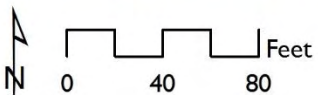
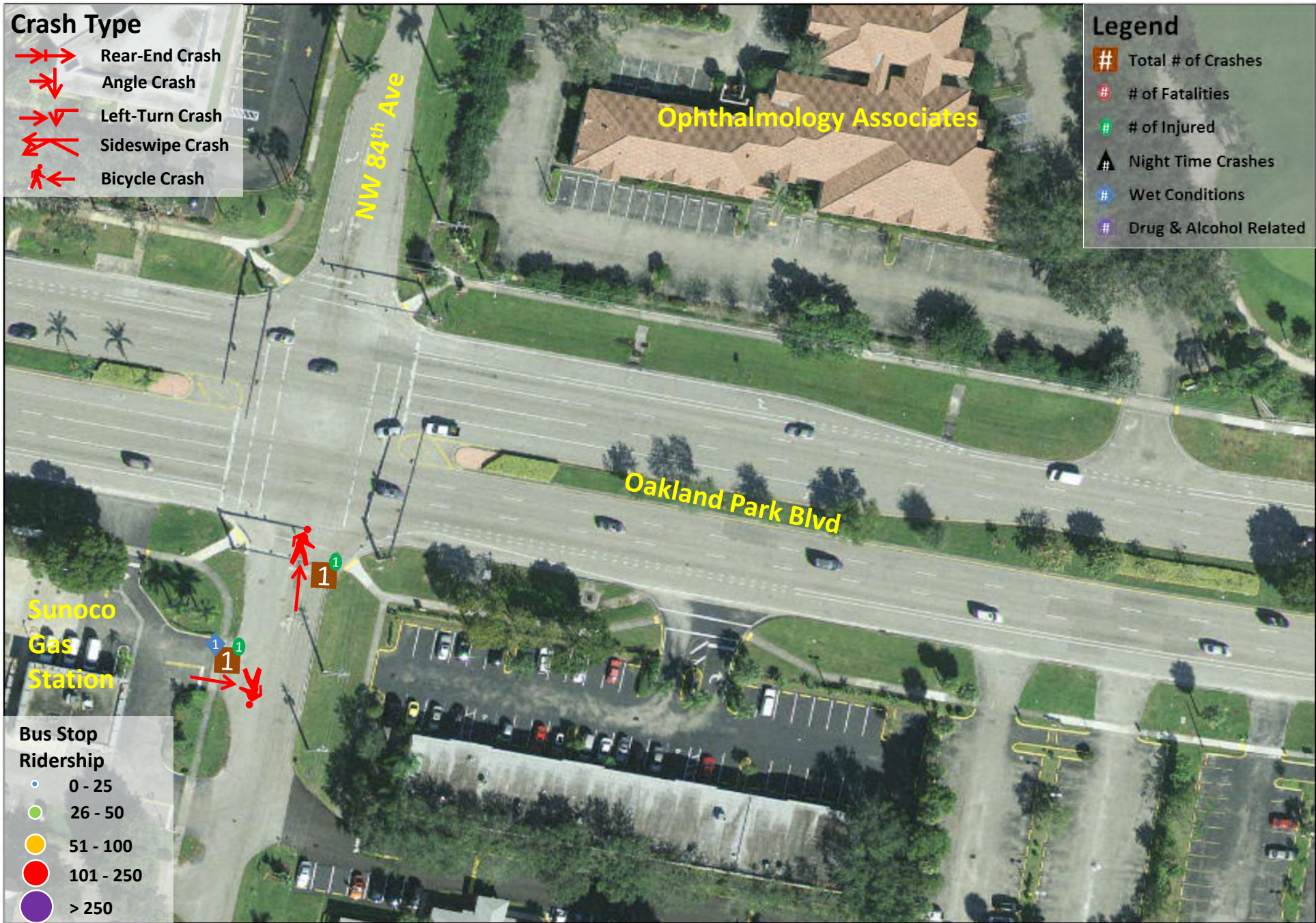
		Analysis Year						Severity			Total	Average	Percent
		2010	2011	2012	2013	2014	2015	PDO	Injury	Fatal			
Type of Crash	Pedestrian	3	3	6	2	8	8	4	26	0	30	5.00	76.9%
	Bicycle	2	1	0	3	2	1	0	8	1	9	1.50	23.1%
	<b>Total Crashes</b>	<b>5</b>	<b>4</b>	<b>6</b>	<b>5</b>	<b>10</b>	<b>9</b>	<b>4</b>	<b>34</b>	<b>1</b>	<b>39</b>	<b>6.50</b>	<b>100.0%</b>
Crash Severity	PDO	0	1	0	0	1	2				4	0.67	10.3%
	Injury	5	3	6	4	9	7				34	5.67	87.2%
	Fatal	0	0	0	1	0	0				1	0.17	2.6%
Light Conditions	Daylight	1	3	5	1	5	5	3	17	0	20	3.33	51.3%
	Dusk	1	0	0	2	2	0	0	4	1	5	0.83	12.8%
	Dawn	0	0	0	0	0	0	0	0	0	0	0.00	0.0%
	Dark w/ Street Light	3	1	1	1	2	3	1	10	0	11	1.83	28.2%
	Dark w/o Street Light	0	0	0	1	1	1	0	3	0	3	0.50	7.7%
	Unknown	0	0	0	0	0	0	0	0	0	0	0.00	0.0%
Surface Condition	Dry	5	3	5	4	8	8	4	28	1	33	5.50	84.6%
	Wet	0	1	1	1	2	1	0	6	0	6	1.00	15.4%
	Other	0	0	0	0	0	0	0	0	0	0	0.00	0.0%
Month	January	1	0	0	1	1	1	1	3	0	4	0.67	10.3%
	February	1	0	1	0	0	2	0	4	0	4	0.67	10.3%
	March	1	0	0	0	0	1	0	2	0	2	0.33	5.1%
	April	0	0	0	0	1	0	0	1	0	1	0.17	2.6%
	May	0	0	0	1	2	0	0	2	1	3	0.50	7.7%
	June	0	0	0	1	2	2	0	5	0	5	0.83	12.8%
	July	0	0	0	1	1	1	1	2	0	3	0.50	7.7%
	August	0	0	1	0	0	0	0	1	0	1	0.17	2.6%
	September	1	2	1	0	0	0	1	3	0	4	0.67	10.3%
	October	0	0	0	1	2	1	0	4	0	4	0.67	10.3%
	November	0	0	1	0	1	0	1	1	0	2	0.33	5.1%
	December	1	2	2	0	0	1	0	6	0	6	1.00	15.4%
Day of Week	Monday	1	1	4	0	0	0	0	6	0	6	1.00	15.4%
	Tuesday	1	0	1	0	2	1	1	4	0	5	0.83	12.8%
	Wednesday	0	2	0	2	0	2	0	6	0	6	1.00	15.4%
	Thursday	0	0	1	2	1	3	0	6	1	7	1.17	17.9%
	Friday	1	1	0	1	5	3	3	8	0	11	1.83	28.2%
	Saturday	1	0	0	0	1	0	0	2	0	2	0.33	5.1%
	Sunday	1	0	0	0	1	0	0	2	0	2	0.33	5.1%
Hour of Day	0:00	0	0	0	0	1	1	2	0	0	2	0.33	5.1%
	1:00	1	0	0	0	0	0	0	1	0	1	0.17	2.6%
	2:00	0	0	0	0	0	0	0	0	0	0	0.00	0.0%
	3:00	0	0	0	0	0	0	0	0	0	0	0.00	0.0%
	4:00	0	0	0	0	0	0	0	0	0	0	0.00	0.0%
	5:00	0	0	0	0	0	0	0	0	0	0	0.00	0.0%
	6:00	0	0	1	0	0	1	1	1	0	2	0.33	5.1%
	7:00	0	1	0	0	0	0	0	1	0	1	0.17	2.6%
	8:00	1	0	1	0	0	0	0	2	0	2	0.33	5.1%
	9:00	0	0	0	0	1	0	0	1	0	1	0.17	2.6%
	10:00	0	0	0	1	1	0	0	2	0	2	0.33	5.1%
	11:00	0	0	0	0	0	0	0	0	0	0	0.00	0.0%
	12:00	0	0	0	0	2	0	0	2	0	2	0.33	5.1%
	13:00	0	0	0	0	0	0	0	0	0	0	0.00	0.0%
	14:00	0	1	2	0	0	2	0	5	0	5	0.83	12.8%
	15:00	0	0	0	1	1	0	0	2	0	2	0.33	5.1%
	16:00	0	0	0	0	0	1	0	1	0	1	0.17	2.6%
	17:00	0	1	1	1	0	1	1	3	0	4	0.67	10.3%
	18:00	1	0	0	0	1	0	0	2	0	2	0.33	5.1%
	19:00	1	1	0	2	2	1	0	6	1	7	1.17	17.9%
	20:00	0	0	1	0	0	0	0	1	0	1	0.17	2.6%
	21:00	1	0	0	0	1	2	0	4	0	4	0.67	10.3%
	22:00	0	0	0	0	0	0	0	0	0	0	0.00	0.0%
23:00	0	0	0	0	0	0	0	0	0	0	0.00	0.0%	
Alcohol	None	5	4	6	5	10	9	4	34	1	39	6.50	100.0%
	Alcohol Involved	0	0	0	0	0	0	0	0	0	0	0.00	0.0%
	Drugs Involved	0	0	0	0	0	0	0	0	0	0	0.00	0.0%
	Alcohol and Drugs	0	0	0	0	0	0	0	0	0	0	0.00	0.0%
	Undetermined	0	0	0	0	0	0	0	0	0	0	0.00	0.0%

Age of Ped/Bicyclist	19 and Under	0	1	0	0	0	0				1	0.17	2.6%
	20-24	2	1	0	0	0	0				3	0.50	7.7%
	25-29	0	2	1	0	0	0				3	0.50	7.7%
	30-34	0	0	1	0	0	0				1	0.17	2.6%
	35-39	0	0	1	0	0	0				1	0.17	2.6%
	40-44	1	0	0	0	0	0				1	0.17	2.6%
	45-49	1	0	0	0	0	0				1	0.17	2.6%
	50-54	0	0	0	0	0	0				0	0.00	0.0%
	55-59	1	0	0	0	0	0				1	0.17	2.6%
	60-64	0	0	0	0	0	0				0	0.00	0.0%
	65-69	0	0	0	0	0	0				0	0.00	0.0%
	70-74	0	0	0	0	0	0				0	0.00	0.0%
	75-79	0	0	0	0	0	0				0	0.00	0.0%
	80-84	0	0	0	0	0	0				0	0.00	0.0%
85 and Over	0	0	0	0	1	1				2	0.33	5.1%	
Age of Driver	19 and Under	0	0	2	0	0	0				2	0.33	5.1%
	20-24	1	2	0	1	0	0				4	0.67	10.3%
	25-29	1	0	0	0	1	0				2	0.33	5.1%
	30-34	0	0	0	0	2	1				3	0.50	7.7%
	35-39	0	0	0	0	2	1				3	0.50	7.7%
	40-44	0	0	0	1	0	0				1	0.17	2.6%
	45-49	0	0	0	0	1	1				2	0.33	5.1%
	50-54	0	0	1	1	1	0				3	0.50	7.7%
	55-59	0	1	0	1	0	1				3	0.50	7.7%
	60-64	1	0	1	1	0	2				5	0.83	12.8%
	65-69	1	0	0	0	0	0				1	0.17	2.6%
	70-74	0	0	1	0	1	0				2	0.33	5.1%
	75-79	0	0	0	0	0	0				0	0.00	0.0%
	80-84	0	0	0	0	0	0				0	0.00	0.0%
85 and Over	0	0	0	0	1	3				4	0.67	10.3%	

## CRASH ANALYSIS - Oakland Park Blvd. from NW 84th Ave. to Atrium West

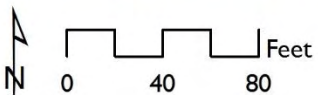
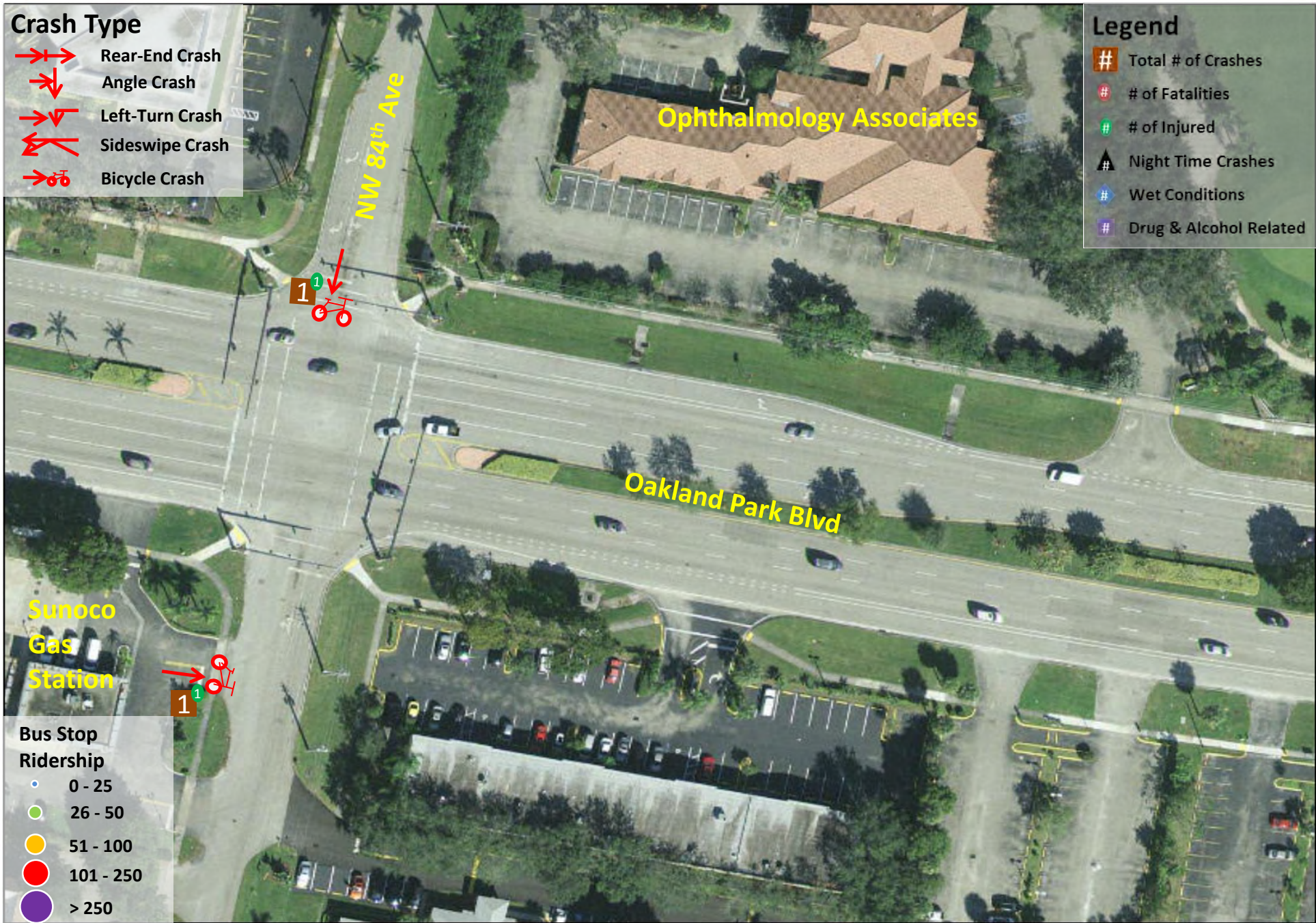






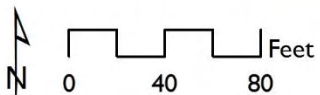
**Broward MPO Pedestrian and Bicycle Safety Action Plan**  
**Pedestrian Crashes - Oakland Park Boulevard from NW 84<sup>th</sup> Avenue to Atrium West**





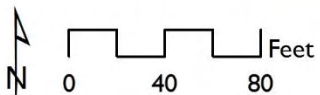
Broward MPO Pedestrian and Bicycle Safety Action Plan  
 Bicycle Crashes - Oakland Park Boulevard from NW 84<sup>th</sup> Avenue to Atrium West





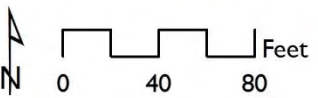
Broward MPO Pedestrian and Bicycle Safety Action Plan  
 Pedestrian Crashes - Oakland Park Boulevard from NW 84<sup>th</sup> Avenue to Atrium West





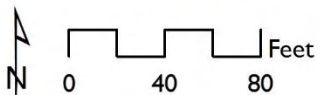
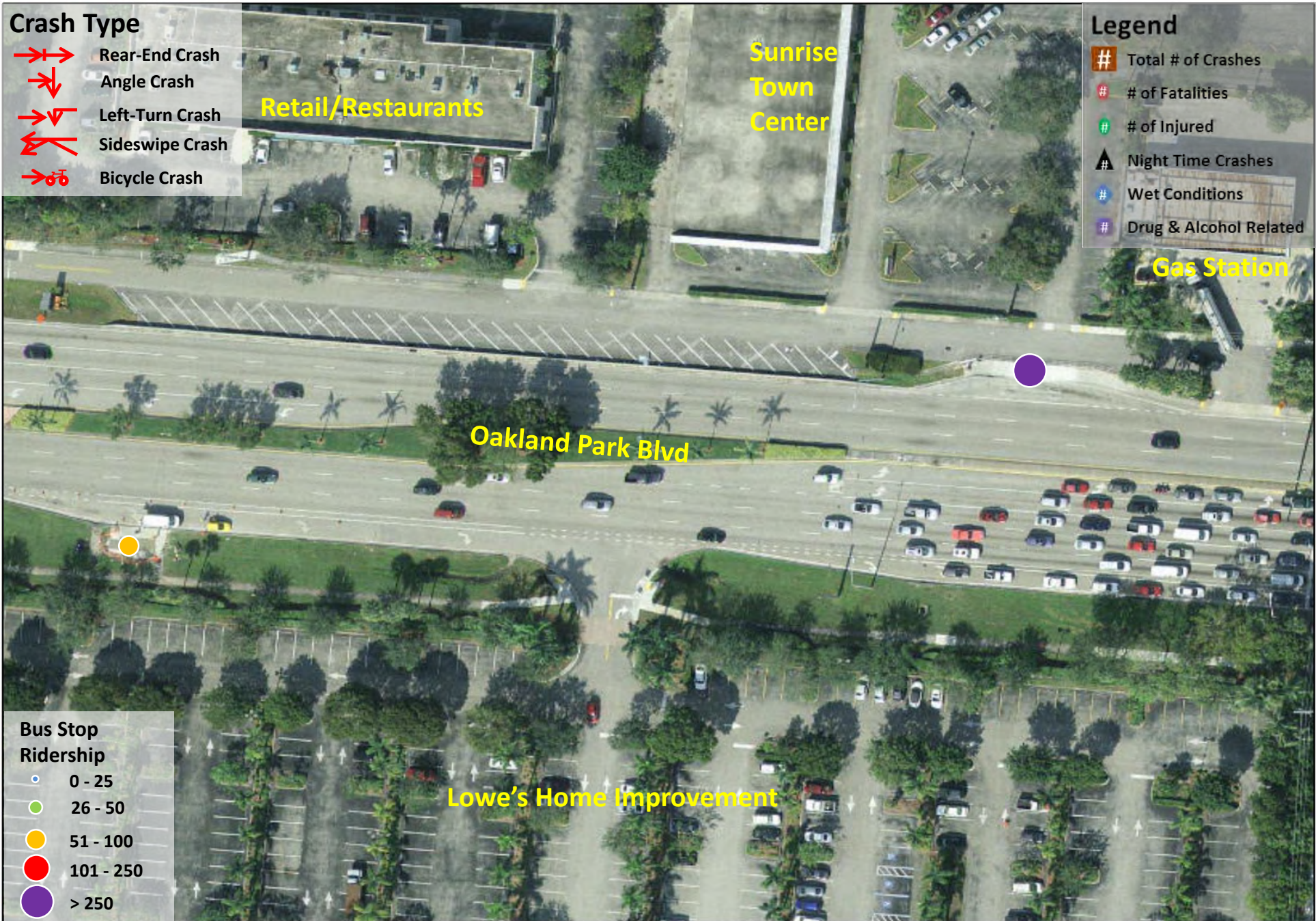
Broward MPO Pedestrian and Bicycle Safety Action Plan  
 Bicycle Crashes - Oakland Park Boulevard from NW 84<sup>th</sup> Avenue to Atrium West





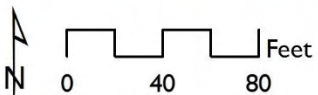
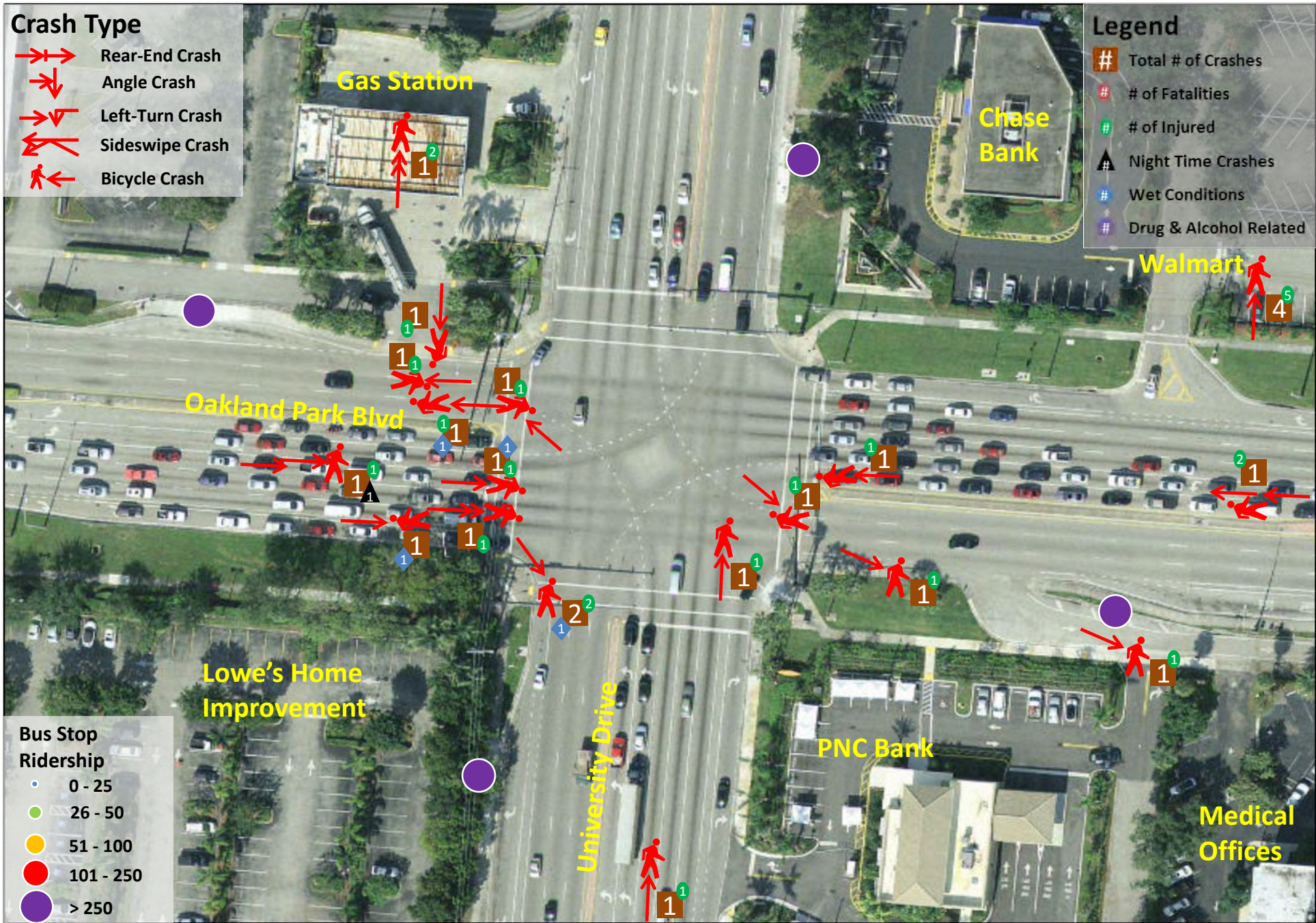
Broward MPO Pedestrian and Bicycle Safety Action Plan | Figure 5  
 Pedestrian Crashes - Oakland Park Boulevard from NW 84<sup>th</sup> Avenue to Atrium West





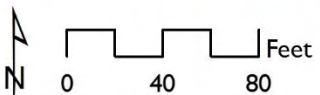
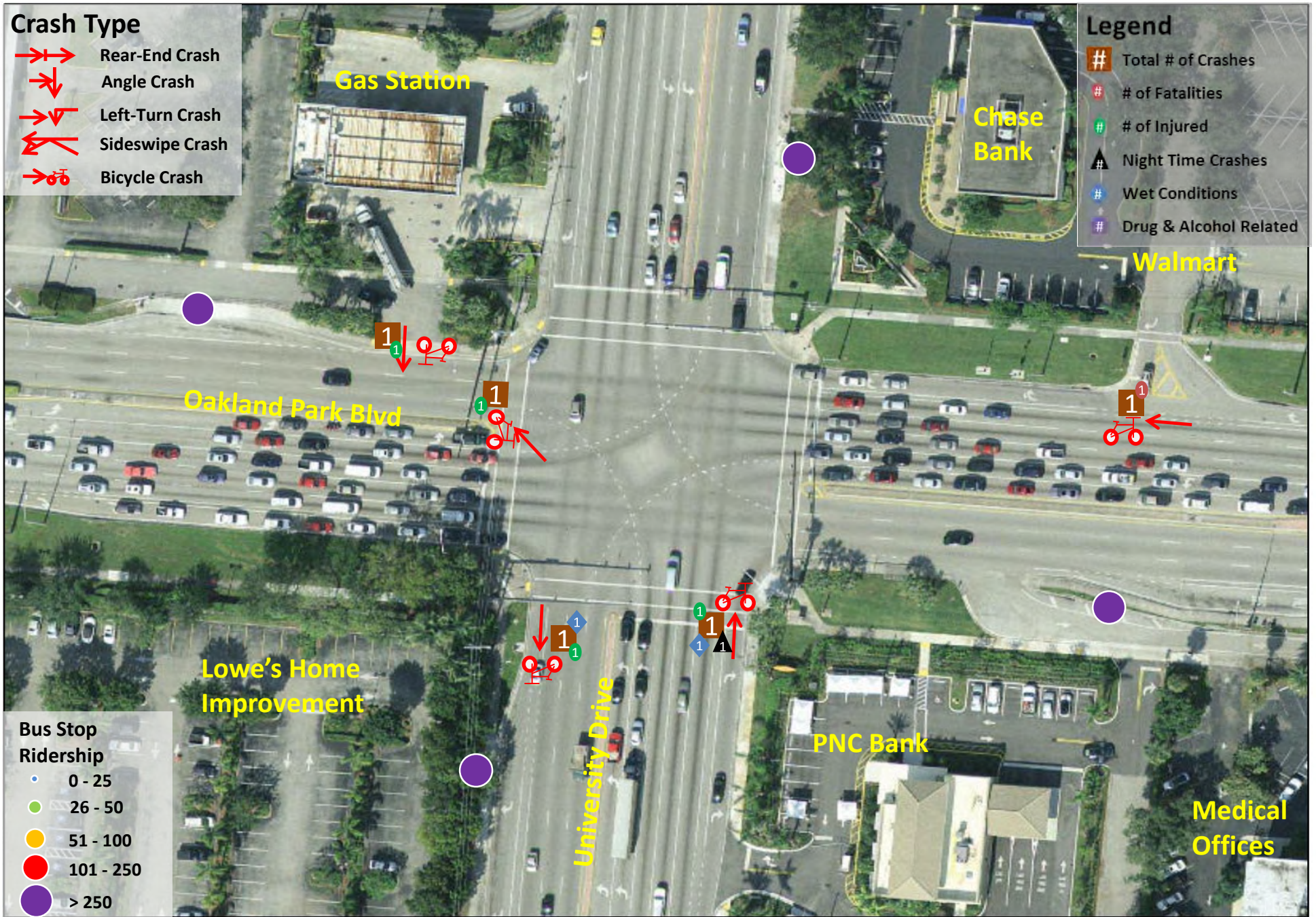
Broward MPO Pedestrian and Bicycle Safety Action Plan  
 Bicycle Crashes - Oakland Park Boulevard from NW 84<sup>th</sup> Avenue to Atrium West





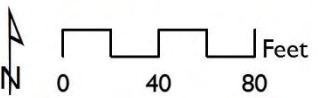
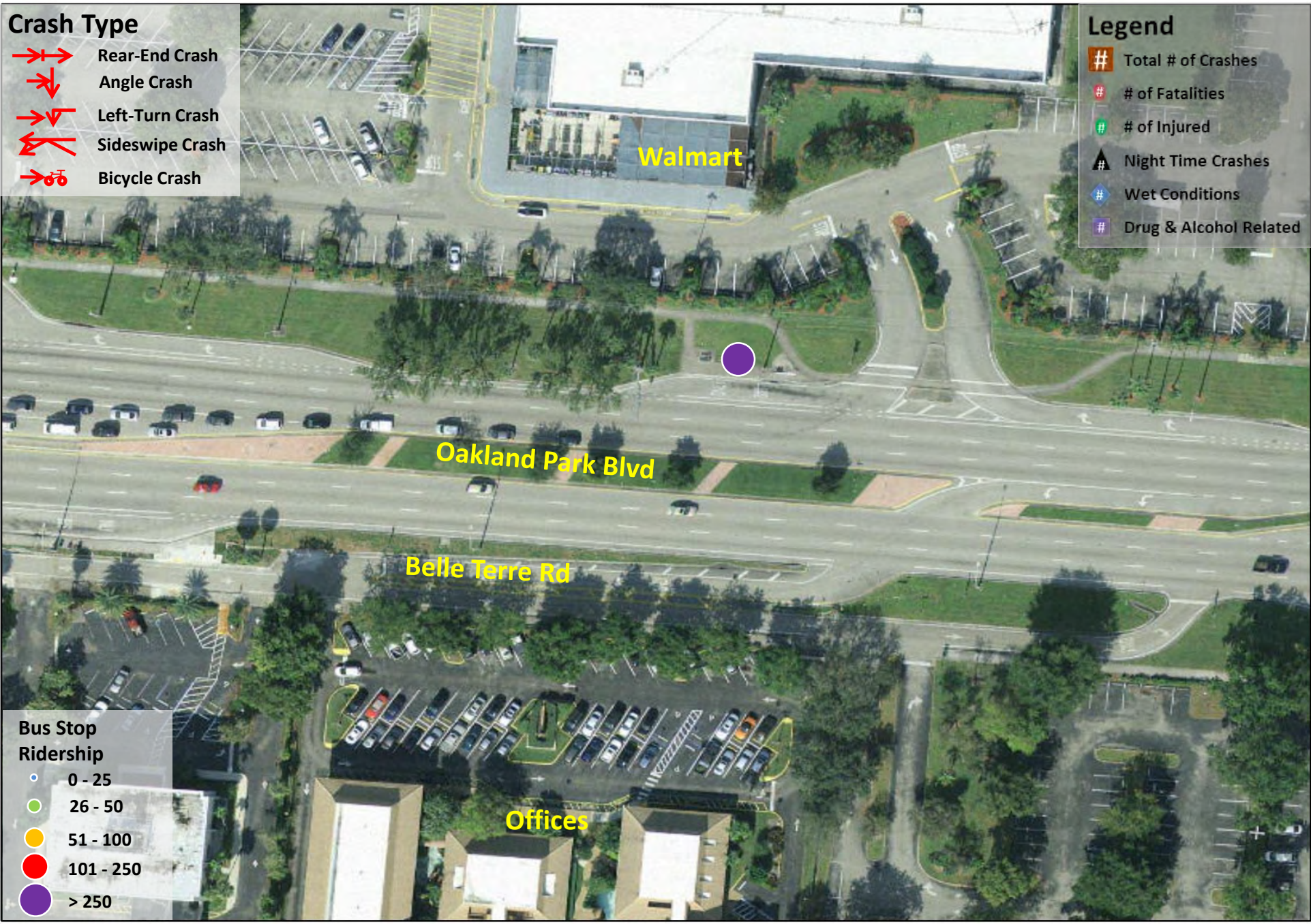
Broward MPO Pedestrian and Bicycle Safety Action Plan  
 Pedestrian Crashes - Oakland Park Boulevard from NW 84<sup>th</sup> Avenue to Atrium West





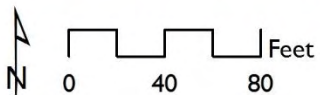
Broward MPO Pedestrian and Bicycle Safety Action Plan  
 Bicycle Crashes - Oakland Park Boulevard from NW 84<sup>th</sup> Avenue to Atrium West





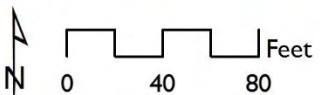
Broward MPO Pedestrian and Bicycle Safety Action Plan | Figure 9  
 Pedestrian Crashes - Oakland Park Boulevard from NW 84<sup>th</sup> Avenue to Atrium West





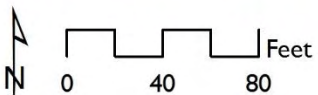
Broward MPO Pedestrian and Bicycle Safety Action Plan  
 Bicycle Crashes - Oakland Park Boulevard from NW 84<sup>th</sup> Avenue to Atrium West





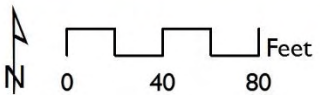
Broward MPO Pedestrian and Bicycle Safety Action Plan  
 Pedestrian Crashes - Oakland Park Boulevard from NW 84<sup>th</sup> Avenue to Atrium West





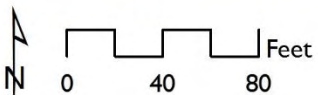
Broward MPO Pedestrian and Bicycle Safety Action Plan  
 Bicycle Crashes - Oakland Park Boulevard from NW 84<sup>th</sup> Avenue to Atrium West





Broward MPO Pedestrian and Bicycle Safety Action Plan  
 Pedestrian Crashes - Oakland Park Boulevard from NW 84<sup>th</sup> Avenue to Atrium West





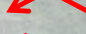




Broward MPO Pedestrian and Bicycle Safety Action Plan  
 Bicycle Crashes - Oakland Park Boulevard from NW 84<sup>th</sup> Avenue to Atrium West



**Crash Type**






-  Rear-End Crash
-  Angle Crash
-  Left-Turn Crash
-  Sideswipe Crash
-  Bicycle Crash

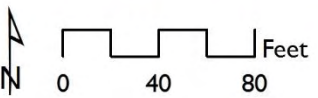
**Legend**

-  Total # of Crashes
-  # of Fatalities
-  # of Injured
-  Night Time Crashes
-  Wet Conditions
-  Drug & Alcohol Related



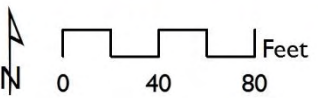
**Bus Stop Ridership**

-  0 - 25
-  26 - 50
-  51 - 100
-  101 - 250
-  > 250



Broward MPO Pedestrian and Bicycle Safety Action Plan | Figure 15  
 Pedestrian Crashes - Oakland Park Boulevard from NW 84<sup>th</sup> Avenue to Atrium West





Broward MPO Pedestrian and Bicycle Safety Action Plan | Figure 16  
 Bicycle Crashes - Oakland Park Boulevard from NW 84<sup>th</sup> Avenue to Atrium West